



DE VALK
YACHT BROKERS

JEANNEAU SUN ODYSSEY 40



DE VALK
YACHT BROKERS

JEANNEAU SUN ODYSSEY 40

BROKER'S COMMENTS

Double 07 is a beautiful example of the Jeanneau Sun Odyssey 40. This is the version with two spacious cabins and two bathrooms. Many recent innovations ensure that this boat is up-to-date and ready for new destinations. To be viewed by appointment at its own berth in the South-West Netherlands. Contact the Valk Zeeland for details.

Nick Lanting

SPECIFICATIONS

Dimensions	12.20 x 3.95 x 1,50 / 1.50 (m)	Builder	Jeanneau
Built	2002	Cabins	2
Material	GRP	Berths	5
Engine(s)	1 x Volvo Penta D2-55 diesel	Hp/Kw	55.00 (hp), 40.48 (kw)
Asking price	€ 125.000 (VAT Paid)	Lying	elsewhere / Not at sales office

CONTACT

Sales office	De Valk Sint Annaland	Telephone	+31 166 601 000
Address	Koelhuisweg 4 4697 RM Sint Annaland The Netherlands	E-mail	sintannaland@devalk.nl

DISCLAIMER

These particulars are given in good faith as supplied but cannot be guaranteed.



JEANNEAU SUN ODYSSEY 40

GENERAL

Model	JEANNEAU SUN ODYSSEY 40
Type	sailing yacht
LOA (m)	12,20
LWL (m)	10,17
Beam (m)	3,95
Draft (m)	1,50
Draft min (m)	1,50
Headroom (m)	1,93
Year built	2002
Builder	Jeanneau
Country	France
Designer	D. Andrieu & Jeanneau Design
Displacement (t)	7,3
Ballast (tonnes)	lead 2.65
CE norm	A
Hull material	GRP
Hull colour	white
Hull shape	round-bilged
Keel type	fin keel
Superstructure material	GRP
Deck material	GRP
Deck finish	non-skid moulded in
Superstructure deck finish	non-skid moulded in
Cockpit deck finish	teak
Antifouling (year)	2025
Deckhatch	2 x
Portholes	aluminium
Fuel tank (litre)	polyethylene 136
Level indicator (fuel tank)	yes
Freshwater tank (litre)	polyethylene 320, in two tanks



JEANNEAU SUN ODYSSEY 40

Level indicator (freshwater)	yes
Wheel steering	yes
Outside helm position	Twin steering wheels
Emergency tiller	yes
More info on hull	Original gelcoat
Extra info	Uw-body stripped to gelcoat 2023 out of precaution
Extra info	Kevlar Energized = Hull Kevlar reinforced at certain parts

ACCOMMODATION

Cabins	2
Berths	5
Interior	teak
Floor	teak and holly
Open cockpit	yes
Saloon	yes
Headroom saloon (m)	1.93
Heating	diesel ducted hot air Webasto
Navigation center	yes
Chart table	yes
Dinette	yes
Galley	yes
Countertop	plastic
Sink	stainless steel
Cooker	calor gas 4-burner
Oven	yes
Fridge	Toploading
Hot water system	220V + engine
Water pressure system	electrical
Crockery	yes
Owners cabin	v-bed Forward
Bed length (m)	2,10 x 0,70/1,80



JEANNEAU SUN ODYSSEY 40

Wardrobe	hanging and shelves
Bathroom	en suite
Toilet	In bathroom
Toilet system	manual
Wash basin	in the bathroom
Shower	In bathroom
Guest cabin 1	double bed Port aft
Bed length (m)	2,05/1,90 x 2,20
Wardrobe	hanging and shelves
Bathroom	separate
Toilet	In bathroom
Toilet system	manual
Wash basin	in the bathroom
Shower	In bathroom

MACHINERY

No of engines	1
Make	Volvo Penta
Type	D2-55
HP	55
kW	40.48
Fuel	diesel
Year installed	2002
Maximum speed (kn)	8
Cruising speed (kn)	6
Consumption (l/hr)	2
Engine cooling system	freshwater heat exchanger
Drive	shaft
Shaft seal	yes
Engine controls	bowden cable
Gearbox	mechanical



JEANNEAU SUN ODYSSEY 40

Bowthruster	electric Vetus proportional
Exhaust	watercooled
Propeller type	fixed
Propeller blades	4
Propeller shaft material	stainless steel
Shaft lubrication	water
Manual bilge pump	yes
Electric bilge pump	yes
Electrical installation	12 V, 230 V
Batteries	yes
Start battery	1 x (2023)
Service battery	2 x (2023)
Bowthruster battery	yes
Battery monitor	yes
Battery charger	yes
Solar panel	110 W
Diode battery combiners	yes
Shorepower	with cable

NAVIGATION

Compass	2 x Plastimo
Electric compass	In autopilot
Depth sounder/log	Raymarine TriData
Windset	Raymarine ST60 Wind
Repeater	Raymarine ST60 Multi
VHF	Standard Horizon
VHF handheld	yes
Autopilot	Raymarine ST6001+
Rudder angle indicator	In autopilot
Plotter/GPS	Raymarine 2023
Electronic chart(s)	yes



AIS transceiver	yes
Navigation lights	yes

EQUIPMENT

Sprayhood with grab rail	yes
Sun awning	2024
Cockpit cushions	Universal
Cockpit table	Foldable
Bathing platform	yes
Boarding ladder	stainless steel
Transom door	yes
Deck shower	yes
Anchor	CQR Plough
Anchor chain	Galvanized 40 m
Windlass	electrical Lofrans
Capstan	On windlass
Sea railing	wire
Grab rail (superstructure)	wood
Railing side opening gates	2 x
Pushpit	yes
Pulpit	yes
Lifejackets	2 x
Lifebuoy	yes
Radar reflector	yes
Fenders	yes
Mooring lines	yes
Spare parts	yes
TV	Nokia 82 cm in saloon
Radio	Hertz, with Bluetooth
Cockpit speakers	2 x
Speakers in salon	yes



Clock - barometer	yes
Fire extinguisher	yes
Latest extinguisher survey	Unknown

RIGGING

Rigging	fractional 7/8
Standing rigging	wire 2024
Brand mast	Seldén 2022
Material mast	aluminium
Spreaders	2 x 2
Mainsail	2024
Stoway mast	yes
Genoa	2023
Genoa furler	yes
Boomvang	mechanical
Genoa sheetwinches	2 x Harken
Halyard winches	2 x Harken
Winchcovers	yes



JEANNEAU SUN ODYSSEY 40



JEANNEAU SUN ODYSSEY 40



JEANNEAU SUN ODYSSEY 40



JEANNEAU SUN ODYSSEY 40



JEANNEAU SUN ODYSSEY 40



JEANNEAU SUN ODYSSEY 40



JEANNEAU SUN ODYSSEY 40



JEANNEAU SUN ODYSSEY 40



JEANNEAU SUN ODYSSEY 40



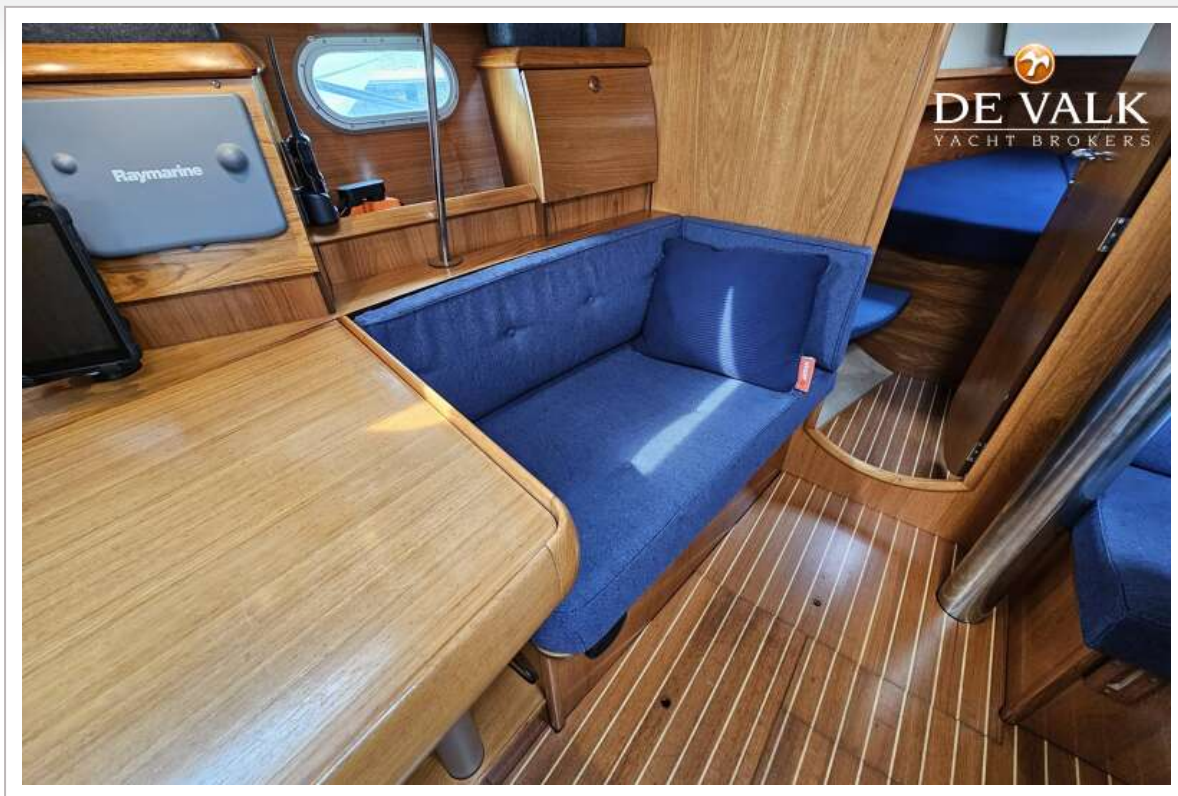
JEANNEAU SUN ODYSSEY 40



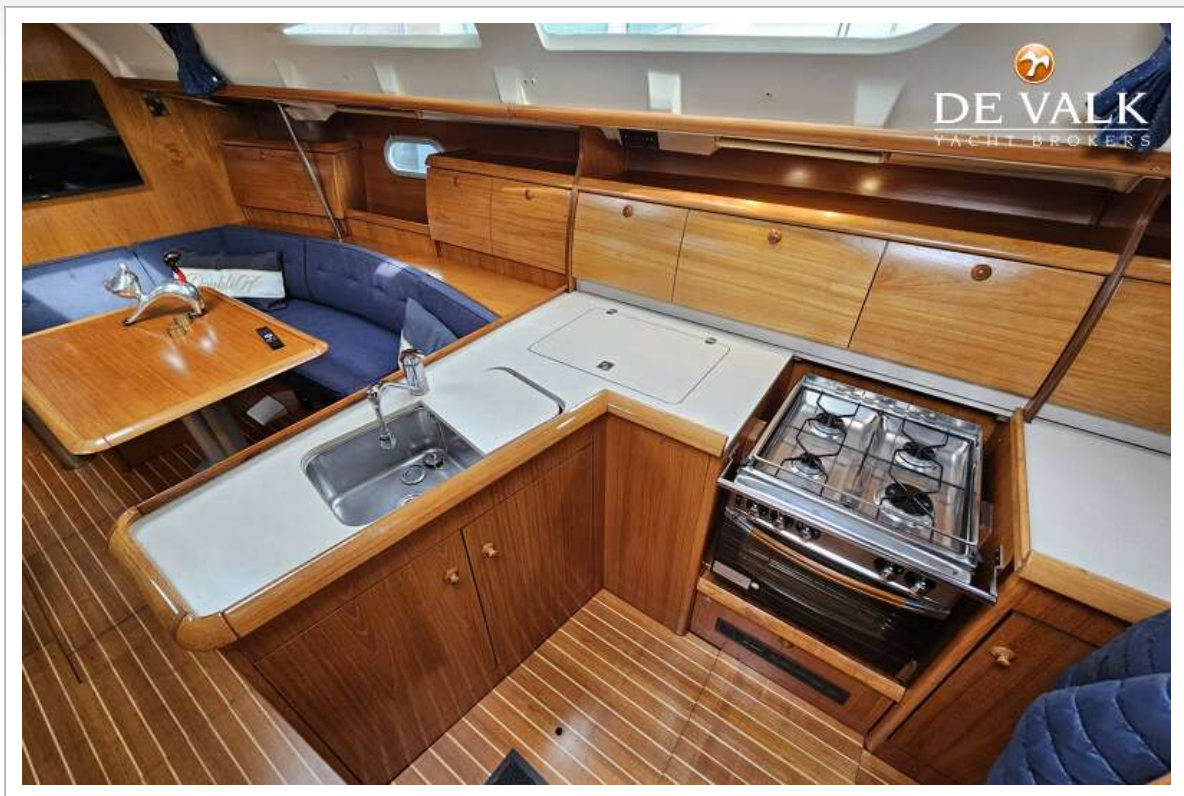
JEANNEAU SUN ODYSSEY 40



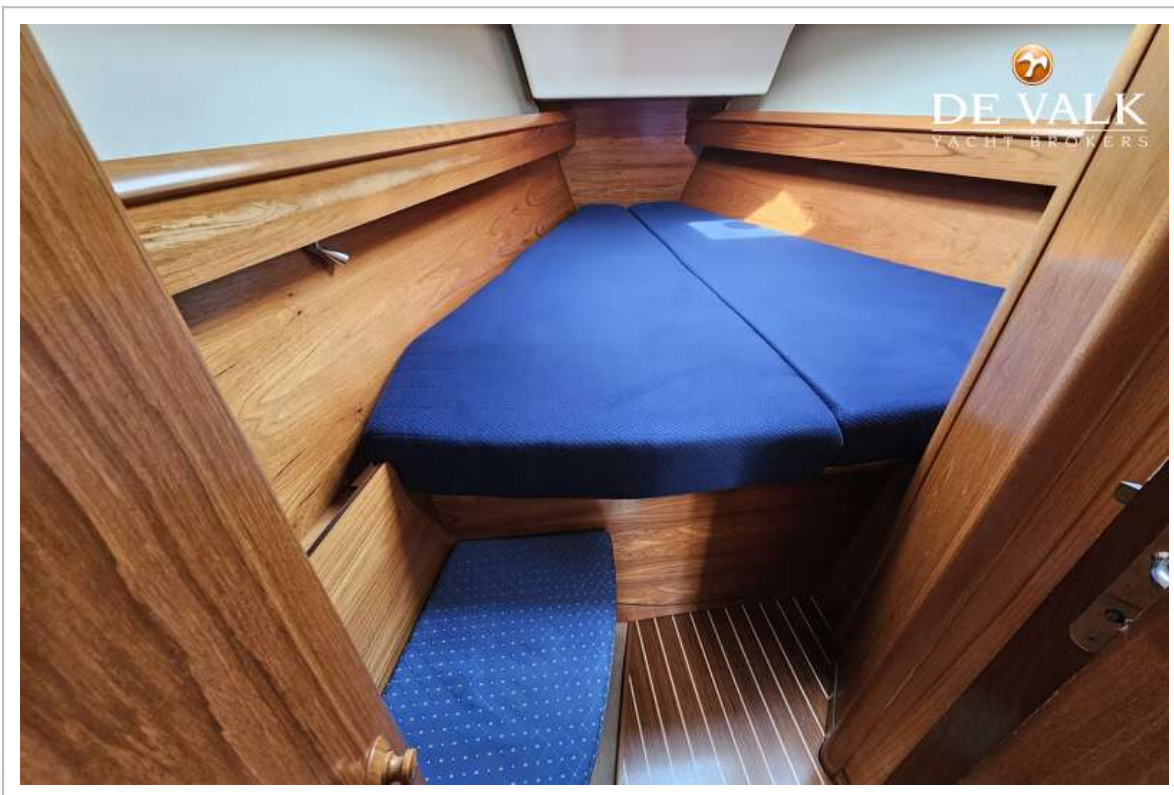
JEANNEAU SUN ODYSSEY 40



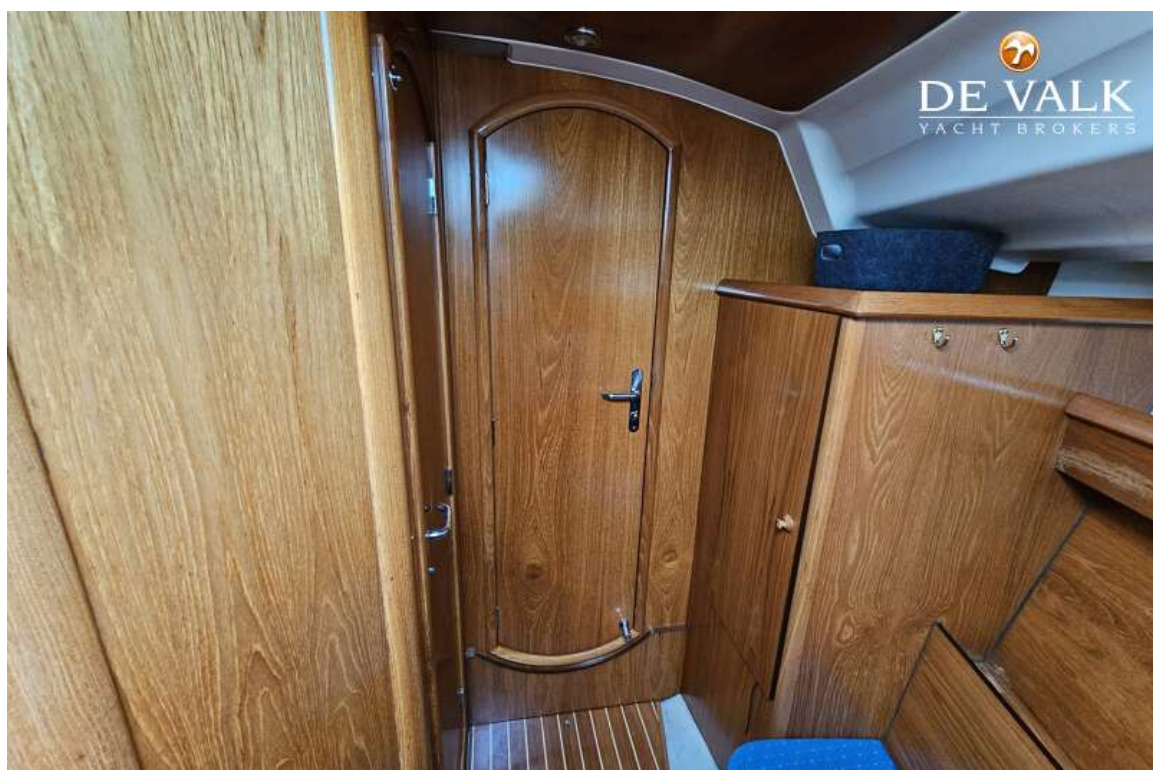
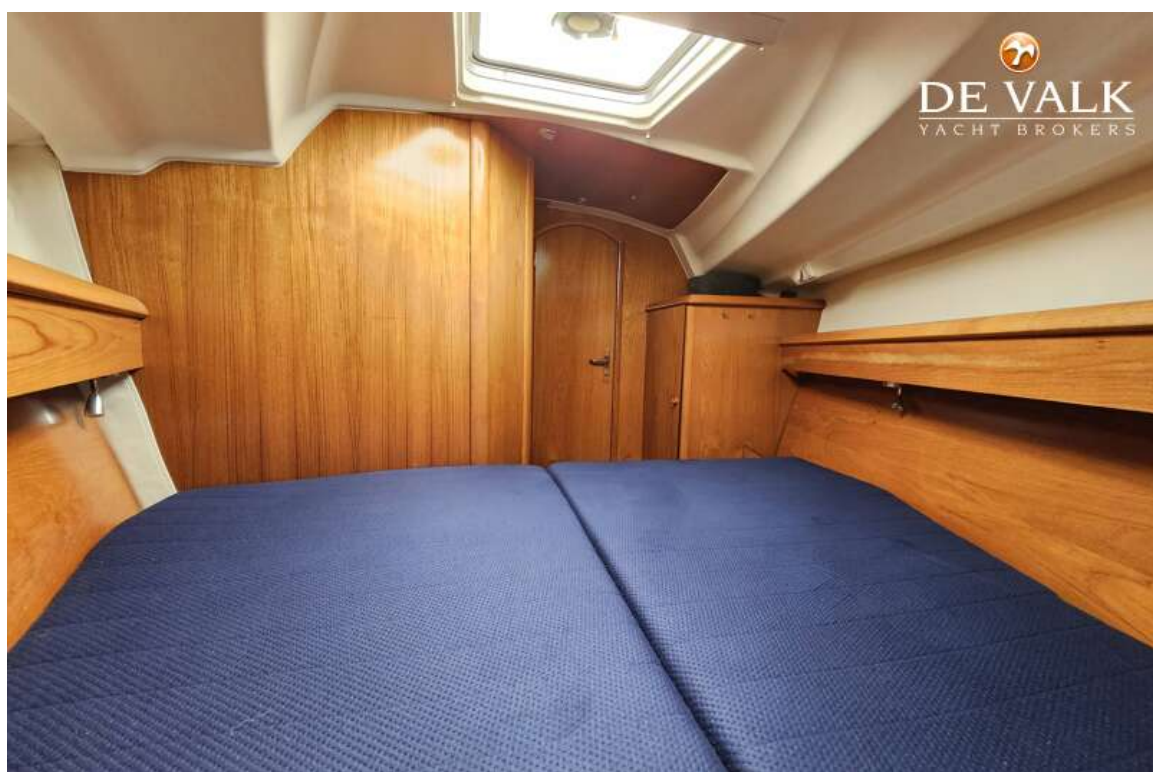
JEANNEAU SUN ODYSSEY 40

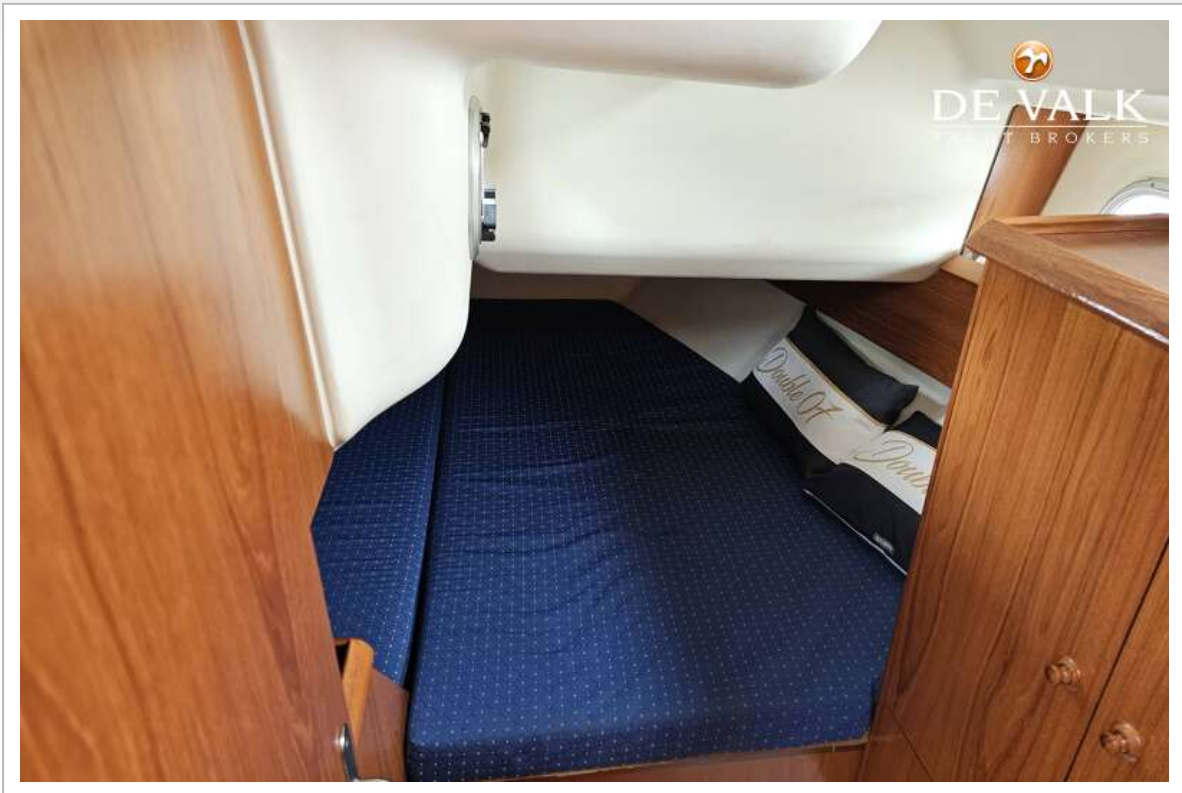


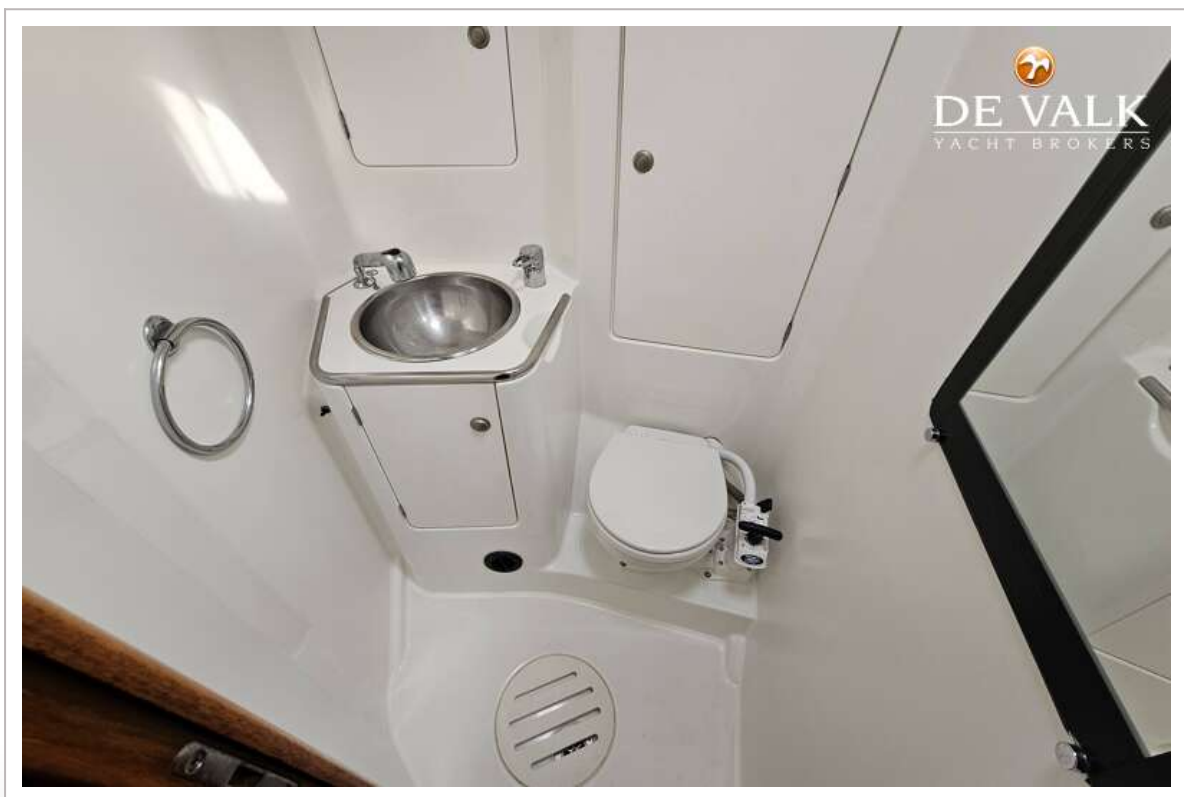
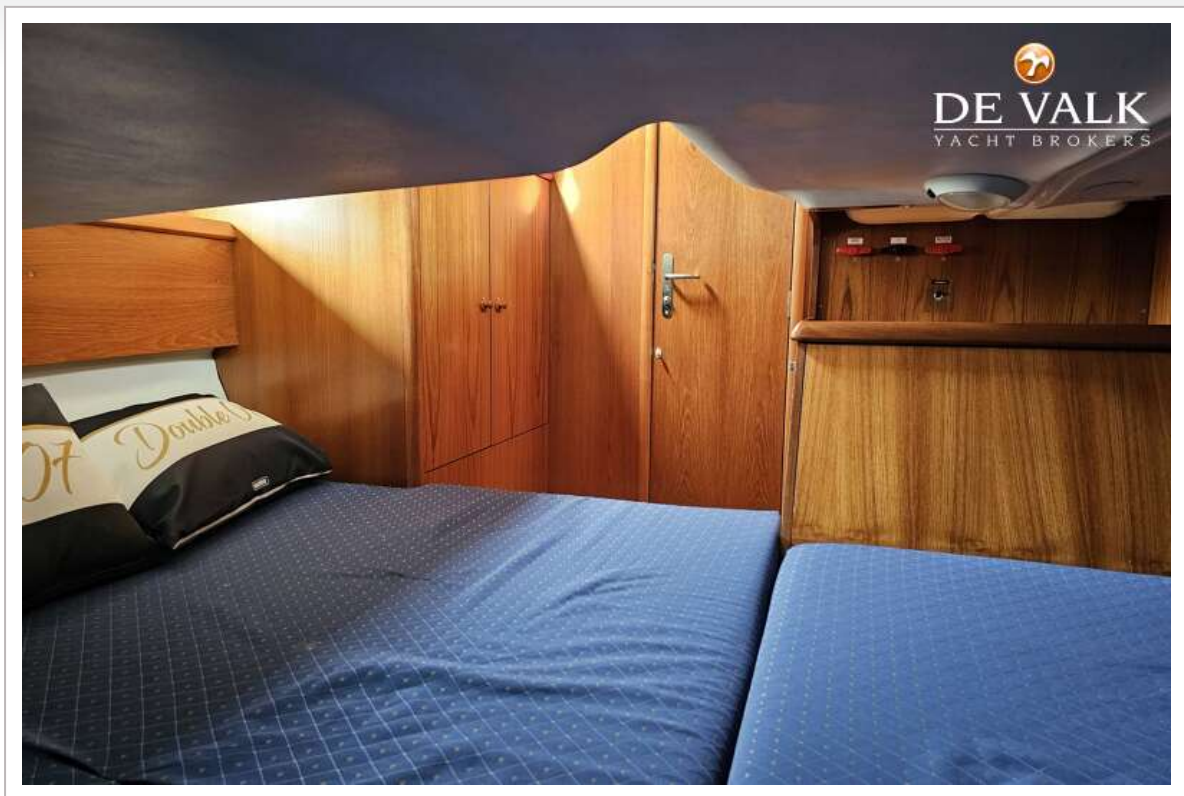
JEANNEAU SUN ODYSSEY 40



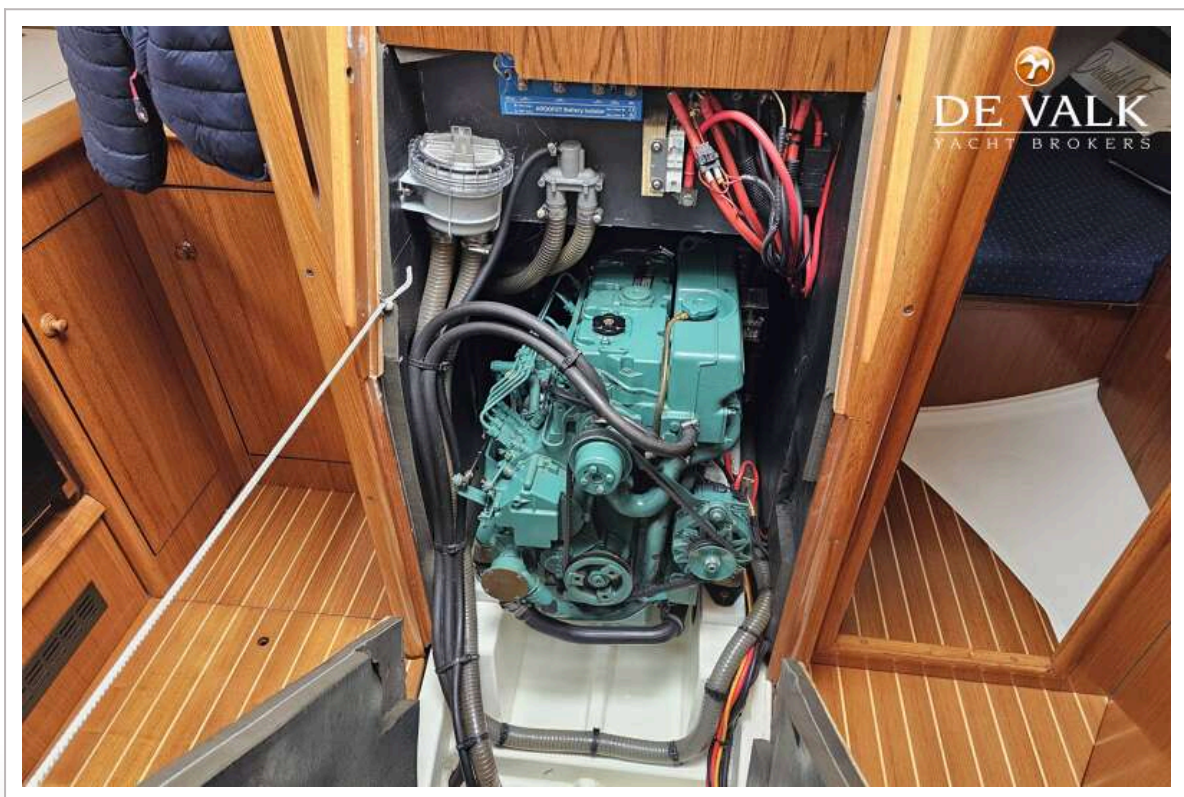
JEANNEAU SUN ODYSSEY 40

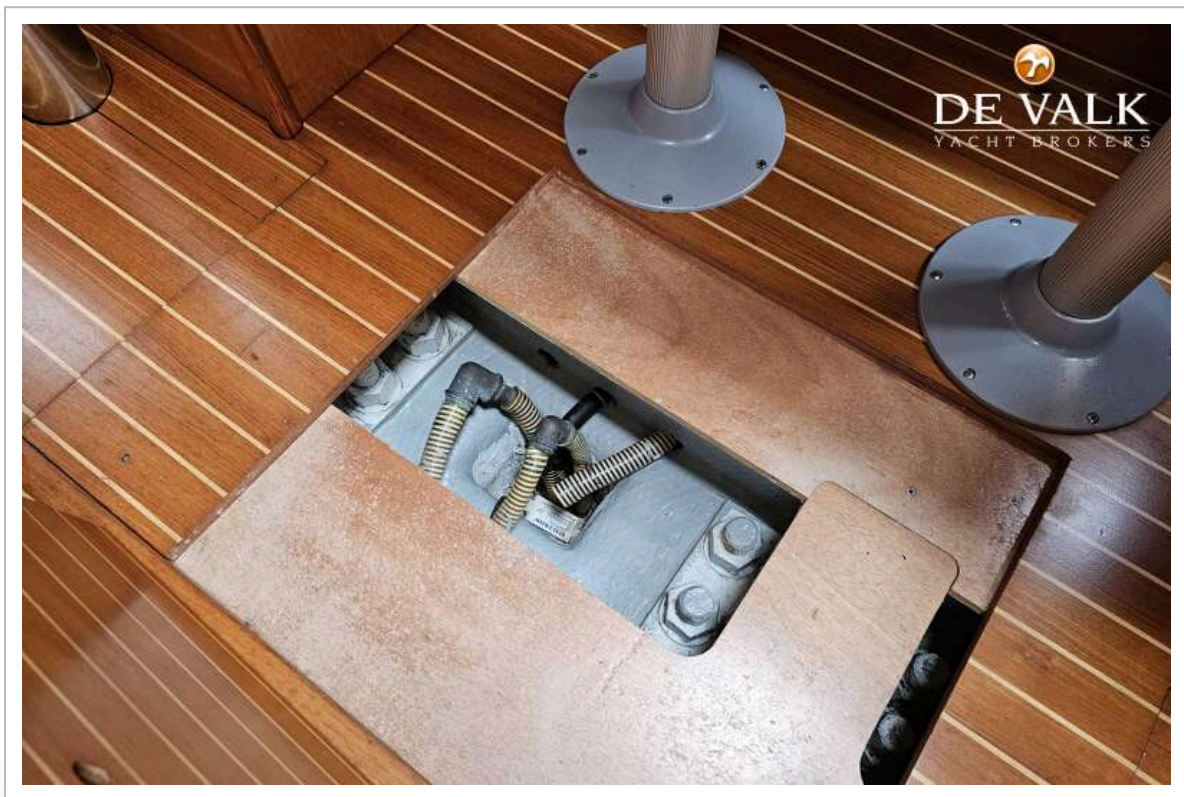


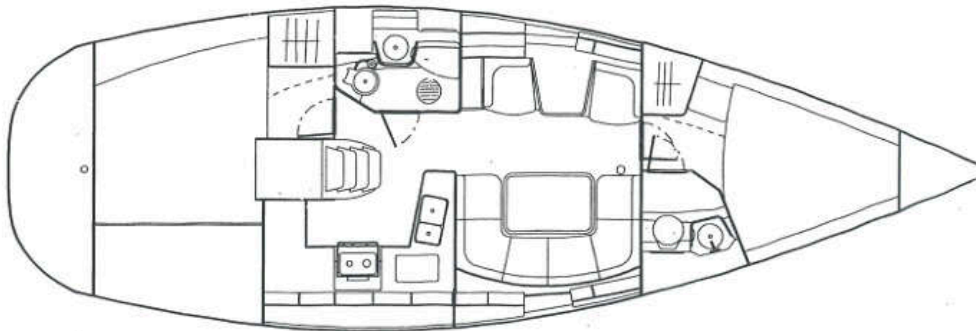




JEANNEAU SUN ODYSSEY 40







Version 2 cabins / 2 Cabins version / 2 Kabinen Version

FREQUENTLY ASKED QUESTIONS

What is the reason for selling your yacht?

I am buying a bigger boat

How many owners has your yacht had and when?

Since 2002 three owners. I don't know when exactly. I bought it in 2022.

What can you tell about the history and cruising area of your yacht?

It is a Dutch supplied boat that has sailed the waters in the Netherlands, Belgium, France, UK and Northern Germany.

Why did you choose for this yacht when you bought it?

I unexpectedly sold my previous boat and wanted to have another boat immediately and the next day I bought the Jeanneau.

What is the special meaning of the name of the yacht for you?

I have been involved professionally in James Bond productions so the name 007 has a special meaning to me.

Has your yacht ever been used for charter? And if so, when?

No.

What can you tell about the sailing characteristics of your yacht?

Relatively fast, comfortable, stable, short keel allows me to sail in many more waters.

What did you do with your yacht during the winter?

It has been taken out of the water every year for maintenance.

What kind of maintenance or renewals have been carried out (with documentation as prove)?

Mast, sails, rigging, navigation equipment, sun cover, boiler, etc.

What are, according to you, future points of attention with regard to the maintenance of your yacht?

The sprayhood is showing its age

Which four keywords would you use to describe your yacht?

Very well maintained, practical, comfortable, safe.