



NAZAROV 80

BROKER'S COMMENTS

Step aboard the luxurious 24-meter power catamaran “Courage” and instantly feel at home. Built in 2020 and launched in 2024, this pristine yacht has less than 50 engine hours(!), unused from the first owner. It features 8 , air-conditioned guest cabins, as well as top-tier amenities. Relax in the lounge, enjoy the entertainment systems, or unwind at the wet bar. While designed with divers in mind, she is equally perfect for liveaboard living or global cruising.

Arjen Hoeksma

SPECIFICATIONS

Dimensions	24.00 x 8.20 x 1.55 (m)	Builder	Marsun Public Company Limited, Bangkok
Built	2020	Cabins	8
Material	GRP	Berths	16
Engine(s)	2 x Scania DI 16M 850 diesel	Hp/Kw	2 x 850.00 (hp), 625.60 (kw)
Asking price	€ 3.200.000 (VAT Not paid)	Lying	Thailand

CONTACT

Sales office	De Valk Dalmatia	Telephone	0031 653 299 244
Address	Ul. Velimira Skorpika 22000 Sibenik HR	E-mail	dalmatia@devalk.nl

DISCLAIMER

These particulars are given in good faith as supplied but cannot be guaranteed.



GENERAL

Model	NAZAROV 80
Type	catamaran motor yacht
LOA (m)	24,00
LWL (m)	22,37
Beam (m)	8,20
Draft (m)	1,55
Year built	2020
Launched	2024
Builder	Marsun Public Company Limited, Bangkok
Country	Thailand
Designer	Albatross Marine Design, Thailand
Displacement (t)	55
Gross tonnage	342
Net tonnage	47
CE norm	A
Hull material	GRP
Hull colour	white
Hull shape	Fast Displacement Hull
Superstructure material	GRP
Deck material	GRP
Deck finish	synthetic teak
Cockpit deck finish	teak
Antifouling (year)	2024
Window frame	yes
Window material	polycarbonate Tinted
Insulation	yes
Flybridge	yes
Fuel tank (litre)	GRP 1x 1,000 liter
Fuel tank 2 (litre)	2x 1,500 liter
Level indicator (fuel tank)	yes



Freshwater tank (litre)	GRP 2x 1,500 liter
Level indicator (freshwater)	yes
Blackwater tank (litre)	GRP 2x 300 liter
Level indicator (blackwater)	yes
Wheel steering	yes
Inside helm position	yes
Outside helm position	yes

ACCOMMODATION

Cabins	8
Berths	16
Floor	Upper level parquet, teak grating and mosaic tiles
Air-conditioning	Honeywell, all 8 twin cabins, saloon 28K BTU, cabins 10K BTU
Chart table	12V and 220V outlet
Sliding door to aft deck	Stainless steel
Countertop	Black granite
Sink	yes
Oven	yes
Fridge	Wet-bar main lounge
Freezer	60L behind galley SB
Wine cooler	In wet-bar main lounge
Hot water system	4x water heater 220V
Water pressure system	yes
Dishwasher	yes
Coffee maker	yes
Crockery	yes
Owners cabin	With private balcony
Wardrobe	hanging/drawers/shelves
Bathroom	en suite
Toilet	en suite
Toilet system	electric



Wash basin	in the bathroom
Shower	en suite
Guest cabin 1	double bed
Wardrobe	hanging/drawers/shelves
Bathroom	en suite
Toilet	en suite
Toilet system	electric
Wash basin	in the bathroom
Shower	en suite
Guest cabin 2	double bed
Wardrobe	hanging/drawers/shelves
Bathroom	en suite
Toilet	en suite
Toilet system	electric
Wash basin	in the bathroom
Guest cabin 3	double bed
Wardrobe	hanging/drawers/shelves
Bathroom	en suite
Toilet	en suite
Toilet system	electric
Wash basin	in the bathroom
Guest cabin 4	double bed
Wardrobe	hanging/drawers/shelves
Bathroom	en suite
Toilet	en suite
Toilet system	electric
Wash basin	in the bathroom
Shower	en suite
Crew cabin(s)	6 sleeps, 4 Port Side, 2 Starboard Side
Bathroom (crew)	en suite
Toilet (crew)	en suite
Toilet system	electric



Wash basin	in the bathroom
Shower (crew)	en suite
Extra info	1x Master cabin, 6x guest cabin, 1x Captain cabin
Washing machine	And dryer
Flybridge	yes
Extra info	Ceiling alcantara

MACHINERY

No of engines	2
Make	Scania
Type	DI 16M 850
HP	850
kW	625.60
Fuel	diesel
Maximum speed (kn)	22
Cruising speed (kn)	12
Engine cooling system	freshwater heat exchanger
Drive	shaft
Engine controls	2x motor-levers with engine control set ZF MC 2000-2
Gearbox	2x ZF 360A
Engine controls	yes
Bowthruster	Lewmar 300TT 24v
Exhaust	watercooled 2x
Propeller blades	2x 5-blade, NI AL Bz Gr Cu3
Propeller shaft material	Stainless steel 316L with P-bracket
Electric bilge pump	6x 24V pump 38l/MIN with aut. switch, 3 each hull
Generator	Mase 25 kW
Running hours generator	< 20 hours
Generator 2	Mase 34 kW
Running hours generator 2	< 20 hours
Batteries	yes



Start battery	2x 24V
Service battery	600 Ah 24V AGM battery pack
Battery charger	yes
Shorepower	yes

NAVIGATION

Compass	Riche
Electric compass	yes
Depth sounder/log	yes
VHF	Icom
Autopilot	Garmin
Radar	Garmin,
Plotter/GPS	Garmin, 12"
Radar/plotter	yes
AIS receiver	yes
Navigation lights	yes
Extra info	Led light ceiling and stairs to swim platform

EQUIPMENT

Bimini	Flybridge
Cockpit cushions	Blue
Cockpit table	yes
Cockpit chairs	yes
Bathing platform	yes
Boarding ladder	Stainless steel swim ladder SB with teak steps
Anchor	80kg
Anchor chain	100 meters
Chain counter	yes
Windlass	yes
Capstan	yes
Dinghy	Zhao Yue, 6,20m Outboard 4 stroke 15 HP



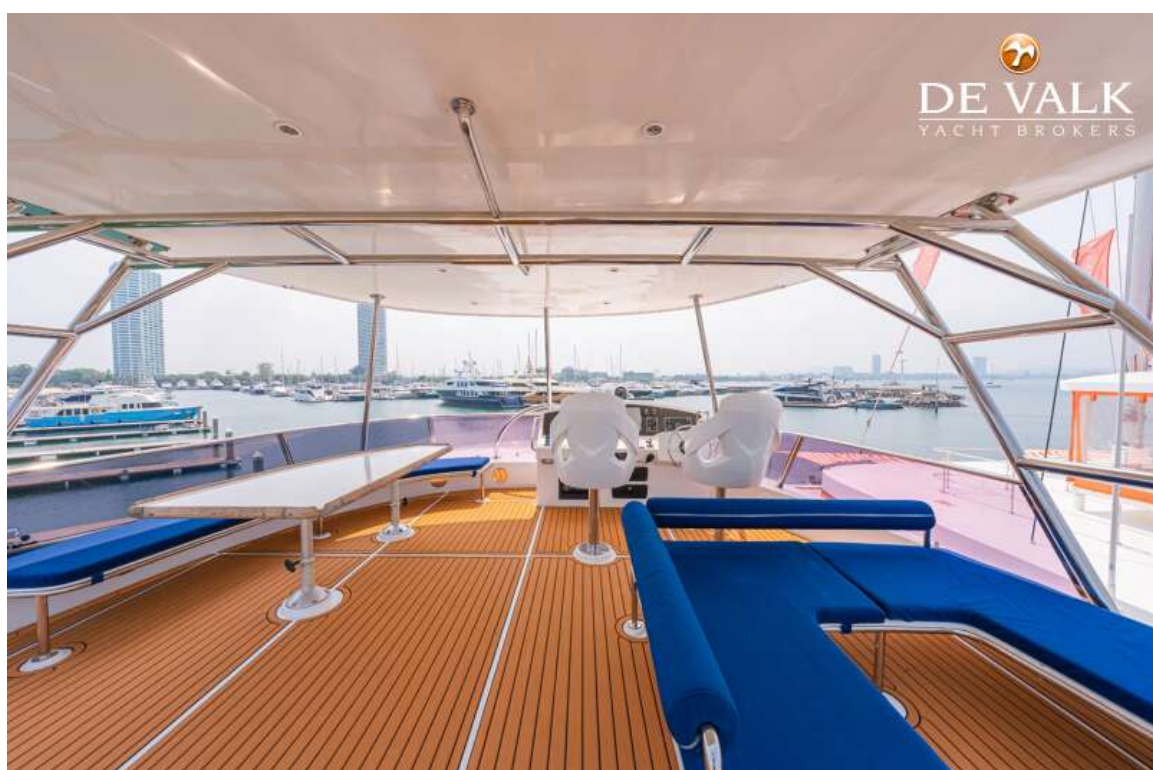
Davits	Loads up to 150 kg
Sea railing	Teakwood and stainless steel
Life raft	MSC-K25
Lifejackets	65
Lifebuoy	8
Radar reflector	yes
Fenders	yes
Mooring lines	yes
TV	Samsung 42"
Radio-cd player	yes
Cockpit speakers	yes
Fire extinguisher	Plus smoke detector
Extra info	Foodlift electric between galley and wet-bar



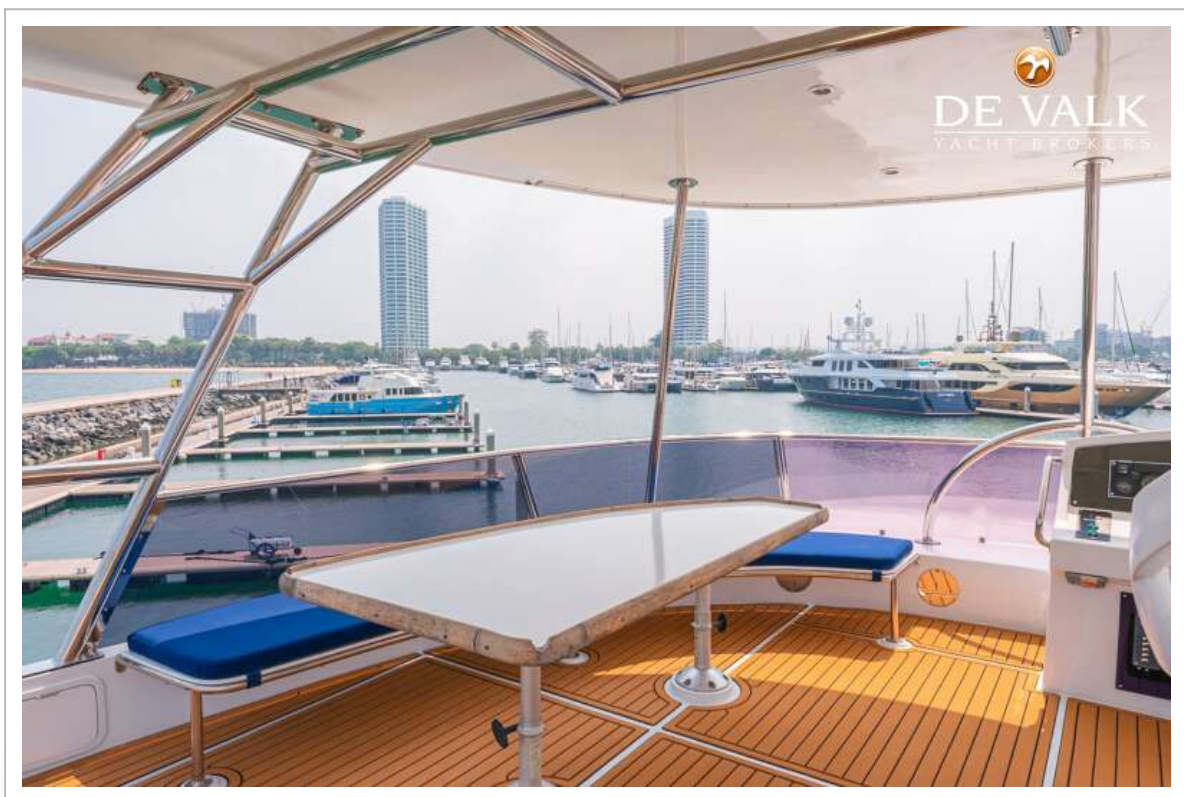
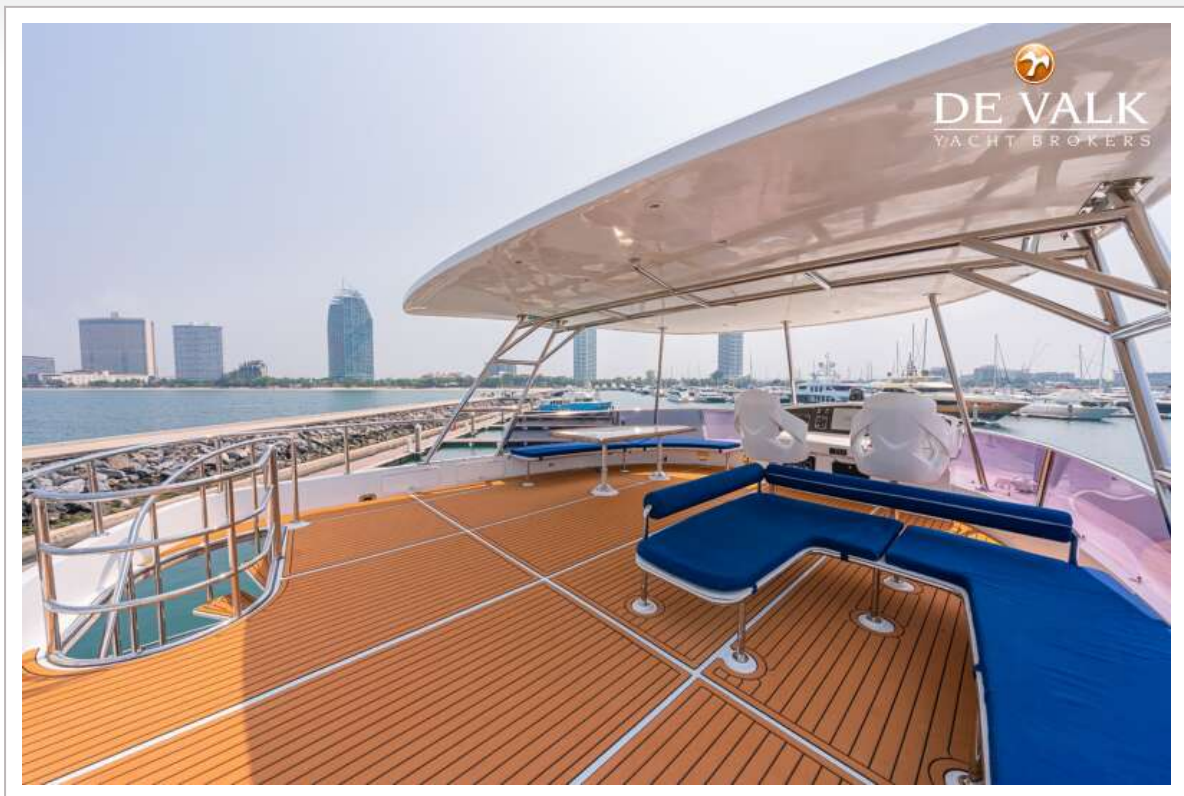
NAZAROV 80



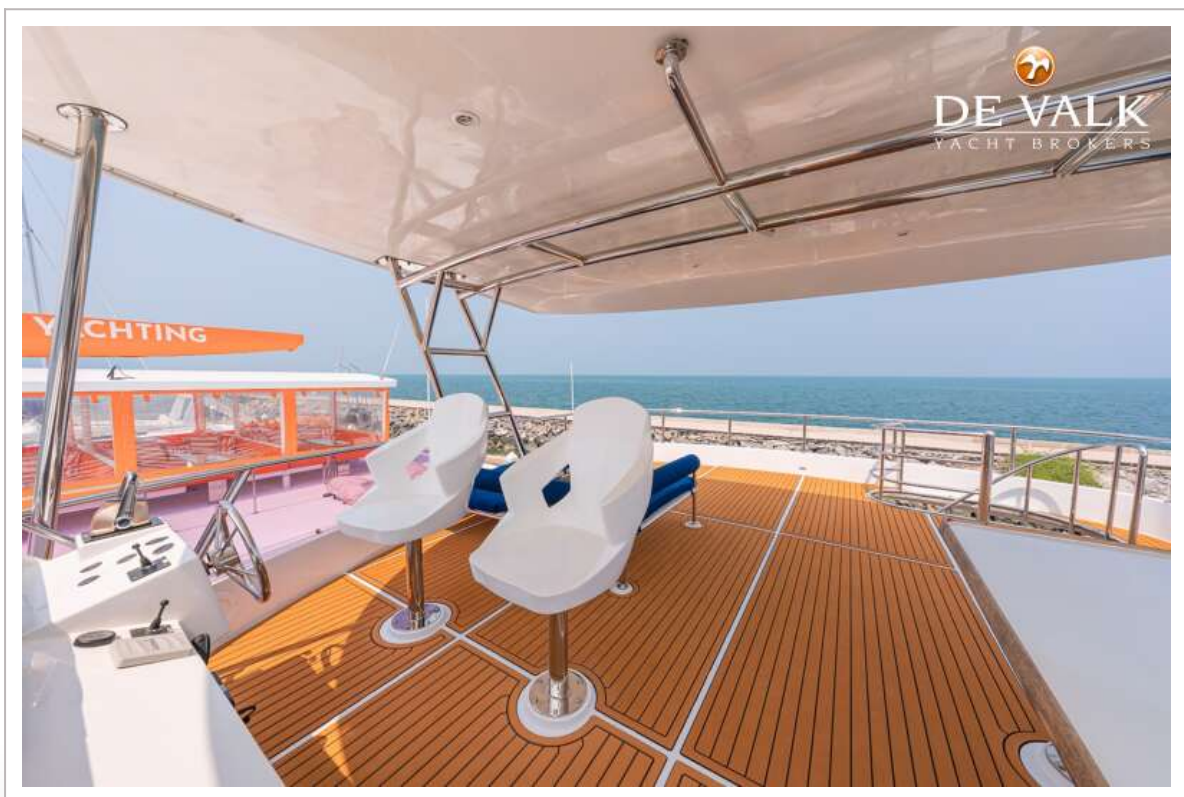
NAZAROV 80



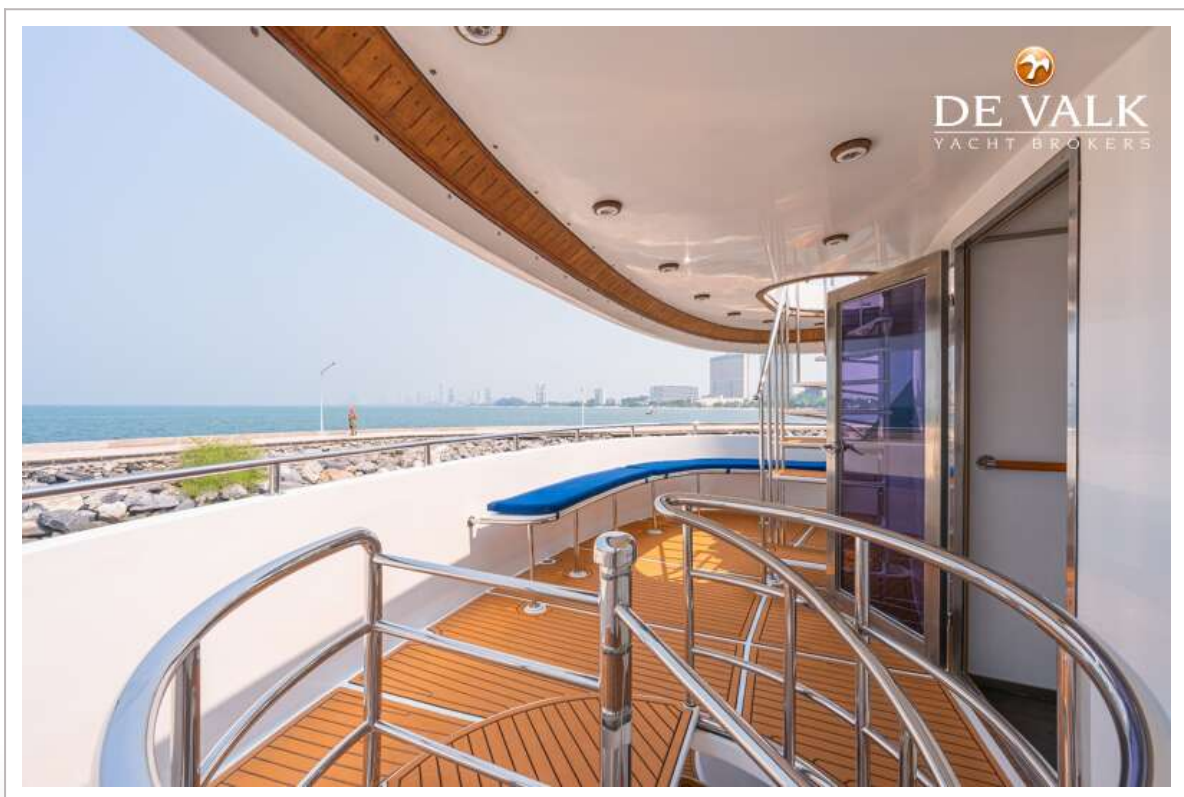
NAZAROV 80



NAZAROV 80

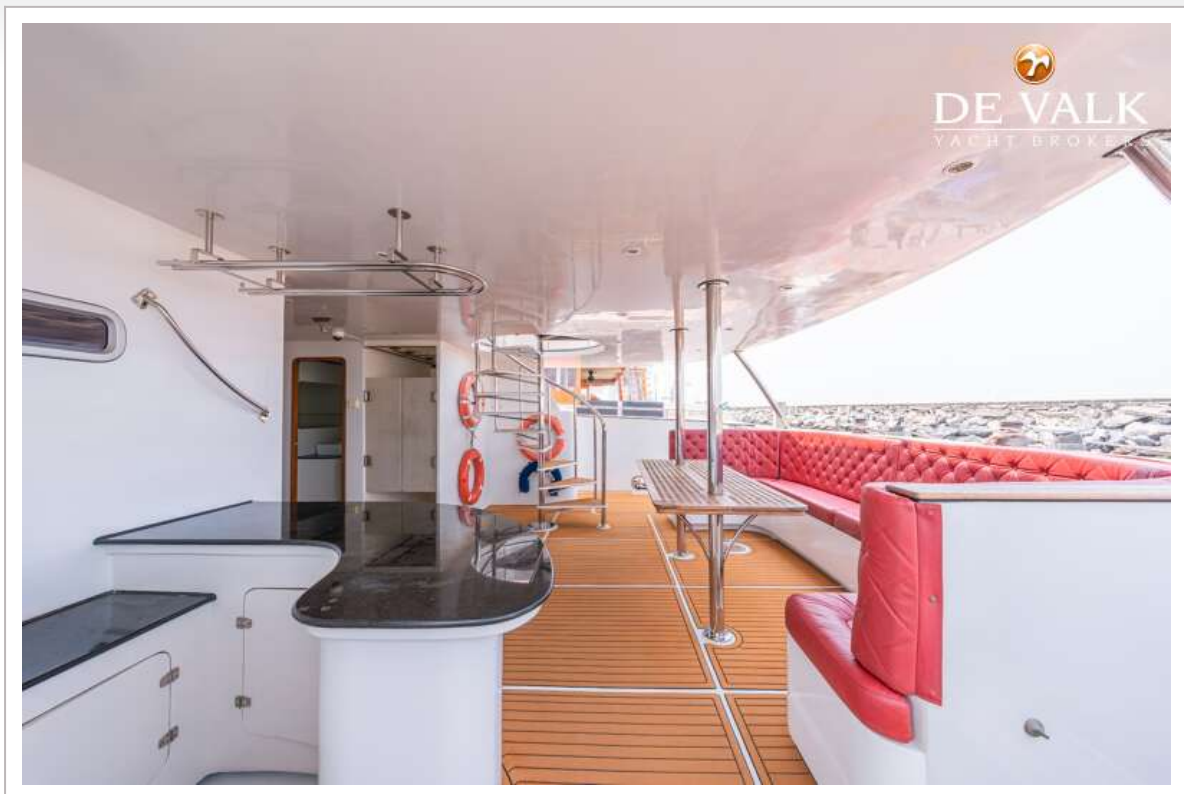


NAZAROV 80

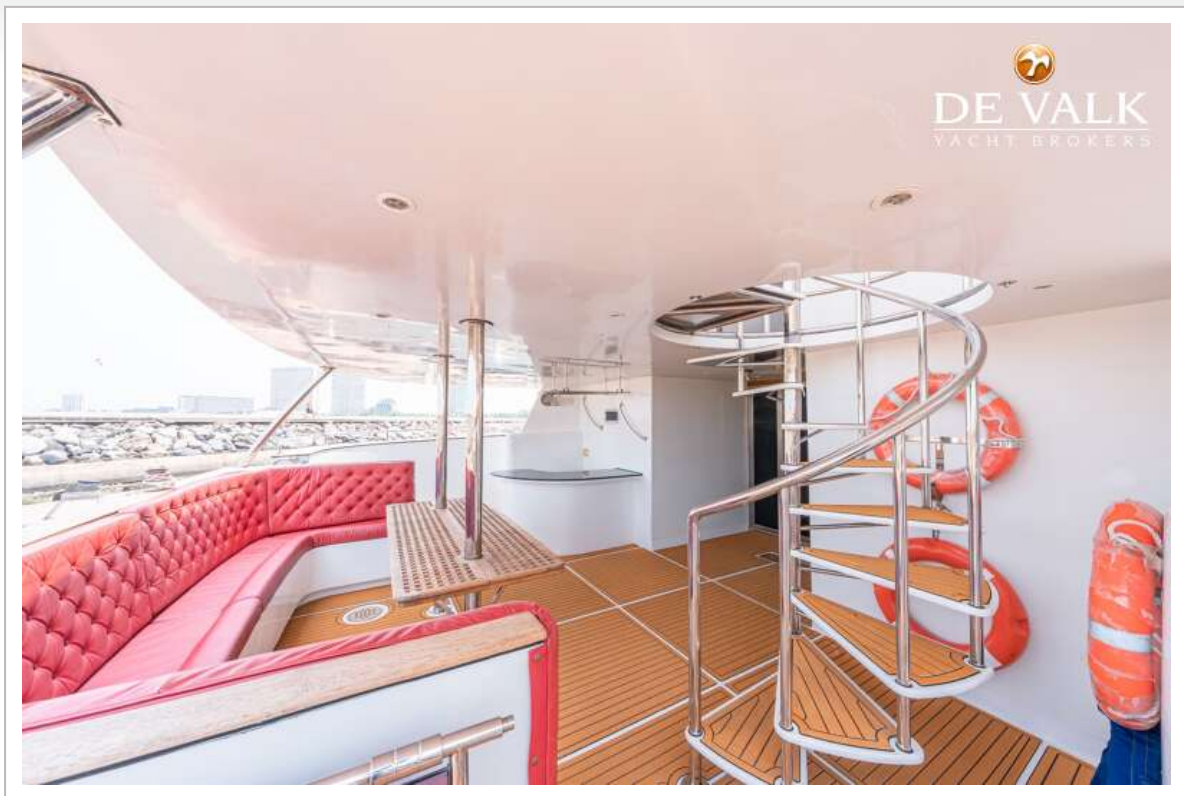


NAZAROV 80



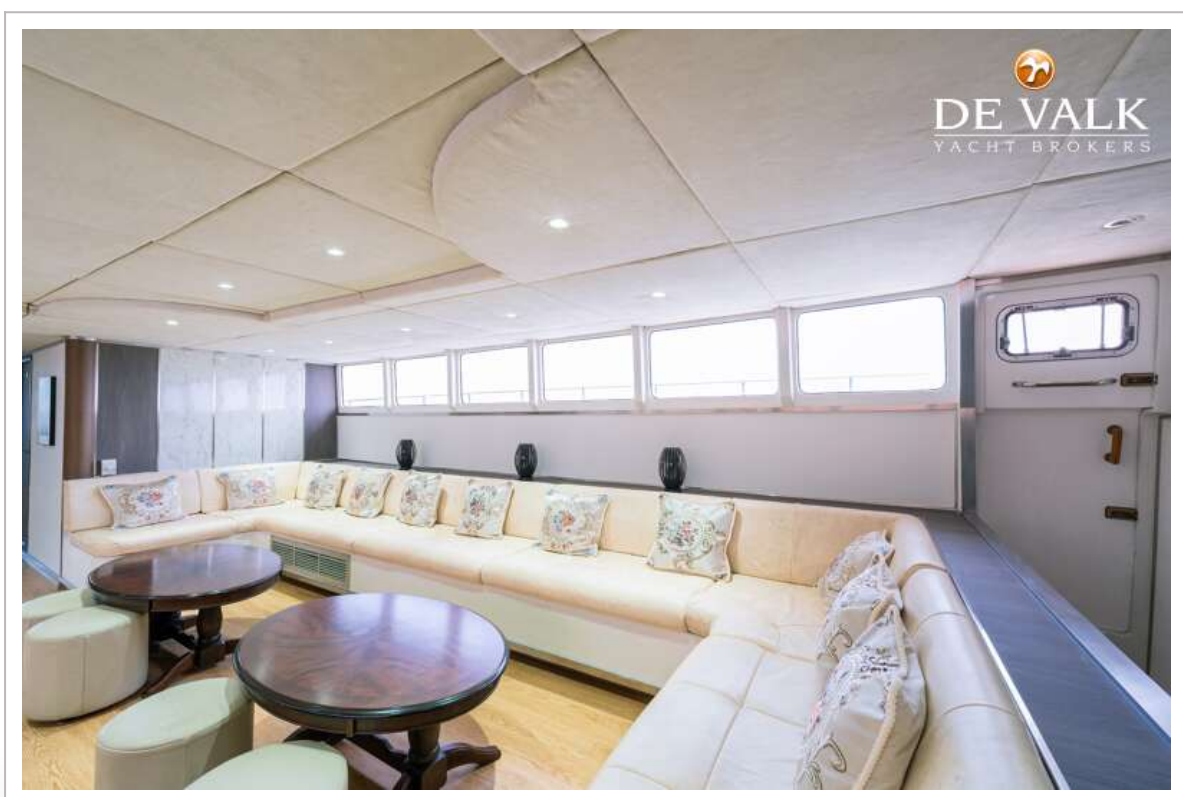


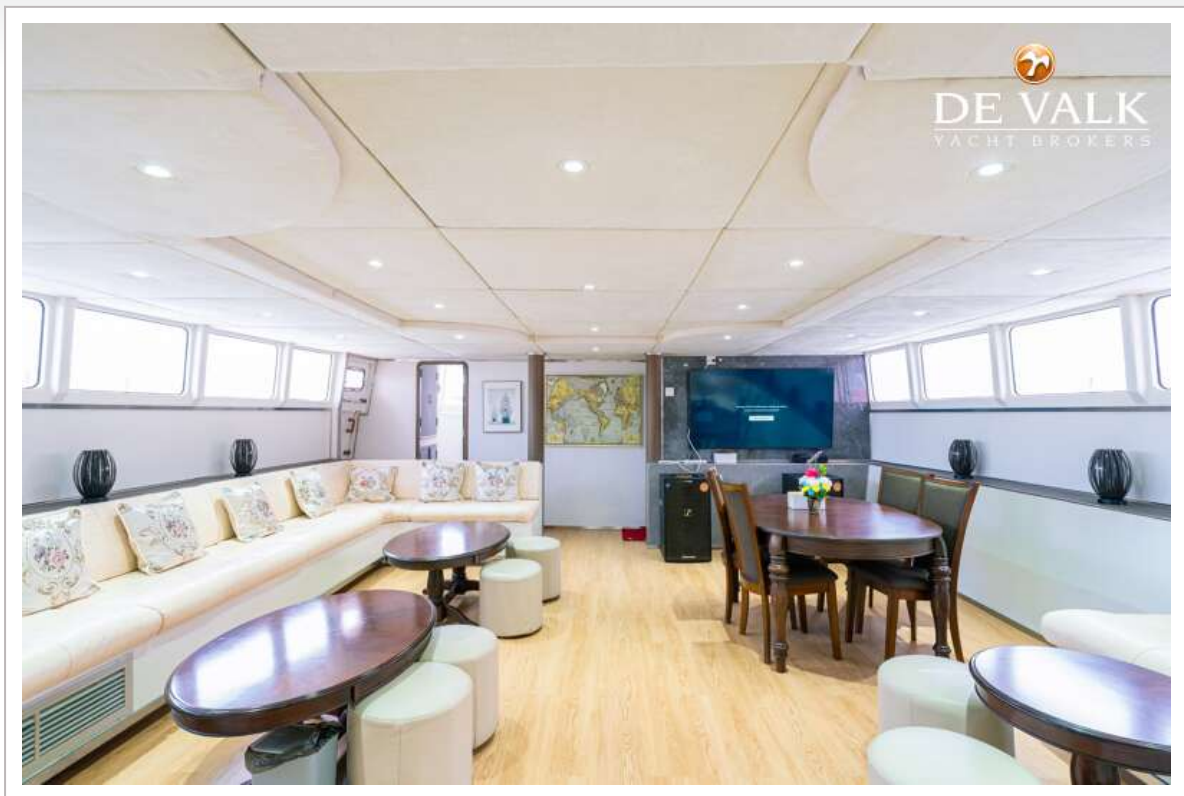
NAZAROV 80

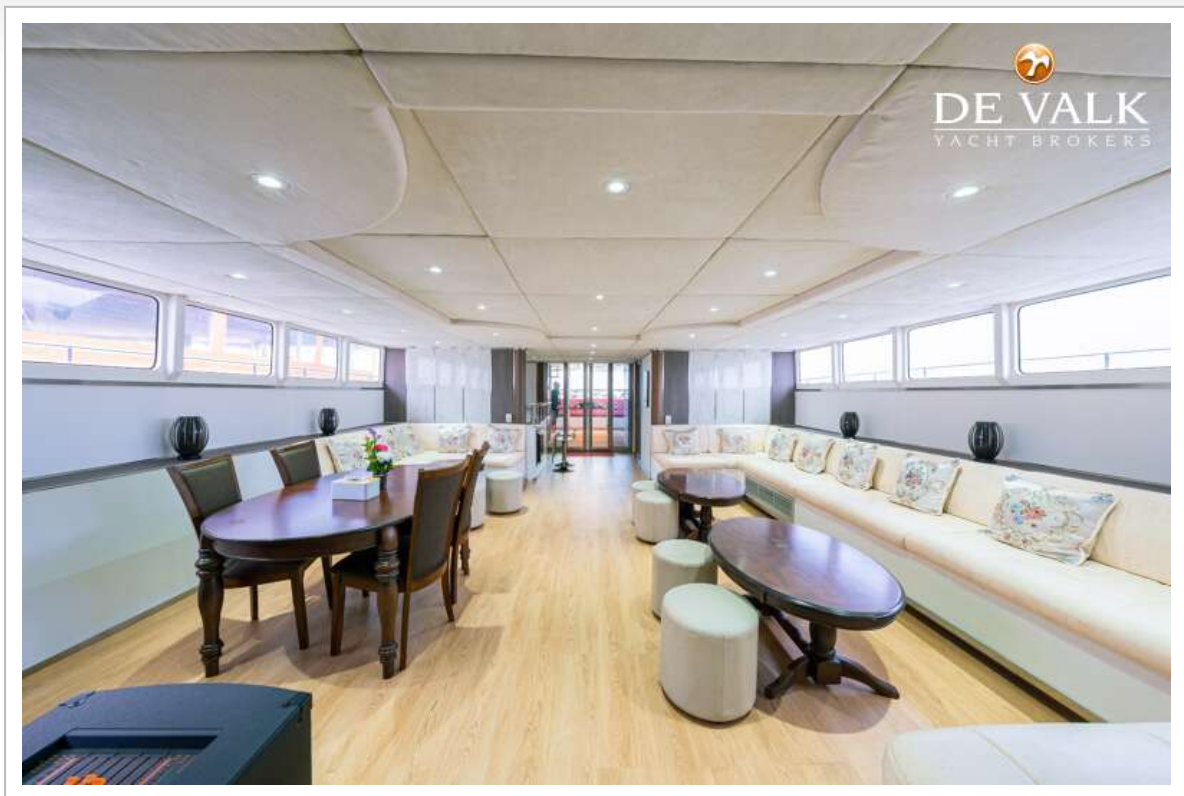


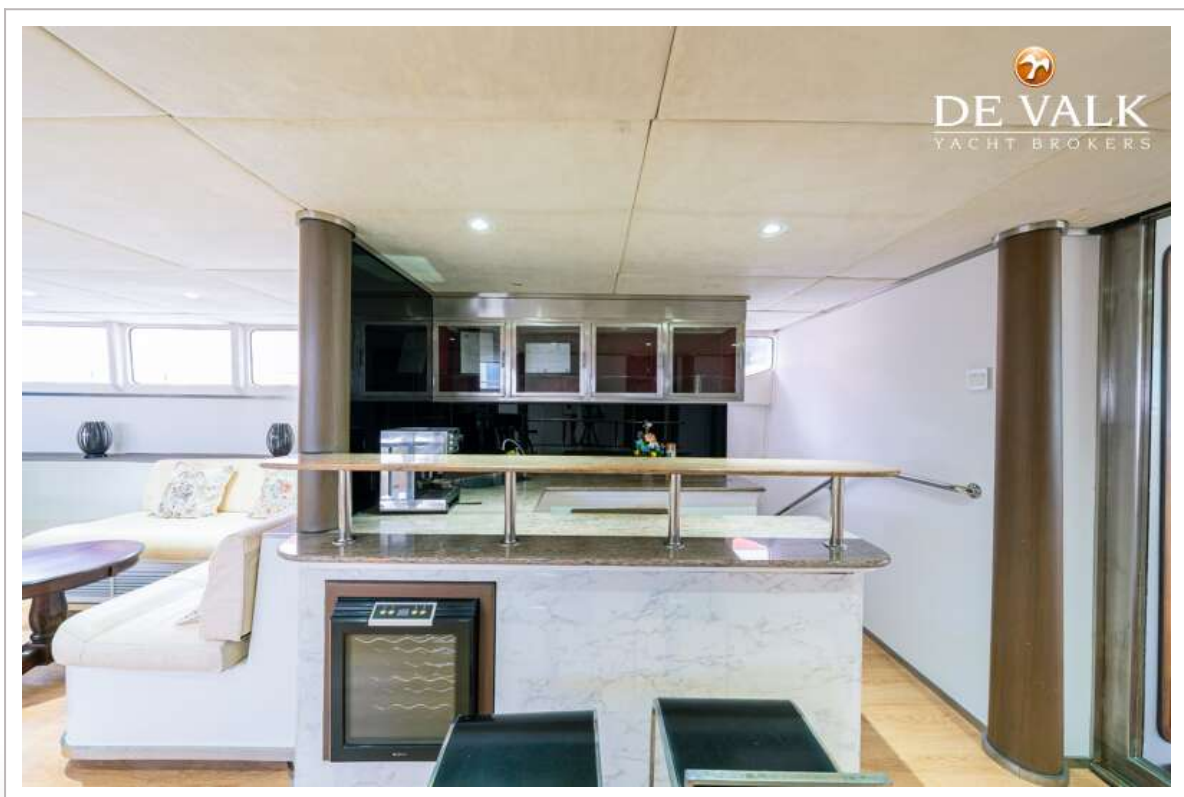
NAZAROV 80

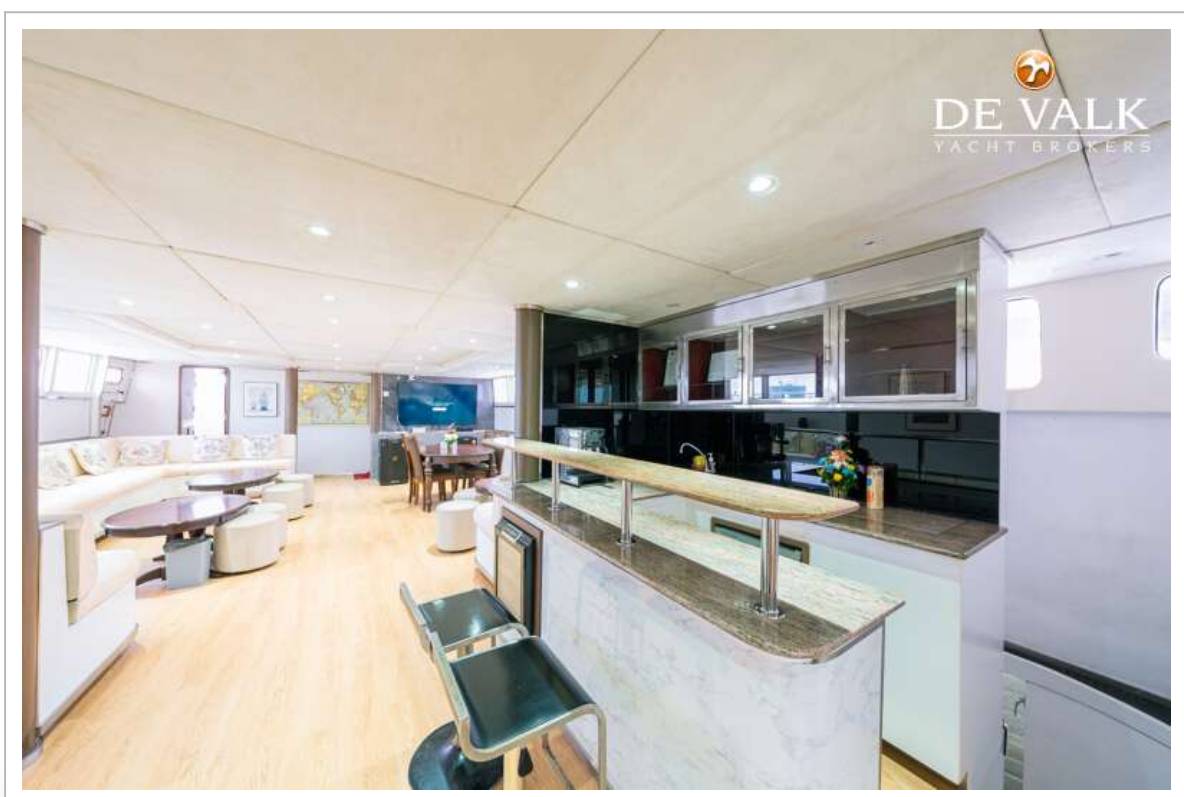














NAZAROV 80

