



SEALINE 450 STATESMAN

SEALINE 450 STATESMAN

BROKER'S COMMENTS

The Sealine 450 Statesman offers with a practical design an unique use of space. The combination of sporty and comfort is ideal for families and entertaining friends. The sociable saloon and well designed accomodation areas combines everyday utility with style and performance.

Jeanne Stukstette

SPECIFICATIONS

Dimensions	13.95 x 4.25 x 1.14 (m)	Builder	Kidderminster
Built	1995	Cabins	2
Material	GRP	Berths	6
Engine(s)	2 x Volvo penta TAM 71B diesel	Hp/Kw	2 x 380.00 (hp), 279.68 (kw)
Asking price	€ 179.000 (VAT Paid)	Lying	at sales office

CONTACT

Sales office	De Valk Limburg	Telephone	+31 630372559
Address	Schippersveld 3 6019 DE Wessem NL	E-mail	limburg@devalk.nl

DISCLAIMER

These particulars are given in good faith as supplied but cannot be guaranteed.



SEALINE 450 STATESMAN

GENERAL

Model	SEALINE 450 STATESMAN
Type	motor yacht
LOA (m)	13,95
Beam (m)	4,25
Draft (m)	1,14
Air draft (m)	4,15
Headroom (m)	1,90
Year built	1995
Builder	Kidderminster
Country	United Kingdom
Designer	Sealine
Displacement (t)	12
Hull material	GRP
Hull colour	white
Hull shape	deep-V
Keel type	long keel
Superstructure material	GRP
Rubbing strake	stainless steel
Deck material	GRP
Deck finish	non-skid moulded in
Superstructure deck finish	teak
Cockpit deck finish	teak
Antifouling (year)	2023/2024
Dorades	5
Window frame	aluminium
Deckhatch	1
Flybridge	yes
Flybridge cover	yes
Flybridge cockpit cover	yes
Flybridge suncover	yes



SEALINE 450 STATESMAN

Radar arch	yes
Fuel tank (litre)	stainless steel 1320 Li
Level indicator (fuel tank)	yes
Freshwater tank (litre)	stainless steel 440 Li
Level indicator (freshwater)	yes
Blackwater tank (litre)	yes
Level indicator (blackwater)	yes
Wheel steering	hydraulic
Flybridge helm position	hydraulic
More info on hull	Perfect condition, no damages
Extra info	yearly winterstorage in shed
Extra info	yearly service history with invoices available

ACCOMMODATION

Cabins	2
Berths	6
Interior	mahogany
Floor	carpet
Open cockpit	yes
Aft deck	yes
Saloon	yes
Headroom saloon (m)	1,90
Sliding roof	yes
Heating	diesel ducted hot air
Air-conditioning	Cruisair
Dining room	yes
Dinette	yes
Sliding door to aft deck	yes
Countertop	?
Sink	yes
Cooker	ceramic 2



SEALINE 450 STATESMAN

Oven	yes
Microwave	yes
Fridge	yes
Freezer	Zanussi
Hot water system	220V + engine
Water pressure system	electrical
Owners cabin	double bed
Bed length (m)	yes
Wardrobe	yes
Toilet	en suite
Toilet system	electric
Wash basin	yes
Shower	yes
Guest cabin 1	double bed
Bed length (m)	yes
Wardrobe	yes
Toilet	en suite
Toilet system	manual
Wash basin	yes
Flybridge	yes

MACHINERY

No of engines	2
Make	Volvo penta
Type	TAM 71B
HP	380
kW	279.68
Fuel	diesel
Year installed	1995
Maximum speed (kn)	31
Cruising speed (kn)	21



SEALINE 450 STATESMAN

Engine cooling system	freshwater heat exchanger
Shaft seal	yes
Engine controls	bowden cable
Gearbox	yes
Engine controls	bowden cable
Bowthruster	electric
Exhaust	watercooled
Propeller type	fixed
Propeller blades	4
Propeller shaft material	steel
Shaft lubrication	yes
Manual bilge pump	yes
Electric bilge pump	yes
Generator	wet exhaust Mitsubishi 6Kva
Running hours generator	yes
Batteries	yes
Start battery	yes
Service battery	yes
Sternthruster battery	yes
Inverter	yes
Battery charger/inverter	yes
Shorepower	yes
Trimtabs	yes

NAVIGATION

Compass	2x
Depth sounder	yes
Windset	RAYMARINE ST40
VHF	SHIPMATE 8300
Autopilot	AUTOHELM ST7000
Rudder angle indicator	yes



SEALINE 450 STATESMAN

Radar	ROTOR NOT FUNCTIONING
Plotter/GPS	RAYMARINE C70
Navigation lights	yes

EQUIPMENT

Fixed windscreen	yes
Bimini	yes
Cockpit cushions	yes
Cockpit table	yes
Cockpit chairs	yes
Bathing platform	yes
Boarding ladder	yes
Deck shower	WARM WATER
Anchor	Delta ELECTRIC 16KG
Anchor chain	yes
Deck wash	yes
Dinghy	rigid inflatable GRAND
Outboard	Suzuki 15 pk
Davits	stainless steel
Davits controls	electrical
Deck crane	yes
Sea railing	yes
Life raft	yes
Lifejackets	yes
Lifebuoy	yes
Wiper	yes
Horn	yes
Fenders	yes
Mooring lines	yes
TV	yes
TV receiver	yes



SEALINE 450 STATESMAN

Radio	yes
Cockpit speakers	yes
Speakers in salon	yes
Fire extinguisher	yes



SEALINE 450 STATESMAN



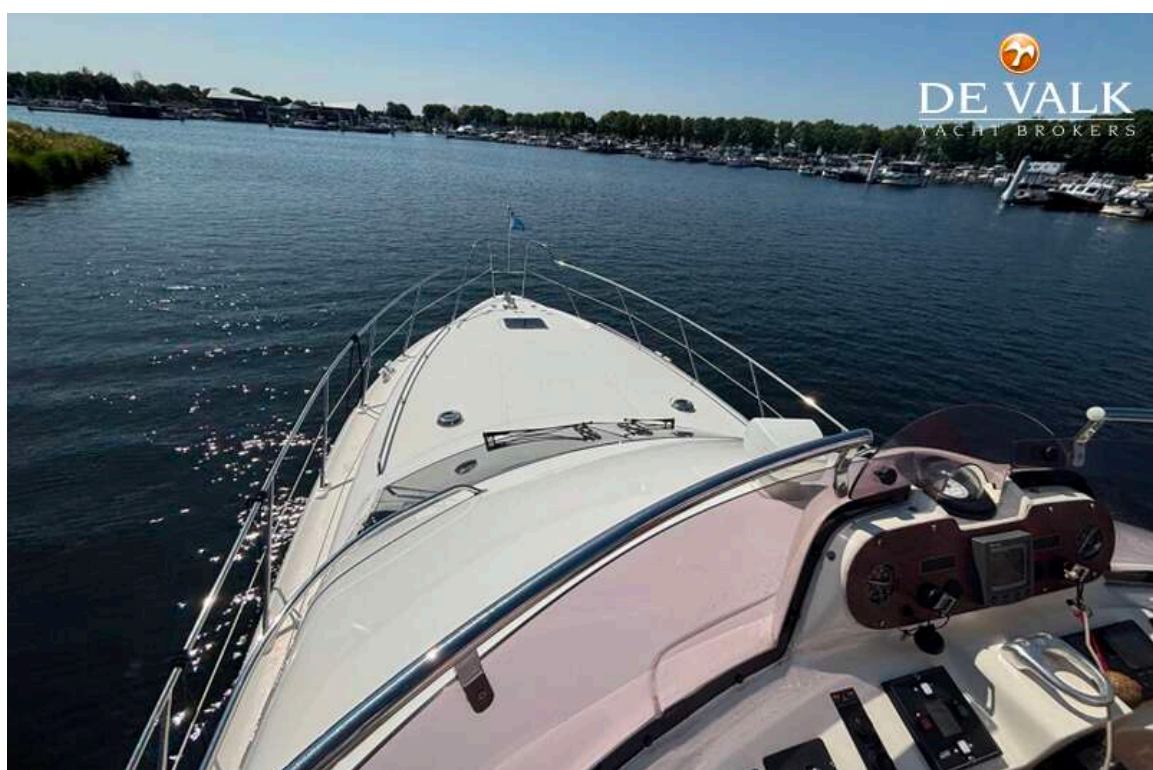
SEALINE 450 STATESMAN



SEALINE 450 STATESMAN



SEALINE 450 STATESMAN



SEALINE 450 STATESMAN



SEALINE 450 STATESMAN



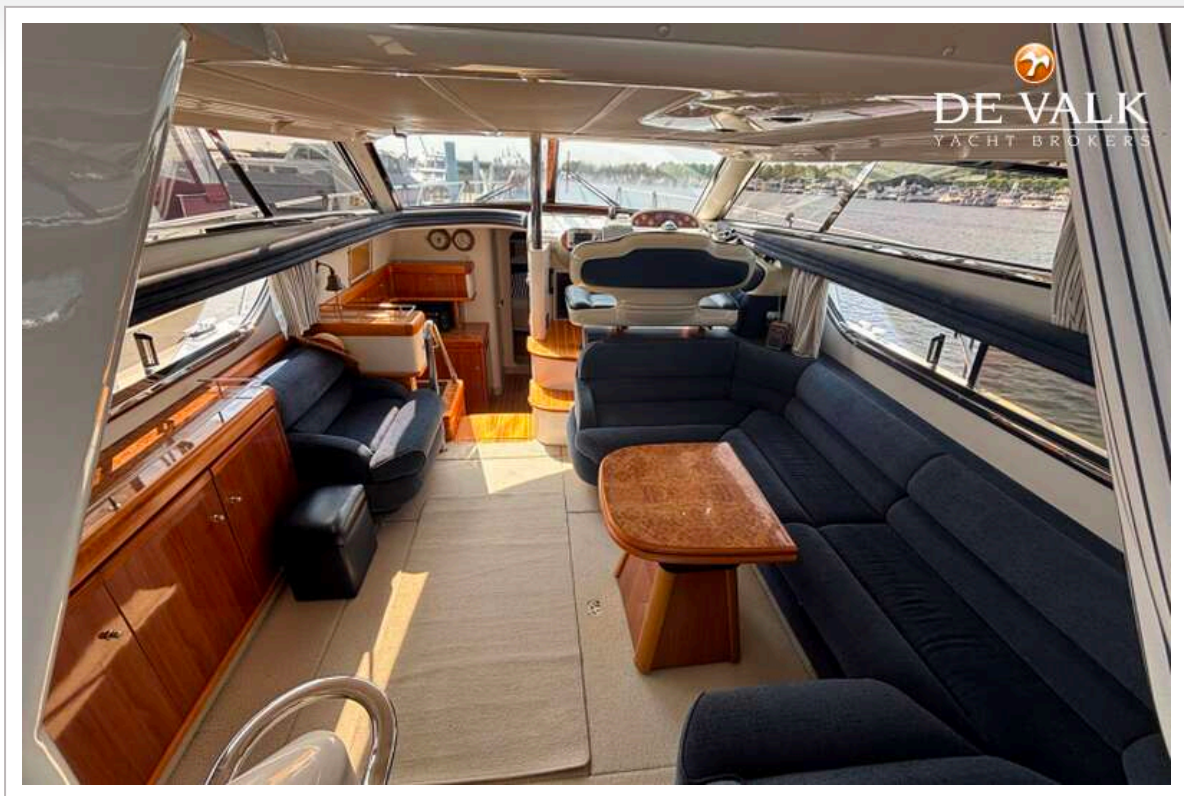
SEALINE 450 STATESMAN



SEALINE 450 STATESMAN



SEALINE 450 STATESMAN



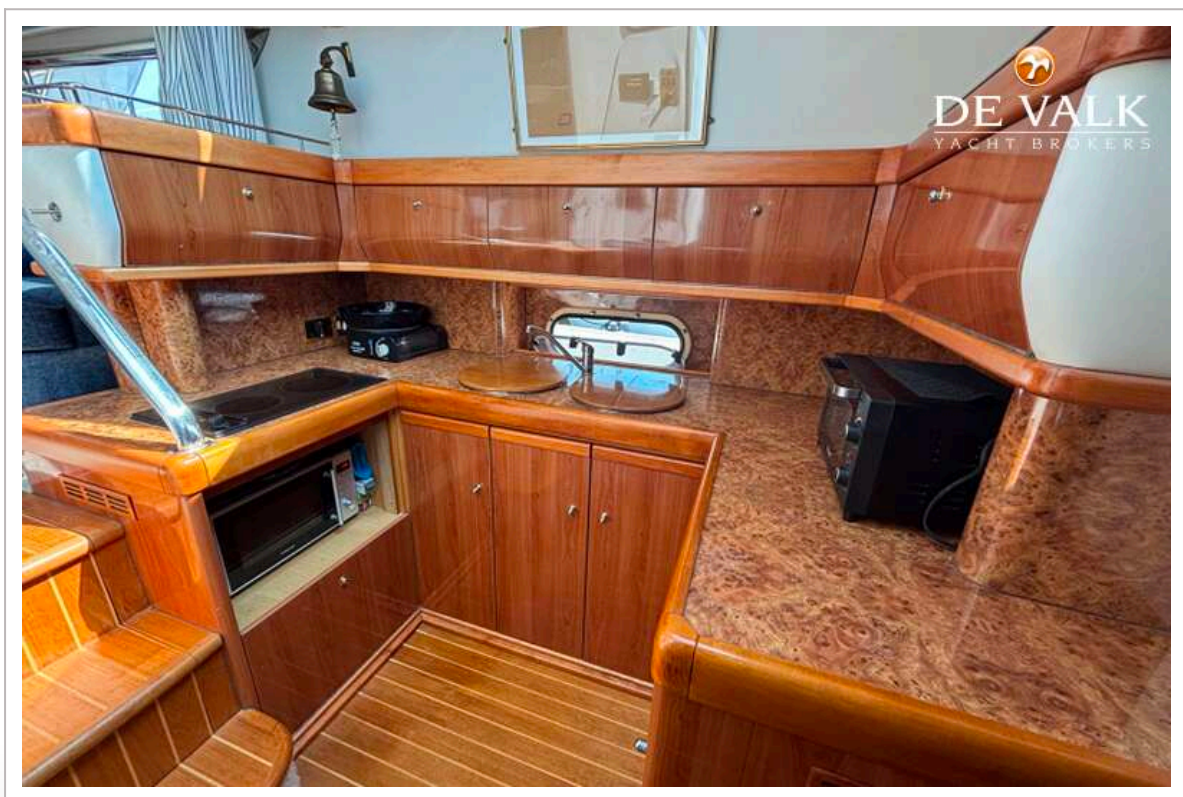
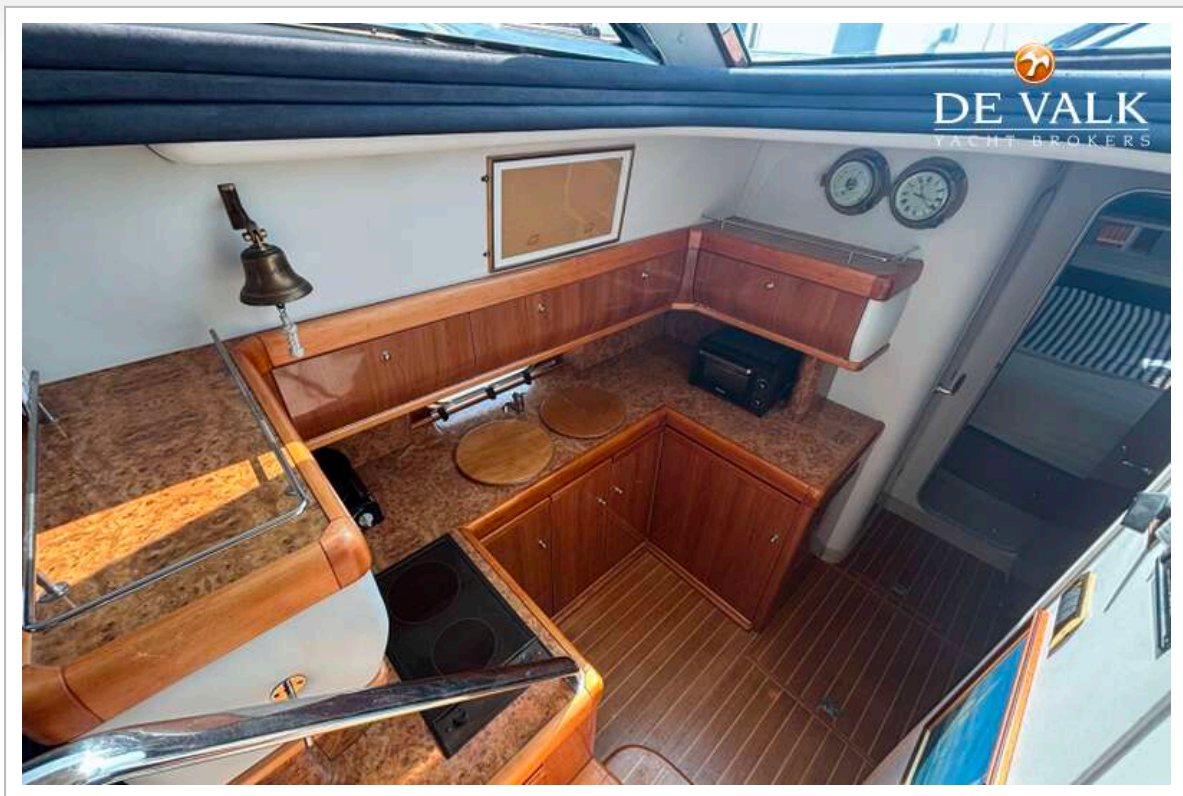
SEALINE 450 STATESMAN



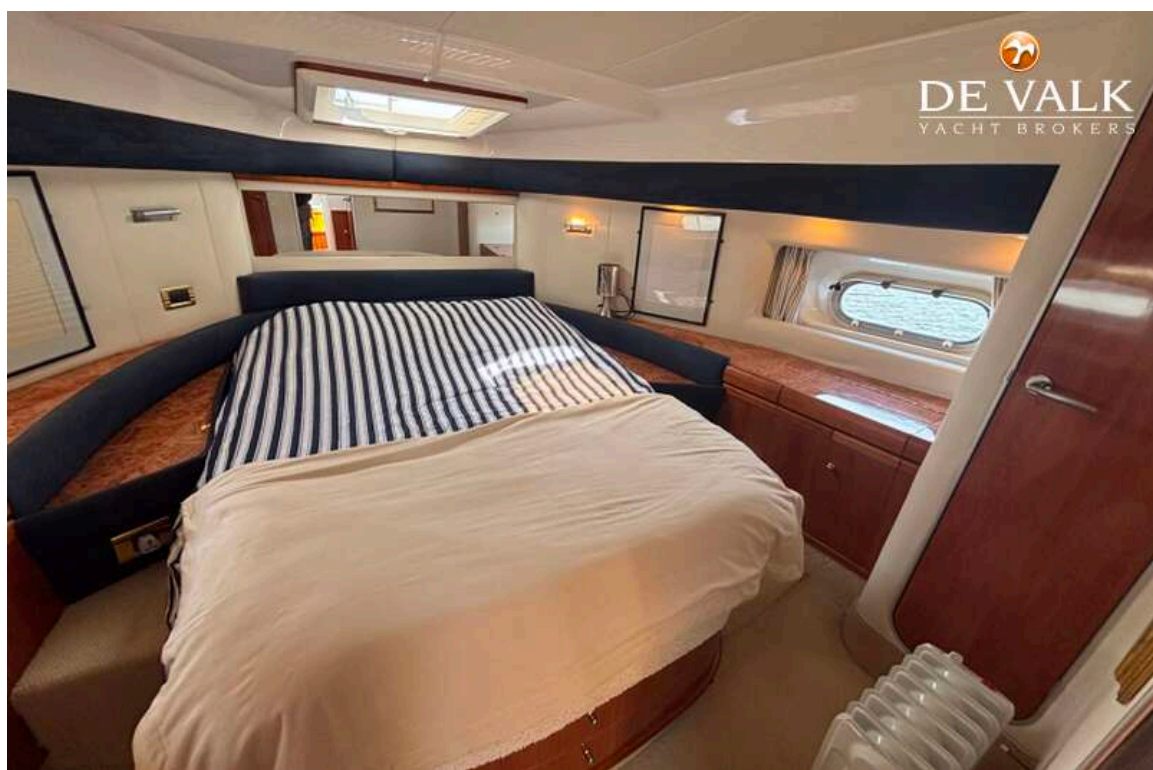
SEALINE 450 STATESMAN



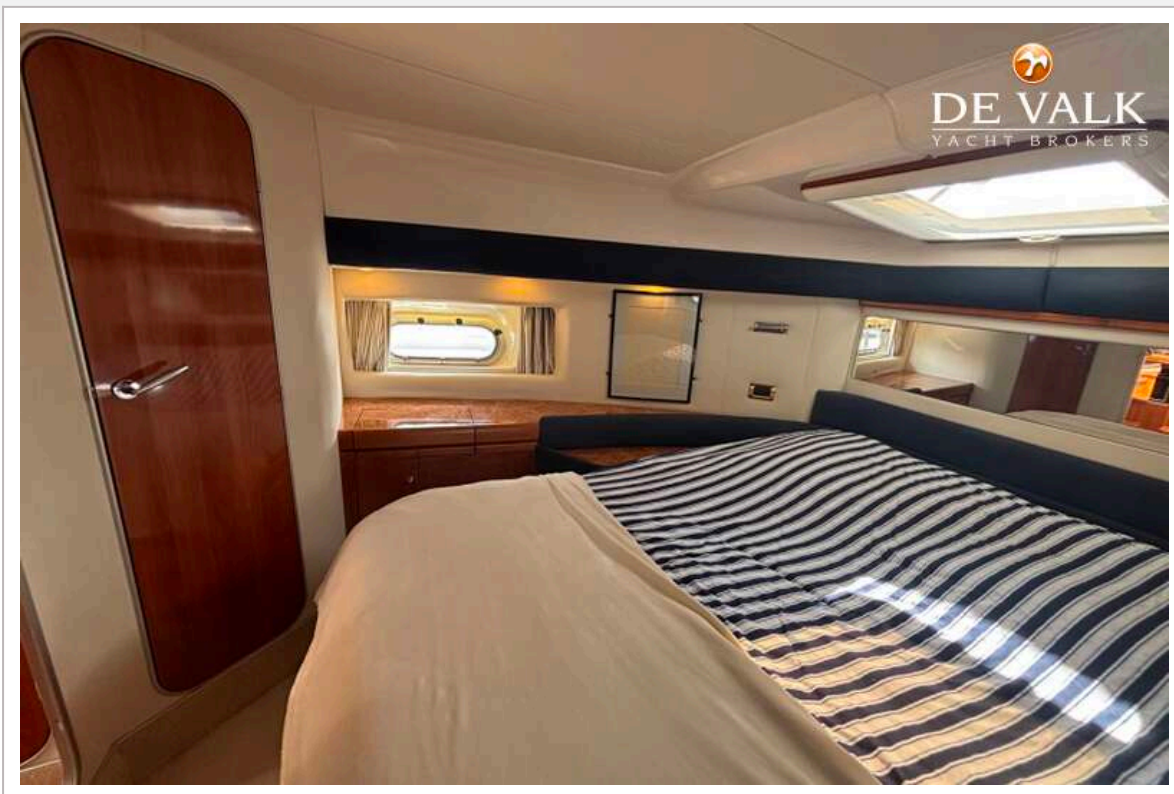
SEALINE 450 STATESMAN



SEALINE 450 STATESMAN



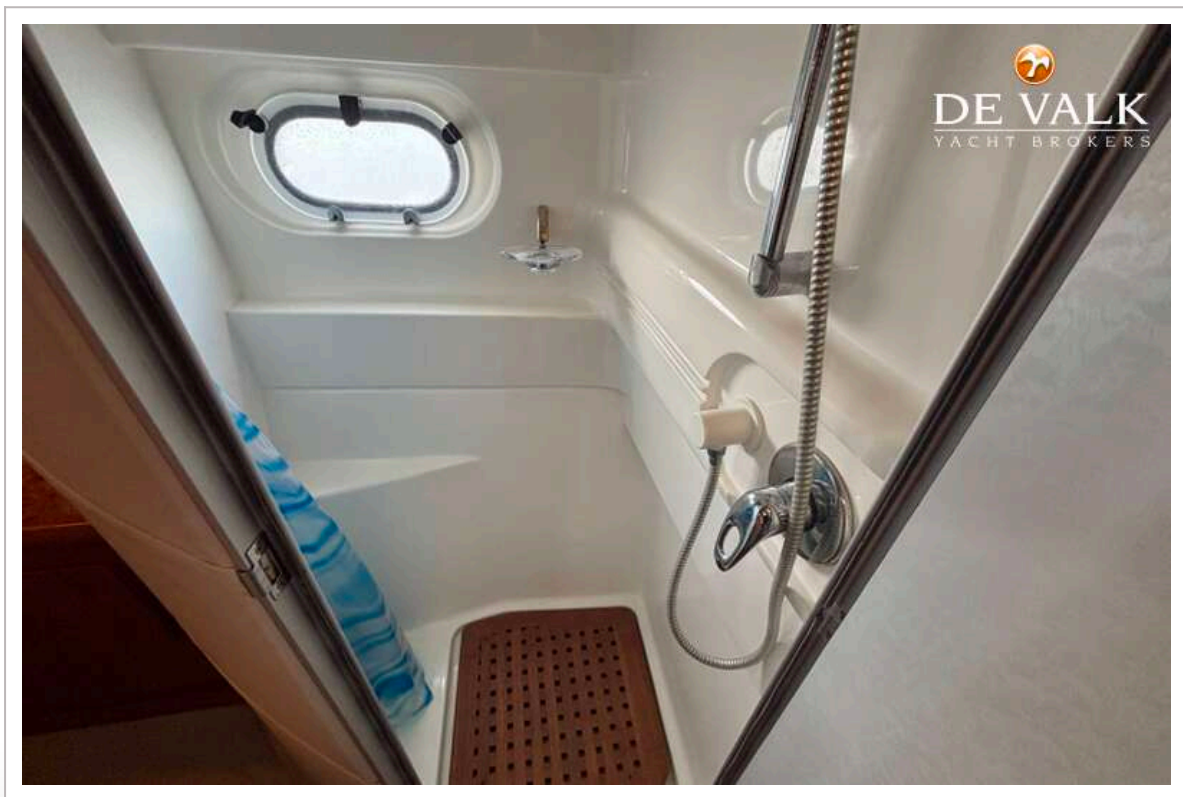
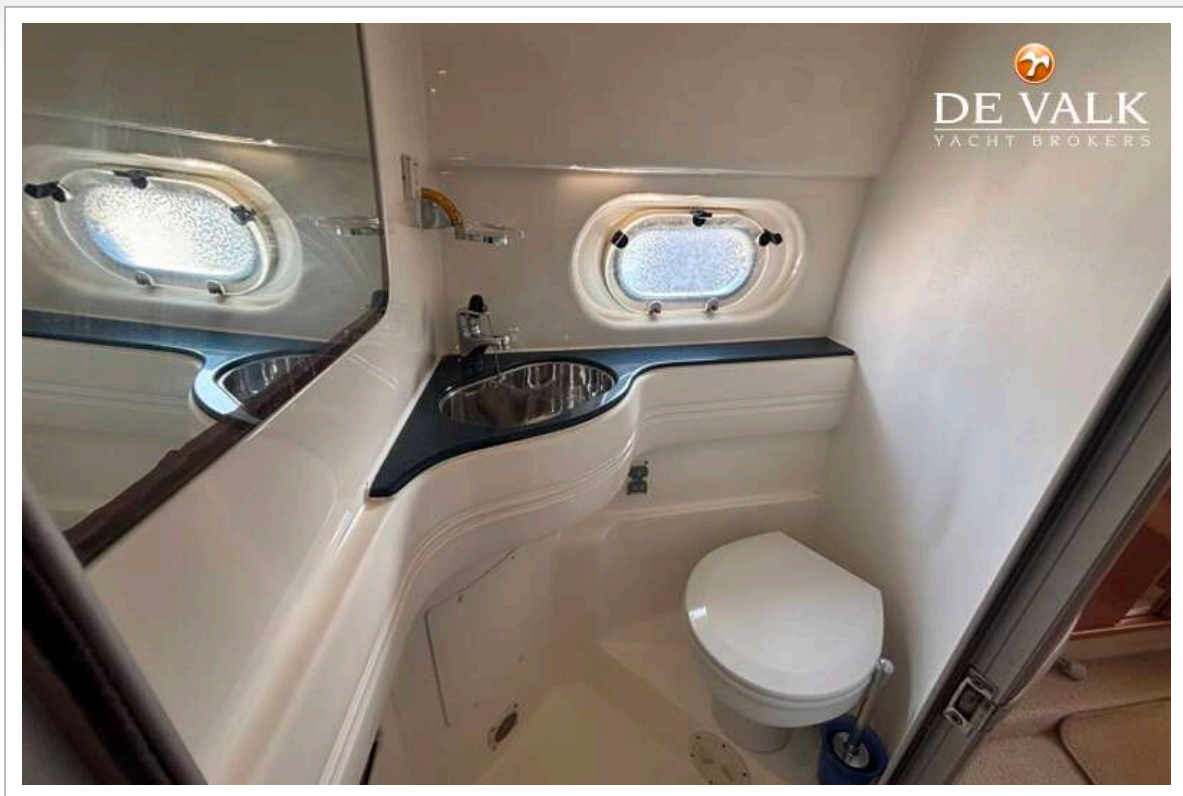
SEALINE 450 STATESMAN



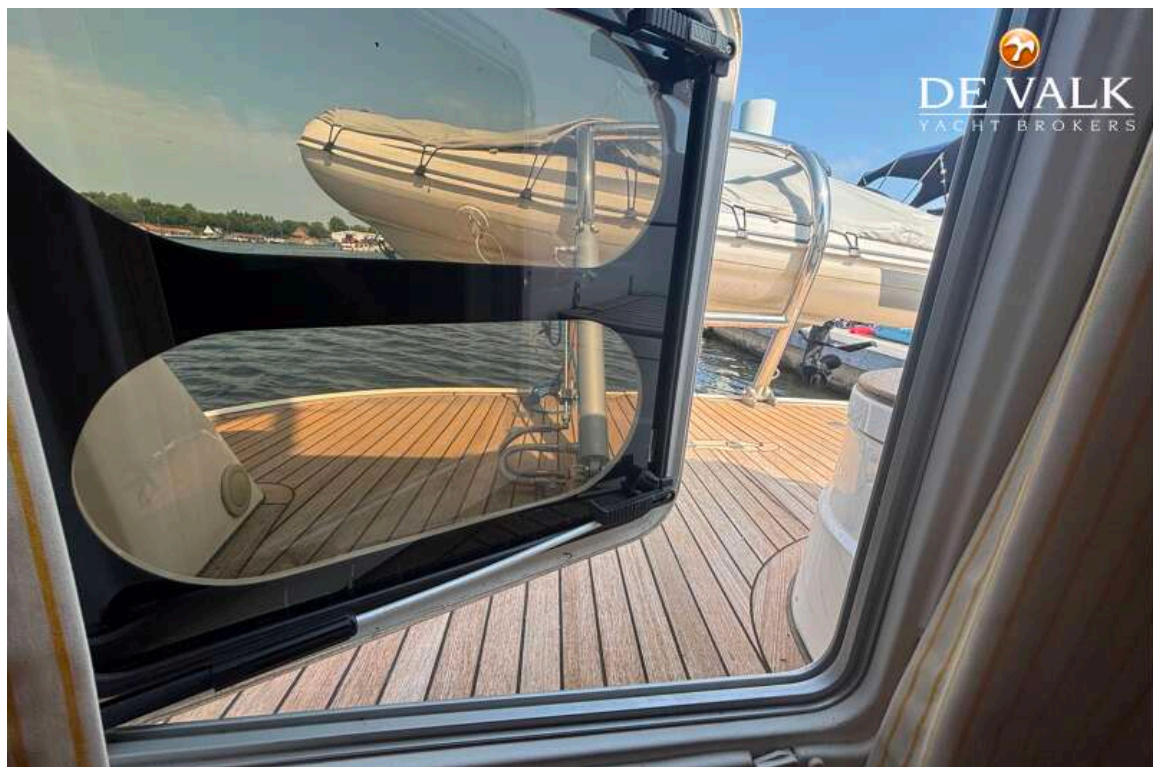
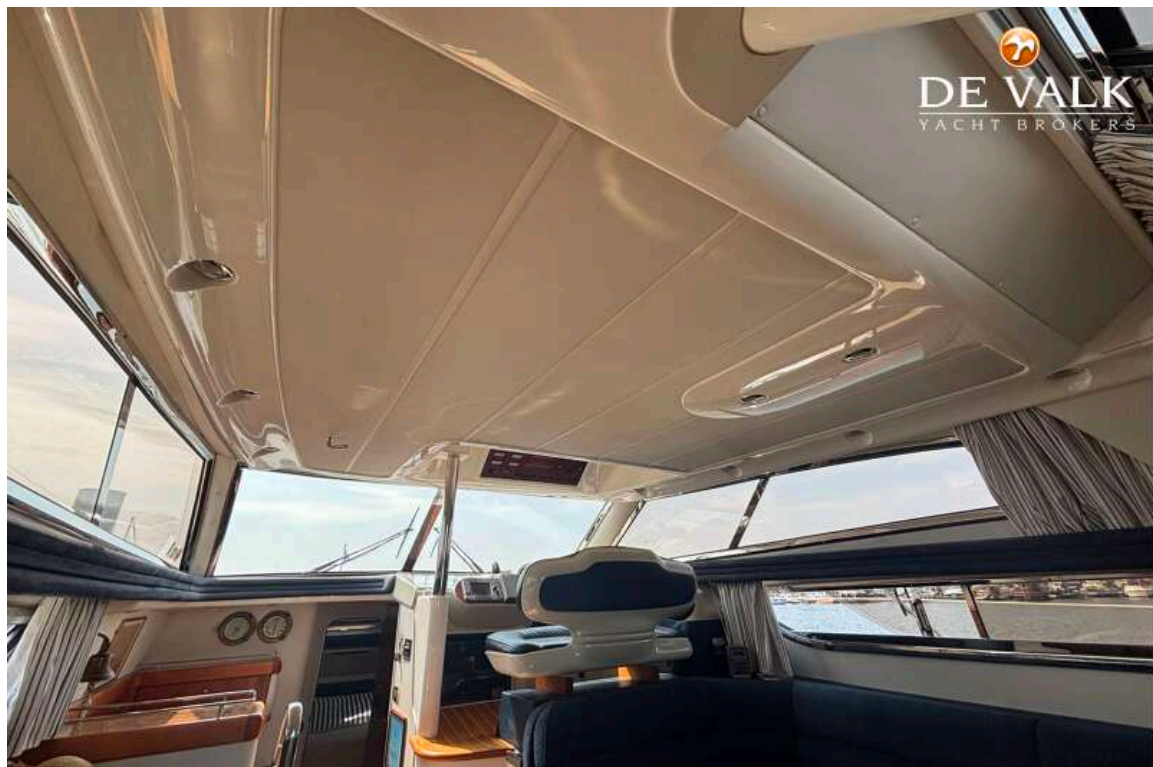
SEALINE 450 STATESMAN



SEALINE 450 STATESMAN



SEALINE 450 STATESMAN



SEALINE 450 STATESMAN



SEALINE 450 STATESMAN

