



DE VALK
YACHT BROKERS



BENETEAU OCEANIS 40



DE VALK
YACHT BROKERS

BENETEAU OCEANIS 40

BROKER'S COMMENTS

Beneteau Oceanis 40 is an owner's version yacht that combines comfort and performance. She has generous spaces all of modern and elegant design. The boat is Dutch registered and is being sold by its first owner, who have had it in private use only. Currently located in Preveza Greece.

Sofia Iliia-Salvanou

SPECIFICATIONS

Dimensions	12.16 x 3.98 x 2.00 (m)	Builder	BENETEAU
Built	2007	Cabins	2
Material	GRP	Berths	6
Engine(s)	1 x YANMAR 3JH4E diesel	Hp/Kw	40.00 (hp), 29.44 (kw)
Asking price	€ 93.000 (VAT Not paid)	Lying	elsewhere / Not at sales office

CONTACT

Sales office	De Valk Corfu	Telephone	(+30) 6948681503
Address	New Port of Corfu, near Gouvia Marina 490 83 Corfu GR	E-mail	corfu@devalk.nl

DISCLAIMER

These particulars are given in good faith as supplied but cannot be guaranteed.



BENETEAU OCEANIS 40

GENERAL

Model	BENETEAU OCEANIS 40
Type	sailing yacht
LOA (m)	12,16
Beam (m)	3,98
Draft (m)	2,00
Headroom (m)	2,00
Year built	2007
Builder	BENETEAU
Country	France
Designer	Berret-Racoupeau/Nauta
Gross tonnage	13
Net tonnage	3
CE norm	A
Hull material	GRP
Hull colour	white
Keel type	fin keel
Deck material	GRP
Deck finish	non-skid moulded in Side deck
Cockpit deck finish	teak
Deckhatch	yes
Portholes	yes
Fuel tank (litre)	stainless steel 200
Level indicator (fuel tank)	yes
Freshwater tank (litre)	polyethylene 200
Blackwater tank (litre)	yes
Blackwater tank extraction	Three way valve for toilet
Wheel steering	X 2
Extra info	One / first owner since new
Extra info	DUTCH FLAG



ACCOMMODATION

Cabins	2
Berths	6
Open cockpit	yes
Saloon	New fabrics and foam for cushions 2023
Heating	Via air condition
Air-conditioning	800 watt, 10.000 Btu Plus two Caframo air Fans for cabins
Chart table	yes
Dinette	yes
Opening door to cockpit	yes
Galley	yes
Countertop	yes
Sink	yes
Cooker	2 burners Gas, ENO
Oven	yes
Fridge	180 Lt, Top loader
Hot water system	yes
Water pressure system	yes
Kettle	yes
Coffee maker	Nespresso machine plus Milk frother plus kettle 1000 watt
Crockery	yes
Owners cabin	double bed Flexima mattresses with soft topper
Wardrobe	yes
Bathroom	separate
Toilet	separate
Wash basin	in the bathroom
Shower	separate
Guest cabin 1	double bed Flexima mattresses with soft topper
Wardrobe	yes
Bathroom	separate
Toilet	separate



BENETEAU OCEANIS 40

Wash basin	in the bathroom
Shower	separate
Washing machine	Candy, Aqua 1142 Di, 4 Kg
Extra info	Triangle screen for the front of the yacht

MACHINERY

No of engines	1
Make	YANMAR
Type	3JH4E
HP	40
kW	29.44
Fuel	diesel
Year installed	2007
Drive	shaft
Bowthruster	None
Propeller type	Maxprop
Generator	Portable 2,2 Kw
Batteries	Jarocells Lithium
Start battery	yes
Service battery	2x 100 Ah
Battery charger	yes
Inverter	2 Kw
Battery charger/inverter	Solar Cell Inverter: VICTRON MPPT 100/30
Solar panel	2x 200 W
Shorepower	Charger shore power: 25Amp, 2023

NAVIGATION

Compass	X 2 Plastimo
Depth sounder/log	RAYMARINE ST 60
Log	RAYMARINE ST 60
Windset	RAYMARINE ST 60



VHF	yes
Autopilot	RAYMARINE
Radar	RAYMARINE
Plotter/GPS	RAYMARINE C80
AIS transceiver	650 CLASS B
EPIRB	yes
Navigation lights	LED 2021
Extra info	Mariphone:RAY 240E

EQUIPMENT

Sprayhood	yes
Bimini	yes
Sun awning	yes
Cockpit cushions	yes
Cockpit table	yes
Bathing platform	yes
Boarding ladder	yes
Gangway	yes
Anchor	ULTRA MARINE 21Kg
Anchor chain	80m x 10mm year 2020
Anchor 2	DELTA 21 Kg (PLUS one STERN Anchor 8Kg, 10mx) 8mm chain
Anchor chain	30m x 10mm
Windlass	electrical 1000W, year 2022 with remote control
Dinghy	Hydro Force, 270 cm
Outboard	MARINER 3,5 Hp
Sea railing	yes
Life raft	PLASTIMO
Life raft (pers)	4
Lifejackets	yes
Lifebuoy	yes



Radar reflector	Vibrating Lns on top of the mast
Fenders	yes
Mooring lines	yes
Fire extinguisher	Foam 2 Kg x 2 plus one for engine
Extra info	All lighting: LED Lamps
Extra info	SUN SCREENS: attached to the boom over the entire ship
Extra info	Attached to the Bimini sides cockpit & to the Bimini for rear

RIGGING

Rigging	sloop Extra removable cutter stay
Standing rigging	wire
Material mast	aluminium Height 18,5 m
Mainsail	2022
Battcars	yes
Cutterstay	yes
Genoa	2015
Cutter furler	2015
Spinnaker	Yes fittings, no spinnaker
Stormjib	2015



BENETEAU OCEANIS 40



BENETEAU OCEANIS 40



BENETEAU OCEANIS 40



BENETEAU OCEANIS 40



BENETEAU OCEANIS 40



BENETEAU OCEANIS 40



BENETEAU OCEANIS 40



BENETEAU OCEANIS 40



BENETEAU OCEANIS 40



BENETEAU OCEANIS 40



BENETEAU OCEANIS 40



BENETEAU OCEANIS 40



BENETEAU OCEANIS 40



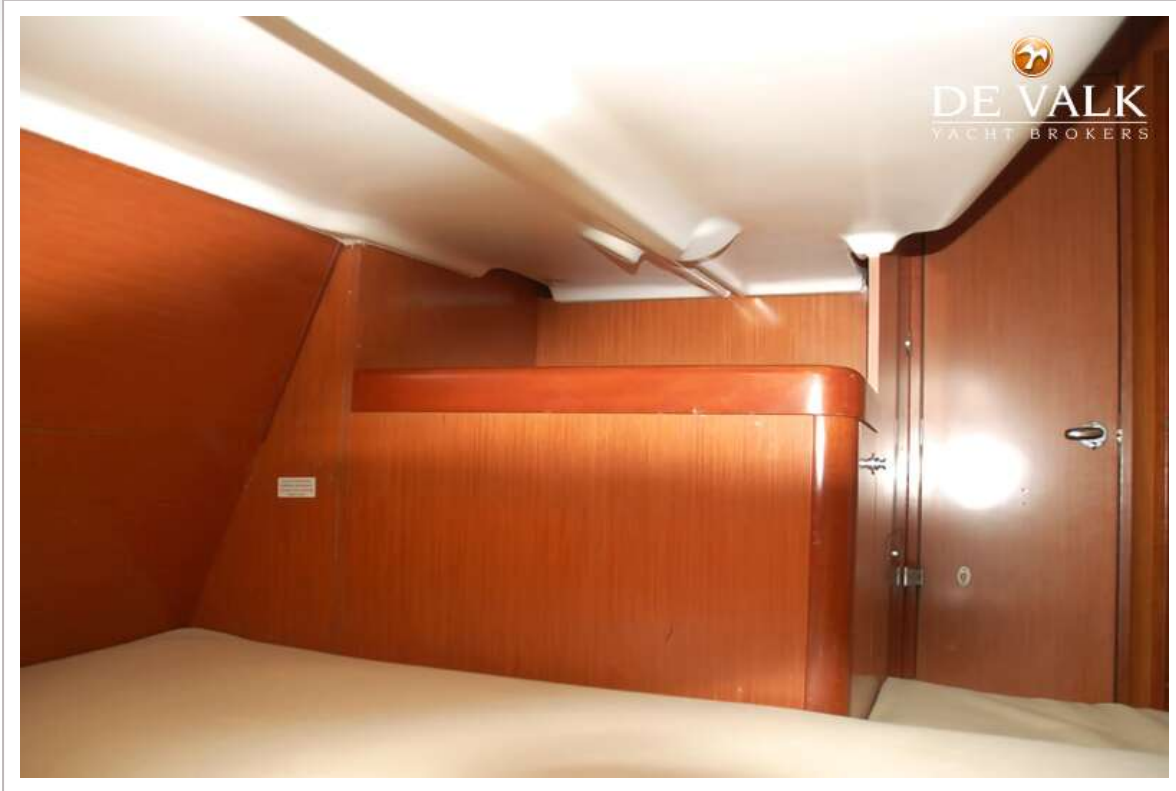
BENETEAU OCEANIS 40



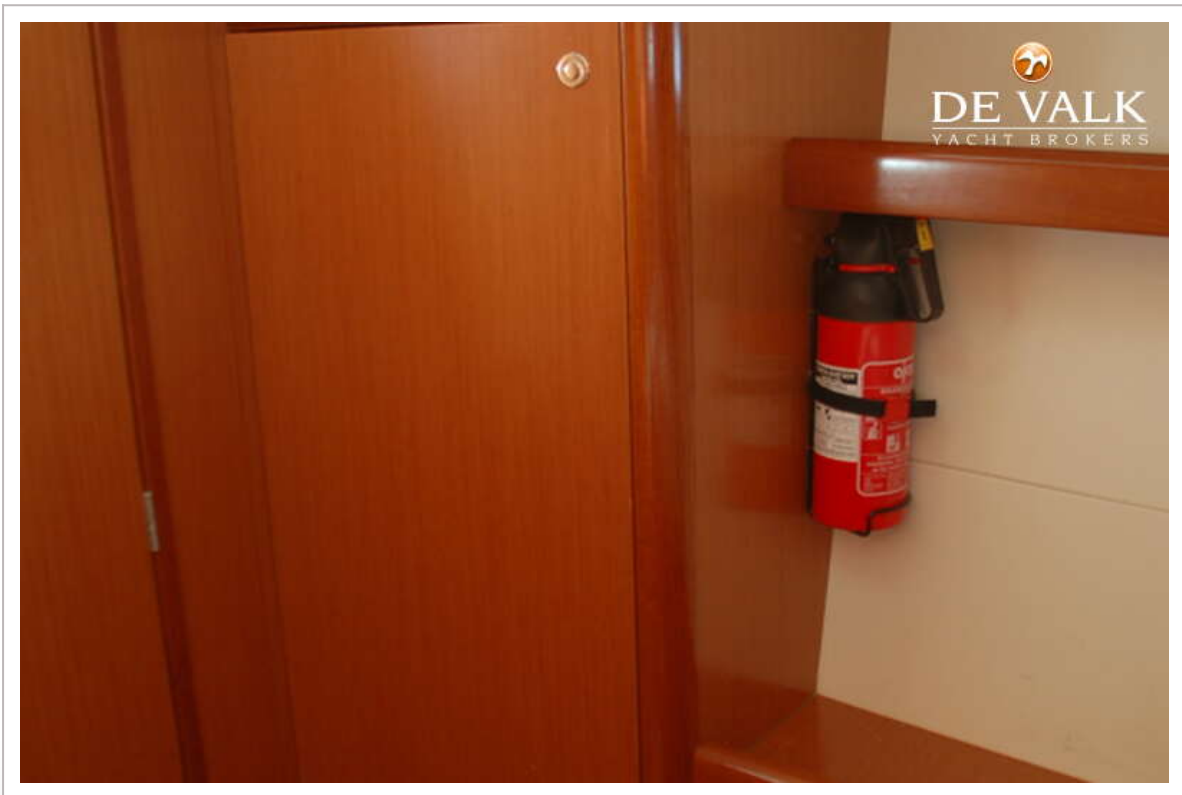
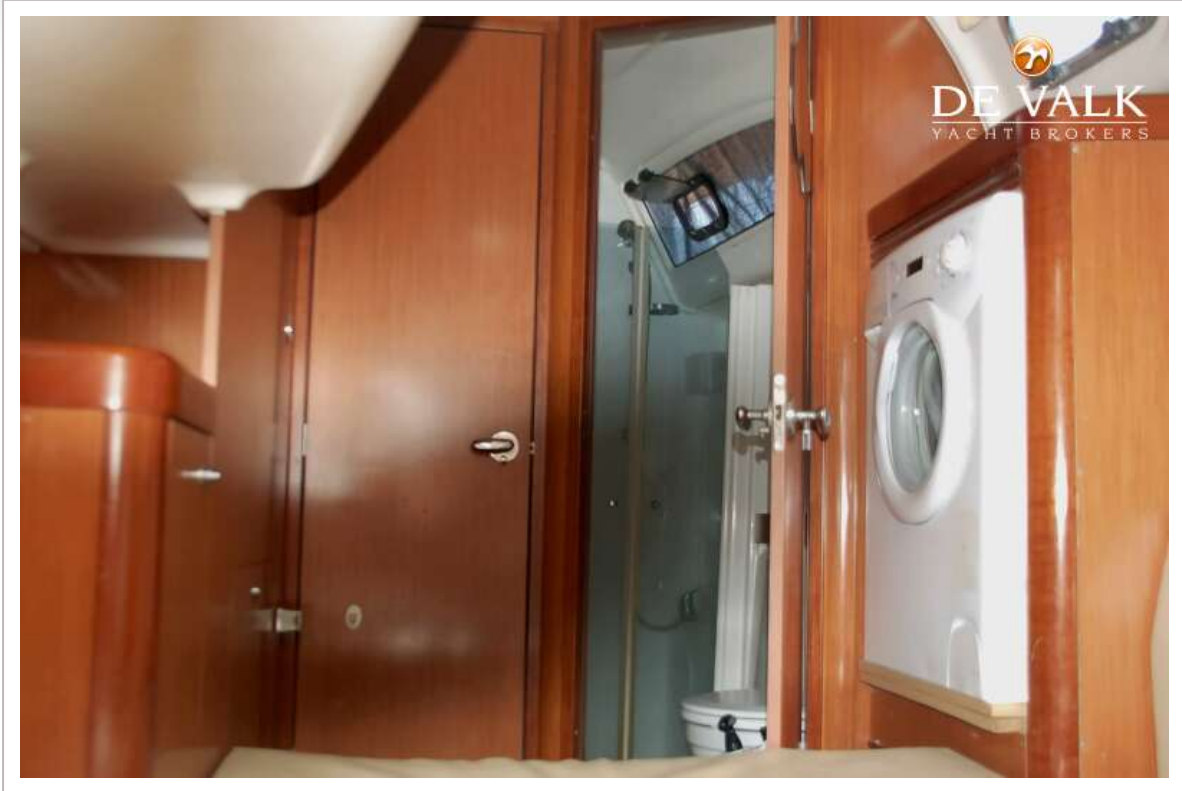
BENETEAU OCEANIS 40



BENETEAU OCEANIS 40



BENETEAU OCEANIS 40



BENETEAU OCEANIS 40



BENETEAU OCEANIS 40



BENETEAU OCEANIS 40



