



## JOHNSON 56



## BROKER'S COMMENTS

Owner remodelled the entire yacht from top to bottom. This yacht is in like new condition. Owner is selling to purchase a larger vessel All new electrical system. New electronics and audio, new carpet throughout, new wine cooler and appliances.

*Mark Damen*

## SPECIFICATIONS

<b>Dimensions</b>	17.02 x 4.80 x 1.30 (m)	<b>Builder</b>	Johnson
<b>Built</b>	1999	<b>Cabins</b>	3
<b>Material</b>	GRP	<b>Berths</b>	6
<b>Engine(s)</b>	2 x MAN D2840 LE401 diesel	<b>Hp/Kw</b>	2 x 600.00 (hp), 441.60 (kw)
<b>Asking price</b>	€ 275.000 (VAT Paid)	<b>Lying</b>	at sales office

## CONTACT

<b>Sales office</b>	De Valk Costa del Sol	<b>Telephone</b>	+34 951120059
<b>Address</b>	Southern Spain Region 29660 Malaga ES	<b>E-mail</b>	costadelsol@devalk.nl

## DISCLAIMER

These particulars are given in good faith as supplied but cannot be guaranteed.



## GENERAL

Model	JOHNSON 56
Type	motor yacht
LOA (m)	17,02
Beam (m)	4,80
Draft (m)	1,30
Year built	1999
Builder	Johnson
Country	Taiwan
Designer	Dixon
Hull material	GRP
Flybridge cockpit cover	yes
Flybridge suncover	yes
Radar arch	non collapsible
Fuel tank (litre)	2271.1
Fuel daytank (litre)	378.1
Freshwater tank (litre)	757.1
Wheel steering	yes
Inside helm position	yes
Outside helm position	yes
Flybridge helm position	yes

## ACCOMMODATION

Cabins	3
Berths	6
Aft deck	yes
Deck saloon	yes
Air-conditioning	reverse cycle airco Every cabin & Saloon
Navigation center	yes
Aft Cabin	yes
Dinette	yes



Opening door to aft deck	yes
Galley	yes
Countertop	yes
Sink	yes
Cooker	yes
Oven	yes
Microwave	All new Appliances
Fridge	yes
Freezer	yes
Wine cooler	yes
Hot water system	yes
Water pressure system	yes
Dishwasher	yes
Owners cabin	double bed
Wardrobe	yes
Bathroom	yes
Toilet system	electric New Silent Flow
Wash basin	yes
Shower	yes
Guest cabin 1	double bed
Wardrobe	yes
Toilet system	electric New Silent Flow
Wash basin	yes
Shower	yes
Guest cabin 2	twin single
Bathroom	yes
Toilet system	New Silent Flow
Wash basin	yes
Shower	yes
Flybridge	yes



## MACHINERY

No of engines	2
Make	MAN
Type	D2840 LE401
HP	600
kW	441.60
Fuel	diesel
Year installed	1999
Year of overhaul	2024
Maximum speed (kn)	29
Cruising speed (kn)	22
Engine hours	900
Bowthruster	yes
Manual bilge pump	One manual
Electric bilge pump	Five 5 electric Bilge pumps
Generator	Whisper Power Piccolo 8kva
Battery charger/inverter	Victron Energy 3000w Inverter
Shorepower	Victron Energy Cerbo Power management System/online monitoring
Trimtabs	yes

## NAVIGATION

Compass	Ritchie
Compass on flybridge	Ritchie
Multi control display	yes
Depth sounder	yes
VHF	Simrad VHF/AIS RS100
Autopilot	Simard NAC-3 2x AP44 Displays
Radar	Simrad Halo 24 Radar
GPS	yes
Plotter/GPS	2x Simrad NSS 1cwvo3s GPS Plotters



Weather receiver	Airmar 120WX Weatherstation
PC connection	yes
Wifi antenna	yes
AIS receiver	yes
EPIRB	EPRIBB1 Ocean Signal
Camera	Sionyx Nightvision Camera
Navigation lights	yes
Searchlight	yes
Extra info	Starlink Internet Isoterm Electrical Boilier
Extra info	All electronics integrated to NMEA2000 Network 2x Simard Instrument Displays

## EQUIPMENT

Fixed windscreen	yes
Bimini	yes
Window cover	New 2024
Cockpit cushions	yes
Cockpit table	yes
Cockpit chairs	yes
Bathing platform	yes
Boarding ladder	yes
Gangway	Remote
Anchor	Delta Lewmar
Anchor chain	All new 70m stainless
Windlass	electrical
Dinghy	rigid inflatable Hitchfield 310
Outboard	yes
Grab rail (superstructure)	yes
Pulpit	yes
Life raft	New Plastimo Coastal with EPRIB
Life raft (pers)	8



Last life raft survey	2024
Lifejackets	Eight
Wiper	yes
Horn	yes
Radar reflector	yes
Fenders	yes
Mooring lines	yes
Spare parts	yes
Tools	yes
TV	2X LED TV's 1x new TV Saloon w Lift
Radio	Fusion Audio System 10 speakers 3 zones
Cockpit speakers	yes
Speakers in salon	yes
Speakers in cabin	yes
Fire extinguisher	6 manual handheld
Extra info	Underwater Lighting









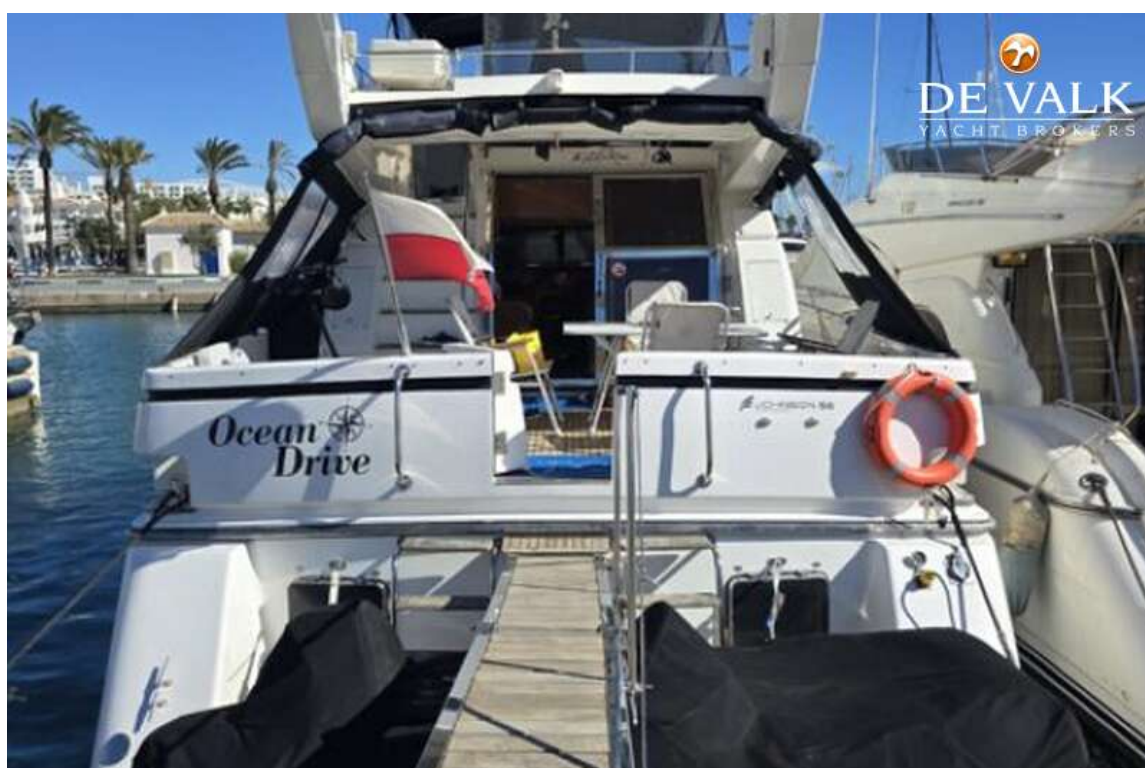


# JOHNSON 56





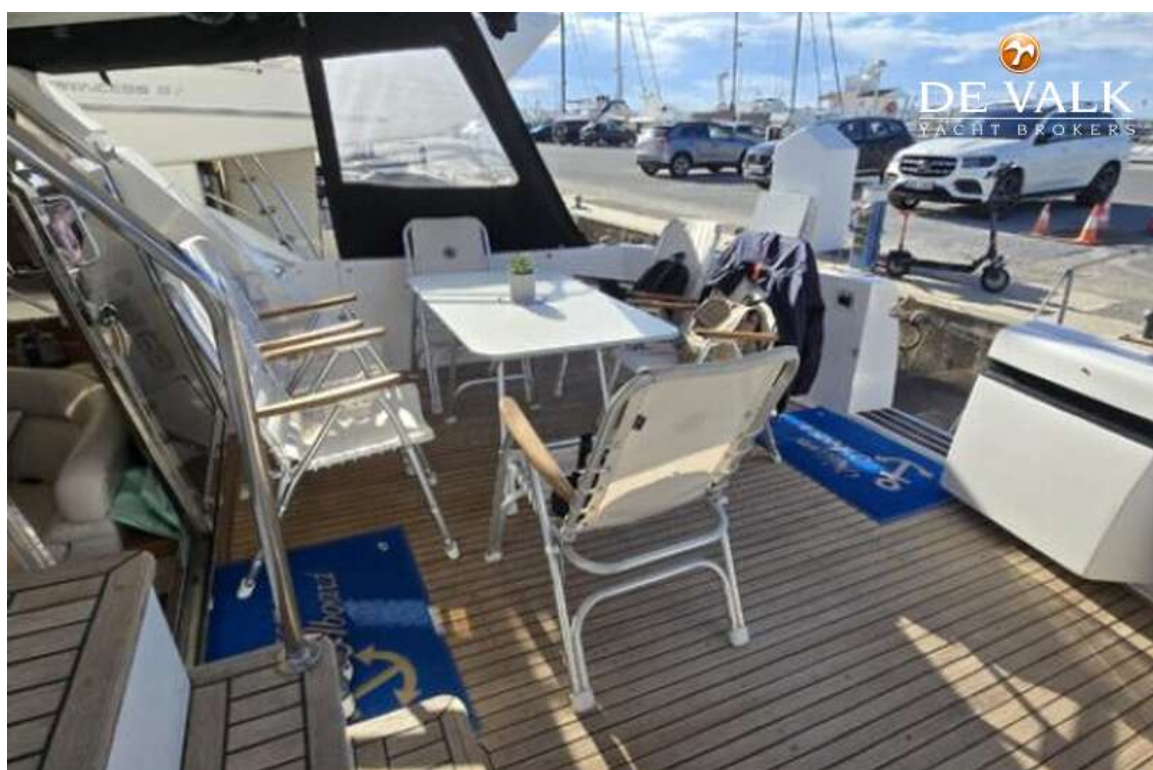
# JOHNSON 56



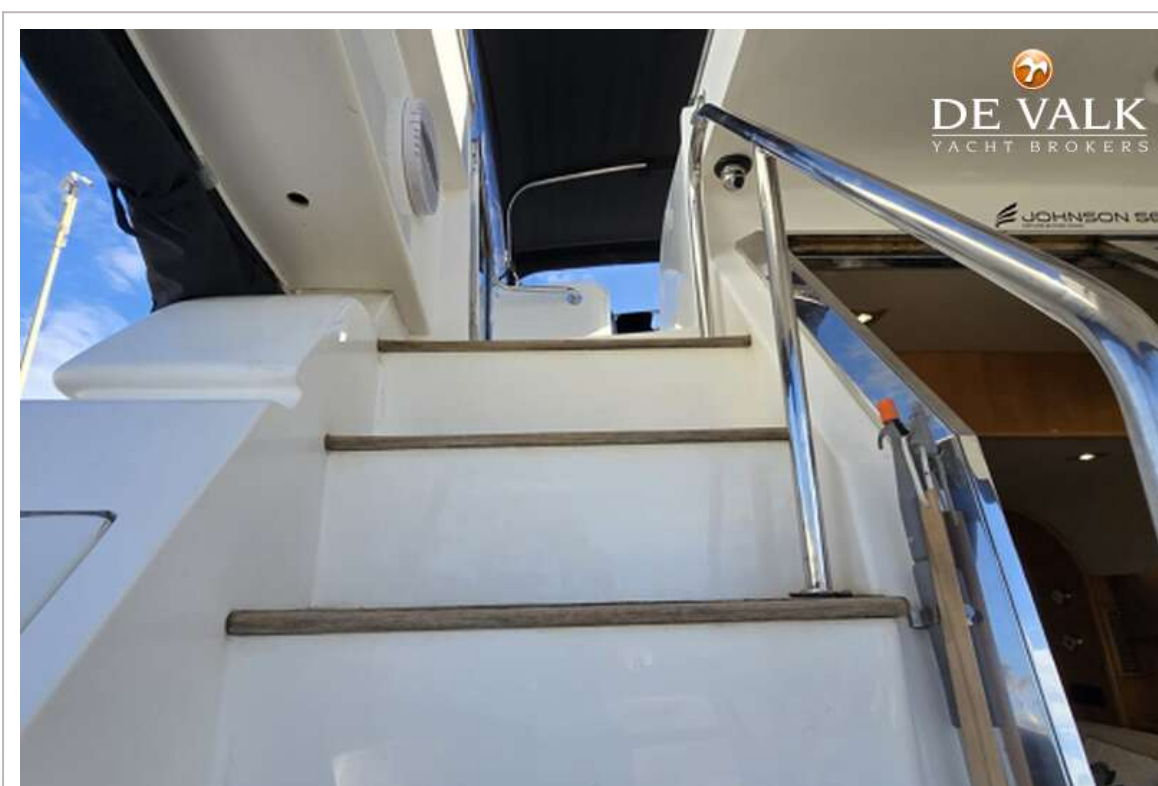
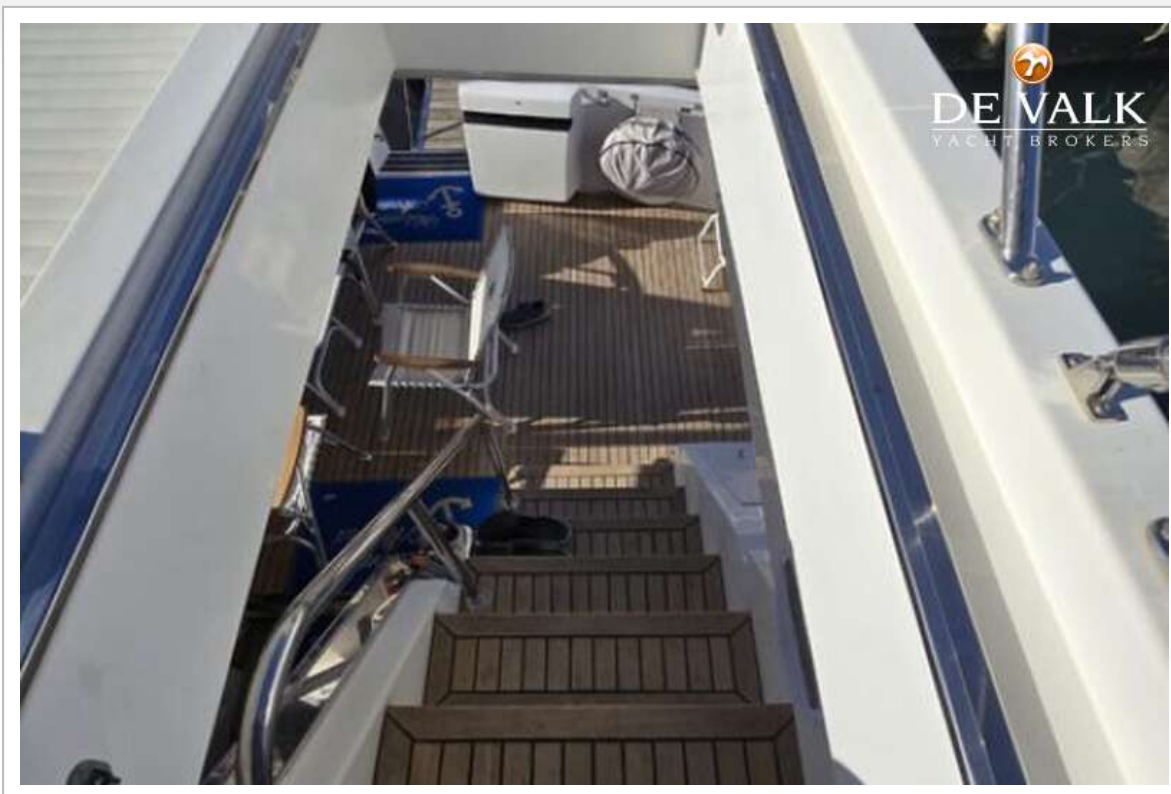
## JOHNSON 56







# JOHNSON 56





## JOHNSON 56

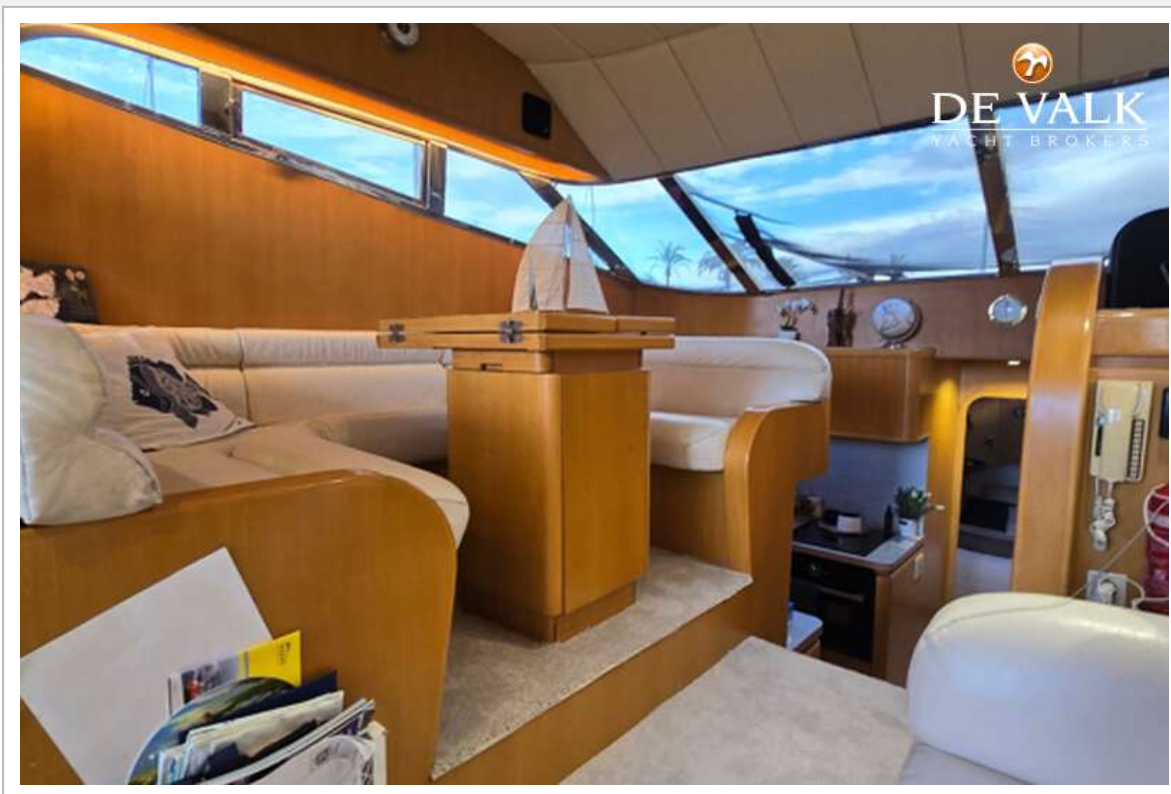




# JOHNSON 56

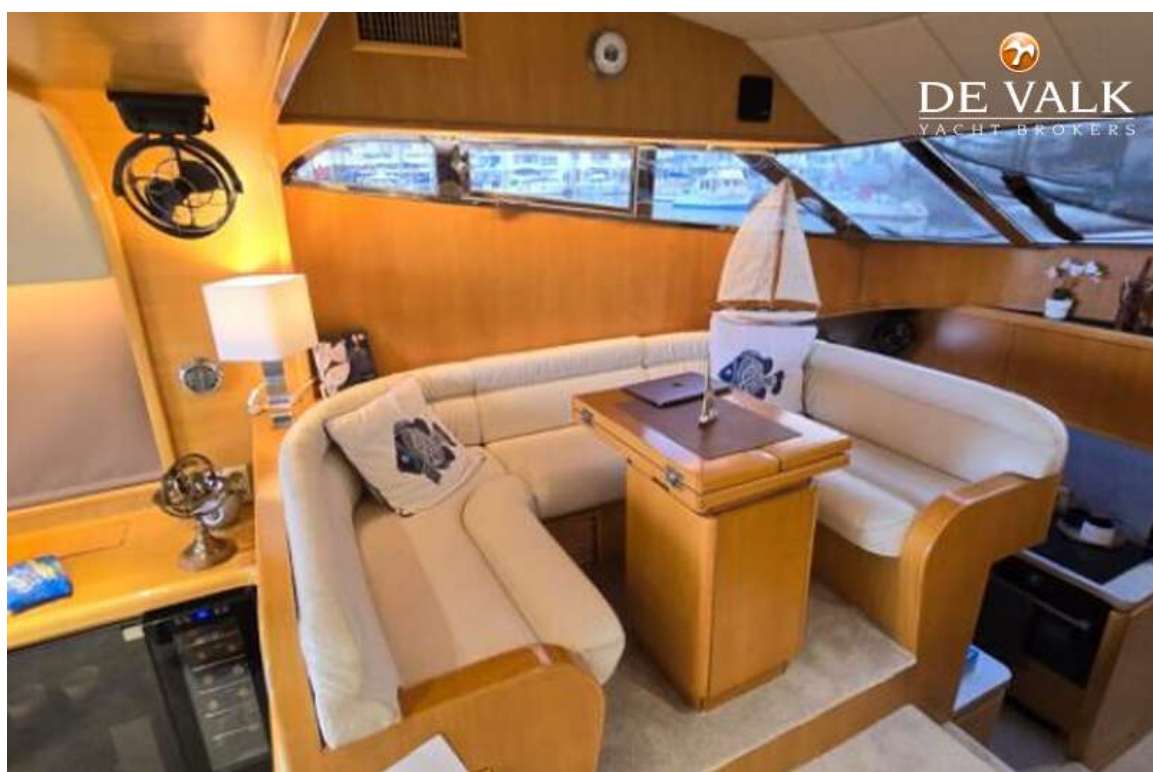


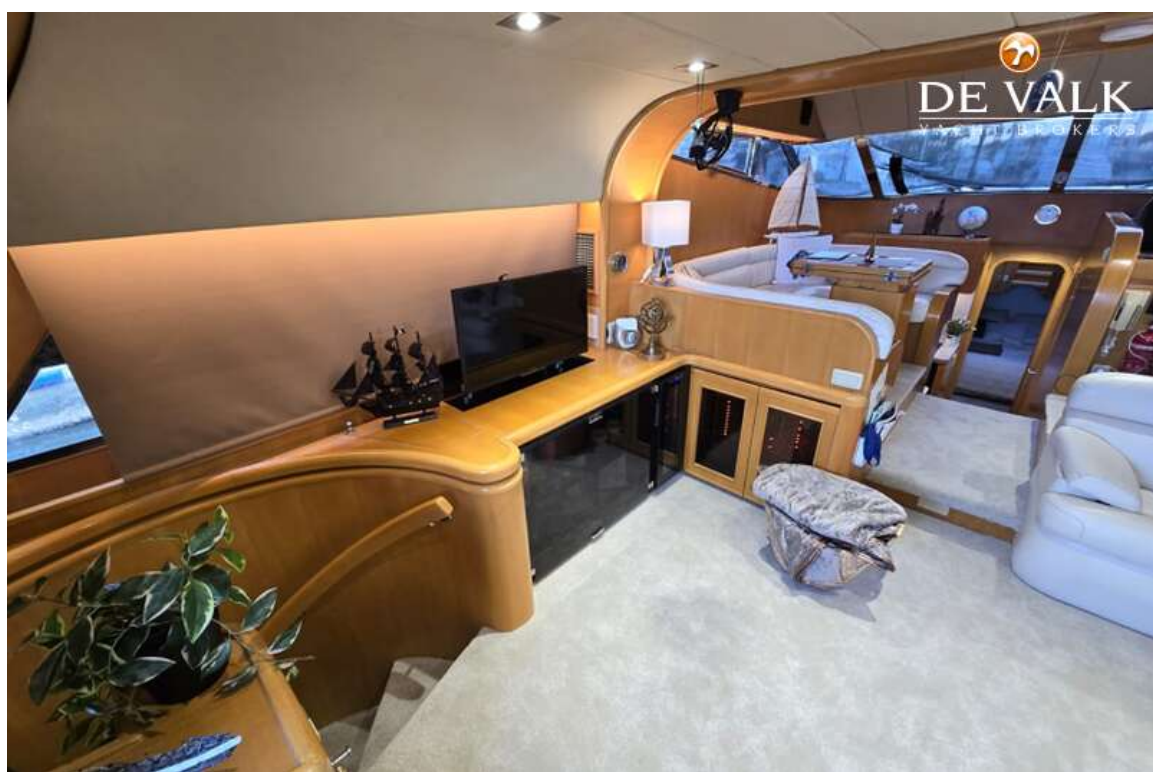
# JOHNSON 56





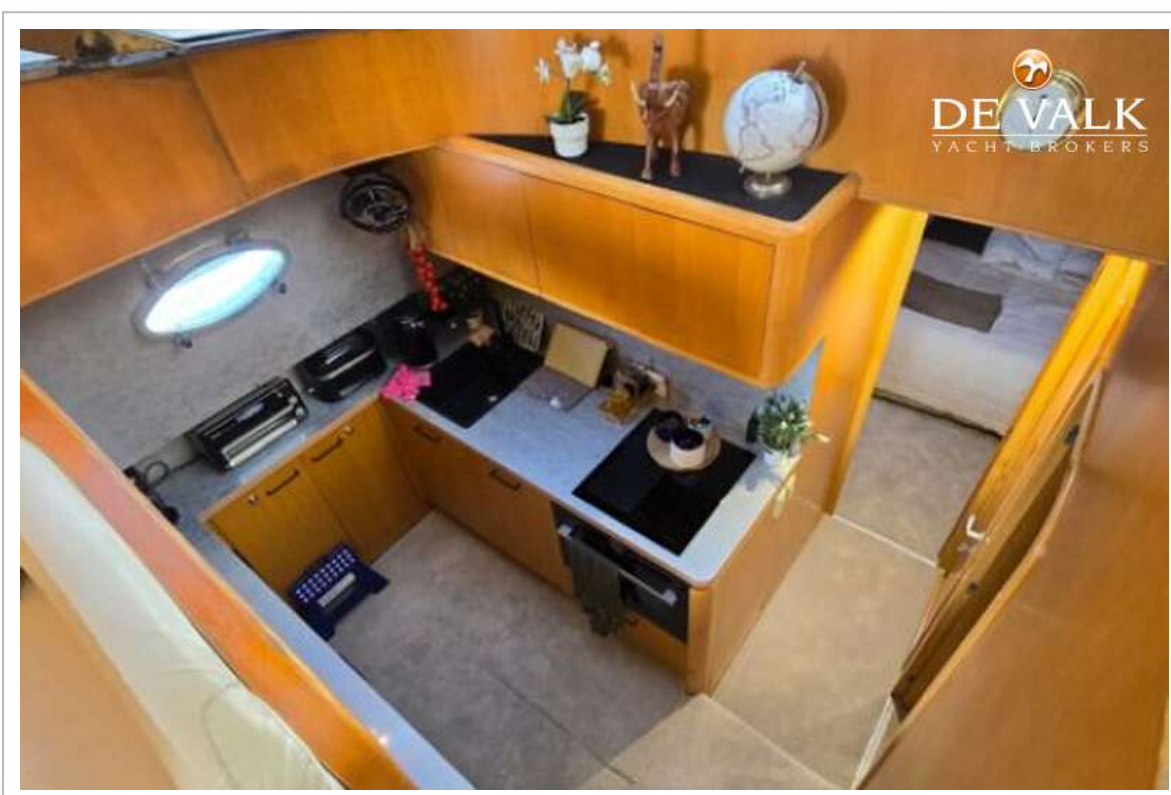
# JOHNSON 56







# JOHNSON 56

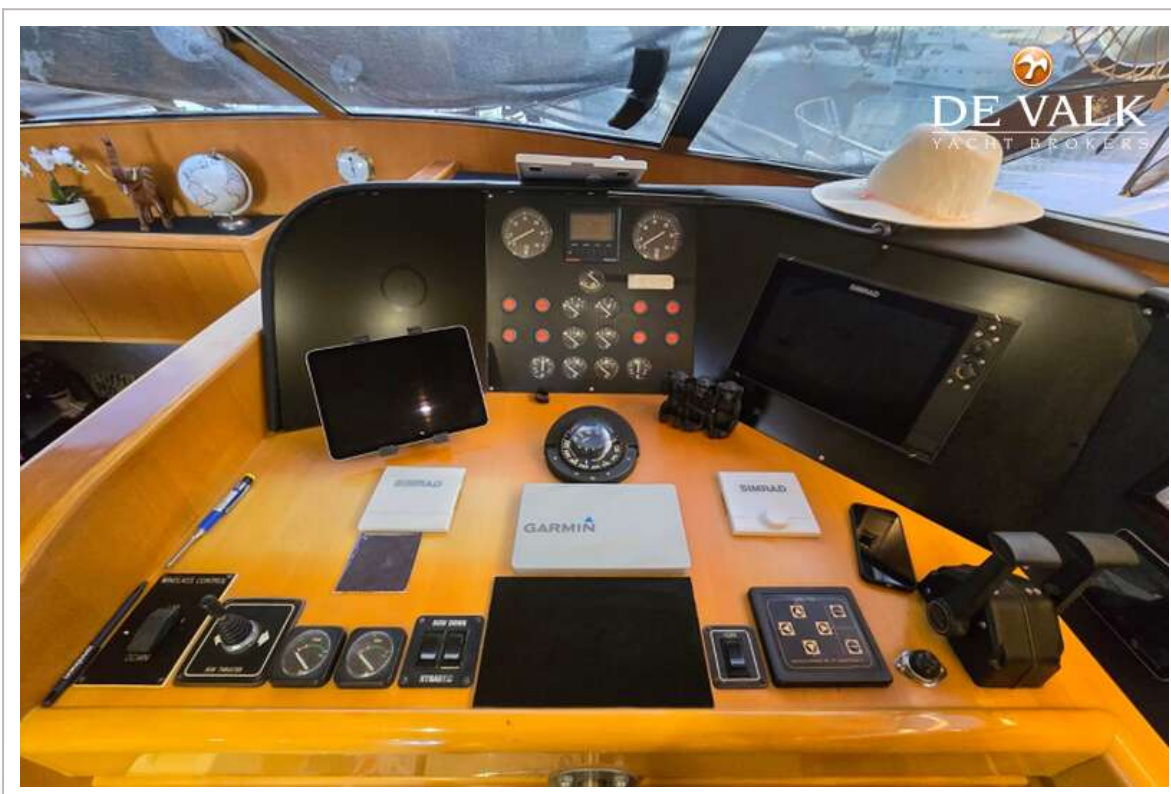


# JOHNSON 56





# JOHNSON 56



# JOHNSON 56





# JOHNSON 56



