



HATTERAS 53

HATTERAS 53

BROKER'S COMMENTS

The Hatteras 53' is the most successful mid-sized motor yacht ever built. Renowned for its excellent craftsmanship, spacious layout and seaworthiness. "Fleur" is in excellent condition, thanks to the owner's meticulous care and numerous upgrades. In 2009 the engines were completely overhauled and again fully serviced in 2015, a completely new galley was fitted and a beautiful wood ceiling incorporating dimmable lights above the aft deck. New headlining with wood stringers in the saloon etc. A must see Motoryacht to be appreciated!

Reinoud Bicker Caarten

SPECIFICATIONS

Dimensions	17.70 x 4.80 x 1.40 (m)	Builder	Hatteras new Bern
Built	1980	Cabins	3
Material	GRP	Berths	6
Engine(s)	2 x Detroit 8V71TI diesel	Hp/Kw	2 x 435.00 (hp), 320.16 (kw)
Asking price	€ 145.000 (VAT Exempt)	Lying	at sales office

CONTACT

Sales office	De Valk Portugal	Telephone	+351 308 812321
Address	Edifício Administrativo - Ponta da Areia 8500 - 345 Portimão PT	E-mail	portugal@devalk.nl

DISCLAIMER

These particulars are given in good faith as supplied but cannot be guaranteed.



GENERAL

Model	HATTERAS 53
Type	motor yacht
LOA (m)	17,70
Beam (m)	4,80
Draft (m)	1,40
Air draft (m)	6,80
Headroom (m)	2,00
Year built	1980
Builder	Hatteras new Bern
Country	U.S.A.
Designer	Hatteras
Displacement (t)	27,3
Gross tonnage	50
CE norm	A
Hull material	GRP
Hull colour	off-white Painted 2007
Hull shape	deep-V
Superstructure material	GRP
Rubbing strake	stainless steel
Deck material	GRP
Deck finish	non-skid paint
Superstructure deck finish	non-skid paint
Cockpit deck finish	teak Aft
Antifouling (year)	2024
Dorades	12
Window frame	aluminium
Window material	tempered glass
Portholes	stainless steel
Insulation	glasswool
Flybridge	yes



Flybridge suncover	Bimini, foldable
Radar arch	non collapsible
Fuel tank (litre)	1750L
Fuel tank 2 (litre)	1625L
Level indicator (fuel tank)	yes
Freshwater tank (litre)	1000L
Level indicator (freshwater)	yes
Wheel steering	hydraulic
Inside helm position	yes
Flybridge helm position	hydraulic
More info on hull	Anti fouling 2022

ACCOMMODATION

Cabins	3
Berths	6
Interior	oak
Floor	wood Iroko
Aft deck	yes
Pilot house/deck saloon	yes
Saloon	new headlining 2009
Headroom saloon (m)	2m
Heating	central heating Ketelbink 12kW 2009
Air-conditioning	reverse cycle airco 2009
Navigation center	yes
Aft Cabin	Master cabin
Dinette	renewed 2009
Opening door to cockpit	Double doors
Opening door to aft deck	yes
Galley	completely renewed 2009
Countertop	wood
Sink	stainless steel



Cooker	induction AEG 4 burners
Oven	yes
Extractor	yes
Microwave/oven combi	Siemens 45L
Fridge	with fridge compartment new 2023 Siemens 180L
Freezer	new 2023 Siemens 40L
Hot water system	on central heating
Water pressure system	electrical 24V
Kettle	yes
Hot water tap	yes
Coffee maker	yes
Crockery	yes
Owners cabin	French bed
Bed length (m)	2m x 1,8m
Wardrobe	hanging/drawers/shelves With lighting
Bathroom	en suite
Toilet	en suite
Toilet system	electric
Wash basin	in the bathroom
Shower	en suite
Guest cabin 1	twin single In bow
Bed length (m)	2m
Wardrobe	hanging/drawers/shelves With lighting
Bathroom	en suite
Toilet	en suite
Toilet system	electric
Wash basin	in the bathroom
Shower	en suite
Guest cabin 2	twin single Bunkbeds
Bathroom	en suite
Toilet	en suite
Toilet system	electric



Wash basin	in the bathroom
Shower	en suite
Washing machine/dryer combi	Hisense New 2023
Flybridge	yes
Wet bar	Aft deck

MACHINERY

No of engines	2
Make	Detroit
Type	8V71TI
HP	435
kW	320.16
Fuel	diesel
Year installed	1980
Year of overhaul	complete overhaul 2015 2022 full service
Maximum speed (kn)	16
Cruising speed (kn)	9
Consumption (l/hr)	40
Range (nm)	550
Engine cooling system	seawater
Drive	shaft
Shaft seal	yes
Engine controls	bowden cable
Gearbox	hydraulic
Bowthruster	electric
Exhaust	watercooled
Propeller type	fixed
Propeller blades	stainless steel
Propeller shaft material	stainless steel
Shaft lubrication	water
Electric bilge pump	32v



Bilge alarm	yes
Electrical installation	12/24/32/220V
Generator	1xKohler 17kVA
Running hours generator	332hrs
Generator 2	Fisher Panda 6kVA
Running hours generator 2	1300hrs
Start battery	New 2024
Service battery	4x new 2019
Electric engine battery	new 2024 Gangway 2xAGM 12v/69Ah
Generator battery	New 2022 110Ah
Bowthruster battery	New 2022
Windlass battery	yes
Battery monitor	Mastervolt
Battery charger	12V/24V/32V
Battery charger/inverter	Victron Combi 74A/3500W
Diode battery combiners	yes
Shorepower	with cable
Trimtabs	2x

NAVIGATION

Compass	Ritchie
Depth sounder	Interface twinscope
Depth sounder/log	Raytheon ST60
VHF	Ritchie VHF
VHF handheld	I-com
Autopilot	Cetrek 740
Radar	Furuno 36Nm
GPS	Geonav 11
Plotter	Geonav 11
Navtex	NX300
Personal computer	Tablet with naviotic



Wifi antenna	yes
Electronic chart(s)	Med + Northern Europe
Radio receiver	yes
Transmitter	yes
Navigation lights	yes
Searchlight	yes

EQUIPMENT

Fixed hardtop	Aft deck new 2009
Bimini	Fly bridge
Cockpit cushions	yes
Cockpit table	yes
Cockpit chairs	yes
Bathing platform	yes
Boarding ladder	stainless steel
Gangway	new 2009 Besenzoni
Deck shower	yes
Anchor	CQR Plough
Anchor chain	100M
Anchor 2	yes
Anchor chain	yes
Windlass	hydraulic
Capstan	yes
Deck wash	yes
Dinghy	rigid inflatable Vetus 3,5m
Outboard	Yamaha 8hp 4stroke
Deck crane	electric
Sea railing	stainless steel
Grab rail (superstructure)	wood
Railing side opening gates	yes
Life raft	container



Last life raft survey	2022
Lifejackets	10x
Wiper	yes
Horn	air pressure
Radar reflector	yes
Fenders	10
Mooring lines	yes
Spare parts	Extra 2x 32v bilge pumps 1x 24V Pump, 1x hydraulic pump
Tools	yes
TV	yes
TV receiver	Internet
Radio-cd player	yes
Cockpit speakers	yes
Speakers in salon	yes
Speakers in cabin	yes
Clock - barometer	yes
Fire extinguisher	yes
Extinguisher in engine room	yes
Auto extinguisher system	In engine room



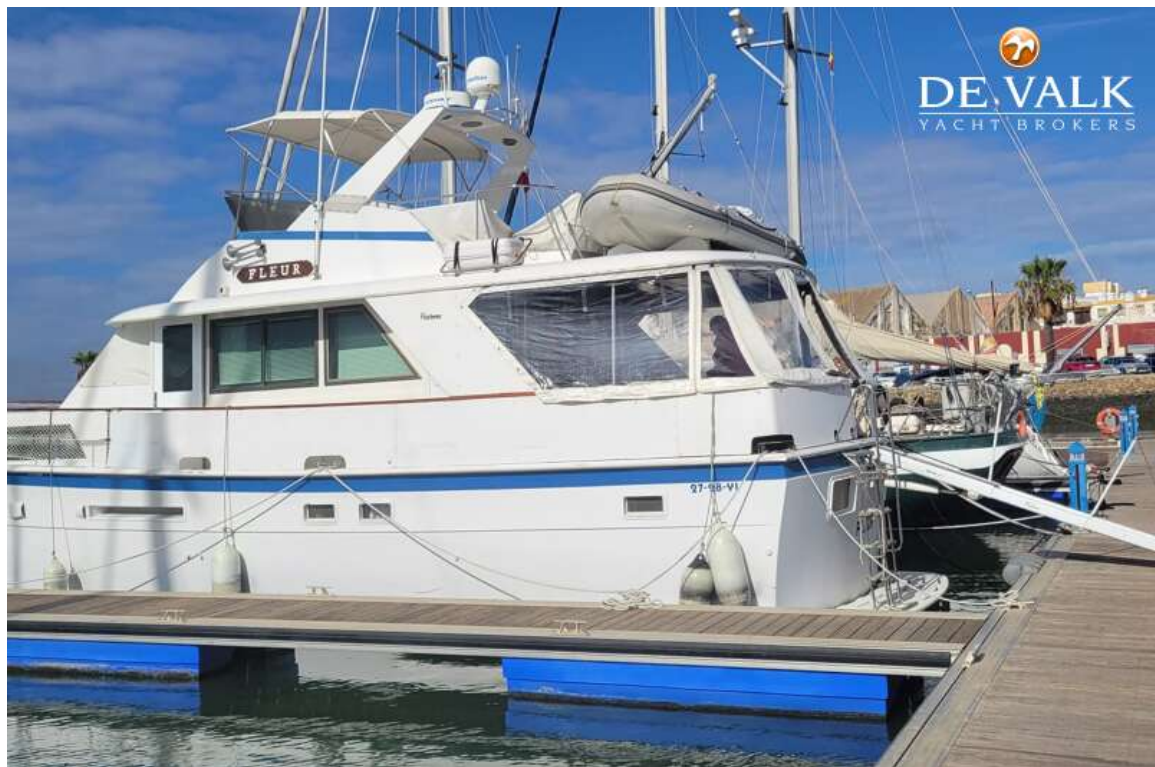
HATTERAS 53

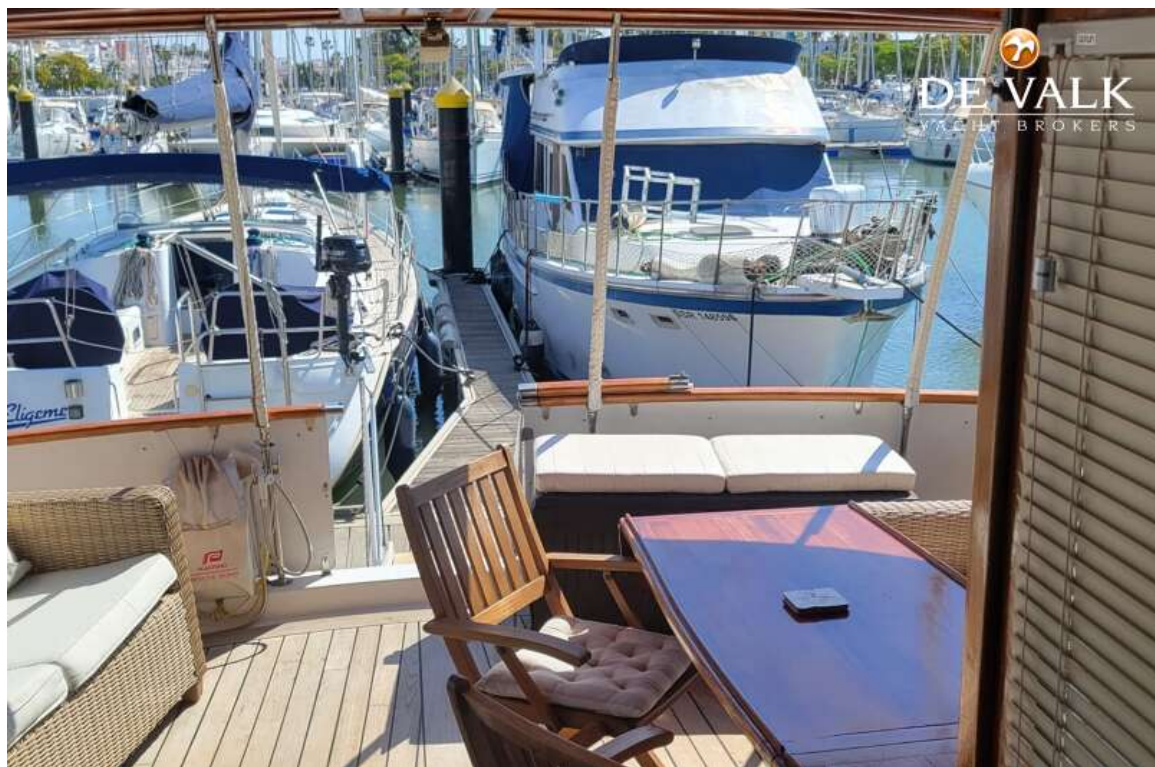
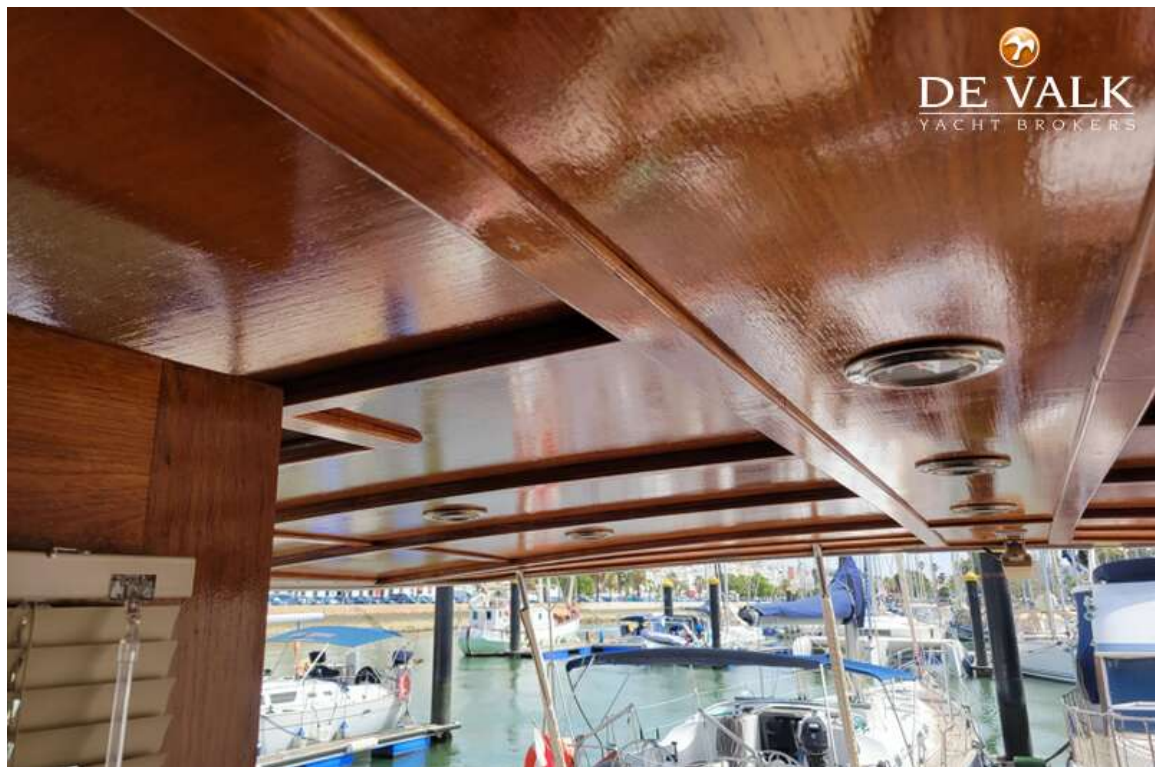


HATTERAS 53



HATTERAS 53





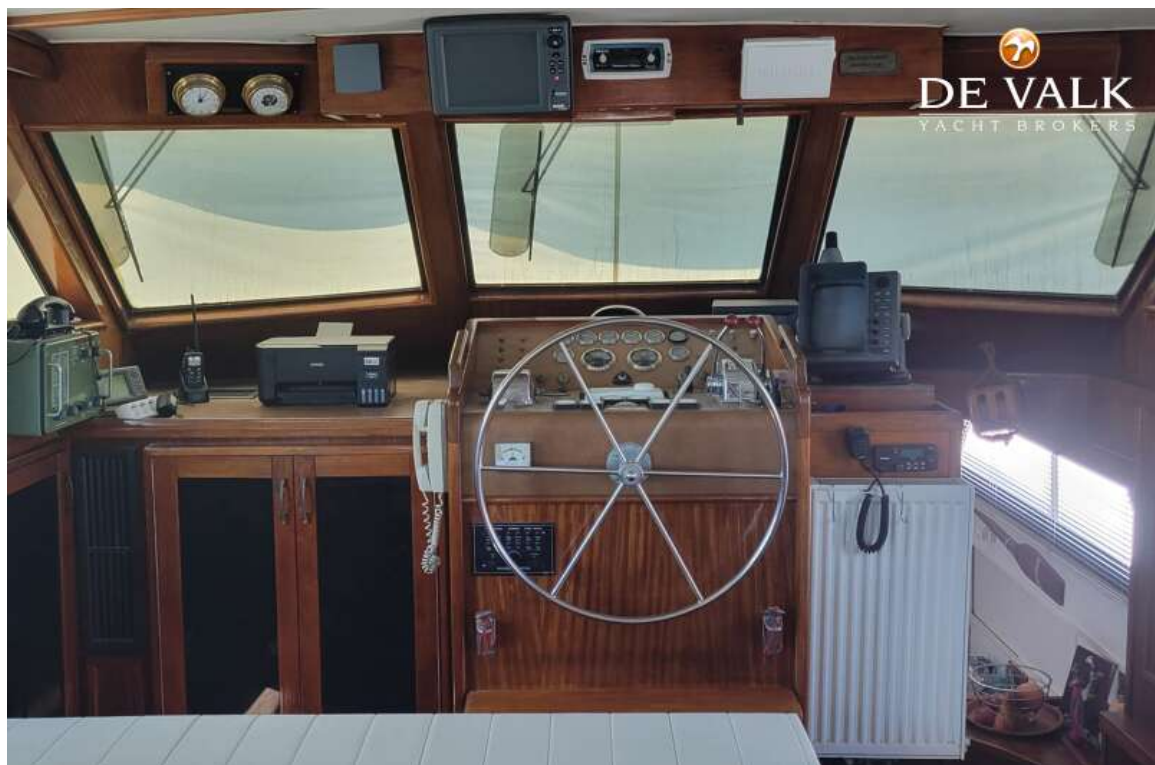
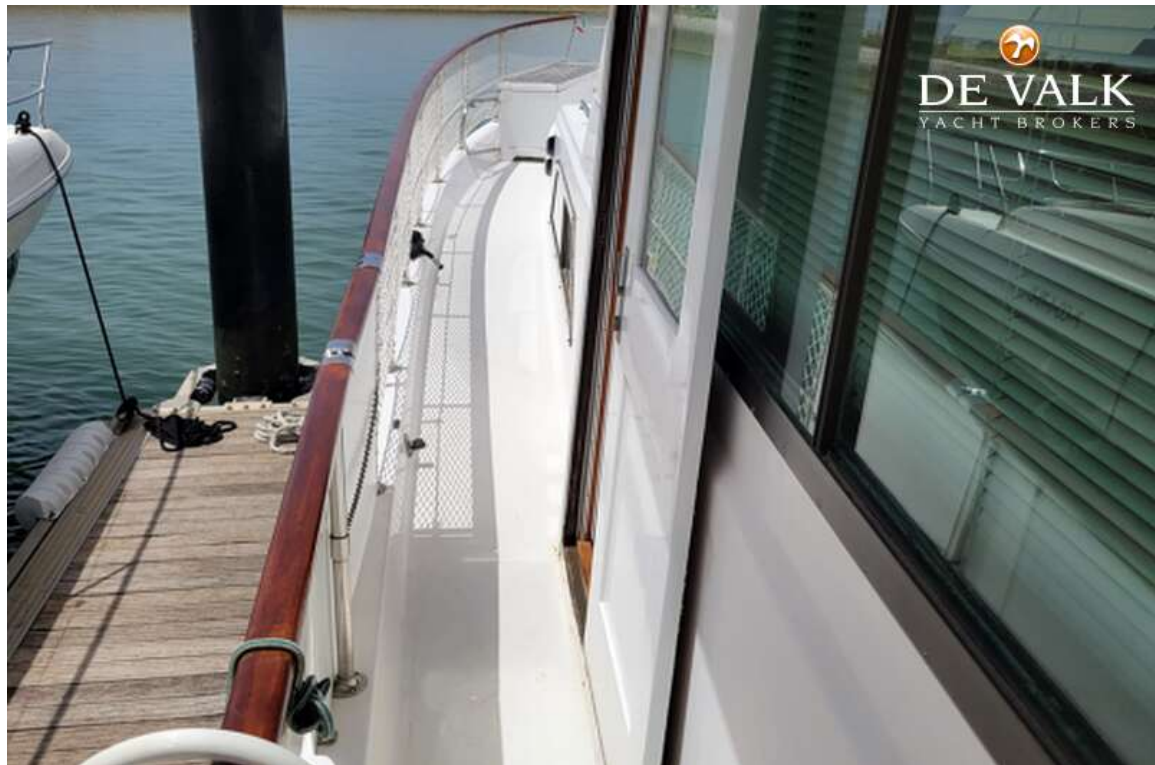
HATTERAS 53



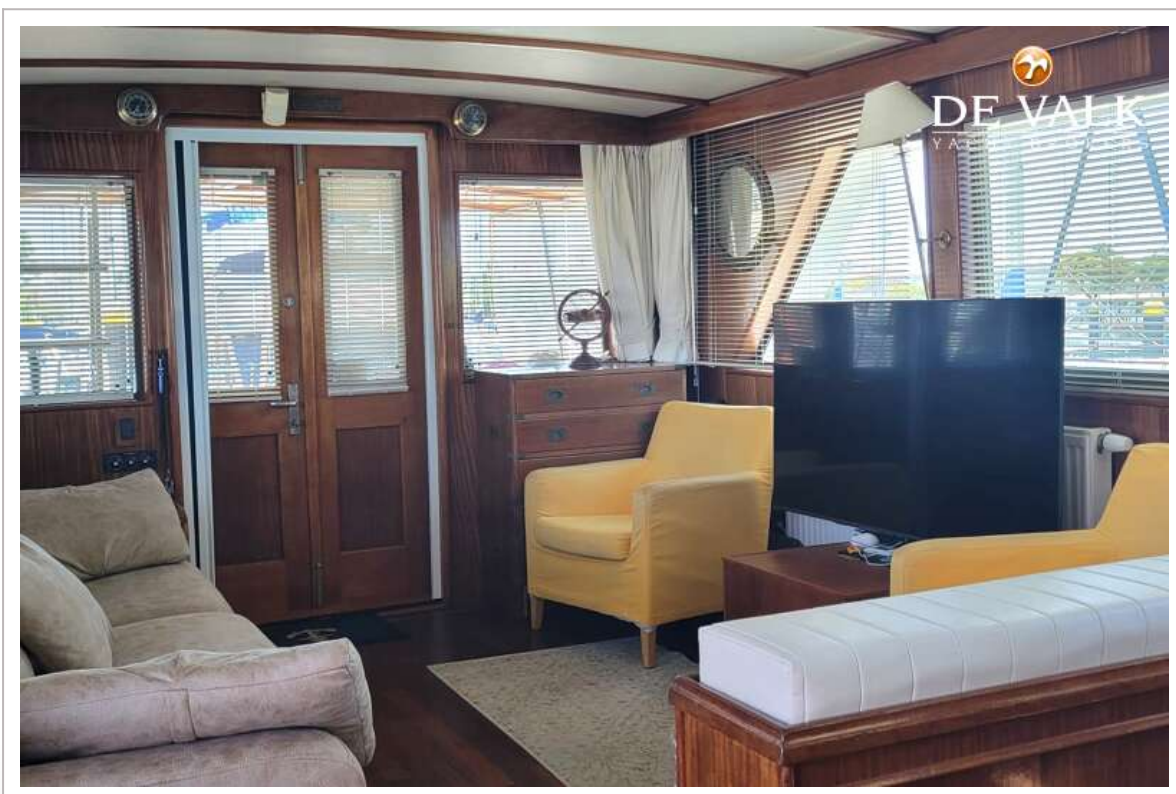
HATTERAS 53



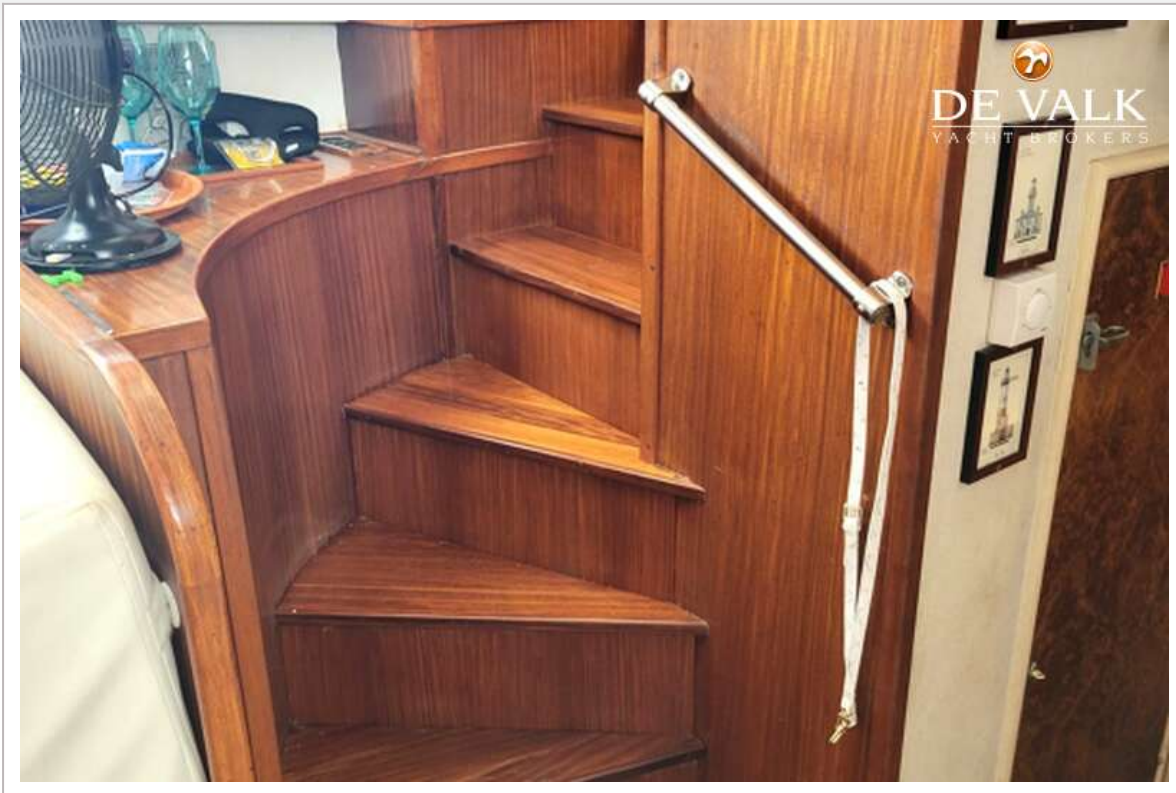
HATTERAS 53



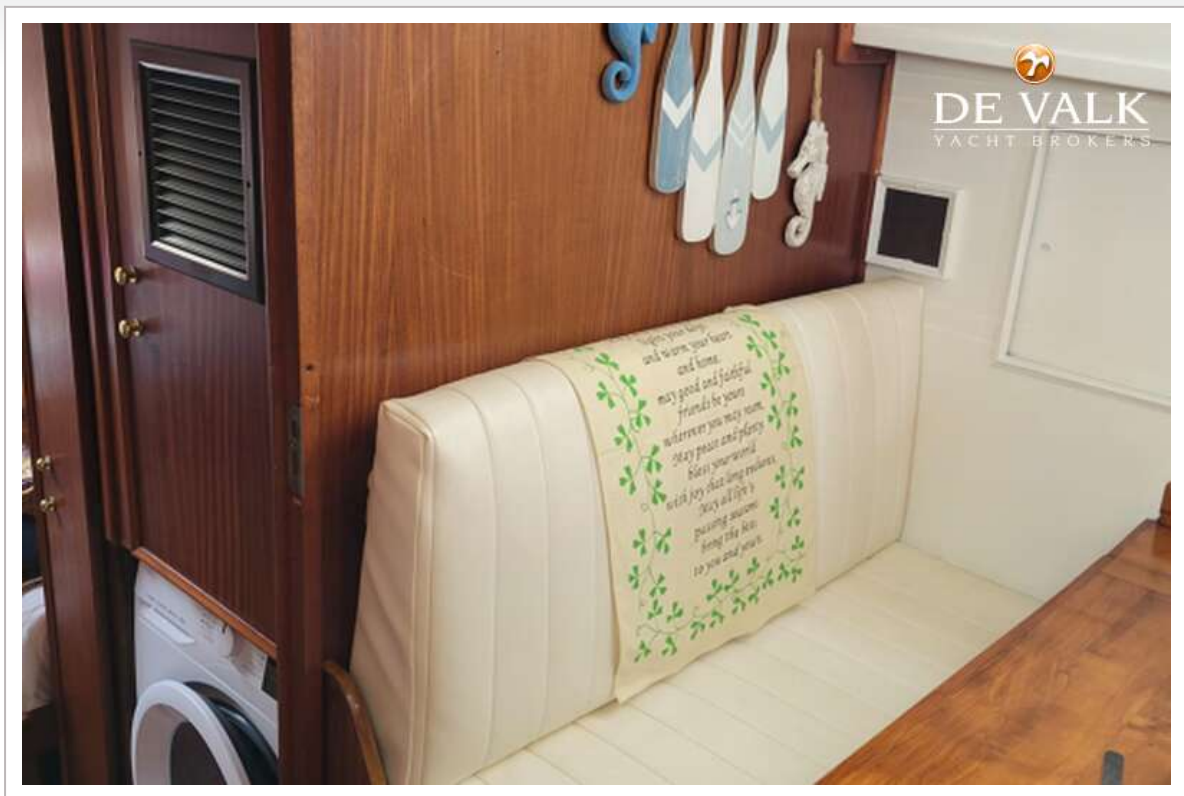
HATTERAS 53



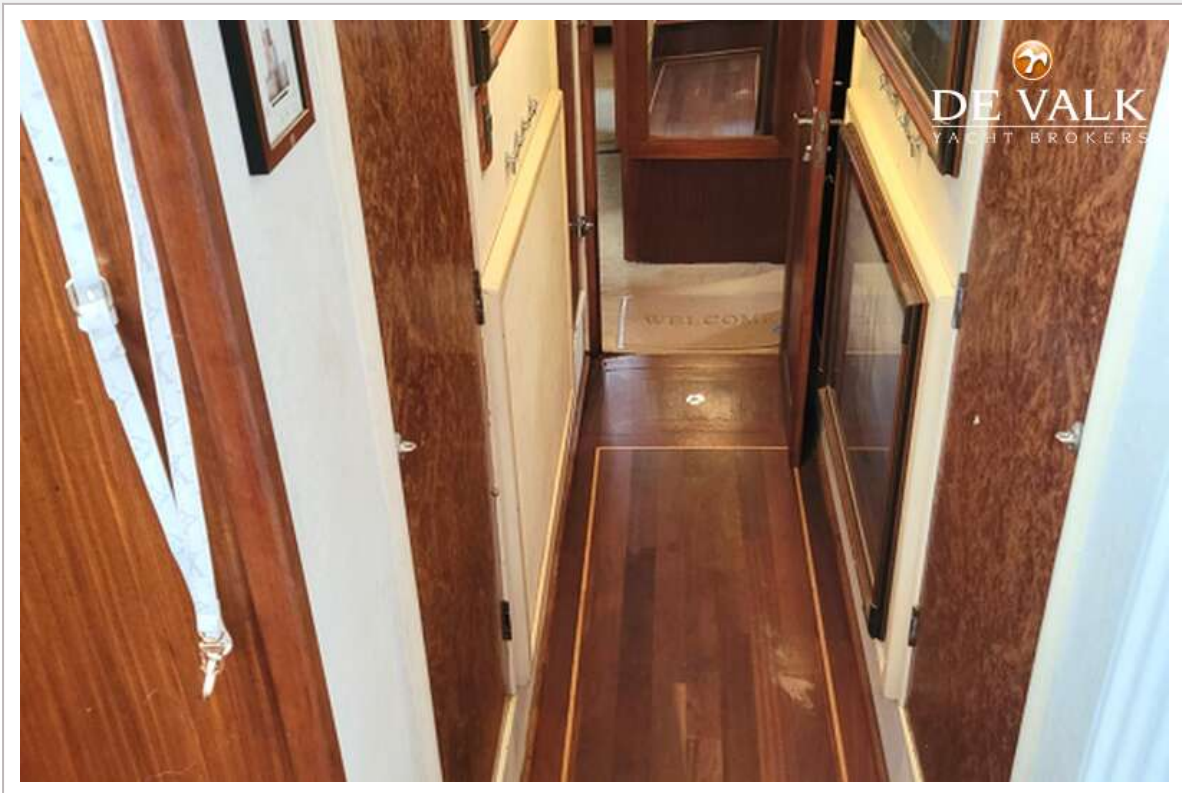
HATTERAS 53

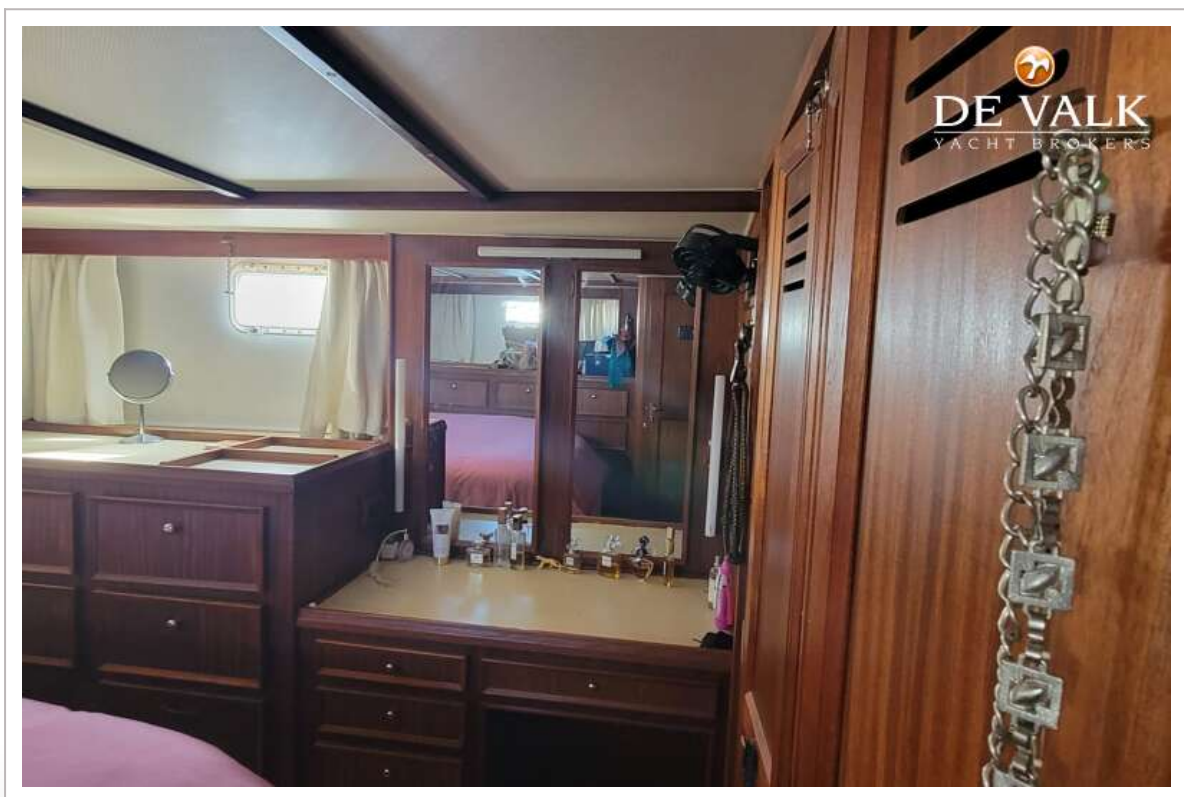
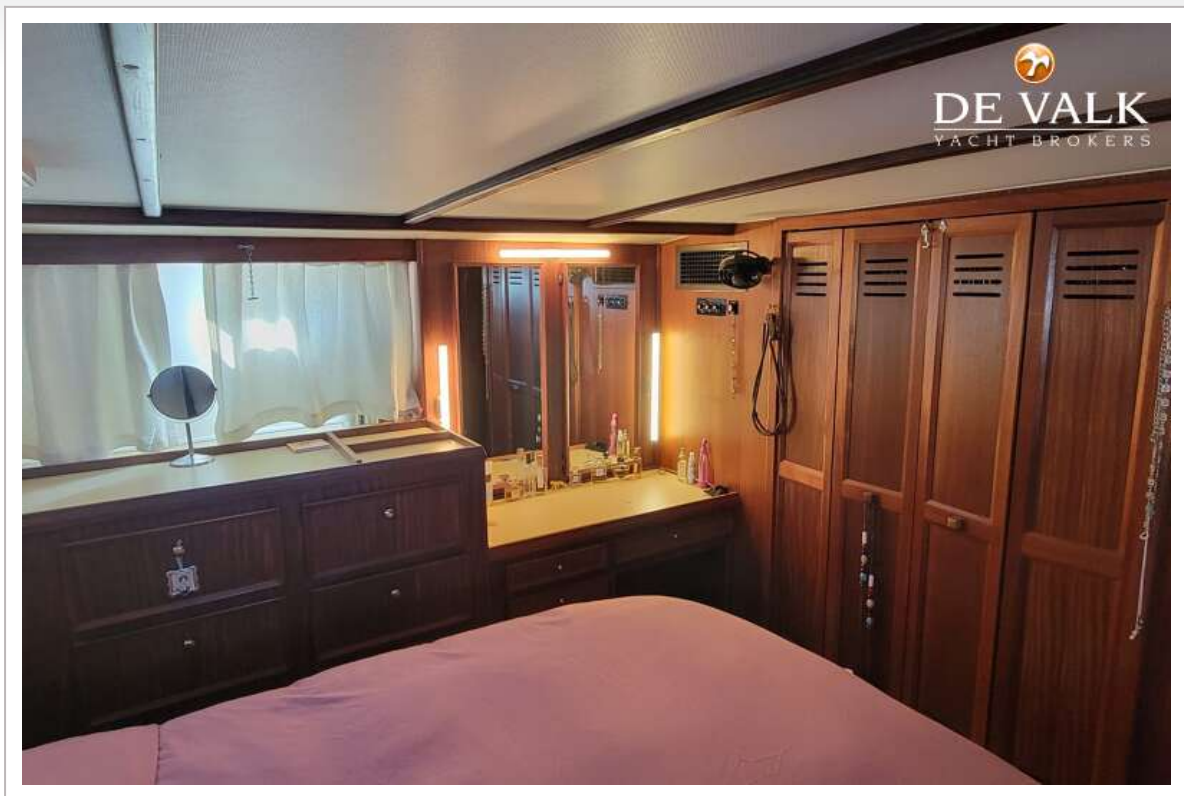


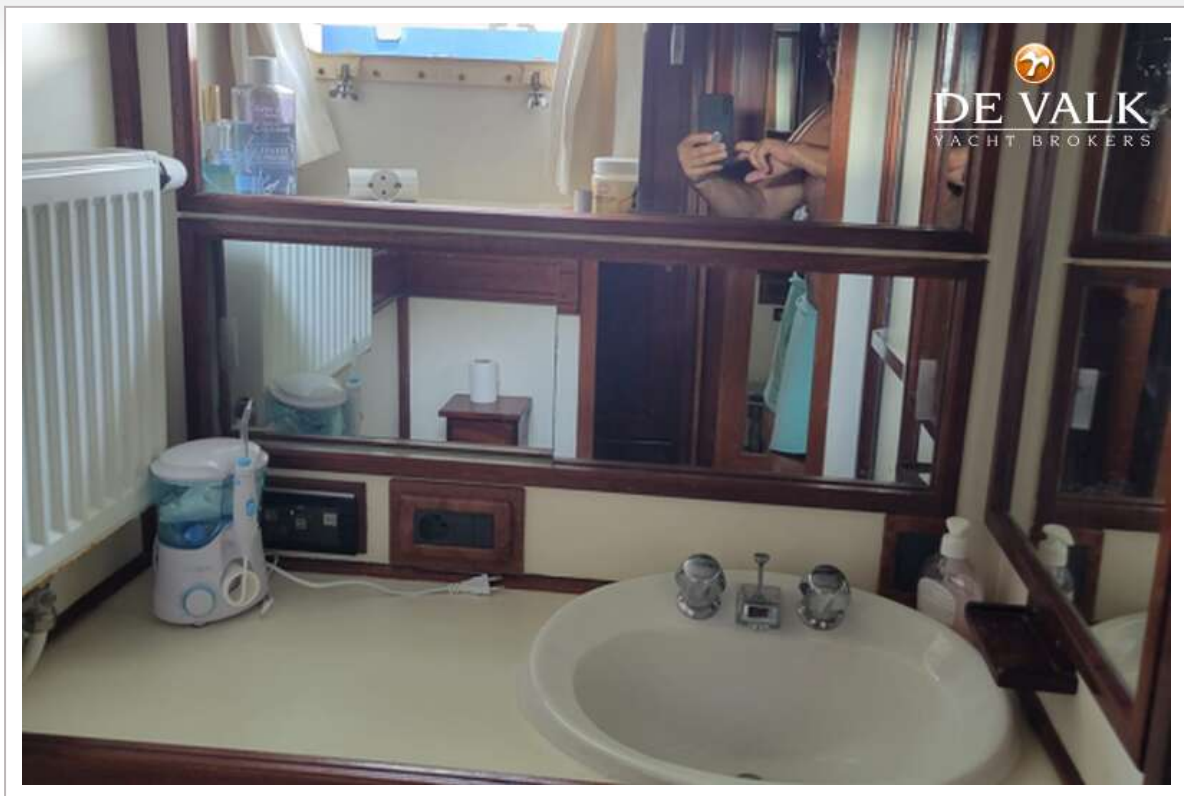
HATTERAS 53



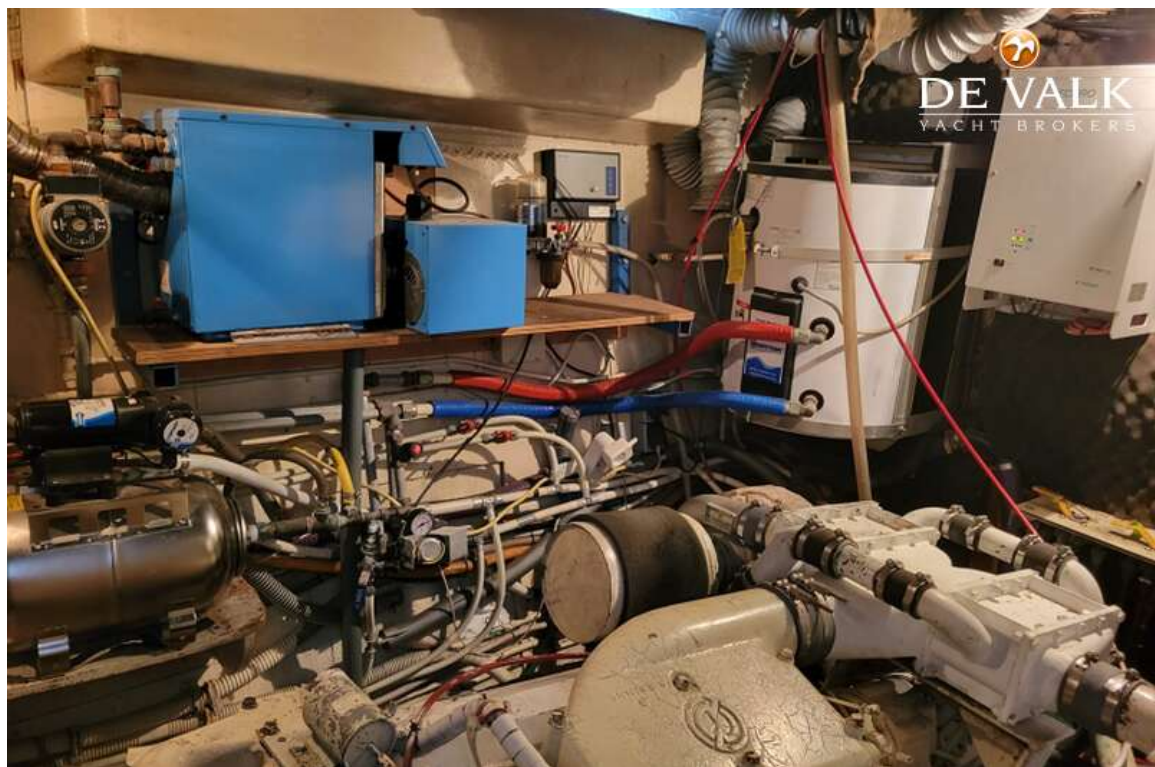
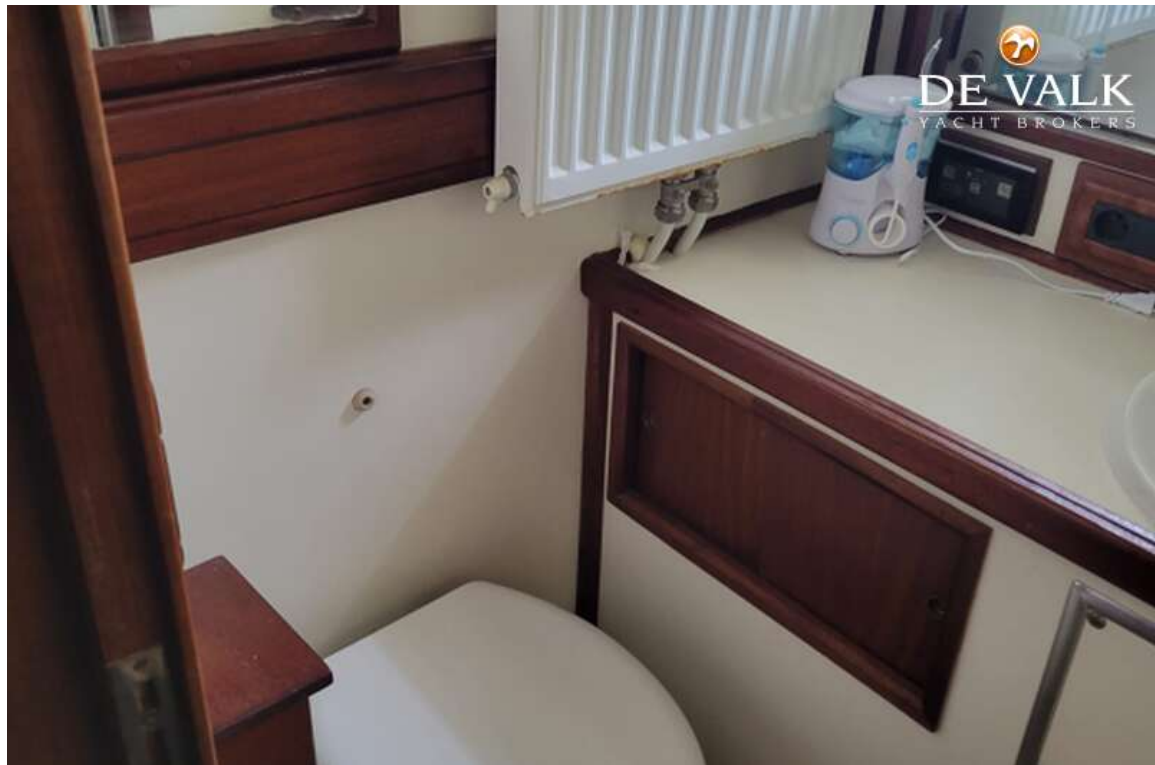
HATTERAS 53







HATTERAS 53



HATTERAS 53

