



DE VALK  
YACHT BROKERS



## VRIPACK TRAWLER 1960



DE VALK  
YACHT BROKERS

# VRIPACK TRAWLER 1960

## BROKER'S COMMENTS

NO RESERVE AUCTION: "Braveheart will be auctioned from € 520.000,- online. Bids can only be placed online at Bright Auctions. All information about the auction is available on the website <https://bit.ly/4m0cuXc> The Vripack Trawler 1960 is a well-maintained trawler, currently located in Turkey. In 2020, "Braveheart" underwent a comprehensive refit, followed by substantial maintenance in 2025. This timeless and seaworthy yacht is in excellent condition and perfectly suited for long voyages or comfortable onboard living. VAT has been paid in Turkey.

*Sjoerd Paddenburg*

## SPECIFICATIONS

|                     |                               |                |                                 |
|---------------------|-------------------------------|----------------|---------------------------------|
| <b>Dimensions</b>   | 19.60 x 5.60 x 1.50 (m)       | <b>Builder</b> | Tufan & Brothers                |
| <b>Built</b>        | 2010                          | <b>Cabins</b>  | 3                               |
| <b>Material</b>     | Steel                         | <b>Berths</b>  | 6                               |
| <b>Engine(s)</b>    | 2 x John Deere 6068TFM diesel | <b>Hp/Kw</b>   | 2 x 225.00 (hp), 165.60 (kw)    |
| <b>Asking price</b> | € 520.000 (VAT Not paid)      | <b>Lying</b>   | elsewhere / Not at sales office |

## CONTACT

|                     |  |                  |                      |
|---------------------|--|------------------|----------------------|
| <b>Sales office</b> | De Valk Loosdrecht B.V.  | <b>Telephone</b> | +31 (0)35 582 90 30  |
| <b>Address</b>      | 't Breukeleveense Meentje 6<br>1231LM Loosdrecht / Wijdmeren<br>NL | <b>E-mail</b>    | loosdrecht@devalk.nl |

## DISCLAIMER

These particulars are given in good faith as supplied but cannot be guaranteed.



# VRIPACK TRAWLER 1960

## GENERAL

|                                     |   |
|-------------------------------------|---|
| <b>Model</b>                        | VRIPACK TRAWLER 1960  |
| <b>Type</b>                         | motor yacht   |
| <b>LOA (m)</b>                      | 19,60   |
| <b>LWL (m)</b>                      | 18,00   |
| <b>Beam (m)</b>                     | 5,60  |
| <b>Draft (m)</b>                    | 1,50  |
| <b>Year built</b>                   | 2010  |
| <b>Builder</b>                      | Tufan & Brothers  |
| <b>Country</b>                      | Turkey  |
| <b>Displacement (t)</b>             | 57,5  |
| <b>CE norm</b>                      | A   |
| <b>Hull material</b>                | steel   |
| <b>Hull colour</b>                  | red   |
| <b>Hull shape</b>                   | multi hard chine  |
| <b>Superstructure material</b>      | steel   |
| <b>Fuel tank (litre)</b>            | 3000  |
| <b>Level indicator (fuel tank)</b>  | WEMA  |
| <b>Freshwater tank (litre)</b>      | 1500 + 200 potable tank and with Water purifier - Electroscan 24  |
| <b>Level indicator (freshwater)</b> | WEMA  |
| <b>Blackwater tank (litre)</b>      | 1800  |
| <b>Level indicator (blackwater)</b> | WEMA  |
| <b>Blackwater tank extraction</b>   | deck extraction + pump Gianceschi MV44 pump, also for grey water  |
| <b>Greywater tank (litre)</b>       | 1800  |
| <b>Level indicator (greywater)</b>  | WEMA  |
| <b>Wheel steering</b>               | hydraulic Ezberci   |
| <b>Flybridge helm position</b>      | hydraulic Ezberci   |
| <b>More info on hull</b>            | Thickness gaugeing done 2025  |
| <b>More info on paintwork</b>       | The bottom is sanded every three years and painted annually.<br>Hull, Superstructure and Exterior completely repainted 2020 |
| <b>Extra info</b>                   | Teak surfaces completely refurbished or changed to new 2020   |



# VRIPACK TRAWLER 1960

|            |  |
|------------|--|
| Extra info | Bottom painted stripped and renewed 2025 |
| Extra info | Underwater lights renewed 2025           |

## ACCOMMODATION

|                       |  |
|-----------------------|--|
| Cabins                | 3  |
| Berths                | 6  |
| Crew cabin            | 1  |
| Crew berths           | 2  |
| Interior              | All interior Ceilings renewed 2020                         |
| Floor                 | Entire carpeting redone in 2025                            |
| Air-conditioning      | reverse cycle airco CRUISAIR Throughout 96,000 BTU         |
| Countertop            | corian   |
| Sink                  | corian Double with faucet                                  |
| Cooker                | calor gas Miele - 4 burners                                |
| Oven                  | Miele H2265-1B x 220V                                      |
| Extractor             | Miele Edstd  |
| Fridge                | Miele 400lt – AC, twin door + Isotherm 60 lt + Waeco 30 lt |
| Freezer               | Arçelik 90 lt  |
| Hot water system      | 220V + engine Boiler Nautic 60 lt.                         |
| Water pressure system | electrical Pedrellox2                                      |
| Dishwasher            | Miele G7150 SCVix220                                       |
| Owners cabin          | French bed   |
| Bathroom              | en suite   |
| Toilet                | en suite   |
| Toilet system         | electric TECMA – Silence Plus White – 24V                  |
| Wash basin            | in the bathroom  |
| Shower                | en suite   |
| Guest cabin 1         | twin single  |
| Bathroom              | en suite   |
| Toilet                | en suite   |
| Toilet system         | electric TECMA – Silence Plus White – 24V                  |



# VRIPACK TRAWLER 1960

|                 |   |
|-----------------|---|
| Wash basin      | in the bathroom                           |
| Shower          | en suite                                  |
| Guest cabin 2   | twin single                               |
| Bathroom        | en suite                                  |
| Toilet          | en suite                                  |
| Toilet system   | electric TECMA – Silence Plus White – 24V |
| Wash basin      | in the bathroom                           |
| Shower          | en suite                                  |
| Washing machine | BOSCH WVH28420EV                          |
| Extra info      | Refrigerator store: Liebherr x 2 90 lt    |
| Extra info      | Remote controlled Somfy curtains/blinds   |

## MACHINERY

|                       |   |
|-----------------------|---|
| No of engines         | 2   |
| Make                  | John Deere  |
| Type                  | 6068TFM   |
| HP                    | 225   |
| kW                    | 165.60  |
| Fuel                  | diesel  |
| Maximum speed (kn)    | 10  |
| Cruising speed (kn)   | 9   |
| Consumption (l/hr)    | 24  |
| Range (nm)            | 1130  |
| Engine hours          | 1500  |
| Engine cooling system | freshwater heat exchanger + EBM Bapst engine room blowers |
| Drive                 | shaft   |
| Shaft seal            | Renewed 2025 + bearings                                   |
| Engine controls       | electrical ZF Microcommander                              |
| Gearbox               | hydraulic Twin Disc 5061 - 2,43:1                         |
| Bowthruster           | electric MAX POWER CT325 – 24V (new 2023)                 |
| Propeller type        | fixed   |



# VRIPACK TRAWLER 1960

|                                  |   |
|----------------------------------|---|
| <b>Propeller blades</b>          | 5 - 30"   |
| <b>Propeller shaft material</b>  | stainless steel   |
| <b>Electric bilge pump</b>       | yes   |
| <b>Electrical installation</b>   | 12V / 24 V / 220 V  |
| <b>Generator</b>                 | ONAN 13.5 kW MDKBP  |
| <b>Running hours generator</b>   | 3000  |
| <b>Generator 2</b>               | ONAN 13.5 kW MDKBP  |
| <b>Running hours generator 2</b> | 3000  |
| <b>Start battery</b>             | 2x Varta 210 AH   |
| <b>Service battery</b>           | 12x Sonnenschein 200 Ah   |
| <b>Generator battery</b>         | On main engine batteries  |
| <b>Battery charger</b>           | MASTERVOLT Mass 24 V / 60-3 + MASTERVOLT Mass 24 V / 50-2                               |
| <b>Inverter</b>                  | MASTERVOLT Mass Comb) 24V / 3500W – 100A – 220V/50Hz                                    |
| <b>Shorepower</b>                | with cable MASTERVOLT – 50 Amp  |
| <b>Insulation transformer</b>    | MASTERVOLT GI – 7 kW + Megger Test in 2025  |
| <b>Watermaker</b>                | Parker Seafar) SFC 1800-2, 284 Lt/h (new 2023)  |
| <b>Stabilizers</b>               | fin MATN'S 300  |
| <b>Extra info</b>                | Alternator : MASTERVOLT 110V / 24 Amp – With Regulator                                  |
| <b>Extra info</b>                | Engine room completely repainted 2020   |
| <b>Extra info</b>                | Engines serviced annually All mech. parts in engine room full serviced, or changed 2020 |

## NAVIGATION

|                          |  |
|--------------------------|--|
| <b>Compass</b>           | RITCHIE  |
| <b>Depth sounder</b>     | RAYMARINE ST 60  |
| <b>Depth sounder/log</b> | RAYMARINE ST 60  |
| <b>VHF</b>               | RAYMARINE Ray240E                                      |
| <b>Radar</b>             | RAYMARINE 24-inch RD424HD Quantum2                     |
| <b>Radar/GPS/plotter</b> | RAYMARINE Hybrid Touch 22-inch + RAYMARINE 9-inch E90W |
| <b>Camera</b>            | RAYMARINE Cam + 5x Hikvision safety camera             |



# VRIPACK TRAWLER 1960

**Searchlight**

Matromarine x 3 – Remote Controlled

## EQUIPMENT

**Gangway**

Ezberci 3000 - Retractable telescopic 2 piece

**Windlass**

electrical LOFRANS Titan B-2300

**Dinghy**

rigid inflatable Yamaha Brig tender 4 m

**Outboard**

YAMAHA 50 hp (serviced every year by Yamaha)

**Deck crane**

hydraulic On flybridge - Ezberci 500SWL- Dc (new 2022)

**Life raft (pers)**

10

**Wiper**

SPEICH

**TV**

Samsung UE43MU7000U in saloon

**Satellite**

RAYMARINE 60cm – with 1 x Dummy

**Radio**

Fusion Multizone

**Speakers in salon**

yes

**Auto extinguisher system**

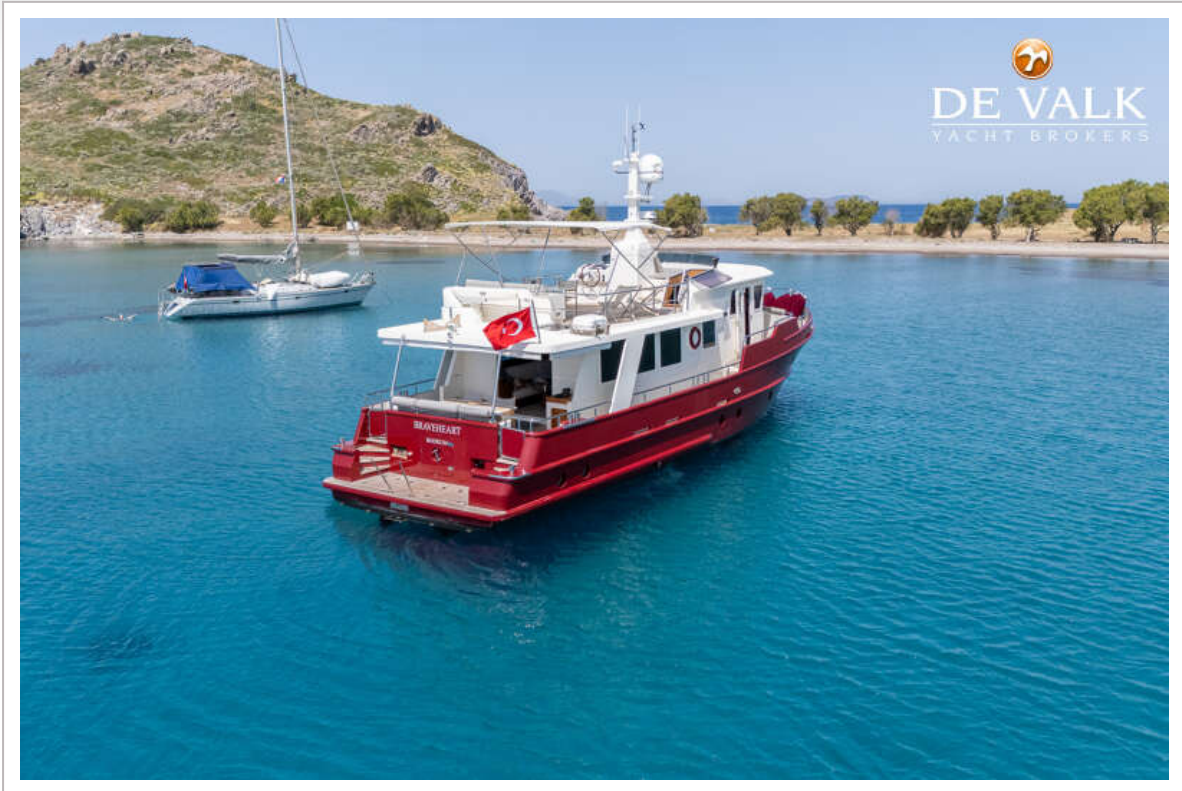
Fireboy FM 200 manual/automatic



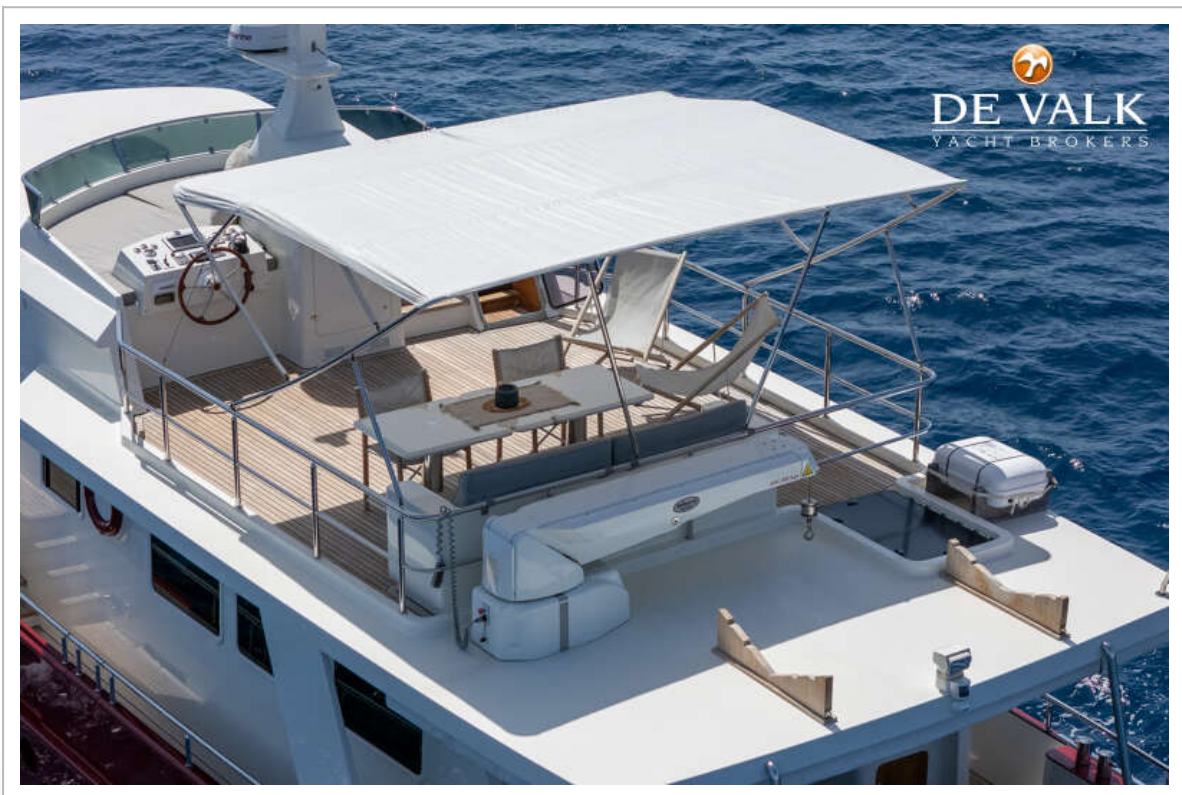
# VRIPACK TRAWLER 1960



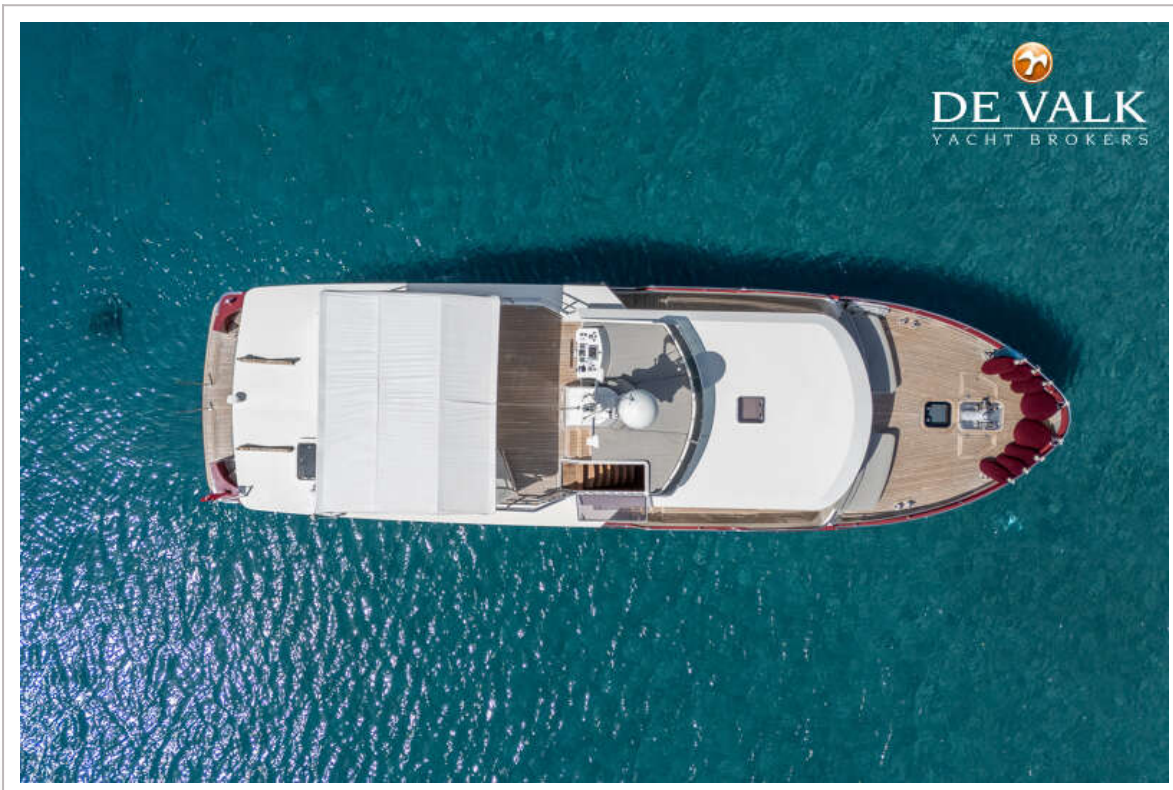
# VRIPACK TRAWLER 1960



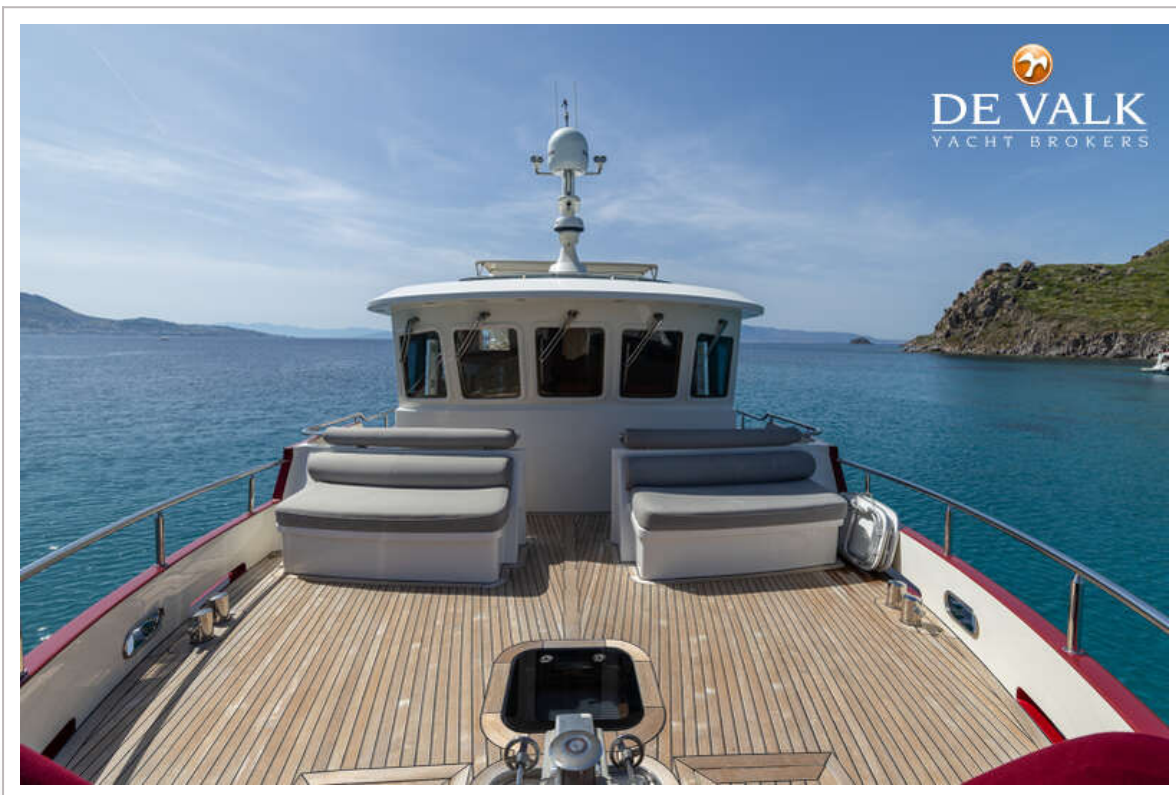
# VRIPACK TRAWLER 1960



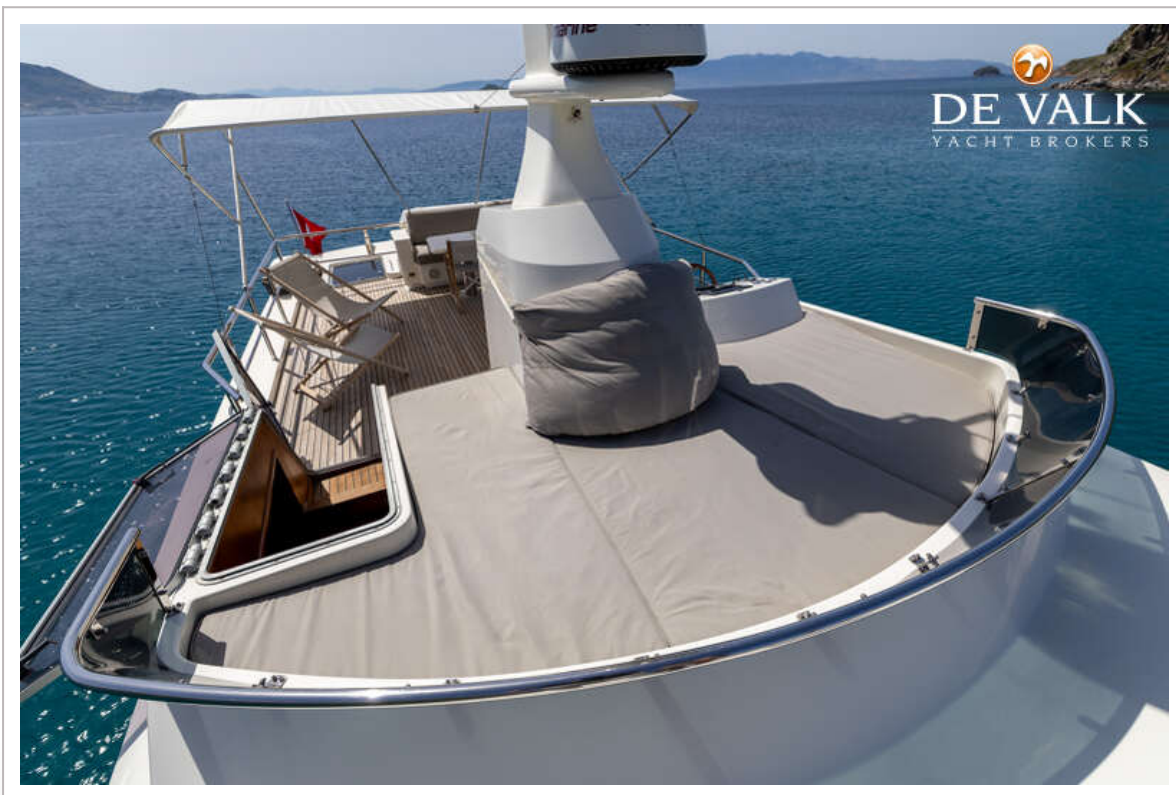
# VRIPACK TRAWLER 1960



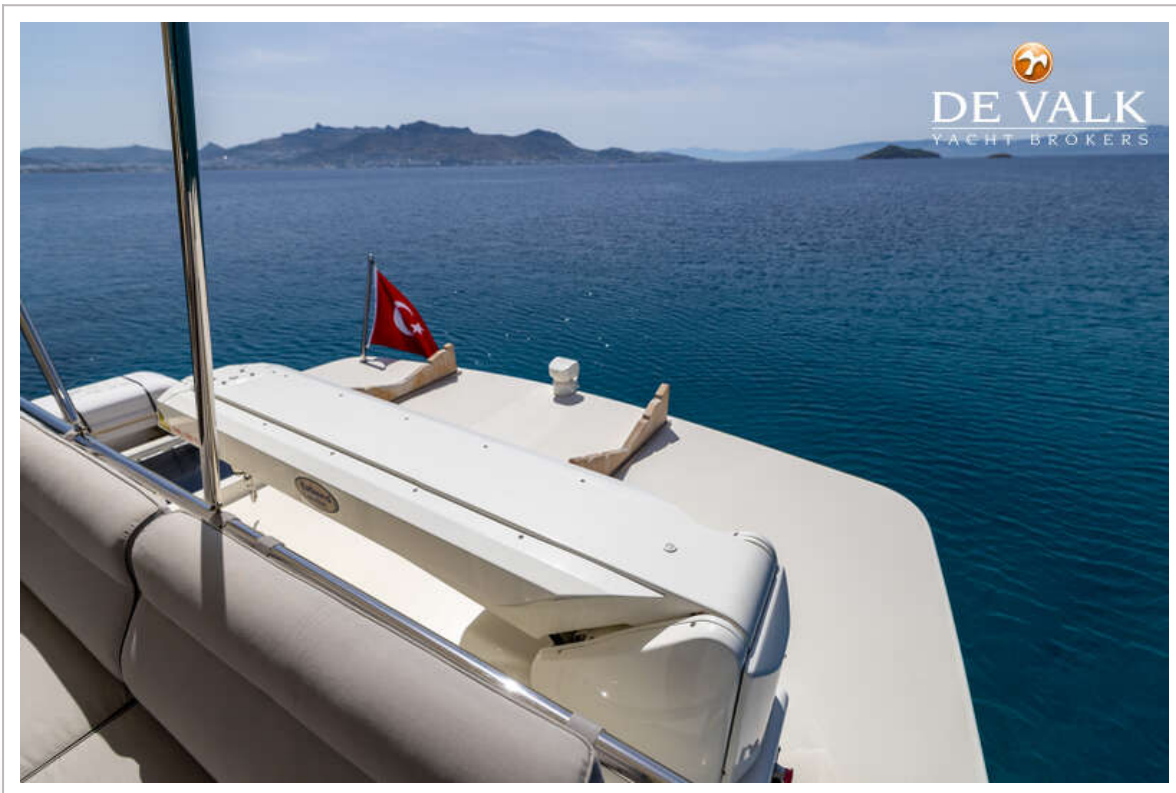
# VRIPACK TRAWLER 1960



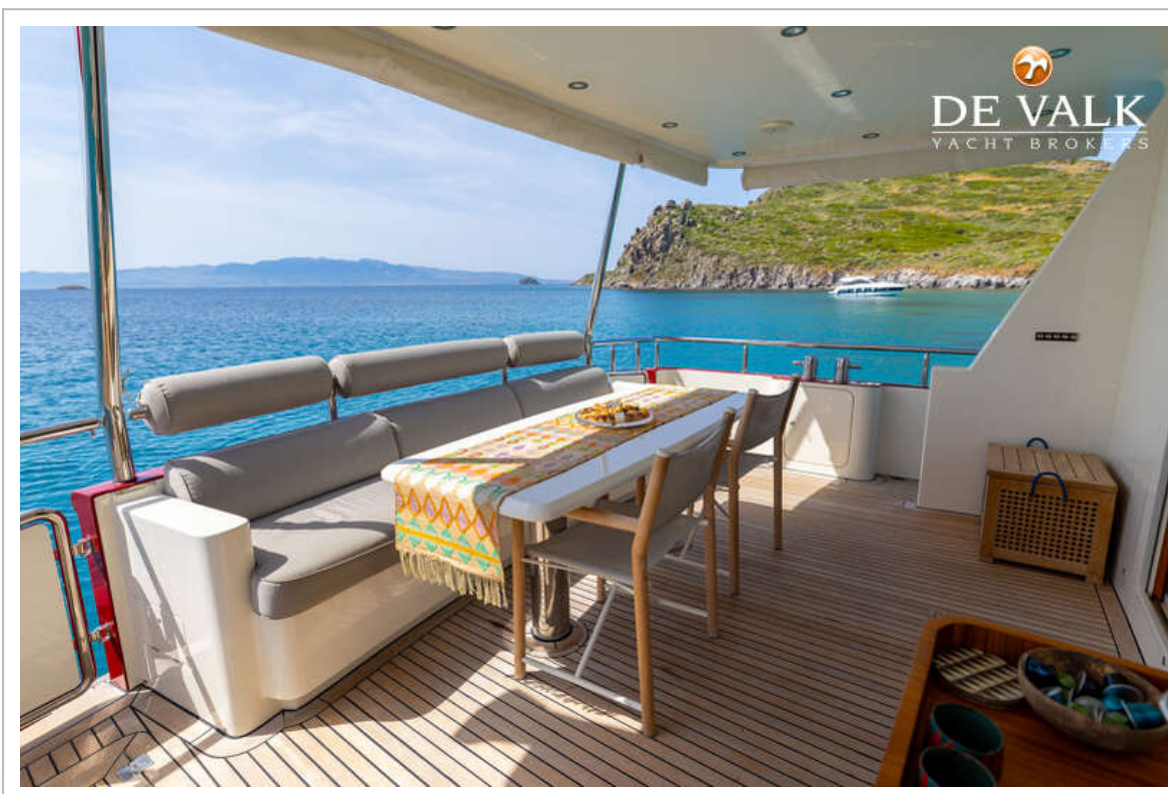
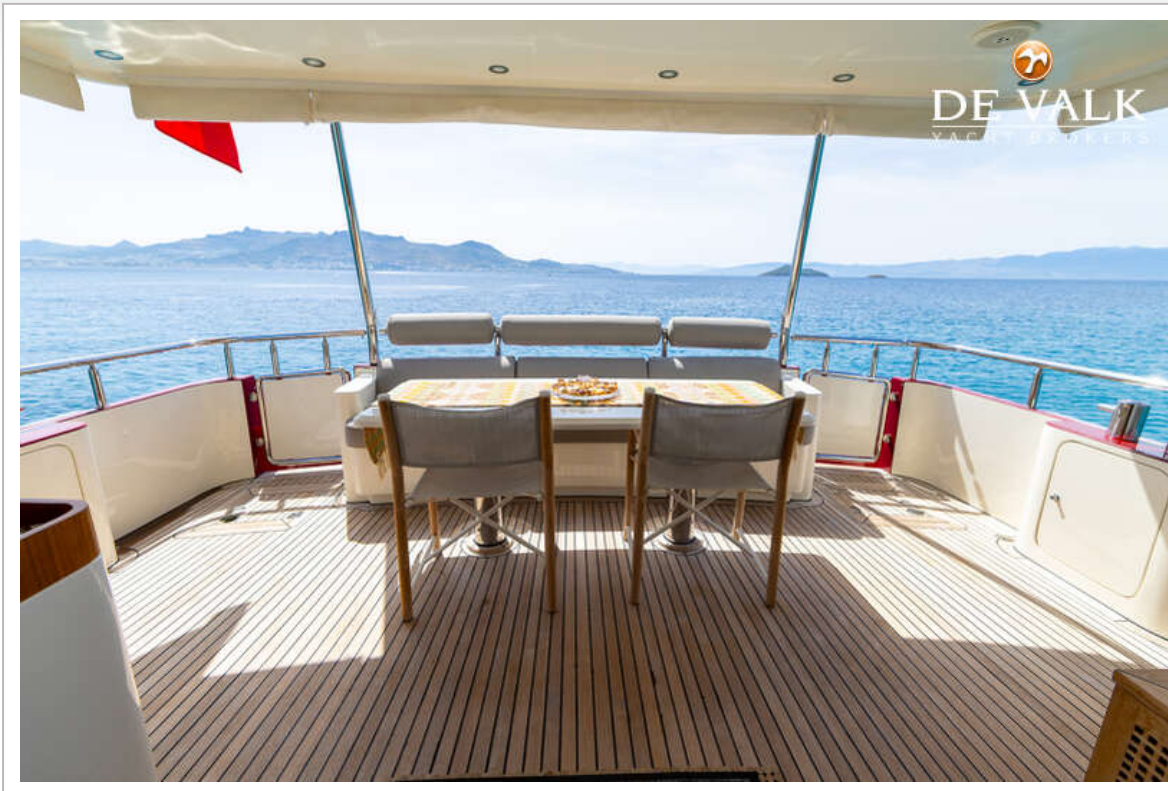
# VRIPACK TRAWLER 1960



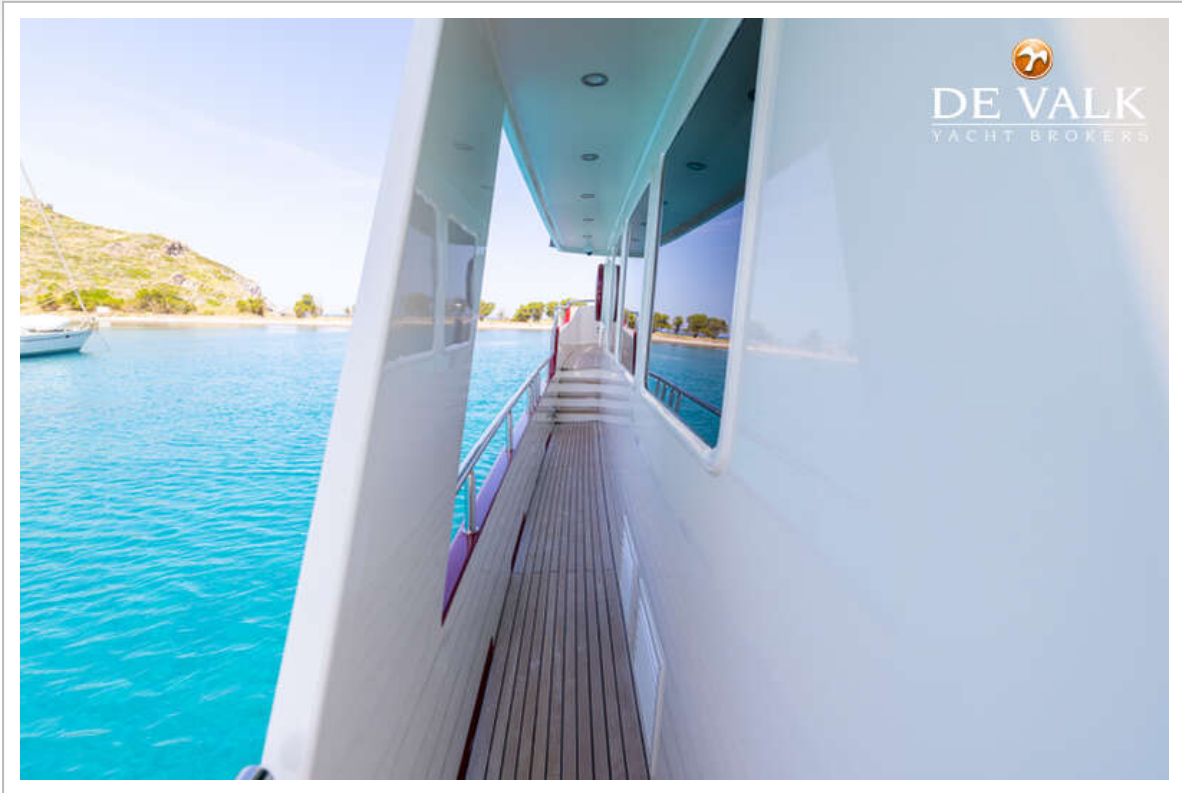
# VRIPACK TRAWLER 1960



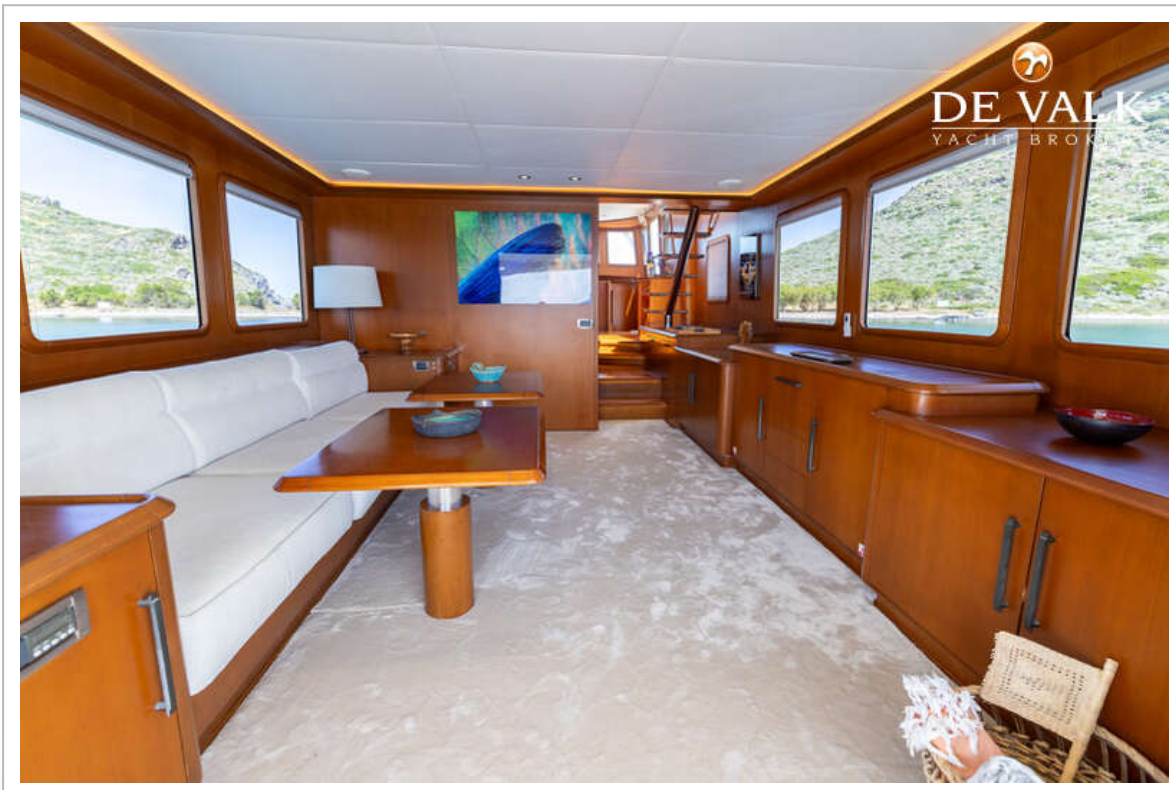
# VRIPACK TRAWLER 1960



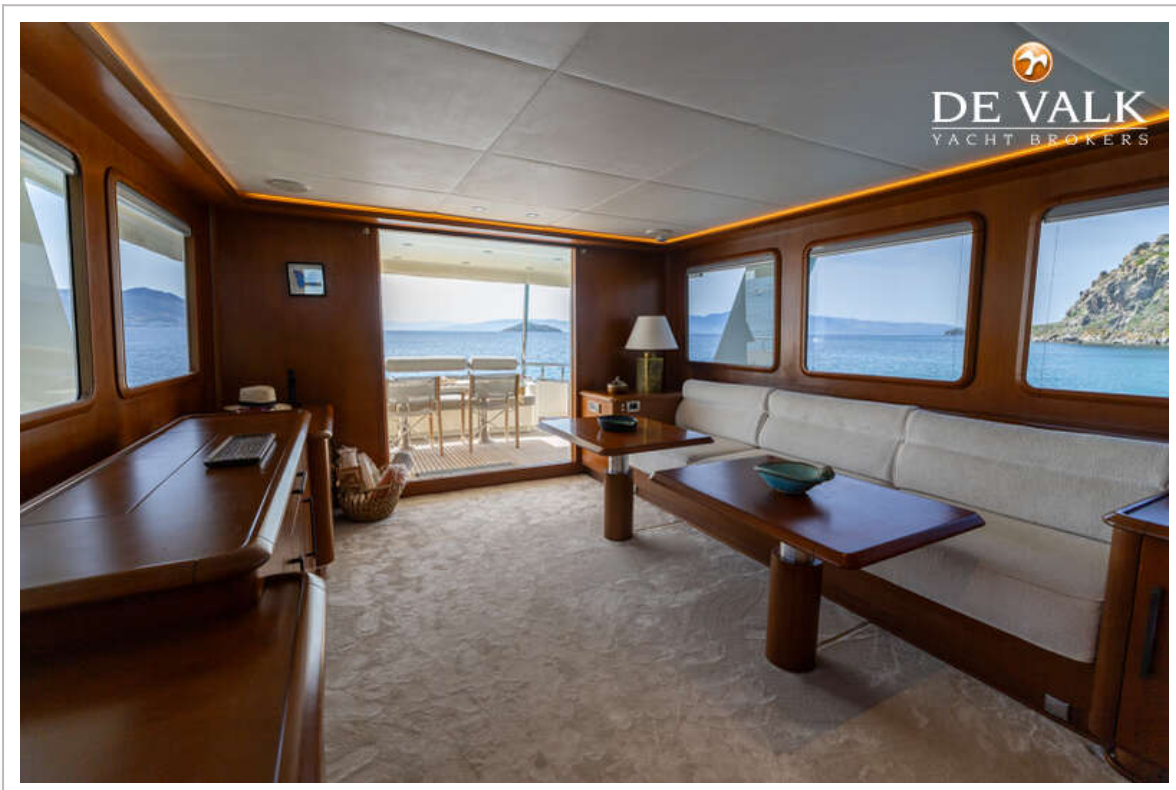
# VRIPACK TRAWLER 1960



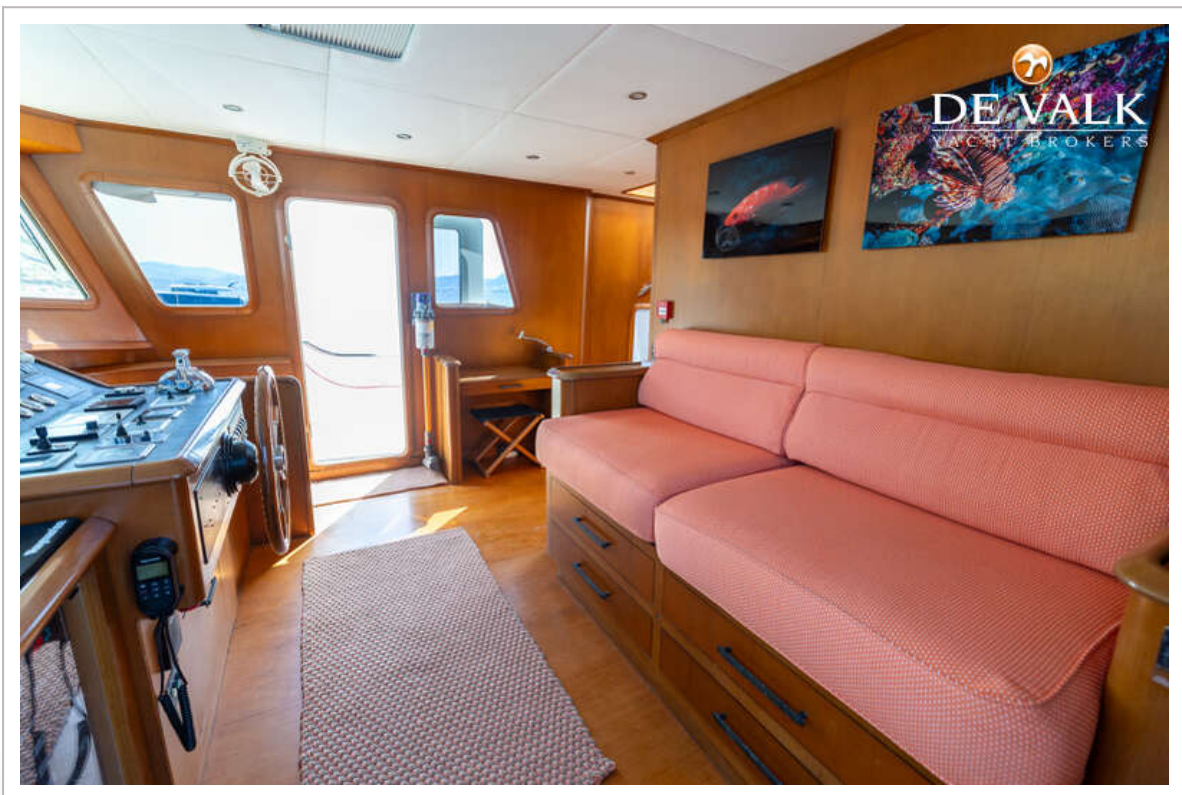
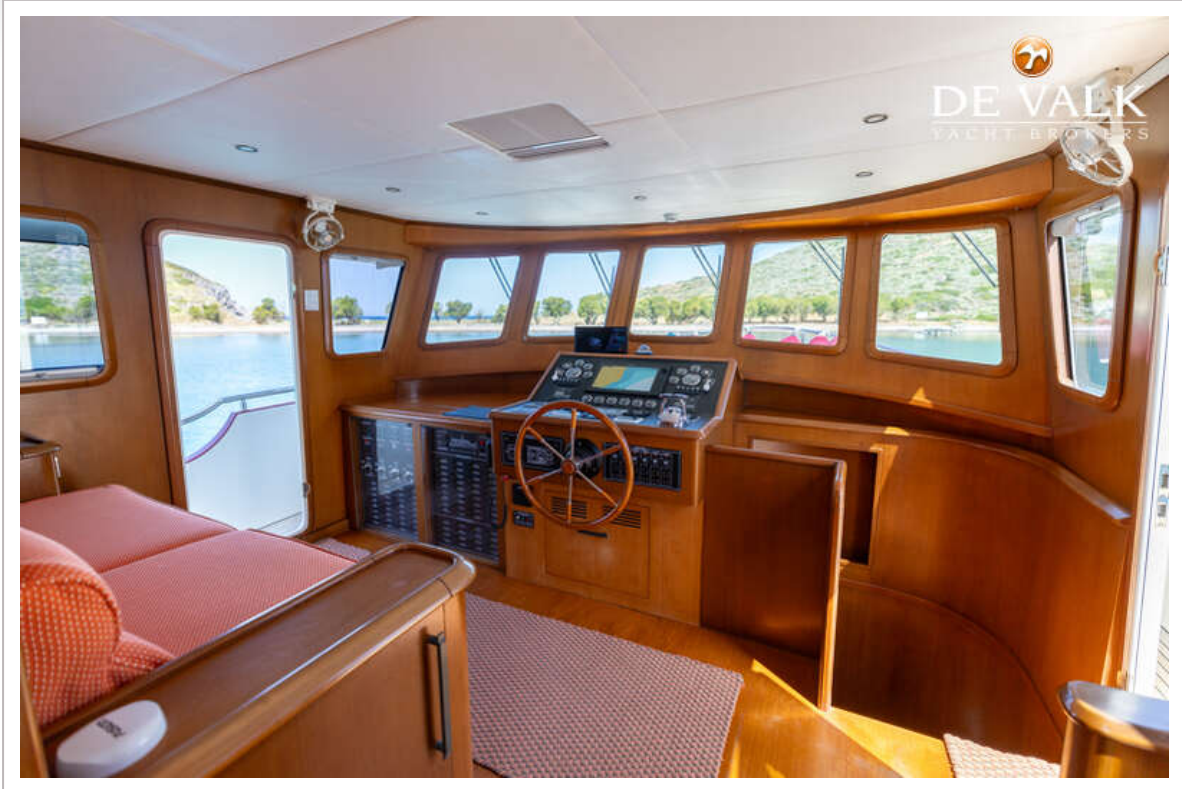
# VRIPACK TRAWLER 1960



# VRIPACK TRAWLER 1960



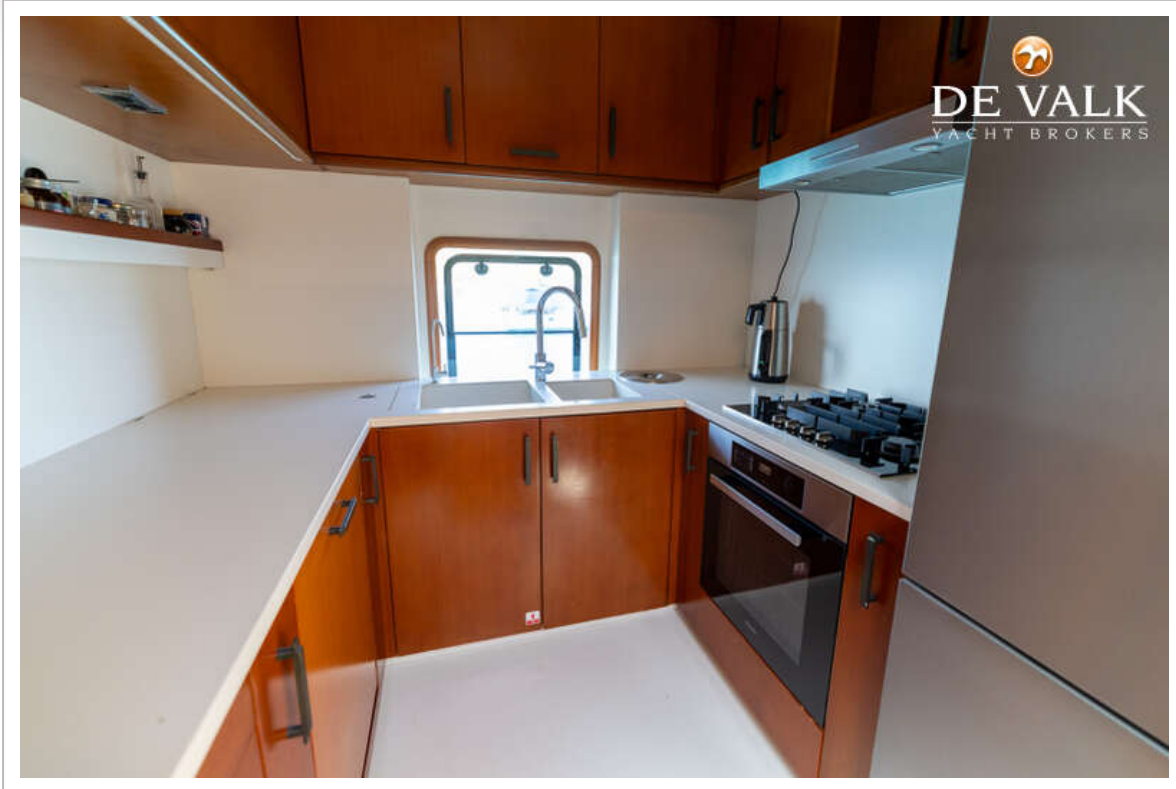
# VRIPACK TRAWLER 1960



# VRIPACK TRAWLER 1960



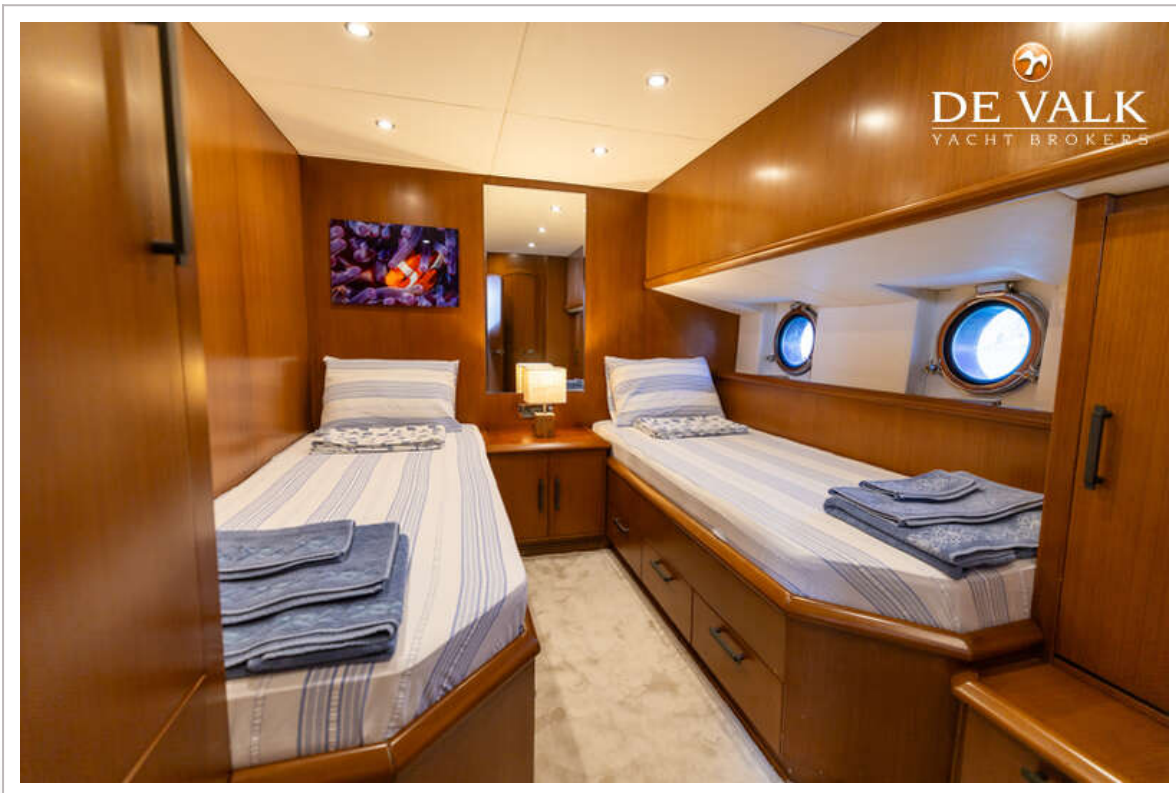
# VRIPACK TRAWLER 1960



# VRIPACK TRAWLER 1960



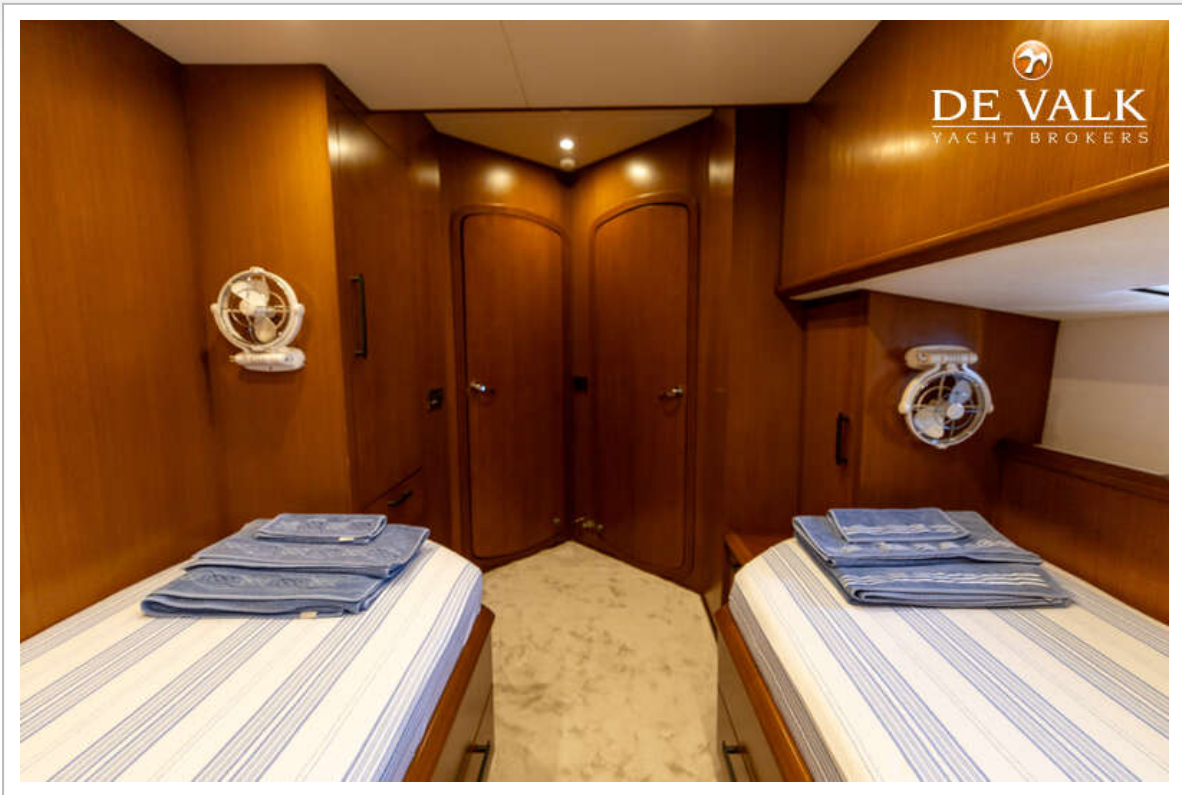
# VRIPACK TRAWLER 1960



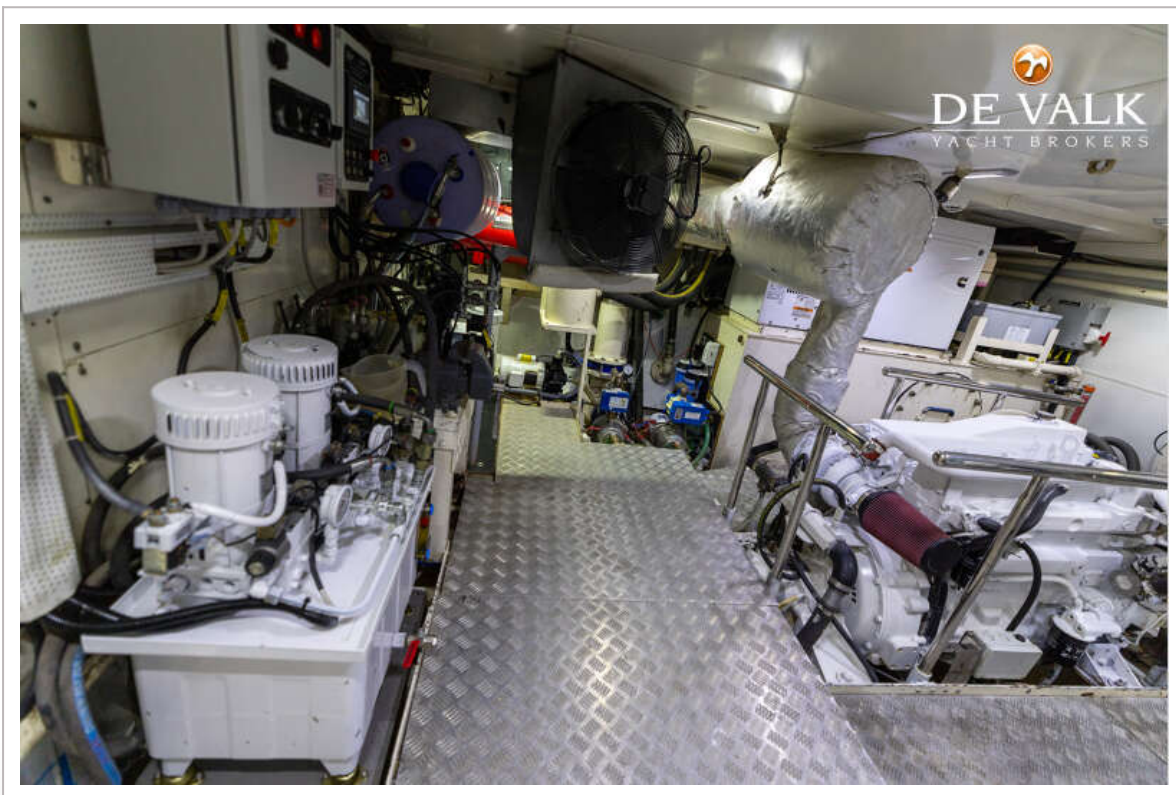
# VRIPACK TRAWLER 1960



# VRIPACK TRAWLER 1960



# VRIPACK TRAWLER 1960



# VRIPACK TRAWLER 1960



# VRIPACK TRAWLER 1960

