



DE VALK
YACHT BROKERS



FAIRLINE PHANTOM 46



DE VALK
YACHT BROKERS

FAIRLINE PHANTOM 46

BROKER'S COMMENTS

The Phantom combines Fairline's Squadron and Targa into an excellent sports bridge cruiser. This Phantom 46 has been kept in excellent condition and is perfect for any type of cruising. Plenty of space on board to fully enjoy the water. Raymarine, hydraulic passerelle, Onan generator, bow & stern thrusters with remote control. Flybridge with wet bar and grill and spacious aft deck. The boat was mainly sailed on sweet water. Easy docking due to great overview from Flybridge. This boat is ready to go on great trips.

Jeanne Stukstette

SPECIFICATIONS

Dimensions	14.59 x 4.32 x 1.12 (m)	Builder	Fairline
Built	2005	Cabins	3
Material	GRP	Berths	8
Engine(s)	2 x Volvo penta TAMD 75P diesel	Hp/Kw	2 x 480.00 (hp), 353.28 (kw)
Asking price	€ 269.500 (VAT Paid)	Lying	at sales office

CONTACT

Sales office	De Valk Limburg	Telephone	+31 630372559
Address	Schippersveld 3 6019 DE Wessem NL	E-mail	limburg@devalk.nl

DISCLAIMER

These particulars are given in good faith as supplied but cannot be guaranteed.



FAIRLINE PHANTOM 46

GENERAL

Model	FAIRLINE PHANTOM 46
Type	motor yacht
LOA (m)	14,59
Beam (m)	4,32
Draft (m)	1,12
Air draft (m)	5,03
Air draft min (m)	4,40
Year built	2005
Builder	Fairline
Country	United Kingdom
Designer	Fairline
Displacement (t)	16
CE norm	B
Hull material	GRP
Hull colour	white
Hull shape	deep-V
Superstructure material	GRP
Rubbing strake	stainless steel Stainless steel with rubber insert
Deck material	GRP
Deck finish	non-skid moulded in
Cockpit deck finish	teak Anti-slip all-round with Teak deck deck saloon + Teak flybridge
Antifouling (year)	2021 (COMPLETE NEW SYSTEM / PERFECT CONDITION)
Dorades	8
Window frame	aluminium
Window material	tempered glass TINTED
Deckhatch	1x
Flybridge	yes
Flybridge cover	yes
Flybridge cockpit cover	yes
Flybridge suncover	yes



FAIRLINE PHANTOM 46

Radar arch	non collapsible
Fuel tank (litre)	aluminium 1591 Li
Level indicator (fuel tank)	VDO
Freshwater tank (litre)	stainless steel 702 Li
Level indicator (freshwater)	yes
Blackwater tank (litre)	GRP WEMA 200 Li
Level indicator (blackwater)	yes
Wheel steering	hydraulic
Inside helm position	yes
Flybridge helm position	hydraulic
Extra info	Boat was mainly on on fresh water

ACCOMMODATION

Cabins	3
Berths	8
Interior	mahogany
Floor	carpet
Deck saloon	yes
Saloon	yes
Headroom saloon (m)	2.0M
Heating	diesel ducted hot air WEBASTO
Navigation center	yes
Convertible berth	2P
Sliding door to aft deck	yes
Galley	yes
Countertop	granite
Sink	stainless steel
Cooker	electric
Microwave/oven combi	yes
Fridge	3 x (1x in galley + 1x in kitchen + 1x flybridge)
Freezer	yes



FAIRLINE PHANTOM 46

Hot water system	220V + engine
Water pressure system	electrical
Owners cabin	double bed
Bed length (m)	1.60x2.00
Wardrobe	hanging/drawers/shelves
Bathroom	en suite
Toilet	en suite
Toilet system	electric JABSCO
Wash basin	in the bathroom
Shower	en suite 3 x (2xbathroom + 1x bathing platform)
Guest cabin 1	double bed
Bed length (m)	Double or 2 singels 1.70x1.95
Wardrobe	hanging
Bathroom	shared
Toilet	shared
Toilet system	electric JABSCO
Wash basin	in the bathroom
Shower	shared
Guest cabin 2	bunk bed
Bed length (m)	0.65x1.85
Wardrobe	hanging
Bathroom	shared
Washing machine	yes
Sky lounge	yes
Flybridge	yes
Wet bar	yes
Extra info	Shade covers for complete boat
Extra info	Mosquito nets for all windows

MACHINERY

No of engines	2
---------------	---



FAIRLINE PHANTOM 46

Make	Volvo penta
Type	TAMD 75P
HP	480
kW	353.28
Fuel	diesel
Drive	shaft
Engine controls	electrical EDC
Bowthruster	electric WITH REMOTE CONTROL
Sternthruster	electric WITH REMOTE CONTROL
Propeller type	fixed
Propeller blades	4
Manual bilge pump	1X
Electric bilge pump	3X
Generator	wet exhaust ONAN 11kw
Start battery	1X180AH 12V
Service battery	2X180AH 12V (2023) 3 gelbatteries 2024
Bowthruster battery	yes
Sternthruster battery	yes
Battery monitor	yes
Battery charger	yes
Inverter	VICTRON ENERGY 12V 2000va 80Amp
Battery charger/inverter	VICTRON ENERGY
Shorepower	with cable
Trimtabs	yes
Extra info	The canopy of the outdoor saloon has been extended, allowing for comfortable upright seating - see photo under 'Special Features'

NAVIGATION

Compass	yes
Multi control display	yes
Depth sounder/log	yes



FAIRLINE PHANTOM 46

VHF	yes
VHF handheld	yes
Autopilot	RAYMARINE ST6001
Rudder angle indicator	yes
Radar	yes
GPS	yes
Plotter/GPS	E120 Raymarine
Radar/GPS	yes
Navigation lights	IMCO
Searchlight	yes

EQUIPMENT

Fixed windscreen	yes
Cockpit cover	yes
Bimini	yes
Sun awning	yes
Window cover	yes
Cockpit cushions	yes
Cockpit table	yes
Cockpit chairs	yes
Bathing platform	swimming platform is equipped with outdoor shower and swimming ladder
Boarding ladder	yes
Transom door	yes
Gangway	HYDRAULIC
Deck shower	Hot & cold
Anchor	Delta 20KG
Anchor chain	yes
Dinghy	rigid inflatable Talamex
Outboard	Suzuki 5ps + talamex e-motor + batterie
Deck crane	hydraulic (GANGWAY)



FAIRLINE PHANTOM 46

Sea railing	stainless steel
Grab rail (superstructure)	stainless steel
Pulpit	yes
Wiper	yes
Horn	yes
Fenders	yes
Mooring lines	yes
TV	yes
Cockpit speakers	yes
Speakers in salon	yes
Fire extinguisher	yes
Auto extinguisher system	yes
Extra info	At the front of the yacht is a beautiful sun deck with a double berth



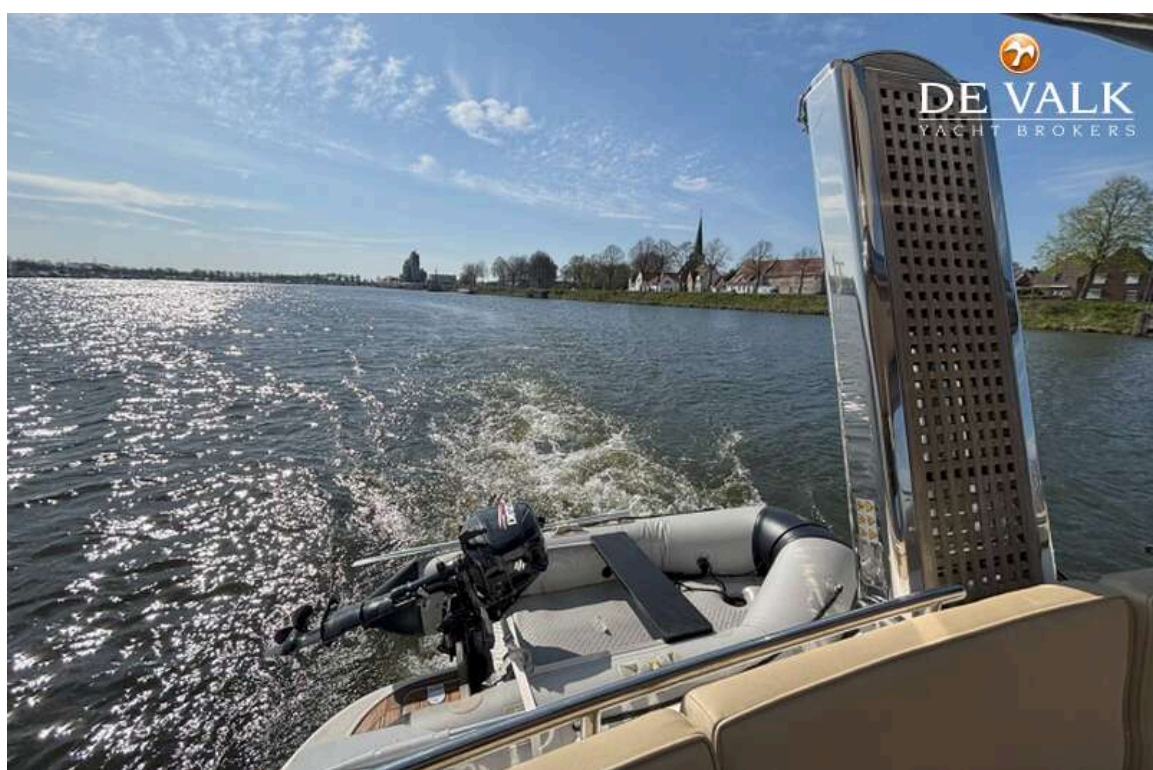
FAIRLINE PHANTOM 46



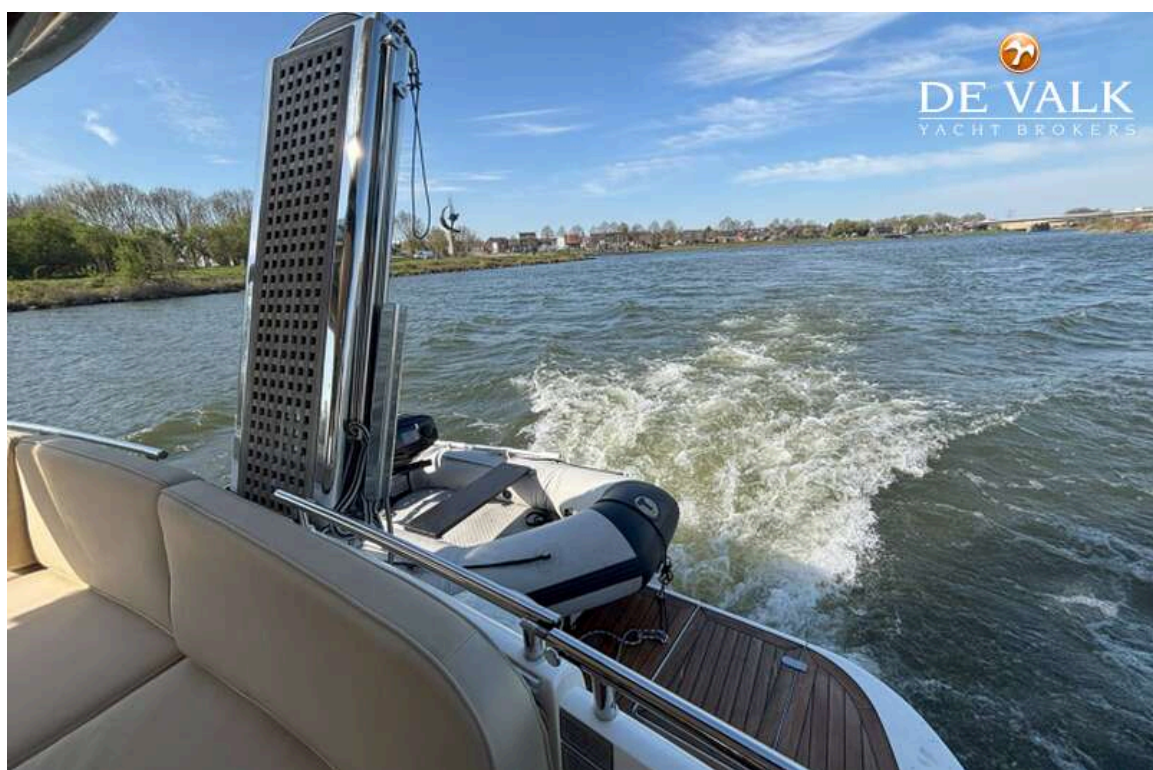
FAIRLINE PHANTOM 46



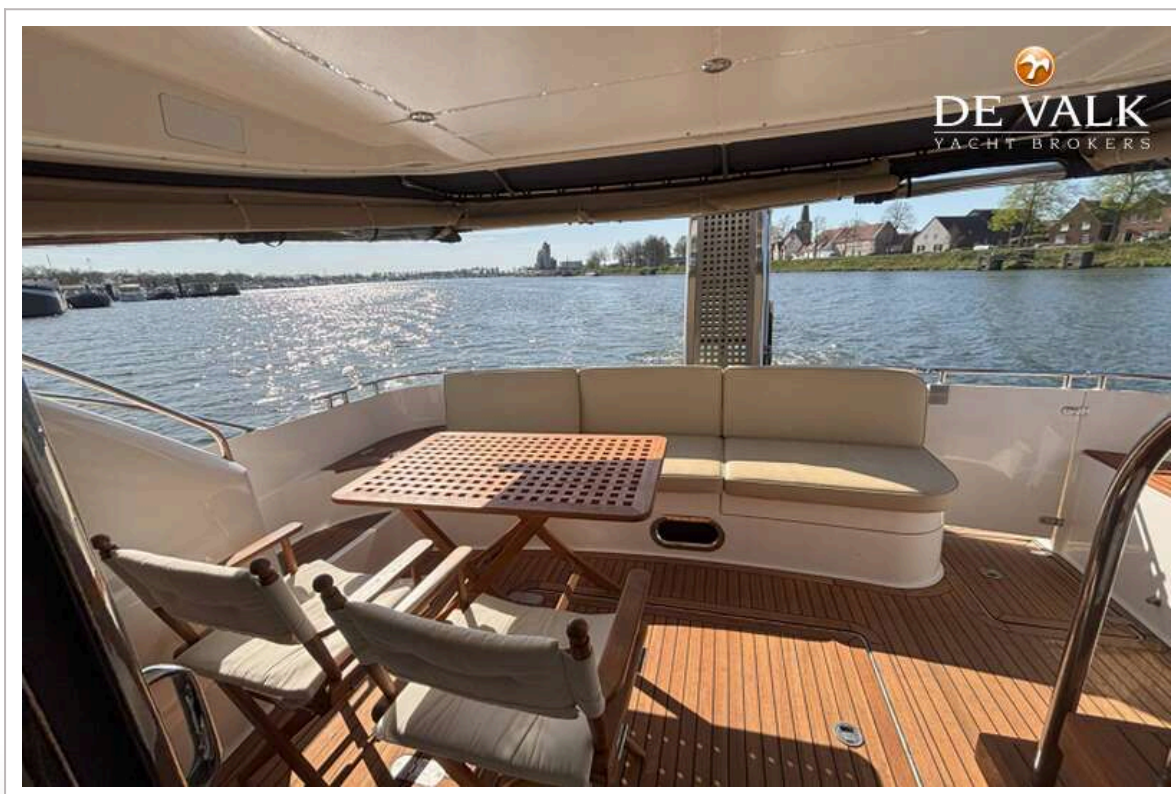
FAIRLINE PHANTOM 46



FAIRLINE PHANTOM 46



FAIRLINE PHANTOM 46



FAIRLINE PHANTOM 46



FAIRLINE PHANTOM 46



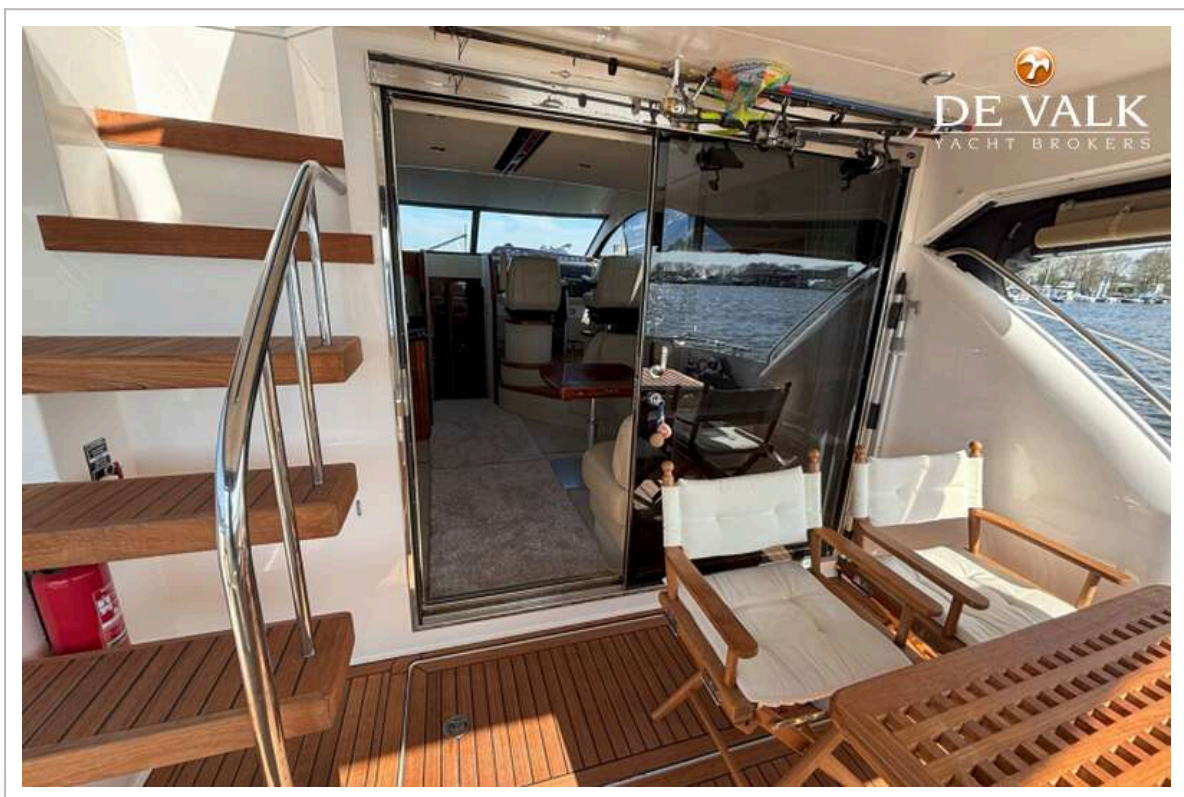
FAIRLINE PHANTOM 46



FAIRLINE PHANTOM 46



FAIRLINE PHANTOM 46



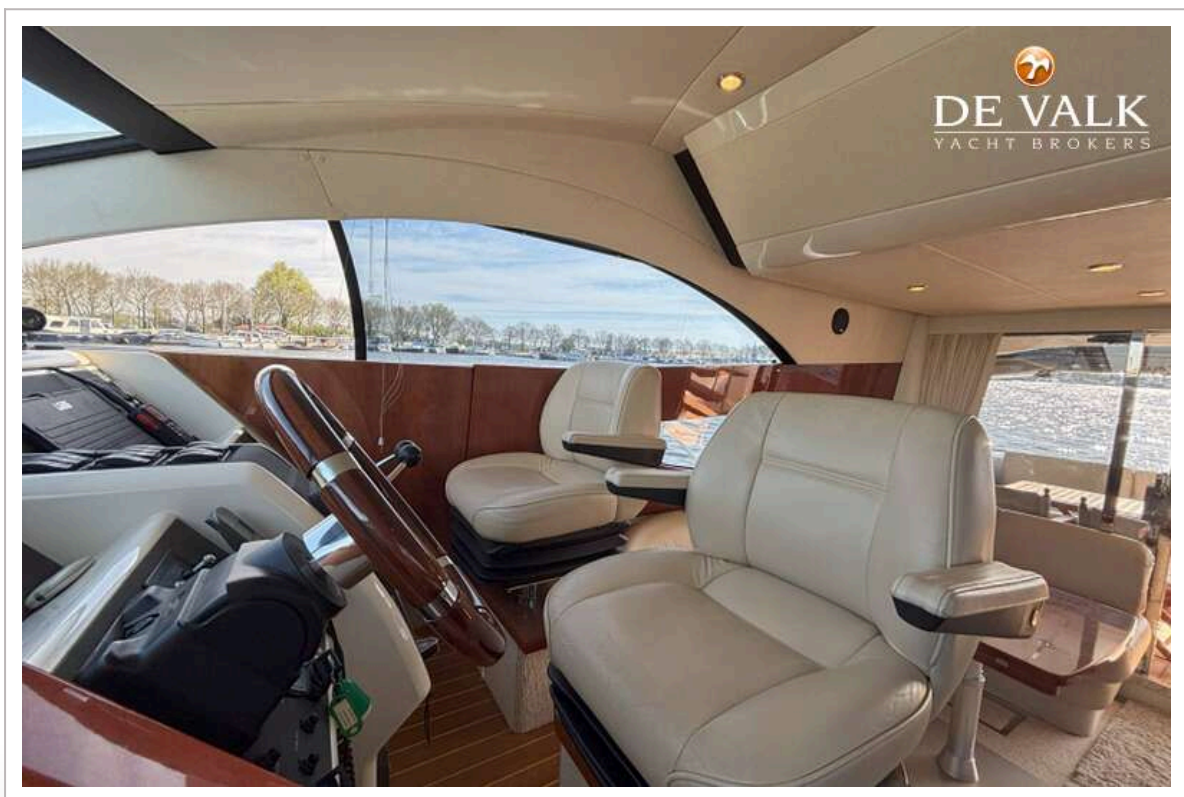
FAIRLINE PHANTOM 46



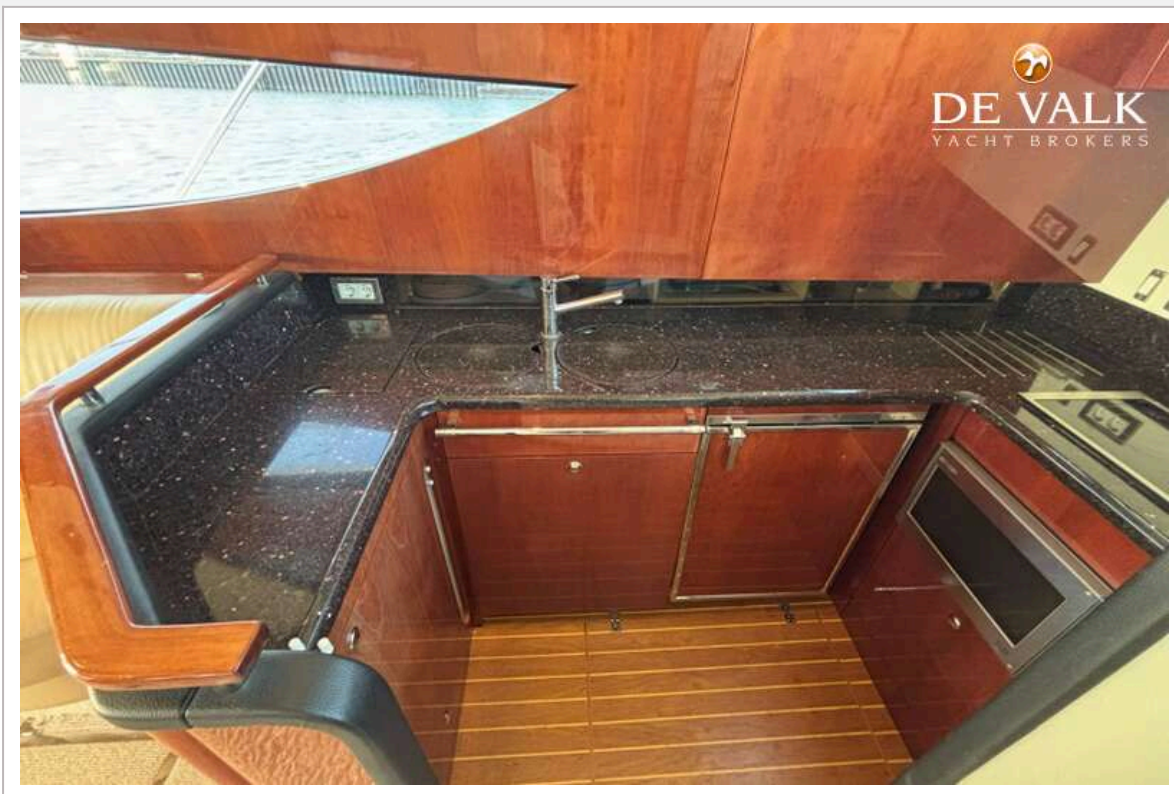
FAIRLINE PHANTOM 46



FAIRLINE PHANTOM 46



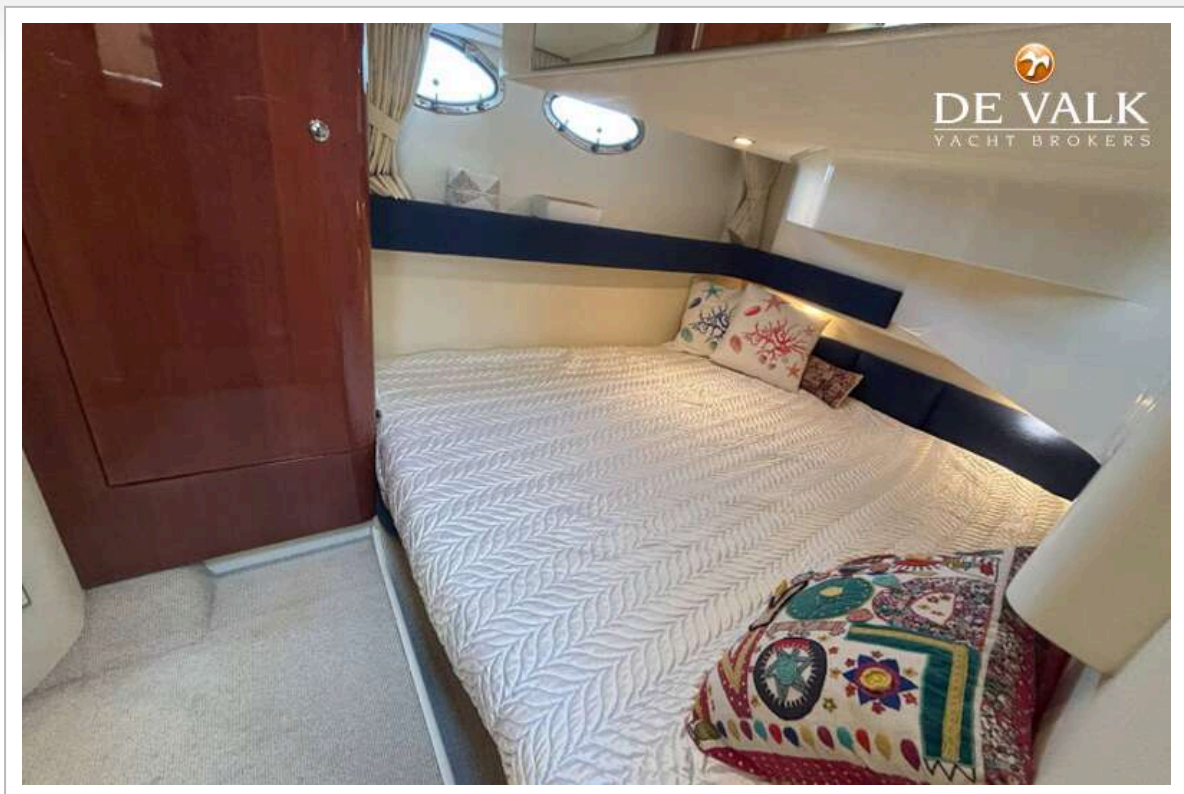
FAIRLINE PHANTOM 46



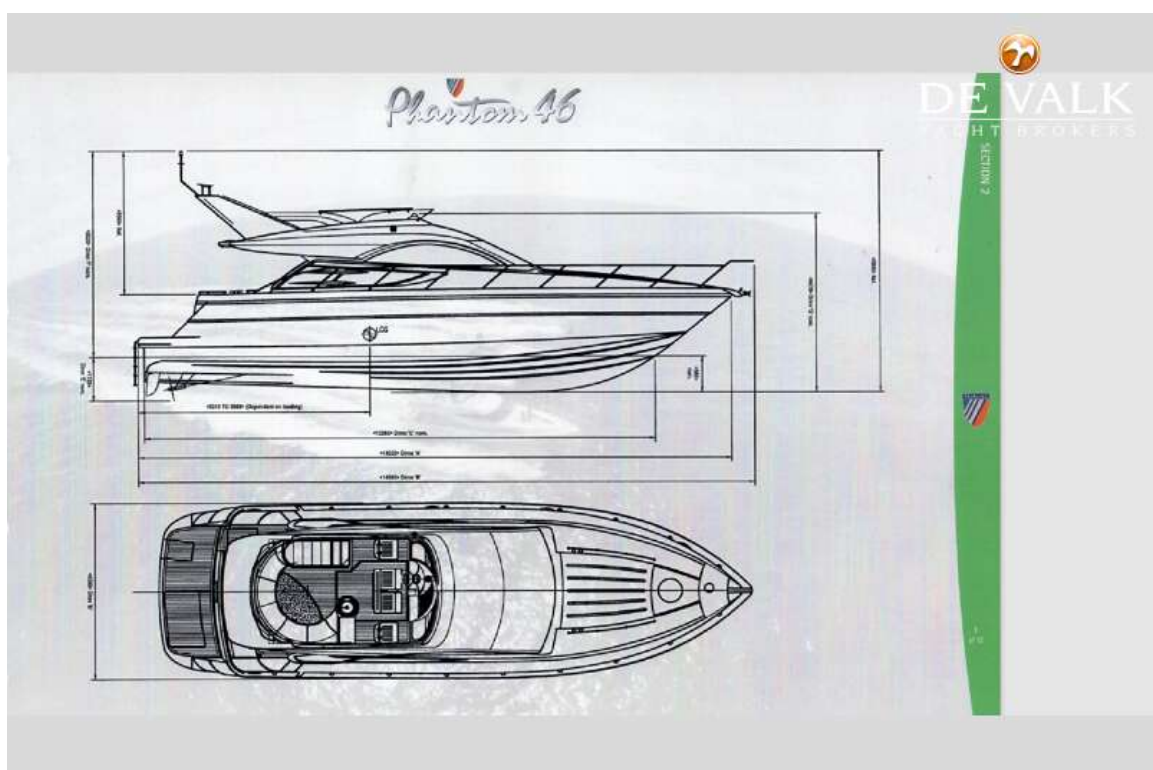
FAIRLINE PHANTOM 46

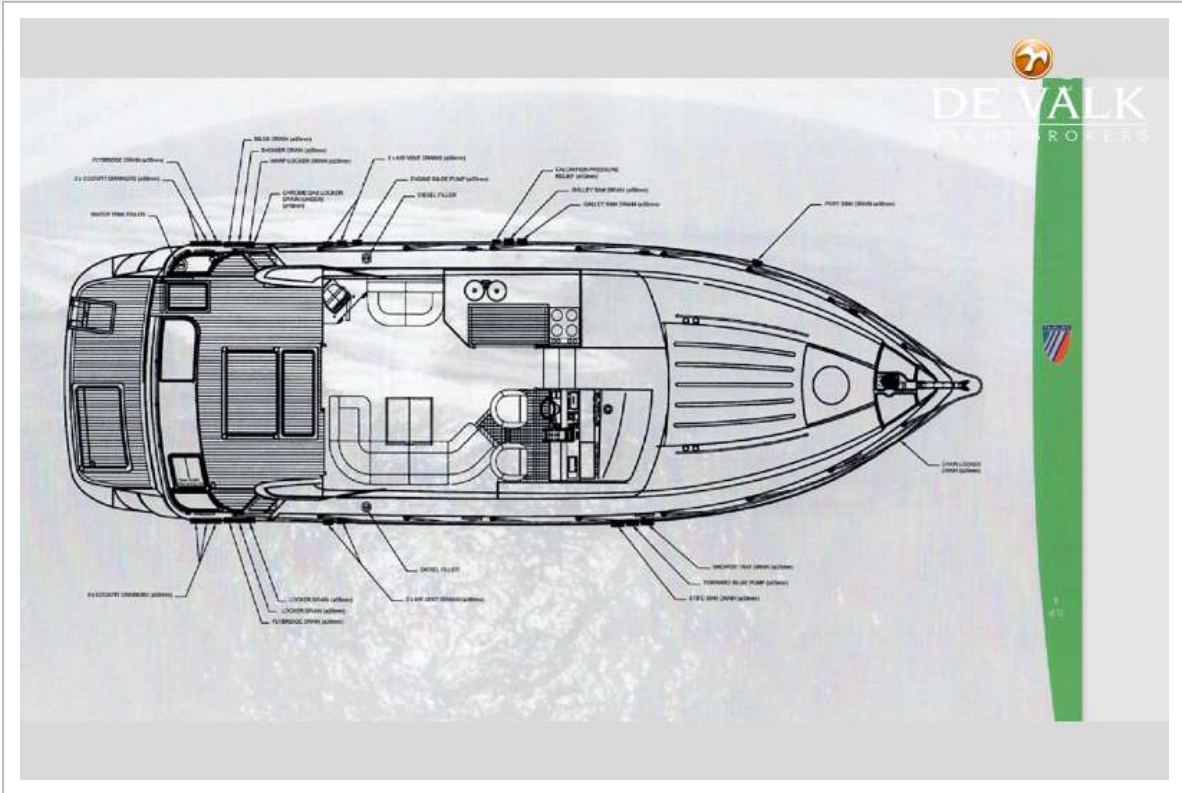


FAIRLINE PHANTOM 46

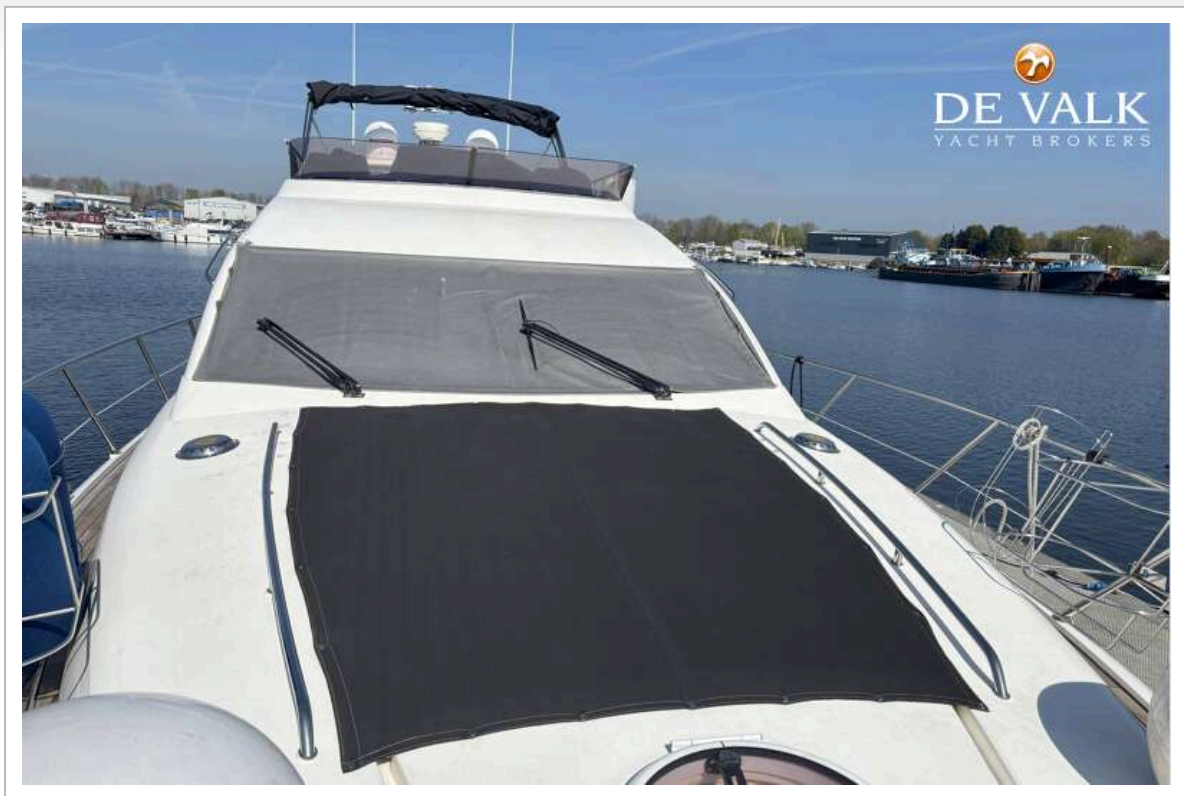


FAIRLINE PHANTOM 46





FAIRLINE PHANTOM 46



FAIRLINE PHANTOM 46

