



## OUTREMER 50 STANDARD

# OUTREMER 50 STANDARD

## BROKER'S COMMENTS

The 1990 Outremer 50 is a timeless catamaran that effortlessly combines speed, comfort, and safety. Designed for long-distance sailing, this seaworthy multihull offers the perfect balance between sporty performance and living space. Its sleek design, lightweight construction provide excellent sailing characteristics, while the spacious, light-filled interior offers ample comfort and practical solutions. With solid build quality and proven reliability on ocean passages, "Menja" is an ideal choice for adventurous sailors who value both comfort and performance during their extended voyages at sea

*Reinier van der Wolf*

## SPECIFICATIONS

<b>Dimensions</b>	15.24 x 7.80 x 1,15 / 2.50 (m)	<b>Builder</b>	Atelier Outremer, Grande Motte
<b>Built</b>	1990	<b>Cabins</b>	4
<b>Material</b>	GRP	<b>Berths</b>	8
<b>Engine(s)</b>	2 x Vetus M445S---A diesel	<b>Hp/Kw</b>	2 x 42.00 (hp), 30.91 (kw)
<b>Asking price</b>	Under Offer (VAT )	<b>Lying</b>	at sales office

## CONTACT

<b>Sales office</b>	De Valk Monnickendam B.V.	<b>Telephone</b>	+31 (0)299 65 63 50
<b>Address</b>	Hoogedijk 6 1145 PM Katwoude NL	<b>E-mail</b>	monnickendam@devalk.nl

## DISCLAIMER

These particulars are given in good faith as supplied but cannot be guaranteed.



# OUTREMER 50 STANDARD

## GENERAL

Model	OUTREMER 50 STANDARD
Type	catamaran sailing yacht
LOA (m)	15,24
Beam (m)	7,80
Draft (m)	2,50
Draft min (m)	1,15
Year built	1990
Builder	Atelier Outremer, Grande Motte
Country	France
Designer	Gérard Danson
Displacement (t)	9,4
Hull material	GRP
Hull colour	white
Hull shape	round-bilged
Keel type	lifting keel   daggerboards   zwaard borden   Schwerter
Deck material	GRP
Deck finish	non-skid paint
Dorades	Aironly (2020)
Deckhatch	All hatches have been removed and sealed, most of them both the frame and the glass part. There are some small hatches still original as they are not leaking. This has been done during the years 2019-2024. All outlocking windows of the saloon and on the outer hulls and the escape hatches replaced 2022.   Goiot
Fuel tank (litre)	polyethylene   2x 150
Level indicator (fuel tank)	for both tanks
Freshwater tank (litre)	polyethylene   400
Blackwater tank (litre)	polyethylene (2019)
Wheel steering	cable steering   2010 wheels replaced   stuurwiel   Steuerrad
Emergency tiller	and external customized emergency steering system
More info on hull	Monolithic GRP construction providing high resistance to impacts
More info on paintwork	hull and deck painted in 2-comp (2023)



# OUTREMER 50 STANDARD

**Extra info** Rudders with stainless steel, stocks replaced (2011) with removal of skegs to improve performance (2011)

**Extra info** Trampoline (2020)

## ACCOMMODATION

**Cabins** 4

**Berths** 8

**Layout** Up to 8 berths in 4 double cabins plus further 2 in the front on the starboard side. One WC room and one shower room in each hull. Entry is forward from the cockpit through sliding doors. Galley is to port, navigation area to starboard. Saloon with semi circular seating and central table is forward. Down steps to the port hull aft to a walkthrough with a door to a WC and in the back a cabin with inboard bed. Forward a walkthrough to a cabin with inboard bed, forward to a washroom/shower, forward to storage/workshop area. Bow compartment storage is accessed from a deck hatch. Down steps to the port hull aft to a walkthrough with a door to a WC and in the back a cabin with inboard bed. Forward a walkthrough to a cabin with inboard bed, forward to a washroom/shower, forward to storage and sail area. Bow compartment storage is accessed from a deck hatch.

**Floor** Teak & holly veneer flooring - (2010) (sanded & varnished: 2019)

**Saloon** yes

**Heating** diesel ducted hot air | 2x Planar 2D (2019)

**Heating 2** calorgas ducted hot air | Sunwind Miniflam (2021)

**Sink** stainless steel | 2x

**Cooker** calor gas | Smev | 3 burner - pits - Brenner (2010)

**Fridge** 2x large fridges 12v

**Freezer** Isotherm T31 12V/220V

**Hot water system** 220V + engine | boiler 22 l. (2019)

**Water pressure system** electrical

**Crockery** plates, glass, pans, tea and coffee maker, cutlery and div utensils

**Owners cabin** double bed | aft cabin SB | with Ikea spring mattresses

**Bed length (m)** 1,40 x 2,00 m



# OUTREMER 50 STANDARD

Toilet	yes
Toilet system	manual
Shower	yes
Extra info	USB outlets, 2   Heater outlet 1   Heater control panel starboard side   Control panel for bilge pump in starboard engine room   Led lamps for reading and overview.
Guest cabin 1	double bed   aft cabin PS   with Ikea spring mattresses
Bed length (m)	1,40 x 2,00 m
Toilet	yes
Toilet system	manual
Shower	yes
Extra info	USB outlets, 2   Heater outlet 1   heater control is for port side   Control panel for bilge pump in port side engine room   Led lamps for reading and overview   AC-outlet.
Guest cabin 2	double bed   mid cabin SB
Bed length (m)	1,40 x 2,00
Wardrobe	yes
Extra info	Led lamps for reading and overview.
Guest cabin 3	double bed   mid cabin PS
Bed length (m)	1,40 x 2,00
Wardrobe	yes
Extra info	Led lamps for reading and overview   AC-outlet
Extra info	besides the 4 cabins, also 1 sail area with 2 berths
Extra info	Complete refit in 2009-2010 with every component checked and a full internal overhaul with new cabinetry doors and teak flooring. Electrical system overhauled 2010-2011 with atl new cabling and connections Plumbing system overhauled 2010-2011 with atl new hoses, taps and fittings
Extra info	LED lighting in the whole interior

## MACHINERY

No of engines	2
Make	Vetus



# OUTREMER 50 STANDARD

Type	M445S---A
HP	42
kW	30.91
Fuel	diesel
Year installed	2023
Engine hours	200
Engine cooling system	freshwater heat exchanger
Drive	sail-drive
Engine controls	bowden cable
Exhaust	watercooled
Propeller type	folding   Flexifold (2023)
Propeller blades	3x (17"x14")
Manual bilge pump	4
Electric bilge pump	6
Electrical installation	refit in 2010 - 2011   12v   220v
Start battery	2x AMG 12v 105 Ah (2018)
Service battery	batteries joined in parallel to supply 800Ah @ 12vDC   4x AMG 200 Ah 12v Upower (2019)
Battery monitor	Victron BMV 700 (2015)
Battery charger	Quick SBC Advanced Plus 60 Amp Smart
Inverter	Smaller inverters are included as spares.   Power Jack LF 3 kW (2019)
Wind generator	with hybrid regulator   Silent Wind 400+ (2016)
Solar panel	with controllers   (2019 - 2023)
Shorepower	with cable   230vAC 50 Hz
Watermaker	1 tube, gives approx 40 litres an hour. Runs via inverter with a soft starter installed. The inverter gets too hot though and a bigger one is needed. The watermaker consists of a low pressure pump, filters, high pressure pump and a tube with a membrane. The membrane needs replacement before use.   BlueGold (2020)
Extra info	5 x 80 w fixed solar panels behind cockpit, 2019 3 x 120 w semi flexible solar panels, on saloon roof and on cockpit roof, 2020 2 x 100 w flexible panels, on saloon and on cockpit roof, 2023
Extra info	on each engine a 110a alternator



Extra info	Victron CYRIX-CT 12/24V-120A relays for separation of battery banks (2023)
------------	--

## NAVIGATION

Compass	yes
Depth sounder/log	Autohelm Tridata
Windset	Raymarine ST60 Wind
Repeater	yes
VHF	Icom IC-M323 (2019)
VHF handheld	2x
Autopilot	in cockpit - double stations - nav. station saloon   Raymarine Smart Pilot ST6002
Radar	Raymarine Quantum 2 (2019)
GPS	Autohelm
Plotter	Raymarine Axiom 9" (2019)
AIS receiver	with WiFi connection used with a navigation program   AIS TrueHeading (2019)
Radio receiver	Icom IC-7200 SSB with modem PACTOR (not used by owner, not verified function)
EPIRB	Globalfix 406Mhz GPS EPRIB 2015, not registered.
Navigation lights	yes
Extra info	Router 4g with external antenna, Teltonika RUT950 (2023)
Extra info	Iridium GO installed (not used for several years, not verified function)

## EQUIPMENT

Bimini	Stainless steel bimini arrangement 2011 + hard top (2023)
Cockpit cushions	yes
Cockpit table	"3rd table to put between the other two to make a long table   2x
Boarding ladder	yes
Deck shower	yes
Anchor	Rocna   33 kg. (2019)



# OUTREMER 50 STANDARD

Anchor chain	+/- 50 m. (8 mm)
Anchor 2	yes
Windlass	electrical   Lofrans Cayman 88
Dinghy	Zodiac 340 (2012)
Outboard	electric + upower AGM battery with 220 v charger (2023)   MinnKota Endura Max (2023)
Davits	yes
Life raft	container   Plastimo Transocean (2018)
Life raft (pers)	6
Last life raft survey	Repacked 2023, next time 2026
Lifejackets	gas cartridge need to be changed   2x
Safety harness	2x
Lifebuoy	1x
Fenders	yes
Mooring lines	yes
Spare parts	1 complete rudder, 1 autopilot arm (tested in 2024), 1 smart autopilot Raymarine SPX10 and a replacement electronic card, 1 smartpilot SPX10, 1 multipage ST60 Raymarine Display, 1 Raymarine ST60 close hauled wind, instrument display, 1 extra VHF station, Filters for the engines, enough for next oil change and diesel filter change, 2 impellers for the engines, 1 rope cutter, extra canvas, plastic windows, velcro, etc (plan was to cover the whole cockpit). 1 big canvas, which we believe is for covering the boat, never used by owner. 1 extractor bin for oil and water, several reserve winch handle in metal, spares for Jabsco toilets, spares for Goyot hatches, 2 large boxes of tools for almost everything, shackles, blocks, ropes, cables, grease, paint etc... full equipment for the kitchen, glasses, plates, pans, all we needed, towels and bed linen, 1 dehumidifier, 1 vacuum cleaner type industrial, diving equipment, spare rudder, 1 long ladder for going ashore in difficult places, 1 cable for shore power, Several adapters for different shore power outlets, Long ordinary AC cables,
Tools	yes
TV	LG 32 (2019)
Radio-cd player	Pioneer stereo system



# OUTREMER 50 STANDARD

Cockpit speakers	waterproof
Speakers in salon	yes
Clock - barometer	yes
Fire extinguisher	6x
Latest extinguisher survey	need to be checked
Extra info	Anchoring systems revised 2011 with new chain guide, chain peak.
Extra info	Magna Calor Gas Grill (2023)   Fire blanket   Sunbrella mainsail stackpack
Extra info	Fishing equipment, vacuum cleaner

## RIGGING

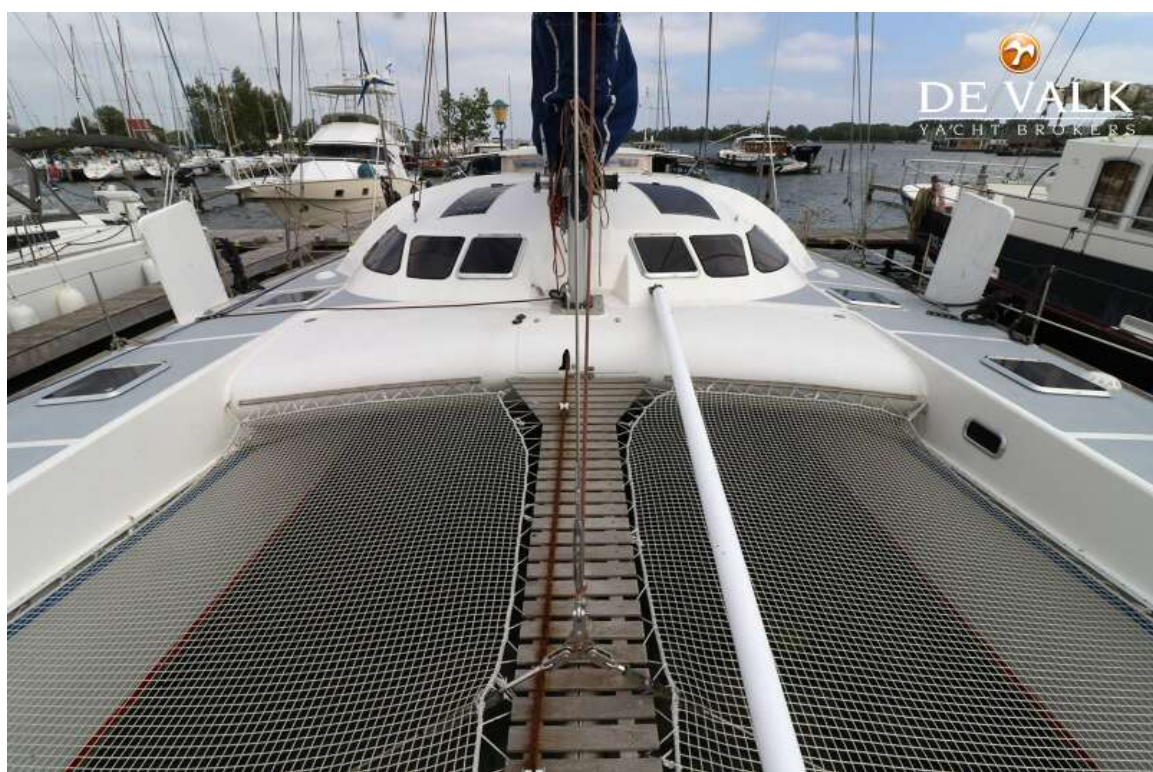
Standing rigging	wire   2023 (except front wire)
Brand mast	Sparcraft
Material mast	aluminium
Spreaders	single set of three-way spreaders
Battcars	Facnor (2024)
Fully battened mainsail	Ulman Sails Fibercon Pro Hybrid (2015)
Genoa	Ulman Sails Fibercon Pro Hybrid genoa (2015)
Genoa furler	Profurl
Gennaker	on Profurl furler   Osen Sails
Staysail	Neil Pryde Dacron (2010)
Stormjib	Hood
Secondary sheet winch	1x Antal 2245T   1x Lewmar (electric)     2x Antal
Genoa sheetwinches	2x Antal 2265T
Halyard winches	at mast   2x Harken 48 ST > 1x Harken 44ST
Spi-pole	carbon
Extra info	mast foot replace (2023)



# OUTREMER 50 STANDARD



# OUTREMER 50 STANDARD



# OUTREMER 50 STANDARD



# OUTREMER 50 STANDARD



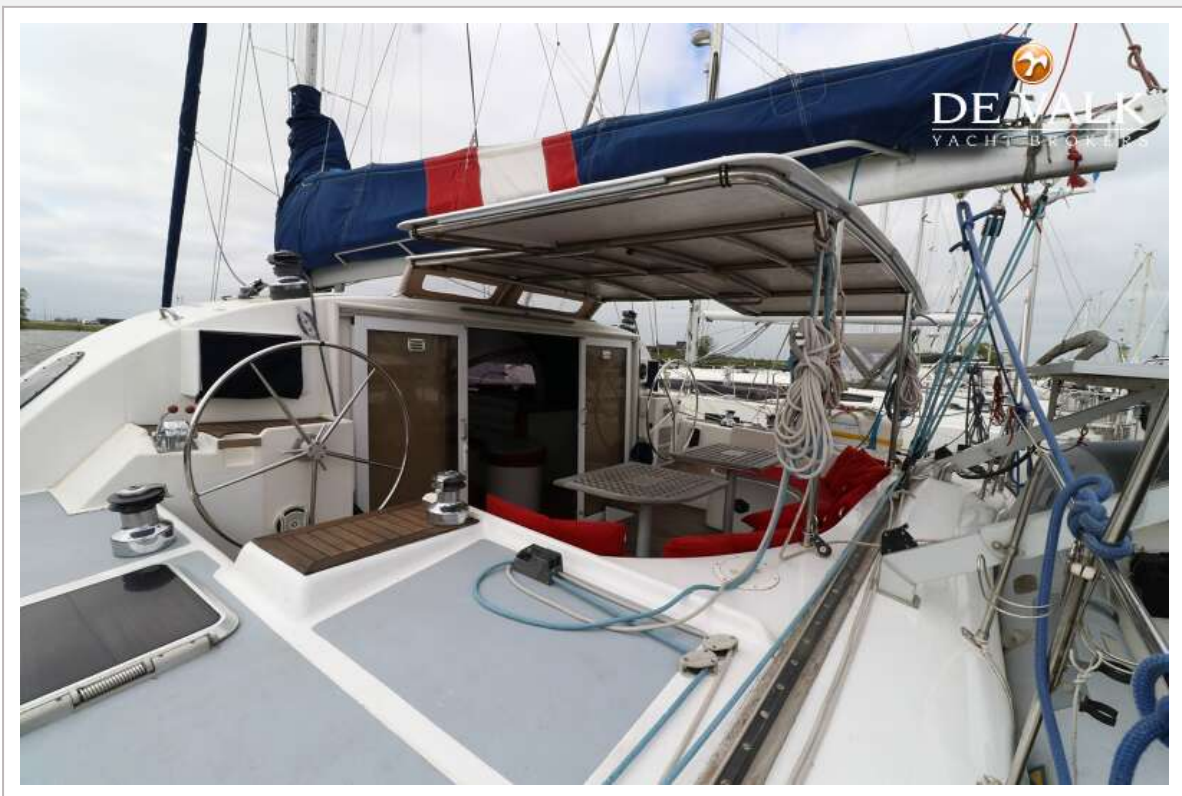
# OUTREMER 50 STANDARD



# OUTREMER 50 STANDARD



# OUTREMER 50 STANDARD



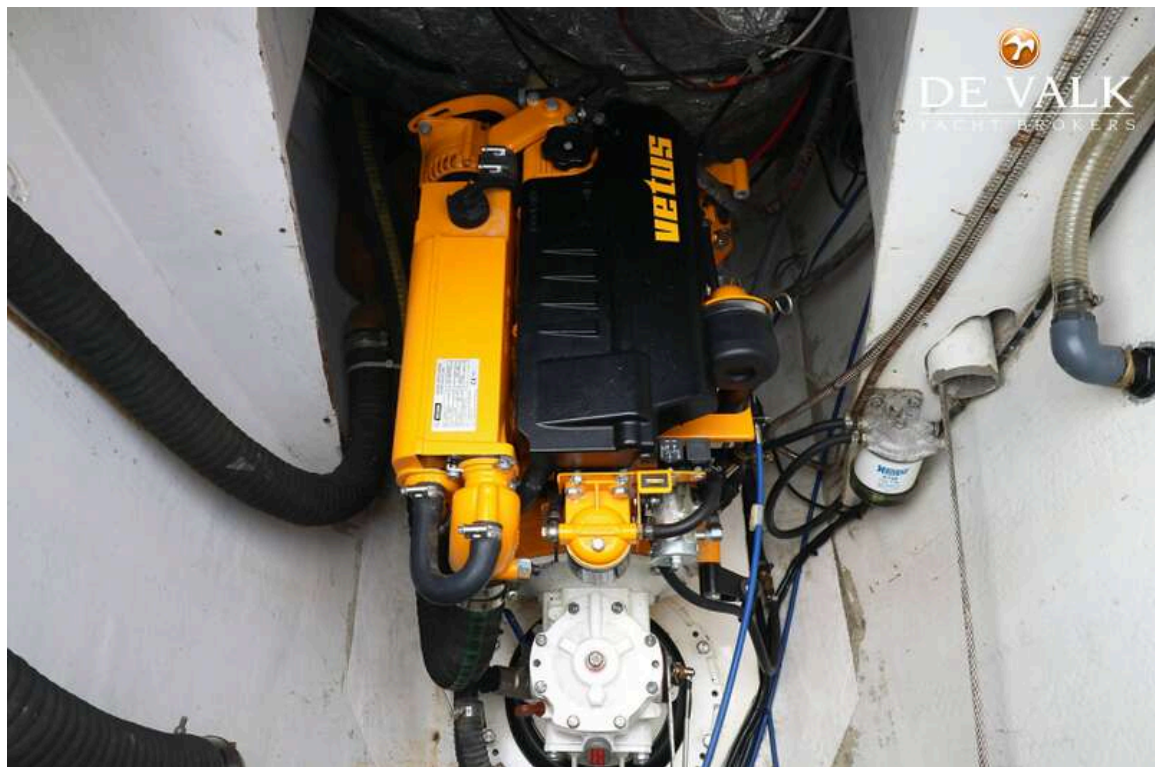
# OUTREMER 50 STANDARD



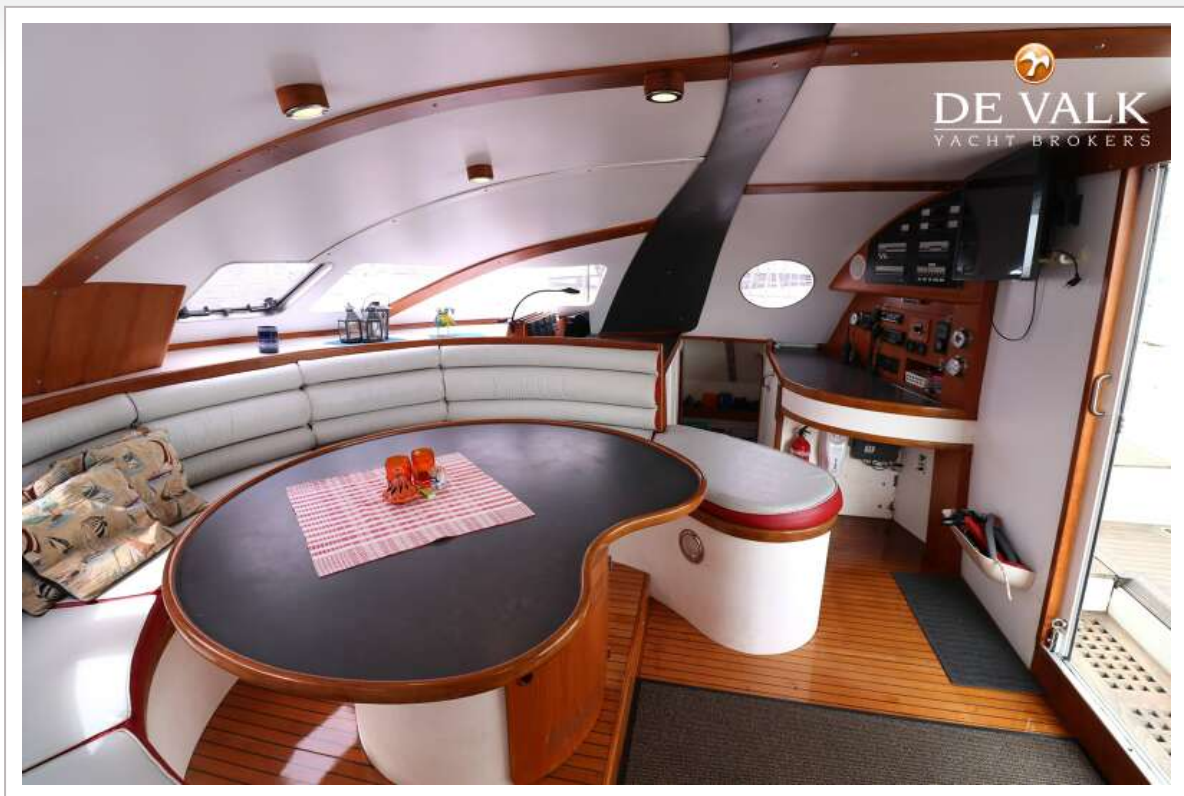
# OUTREMER 50 STANDARD



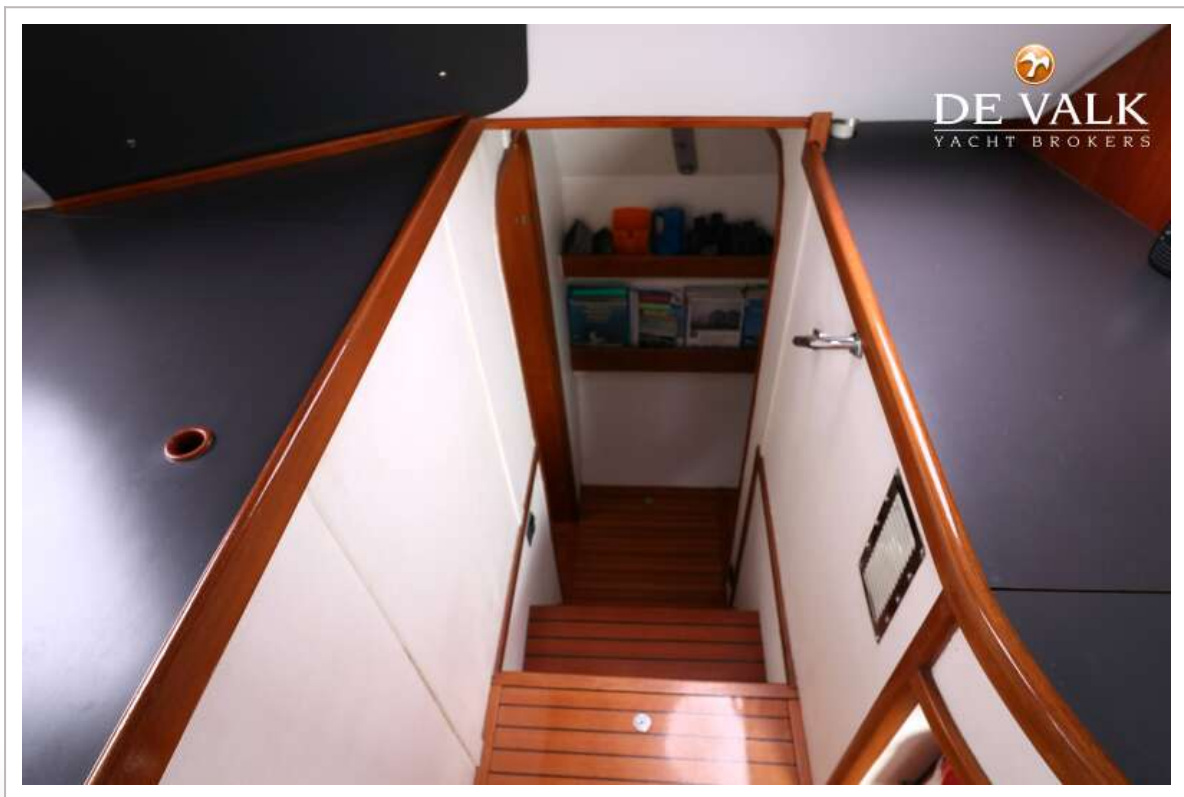
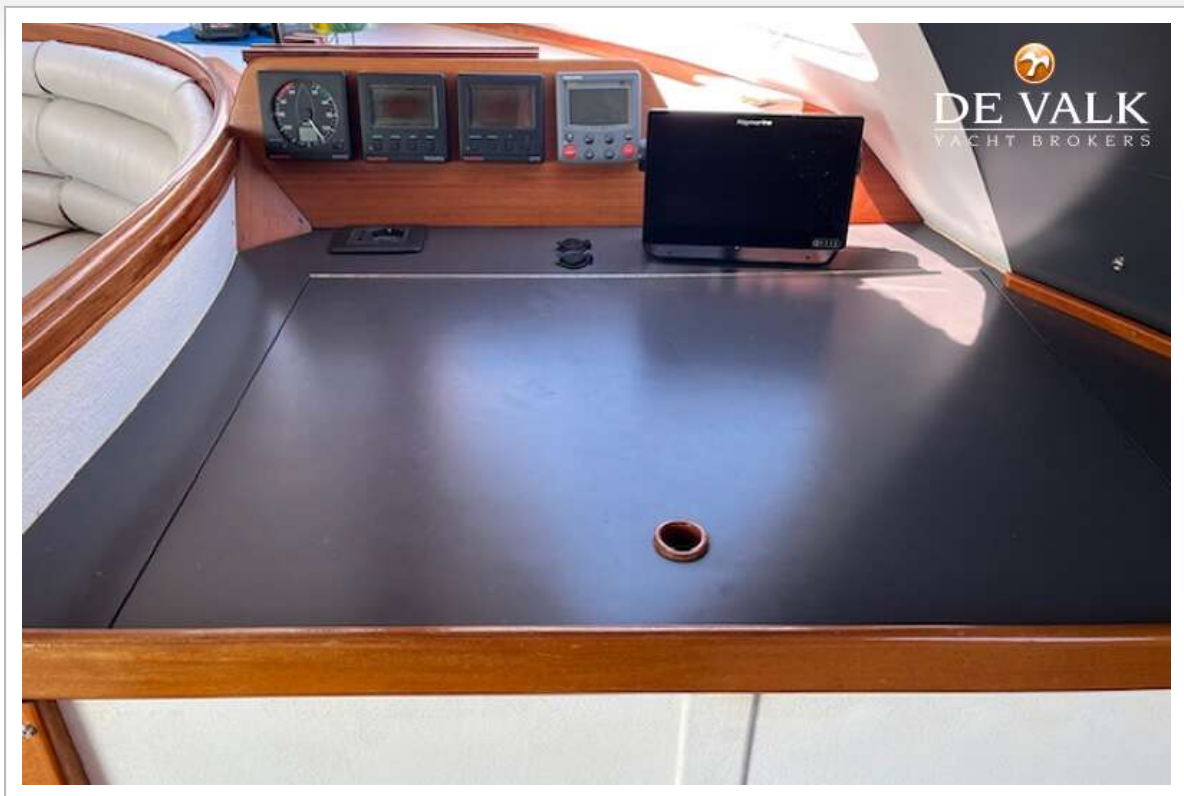
# OUTREMER 50 STANDARD



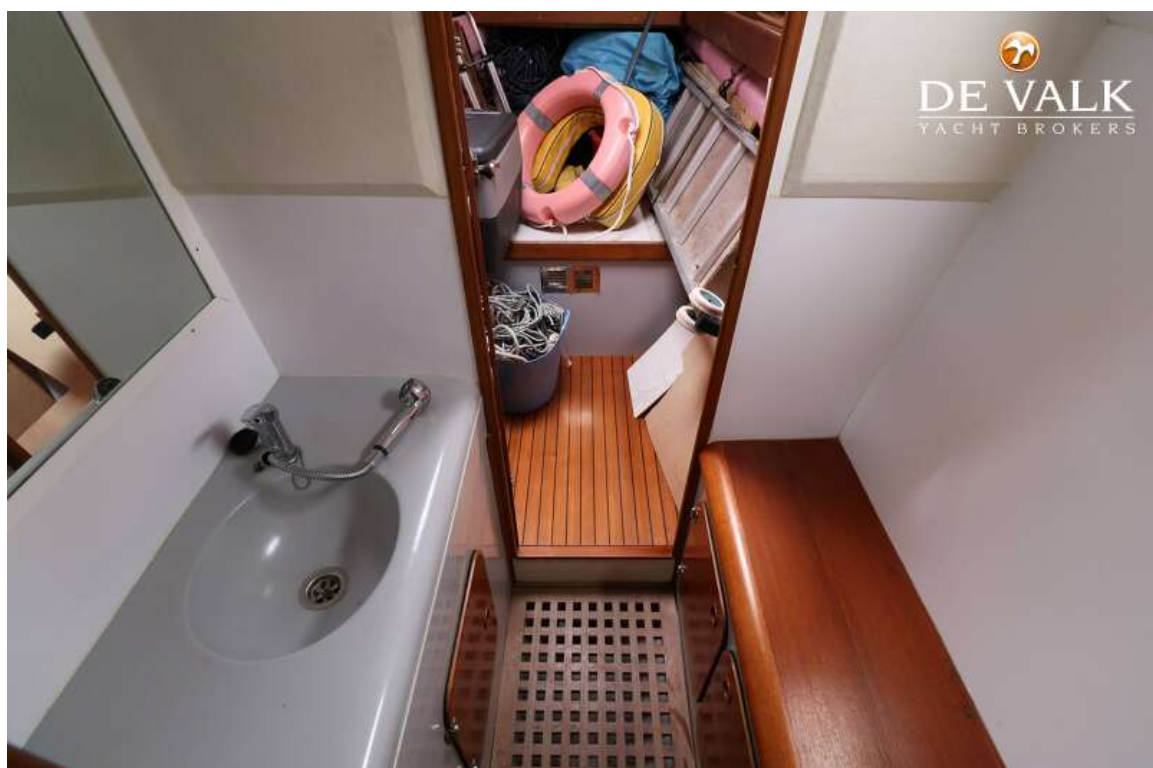
# OUTREMER 50 STANDARD



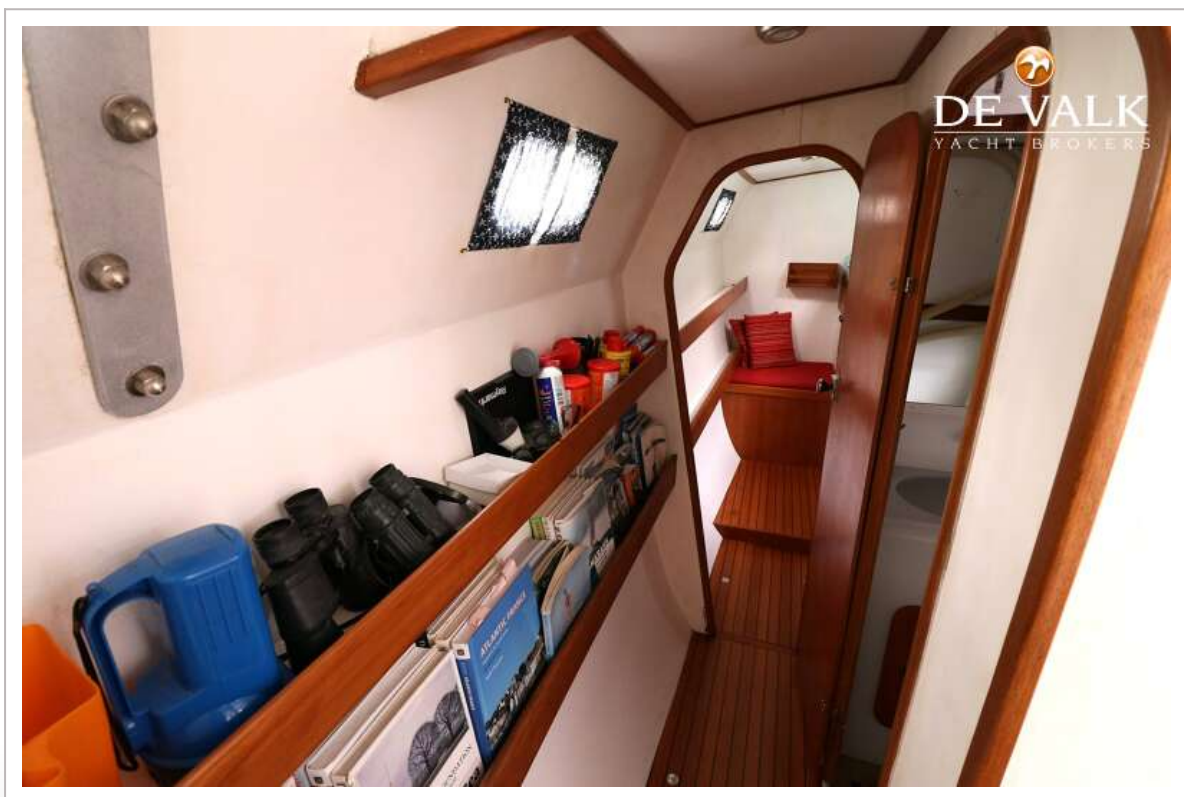
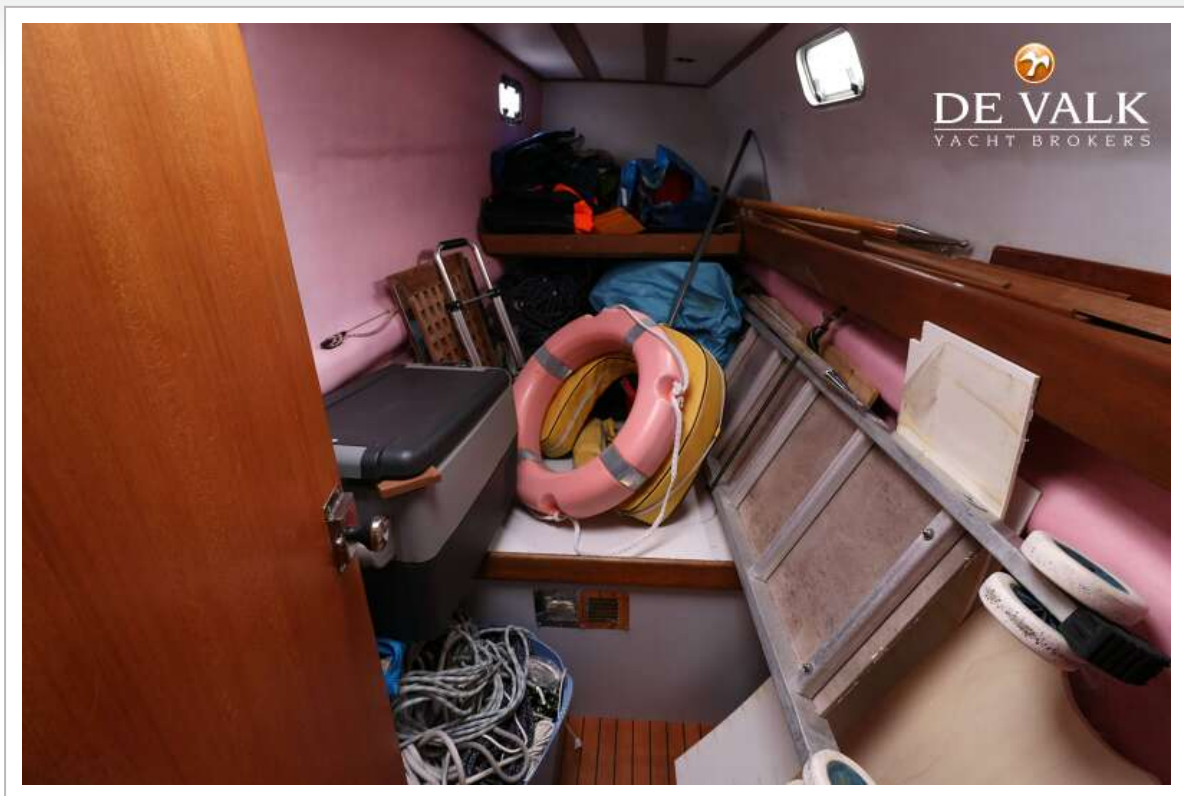
# OUTREMER 50 STANDARD



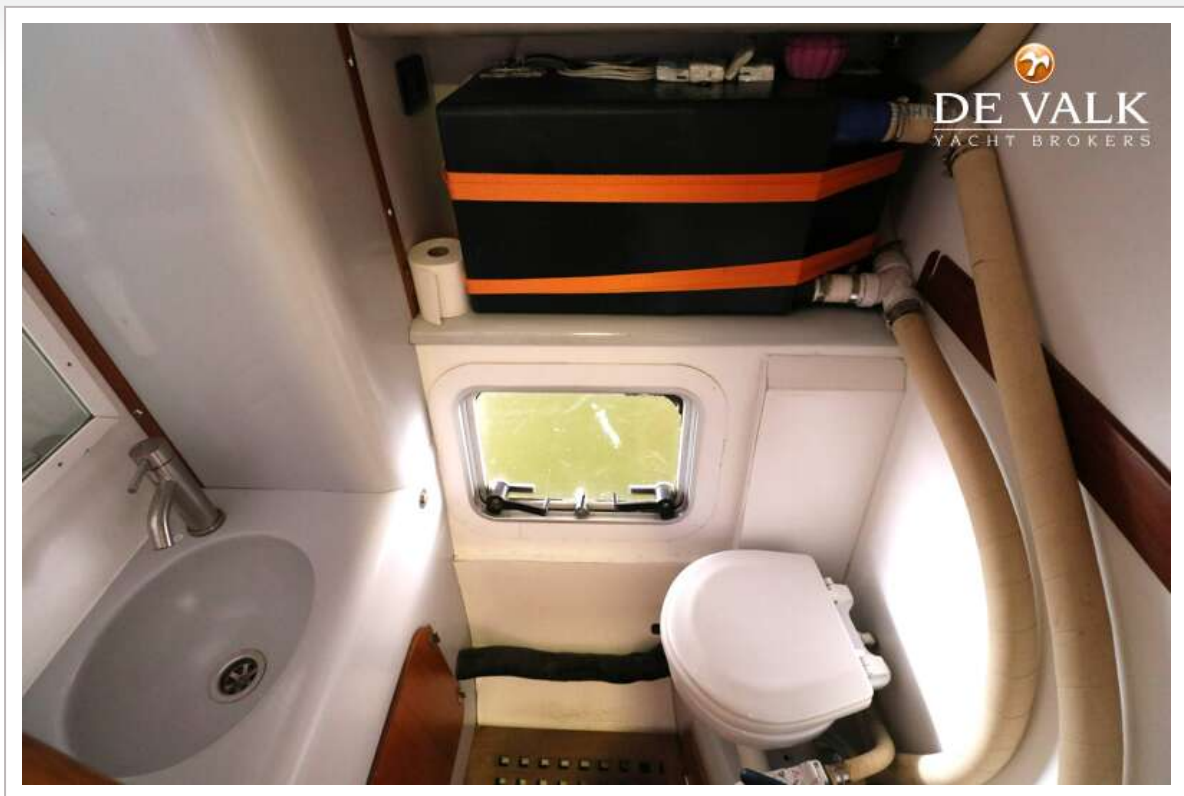
# OUTREMER 50 STANDARD



# OUTREMER 50 STANDARD



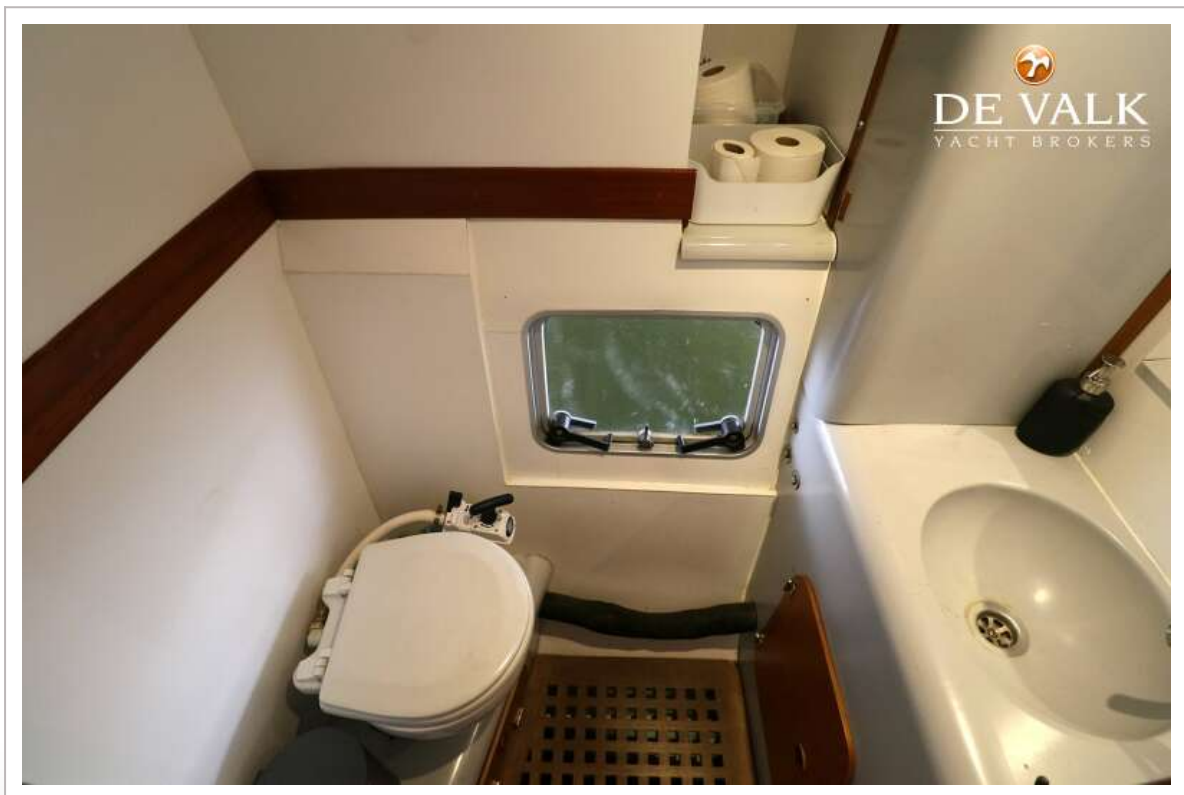
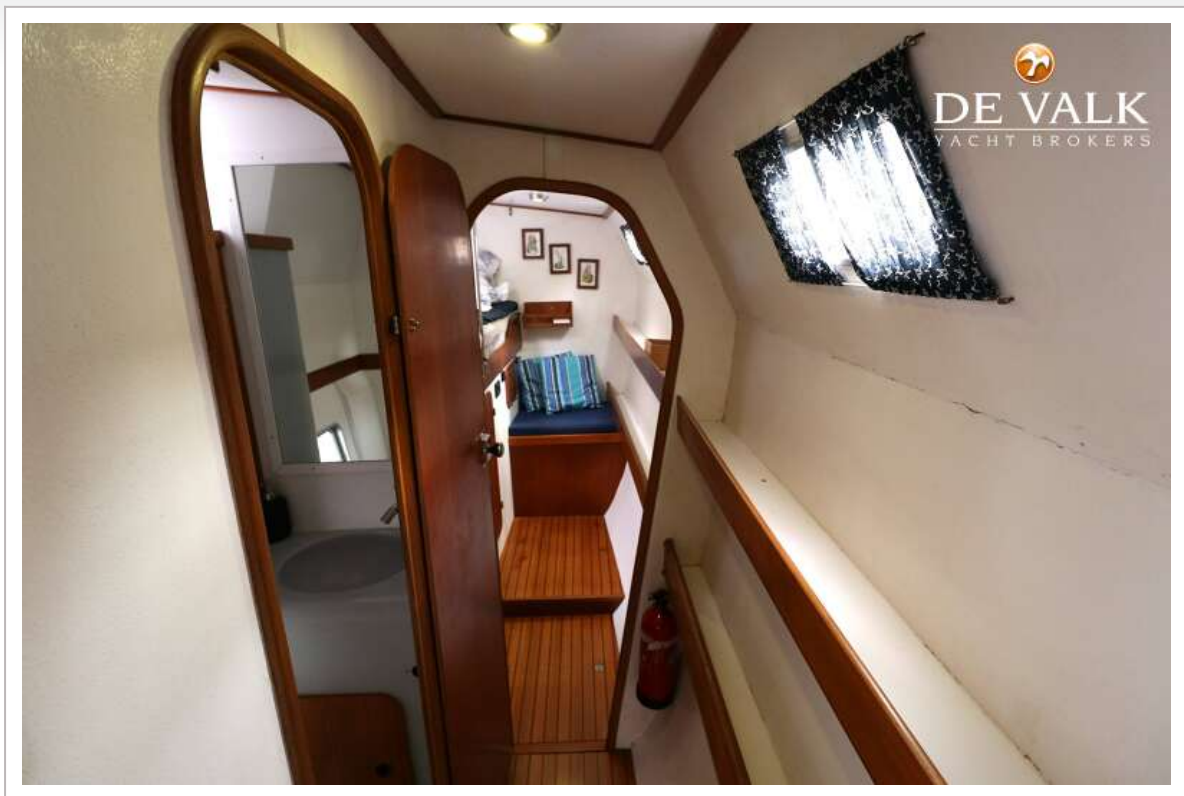
# OUTREMER 50 STANDARD



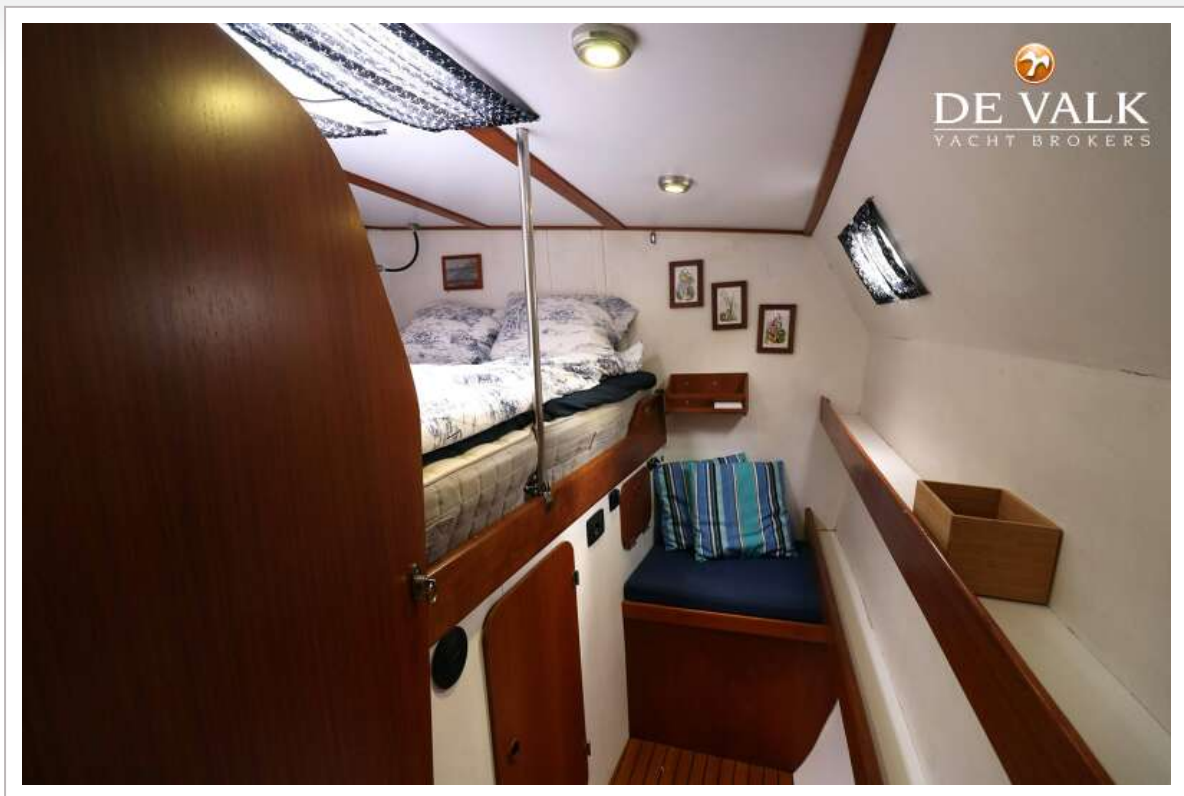
# OUTREMER 50 STANDARD



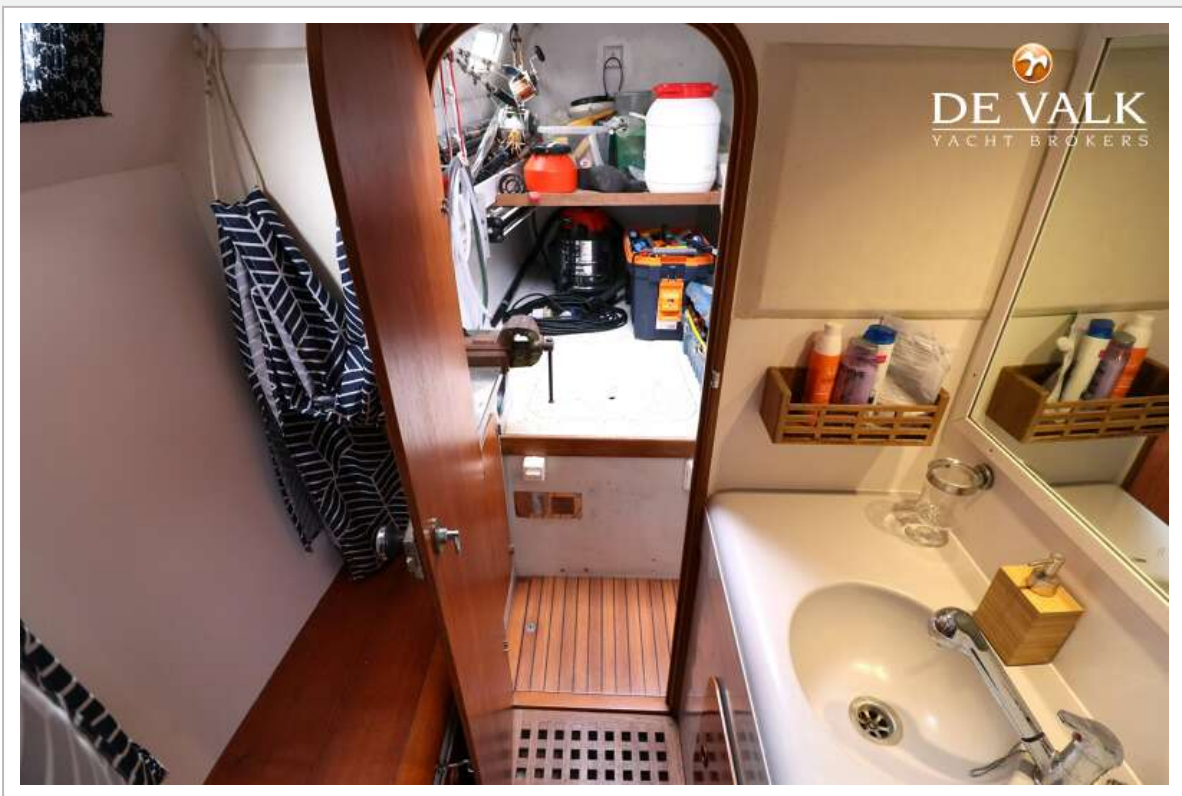
# OUTREMER 50 STANDARD



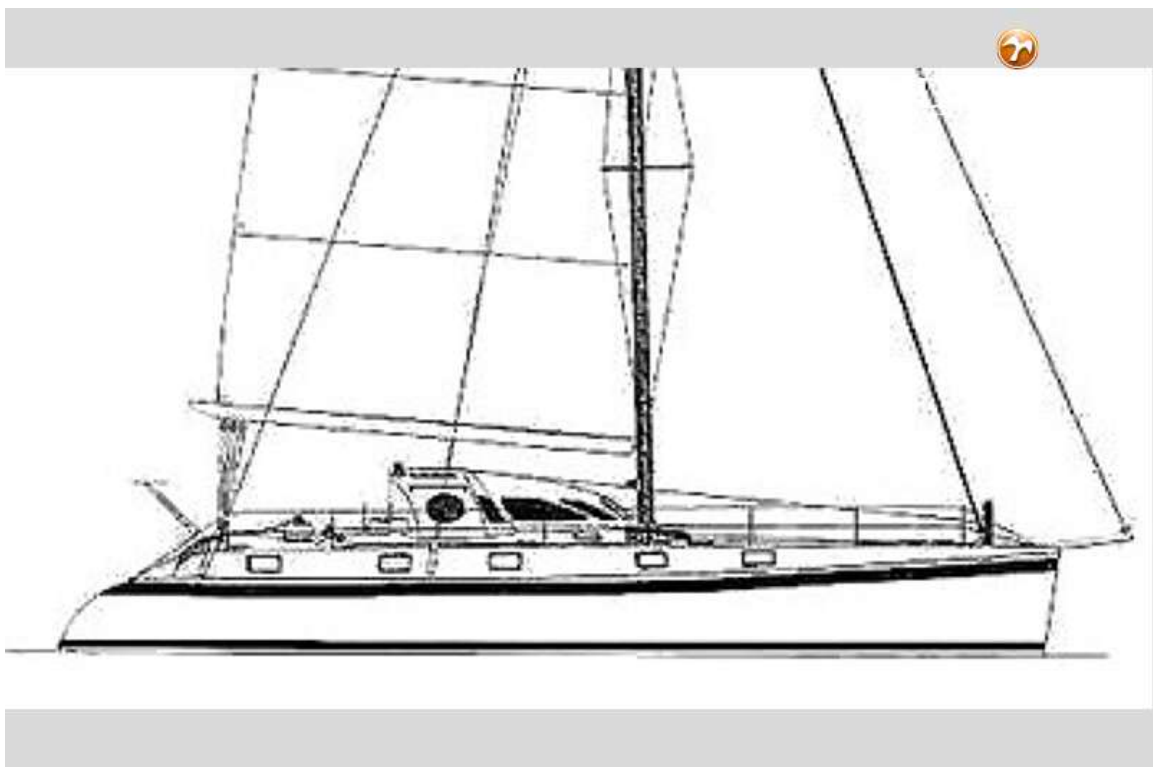
# OUTREMER 50 STANDARD



# OUTREMER 50 STANDARD



# OUTREMER 50 STANDARD



# OUTREMER 50 STANDARD

