



BRUCE ROBERTS SPRAY 40C



BRUCE ROBERTS SPRAY 40C

BROKER'S COMMENTS

How about this unique quirky and almost cocky 40ft Spray 40C? A solid, professionally built hull and engineering, and partially self-finished. Definite work to do for a next owner, but most is simple and purely cosmetic. The primal solidity and stability basically prevail. Be pleasantly surprised below and above deck by the truly incredible living space. Enjoy the view in the spacious deck saloon or from the comfort seats on the aft deck. A truly relaxed, delightful and safe world traveller with good cruising characteristics, low budget, no rush and very suitable for an adventurous couple.

Willem Koopmans

SPECIFICATIONS

Dimensions	11.86 x 4.45 x 1.37 (m)	Builder	Yacht Metal Boatbuilding / self built
Built	2011	Cabins	1
Material	Steel	Berths	4
Engine(s)	1 x Mercedes revised OM 602 5 cilind diesel	Hp/Kw	95.00 (hp), 69.92 (kw)
Asking price	Under Offer (VAT)	Lying	contact sales office

CONTACT

Sales office	De Valk Costa Blanca	Telephone	+34 96 50 21 569
Address	Costa Blanca Region 03730 Javea Alicante ES	E-mail	costablanca@devalk.nl

DISCLAIMER

These particulars are given in good faith as supplied but cannot be guaranteed.



BRUCE ROBERTS SPRAY 40C

GENERAL

Model	BRUCE ROBERTS SPRAY 40C
Type	sailing yacht
LOA (m)	11,86
Beam (m)	4,45
Draft (m)	1,37
Air draft (m)	16,75
Headroom (m)	1,95
Year built	2011
Launched	2012
Builder	Yacht Metal Boatbuilding / self built
Country	Poland
Designer	Bruce Roberts
Displacement (t)	15
Gross tonnage	15
Net tonnage	4
CE norm	NA
Hull material	steel
Hull colour	white
Hull shape	S-bilged Multi chine
Keel type	long keel
Bilge keels	yes
Superstructure material	steel
Rubbing strake	steel
Deck material	steel
Deck finish	teak 10 mm
Superstructure deck finish	non-skid paint
Cockpit deck finish	teak 10 mm
Antifouling (year)	2023
Dorades	yes
Window frame	aluminium



BRUCE ROBERTS SPRAY 40C

Window material	tempered glass
Deckhatch	yes
Portholes	yes
Insulation	yes
Fuel tank (litre)	steel 680, 3x tank
Level indicator (fuel tank)	BEP ultrasonic
Freshwater tank (litre)	stainless steel 1.200, 3x tank
Level indicator (freshwater)	BEP ultrasonic
Blackwater tank (litre)	100, approx.
Wheel steering	hydraulic Marsili
Inside helm position	yes
Outside helm position	yes
Emergency tiller	yes
More info on paintwork	Needs cosmetic attention, but nothing special
Extra info	Yacht is partly self built, no CE required

ACCOMMODATION

Cabins	1
Berths	4
Interior	ash
Floor	teak and holly Pvc laminate and
Open cockpit	yes
Pilot house	yes
Pilot house/deck saloon	With comfortable U seat
Saloon	Spacious "living" below deck
Headroom saloon (m)	1.95
Heating	Webasto CV via radiators, not used for years, needs check
Navigation center	yes
Chart table	yes
Aft Cabin	Massive, looks like in a 50 ft
Dinette	yes



BRUCE ROBERTS SPRAY 40C

Dinette to convert into berth	Possible
Opening door to aft deck	yes
Galley	yes
Countertop	Duropol
Sink	stainless steel 1 + 1/2
Cooker	calor gas 3 burner
Oven	yes
Gas alarm	yes
Microwave	yes
Fridge	Compressor and cooling box
Freezer	In fridge
Hot water system	220V + engine Boiler 30 ltr
Water pressure system	electrical
Manual and/or foot pump	Fresh water
Owners cabin	double bed
Bed length (m)	1.8 x 2
Wardrobe	All-over
Bathroom	en suite
Toilet	yes
Toilet system	manual
Wash basin	yes
Shower	en suite
Washing machine/dryer combi	Samsung Eco Bubble, 7 kg
Extra info	Typical 2 persons layout, but plenty of space for guest to sleep
Extra info	Never seen so much usable space on a 40 ft

MACHINERY

No of engines	1
Make	Mercedes revised
Type	OM 602 5 cilind
HP	95



BRUCE ROBERTS SPRAY 40C

kW	69.92
Fuel	diesel
Year installed	2011
Maximum speed (kn)	8
Cruising speed (kn)	6,5
Consumption (l/hr)	5
Range (nm)	850
Engine cooling system	freshwater heat exchanger
Engine controls	bowden cable
Exhaust	watercooled
Propeller type	yes
Propeller blades	3
Shaft lubrication	grease
Manual bilge pump	yes
Electric bilge pump	yes
Electrical installation	12/230
Batteries	yes
Start battery	12 Volt 110 Ah
Service battery	24 Volt 230 Ah
Battery charger/inverter	Victron Energy MultiPlus Compact; 24/1600/40
Solar panel	2 on side boards, massive space available on cockpit roof!
Shorepower	yes

NAVIGATION

Compass	Suunto D-135
Electric compass	On pilot
Depth sounder	2x Raymarine ST40
Windset	Raymarine ST60
VHF	Icom IC-M-421
Autopilot	Raymarine ST 6002 on SPX 30 computer
Wind vane steering install.	Hydrovane



BRUCE ROBERTS SPRAY 40C

Radar	Simrad 4G on R111 interface
GPS	Furuno GP32
Radar/plotter	Open CPN on computer and monitor
AIS receiver	yes
AIS transceiver	Easy TRX
Navigation lights	Hella

EQUIPMENT

Sprayhood	Perpex over entrance
Fixed hardtop	Massive space for solar panels
Cockpit cushions	yes
Cockpit chairs	yes
Bathing platform	yes
Boarding ladder	yes
Bow ladder	Easy step
Anchor	Kobra 35 kg
Anchor chain	80 mtr, 12 mm
Windlass	Lewmar
Outboard	4 hp Yamaha
Life raft	valise (or bag)
Life raft (pers)	4
Last life raft survey	Needs renewal survey
Fenders	yes
Mooring lines	yes
Spare parts	yes
Radio-cd player	yes
Clock - barometer	yes
Fire extinguisher	Needs data check
Extra info	Safe world traveller; with "a cup of tea" relaxed in your hands
Extra info	No sea condition will stop this vessel en route



RIGGING

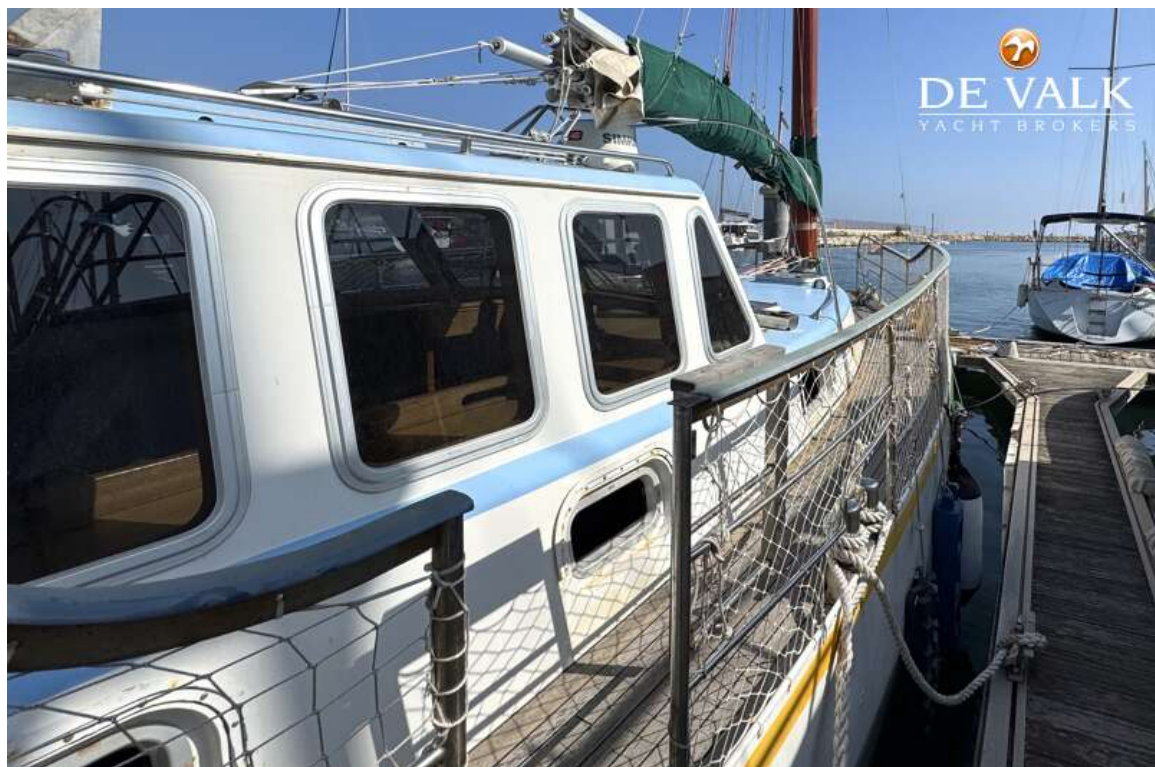
Rigging	Chinese lug Rig 2 mast system
Material mast	wood Laminated wood/epoxy re-inforced
Keel stepped mast	Seal needs check, small water leakage
Mainsail	50 m2 230-260 bg Dacron
Mizzen	40 m2, 230-260 bg Dacron
Extra info	Main mast 14 mtr, diameter 310 mm
Extra info	Mizzen mast 12,4 mtr, diameter 250 mm



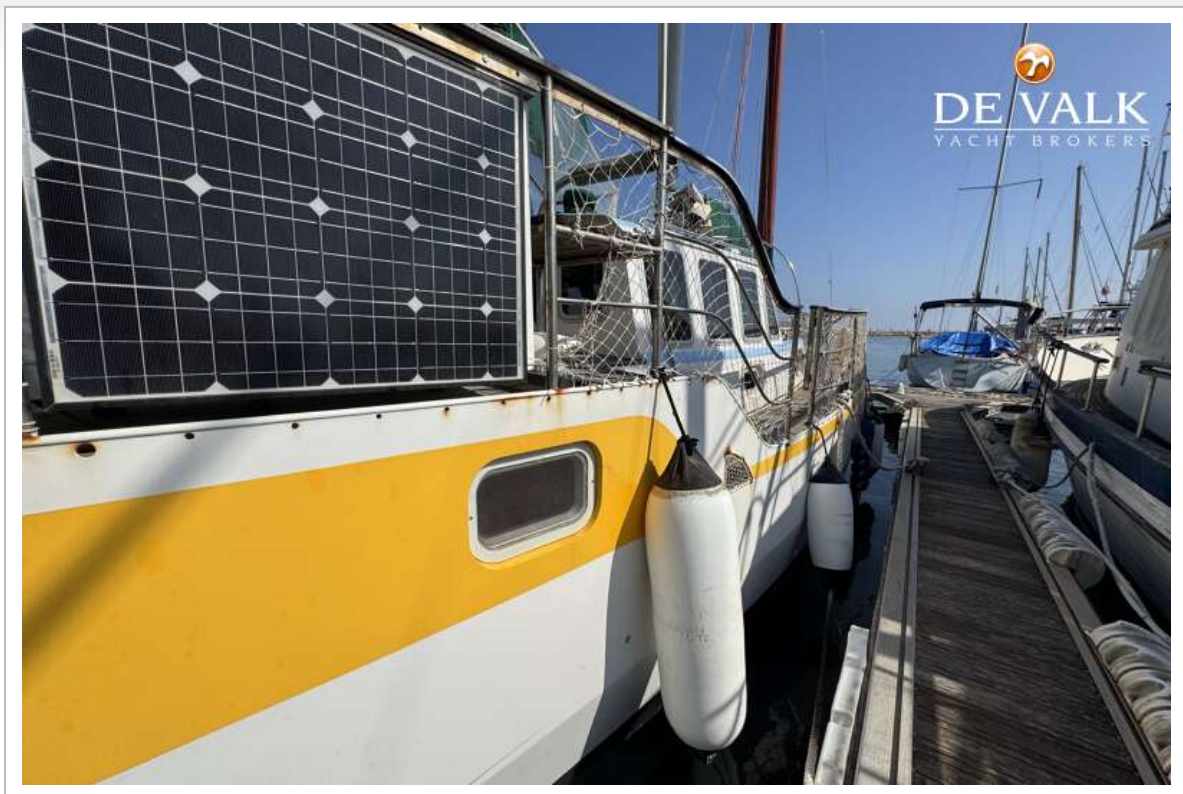
BRUCE ROBERTS SPRAY 40C



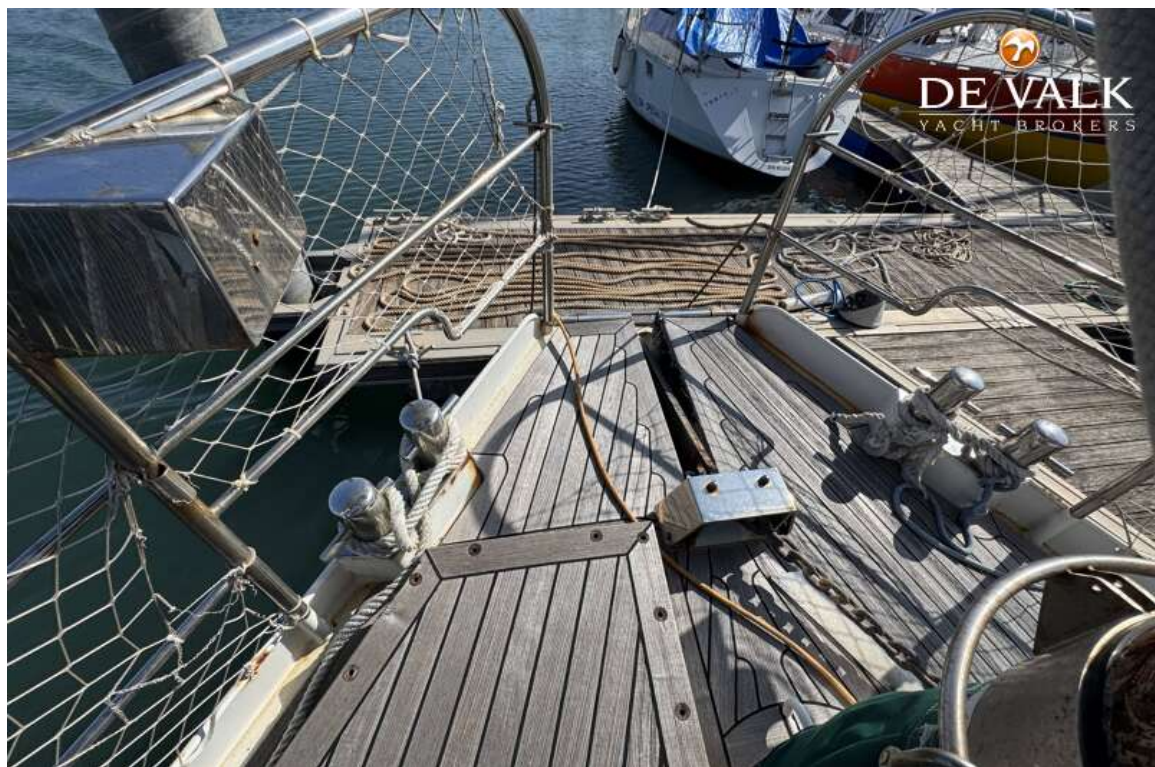
BRUCE ROBERTS SPRAY 40C



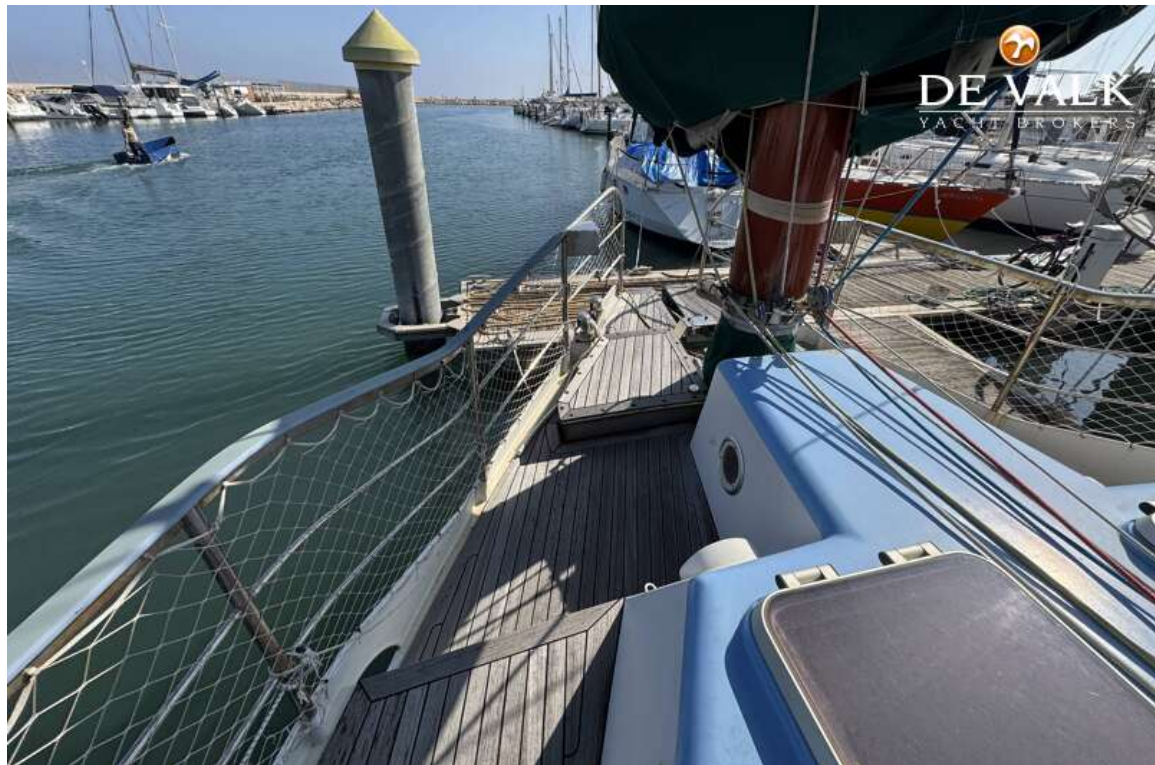
BRUCE ROBERTS SPRAY 40C



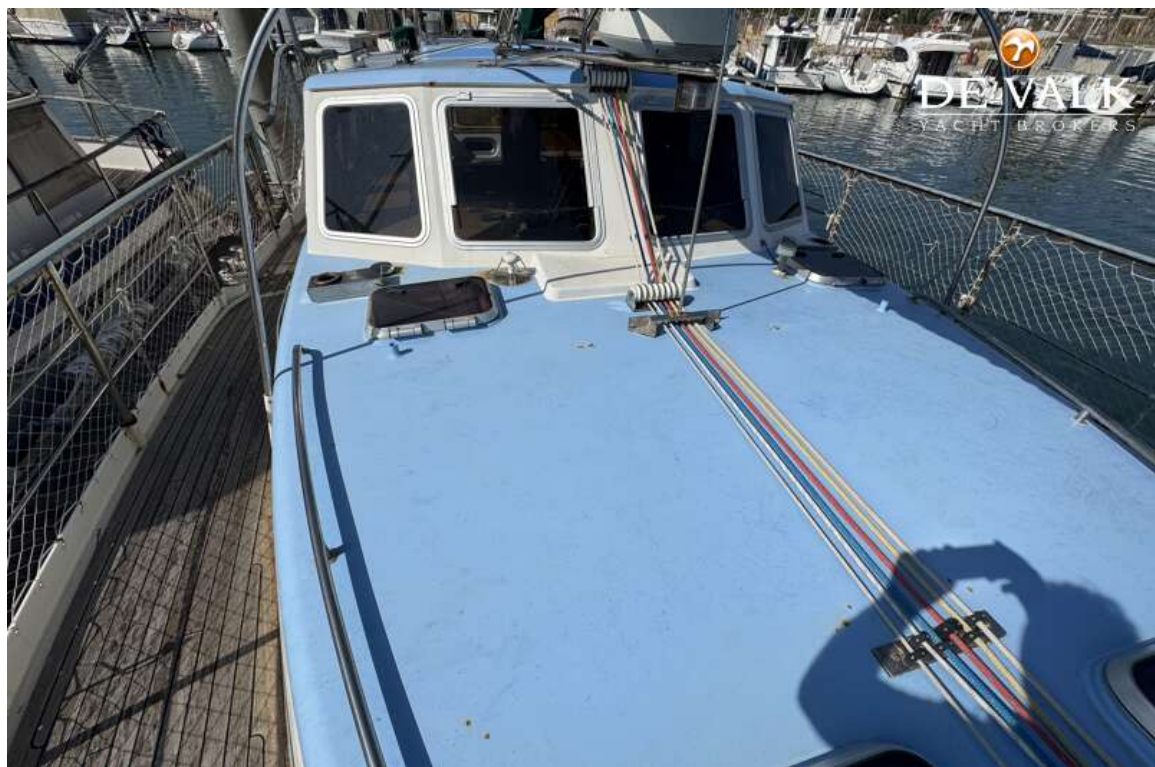
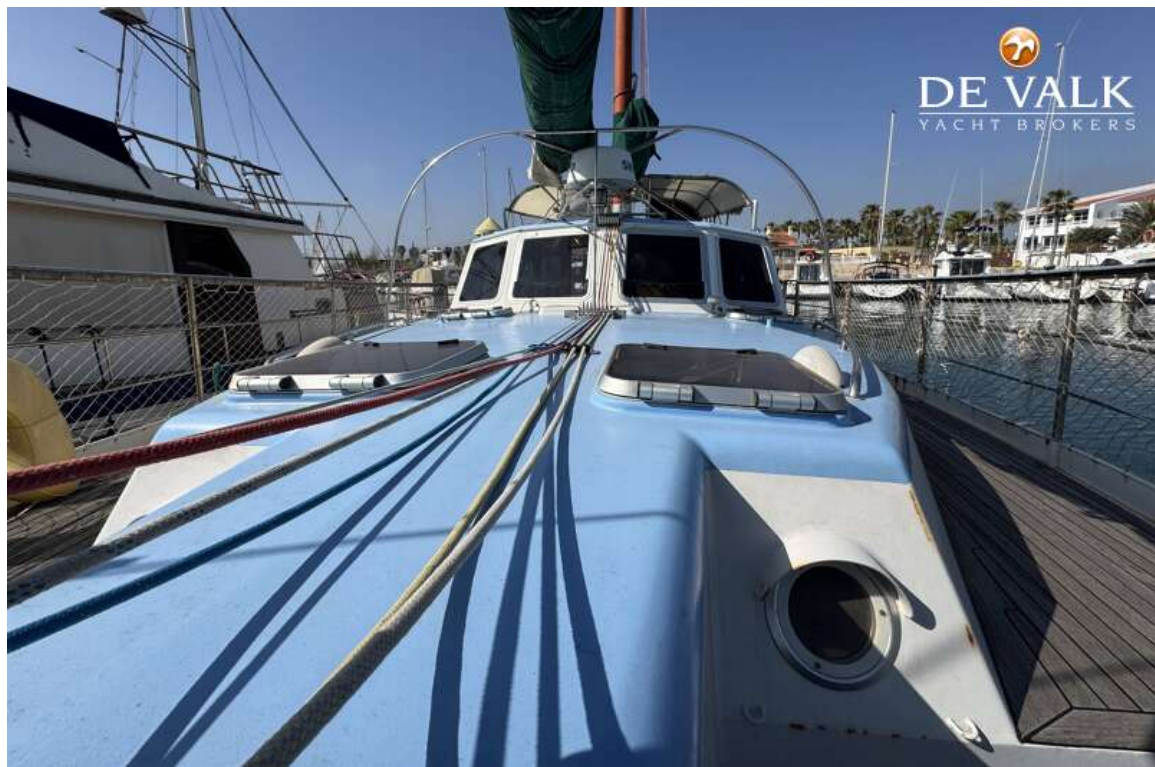
BRUCE ROBERTS SPRAY 40C



BRUCE ROBERTS SPRAY 40C



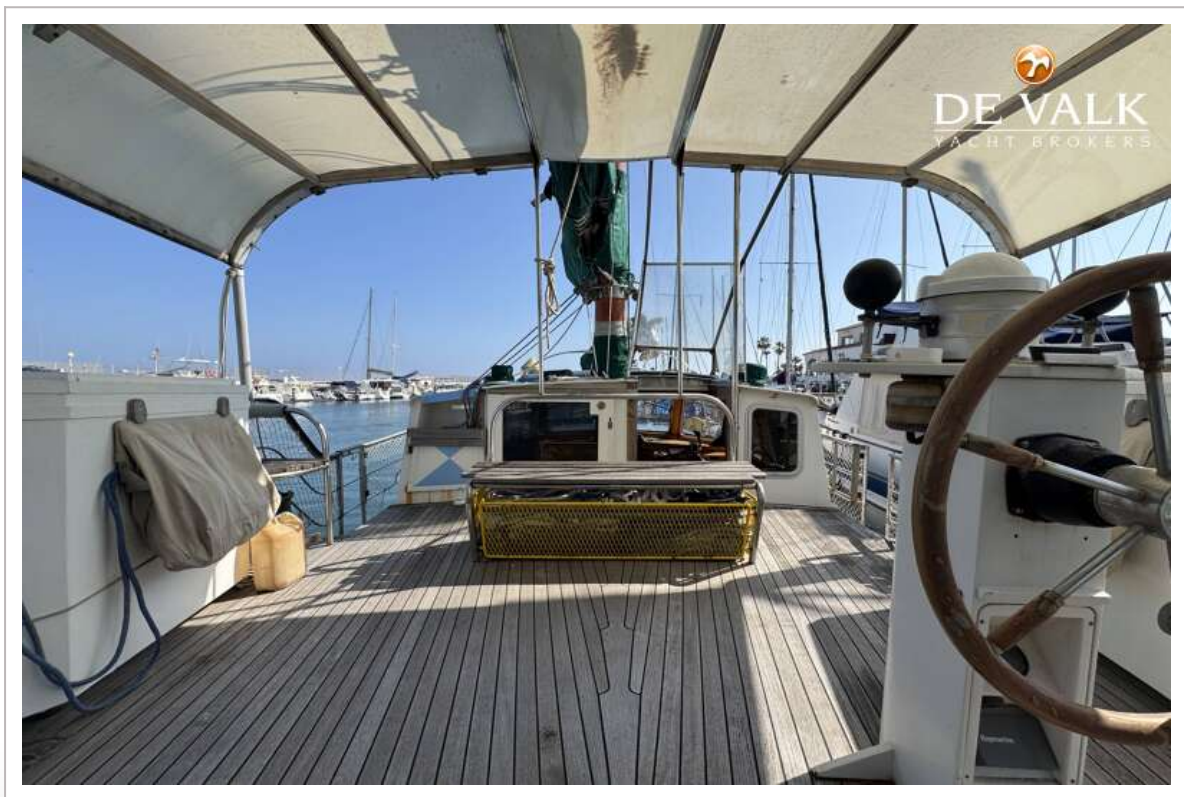
BRUCE ROBERTS SPRAY 40C



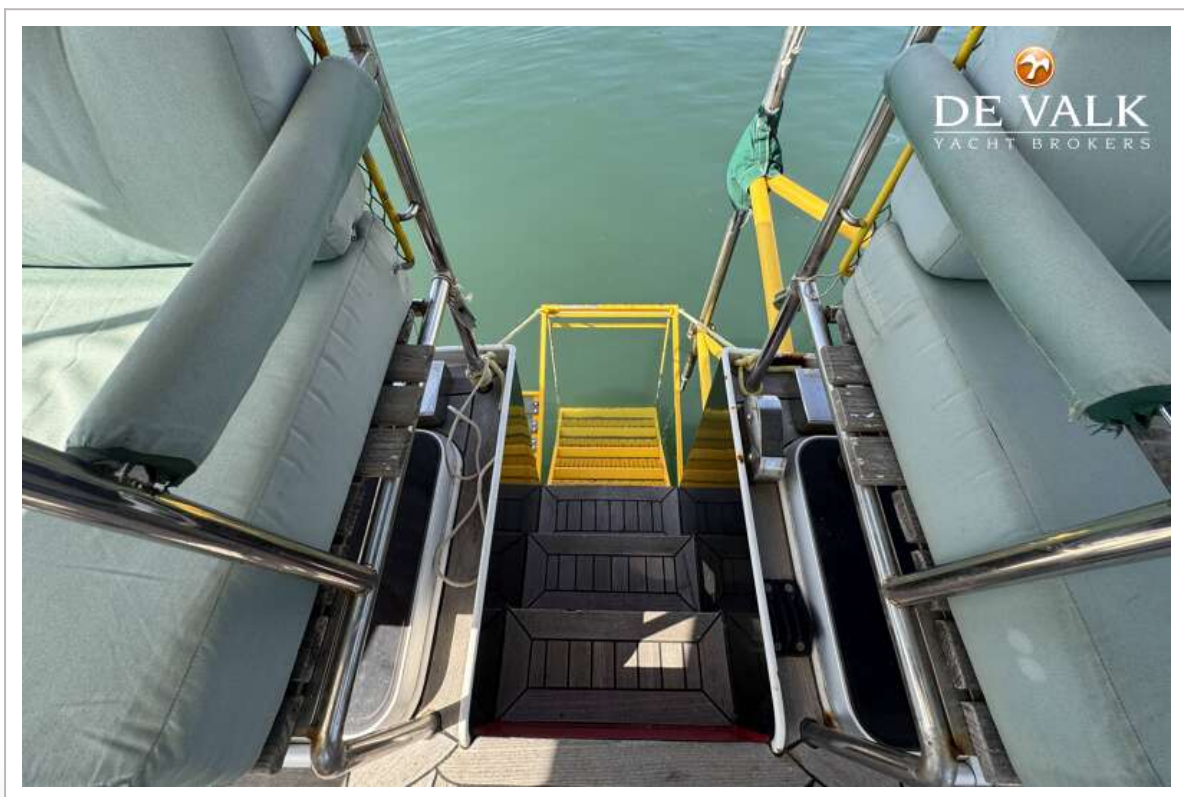
BRUCE ROBERTS SPRAY 40C



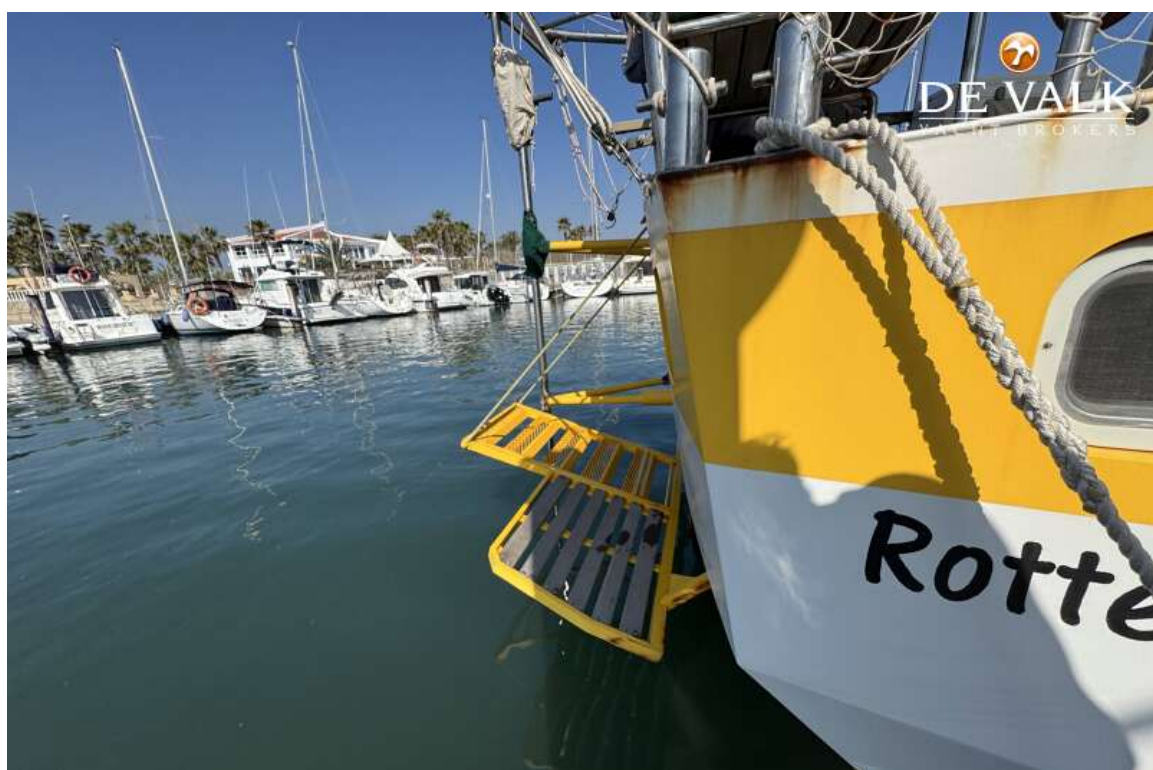
BRUCE ROBERTS SPRAY 40C



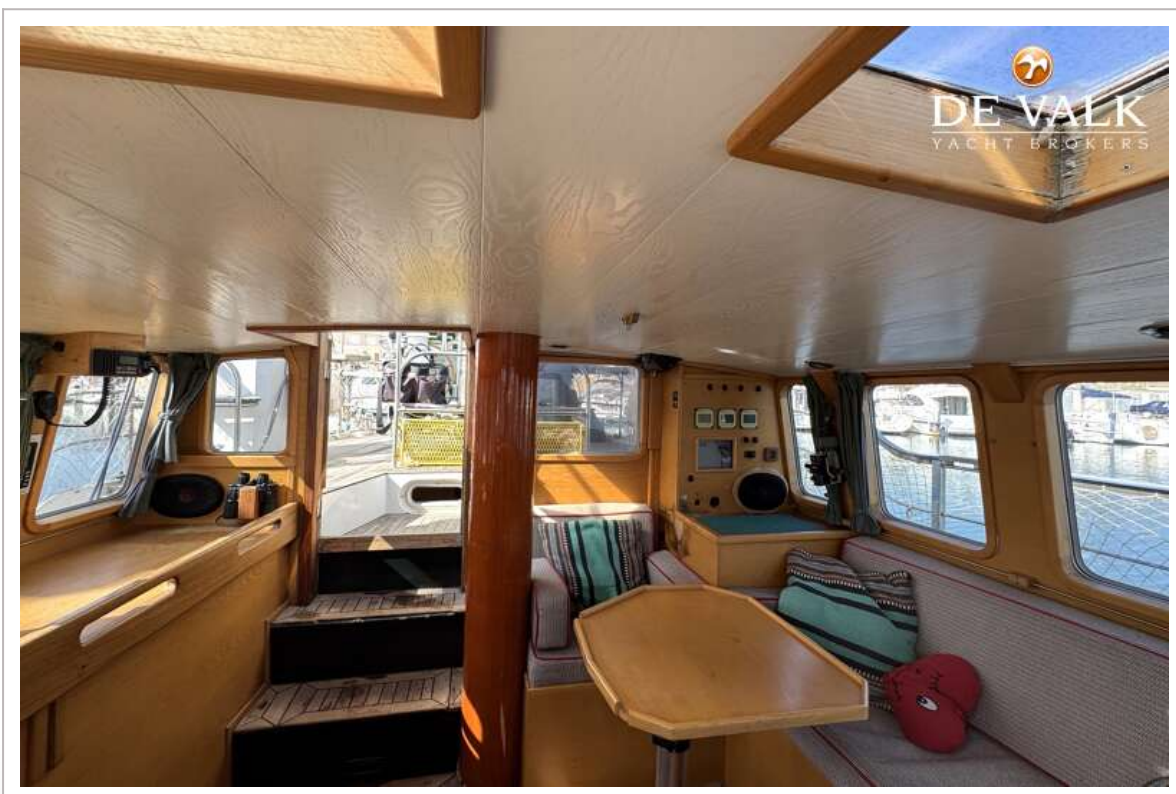
BRUCE ROBERTS SPRAY 40C



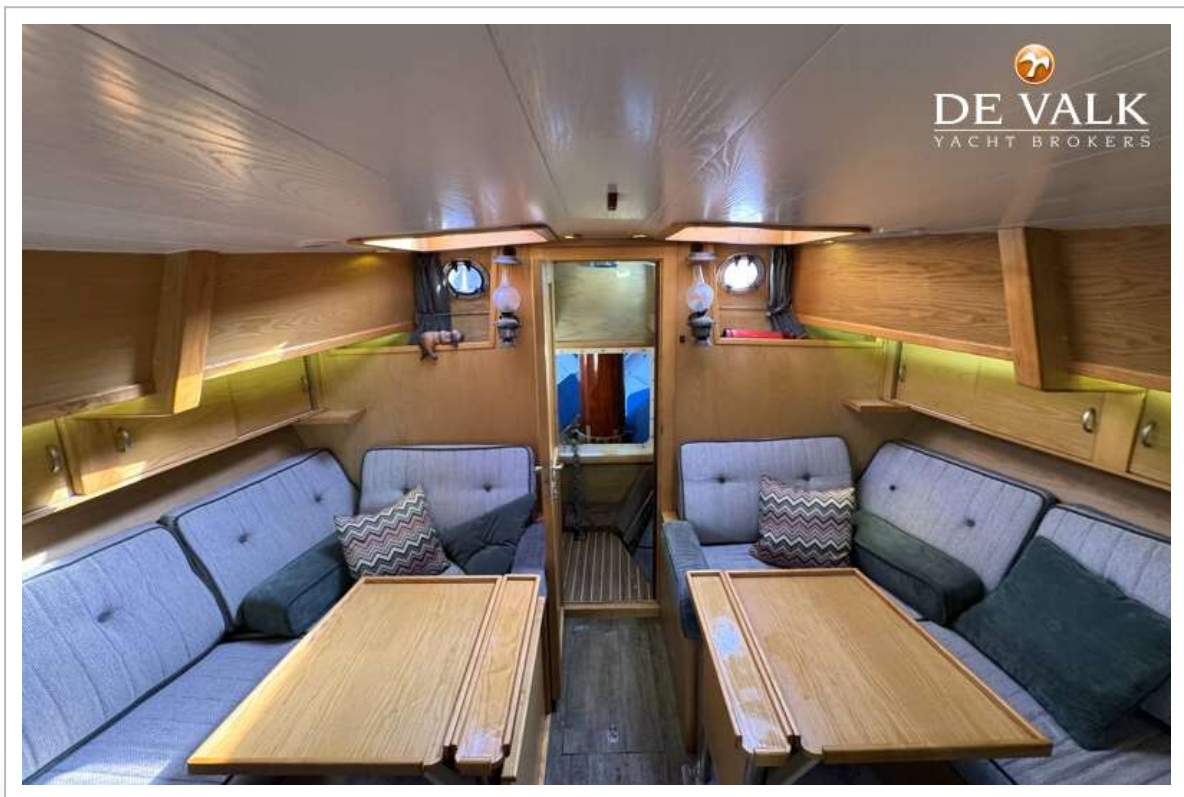
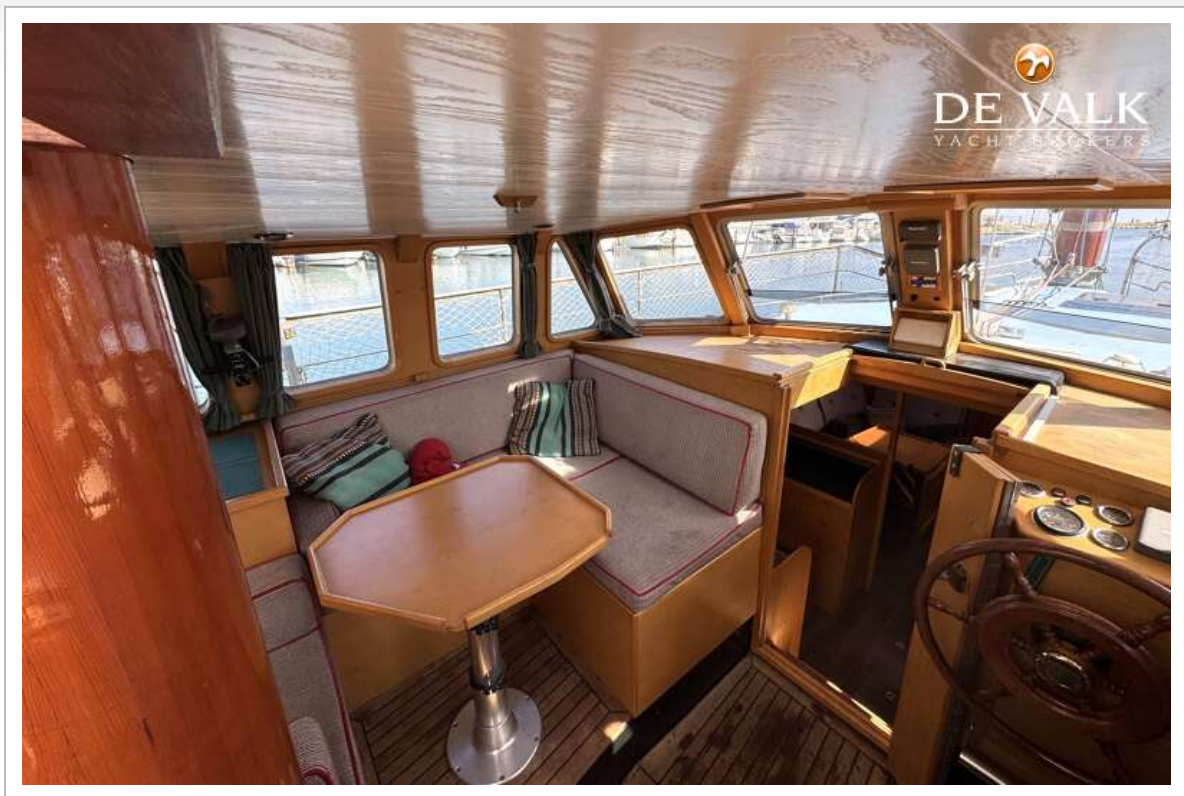
BRUCE ROBERTS SPRAY 40C



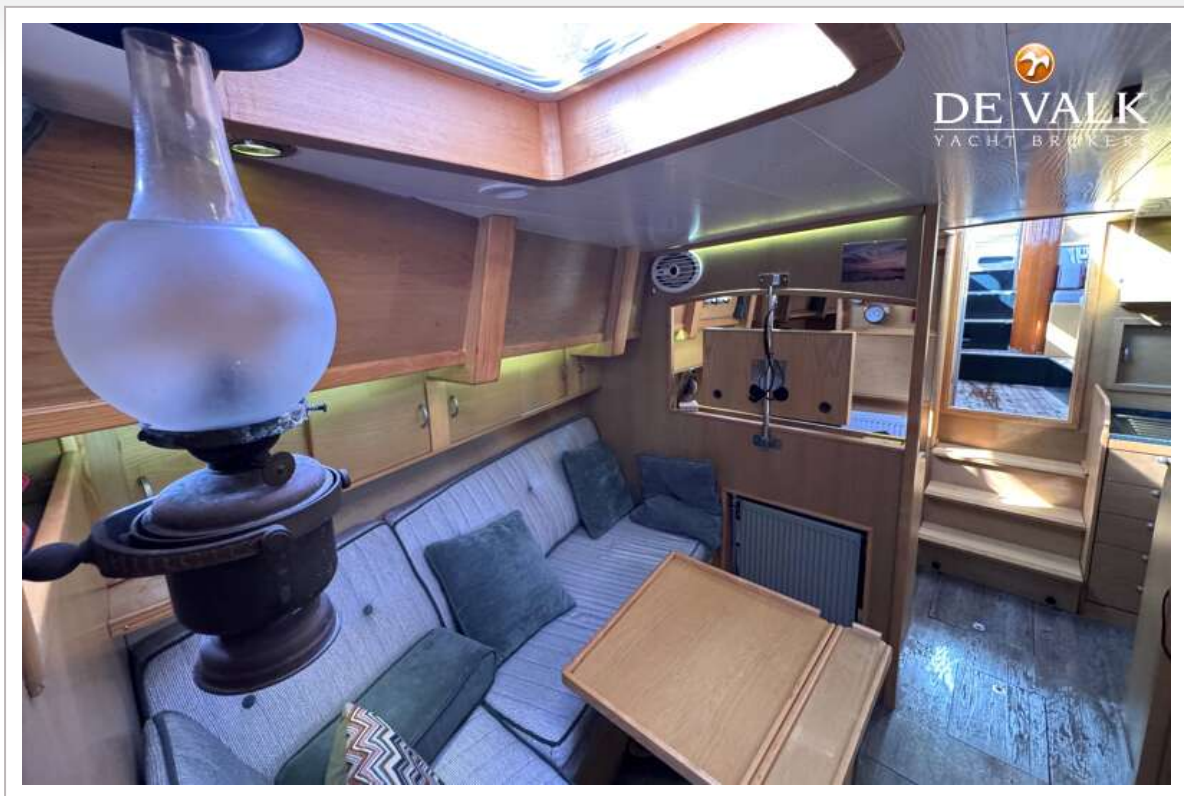
BRUCE ROBERTS SPRAY 40C



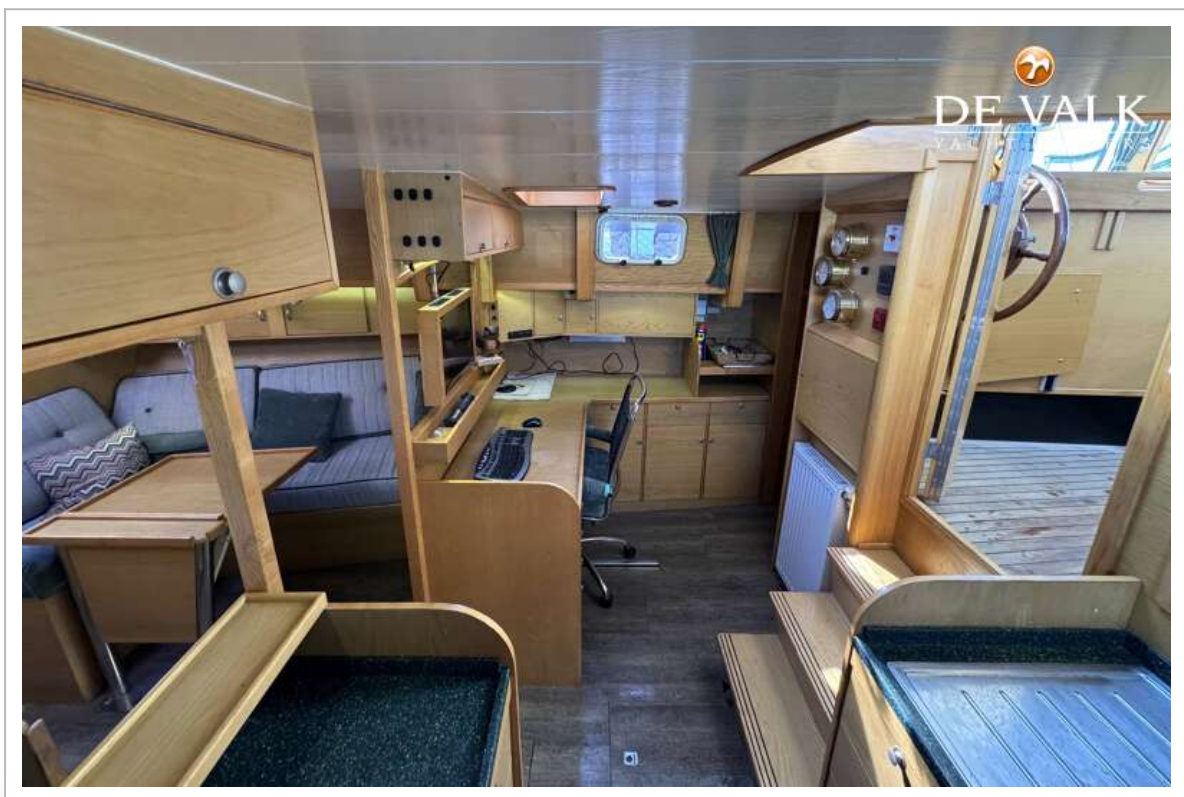
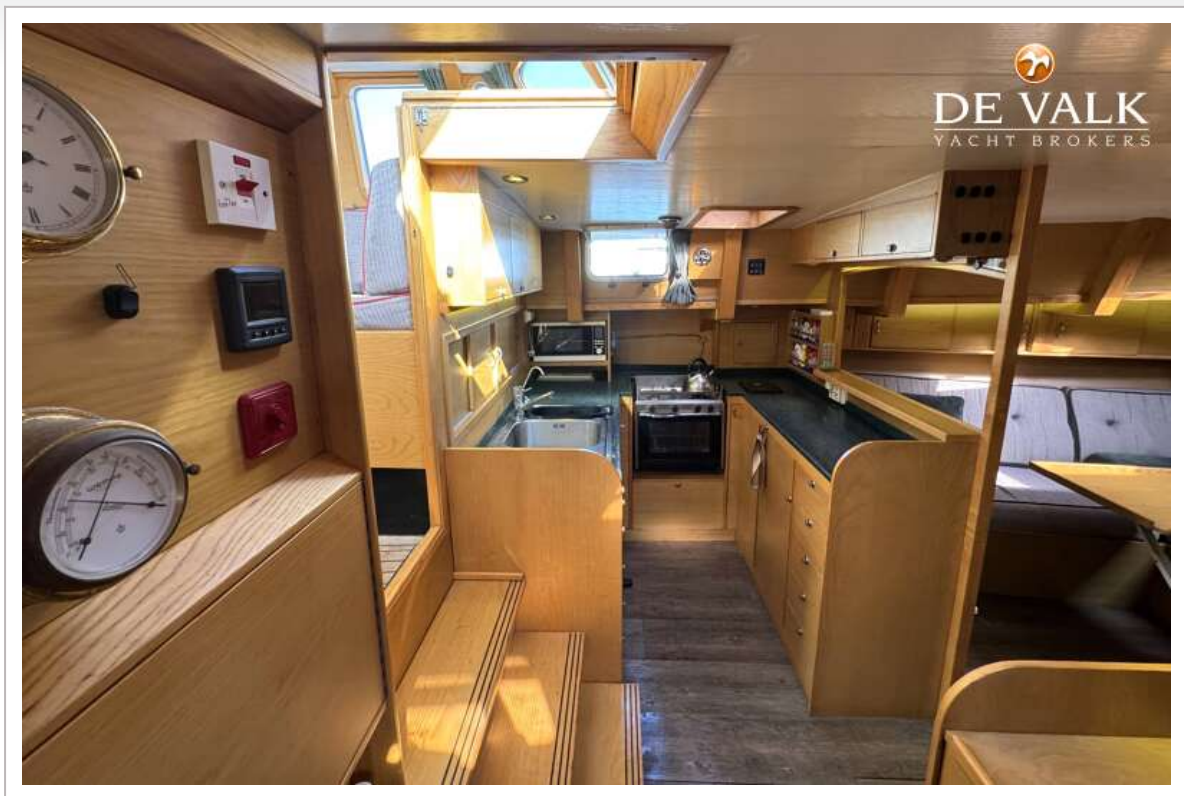
BRUCE ROBERTS SPRAY 40C



BRUCE ROBERTS SPRAY 40C



BRUCE ROBERTS SPRAY 40C



BRUCE ROBERTS SPRAY 40C



BRUCE ROBERTS SPRAY 40C



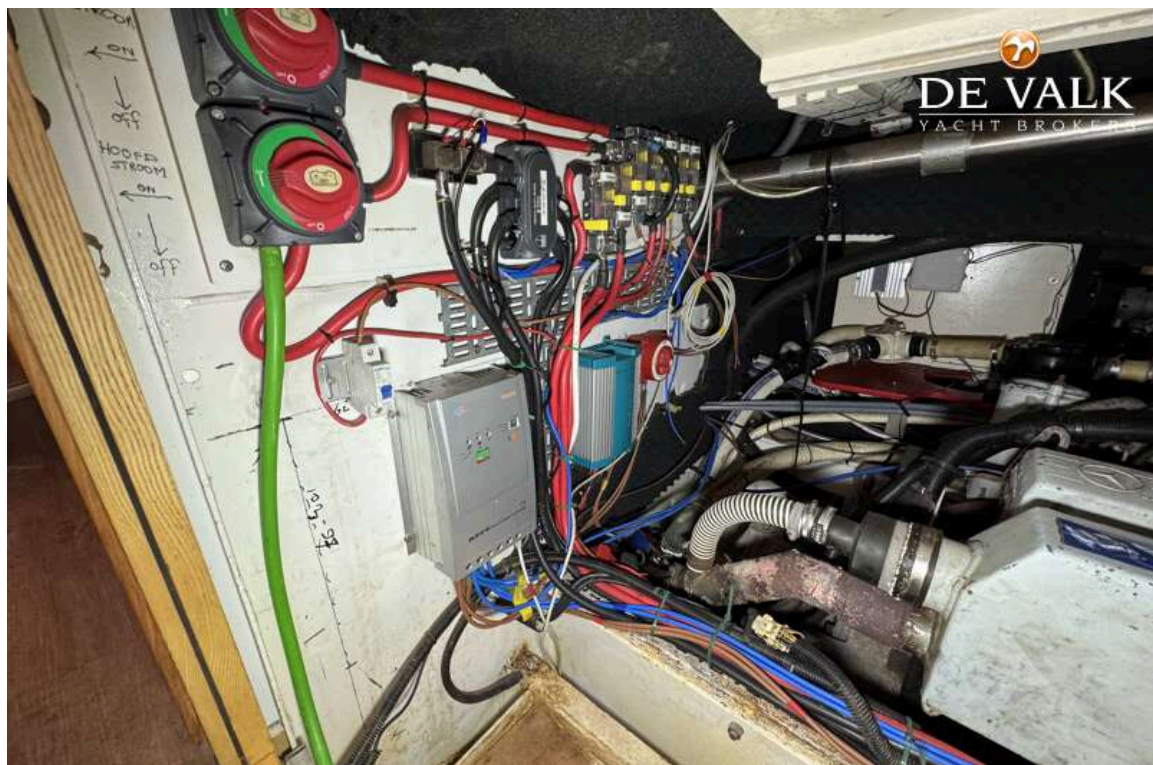
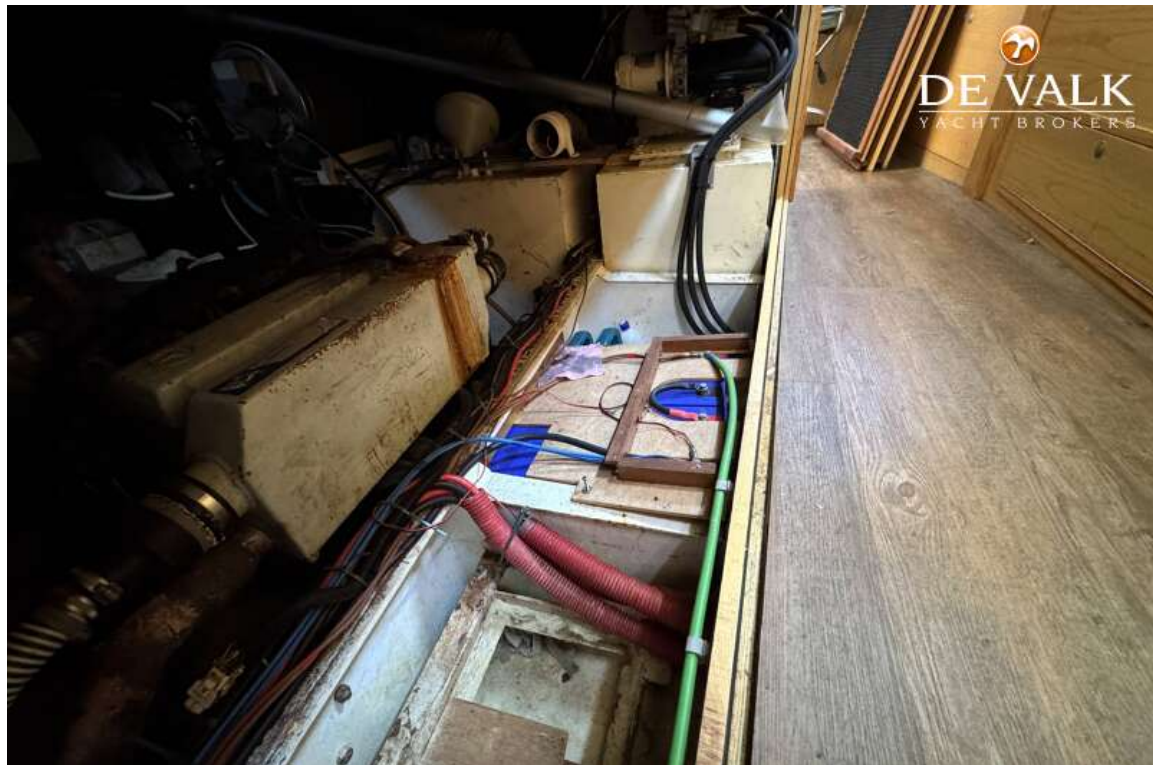
BRUCE ROBERTS SPRAY 40C



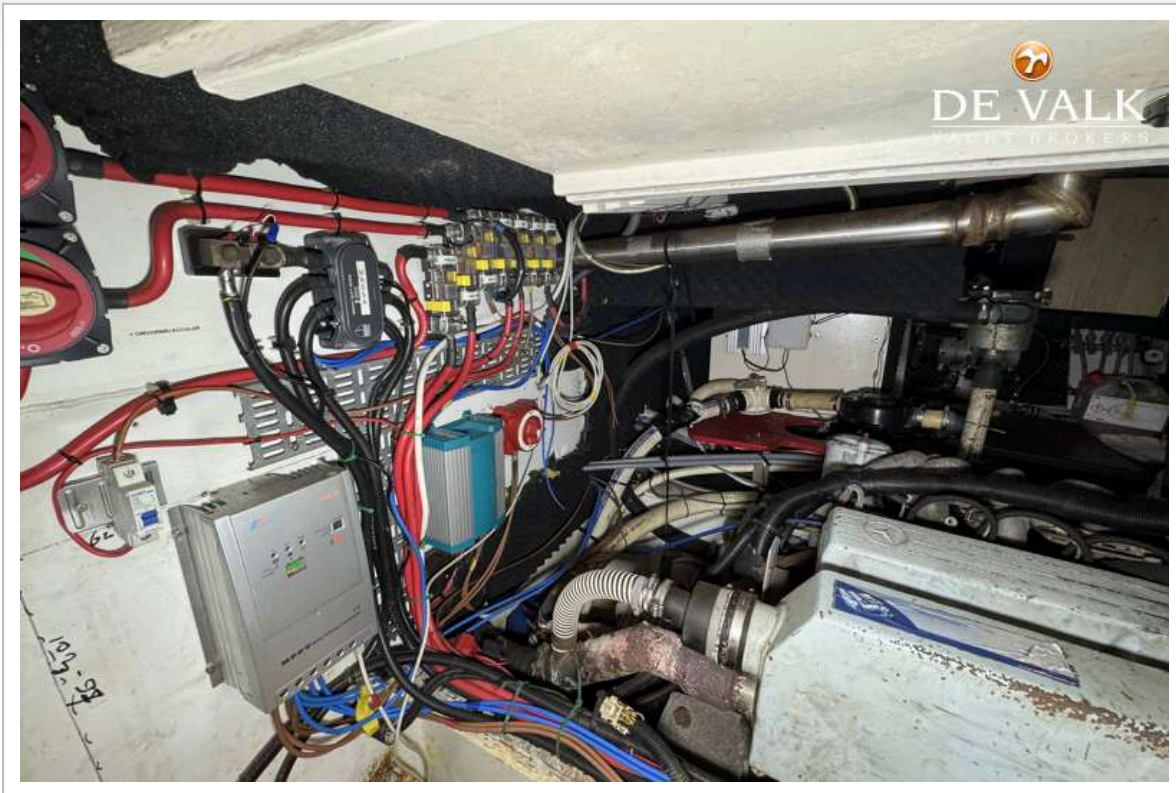
BRUCE ROBERTS SPRAY 40C



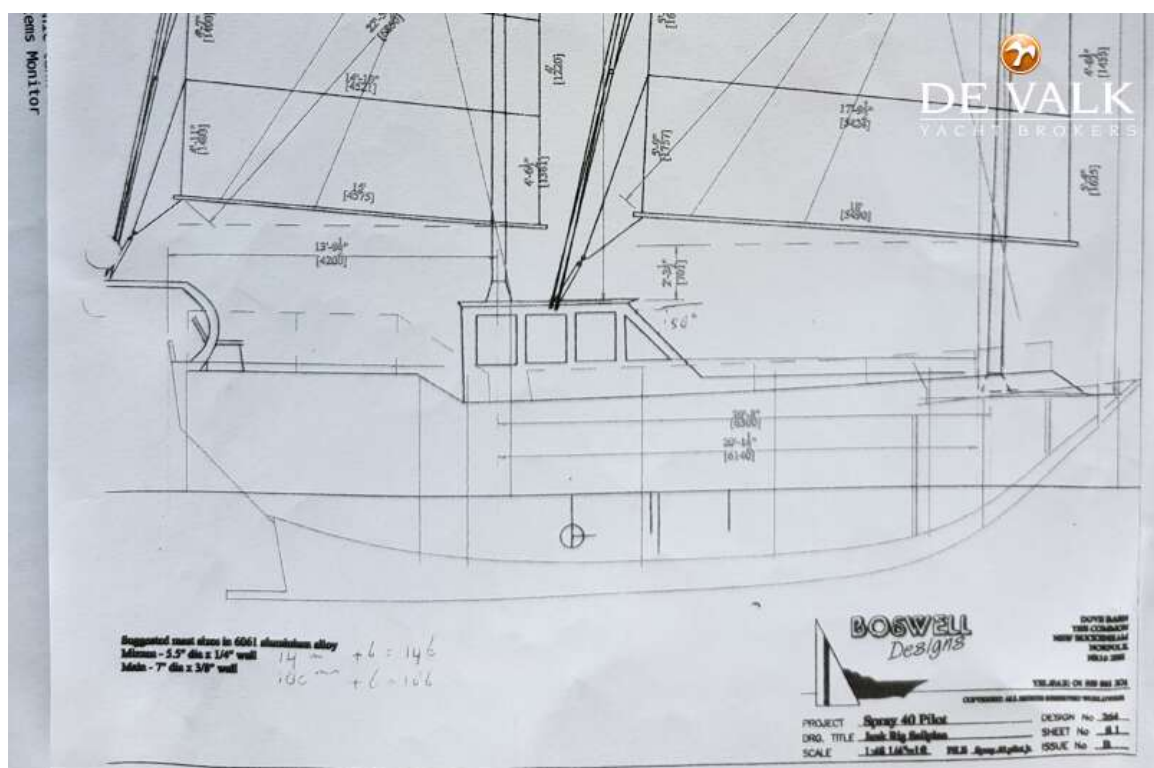
BRUCE ROBERTS SPRAY 40C



BRUCE ROBERTS SPRAY 40C



BRUCE ROBERTS SPRAY 40C



BRUCE ROBERTS SPRAY 40C

