



## LAGOON 40

  
**DE VALK**  
YACHT BROKERS

## BROKER'S COMMENTS

This well maintained 2020 Lagoon 40 Owner Version has been used in charter and is in excellent condition. Featuring a spacious layout, modern equipment, and reliable performance, it's fully ready for immediate takeover and enjoyment. Perfect for private use or continued charter operation.

*Filip Mimica*

## SPECIFICATIONS

<b>Dimensions</b>	11.74 x 6.76 x 1.35 (m)	<b>Builder</b>	Lagoon
<b>Built</b>	2020	<b>Cabins</b>	5
<b>Material</b>	GRP	<b>Berths</b>	8
<b>Engine(s)</b>	2 x YANMAR 4JH45 diesel	<b>Hp/Kw</b>	2 x 45.00 (hp), 33.12 (kw)
<b>Asking price</b>	€ 359.000 (VAT Not paid)	<b>Lying</b>	Croatia

## CONTACT

<b>Sales office</b>	De Valk Dalmatia	<b>Telephone</b>	+385 914 567 834
<b>Address</b>	Ul. Velimira Skorpika 22000 Sibenik HR	<b>E-mail</b>	dalmatia@devalk.nl

## DISCLAIMER

These particulars are given in good faith as supplied but cannot be guaranteed.



## GENERAL

Model	LAGOON 40
Type	catamaran sailing yacht
LOA (m)	11,74
Beam (m)	6,76
Draft (m)	1,35
Air draft (m)	18,42
Year built	2020
Launched	2020
Builder	Lagoon
Country	France
Displacement (t)	10,88
CE norm	C
Hull material	GRP
Hull colour	White
Keel type	Twin keels
Deck material	Gelcoat
Cockpit deck finish	Teak
Antifouling (year)	2025
Window frame	yes
Fuel tank (litre)	300
Fuel tank 2 (litre)	300
Freshwater tank (litre)	2x300
Level indicator (freshwater)	yes
Blackwater tank (litre)	yes
Outside helm position	yes
Emergency tiller	yes

## ACCOMMODATION

Cabins	5
Berths	8



<b>Interior</b>	Owners version
<b>Layout</b>	Two cabins and toilets on a port side one cabin on starboard
<b>Floor</b>	yes
<b>Saloon</b>	yes
<b>Heating</b>	Webasto in saloon
<b>Navigation center</b>	yes
<b>Chart table</b>	yes
<b>Convertible berth</b>	Double berth in the saloon in 'Smart Shark'
<b>Galley</b>	yes
<b>Sink</b>	Stainless
<b>Oven</b>	Eno
<b>Gas alarm</b>	yes
<b>Microwave</b>	yes
<b>Microwave/oven combi</b>	Whirlpool
<b>Fridge</b>	Two in saloon isotherm 42l
<b>Hot water system</b>	yes
<b>Water pressure system</b>	yes
<b>Manual and/or foot pump</b>	In saloon
<b>Hot water tap</b>	yes
<b>Owners cabin</b>	yes
<b>Wardrobe</b>	yes
<b>Toilet</b>	Electric Jabsco
<b>Shower</b>	In every cabin
<b>Guest cabin 1</b>	yes
<b>Wardrobe</b>	yes
<b>Bathroom</b>	yes
<b>Toilet</b>	Electric Jabsco
<b>Toilet system</b>	yes
<b>Shower</b>	yes
<b>Guest cabin 2</b>	yes
<b>Wardrobe</b>	yes
<b>Bathroom</b>	yes



Toilet	Electric Jabsco
Shower	yes
Guest cabin 3	yes
Wardrobe	yes
Bathroom	yes
Toilet	Electric Jabsco
Shower	On stern

## MACHINERY

No of engines	2
Make	YANMAR
Type	4JH45
HP	45
kW	33.12
Fuel	diesel
Year installed	2020
Maximum speed (kn)	7
Cruising speed (kn)	6
Engine hours	2020
Drive	sail-drive
Propeller type	3 blade
Manual bilge pump	yes
Electric bilge pump	yes
Bilge alarm	yes
Batteries	yes
Start battery	2 x 140 amp
Service battery	2x140 amp
Battery monitor	yes
Battery charger	40 amp battery charger
Inverter	12/220 Volt - 2000W
Shorepower	yes



## Extra info

There is an option to install GEN and A.C. at reasonable price

## NAVIGATION

Compass	yes
Depth sounder	B&G Forward Scan echo sounder
Log	yes
Windset	yes
VHF	B&G VHF V50
VHF handheld	B&G H50 VHF handheld at helm station
Autopilot	yes
Radar	yes
GPS	yes
Plotter	B&G Zeus 3 / 12" chartplotter at chart table & steering positi
Radar/GPS	B&G 4G Radar
AIS receiver	B&G AIS 500
AIS transponder	B&G AIS 500
Radio receiver	yes
Navigation lights	yes

## EQUIPMENT

Bimini	Graphite on helm station
Cockpit cushions	yes
Cockpit table	yes
Bathing platform	Stern
Boarding ladder	yes
Gangway	yes
Deck shower	yes
Anchor	yes
Anchor chain	yes
Deck wash	Sea and fresh
Dinghy	Highfield UL 290



Outboard	Honda Marine BF 10 SHU
Life raft	8 people
Lifejackets	yes
Safety harness	yes
Horn	Hand held
Radar reflector	yes
Fenders	yes
Mooring lines	yes
Spare parts	yes
Tools	yes
Alarm system	yes
TV	Aerial
Radio	Fusion
Cockpit speakers	yes
Speakers in salon	yes
Speakers in cabin	yes

## RIGGING

Standing rigging	yes
Material mast	Aluminum
Mainsail	47,5 m² Dacron Square Top
Mainsail cover	Lazy bag, Graphite Grey
Genoa	33,8 m²
Reefing System	yes
Halyard winches	40.2 STAEH
Extra info	Electric manoeuvring winch starboard 40.2 STAEH



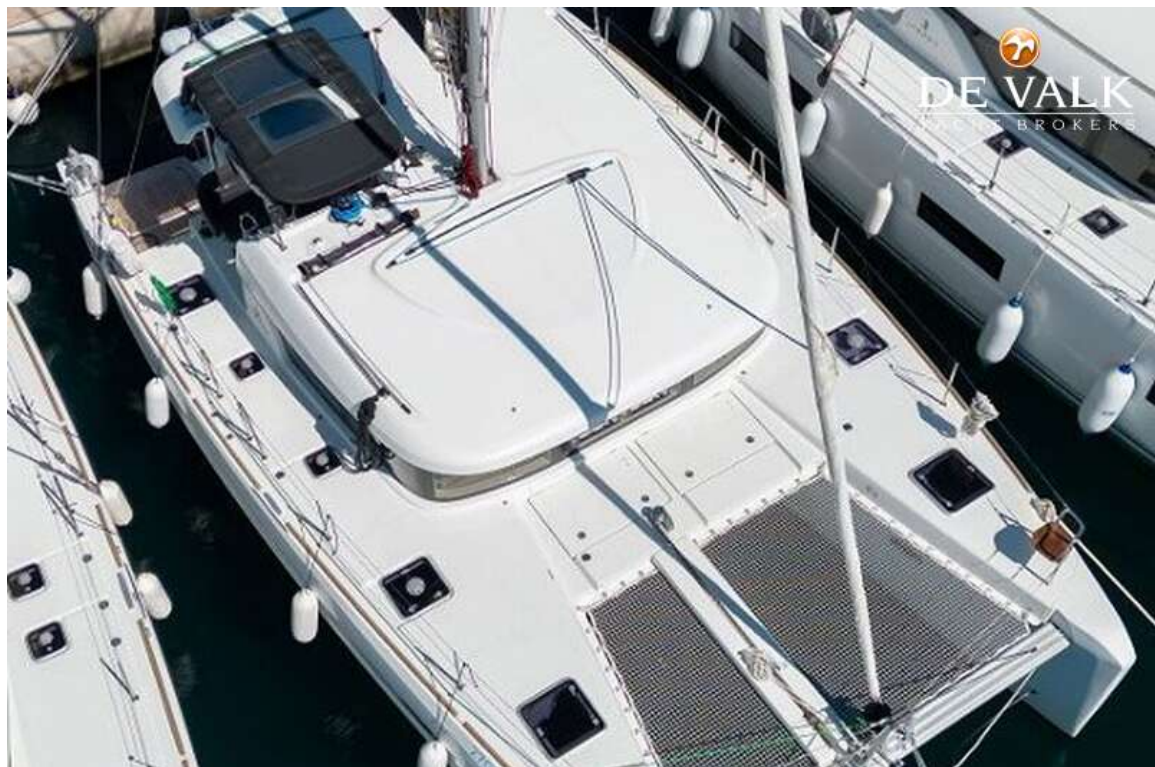


# LAGOON 40



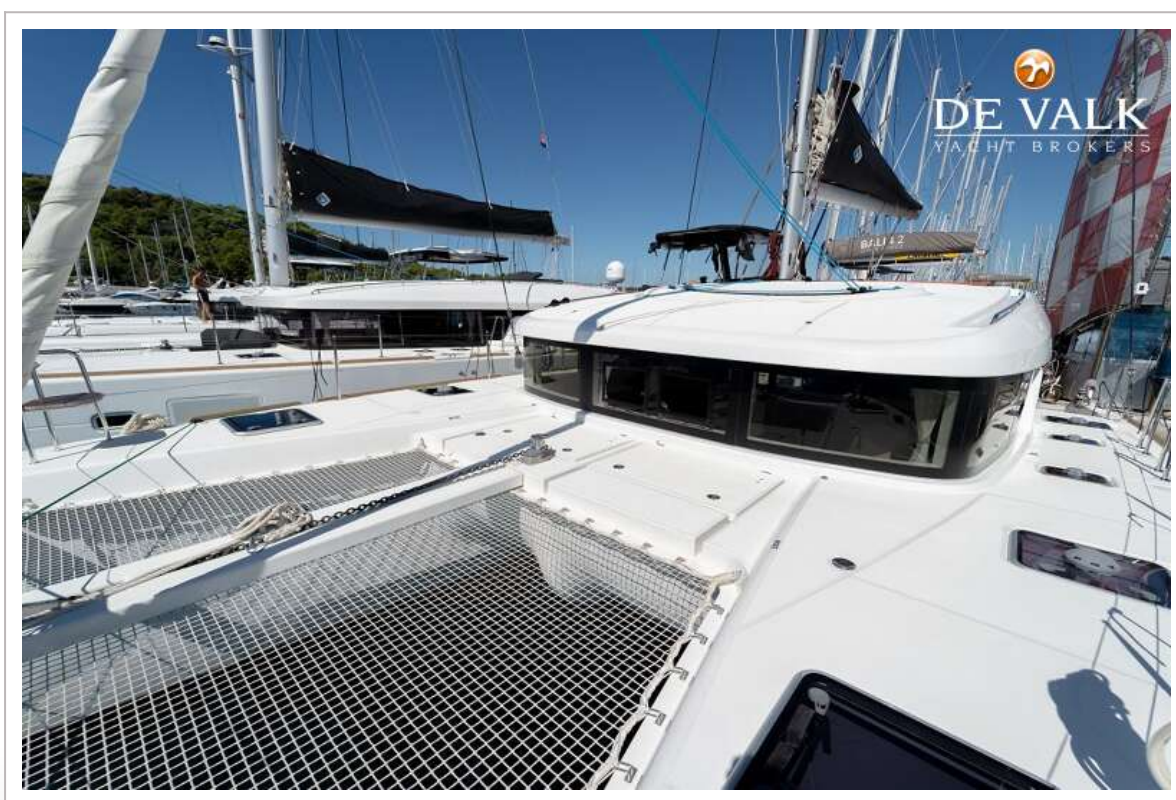


# LAGOON 40





# LAGOON 40



# LAGOON 40

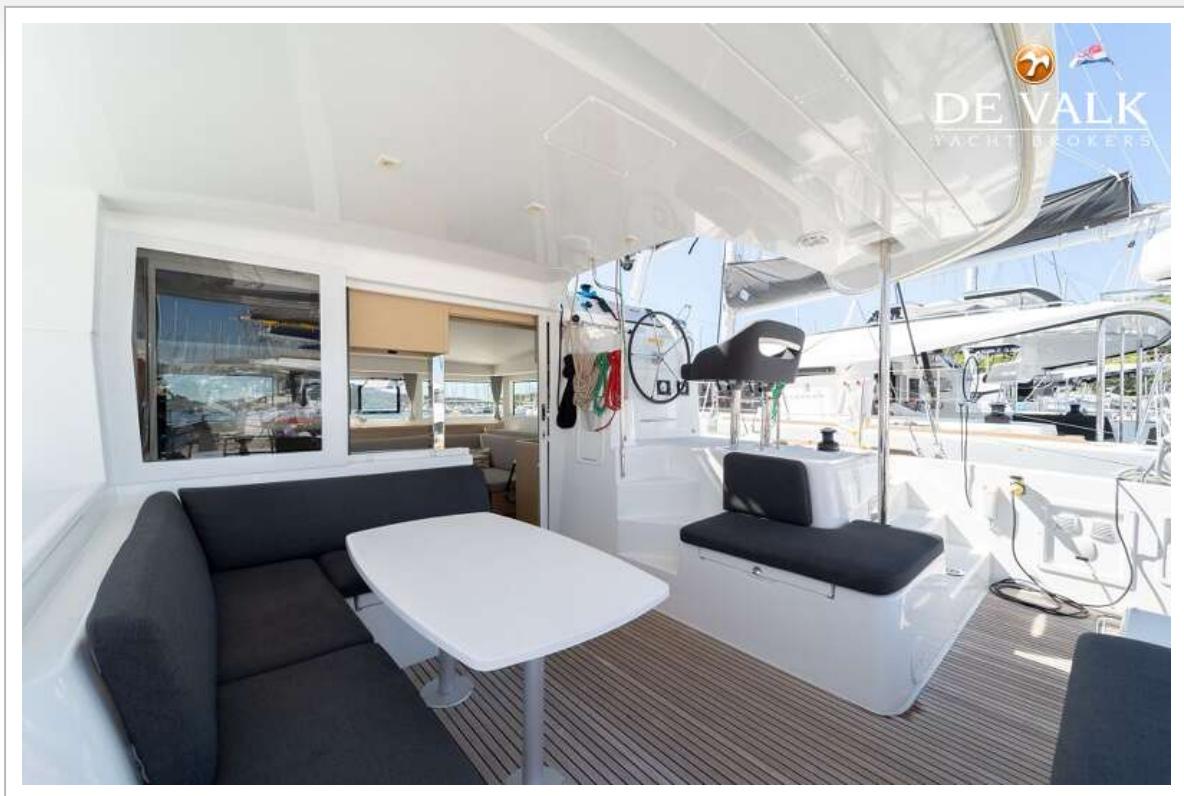




# LAGOON 40



# LAGOON 40



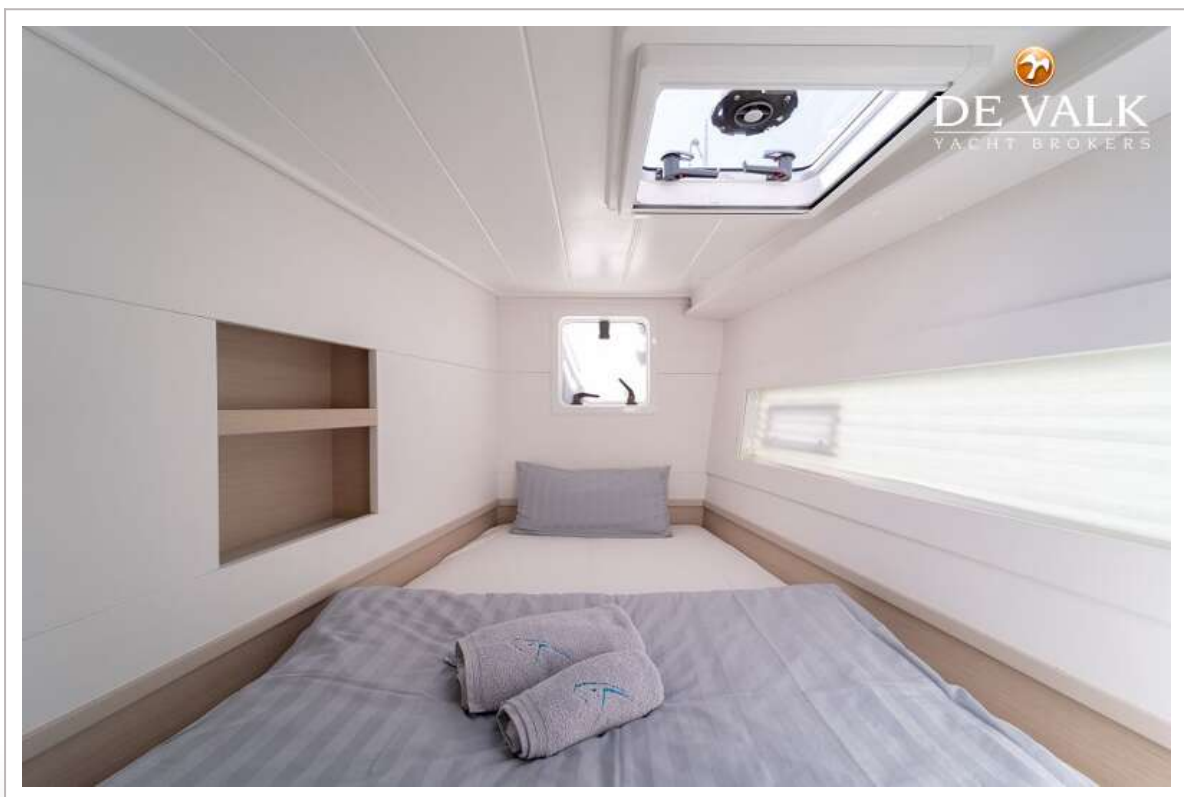


# LAGOON 40





# LAGOON 40



# LAGOON 40



# LAGOON 40







# LAGOON 40



# LAGOON 40

