



## BENETTI SAIL DIVISION 80 CUSTOM



# BENETTI SAIL DIVISION 80 CUSTOM

## BROKER'S COMMENTS

The Benetti Sail Division 80 Custom was built for a knowledgeable owner. Designed by Carlo Trezzi, this well-maintained displacement yacht offers a unique opportunity. Her layout features a full-beam master cabin and three additional guest cabins, each with ensuite bathrooms. The main deck layout provides ample space for extended liveaboard, whether cruising or at anchor. The steel hull offers a strong and reliable platform, ensuring stability and safety even in high seas, thanks to the lighter aluminium superstructure. Considerable investments have been made by her second owner.

*Miha Spendal*

## SPECIFICATIONS

<b>Dimensions</b>	25.30 x 6.40 x 2.10 (m)	<b>Builder</b>	Benetti sail division
<b>Built</b>	2003	<b>Cabins</b>	4
<b>Material</b>	Steel	<b>Berths</b>	8
<b>Engine(s)</b>	2 x MAN D2842 LE402 diesel	<b>Hp/Kw</b>	2 x 1,100.00 (hp), 808.50 (kw)
<b>Asking price</b>	€ 1.149.900 (VAT Paid)	<b>Lying</b>	contact sales office

## CONTACT

<b>Sales office</b>	De Valk Istria	<b>Telephone</b>	+386 (1) 600 2704
<b>Address</b>	(Marina Izola) Dantejeva Ulica 22 6310 Izola SI	<b>E-mail</b>	istria@devalk.nl

## DISCLAIMER

These particulars are given in good faith as supplied but cannot be guaranteed.



## GENERAL

Model	BENETTI SAIL DIVISION 80 CUSTOM
Type	motor yacht
LOA (m)	25,30
LWL (m)	21,30
Beam (m)	6,40
Draft (m)	2,10
Air draft min (m)	6,40
Headroom (m)	2,05
Year built	2003
Launched	2004
Builder	Benetti sail division
Country	Italy
Designer	Carlo Trezzi
Displacement (t)	100
CE norm	A
Hull material	steel
Hull colour	white
Hull thickness (mm)	FE 420 steel
Hull shape	round-bilged
Keel type	box keel
Superstructure material	aluminium Peraluman 450 Aluminium
Rubbing strake	aluminum
Deck material	aluminium
Deck finish	teak Complete refit 2024
Superstructure deck finish	teak Complete refit 2024
Cockpit deck finish	teak Complete refit 2024
Antifouling (year)	2025
Dorades	yes
Window frame	aluminium
Window material	tempered glass



Deckhatch	yes
Portholes	yes
Insulation	airfoil
Flybridge	Re-model of fly-bridge all new teak furniture 2024
Flybridge cover	yes
Radar arch	yes
Fuel tank (litre)	21000, Refurbished fuel transfer pump 2025
Level indicator (fuel tank)	yes
Freshwater tank (litre)	3000
Level indicator (freshwater)	yes
Blackwater tank (litre)	1000
Level indicator (blackwater)	yes
Blackwater tank extraction	yes
Greywater tank (litre)	1000
Level indicator (greywater)	All grey-water tanks float switches and pumps replaced 2025
Wheel steering	yes
Inside helm position	yes
Outside helm position	yes
Flybridge helm position	yes
Emergency tiller	yes
Extra info	CE-A classified for 16 pers
Extra info	Bulb for enhanced economics and better seagoing

## ACCOMMODATION

Cabins	4
Berths	8
Crew cabin	1
Crew berths	1
Interior	cherry
Layout	Owner with crew
Floor	parquet



# BENETTI SAIL DIVISION 80 CUSTOM

Aft deck	Re-model of cockpit new (aft) teak seat 2024
Pilot house	yes
Pilot house/deck saloon	yes
Headroom saloon (m)	2,10
Heating	ACV
Air-conditioning	reverse cycle airco 80.000 BTU each area, New salt water cooling pump 2024
Navigation center	yes
Aft Cabin	yes
Dining room	yes
Sliding door to aft deck	yes
Galley	New underfloor and floor for kitchen and dining area
Countertop	corian
Sink	stainless steel Double, new 2024
Cooker	electric Bosch from 2024
Oven	Bosch from 2024
Extractor	Stainless steel
Microwave/oven combi	Gaggenau Stainless
Fridge	Bosch new 2024, Double fridge/freezer
Freezer	Bosch new 2024
Hot water system	yes
Water pressure system	yes
Dishwasher	Bosch new 2024
Kettle	yes
Owners cabin	French bed Central cabin full beam
Bed length (m)	2,10
Wardrobe	walk-in closet
Bathroom	en suite
Toilet	en suite
Toilet system	electric
Wash basin	in the bathroom
Shower	en suite



# BENETTI SAIL DIVISION 80 CUSTOM

<b>Guest cabin 1</b>	twin single
<b>Bed length (m)</b>	2,00
<b>Wardrobe</b>	hanging/drawers/shelves
<b>Bathroom</b>	en suite
<b>Toilet</b>	en suite
<b>Toilet system</b>	electric Port guest cabin new electrical toilets 2025
<b>Wash basin</b>	in the bathroom
<b>Shower</b>	en suite
<b>Guest cabin 2</b>	twin single
<b>Bed length (m)</b>	2,00
<b>Wardrobe</b>	hanging/drawers/shelves
<b>Bathroom</b>	en suite
<b>Toilet</b>	en suite
<b>Toilet system</b>	electric
<b>Wash basin</b>	in the bathroom
<b>Shower</b>	en suite
<b>Guest cabin 3</b>	twin single Seperate entrance on aft deck
<b>Bed length (m)</b>	2,00
<b>Wardrobe</b>	hanging and shelves
<b>Bathroom</b>	ensuite
<b>Toilet</b>	en suite
<b>Toilet system</b>	electric
<b>Wash basin</b>	in the bathroom
<b>Shower</b>	en suite
<b>Extra info</b>	This cabin can also be used as crew cabin
<b>Crew cabin(s)</b>	1 in the bow
<b>Bathroom (crew)</b>	1
<b>Toilet (crew)</b>	1
<b>Toilet system</b>	electric Bow/crew new electrical toilet 2025
<b>Wash basin</b>	in the bathroom
<b>Shower (crew)</b>	ensuite
<b>Washing machine</b>	yes



Dryer	yes
Sky lounge	yes
Flybridge	yes
Wet bar	yes

## MACHINERY

No of engines	2
Make	MAN
Type	D2842 LE402
HP	1100
kW	808.50
Fuel	diesel
Year installed	2003
Maximum speed (kn)	13
Cruising speed (kn)	10
Consumption (l/hr)	80
Range (nm)	2200
Engine hours	1447 1461
Engine cooling system	freshwater heat exchanger
Drive	shaft
Shaft seal	yes
Engine controls	electrical 3rd docking station in cockpit
Gearbox	hydraulic
Bowthruster	hydraulic 25 KW
Sternthruster	hydraulic 25 KW
Propeller type	fixed Bronze
Propeller blades	4
Propeller shaft material	stainless steel
Shaft lubrication	water
Manual bilge pump	yes
Electric bilge pump	New float switches for all automatic bilge pumps 2025



<b>Bilge alarm</b>	yes
<b>Electrical installation</b>	24 V DC and 240 V AC 50 Hz
<b>Generator</b>	silent separator Kohler 17,5 KVA, New heat exchanger 2023
<b>Running hours generator</b>	2240
<b>Generator 2</b>	silent separator Kohler 17,5 KVA, New heat exchanger 2023
<b>Running hours generator 2</b>	2250
<b>Batteries</b>	yes
<b>Start battery</b>	For engines new 2023, for generators new 2025
<b>Service battery</b>	New 24 V service battery bank 1600Ah in 2023, AGM
<b>Generator battery</b>	yes
<b>Battery monitor</b>	yes
<b>Battery charger</b>	yes
<b>Inverter</b>	yes
<b>Battery charger/inverter</b>	New victron charger inverter 2024
<b>Shorepower</b>	with cable
<b>Watermaker</b>	Hidromar watermaker 2023, 250 l/h
<b>Stabilizers</b>	fin Naiad, New hydraulic lines 2024
<b>Extra info</b>	Emergency manual engine controls in pilothouse

## NAVIGATION

<b>Compass on flybridge</b>	Suunto
<b>Electric compass</b>	Simrad
<b>Depth sounder</b>	Simrad
<b>Log</b>	Simrad
<b>Repeater</b>	Simrad
<b>VHF</b>	NEW 2024
<b>VHF handheld</b>	NEW 2024
<b>Autopilot</b>	Simrad AP50
<b>Rudder angle indicator</b>	yes
<b>Radar</b>	Simrad
<b>GPS</b>	Simrad



Plotter	Simrad
Plotter/GPS	Garmin, 2024
Radar/GPS/plotter	3 x Simrad (CE52& 2 x RA42)
Personal computer	With printer
PC connection	yes
Wifi antenna	yes
Electronic chart(s)	yes
AIS receiver	Garmin, 2024
AIS transponder	Garmin, 2024
AIS transceiver	Garmin, 2024
Camera	Engineroom
Navigation lights	yes
Searchlight	yes
Loudhailer	Intercom

## EQUIPMENT

Fixed windscreen	yes
Bimini	yes
Sun awning	yes
Cockpit cushions	New outdoor cushions from 2024
Cockpit table	yes
Cockpit chairs	yes
Bathing platform	yes
Boarding ladder	aluminum
Transom door	yes
Gangway	yes
Deck shower	yes
Anchor	yes
Anchor chain	yes
Windlass	yes
Capstan	Complete overhaul of capstan 2024



Deck wash	yes
Dinghy	inflatable New 2.4m inflatable tender 2025
Outboard	yes
Deck crane	yes
Grab rail (superstructure)	stainless steel
Life raft	container 2 new life rafts from 2024
Life raft (pers)	2 x 6
Wiper	Water pumps refurbished 2023
Horn	yes
Fenders	yes
Mooring lines	yes
Spare parts	yes
Tools	yes
TV	yes
Radio-cd player	yes
DVD player	yes
Speakers in cabin	yes
Fire extinguisher	yes
Latest extinguisher survey	yes
Extinguisher in engine room	Automatic fire extinguishers recharged, replaced all hoses 2024
Auto extinguisher system	yes

## RIGGING

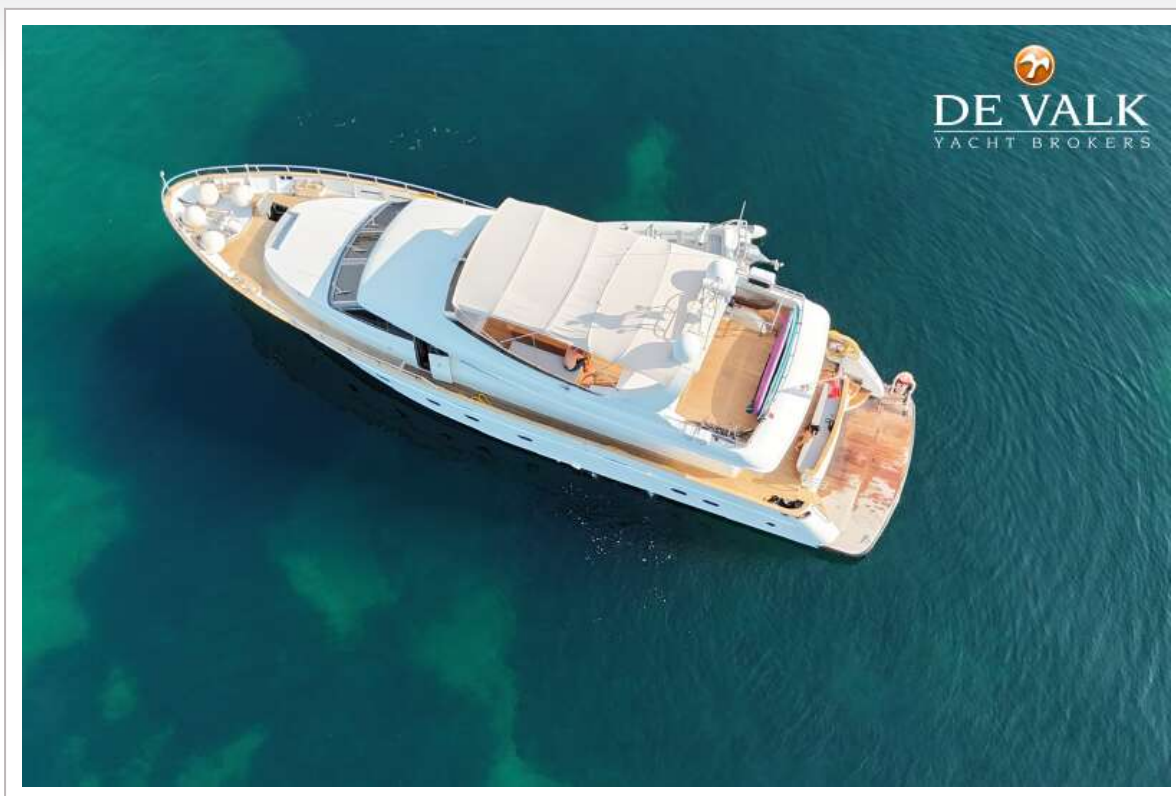
Multifunctional winches	Mooring winches, Overhaul of 4 electric winches 2024
-------------------------	--



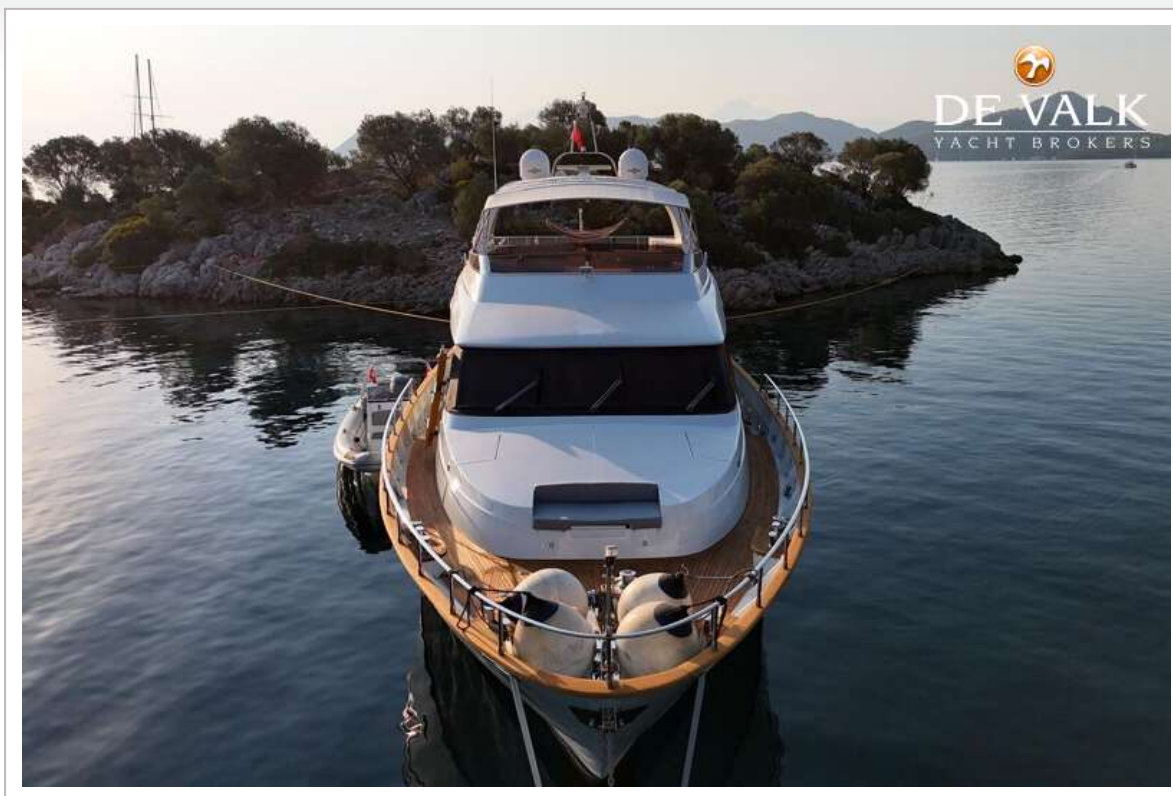
# BENETTI SAIL DIVISION 80 CUSTOM



# BENETTI SAIL DIVISION 80 CUSTOM



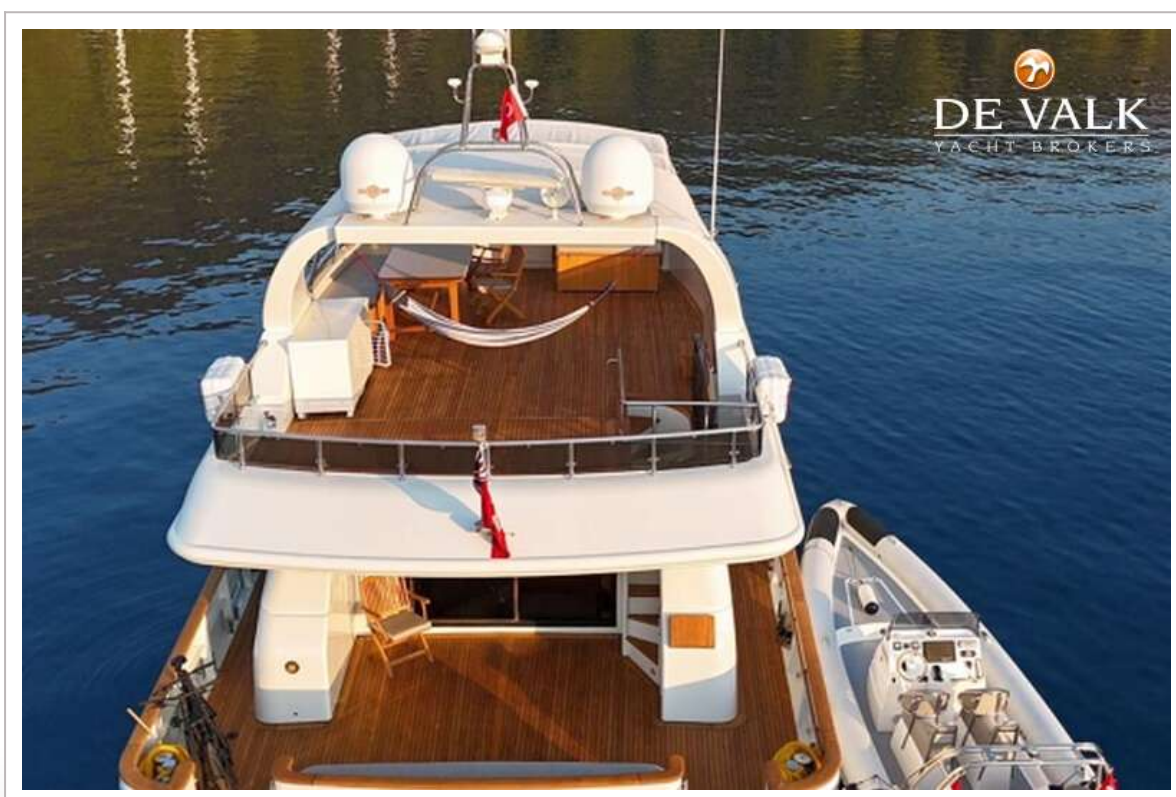
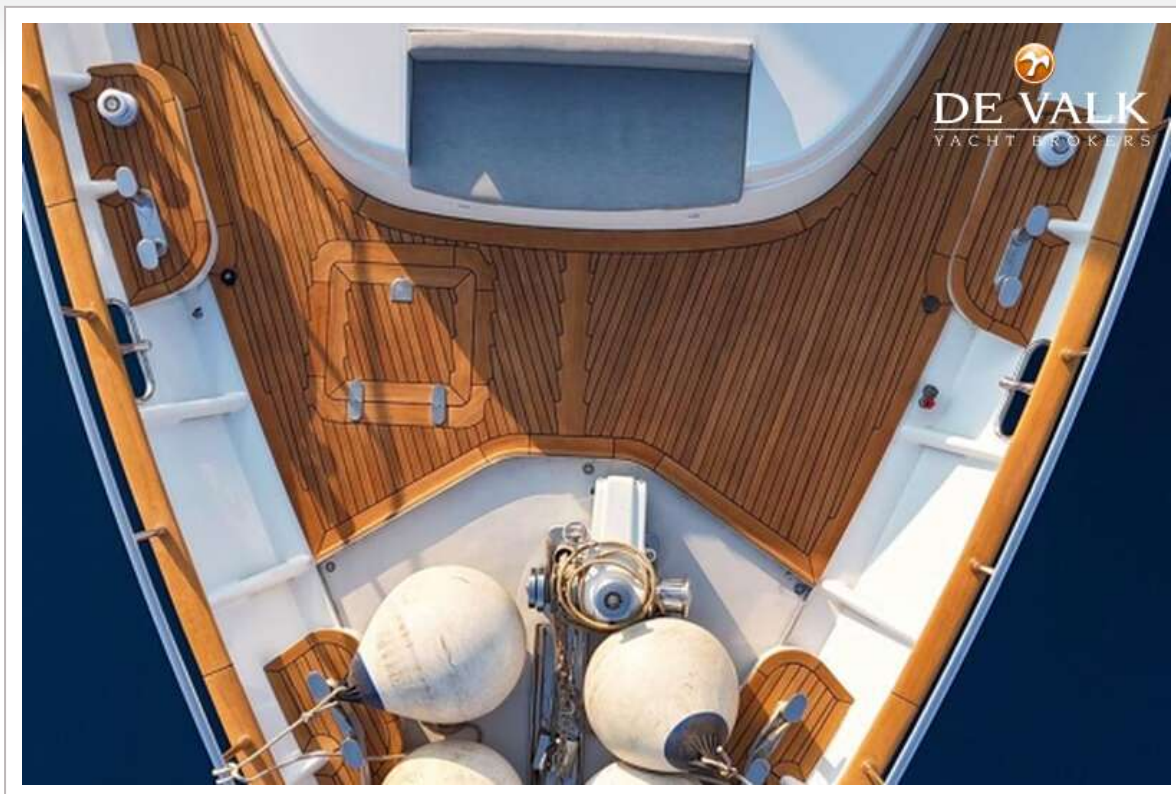
# BENETTI SAIL DIVISION 80 CUSTOM



# BENETTI SAIL DIVISION 80 CUSTOM



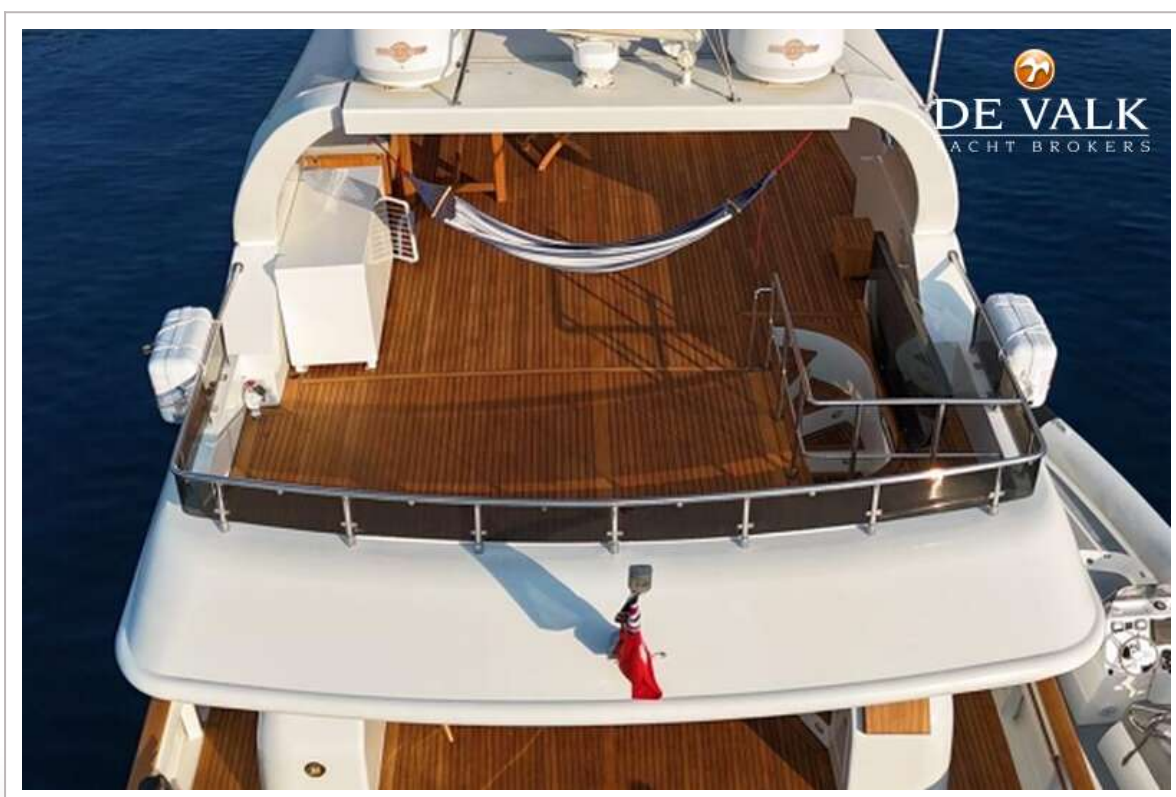
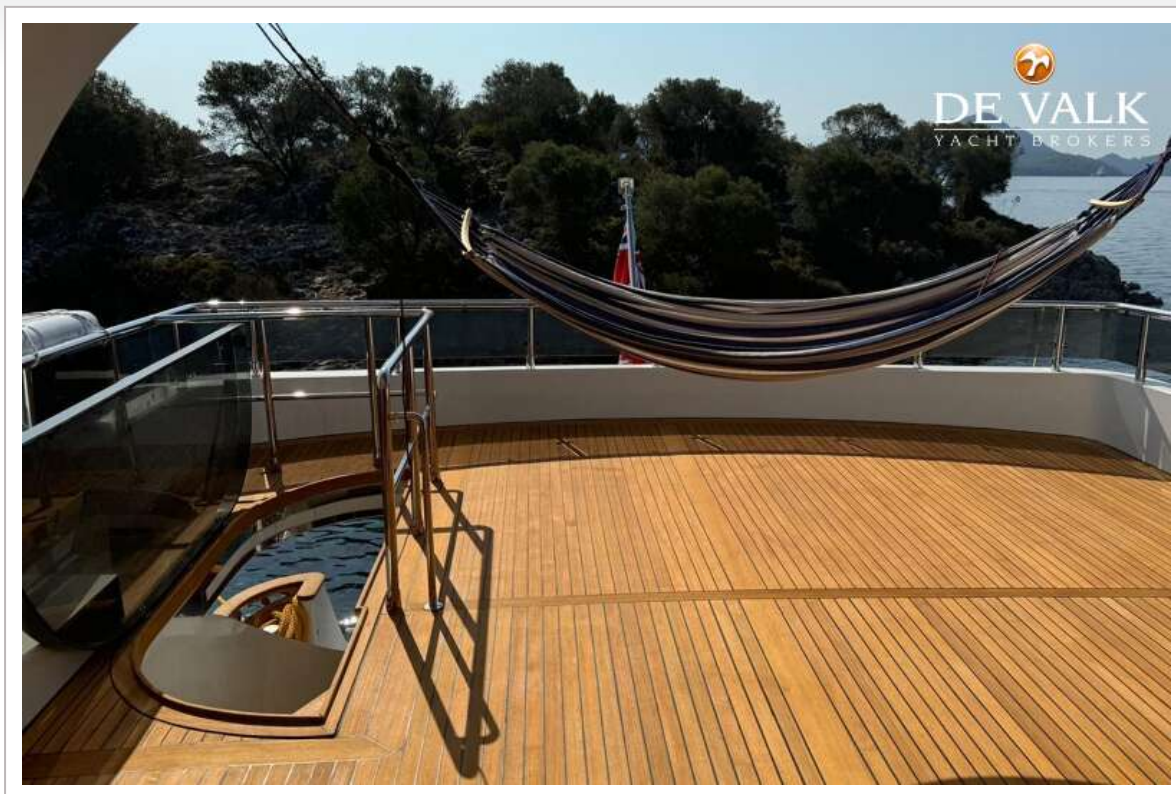
# BENETTI SAIL DIVISION 80 CUSTOM



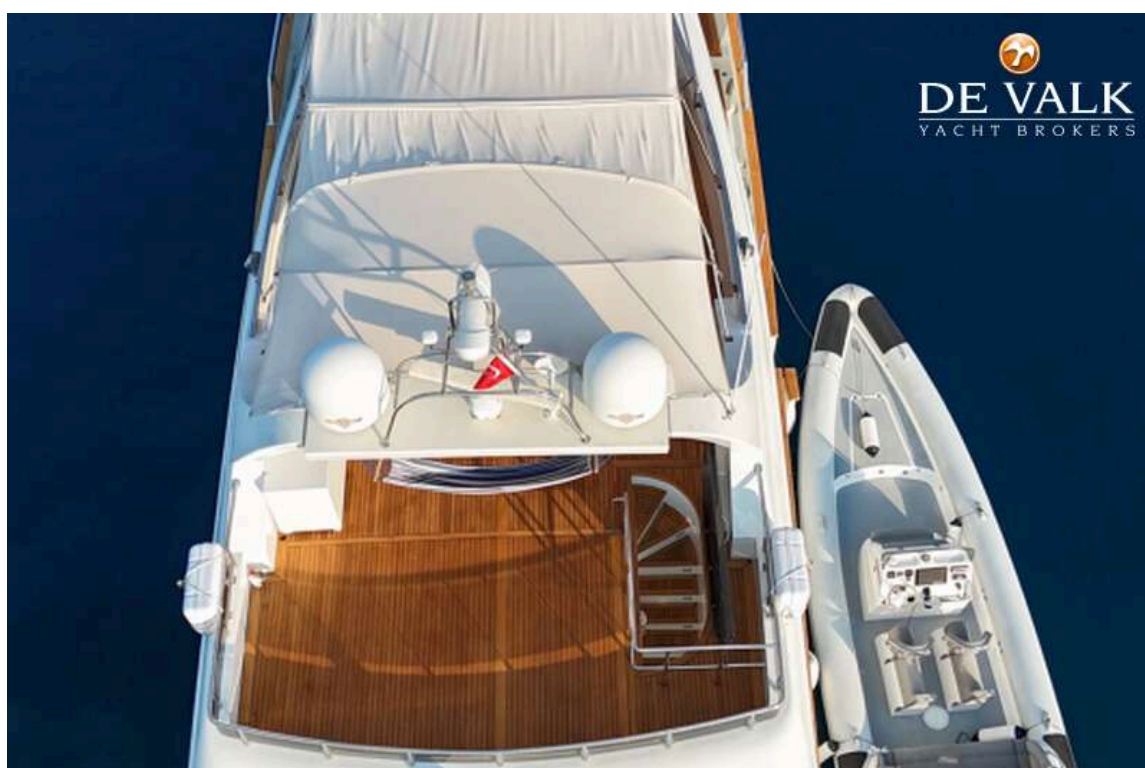
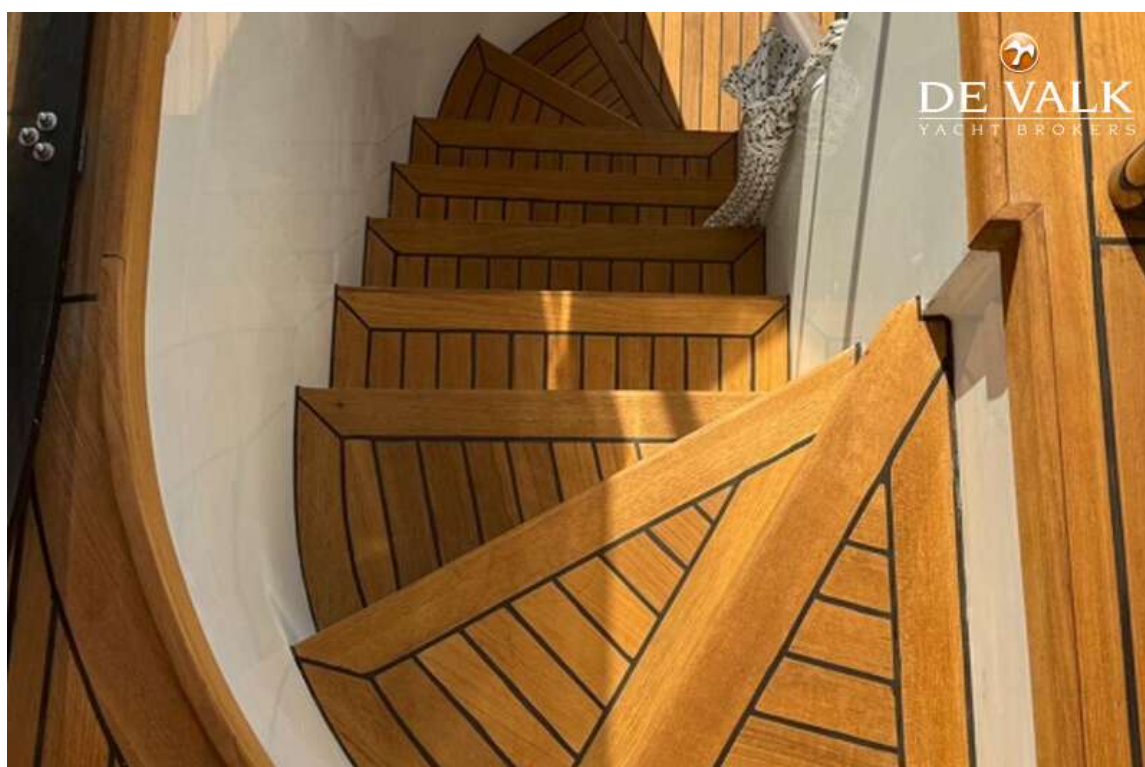
# BENETTI SAIL DIVISION 80 CUSTOM



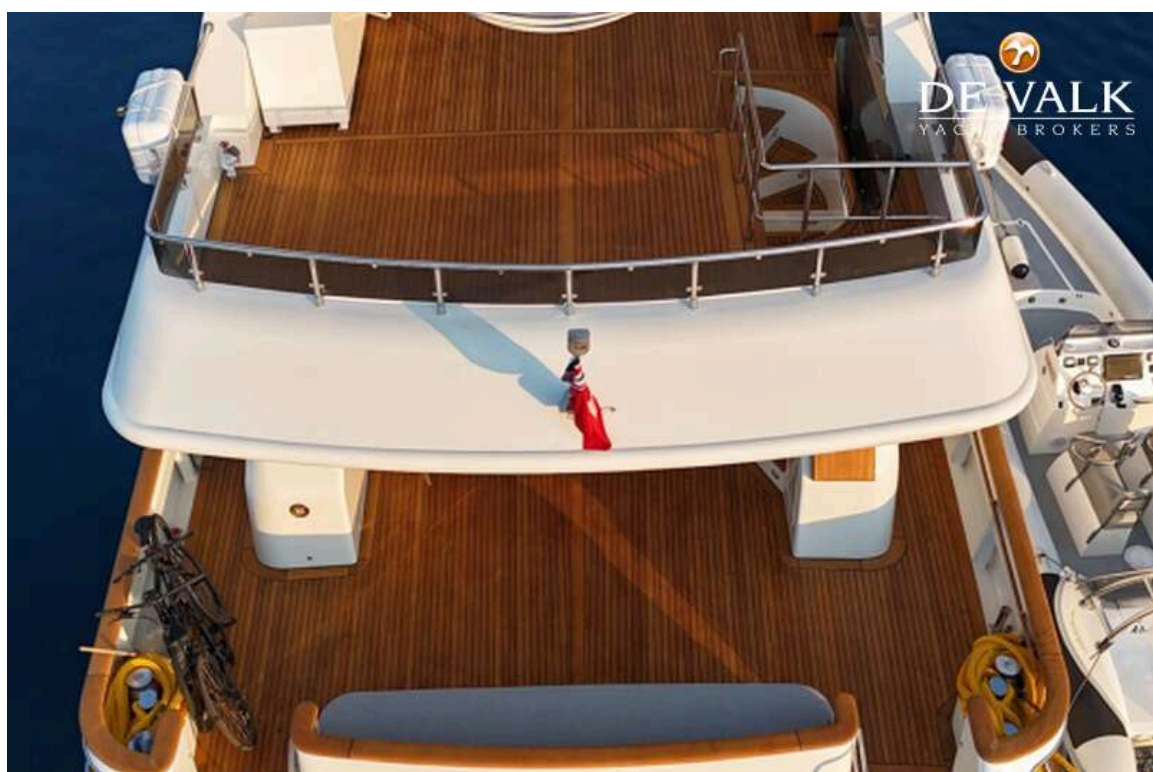
# BENETTI SAIL DIVISION 80 CUSTOM



# BENETTI SAIL DIVISION 80 CUSTOM



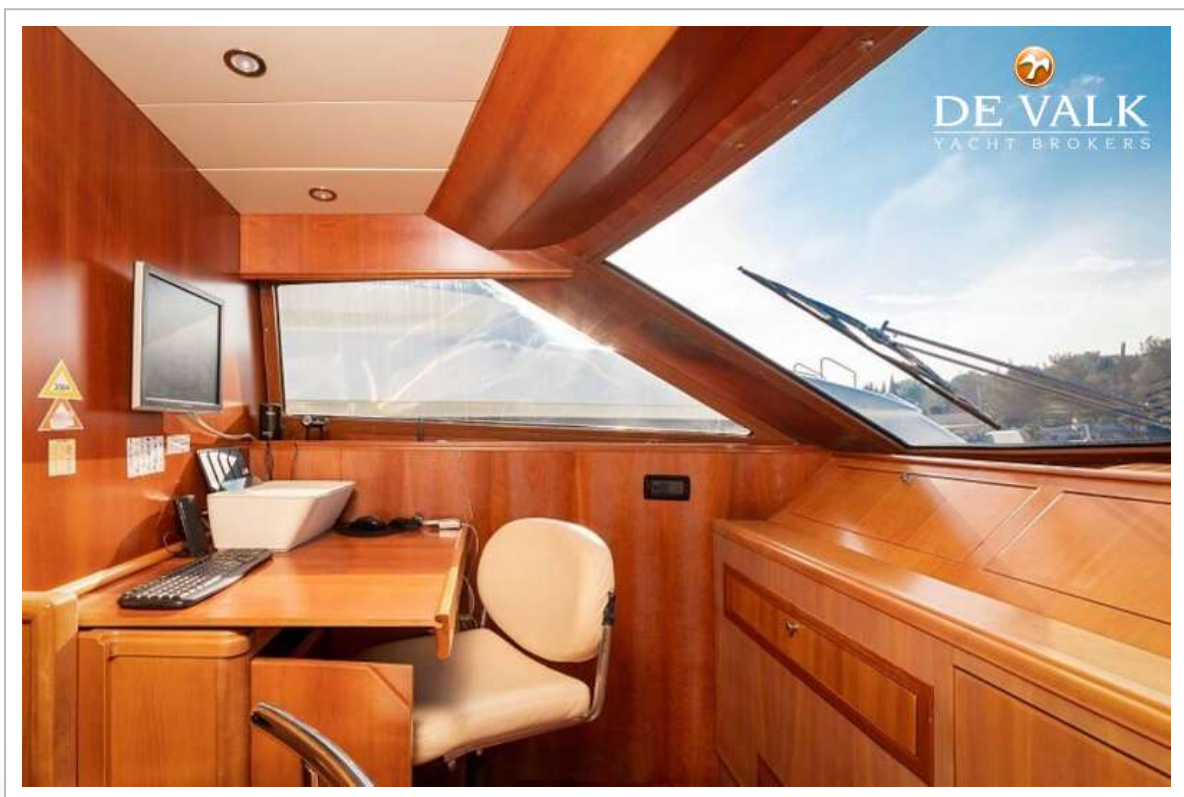
# BENETTI SAIL DIVISION 80 CUSTOM



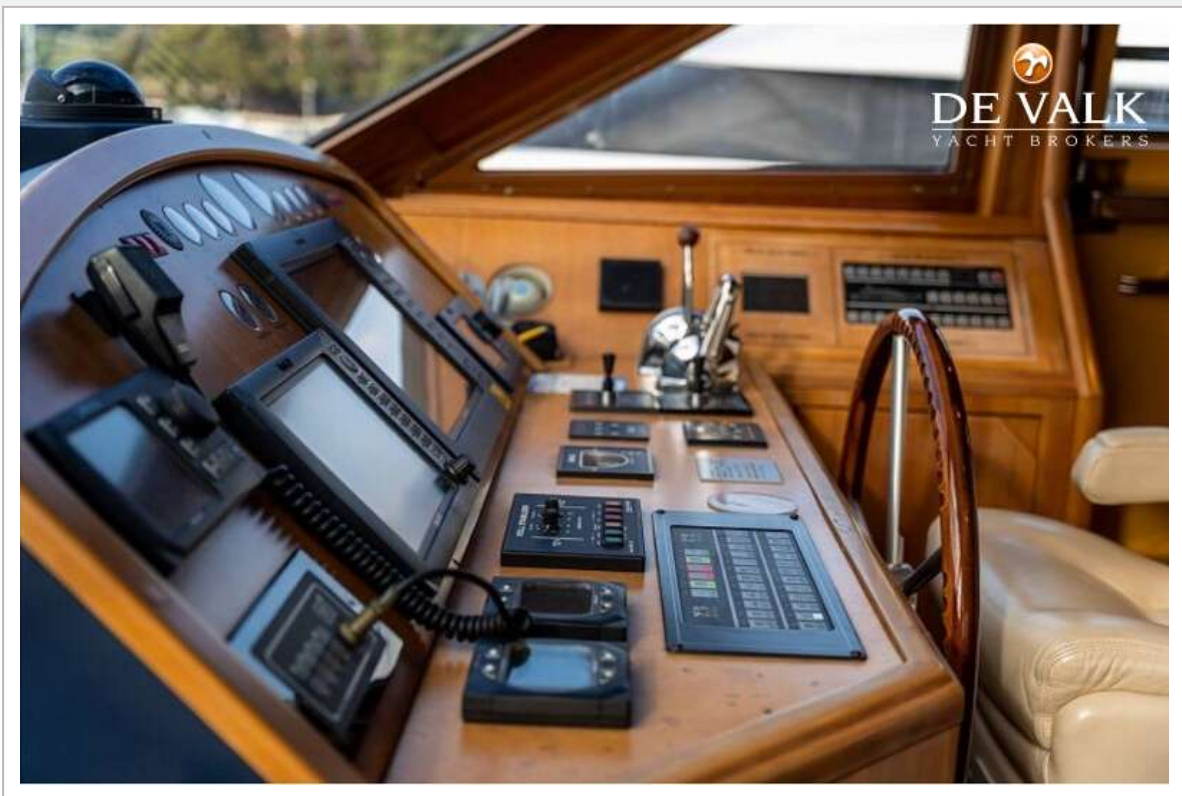
# BENETTI SAIL DIVISION 80 CUSTOM



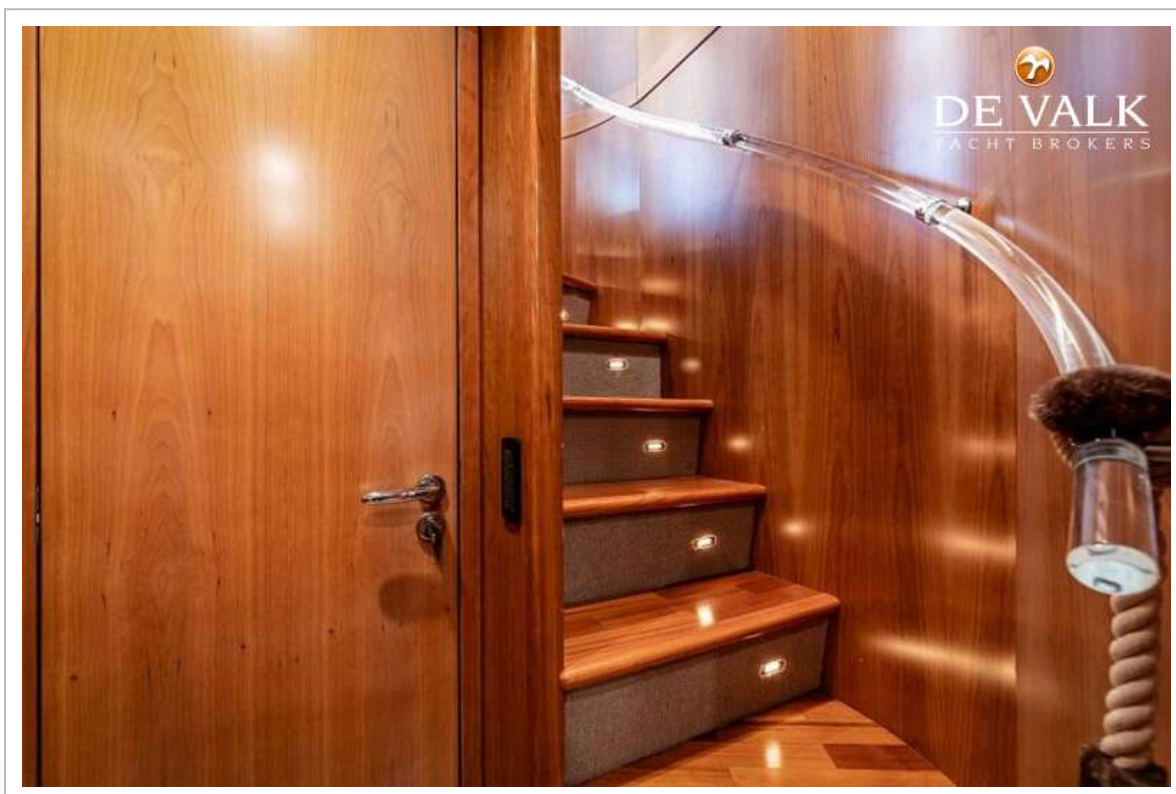
# BENETTI SAIL DIVISION 80 CUSTOM



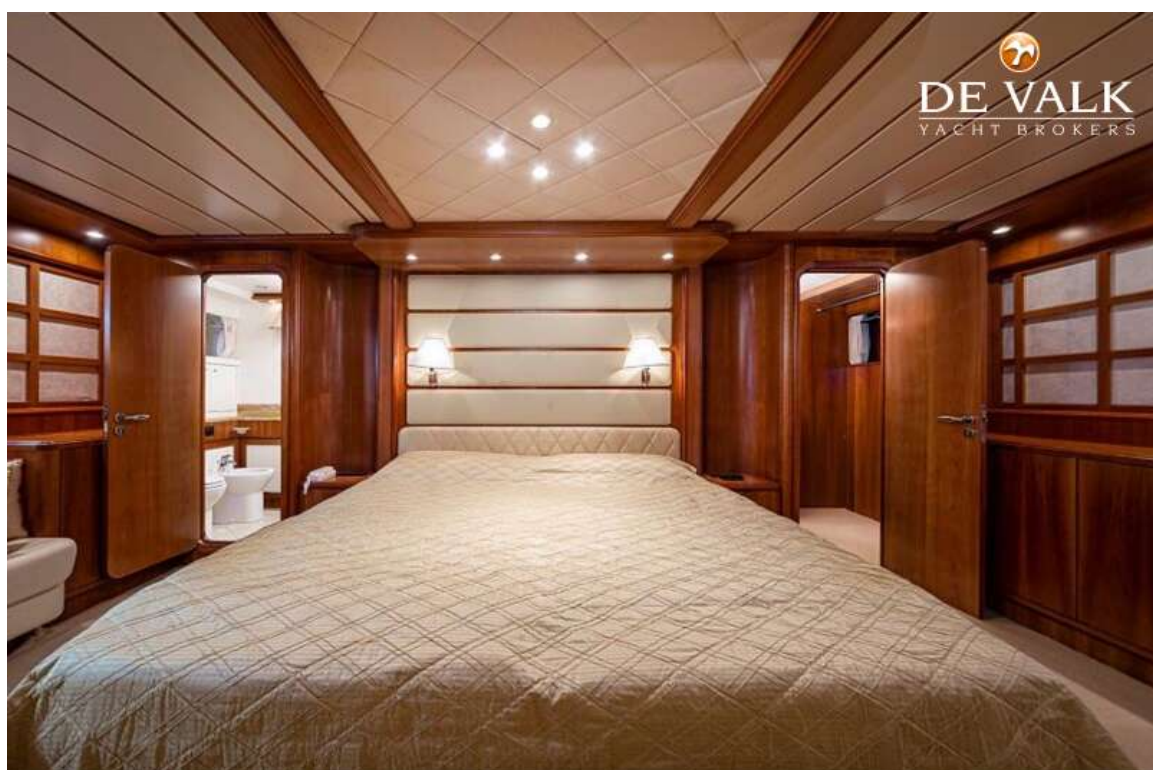
# BENETTI SAIL DIVISION 80 CUSTOM



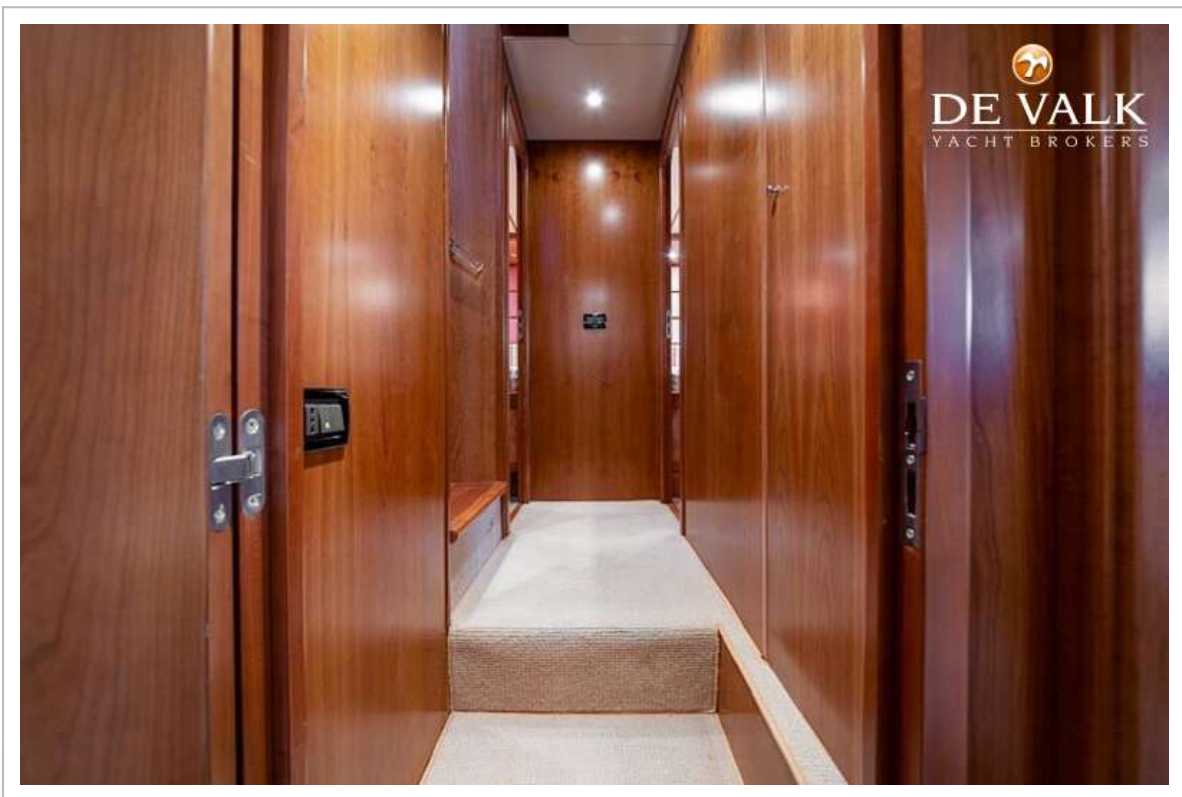
# BENETTI SAIL DIVISION 80 CUSTOM



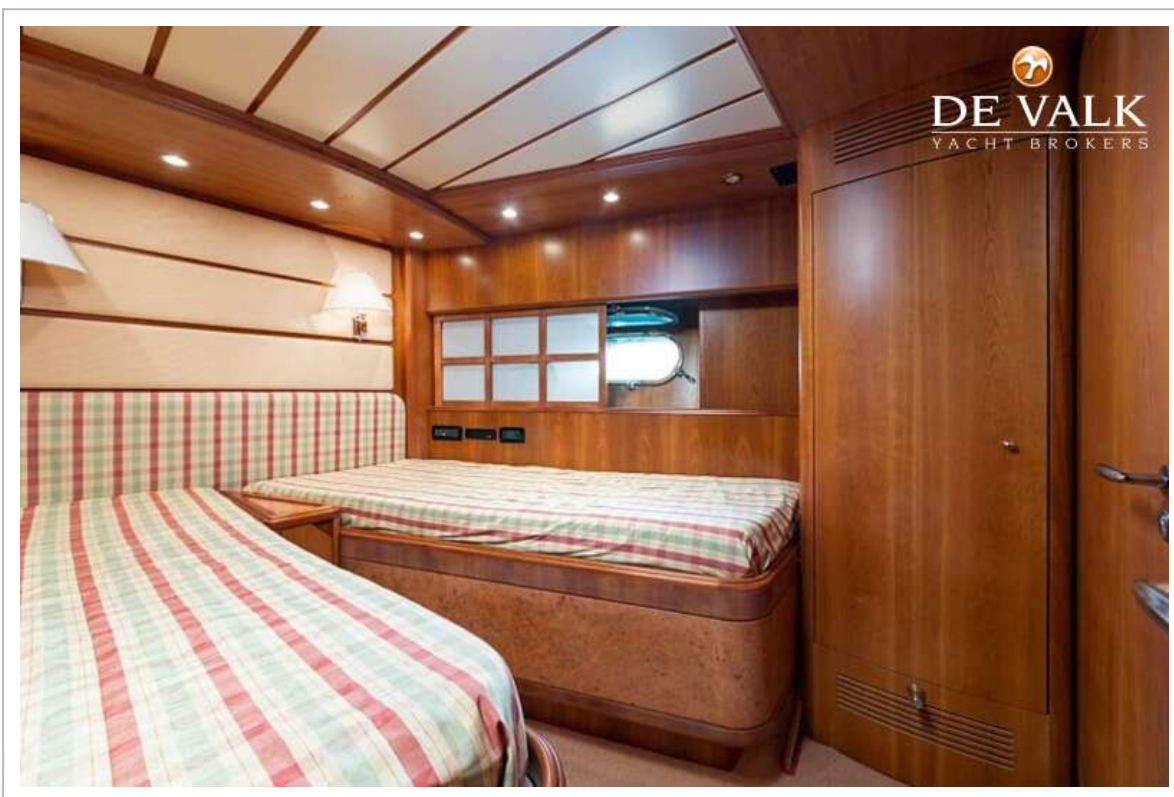
# BENETTI SAIL DIVISION 80 CUSTOM



# BENETTI SAIL DIVISION 80 CUSTOM

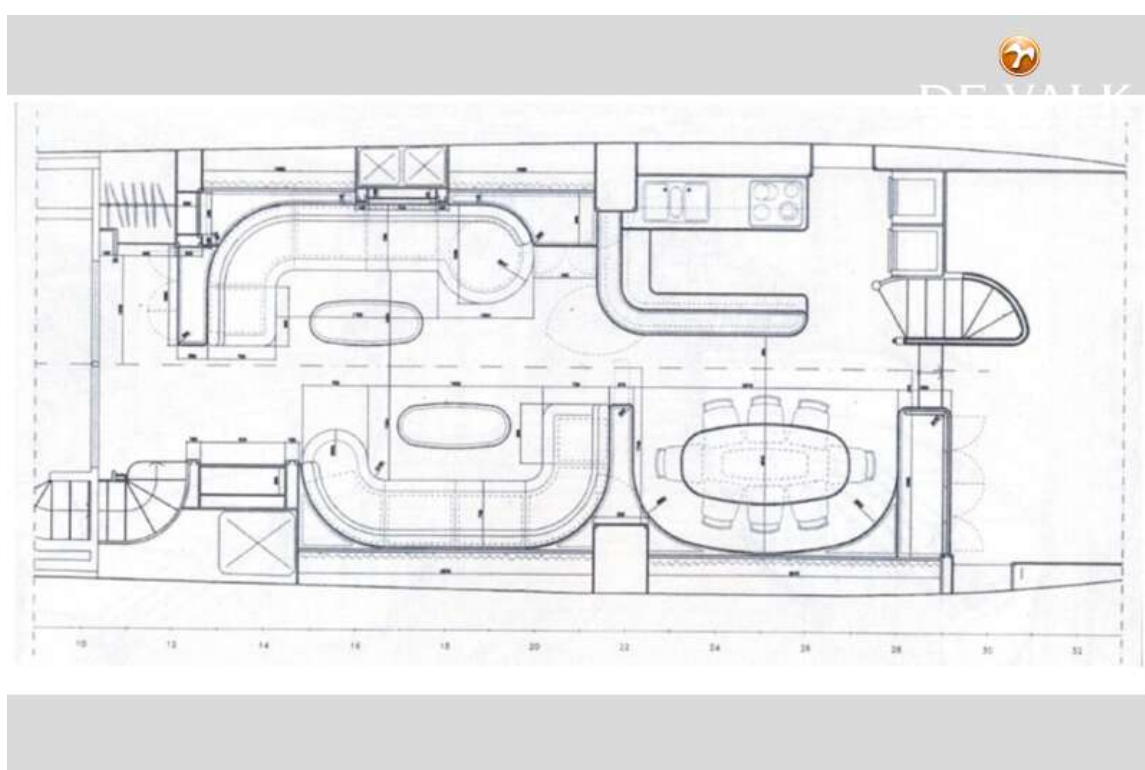


# BENETTI SAIL DIVISION 80 CUSTOM

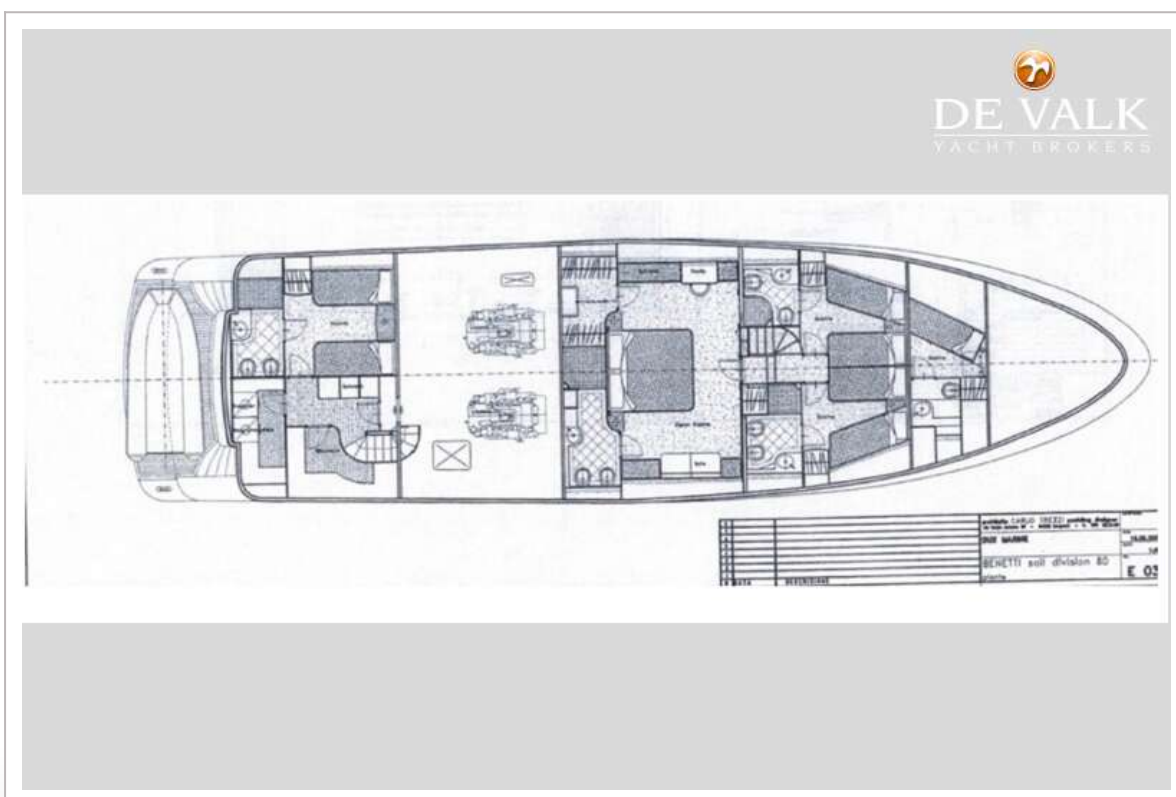
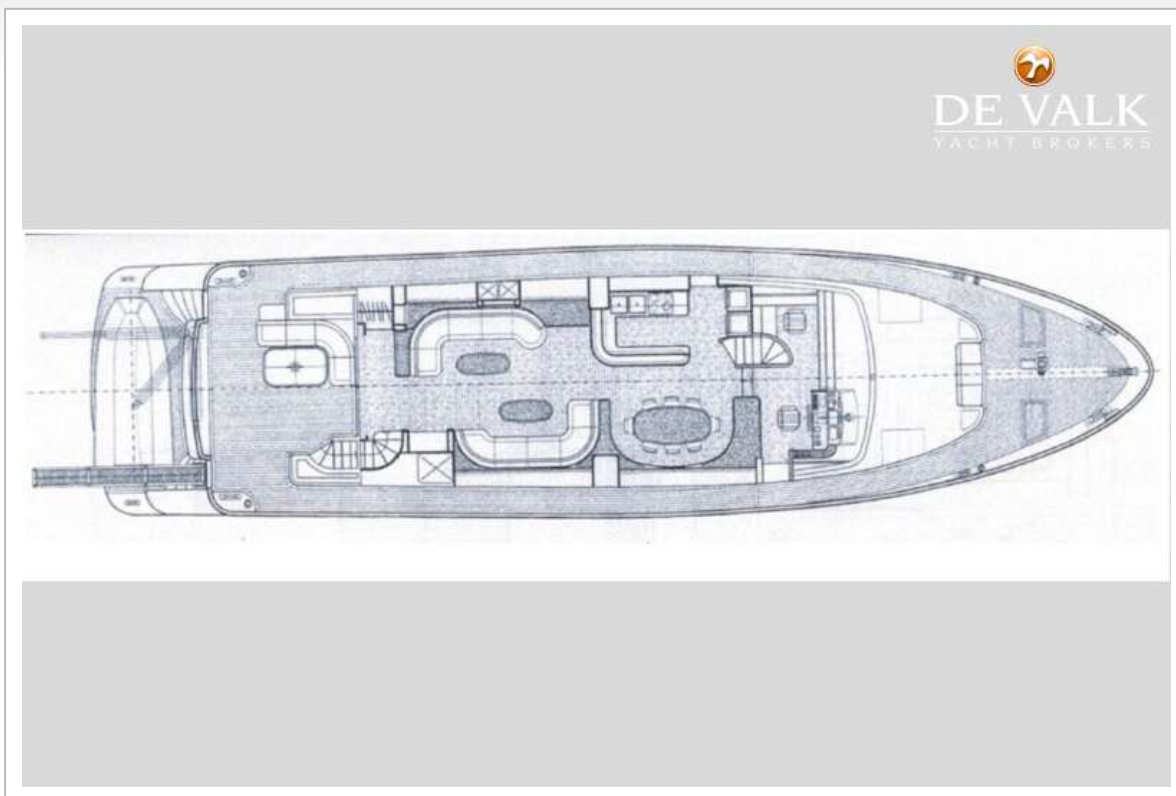


# BENETTI SAIL DIVISION 80 CUSTOM





# BENETTI SAIL DIVISION 80 CUSTOM



# BENETTI SAIL DIVISION 80 CUSTOM

