



DE VALK  
YACHT BROKERS



## LAGOON 42



DE VALK  
YACHT BROKERS

# LAGOON 42

## BROKER'S COMMENTS

This 2024 Lagoon 42 is like new and really stands out with a premium spec built for comfort and freedom at sea. Upgrades include air conditioning, heating, a watermaker, extra fridge/freezer capacity, and two additional berths - perfect for crew, guests or kids. Lagoon's award winning design emphasises sociability: spacious decks, a cockpit to entertain, panoramic windows and four family friendly cabins and four heads. This vessel is a luxurious family cruiser or high yield charter gem. Available now in Palma!

*Oliver Stehula*

## SPECIFICATIONS

<b>Dimensions</b>	12.79 x 7.68 x 1.29 (m)	<b>Builder</b>	Lagoon Yachts
<b>Built</b>	2023	<b>Cabins</b>	4
<b>Material</b>	GRP	<b>Berths</b>	10
<b>Engine(s)</b>	2 x YANMAR 4JH57CR SD diesel	<b>Hp/Kw</b>	2 x 57.00 (hp), 41.95 (kw)
<b>Asking price</b>	€ 589.000 (VAT Not paid)	<b>Lying</b>	at sales office

## CONTACT

<b>Sales office</b>	De Valk Palma	<b>Telephone</b>	+34 971 40 29 11
<b>Address</b>	Port. Cala Nova, Avda. Joan Miro, 327 07015 Palma de Mallorca ES	<b>E-mail</b>	palma@devalk.nl

## DISCLAIMER

These particulars are given in good faith as supplied but cannot be guaranteed.



# LAGOON 42

## GENERAL

<b>Model</b>	LAGOON 42
<b>Type</b>	catamaran sailing yacht
<b>LOA (m)</b>	12,79
<b>Beam (m)</b>	7,68
<b>Draft (m)</b>	1,29
<b>Year built</b>	2023
<b>Launched</b>	2024
<b>Builder</b>	Lagoon Yachts
<b>Country</b>	France
<b>CE norm</b>	A
<b>Hull material</b>	GRP
<b>Hull shape</b>	Twin hull
<b>Bilge keels</b>	Rounded
<b>Superstructure material</b>	GRP
<b>Deck material</b>	GRP
<b>Deck finish</b>	Non-skid
<b>Antifouling (year)</b>	2024
<b>Deckhatch</b>	4 x starboard 4 x port
<b>Flybridge</b>	Raised helm station port side
<b>Flybridge cockpit cover</b>	Full winter covers NEW 2024
<b>Fuel tank (litre)</b>	300L
<b>Fuel tank 2 (litre)</b>	300L
<b>Freshwater tank (litre)</b>	2 x 300L
<b>Wheel steering</b>	Chain steering Dynema
<b>Outside helm position</b>	Raised helm station port side

## ACCOMMODATION

<b>Cabins</b>	4
<b>Berths</b>	10
<b>Crew cabin</b>	2



<b>Crew berths</b>	2
<b>Interior</b>	Wood in Alpi Sand
<b>Floor</b>	Dark oak
<b>Aft deck</b>	Entertaining area
<b>Headroom saloon (m)</b>	2.30
<b>Heating</b>	Webasto S-series with cabin My Touch screens
<b>Air-conditioning</b>	Webasto S-series with cabin My Touch screens
<b>Navigation center</b>	In saloon with electronic control panels
<b>Chart table</b>	In saloon
<b>Sliding door to cockpit</b>	Yes with tinted glass
<b>Galley</b>	Starboard side of saloon
<b>Countertop</b>	Dark grey
<b>Cooker</b>	ENQ gas
<b>Oven</b>	ENQ gas
<b>Extractor</b>	Yes
<b>Fridge</b>	Additional Isotherm 144L in saloon - 2 x Vitrifigo in cockpit
<b>Freezer</b>	Deep freezer in saloon and in saloon fridge
<b>Hot water system</b>	40L boiler
<b>Ice maker</b>	Yes
<b>Owners cabin</b>	Identical owner cabins aft starboard
<b>Bed length (m)</b>	Queen size
<b>Wardrobe</b>	Hanging shelves and drawers with storage under bed
<b>Bathroom</b>	En-suite with shower
<b>Toilet</b>	Yes
<b>Toilet system</b>	Electric
<b>Guest cabin 1</b>	Identical owner cabins aft port
<b>Bed length (m)</b>	Queen size
<b>Wardrobe</b>	Hanging shelves and drawers with storage under bed
<b>Toilet</b>	Yes
<b>Toilet system</b>	Electric
<b>Guest cabin 2</b>	Forward starboard
<b>Bed length (m)</b>	Double



<b>Wardrobe</b>	Hanging shelves and drawers with storage under bed
<b>Bathroom</b>	En-suite
<b>Toilet</b>	Yes
<b>Toilet system</b>	Electric
<b>Guest cabin 3</b>	Forward port
<b>Bed length (m)</b>	Double
<b>Wardrobe</b>	Hanging shelves and drawers with storage under bed
<b>Bathroom</b>	En-suite
<b>Toilet</b>	Yes
<b>Toilet system</b>	Electric
<b>Guest cabin 4</b>	2 x crew single cabins forward
<b>Extra info</b>	USB sockets in all cabins
<b>Extra info</b>	Fans in saloon and cabins

## MACHINERY

<b>No of engines</b>	2
<b>Make</b>	YANMAR
<b>Type</b>	4JH57CR SD
<b>HP</b>	57
<b>kW</b>	41.95
<b>Fuel</b>	diesel
<b>Year installed</b>	2023
<b>Engine hours</b>	3059
<b>Engine cooling system</b>	freshwater heat exchanger
<b>Drive</b>	sail-drive
<b>Engine controls</b>	Throttles at helm
<b>Gearbox</b>	Intergrated
<b>kW</b>	42
<b>Propeller type</b>	Fixed three blade
<b>Manual bilge pump</b>	1 per hull
<b>Electric bilge pump</b>	1 per hull



<b>Electrical installation</b>	220V
<b>Generator</b>	220V Mase 11KVA
<b>Running hours generator</b>	415
<b>Batteries</b>	Engine start: 2 × 110Ah AGM (12V)
<b>Service battery</b>	Service/domestic: 2 × 140Ah AGM (12V)
<b>Solar panel</b>	4 × flexible panels (115W each)
<b>Watermaker</b>	Yes
<b>Extra info</b>	2 x additional service batteries 140Amp + controller

## NAVIGATION

<b>Multi control display</b>	Raymarine Axiom Pro 12 HybridTouch
<b>Depth sounder</b>	2 x Raymarine i70s
<b>VHF</b>	Raymarine Ray63 VHF
<b>Autopilot</b>	2 x Raymarine i70s
<b>Rudder angle indicator</b>	Displayed on P70s autopilot control panel
<b>Plotter/GPS</b>	Intergrated into Raymarine Axiom Pro
<b>AIS receiver</b>	Raymarine
<b>Extra info</b>	2 x Yanmar B25 Engine control monitors

## EQUIPMENT

<b>Cockpit cover</b>	Yes NEW 2024
<b>Bimini</b>	Yes
<b>Cockpit cushions</b>	Dark grey with sunlounger intergated
<b>Cockpit table</b>	Yes
<b>Boarding ladder</b>	Yes
<b>Gangway</b>	Yes
<b>Anchor</b>	25kg
<b>Anchor chain</b>	85m
<b>Anchor 2</b>	25kg
<b>Chain counter</b>	Quick QNC chain counter
<b>Windlass</b>	Yes



Deck wash	Sea water / fresh water
Dinghy	ZAR mini
Outboard	10HP Honda
Davits	S/steel dinghy hoist system with manual winch
Pulpit	Yes with wooden seats
Life raft (pers)	Fully serviced
Last life raft survey	2024
Lifejackets	Yes
TV	In saloon
TV receiver	TV Antenna
iPod connection	Fusion Apollo MS-RA 670 Player
Surround Sound System	Fusion RA70N
Cockpit speakers	2 x
Speakers in salon	2 x
Extra info	Sunlounging area with 2 x lifting backrest on roof and foredeck

## RIGGING

Rigging	Fractional sloop
Standing rigging	Stainless steel wire
Brand mast	Selden
Material mast	Aluminium deck stepped
Spreaders	1 pair
Mainsail	Extra robust dacron Elvstrøm sail
Mainsail cover	Lazy bag with lazy jacks
Battcars	Standard track
Fully battened mainsail	Yes
Furling boom	Headsail furler only
Jib	Self tacking Elvstrøm furling jib
Primary sheet winch	3 x Harken 46.2ST
Reefing winch	Reef lines led back to the starboard Harken 46.2ST winch
Multifunctional winches	All winches multifunctional



Extra info

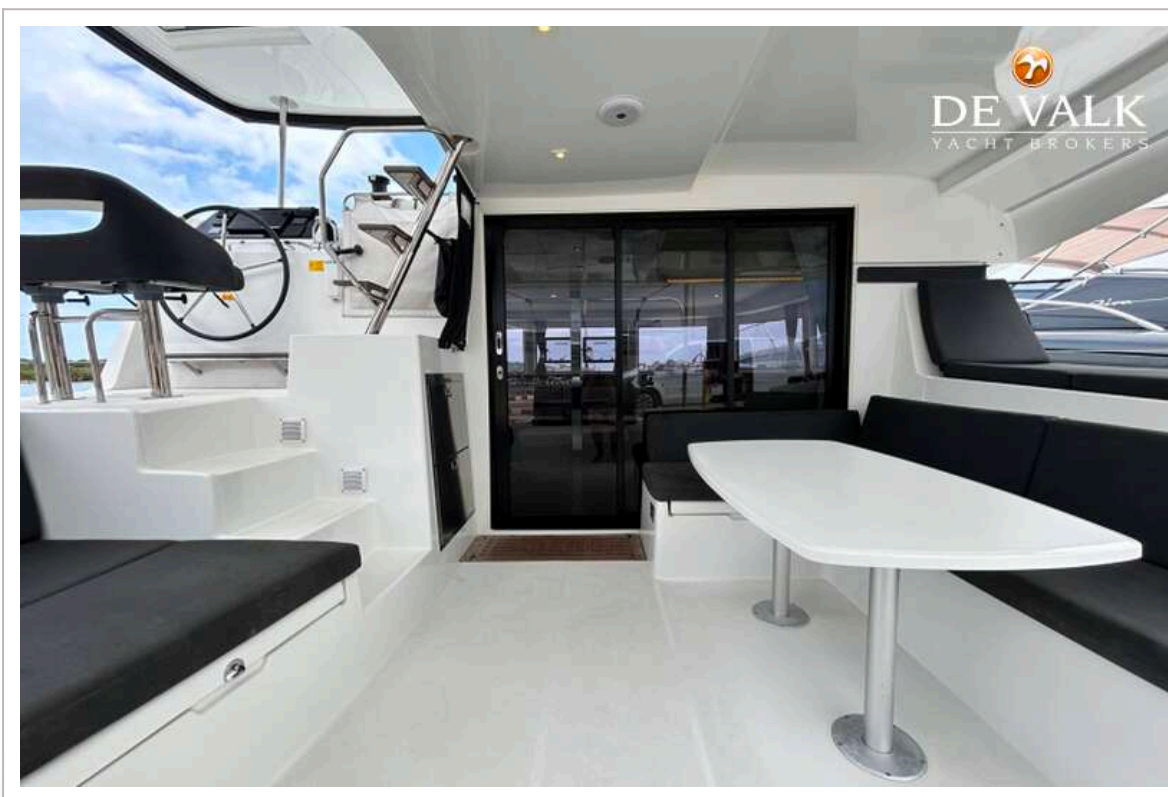
82m<sup>2</sup> sail area



# LAGOON 42



# LAGOON 42



# LAGOON 42



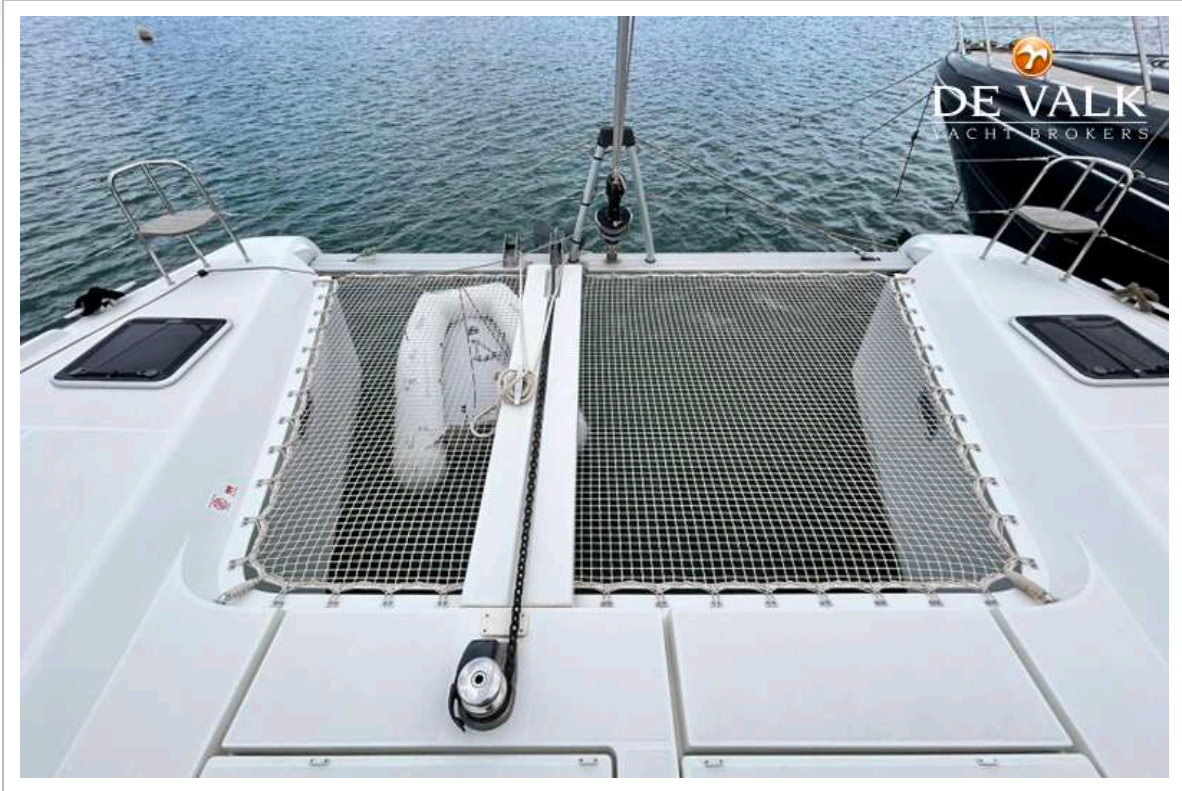
# LAGOON 42



# LAGOON 42



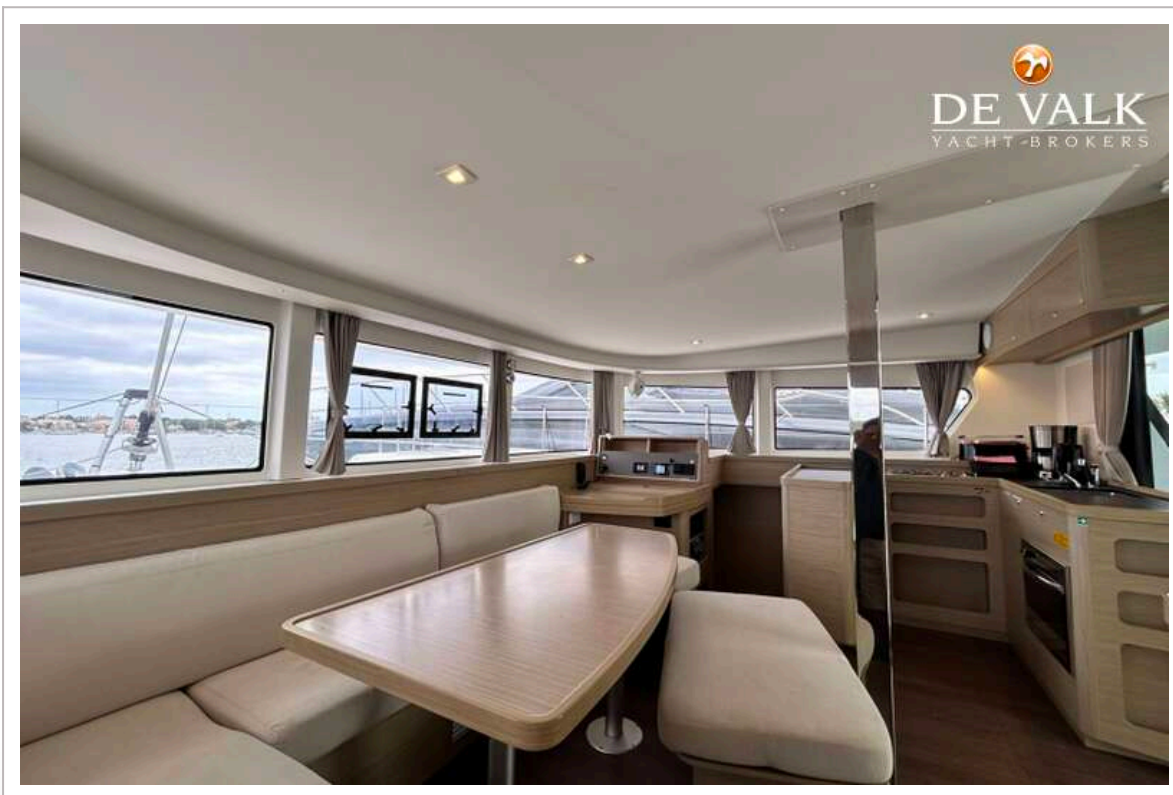
# LAGOON 42



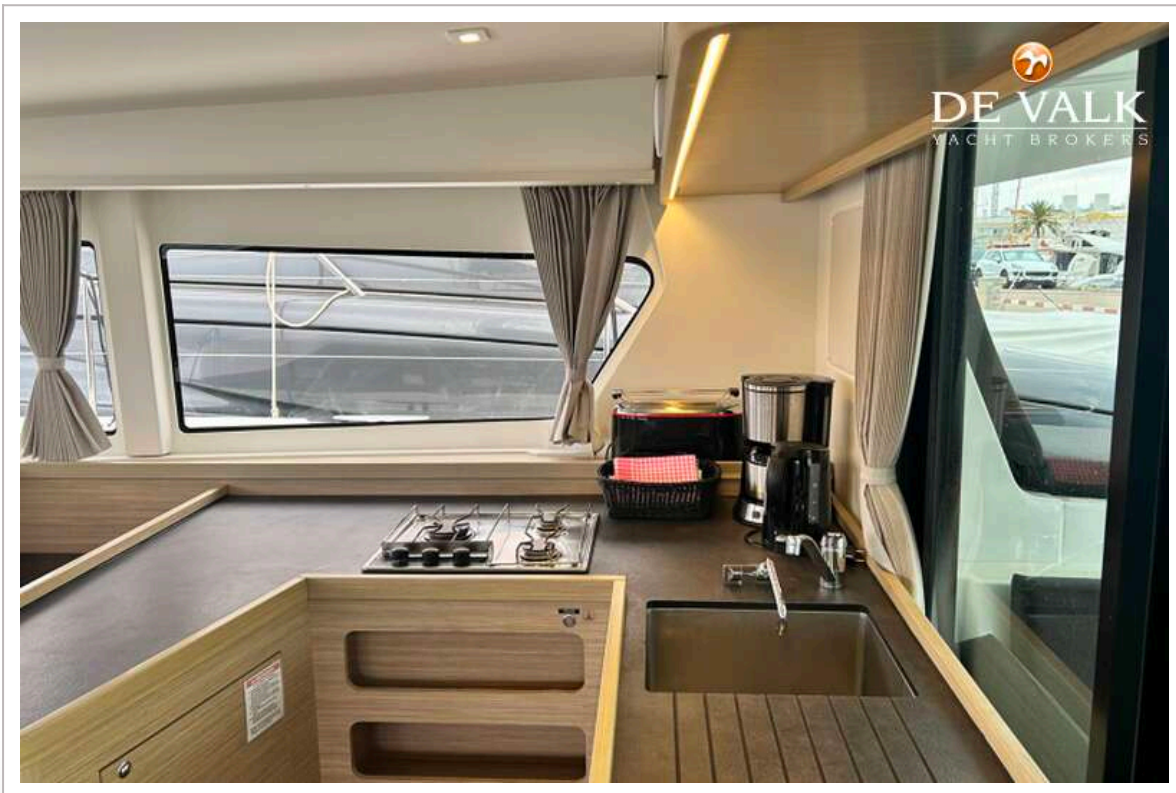
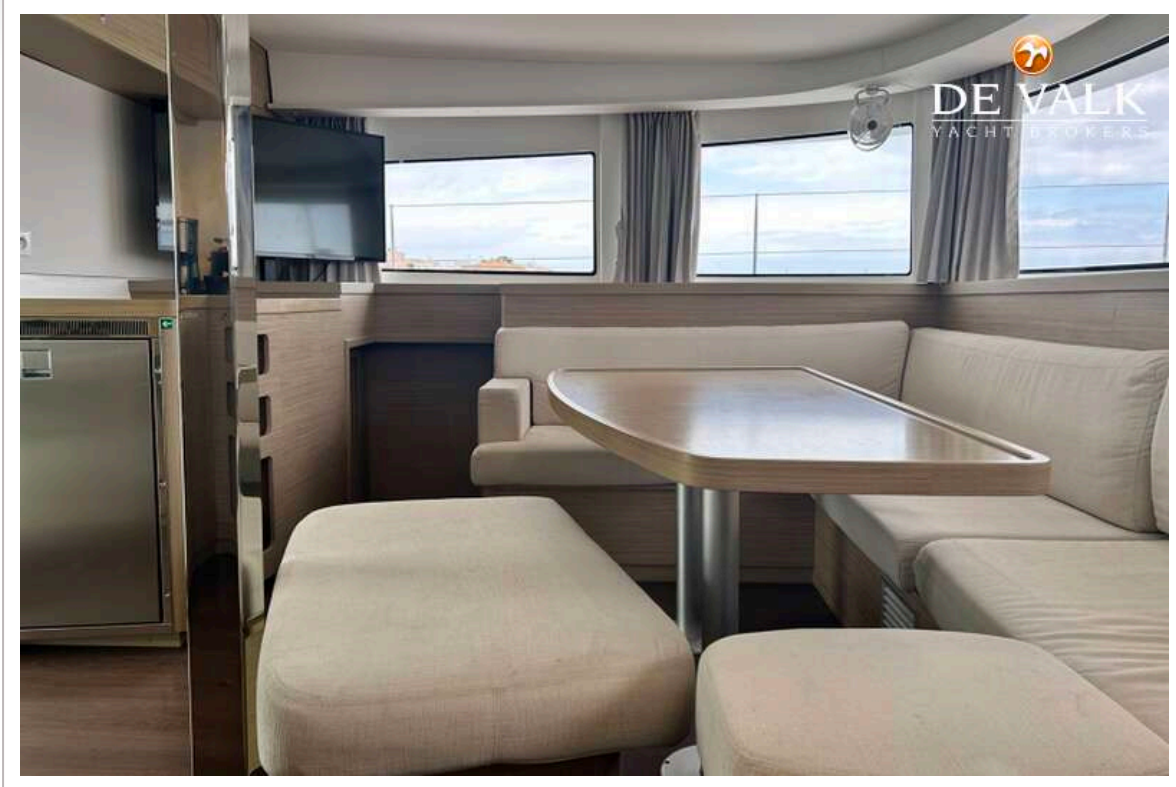
# LAGOON 42



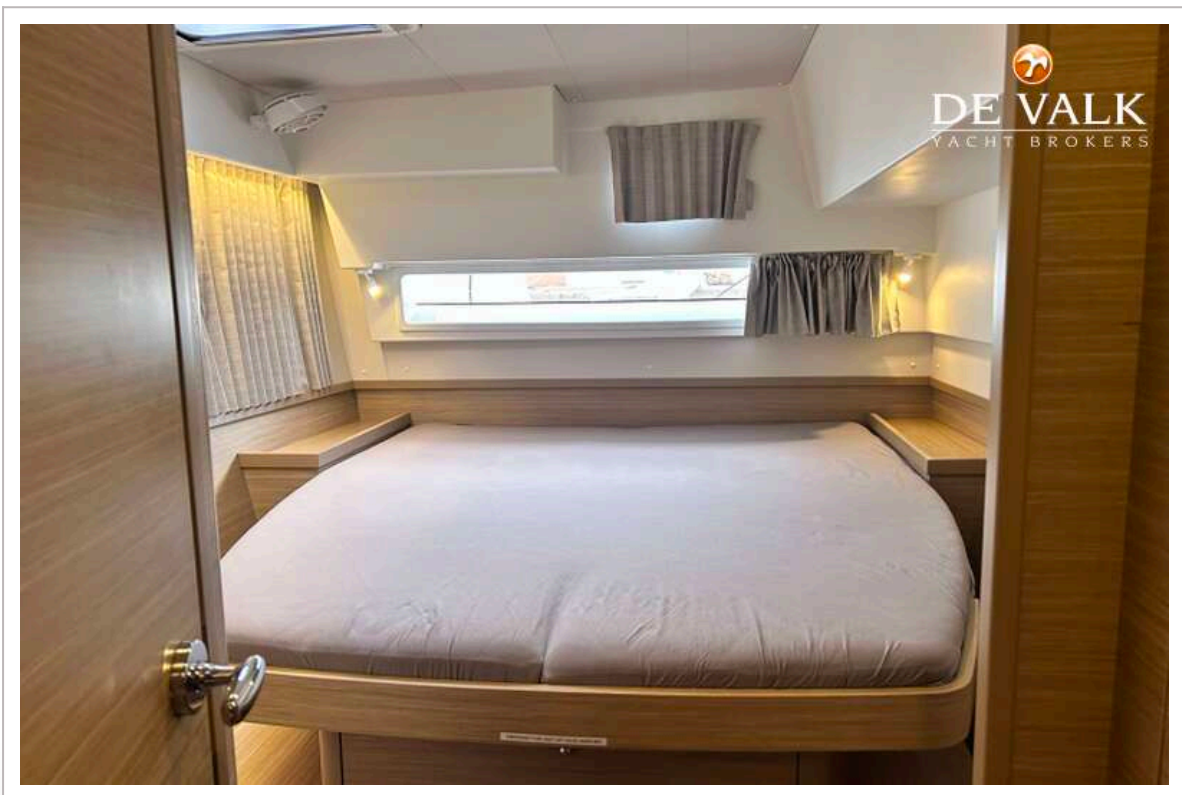
# LAGOON 42

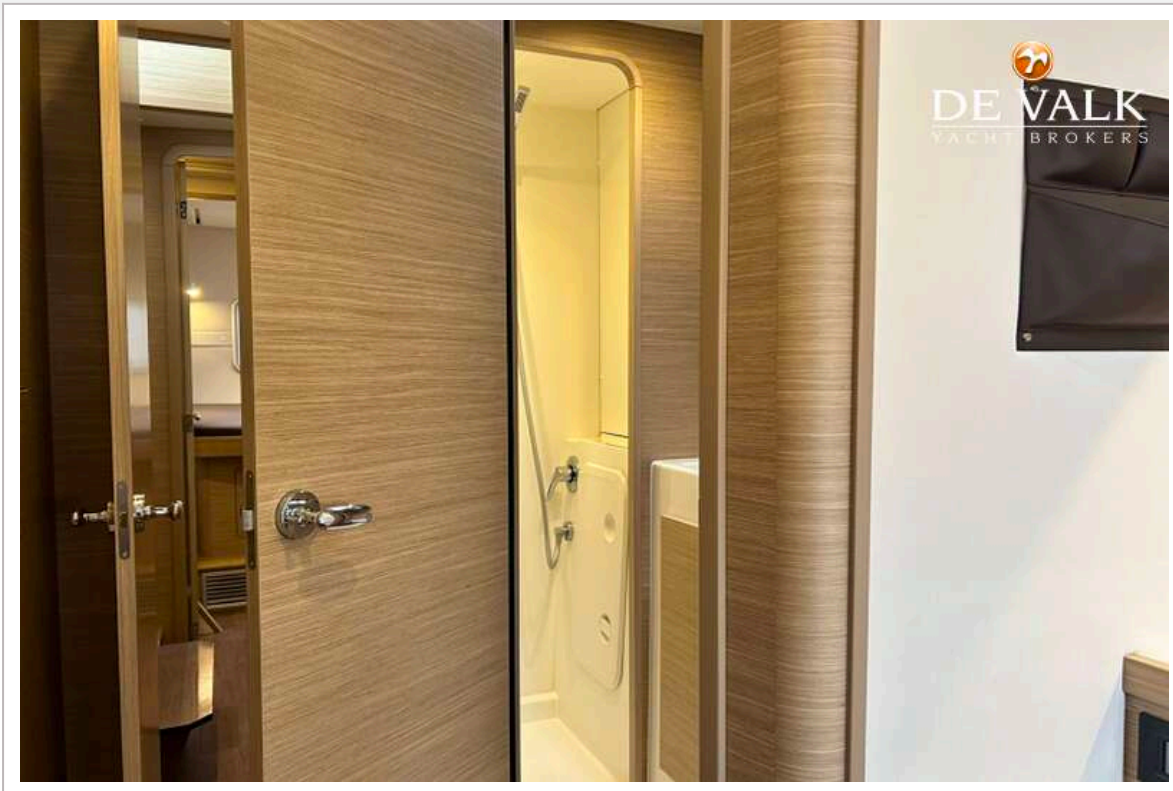


# LAGOON 42

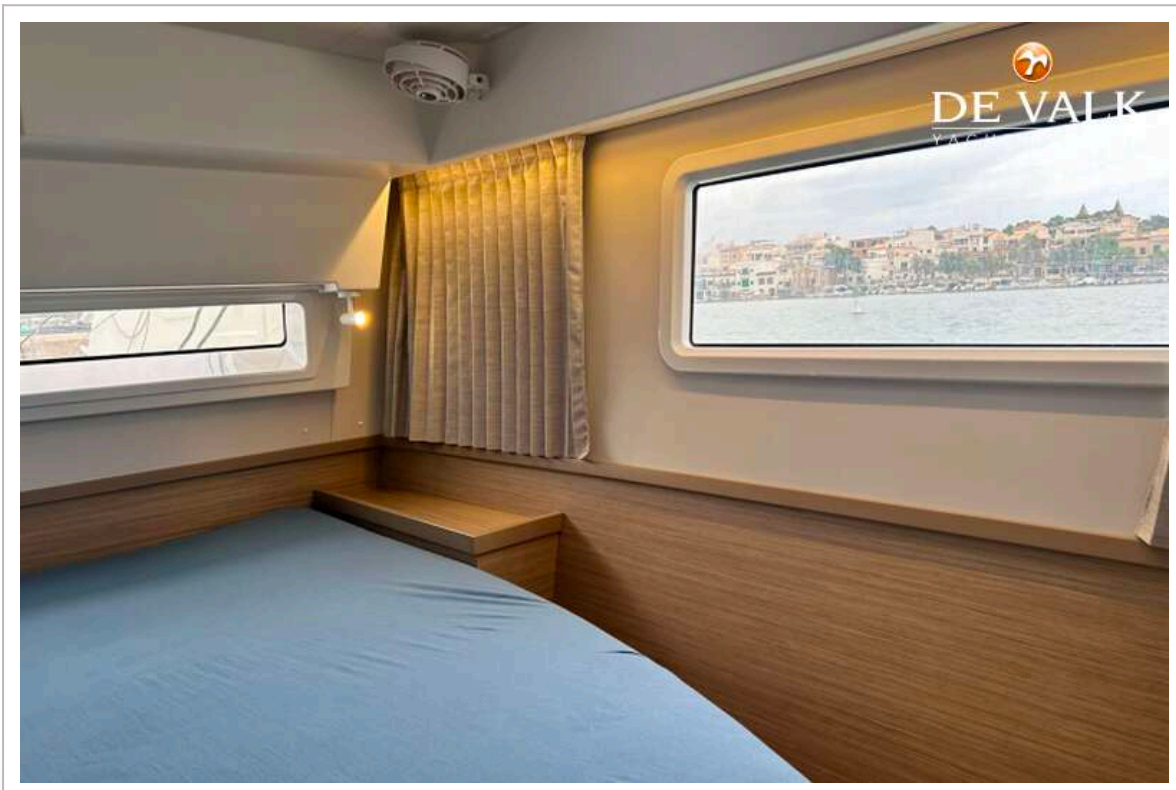


# LAGOON 42





# LAGOON 42



# LAGOON 42



# LAGOON 42



# LAGOON 42

