



DE VALK  
YACHT BROKERS



## MOTORJACHT GAIA



DE VALK  
YACHT BROKERS

## BROKER'S COMMENTS

New deck, machinery, electrics/electronics, plumbing, anchors and chain, windlass, bulbous bow, and furnishings. Originally a high-seas commercial trawler launched in 1973, she was purchased as an empty hull with integrated fuel tanks but without deck, superstructure, or machinery - allowing for a complete keel-up refit. This refit was completed in 2010, with minimized future maintenance as a guiding principle.

*Hans Visser*

## SPECIFICATIONS

<b>Dimensions</b>	24.90 x 6.20 x 2.80 (m)	<b>Builder</b>	Astilleros de Paraguana
<b>Built</b>	1973	<b>Cabins</b>	5
<b>Material</b>	Steel	<b>Berths</b>	8
<b>Engine(s)</b>	1 x Baudouin V12P15 diesel	<b>Hp/Kw</b>	430.00 (hp), 316.48 (kw)
<b>Asking price</b>	\$ 799.000 (VAT Exempt)	<b>Lying</b>	elsewhere / Not at sales office

## CONTACT

<b>Sales office</b>	De Valk Hindeloopen B.V.	<b>Telephone</b>	+31 514 52 40 00
<b>Address</b>	Oosterstrand 1 8713 JS Hindeloopen NL	<b>E-mail</b>	hindeloopen@devalk.nl

## DISCLAIMER

These particulars are given in good faith as supplied but cannot be guaranteed.



## GENERAL

<b>Model</b>	MOTORJACHT GAIA
<b>Type</b>	motor yacht
<b>LOA (m)</b>	24,90
<b>LWL (m)</b>	22,00
<b>Beam (m)</b>	6,20
<b>Draft (m)</b>	2,80
<b>Year built</b>	1973
<b>Launched</b>	Relaunched after refit 2010
<b>Builder</b>	Astilleros de Paraguana
<b>Country</b>	Venezuela
<b>Designer</b>	Astilleros de Paraguana
<b>Displacement (t)</b>	128
<b>Gross tonnage</b>	109
<b>Net tonnage</b>	49,4
<b>Hull material</b>	steel
<b>Hull colour</b>	white
<b>Hull thickness (mm)</b>	Naval steel grade A131 10 & 12,5 mm
<b>Hull shape</b>	hard chine
<b>Keel type</b>	25 mm keel plate
<b>Superstructure material</b>	aluminium
<b>Superstructure (mm)</b>	6 mm
<b>Deck plate thickness (mm)</b>	6 mm   new 2004
<b>Rubbing strake</b>	steel
<b>Deck material</b>	steel   6 mm   new 2004
<b>Deck finish</b>	non-skid paint
<b>Superstructure deck finish</b>	non-skid paint
<b>Cockpit deck finish</b>	non-skid paint
<b>Antifouling (year)</b>	2024
<b>Dorades</b>	2x
<b>Window frame</b>	Custom aluminium



<b>Window material</b>	10 mm glass
<b>Deckhatch</b>	3 x
<b>Portholes</b>	38 of which 15 are opening
<b>Fuel tank (litre)</b>	steel   70.000 ltr. in 7 tanks
<b>Level indicator (fuel tank)</b>	Floscan M750 electronic tachometer and fuel flow computer
<b>Fuel daytank (litre)</b>	steel   400 ltr.
<b>Level indicator (daytank)</b>	yes
<b>Freshwater tank (litre)</b>	steel   5.300 ltr. Plus 1.500 ltr. in bulbous bow
<b>Level indicator (freshwater)</b>	yes
<b>Blackwater tank (litre)</b>	steel   2.000 ltr. epoxy coated
<b>Wheel steering</b>	hydraulic  Jastram pump & oversized double acting cylinders Powersteer Pto
<b>Inside helm position</b>	yes
<b>Emergency tiller</b>	yes
<b>More info on hull</b>	Hull stripped bear in 2010 and fully rebuilt
<b>Extra info</b>	Good quality s/s locks throughout
<b>Extra info</b>	Bulbous Bow
<b>Extra info</b>	Stainless steel stanchions, bulwarks, hawse pipes, cap rails supports

## ACCOMMODATION

<b>Cabins</b>	5
<b>Berths</b>	8
<b>Interior</b>	mahogany
<b>Layout</b>	Professional
<b>Floor</b>	Tile and/or carpet
<b>Aft deck</b>	yes
<b>Pilot house</b>	yes
<b>Deck saloon</b>	yes
<b>Saloon</b>	yes
<b>Headroom saloon (m)</b>	2,00 mtr.
<b>Air-conditioning</b>	reverse cycle airco   Carrier Multi split converter 2018



Navigation center	yes
Chart table	yes
Dining room	For 8
Opening door to aft deck	yes
Galley	yes
Countertop	granite
Sink	stainless steel
Cooker	Electrolux stainless 4 hub
Oven	Integrated Electrolux Stove/oven/Grill
Extractor	yes
Microwave	Severin 1300 W
Fridge	Mastertech 364 ltr.
Freezer	Sundancer 24 V Deep freeze
Hot water system	220V
Water pressure system	electrical   220 Vac / 24 vdc
Dishwasher	Fridaire space saver
Coffee maker	yes
Crockery	yes
Owners cabin	yes
Bed length (m)	2 mtr.
Wardrobe	hanging/drawers/shelves
Bathroom	Owners bathroom
Toilet	yes
Toilet system	electric
Wash basin	yes
Shower	en suite
Bath tub	en suite
Guest cabin 1	double bed
Bed length (m)	2 mtr.
Wardrobe	hanging and shelves
Bathroom	shared   Gast bathroom 1
Toilet	yes



<b>Toilet system</b>	electric
<b>Wash basin</b>	yes
<b>Shower</b>	yes
<b>Guest cabin 2</b>	double bed
<b>Bed length (m)</b>	2 mtr.
<b>Wardrobe</b>	hanging and shelves
<b>Bathroom</b>	shared   Gast bathroom 2
<b>Toilet</b>	yes
<b>Toilet system</b>	electric
<b>Wash basin</b>	yes
<b>Shower</b>	yes
<b>Guest cabin 3</b>	single bed
<b>Bed length (m)</b>	2 mtr.
<b>Wardrobe</b>	hanging and shelves
<b>Guest cabin 4</b>	single bed
<b>Bed length (m)</b>	2 mtr.
<b>Wardrobe</b>	hanging and shelves
<b>Extra info</b>	Two shared heads with showers on the main deck.
<b>Extra info</b>	Two large workshops below deck equipped with machine shop tools.

## MACHINERY

<b>No of engines</b>	1
<b>Make</b>	Baudouin
<b>Type</b>	V12P15
<b>HP</b>	430
<b>kW</b>	316.48
<b>Fuel</b>	diesel
<b>Year installed</b>	2010
<b>Year of overhaul</b>	2010
<b>Maximum speed (kn)</b>	11



<b>Cruising speed (kn)</b>	8,5
<b>Range (nm)</b>	18000
<b>Engine cooling system</b>	freshwater heat exchanger
<b>Drive</b>	shaft
<b>Gearbox</b>	5:1 Baudouin marine gear
<b>Engine controls</b>	bowden cable
<b>Bowthruster</b>	hydraulic   15 hp with 14" tube
<b>Exhaust</b>	Stainless wet exhaust with unlimited dry-running capability
<b>Propeller type</b>	fixed   Baudouin
<b>Propeller blades</b>	4
<b>Propeller shaft material</b>	stainless steel
<b>Shaft lubrication</b>	Baudouin oil-lubricated tunnel
<b>Electric bilge pump</b>	yes
<b>Electrical installation</b>	24 VDC and 110/220 VAC throughout vessel
<b>Generator</b>	Perkins 4.256 40 KVA 120/240 split phase and 240, 3 Phase
<b>Running hours generator</b>	1.467 hours
<b>Generator 2</b>	Kubota 19 KVA 120/240 split phase
<b>Running hours generator 2</b>	374
<b>Batteries</b>	3 banks of lifepo4 prismatic batteries total capacity 1,496 amp/hrs @ 25 VDC
<b>Battery charger/inverter</b>	Magnum sine-wave 4,000 watt inverter/charger
<b>Solar panel</b>	60 amp/24 VDC solar system on top-deck with Outback controllers
<b>Shorepower</b>	Charles Industries 11KVA universal isolation transformer
<b>Watermaker</b>	New 6.000 liter/day
<b>Extra info</b>	Generator 3: 12 KVA night generator in forepeak   Hours 1963
<b>Extra info</b>	All combustion engines have indefinite dry-runcapability

## NAVIGATION

<b>Compass</b>	yes
<b>Forw. looking depth sounder</b>	Furuno FCV-600L colour LCD sounder
<b>Windset</b>	Raymarine ST40 wind instrument



<b>VHF</b>	Icom M-423G VHF with DSC
<b>Autopilot</b>	Furuno FAP 5001
<b>Radar</b>	Furuno FR-2125 72 NM colour radar & Furuno DRS 25 X-class radar
<b>Plotter/GPS</b>	Furuno NAVNET MDF 12" plotter   Garmin 741 GPS chart-plotter
<b>AIS receiver</b>	Raymarine AIS receiver
<b>Transmitter</b>	Icom M-700 SSB with AT 130 tuner
<b>Camera</b>	8 camera monitoring system expandable to 16
<b>Navigation lights</b>	yes
<b>Loudhailer</b>	Icom hailer and electronic foghorn in VHF

## EQUIPMENT

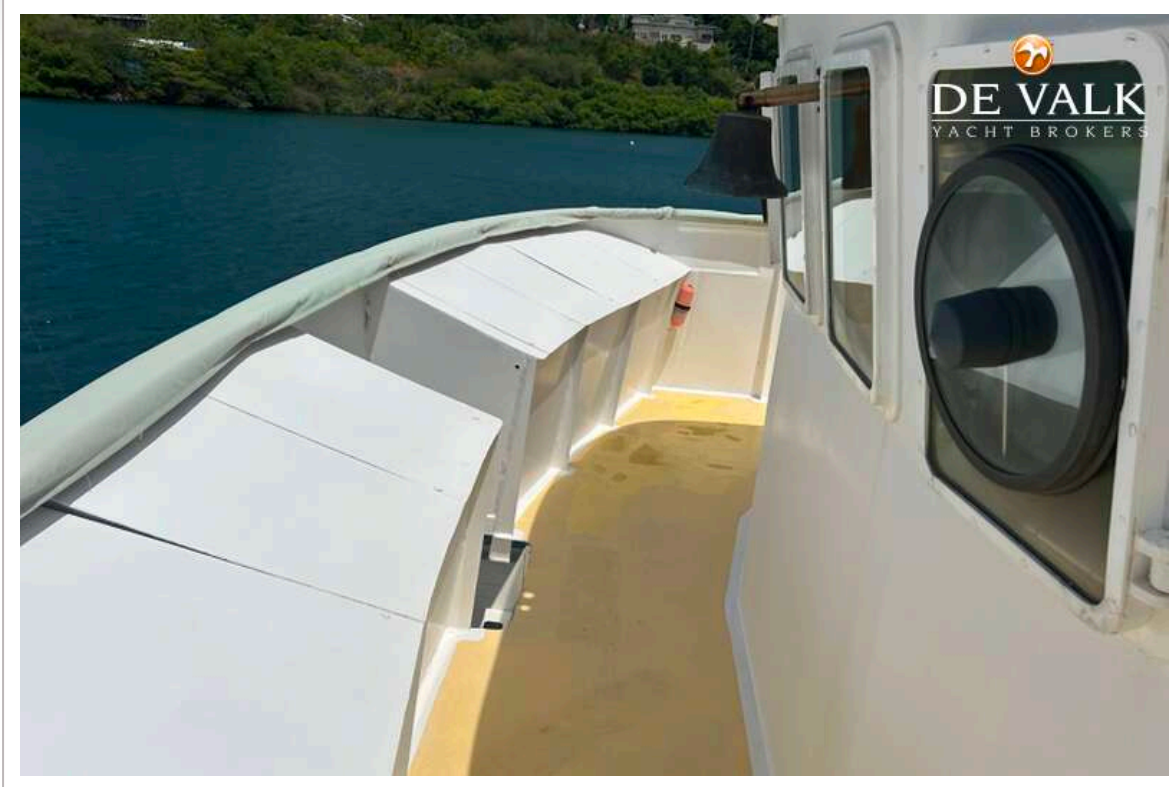
<b>Boarding ladder</b>	yes
<b>Anchor</b>	Bruce   105 lbs
<b>Anchor chain</b>	3 shots 3/4" stud-link chain to port
<b>Anchor 2</b>	Bruce   105 lbs
<b>Anchor chain</b>	3 shots 5/8" stud-link chain to SB
<b>Windlass</b>	hydraulic   15 hp windlass with 2 gypsies and 3 drums
<b>Deck wash</b>	yes
<b>Dinghy</b>	New Caribe Marine 4.20 and 3.80 double-bottom alloy RIB's
<b>Outboard</b>	Yamaha 4 hp, Yamaha 8 hp and Tohatsu 20 hp
<b>Sea railing</b>	yes
<b>Extra info</b>	3 phase 220 VAC Ingersol Rand dive compressor



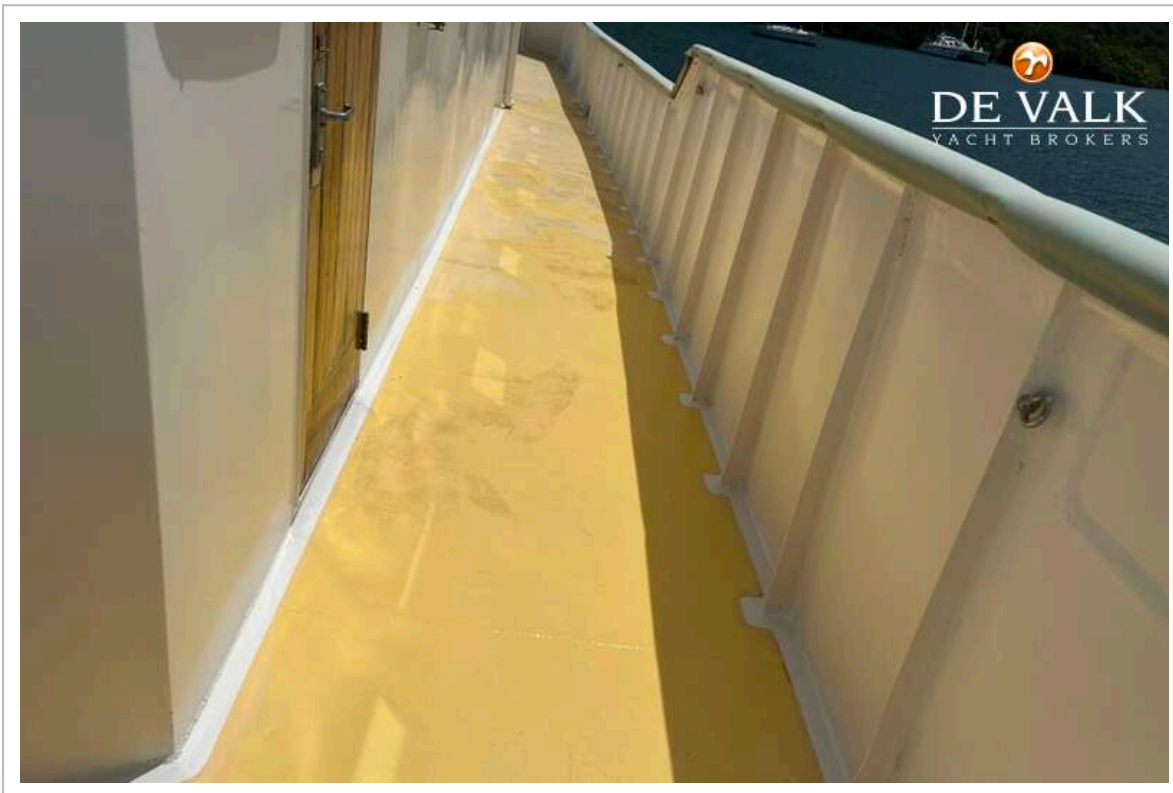
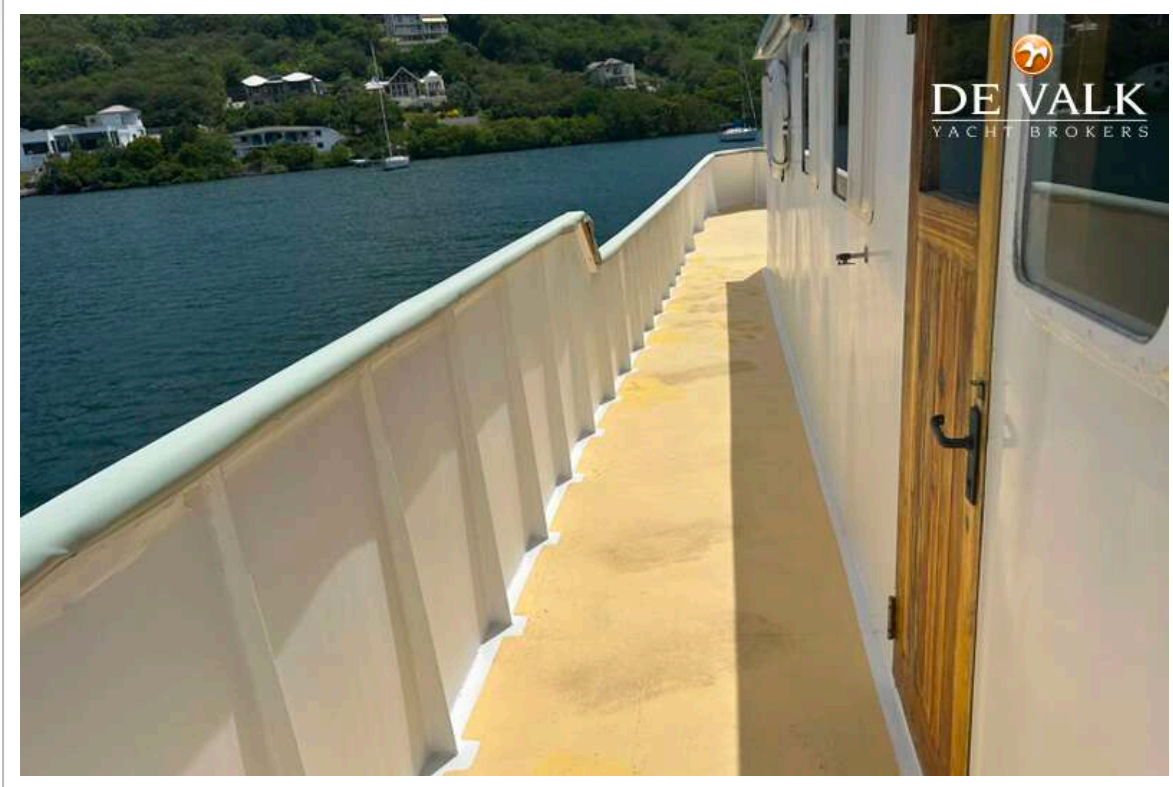
# MOTORJACHT GAIA



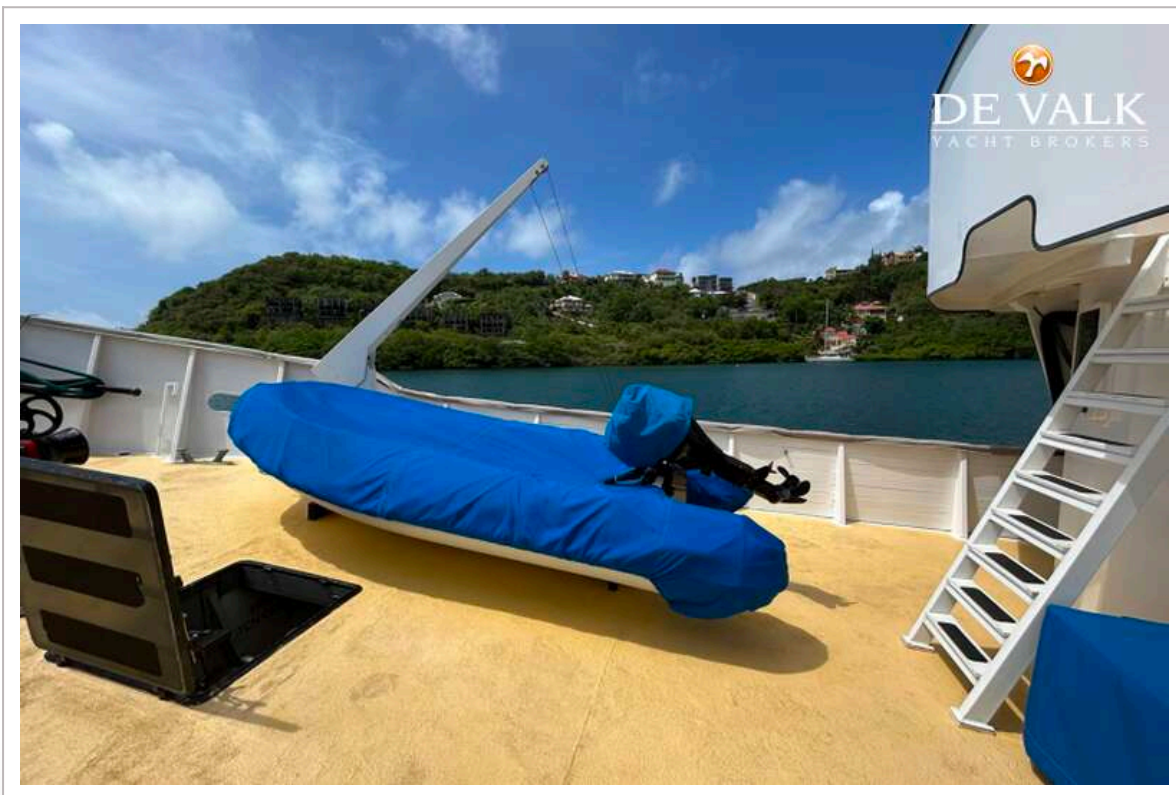
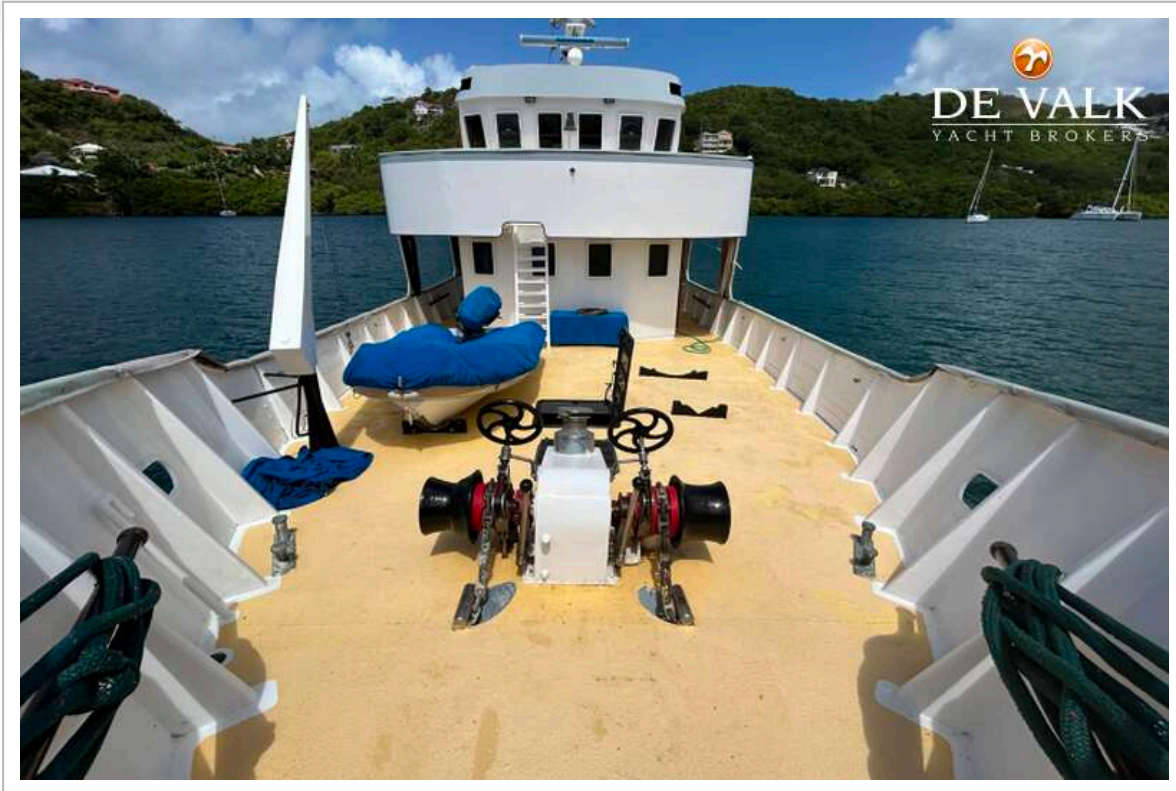
# MOTORJACHT GAIA



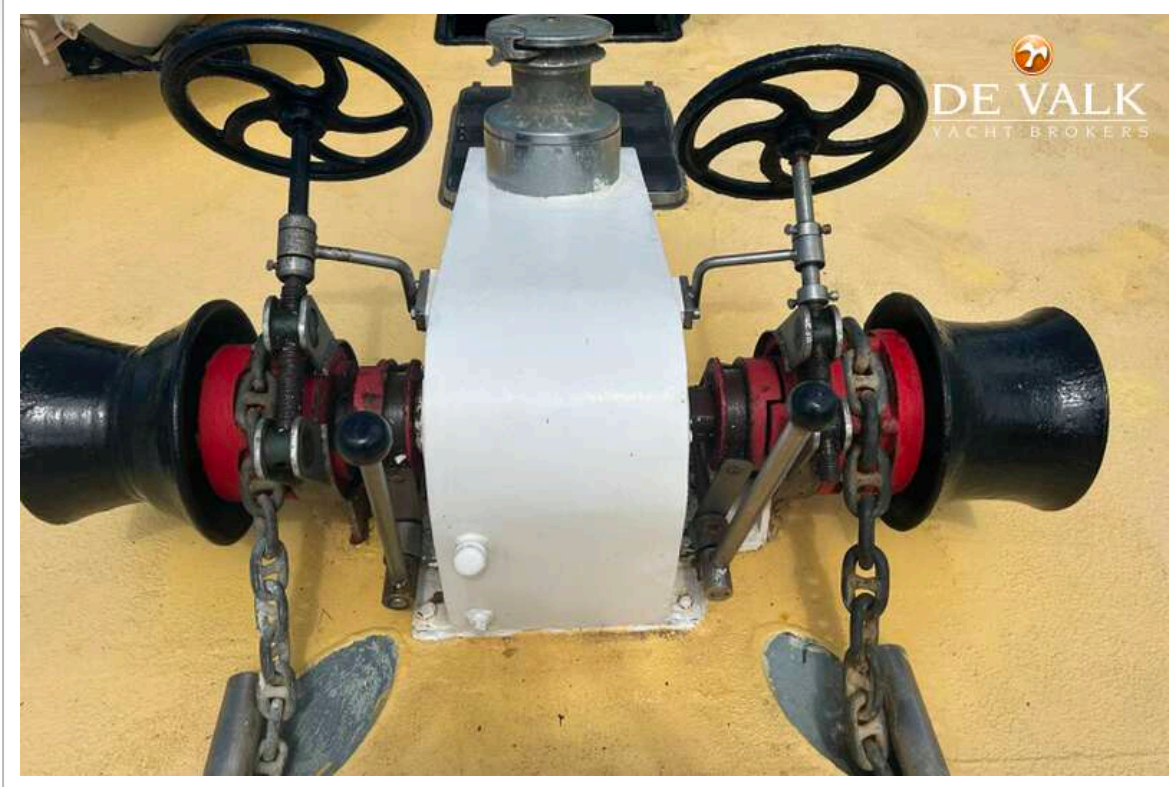
# MOTORJACHT GAIA



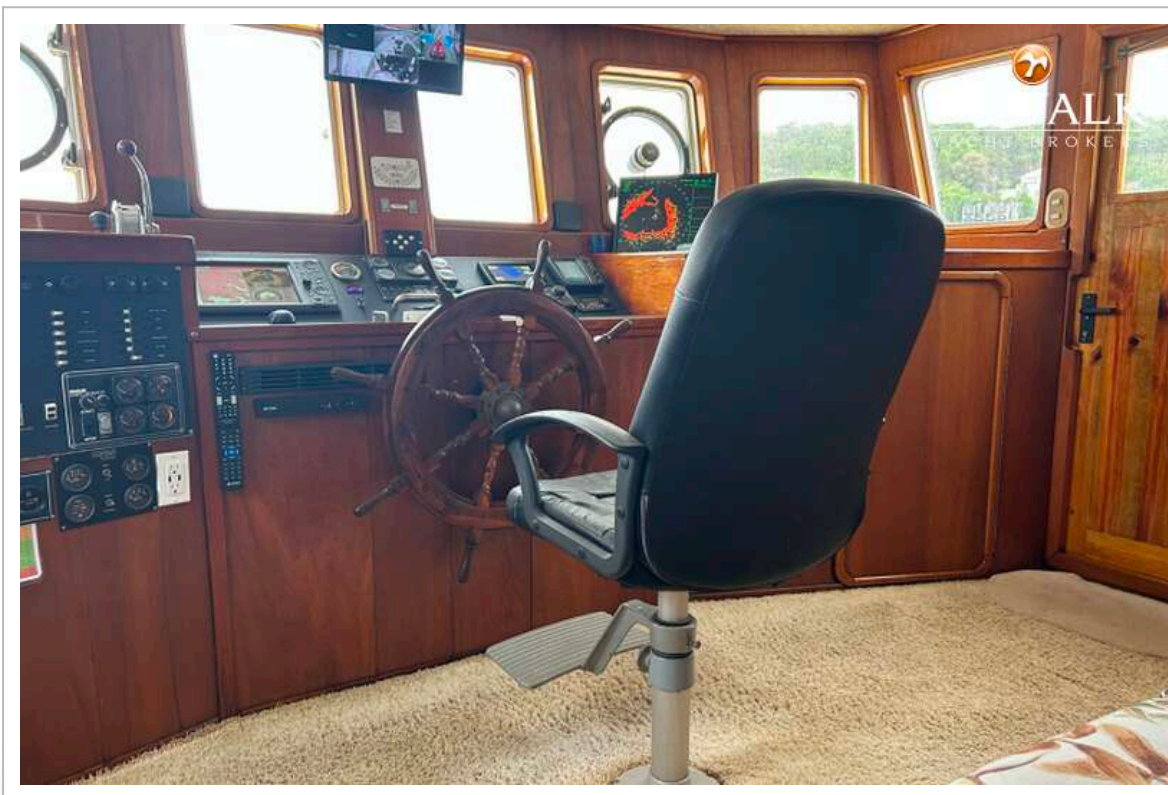
# MOTORJACHT GAIA



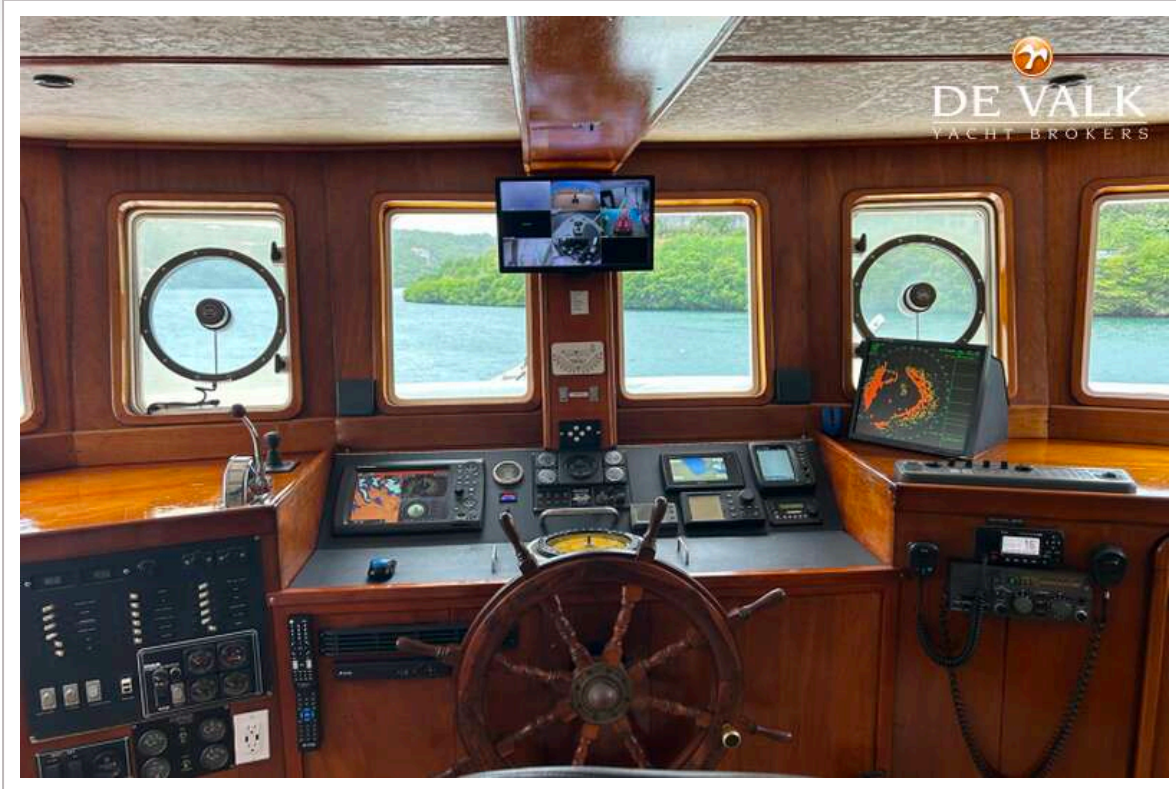
# MOTORJACHT GAIA



# MOTORJACHT GAIA



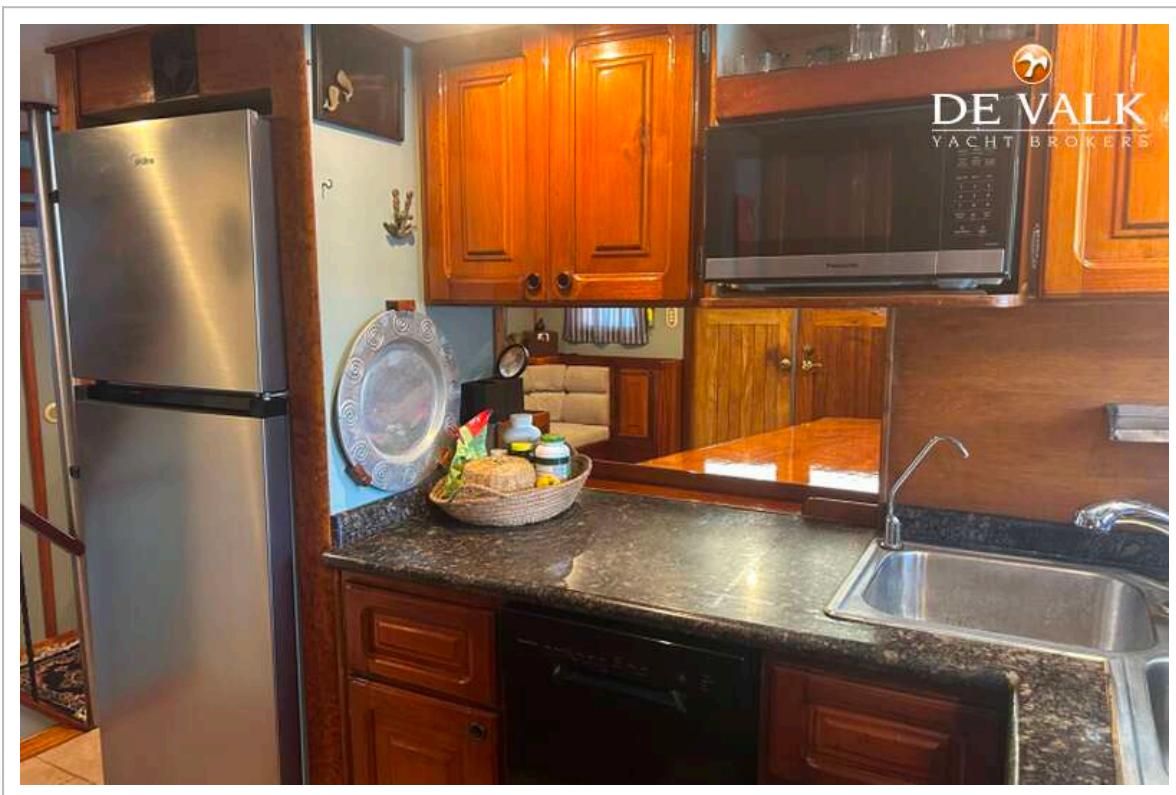
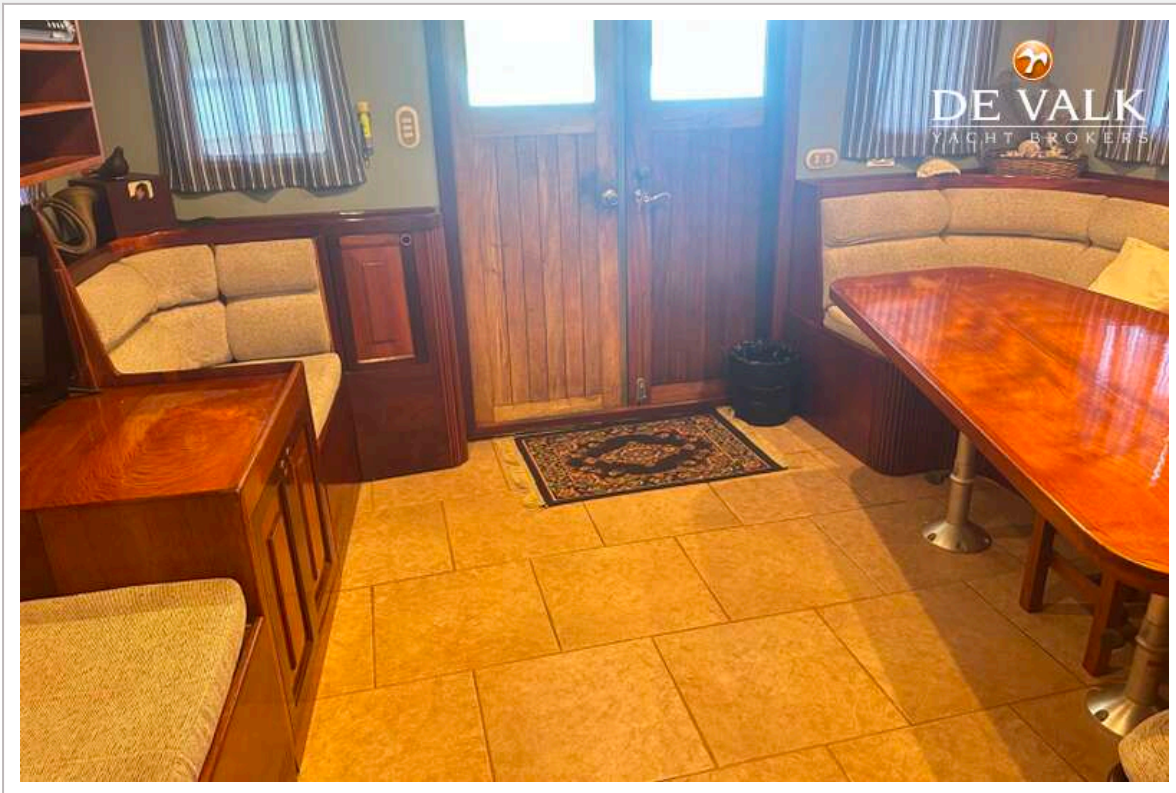
# MOTORJACHT GAIA



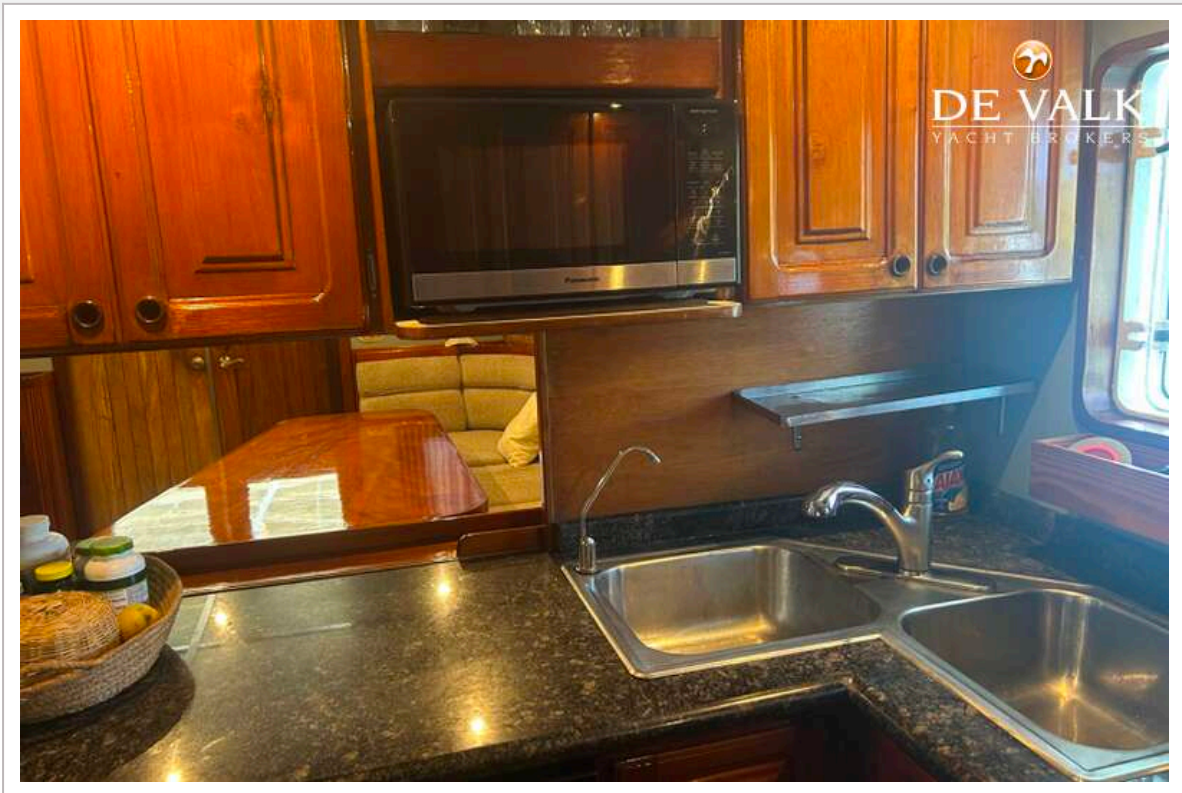
# MOTORJACHT GAIA



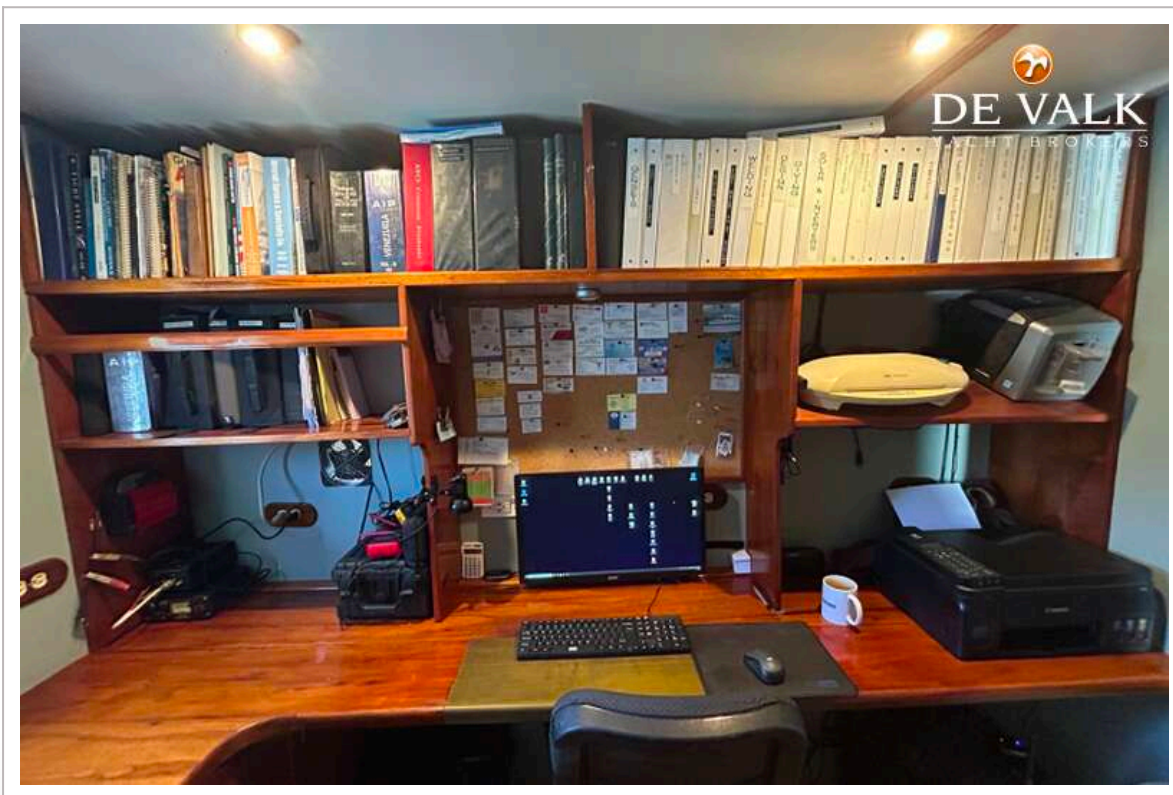
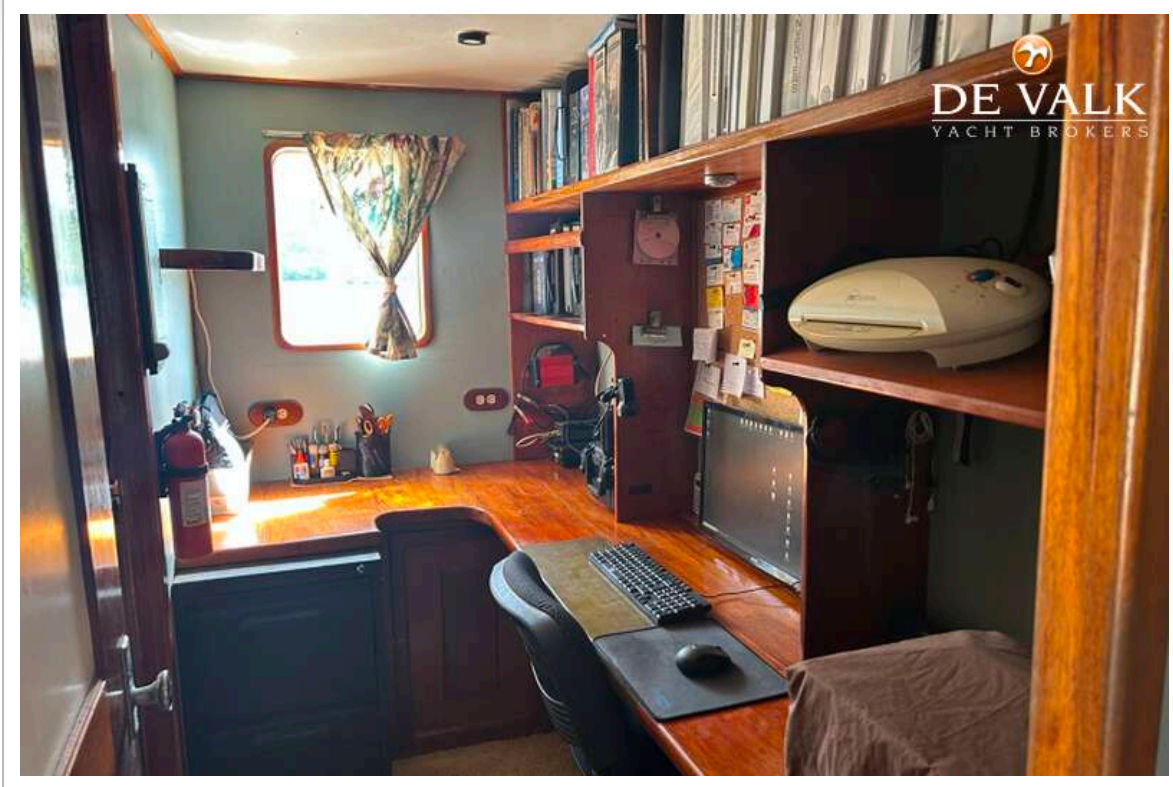
# MOTORJACHT GAIA



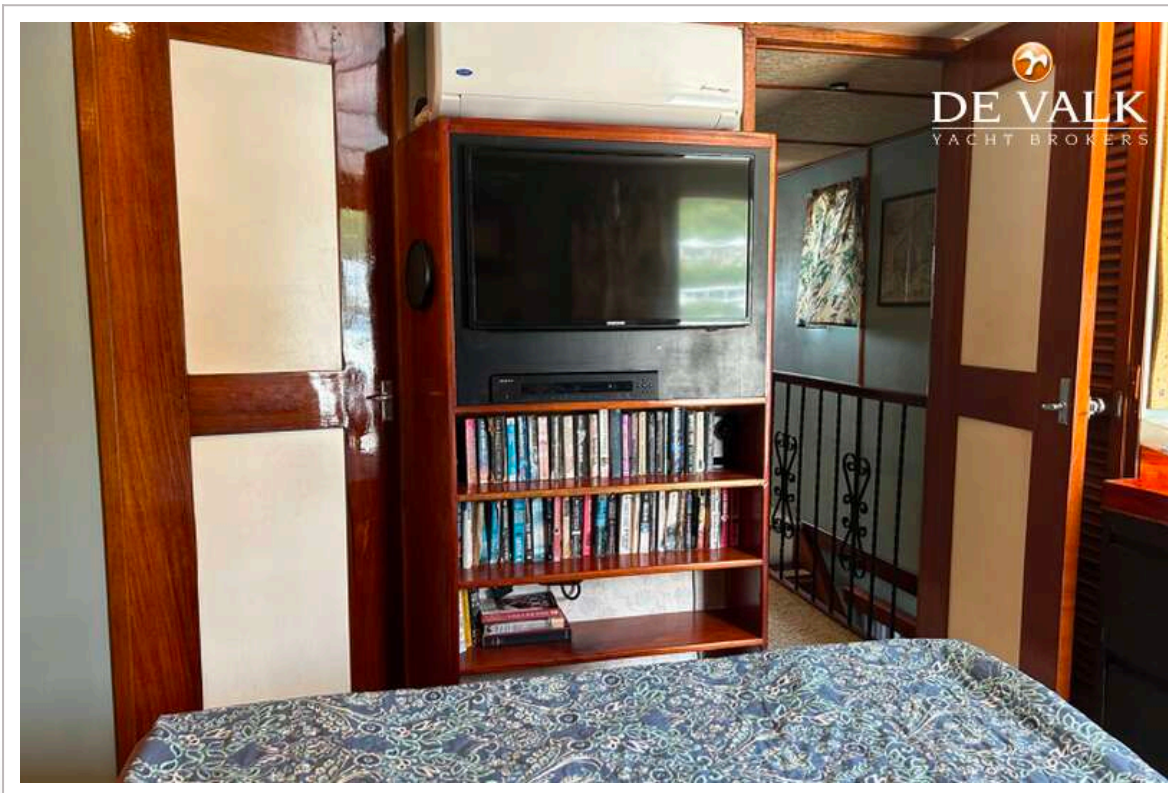
# MOTORJACHT GAIA



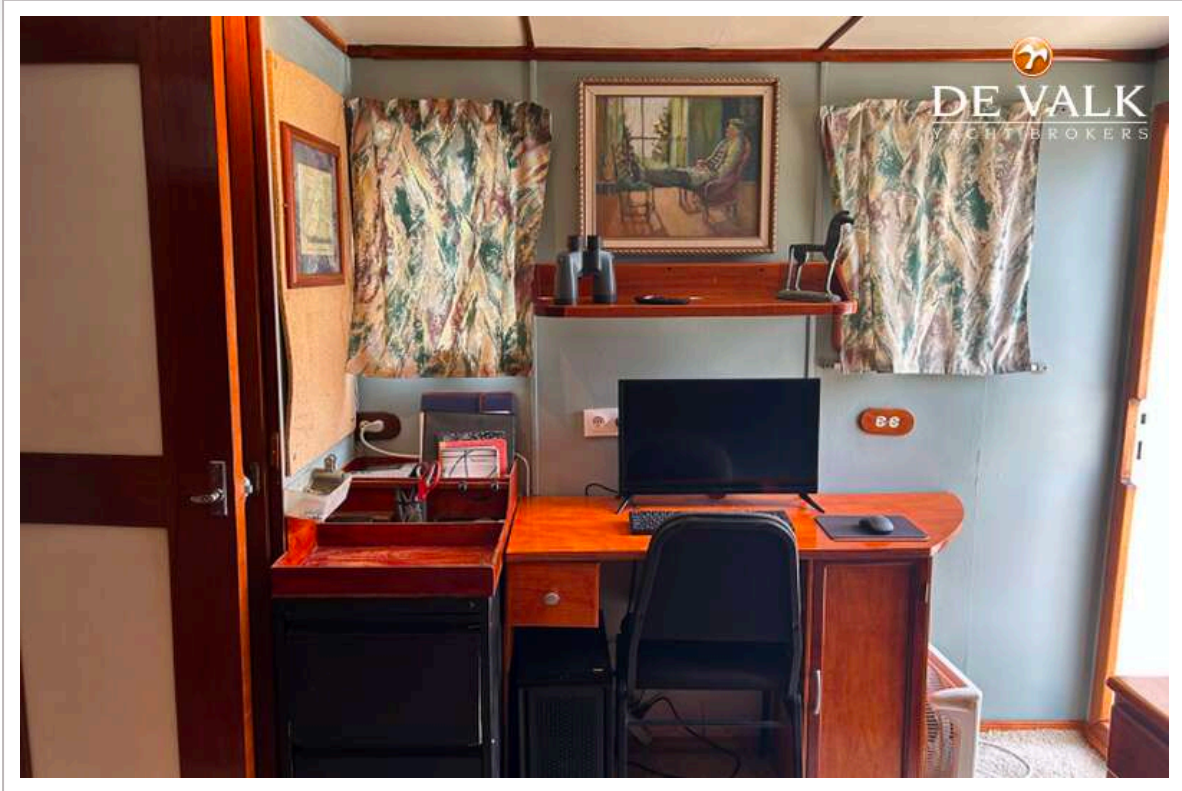
# MOTORJACHT GAIA



# MOTORJACHT GAIA



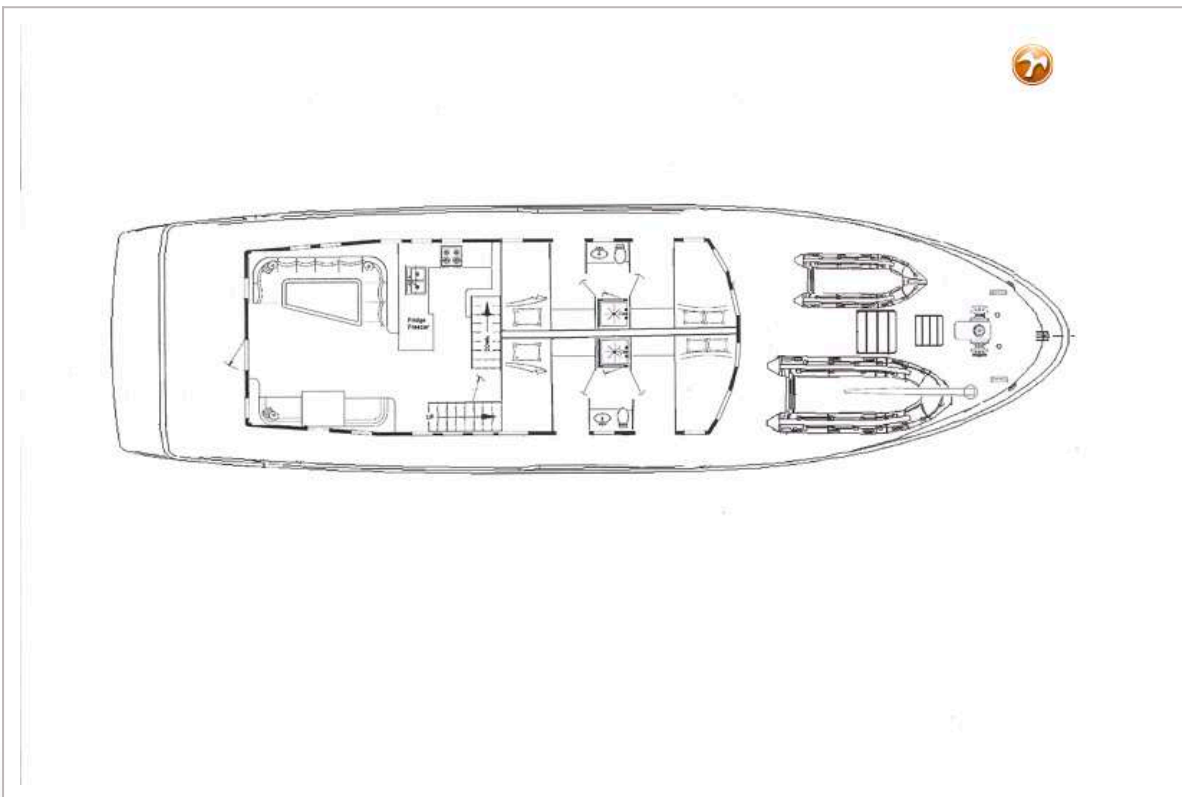
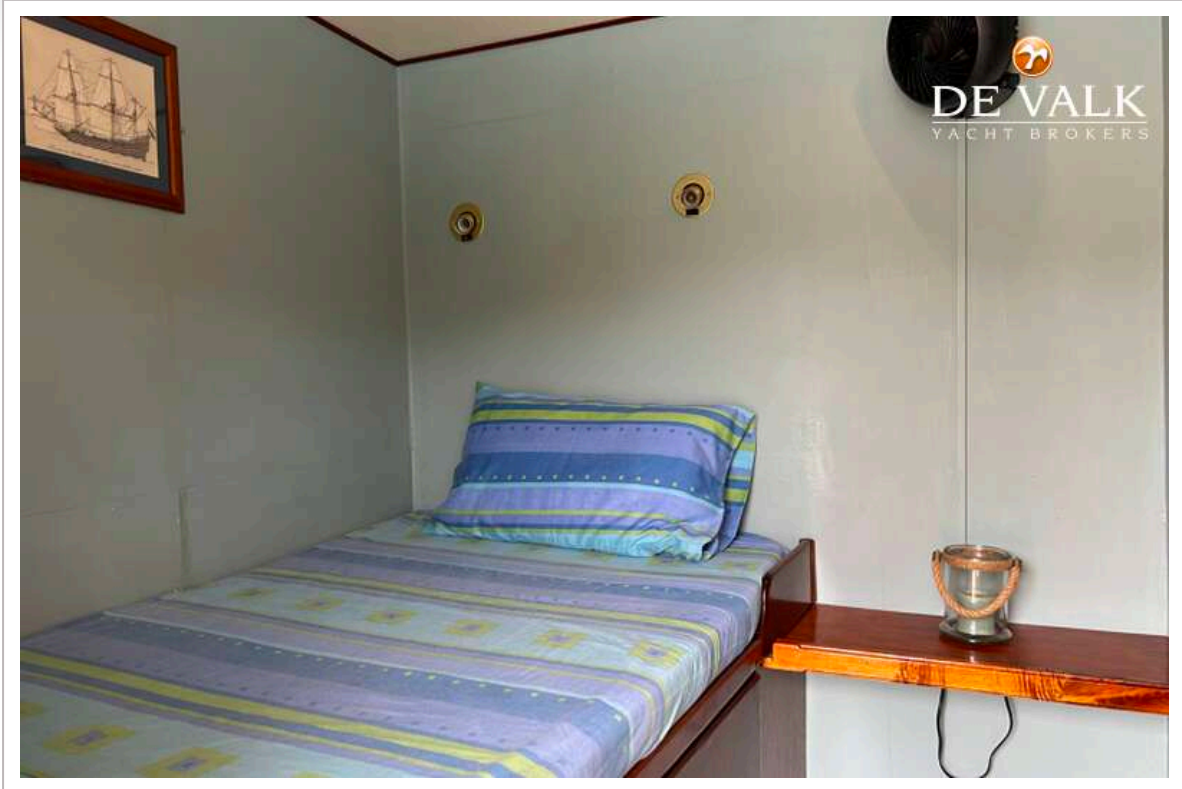
# MOTORJACHT GAIA



# MOTORJACHT GAIA



# MOTORJACHT GAIA





# MOTORJACHT GAIA

