



DE VALK  
YACHT BROKERS



OEHLMANN ALU ONE OFF 17.50



DE VALK  
YACHT BROKERS

BROKERAGE | CHARTER | BERTHS | FINANCE | INSURANCE | YACHT MANAGEMENT

## BROKER'S COMMENTS

Alizee is a true live-a-board bluewater cruiser and was designed to be easily sailed by two people and used for world cruising. The yacht and all systems have been thoroughly and regularly maintained. She is equipped with a.o.: generator, watermaker, furling mainsail and headsails etc. She is made for two persons living aboard in comfort and to take occasional guests. She is currently berthed in Hamburg.

*Jürgen Jacobs*

## SPECIFICATIONS

<b>Dimensions</b>	17.50 x 4.58 x 2.10 (m)	<b>Builder</b>	
<b>Built</b>	1999	<b>Cabins</b>	3
<b>Material</b>	Aluminium	<b>Berths</b>	6
<b>Engine(s)</b>	1 x Volvo Penta D4 diesel	<b>Hp/Kw</b>	180.00 (hp), 132.48 (kw)
<b>Asking price</b>	€ 345.000 (VAT Paid)	<b>Lying</b>	contact Hamburg

## CONTACT

<b>Sales office</b>	De Valk Hamburg	<b>Telephone</b>	+49 40 46 000 999
<b>Address</b>	Domstraße 11 20095 Hamburg DE	<b>E-mail</b>	hamburg@devalk.nl

## DISCLAIMER

These particulars are given in good faith as supplied but cannot be guaranteed.



## GENERAL

Model	OEHLMANN ALU ONE OFF 17.50
Type	sailing yacht
LOA (m)	17,50
LWL (m)	17,00
Beam (m)	4,58
Draft (m)	2,10
Air draft min (m)	21,50
Headroom (m)	2,05
Year built	1999
Country	Germany
Designer	Prof. Dr. Oelmann
Displacement (t)	24
CE norm	NA
Hull material	aluminium
Hull colour	blue
Hull shape	round-bilged
Keel type	fin keel with bulb
Superstructure material	aluminium
Rubbing strake	aluminum
Deck material	aluminium
Deck finish	teak
Superstructure deck finish	teak
Cockpit deck finish	teak
Antifouling (year)	2021
Dorades	yes
Window frame	aluminium
Window material	tempered glass
Deckhatch	5x
Insulation	foam
Radar arch	non collapsible



Fuel tank (litre)	aluminium 1500 ltr.
Level indicator (fuel tank)	yes
Freshwater tank (litre)	1500 ltr.
Level indicator (freshwater)	yes
Blackwater tank (litre)	aluminium 400 ltr.
Blackwater tank extraction	deck extraction + pump
Greywater tank (litre)	aluminium 400 ltr.
Wheel steering	hydraulic
Inside helm position	yes
Outside helm position	2 steering wheels
Emergency tiller	yes
More info on hull	Painted 2019

## ACCOMMODATION

Cabins	3
Berths	6
Interior	cherry
Floor	teak   new 2022
Pilot house/deck saloon	yes
Saloon	yes
Headroom saloon (m)	2,05 mtr.
Heating	central hot water
Navigation center	yes
Chart table	yes
Aft Cabin	Owners cabin
Convertible berth	yes
Opening door to cockpit	Yes
Galley	yes
Countertop	plastic
Sink	stainless steel   double
Cooker	diesel   Wallas



Oven	In cooker
Fridge	80 ltr.
Hot water system	220V or central heating   Boiler 80 ltr.
Water pressure system	electrical
Owners cabin	French bed   Aft cabin
Bed length (m)	2,00 x 2,00 mtr.
Wardrobe	hanging/drawers/shelves
Bathroom	en suite
Toilet	Yes
Toilet system	electric
Wash basin	Yes
Shower	Yes
Guest cabin 1	bunk bed
Bed length (m)	2,00 mtr.
Wardrobe	drawers and shelves
Guest cabin 2	bunk bed
Bed length (m)	2,00 mtr.
Wardrobe	drawers and shelves
Bathroom	shared
Toilet	Yes
Toilet system	manual
Wash basin	Yes
Shower	Yes

## MACHINERY

No of engines	1
Make	Volvo Penta
Type	D4
HP	180
kW	132.48
Fuel	diesel



<b>Year installed</b>	2011
<b>Maximum speed (kn)</b>	9,5
<b>Cruising speed (kn)</b>	8
<b>Engine hours</b>	Approx. 460
<b>Engine cooling system</b>	freshwater heat exchanger
<b>Drive</b>	shaft
<b>Engine controls</b>	electrical
<b>Gearbox</b>	hydraulic
<b>Bowthruster</b>	hydraulic
<b>Exhaust</b>	watercooled
<b>Propeller shaft material</b>	stainless steel
<b>Manual bilge pump</b>	yes
<b>Electric bilge pump</b>	New 2022
<b>Bilge alarm</b>	yes
<b>Electrical installation</b>	12 / 220 Volt
<b>Generator</b>	3.5 kw
<b>Running hours generator</b>	300
<b>Start battery</b>	1x 105Ah   new 2022
<b>Service battery</b>	8x Lithium 200 Ah   new 2022
<b>Generator battery</b>	1x 90Ah   new 2022
<b>Battery charger</b>	Waecco MCA 1280 new 2021   Victron Multi Plus 12/3000 new 2022
<b>Wind generator</b>	Superwind SCR 12 marine   new 2022
<b>Solar panel</b>	New 2022
<b>Shorepower</b>	with cable
<b>Insulation transformer</b>	Victron energy 3600 Auto   new 2022
<b>Watermaker</b>	Schenker 100 l/h   new 2022

## NAVIGATION

<b>Compass</b>	yes
<b>Electric compass</b>	Simrad



Multi control display	Simrad
Depth sounder/log	Simrad
Repeater	yes
VHF	yes
Autopilot	Simrad AP28
Radar/GPS/plotter	Simrad
Personal computer	yes
PC connection	yes
Wifi antenna	New 2022
Electronic chart(s)	yes
AIS transceiver	yes
Transmitter	yes
Navigation lights	yes

## EQUIPMENT

Fixed windscreen	yes
Cockpit cover	Yes
Sun awning	Over the boom
Cockpit cushions	Yes
Cockpit table	Yes
Bathing platform	yes
Boarding ladder	stainless steel
Transom door	yes
Bow ladder	yes
Anchor	Bruce 2x
Anchor chain	yes
Windlass	electrical
Dinghy	yes
Outboard	yes
Outboard support	yes
Davits	yes



Davits controls	manual
Sea railing	aluminum + wood
Railing side opening gates	yes
Safety lines on deck	yes
Wiper	yes
Horn	electric
Radar reflector	yes
Fenders	yes
Mooring lines	yes
Spare parts	yes
Tools	yes
TV	yes
Speakers in salon	yes
Fire extinguisher	yes
Latest extinguisher survey	2020

## RIGGING

Rigging	sloop-cutter
Standing rigging	wire   new 2019
Brand mast	Bamar
Material mast	aluminium coated
Spreaders	2 pair
Mainsail	yes
Stoway mast	yes
Jib	yes
Jib I	yes
Genoa	yes
Genoa furler	Bamar Electric Jib
Cutter furler	Seldén Furler 300S
Self tacking jib installation	yes
Reefing System	main in-mast furling





Backstay adjuster	hydraulic
Boomvang	gasspring
Primary sheet winch	2x Barbarossa 56.2
Secondary sheet winch	1x Line Driver Winch
Genoa sheetwinches	2x Barbarossa 66.2   Electric
Halyard winches	3x Antal and 1x Harken 16 on mast
Multifunctional winches	1x Lewmar 40
Spi-pole	carbon



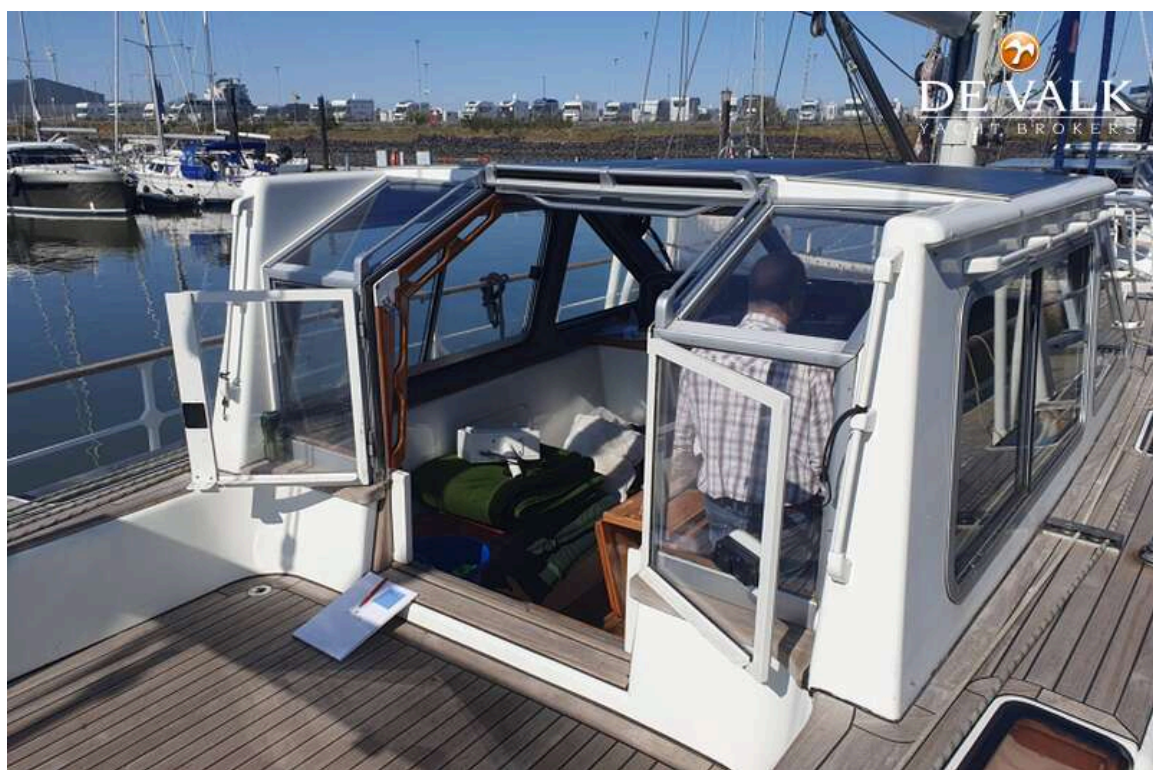








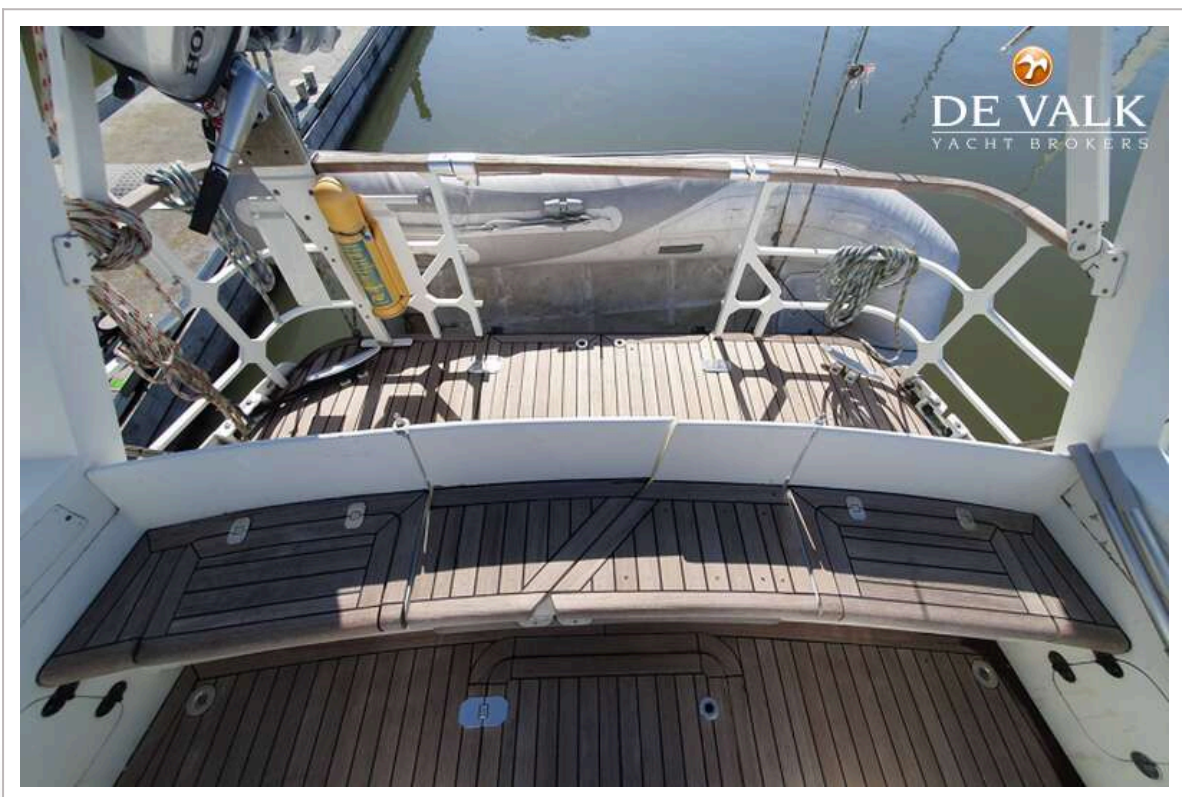


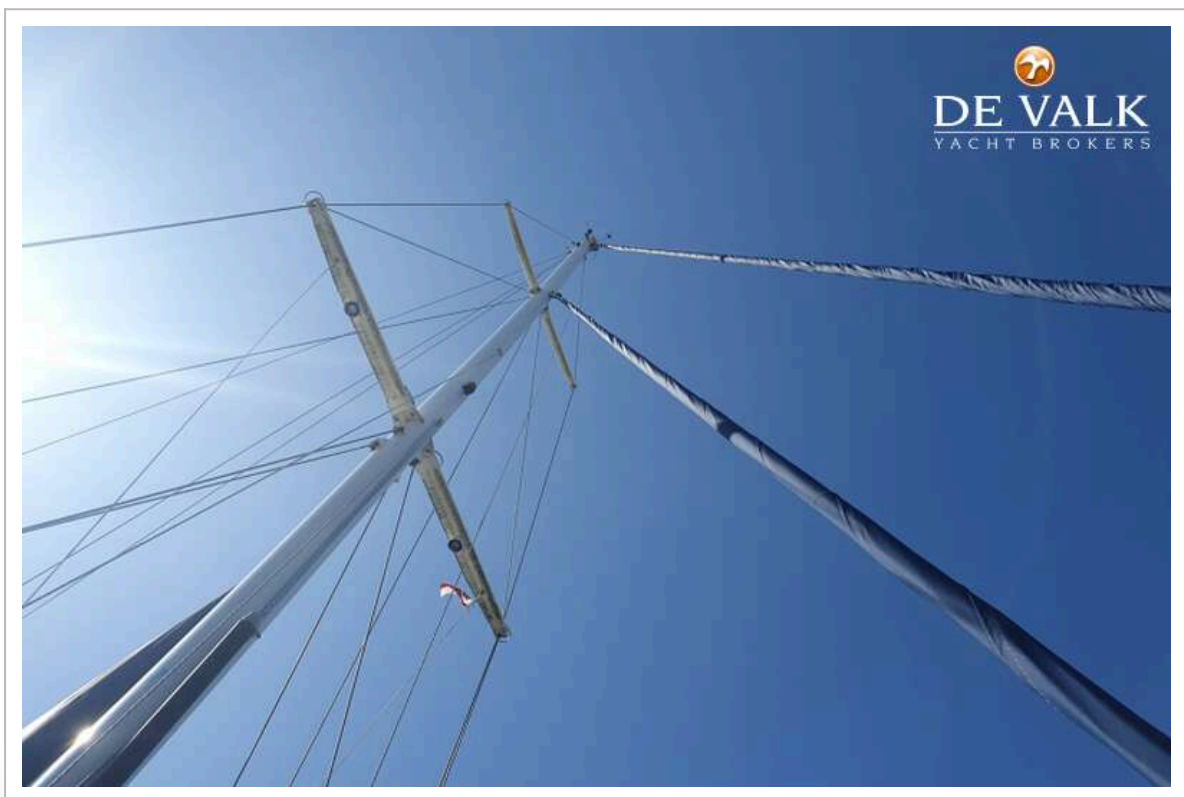
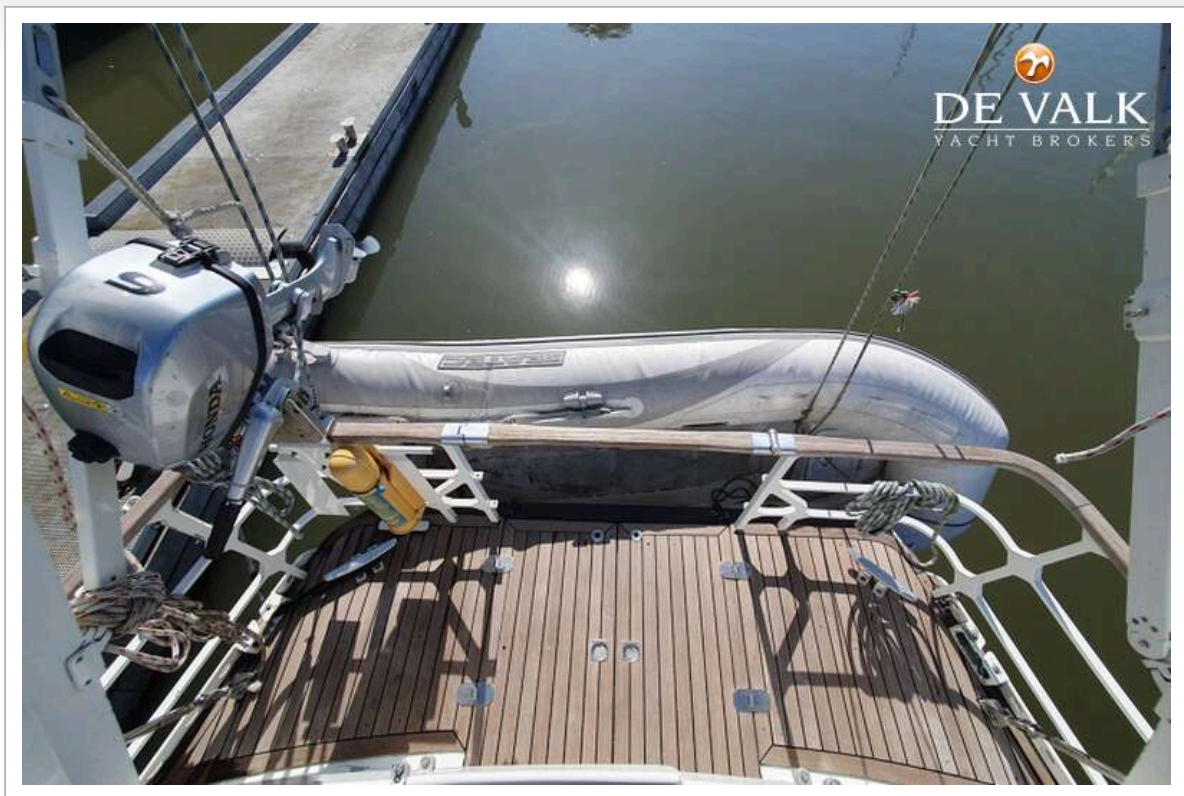




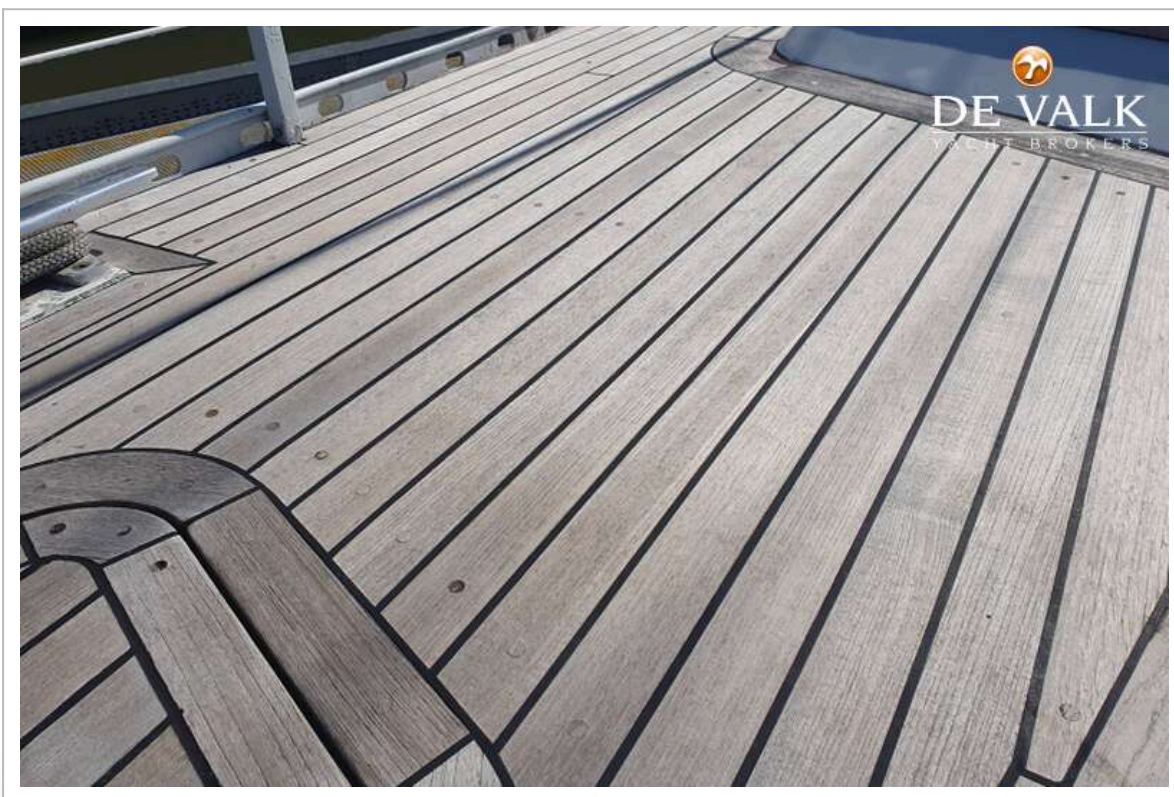




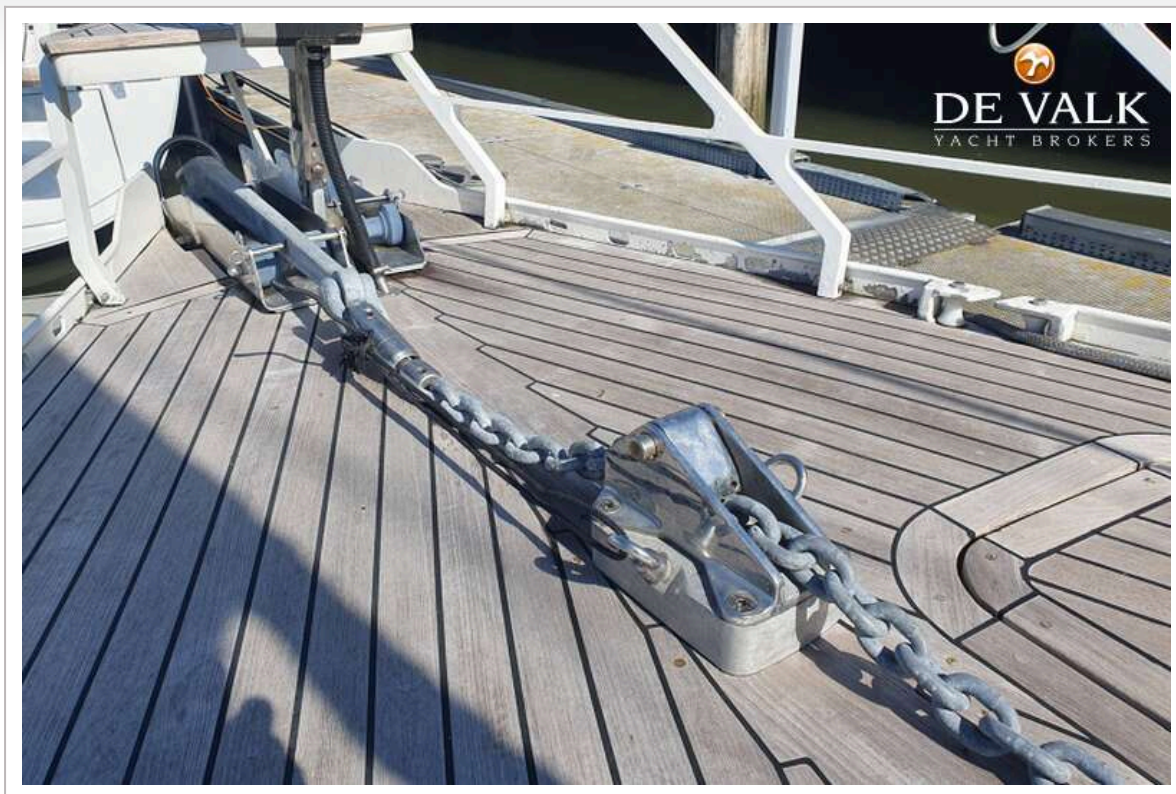




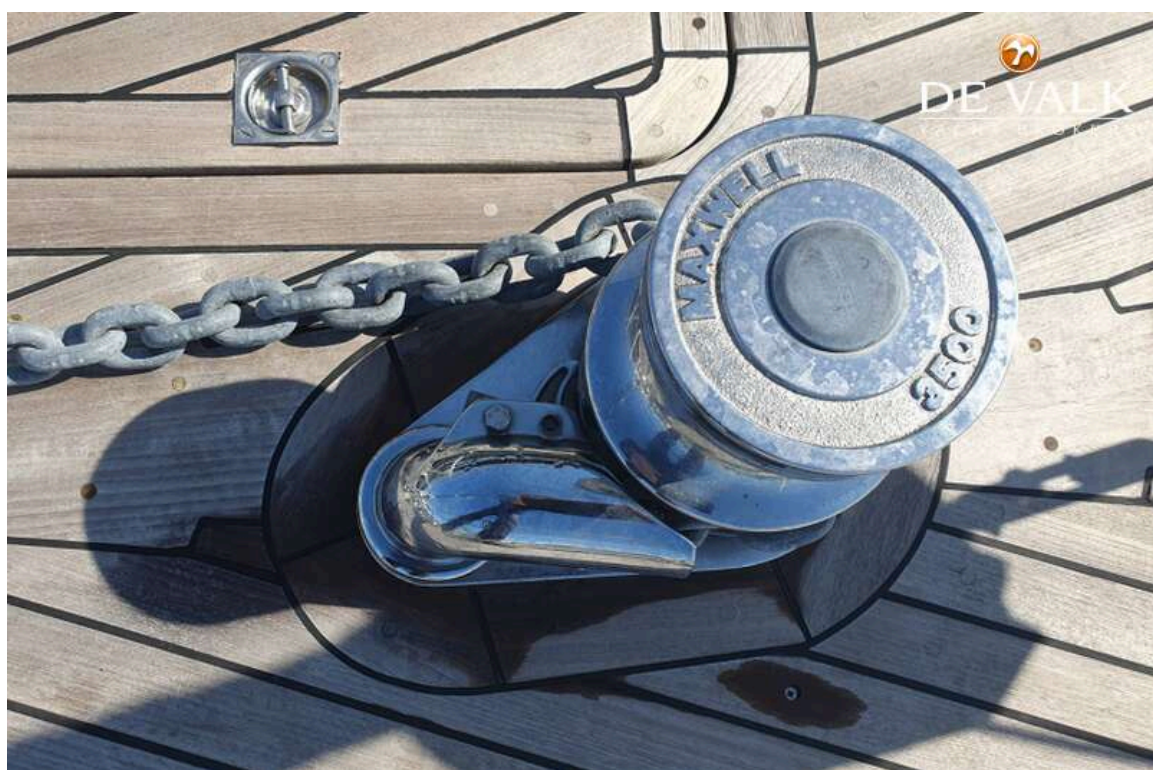


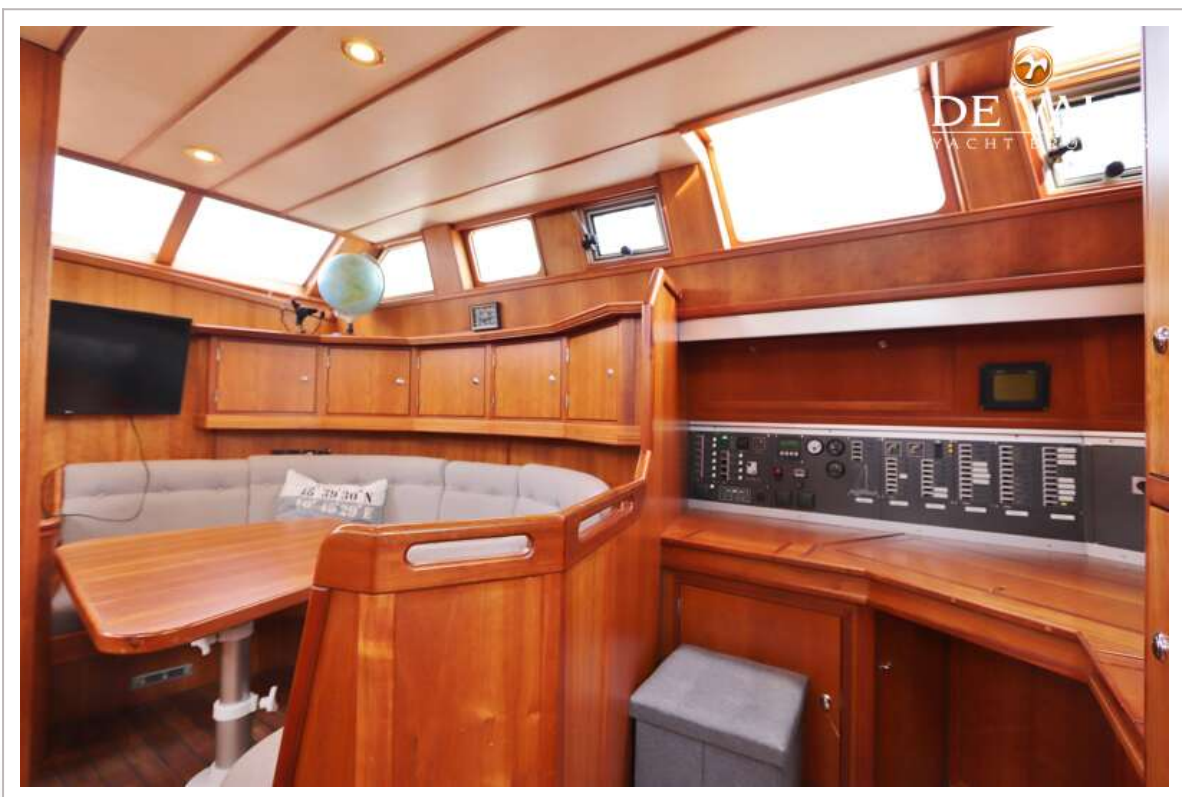




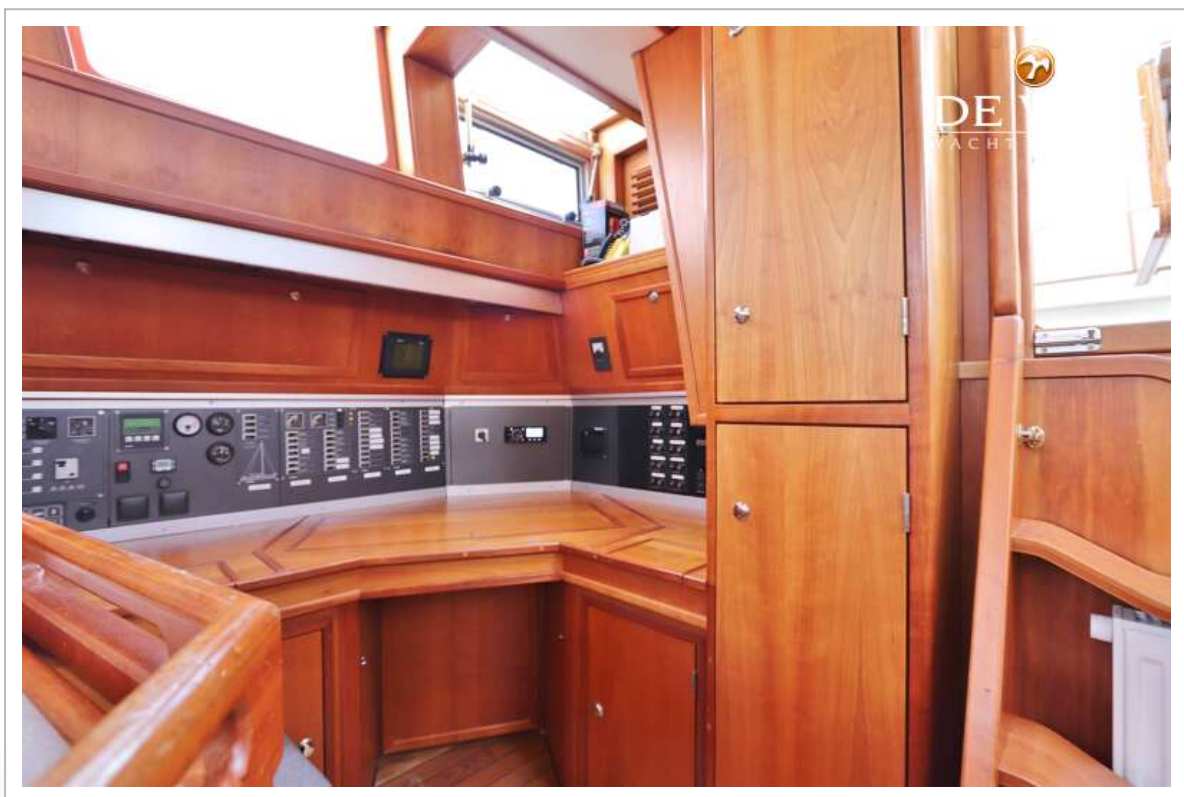








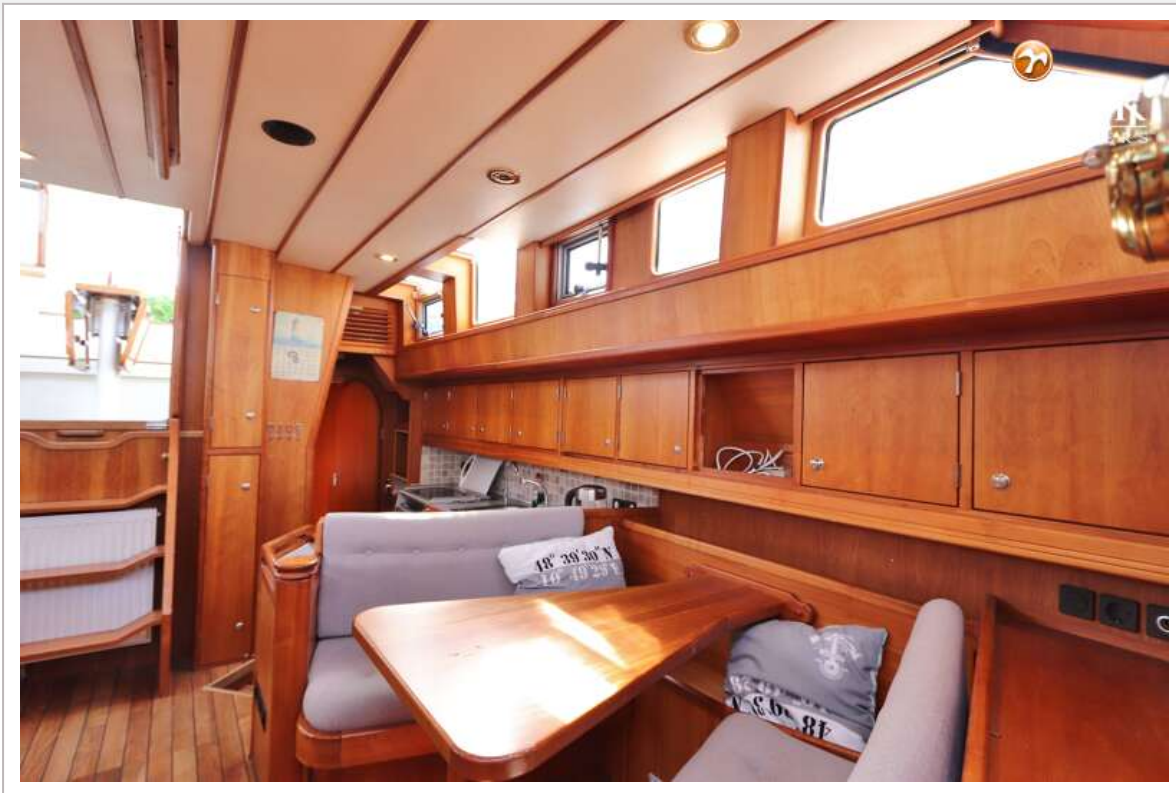




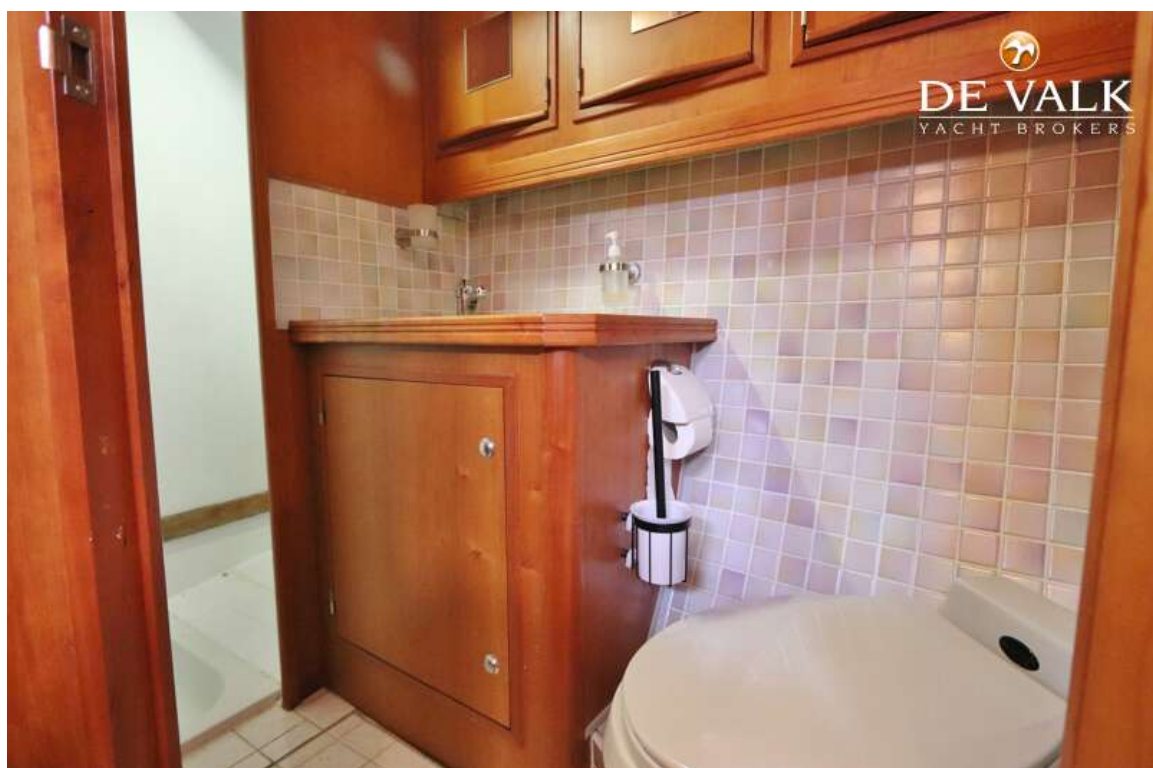


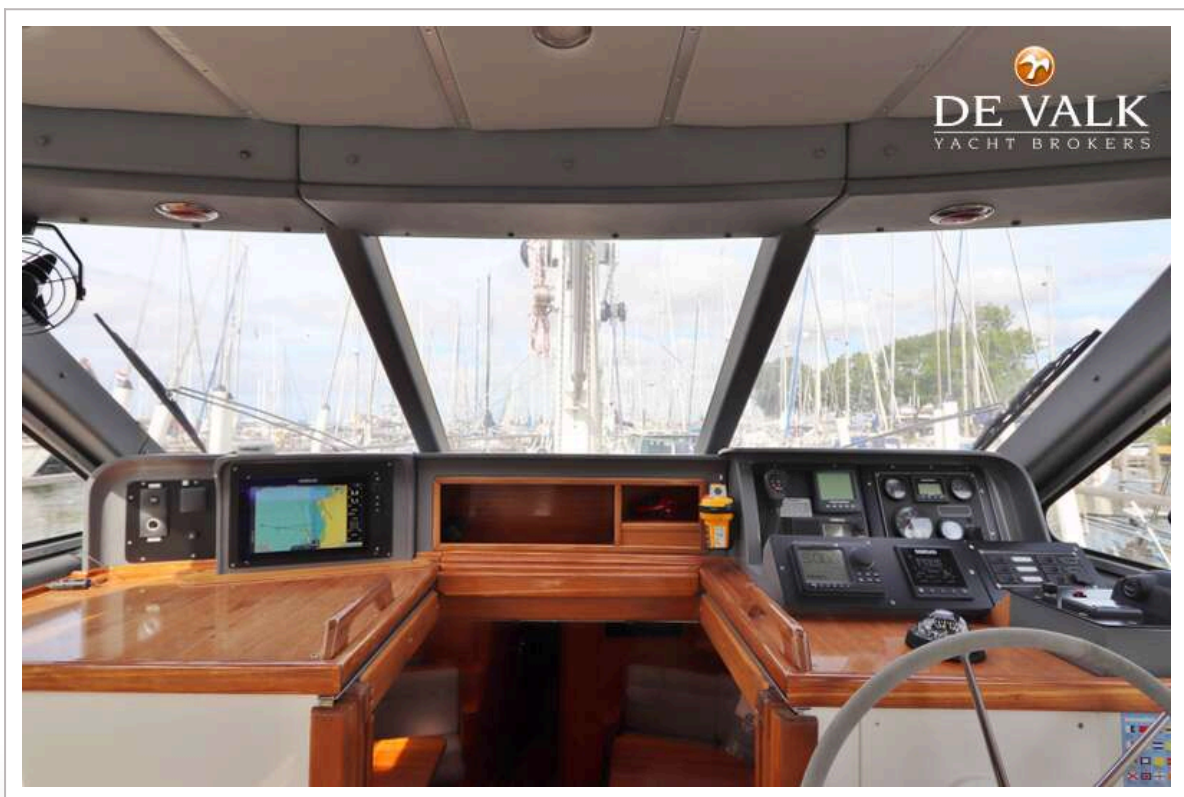














# OEHLMANN ALU ONE OFF 17.50



