



DE VALK  
YACHT BROKERS



## HALLBERG RASSY 37



DE VALK  
YACHT BROKERS

# HALLBERG RASSY 37

## BROKER'S COMMENTS

Designed by Germán Frers, the newer Hallberg Rassy 37 was the logical next step replacing the successful 36: more spacious, modern and with improved sailing characteristics. You can expect top quality in construction and finishing from Hallberg-Rassy. This 37-footer has been equipped with many recent upgrades, including extra sails, modern electronics and extra equipment. With three electric winches, operation is effortless. We sold her at the end of last year and is available again due to unexpected circumstances. Always well maintained, stored indoors during the winter and surveyed.

*Marc Weijenberg*

## SPECIFICATIONS

<b>Dimensions</b>	11.32 x 3.55 x 1.90 (m)	<b>Builder</b>	Hallberg Rassy Varv AB
<b>Built</b>	2005	<b>Cabins</b>	2
<b>Material</b>	GRP	<b>Berths</b>	7
<b>Engine(s)</b>	1 x Yanmar 4JH4E diesel	<b>Hp/Kw</b>	54.00 (hp), 39.74 (kw)
<b>Asking price</b>	Under Offer (VAT )	<b>Lying</b>	The Netherlands

## CONTACT

<b>Sales office</b>	De Valk Thuishaven	<b>Telephone</b>	+31 35 5829042
<b>Address</b>	Marinaweg 8 1361 AC Almere NL	<b>E-mail</b>	thuishaven@devalk.nl

## DISCLAIMER

These particulars are given in good faith as supplied but cannot be guaranteed.



## GENERAL

<b>Model</b>	HALLBERG RASSY 37
<b>Type</b>	sailing yacht
<b>LOA (m)</b>	11,32
<b>LWL (m)</b>	10,20
<b>Beam (m)</b>	3,55
<b>Draft (m)</b>	1,90
<b>Air draft (m)</b>	17,20
<b>Headroom (m)</b>	1,92
<b>Year built</b>	2005
<b>Launched</b>	2006
<b>Builder</b>	Hallberg Rassy Varv AB
<b>Country</b>	Sweden
<b>Designer</b>	German Frers
<b>Displacement (t)</b>	7,5
<b>Ballast (tonnes)</b>	lead 3,2
<b>CE norm</b>	A
<b>Hull material</b>	GRP
<b>Hull colour</b>	white
<b>Hull shape</b>	round-bilged
<b>Keel type</b>	bulb keel
<b>Superstructure material</b>	GRP
<b>Rubbing strake</b>	yes
<b>Deck material</b>	GRP
<b>Deck finish</b>	teak
<b>Superstructure deck finish</b>	non-skid moulded in
<b>Cockpit deck finish</b>	teak
<b>Dorades</b>	yes
<b>Window frame</b>	aluminium
<b>Window material</b>	polycarbonate
<b>Deckhatch</b>	4 x



# HALLBERG RASSY 37

<b>Portholes</b>	aluminium
<b>Fuel tank (litre)</b>	stainless steel 225 + 115
<b>Freshwater tank (litre)</b>	stainless steel 245 + 155
<b>Blackwater tank (litre)</b>	stainless steel
<b>Blackwater tank extraction</b>	deck extraction + uw line
<b>Wheel steering</b>	cable steering Lewmar Constellation
<b>Emergency tiller</b>	yes
<b>More info on hull</b>	uw body sanded, 2 x epoxy coating (2019) plus antifouling
<b>More info on paintwork</b>	new painted blue striping on hull and superstructure 2024, seacocks renewed in 2016.

## ACCOMMODATION

<b>Cabins</b>	2
<b>Berths</b>	7
<b>Interior</b>	mahogany
<b>Floor</b>	teak and holly Carpets
<b>Saloon</b>	with L-shape settee and fold up backrests
<b>Headroom saloon (m)</b>	1,92
<b>Heating</b>	diesel ducted hot air Webasto Airtop 3500D
<b>Chart table</b>	yes
<b>Aft Cabin</b>	yes
<b>Convertible berth</b>	2 x in saloon
<b>Galley</b>	yes
<b>Countertop</b>	yes
<b>Sink</b>	stainless steel 2 x
<b>Cooker</b>	calor gas Eno (2017)
<b>Oven</b>	Eno (2017)
<b>Fridge</b>	Isotherm (2017)
<b>Hot water system</b>	220V + engine 40 ltrs
<b>Water pressure system</b>	electrical
<b>Manual and/or foot pump</b>	yes



# HALLBERG RASSY 37

<b>Owners cabin</b>	double bed + single bed
<b>Bed length (m)</b>	2,00 x 1,40 mtr + 2,00 x 0,75 mtr
<b>Wardrobe</b>	hanging and shelves
<b>Bathroom</b>	shared 1
<b>Toilet</b>	shared
<b>Toilet system</b>	manual
<b>Wash basin</b>	in the bathroom
<b>Shower</b>	shared
<b>Guest cabin 1</b>	v-bed
<b>Bed length (m)</b>	2 x 2,12 x 0,62 mtr
<b>Wardrobe</b>	hanging/drawers/shelves
<b>Extra info</b>	new upholstery (2018) and led interior lighting

## MACHINERY

<b>No of engines</b>	1
<b>Make</b>	Yanmar
<b>Type</b>	4JH4E
<b>HP</b>	54
<b>kW</b>	39.74
<b>Fuel</b>	diesel
<b>Year installed</b>	2005
<b>Maximum speed (kn)</b>	8
<b>Cruising speed (kn)</b>	6,5
<b>Consumption (l/hr)</b>	3
<b>Engine hours</b>	1735
<b>Engine cooling system</b>	freshwater heat exchanger
<b>Drive</b>	shaft
<b>Shaft seal</b>	Volvo Penta
<b>Engine controls</b>	bowden cable
<b>Gearbox</b>	mechanical
<b>Bowthruster</b>	electric Lewmar 4,5kW (185tt) + footswitches (2024)



# HALLBERG RASSY 37

<b>Exhaust</b>	watercooled
<b>Propeller type</b>	feathering Gori
<b>Propeller blades</b>	3
<b>Propeller shaft material</b>	stainless steel
<b>Shaft lubrication</b>	water
<b>Manual bilge pump</b>	yes
<b>Electrical installation</b>	12v/220v
<b>Start battery</b>	2 x 95ah (2023)
<b>Service battery</b>	2 x 180ah (2019)
<b>Bowthruster battery</b>	2 x 125ah (2019)
<b>Battery monitor</b>	2 x Mastervolt (2024)
<b>Battery charger</b>	Mastervolt Ivo smart 12v/50amp
<b>Shorepower</b>	with cable
<b>Extra info</b>	rope cutter on prop-shaft

## NAVIGATION

<b>Compass</b>	Silva (2024)
<b>Electric compass</b>	via autopilot
<b>Depth sounder</b>	Raymarine ST60
<b>Log</b>	Raymarine ST60
<b>Windset</b>	Raymarine ST60 (mast unit (2023)
<b>VHF</b>	Raymarine Ray240E + cockpit horn
<b>Autopilot</b>	Raymarine ST6002
<b>Rudder angle indicator</b>	via autopilot
<b>Radar</b>	Raymarine (2018)
<b>GPS</b>	yes
<b>Plotter</b>	Raymarine ES127MFD + charttable repeater (2018)
<b>Navtex</b>	Furuno NX300
<b>Electronic chart(s)</b>	1 x (2024)
<b>AIS transponder</b>	Raymarine Class B
<b>EPIRB</b>	(updated 2023)



Navigation lights incl. 3-color masthead light

## EQUIPMENT

Fixed windscreen	yes
Sprayhood	(2017)
Cockpit cover	(2018)
Cockpit table	yes
Bathing platform	yes
Boarding ladder	stainless steel
Bow ladder	stainless steel
Deck shower	hot + cold fresh water
Anchor	Delta
Anchor chain	40 mtr
Other ground tackle	seadrogue
Windlass	electrical Lewmar (+remote control)
Capstan	Lewmar
Sea railing	wire
Grab rail (superstructure)	teak
Pushpit	including two pensiodo seats
Pulpit	yes
Life raft	valise (or bag) Seagoo (2016)
Life raft (pers)	4 pers
Last life raft survey	(2024)
Lifebuoy	2 x
Danbuoy	1 x
Safety lines on deck	yes
Radar reflector	yes
Fenders	yes
Mooring lines	yes
Radio	Fusion (2023)
Cockpit speakers	(2023)



Speakers in salon	(2023)
Clock - barometer	yes
Fire extinguisher	3 x

## RIGGING

Rigging	sloop
Standing rigging	wire 2005
Brand mast	Seldén
Material mast	aluminium
Spreaders	2 x set
Mainsail cover	yes
Battcars	including Lazy Jacks and Lazy Bag/Main drop system
Fully battened mainsail	Elvström Vectran/Technora (2017)
High aspect	Elvström with UV strip
Genoa furler	Furlex
Code Zero	Furling (2023)
Gennaker	with rocon (2023)
Stormjib	(2023)
Reefing System	quick-one-line-reefing
Backstay adjuster	Hasselfors
Boomvang	mechanical Seldén Rodkicker
Primary sheet winch	2 x electric Lewmar 48ST (2018)
Secondary sheet winch	2 x Lewmar 16ST (2018)
Halyard winches	1 x electric Andersen 34ST (2018) & 2 x manual Lewmar 16ST
Spi-pole	Seldén carbon
Gennaker pole	Stainless / rvs
Extra info	running rigging (2017/2024), aluminium turnbuckle covers



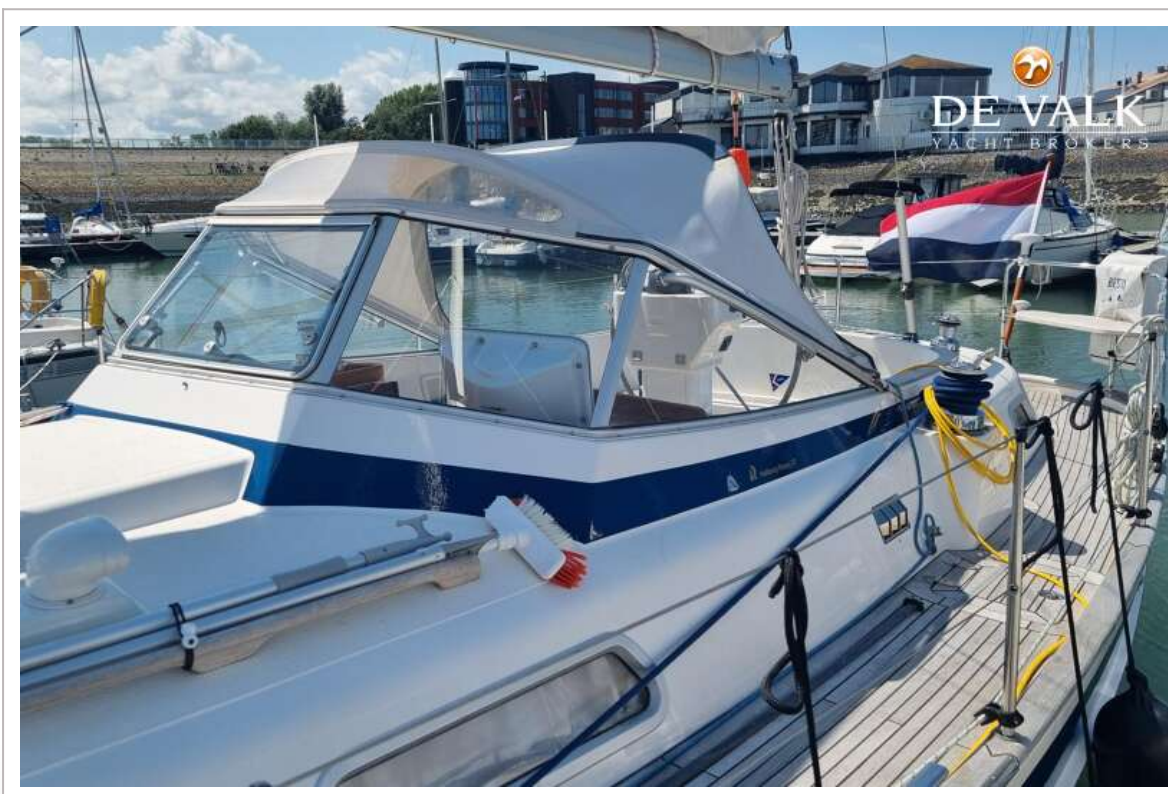
# HALLBERG RASSY 37



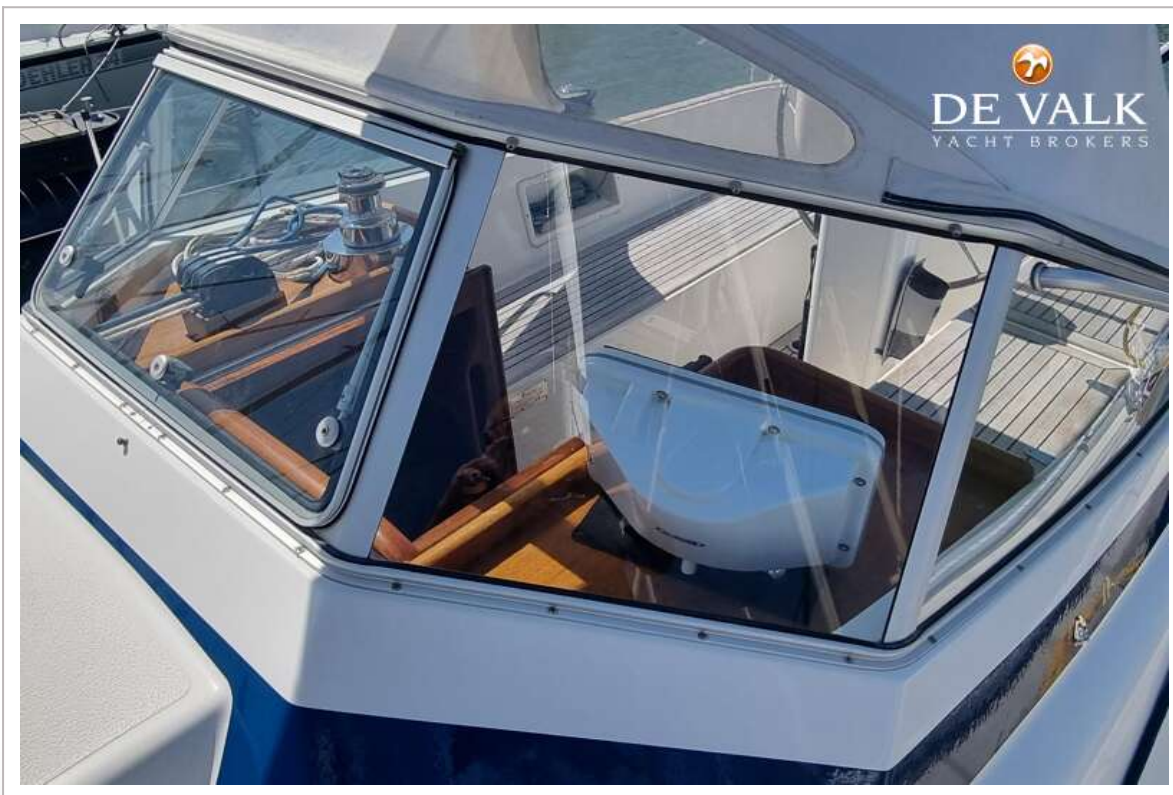
# HALLBERG RASSY 37



# HALLBERG RASSY 37



# HALLBERG RASSY 37



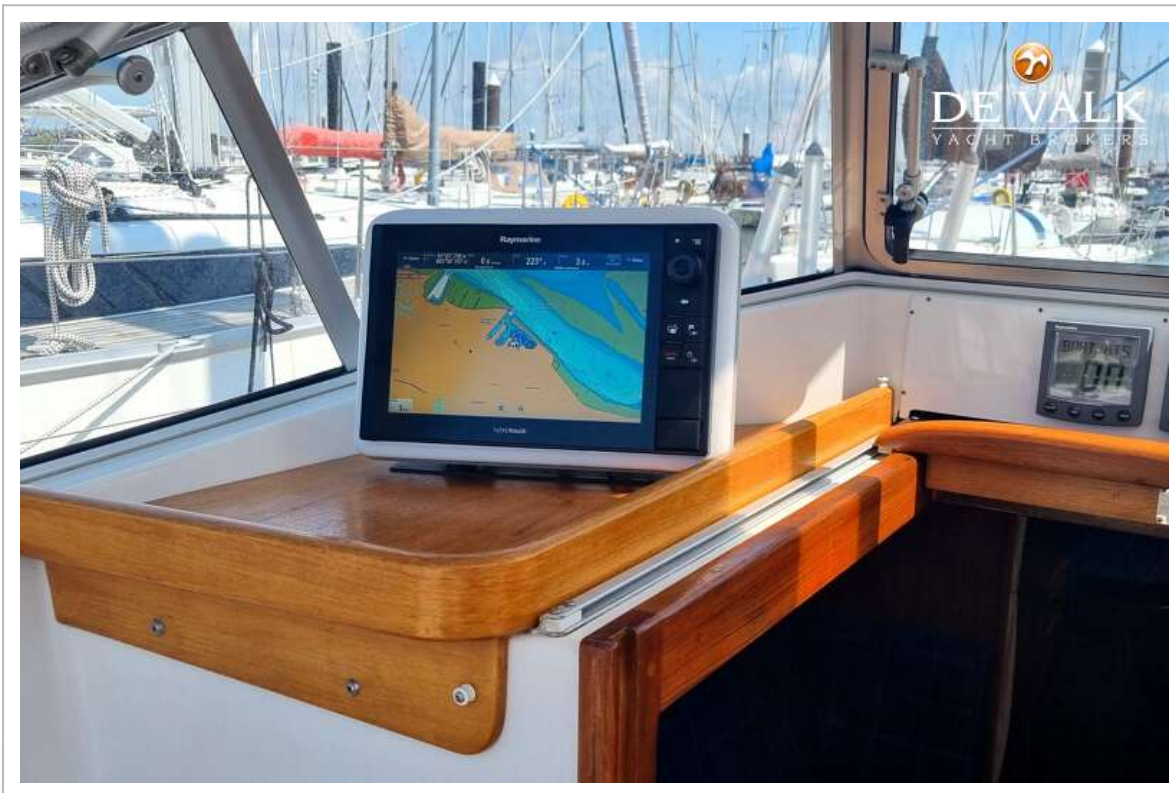
# HALLBERG RASSY 37



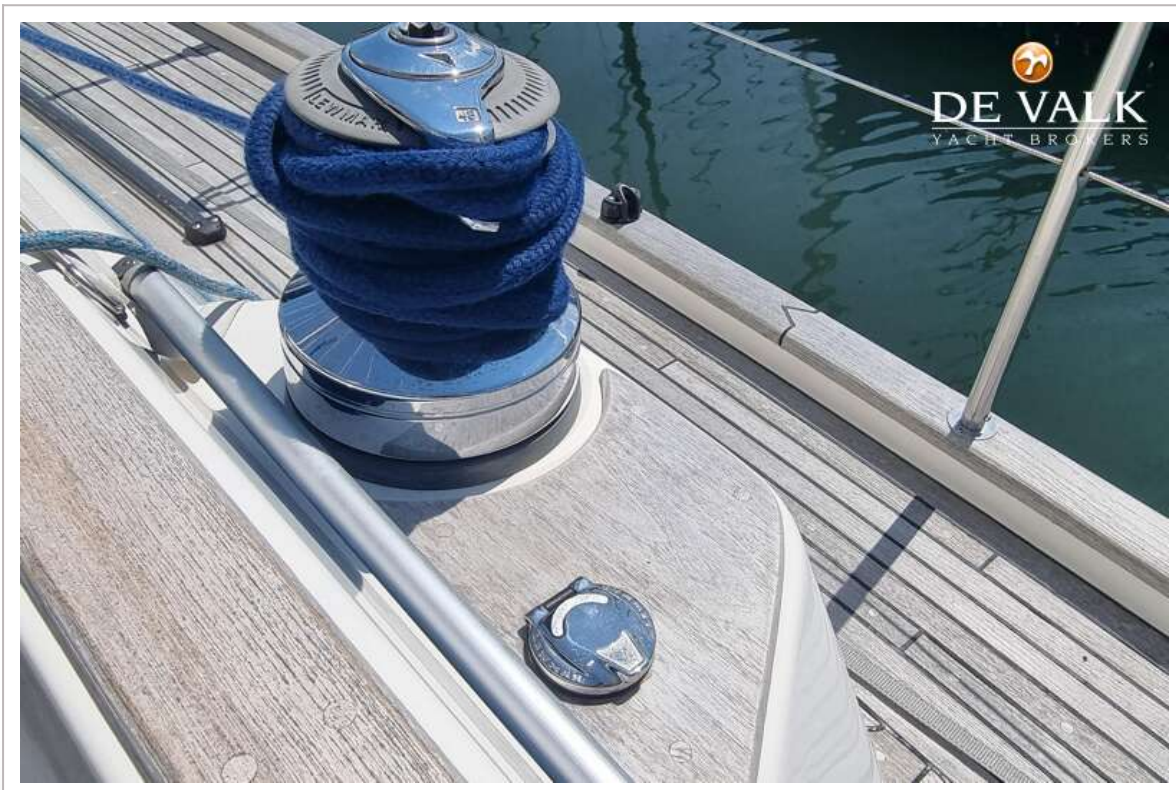
# HALLBERG RASSY 37



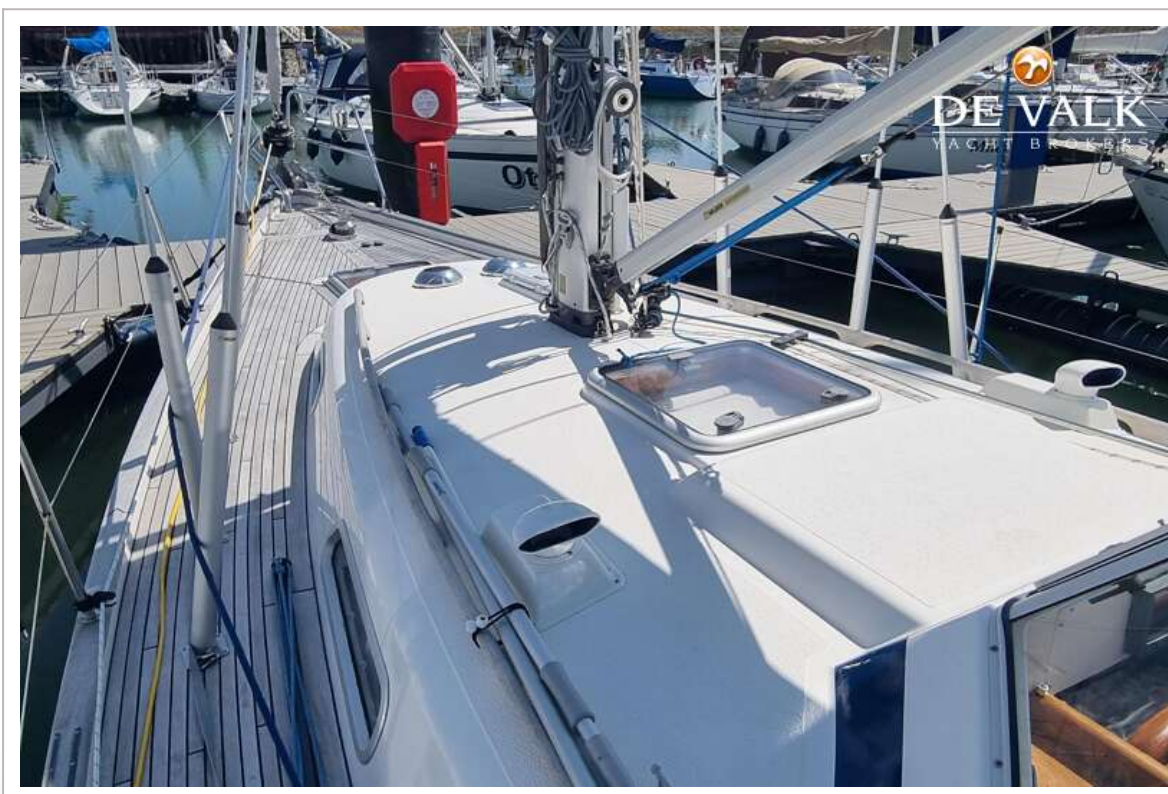
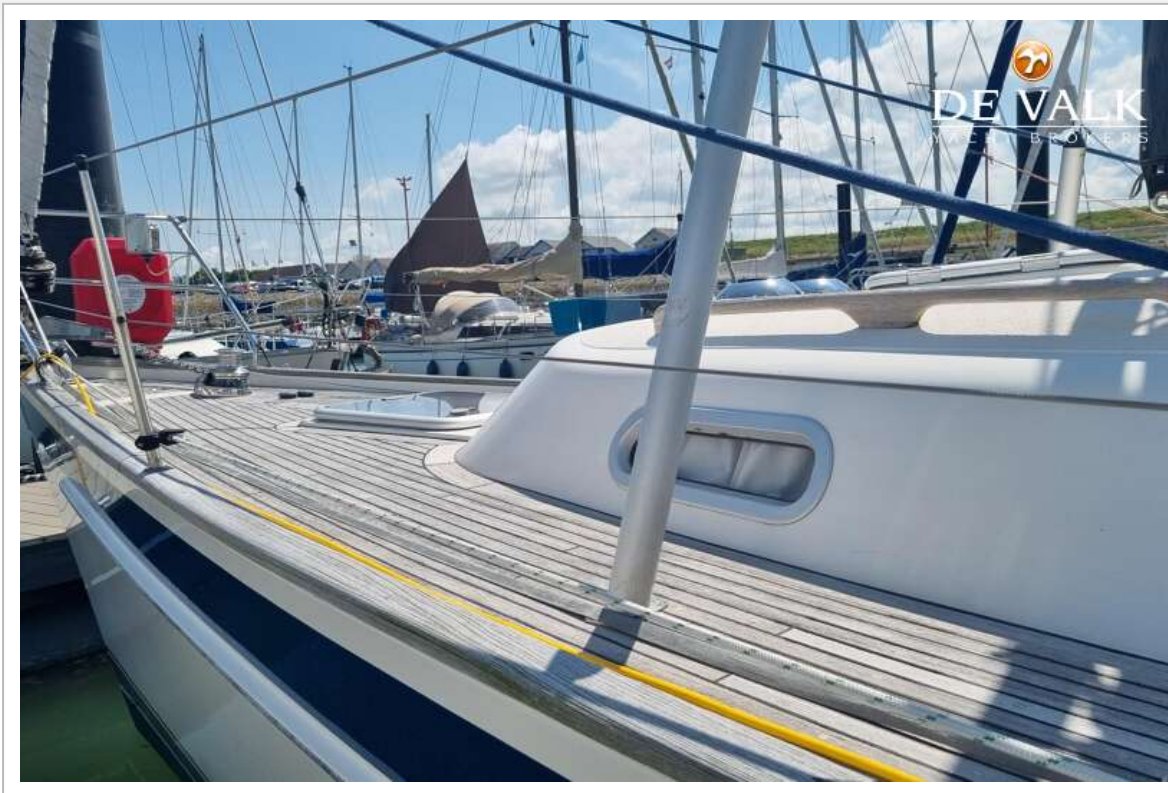
# HALLBERG RASSY 37



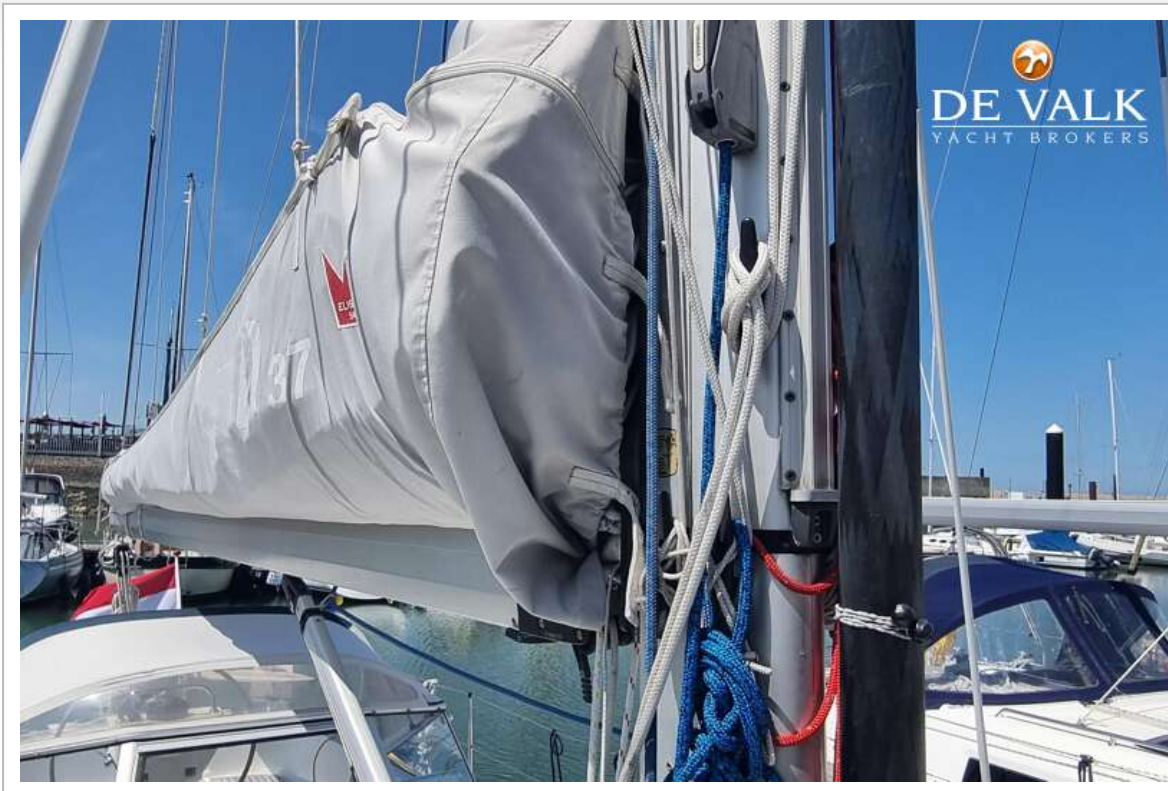
# HALLBERG RASSY 37



# HALLBERG RASSY 37



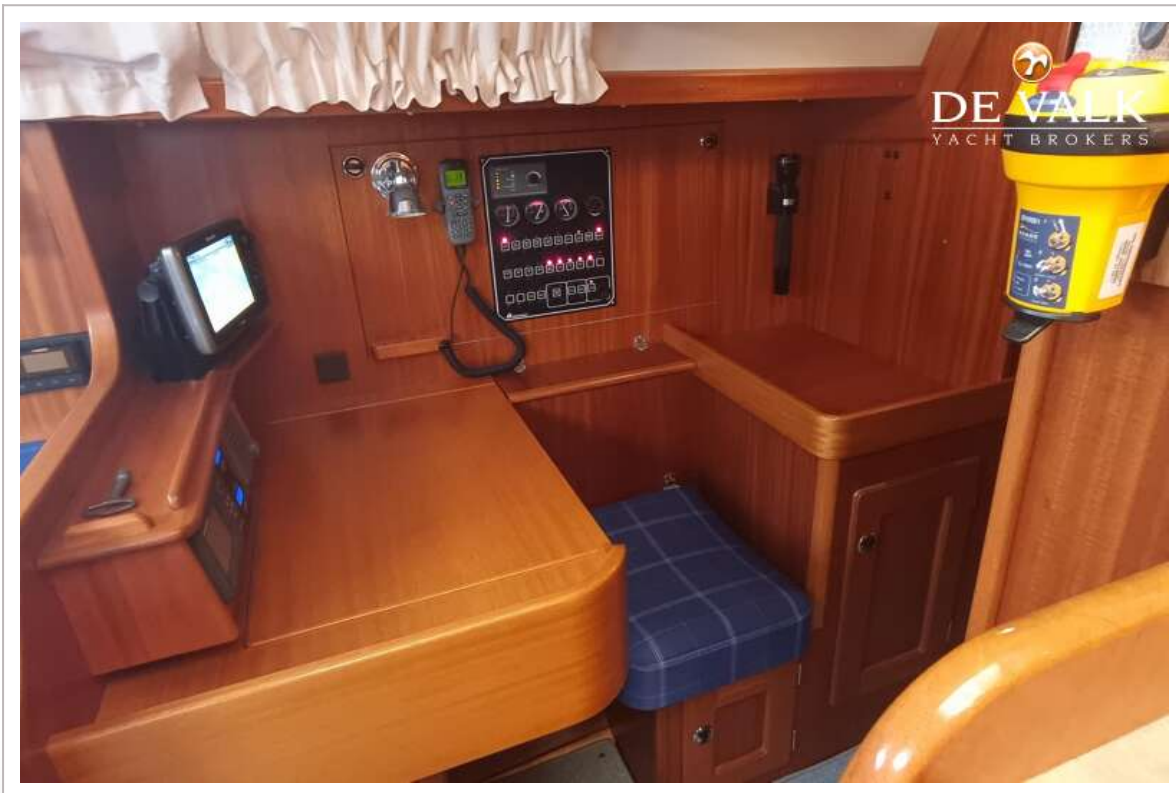
# HALLBERG RASSY 37



# HALLBERG RASSY 37



# HALLBERG RASSY 37



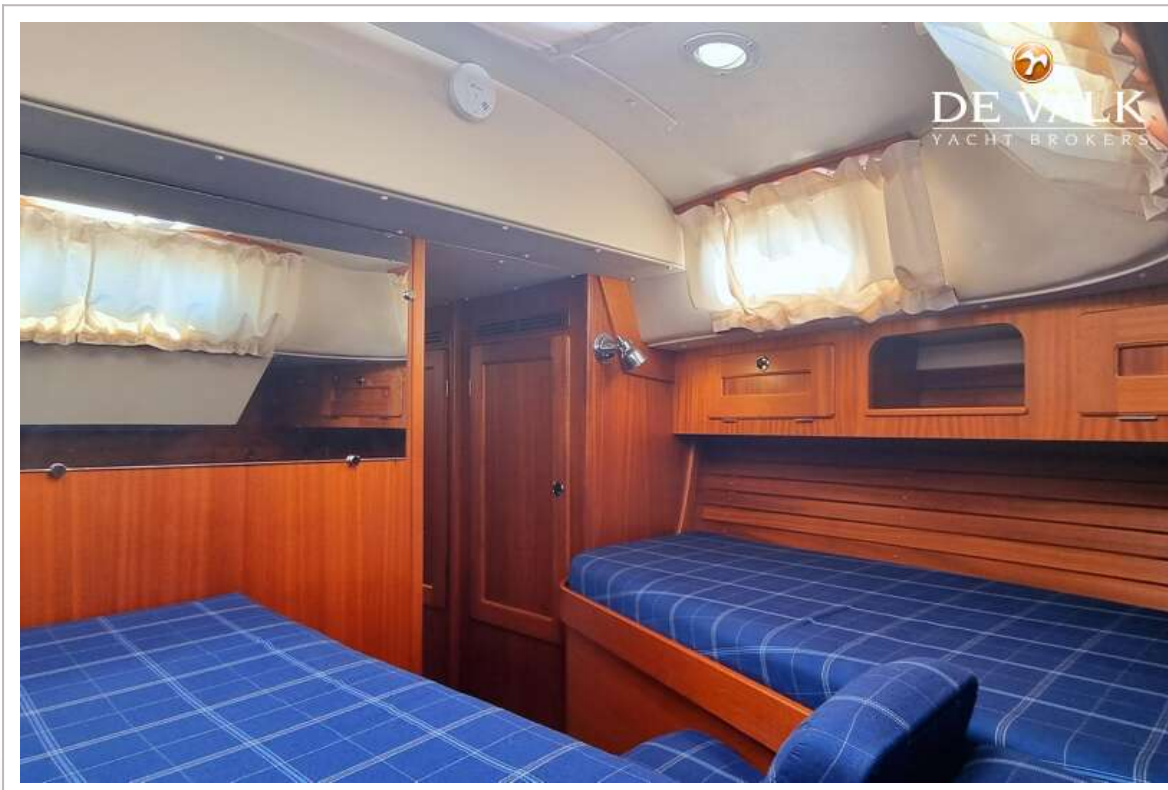
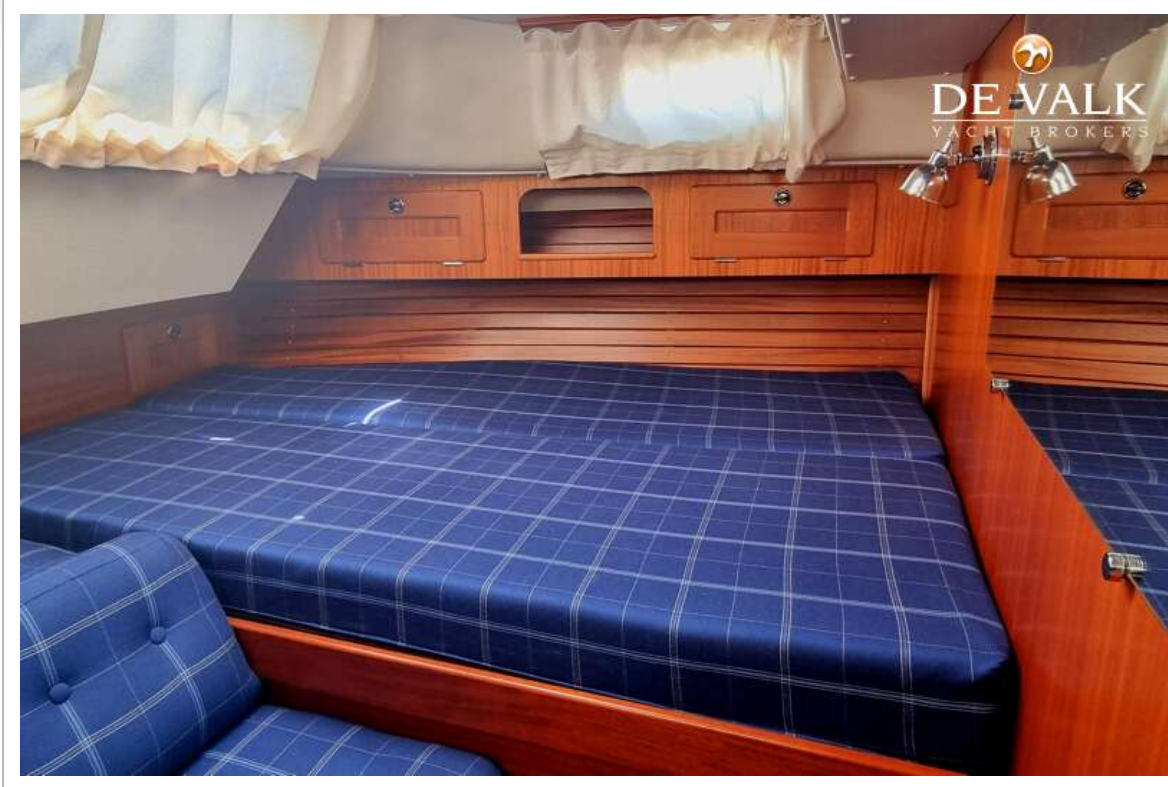
# HALLBERG RASSY 37



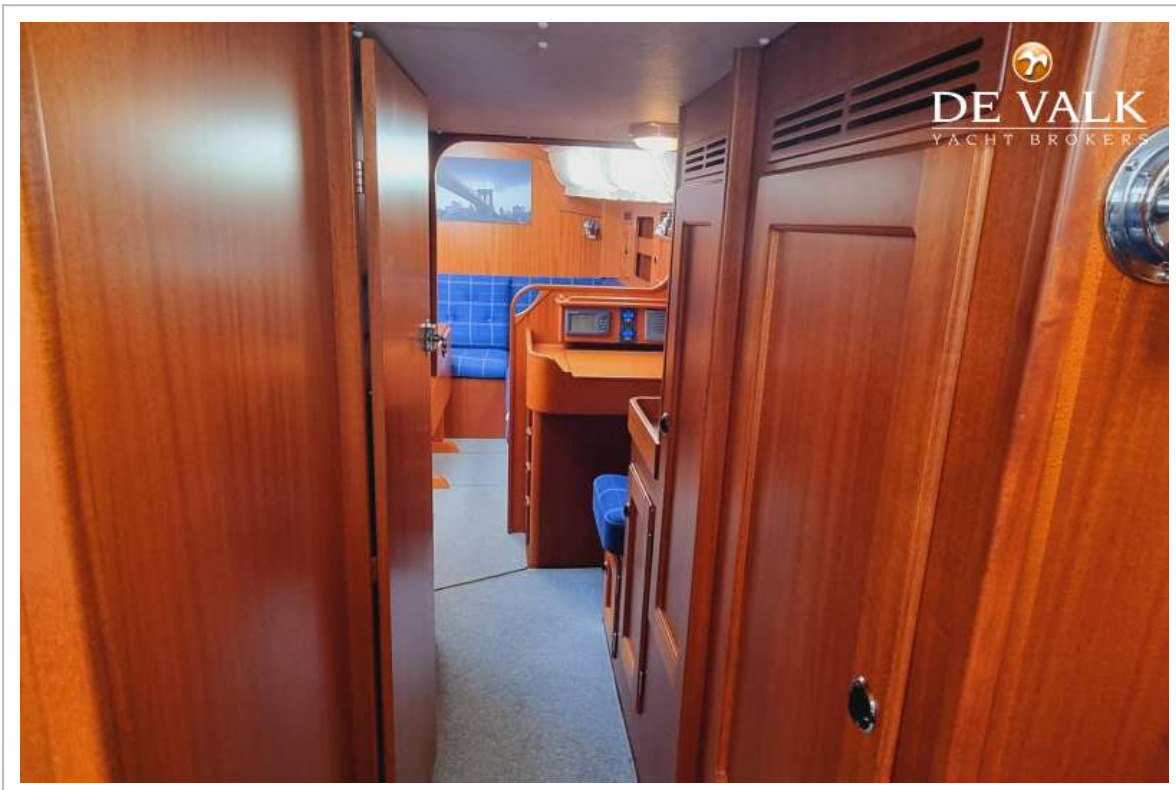
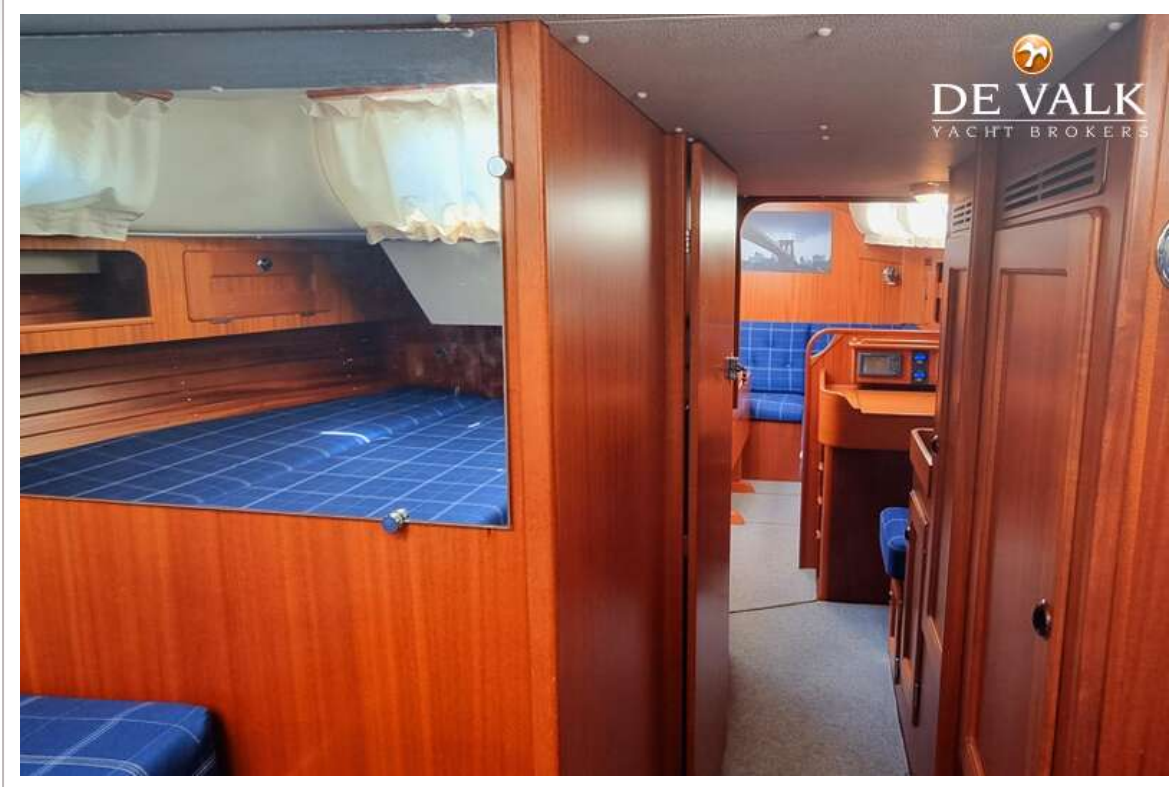
# HALLBERG RASSY 37



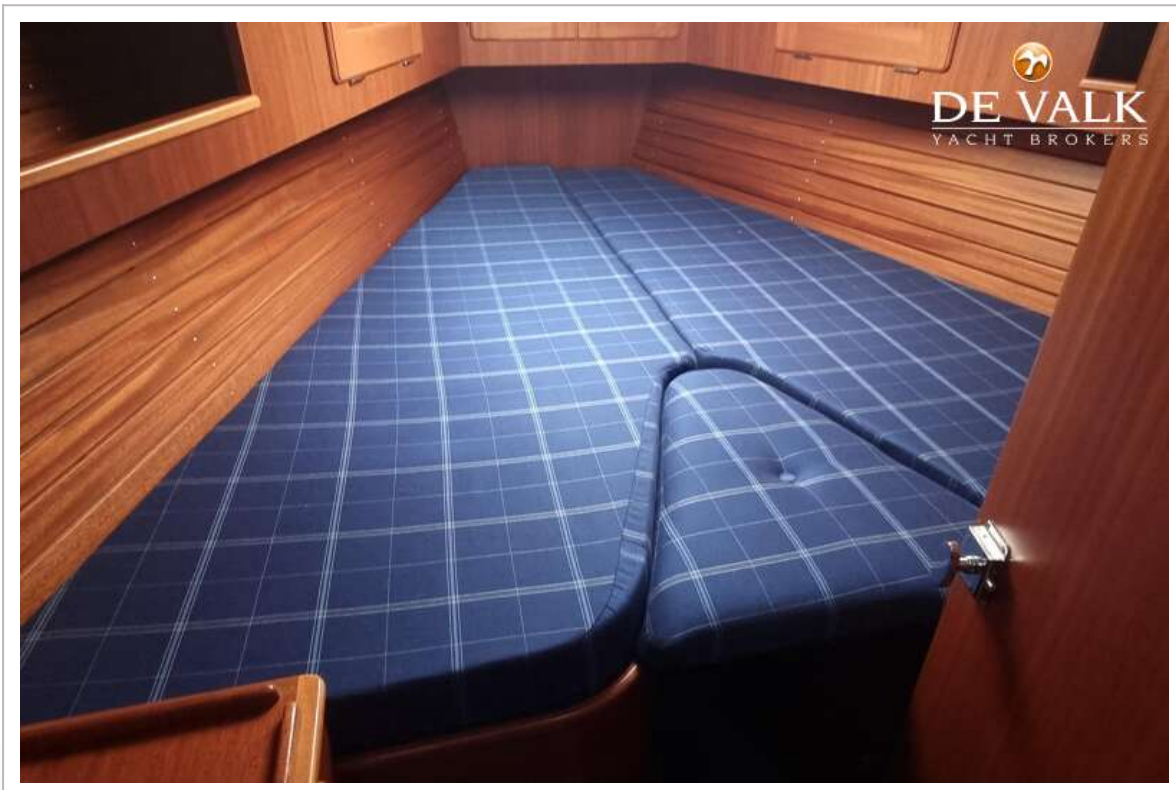
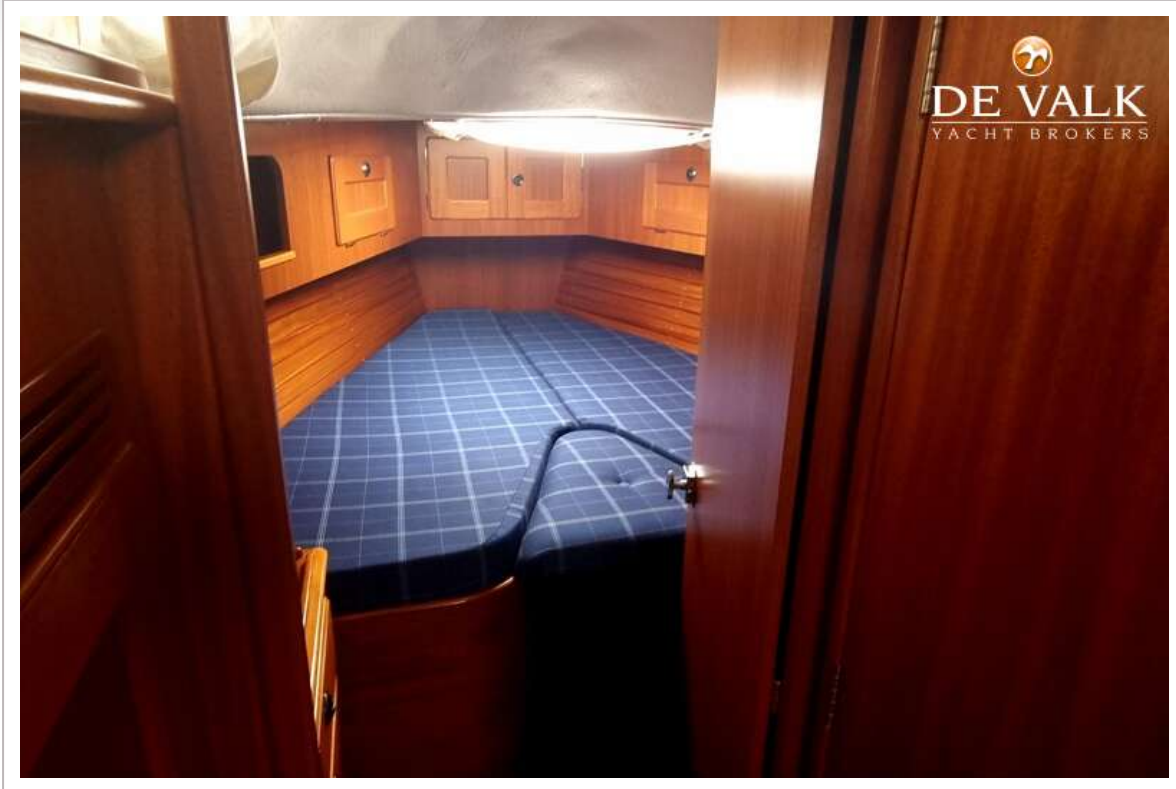
# HALLBERG RASSY 37



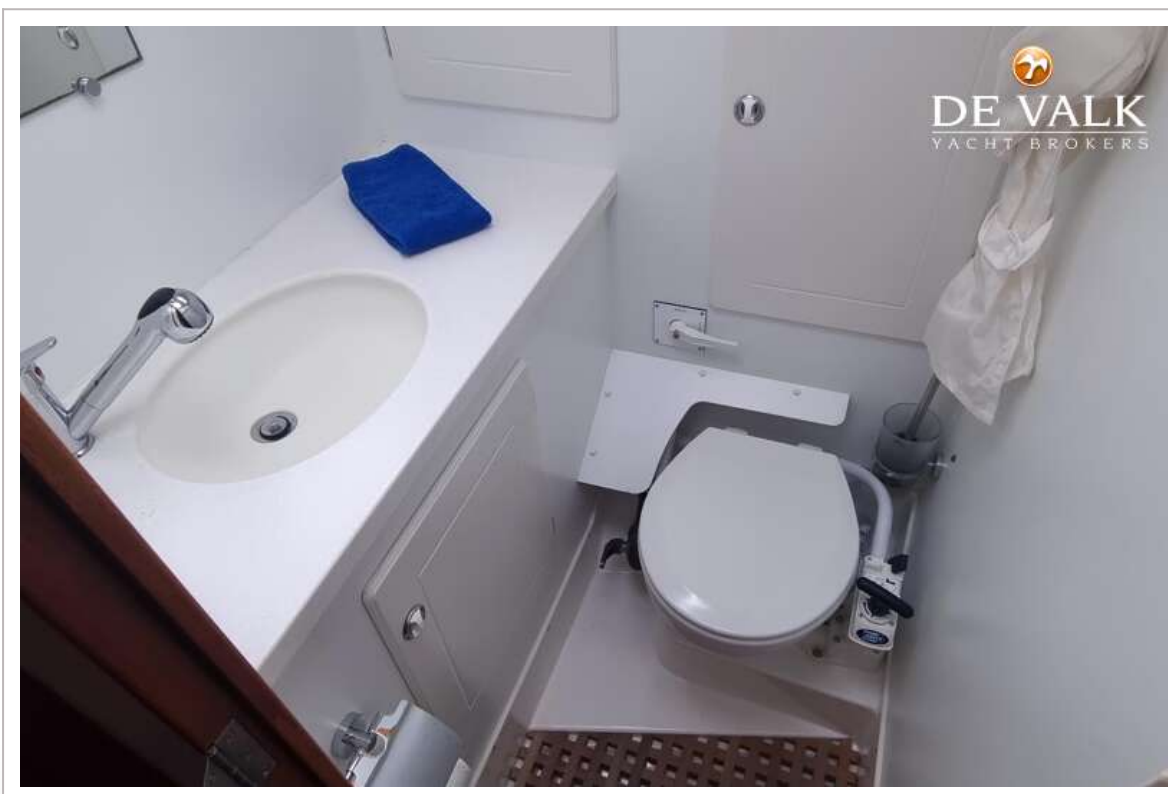
# HALLBERG RASSY 37



# HALLBERG RASSY 37



# HALLBERG RASSY 37





# HALBERG RASSY 37

