



DE VALK  
YACHT BROKERS



BALI 4.4



DE VALK  
YACHT BROKERS

## BROKER'S COMMENTS

This high-sided, sharp luxury Bali 4.4 is designed to make single-handed sailing comfortable. Voluminous deckhouses, all slightly angular, with low masts and a moderate sail area. In front, there is solid deck flooring, providing a proper level of privacy from neighbors on the pier. The interior is in impeccable condition, with 1 large master in the port side hull and 2 in-suite guest cabins in the stbd. hull. Many extras: A/C, electrical winches, 2X 52 HP Yanmar, full accommodation package and more. Well maintained and turnkey ready. Located south of Barcelona.

*Tue Simon Fasting*

## SPECIFICATIONS

<b>Dimensions</b>	13.48 x 7.40 x 1.26 (m)	<b>Builder</b>	Chantier Catana SAS
<b>Built</b>	2023	<b>Cabins</b>	3
<b>Material</b>	GRP	<b>Berths</b>	6
<b>Engine(s)</b>	2 x Yanmar 4JH57 diesel	<b>Hp/Kw</b>	2 x 52.00 (hp), 38.27 (kw)
<b>Asking price</b>	€ 574.000 (VAT Not paid)	<b>Lying</b>	at sales office

## CONTACT

<b>Sales office</b>	De Valk Barcelona	<b>Telephone</b>	+34 932 202 825
<b>Address</b>	Barcelona region 08392 Barcelona ES	<b>E-mail</b>	barcelona@devalk.nl

## DISCLAIMER

These particulars are given in good faith as supplied but cannot be guaranteed.



## GENERAL

<b>Model</b>	BALI 4.4
<b>Type</b>	catamaran motor yacht
<b>LOA (m)</b>	13,48
<b>Beam (m)</b>	7,40
<b>Draft (m)</b>	1,26
<b>Air draft (m)</b>	21,55
<b>Headroom (m)</b>	2,10
<b>Year built</b>	2023
<b>Launched</b>	2023
<b>Builder</b>	Chantier Catana SAS
<b>Country</b>	France
<b>Designer</b>	Olivier Poncin
<b>Displacement (t)</b>	13,60
<b>CE norm</b>	A
<b>Hull material</b>	GRP
<b>Hull shape</b>	Catamaran Twin Keel
<b>Deck finish</b>	non-skid moulded in
<b>Superstructure deck finish</b>	non-skid moulded in
<b>Cockpit deck finish</b>	non-skid moulded in
<b>Antifouling (year)</b>	2025
<b>Window frame</b>	yes
<b>Window material</b>	tempered glass
<b>Deckhatch</b>	yes
<b>Insulation</b>	yes
<b>Flybridge</b>	yes
<b>Flybridge suncover</b>	yes
<b>Fuel tank (litre)</b>	800
<b>Level indicator (fuel tank)</b>	yes
<b>Freshwater tank (litre)</b>	860
<b>Level indicator (freshwater)</b>	yes



<b>Blackwater tank (litre)</b>	yes
<b>Level indicator (blackwater)</b>	yes
<b>Blackwater tank extraction</b>	deck extraction + pump
<b>Wheel steering</b>	yes
<b>Flybridge helm position</b>	yes
<b>More info on hull</b>	The forepeaks are designed as ram compartments
<b>Extra info</b>	12% Spanish circulation tax paid
<b>Extra info</b>	Company owned, VAT exempt.

## ACCOMMODATION

<b>Cabins</b>	3
<b>Berths</b>	6
<b>Crew cabin</b>	yes
<b>Interior</b>	Lasta Design Studio
<b>Deck saloon</b>	yes
<b>Air-conditioning</b>	reverse cycle airco
<b>Navigation center</b>	yes
<b>Chart table</b>	yes
<b>Opening door to aft deck</b>	Upwards sliding door of the entire aft area
<b>Galley</b>	yes
<b>Sink</b>	stainless steel
<b>Cooker</b>	calor gas
<b>Oven</b>	yes
<b>Fridge</b>	yes
<b>Freezer</b>	yes
<b>Hot water system</b>	220V
<b>Water pressure system</b>	electrical
<b>Dishwasher</b>	yes
<b>Kettle</b>	yes
<b>Ice maker</b>	yes
<b>Coffee maker</b>	yes



<b>Crockery</b>	yes
<b>Owners cabin</b>	double bed Entire port side hull
<b>Wardrobe</b>	hanging/drawers/shelves
<b>Bathroom</b>	en suite
<b>Toilet system</b>	electric
<b>Shower</b>	en suite
<b>Guest cabin 1</b>	double bed Stbd forward
<b>Bathroom</b>	en suite
<b>Toilet</b>	yes
<b>Toilet system</b>	electric
<b>Shower</b>	en suite
<b>Guest cabin 2</b>	double bed Stbd aft
<b>Wardrobe</b>	hanging/drawers/shelves
<b>Bathroom</b>	en suite
<b>Shower</b>	en suite
<b>Flybridge</b>	With large seating area
<b>Extra info</b>	Acoustically / thermally isolated from the external environment

## MACHINERY

<b>No of engines</b>	2
<b>Make</b>	Yanmar
<b>Type</b>	4JH57
<b>HP</b>	52
<b>kW</b>	38.27
<b>Fuel</b>	diesel
<b>Year installed</b>	2023
<b>Maximum speed (kn)</b>	14
<b>Cruising speed (kn)</b>	8
<b>Consumption (l/hr)</b>	7
<b>Engine hours</b>	750
<b>Engine cooling system</b>	freshwater heat exchanger



Drive	shaft
Engine controls	electrical
Electric bilge pump	yes
Generator	silent separator Sole 10 KW
Start battery	2
Service battery	5
Generator battery	1
Battery charger	yes
Battery charger/inverter	yes
Shorepower	with cable

## NAVIGATION

Compass	yes
Compass on flybridge	yes
Multi control display	2 X Raymarine 12"
Depth sounder	Raymarine
Depth sounder/log	yes
Forw. looking depth sounder	Raymarine
VHF	2
VHF handheld	yes
Autopilot	Raymarine
Rudder angle indicator	yes
Radar	yes
Plotter/GPS	Raymarine
Radar/plotter	Raymarine double screen
Electronic chart(s)	yes
AIS receiver	Raymarine
AIS transponder	Raymarine
EPIRB	yes
Navigation lights	yes



## EQUIPMENT

<b>Bimini</b>	yes
<b>Gangway</b>	yes
<b>Dinghy</b>	rigid inflatable 15 hp outboard
<b>Life raft</b>	yes
<b>Lifejackets</b>	yes
<b>Fenders</b>	yes
<b>TV</b>	yes
<b>Cockpit speakers</b>	yes
<b>Speakers in salon</b>	yes
<b>Extra info</b>	Berth available

## RIGGING

<b>Rigging</b>	sloop
<b>Standing rigging</b>	wire
<b>Material mast</b>	aluminium
<b>Mainsail cover</b>	yes
<b>Fully battened mainsail</b>	74 m2
<b>Jib</b>	42 m2 self tacking
<b>Code Zero</b>	82 m2
<b>Reefing System</b>	slabreefing
<b>Boomvang</b>	hydraulic
<b>Multifunctional winches</b>	halyard/sheet winches Lewmar electric
<b>Winchcovers</b>	yes



# BALI 4.4



# BALI 4.4



# BALI 4.4



# BALI 4.4

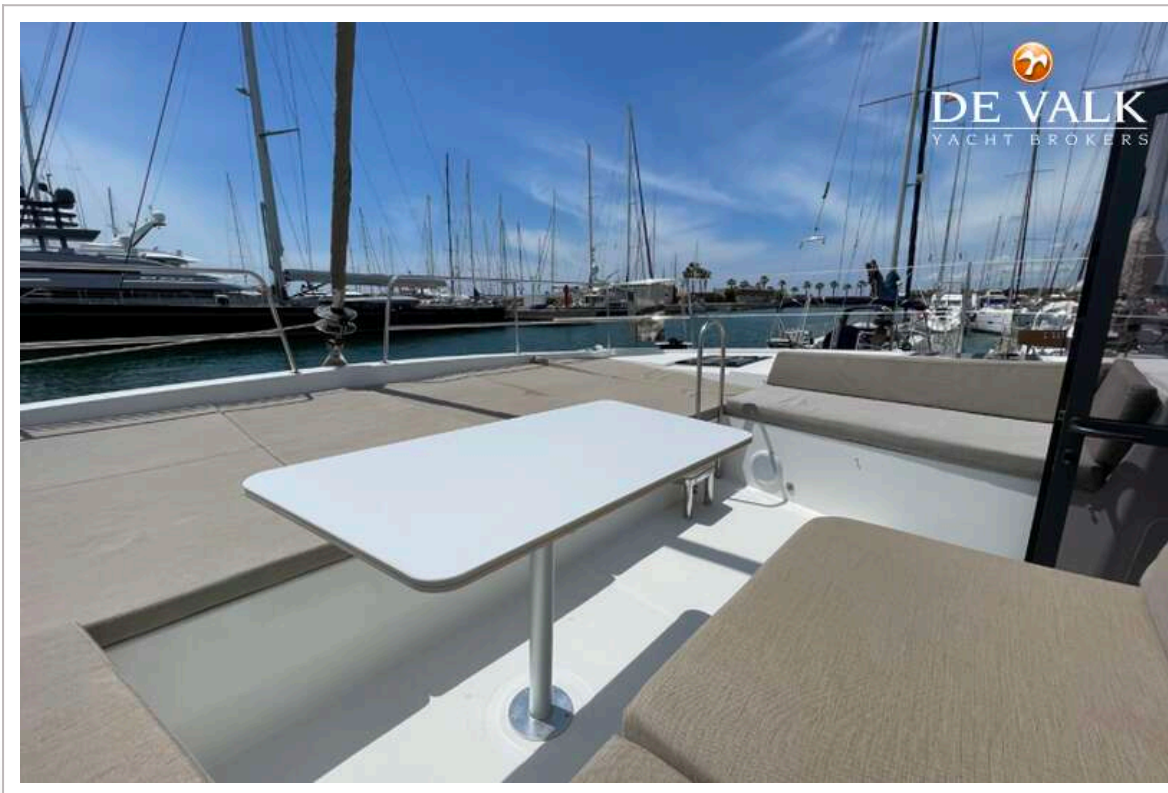
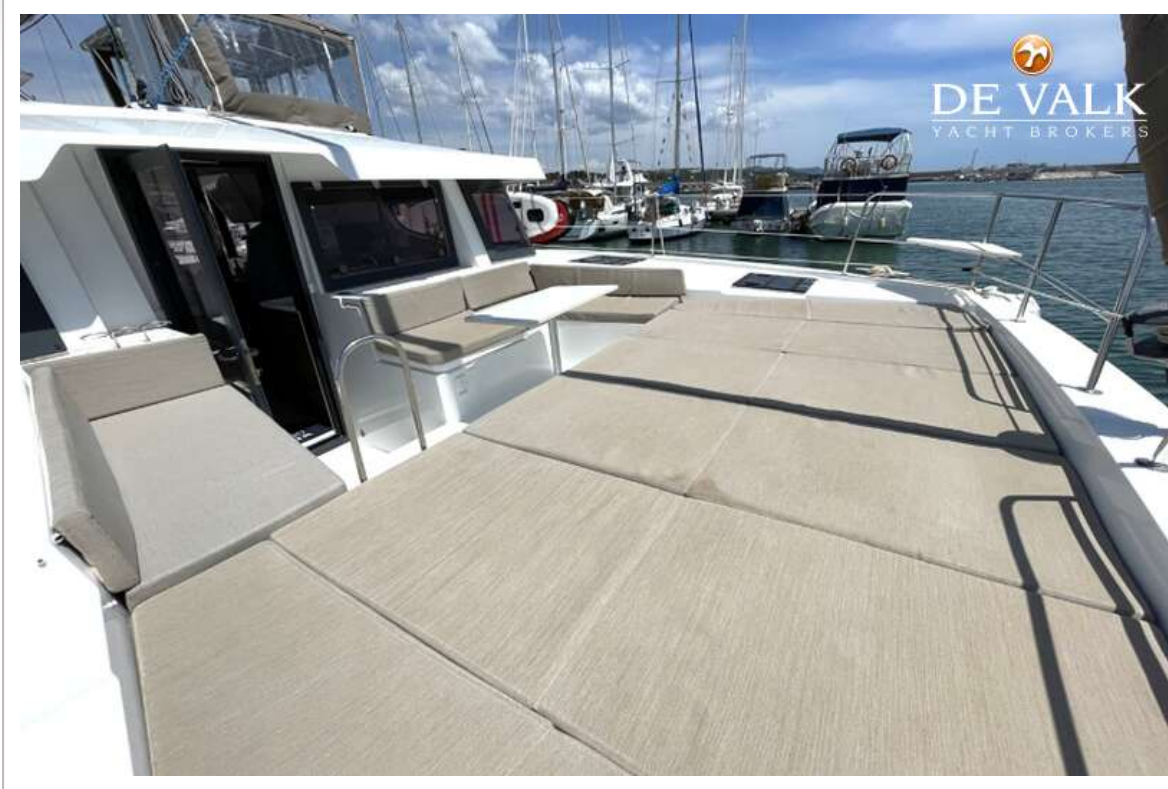




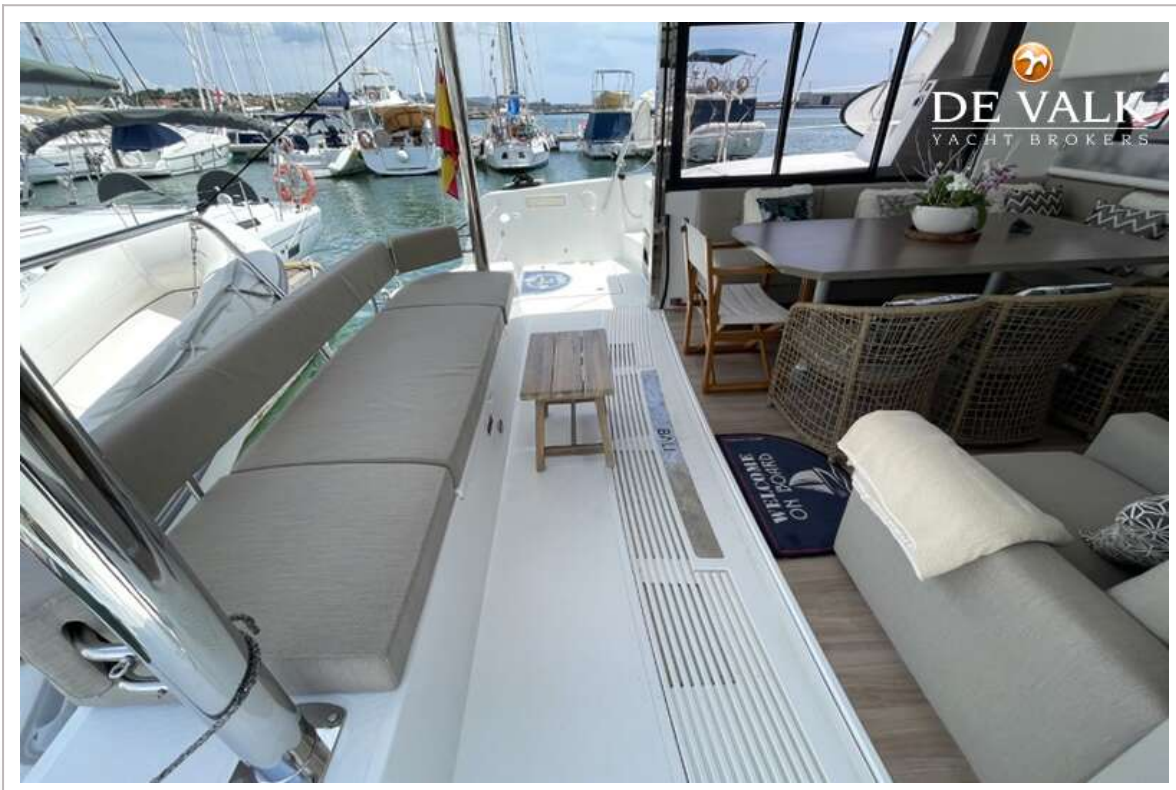
# BALI 4.4



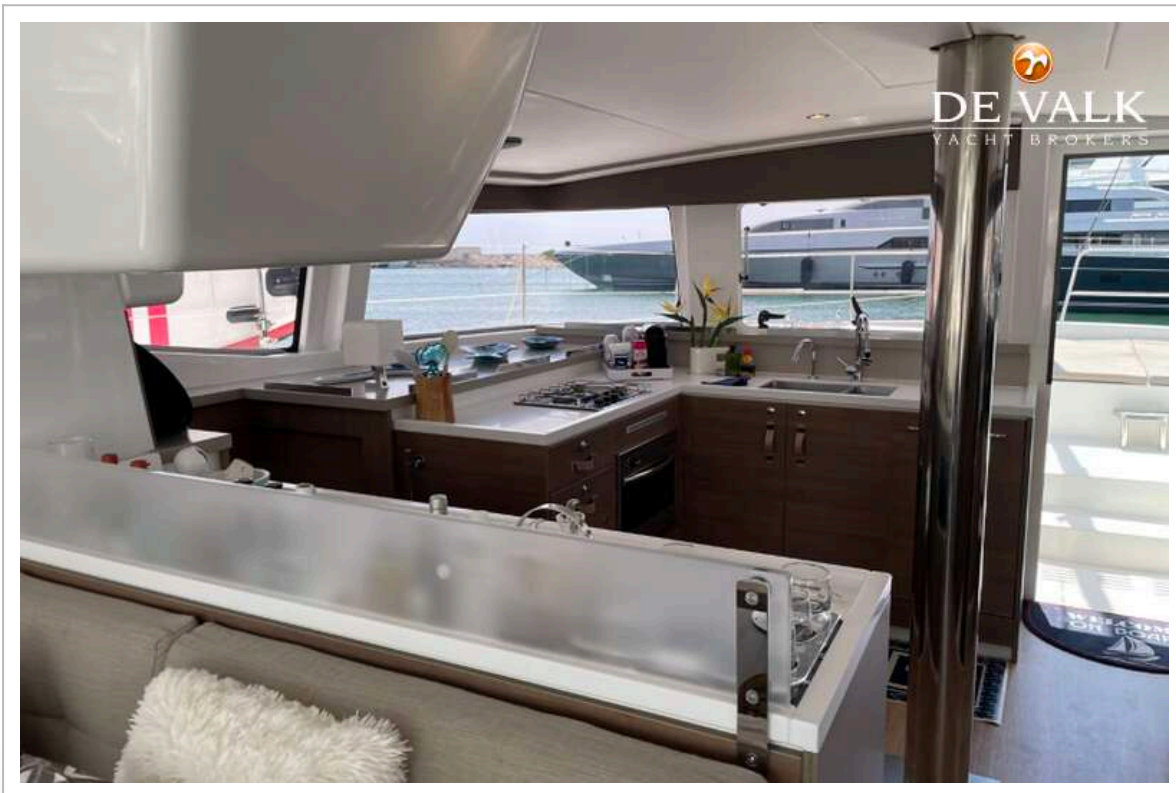
# BALI 4.4





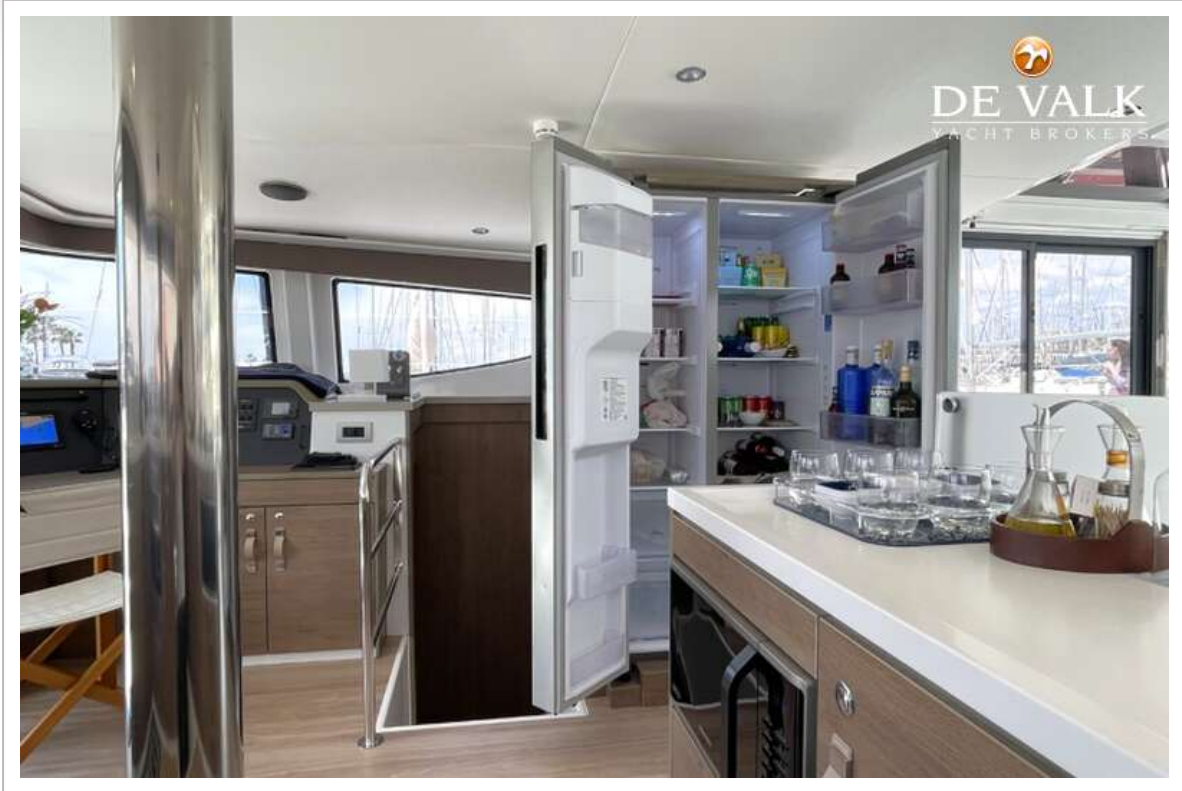


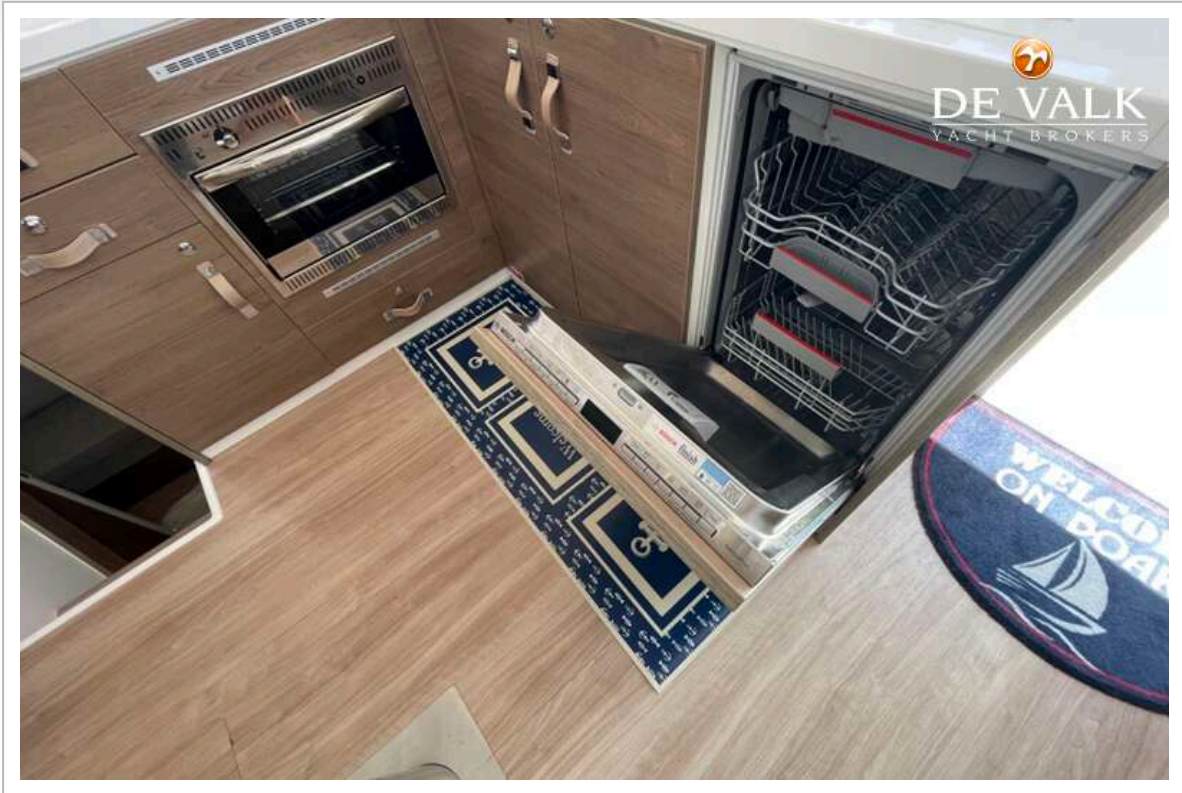




# BALI 4.4

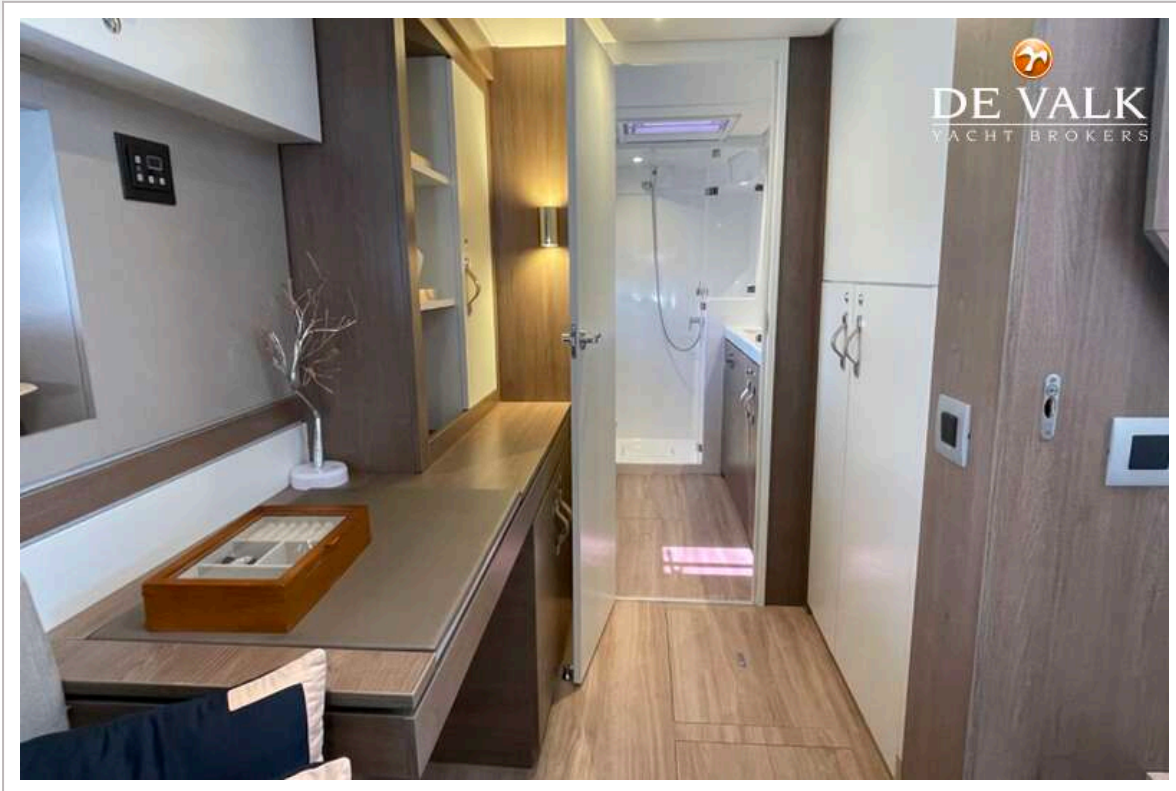






# BALI 4.4







# BALI 4.4



