



DE VALK
YACHT BROKERS



NOBLESSE 38 XL



DE VALK
YACHT BROKERS

NOBLESSE 38 XL

BROKER'S COMMENTS

The Noblesse 38 XL is a steel motor yacht built in Sneek. This Noblesse had only two private owners that kept her in a covered mooring. Equipped with a Volvo Penta diesel engine, bow- and stern thruster. This Noblesse 38 XL is very nice maintained, lots of recent upgrades and renewals, ready to go on holiday. For an inspection please make an appointment with our Sneek office.

Pieter Bosma

SPECIFICATIONS

Dimensions	12.20 x 3.90 x 1.10 (m)	Builder	Noblesse Yachts
Built	2009	Cabins	2
Material	Steel	Berths	4
Engine(s)	1 x Volvo D3-130 diesel	Hp/Kw	130.00 (hp), 95.55 (kw)
Asking price	Under Offer (VAT)	Lying	elsewhere / Not at sales office

CONTACT

Sales office	De Valk Sneek	Telephone	+31 (0)515 42 80 30
Address	Zwolsmanweg 7 8606 KC Sneek NL	E-mail	sneek@devalk.nl

DISCLAIMER

These particulars are given in good faith as supplied but cannot be guaranteed.



GENERAL

Model	NOBLESSE 38 XL
Type	motor yacht
LOA (m)	12,20
Beam (m)	3,90
Draft (m)	1,10
Air draft (m)	2,80
Year built	2009
Builder	Noblesse Yachts
Country	The Netherlands
Designer	M. Bekebrede
Displacement (t)	12
CE norm	C
Hull material	steel
Hull colour	red
Hull thickness (mm)	5 mm
Hull shape	hard chine
Keel type	long keel
Superstructure material	steel
Superstructure (mm)	4 mm
Deck plate thickness (mm)	4 mm
Rubbing strake	stainless steel
Deck material	steel
Deck finish	non-skid paint
Superstructure deck finish	paint
Antifouling (year)	16-06-2023
Dorades	yes
Window frame	aluminium
Window material	double glazing
Deckhatch	yes
Insulation	rockwool



NOBLESSE 38 XL

Radar arch	collapsible
Fuel tank (litre)	steel 740 Ltr
Level indicator (fuel tank)	VDO
Freshwater tank (litre)	stainless steel 500 Ltr
Level indicator (freshwater)	VDO
Blackwater tank (litre)	stainless steel 250 Ltr
Level indicator (blackwater)	VDO
Blackwater tank extraction	deck extraction + pump
Wheel steering	hydraulic
Outside helm position	yes
Extra info	Sold by her second owner. Both the first and the second owner stored the yacht on a inside mooring

ACCOMMODATION

Cabins	2
Berths	4
Interior	cherry
Floor	carpet Carpet replaced 10/2022
Aft deck	yes
Saloon	yes
Headroom saloon (m)	2,05 m
Heating	central hot water Kabola Hr400 combi
Aft Cabin	yes
Dinette	yes
Opening door to aft deck	yes
Galley	yes
Countertop	corian
Sink	stainless steel
Cooker	Smev 3 burner
Extractor	Etna
Microwave	yes



NOBLESSE 38 XL

Microwave/oven combi	Severin
Fridge	with freezer compartment Kissman 150L
Hot water system	on central heating
Water pressure system	electrical
Owners cabin	French bed
Bed length (m)	2.00 m
Wardrobe	hanging and drawers
Bathroom	en suite
Toilet	en suite
Toilet system	electric
Wash basin	in the bathroom
Shower	en suite Seperate from toilet
Guest cabin 1	v-bed
Bed length (m)	2.00 m.
Wardrobe	hanging and drawers
Bathroom	shared
Toilet	shared
Toilet system	electric
Wash basin	in the bathroom

MACHINERY

No of engines	1
Make	Volvo
Type	D3-130
HP	130
kW	95.55
Fuel	diesel
Maximum speed (kn)	8
Engine hours	1698
Drive	shaft
Shaft seal	yes



NOBLESSE 38 XL

Engine controls	mechanical
Gearbox	ZF45a
Bowthruster	electric
Sternthruster	electric
Exhaust	watercooled
Thrust bearing	yes
Propeller type	fixed
Propeller blades	4
Propeller shaft material	stainless steel
Shaft lubrication	water
Electric bilge pump	yes
Electrical installation	24V
Start battery	12V, 1x
Service battery	2022 24V 4x Varta semi tractie 240 Ah
Bowthruster battery	24V, 2 optima Red Top 50 AH batteries
Sternthruster battery	24V, 2 optima Red Top Batteries
Battery monitor	Mastervolt BTM
Battery charger/inverter	replaced 12-2023 Mastervolt Combimaster 24/3000 60
Solar panel	2x
Diode battery combiners	yes
Shorepower	with cable
Extra info	last service 17-05-2024

NAVIGATION

Depth sounder	Raymarine ST60
Log	Raymarine ST60
Windset	Raymarine
VHF	Raymarine Ray 240E
Autopilot	Raymarine ST6002
Rudder angle indicator	Raymarine ST60
Plotter/GPS	Raymarine E80



Wifi antenna	yes
Navigation lights	yes
Searchlight	Jabsco

EQUIPMENT

Fixed windscreen	yes
Sprayhood	placed 10-2022
Cockpit cover	placed 10-2022
Cockpit cushions	yes
Bathing platform	yes
Boarding ladder	stainless steel
Deck shower	yes
Anchor	yes
Anchor chain	yes
Windlass	electrical Lofrance
Deck wash	yes
Davits	stainless steel
Davits controls	manual
Sea railing	stainless steel
Grab rail (superstructure)	yes
Railing side opening gates	yes
Wiper	3x
Horn	electric
Fenders	yes
Mooring lines	yes
TV	LCD
Radio-cd player	JVC
Clock - barometer	yes
Fire extinguisher	yes
Extra info	easy access to bathing platform



NOBLESSE 38 XL



NOBLESSE 38 XL



NOBLESSE 38 XL



NOBLESSE 38 XL



NOBLESSE 38 XL



NOBLESSE 38 XL



NOBLESSE 38 XL



NOBLESSE 38 XL



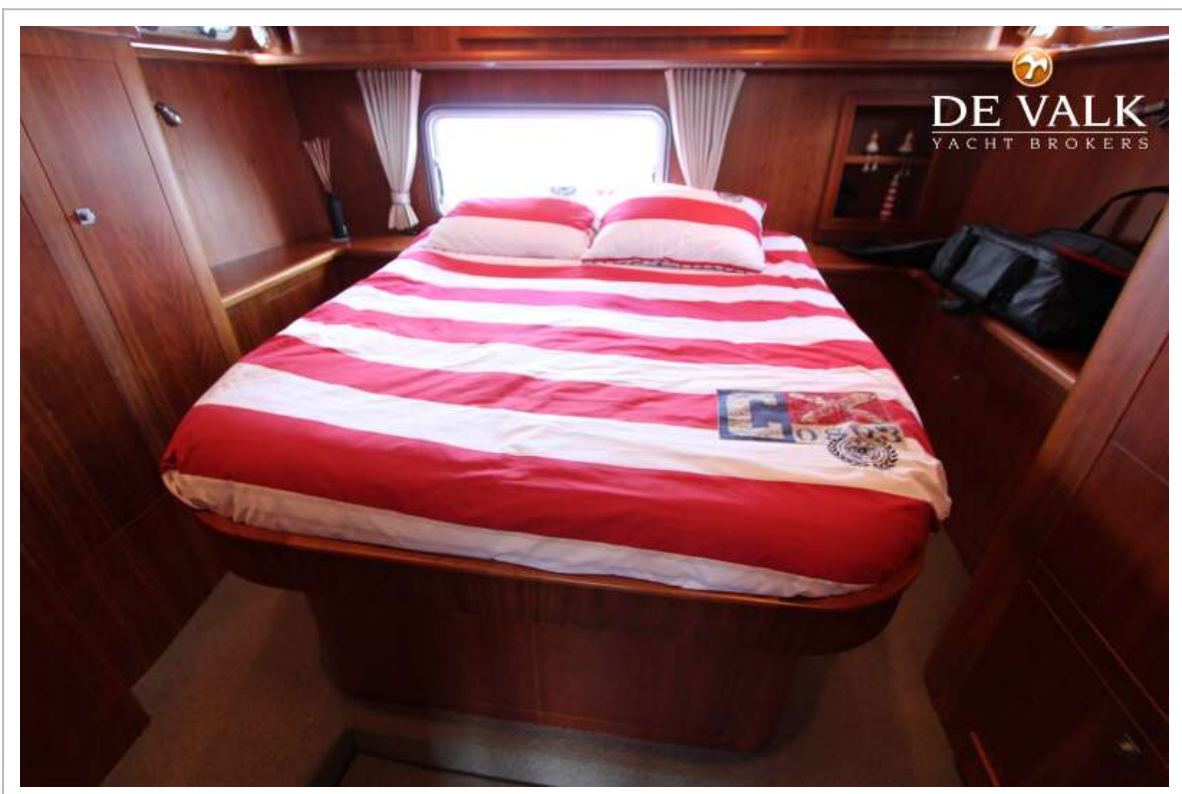
NOBLESSE 38 XL



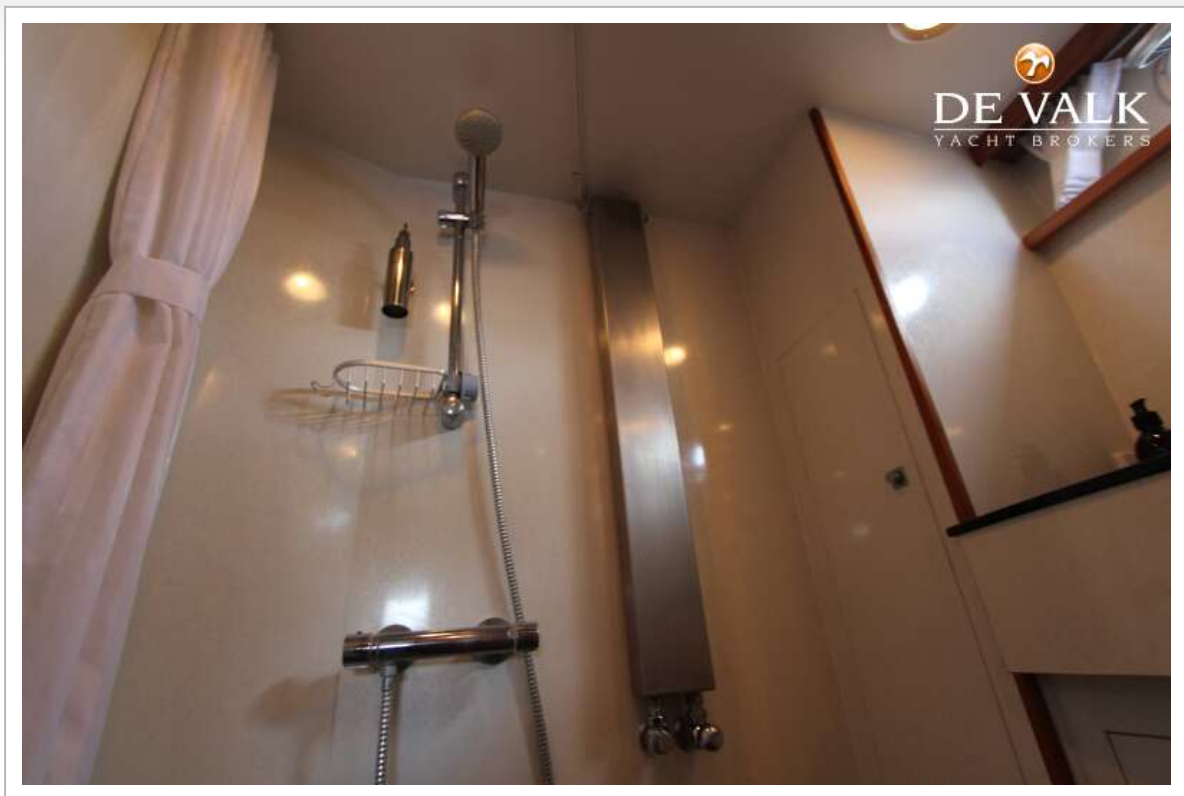
NOBLESSE 38 XL



NOBLESSE 38 XL



NOBLESSE 38 XL



NOBLESSE 38 XL

