



## GARCIA EXPLORATION 45



# GARCIA EXPLORATION 45

## BROKER'S COMMENTS

Nusquama is hull #33 of the renowned Garcia Exploration 45, Jimmy Cornell's vision of the perfect long-distance cruiser. Built in Aluminium with twin rudders and a protected cockpit, she's designed for high-latitude and tropical sailing alike. This 2-cabin "comfort" version boasts a bright saloon with panoramic views, a forward owner's suite, and extensive autonomy: 1125W Solar Power, Spectra Watermaker, upgraded Lithium Battery Bank. Nusquama, derived from Latin, means both 'Utopia' and 'No Place', a fitting name for a yacht built to take you anywhere, even to the edges of the map.

*Tom Kingham*

## SPECIFICATIONS

<b>Dimensions</b>	14.88 x 4.44 x 1,14 / 2.90 (m)	<b>Builder</b>	Garcia Yachts
<b>Built</b>	2022	<b>Cabins</b>	2
<b>Material</b>	Aluminium	<b>Berths</b>	
<b>Engine(s)</b>	1 x Volvo Penta D2-75 diesel	<b>Hp/Kw</b>	75.00 (hp), 55.20 (kw)
<b>Asking price</b>	€ 899.000 (VAT Not paid)	<b>Lying</b>	at sales office

## CONTACT

<b>Sales office</b>	De Valk Palma	<b>Telephone</b>	+34 971 40 29 11
<b>Address</b>	Port. Cala Nova, Avda. Joan Miro, 327 07015 Palma de Mallorca ES	<b>E-mail</b>	palma@devalk.nl

## DISCLAIMER

These particulars are given in good faith as supplied but cannot be guaranteed.



## GENERAL

Model	GARCIA EXPLORATION 45
Type	sailing yacht
LOA (m)	14,88
Beam (m)	4,44
Draft (m)	2,90
Draft min (m)	1,14
Air draft (m)	19,80
Year built	2022
Builder	Garcia Yachts
Country	France
Designer	BerretRacoupeau Yacht Design
Displacement (t)	14,61
CE norm	A
Hull material	aluminium
Hull colour	Grey aluminium
Superstructure material	Vacuum infusion composite
Deck material	Aluminium
Deck finish	Flexiteek
Antifouling (year)	2025
Window material	Double glazed 270°
Deckhatch	6 x Lewmar deckhatches
Portholes	4 x Lewmar
Insulation	74mm for hull and 37mm for deck
Fuel tank (litre)	350
Fuel tank 2 (litre)	350
Freshwater tank (litre)	2 x 250
Level indicator (freshwater)	Yes
Blackwater tank (litre)	250
Greywater tank (litre)	250
Wheel steering	Twin steering in cockpit



More info on hull

Hull has been inspected throughout winter yard period

More info on paintwork

Aluminium refreshing treatment has been applied

Extra info

Yacht has had full time captain and management team

Extra info

SALE IN PARTNERSHIP WITH GL YACHTING

## ACCOMMODATION

Cabins

2

Deck saloon

Located central/starboard on an elevated platform

Doghouse

Yes

Saloon

U-shaped bench with seats

Headroom saloon (m)

<2.0

Heating

Webasato

Air-conditioning

6 x 12V electric fans

Navigation center

Forward facing chart table with control panel for instruments

Aft Cabin

Custom-fitted technical room - Storage drawers and tool lockers

Convertible berth

Saloon table convertible double bed

Opening door to cockpit

Yes

Galley

Kitchen unit located portside hull

Countertop

Yes

Sink

2 x stainless steel integrated into resin worktop

Cooker

Gas hob on gimble

Oven

Electric

Extractor

Yes

Gas alarm

Carbon Monoxide

Fridge

Double sliding fridge

Freezer

12V VITRIFRIGO drawer freezer

Hot water system

40L

Owners cabin

Forward

Bed length (m)

Central double bed

Wardrobe

Hanging shelves and draws

Bathroom

En-suite



<b>Toilet</b>	Yes
<b>Toilet system</b>	Electric JABSCO quiet flush
<b>Shower</b>	Yes
<b>Guest cabin 1</b>	Port aft
<b>Bed length (m)</b>	Double bed
<b>Wardrobe</b>	Hanging shelves and storage under bed
<b>Extra info</b>	1 x watertight hatch on aft bulkhead to access stern compartment
<b>Washing machine</b>	Yes

## MACHINERY

<b>No of engines</b>	1
<b>Make</b>	Volvo Penta
<b>Type</b>	D2-75
<b>HP</b>	75
<b>kW</b>	55.20
<b>Fuel</b>	diesel
<b>Year installed</b>	2025
<b>Year of overhaul</b>	JULY 2025 NEW
<b>Engine cooling system</b>	Freshwater cooling
<b>Engine controls</b>	Saildrive
<b>Bowthruster</b>	Yes including 2 AGM 12V batteries with dedicated charger
<b>Propeller type</b>	Folding
<b>Electric bilge pump</b>	1 x primary 1 x sail locker 1 x forward compartment
<b>Bilge alarm</b>	Yes
<b>Generator 2</b>	Watt and Sea Hydrogenerator
<b>Batteries</b>	Lithium electricity pack 12V fpr GE45
<b>Service battery</b>	3 x Lithium
<b>Battery charger</b>	Yes
<b>Inverter</b>	Yes
<b>Battery charger/inverter</b>	Yes
<b>Solar panel</b>	3 x 400W Seatronic panels with Victron BT monitoring controllers



Shorepower	Cable 220V
Watermaker	Yes
Extra info	Upgraded Lithium battery system with additional batteries

## NAVIGATION

Electric compass	Precision 9 compass
Multi control display	B&G electronic pack 2 x 12" screens
Depth sounder	Yes
Windset	Yes
Repeater	3 x Triton display units
VHF	Fusion RA770
Autopilot	NAC3 Autopilot drive with spare installed
Wind vane steering install.	Yes
Radar	4G Broadband radar
GPS	ZG100
Plotter	B&G
Wifi antenna	Yacht router AMPLI and WIFI booster
AIS receiver	Yes
AIS transponder	NAIS 500 classB
Radio receiver	Yes
EPIRB	Yes

## EQUIPMENT

Fixed windscreen	Yes
Fixed hardtop	Doghouse
Bimini	Yes
Cockpit cushions	Yes
Cockpit table	Teak folding table with cover
Boarding ladder	Yes
Anchor	35kg Spade galvanized
Anchor chain	100m galvanized 10mm chain with shackles and snubber line



Chain counter	Yes
Dinghy	Highfield Hypalon 290
Outboard	Tohatsu 6 HP
Outboard support	Lift
Life raft	Yes serviced 2025
Lifejackets	Yes serviced 2025
Lifebuoy	Yes serviced 2025
Rope cutter	Yes
Fenders	Yes with spares
Mooring lines	Yes with spares
Spare parts	All in lockup. Further details upon request
Tools	Various necessary tools in starboard side technical room
Radio	Fusion RA770 BT
Cockpit speakers	2 x outside loudspeaker (Fusion)
Speakers in salon	2 x inside loudspeaker (Focal)
Fire extinguisher	4 x serviced 2025
Extra info	Chain rinsing pump in sail locker
Extra info	Private storage lockup containing spares, safety gear, technical
Extra info	Negotiations possible for purchase of lockup contents. TBC

## RIGGING

Rigging	Single strand stainless steel wire
Standing rigging	Performance rigging package
Material mast	Aluminium
Spreaders	2 pairs
Mainsail	Fully battened in Hydranet with Triradial cut
Fully battened mainsail	Yes
Furling boom	Aluminium alloy anodised boom
Main staysail	Incidence Hydranet staysail on a furler
Jib	Incidence Hydranet solent
Gennaker	Yes on a sock



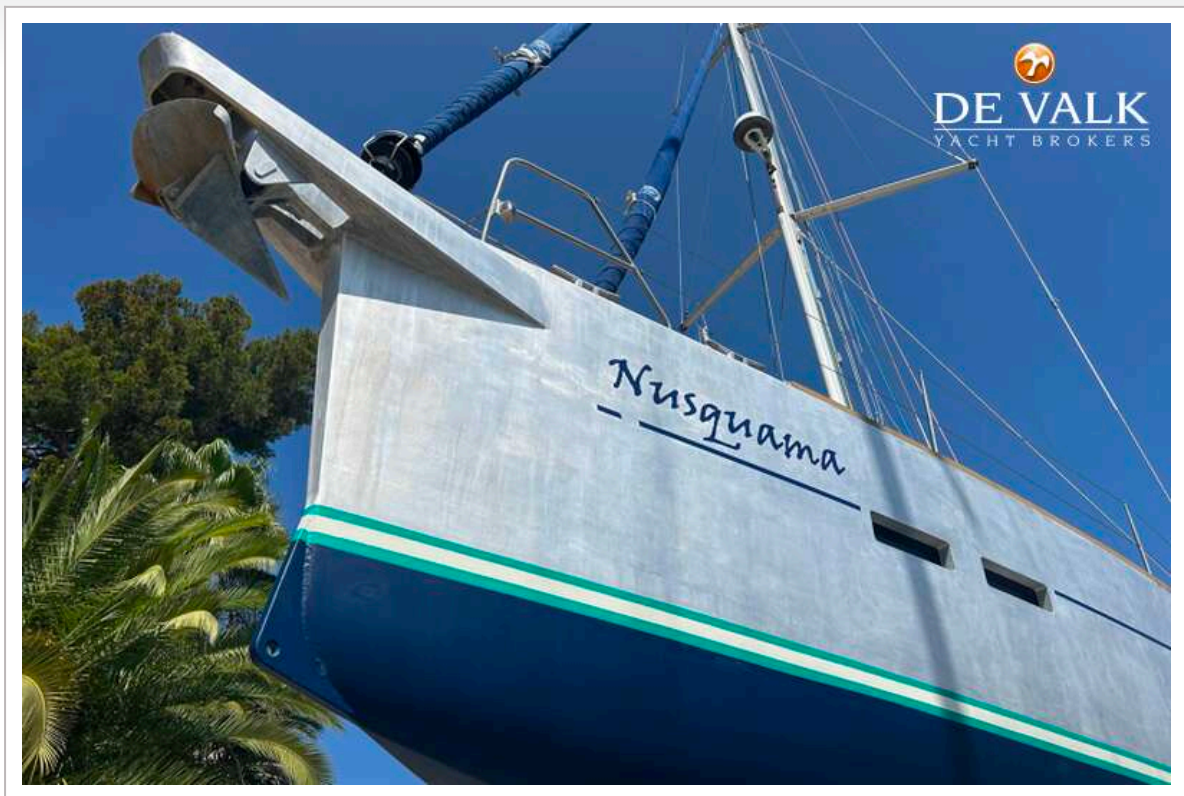
Reefing System	4 reefs possible
Primary sheet winch	2 x electric ST50 2 speed on cockpit coamings
Secondary sheet winch	2 x electric ST45 2 speed
Spi-pole	CARBONE Aluminium pole with fittings
Extra info	Removable textile protection for watch position under coach roof
Extra info	Centreboard with 2.9m draft when down - 2.0m when lifted





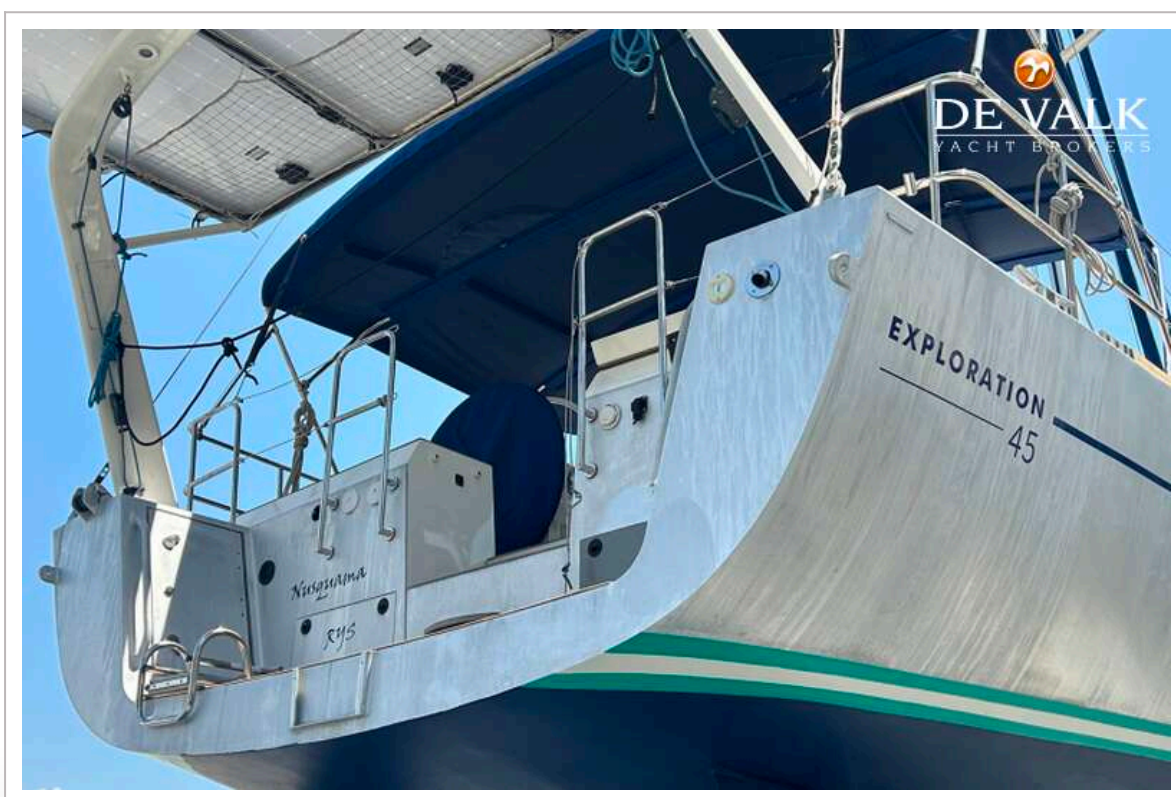
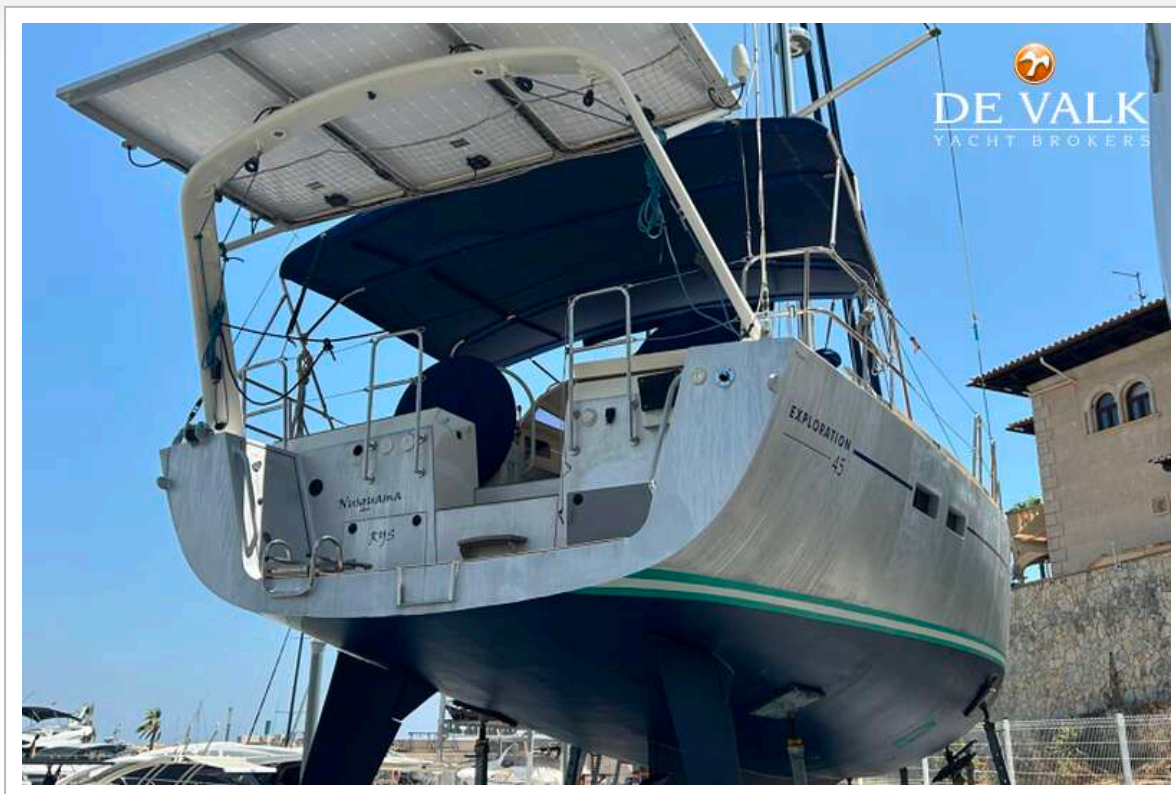


# GARCIA EXPLORATION 45

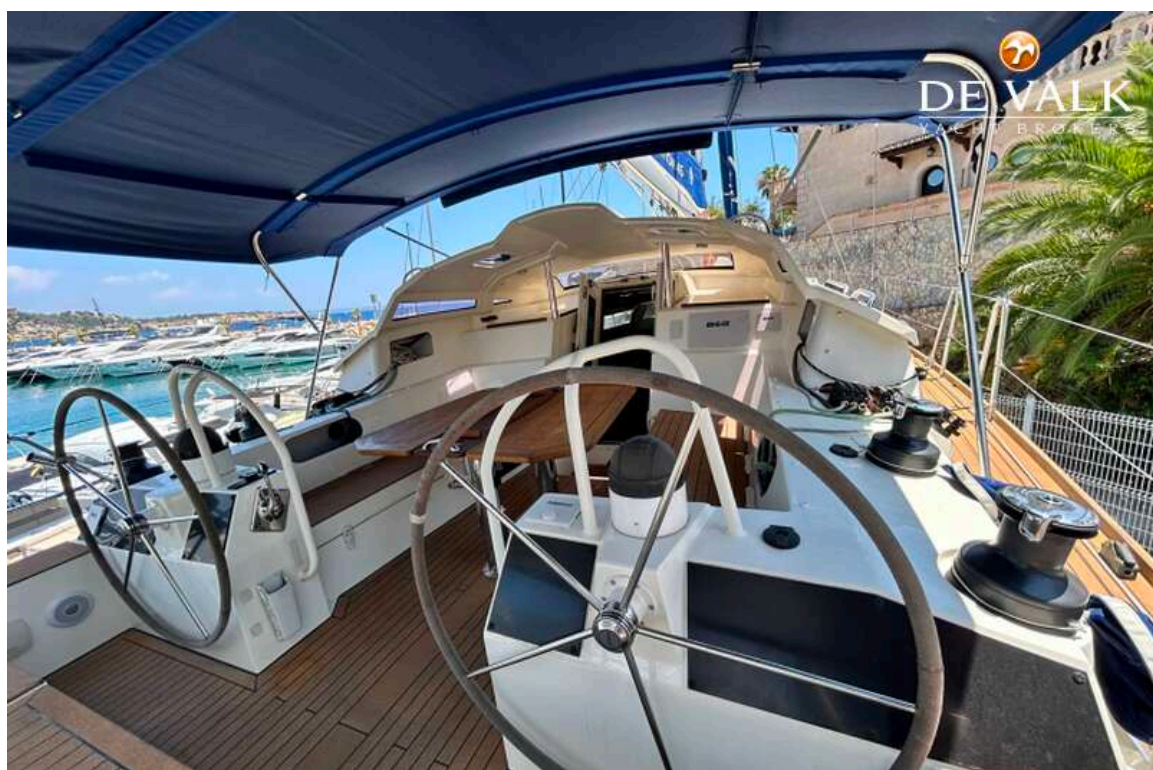
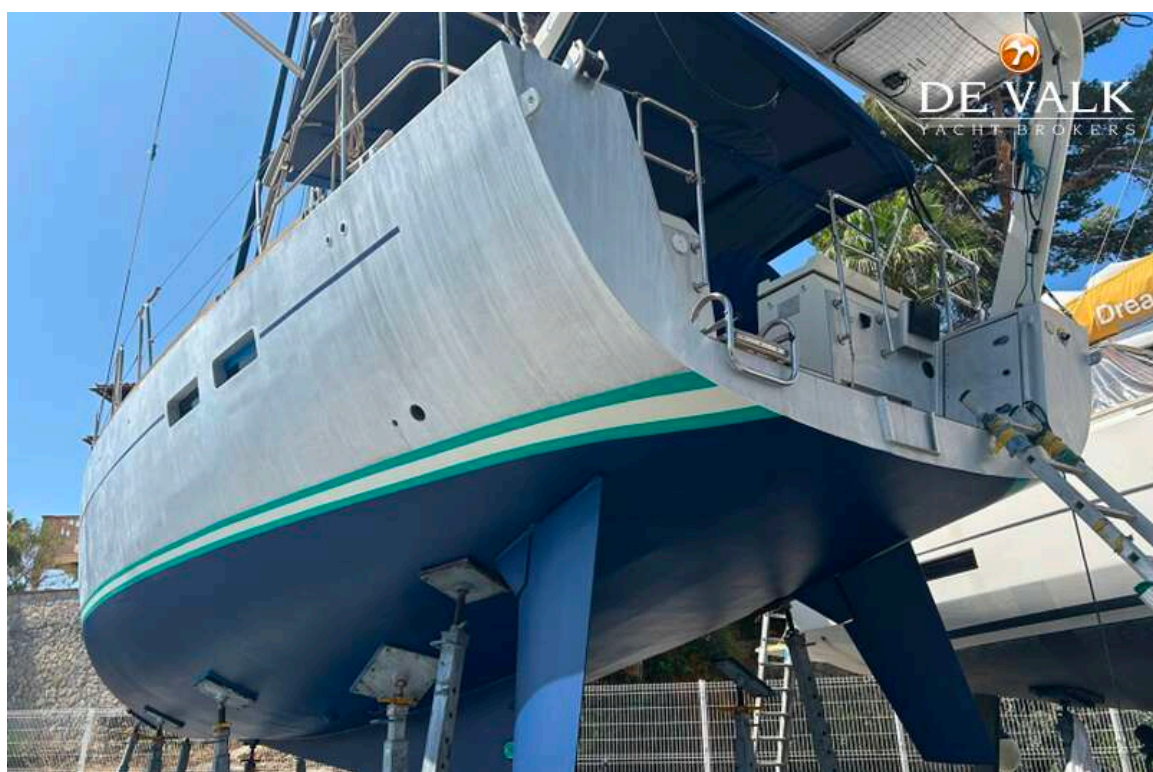




# GARCIA EXPLORATION 45

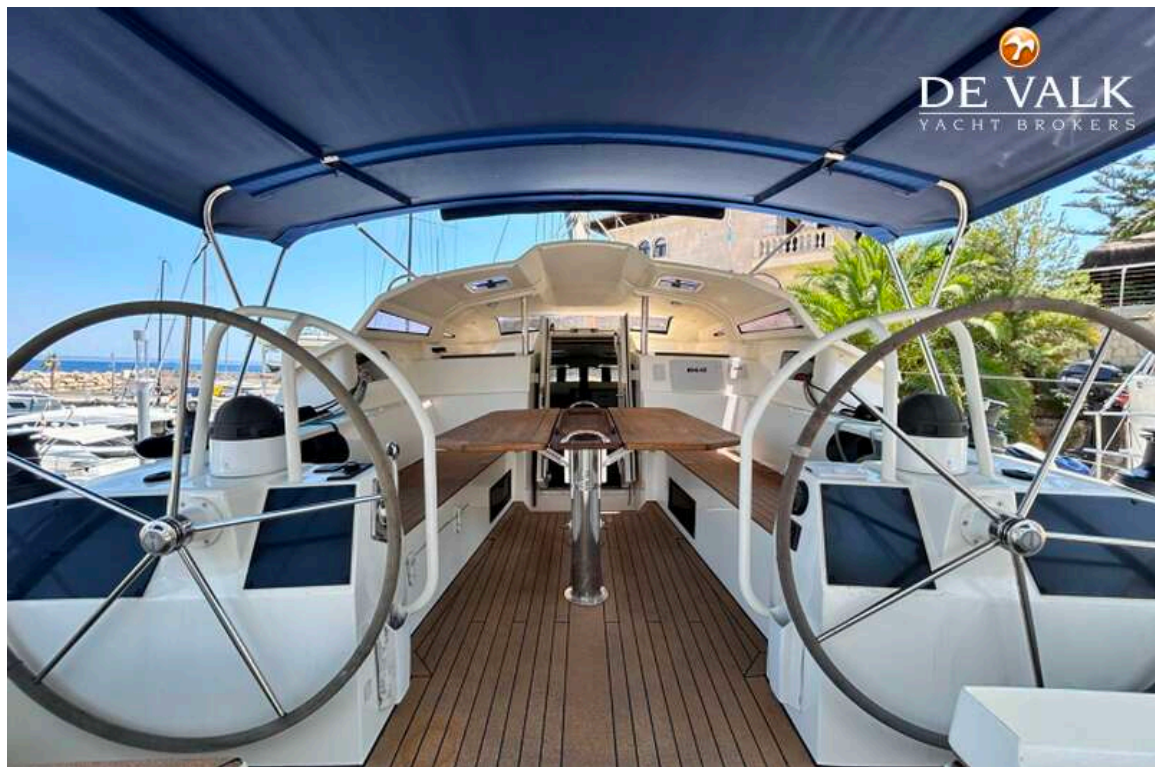








## GARCIA EXPLORATION 45

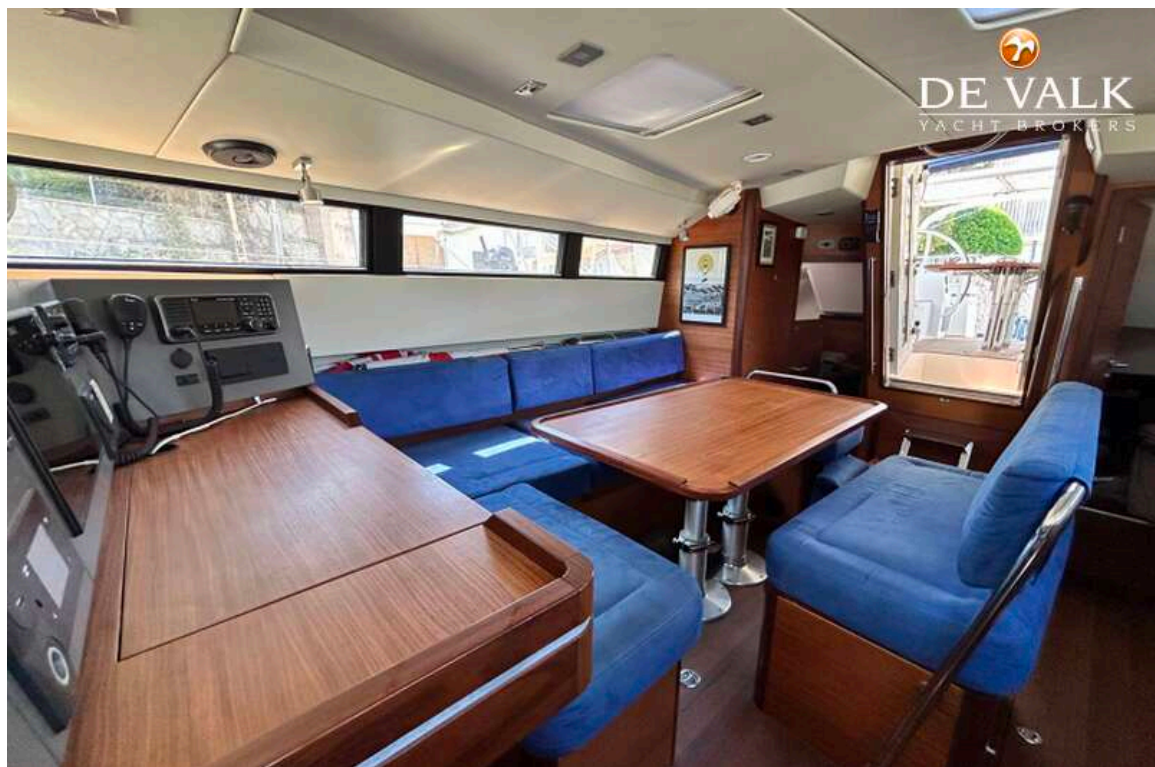


## GARCIA EXPLORATION 45

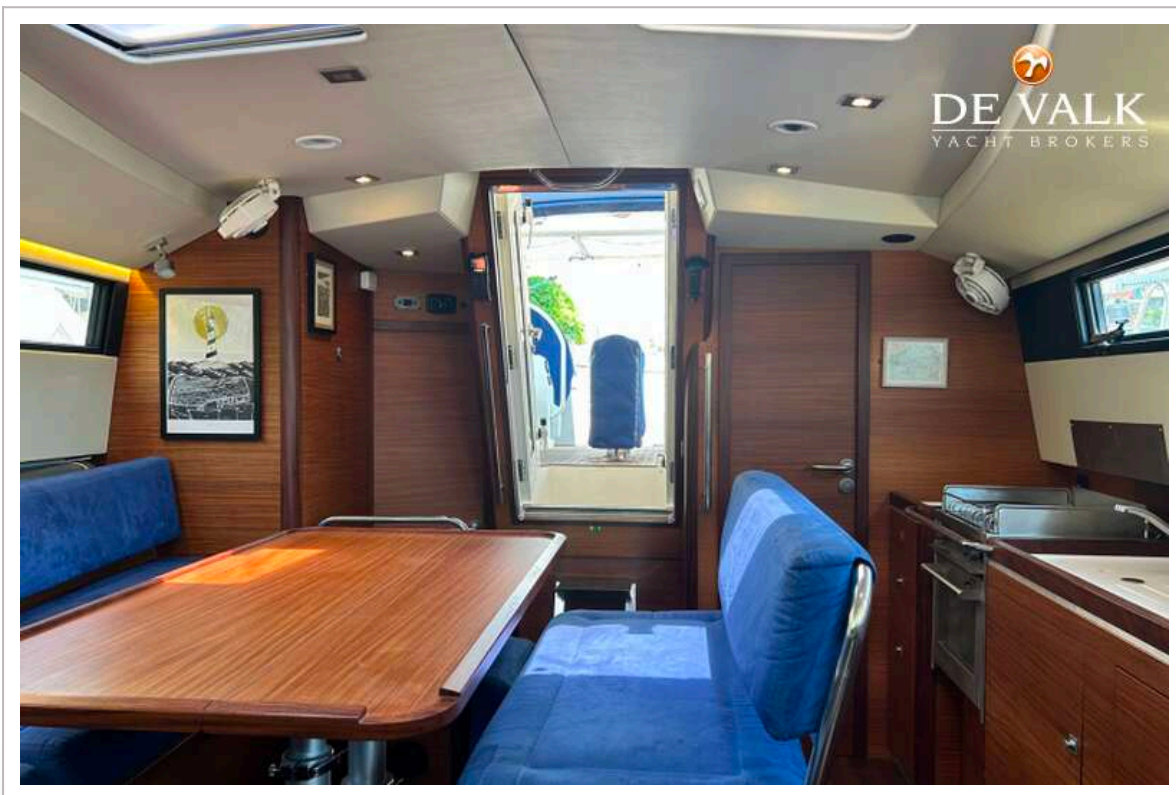
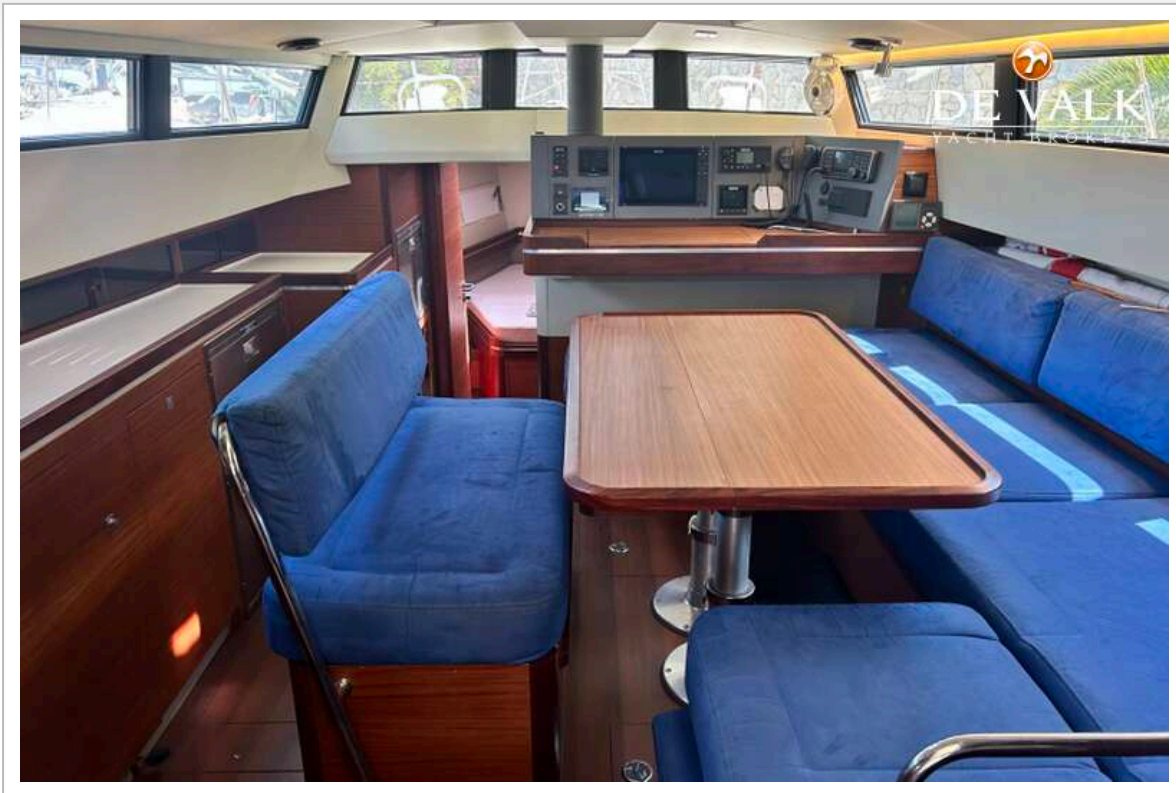




## GARCIA EXPLORATION 45

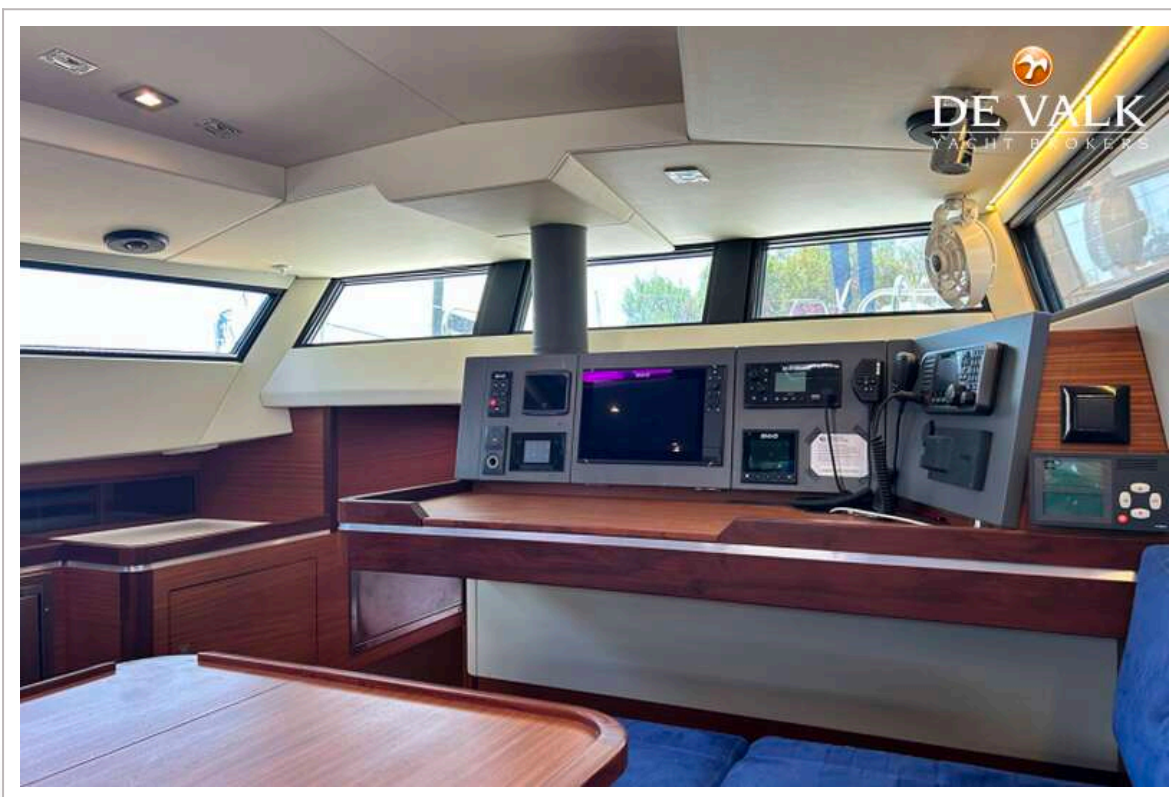


## GARCIA EXPLORATION 45





## GARCIA EXPLORATION 45



## GARCIA EXPLORATION 45

