



DE VALK
YACHT BROKERS



VELDER 63



DE VALK
YACHT BROKERS

BROKER'S COMMENTS

De Velder 63 Custom Built Retro Classic is een uniek aluminium motorjacht met een retro uitstraling, ontworpen voor langeafstandscruises. Met haar CE-categorie A is ze geschikt voor alle weersomstandigheden. Het jacht beschikt over een ruime salon met veel lichtinval, een volledig uitgeruste kombuis en comfortabele slaapvertrekken. De dubbele stuurstand, zowel binnen als buiten, biedt flexibiliteit tijdens het varen. Met hoogwaardige afwerkingen en moderne technologieën is dit jacht een perfecte combinatie van stijl en functionaliteit. Nu te bewonderen in onze verkoophaven in Loosdrecht.

Mark Hesselmans

SPECIFICATIONS

Dimensions	19.00 x 5.05 x 1.35 (m)	Builder	W. Nieuwveld Scheepsbouw BV
Built	2010	Cabins	2
Material	Aluminium	Berths	4
Engine(s)	2 x Deutz BF6M1013EC diesel	Hp/Kw	2 x 234.00 (hp), 172.00 (kw)
Asking price	€ 649.500 (VAT Paid)	Lying	at sales office

CONTACT

Sales office	De Valk Loosdrecht	Telephone	+31 35 582 90 30
Address	't Breukeleveense Meentje 6 1231 LM Loosdrecht / Wijdmeren The Netherlands	E-mail	loosdrecht@devalk.nl

DISCLAIMER

These particulars are given in good faith as supplied but cannot be guaranteed.



GENERAL

Model	VELDER 63
Type	motor yacht
LOA (m)	19,00
Beam (m)	5,05
Draft (m)	1,35
Air draft (m)	4,20
Air draft min (m)	3,50
Year built	2010
Builder	W. Nieuwveld Scheepsbouw BV
Country	The Netherlands
Designer	Wouter Nieuwveld
Displacement (t)	25
Gross tonnage	55
Net tonnage	16
CE norm	A
Hull material	aluminium
Hull colour	Azuur Blue
Hull shape	round-bilged
Superstructure material	aluminium
Rubbing strake	aluminum
Deck material	aluminium
Deck finish	teak
Cockpit deck finish	teak
Dorades	yes
Window frame	aluminium Gebo
Window material	double glazing Gebo
Deckhatch	Gebo
Fuel tank (litre)	5300
Freshwater tank (litre)	2500
Greywater tank (litre)	1000



Wheel steering	hydraulic
Inside helm position	yes
Outside helm position	yes

ACCOMMODATION

Cabins	2
Berths	4
Interior	mahogany
Floor	parquet
Pilot house/deck saloon	yes
Heating	MB Mini Solo
Air-conditioning	60000 BTU
Dinette	yes
Opening door to cockpit	yes
Galley	yes
Countertop	yes
Sink	stainless steel Smeg
Cooker	ceramic Siemens EH 51551
Microwave	Siemens combi HF 17556
Fridge	KU 12L441
Freezer	GU 12L440
Hot water system	MB Solo
Water pressure system	electrical
Dishwasher	SF 65T350
Owners cabin	French bed
Wardrobe	yes
Bathroom	en suite
Toilet	en suite
Toilet system	electric
Wash basin	in the bathroom
Shower	en suite



Guest cabin 1	twin single
Wardrobe	yes
Bathroom	en suite
Toilet	separate
Toilet system	electric
Wash basin	in the bathroom
Extra info	CLD Marine air system
Extra info	Webasto cabin blower control

MACHINERY

No of engines	2
Make	Deutz
Type	BF6M1013EC
HP	234
kW	172
Fuel	diesel
Year installed	2010
Maximum speed (kn)	10
Engine hours	Ca 200
Engine cooling system	freshwater heat exchanger
Drive	shaft
Engine controls	2x Navio 262
Gearbox	hydraulic
Bowthruster	hydraulic Hydrosta 35 HP
Propeller type	fixed
Propeller blades	4
Propeller shaft material	stainless steel
Generator	Kohler 17EFOZD 16KW
Batteries	yes
Start battery	4x
Service battery	12x 2V 440Ah VRLA



Battery charger	2x Mastervolt Mass 24/100 (New in 2024)
Inverter	Mastervolt Mass sine 24/5000 (New in 2024)
Shorepower	with cable
Trimtabs	yes

NAVIGATION

Electric compass	yes
Depth sounder	Furuno
VHF	Sailor RT 5022
Autopilot	Hydrosta
Radar	Furuno RCU-01
GPS	yes
Navtex	Navtex NX300
Extra info	Internet CEL24 WIFI
Extra info	3x Navio 315, 1x Navio 301, 2x Navio 202

EQUIPMENT

Fixed windscreen	Gebo
Cockpit cover	yes
Bimini	On front and aftdeck
Sun awning	On aft deck
Bathing platform	yes
Boarding ladder	yes
Anchor	yes
Anchor chain	13 mm
Windlass	hydraulic Lofrans Titan B
Deck crane	hydraulic Fassi M20AFM13, swl 2,1 ton, not connected
Sea railing	teak
Wiper	yes
TV receiver	yes
Extinguisher in engine room	FirePro Aërosol



Extra info

Water connection in anchor locker

Extra info

Navio 754



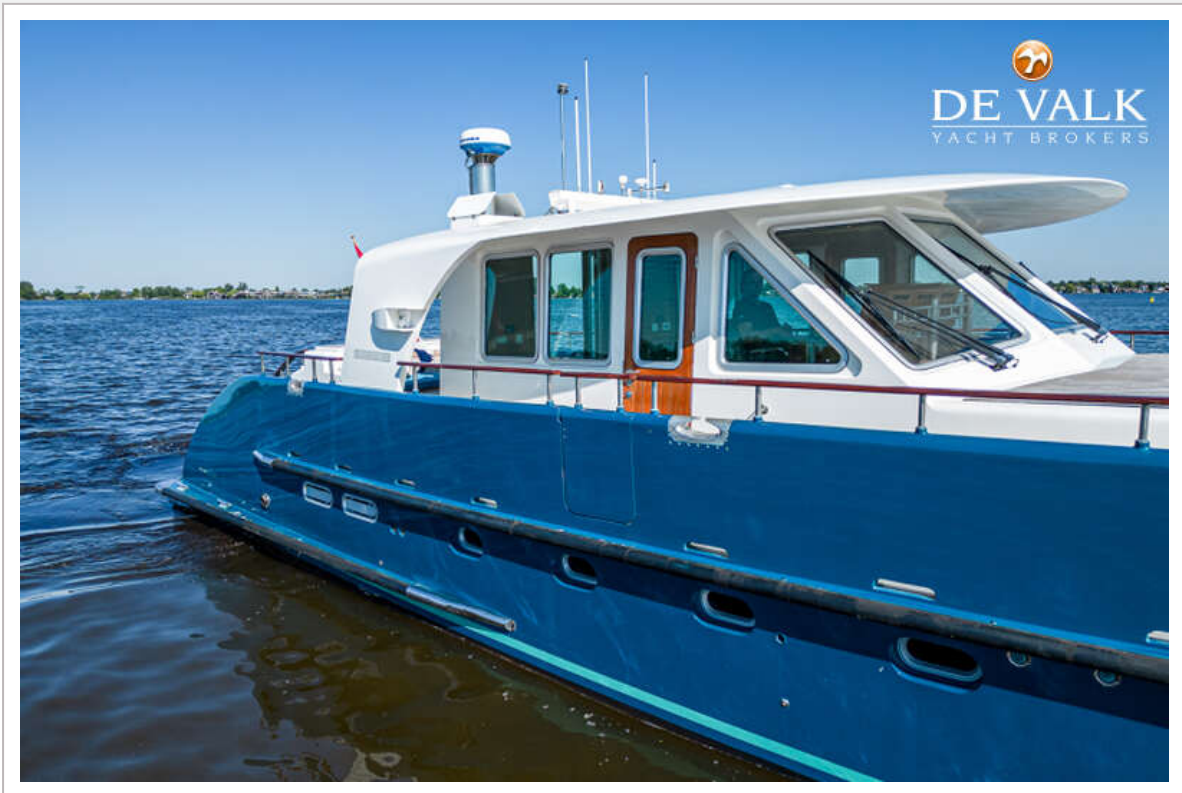
VELDER 63



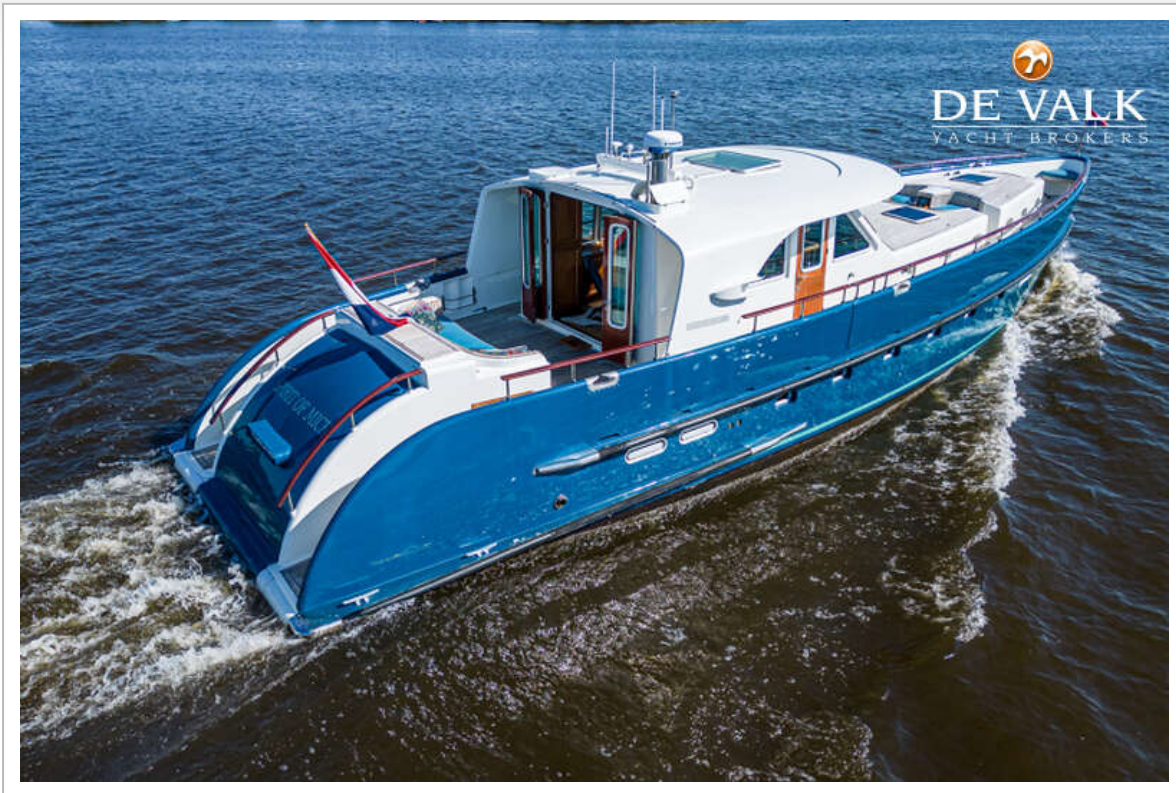
VELDER 63



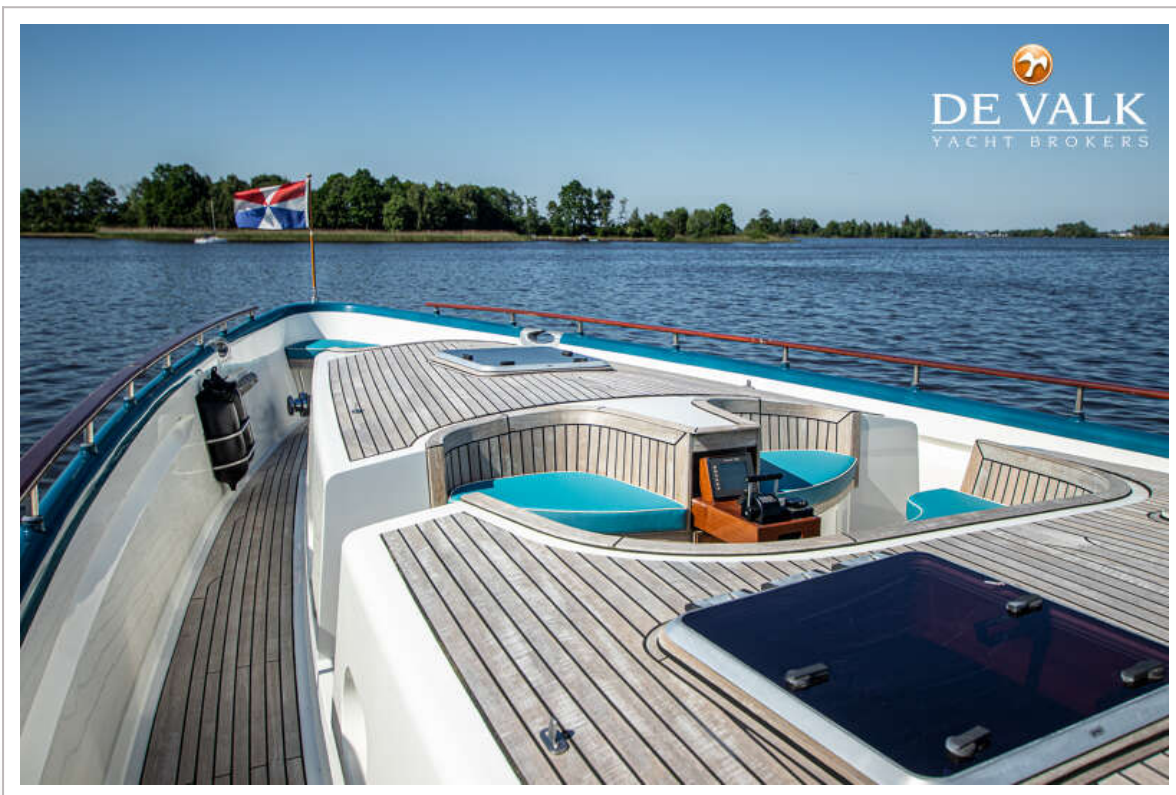
VELDER 63



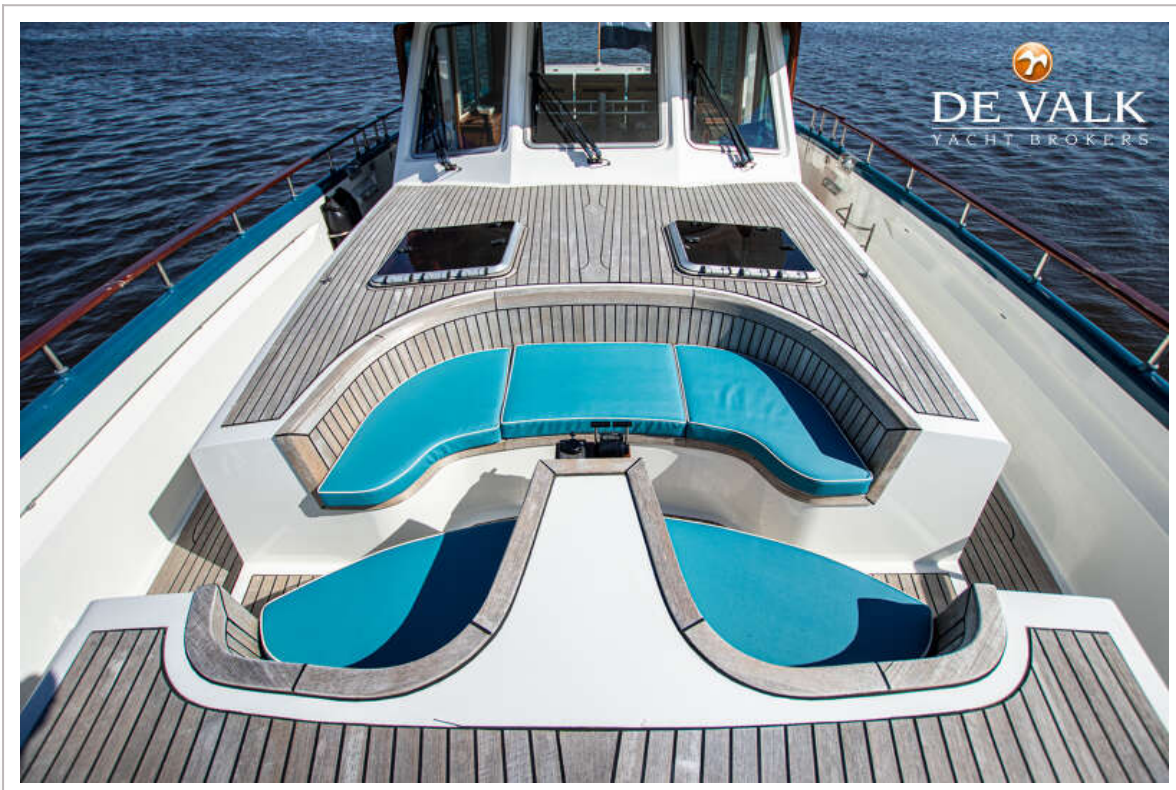
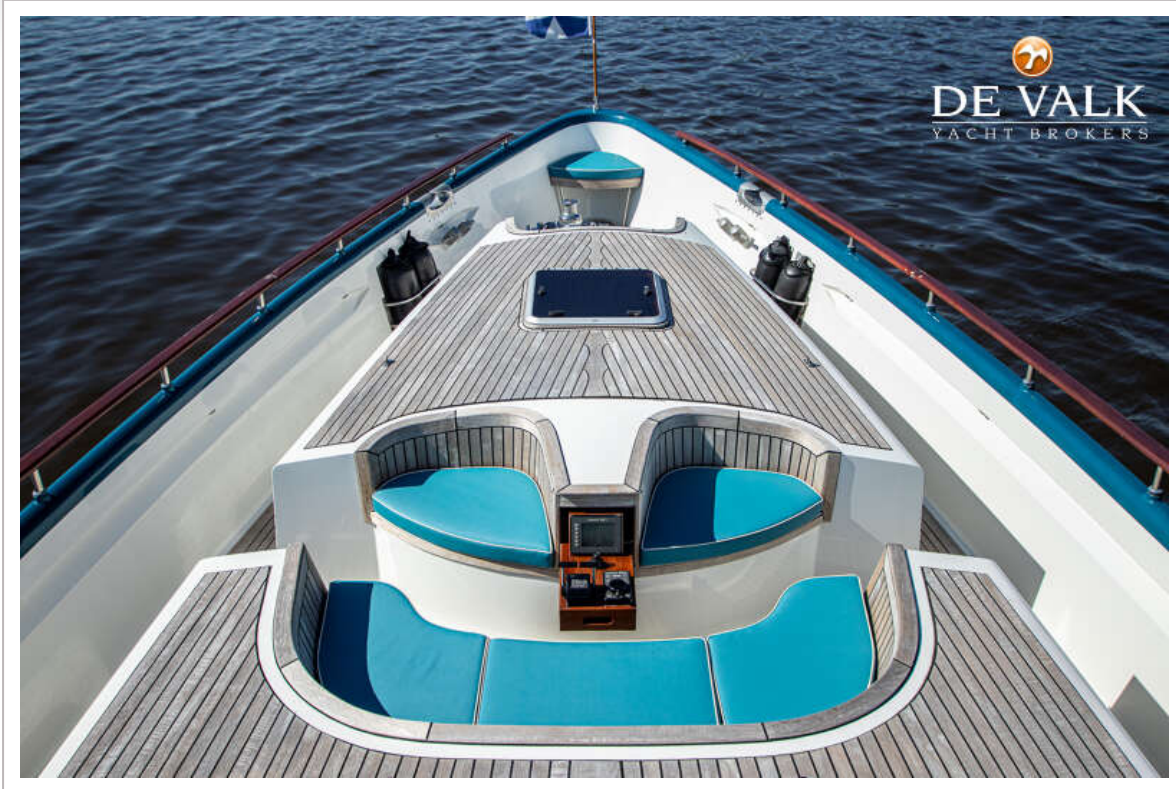
VELDER 63



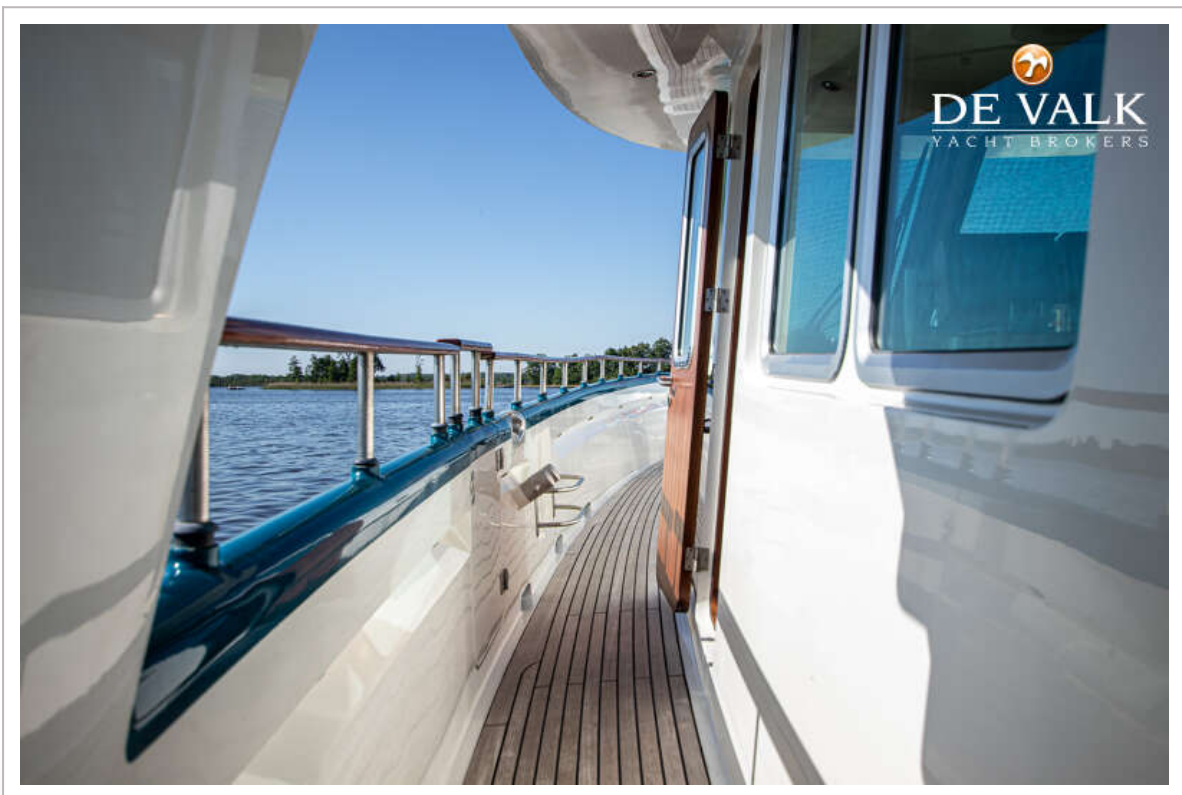
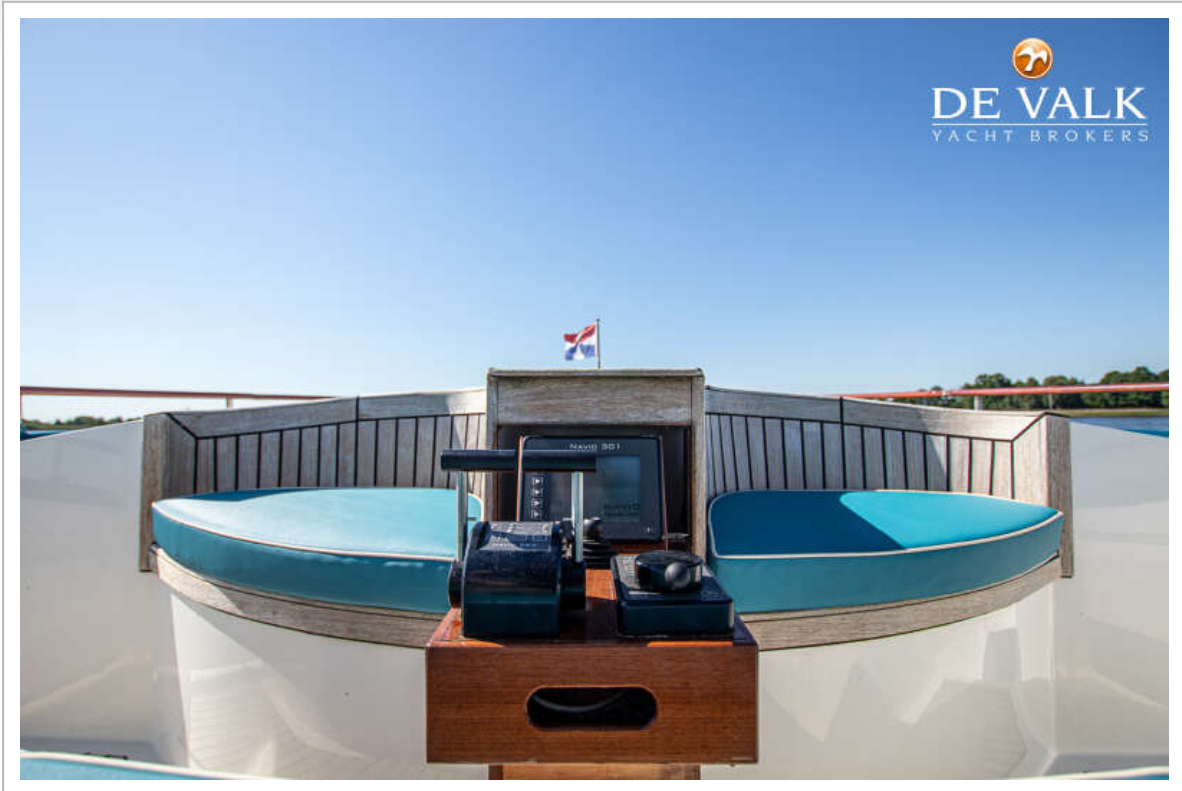
VELDER 63



VELDER 63









VELDER 63



VELDER 63

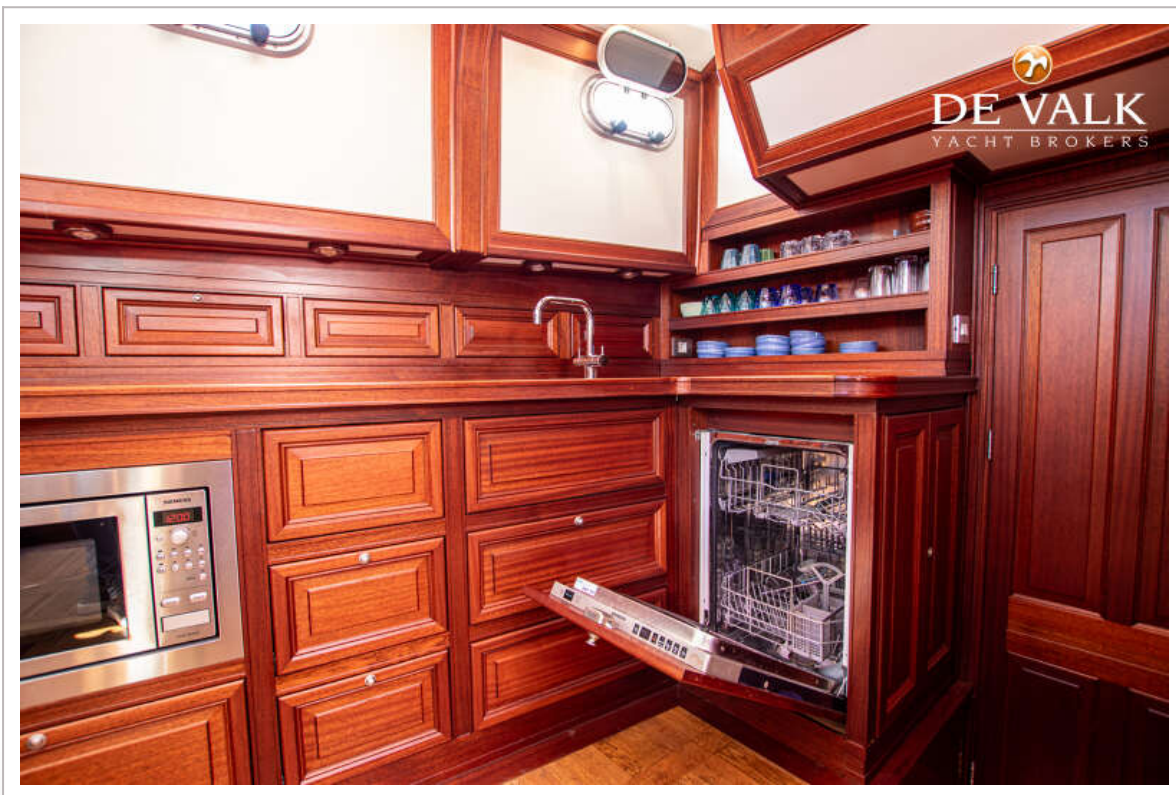
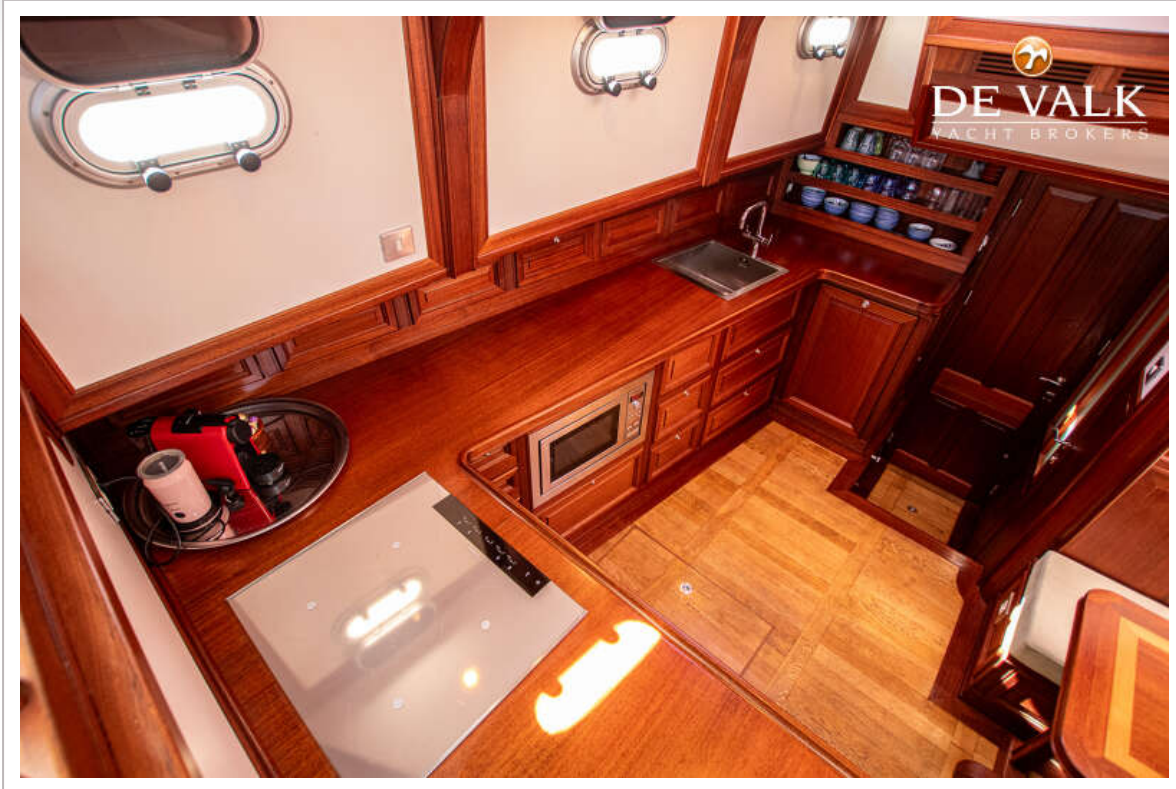


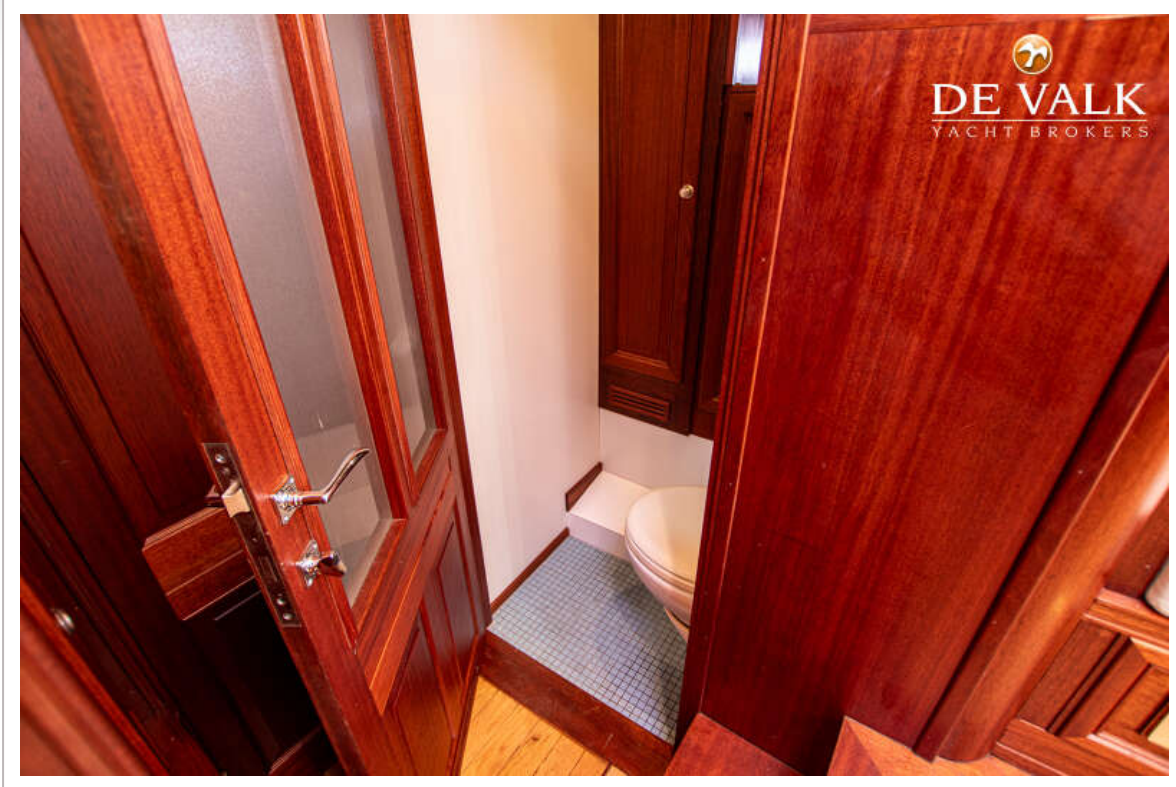
VELDER 63



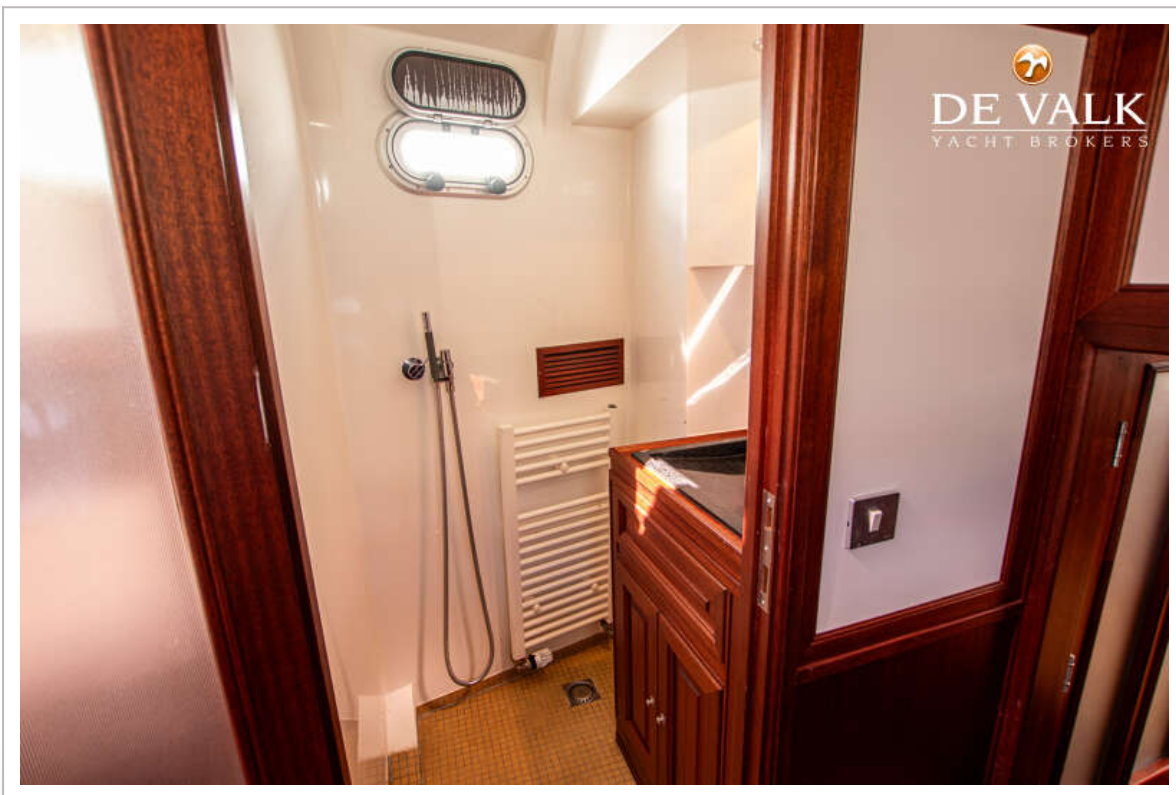
VELDER 63



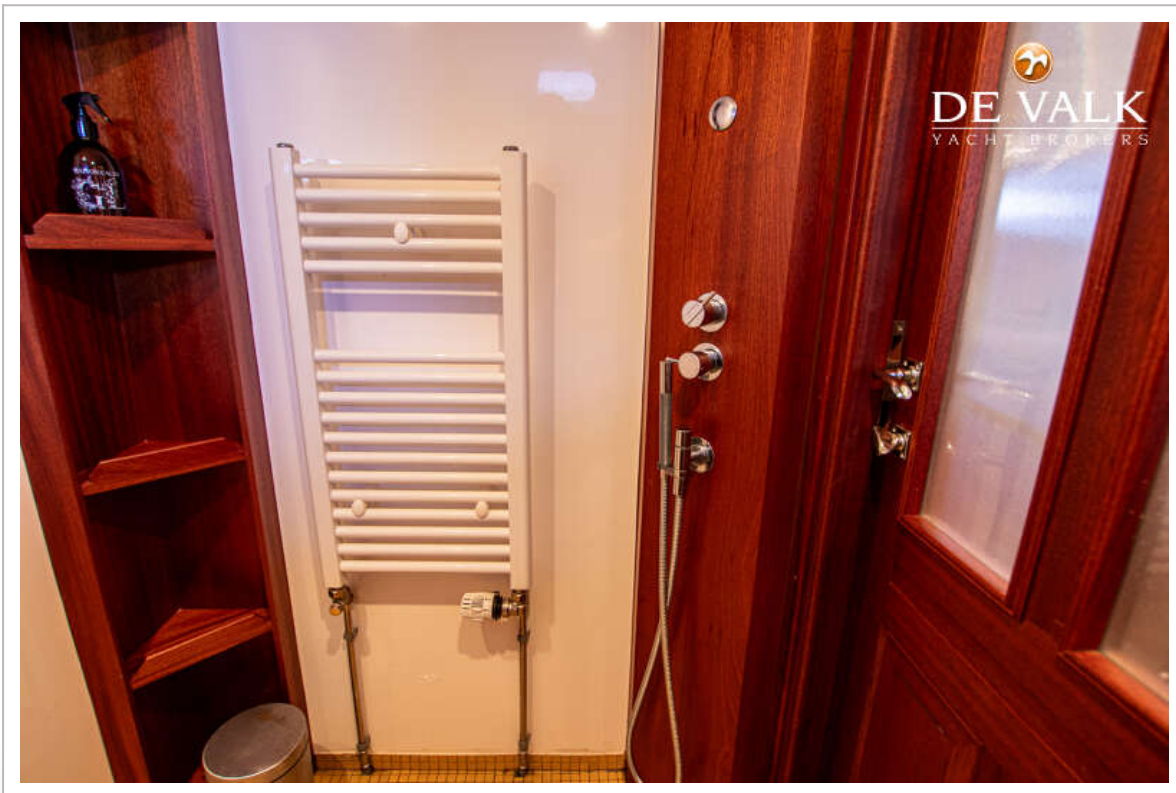
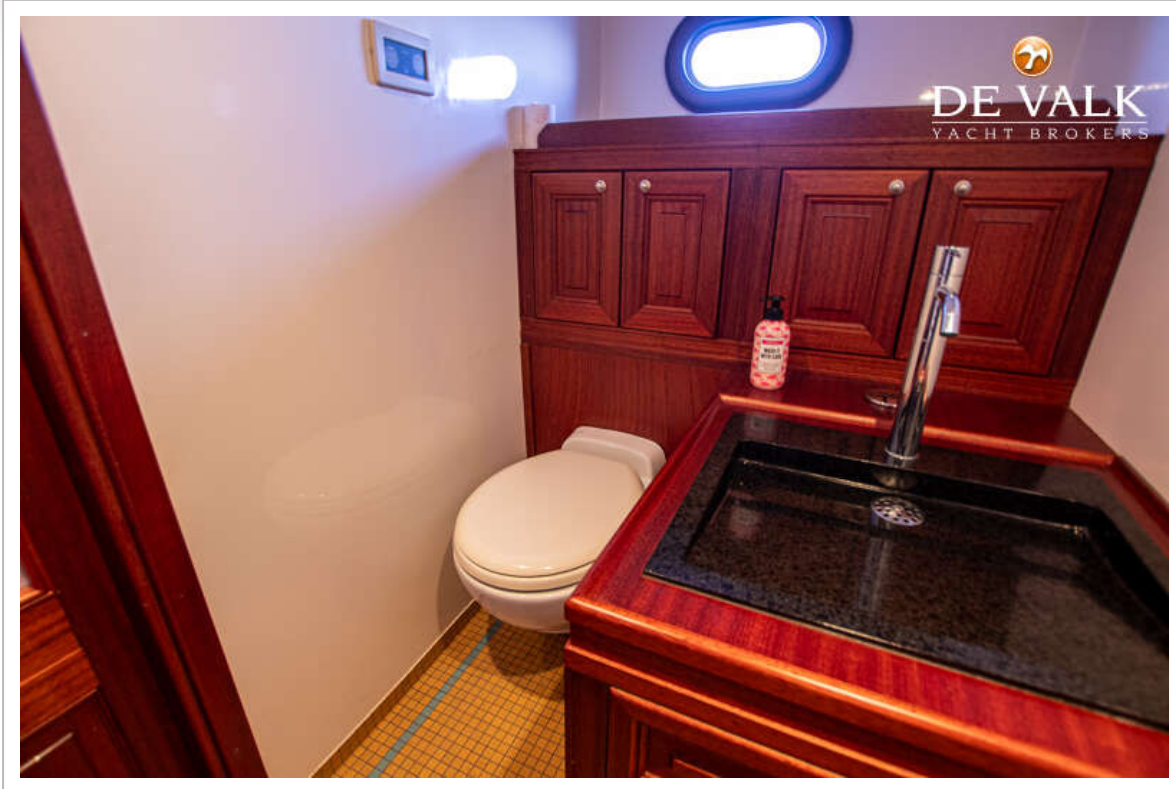


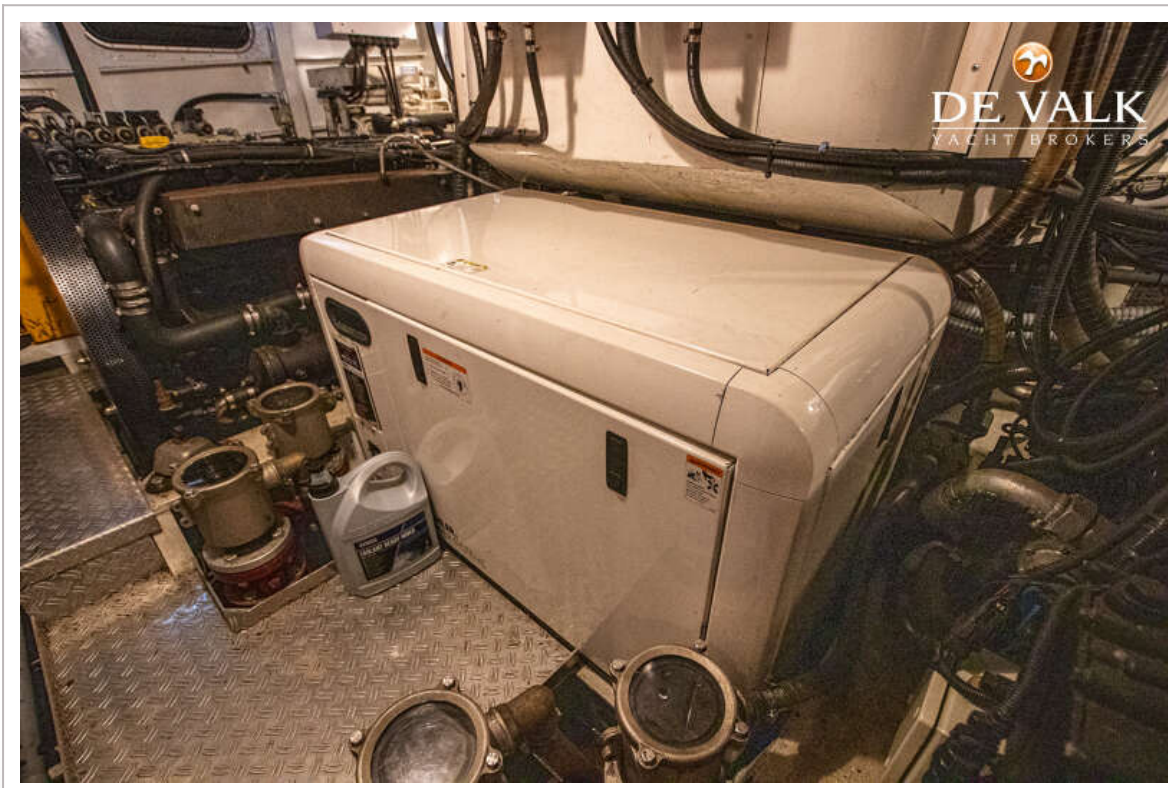


VELDER 63









VELDER 63



VELDER 63

