



DE VALK
YACHT BROKERS



KLAASSEN KOTTER



DE VALK
YACHT BROKERS

BROKER'S COMMENTS

This elegant, timeless and stylish Super van Craft/ Klaassen Kotter has everything you could possibly need for extended cruising and a longer stay on board. With her twin Daf diesels and bowthruster en Sternthruster, "Brandaris" is very easy to handle. Serious comfort levels are found throughout the interior, two cabin layout and two bathrooms. her aftdeck could be a large entertaining area, a great time is assured for everyone on board. This Klaassen Kotter is well maintained. Ready for inspection in our salesmarina in Sneek.

Pieter Bosma

SPECIFICATIONS

Dimensions	14.10 x 4.10 x 1.40 (m)	Builder	Klaassen - Voorschoten
Built	1981	Cabins	2
Material	Steel	Berths	6
Engine(s)	2 x DAF 615 diesel	Hp/Kw	2 x 105.00 (hp), 77.28 (kw)
Asking price	€ 129.000 (VAT Paid)	Lying	at sales office

CONTACT

Sales office	De Valk Sneek	Telephone	+31 (0)515 42 80 30
Address	Zwolsmanweg 7 8606 KC Sneek NL	E-mail	sneek@devalk.nl

DISCLAIMER

These particulars are given in good faith as supplied but cannot be guaranteed.



GENERAL

Model	KLAASSEN KOTTER
Type	motor yacht
LOA (m)	14,10
Beam (m)	4,10
Draft (m)	1,40
Air draft (m)	2,60
Headroom (m)	1,90
Year built	1981
Builder	Klaassen - Voorschoten
Country	The Netherlands
Designer	B. Klaassen
Displacement (t)	29
CE norm	NA
Hull material	steel
Hull colour	blue
Hull shape	S-bilged
Keel type	long keel
Superstructure material	teak Galley and front cabin have a Steel super structure
Rubbing strake	stainless steel
Deck material	steel
Deck finish	teak
Superstructure deck finish	paint
Dorades	with solar ventilators Marinco
Window frame	copper chromed
Window material	glass
Deckhatch	large hatch in salon
Portholes	yes
Mast can be lowered	electric Front mast manual aft mast electric with DV6000 winch
Fuel tank (litre)	1200 Ltr
Freshwater tank (litre)	900 Ltr



Level indicator (freshwater)	yes
Level indicator (blackwater)	2x Wema
Blackwater tank extraction	deck extraction + pump
Wheel steering	powersteer Electric hydraulic
Inside helm position	disconnected
Outside helm position	yes
More info on hull	Beautiful lined cutter yacht with canoe stern. Large aftdeck with comfortable settee, spacious sidedecks easy acces to front deck.
More info on paintwork	hull and varnisch has been repainted in 2023
Extra info	2 front windows one side window and the aft window in the salon and all portholes can be opened

ACCOMMODATION

Cabins	2
Berths	6
Interior	mahogany
Layout	from front to aft: forecabin with two seperate bunks, good stoage space and a on suite bathroom with toilet and washbasin, a galley with lots of storage and a dinette, salon with inside steering position, L bunk and lots of storage, aftcabin with two seperate berths large storgae space and an on suite batroom with toilet shower and washbasin (and the door that gives acces to the engine room).
Floor	carpet
Aft deck	with ouside steering position and a comfy settee
Saloon	yes
Headroom saloon (m)	1.89 m
Sliding roof	manual
Heating	central heating Kabola HR400 2010
Heating 2	diesel ducted hot air Eberspacher D7L
Aft Cabin	yes
Dinette	yes



KLAASSEN KOTTER

Opening door to aft deck	yes
Galley	yes
Countertop	plastic Wood looks
Sink	stainless steel
Cooker	calor gas 4 burner Seppelfricke stove
Microwave	Sharp
Fridge	Isotherm
Hot water system	on central heating
Water pressure system	electrical
Coffee maker	Nespresso
Owners cabin	twin single
Wardrobe	hanging/drawers/shelves
Bathroom	en suite
Toilet	en suite
Toilet system	electric
Wash basin	in the bathroom
Shower	en suite
Guest cabin 1	twin single
Wardrobe	hanging/drawers/shelves
Bathroom	en suite
Toilet	en suite
Toilet system	electric
Wash basin	in the bathroom

MACHINERY

No of engines	2
Make	DAF
Type	615
HP	105
kW	77.28
Fuel	diesel



Maximum speed (kn)	8
Cruising speed (kn)	6
Engine hours	4230
Engine cooling system	closed keelcooling
Drive	shaft
Shaft seal	yes
Engine controls	bowden cable Morse
Gearbox	hydraulic Velvet
Bowthruster	electric Maxpower 2010
Sternthruster	electric Maxpower 2010
Exhaust	dry
Propeller type	fixed
Propeller shaft material	steel
Shaft lubrication	grease
Electric bilge pump	yes
Bilge alarm	yes
Electrical installation	24/220V
Generator	wet exhaust Mastervolt Whisper Gen 6 Ultra
Running hours generator	25 hours
Batteries	yes
Start battery	2x SMF 108 Ah
Service battery	4x 230 Ah
Bowthruster battery	4x Red top
Sternthruster battery	4x Red top
Battery monitor	Mastervolt
Inverter	Victron Phoenix 24V/750W
Battery charger/inverter	Mastervolt Mass Combi 24/2500/60
Diode battery combiners	Victron Argofet
Shorepower	with cable Mastervolt Mass System switch
Insulation transformer	Mastervolt Mass GI3.5
Extra info	Separ fuel filter for every engine



NAVIGATION

Compass	Sestrel Moore
Electric compass	in the autopilot Raymarine EV1 coors computer
Multi control display	Raymarine
Depth sounder	Raymarine DSt in multiscreen and plotter
Log	Raymarine DST in Multiscreen and on plotter
Windset	Raymarine 508 windsensor in the multiscreen and plotter
VHF	Shipmate RS8315
Autopilot	with Raymarine S100 remote control Raymarine
Rudder angle indicator	Raymarine in pilot/multi and plotter screen
Radar	Raymarine Quantum Q24C radar
GPS	In the Raymarine multiscreen
Radar/GPS/plotter	Touch screen Raymarine ES serie
Wifi antenna	4G router and outside internet antenna 2018
AIS transponder	Raymarine
Navigation lights	with sb and ps lite, top end steaming light, horn light and flasch light
Searchlight	DHR

EQUIPMENT

Fixed windscreen	yes
Sprayhood	bleu
Bimini	white
Cockpit cushions	yes
Cockpit chairs	yes
Gangway	Teak
Anchor	Pool
Anchor chain	yes
Anchor 2	Pool Aft
Windlass	electrical Lofrans Falcon winch 2023
Windlass aft	manual Vetus



Davits	1x
Davits controls	manual
Sea railing	wire Around aftdeck with beautiful teak caprail
Grab rail (superstructure)	yes
Railing side opening gates	yes
Lifebuoy	yes
Wiper	3x
Clearview window	Kent
Window ventilator	yes
Horn	air pressure
Fenders	yes
Mooring lines	yes
TV	Sony
Radio	Fusion MSA70N
Speakers in salon	yes
Clock - barometer	yes
Extra info	Buienrader weather station



KLAASSEN KOTTER





KLAASSEN KOTTER



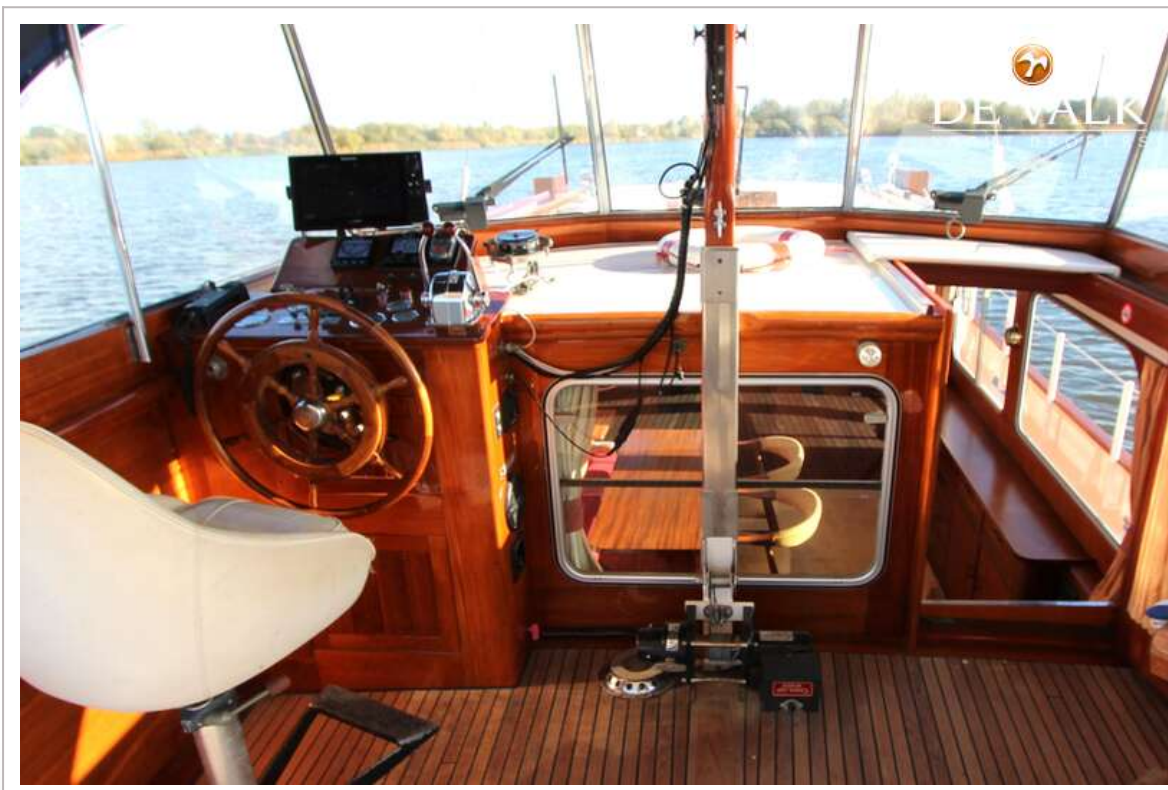
KLAASSEN KOTTER



KLAASSEN KOTTER



KLAASSEN KOTTER



KLAASSEN KOTTER

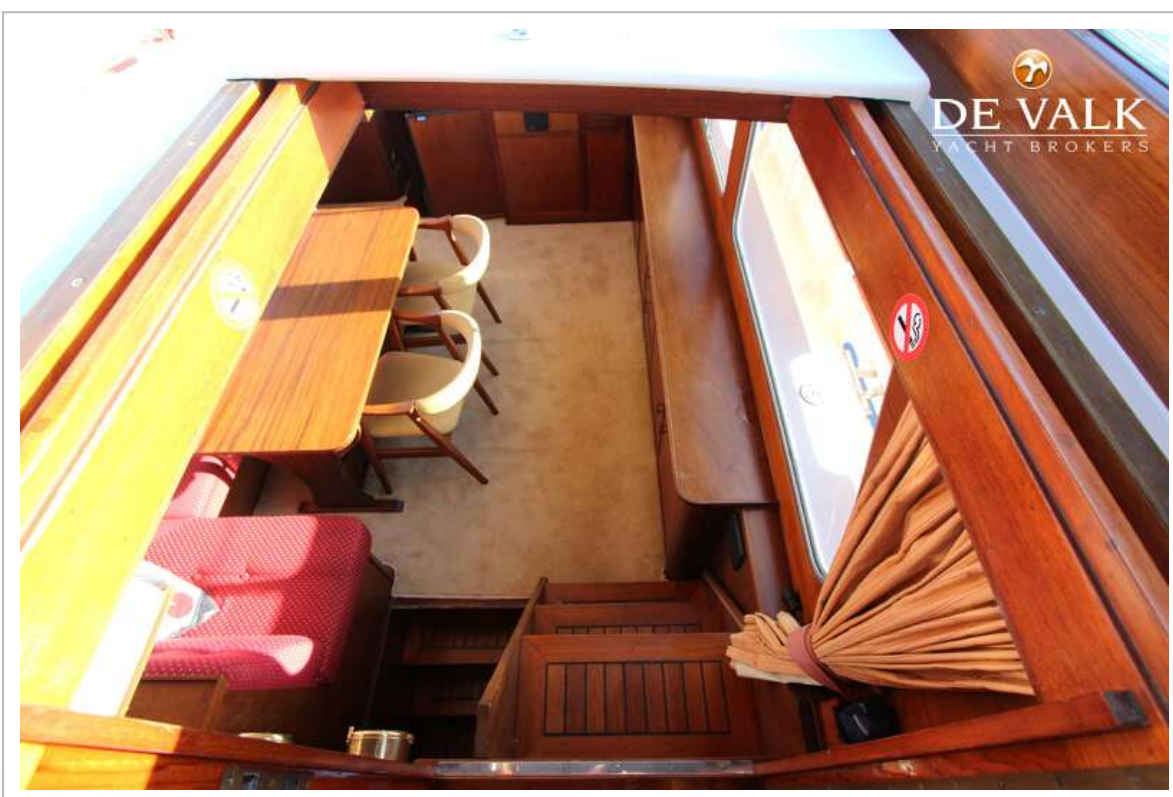
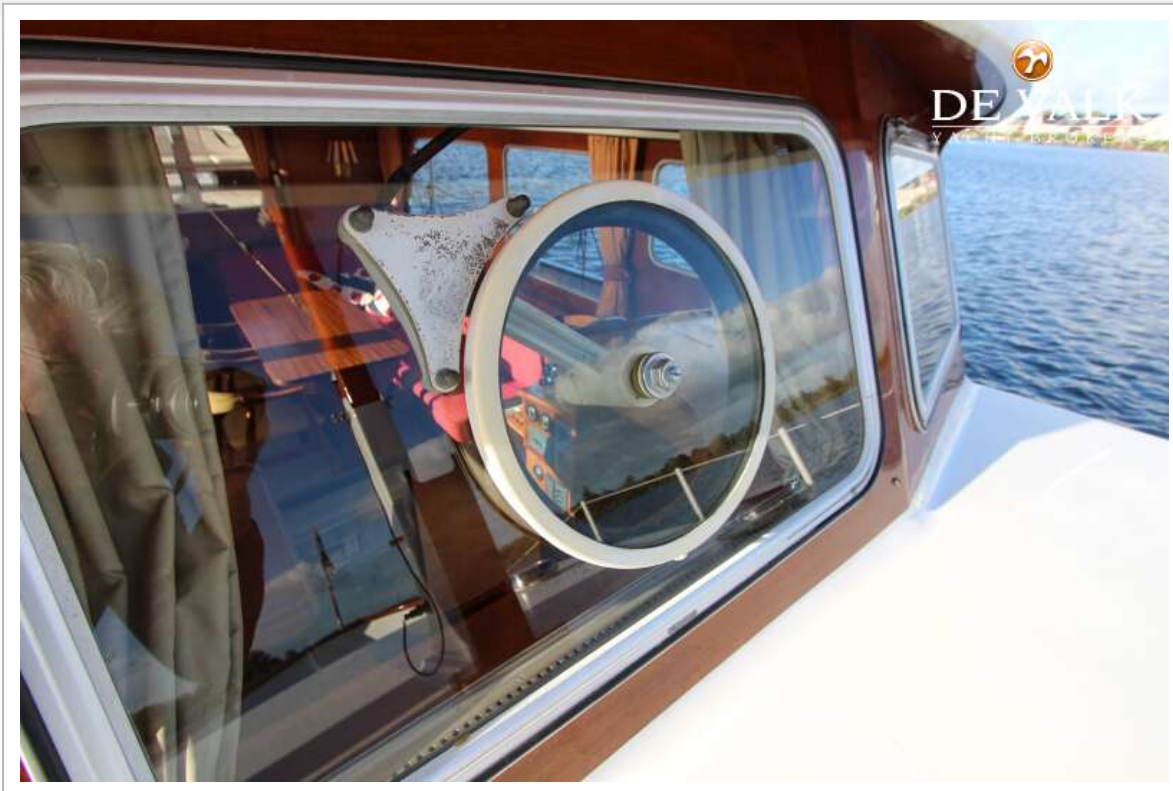




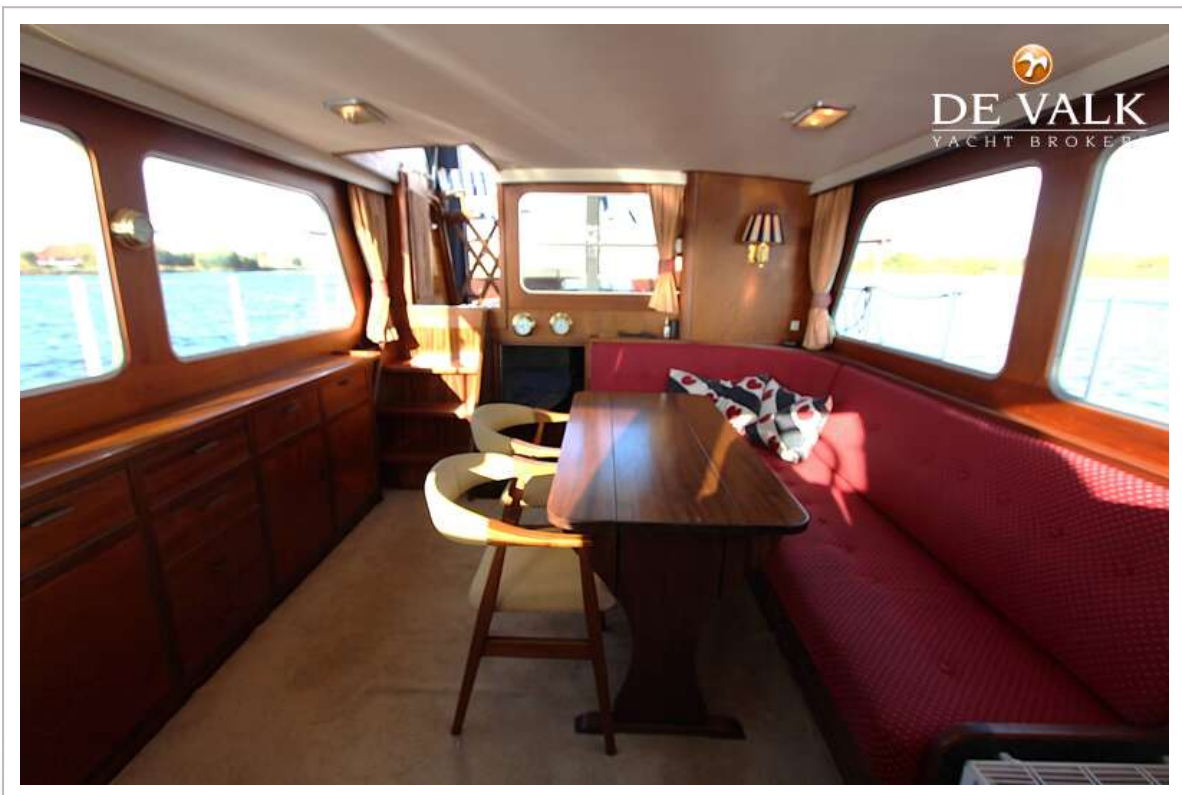
KLAASSEN KOTTER



KLAASSEN KOTTER



KLAASSEN KOTTER



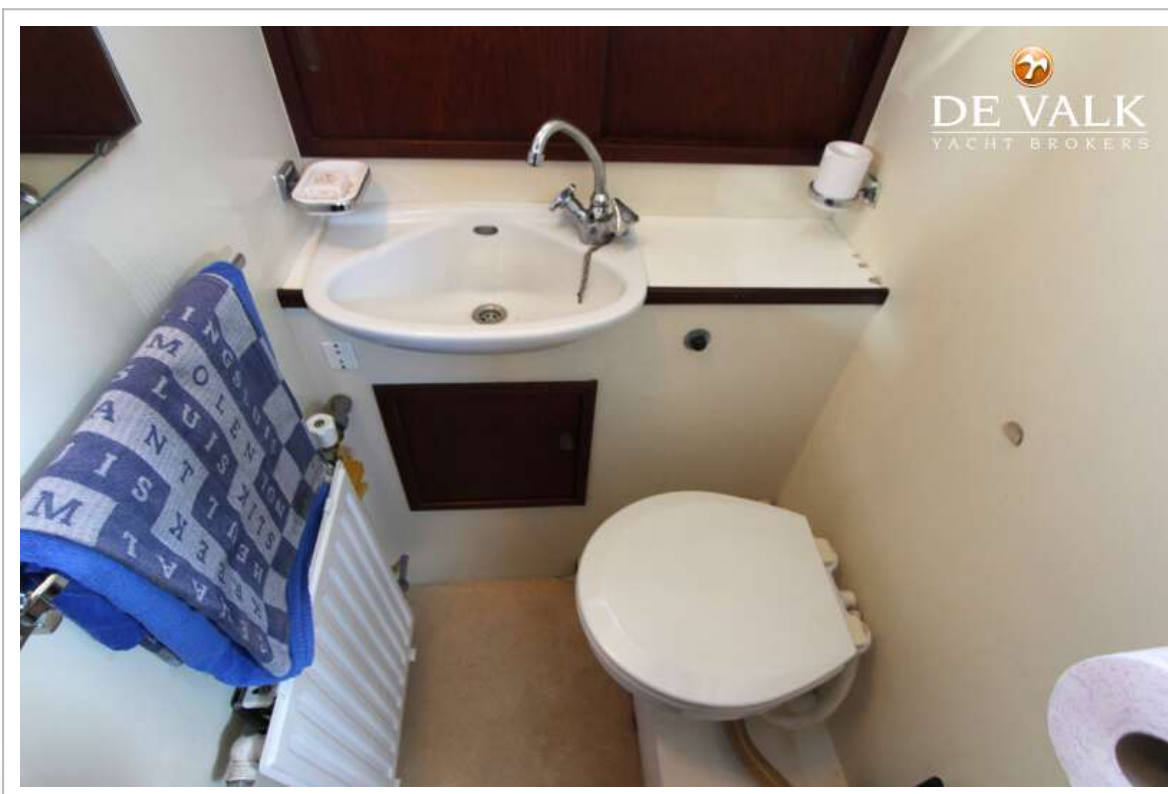
KLAASSEN KOTTER



KLAASSEN KOTTER



KLAASSEN KOTTER







KLAASSEN KOTTER

