



DE VALK  
YACHT BROKERS



## NAUTICAT 38



DE VALK  
YACHT BROKERS

# NAUTICAT 38

## BROKER'S COMMENTS

NAUTICAT 38 is a ketch designed by the Finish Naval Architect Aarnipalo and built by Siltala Yachts in Finland. The yacht has been fully refitted recently and she is excellent for both sailing and living aboard.

*Sofia Iliia-Salvanou*

## SPECIFICATIONS

<b>Dimensions</b>	11.50 x 3.40 x 1.80 (m)	<b>Builder</b>	SILTALA YACHTS
<b>Built</b>	1979	<b>Cabins</b>	2
<b>Material</b>	GRP	<b>Berths</b>	6
<b>Engine(s)</b>	1 x FORD LEHMAN 2712E 4 Cylinde diesel	<b>Hp/Kw</b>	80.00 (hp), 58.88 (kw)
<b>Asking price</b>	€ 130.000 (VAT Exempt)	<b>Lying</b>	elsewhere / Not at sales office

## CONTACT

<b>Sales office</b>	De Valk Corfu	<b>Telephone</b>	(+30) 6948681503
<b>Address</b>	New Port of Corfu, near Gouvia Marina 490 83 Corfu GR	<b>E-mail</b>	corfu@devalk.nl

## DISCLAIMER

These particulars are given in good faith as supplied but cannot be guaranteed.



## GENERAL

<b>Model</b>	NAUSICAT 38
<b>Type</b>	motorsailer
<b>LOA (m)</b>	11,50
<b>Beam (m)</b>	3,40
<b>Draft (m)</b>	1,80
<b>Year built</b>	1979
<b>Builder</b>	SILTALA YACHTS
<b>Country</b>	Finland
<b>Displacement (t)</b>	13
<b>Hull material</b>	GRP
<b>Hull colour</b>	off-white Repainted in 2024
<b>Keel type</b>	long keel
<b>Deck material</b>	GRP
<b>Deck finish</b>	teak
<b>Cockpit deck finish</b>	teak
<b>Window material</b>	glass
<b>Portholes</b>	yes
<b>Fuel tank (litre)</b>	stainless steel 600
<b>Freshwater tank (litre)</b>	stainless steel 450
<b>Wheel steering</b>	hydraulic Dual
<b>Emergency tiller</b>	yes
<b>More info on hull</b>	Painted in 2024
<b>Extra info</b>	Borg Warner hydraulic transmission
<b>Extra info</b>	Total yacht refit in 2024
<b>Extra info</b>	Semi long integral keel. Skeg hung rudder.

## ACCOMMODATION

<b>Cabins</b>	2
<b>Berths</b>	6
<b>Floor</b>	carpet New carpets, teak & Holly flooring



Saloon	New upholstery
Heating	Eberspaecher NEW
Air-conditioning	X 2
Navigation center	yes
Dinette	yes
Galley	yes
Countertop	yes
Sink	stainless steel
Cooker	calor gas LPG Spinflo with two burners
Oven	And grill
Microwave	yes
Fridge	12V Top opening
Hot water system	yes
Water pressure system	yes
Crockery	yes
Owners cabin	double bed New covers on mattresses
Wardrobe	yes
Bathroom	yes
Toilet	New VETUS
Toilet system	electric
Wash basin	yes
Shower	yes
Guest cabin 1	v-bed Double
Wardrobe	yes
Bathroom	yes
Toilet	New VETUS
Toilet system	electric
Wash basin	yes
Shower	yes

## MACHINERY



<b>No of engines</b>	1
<b>Make</b>	FORD LEHMAN
<b>Type</b>	2712E 4 Cylinde
<b>HP</b>	80
<b>kW</b>	58.88
<b>Fuel</b>	diesel
<b>Year of overhaul</b>	2024
<b>Maximum speed (kn)</b>	9
<b>Cruising speed (kn)</b>	7
<b>Consumption (l/hr)</b>	4
<b>Range (nm)</b>	600
<b>Drive</b>	shaft
<b>Shaft seal</b>	yes
<b>Bowthruster</b>	2024 VETUS 95 KGF 185 mm
<b>Sternthruster</b>	2024 VETUS
<b>Propeller type</b>	fixed
<b>Propeller blades</b>	3
<b>Shaft lubrication</b>	water
<b>Manual bilge pump</b>	yes
<b>Electric bilge pump</b>	yes
<b>Electrical installation</b>	yes
<b>Generator</b>	WESTERBEKE, 3 cyl 7,5 KVA overhauled in 2024
<b>Batteries</b>	yes
<b>Start battery</b>	X 1
<b>Service battery</b>	1 x 12 v AMG
<b>Generator battery</b>	X 1
<b>Bowthruster battery</b>	X1
<b>Sternthruster battery</b>	X1
<b>Battery monitor</b>	yes
<b>Battery charger</b>	yes
<b>Solar panel</b>	yes
<b>Shorepower</b>	With RCD consumer unit



## NAVIGATION

Compass	Sunnato D-110
Depth sounder/log	RAYMARINE
Log	yes
Windset	RAYMARINE
Fish finder	GARMIN
VHF	RAY-50 RAYMARINE
Autopilot	NECO 2019
Rudder angle indicator	In Wheelhouse
Plotter	RAYMARINE e7 HYBRID TOUCH GPS CHART PLOTTER E 62354
Plotter/GPS	RAYMARINE AXIOM 9 PRO HYBRID NEW 2020
AIS receiver	AIS 350
EPIRB	yes

## EQUIPMENT

Bimini	Retractable new
Sun awning	& Boom tent & cockpit tent & overal cover for winter
Cockpit cushions	Waterproof covers
Bathing platform	Stainless steel and teak
Boarding ladder	yes
Anchor	CQR Plough 60 Lb
Anchor chain	100 m stainless steel
Anchor 2	Delta At the stern with electric windlass
Anchor chain	60 m stainless steel
Windlass	electrical X 2 LOFRANSS
Windlass aft	yes
Dinghy	2,40 m
Outboard	TOHATSU 3,5 Hp 4 stroke
Davits	Stainless steel removable
Sea railing	yes



<b>Grab rail (superstructure)</b>	Stainless steel & teak on foredecks
<b>Pushpit</b>	Stainless steel
<b>Pulpit</b>	Stainless steel
<b>Lifejackets</b>	X8 plus 2 self inflating
<b>Lifebuoy</b>	Warp 100 m of 18 mm
<b>Horn</b>	yes
<b>Fenders</b>	X 8
<b>Spare parts</b>	yes
<b>Clock - barometer</b>	yes
<b>Fire extinguisher</b>	yes
<b>Extra info</b>	GAS Detector
<b>Extra info</b>	DEHUMIDIFIER 240 V

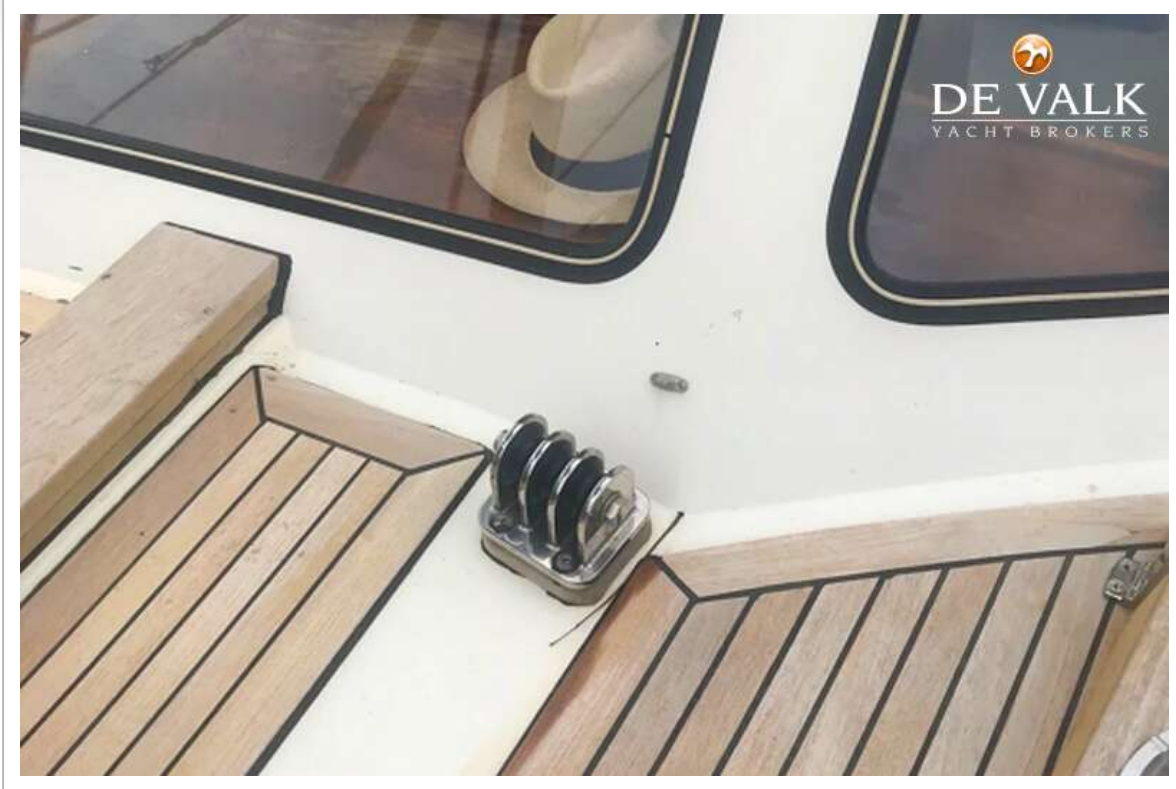
## RIGGING

<b>Rigging</b>	ketch
<b>Material mast</b>	aluminium
<b>Mainsail</b>	18 years-Doyle, slab reefing with lazylines
<b>Mizzen</b>	18 years-Doyle
<b>Mizzen staysail</b>	yes
<b>Genoa</b>	18 years-Doyle
<b>Staysail</b>	yes
<b>Yankee</b>	18 years-Doyle
<b>Stormjib</b>	18 years-Doyle
<b>Reefing System</b>	slabreefing
<b>Halyard winches</b>	yes

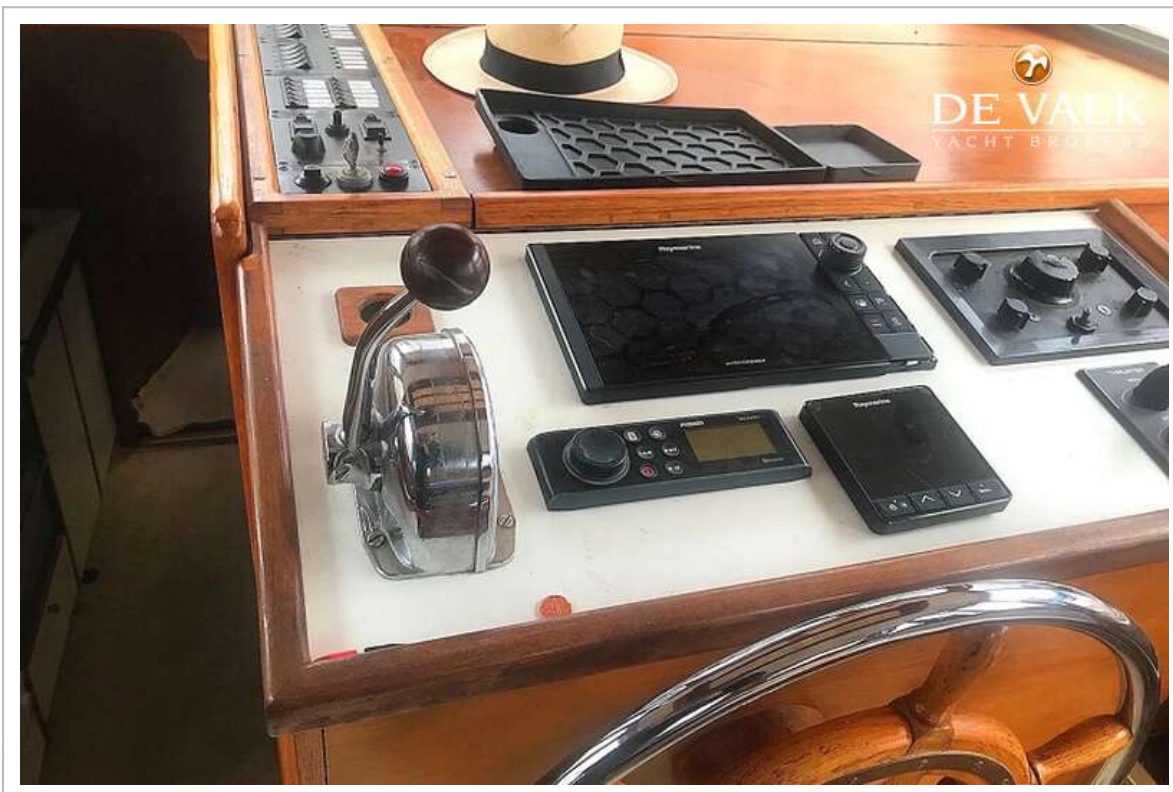
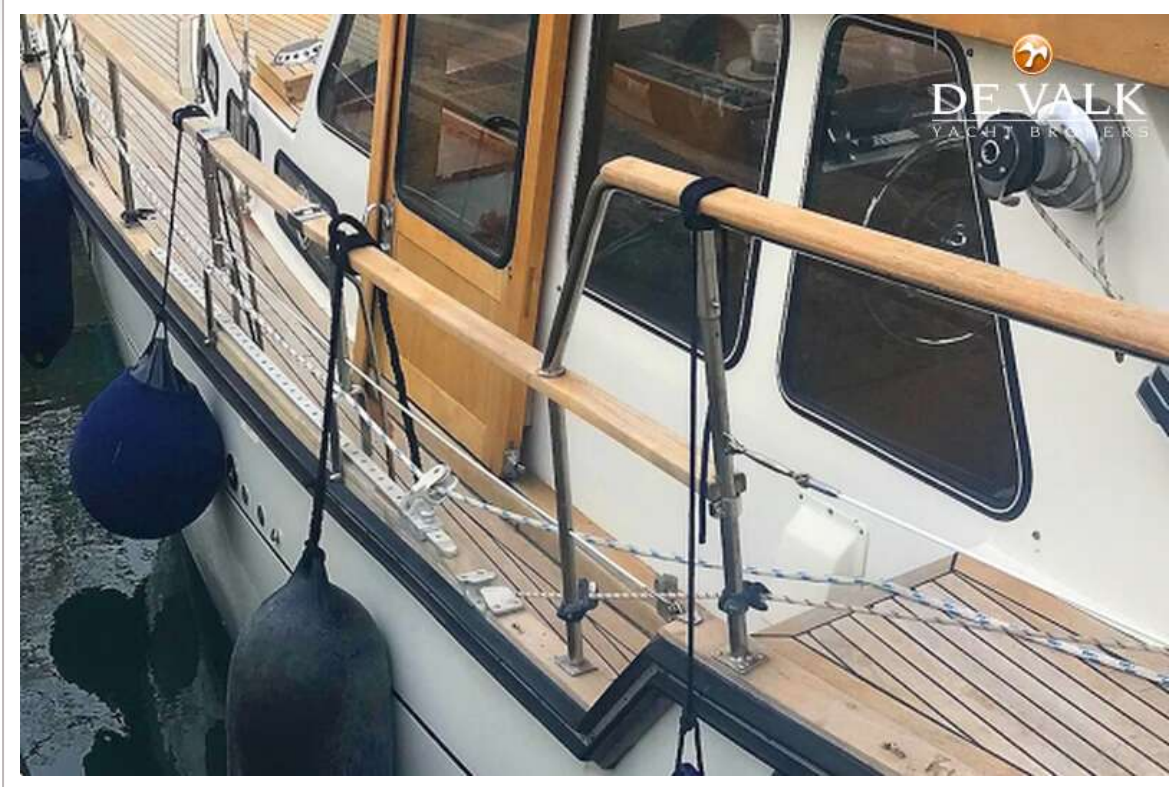






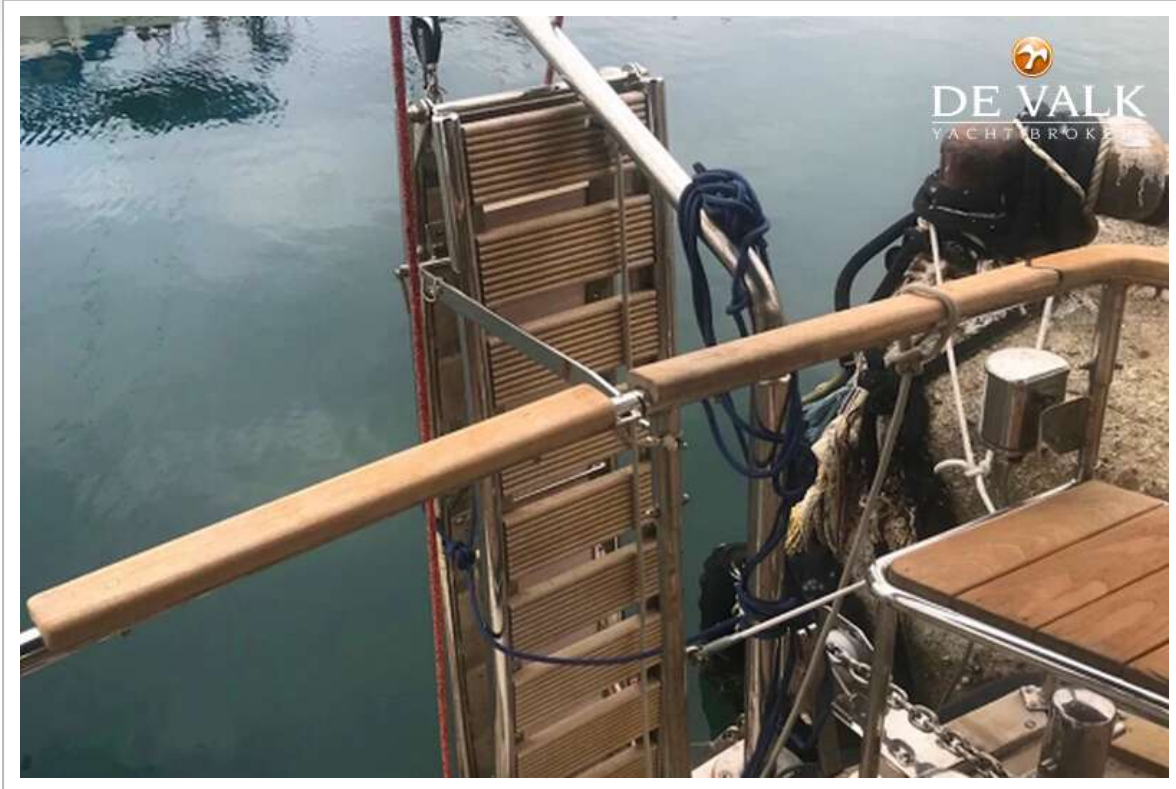


# NAUTICAT 38

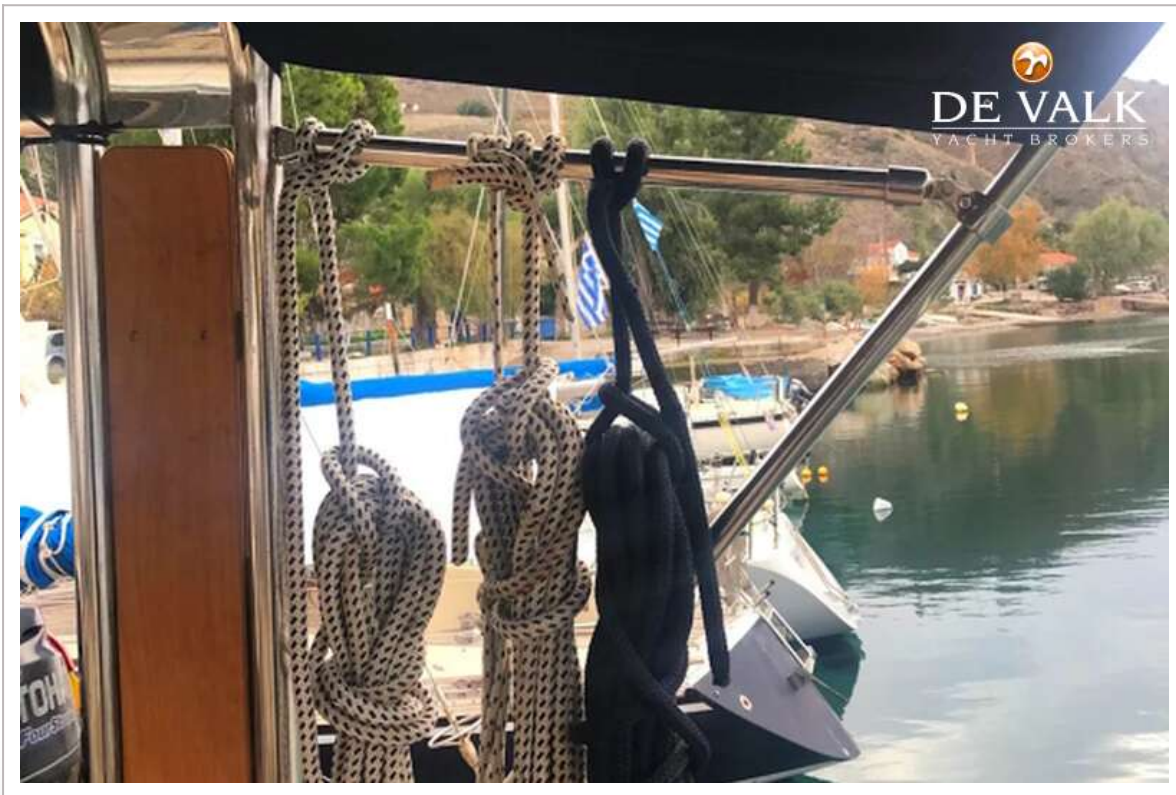
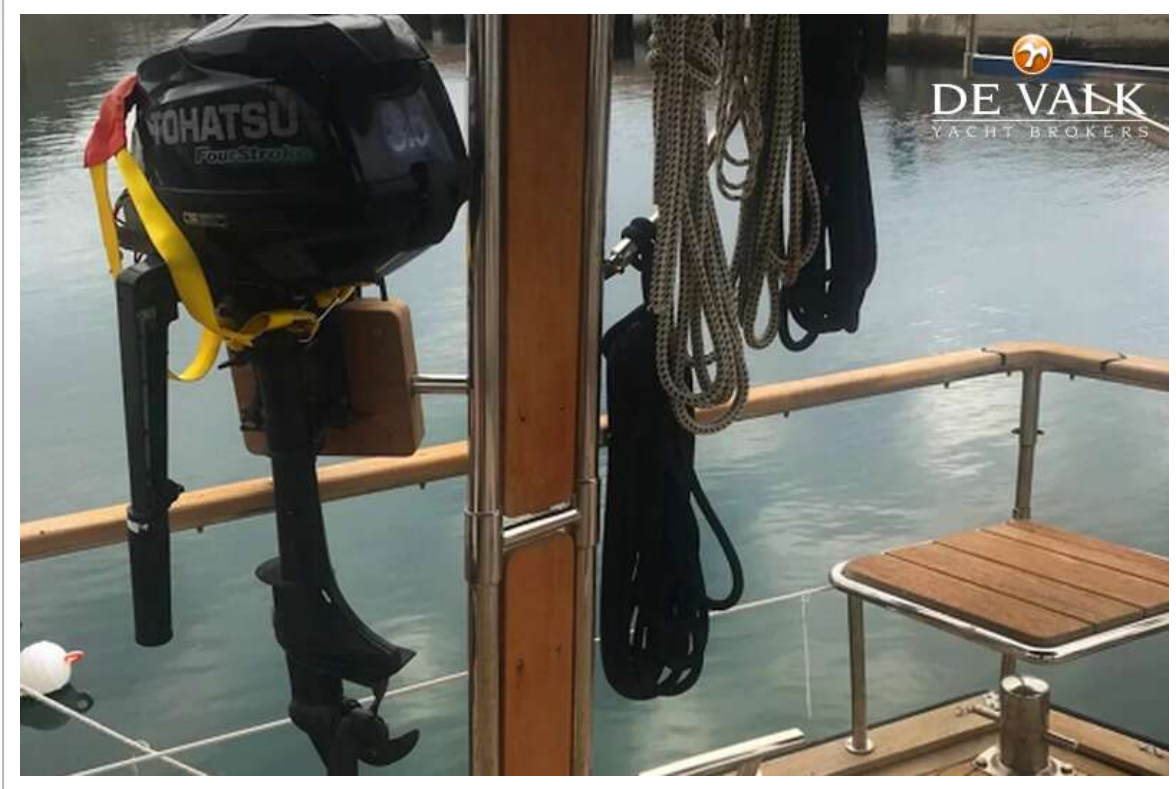


# NAUTICAT 38











# NAUTICAT 38



# NAUTICAT 38



# NAUTICAT 38



