



DE VALK
YACHT BROKERS



SUNSEEKER PORTOFINO 53



DE VALK
YACHT BROKERS

SUNSEEKER PORTOFINO 53

BROKER'S COMMENTS

This Sunseeker Portofino 53 is one of the most extensively upgraded examples on the market, with €320,000 invested with major refits between 2022 and 2024. She benefits from a new MAN port engine (2024, 10 hrs), Humphree fin stabilisers, Raymarine Axiom 15" displays, ultra-quiet A/C, Fusion audio with subwoofer, solar panels, and a fully refinished interior. Featuring a practical 3-cabin layout, retractable sunroof, and teak decks throughout. Managed by a professional captain since 2010, she is presented in excellent condition and ready for the 2025 season. Optional Palma Berth.

Tom Kingham

SPECIFICATIONS

Dimensions	17.37 x 4.57 x 1.23 (m)	Builder	Sunseeker International Ltd
Built	2006	Cabins	3
Material	GRP	Berths	8
Engine(s)	2 x MAN D2848 LE423 diesel	Hp/Kw	2 x 800.00 (hp), 588.80 (kw)
Asking price	€ 390.000 (VAT Paid)	Lying	at sales office

CONTACT

Sales office	De Valk Palma	Telephone	+34 971 40 29 11
Address	Port. Cala Nova, Avda. Joan Miro, 327 07015 Palma de Mallorca ES	E-mail	palma@devalk.nl

DISCLAIMER

These particulars are given in good faith as supplied but cannot be guaranteed.



SUNSEEKER PORTOFINO 53

GENERAL

Model	SUNSEEKER PORTOFINO 53
Type	motor yacht
LOA (m)	17,37
Beam (m)	4,57
Draft (m)	1,23
Year built	2006
Builder	Sunseeker International Ltd
Country	United Kingdom
Designer	Don Shead
Displacement (t)	19,27
Gross tonnage	42,37
CE norm	B
Hull material	GRP
Hull shape	Deep V
Superstructure material	GRP
Deck material	GRP
Deck finish	Non skid
Cockpit deck finish	Teak
Radar arch	Yes
Fuel tank (litre)	2080
Freshwater tank (litre)	500
Wheel steering	Hydraulic
Inside helm position	Starboard side
More info on hull	Professional polish 2024
Extra info	Maintained by a professional service company
Extra info	Full time captain for 14 years
Extra info	NEW (2024 - 10hr) port engine

ACCOMMODATION

Cabins	3
--------	---



SUNSEEKER PORTOFINO 53

Berths	8
Interior	Light Mahogany
Open cockpit	yes
Aft deck	Sunpad
Headroom saloon (m)	2.50
Sliding roof	Hydraulic
Air-conditioning	Ultra quiet with service in 2024 with 4 isolation units
Dinette to convert into berth	Retractable table
Convertible berth	Yes
Sliding door to cockpit	Yes
Sink	Yes
Cooker	Electric induction hob and electric bbq in cockpit
Fridge	In galley and in drinks fridge in cockpit
Ice maker	In cockpit NEW
Owners cabin	Owners cabin forward
Bed length (m)	King sized
Wardrobe	Hanging and drawers
Bathroom	En-suite with toilet
Toilet system	Electric
Shower	Yes
Guest cabin 1	Twin singles
Wardrobe	Hanging and drawers
Bathroom	Day heads
Toilet	Yes
Shower	Yes
Guest cabin 2	Twin singles
Wardrobe	Hanging, drawers and under bed
Wet bar	Outside grill, drinks fridge and ice maker
Tender garage	Yes, space for Williams Jet 325

MACHINERY



SUNSEEKER PORTOFINO 53

No of engines	2
Make	MAN
Type	D2848 LE423
HP	800
kW	588.80
Fuel	diesel
Year installed	2024
Year of overhaul	2024
Maximum speed (kn)	50
Cruising speed (kn)	30
Consumption (l/hr)	463
Range (nm)	463
Engine hours	830
Drive	shaft
Bowthruster	Electric
Generator	Yes
Inverter	Mastervolt
Battery charger/inverter	Mastervolt Chargemaster Plus 24/60
Solar panel	Yes with inverter
Stabilizers	Humphree Fin Stabilizer and Interceptor (2023) with helm screen
Trimtabs	Seakeeper

NAVIGATION

Electric compass	Yes
Multi control display	2x New Raymarine Axiom 15"
VHF	Raymarine
Autopilot	Raymarine
Plotter/GPS	yes
Radar/GPS/plotter	Raymarine with upgraded Radar
Camera	Thermal FLIR night vision



EQUIPMENT

Chain counter	Electronic screen at helm
TV	Yes
TV receiver	Yes
Radio	Yes
Surround Sound System	Bluetooth Fusion upgraded with Subwoofer
Cockpit speakers	Yes
Speakers in salon	Yes



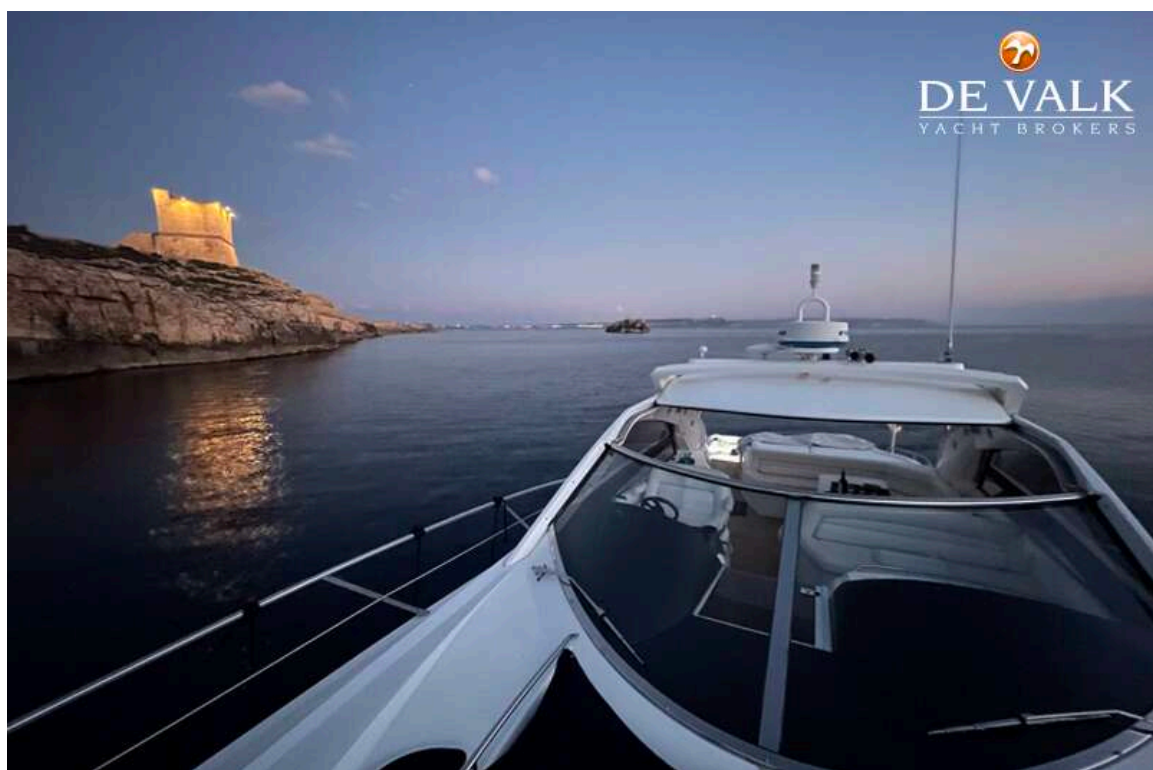


SUNSEEKER PORTOFINO 53

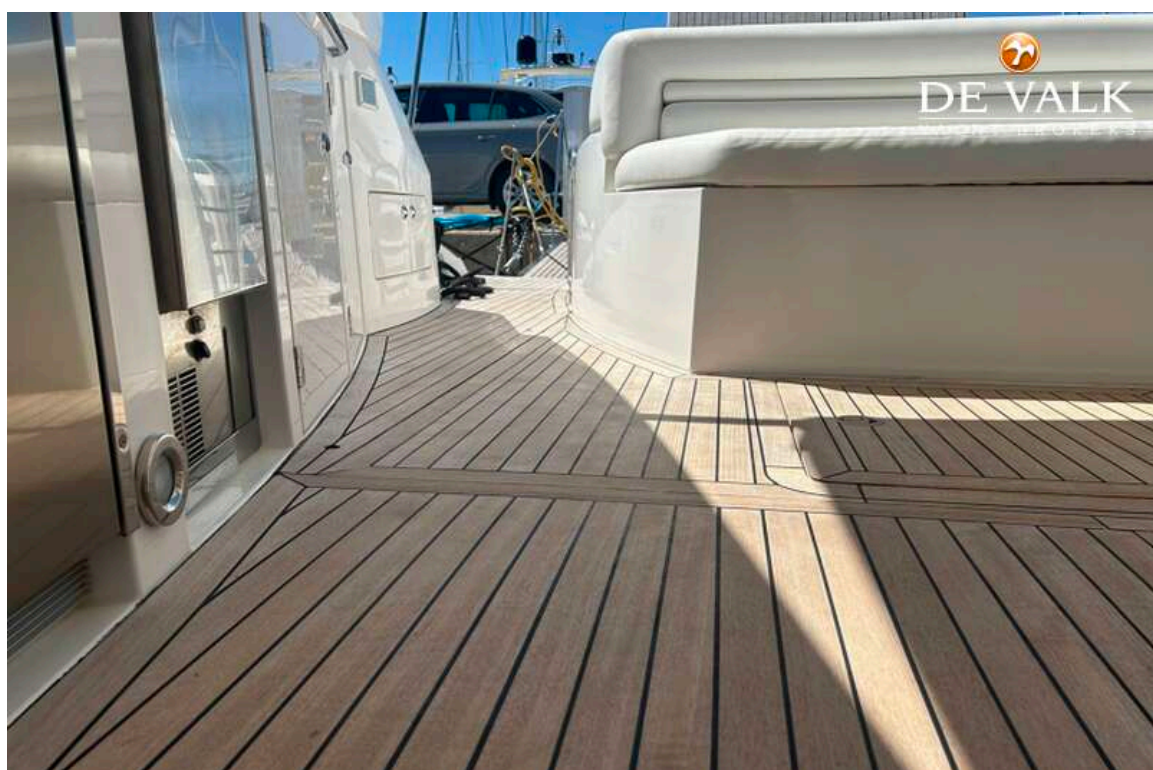


SUNSEEKER PORTOFINO 53





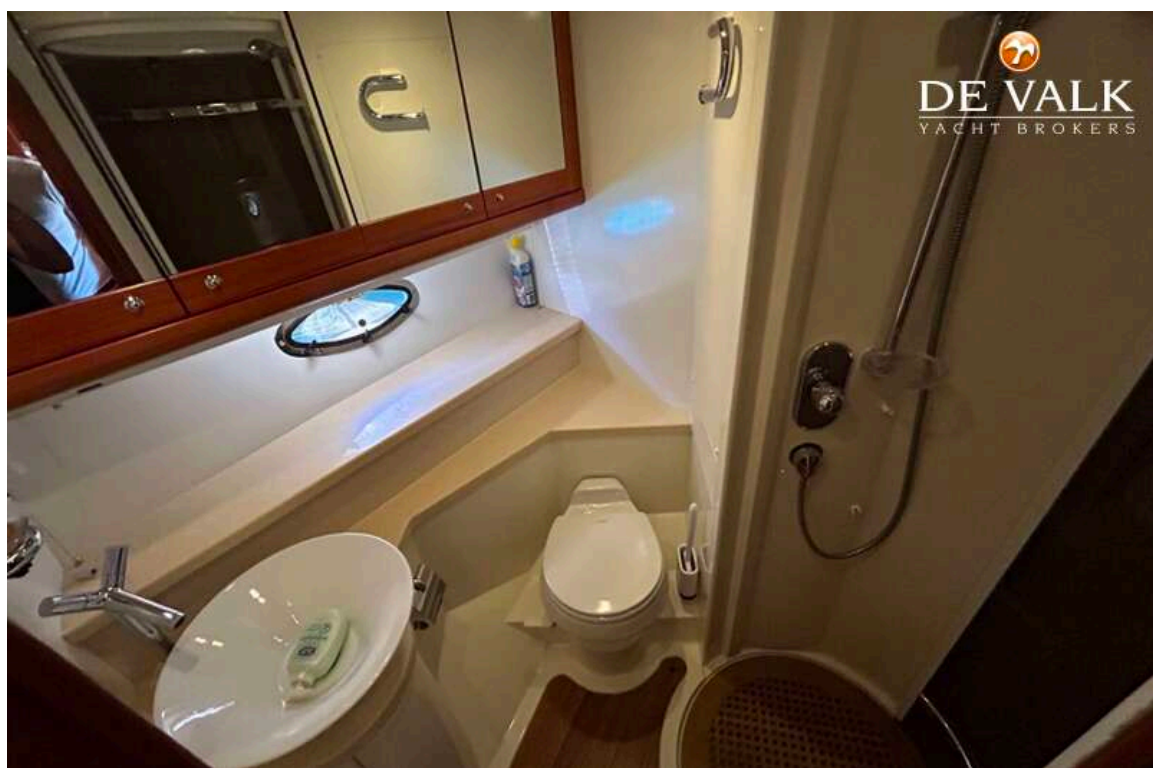
SUNSEEKER PORTOFINO 53



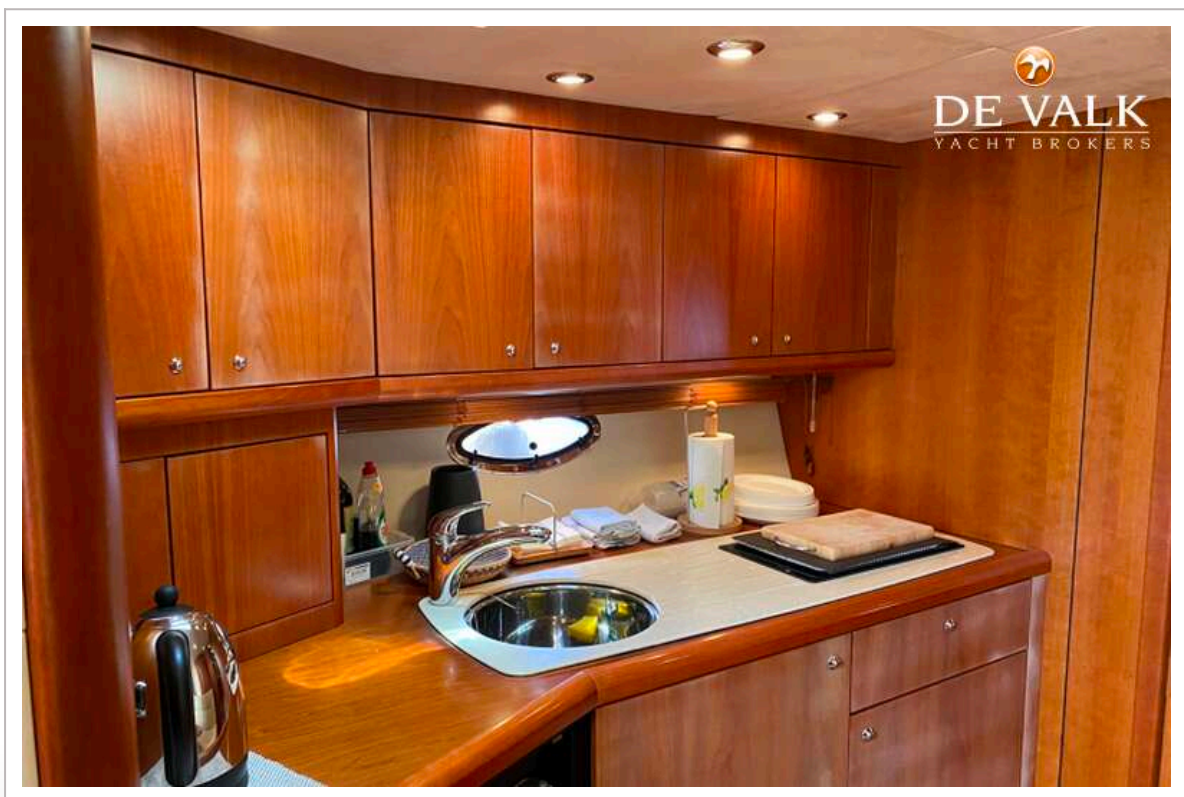
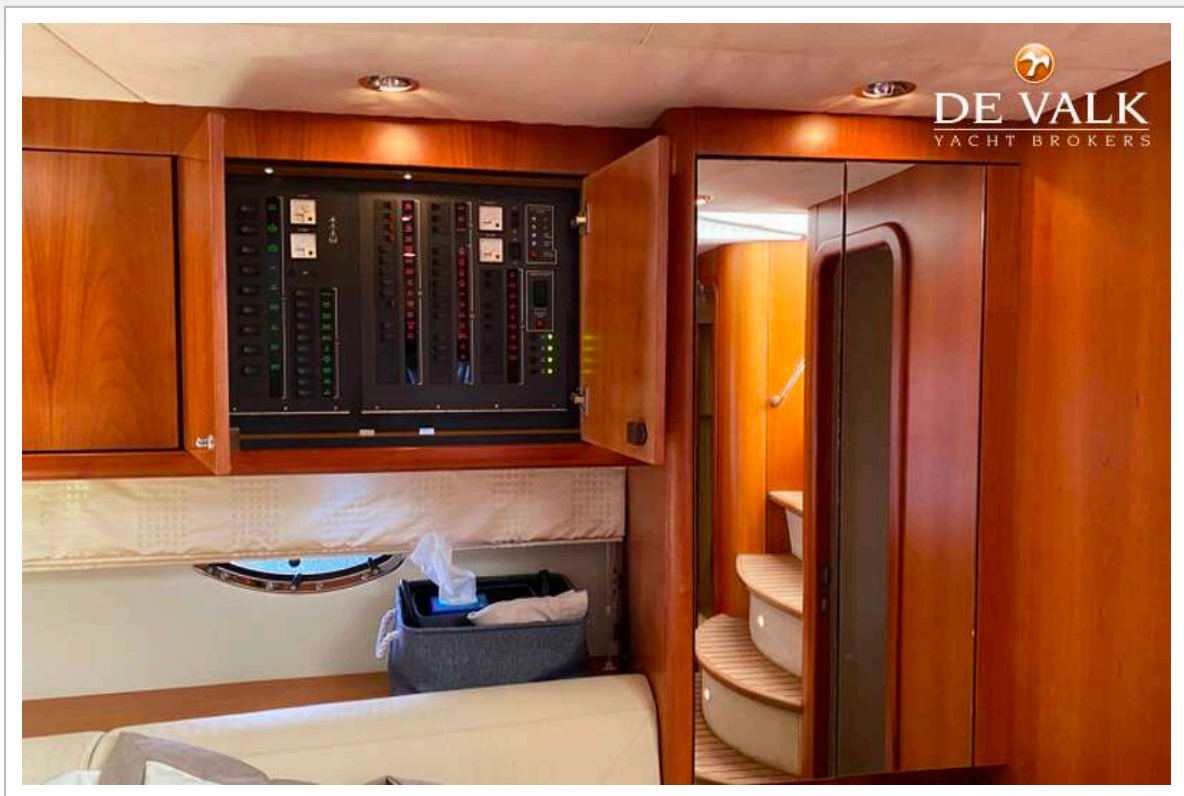
SUNSEEKER PORTOFINO 53



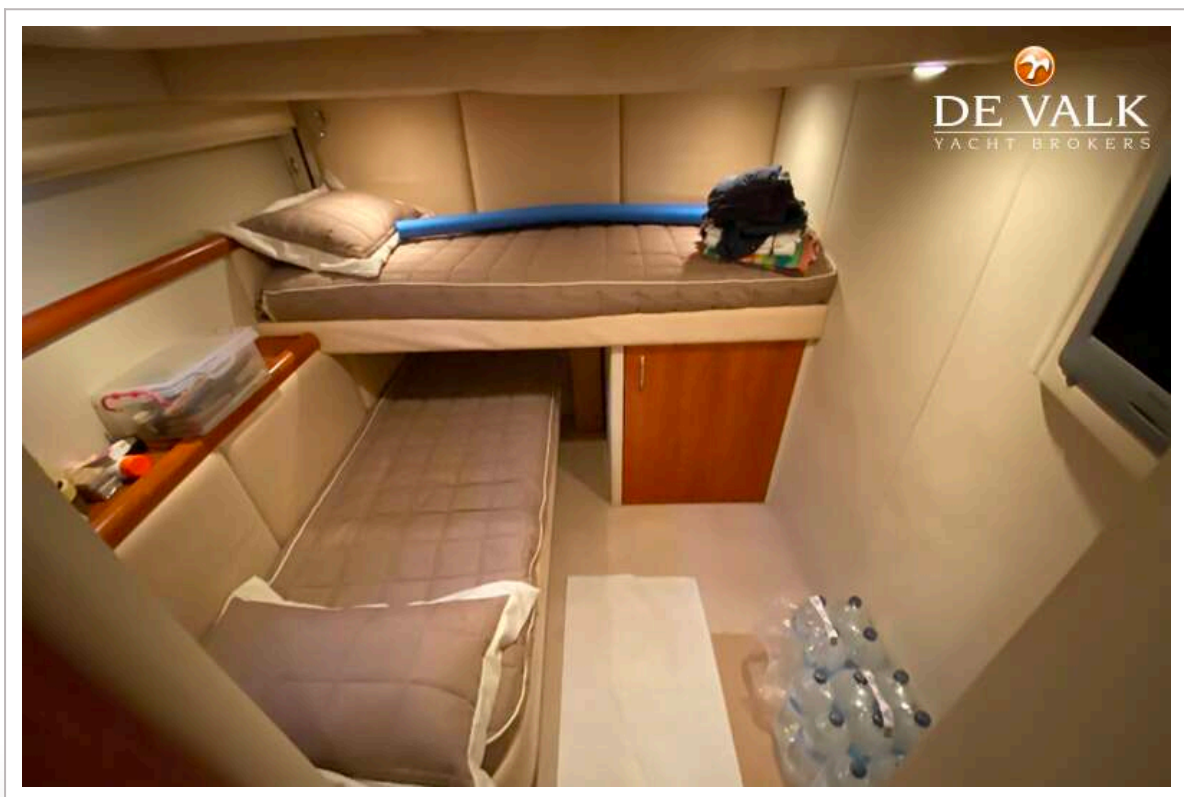
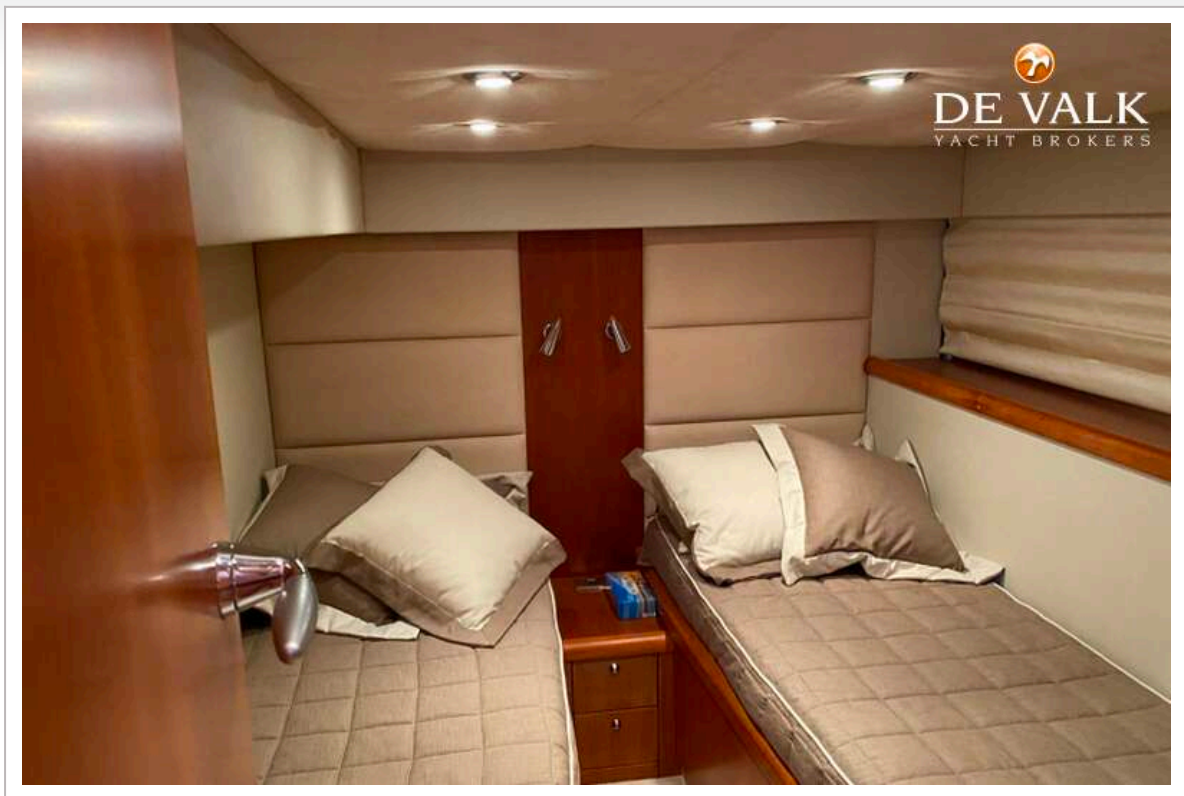
SUNSEEKER PORTOFINO 53



SUNSEEKER PORTOFINO 53



SUNSEEKER PORTOFINO 53



SUNSEEKER PORTOFINO 53

