



GERMAN FRERS 651



BROKER'S COMMENTS

The German Frers 651 series stands out with its timeless design and solid construction. This German Frers 651 is extensively refitted and prepared for shorthanded sailing with furling genoa and staysail, 3 x main electric winches, bow thruster, and 1st and 2nd reef lines to the cockpit. The 12mm teak deck was laid in 2022 together with new Rod rigging and new sails and much more. The German Frers will be auctioned online at Bright Auctions and bids can be placed exclusively through their platform. All auction details can be found at: <https://bit.ly/germanfrers651>

Tue Simon Fasting

SPECIFICATIONS

| | | | |
|---------------------|----------------------------|----------------|---------------------------|
| Dimensions | 20.02 x 5.33 x 3.15 (m) | Builder | IMS Industrie Scardelatto |
| Built | 1982 | Cabins | 3 |
| Material | GRP | Berths | 10 |
| Engine(s) | 1 x Yanmar 4LHA-DTP diesel | Hp/Kw | 200.00 (hp), 147.20 (kw) |
| Asking price | € 50.000 (VAT Paid) | Lying | at sales office |

CONTACT

| | | | |
|---------------------|---|------------------|---------------------|
| Sales office | De Valk Barcelona | Telephone | +34 932 202 825 |
| Address | Barcelona region 08392 Barcelona ES | E-mail | barcelona@devalk.nl |

DISCLAIMER

These particulars are given in good faith as supplied but cannot be guaranteed.



GENERAL

| | |
|------------------------------|---|
| Model | GERMAN FRERS 651 |
| Type | sailing yacht |
| LOA (m) | 20,02 |
| Beam (m) | 5,33 |
| Draft (m) | 3,15 |
| Year built | 1982 |
| Builder | IMS Industrie Scardelatto |
| Country | Italy |
| Designer | German Frers |
| Displacement (t) | 34 |
| CE norm | A |
| Hull material | GRP |
| Keel type | fin keel Led |
| Deck material | 19+5mm PVC panels + fiberglass laminate installed in 2022 |
| Deck finish | teak New 12mm installed in 2022 |
| Antifouling (year) | 2025 |
| Deckhatch | 6 new Lewmar Ocean 30 |
| Fuel tank (litre) | 2 X 400 |
| Freshwater tank (litre) | 3 X 1000 |
| Level indicator (freshwater) | yes |
| More info on hull | Hull is solid fiberglass laminate. No balsa core. |
| More info on paintwork | Hull and deck painted in 2020 |
| Extra info | All plumbing new (2020) |
| Extra info | On auction |

ACCOMMODATION

| | |
|------------------|---------------------|
| Cabins | 3 |
| Berths | 10 |
| Air-conditioning | reverse cycle airco |
| Chart table | yes |



| | |
|-----------------------|---|
| Aft Cabin | yes |
| Galley | U-shaped |
| Sink | stainless steel |
| Cooker | induction |
| Oven | Electric |
| Extractor | yes |
| Fridge | 2 fridges with small freezers |
| Freezer | yes |
| Hot water system | 220V |
| Water pressure system | electrical |
| Owners cabin | double bed |
| Wardrobe | hanging/drawers/shelves |
| Bathroom | en suite |
| Shower | yes |
| Guest cabin 1 | double bed Folding |
| Wardrobe | drawers and shelves |
| Bathroom | Forward - shared with guest cabin 2 |
| Shower | yes |
| Guest cabin 2 | double bed Folding |
| Wardrobe | drawers and shelves |
| Extra info | 1 day head with saltwater flush |
| Extra info | 10 berths: aft stateroom king size double bed, 2 forward cabins |
| Extra info | Single aft berth, saloon single berth + table/sittee 2 berths |

MACHINERY

| | |
|---------------|----------|
| No of engines | 1 |
| Make | Yanmar |
| Type | 4LHA-DTP |
| HP | 200 |
| kW | 147.20 |
| Fuel | diesel |



| | |
|--------------------------|---|
| Engine cooling system | freshwater heat exchanger |
| Engine controls | electrical |
| Bowthruster | Vetus BOW2204D |
| Exhaust | watercooled |
| Propeller type | MaxProp Easy 4, 26 inch blades - folding (2025) |
| Propeller shaft material | New stuffing box and recalibrated shaft (2025) |
| Manual bilge pump | yes |
| Electric bilge pump | yes |
| Electrical installation | All the electrical installations new (2020) |
| Generator | Paguro 8500 8,5KW (2020) |
| Batteries | 4 x 180Ah AGM Batteries |
| Start battery | yes |
| Generator battery | yes |
| Bowthruster battery | yes |
| Shorepower | with cable 32A |
| Extra info | Machinery revised and serviced in 2025 |

NAVIGATION

| | |
|------------------------|-------------------------|
| Compass | yes |
| Depth sounder | Raymarine |
| Windset | yes |
| VHF | VHF ICOM ICM 510 |
| VHF handheld | yes |
| Autopilot | Raymarine i70 autopilot |
| Rudder angle indicator | yes |
| Radar | Raymarine Quantum Radar |
| Radar/GPS/plotter | Raymarine Axiom Pro 12s |
| AIS receiver | yes |
| AIS transponder | yes |
| AIS transceiver | yes |
| Navigation lights | yes |



EQUIPMENT

| | |
|------------------|--|
| Sprayhood | Fixed / grp |
| Fixed hardtop | yes |
| Cockpit table | yes |
| Boarding ladder | yes |
| Gangway | yes |
| Anchor | yes |
| Anchor chain | yes |
| Windlass | Motor of Lewmar V5 replaced |
| Life raft | 2020 |
| Life raft (pers) | 12 |
| Extra info | 230V sockets and 12V USB sockets throughout the boat |

RIGGING

| | |
|-----------------------|--|
| Rigging | Cutter with furling genoa and staysail |
| Standing rigging | Rod Installed in 2022 by Navtec |
| Material mast | aluminium Painted in 2022 with pulleys and blocks replaced |
| Mainsail | New 2020 |
| Genoa | New 2022 (115%) |
| Genoa furler | Furlex 500 |
| Staysail | yes |
| Staysail furler | yes |
| Backstay adjuster | hydraulic Revised 2025 |
| Boomvang | hydraulic Serviced (2025) |
| Primary sheet winch | Electric 3 X Harken 980.3 and 1 X 60.2 |
| Secondary sheet winch | Manual 2 X Harken 48 and 2 X 60.2 |
| Halyard winches | Manual 2 X Harken 53 and 2 X 60.2 on deck close to mast |



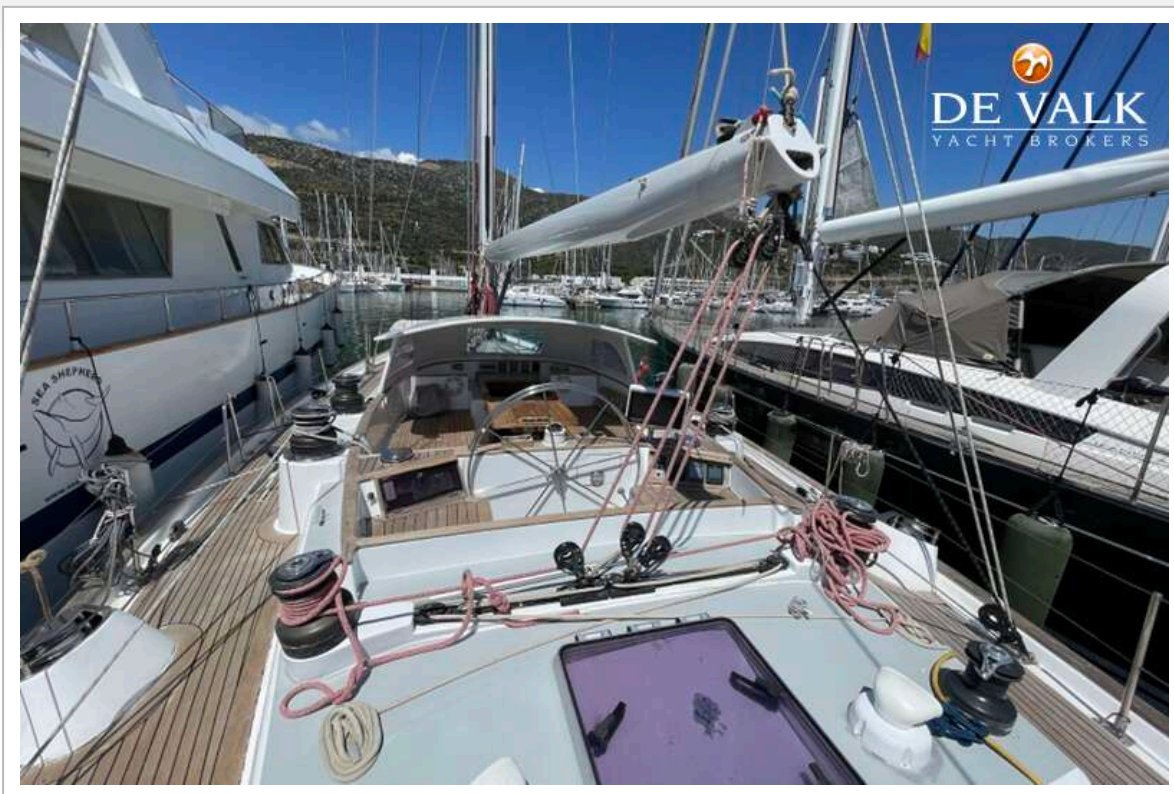


This yacht will be auctioned.
Please visit www.devalk.nl for further details.

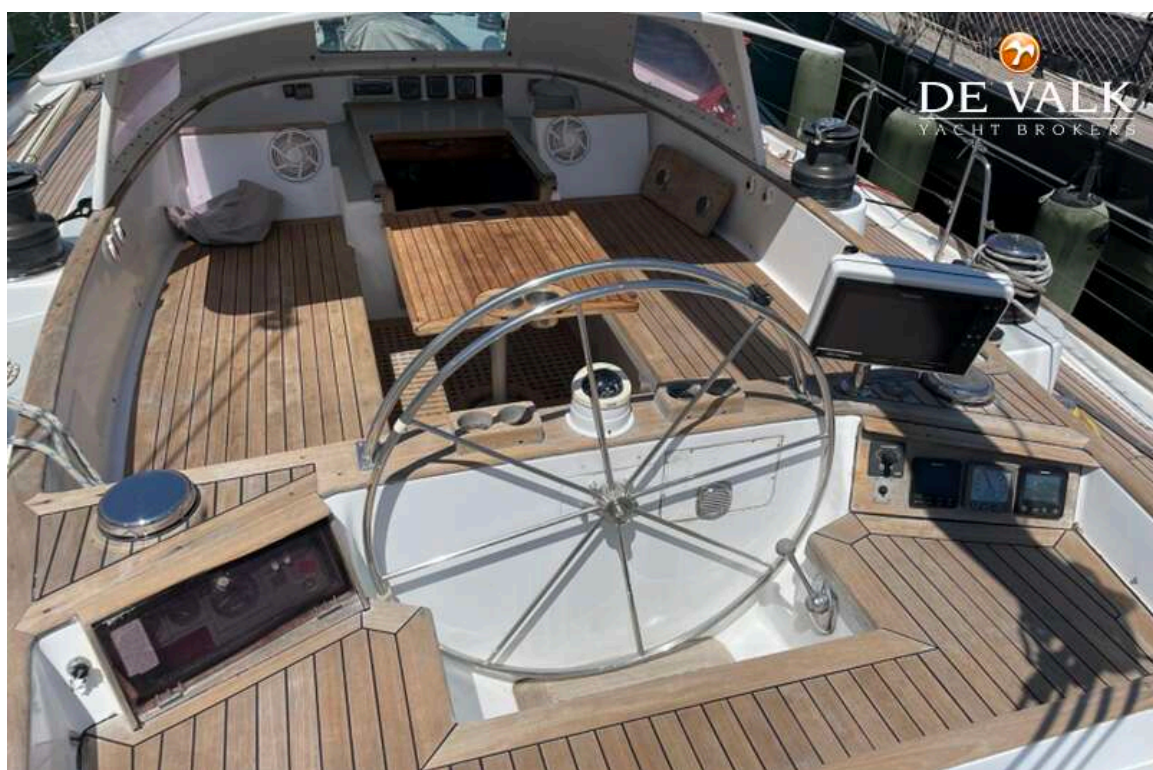
Deze boot wordt geveild.
Kijk voor meer informatie op www.devalk.nl

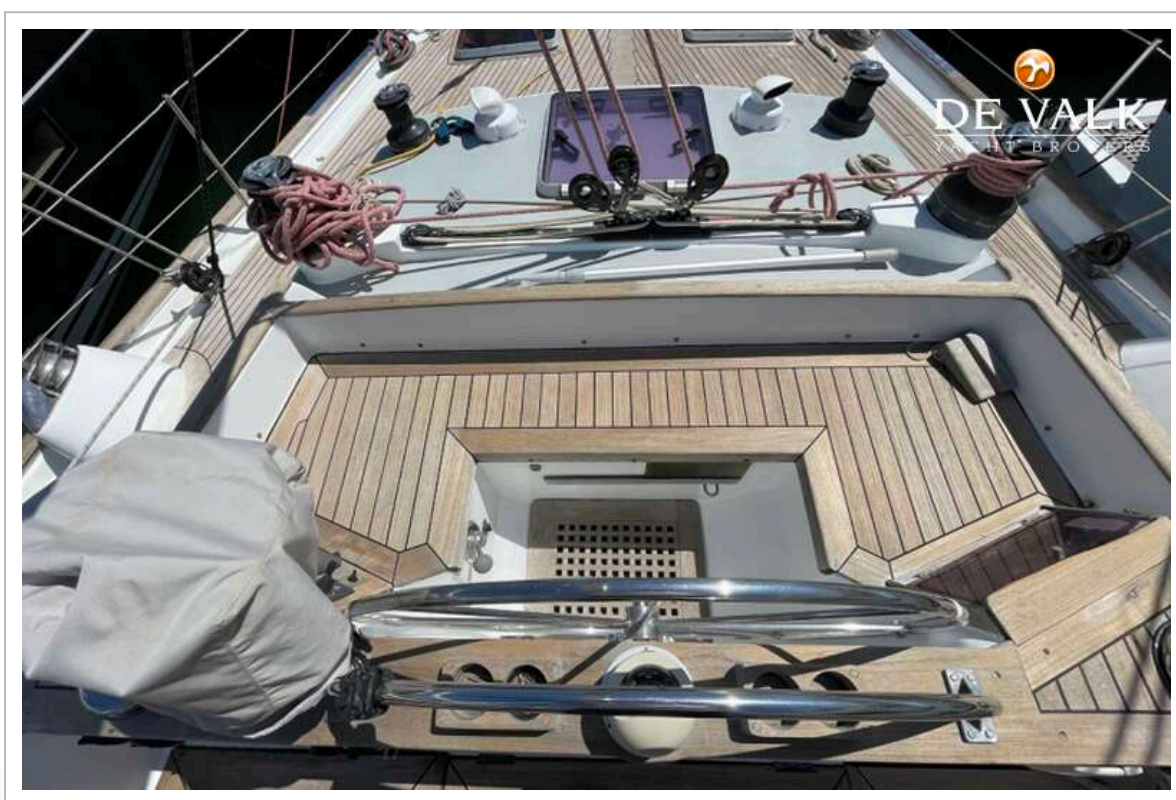
Dieses Boot wird versteigert.
Für weitere informationen besuchen Sie
www.devalk.nl



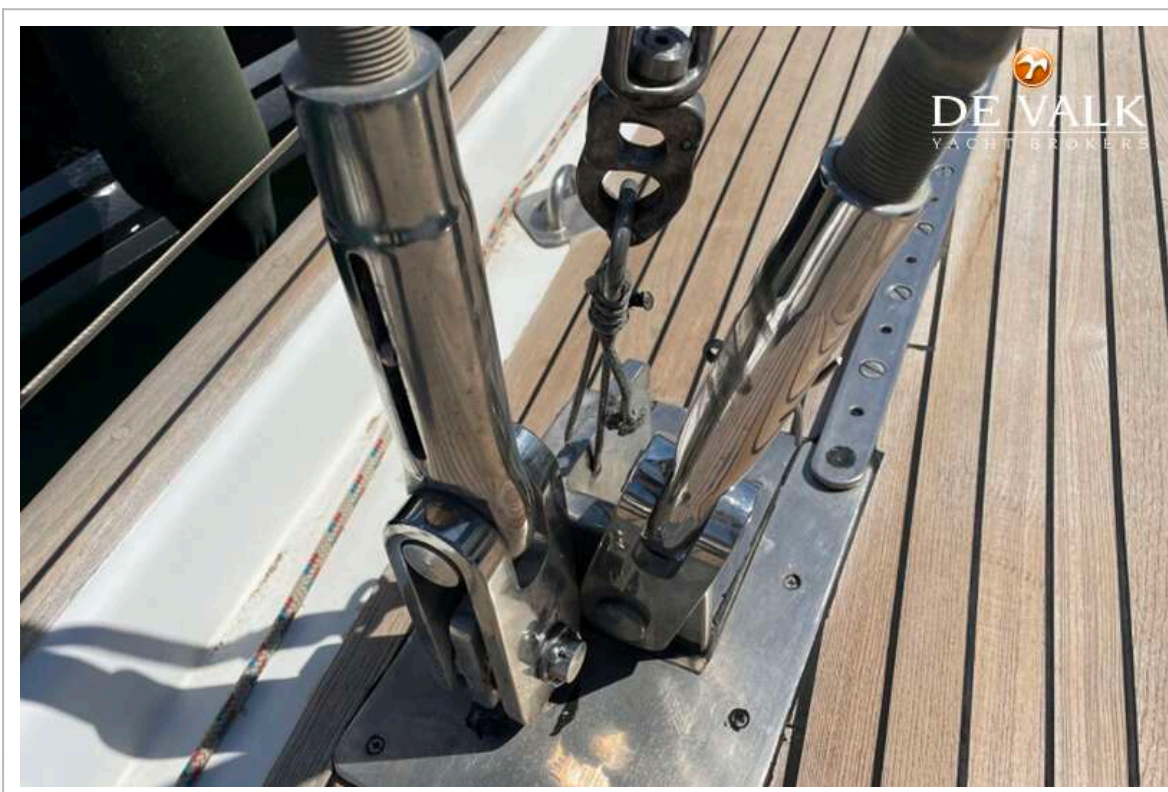


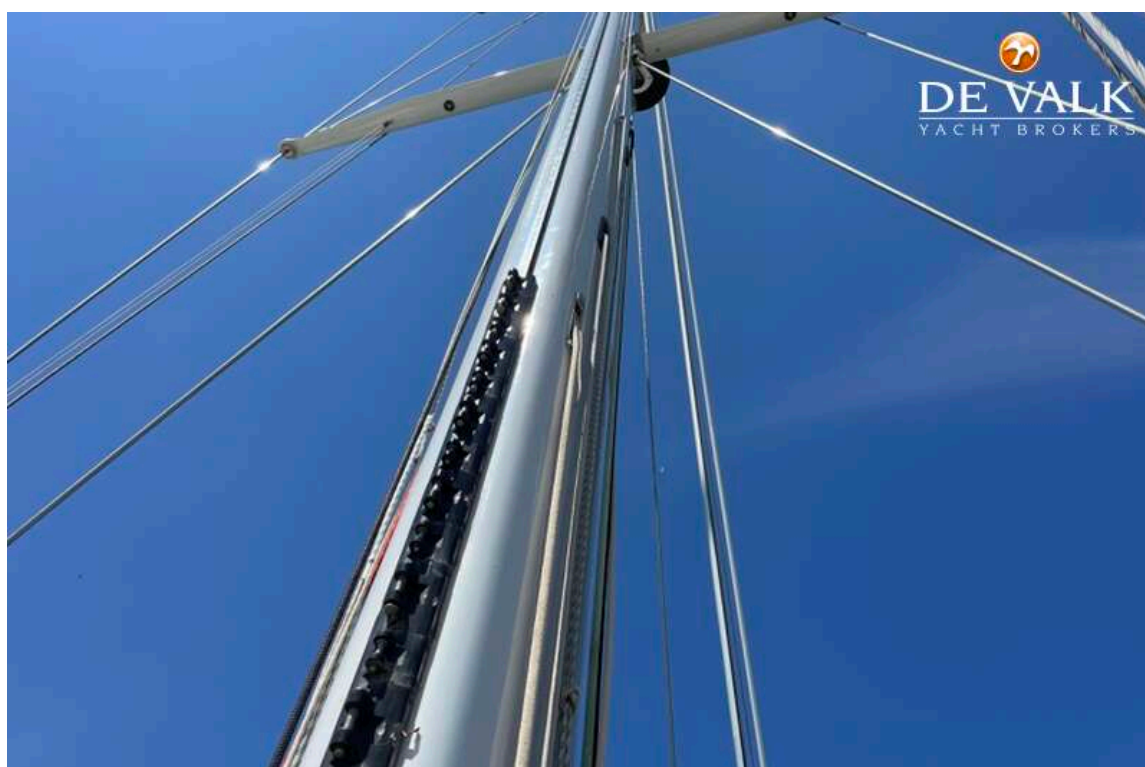
GERMAN FRERS 651

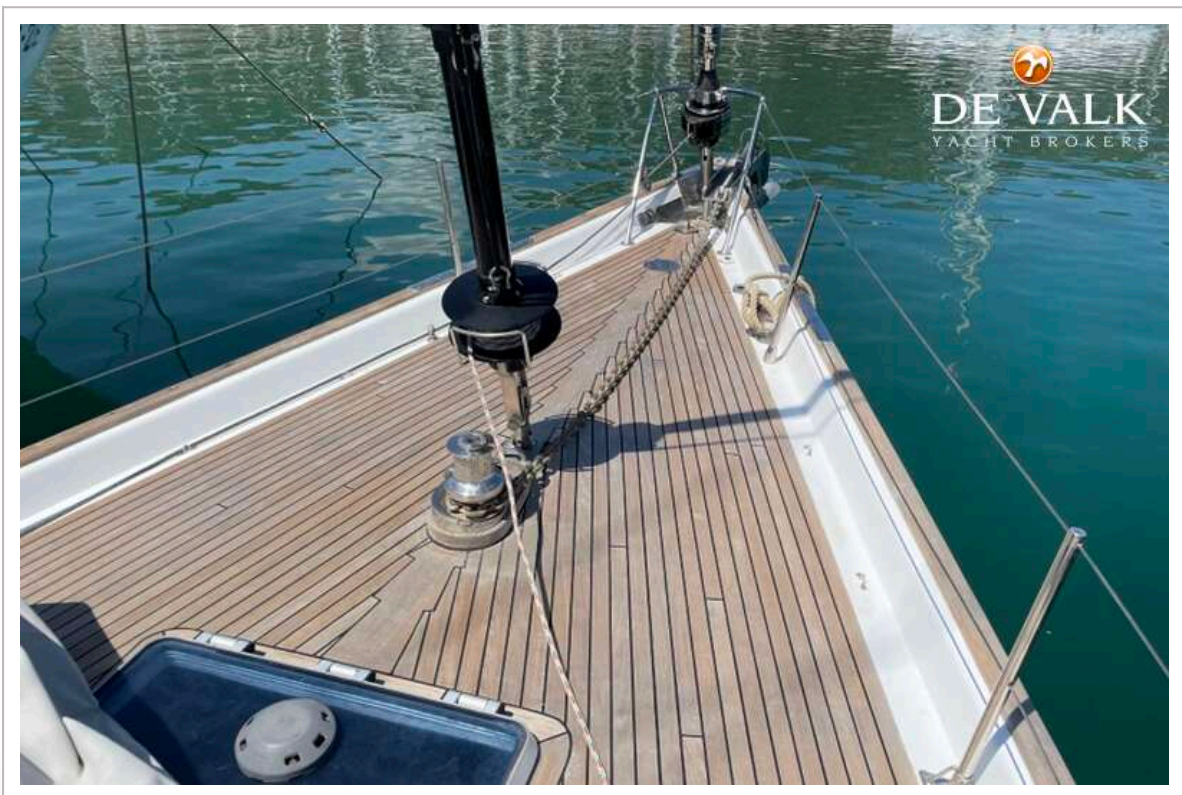




GERMAN FRERS 651

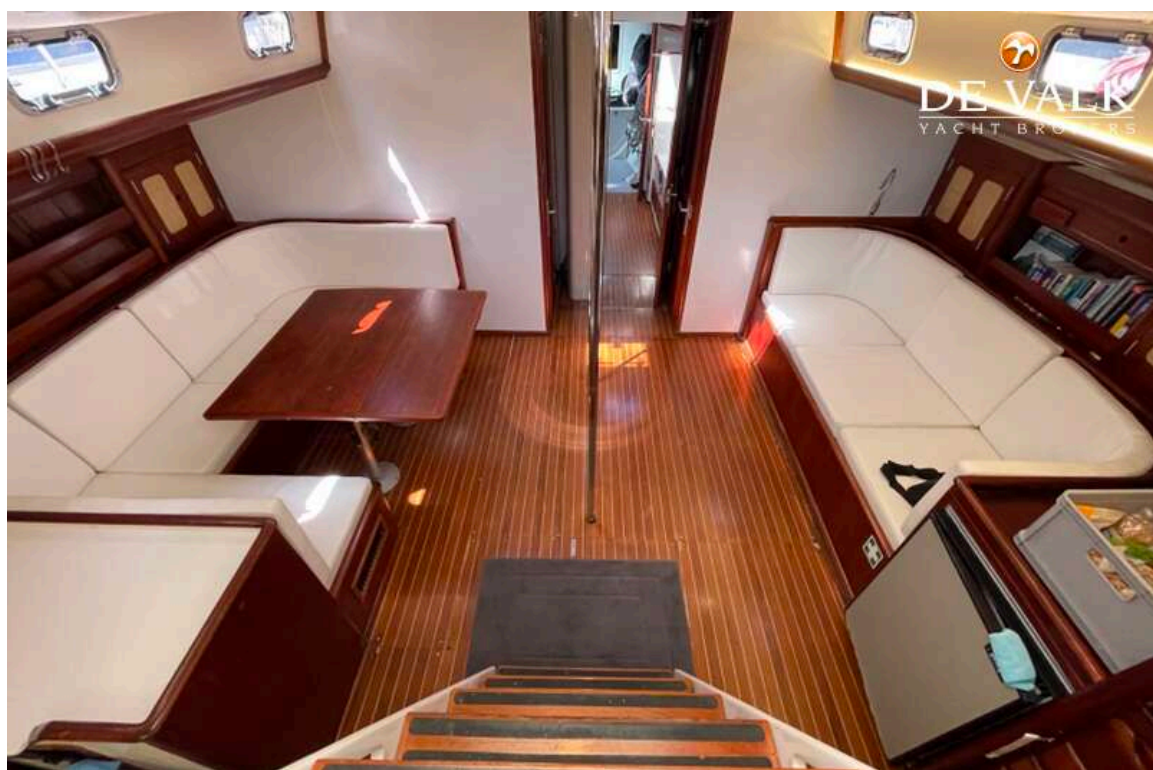




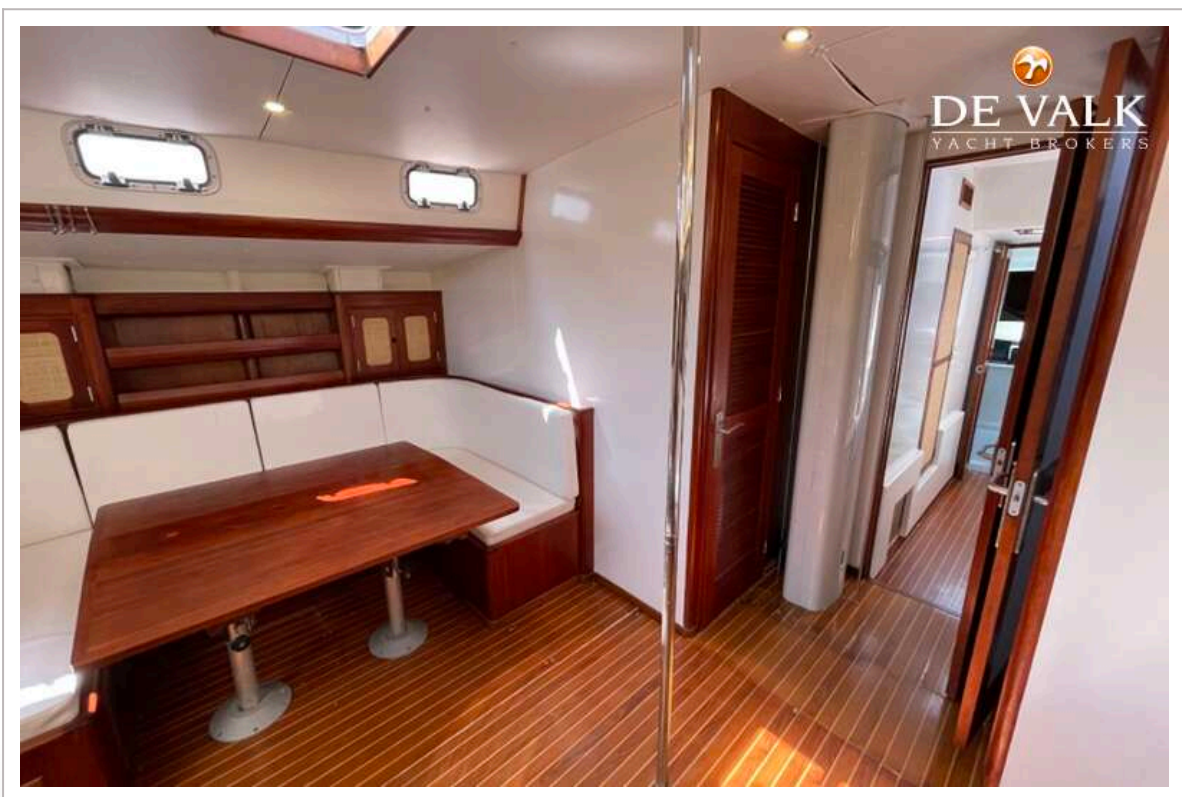
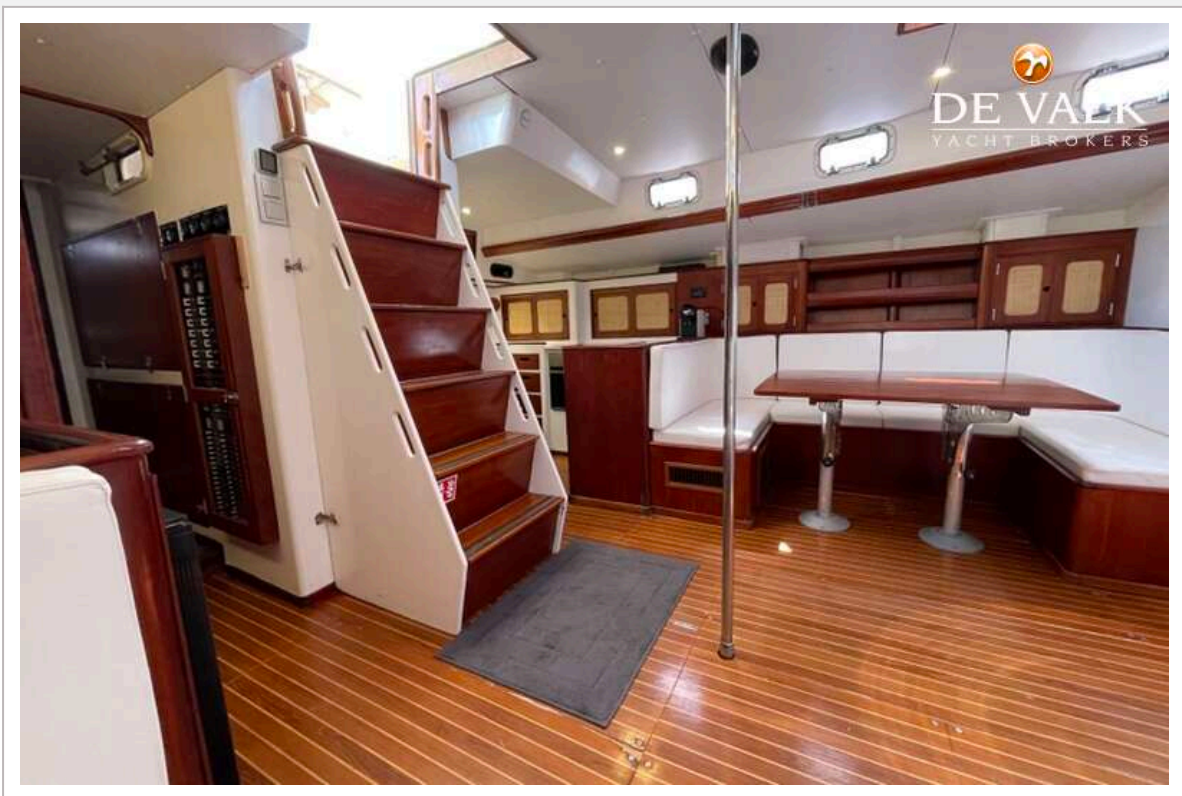


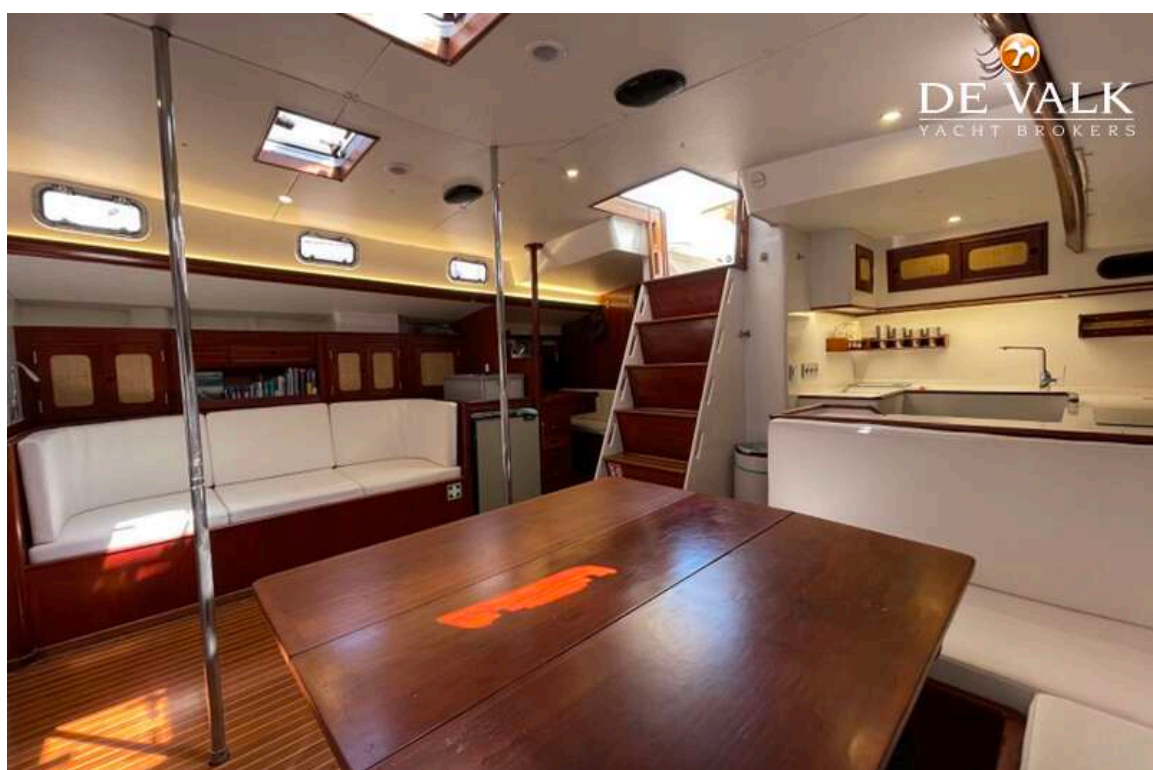
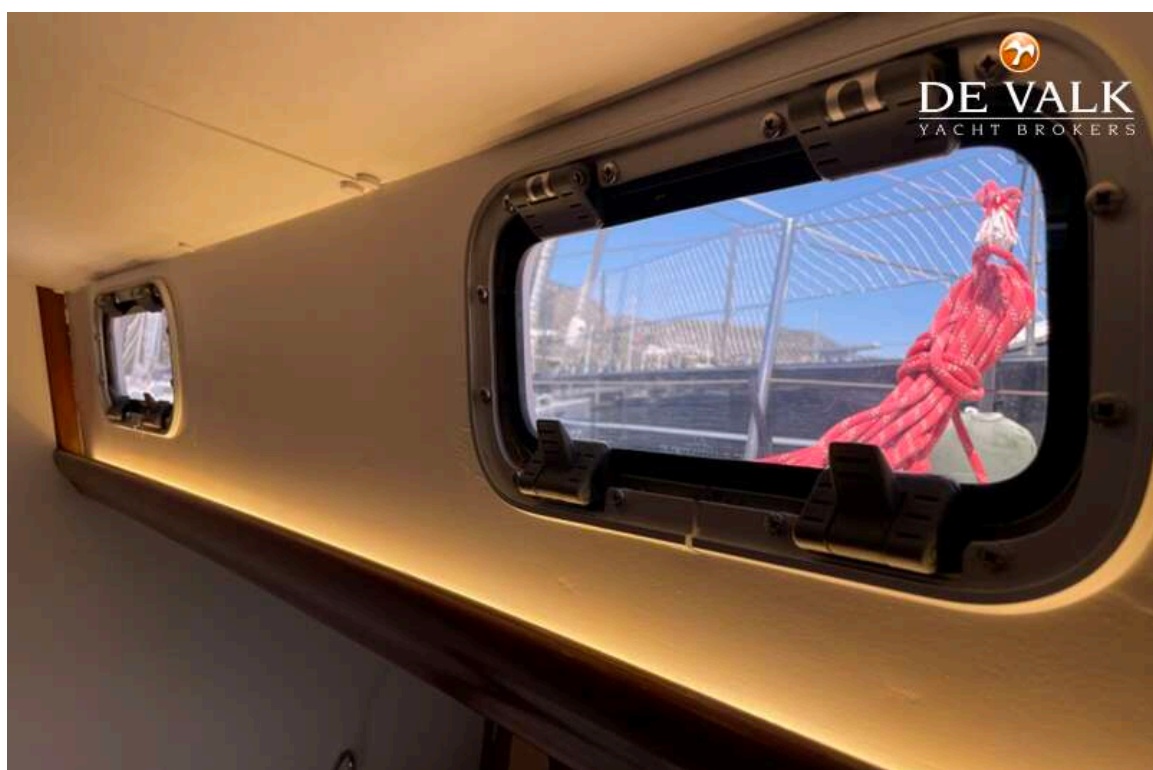


GERMAN FRERS 651



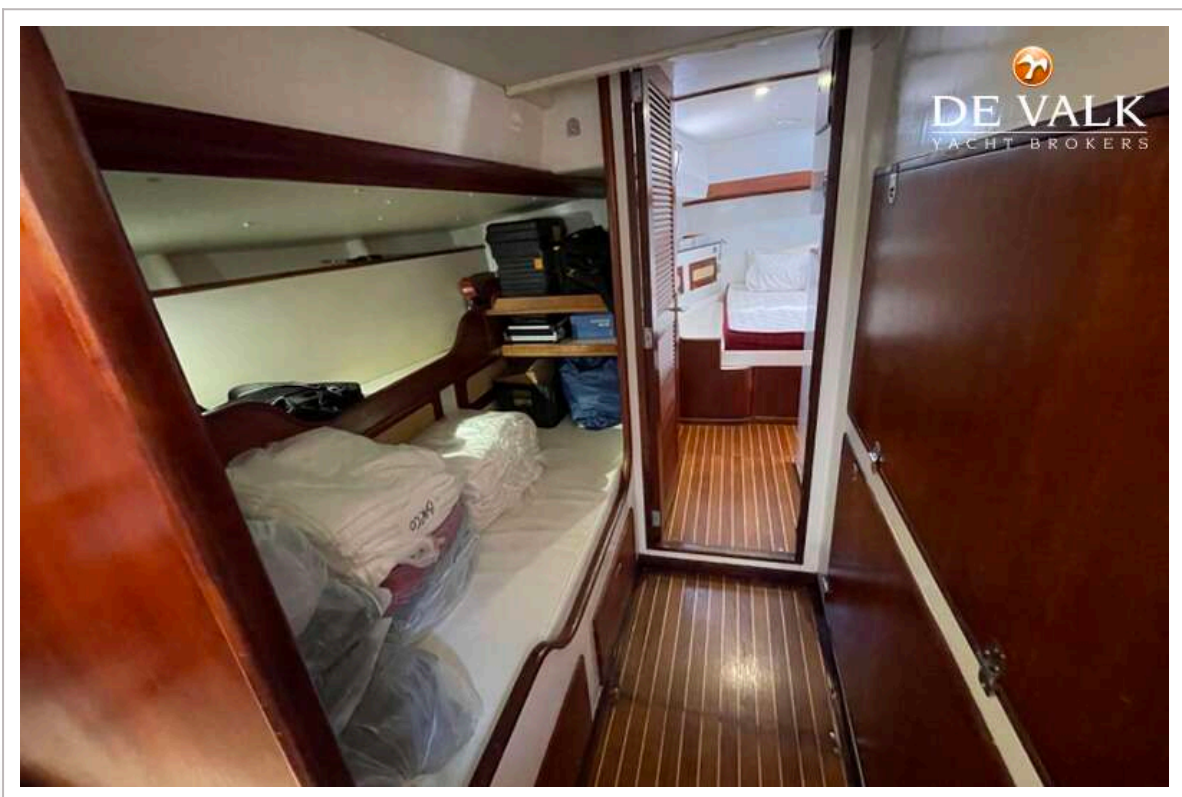
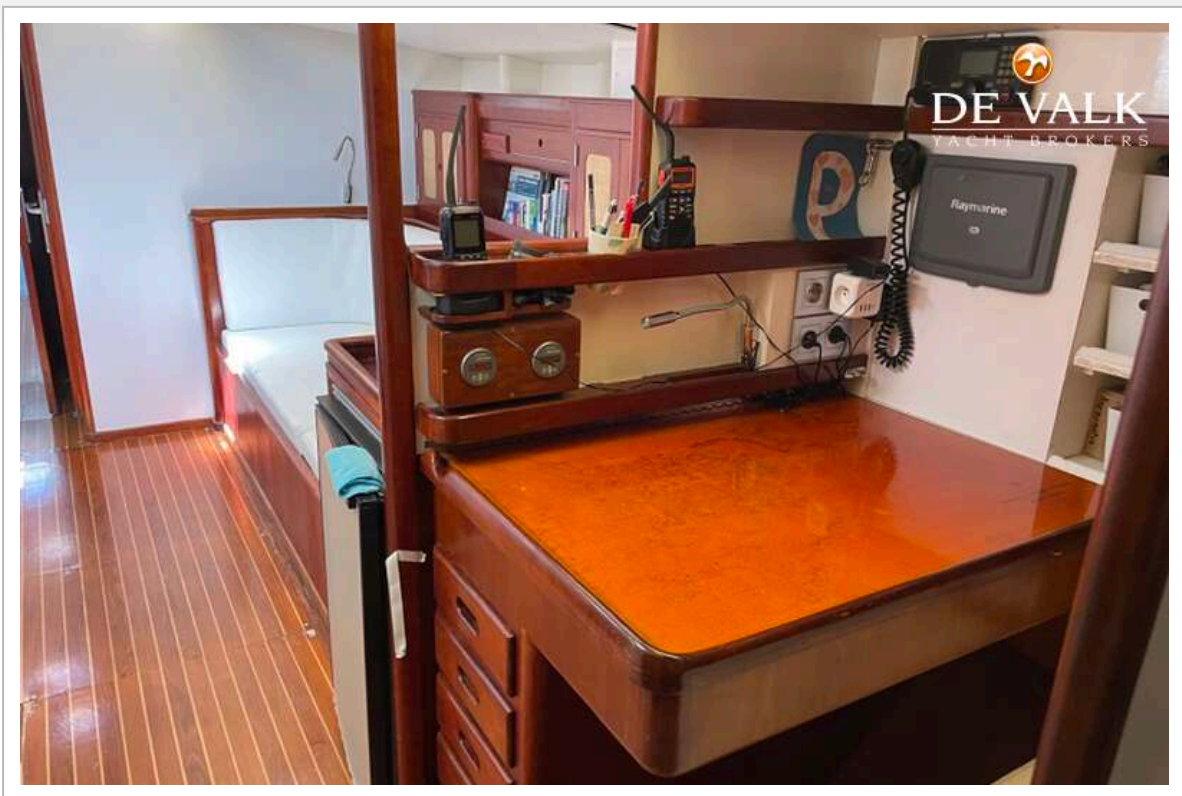
GERMAN FRERS 651



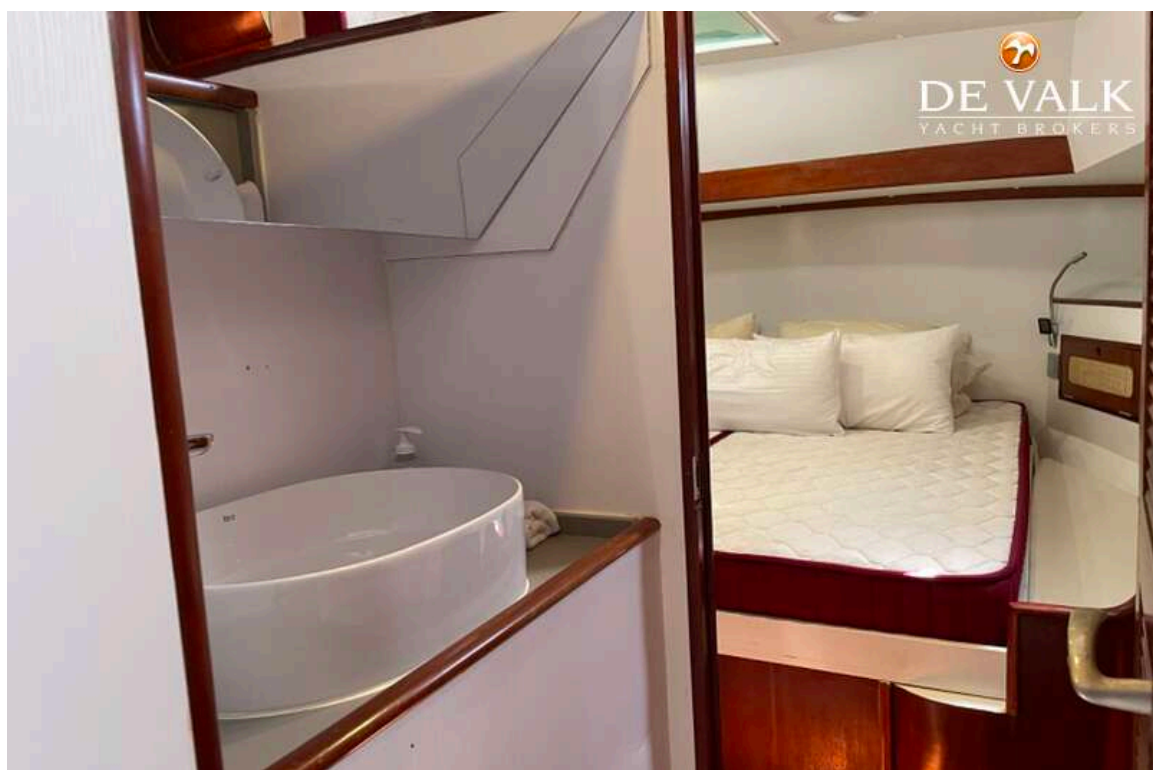


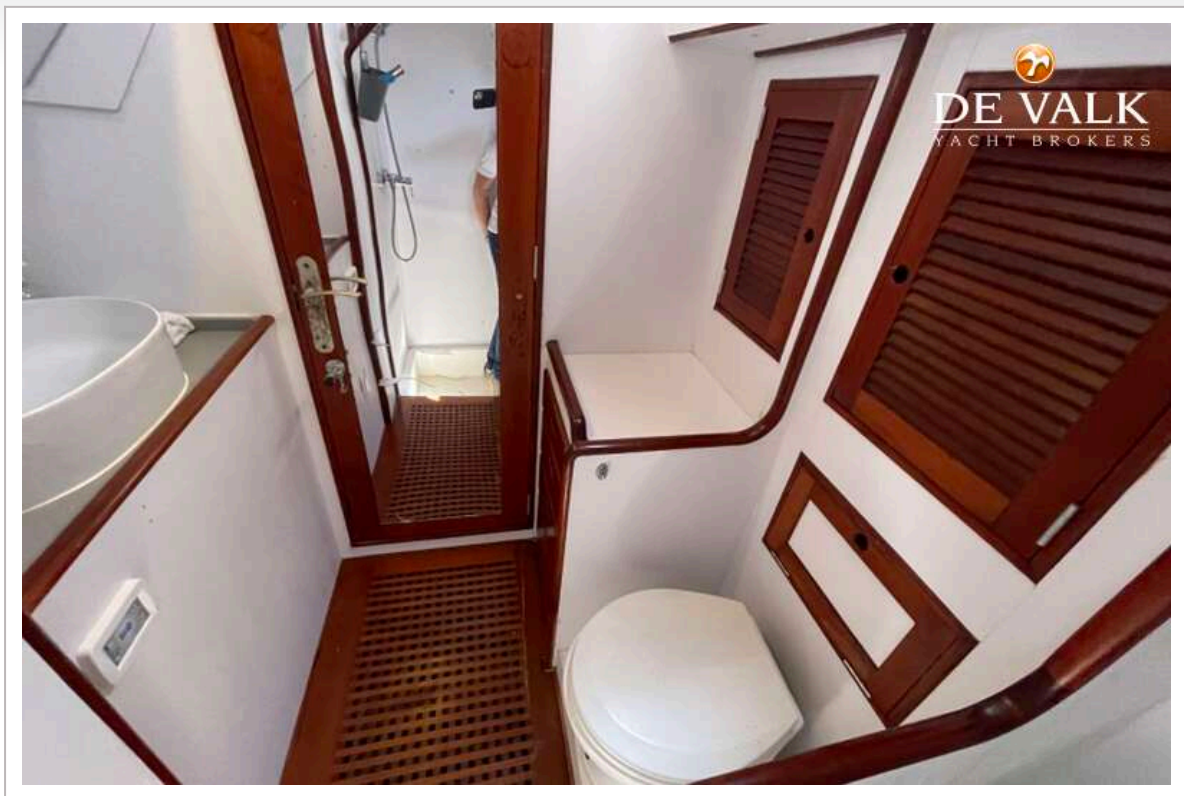


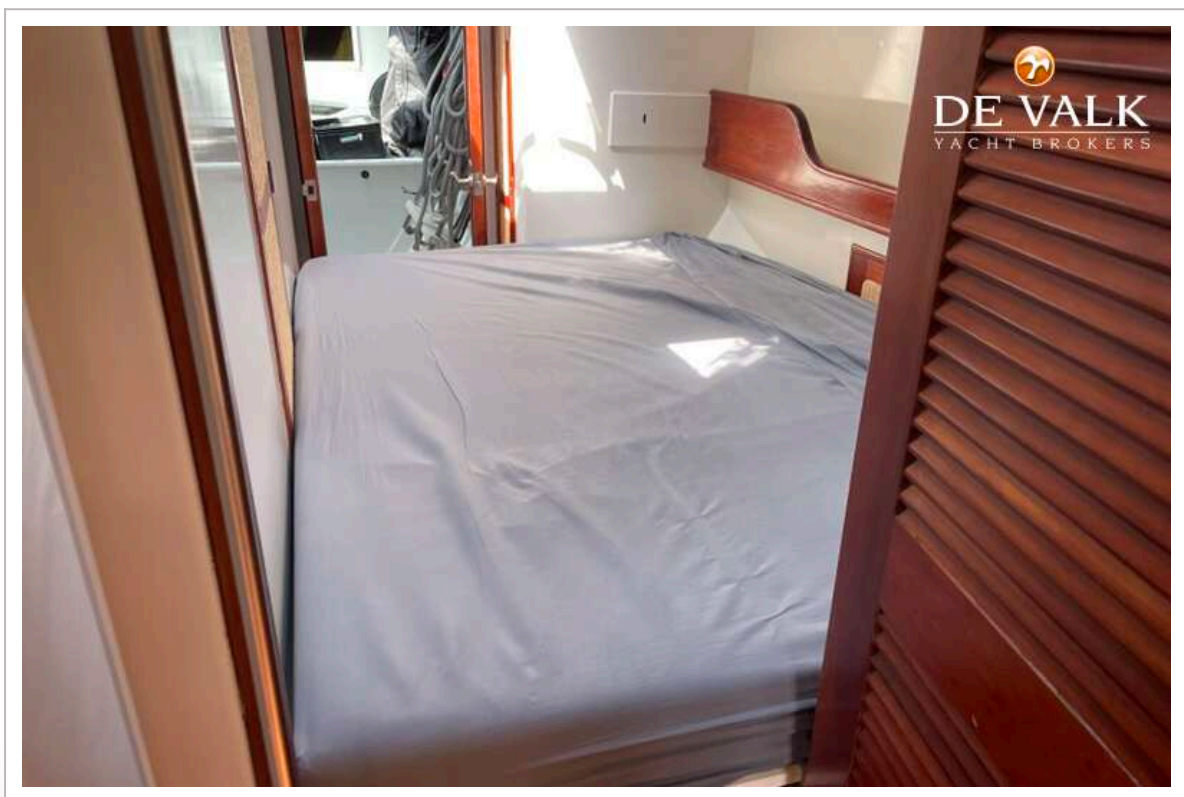
GERMAN FRERS 651



GERMAN FRERS 651







GERMAN FRERS 651

