



SWAN PROTOTYPE GERMAN FRERS 651



SWAN PROTOTYPE GERMAN FRERS 651

BROKER'S COMMENTS

The German Frers 651 series stands out with its timeless design and solid construction. This German Frers 651 is extensively refitted and prepared for shorthanded sailing with furling genoa and staysail, 3 x main electric winches, bow thruster, and 1st and 2nd reef lines to the cockpit. The 12mm teak deck was laid in 2022 together with new Rod rigging and new sails and much more. This incredible yacht can be viewed south of Barcelona.

Tue Simon Fasting

SPECIFICATIONS

Dimensions	20.02 x 5.33 x 3.15 (m)	Builder	IMS Industrie Scardelatto
Built	1982	Cabins	3
Material	GRP	Berths	10
Engine(s)	1 x Yanmar 4LHA-DTP diesel	Hp/Kw	200.00 (hp), 147.20 (kw)
Asking price	€ 268.000 (VAT Paid)	Lying	elsewhere / Not at sales office

CONTACT

Sales office	De Valk Barcelona	Telephone	+34 932 202 825
Address	Barcelona region 08392 Barcelona ES	E-mail	barcelona@devalk.nl

DISCLAIMER

These particulars are given in good faith as supplied but cannot be guaranteed.



SWAN PROTOTYPE GERMAN FRERS 651

GENERAL

Model	SWAN PROTOTYPE GERMAN FRERS 651
Type	sailing yacht
LOA (m)	20,02
Beam (m)	5,33
Draft (m)	3,15
Year built	1982
Builder	IMS Industrie Scardelatto
Country	Italy
Designer	German Frers
Displacement (t)	34
CE norm	A
Hull material	GRP
Keel type	fin keel Led
Deck material	19+5mm PVC panels + fiberglass laminate installed in 2022
Deck finish	teak New 12mm installed in 2022
Antifouling (year)	2025
Deckhatch	6 new Lewmar Ocean 30
Fuel tank (litre)	2 X 400
Freshwater tank (litre)	3 X 1000
Level indicator (freshwater)	yes
More info on hull	Hull is solid fiberglass laminate. No balsa core.
More info on paintwork	Hull and deck painted in 2020
Extra info	All plumbing new (2020)
Extra info	yes

ACCOMMODATION

Cabins	3
Berths	10
Air-conditioning	reverse cycle airco
Chart table	yes



Aft Cabin	yes
Galley	U-shaped
Sink	stainless steel
Cooker	induction
Oven	Electric
Extractor	yes
Fridge	2 fridges with small freezers
Freezer	yes
Hot water system	220V
Water pressure system	electrical
Owners cabin	double bed
Wardrobe	hanging/drawers/shelves
Bathroom	en suite
Shower	yes
Guest cabin 1	double bed Folding
Wardrobe	drawers and shelves
Bathroom	Forward - shared with guest cabin 2
Shower	yes
Guest cabin 2	double bed Folding
Wardrobe	drawers and shelves
Extra info	1 day head with saltwater flush
Extra info	10 berths: aft stateroom king size double bed, 2 forward cabins
Extra info	Single aft berth, saloon single berth + table/sittee 2 berths

MACHINERY

No of engines	1
Make	Yanmar
Type	4LHA-DTP
HP	200
kW	147.20
Fuel	diesel



Engine cooling system	freshwater heat exchanger
Engine controls	electrical
Bowthruster	Vetus BOW2204D
Exhaust	watercooled
Propeller type	MaxProp Easy 4, 26 inch blades - folding (2025)
Propeller shaft material	New stuffing box and recalibrated shaft (2025)
Manual bilge pump	yes
Electric bilge pump	yes
Electrical installation	All the electrical installations new (2020)
Generator	Paguro 8500 8,5KW (2020)
Batteries	4 x 180Ah AGM Batteries
Start battery	yes
Generator battery	yes
Bowthruster battery	yes
Shorepower	with cable 32A
Extra info	Machinery revised and serviced in 2025

NAVIGATION

Compass	yes
Depth sounder	Raymarine
Windset	yes
VHF	VHF ICOM ICM 510
VHF handheld	yes
Autopilot	Raymarine i70 autopilot
Rudder angle indicator	yes
Radar	Raymarine Quantum Radar
Radar/GPS/plotter	Raymarine Axiom Pro 12s
AIS receiver	yes
AIS transponder	yes
AIS transceiver	yes
Navigation lights	yes



EQUIPMENT

Sprayhood	Fixed / grp
Fixed hardtop	yes
Cockpit table	yes
Boarding ladder	yes
Gangway	yes
Anchor	yes
Anchor chain	yes
Windlass	Motor of Lewmar V5 replaced
Life raft	2020
Life raft (pers)	12
Extra info	230V sockets and 12V USB sockets throughout the boat

RIGGING

Rigging	Cutter with furling genoa and staysail
Standing rigging	Rod Installed in 2022 by Navtec
Material mast	aluminium Painted in 2022 with pulleys and blocks replaced
Mainsail	New 2020
Genoa	New 2022 (115%)
Genoa furler	Furlex 500
Staysail	yes
Staysail furler	yes
Backstay adjuster	hydraulic Revised 2025
Boomvang	hydraulic Serviced (2025)
Primary sheet winch	Electric 3 X Harken 980.3 and 1 X 60.2
Secondary sheet winch	Manual 2 X Harken 48 and 2 X 60.2
Halyard winches	Manual 2 X Harken 53 and 2 X 60.2 on deck close to mast



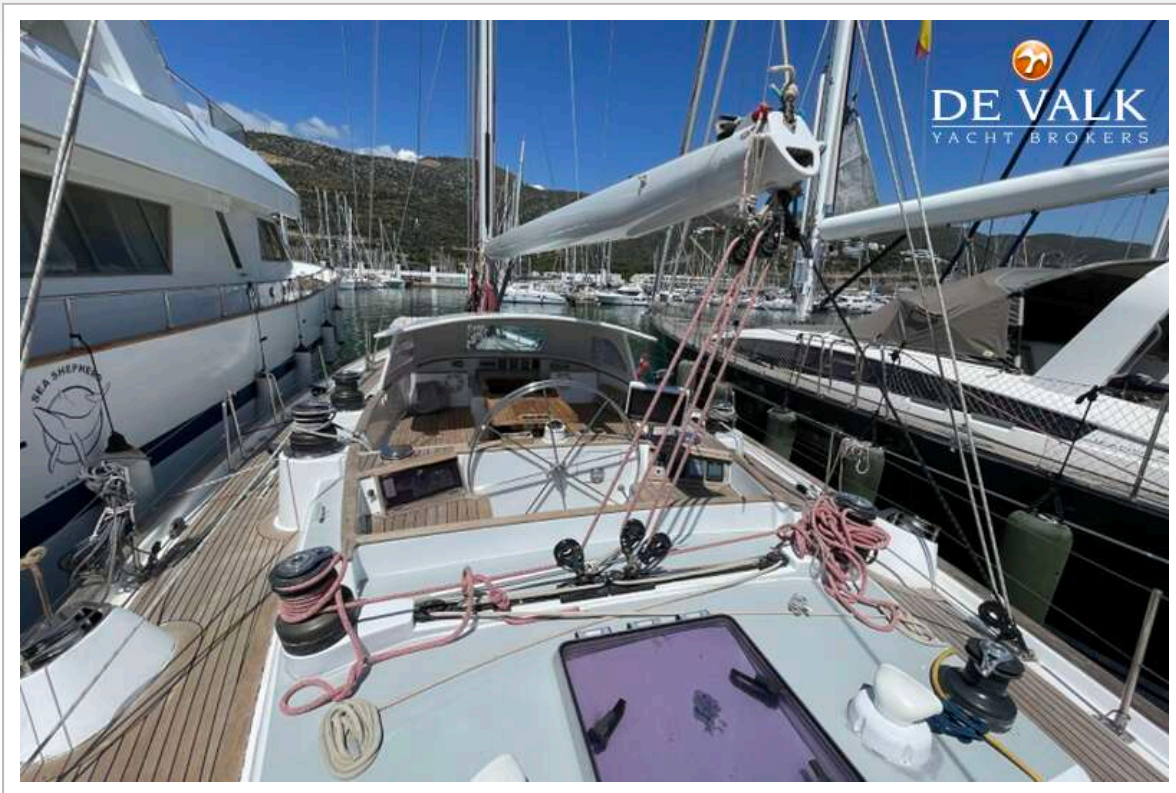
SWAN PROTOTYPE GERMAN FRERS 651



SWAN PROTOTYPE GERMAN FRERS 651



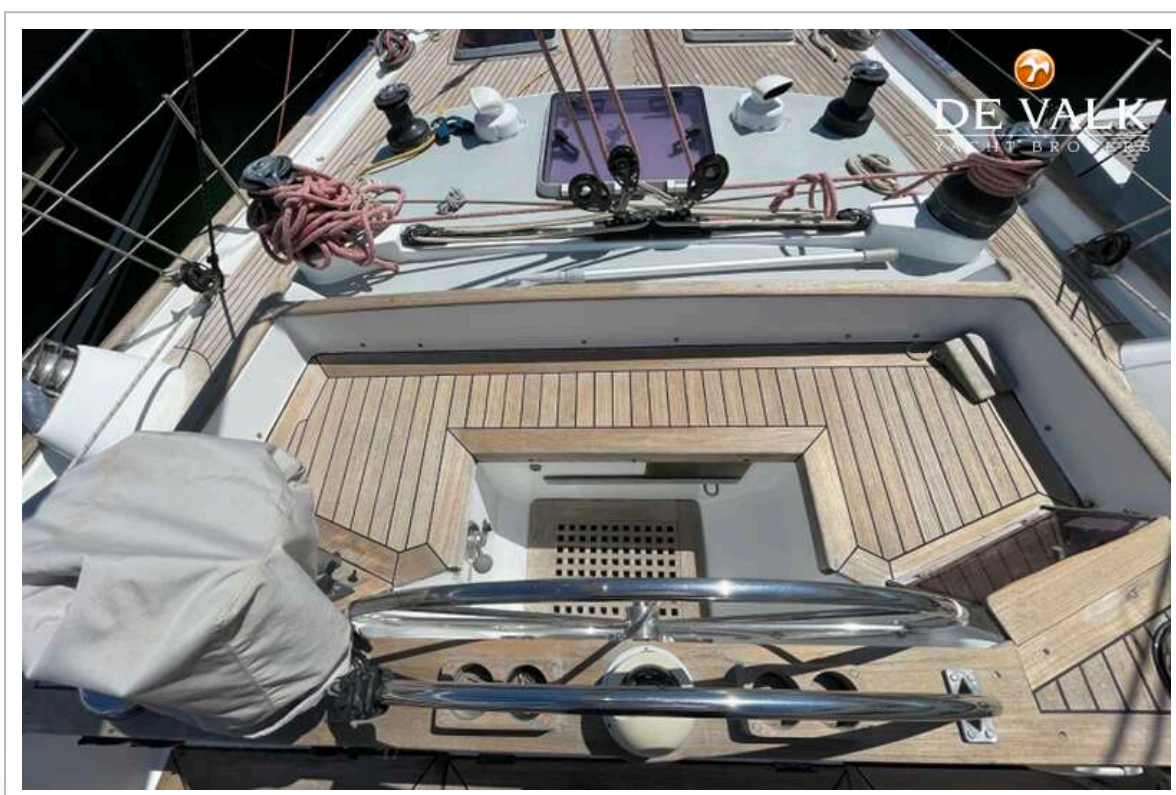
SWAN PROTOTYPE GERMAN FRERS 651



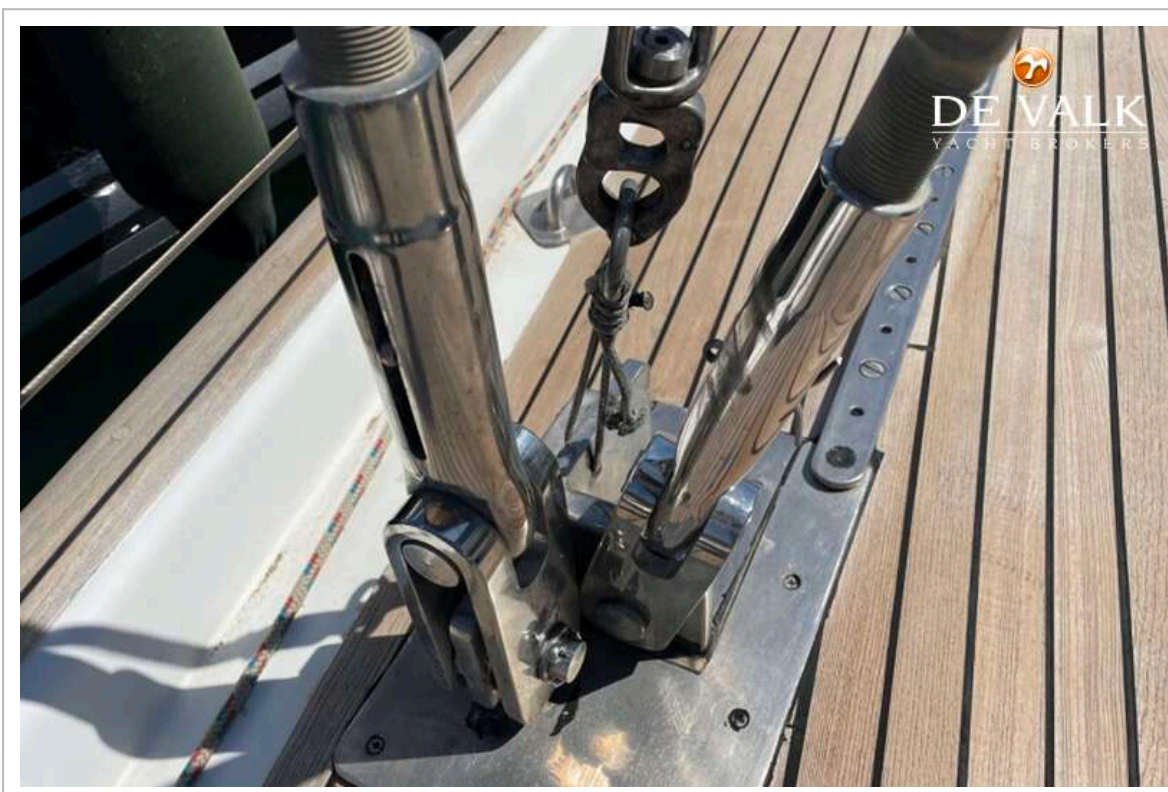
SWAN PROTOTYPE GERMAN FRERS 651



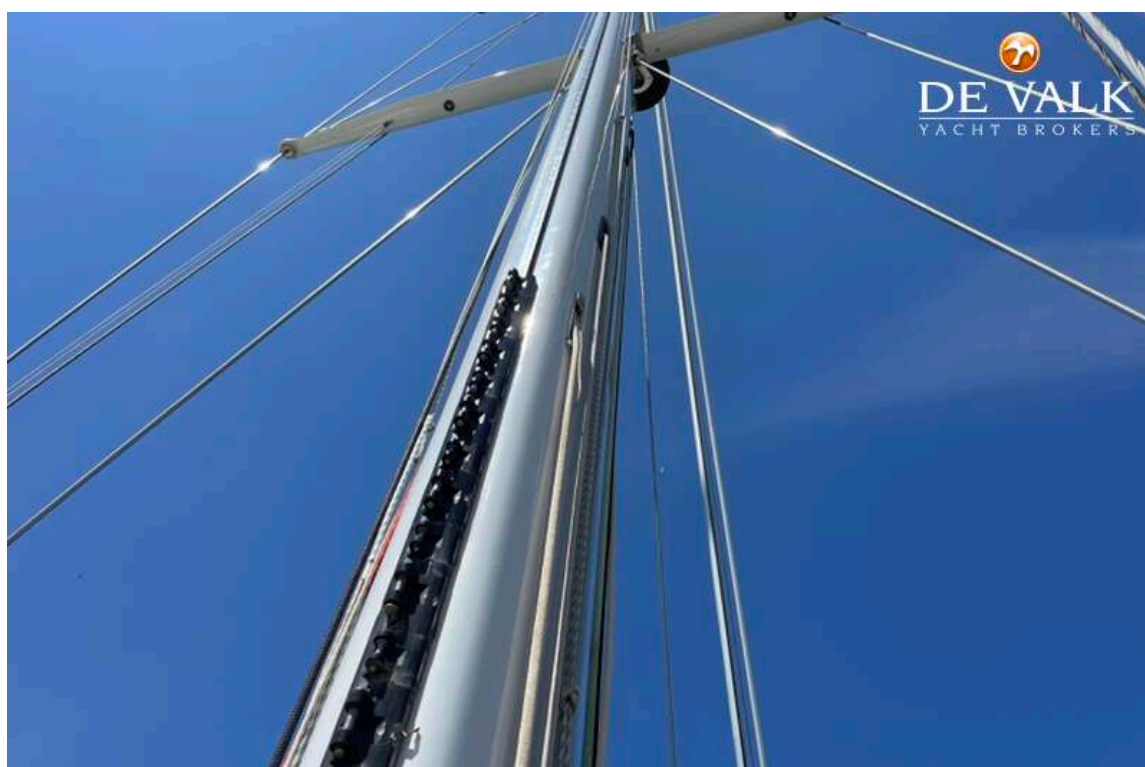
SWAN PROTOTYPE GERMAN FRERS 651



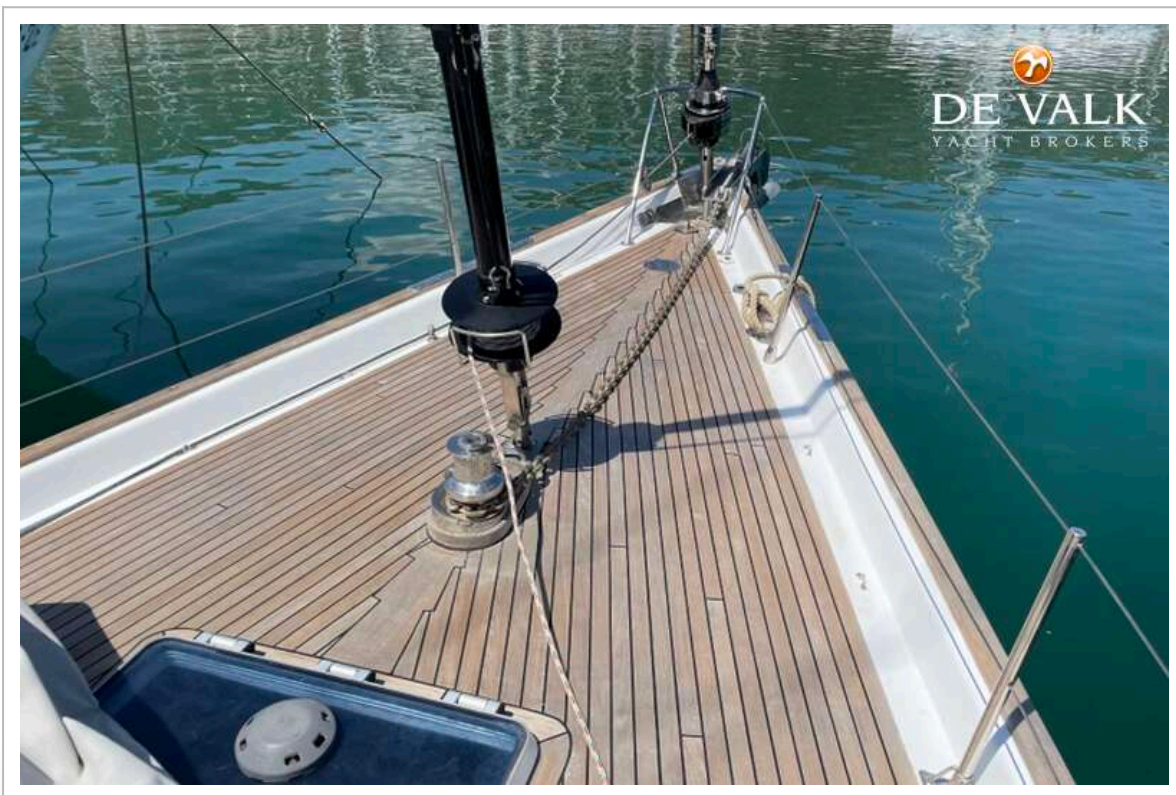
SWAN PROTOTYPE GERMAN FRERS 651



SWAN PROTOTYPE GERMAN FRERS 651



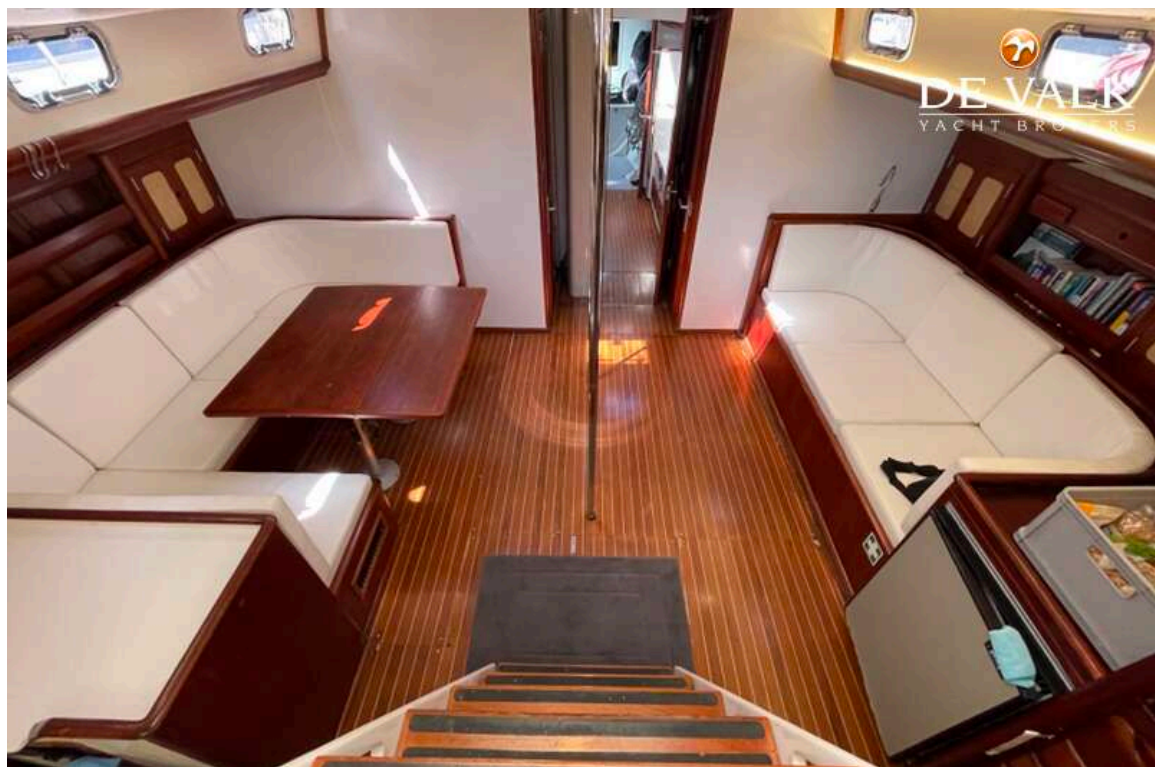
SWAN PROTOTYPE GERMAN FRERS 651



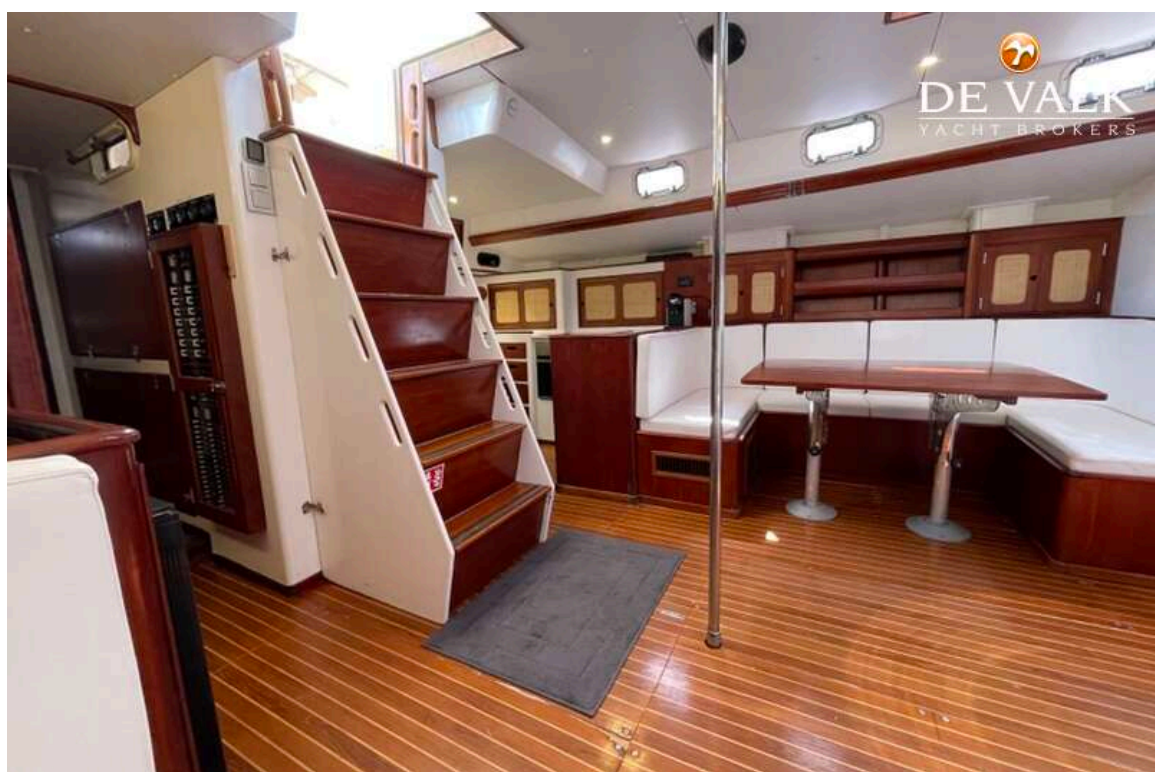
SWAN PROTOTYPE GERMAN FRERS 651



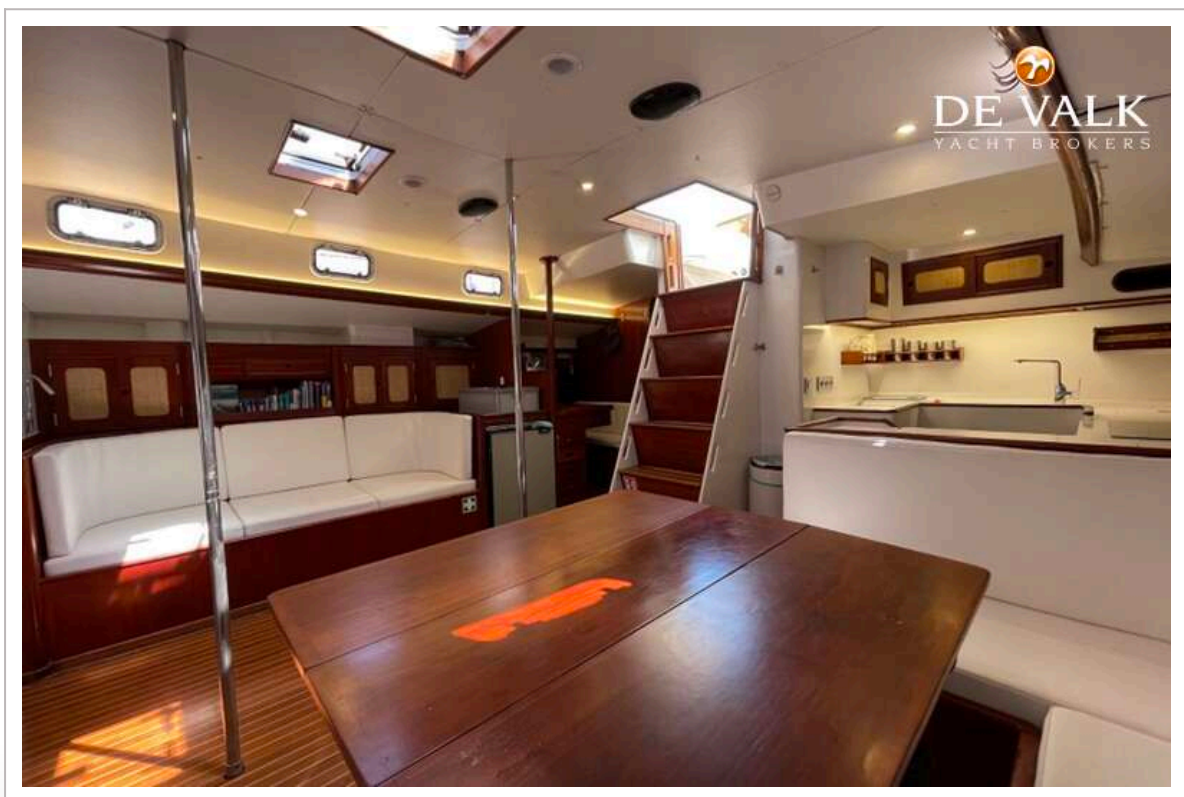
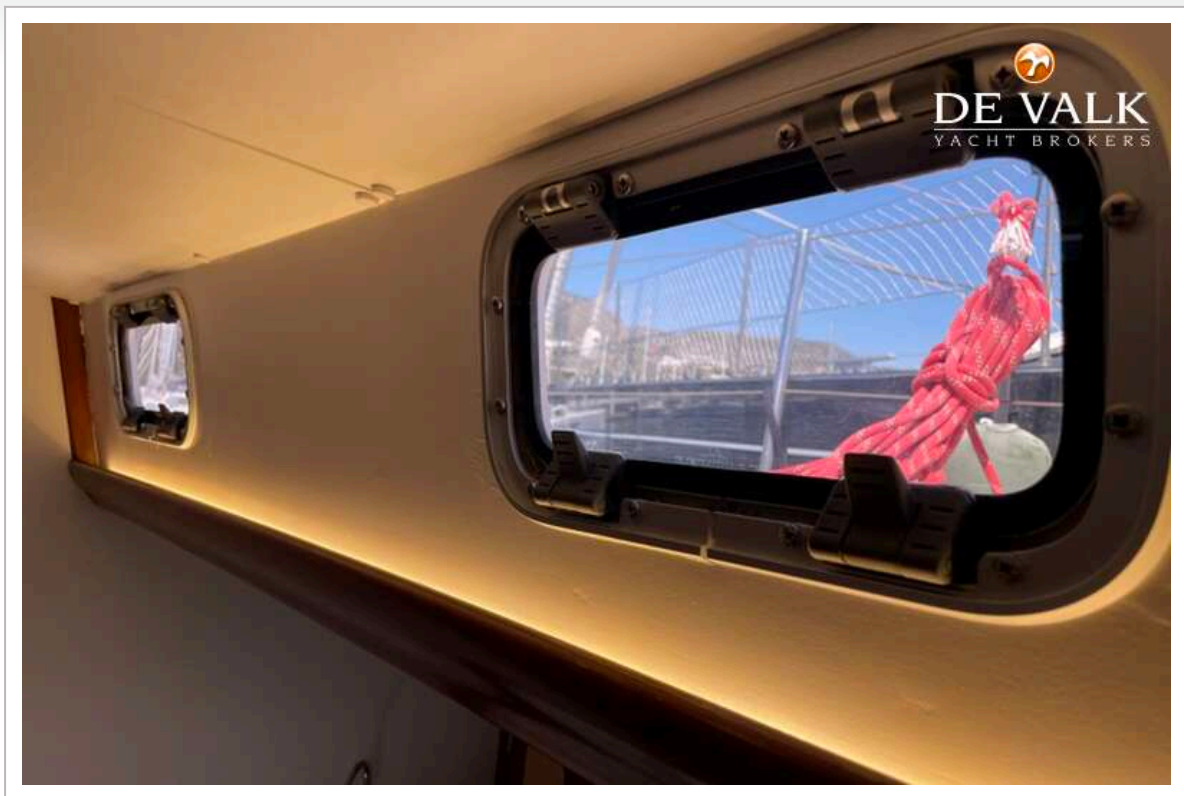
SWAN PROTOTYPE GERMAN FRERS 651



SWAN PROTOTYPE GERMAN FRERS 651



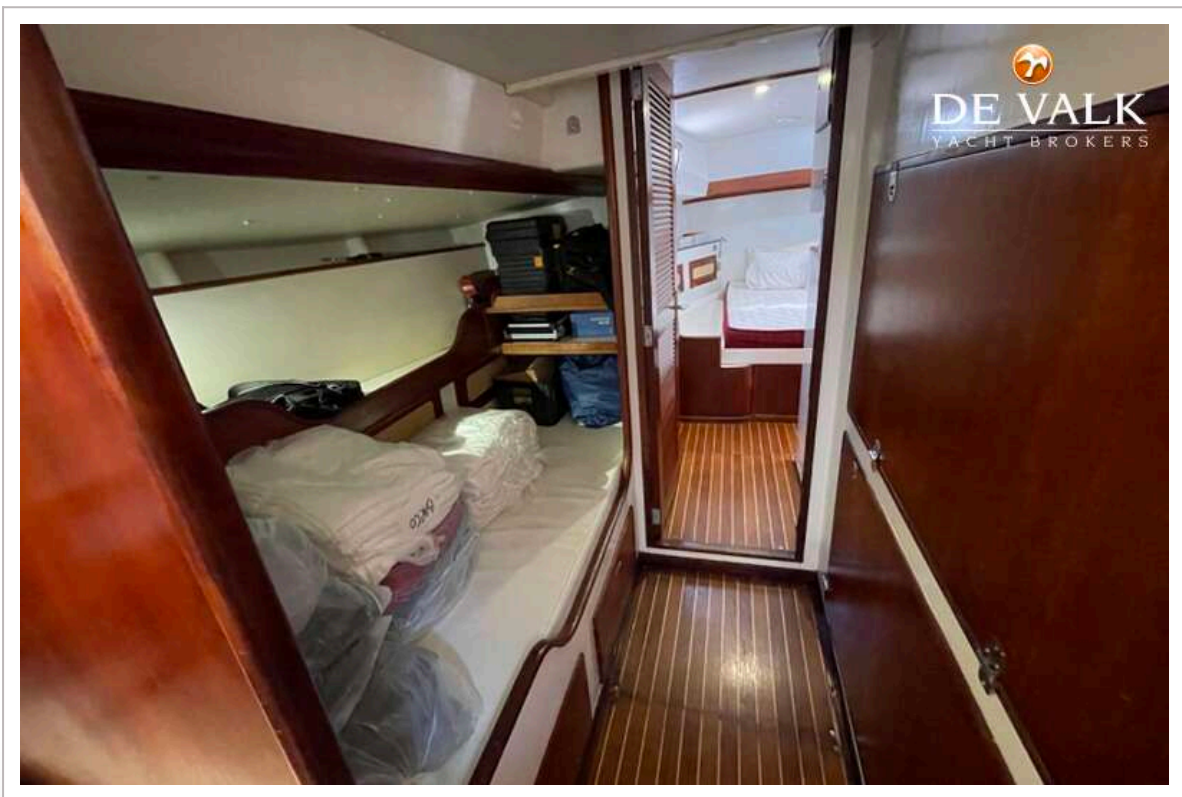
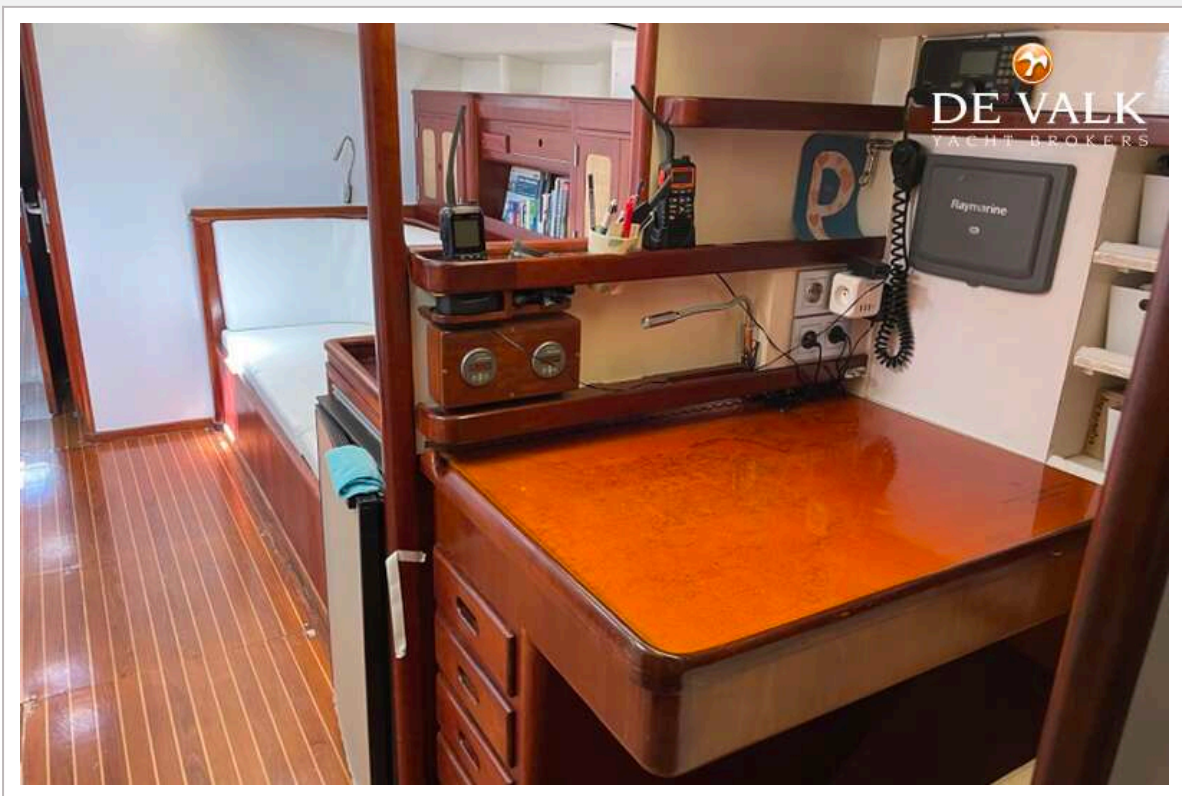
SWAN PROTOTYPE GERMAN FRERS 651



SWAN PROTOTYPE GERMAN FRERS 651



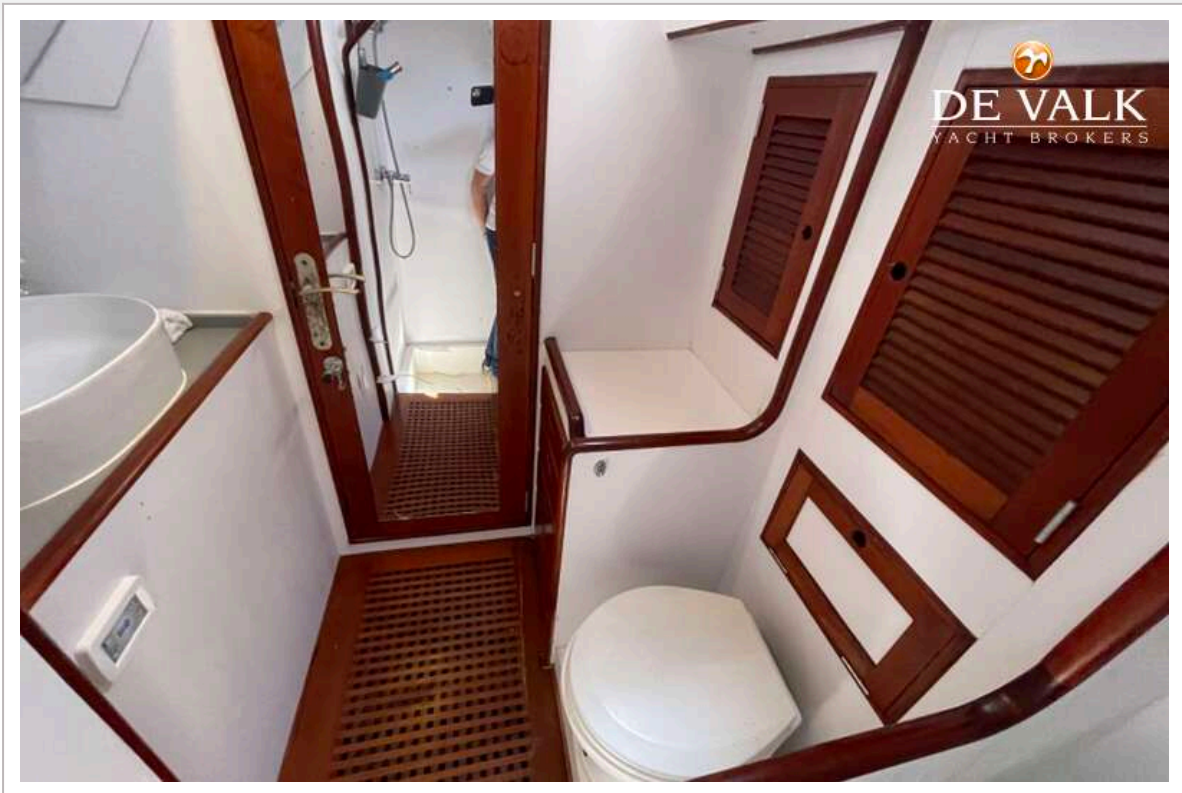
SWAN PROTOTYPE GERMAN FRERS 651



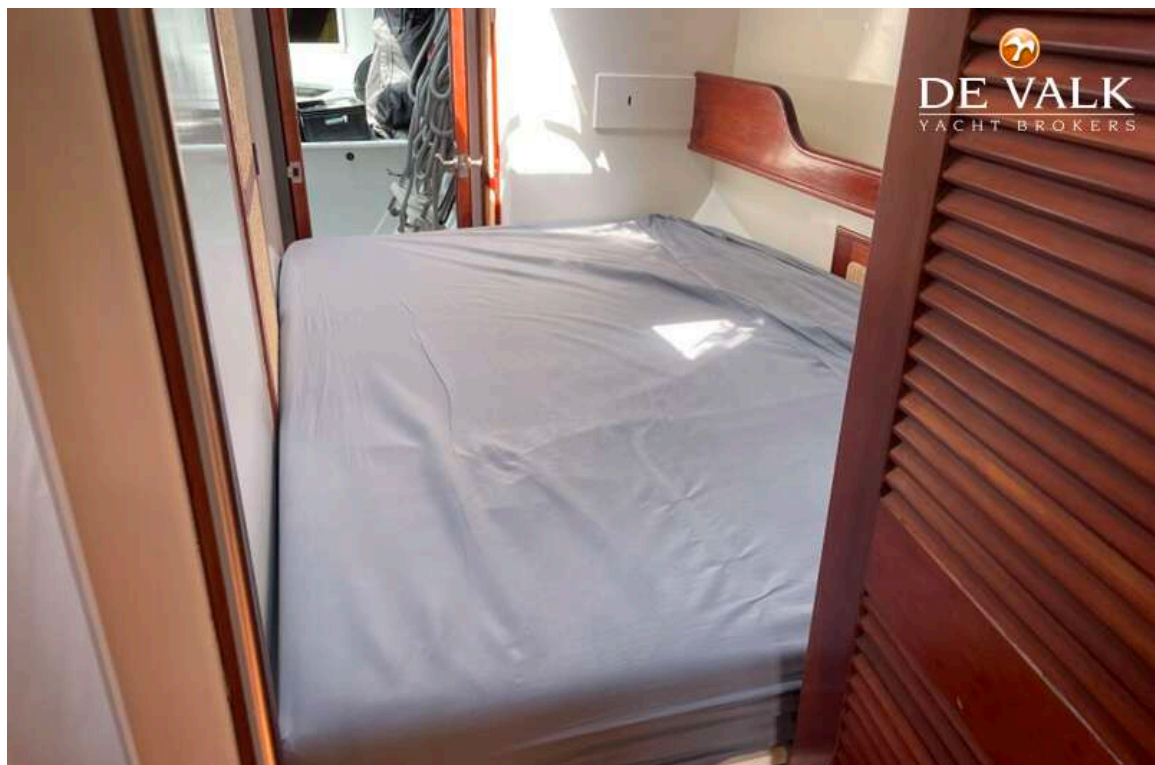
SWAN PROTOTYPE GERMAN FRERS 651



SWAN PROTOTYPE GERMAN FRERS 651



SWAN PROTOTYPE GERMAN FRERS 651



SWAN PROTOTYPE GERMAN FRERS 651

