



DE VALK  
YACHT BROKERS



PACIFIC PRESTIGE 200



DE VALK  
YACHT BROKERS

# PACIFIC PRESTIGE 200

## BROKER'S COMMENTS

The Pacific Prestige 200, a remarkable creation of Dutch engineering, exemplifies unparalleled craftsmanship and is meticulously designed for extended oceanic voyages. Powered by Heavy-Duty Volvo D9-425 engine, this Pacific Prestige 200 combines exceptional performance with durability, featuring fins stabilizers and hydraulic bow and stern thrusters. The engine is down-rated for longevity, with an impressive lifespan exceeding 50,000 hours.

*Valerio Biondi*

## SPECIFICATIONS

<b>Dimensions</b>	20.40 x 5.60 x 1.65 (m)	<b>Builder</b>	Pacific
<b>Built</b>	2008	<b>Cabins</b>	3
<b>Material</b>	Steel	<b>Berths</b>	6
<b>Engine(s)</b>	2 x VOLVO PENTA D9-6 cylinder diesel	<b>Hp/Kw</b>	2 x 425.00 (hp), 312.80 (kw)
<b>Asking price</b>	€ 650.000 (VAT Paid)	<b>Lying</b>	contact Antibes

## CONTACT

<b>Sales office</b>	De Valk Antibes	<b>Telephone</b>	+33 492 91 0202
<b>Address</b>	2, Avenue de Verdun 06600 Antibes France	<b>E-mail</b>	antibes@devalk.nl

## DISCLAIMER

These particulars are given in good faith as supplied but cannot be guaranteed.



# PACIFIC PRESTIGE 200

## GENERAL

Model	PACIFIC PRESTIGE 200
Type	motor yacht
LOA (m)	20,40
Beam (m)	5,60
Draft (m)	1,65
Year built	2008
Builder	Pacific
Country	Italy
Displacement (t)	55
Hull material	steel
Hull colour	beige Painted 2023
Superstructure material	steel
Deck material	steel
Fuel tank (litre)	6200 L
Freshwater tank (litre)	1700 L
Blackwater tank (litre)	yes
Greywater tank (litre)	yes

## ACCOMMODATION

Cabins	3
Berths	6
Crew cabin	1
Crew berths	1
Interior	mahogany
Floor	Alcantara
Deck saloon	In classic design
Saloon	With curtains from 2024
Galley	De Longhi 4 Burner Induction
Oven	Miele
Hot water system	yes



# PACIFIC PRESTIGE 200

Dishwasher	Miele
Owners cabin	yes
Wardrobe	yes
Bathroom	en suite
Toilet system	electric
Shower	yes
Jacuzzi	6 person Jacuzzi on forward deck - 2022
Guest cabin 1	yes
Wardrobe	yes
Bathroom	en suite
Toilet system	electric
Shower	yes
Guest cabin 2	yes
Wardrobe	yes
Bathroom	en suite
Toilet system	electric
Shower	yes
Washing machine/dryer combi	yes

## MACHINERY

No of engines	2
Make	VOLVO PENTA
Type	D9-6 cylinder
HP	425
kW	312.80
Fuel	diesel
Year installed	2008
Maximum speed (kn)	12
Cruising speed (kn)	10
Engine hours	2286
Drive	shaft



# PACIFIC PRESTIGE 200

<b>Bowthruster</b>	hydraulic
<b>Sternthruster</b>	hydraulic
<b>Exhaust</b>	yes
<b>Propeller blades</b>	5 blade bronze
<b>Electric bilge pump</b>	24 DC
<b>Generator</b>	Mastervolt Whisper 25 Ultra 25Kw
<b>Running hours generator</b>	4550
<b>Batteries</b>	From 2023
<b>Start battery</b>	From 2023
<b>Service battery</b>	From 2023
<b>Generator battery</b>	From 2023
<b>Battery charger</b>	Mastervolt
<b>Shorepower</b>	yes
<b>Watermaker</b>	180 L/h - 2023
<b>Stabilizers</b>	Vetus electro hydraulic

## NAVIGATION

<b>Compass</b>	Raymarine
<b>Depth sounder</b>	Raymarine
<b>Log</b>	Raymarine
<b>Windset</b>	Raymarine
<b>VHF</b>	Raymarine
<b>Autopilot</b>	Raymarine
<b>Radar</b>	Raymarine
<b>GPS</b>	Raymarine
<b>Plotter</b>	Raymarine
<b>EPIRB</b>	yes

## EQUIPMENT

<b>Sun awning</b>	yes
<b>Cockpit cushions</b>	yes



# PACIFIC PRESTIGE 200

Cockpit table	yes
Cockpit chairs	yes
Gangway	Besenzoni electro hydraulic foldable
Deck shower	yes
Anchor chain	120
Windlass	Lofrans
Dinghy	yes
Life raft	yes
TV	In all cabins
Surround Sound System	yes
Speakers in salon	yes
Speakers in cabin	yes



# PACIFIC PRESTIGE 200



# PACIFIC PRESTIGE 200

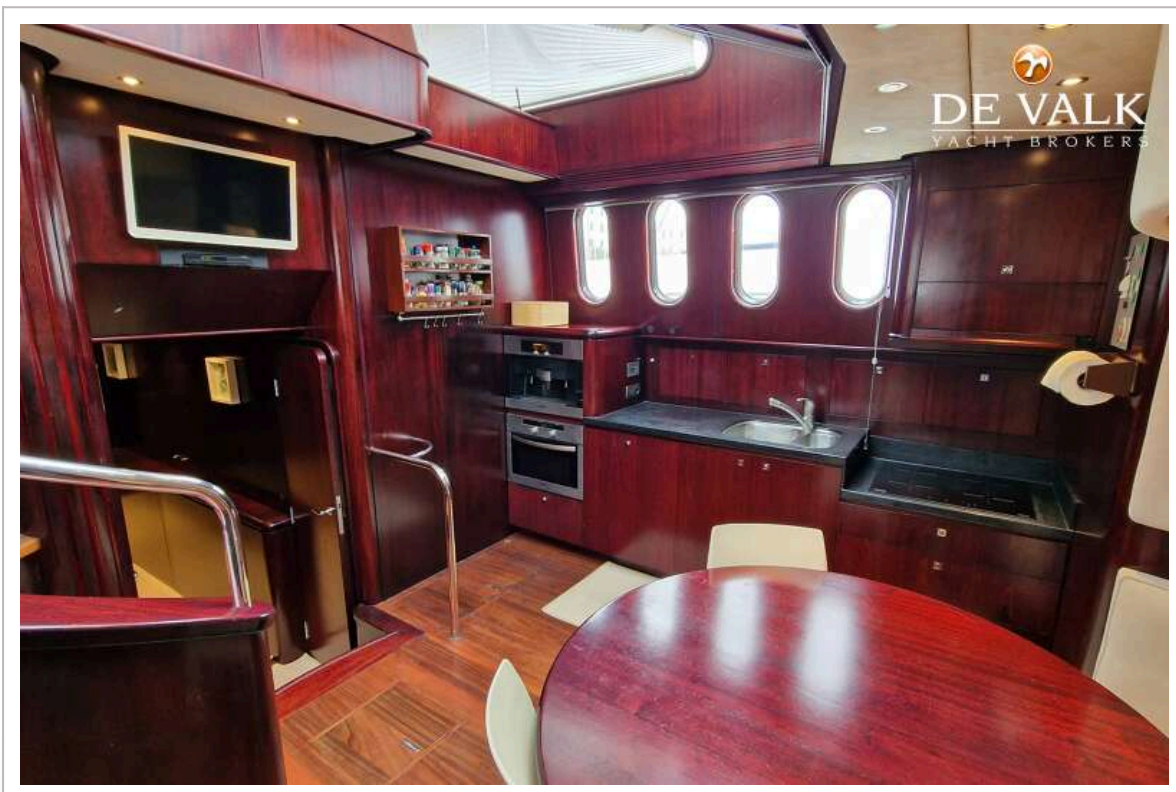




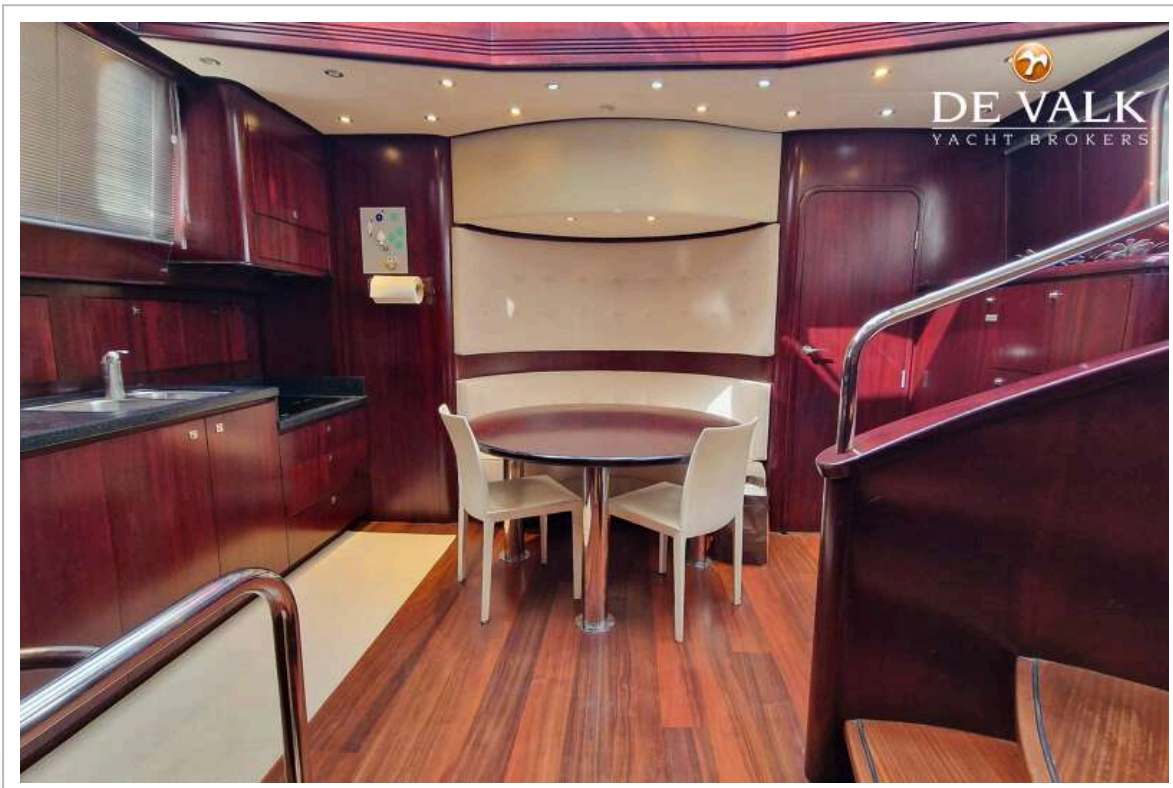
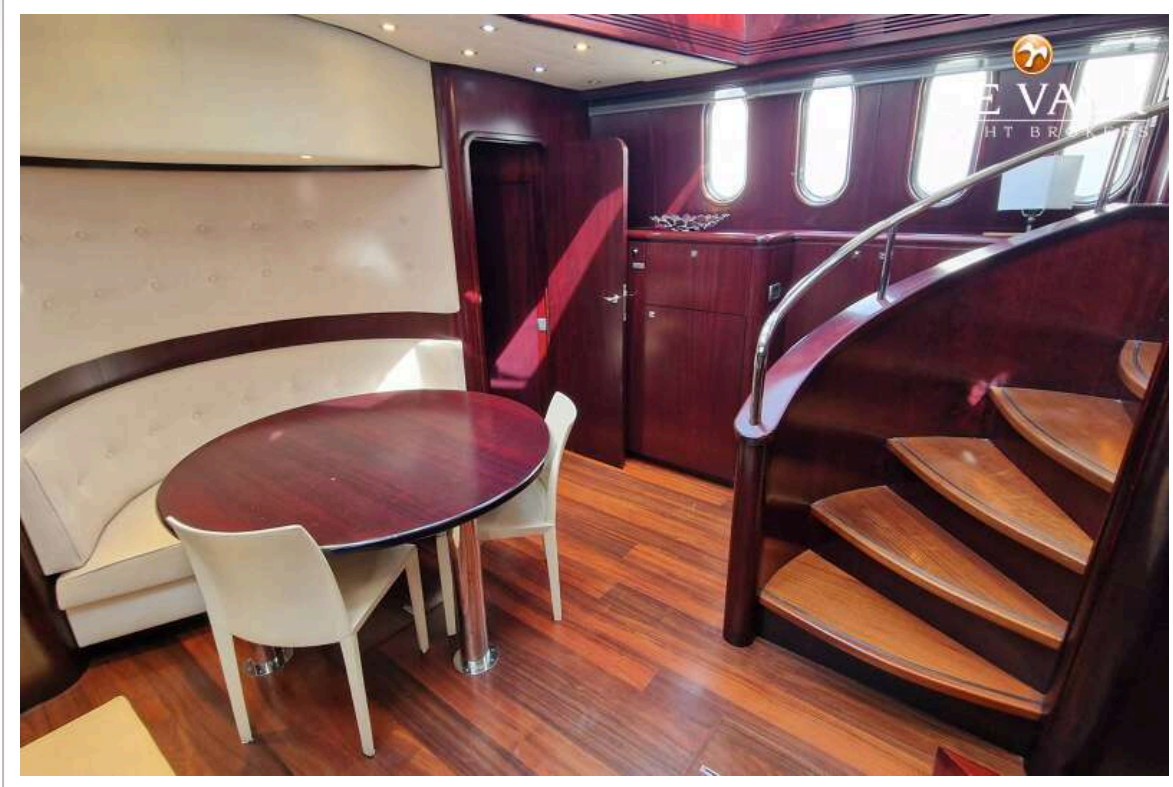
# PACIFIC PRESTIGE 200



# PACIFIC PRESTIGE 200



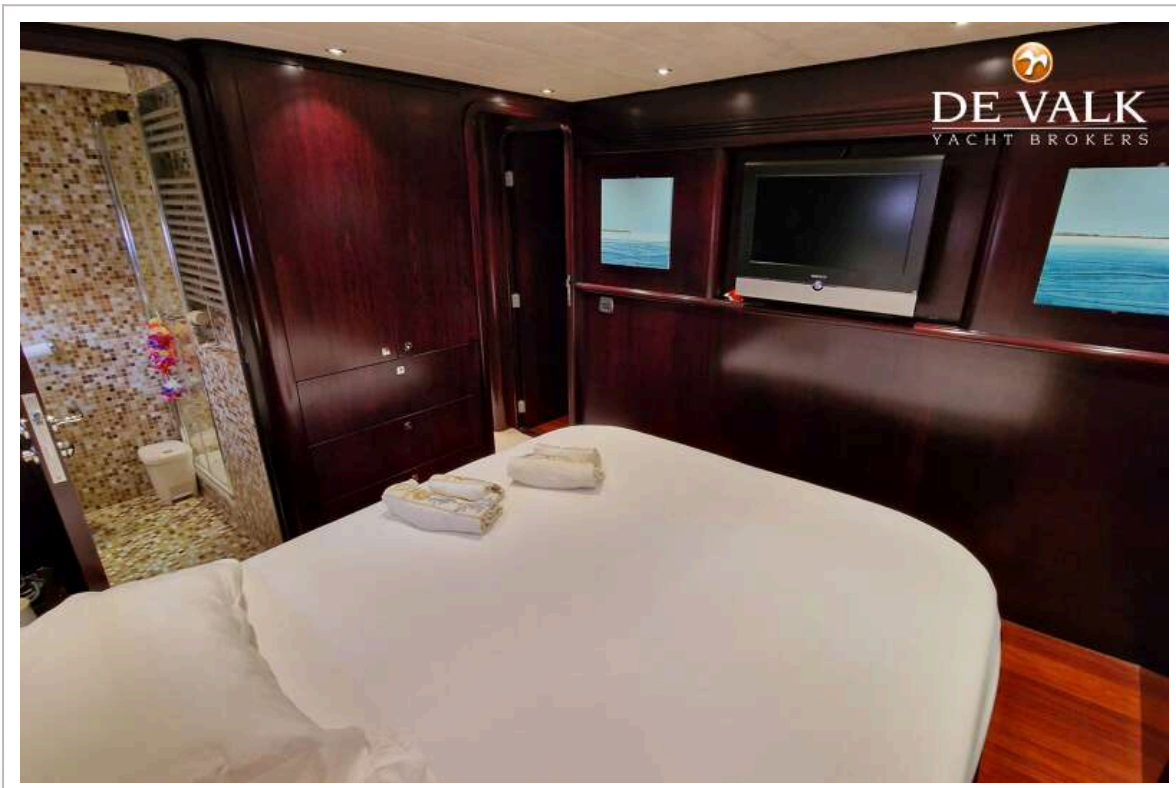
# PACIFIC PRESTIGE 200



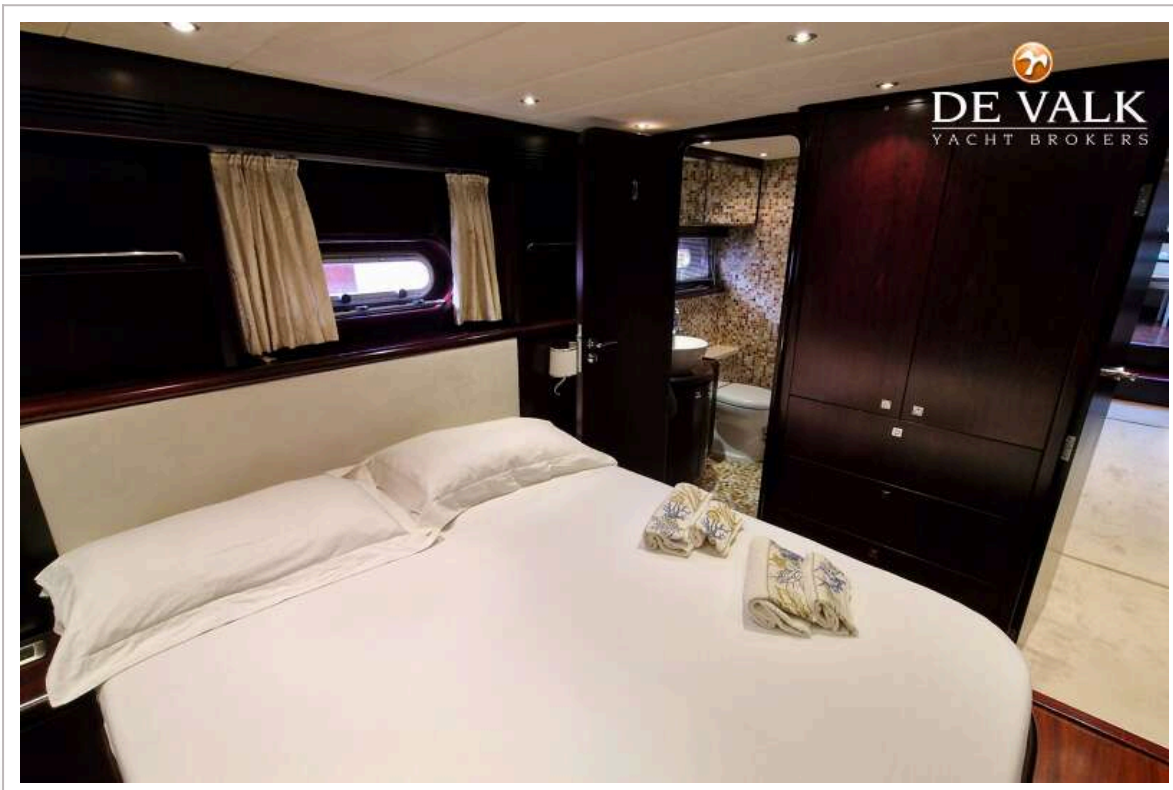
# PACIFIC PRESTIGE 200



# PACIFIC PRESTIGE 200



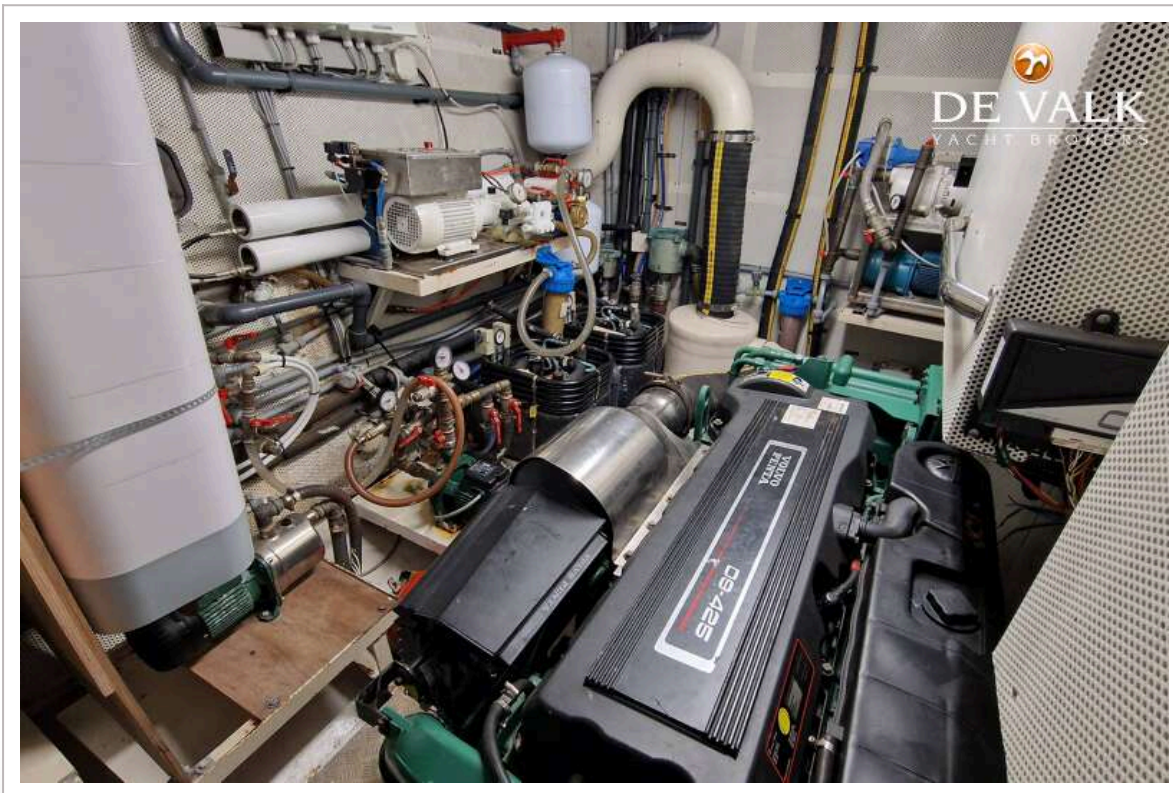
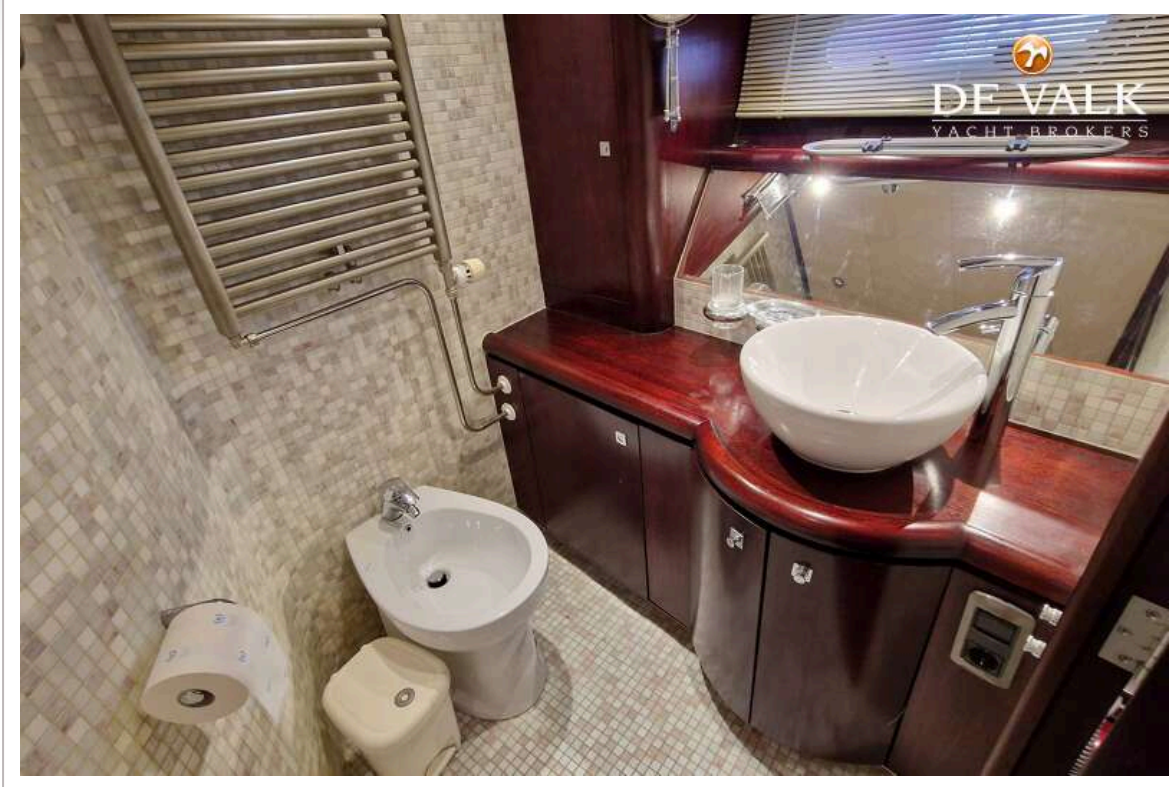
# PACIFIC PRESTIGE 200



# PACIFIC PRESTIGE 200



# PACIFIC PRESTIGE 200





# PACIFIC PRESTIGE 200

