



DE VALK
YACHT BROKERS



ELAN IMPRESSION 45.1



DE VALK
YACHT BROKERS

ELAN IMPRESSION 45.1

BROKER'S COMMENTS

Elan Impression 45.1, built in 2022, a modern and spacious cruiser that combines comfort, performance, and style. This yacht is in excellent condition it was part of a charter fleet but has been exceptionally well maintained and carefully taken care of, ensuring reliability and a fresh, like-new feel. With its innovative design, the Elan 45.1 offers a bright and airy interior, generous living spaces, and superior sailing performance. Perfect for family cruising or charter investment, it balances easy handling with modern comfort.

Filip Mimica

SPECIFICATIONS

Dimensions	13.51 x 4.18 x 1.90 (m)	Builder	Elan
Built	2022	Cabins	3
Material	GRP	Berths	8
Engine(s)	1 x Volvo D2-50F diesel	Hp/Kw	50.00 (hp), 36.80 (kw)
Asking price	€ 189.000 (VAT Not paid)	Lying	Croatia

CONTACT

Sales office	De Valk Dalmatia	Telephone	0031 653 299 244
Address	Ul. Velimira Skorpika 22000 Sibenik HR	E-mail	dalmatia@devalk.nl

DISCLAIMER

These particulars are given in good faith as supplied but cannot be guaranteed.



ELAN IMPRESSION 45.1

GENERAL

Model	ELAN IMPRESSION 45.1
Type	sailing yacht
LOA (m)	13,51
LWL (m)	11,44
Beam (m)	4,18
Draft (m)	1,90
Year built	2022
Launched	2022
Builder	Elan
Country	Slovenia
Displacement (t)	10,4
CE norm	C
Hull material	GRP
Hull colour	WHITE
Keel type	FIN
Antifouling (year)	2025
Fuel tank (litre)	215L
Level indicator (fuel tank)	yes
Freshwater tank (litre)	572L
Level indicator (freshwater)	yes
Blackwater tank (litre)	100L
Wheel steering	DUAL RUDDERS
Emergency tiller	yes

ACCOMMODATION

Cabins	3
Berths	8
Saloon	yes
Heating	Webasto Air top EVO 55 heating
Air-conditioning	Inverter air conditioning system, 1 unit 2 outlets (saloon and f



ELAN IMPRESSION 45.1

Navigation center	yes
Dining room	yes
Galley	yes
Sink	yes
Cooker	yes
Oven	yes
Gas alarm	yes
Fridge	200l
Freezer	yes
Hot water system	yes
Water pressure system	yes
Hot water tap	yes
Wardrobe	yes
Bathroom	yes
Toilet system	yes
Shower	yes
Guest cabin 1	yes
Wardrobe	yes
Bathroom	yes
Toilet system	yes
Shower	yes
Guest cabin 2	yes
Bed length (m)	yes
Wardrobe	yes
Bathroom	yes
Toilet system	yes
Shower	yes
Guest cabin 3	yes
Bed length (m)	yes
Wardrobe	yes
Bathroom	yes
Toilet system	yes



Shower yes

MACHINERY

No of engines 1
Make Volvo
Type D2-50F
HP 50
kW 36.80
Fuel diesel
Drive sail-drive
Bowthruster With two additional batteries and battery charger
Propeller type 3 blade folding propeller Flex-o-fold
Manual bilge pump yes
Electric bilge pump yes
Bilge alarm yes
Generator Generator Fisher Panda 5000 Neo
Running hours generator yes
Batteries yes
Start battery yes
Service battery yes
Generator battery yes
Bowthruster battery yes
Battery monitor yes
Battery charger yes
Inverter yes
Shorepower yes
Extra info Additional 12V AGM battery, 95Ah

NAVIGATION

Compass yes
Depth sounder yes



Depth sounder/log	yes
Log	yes
Windset	yes
VHF	yes
Autopilot	yes
GPS	yes
Plotter	yes
Navigation lights	yes
Searchlight	yes

EQUIPMENT

Sprayhood	yes
Cockpit cover	yes
Bimini	yes
Cockpit cushions	yes
Cockpit table	yes
Bathing platform	TEAK
Boarding ladder	yes
Gangway	yes
Deck shower	yes
Anchor	DELTA
Anchor chain	50M
Windlass	yes
Dinghy	yes
Outboard	yes
TV	yes
Radio	Fusion MS-RA210
Cockpit speakers	FM-F65RV
Speakers in salon	FM-F65RV
Extra info	Cockpit fridge and BBQ, AFT IN COCKPIT



RIGGING

Rigging	yes
Standing rigging	yes
Mainsail	yes
Genoa	yes
Reefing System	yes
Primary sheet winch	yes
Secondary sheet winch	yes



ELAN IMPRESSION 45.1



ELAN IMPRESSION 45.1



ELAN IMPRESSION 45.1



ELAN IMPRESSION 45.1



ELAN IMPRESSION 45.1



ELAN IMPRESSION 45.1



ELAN IMPRESSION 45.1



ELAN IMPRESSION 45.1



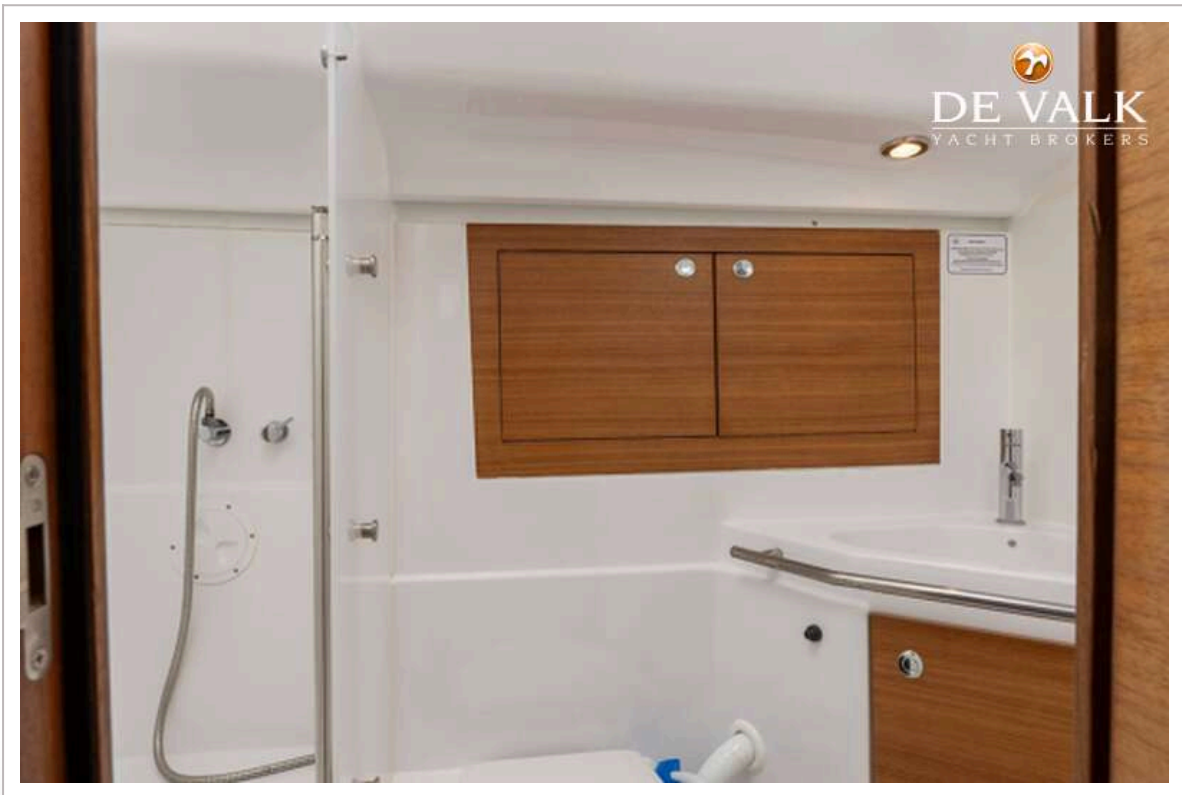
ELAN IMPRESSION 45.1



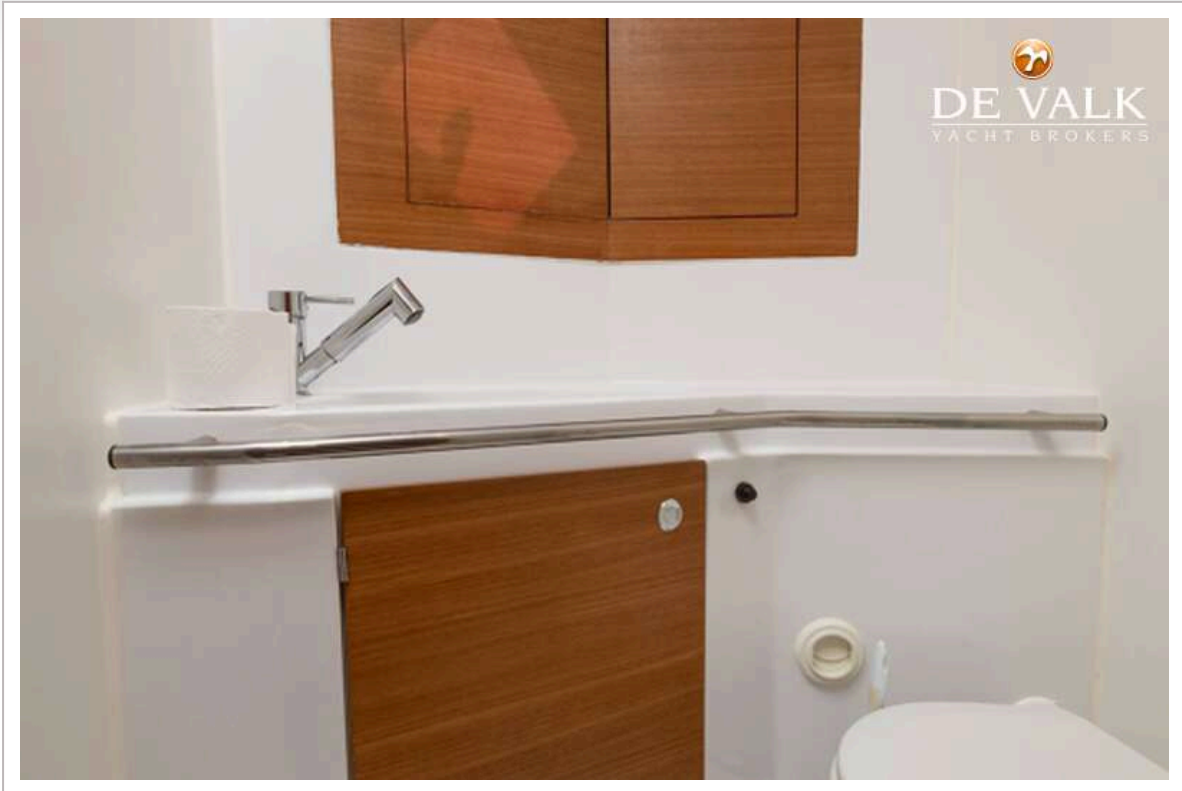
ELAN IMPRESSION 45.1



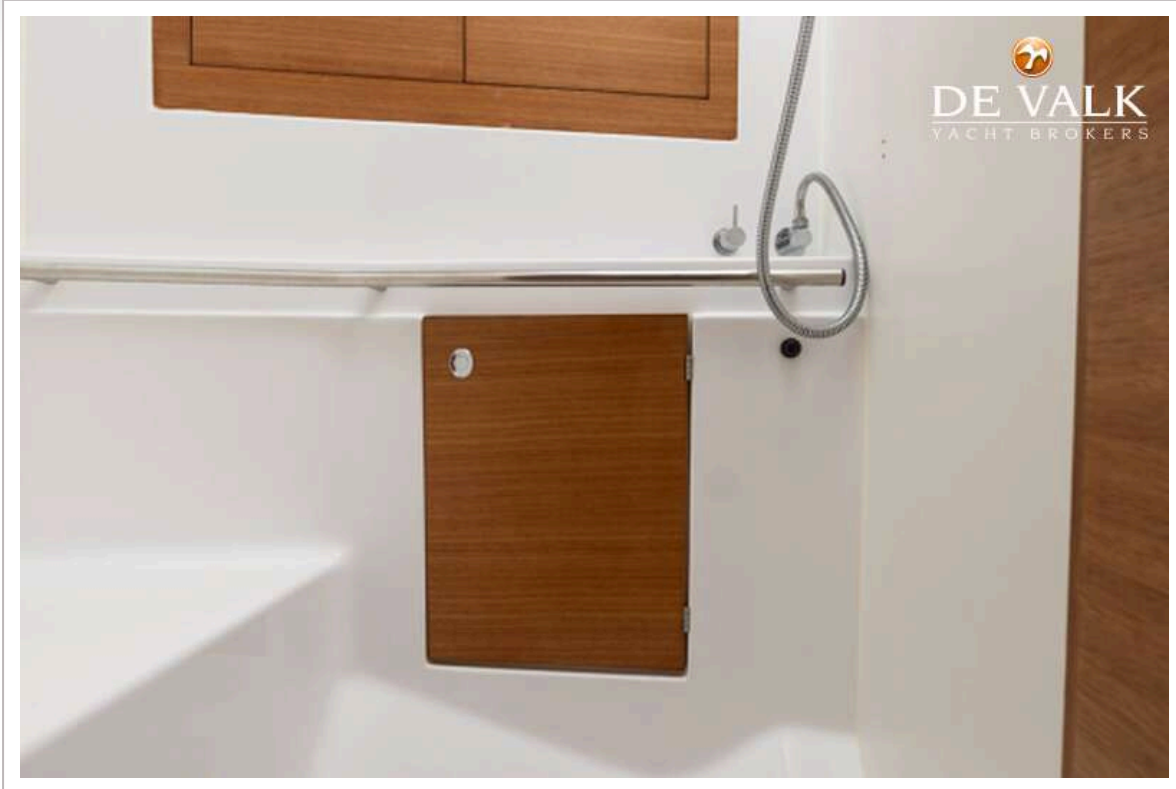
ELAN IMPRESSION 45.1



ELAN IMPRESSION 45.1



ELAN IMPRESSION 45.1



ELAN IMPRESSION 45.1

