



DE VALK  
YACHT BROKERS



## NAUTICAT 521



DE VALK  
YACHT BROKERS

# NAUTICAT 521

## BROKER'S COMMENTS

Nauticat 521 "Orn" built in 1994 By the Nauticat shipyard in Finland. Four cabins, saloon, dinette, large aftdeck, central heating makes her ideal for long range voyages and life a board. Beautiful woodwork inside, constandy maintained, ready to go! Viewing possible by appointment, ask for her current location.

*Arne Doodeman*

## SPECIFICATIONS

<b>Dimensions</b>	15.60 x 4.60 x 2.20 (m)	<b>Builder</b>	Nauticat Yachts OY
<b>Built</b>	1994	<b>Cabins</b>	4
<b>Material</b>	GRP	<b>Berths</b>	9
<b>Engine(s)</b>	1 x Ford Sabre model: 135L diesel	<b>Hp/Kw</b>	135.00 (hp), 99.36 (kw)
<b>Asking price</b>	€ 330.000 (VAT Paid)	<b>Lying</b>	at sales office

## CONTACT

<b>Sales office</b>	De Valk Monnickendam B.V.	<b>Telephone</b>	+31 (0)299 65 63 50
<b>Address</b>	Hoogedijk 6 1145 PM Katwoude NL	<b>E-mail</b>	monnickendam@devalk.nl

## DISCLAIMER

These particulars are given in good faith as supplied but cannot be guaranteed.



## GENERAL

<b>Model</b>	NAUTICAT 521
<b>Type</b>	sailing yacht
<b>LOA (m)</b>	15,60
<b>Beam (m)</b>	4,60
<b>Draft (m)</b>	2,20
<b>Year built</b>	1994
<b>Builder</b>	Nauticat Yachts OY
<b>Country</b>	Finland
<b>Designer</b>	Sparkman & Stephens
<b>Ballast (tonnes)</b>	lead in GRP   7.6 tonnes
<b>CE norm</b>	A
<b>Hull material</b>	GRP
<b>Hull colour</b>	blue
<b>Hull shape</b>	round-bilged
<b>Keel type</b>	fin keel
<b>Superstructure material</b>	GRP
<b>Deck material</b>	GRP
<b>Deck finish</b>	teak
<b>Superstructure deck finish</b>	teak
<b>Cockpit deck finish</b>	teak   aftdeck
<b>Dorades</b>	yes
<b>Window frame</b>	aluminium
<b>Window material</b>	tempered glass
<b>Deckhatch</b>	Several deckhatches with aluminium frame
<b>Portholes</b>	yes
<b>Fuel tank (litre)</b>	stainless steel   Approx. 1700 litre diesel in two tanks
<b>Level indicator (fuel tank)</b>	VDO
<b>Freshwater tank (litre)</b>	stainless steel   Approx. 1800 litre in three tanks
<b>Level indicator (freshwater)</b>	VDO
<b>Blackwater tank (litre)</b>	stainless steel   Approx. 240 litre



Wheel steering	hydraulic
Inside helm position	yes
Outside helm position	yes

## ACCOMMODATION

Cabins	4
Berths	9
Interior	teak
Floor	Wooden floor and carpet
Aft deck	yes
Deck saloon	yes
Saloon	yes
Heating	central heating   Kabola HR300
Heating 2	diesel ducted hot air   Webasto 5500 EVO (02-2023)
Aft Cabin	yes
Dining room	yes
Dinette	yes
Opening door to aft deck	yes
Galley	yes
Countertop	corian   White coloured corian worktop
Sink	Double sink
Cooker	Husquarna Profinett 2 x gas and 2 x induction
Extractor	Husquarna build-in between the gas and induction plates
Microwave/oven combi	Philips   Whirlpool Combimaster M920
Fridge	3 x Isothemp fridge
Hot water system	220V + engine   50 litre Isothemp Basic Boiler
Water pressure system	electrical 2 x Par-Max HD4 freshwater pumps
Dishwasher	Miele
Owners cabin	French bed   In the stern
Wardrobe	hanging/drawers/shelves
Bathroom	en suite



<b>Toilet</b>	Jabsco
<b>Toilet system</b>	manual   (new toilet hoses 04-2024)
<b>Wash basin</b>	yes
<b>Shower</b>	yes
<b>Guest cabin 1</b>	bunk bed
<b>Wardrobe</b>	shelves
<b>Guest cabin 2</b>	bunk bed
<b>Wardrobe</b>	shelves
<b>Bathroom</b>	shared
<b>Toilet</b>	yes
<b>Toilet system</b>	electric   Vetus (2023) (new toilet hoses 04-2024)
<b>Wash basin</b>	yes
<b>Shower</b>	yes
<b>Guest cabin 3</b>	double bed + single bed   V-bed and single bed
<b>Wardrobe</b>	hanging and shelves
<b>Washing machine/dryer combi</b>	Miele WT1 Selection wash/dry (2022)

## MACHINERY

<b>No of engines</b>	1
<b>Make</b>	Ford Sabre
<b>Type</b>	Model: 135L
<b>HP</b>	135
<b>kW</b>	99.36
<b>Fuel</b>	diesel
<b>Engine cooling system</b>	freshwater heat exchanger
<b>Drive</b>	shaft
<b>Engine controls</b>	bowden cable   Morse
<b>Gearbox</b>	Velvet drive, model: 10-18-008
<b>Bowthruster</b>	electric   Sidepower
<b>Exhaust</b>	watercooled
<b>Thrust bearing</b>	Vetus size 10 flexible coupling



<b>Propeller type</b>	feathering
<b>Propeller blades</b>	3 bladed Max-prop feathering propeller
<b>Propeller shaft material</b>	stainless steel
<b>Shaft lubrication</b>	water
<b>Manual bilge pump</b>	yes
<b>Electric bilge pump</b>	yes
<b>Generator</b>	Westerbeke generator, Mastervolt alternator 24V/75amp
<b>Running hours generator</b>	1506 hrs (11-2025)
<b>Start battery</b>	1 x Exide 240ah (2024)
<b>Service battery</b>	3 x Exide 210ah (2019)
<b>Navigation Battery</b>	1 x Varta 95ah (2024)
<b>Bowthruster battery</b>	2x Bosch 190ah for the bowthruster and windlass (2022)
<b>Battery monitor</b>	Mastervolt Battery monitor BTM-I, Mastervolt charger control
<b>Battery charger</b>	Mastervolt Chargemaster 24/20-3, Mastervolt 24/12-20
<b>Inverter</b>	Victron Pure Sinewave 12/800, Mastervolt AC Master 12/350
<b>Shorepower</b>	with cable
<b>Extra info</b>	New heat exchanger main engine 01-2024
<b>Extra info</b>	Engine room blower
<b>Extra info</b>	Separ fuel filter

## NAVIGATION

<b>Compass</b>	Suunto type D-165
<b>Depth sounder</b>	Furuno FI50 multi
<b>Log</b>	Furuno FI50 multi
<b>Windset</b>	Furuno FI50 wind, Furuno FI50 CH wind
<b>VHF</b>	Radio Ocean RO4800
<b>VHF handheld</b>	Radio Ocean P4800
<b>Autopilot</b>	Furuno Navpilot
<b>Rudder angle indicator</b>	yes
<b>Radar</b>	Furuno
<b>GPS</b>	Philips AP navigator MK9



<b>Radar/GPS/plotter</b>	Furuno Navnet 3D and Furuno MU152 monitor
<b>AIS transponder</b>	Sailor 5051 AIS sart
<b>EPIRB</b>	2024
<b>Navigation lights</b>	yes
<b>Searchlight</b>	yes
<b>Extra info</b>	Two deck Lights mounted on the mast

## EQUIPMENT

<b>Sprayhood</b>	yes
<b>Cockpit table</b>	Teak table
<b>Bathing platform</b>	Small bathing platform with teak finish
<b>Boarding ladder</b>	Stainless steel with teak steps
<b>Gangway</b>	Aluminium gangway
<b>Deck shower</b>	Warm/cold
<b>Anchor</b>	Stainless steel Ultra anchor 45KG
<b>Anchor chain</b>	Galvanized chain
<b>Windlass</b>	electrical   Lofrance
<b>Deck wash</b>	yes
<b>Outboard support</b>	Mounted on the davits
<b>Davits</b>	stainless steel Simpson davits model 400
<b>Davits controls</b>	manual
<b>Deck crane</b>	manual   Single stainless steel deck crane
<b>Sea railing</b>	Stainless steel/ wire /wooden sea railing
<b>Grab rail (superstructure)</b>	stainless steel
<b>Railing side opening gates</b>	PS / BB / stern opening gates
<b>Pushpit</b>	Stainless steel pushpit
<b>Pulpit</b>	Stainless steel pulpit
<b>Life raft</b>	container   Zodiac
<b>Life raft (pers)</b>	yes
<b>Last life raft survey</b>	11-2022
<b>Wiper</b>	3x



Window heating	yes
Horn	yes
Fenders	yes
Mooring lines	yes
TV	LG flatscreen
Radio-cd player	Pioneer DH-P88 RSII
Clock - barometer	Schatz clock and barometer
Fire extinguisher	yes
Extinguisher in engine room	yes
Extra info	Magma BBQ

## RIGGING

Rigging	yes
Standing rigging	wire
Brand mast	Seldén
Material mast	aluminium
Spreaders	3x
Mainsail	2 mainsails
Stoway mast	Selden Furlex Hydraulic in mast furling
Cutterstay	Selden Furlex hydraulic furling
Jib	2 x jib
Genoa	2x genoa
Genoa furler	Selden Furlex Hydraulic furling
Gennaker	1 x gennaker
Reefing System	main in-mast furling
Boomvang	mechanical and tackle   Selden
Spi-pole	aluminium   Selden Spi-pole
Extra info	Lewmar winches: 1 x 40, 1x7, 1 x 30 self tailing, 2 x 58 self tailing, 2 x 40 self tailing, 2 x 62 hydraulic self tailing



# NAUTICAT 521



# NAUTICAT 521



# NAUTICAT 521



# NAUTICAT 521



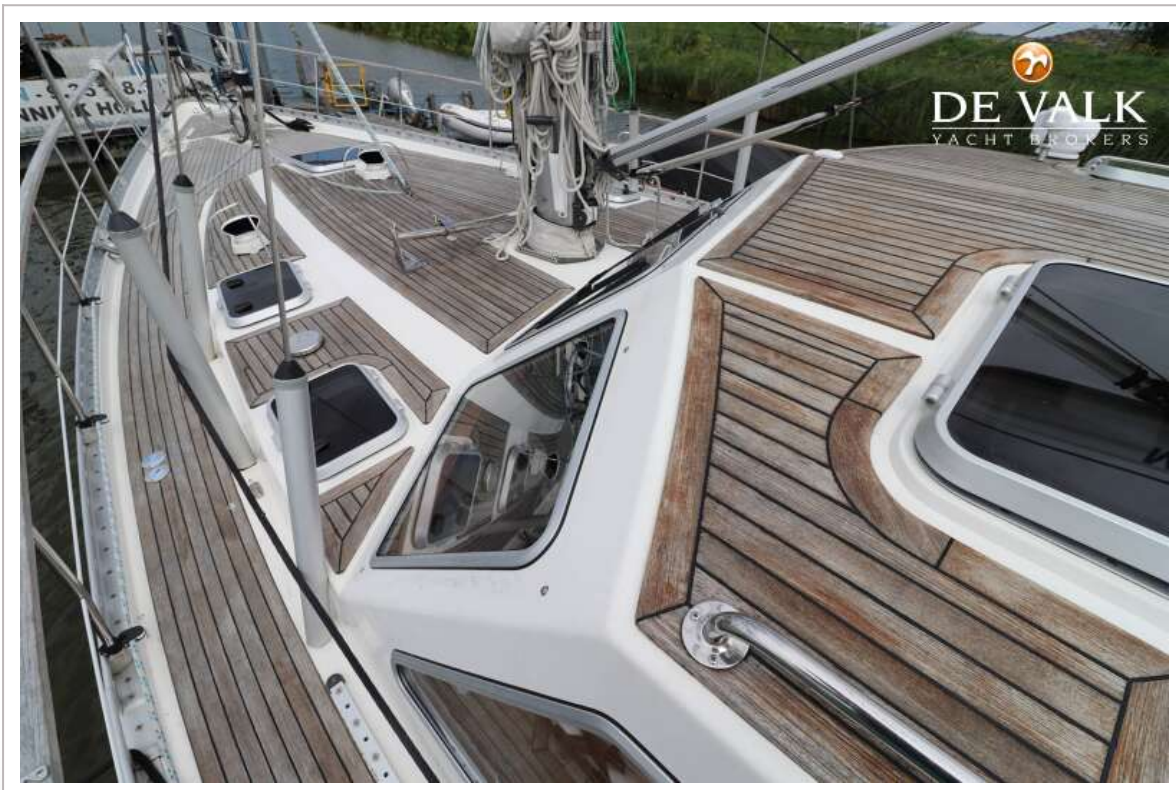
# NAUTICAT 521



# NAUTICAT 521



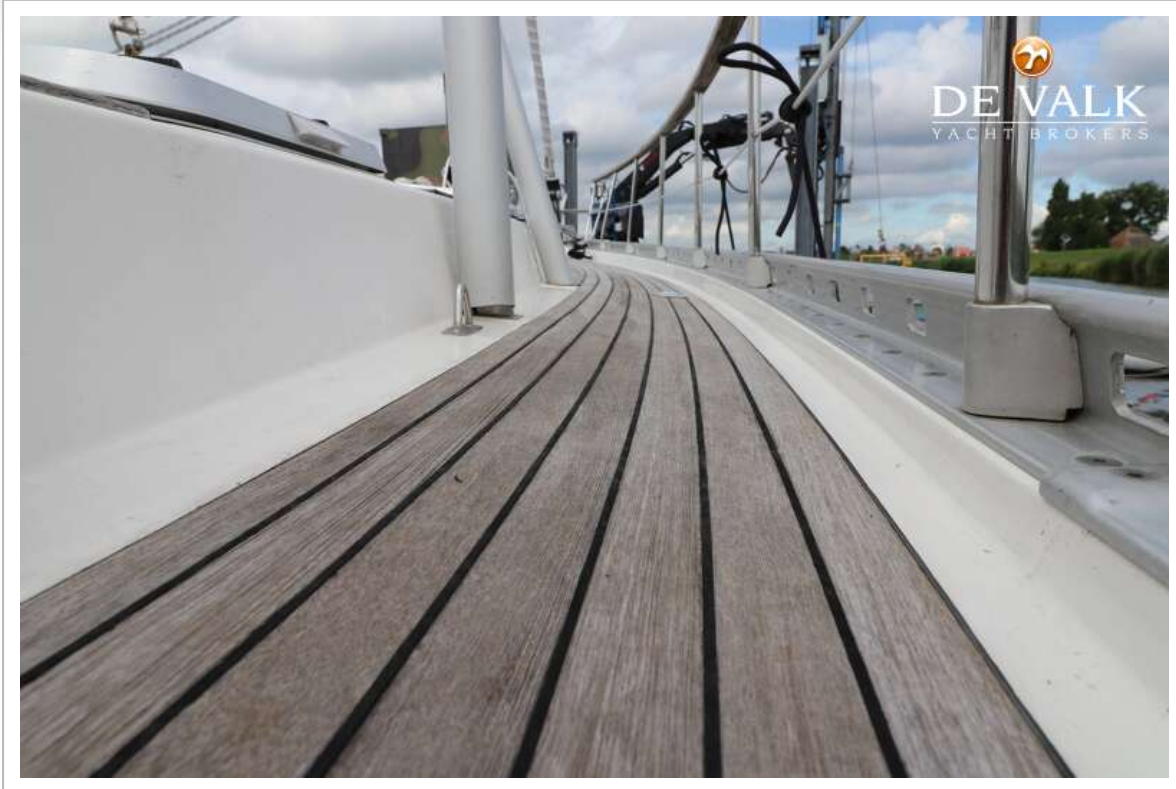
# NAUTICAT 521



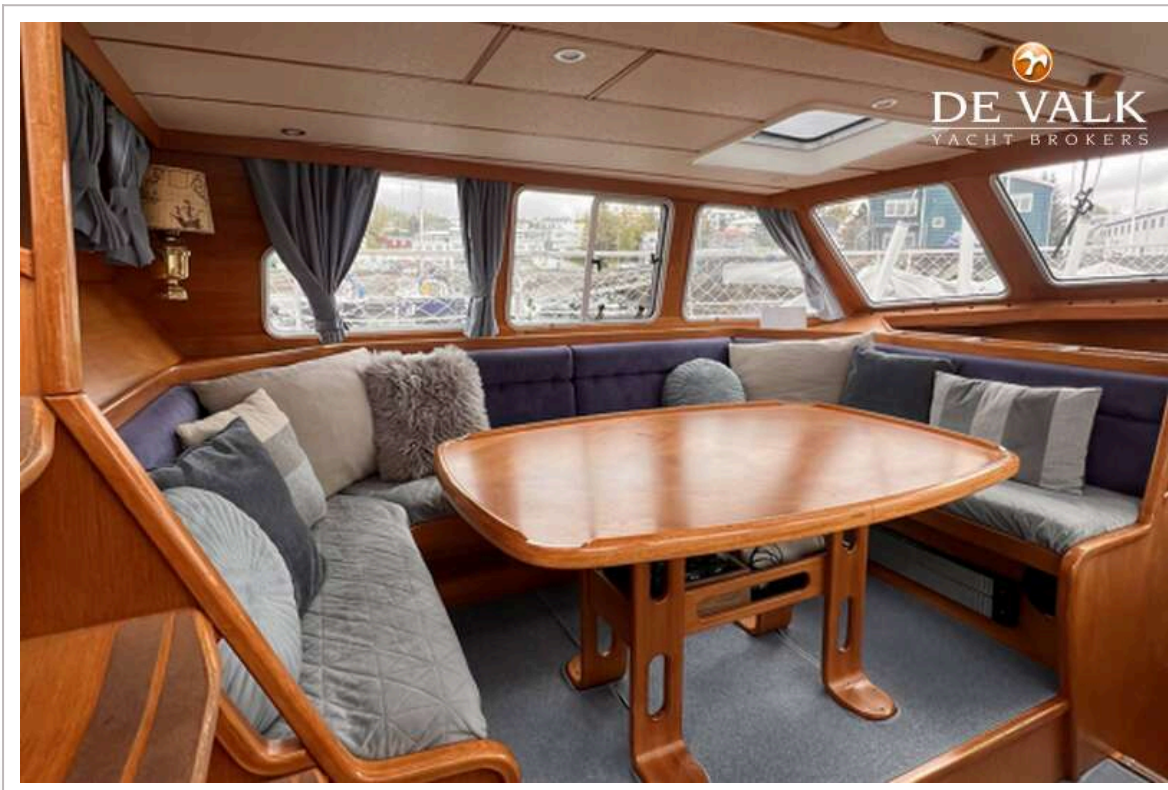
# NAUTICAT 521



# NAUTICAT 521



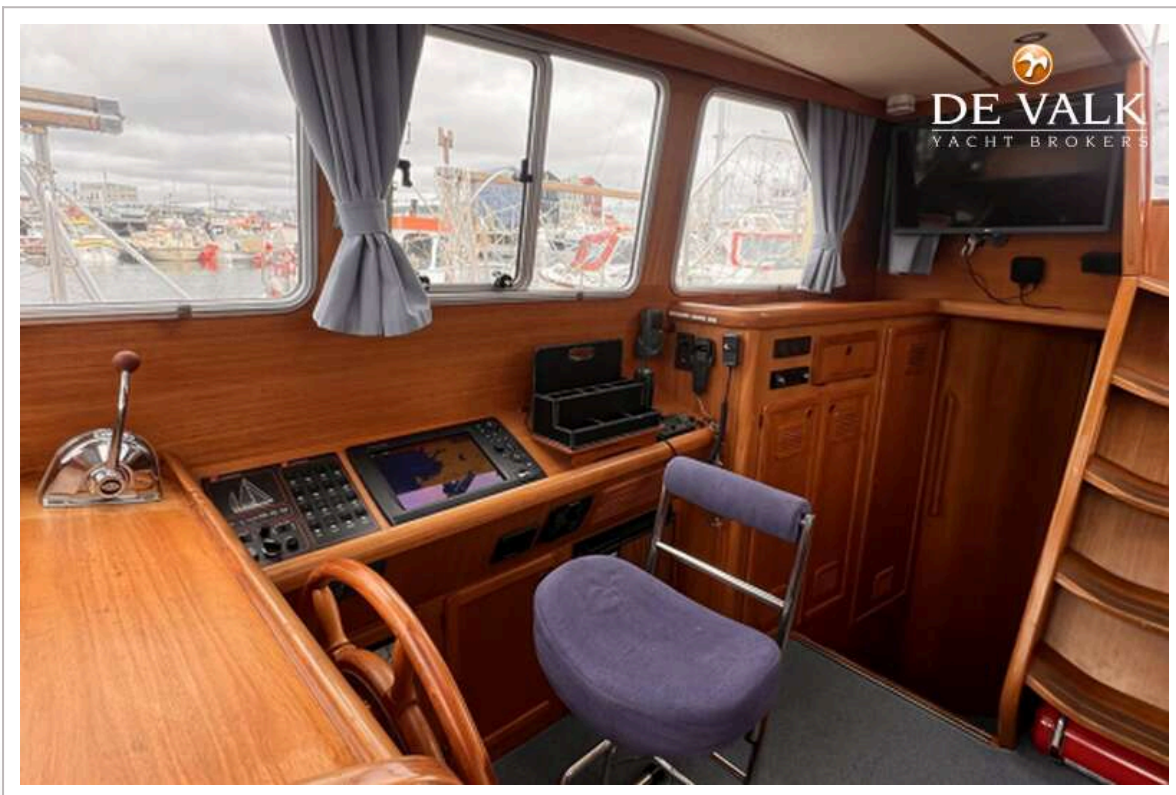
# NAUTICAT 521



# NAUTICAT 521



# NAUTICAT 521



# NAUTICAT 521



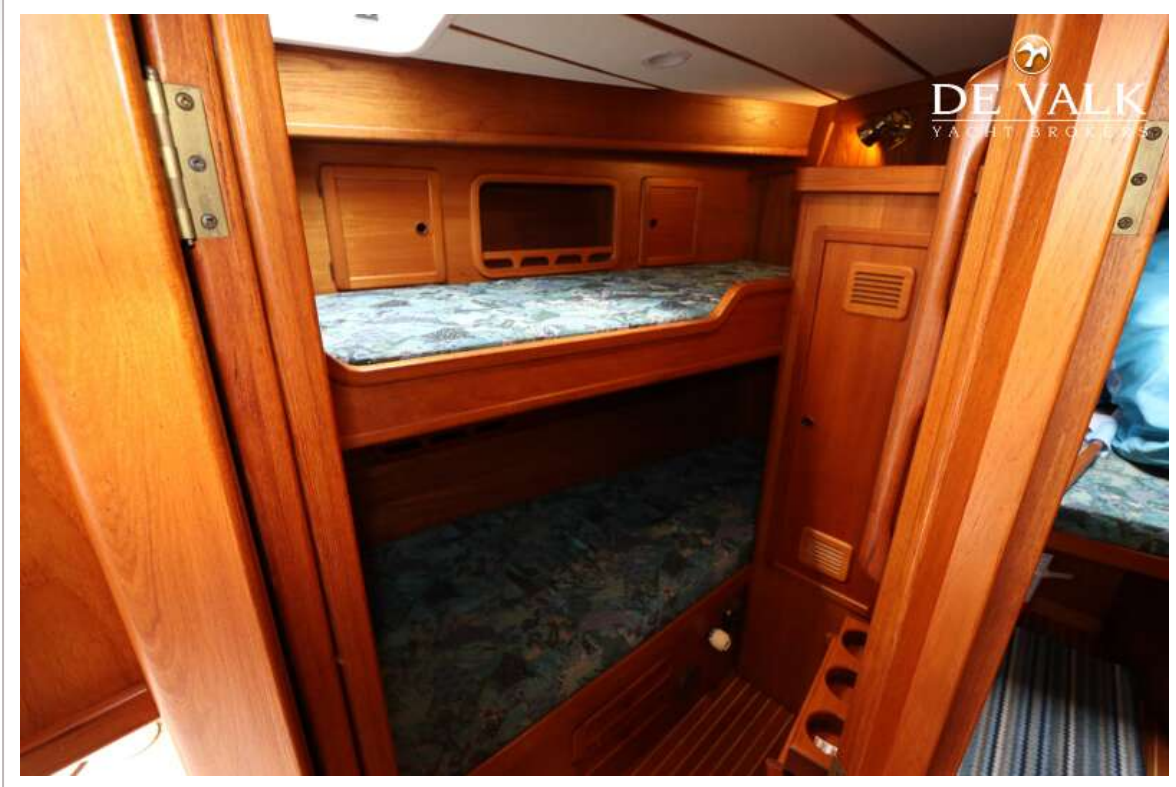
# NAUTICAT 521



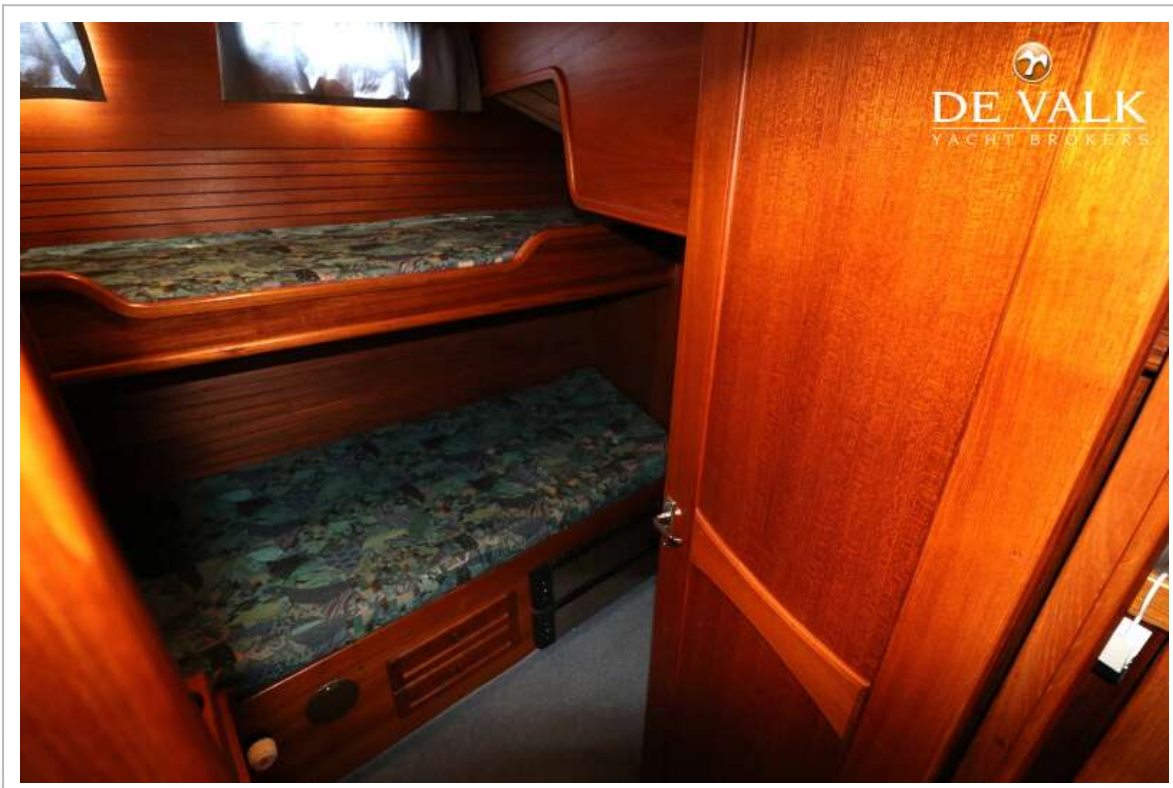
# NAUTICAT 521



# NAUTICAT 521



# NAUTICAT 521



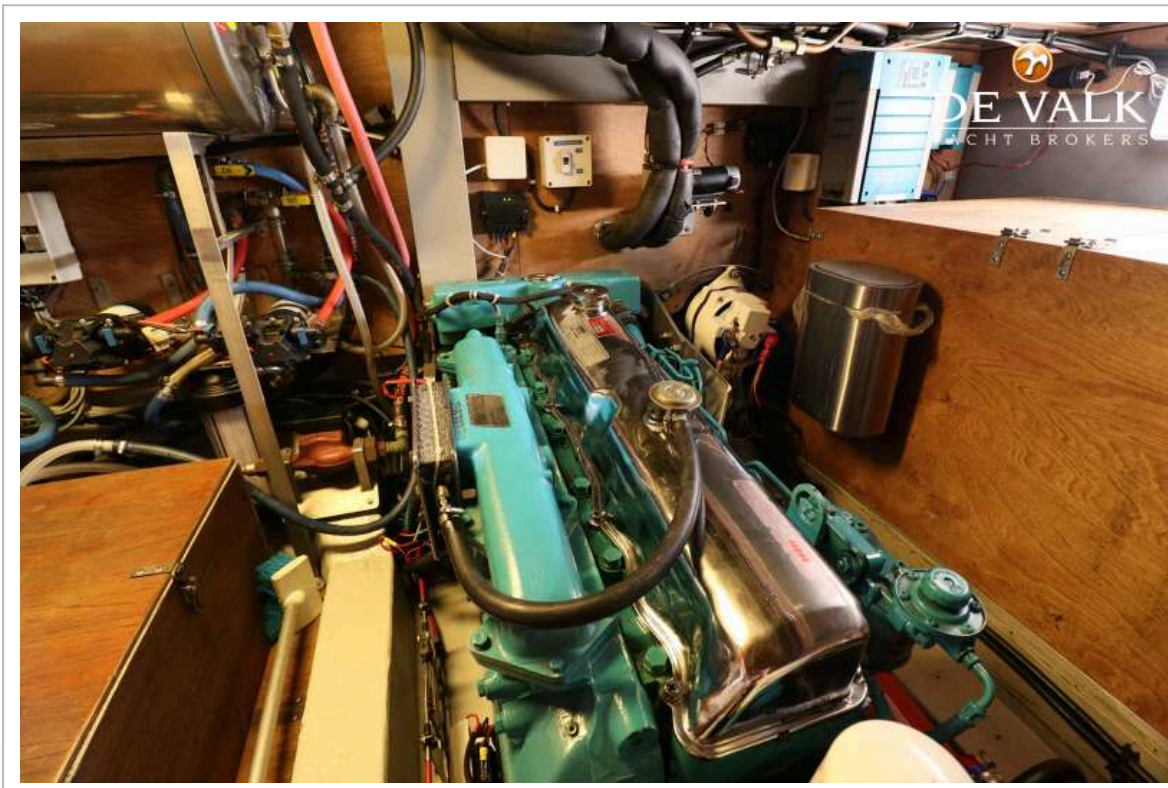
# NAUTICAT 521



# NAUTICAT 521



# NAUTICAT 521



# NAUTICAT 521



# NAUTICAT 521

