



DE VALK
YACHT BROKERS



GALEON 380 FLY



DE VALK
YACHT BROKERS

GALEON 380 FLY

BROKER'S COMMENTS

Galeon 380 FLY "Gakima" built in 2000 by the P.P.H.U. GALEON shipyard in Gdansk. Easy handling due her Twin Volvo Penta diesel engines and bow thruster. Two cabins and bathroom (shower/washbowl/toilet), galley, saloon, cockpit, and flybridge with helmposition and sunbed. Furthermore equipped with a Victron battery charger and inverter and Scheppach generator. This motor yacht is not located in our sales marina, viewing possible by appointment,

Reinier van der Wolf

SPECIFICATIONS

Dimensions	11.49 x 3.73 x 0.72 (m)	Builder	P.P.H.U. GALEON, Gdansk
Built	2000	Cabins	2
Material	GRP	Berths	4
Engine(s)	2 x Volvo Penta AD41P-A diesel	Hp/Kw	2 x 200.00 (hp), 147.20 (kw)
Asking price	€ 119.500 (VAT)	Lying	elsewhere / Not at sales office

CONTACT

Sales office	De Valk Monnickendam B.V.	Telephone	+31 (0)299 65 63 50
Address	Hoogedijk 6 1145 PM Katwoude NL	E-mail	monnickendam@devalk.nl

DISCLAIMER

These particulars are given in good faith as supplied but cannot be guaranteed.



GENERAL

Model	GALEON 380 FLY
Type	motor yacht
LOA (m)	11,49
Beam (m)	3,73
Draft (m)	0,72
Year built	2000
Builder	P.P.H.U. GALEON, Gdansk
Country	Poland
Displacement (t)	10
CE norm	B
Hull material	GRP
Hull colour	white
Hull shape	deep-V
Superstructure material	GRP
Rubbing strake	rubber
Deck material	GRP
Deck finish	non-skid moulded in
Cockpit deck finish	teak
Window frame	aluminium
Window material	tempered glass
Deckhatch	yes
Flybridge	yes
Flybridge cover	yes
Radar arch	collapsible
Level indicator (fuel tank)	Wema
Level indicator (freshwater)	Wema
Level indicator (blackwater)	Wema
Wheel steering	hydraulic
Inside helm position	yes
Flybridge helm position	yes



ACCOMMODATION

Cabins	2
Berths	4
Interior	yes
Layout	Owners cabin with French berth in te front, bathroom, guest cabin, galley, helmstpostion, saloon, cockpit.
Floor	wood Carpet in the saloon and cabins, wood in the galley and bathroom
Open cockpit	yes
Saloon	yes
Heating	diesel ducted hot air Ardic
Heating 2	central heating Warmwater heating system on the boiler
Air-conditioning	Webasto FCF
Sliding door to cockpit	yes
Galley	yes
Countertop	marble
Sink	stainless steel Double stainless steel sink
Cooker	induction Steba single burner induction stove
Microwave/oven combi	Micromaxx
Fridge	Isothemp with freezing compartment
Hot water system	220V + engine Isothemp boiler
Water pressure system	electrical
Owners cabin	French bed
Wardrobe	hanging/drawers/shelves
Bathroom	separate
Toilet	yes
Toilet system	electric
Wash basin	yes
Shower	yes
Guest cabin 1	double bed
Wardrobe	hanging and shelves



GALEON 380 FLY

MACHINERY

No of engines	2
Make	Volvo Penta
Type	AD41P-A
HP	200
kW	147.20
Fuel	diesel
Engine cooling system	freshwater heat exchanger
Drive	Z-drive
Engine controls	bowden cable Volvo Penta
Bowthruster	electric
Propeller blades	Duoprop
Manual bilge pump	yes
Electric bilge pump	yes
Generator	Scheppach generator 4Kva
Start battery	2 x 165 ah Sportline
Service battery	2 x 165 ah Sportline
Battery monitor	Victron BMV-501
Battery charger	Victron Blue Smart charger 12/30-3 outputs
Inverter	Victron Phoenix inverter Smart 12/1600
Shorepower	with cable
Trimtabs	QL trimtabs

NAVIGATION

Compass	Plastimo liquid compass
Compass on flybridge	Plastimo liquid compass
Depth sounder	Raytheon ST60 Depht
Log	Raytheon ST60 Speed
VHF	Standart Horizon Explorer Vhf
Navigation lights	yes



EQUIPMENT

Cockpit cover	yes
Bimini	On the flybridge
Cockpit cushions	yes
Bathing platform	yes
Boarding ladder	stainless steel
Transom door	yes
Deck shower	yes
Anchor	Stainless steel 15kg
Anchor chain	Galvanized chain
Windlass	electrical Lofrance
Sea railing	stainless steel
Grab rail (superstructure)	stainless steel
Wiper	2x
Window heating	For the front windows in the saloon.
Horn	yes
Fenders	yes
Mooring lines	yes
TV	Samsung
Radio	Caliber RMD 057 DAB
Clock - barometer	Clock (defect) and barometer
Extra info	Sunbed on the flybridge



GALEON 380 FLY



GALEON 380 FLY



GALEON 380 FLY



GALEON 380 FLY



GALEON 380 FLY



GALEON 380 FLY



GALEON 380 FLY



GALEON 380 FLY



GALEON 380 FLY



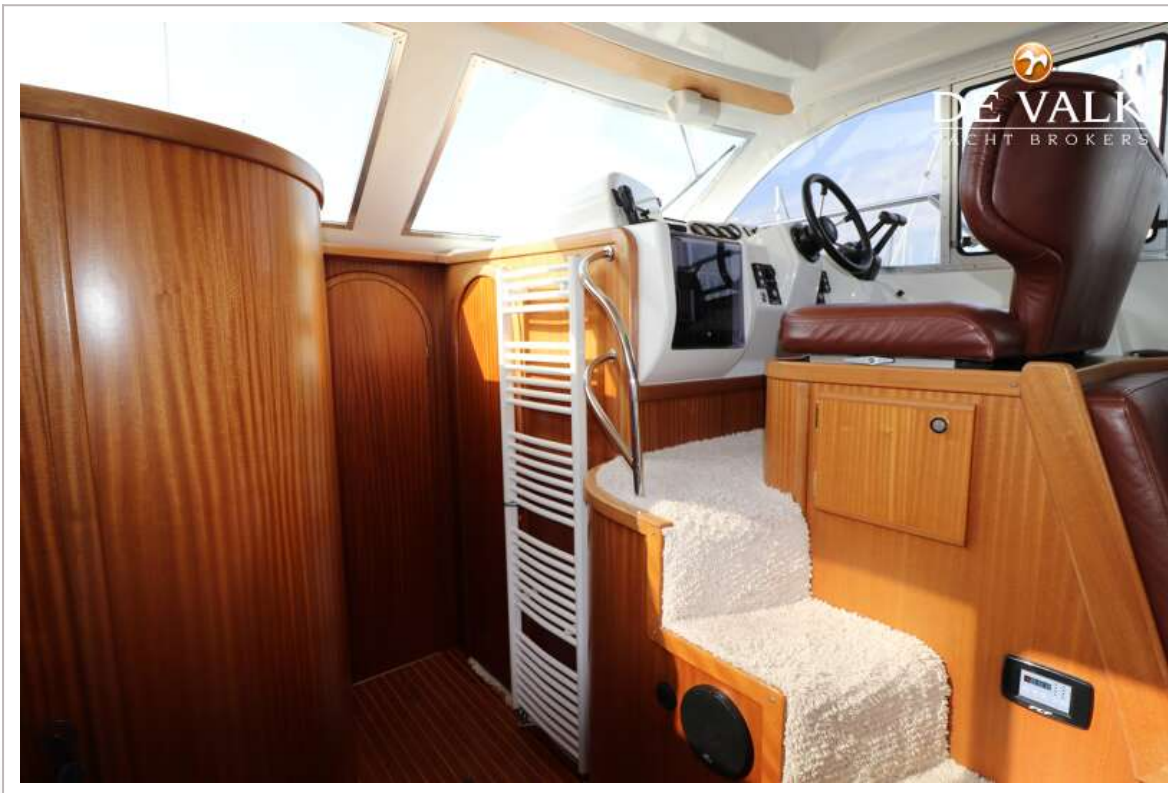
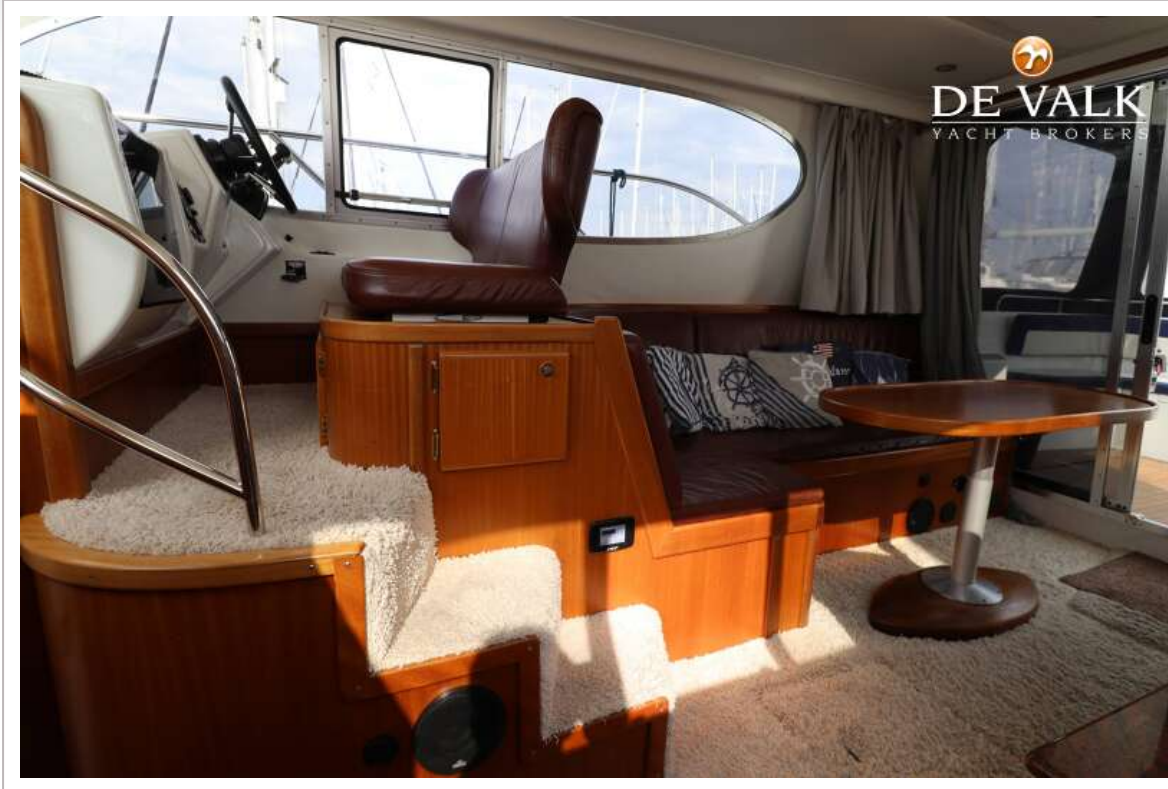
GALEON 380 FLY



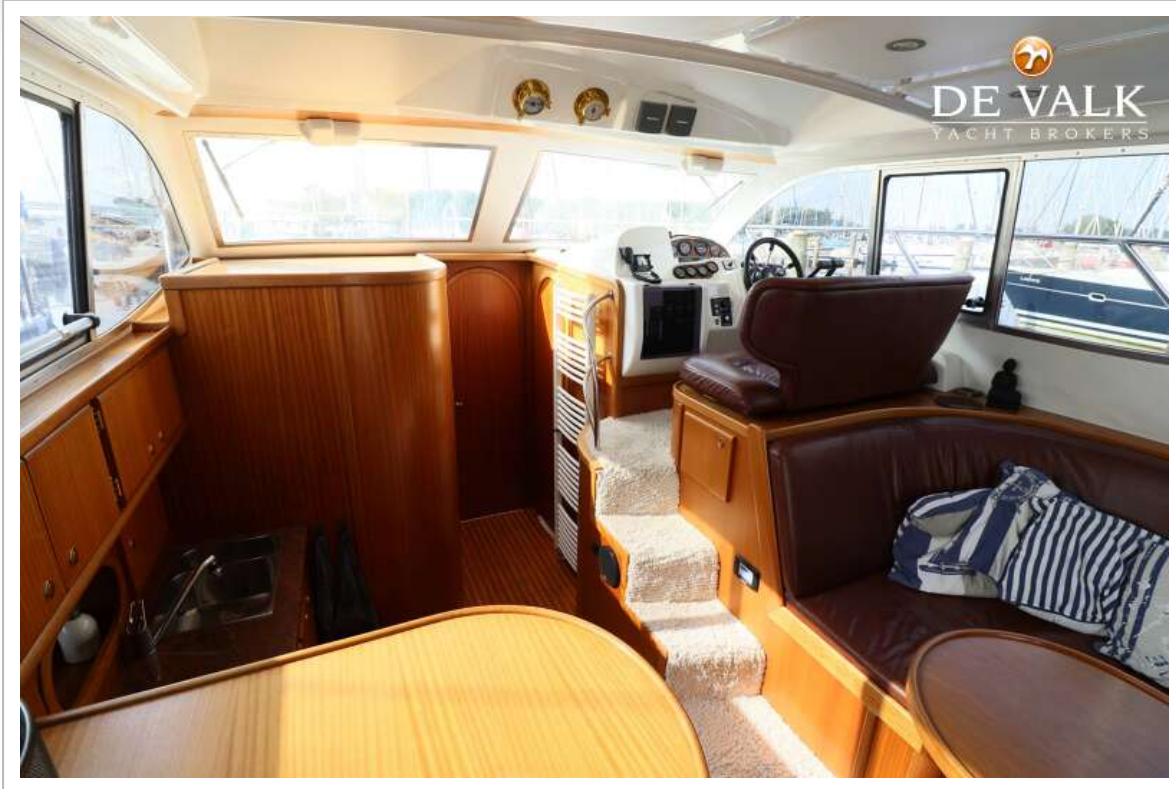
GALEON 380 FLY



GALEON 380 FLY



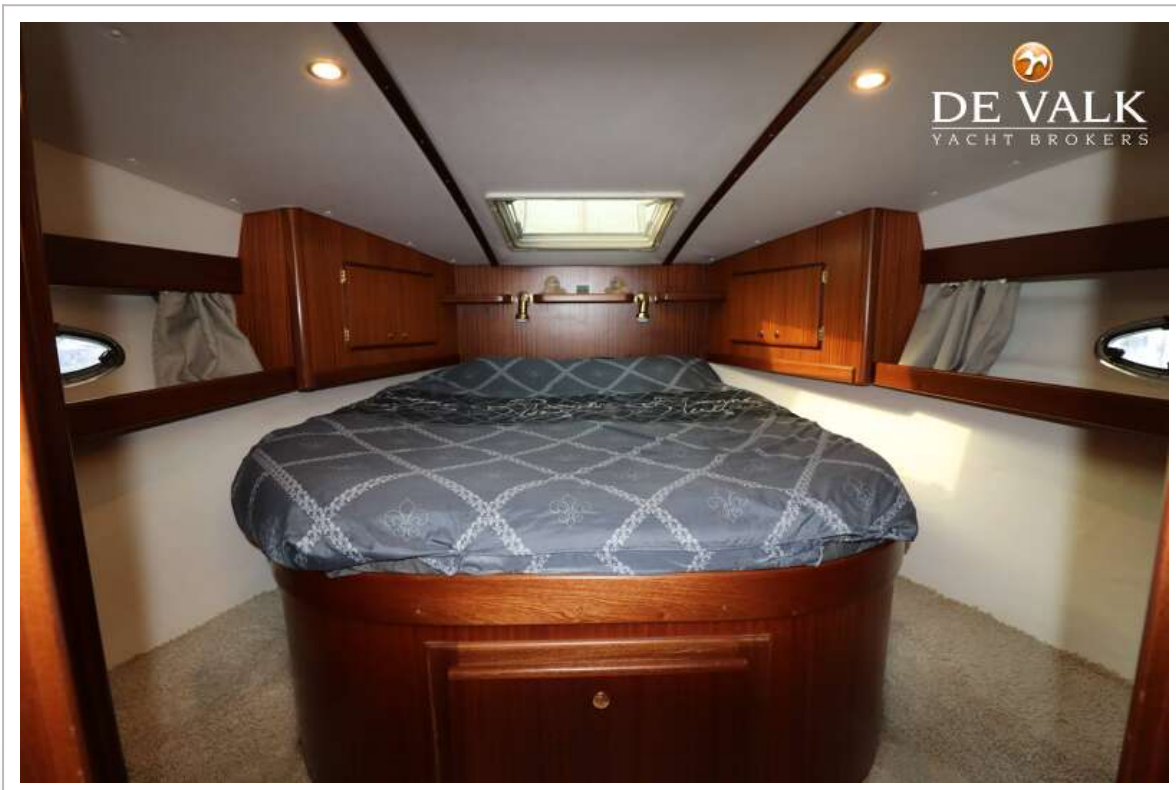
GALEON 380 FLY



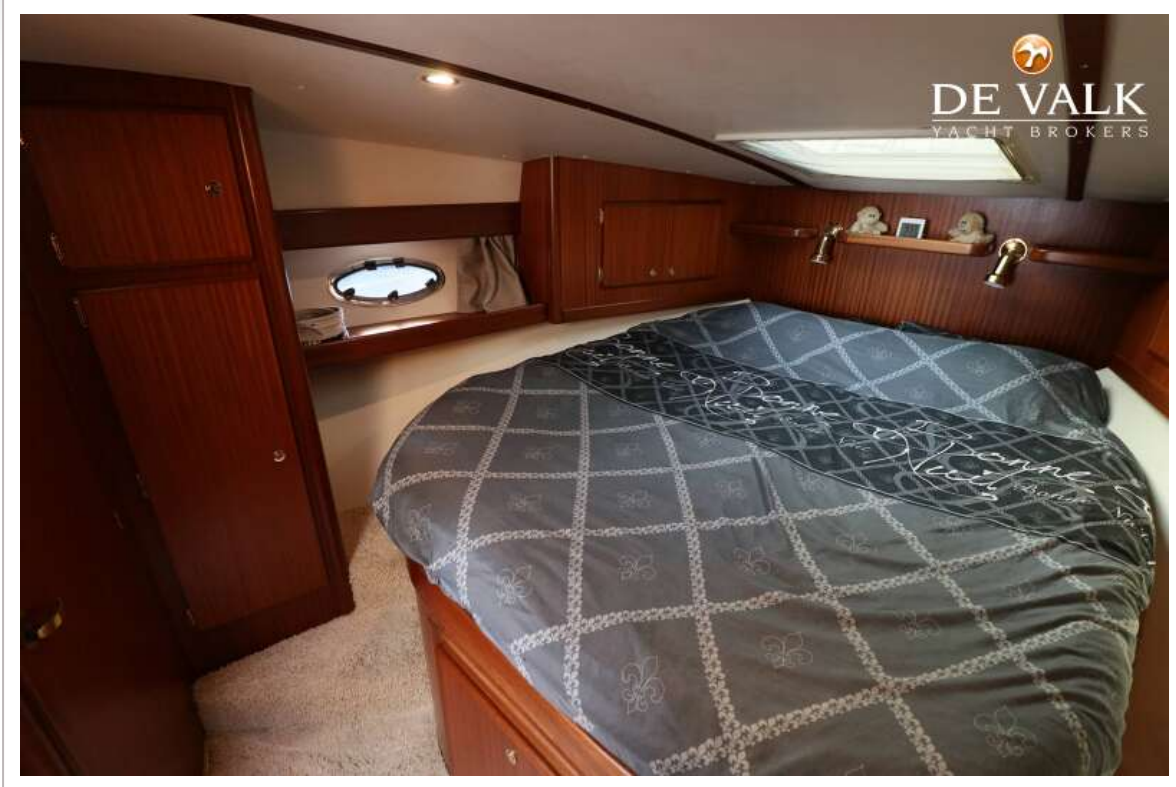
GALEON 380 FLY



GALEON 380 FLY



GALEON 380 FLY



GALEON 380 FLY



GALEON 380 FLY



GALEON 380 FLY



GALEON 380 FLY

