



## NEREIDS CUSTOM BUILT YACHT 27 M



# NEREIDS CUSTOM BUILT YACHT 27 M

## BROKER'S COMMENTS

Nereids Custom Built 27m sailingyacht offers timeless design, solid engineering, and luxury throughout. Designed for long-range cruising with generous living spaces, 3 elegant guest cabins, and full crew quarters. Refitted in 2022 with upgrades to navigation, interiors, and mechanical systems. Ideal for private use or charter. Impeccably maintained and ready for her next owner. Viewings highly recommended for discerning buyers.

*Eric Lamers*

## SPECIFICATIONS

<b>Dimensions</b>	27.00 x 6.00 x 3.05 (m)	<b>Builder</b>	Nereids Yachts
<b>Built</b>	2008	<b>Cabins</b>	3
<b>Material</b>	Aluminium	<b>Berths</b>	6
<b>Engine(s)</b>	1 x MAN DOOSAN/Daewoo diesel	<b>Hp/Kw</b>	230.00 (hp), 169.28 (kw)
<b>Asking price</b>	€ 1.150.000 (VAT Paid)	<b>Lying</b>	contact Antibes

## CONTACT

<b>Sales office</b>	De Valk Antibes	<b>Telephone</b>	+33 492 91 0202
<b>Address</b>	2, Avenue de Verdun 06600 Antibes FR	<b>E-mail</b>	antibes@devalk.nl

## DISCLAIMER

These particulars are given in good faith as supplied but cannot be guaranteed.



# NEREIDS CUSTOM BUILT YACHT 27 M

## GENERAL

Model	NEREIDS CUSTOM BUILT YACHT 27 M
Type	sailing yacht
LOA (m)	27,00
Beam (m)	6,00
Draft (m)	3,05
Headroom (m)	2,00
Year built	2008
Builder	Nereids Yachts
Country	Czech Republic
Designer	Julius Strawinsky (ext)/P.Raemdonc (int)
Gross tonnage	43
Hull material	aluminium
Hull colour	white
Deck material	teak
Cockpit deck finish	teak
Fuel tank (litre)	2200 L
Freshwater tank (litre)	2 x 750 L, port and starboard
Blackwater tank (litre)	150L + 300L
Greywater tank (litre)	800L
Wheel steering	yes
Extra info	Built in 2008 / 2018 (refit interior and deck), 2020 (refit tech

## ACCOMMODATION

Cabins	3
Berths	6
Crew cabin	2
Heating	yes
Air-conditioning	yes
Navigation center	yes
Galley	Large and fully equipped



# NEREIDS CUSTOM BUILT YACHT 27 M

Countertop	stainless steel
Sink	yes
Cooker	induction 5 plates 220V 50hz
Oven	Siemens 220V 50hz
Microwave	Miele 220V 50hz
Fridge	24V DC air cooled (2x)
Freezer	24V DC air cooled (2x)
Wine cooler	Miele 220V 50hz
Hot water system	yes
Dishwasher	Miele 220V 50hz
Owners cabin	Primary suite with a queen size bed and en-suite bathroom
Bathroom	en suite
Guest cabin 1	double bed With en-suite bathroom facilities
Guest cabin 2	double bed With en-suite bathroom facilities
Bathroom	en suite
Bathroom	yes
Crew cabin(s)	yes
Bathroom (crew)	yes
Washing machine	Bosch Series 6 (2022) 220V 50hz
Dryer	Bosch Series 2 (2022) 220V 50hz

## MACHINERY

No of engines	1
Make	MAN
Type	DOOSAN/Daewoo
HP	230
kW	169.28
Fuel	diesel
Maximum speed (kn)	10,5
Cruising speed (kn)	8
Range (nm)	1500



# NEREIDS CUSTOM BUILT YACHT 27 M

Engine hours	3600
Gearbox	DONG-I with 2.09:1 reduction ratio
Propeller type	PYTHON-DRIVE, 3 bladed MAXPROP spindle 110nm
Electric bilge pump	yes
Generator	Northern Lights, 16KW, Diesel
Batteries	900Ah
Battery charger	yes
Battery charger/inverter	Victron Energy Quattro 24/8000W/200A (2017)
Shorepower	230V AC Ring Main
Watermaker	Pure water 230V AC 50Hz - 120L/H

## NAVIGATION

Compass	Plastimo Horizon 135
Depth sounder	Clipper
VHF	ICOM HM139B Commandmic
Autopilot	Jefa
Radar	Raymarine C70
Plotter	yes
Plotter/GPS	Raymarine
Navtex	Furuno NX 700
Extra info	GSM: GMDSSSA
Extra info	Satcom: FURUNO SatcomC Iridium Go

## EQUIPMENT

Bimini	Cream canvas bimini top
Sun awning	Stainless steel bimini structure with cream canvas bimini top
Cockpit cushions	yes
Cockpit table	yes
Anchor chain	1 CZR 60kg / 1 CQR 80kg / 100m chain 16mm
Windlass	Muir VRC-4500 3,500W 24V DC
Life raft	yes



# NEREIDS CUSTOM BUILT YACHT 27 M

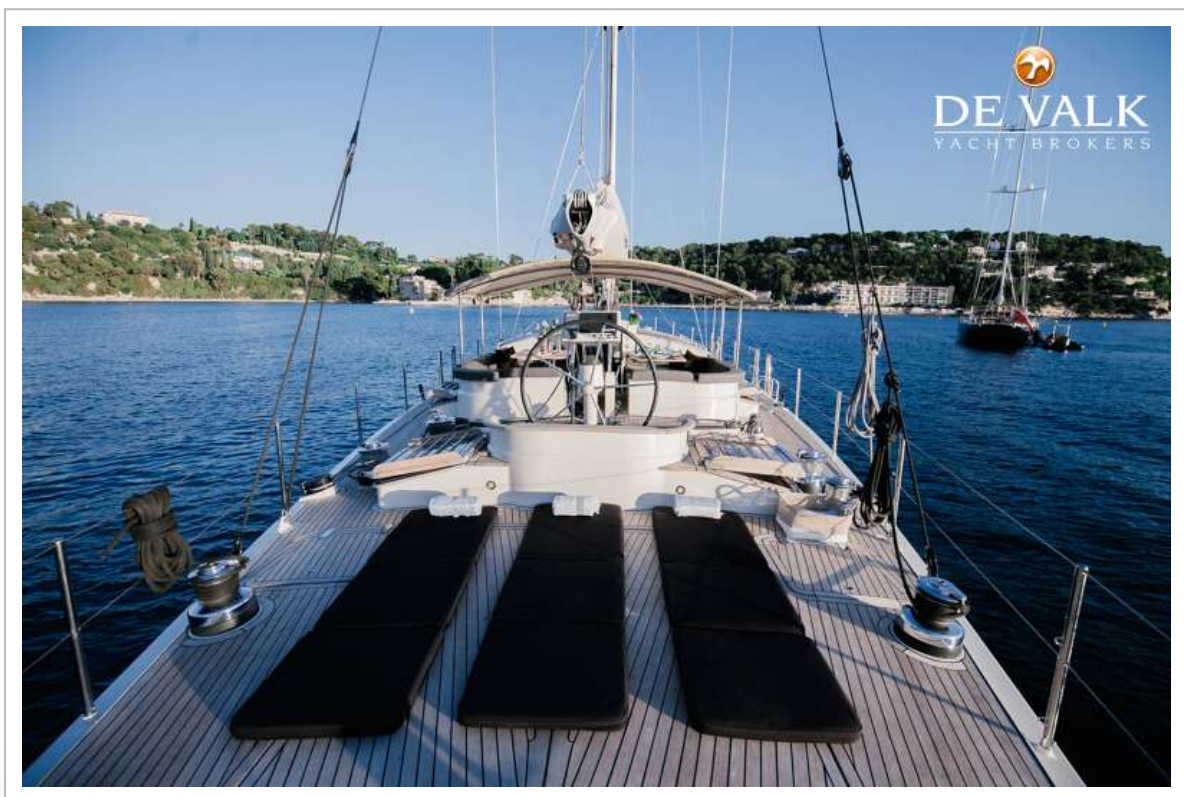
TV	yes
Radio	yes

## RIGGING

Rigging	Alucarbon 7/8 fractional rig with lazyjacks
Material mast	Alucarbon white-painted carbon fibre
Mainsail	Quantum fully battened spectra
Fully battened mainsail	Spectra, with 3 reefs fitted
Furling boom	Alucarbon white-painted carbon fibre with hayrack stracking syst
Genoa	Furling hi-cut yankee/genoa spectra carbon
Genoa furler	yes
Staysail	Spectra carbon, reefable
Yankee	Furling hi-cut
Reefing System	slabreefing
Boomvang	yes
Primary sheet winch	yes
Genoa sheetwinches	yes
Halyard winches	yes
Reefing winch	yes
Multifunctional winches	ANTAL stainless steel, 2xW70 2 speed electric self-tailing,

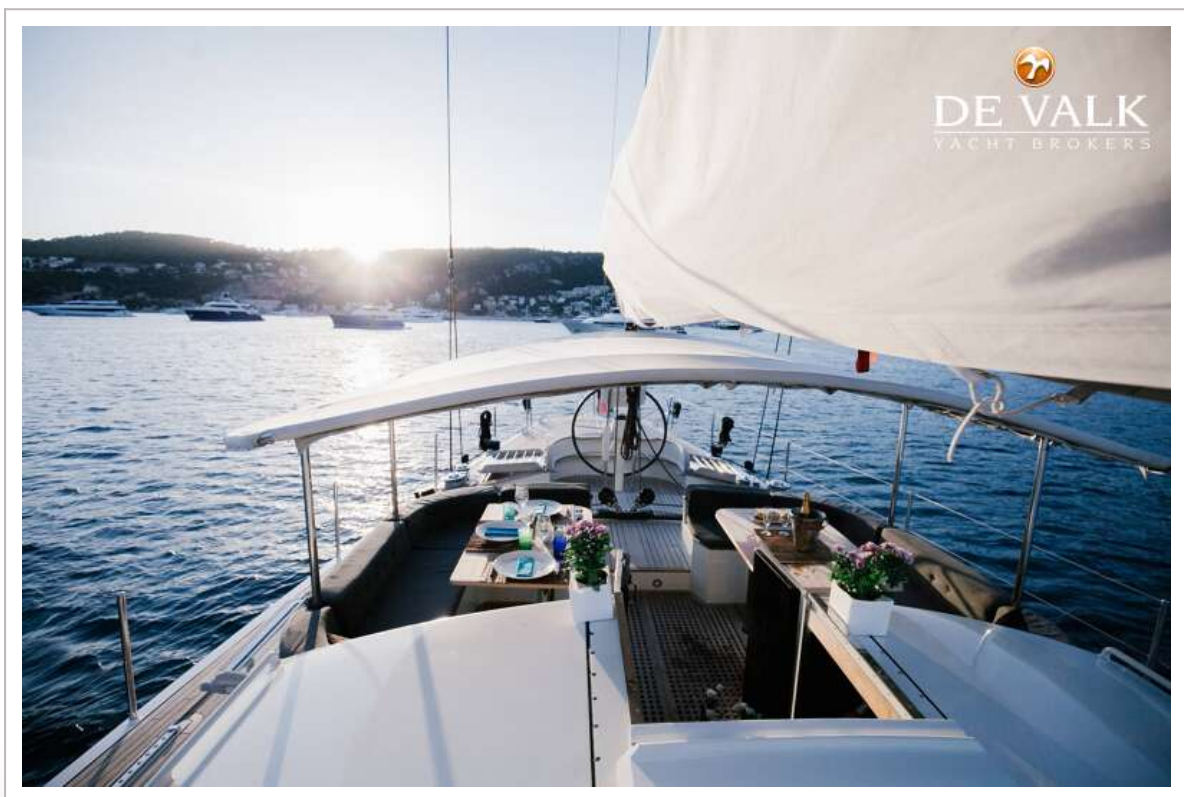
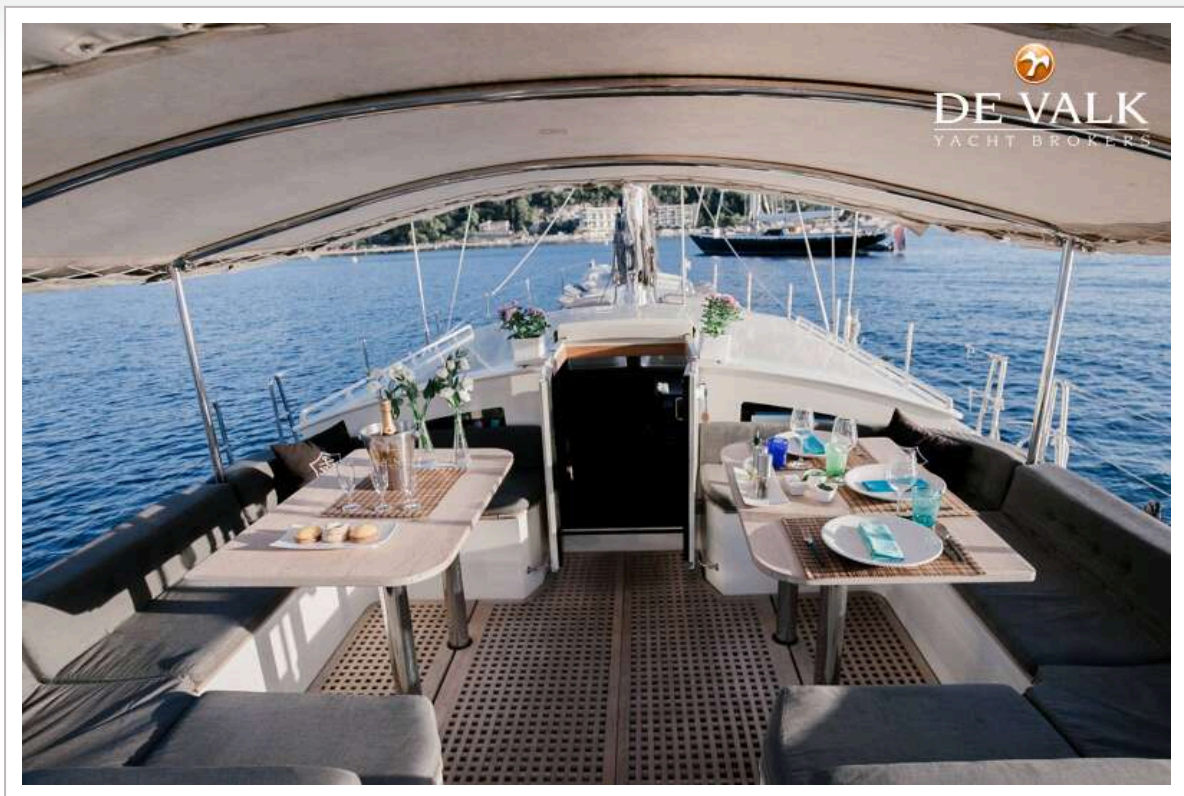


# NEREIDS CUSTOM BUILT YACHT 27 M



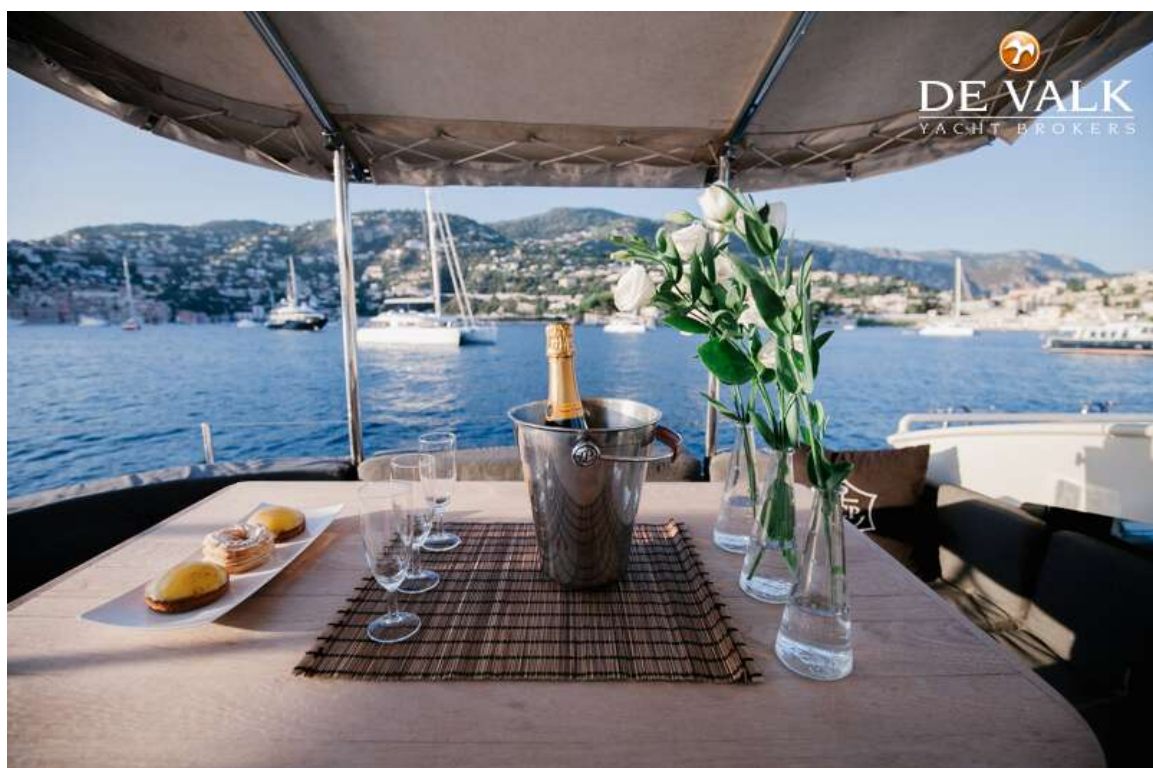
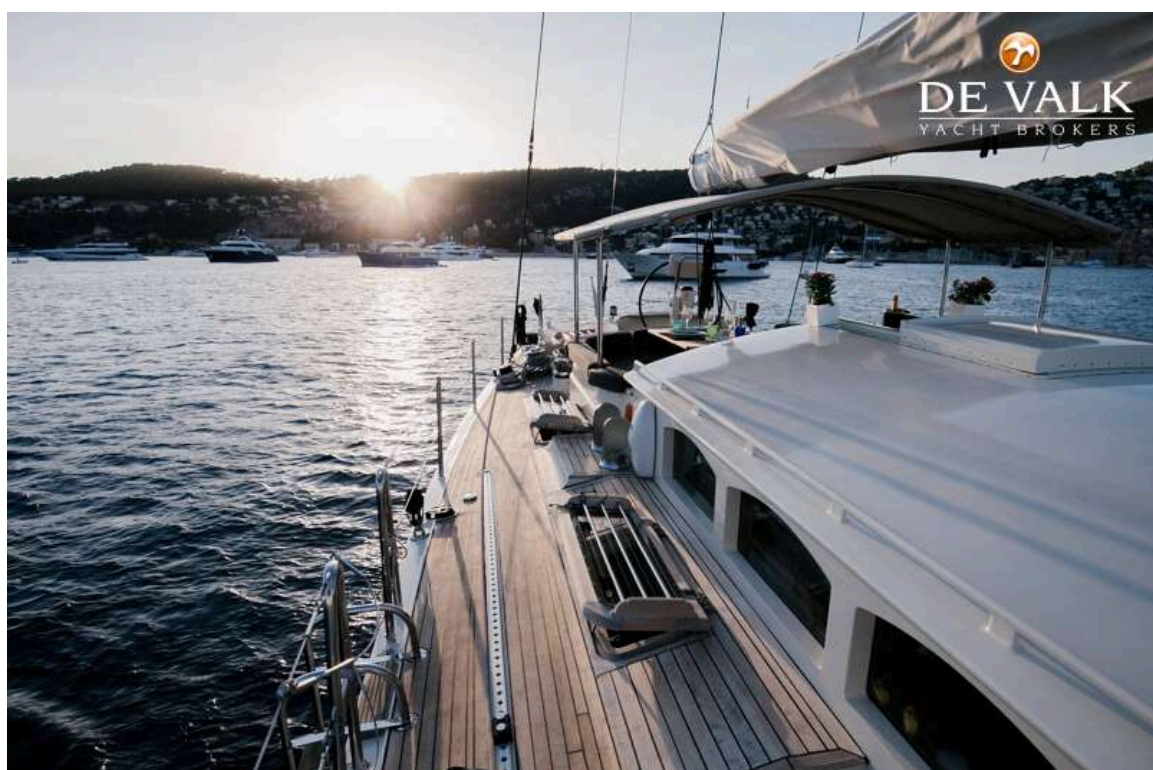


# NEREIDS CUSTOM BUILT YACHT 27 M



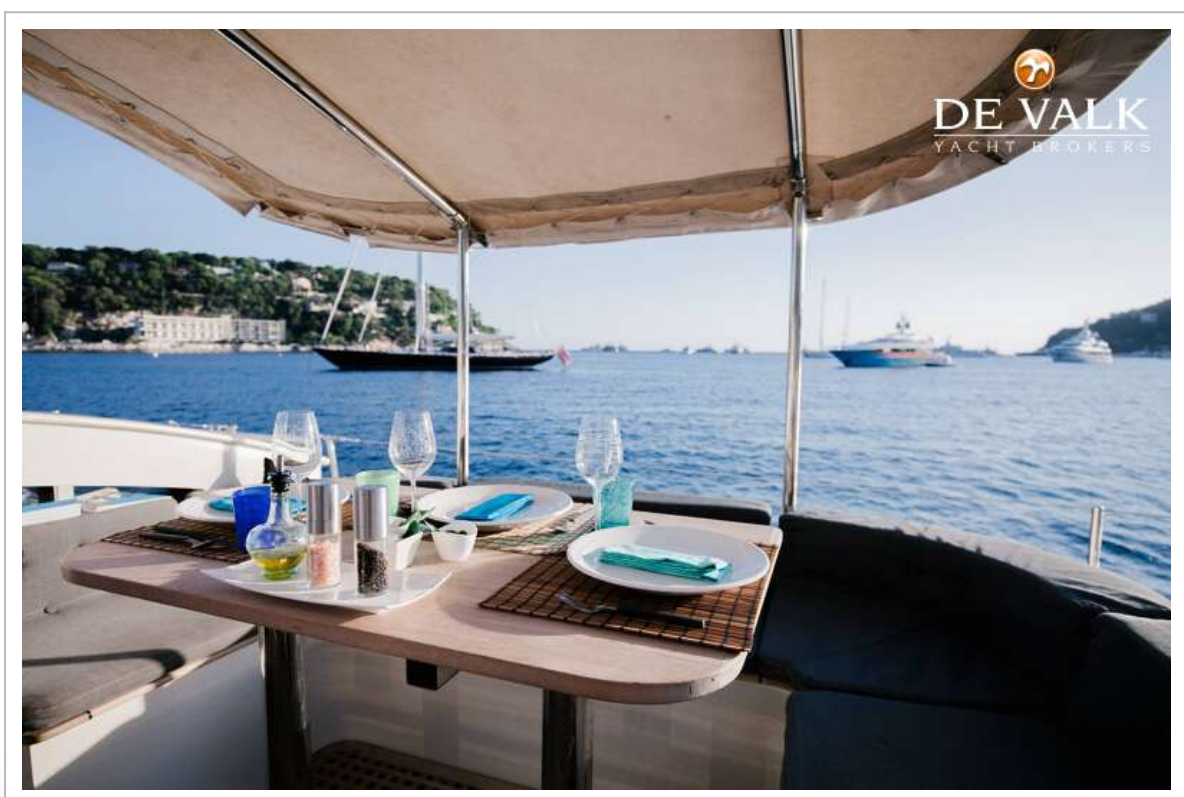
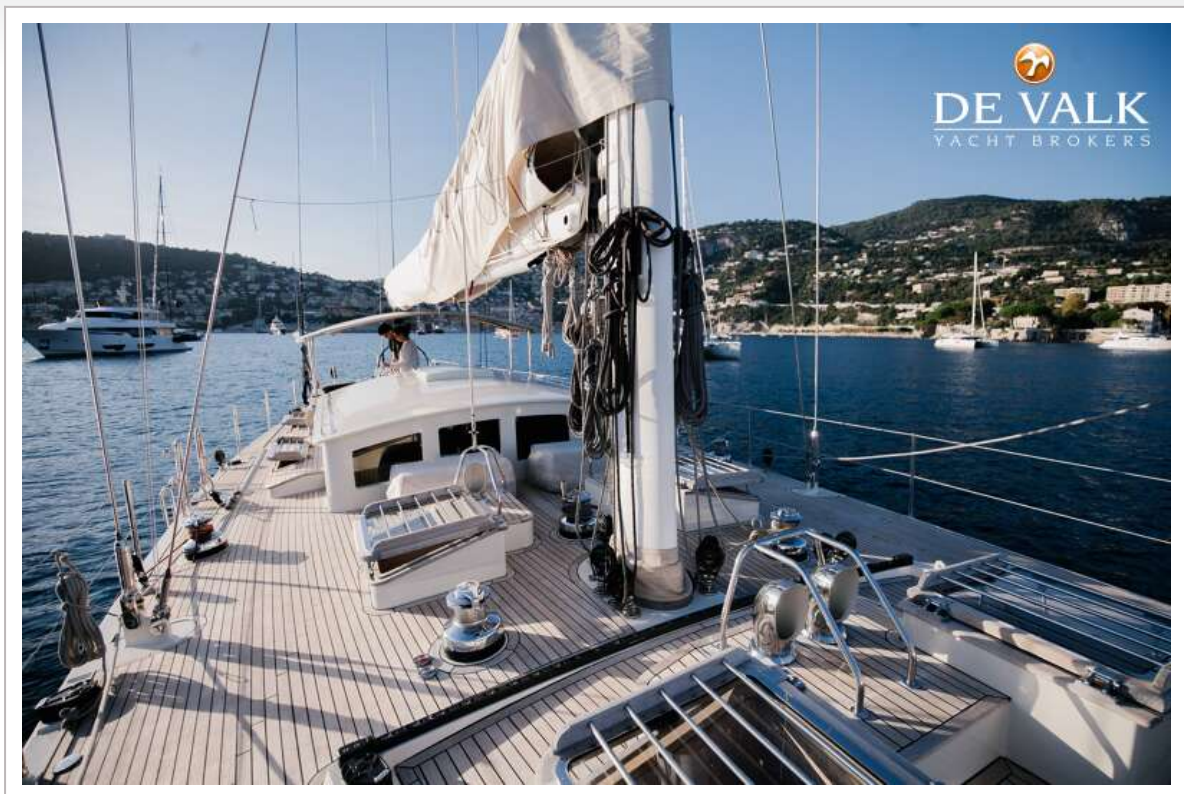


# NEREIDS CUSTOM BUILT YACHT 27 M

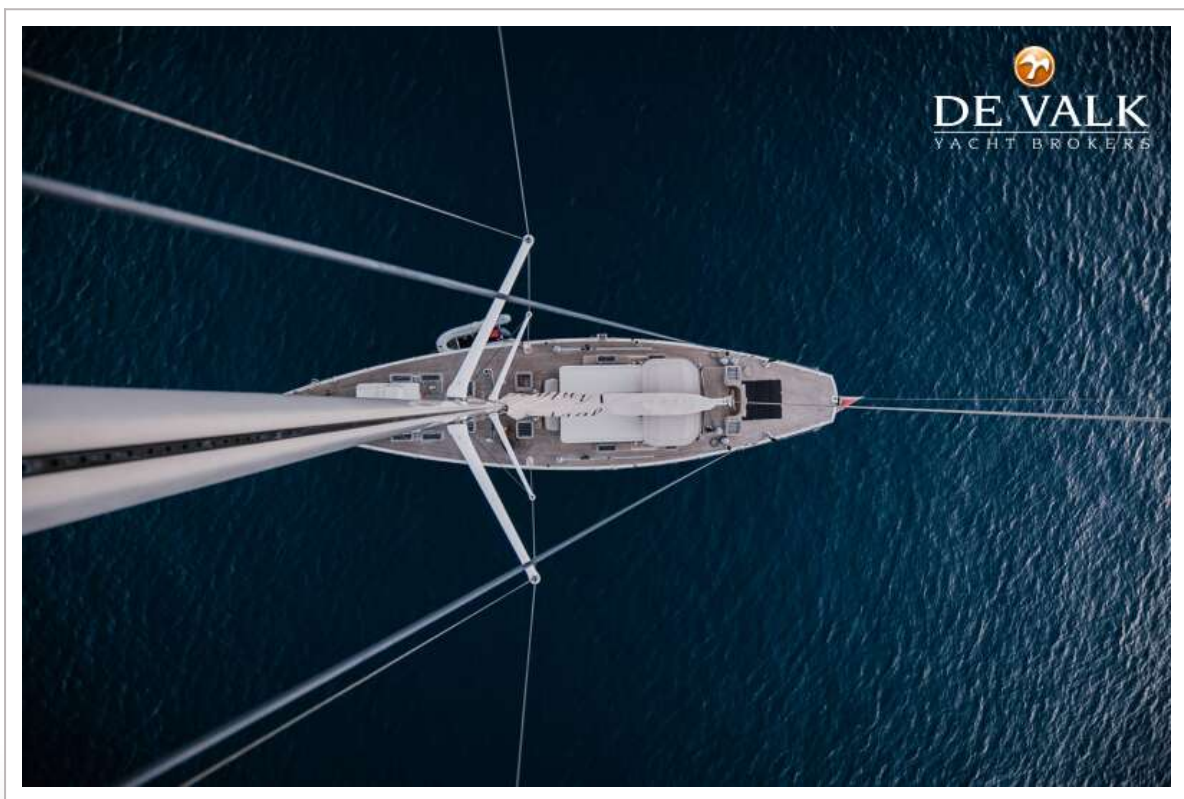




# NEREIDS CUSTOM BUILT YACHT 27 M



# NEREIDS CUSTOM BUILT YACHT 27 M

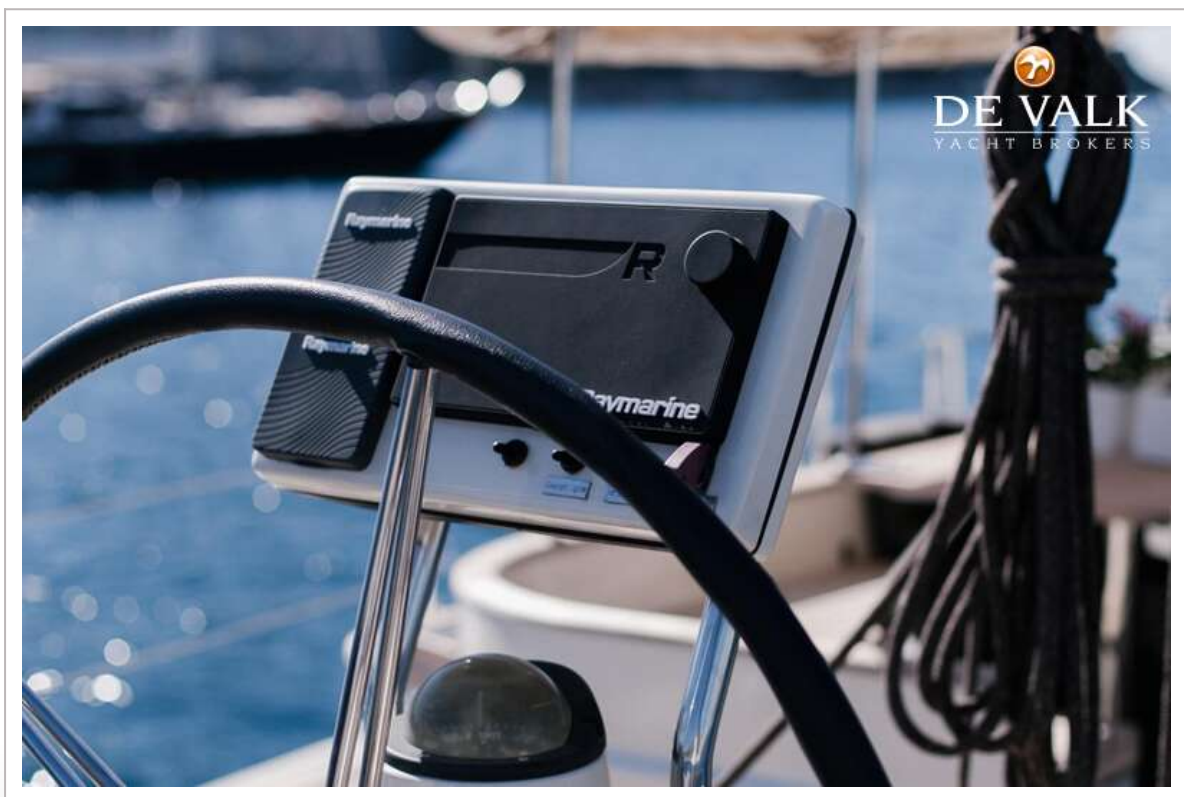


# NEREIDS CUSTOM BUILT YACHT 27 M





# NEREIDS CUSTOM BUILT YACHT 27 M





# NEREIDS CUSTOM BUILT YACHT 27 M

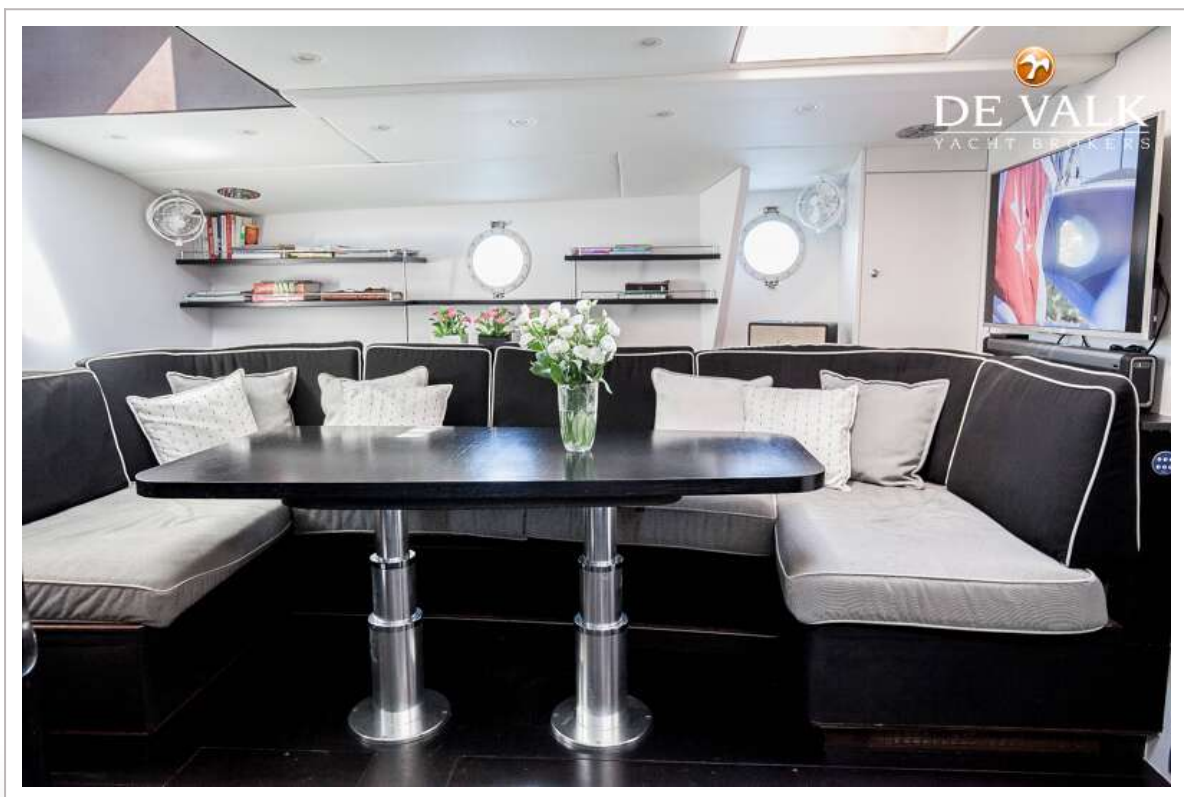


# NEREIDS CUSTOM BUILT YACHT 27 M

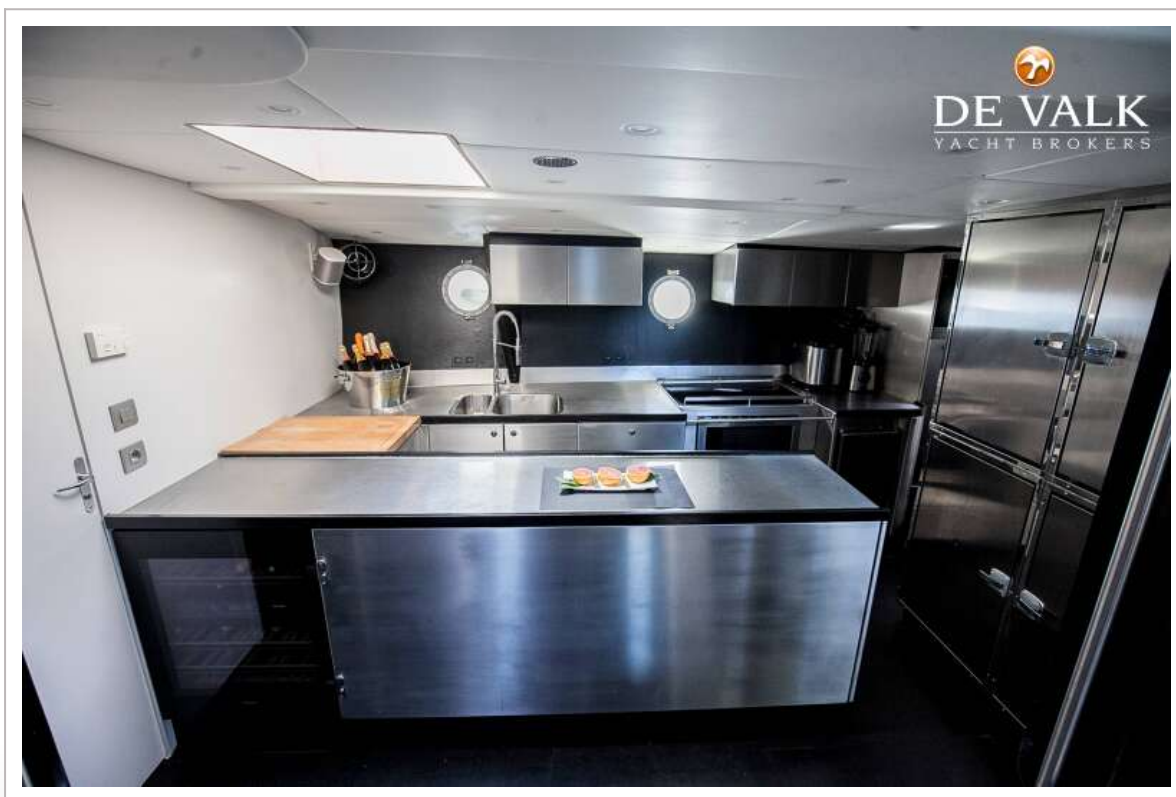
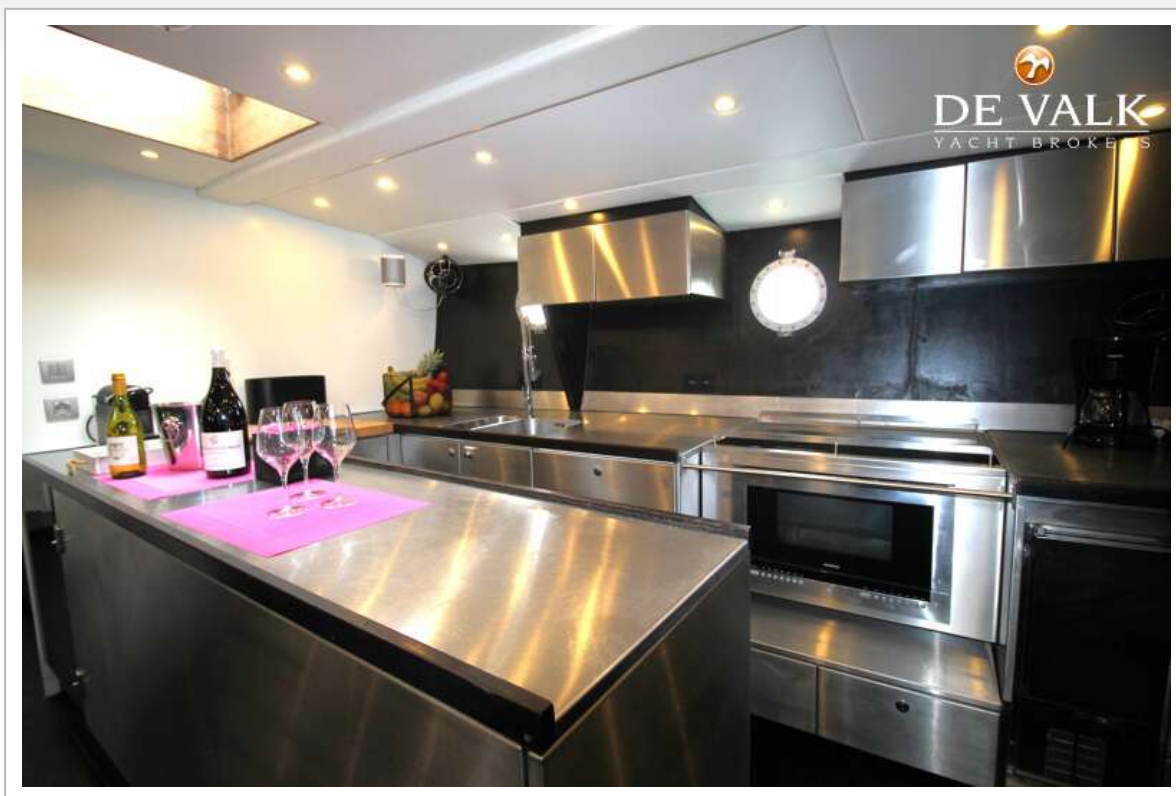




# NEREIDS CUSTOM BUILT YACHT 27 M

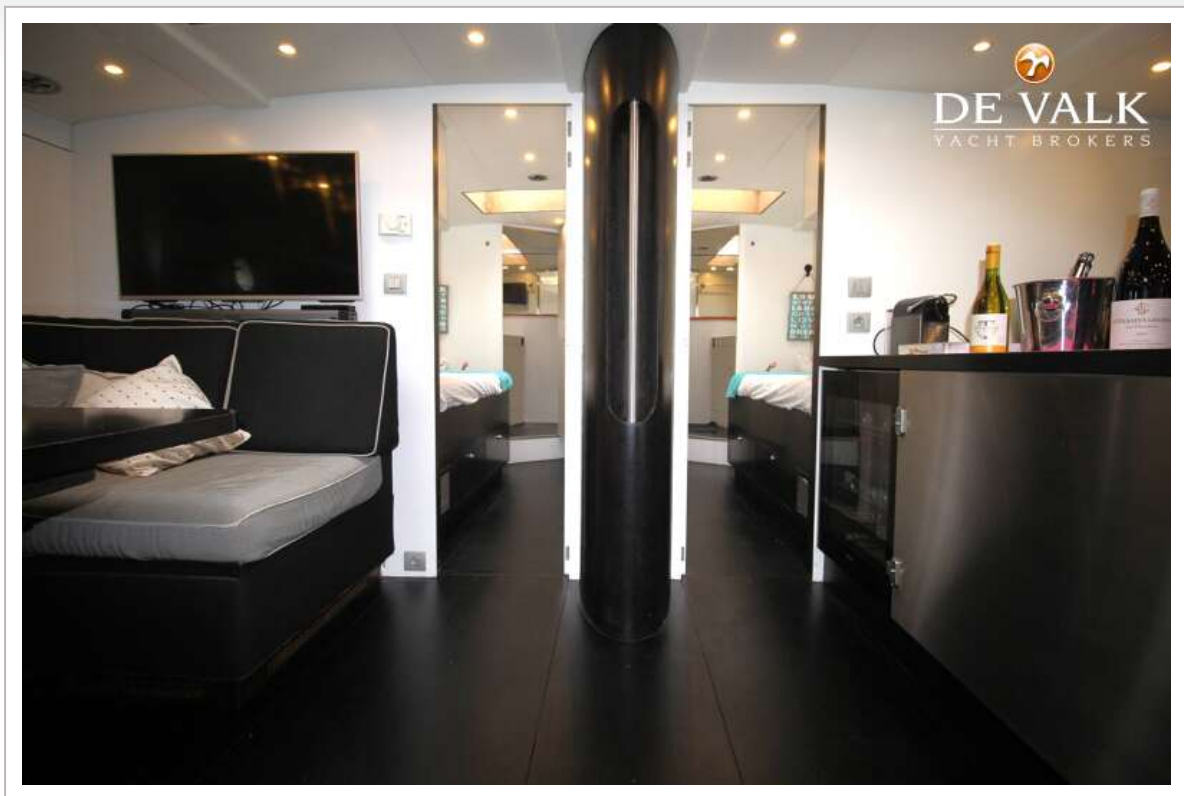


# NEREIDS CUSTOM BUILT YACHT 27 M





# NEREIDS CUSTOM BUILT YACHT 27 M

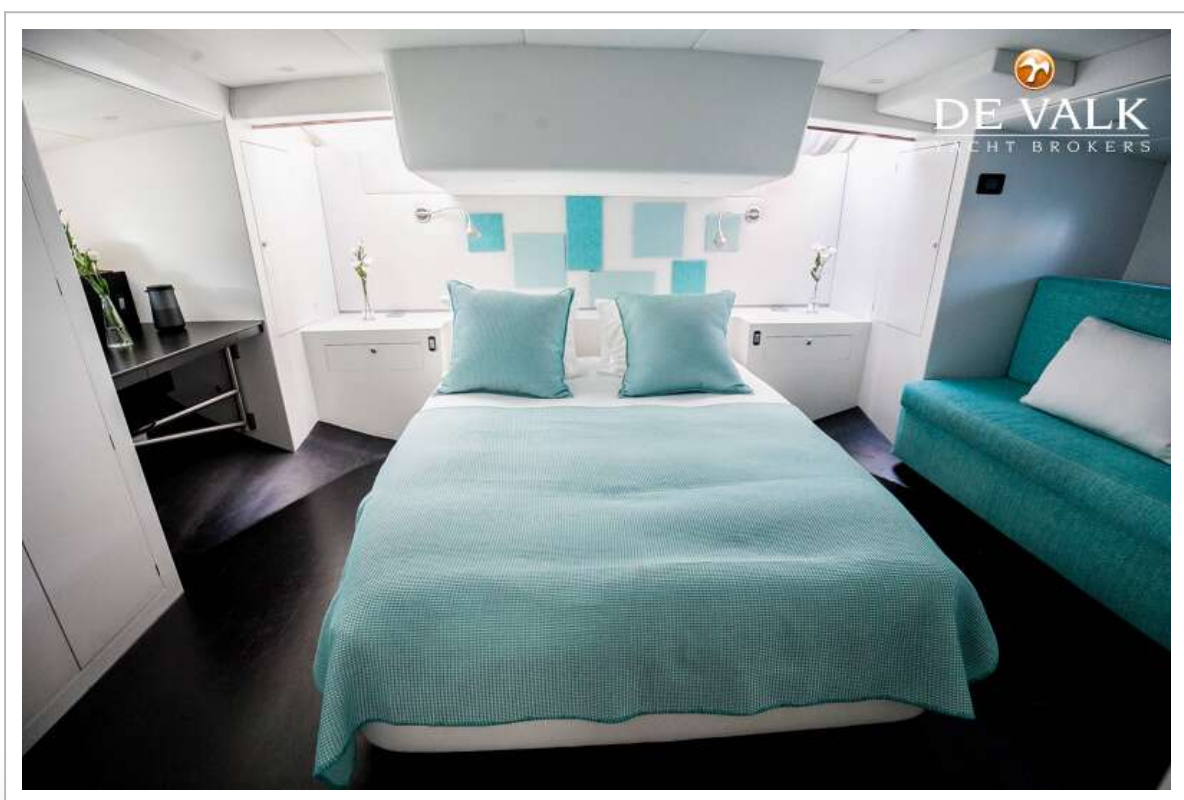
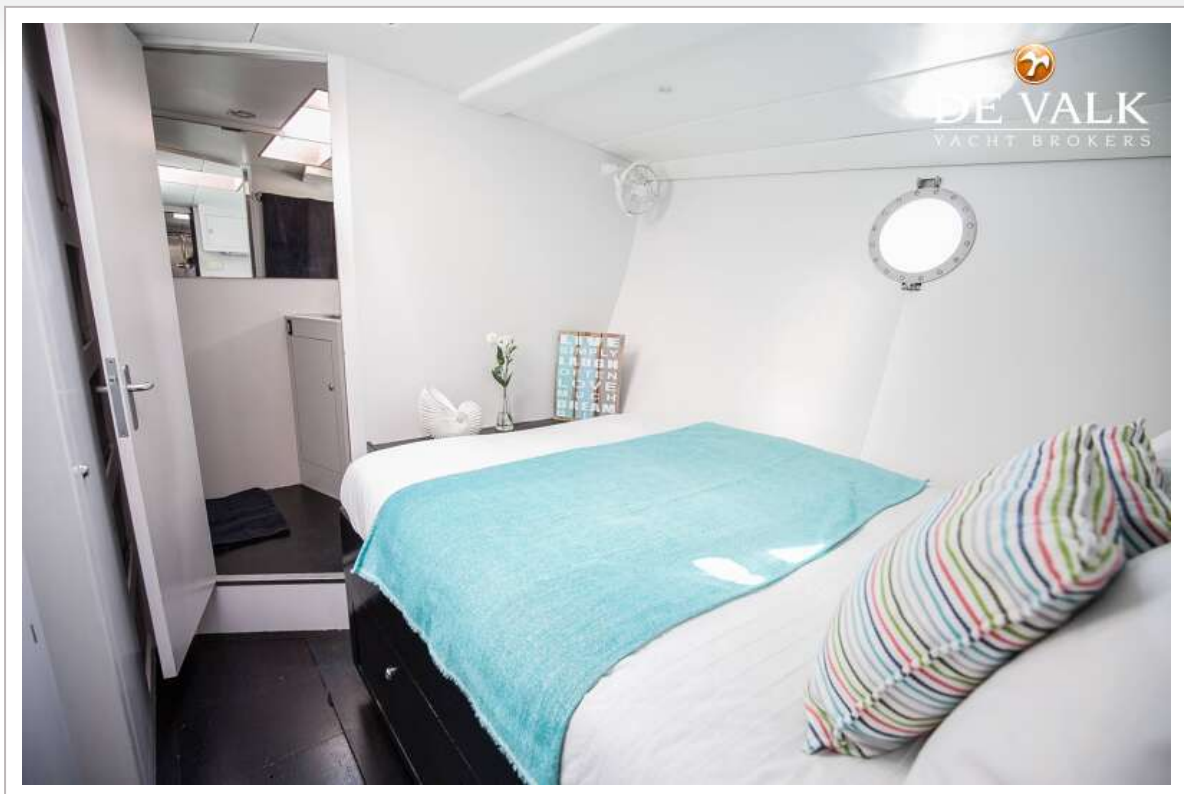




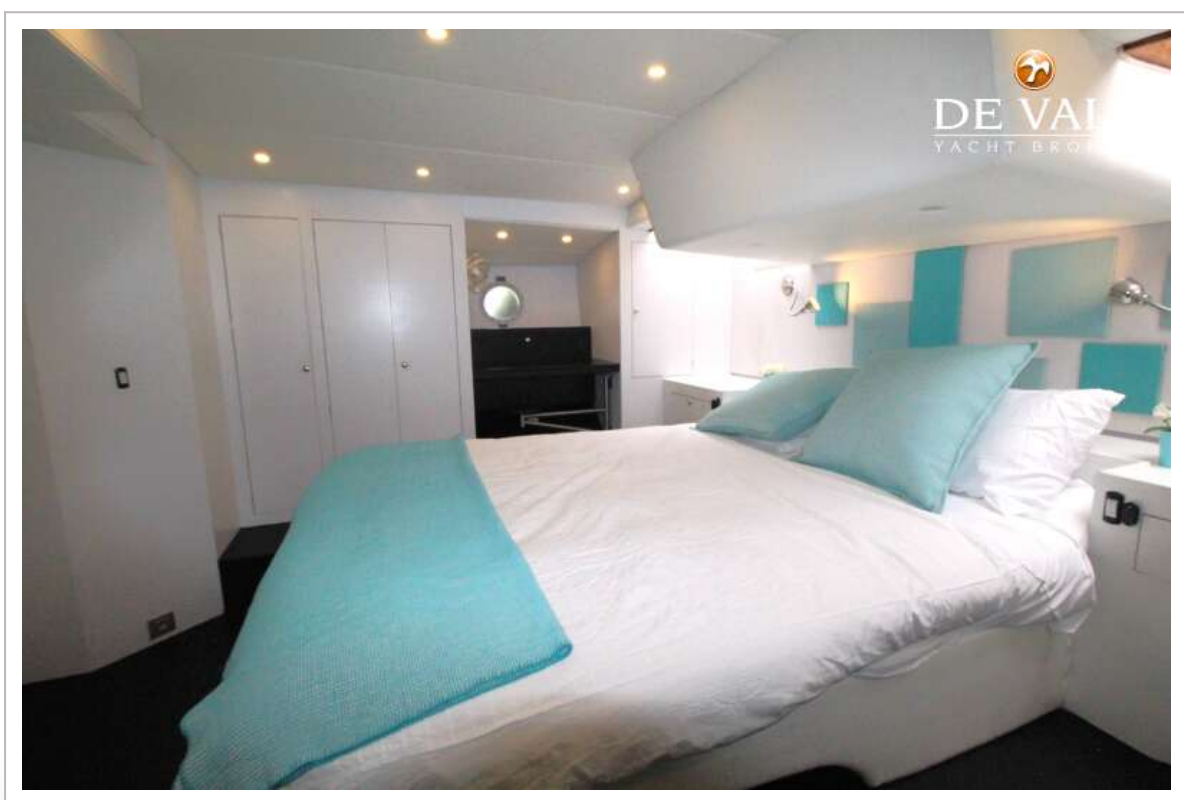
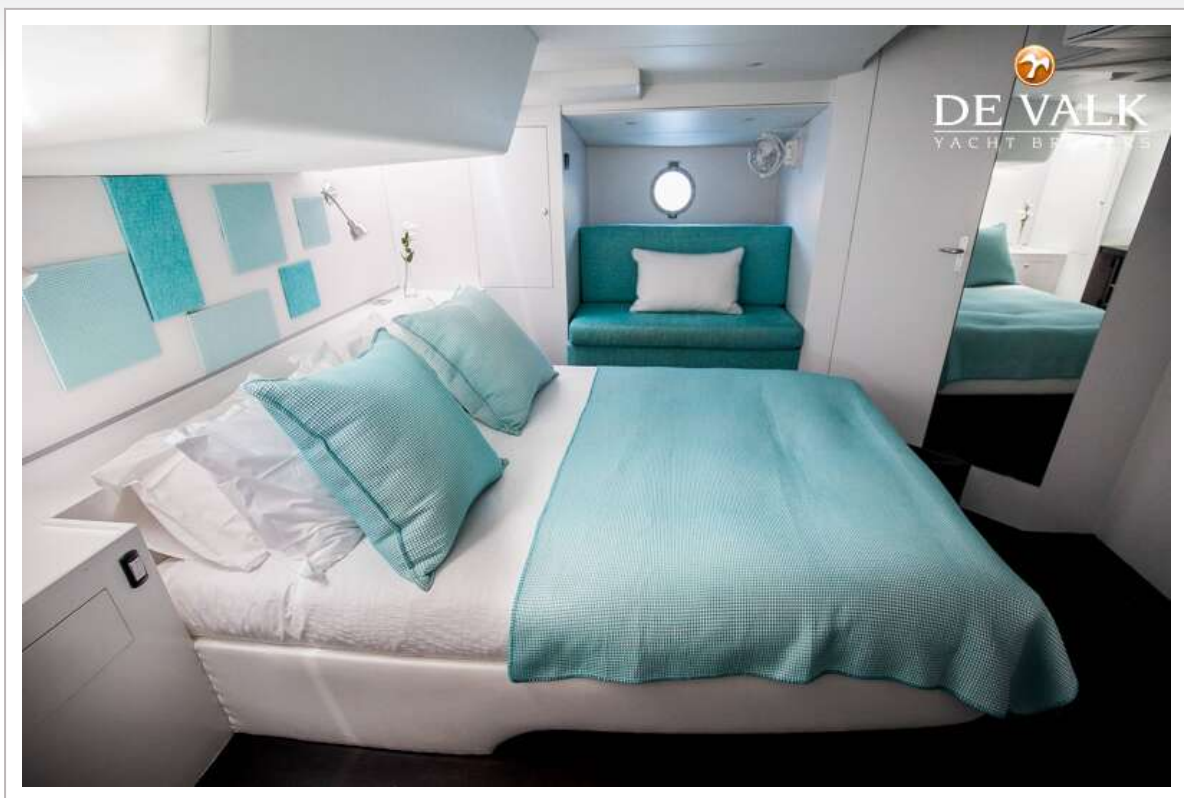
# NEREIDS CUSTOM BUILT YACHT 27 M



# NEREIDS CUSTOM BUILT YACHT 27 M

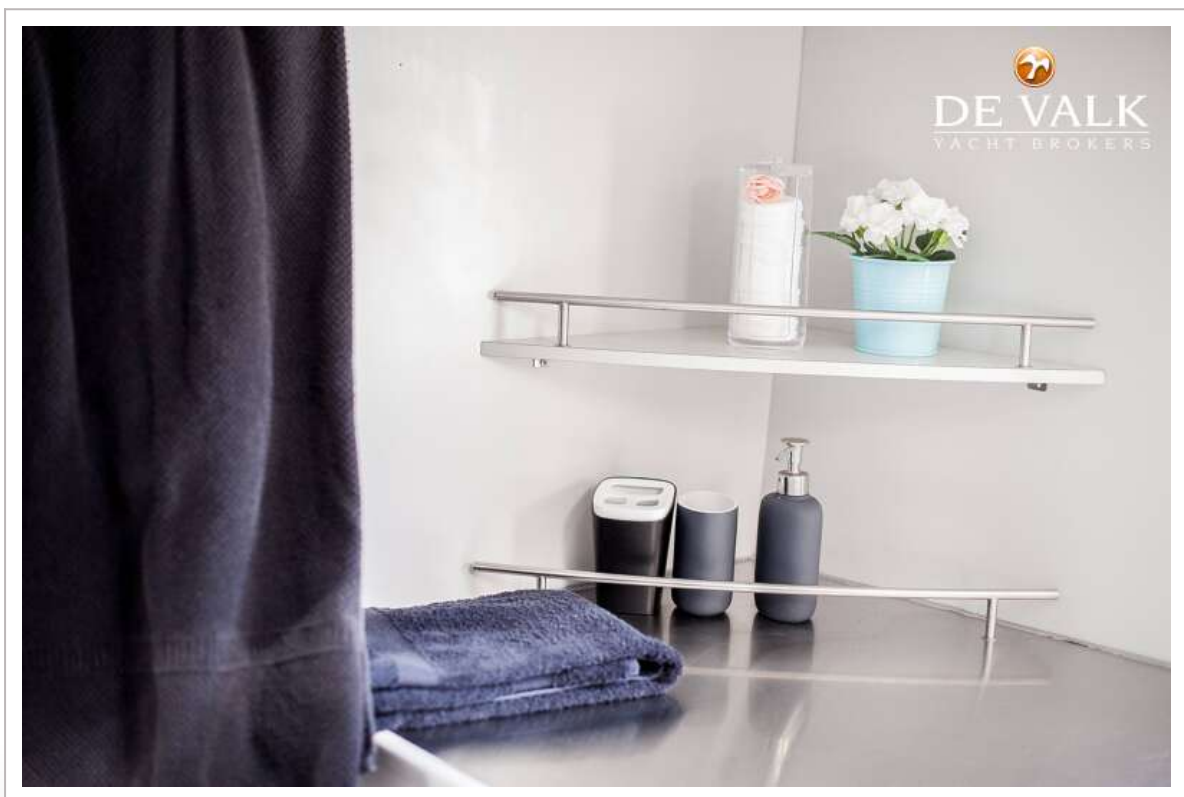
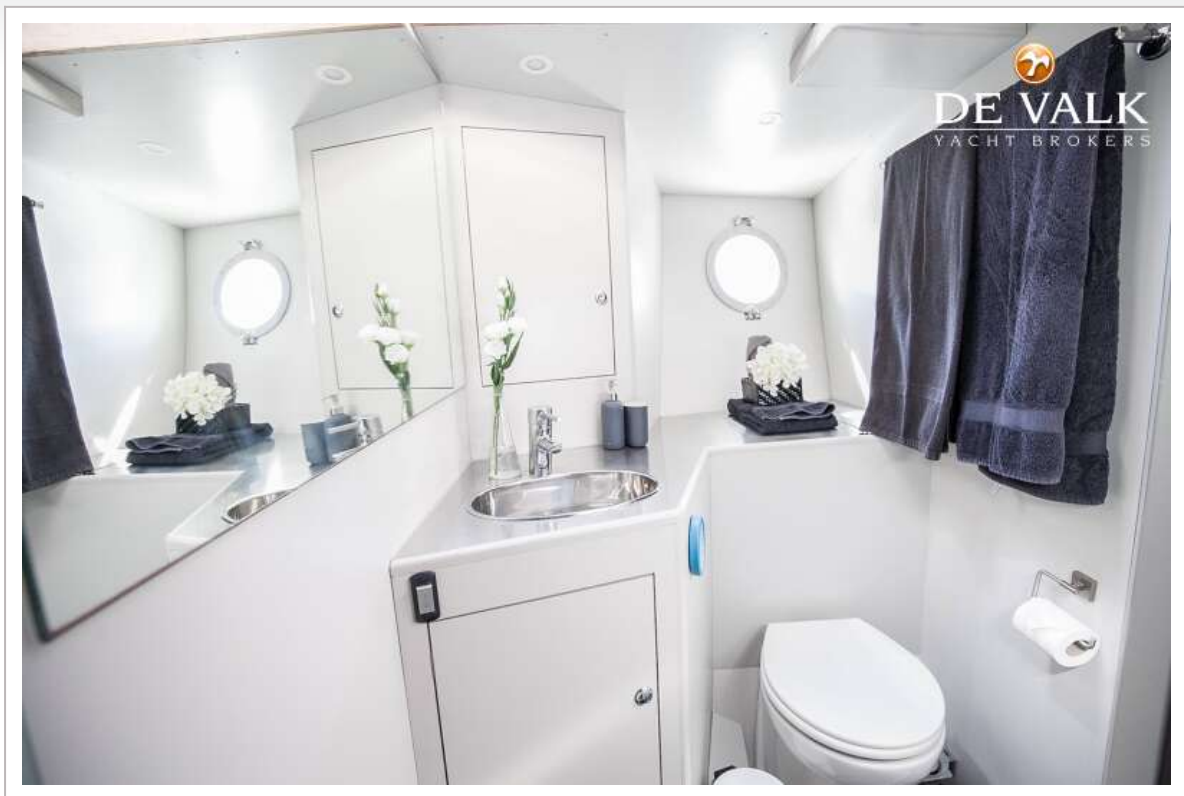


# NEREIDS CUSTOM BUILT YACHT 27 M

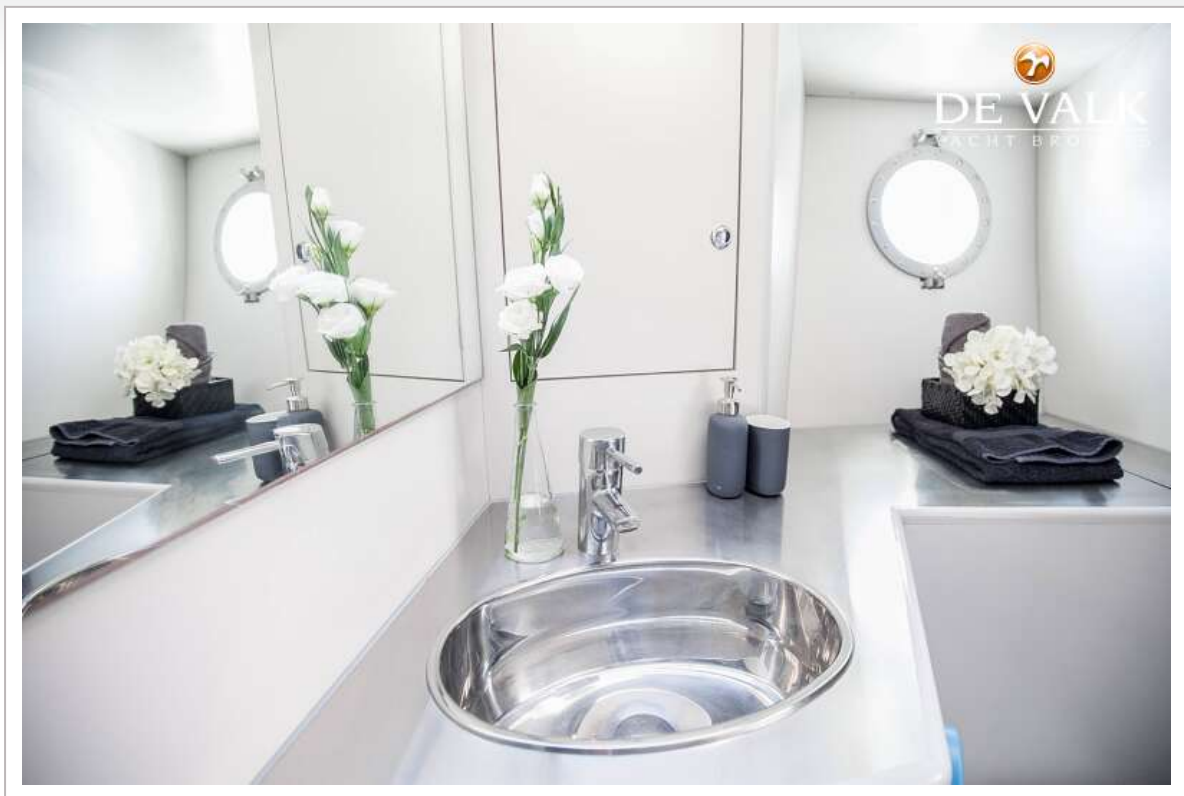




# NEREIDS CUSTOM BUILT YACHT 27 M

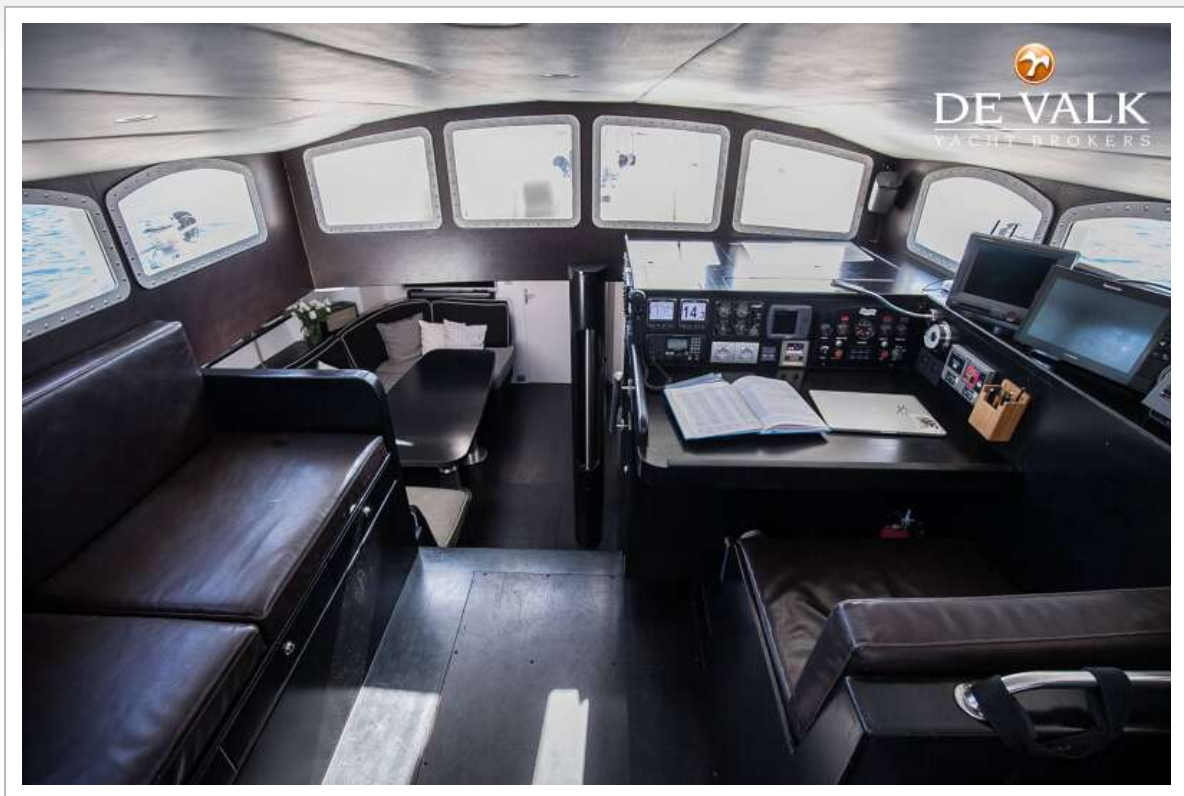


# NEREIDS CUSTOM BUILT YACHT 27 M

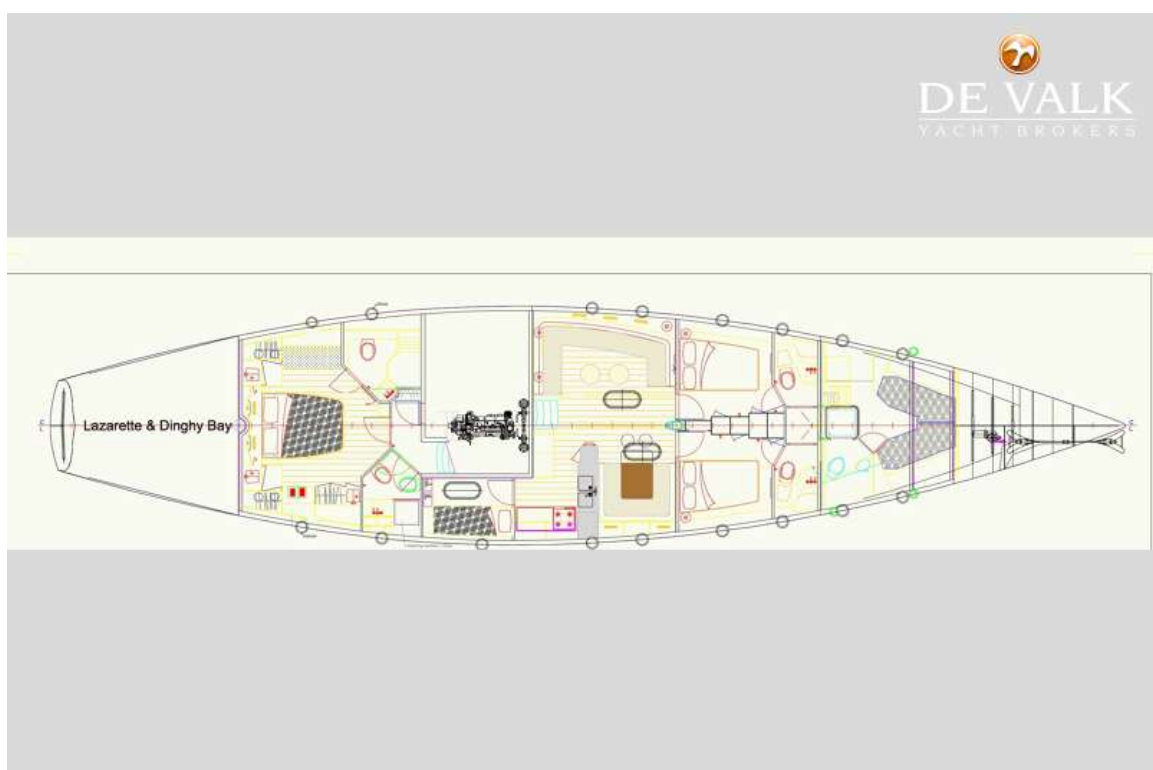




# NEREIDS CUSTOM BUILT YACHT 27 M



# NEREIDS CUSTOM BUILT YACHT 27 M





# NEREIDS CUSTOM BUILT YACHT 27 M

