



DE VALK
YACHT BROKERS



TERRANOVA 68



DE VALK
YACHT BROKERS

BROKER'S COMMENTS

Timeless Zen is hull # 4 of 8 built of this popular displacement Terranova explorer boat, which offers great cruising and comfort for 6 guests and 2 crew. The incredible layout has been thoroughly drawn to optimize comfort and seaworthiness. Equipped to top standards, including a 1.5-inch teak deck, Trac-zero speed stabilizers, heavy ground tackle for confident anchoring, and remote control when docking. From 2019, she is yearly upgraded and top-maintained. She is a live-aboard boat; all systems and functionalities are tried and tested, and due maintenances have been followed strictly.

Tue Simon Fasting

SPECIFICATIONS

Dimensions	19.40 x 5.90 x 1.60 (m)	Builder	Terra Nova Shipyards
Built	2008	Cabins	3
Material	GRP	Berths	6
Engine(s)	2 x MAN D2876LE404 diesel	Hp/Kw	2 x 630.00 (hp), 463.68 (kw)
Asking price	€ 1.050.000 (VAT Paid)	Lying	contact sales office

CONTACT

Sales office	De Valk Barcelona	Telephone	+34 932 202 825
Address	Barcelona region 08392 Barcelona ES	E-mail	barcelona@devalk.nl

DISCLAIMER

These particulars are given in good faith as supplied but cannot be guaranteed.



GENERAL

Model	TERRANOVA 68
Type	motor yacht
LOA (m)	19,40
Beam (m)	5,90
Draft (m)	1,60
Year built	2008
Builder	Terra Nova Shipyards
Country	Italy
Designer	Barracuda design
Displacement (t)	55
CE norm	A
Hull material	GRP
Hull colour	white
Hull shape	Displacement
Deck material	teak
Deck finish	teak 2 cm
Antifouling (year)	Micron 99 (2024)
Window frame	stainless steel
Window material	tempered glass
Flybridge	yes
Flybridge cover	2024
Flybridge suncover	2024
Radar arch	non collapsible
Fuel tank (litre)	6000 (fuel filtering system installed)
Level indicator (fuel tank)	Yes
Fuel daytank (litre)	1300
Level indicator (daytank)	Yes
Freshwater tank (litre)	700
Level indicator (freshwater)	Yes
Blackwater tank (litre)	700



Level indicator (blackwater)	Yes
Blackwater tank extraction	deck extraction + pump
Greywater tank (litre)	700
Level indicator (greywater)	Yes
Wheel steering	hydraulic Electric
Flybridge helm position	hydraulic
Extra info	New underwater lights 2024

ACCOMMODATION

Cabins	3
Berths	6
Crew cabin	Converted to storage space.
Crew berths	2
Interior	Birch and cherry
Floor	wood
Headroom saloon (m)	2.1
Air-conditioning	reverse cycle airco Velair Chiller i42 VSD/42.000BTU/H with converter
Chart table	Yes
Dining room	Yes
Dinette	Yes
Galley	Completely new 2020
Countertop	Stainless steel and corian
Sink	stainless steel Drinking water on tap (filtering system) installed by the sink
Cooker	induction
Oven	Yes
Extractor	Yes
Fridge	3 fridges total
Freezer	yes
Hot water system	220V New boiler 60L (2024)
Water pressure system	electrical 220 and 24V Jabsco



Dishwasher	Klarstein 2020
Coffee maker	Yes
Crockery	Yes
Owners cabin	double bed
Wardrobe	hanging/drawers/shelves
Bathroom	en suite
Toilet	en suite
Shower	en suite
Guest cabin 1	double bed
Wardrobe	hanging/drawers/shelves
Bathroom	en suite
Toilet	en suite
Shower	en suite
Guest cabin 2	twin single
Wardrobe	hanging/drawers/shelves
Bathroom	en suite
Toilet	en suite
Shower	en suite
Wardrobe	hanging/drawers/shelves
Bathroom	En suite
Toilet	en suite
Shower	en suite
Crew cabin(s)	1
Washing machine/dryer combi	Yes
Ironing facilities	Yes
Flybridge	Yes
Wet bar	Yes
Extra info	Boilers 1 x 200 L, 1 x 60 L

MACHINERY

No of engines	2
---------------	---



Make	MAN
Type	D2876LE404
HP	630
kW	463.68
Fuel	diesel
Maximum speed (kn)	15
Cruising speed (kn)	8
Consumption (l/hr)	30
Range (nm)	2000
Engine hours	3400
Engine cooling system	freshwater heat exchanger
Engine controls	electrical
Gearbox	hydraulic ZF
Engine controls	electrical
Bowthruster	hydraulic Sidepower
Sternthruster	hydraulic Sidepower
Exhaust	watercooled
Propeller type	fixed
Propeller blades	5
Electric bilge pump	Yes + main engines
Bilge alarm	Yes
Generator	wet exhaust 2 X Kohler 20KW each
Running hours generator	8575 - complete overhaul @ 6000h. Regular maintenance
Start battery	2 (2020)
Service battery	6 (2020)
Generator battery	2 (2020)
Battery monitor	yes
Battery charger	Mastervolt charge x 4
Inverter	Mastervolt 3000W x 2
Shorepower	with cable 220V
Watermaker	HP pressure 140L - new membrane 2024
Stabilizers	ABT-Trac-Star 250 - overhauled



Extra info	All pumps onboard have been replaced or refurbished recently
Extra info	Main service every year/400h on both engine by official MAN
Extra info	Range 3000 nm @ 6.3 knots

NAVIGATION

Compass	Yes
Compass on flybridge	Yes
Electric compass	Yes
Depth sounder	Raymarine
Log	Raymarine
Windset	Raymarine, wind, speed, direction
VHF	Raymarine AIS 650/VHF
VHF handheld	Yes
Autopilot	Raymarine EV1 Cours Computer/RM ACU 300 and G 120 control
Rudder angle indicator	yes
Radar	Raymarine 4 KW Magnum pedestal (2023) Raymarine Q. II doppler
GPS	Raymarine
Plotter	Raymarine Axiom XL 16 + Axiom Pro 12 RV + Axiom plus 12
Radar/GPS/plotter	Raymarine
Wifi antenna	yes
Electronis chart(s)	Navionix
AIS receiver	Raymarine
AIS transponder	Ratmarine
EPIRB	Yes
Camera	4 outside + 2 in the engine room
Searchlight	Yes
Extra info	Wireless remote control Dockmate for thrusters and engines

EQUIPMENT



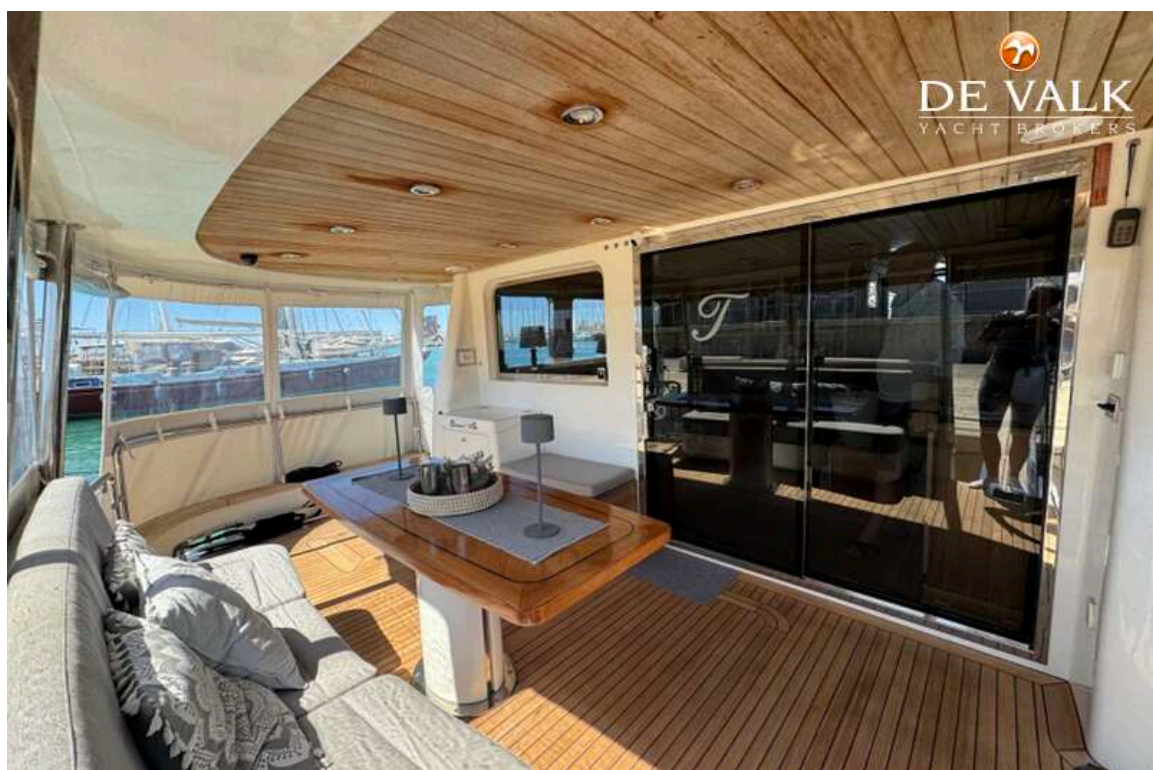
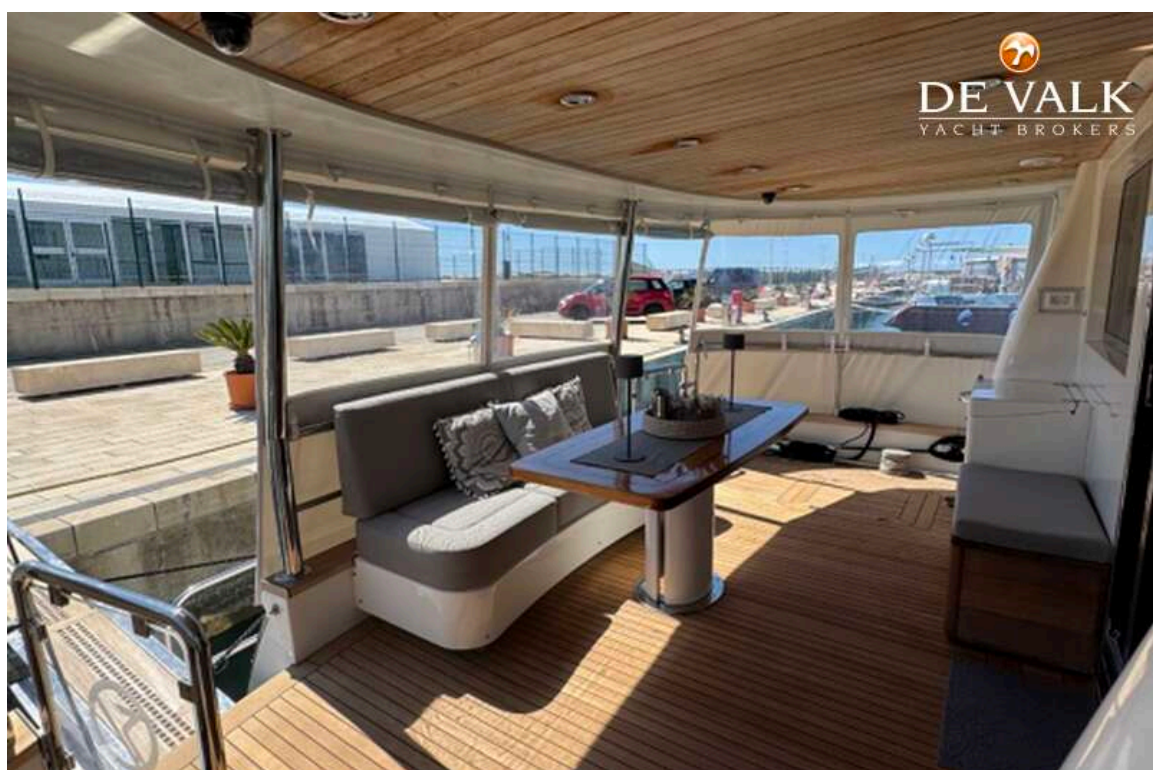
Bimini	Two separate tops, one hydraulic
Cockpit cushions	New upholstery all areas (2022)
Bathing platform	Yes
Boarding ladder	Yes
Gangway	Gondola 3.50 m
Deck shower	yes
Anchor	2 X Union type
Anchor chain	2 X 80 new chains 2025
Windlass	2 x Maxwell VWC 4000
Capstan	Aft: 2 x Maxwell VC 1500 Fwd: 2 x Maxwell VC 1500
Dinghy	Highfield 380 with Honda 40 HP (2021)
Deck crane	hydraulic Opacmare 1 x 1200 kg, 180 rotation
Life raft	Yes
Wiper	Yes
Alarm system	Yes
TV	TV in all cabins and salon + Apple TV
TV receiver	Yes
Radio-cd player	Yes
DVD player	Yes
iPod connection	Yes
Surround Sound System	In salon
Cockpit speakers	Sonos 4 on fly deck and 2 on aft deck
Speakers in cabin	Sonos in all cabins
Extinguisher in engine room	yes
Extra info	Paddelboard (2024)



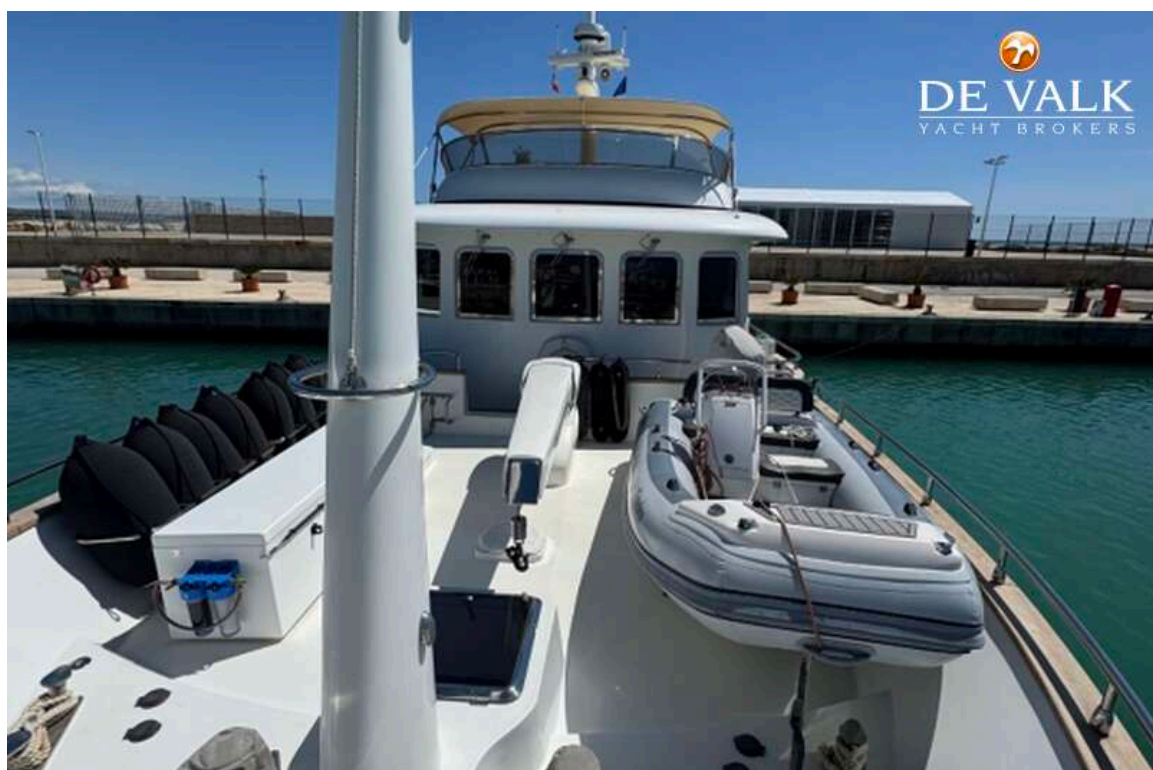
TERRANOVA 68



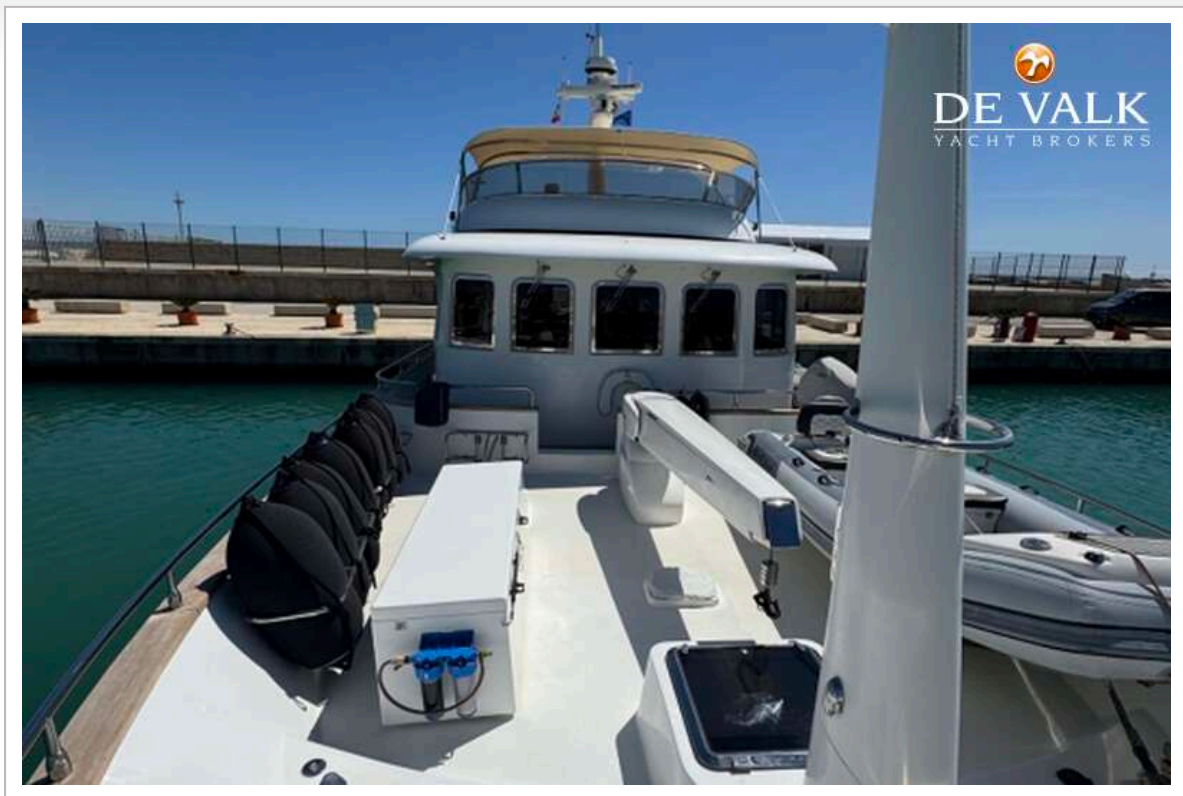
TERRANOVA 68

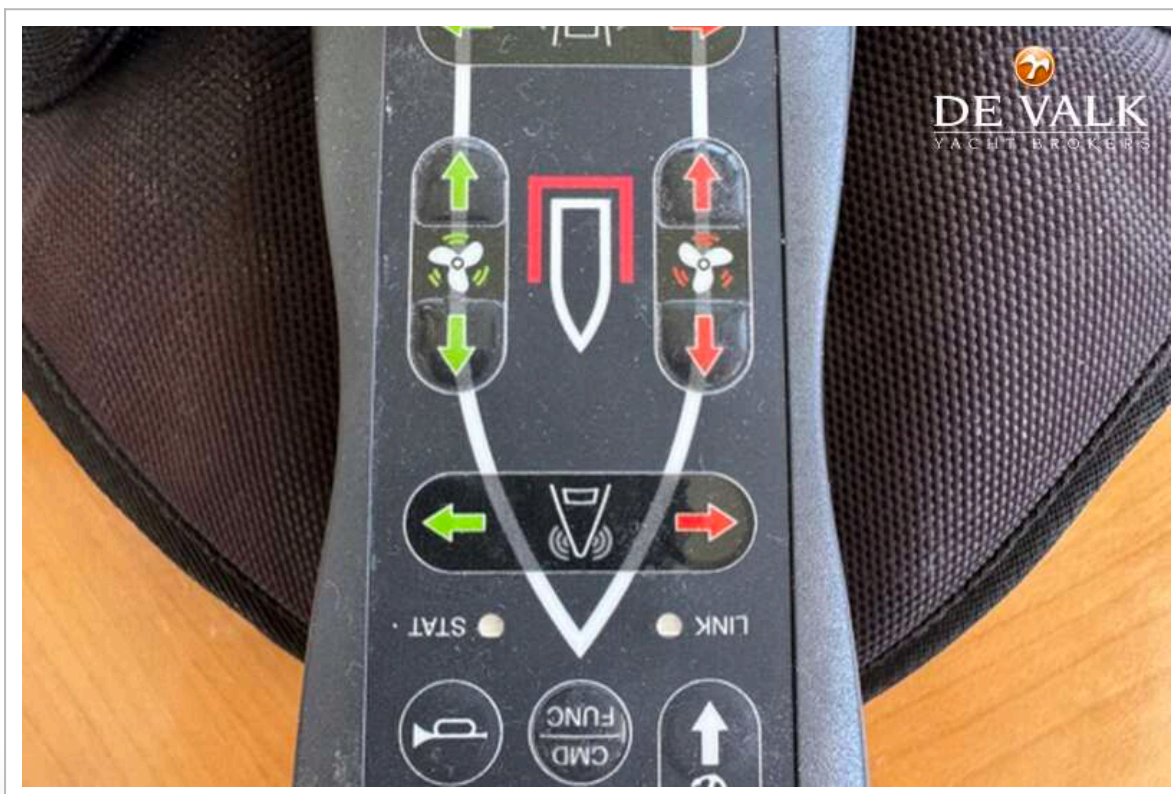


TERRANOVA 68



TERRANOVA 68

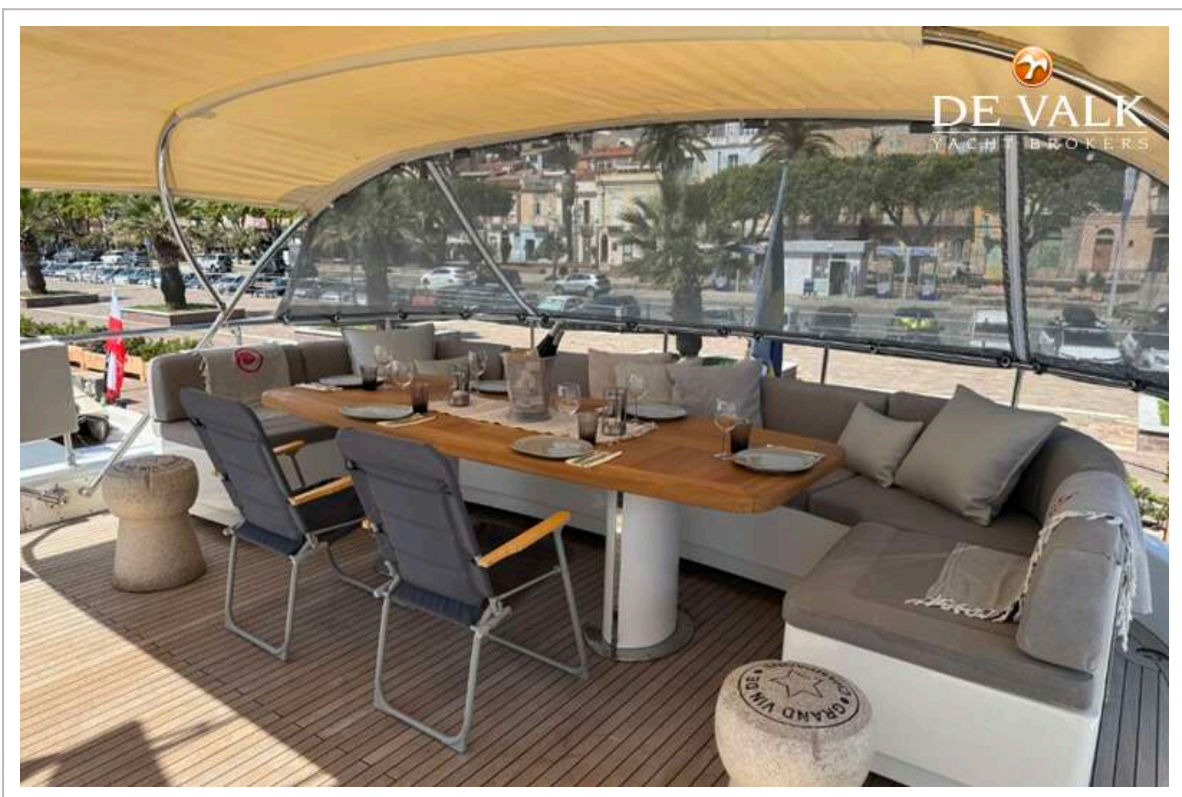




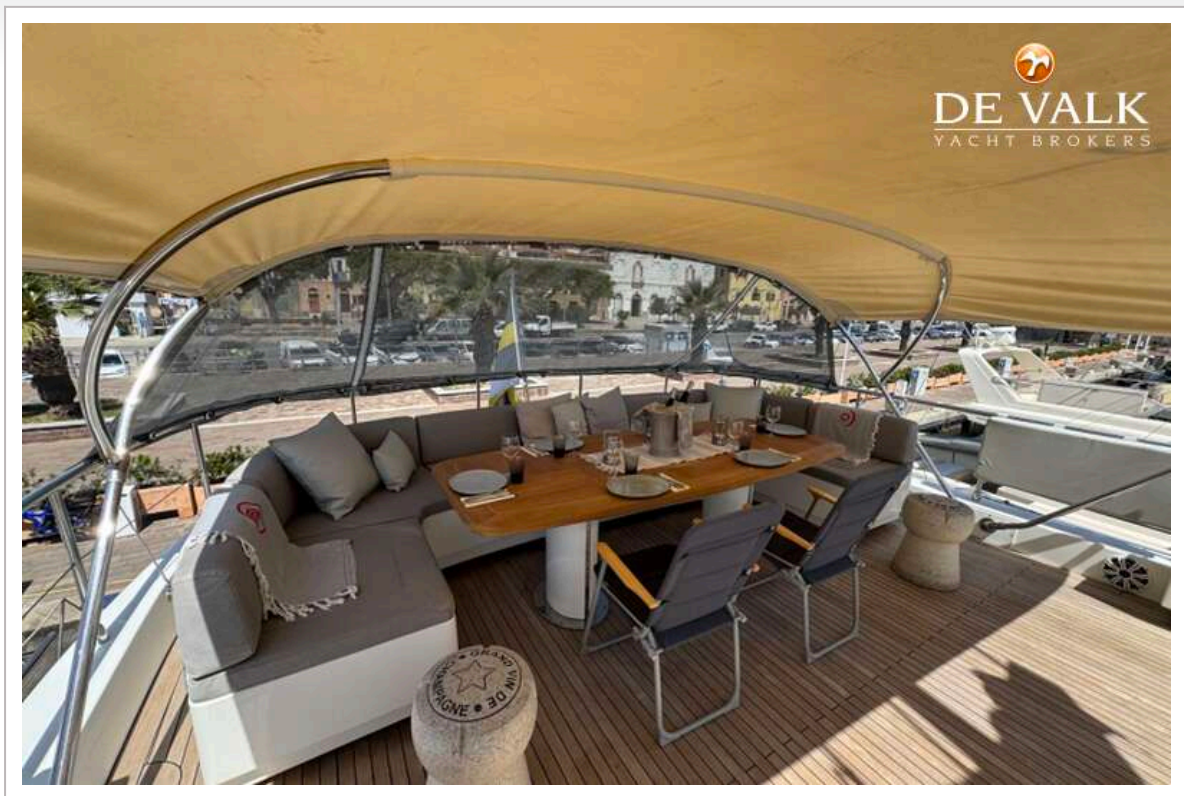
TERRANOVA 68



TERRANOVA 68



TERRANOVA 68



TERRANOVA 68



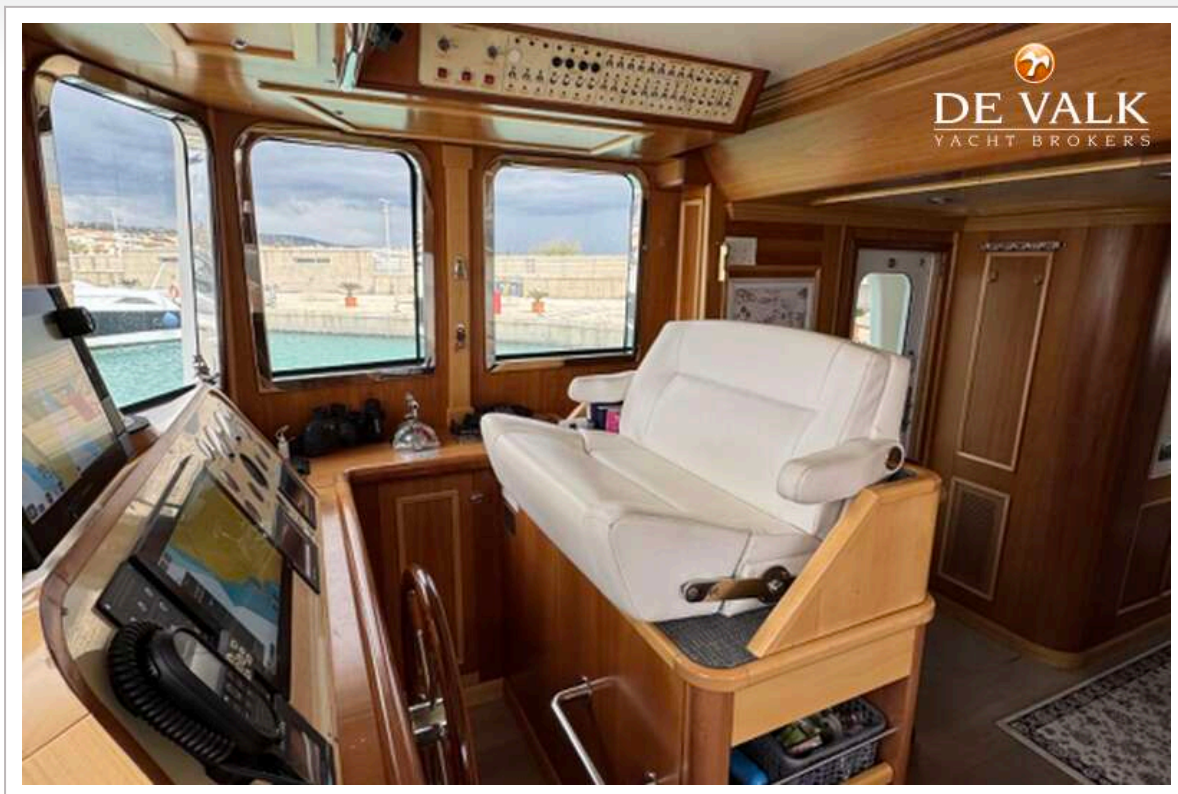
TERRANOVA 68



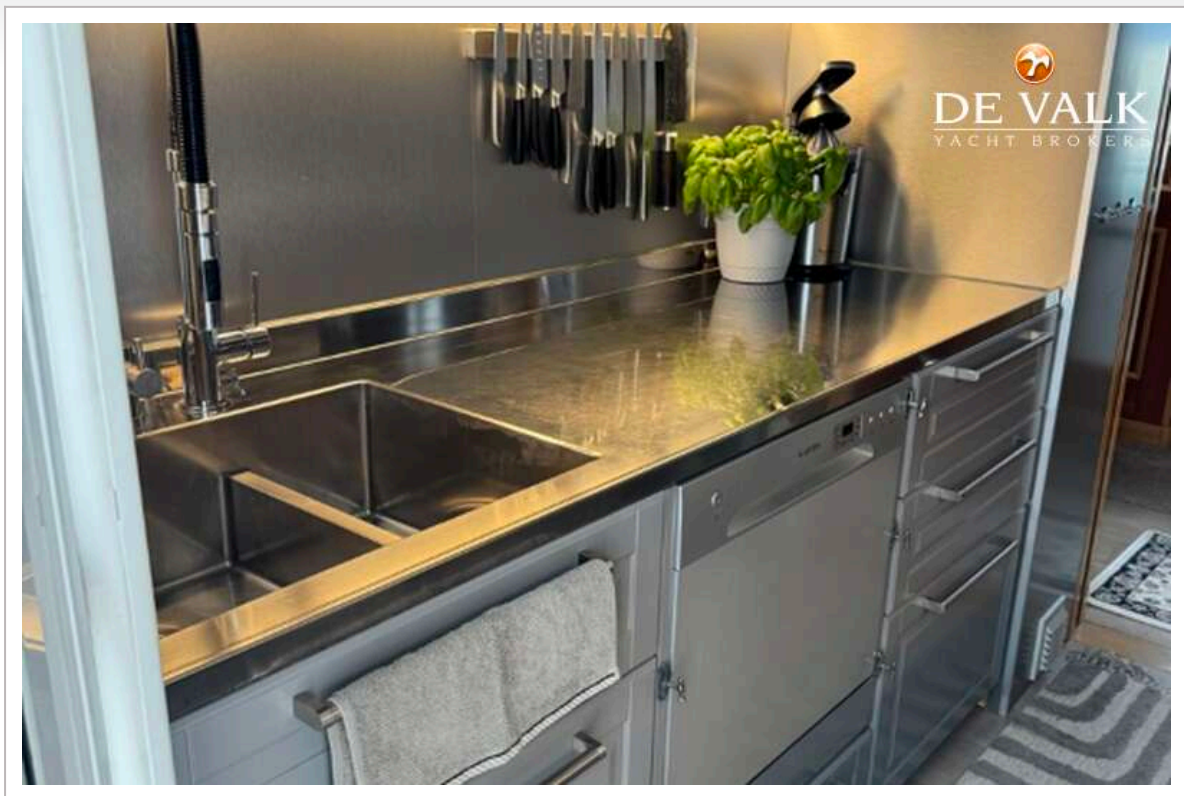
TERRANOVA 68



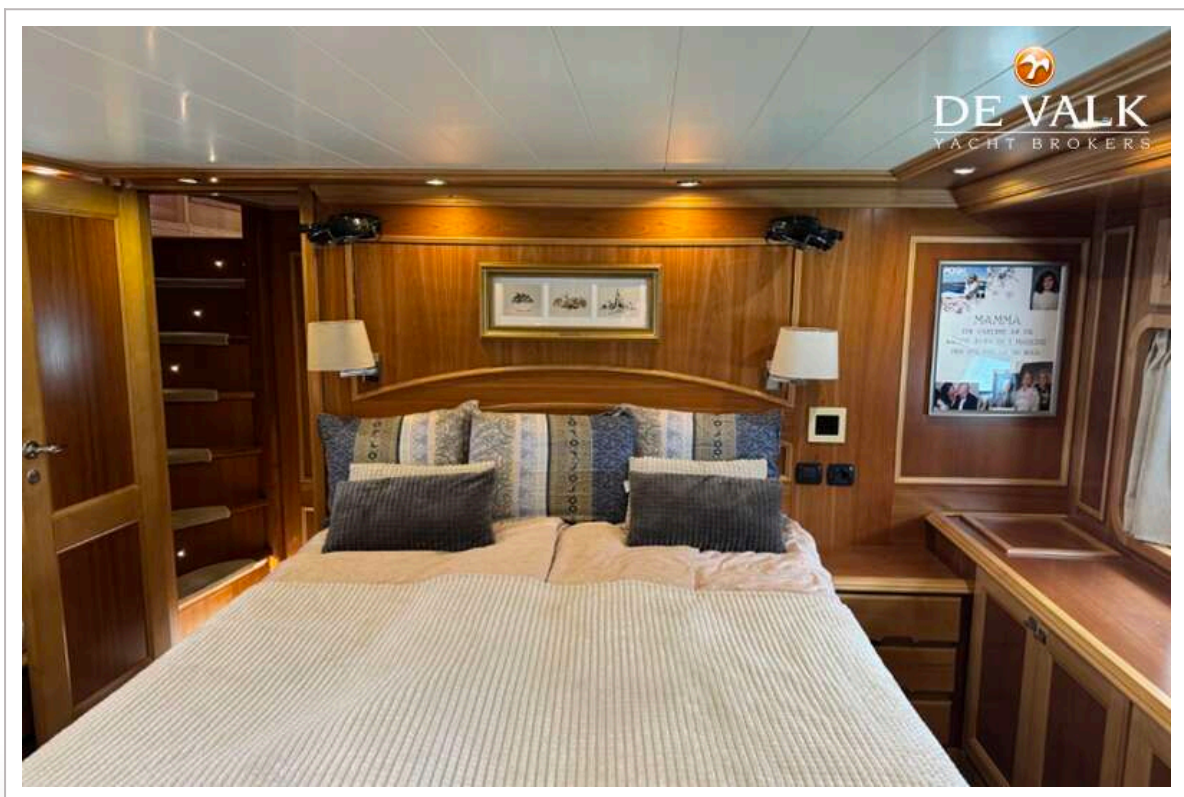
TERRANOVA 68



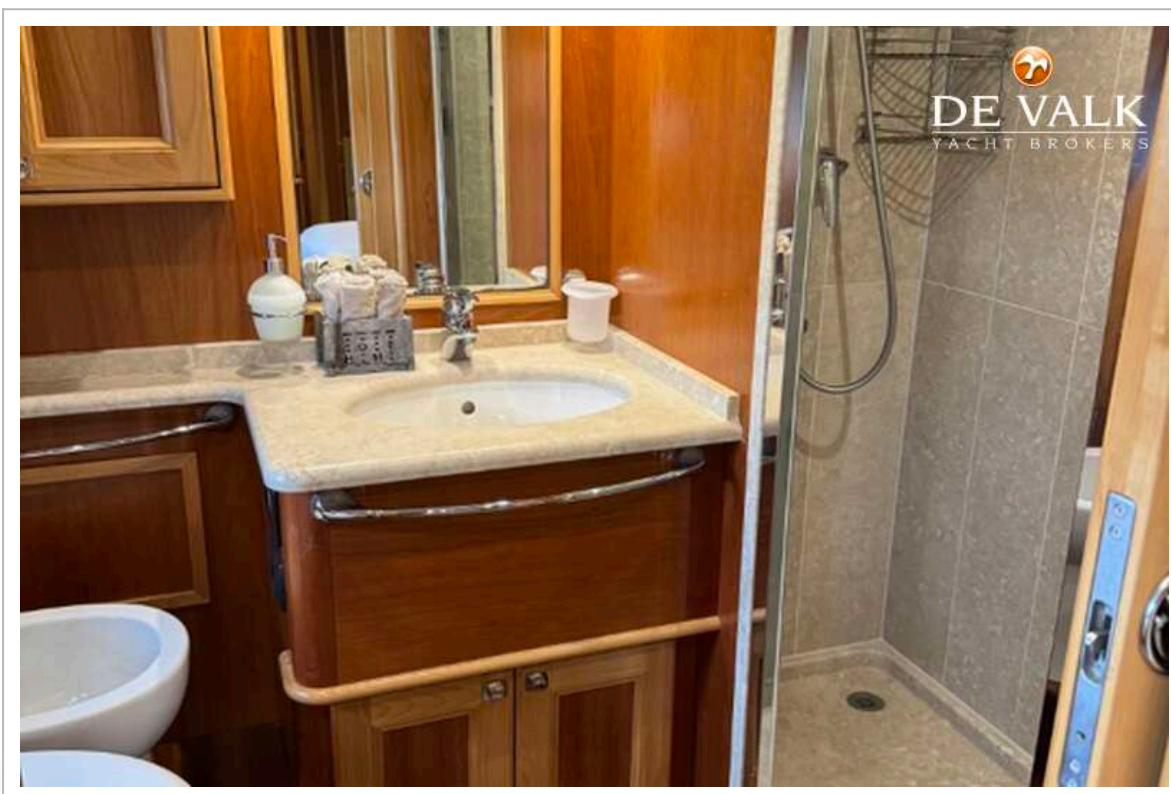
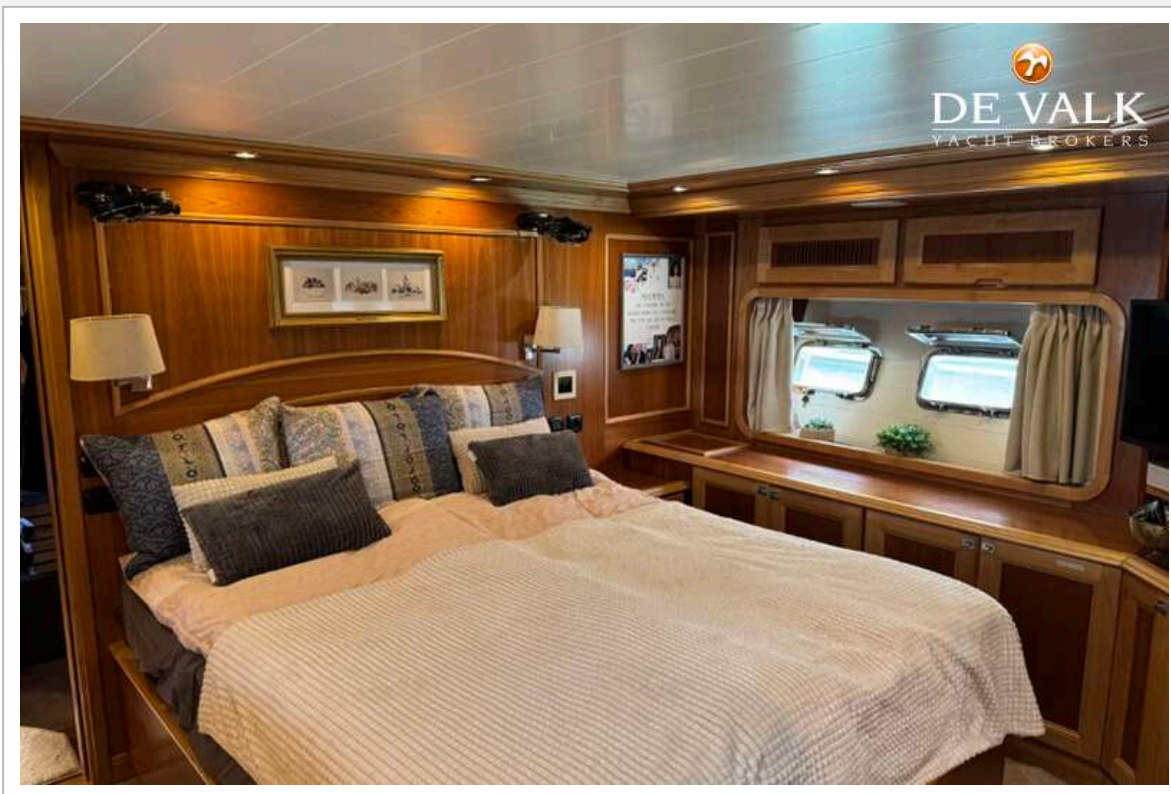
TERRANOVA 68



TERRANOVA 68



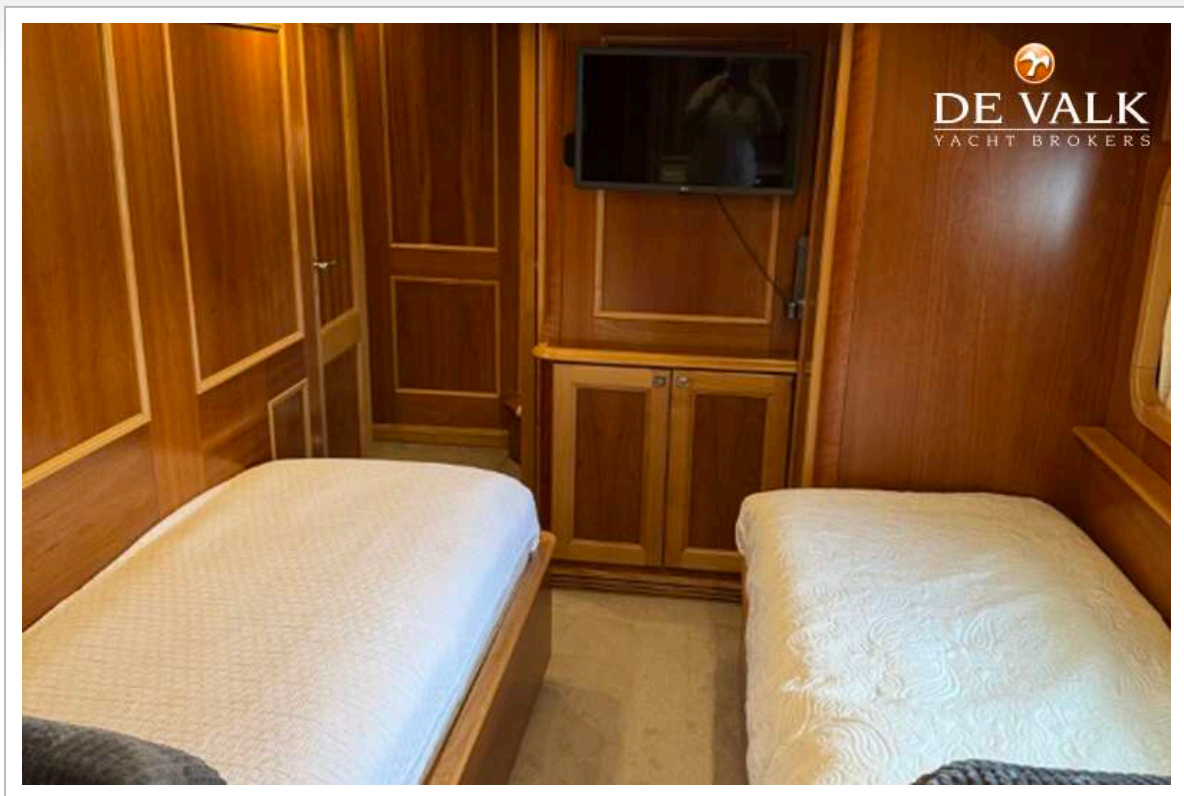
TERRANOVA 68

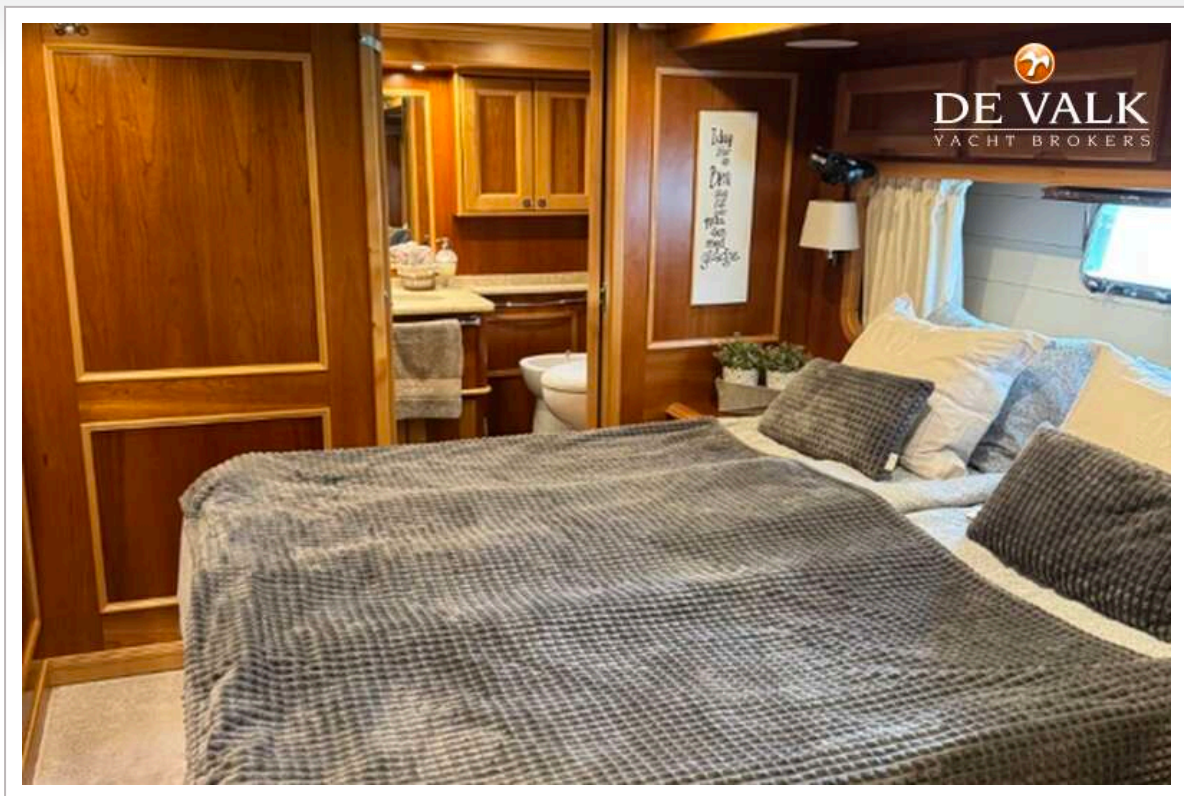


TERRANOVA 68

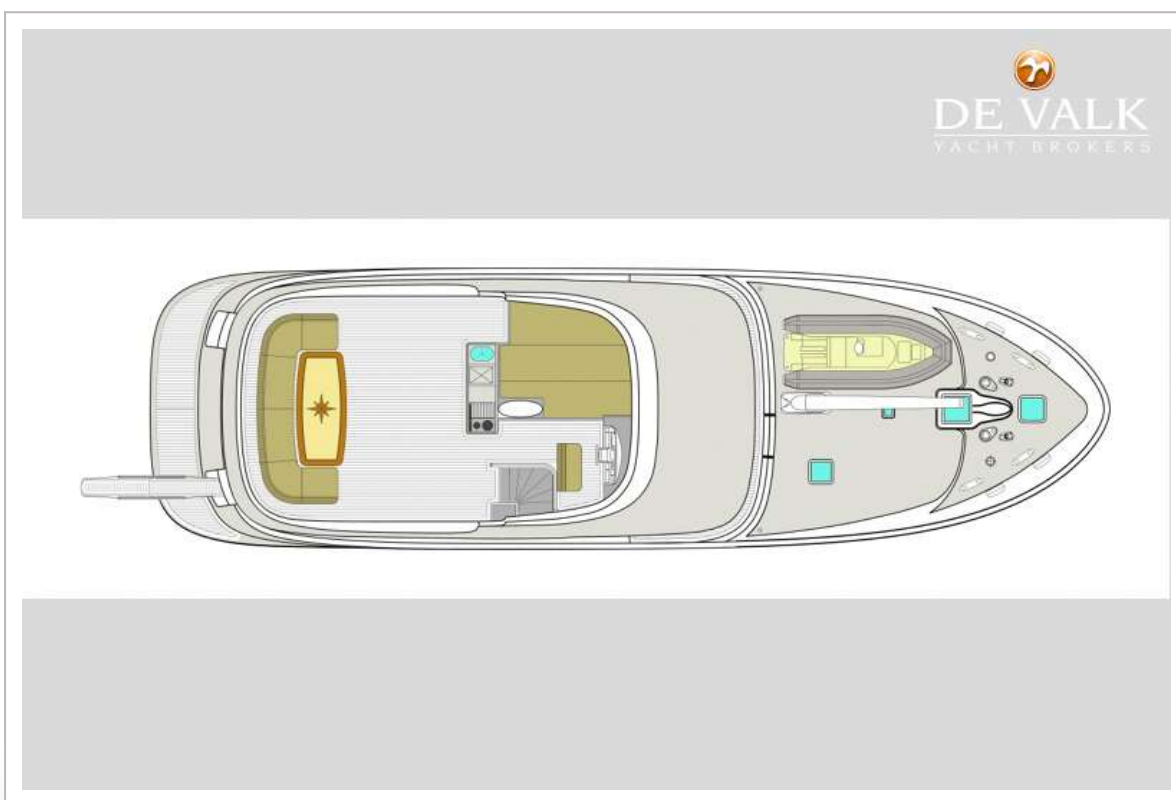


TERRANOVA 68





TERRANOVA 68



TERRANOVA 68

