



DE VALK
YACHT BROKERS



TERRANOVA T68



DE VALK
YACHT BROKERS

BROKER'S COMMENTS

Timeless Zen is hull # 4 of 8 built of this popular displacement Terranova explorer boat, which offers great cruising and comfort for 6 guests and 2 crew. The incredible layout has been thoroughly drawn to optimize comfort and seaworthiness. Equipped to top standards, including a 1.5-inch teak deck, Trac-zero speed stabilizers, heavy ground tackle for confident anchoring, and remote control when docking. From 2019, she is yearly upgraded and top-maintained. She is a live-aboard boat; all systems and functionalities are tried and tested, and due maintenances have been followed strictly.

Tue Simon Fasting

SPECIFICATIONS

Dimensions	19.40 x 5.90 x 1.60 (m)	Builder	Terra Nova Shipyards
Built	2008	Cabins	3
Material	GRP	Berths	6
Engine(s)	2 x MAN D2876LE404 diesel	Hp/Kw	2 x 630.00 (hp), 463.68 (kw)
Asking price	€ 1.050.000 (VAT Paid)	Lying	contact sales office

CONTACT

Sales office	De Valk Barcelona	Telephone	+34932202825
Address	Barcelona region Barcelona Spain	E-mail	barcelona@devalk.nl

DISCLAIMER

These particulars are given in good faith as supplied but cannot be guaranteed.



GENERAL

Model	TERRANOVA T68
Type	motor yacht
LOA (m)	19,40
Beam (m)	5,90
Draft (m)	1,60
Year built	2008
Builder	Terra Nova Shipyards
Country	Italy
Designer	Barracuda design
Displacement (t)	60
CE norm	A
Hull material	GRP
Hull shape	Displacement
Deck material	teak
Deck finish	teak 2 cm
Antifouling (year)	Micron 99 (2024)
Window frame	aluminium
Flybridge cover	2024
Flybridge suncover	2024
Radar arch	non collapsible
Fuel tank (litre)	6000
Level indicator (fuel tank)	Yes
Fuel daytank (litre)	1300
Level indicator (daytank)	Yes
Freshwater tank (litre)	700
Level indicator (freshwater)	Yes
Blackwater tank (litre)	350
Level indicator (blackwater)	Yes
Greywater tank (litre)	700
Level indicator (greywater)	Yes



Wheel steering	hydraulic Electric
Flybridge helm position	hydraulic
Extra info	New underwater lights 2024

ACCOMMODATION

Cabins	3
Berths	6
Crew cabin	1
Crew berths	2
Interior	teak
Floor	wood
Headroom saloon (m)	2.1
Air-conditioning	reverse cycle airco Velair Chiller i42 VSD/42.000BTU/H with converter
Chart table	Yes
Dining room	Yes
Dinette	Yes
Galley	Completely new 2020
Sink	stainless steel
Cooker	induction
Oven	Yes
Extractor	Yes
Microwave	Yes
Fridge	3 fridges total
Freezer	yes
Hot water system	220V New boiler 60L (2024)
Water pressure system	electrical
Dishwasher	New 2020
Coffee maker	Yes
Crockery	Yes
Owners cabin	double bed



Wardrobe	hanging/drawers/shelves
Bathroom	en suite
Toilet	en suite
Shower	en suite
Guest cabin 1	double bed
Wardrobe	hanging/drawers/shelves
Bathroom	en suite
Toilet	en suite
Shower	en suite
Guest cabin 2	twin single
Wardrobe	hanging/drawers/shelves
Bathroom	en suite
Toilet	en suite
Shower	en suite
Wardrobe	hanging/drawers/shelves
Bathroom	En suite
Toilet	en suite
Shower	en suite
Crew cabin(s)	1
Bathroom (crew)	1
Toilet (crew)	1
Shower (crew)	1
Washing machine/dryer combi	Yes
Ironing facilities	Yes
Flybridge	Yes
Wet bar	Yes
Extra info	Boilers 1 x 200 L, 1 x 60 L

MACHINERY

No of engines	2
Make	MAN



TERRANOVA T68

Type	D2876LE404
HP	630
kW	463.68
Fuel	diesel
Maximum speed (kn)	15
Cruising speed (kn)	8
Consumption (l/hr)	30
Range (nm)	2000
Engine hours	3400
Engine cooling system	freshwater heat exchanger
Engine controls	electrical
Gearbox	hydraulic ZF
Engine controls	electrical
Bowthruster	hydraulic Sidepower
Sternthruster	hydraulic Sidepower
Exhaust	watercooled
Propeller type	fixed
Propeller blades	5
Manual bilge pump	Yes
Electric bilge pump	Yes
Bilge alarm	Yes
Generator	wet exhaust 2 X Kohler 20KW each
Running hours generator	8575 - complete overhaul @ 6000h. Regular maintenance
Start battery	2 (2020)
Service battery	6 (2020)
Generator battery	2 (2020)
Battery charger	Mastervolt charge x 4
Inverter	Mastervolt 3000W x 2
Watermaker	HP pressure 140L - new membrane 2024
Stabilizers	ABT-Trac-Star 250 - overhauled
Extra info	All pumps onboard have been replaced or refurbished recently
Extra info	Main service every year/400 H, on both engine by official MAN



NAVIGATION

Compass	Yes
Compass on flybridge	Yes
Electric compass	Yes
Depth sounder	Raymarine
Log	Raymarine
Windset	Raymarine, wind, speed, direction
VHF	Raymarine AIS 650/VHF
VHF handheld	Yes
Autopilot	Raymarine EV1 Cours Computer/RM ACU 300 and G 120 control
Radar	Raymarine 4 KW Magnum pedestal (2023) Raymarine Q. II doppler
GPS	Raymarine
Plotter	Raymarine Axiom XL 16 + Axiom Pro 12 RV + Axiom plus 12
Radar/GPS/plotter	Raymarine
Wifi antenna	yes
Electronic chart(s)	Navionix
EPIRB	Yes
Camera	4 outside + 2 in the engine room
Searchlight	Yes
Extra info	Wireless remote control Dockmate

EQUIPMENT

Bimini	Two separate tops, one hydraulic
Cockpit cushions	New upholstery all areas (2022)
Bathing platform	Yes
Boarding ladder	Yes
Gangway	Gondola 3.50 m
Deck shower	yes
Windlass	2 x Maxwell VWC 4000



TERRANOVA T68

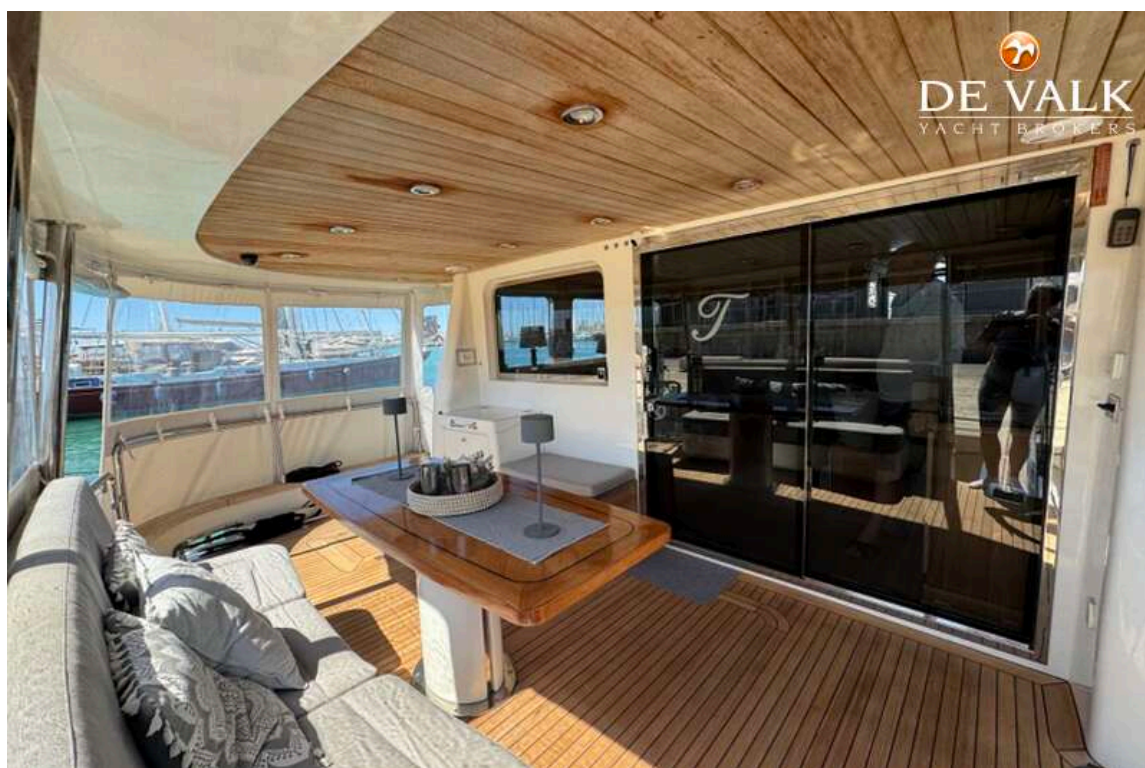
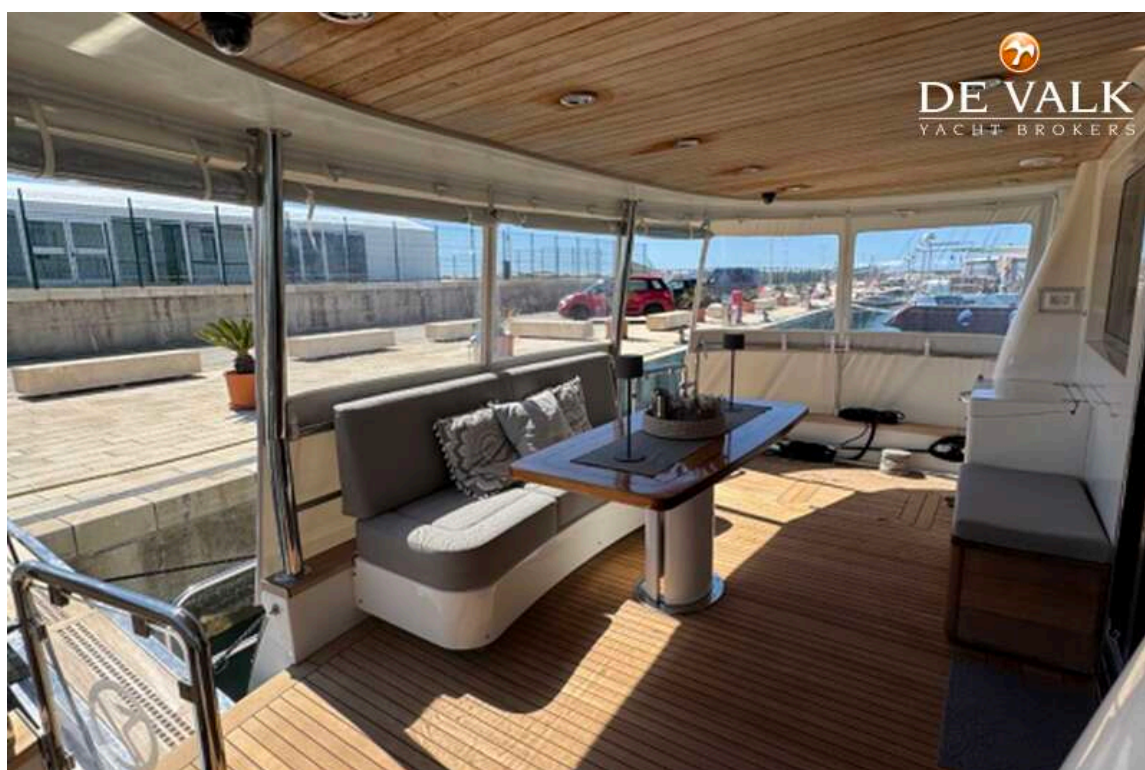
Capstan	Aft: 2 x Maxwell VC 1500 Fwd: 2 x Maxwell VC 1500
Dinghy	Highfield 380 with Honda 40 HP (2021)
Deck crane	hydraulic Opacmare 1 x 1200 kg, 180 rotation
Life raft	Yes
Wiper	Yes
Alarm system	Yes
TV	TV in all cabins and salon + Apple TV
TV receiver	Yes
Satellite	Yes
Radio-cd player	Yes
DVD player	Yes
iPod connection	Yes
Surround Sound System	Yes
Cockpit speakers	Sonos
Speakers in salon	Sonos
Speakers in cabin	Sonos
Extinguisher in engine room	yes
Extra info	Paddelboard (2024)



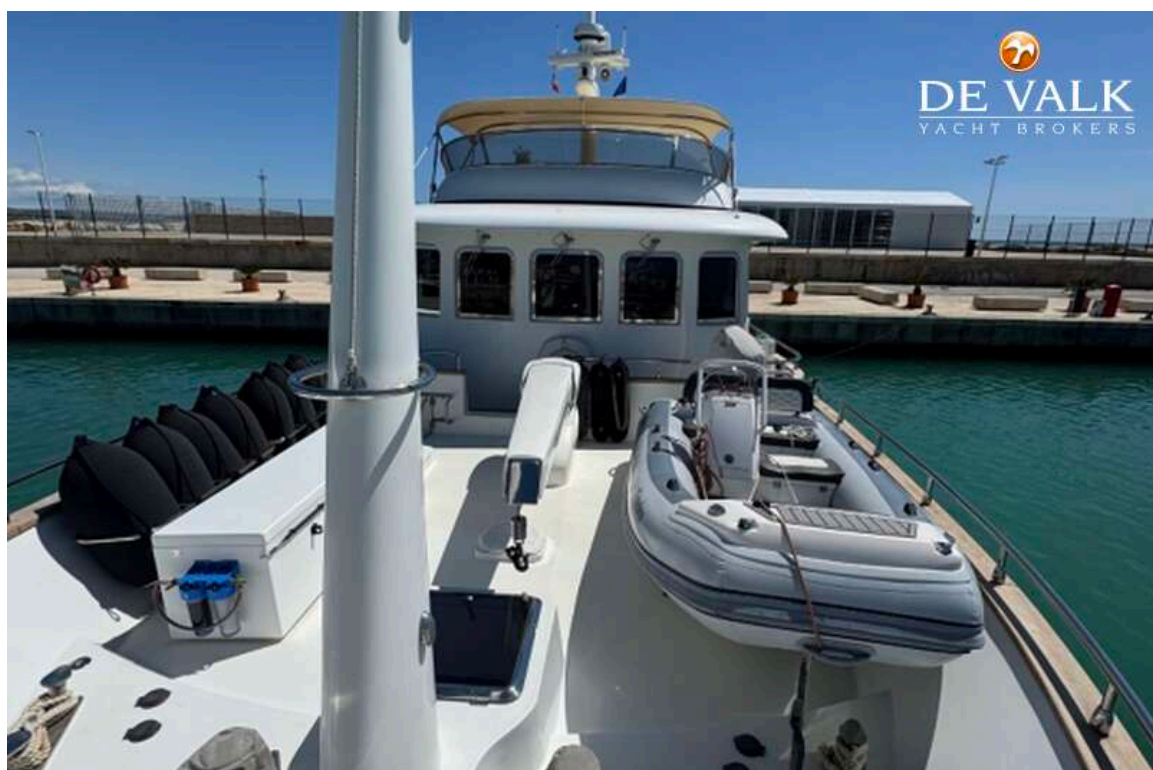
TERRANOVA T68



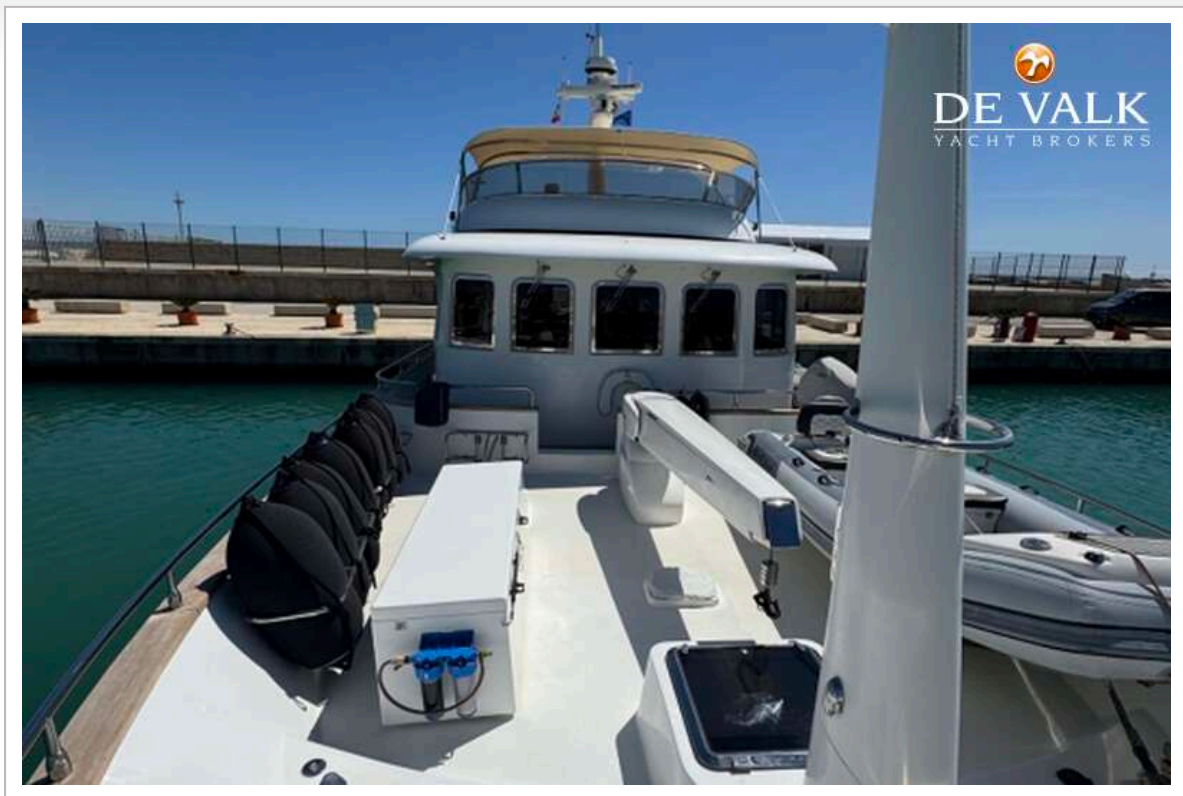
TERRANOVA T68



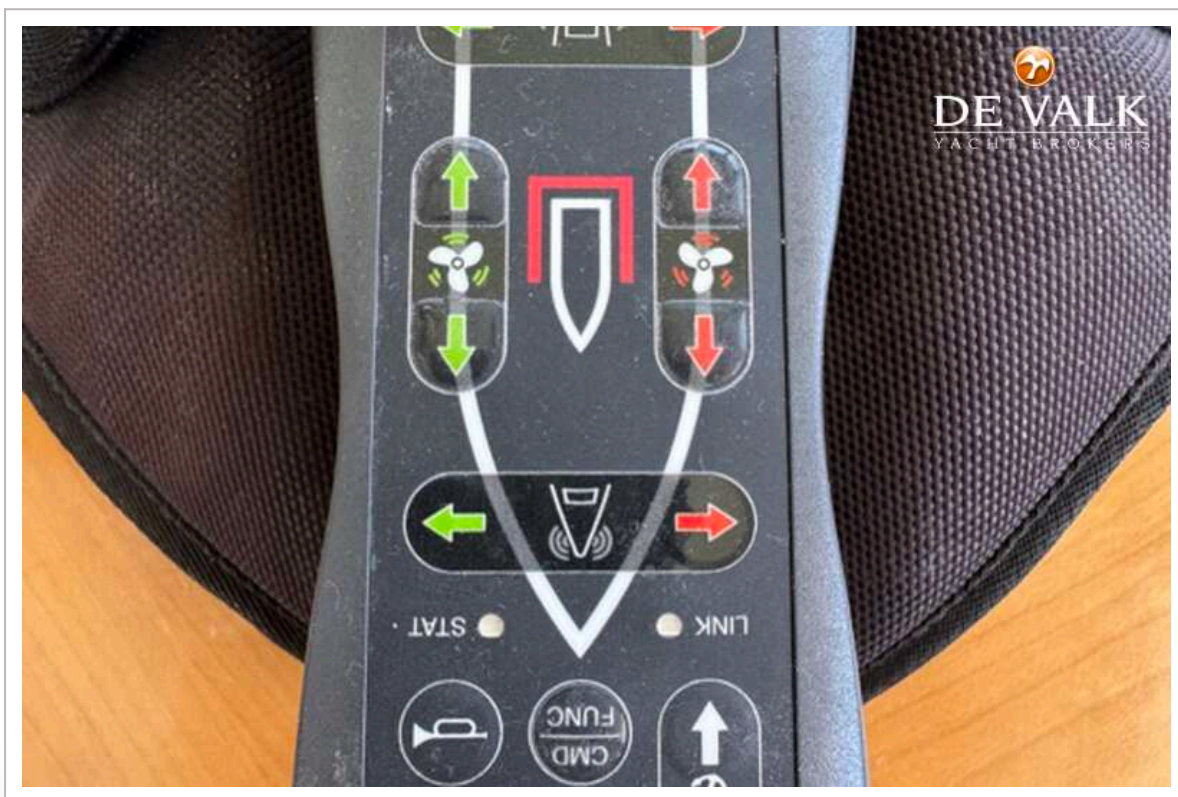
TERRANOVA T68



TERRANOVA T68



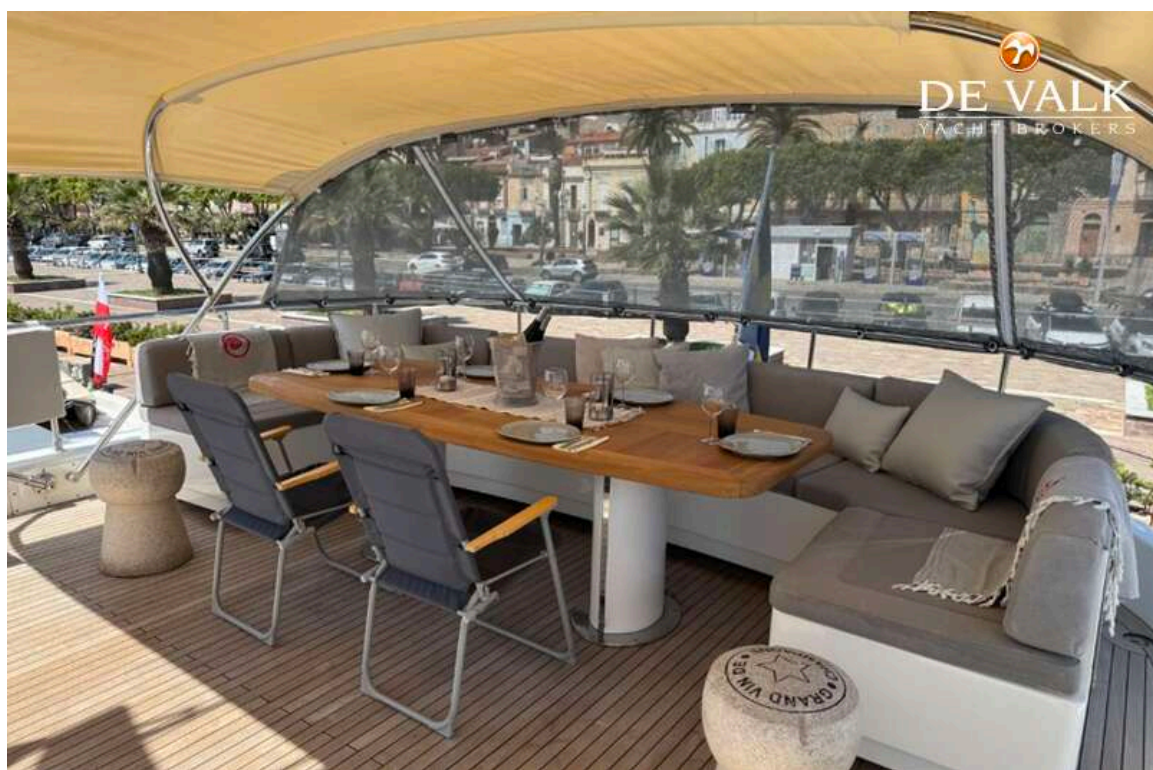
TERRANOVA T68



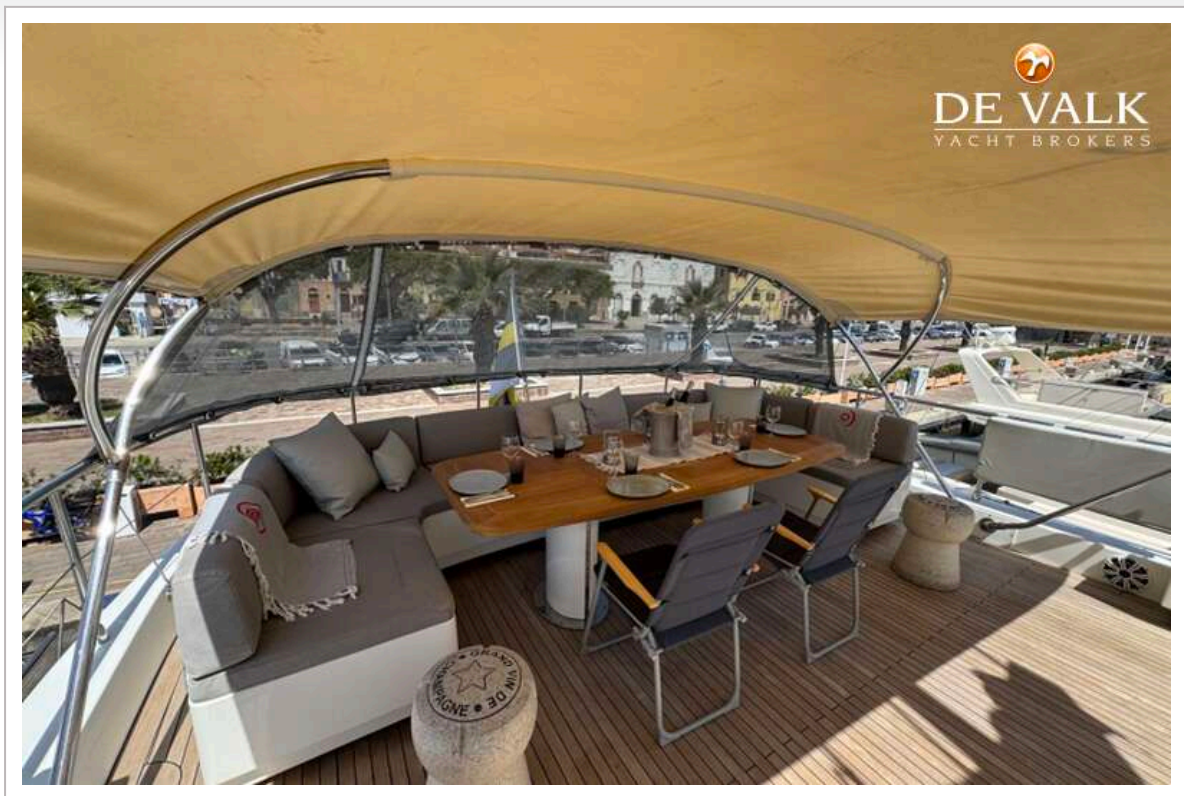
TERRANOVA T68



TERRANOVA T68



TERRANOVA T68



TERRANOVA T68



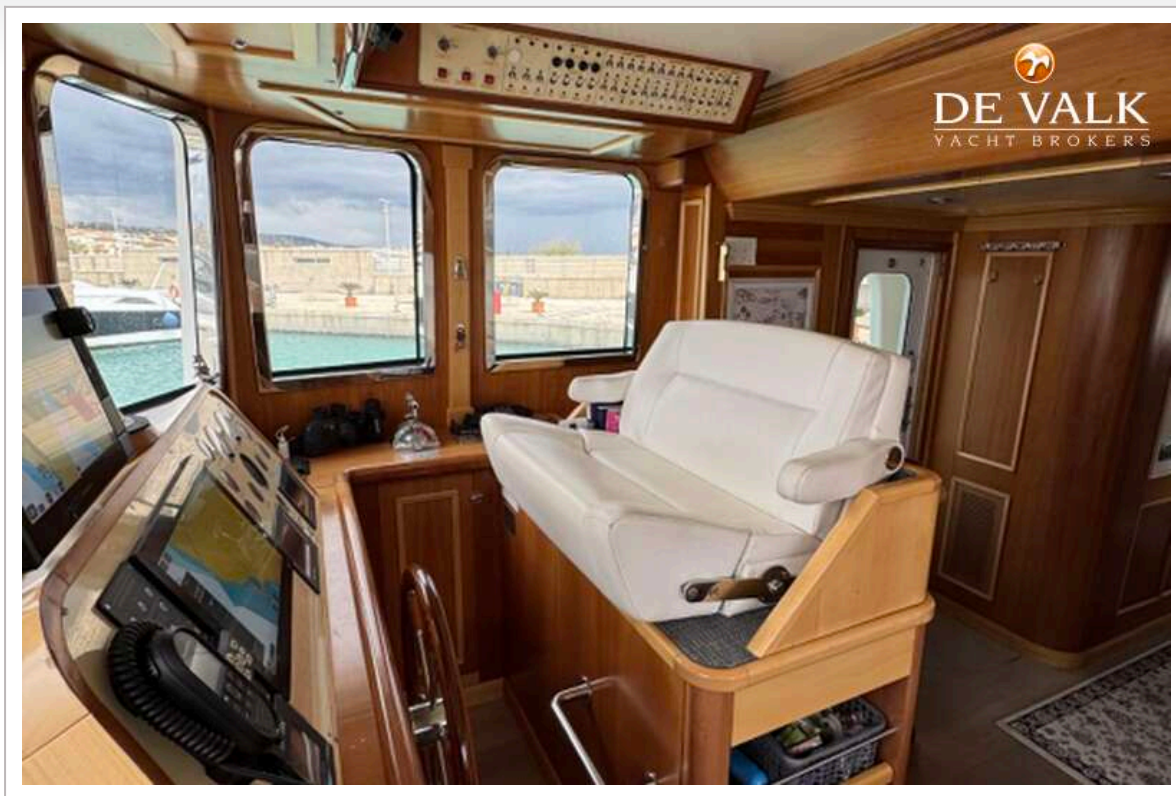
TERRANOVA T68



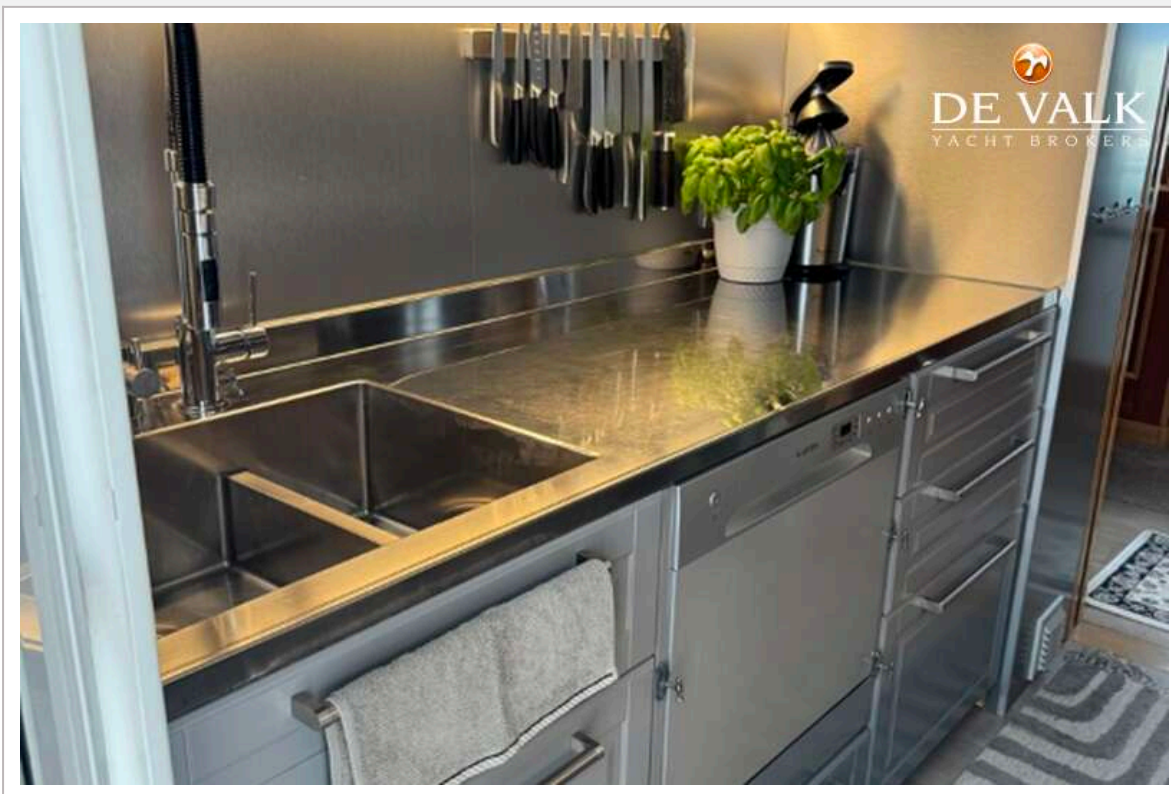
TERRANOVA T68



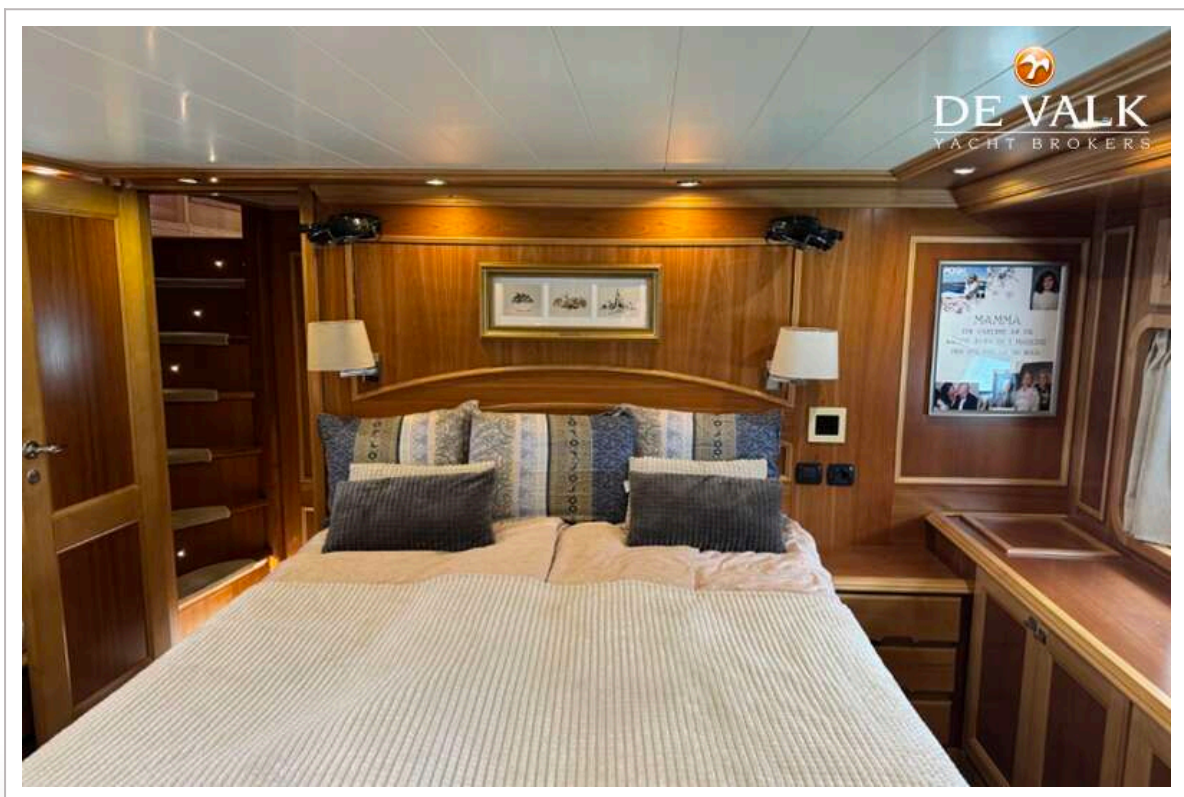
TERRANOVA T68



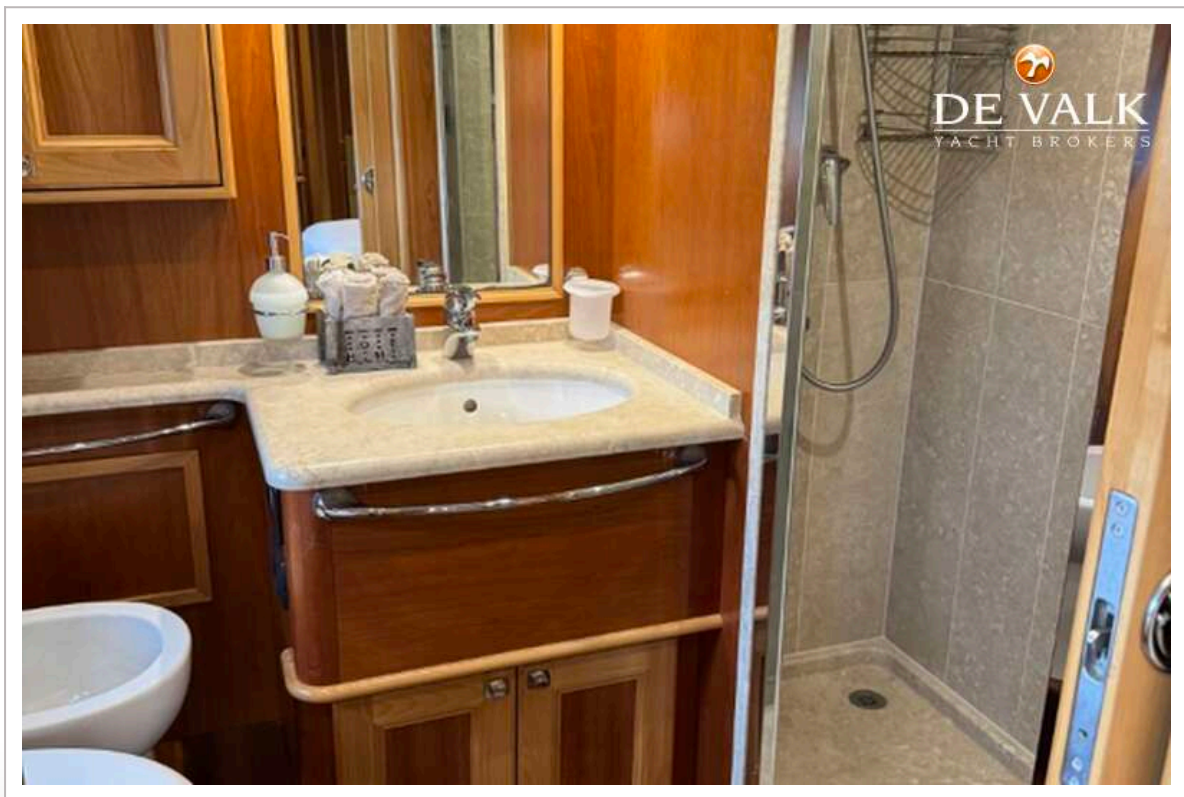
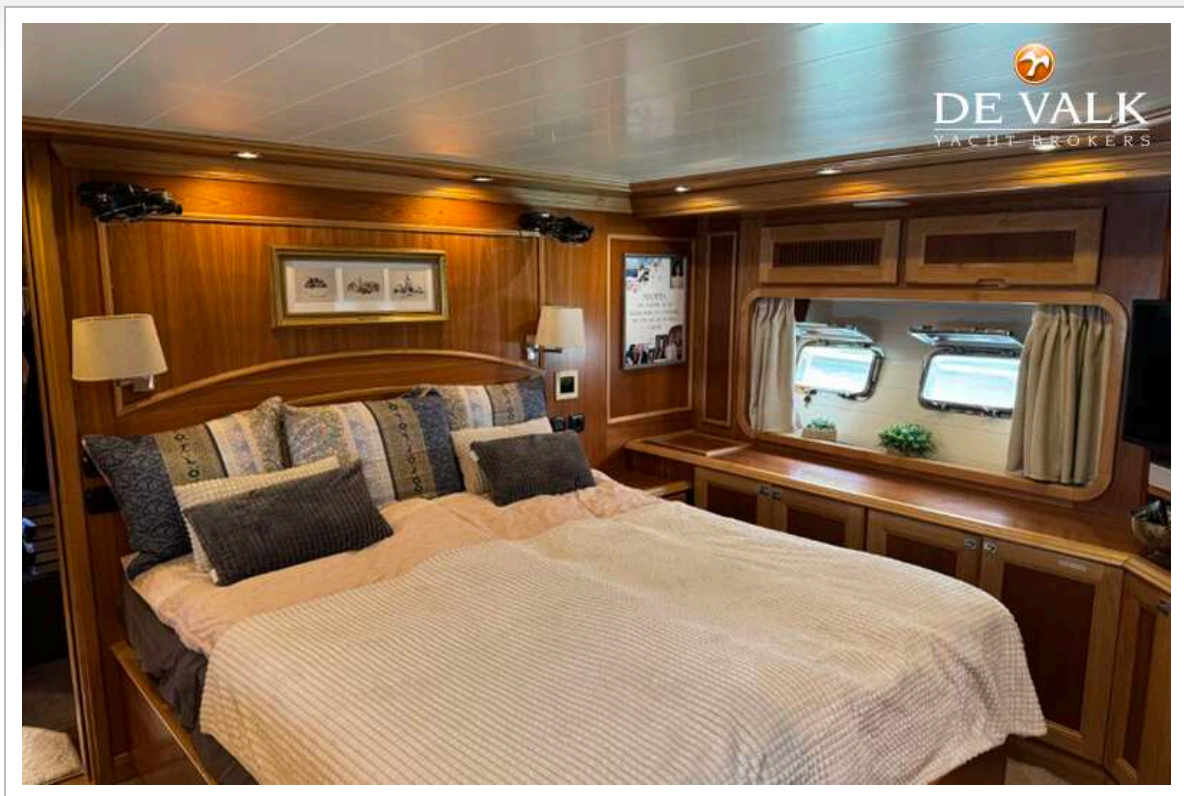
TERRANOVA T68



TERRANOVA T68



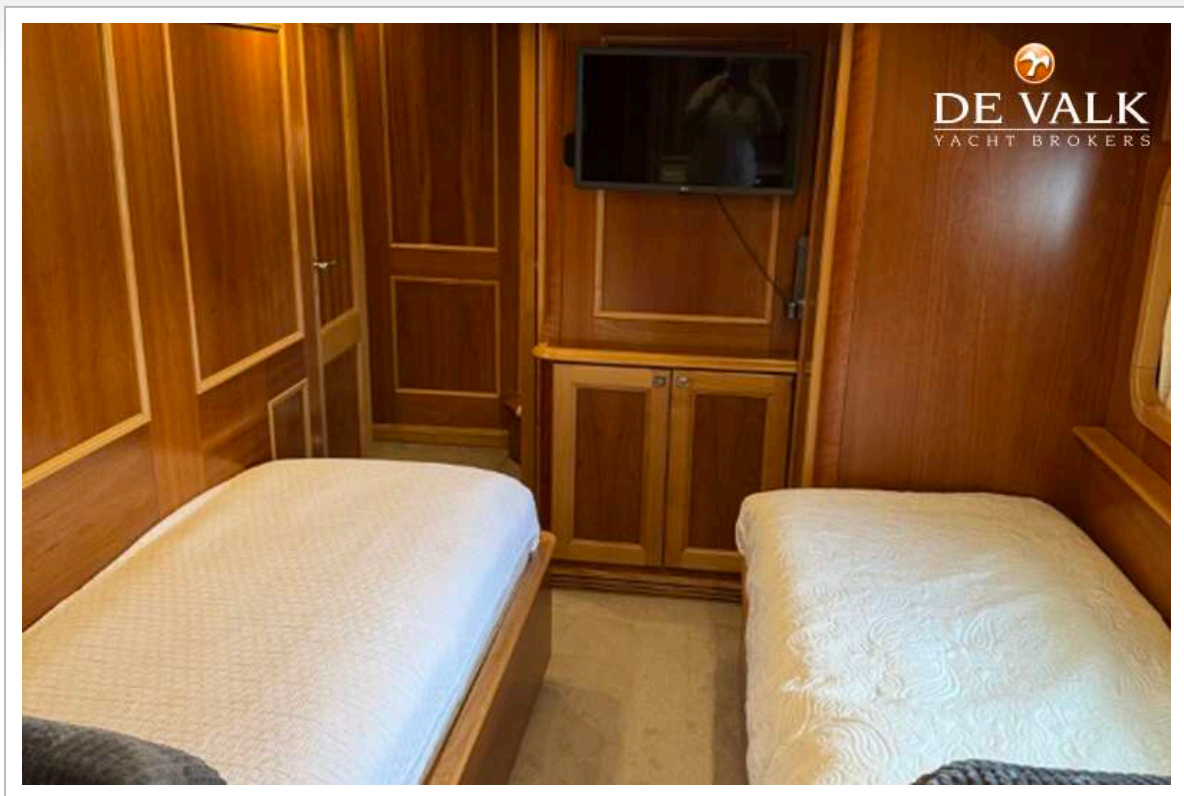
TERRANOVA T68



TERRANOVA T68



TERRANOVA T68



TERRANOVA T68

