



PRINCESS V48

PRINCESS V48

BROKER'S COMMENTS

This Princess V48 from 2006 is in good condition and well maintained. Located in Mallorca, she offers stylish design, great performance, and has been kept in good shape. Berth is available in Palma!

Oliver Stehula

SPECIFICATIONS

Dimensions	14.64 x 3.95 x 1.10 (m)	Builder	Princess Yachts
Built	2006	Cabins	2
Material	GRP	Berths	4
Engine(s)	2 x Volvo Penta D9 diesel	Hp/Kw	2 x 575.00 (hp), 423.20 (kw)
Asking price	€ 250.000 (VAT Paid)	Lying	at sales office

CONTACT

Sales office	De Valk Palma	Telephone	+34 971 40 29 11
Address	Port. Cala Nova, Avda. Joan Miro, 327 07015 Palma de Mallorca ES	E-mail	palma@devalk.nl

DISCLAIMER

These particulars are given in good faith as supplied but cannot be guaranteed.



GENERAL

Model	PRINCESS V48
Type	motor yacht
LOA (m)	14,64
Beam (m)	3,95
Draft (m)	1,10
Year built	2006
Builder	Princess Yachts
Country	United Kingdom
Designer	Princess Yachts
Displacement (t)	15,9
CE norm	B
Hull material	GRP
Hull colour	white
Superstructure material	GRP
Cockpit deck finish	teak
Fuel tank (litre)	1365
Level indicator (fuel tank)	Gauge
Freshwater tank (litre)	364
Level indicator (freshwater)	Gauge
Blackwater tank (litre)	yes
Wheel steering	hydraulic

ACCOMMODATION

Cabins	2
Berths	4
Saloon	yes
Sliding roof	electric
Air-conditioning	reverse cycle airco Dometic
Galley	yes
Countertop	corian



PRINCESS V48

Sink	stainless steel 2x
Cooker	electric
Fridge	Isotherm Freeline Elegance 115l
Hot water system	220V + engine
Water pressure system	electrical
Coffee maker	yes
Owners cabin	double bed
Wardrobe	hanging/drawers/shelves
Bathroom	en suite
Toilet	en suite
Toilet system	electric
Wash basin	in the bathroom
Guest cabin 1	twin single
Wardrobe	hanging/drawers/shelves
Bathroom	en suite
Toilet	In the bathroom
Toilet system	electric
Shower	In the bathroom
Tender garage	With SeaDoo

MACHINERY

No of engines	2
Make	Volvo Penta
Type	D9
HP	575
kW	423.20
Fuel	diesel
Year installed	2006
Maximum speed (kn)	35
Cruising speed (kn)	25
Engine hours	1800



Engine cooling system	freshwater heat exchanger
Drive	shaft
Engine controls	electrical & bowden cable
Bowthruster	electric Side Power
Sternthruster	electric Side Power
Exhaust	watercooled
Manual bilge pump	Whale
Electric bilge pump	yes
Electrical installation	yes
Generator	Onan 7KW
Running hours generator	3769
Service battery	4x Exide AGM EM 960 / 100Ah, New in 06/ 2025
Battery charger	Centaur 24V/ 60Amp
Shorepower	with cable

NAVIGATION

Log	Raymarine ST60
Autopilot	Raymarine ST6001
Radar	Furuno
Radar/GPS/plotter	Furuno
Navigation lights	yes

EQUIPMENT

Cockpit cushions	yes
Cockpit table	yes
Bathing platform	yes
Gangway	Besenzoni Hydraulic
Deck shower	yes
Anchor	Danforth
Anchor chain	50m
Windlass	Lewmar



Fenders	yes
Mooring lines	yes
TV	yes
Surround Sound System	Fusion
Cockpit speakers	yes
Speakers in salon	yes
Fire extinguisher	yes
Extinguisher in engine room	yes
Extra info	Cockpit Fridge
Extra info	Dietrich BBQ in Cockpit
Extra info	Sink stainless steel in Cockpit



PRINCESS V48



PRINCESS V48



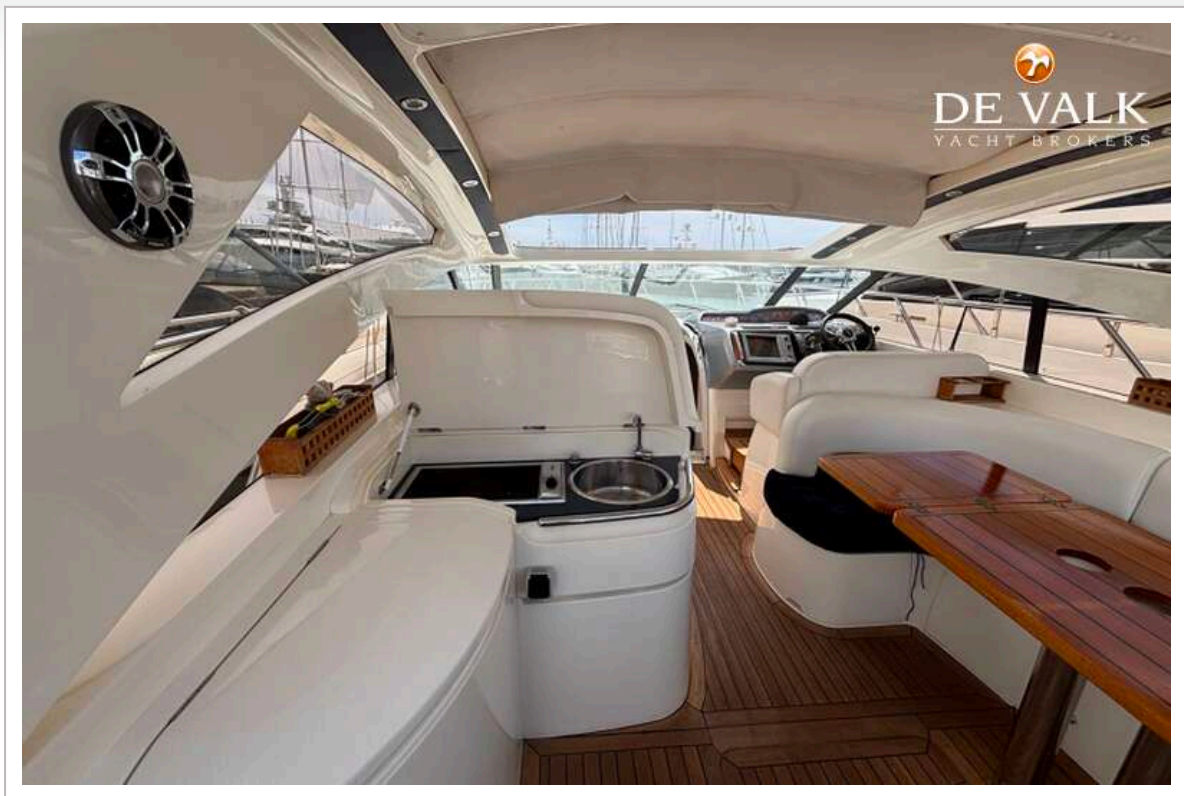
PRINCESS V48



PRINCESS V48



PRINCESS V48



PRINCESS V48



PRINCESS V48



PRINCESS V48



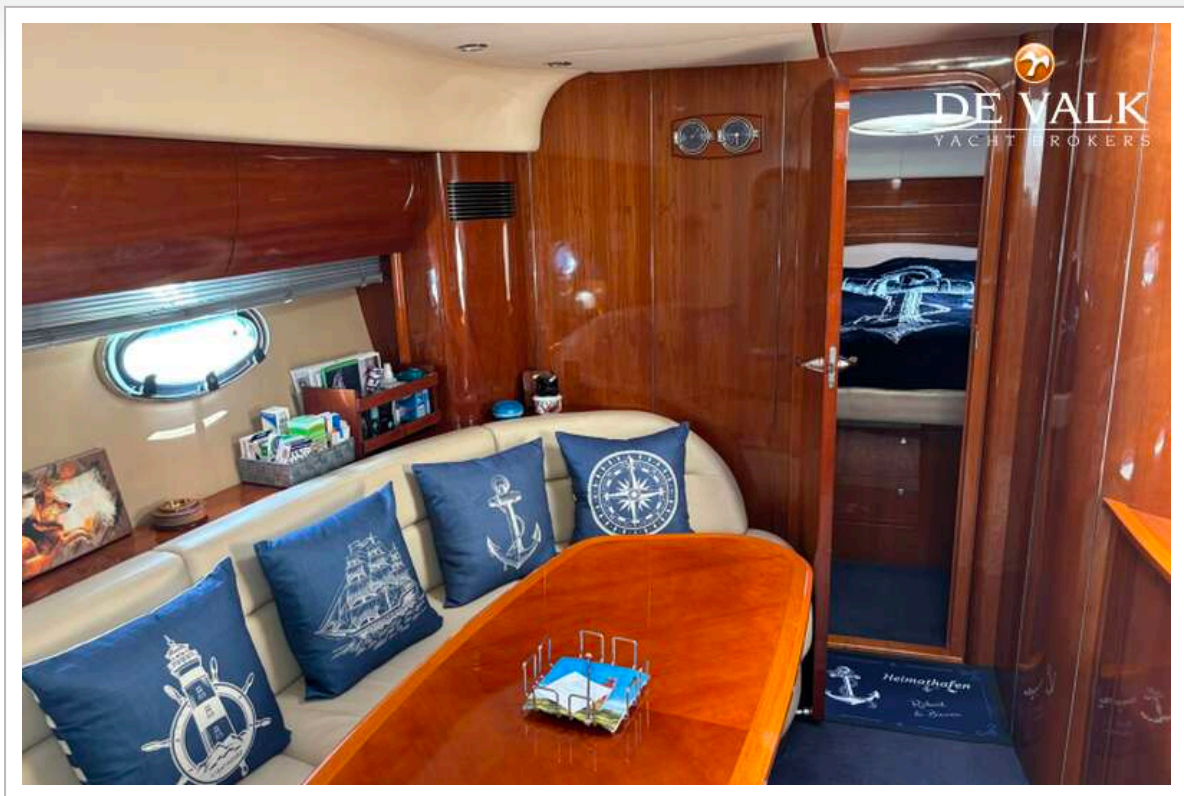
PRINCESS V48



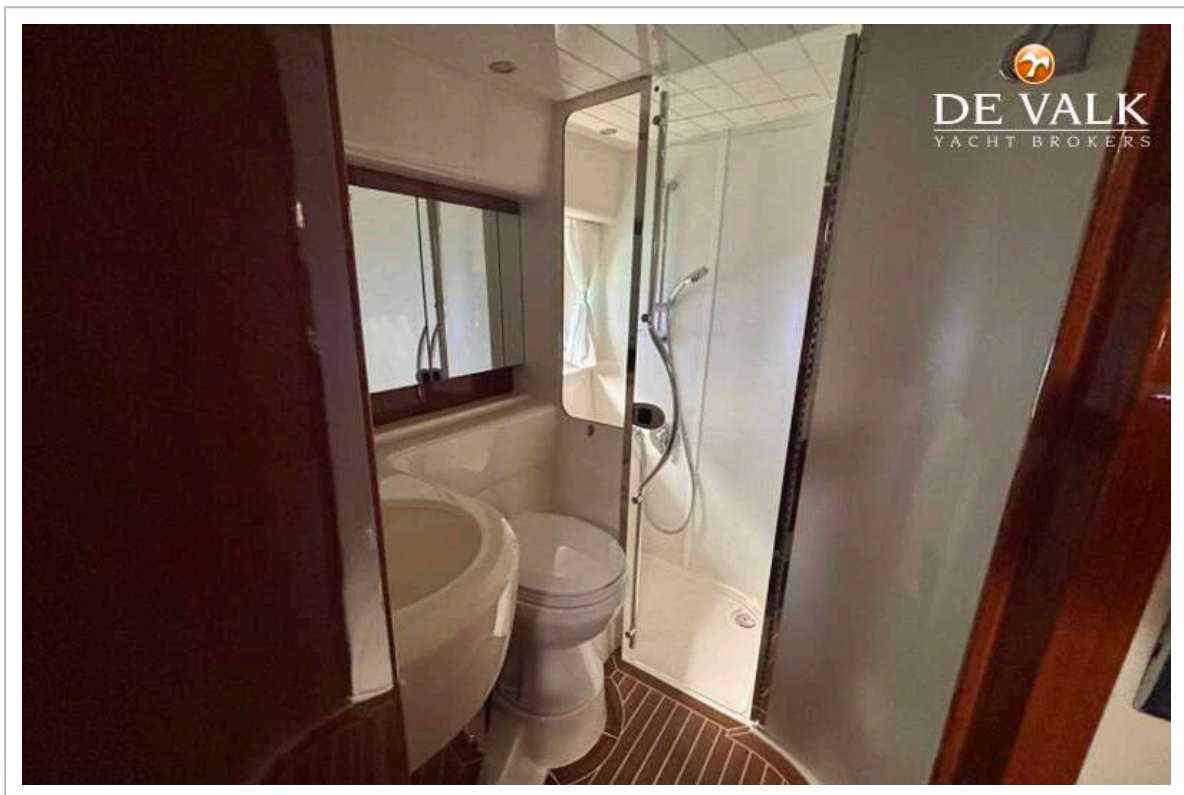
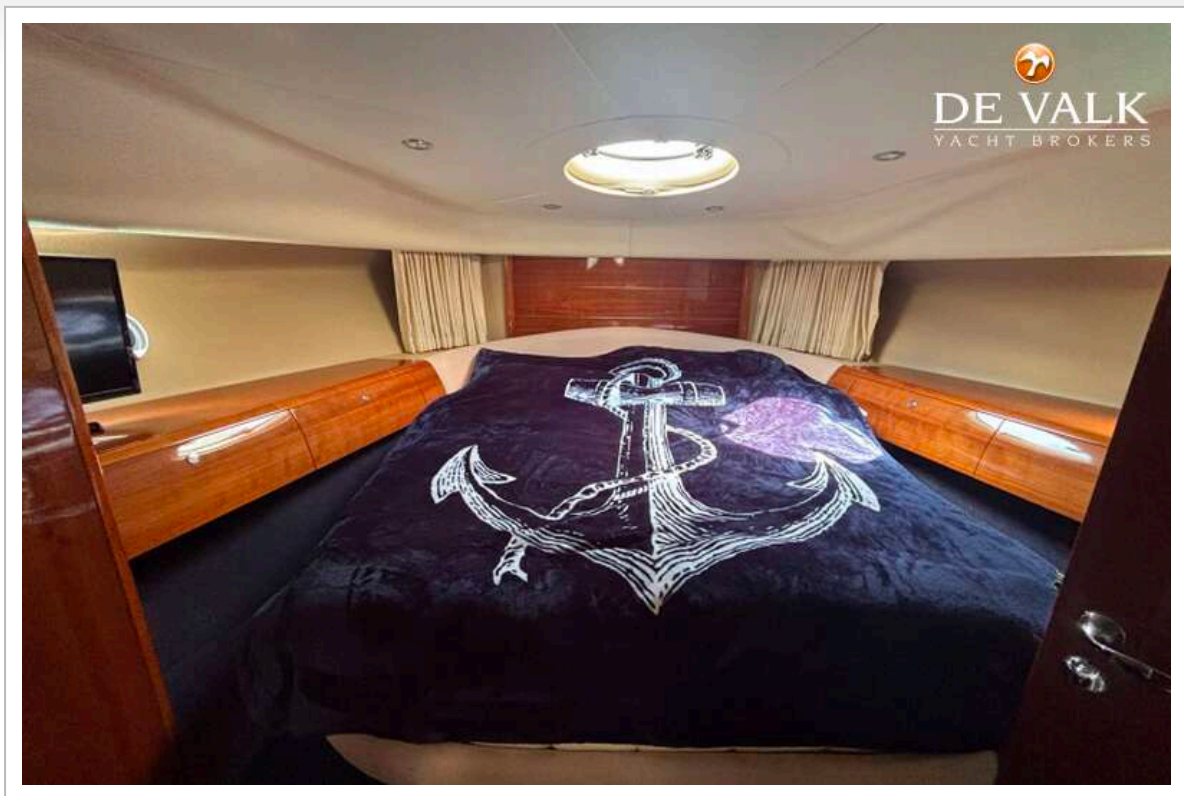
PRINCESS V48



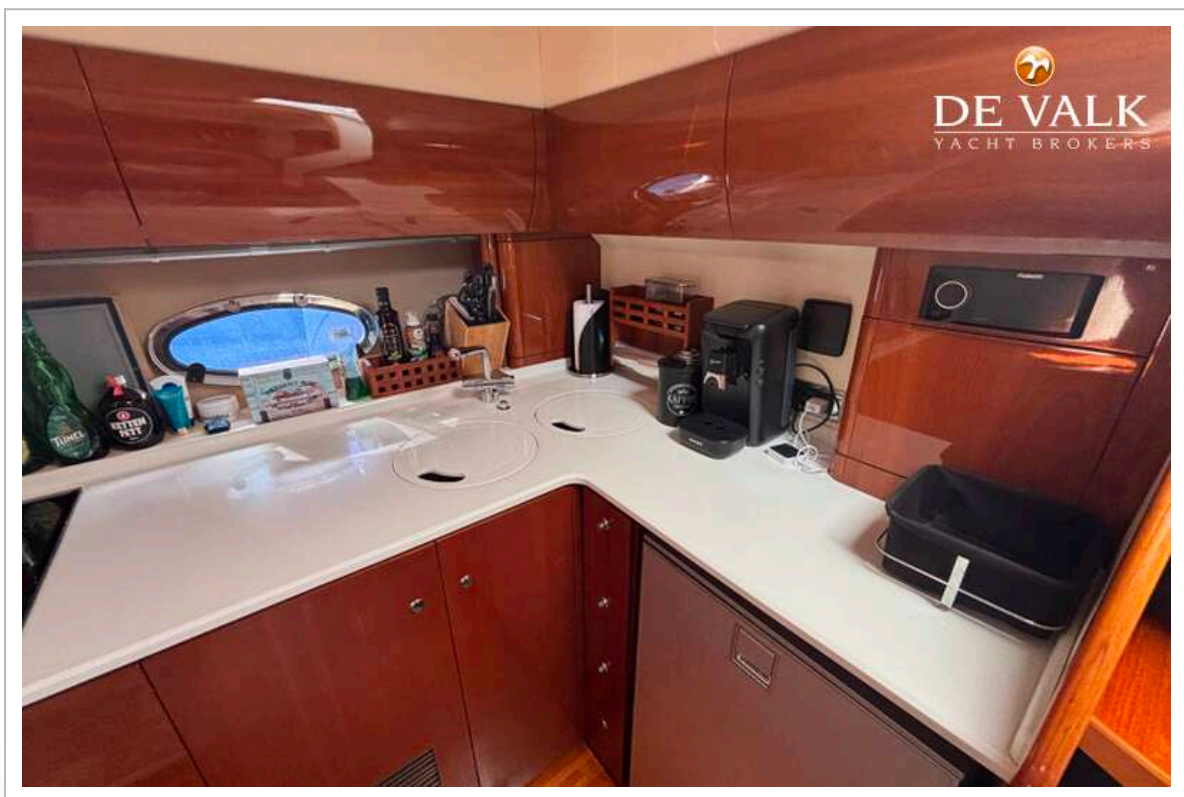
PRINCESS V48



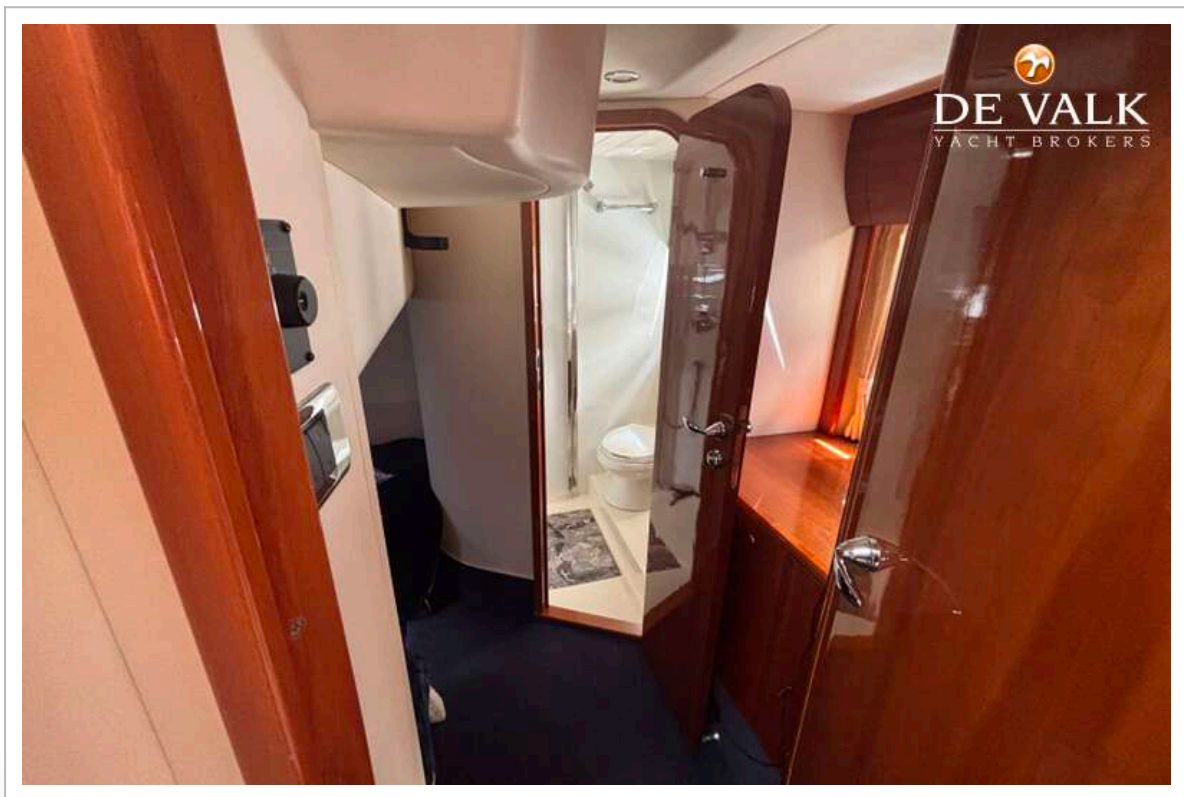
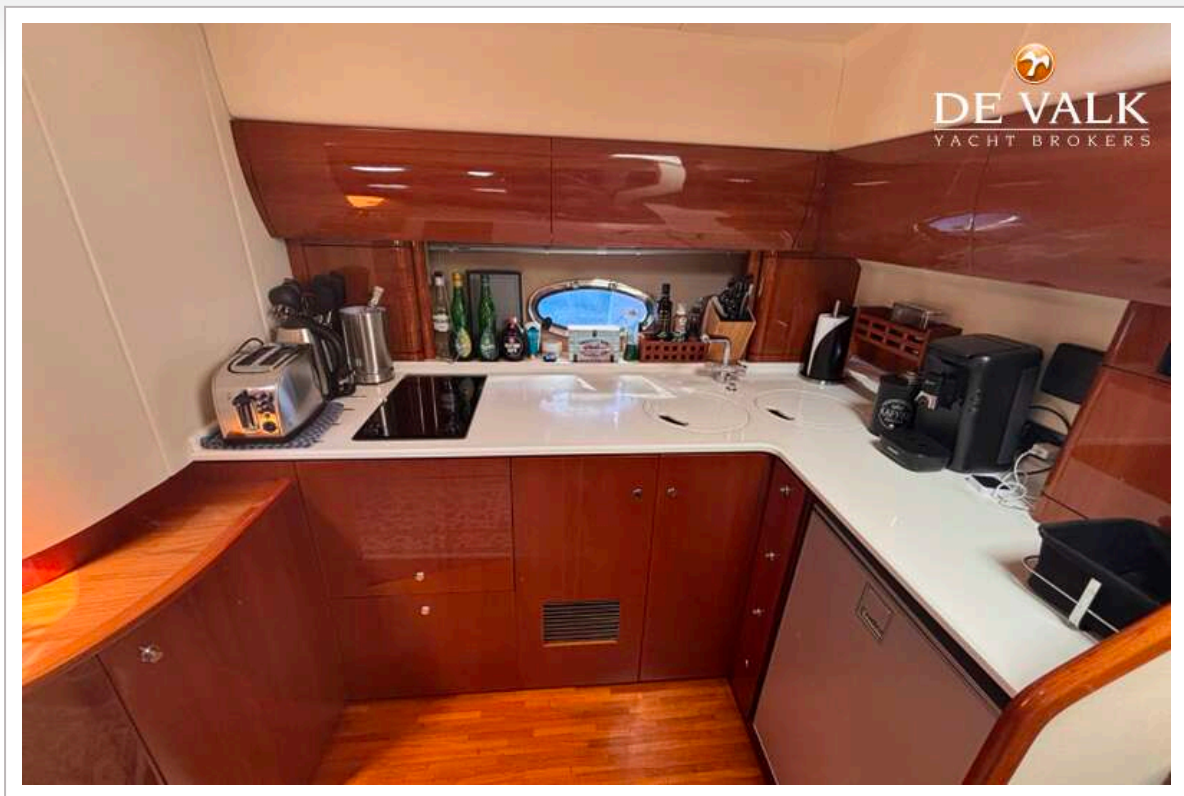
PRINCESS V48



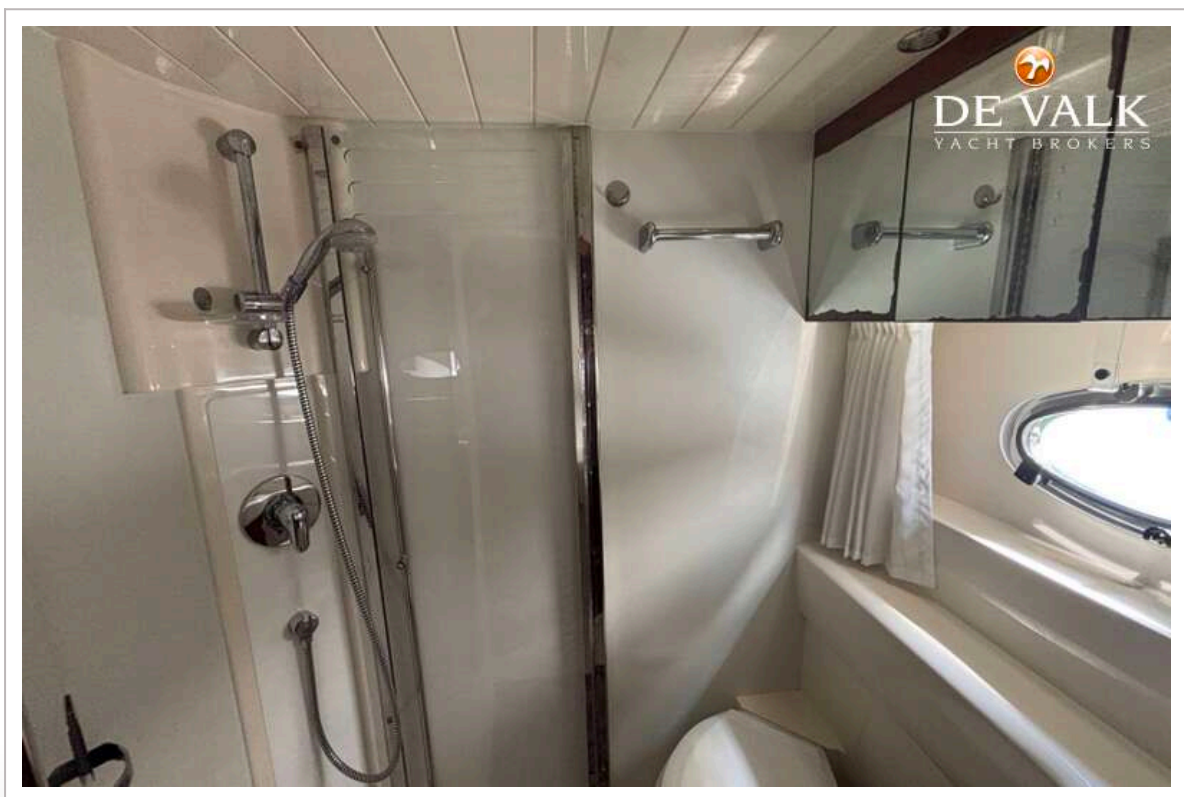
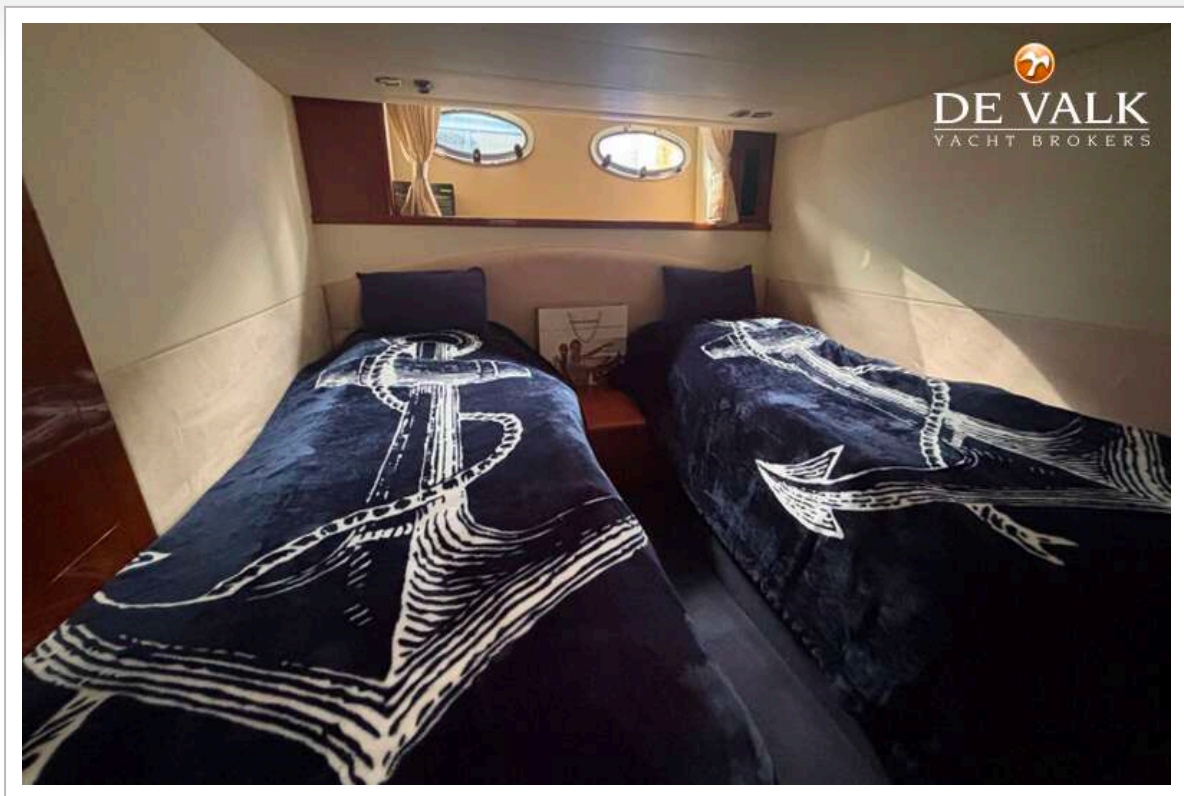
PRINCESS V48



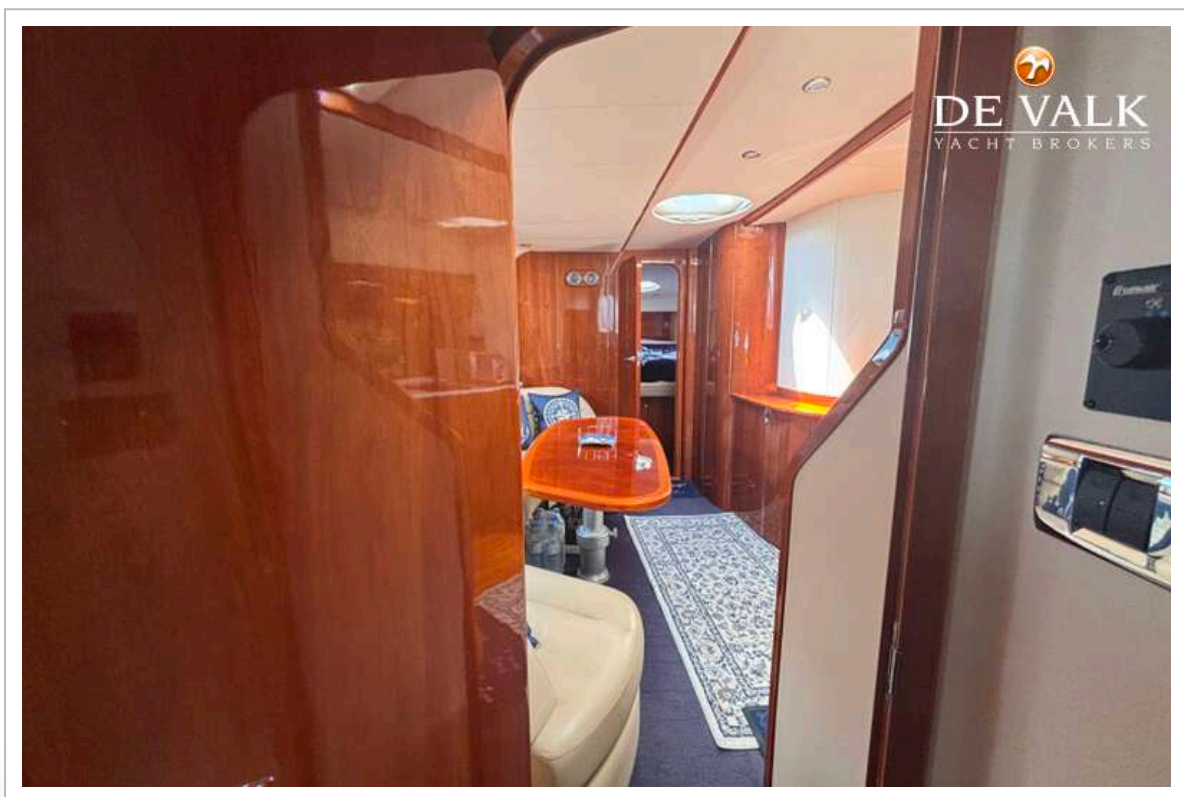
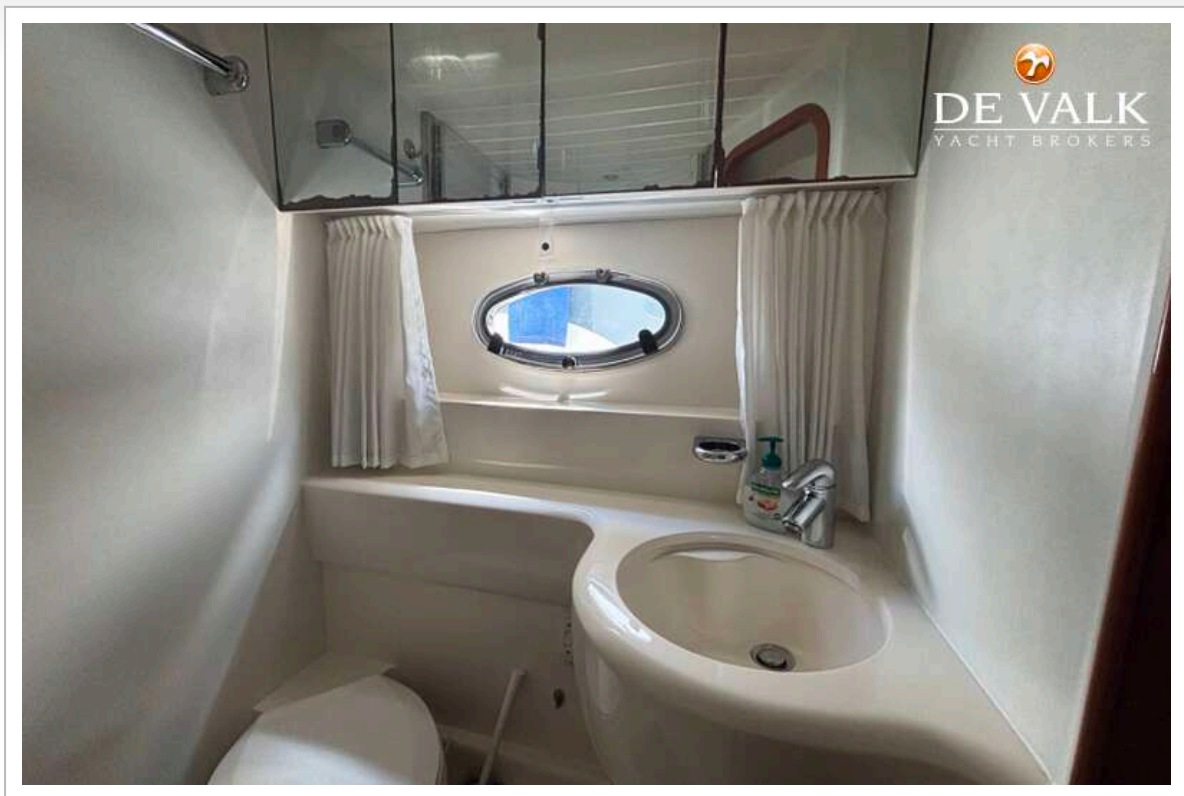
PRINCESS V48



PRINCESS V48



PRINCESS V48



PRINCESS V48

