



DE VALK



VAN DER VALK CONTINENTAL 15.50 FR



**DE VALK**  
YACHT BROKERS

# VAN DER VALK CONTINENTAL 15.50 FR

## BROKER'S COMMENTS

This beautifully maintained Wim Van der Valk Continental 15.50 "France Edition" combines Dutch solidity with elegant lines and a warm appearance. The hull was recently professionally wrapped, giving it a fresh, modern look. The reliable Volvo Penta D4 engines ensure a quiet and relaxed ride, while the hydraulic bow and stern thrusters make mooring effortless. The Van der Valk Continental 15.50 FR is being auctioned online at Bright Auctions. Bids can only be placed via Bright Auctions. All auction information can be found at:

<https://brightauctions.com/en/lot-details/19959>

*Jochem Heijermans*

## SPECIFICATIONS

<b>Dimensions</b>	16.50 x 4.60 x 1.45 (m)	<b>Builder</b>	W. Van Der Valk
<b>Built</b>	2006	<b>Cabins</b>	2
<b>Material</b>	Steel	<b>Berths</b>	4
<b>Engine(s)</b>	2 x Volvo Penta D4 diesel	<b>Hp/Kw</b>	2 x 180.00 (hp), 132.48 (kw)
<b>Asking price</b>	Under Offer (VAT )	<b>Lying</b>	elsewhere / Not at sales office

## CONTACT

<b>Sales office</b>	De Valk Sint Annaland B.V.	<b>Telephone</b>	+31 166 601 000
<b>Address</b>	Koelhuisweg 4 4697 RM Sint Annaland NL	<b>E-mail</b>	sintannaland@devalk.nl

## DISCLAIMER

These particulars are given in good faith as supplied but cannot be guaranteed.



# VAN DER VALK CONTINENTAL 15.50 FR

## GENERAL

<b>Model</b>	VAN DER VALK CONTINENTAL 15.50 FR
<b>Type</b>	motor yacht
<b>LOA (m)</b>	16,50
<b>LWL (m)</b>	14,99
<b>Beam (m)</b>	4,60
<b>Draft (m)</b>	1,45
<b>Air draft (m)</b>	3,45
<b>Headroom (m)</b>	2,00
<b>Year built</b>	2006
<b>Builder</b>	W. Van Der Valk
<b>Country</b>	The Netherlands
<b>Displacement (t)</b>	30
<b>CE norm</b>	B
<b>Hull material</b>	steel
<b>Hull thickness (mm)</b>	5
<b>Hull shape</b>	hard chine
<b>Superstructure material</b>	steel
<b>Superstructure (mm)</b>	4
<b>Deck plate thickness (mm)</b>	4
<b>Rubbing strake</b>	stainless steel
<b>Deck material</b>	steel
<b>Deck finish</b>	teak
<b>Superstructure deck finish</b>	non-skid paint (2014)
<b>Cockpit deck finish</b>	teak
<b>Antifouling (year)</b>	(2025)
<b>Window frame</b>	aluminium
<b>Window material</b>	double glazing
<b>Deckhatch</b>	yes
<b>Portholes</b>	stainless steel
<b>Insulation</b>	PU Foam



<b>Radar arch</b>	collapsible
<b>Mast can be lowered</b>	hydraulic
<b>Fuel tank (litre)</b>	steel 2500
<b>Level indicator (fuel tank)</b>	yes
<b>Freshwater tank (litre)</b>	1100
<b>Level indicator (freshwater)</b>	yes
<b>Blackwater tank (litre)</b>	500
<b>Level indicator (blackwater)</b>	yes
<b>Blackwater tank extraction</b>	deck extraction + pump
<b>Wheel steering</b>	hydraulic
<b>More info on paintwork</b>	2014 hull painted and 2021 hull wrapped

## ACCOMMODATION

<b>Cabins</b>	2
<b>Berths</b>	4
<b>Interior</b>	teak
<b>Layout</b>	2-cabins, 2x toilet, saloon & wheelhouse
<b>Floor</b>	carpet
<b>Aft deck</b>	yes
<b>Saloon</b>	yes
<b>Headroom saloon (m)</b>	2.00
<b>Sliding roof</b>	electric
<b>Heating</b>	central heating Kabola
<b>Air-conditioning</b>	reverse cycle airco
<b>Aft Cabin</b>	Master state room
<b>Dinette</b>	yes
<b>Opening door to aft deck</b>	yes
<b>Galley</b>	yes
<b>Countertop</b>	granite
<b>Sink</b>	stainless steel
<b>Cooker</b>	Bosch 4 burner



# VAN DER VALK CONTINENTAL 15.50 FR

<b>Microwave/oven combi</b>	Bosch (microwave needs to be serviced)
<b>Fridge</b>	1x wheel house, 1x galley
<b>Freezer</b>	yes
<b>Hot water system</b>	220V + engine
<b>Water pressure system</b>	electrical
<b>Dishwasher</b>	Bosch
<b>Owners cabin</b>	French bed
<b>Bed length (m)</b>	2,00 x 1,50
<b>Wardrobe</b>	hanging/drawers/shelves
<b>Bathroom</b>	en suite
<b>Toilet</b>	en suite
<b>Toilet system</b>	electric
<b>Wash basin</b>	in the bathroom
<b>Shower</b>	en suite
<b>Guest cabin 1</b>	French bed
<b>Bed length (m)</b>	2,00 x 1,50
<b>Wardrobe</b>	hanging and shelves
<b>Bathroom</b>	en suite
<b>Toilet</b>	shared
<b>Toilet system</b>	electric
<b>Wash basin</b>	in the bathroom
<b>Shower</b>	en suite
<b>Washing machine</b>	Bosch
<b>Dryer</b>	Bosch

## MACHINERY

<b>No of engines</b>	2
<b>Make</b>	Volvo Penta
<b>Type</b>	D4
<b>HP</b>	180
<b>kW</b>	132.48



# VAN DER VALK CONTINENTAL 15.50 FR

<b>Fuel</b>	diesel
<b>Year installed</b>	2006
<b>Maximum speed (kn)</b>	10
<b>Cruising speed (kn)</b>	8
<b>Engine hours</b>	2875
<b>Engine cooling system</b>	freshwater heat exchanger
<b>Drive</b>	shaft
<b>Shaft seal</b>	yes
<b>Engine controls</b>	Volvo EVC + Hydronautica remote control
<b>Gearbox</b>	hydraulic HS45 AE 2,03 :1
<b>Bowthruster</b>	hydraulic 15 hp
<b>Sternthruster</b>	hydraulic 15 hp
<b>Exhaust</b>	watercooled
<b>Thrust bearing</b>	Aqua Drive
<b>Propeller type</b>	fixed
<b>Propeller blades</b>	4
<b>Propeller shaft material</b>	stainless steel
<b>Shaft lubrication</b>	water
<b>Manual bilge pump</b>	yes
<b>Electric bilge pump</b>	yes
<b>Bilge alarm</b>	yes
<b>Electrical installation</b>	12/24/220V
<b>Generator</b>	silent separator Whisper Ultra 12 Kva
<b>Batteries</b>	yes
<b>Start battery</b>	(2025)
<b>Service battery</b>	(2025)
<b>Generator battery</b>	yes
<b>Battery monitor</b>	Mastervolt Power Sytem Control Panel
<b>Battery charger</b>	Mastervolt
<b>Inverter</b>	Mastervolt
<b>Shorepower</b>	with cable
<b>Insulation transformer</b>	Victron



## NAVIGATION

Electric compass	Raymarine ST 60+
Depth sounder/log	Raymarine ST 60+ Tridata
Windset	Raymarine ST 60+
VHF	Raymarine Ray 240E
Autopilot	Raymarine Smart Pilot
Rudder angle indicator	Raymarine ST 60+
Radar/GPS/plotter	Raymarine C120
Navigation lights	yes
Searchlight	yes

## EQUIPMENT

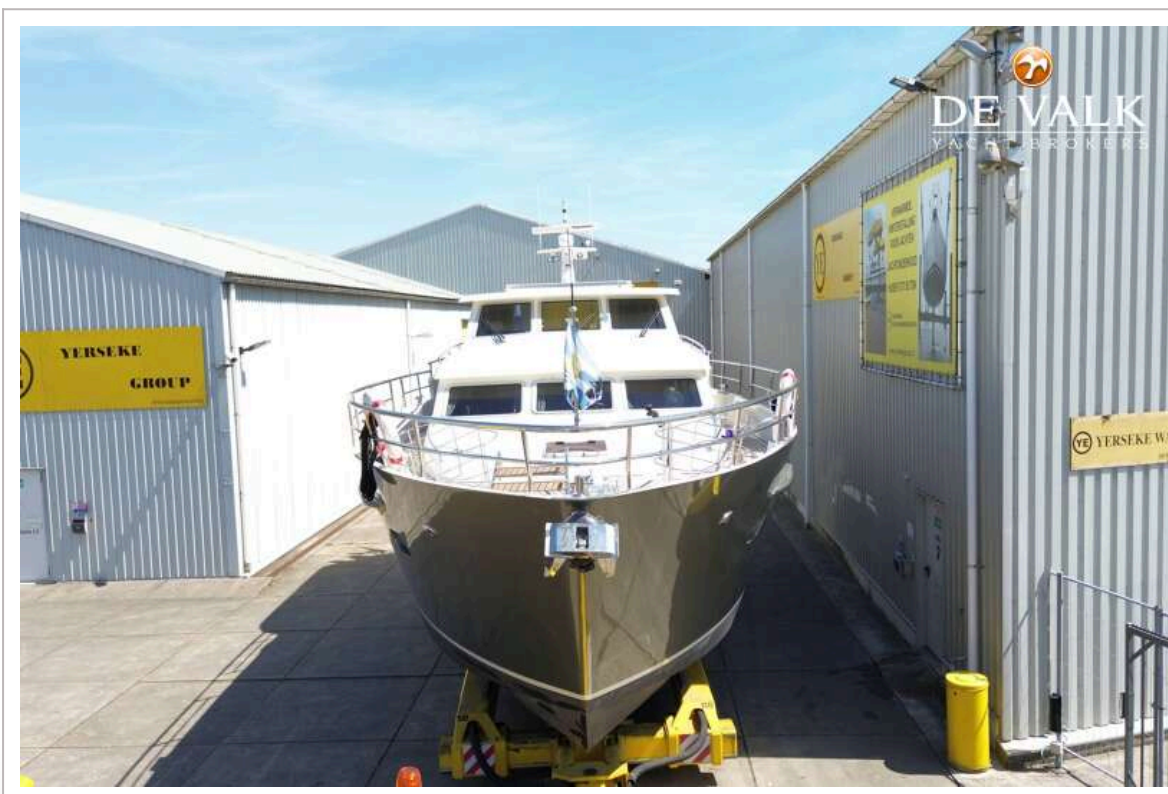
Fixed windscreen	yes
Cockpit cushions	yes
Cockpit table	yes
Bathing platform	yes
Boarding ladder	stainless steel
Transom door	yes
Gangway	Besenzone
Deck shower	yes
Anchor	yes
Anchor chain	yes
Windlass	electrical
Capstan	yes
Deck wash	With osmosefilter
Davits	stainless steel Besenzone
Davits controls	electrical
Sea railing	yes
Grab rail (superstructure)	stainless steel
Wiper	yes
Fenders	yes



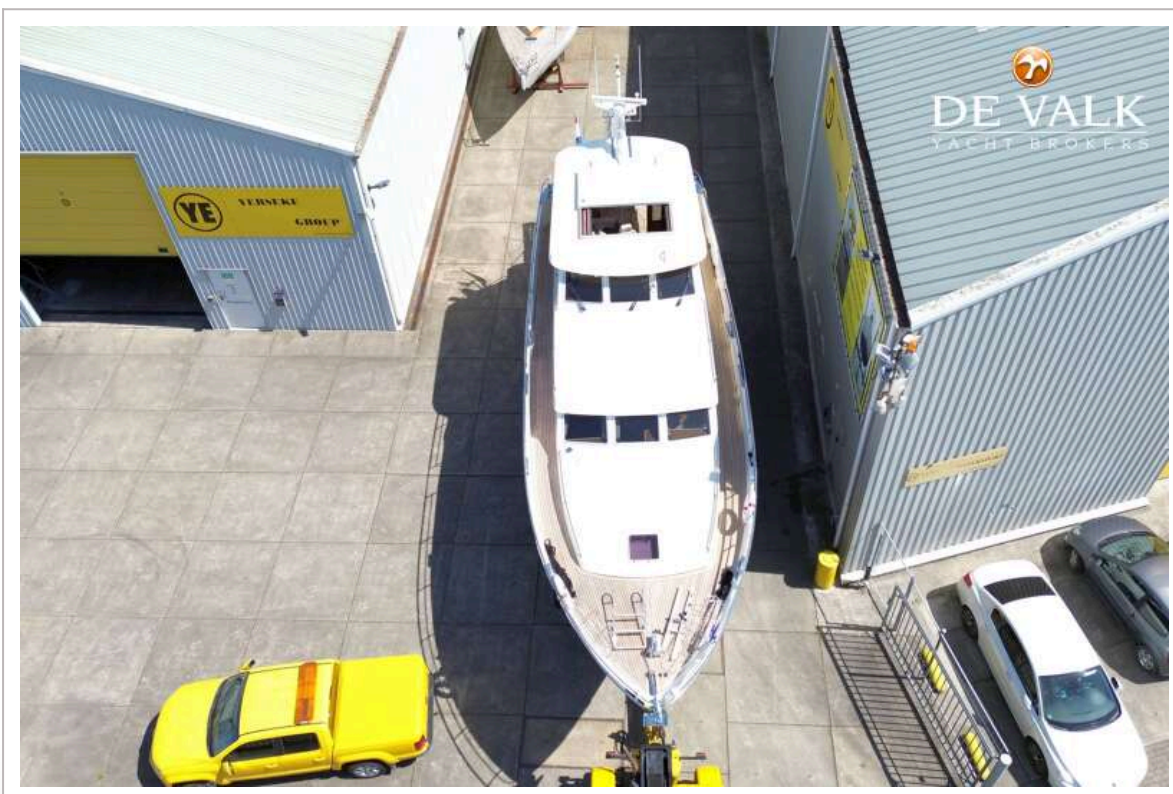
Mooring lines	yes
TV	yes
Radio-cd player	yes
Fire extinguisher	yes



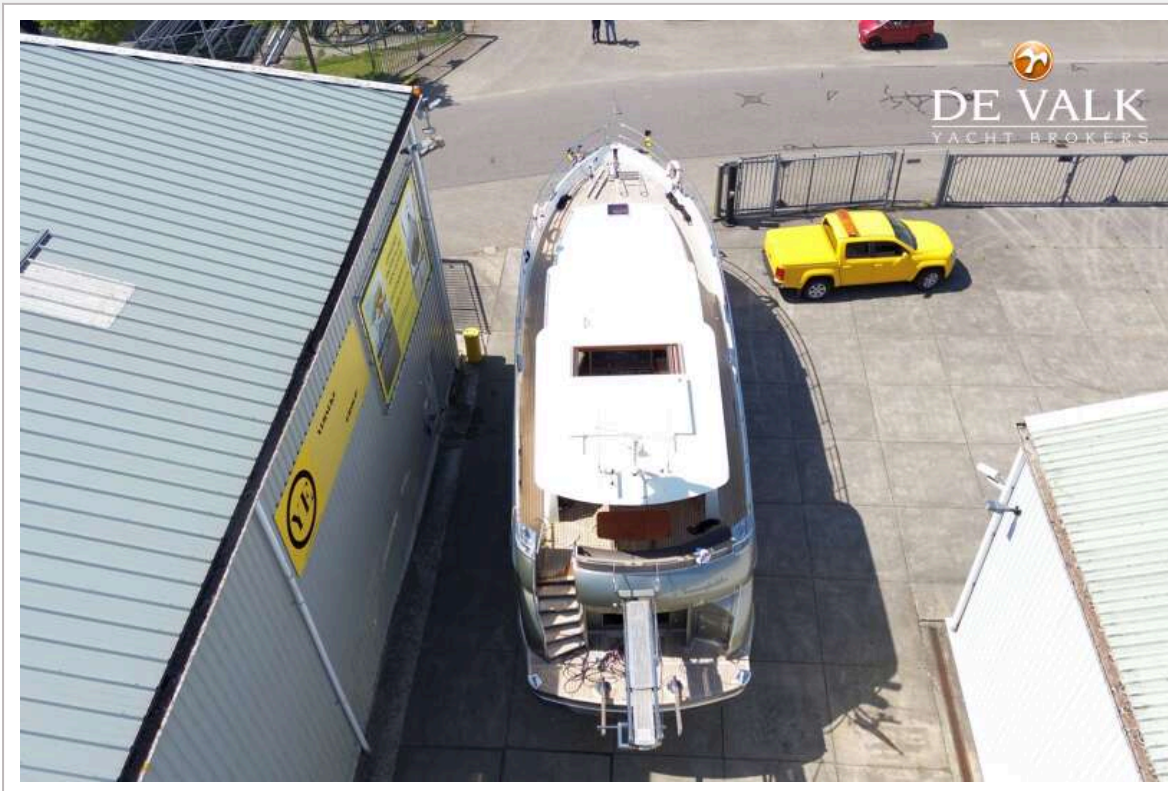
# VAN DER VALK CONTINENTAL 15.50 FR



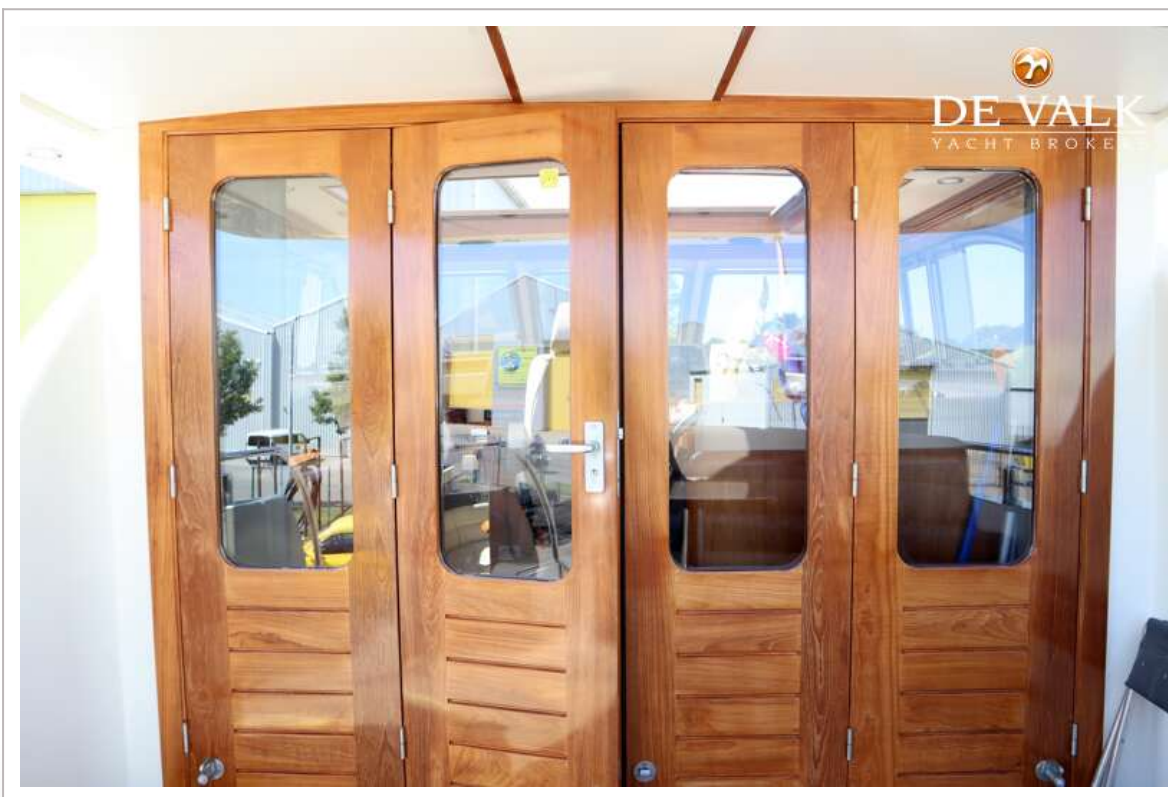
# VAN DER VALK CONTINENTAL 15.50 FR



# VAN DER VALK CONTINENTAL 15.50 FR



# VAN DER VALK CONTINENTAL 15.50 FR



# VAN DER VALK CONTINENTAL 15.50 FR



# VAN DER VALK CONTINENTAL 15.50 FR



# VAN DER VALK CONTINENTAL 15.50 FR



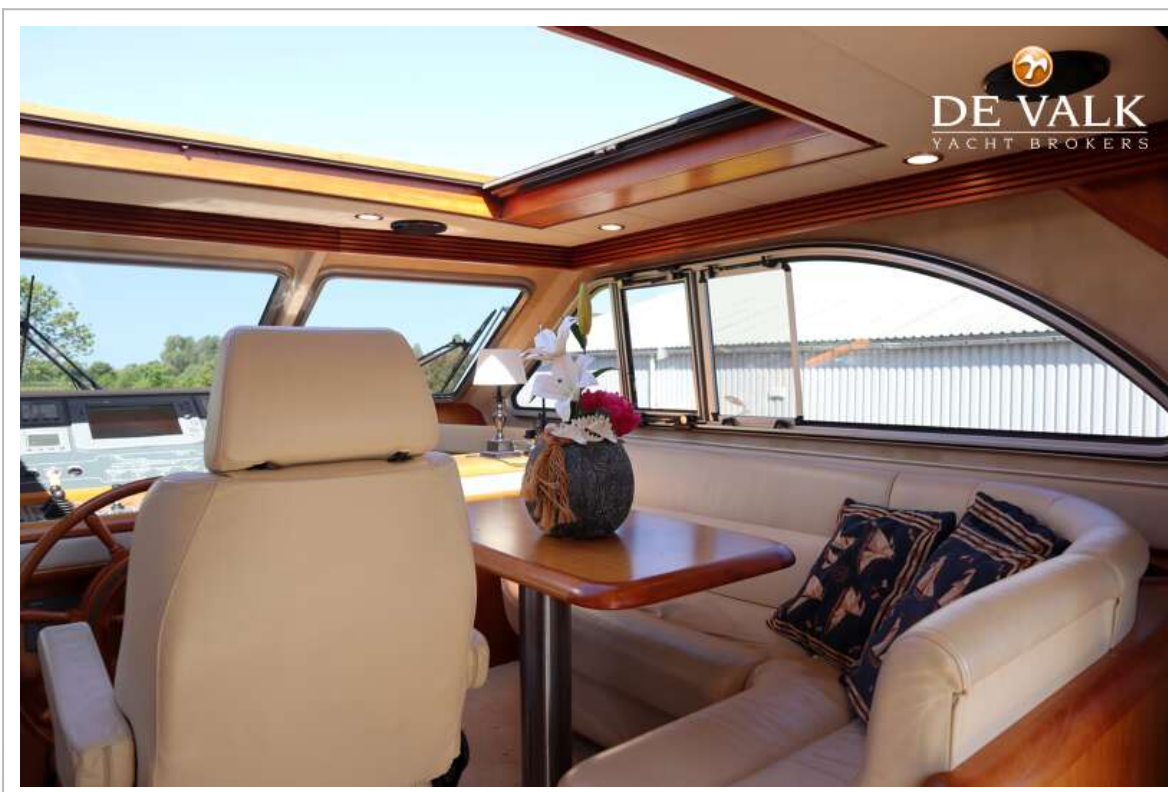
# VAN DER VALK CONTINENTAL 15.50 FR



# VAN DER VALK CONTINENTAL 15.50 FR



# VAN DER VALK CONTINENTAL 15.50 FR



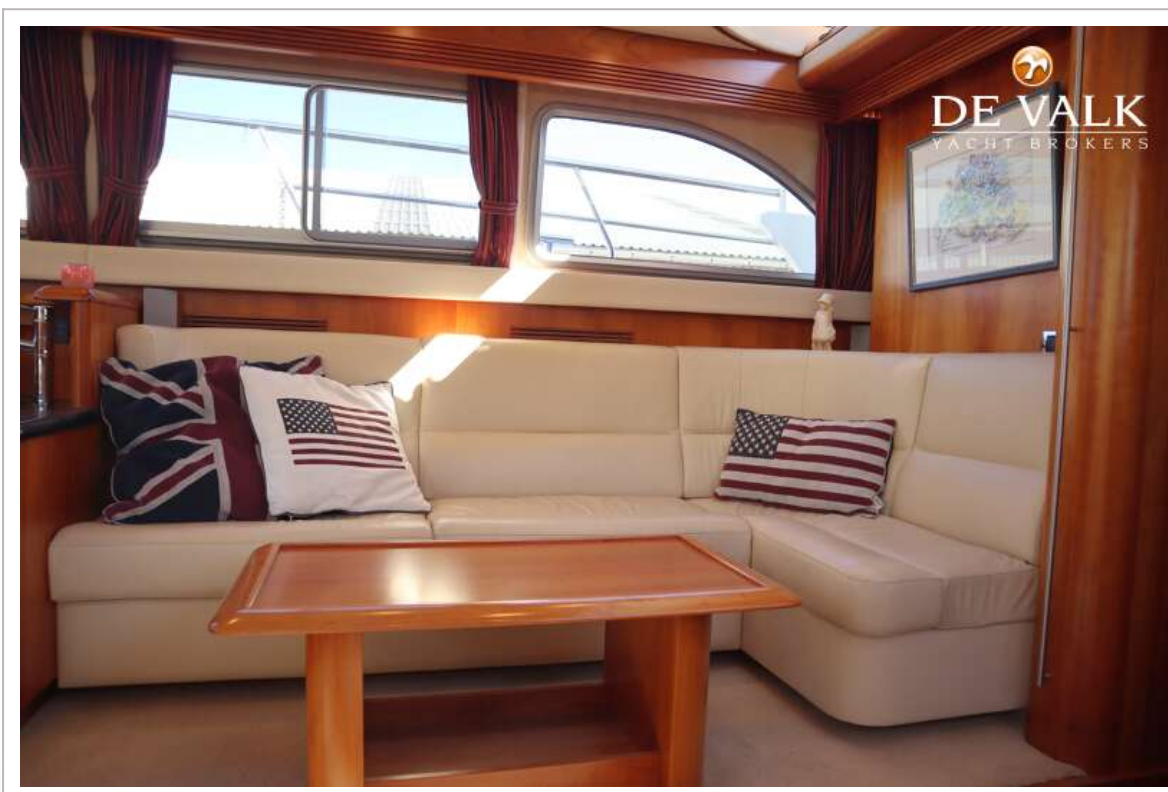
# VAN DER VALK CONTINENTAL 15.50 FR



# VAN DER VALK CONTINENTAL 15.50 FR



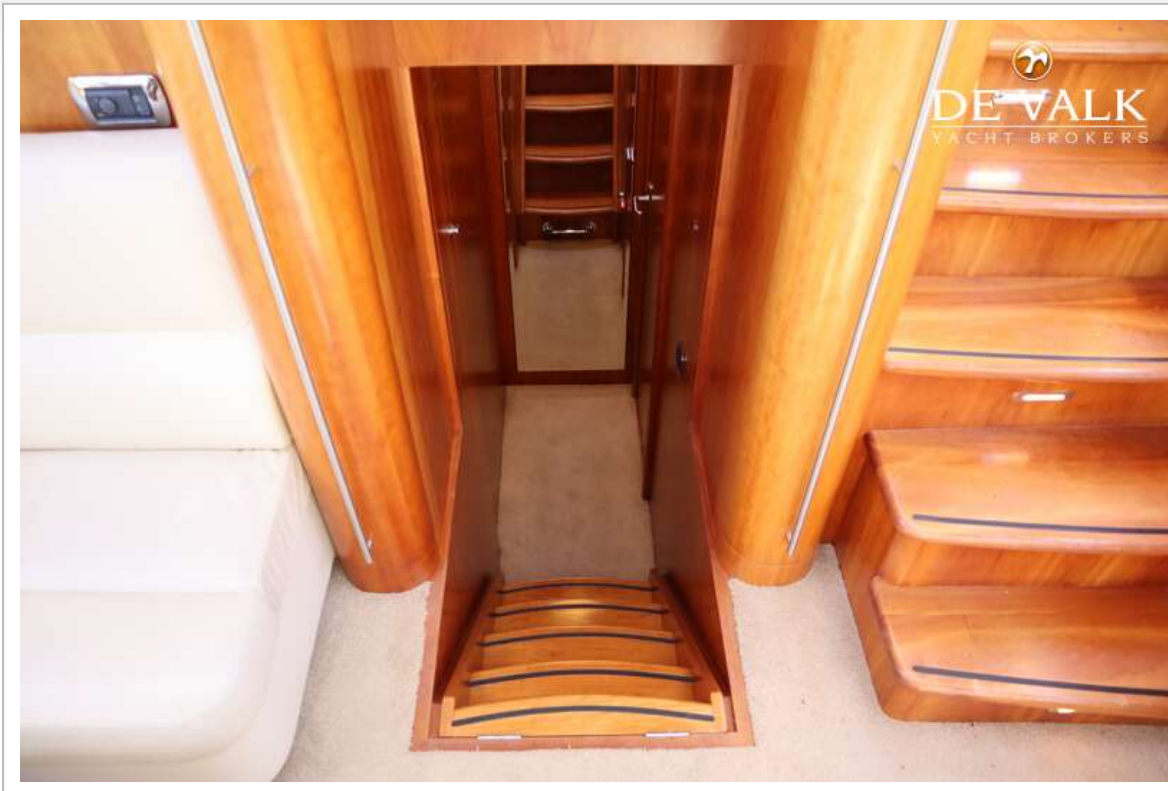
# VAN DER VALK CONTINENTAL 15.50 FR



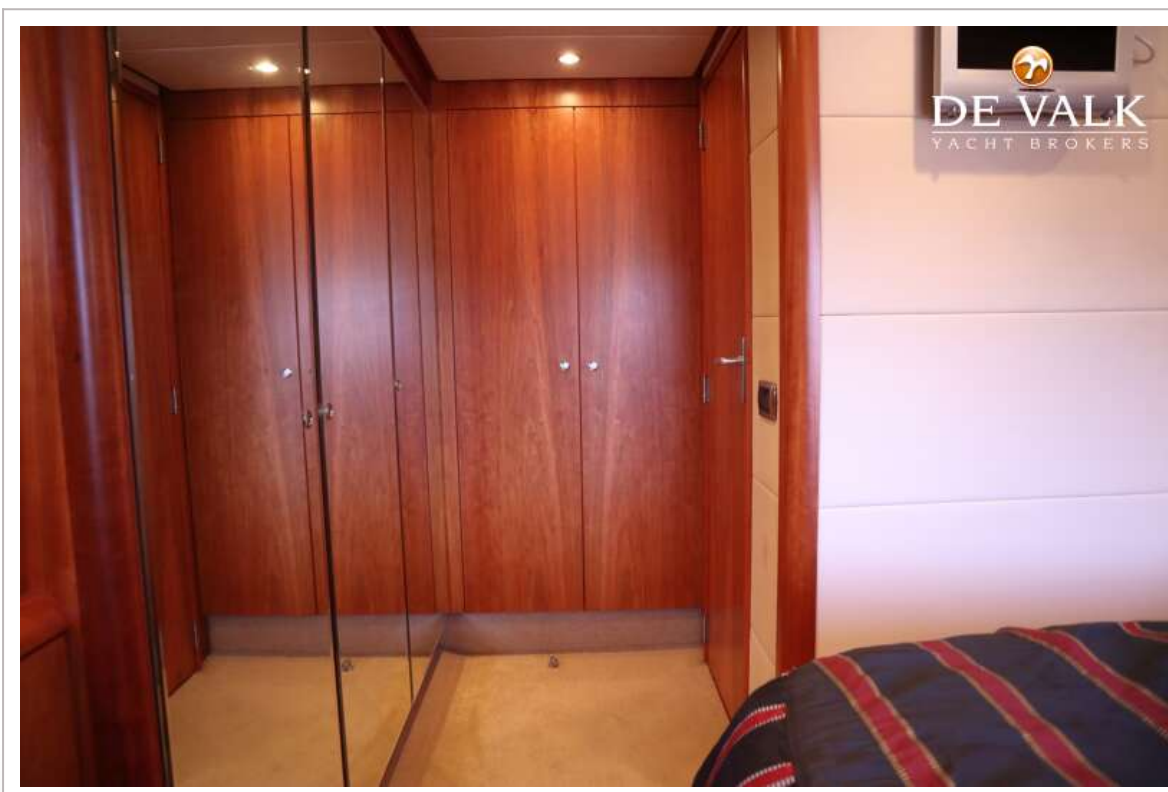
# VAN DER VALK CONTINENTAL 15.50 FR



# VAN DER VALK CONTINENTAL 15.50 FR



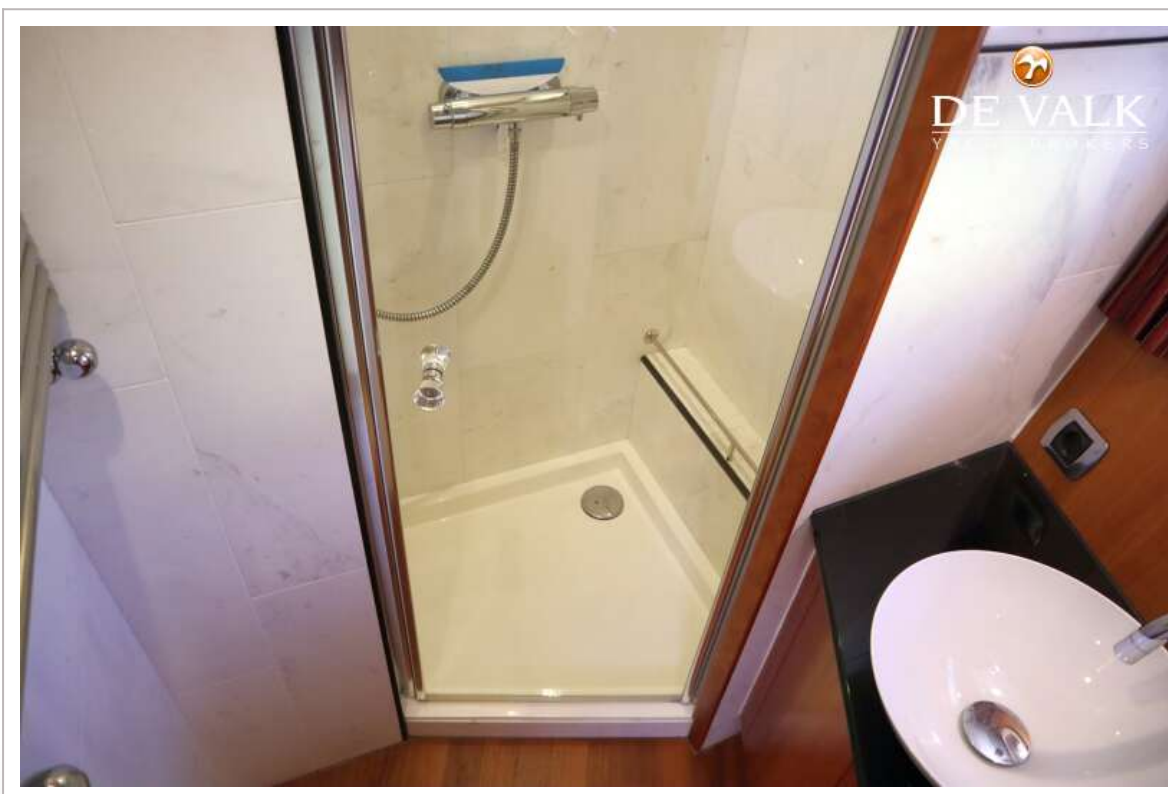
# VAN DER VALK CONTINENTAL 15.50 FR



# VAN DER VALK CONTINENTAL 15.50 FR



# VAN DER VALK CONTINENTAL 15.50 FR



# VAN DER VALK CONTINENTAL 15.50 FR



# VAN DER VALK CONTINENTAL 15.50 FR



