



DE VALK
YACHT BROKERS



TRESFJORD 340 MONTE CARLO FLY



DE VALK
YACHT BROKERS

TRESFJORD 340 MONTE CARLO FLY

BROKER'S COMMENTS

TRESFJORD 340 FLY in very good condition! Norwegian quality boat with timeless design. The Saloon provides an u-sofa with great view on the water and lots of space. The flybridge gives you the best outdoor feeling even so the bathplatform with a bench to enjoy the heckwave. Spacious cabin with 6 berths, 2 in separate midcabin with door, 2 in the bow and 2 in the saloon. Toilet with shower and kitchenette with stove, oven, fan. Engines: 2 x Mercruiser and strong bowthruster

Jeanne Stukstette

SPECIFICATIONS

Dimensions	10.80 x 3.62 x 0.90 (m)	Builder	Tresjford
Built	1991	Cabins	2
Material	GRP	Berths	6
Engine(s)	2 x Mercruiser D219 diesel	Hp/Kw	2 x 180.00 (hp), 132.48 (kw)
Asking price	€ 67.500 (VAT Paid)	Lying	at sales office

CONTACT

Sales office	De Valk Limburg	Telephone	+31 630372559
Address	Schippersveld 3 6019 DE Wessem NL	E-mail	limburg@devalk.nl

DISCLAIMER

These particulars are given in good faith as supplied but cannot be guaranteed.



TRESFJORD 340 MONTE CARLO FLY

GENERAL

Model	TRESFJORD 340 MONTE CARLO FLY
Type	motor yacht
LOA (m)	10,80
Beam (m)	3,62
Draft (m)	0,90
Air draft (m)	3,70
Air draft min (m)	3,35
Headroom (m)	1,98
Year built	1991
Builder	Tresjford
Country	Norway
Displacement (t)	7
CE norm	B
Hull material	GRP
Hull colour	white
Hull shape	deep-V
Rubbing strake	rubber
Deck finish	non-skid moulded in
Superstructure deck finish	non-skid moulded in
Cockpit deck finish	synthetic teak
Antifouling (year)	2023
Dorades	yes
Deckhatch	1x
Flybridge	yes
Flybridge cockpit cover	yes
Fuel tank (litre)	aluminium 690Li
Level indicator (fuel tank)	yes
Freshwater tank (litre)	aluminium 300Li
Blackwater tank (litre)	aluminium 125 Li
Wheel steering	hydraulic



TRESFJORD 340 MONTE CARLO FLY

ACCOMMODATION

Cabins	2
Berths	6
Floor	carpet
Saloon	yes
Heating	diesel ducted hot air WEBASTO Airtop 4900
Dinette to convert into berth	yes
Convertible berth	2.20x1.40
Sliding door to aft deck	yes
Countertop	plastic
Sink	stainless steel
Cooker	calor gas 3x
Oven	Gas
Extractor	yes
Gas alarm	yes
Fridge	47Li Engel
Hot water system	by engine 65 Li
Water pressure system	electrical
Owners cabin	double bed
Bed length (m)	2.0x1.4
Wardrobe	yes
Toilet	separate
Toilet system	electric TMC
Wash basin	in the bathroom
Shower	yes
Extra info	TV in Owners cabin Sharp
Guest cabin 1	double bed
Bed length (m)	1.95x1.40

MACHINERY

No of engines	2
---------------	---



TRESFJORD 340 MONTE CARLO FLY

Make	MerCruiser
Type	D219
HP	180
kW	132.48
Fuel	diesel
Year installed	1991
Maximum speed (kn)	28
Cruising speed (kn)	14
Consumption (l/hr)	14
Engine hours	1530
Drive	Z-drive
Engine controls	electrical Morse Teleflex KE-4
Bowthruster	Schleipner
Battery monitor	Victron 3 banks 12V-30Amp
Battery charger	Victron 3 banks 12V-30Amp
Solar panel	2x120W
Shorepower	with cable
Trimtabs	yes

NAVIGATION

Depth sounder/log	Lowrance Elite 7 HDI
Log	Lowrance Elite 7 HDI
Windset	NASA
VHF	Standaard Horizon GX2000
Rudder angle indicator	yes
GPS	yes
Plotter/GPS	LOWRANCE Elite 7 HDI
Wifi antenna	Alpha 4G 3pro 2+
AIS receiver	Easysplit Easy
AIS transponder	Nasa AIS
Navigation lights	yes



EQUIPMENT

Storm blinds	yes
Cockpit cover	yes
Bimini	yes
Cockpit cushions	yes
Cockpit table	yes
Bathing platform	yes
Transom door	yes
Deck shower	WARM+COLD
Anchor	Danforth 25kg
Anchor chain	30m
Anchor 2	Bruce 12kg
Anchor chain	20m
Davits	aluminum
Wiper	2x
Horn	yes
Fenders	yes
Mooring lines	yes
TV	Sharp + Ok
Radio	Jenssen MS30
Cockpit speakers	yes
Fire extinguisher	yes



TRESFJORD 340 MONTE CARLO FLY



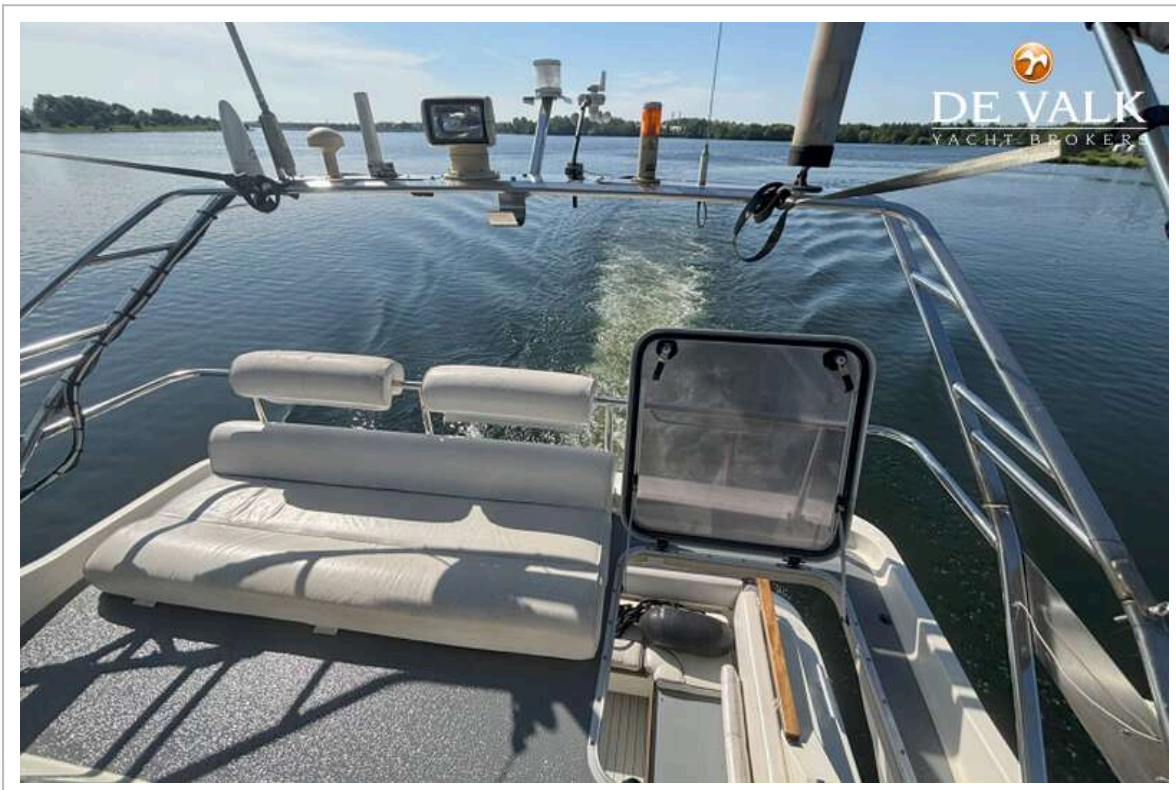
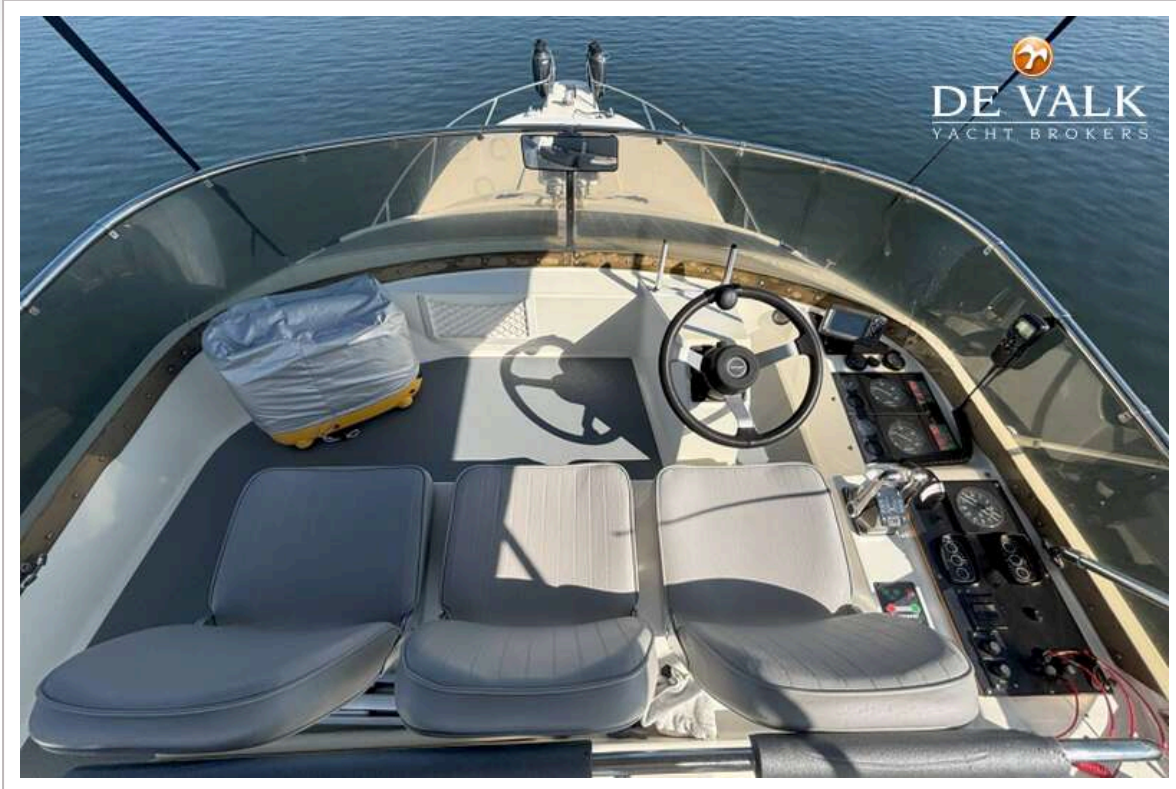
TRESFJORD 340 MONTE CARLO FLY



TRESFJORD 340 MONTE CARLO FLY



TRESFJORD 340 MONTE CARLO FLY



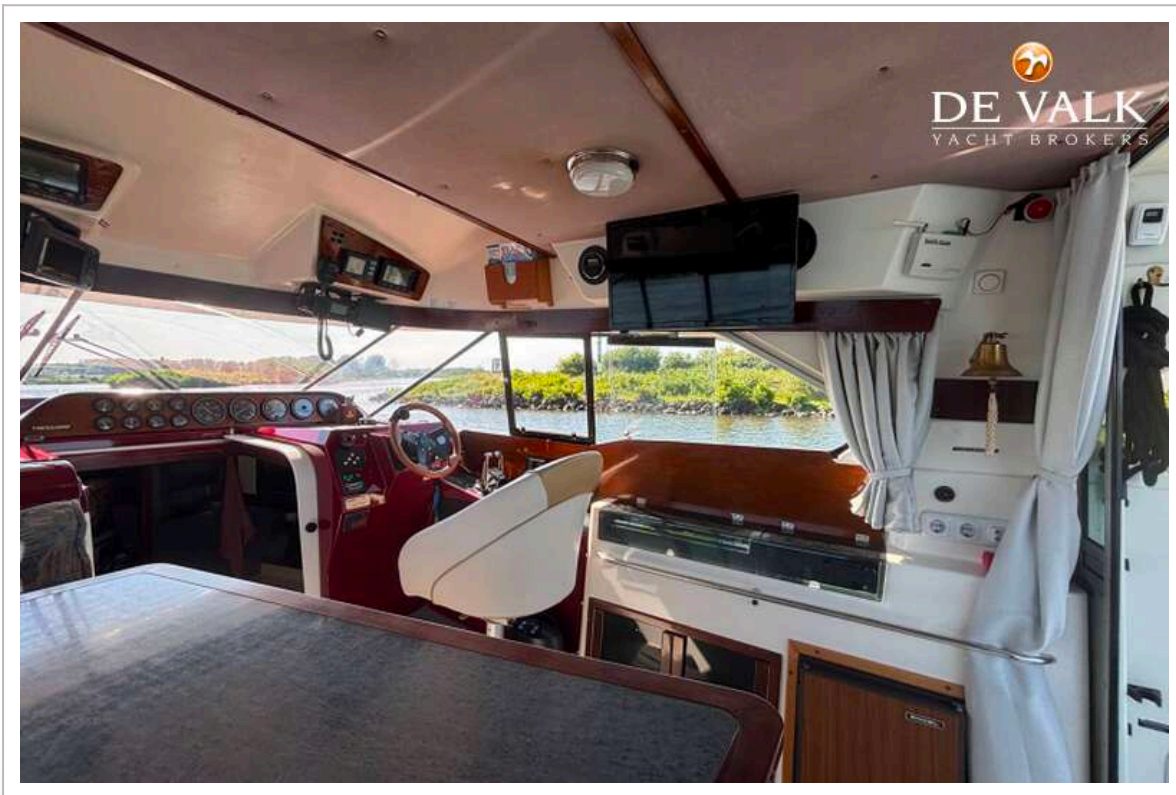
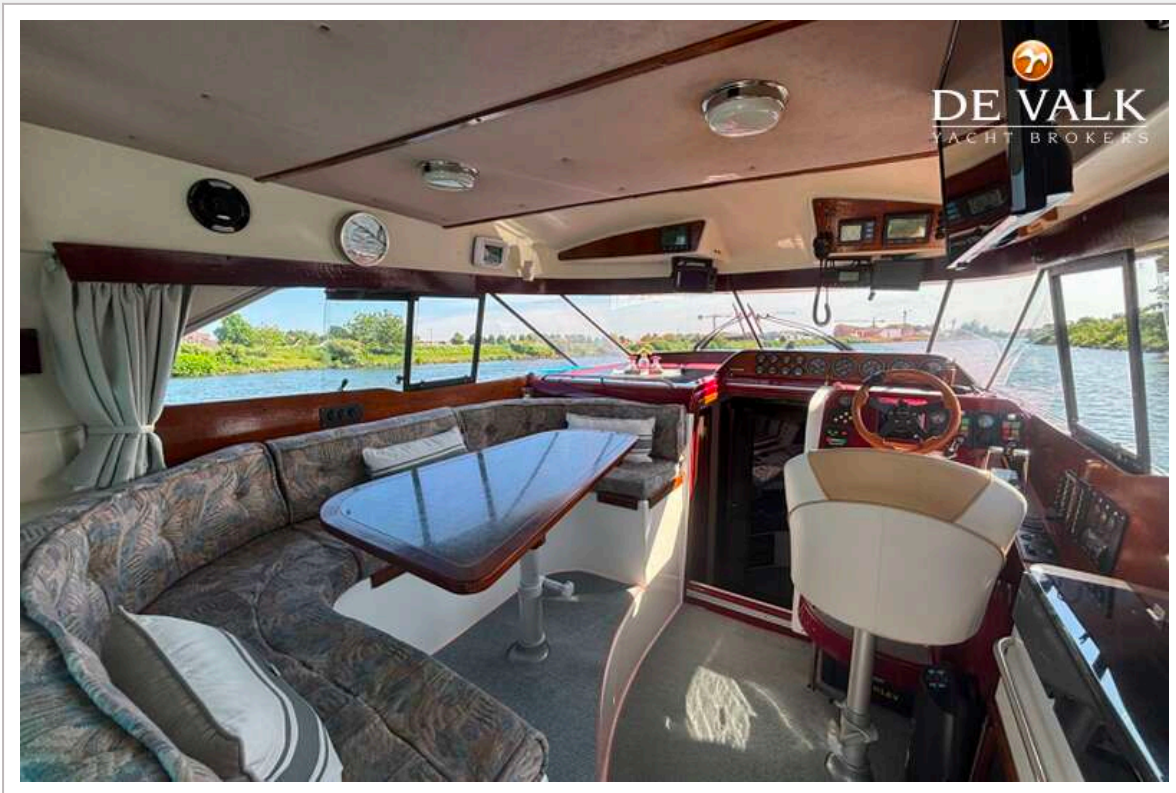
TRESFJORD 340 MONTE CARLO FLY



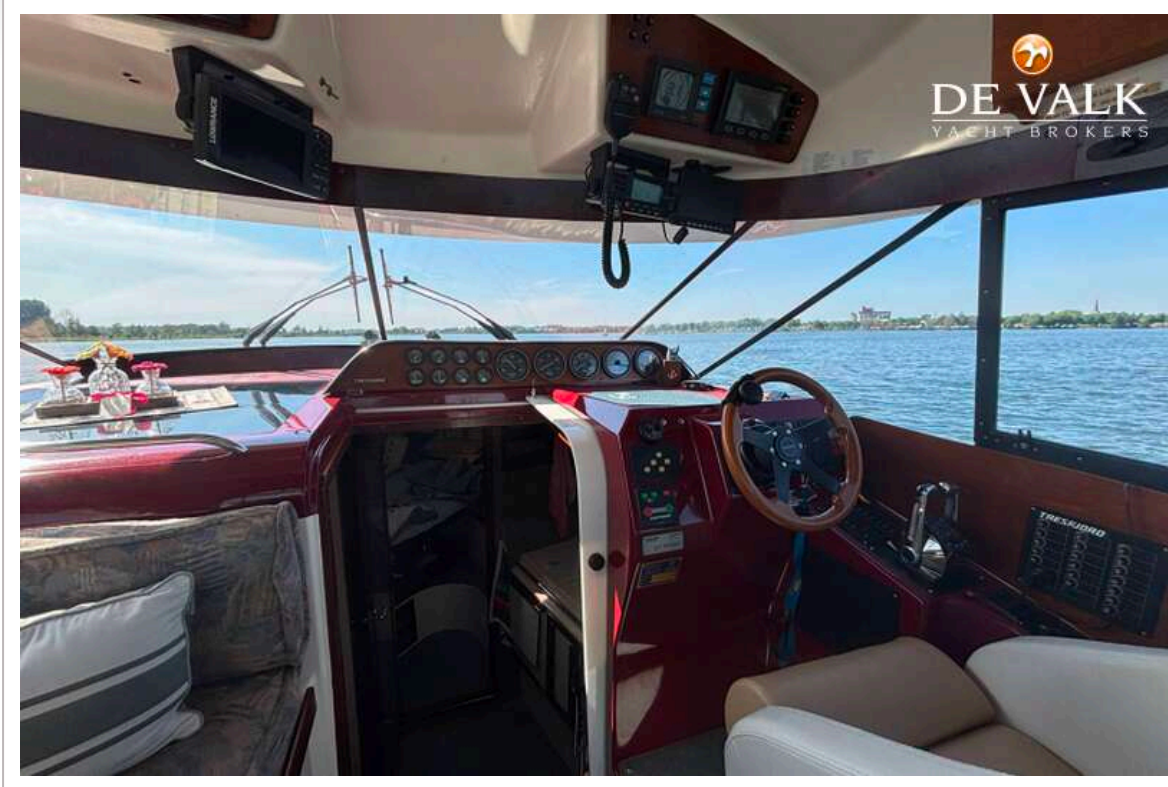
TRESFJORD 340 MONTE CARLO FLY



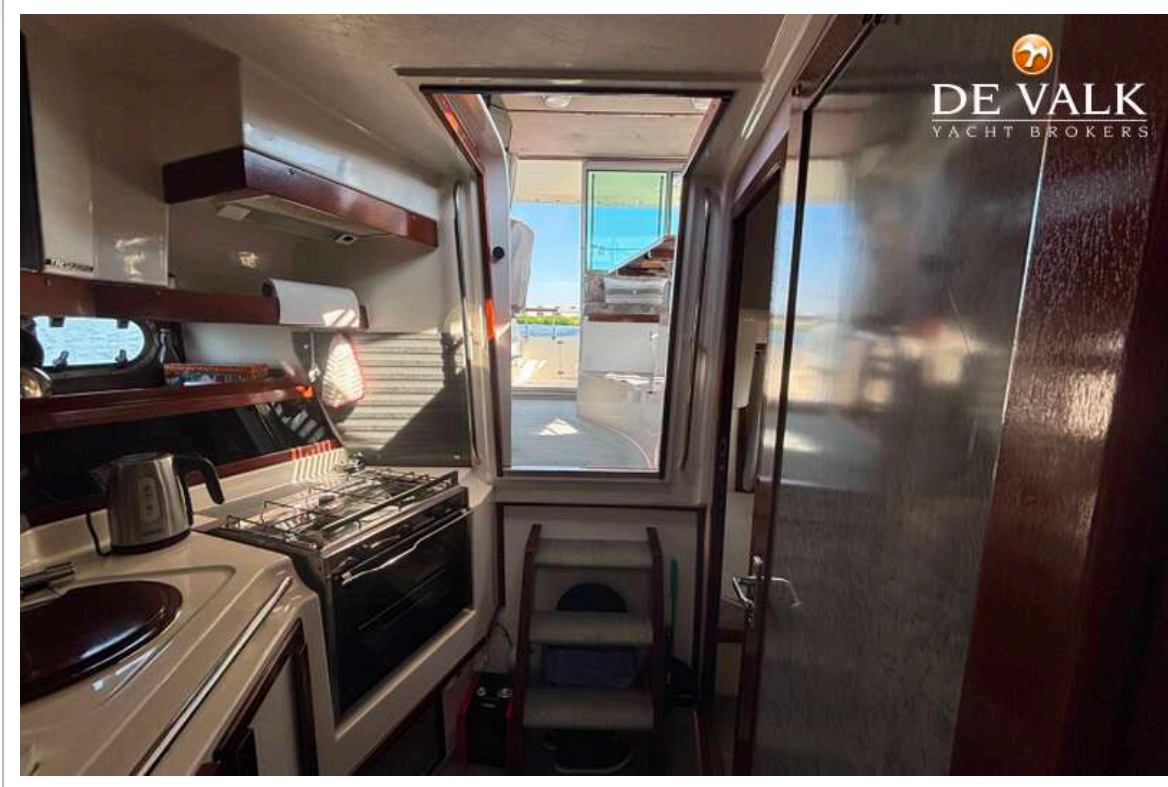
TRESFJORD 340 MONTE CARLO FLY

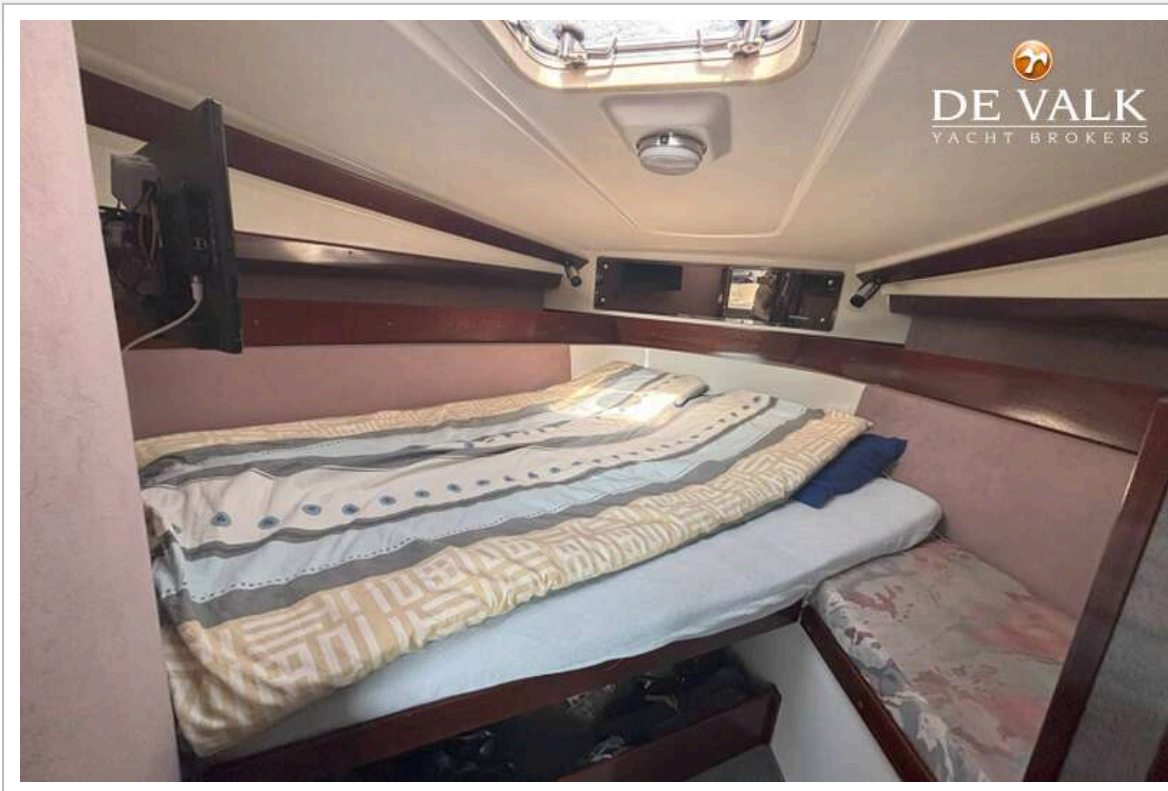


TRESFJORD 340 MONTE CARLO FLY

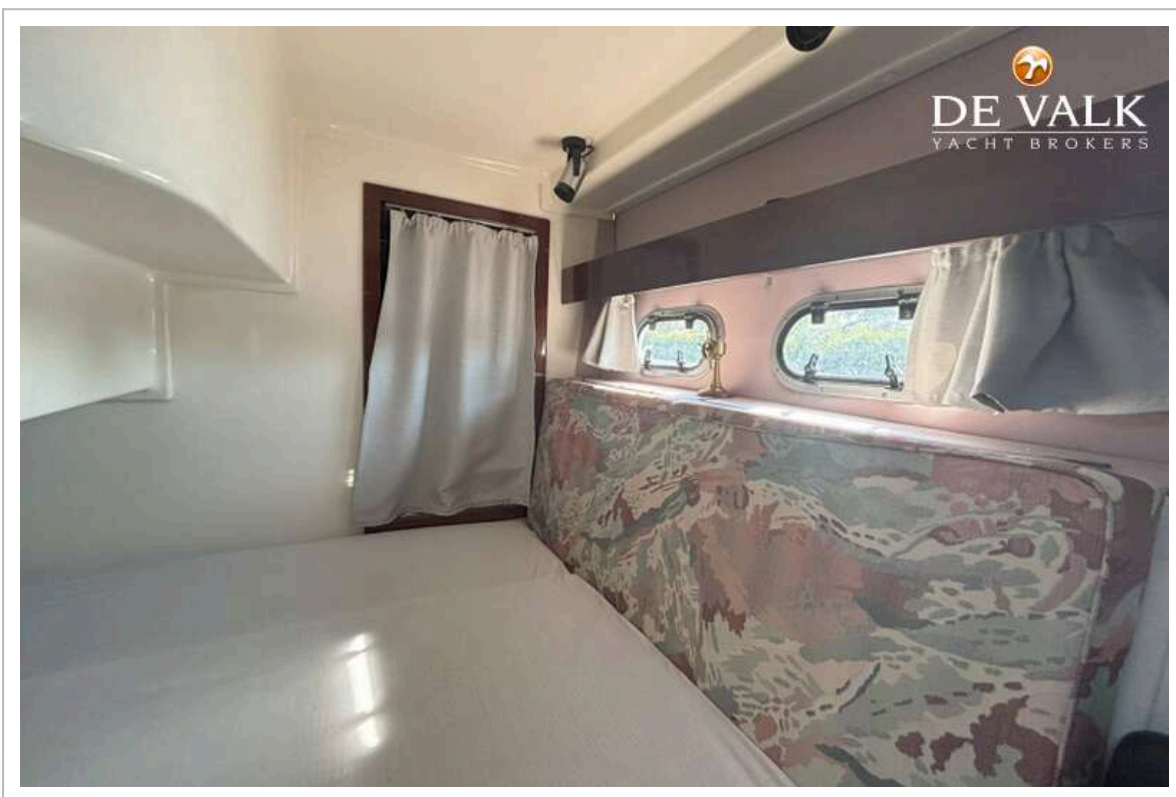


TRESFJORD 340 MONTE CARLO FLY





TRESFJORD 340 MONTE CARLO FLY



TRESFJORD 340 MONTE CARLO FLY



TRESFJORD 340 MONTE CARLO FLY



