



FIAT 35 SEAWALKER



FIART 35 SEAWALKER

BROKER'S COMMENTS

Discover the Fiart Seawalker 35 – a sleek and powerful sport cruiser that combines Italian design with exceptional performance. Spacious sunbathing areas, a stylish helm, and a refined cabin make it perfect for both day trips and weekend escapes. With top-tier craftsmanship and comfort throughout, the Seawalker 35 offers an unforgettable yachting experience. For more information please contact us.

Julian de Heer

SPECIFICATIONS

| | | | |
|---------------------|-------------------------------|----------------|------------------------------|
| Dimensions | 11.56 x 3.82 x 0.67 (m) | Builder | |
| Built | 2022 | Cabins | 1 |
| Material | GRP | Berths | 4 |
| Engine(s) | 2 x Volvo Penta D4-320 diesel | Hp/Kw | 2 x 320.00 (hp), 235.52 (kw) |
| Asking price | € 395.000 (VAT Not paid) | Lying | at sales office |

CONTACT

| | | | |
|---------------------|--|------------------|----------------------|
| Sales office | De Valk Loosdrecht B.V. | Telephone | +31 (0)35 582 90 30 |
| Address | 't Breukeleveense Meentje 6 1231LM Loosdrecht / Wijdmeren NL | E-mail | loosdrecht@devalk.nl |

DISCLAIMER

These particulars are given in good faith as supplied but cannot be guaranteed.



FIART 35 SEAWALKER

GENERAL

| | |
|------------------------------|------------------------|
| Model | FIART 35 SEAWALKER |
| Type | motor yacht |
| LOA (m) | 11,56 |
| Beam (m) | 3,82 |
| Draft (m) | 0,67 |
| Headroom (m) | 1,95 |
| Year built | 2022 |
| Country | Italy |
| Displacement (t) | 5,5 |
| CE norm | B |
| Hull material | GRP |
| Hull colour | white |
| Hull shape | yes |
| Superstructure material | GRP |
| Deck material | GRP |
| Deck finish | teak |
| Cockpit deck finish | teak |
| Window frame | aluminium |
| Window material | glass |
| Deckhatch | 1x |
| Fuel tank (litre) | stainless steel 767 |
| Level indicator (fuel tank) | Garmin screen |
| Freshwater tank (litre) | 250 |
| Level indicator (freshwater) | Garmin screen |
| Blackwater tank (litre) | polyethylene 60 |
| Level indicator (blackwater) | Garmin screen |
| Blackwater tank extraction | deck extraction + pump |
| Wheel steering | powersteer |
| Outside helm position | yes |



FIART 35 SEAWALKER

ACCOMMODATION

| | |
|-------------------------|--|
| Cabins | 1 |
| Berths | 4 |
| Interior | yes |
| Floor | wood |
| Open cockpit | yes |
| Sliding door to cockpit | yes |
| Sink | stainless steel |
| Cooker | induction |
| Fridge | yes |
| Hot water system | 220V + engine Isotherm 40 liter boiler |
| Water pressure system | electrical |
| Owners cabin | double bed |
| Wardrobe | drawers |
| Bathroom | shared |
| Toilet | shared |
| Toilet system | electric Tecma |
| Wash basin | in the bathroom |
| Shower | shared |
| Guest cabin 1 | twin single |
| Wardrobe | shelves |
| Wet bar | yes |

MACHINERY

| | |
|----------------|-------------|
| No of engines | 2 |
| Make | Volvo Penta |
| Type | D4-320 |
| HP | 320 |
| kW | 235.52 |
| Fuel | diesel |
| Year installed | 2022 |



FIART 35 SEAWALKER

| | |
|--------------------------|--------------------------------------|
| Maximum speed (kn) | 40 |
| Cruising speed (kn) | 30 |
| Engine hours | 90 |
| Engine cooling system | freshwater heat exchanger |
| Drive | stern |
| Engine controls | electrical |
| Gearbox | hydraulic |
| Engine controls | electrical |
| Bowthruster | electric Sidepower |
| Gearbox | hydraulic |
| Propeller type | fixed |
| Propeller blades | Volvo Penta Duoprops |
| Propeller shaft material | stainless steel |
| Shaft lubrication | water |
| Electric bilge pump | yes |
| Electrical installation | 12V/230V |
| Batteries | 4X Wilco 12V-140Ah |
| Battery charger | Mastervolt Chargemaster plus 12-50/3 |
| Shorepower | with cable |
| Trimtabs | Zipwake |

NAVIGATION

| | |
|------------------------|-----------------------------|
| Compass | yes |
| Multi control display | Garmin |
| Depth sounder/log | Integrated in Garmin screen |
| VHF | Garmin |
| Rudder angle indicator | Integrated in Garmin screen |
| Plotter/GPS | Garmin |
| Navigation lights | yes |

EQUIPMENT



FIART 35 SEAWALKER

| | |
|----------------------------|------------------------|
| Fixed windscreen | yes |
| Cockpit cover | yes |
| Bimini | yes |
| Cockpit cushions | yes |
| Cockpit table | yes |
| Bathing platform | Lowered hydraulic |
| Anchor | yes |
| Anchor chain | yes |
| Windlass | electrical |
| Railing side opening gates | Foldable bulwark doors |
| Horn | yes |
| Fenders | yes |
| Mooring lines | yes |
| Surround Sound System | Fusion MS-RA770 |
| Cockpit speakers | yes |
| Speakers in salon | yes |
| Speakers in cabin | yes |



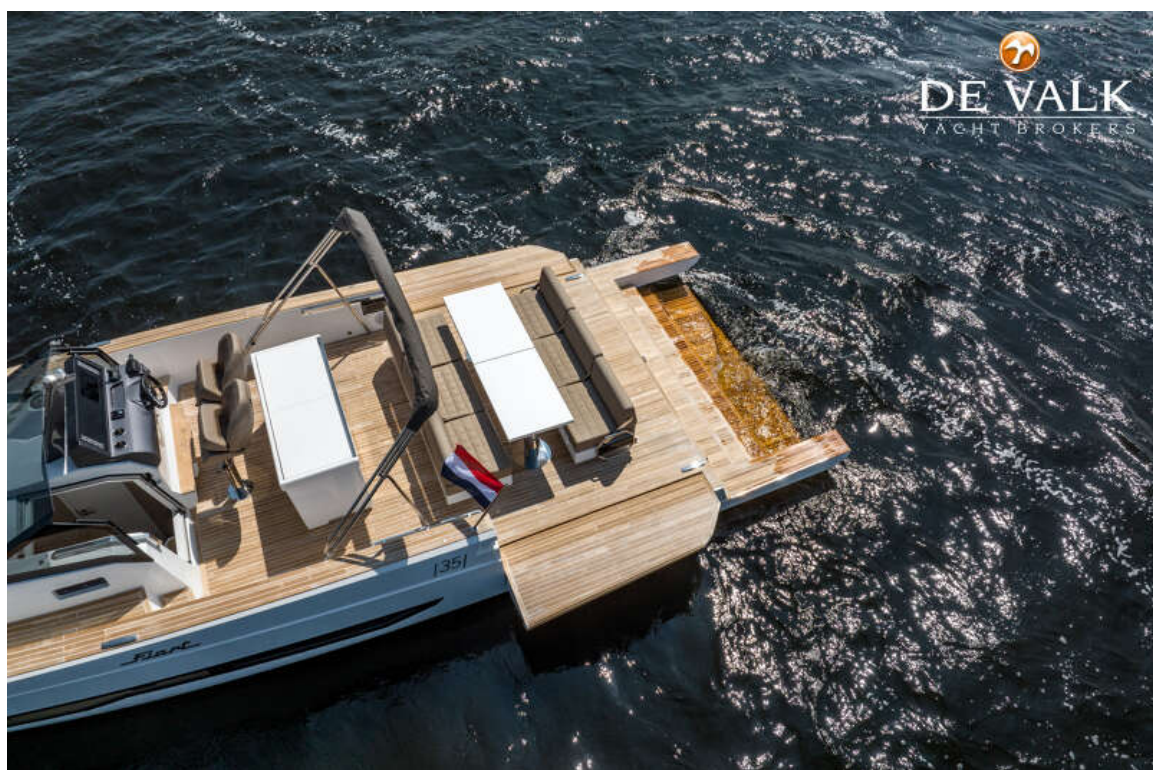
FIART 35 SEAWALKER



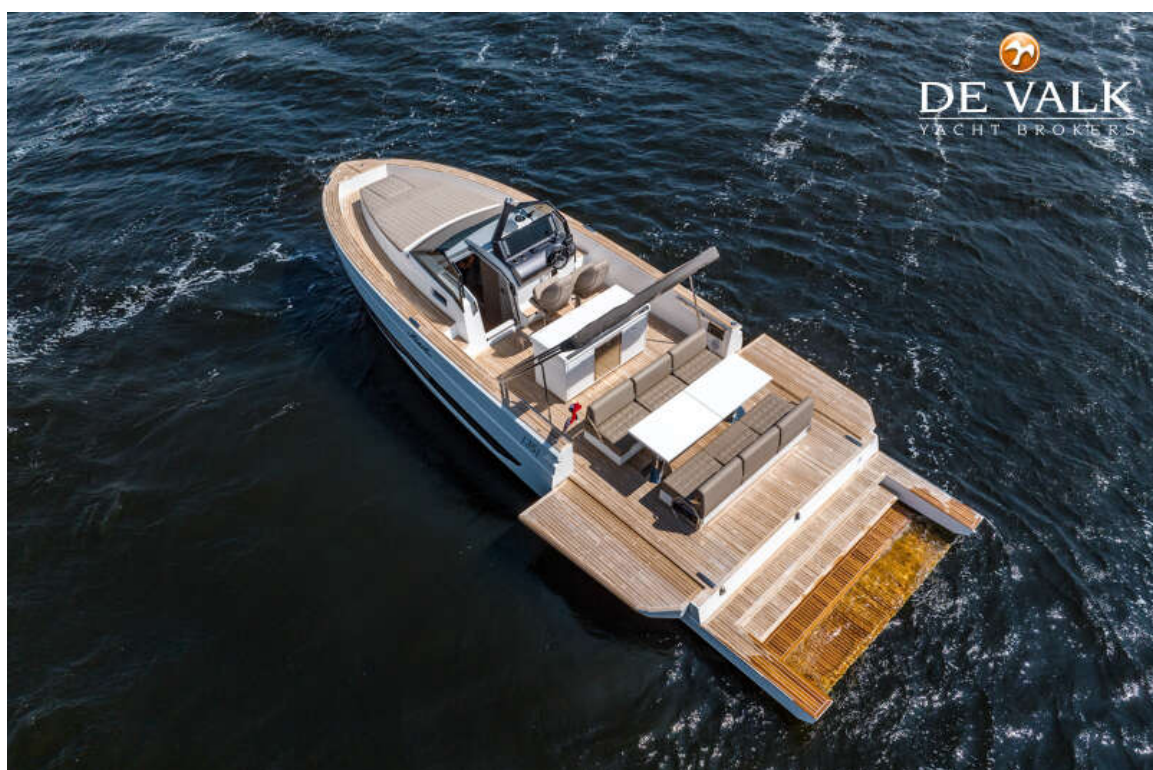
FIAT 35 SEAWALKER



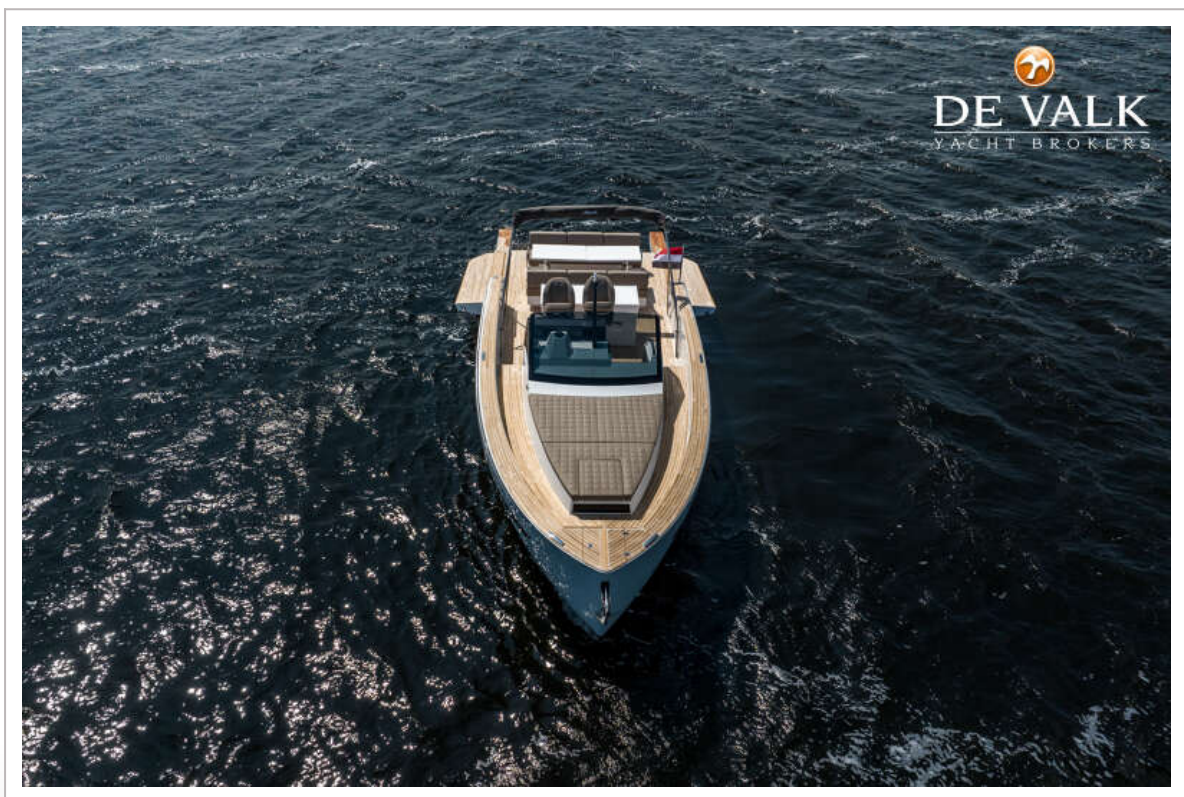
FIART 35 SEAWALKER



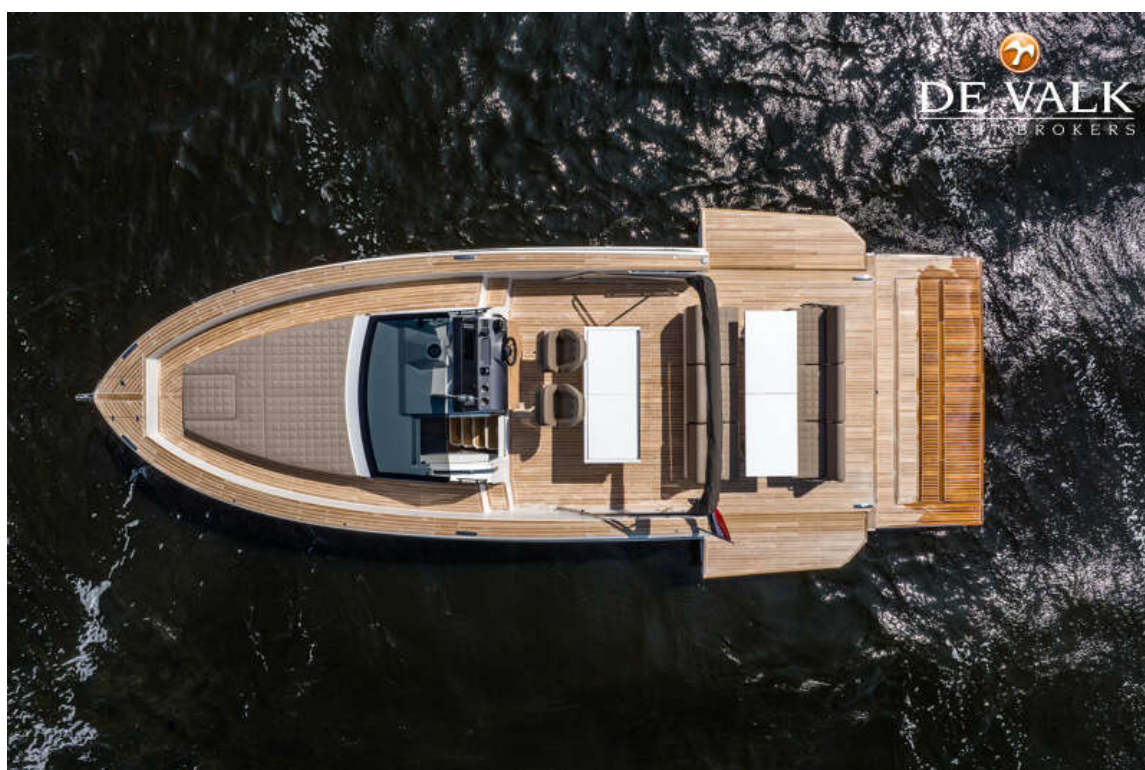
FIART 35 SEAWALKER



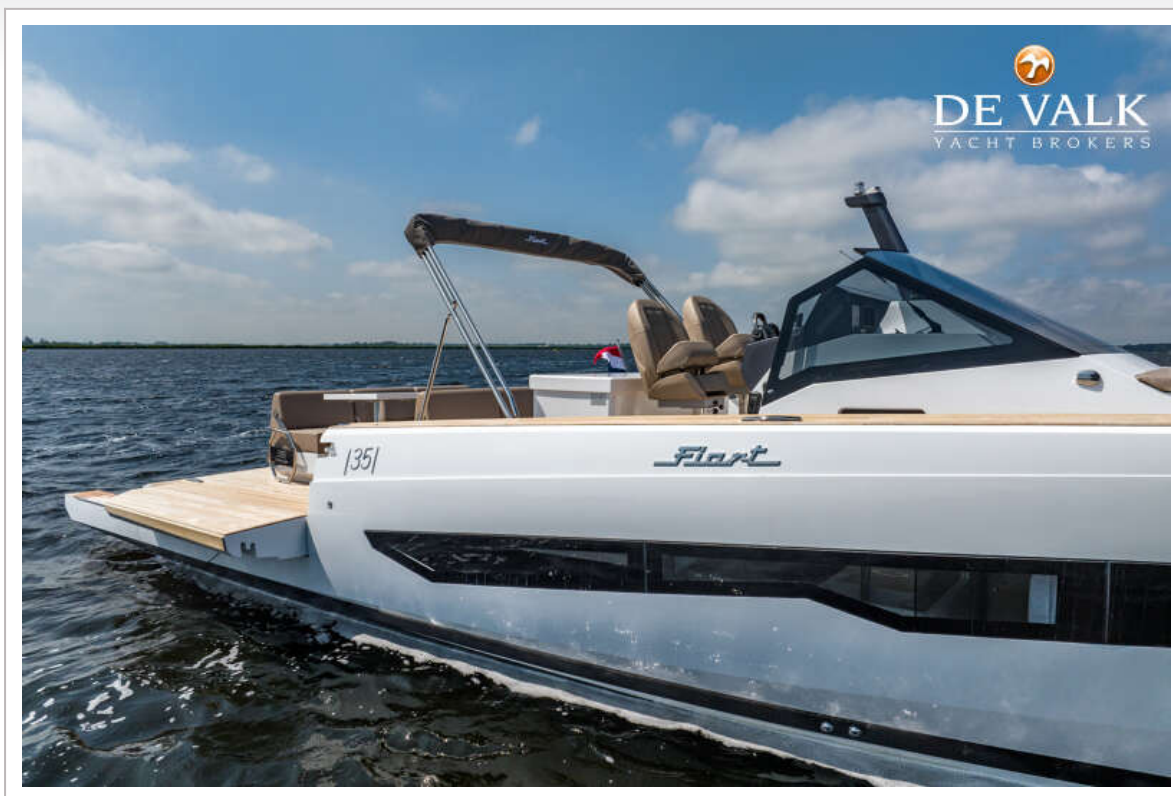
FIART 35 SEAWALKER



FIAT 35 SEAWALKER



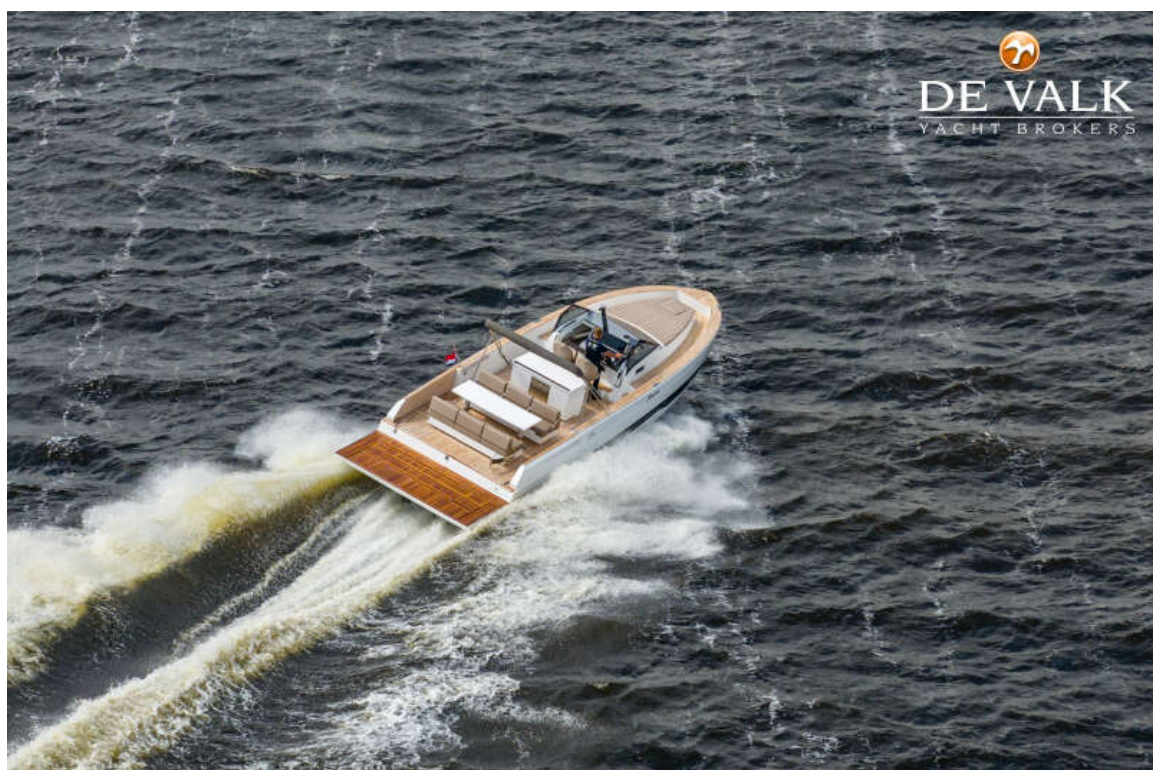
FIAT 35 SEAWALKER



FIART 35 SEAWALKER



FIART 35 SEAWALKER



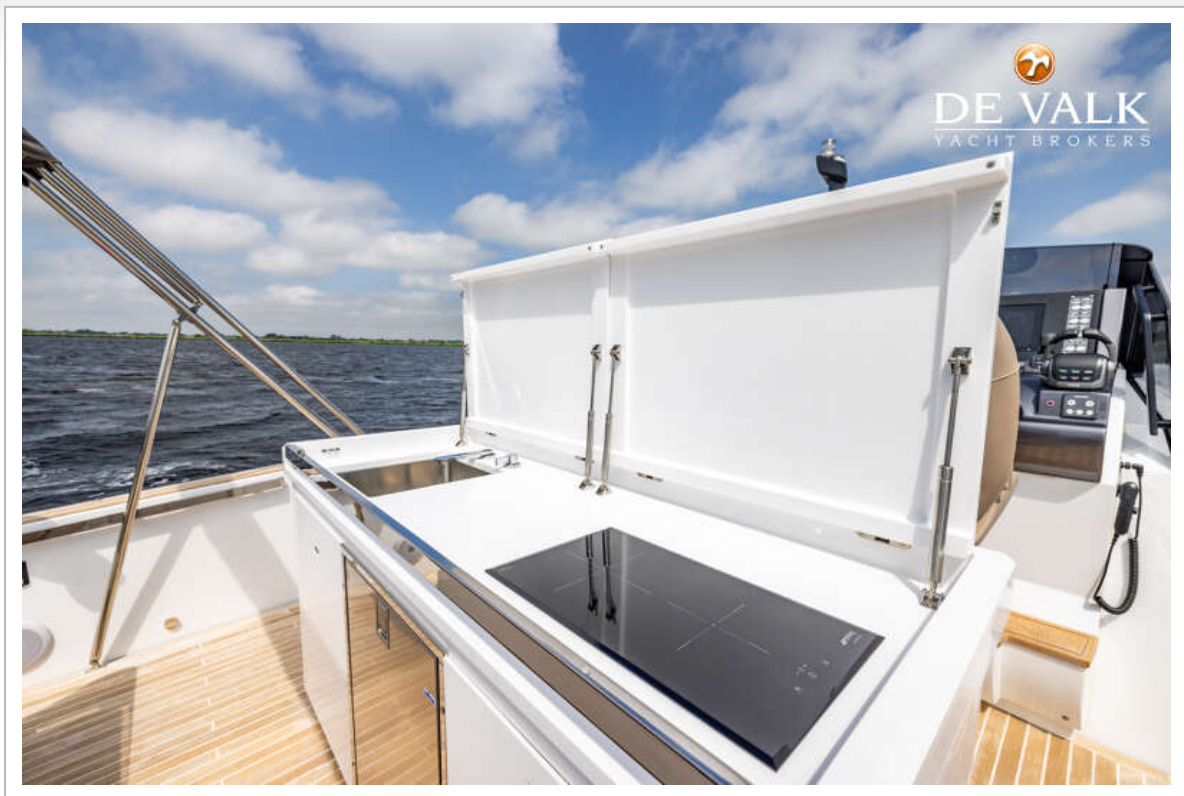
FIART 35 SEAWALKER



FIART 35 SEAWALKER



FIART 35 SEAWALKER



FIAT 35 SEAWALKER



FIART 35 SEAWALKER



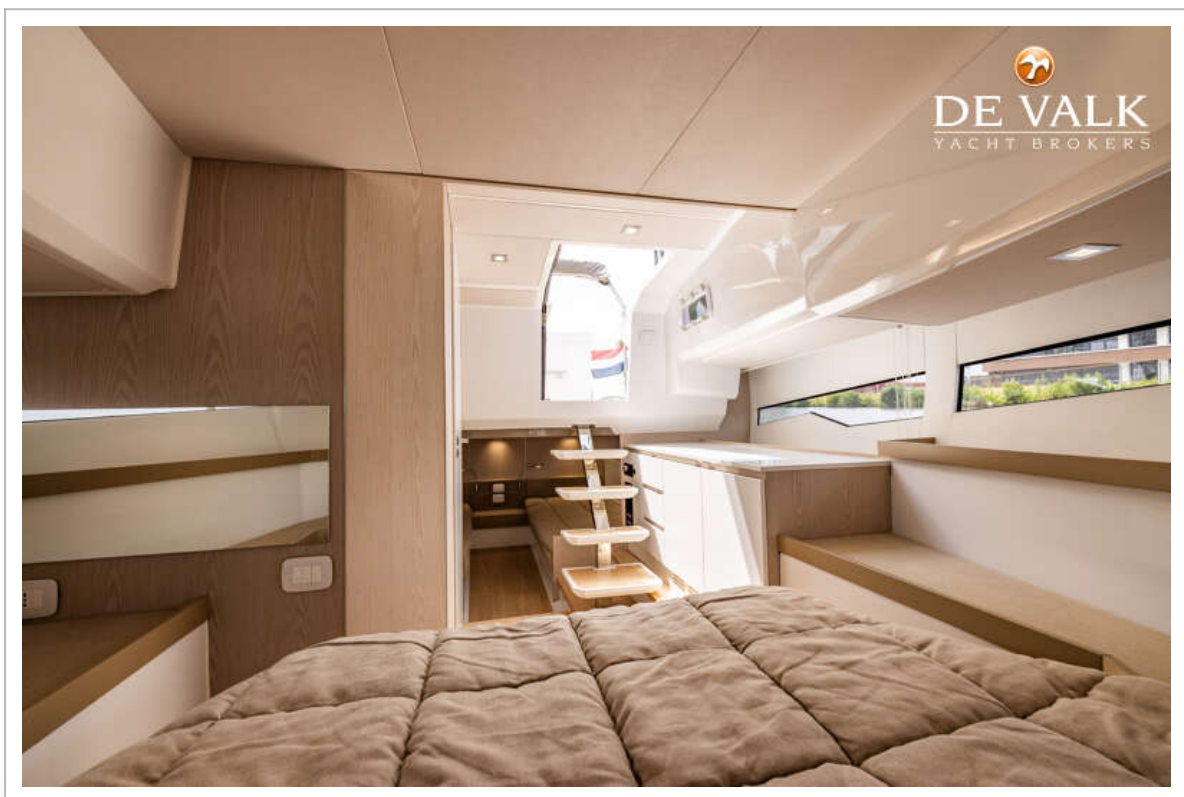
FIART 35 SEAWALKER



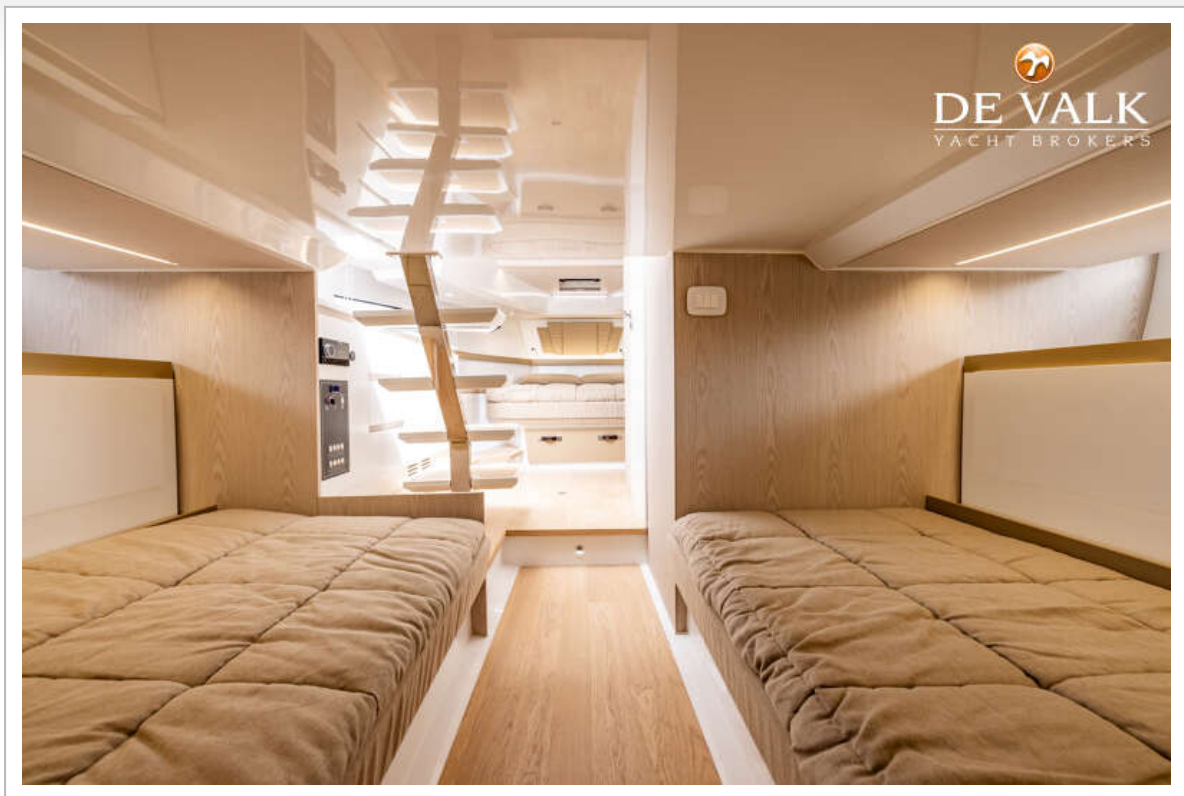
FIART 35 SEAWALKER



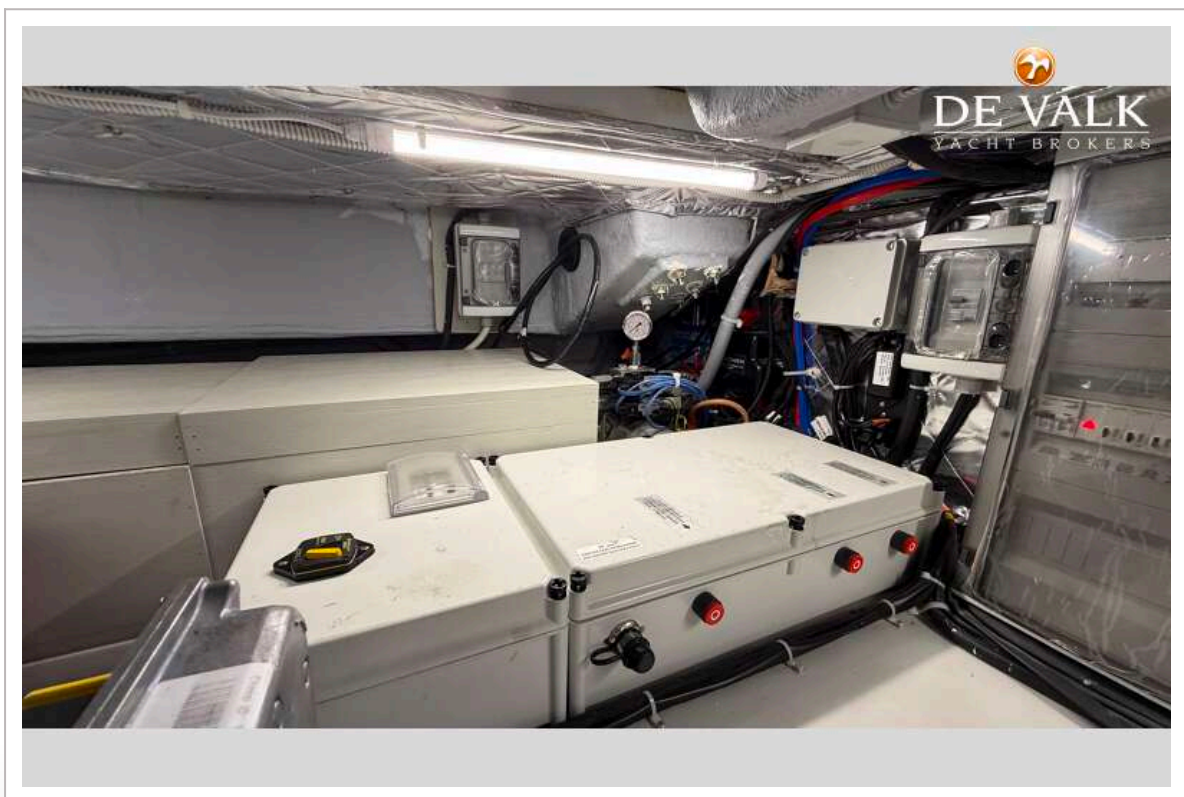
FIART 35 SEAWALKER



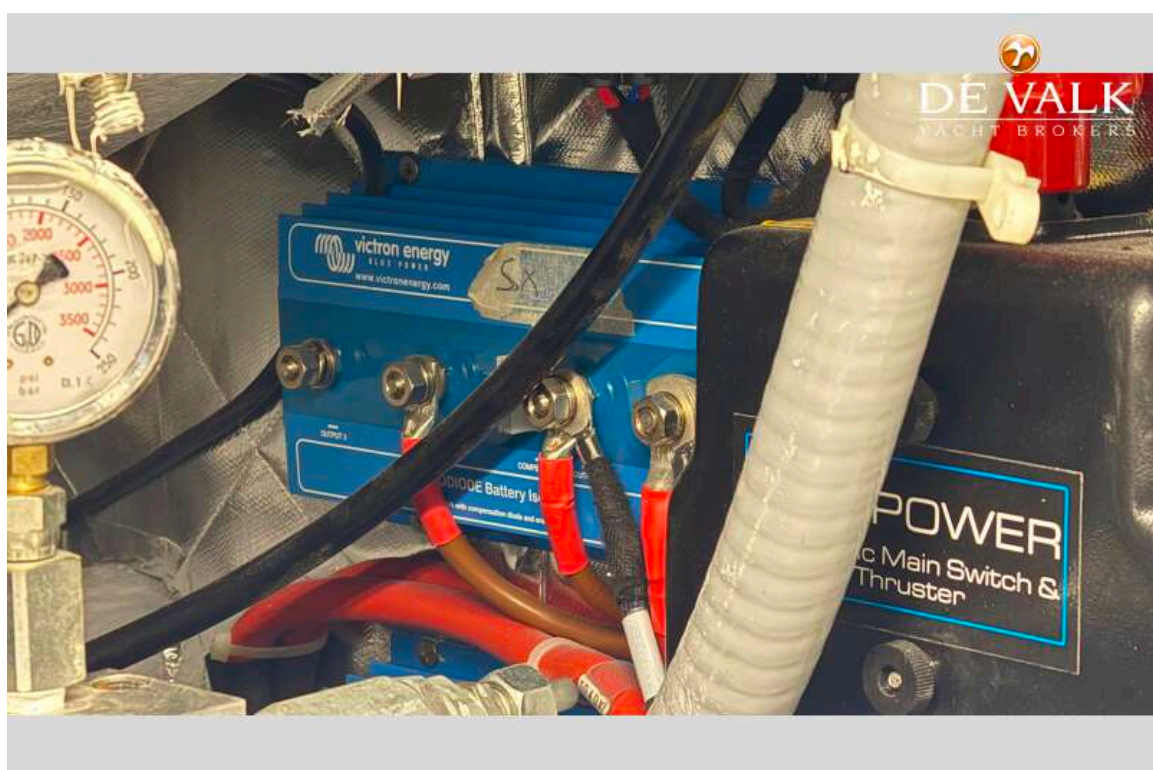
FIART 35 SEAWALKER



FIART 35 SEAWALKER



FIART 35 SEAWALKER



FIART 35 SEAWALKER



FIART 35 SEAWALKER

