



DE VALK  
YACHT BROKERS



## HANS CHRISTIAN 43



DE VALK  
YACHT BROKERS

## BROKER'S COMMENTS

Cutter rigged ketch with various sails and Lewmar winches, and offers accommodation for 8 people in double and single cabins. This yacht is crafted with a fiberglass hull and features solid teak woodwork and bronze fittings. It is equipped with a long keel and a 66 hp Yanmar diesel engine, overhauled in 2021

*Sofia Iliia-Salvanou*

## SPECIFICATIONS

<b>Dimensions</b>	14.00 x 4.22 x 2.03 (m)	<b>Builder</b>	King Dragon (SGP)
<b>Built</b>	1989	<b>Cabins</b>	3
<b>Material</b>	GRP	<b>Berths</b>	8
<b>Engine(s)</b>	1 x YANMAR Turbo 22361 diesel	<b>Hp/Kw</b>	66.00 (hp), 48.58 (kw)
<b>Asking price</b>	€ 179.000 (VAT Paid)	<b>Lying</b>	elsewhere / Not at sales office

## CONTACT

<b>Sales office</b>	De Valk Corfu	<b>Telephone</b>	(+30) 6948681503
<b>Address</b>	New Port of Corfu, near Gouvia Marina 490 83 Corfu GR	<b>E-mail</b>	corfu@devalk.nl

## DISCLAIMER

These particulars are given in good faith as supplied but cannot be guaranteed.



## GENERAL

<b>Model</b>	HANS CHRISTIAN 43
<b>Type</b>	sailing yacht
<b>LOA (m)</b>	14,00
<b>Beam (m)</b>	4,22
<b>Draft (m)</b>	2,03
<b>Year built</b>	1989
<b>Builder</b>	King Dragon (SGP)
<b>Country</b>	Taiwan
<b>Designer</b>	Robert Perry
<b>Displacement (t)</b>	18
<b>Hull material</b>	GRP
<b>Hull colour</b>	white
<b>Keel type</b>	long keel
<b>Superstructure material</b>	GRP
<b>Deck material</b>	GRP
<b>Deck finish</b>	teak
<b>Cockpit deck finish</b>	teak
<b>Window frame</b>	Bronze
<b>Deckhatch</b>	With fly screens
<b>Portholes</b>	With fly screens
<b>Fuel tank (litre)</b>	X 2 (total 500 Lt)
<b>Freshwater tank (litre)</b>	X 2 (total 700 Lt)
<b>Blackwater tank (litre)</b>	X1 (80 Lt)
<b>Wheel steering</b>	Whitlock
<b>Outside helm position</b>	yes
<b>Extra info</b>	Sewing machine, Vacuum cleaner, various warps & snubbers
<b>Extra info</b>	X 2 folding bicycles

## ACCOMMODATION

<b>Cabins</b>	3
---------------	---



Berths	8
Saloon	yes
Dinette	yes
Dinette to convert into berth	yes
Opening door to cockpit	yes
Opening door to aft deck	yes
Galley	yes
Countertop	yes
Sink	Double
Cooker	Gas x 3 Burners
Oven	& Grill
Fridge	Plus Cool Box
Hot water system	yes
Water pressure system	yes
Hot water tap	yes
Crockery	yes
Owners cabin	double bed
Wardrobe	yes
Bathroom	yes
Toilet	yes
Wash basin	yes
Shower	yes
Guest cabin 1	double bed
Wardrobe	yes
Bathroom	yes
Toilet	yes
Wash basin	yes
Shower	yes
Guest cabin 2	single bed
Wardrobe	yes
Bathroom	yes
Toilet	yes



Wash basin	yes
Shower	yes
Washing machine/dryer combi	220 V
Central vacuum cleaner	Portable vacuum cleaner
Extra info	Bosun Chair, 3 Gas bottles, Water filters, Water hoses & connect
Extra info	Flash lights & hand spotlights & Nautical Maps for Mediterranean

## MACHINERY

No of engines	1
Make	YANMAR
Type	Turbo 22361
HP	66
kW	48.58
Fuel	diesel
Year installed	1989
Year of overhaul	2021
Drive	shaft
Shaft seal	yes
Propeller type	fixed
Propeller blades	3
Propeller shaft material	stainless steel
Manual bilge pump	yes
Electric bilge pump	yes
Batteries	yes
Start battery	X 1
Service battery	X 4 180 Ah
Battery monitor	yes
Battery charger	Victron
Inverter	Victron 1750 W
Shorepower	with cable



## NAVIGATION

Compass	Analogue & Electronic
Depth sounder	Lowrance
Windset	yes
Fish finder	Lowrance
VHF	yes
VHF handheld	yes
Autopilot	Garmin with Hydro technology
Radar	Koden MD 3441
Plotter	Lowrance. Global map 7500

## EQUIPMENT

Sun awning	X 4
Winter cover	yes
Cockpit cushions	yes
Cockpit table	yes
Boarding ladder	yes
Gangway	yes
Anchor	yes
Anchor chain	60 m x 10 mm
Anchor 2	Danforth 10 Kg
Anchor chain	Rope line
Windlass	electrical Muir 1200 W with cockpit control
Dinghy	4,6 m Inflatable with hard bottom
Outboard	Mercury 6 Hp
Sea railing	yes
Lifejackets	X 6 (x 2 self inflating)
Safety harness	X 2
Lifebuoy	yes
Fenders	yes
Mooring lines	yes

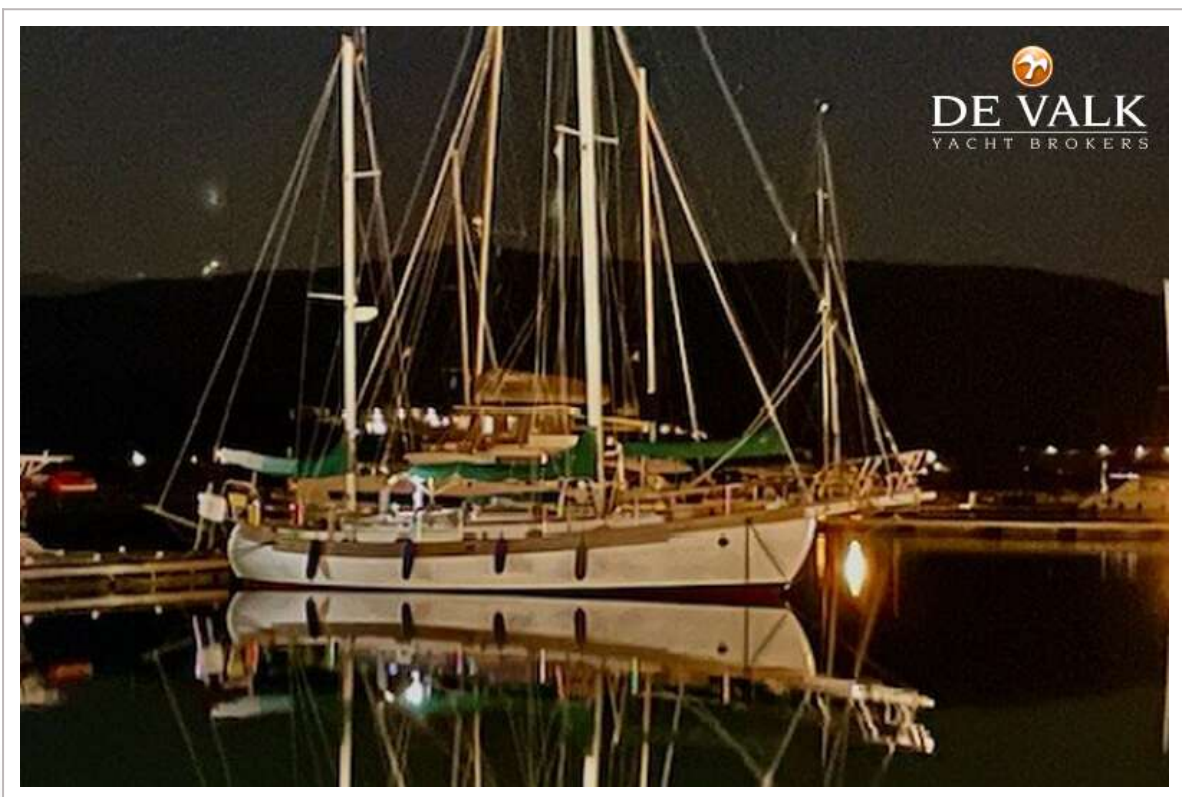


<b>Tools</b>	yes
<b>TV</b>	Android smart TV 80 cm
<b>Radio-cd player</b>	yes
<b>Clock - barometer</b>	yes
<b>Fire extinguisher</b>	yes
<b>Extra info</b>	Diving equipment for two people, Goggles & Snorkels & Fins,
<b>Extra info</b>	X3 Wet suits

## RIGGING

<b>Rigging</b>	cutter Ketch
<b>Standing rigging</b>	wire
<b>Material mast</b>	aluminium
<b>Spreaders</b>	yes
<b>Mainsail</b>	yes
<b>Cutterstay</b>	yes
<b>Mizzen</b>	yes
<b>Genoa</b>	yes
<b>Halyard winches</b>	Lewmar bronze all
<b>Reefing winch</b>	Lewmar bronze all
<b>Multifunctional winches</b>	X 7 Lewmar bronze all

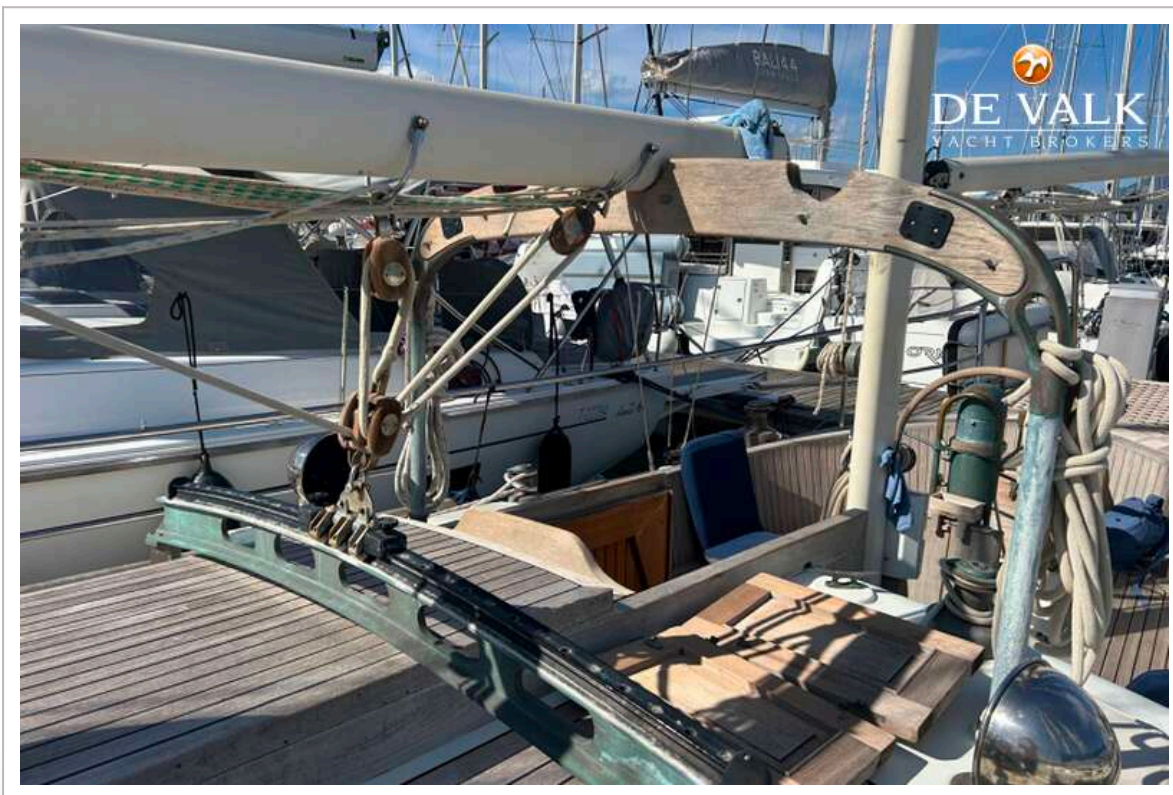




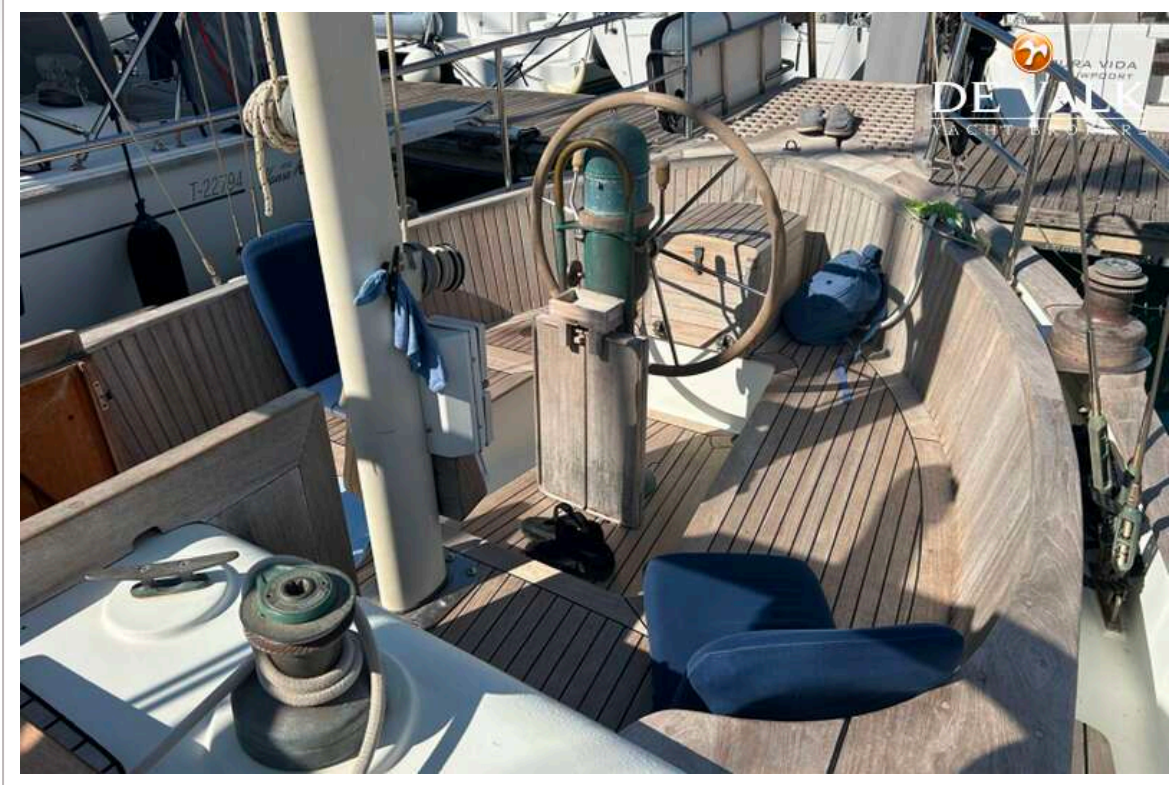
# HANS CHRISTIAN 43



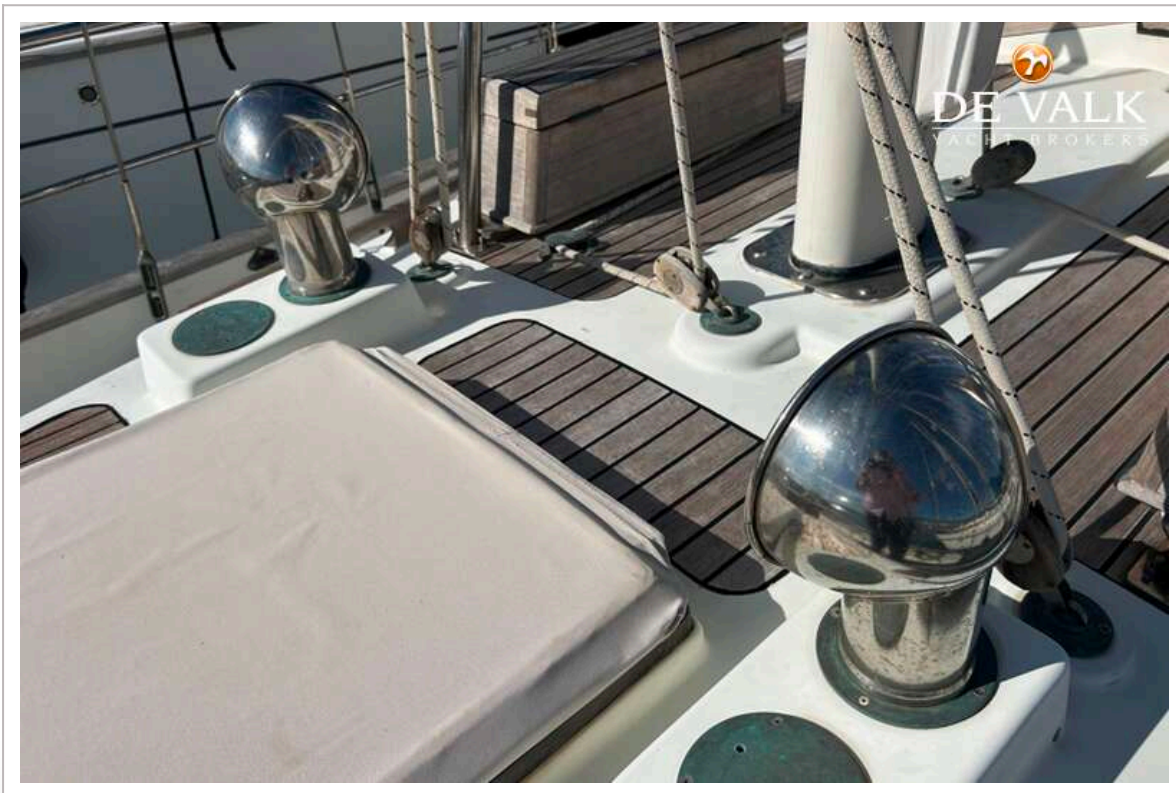
# HANS CHRISTIAN 43



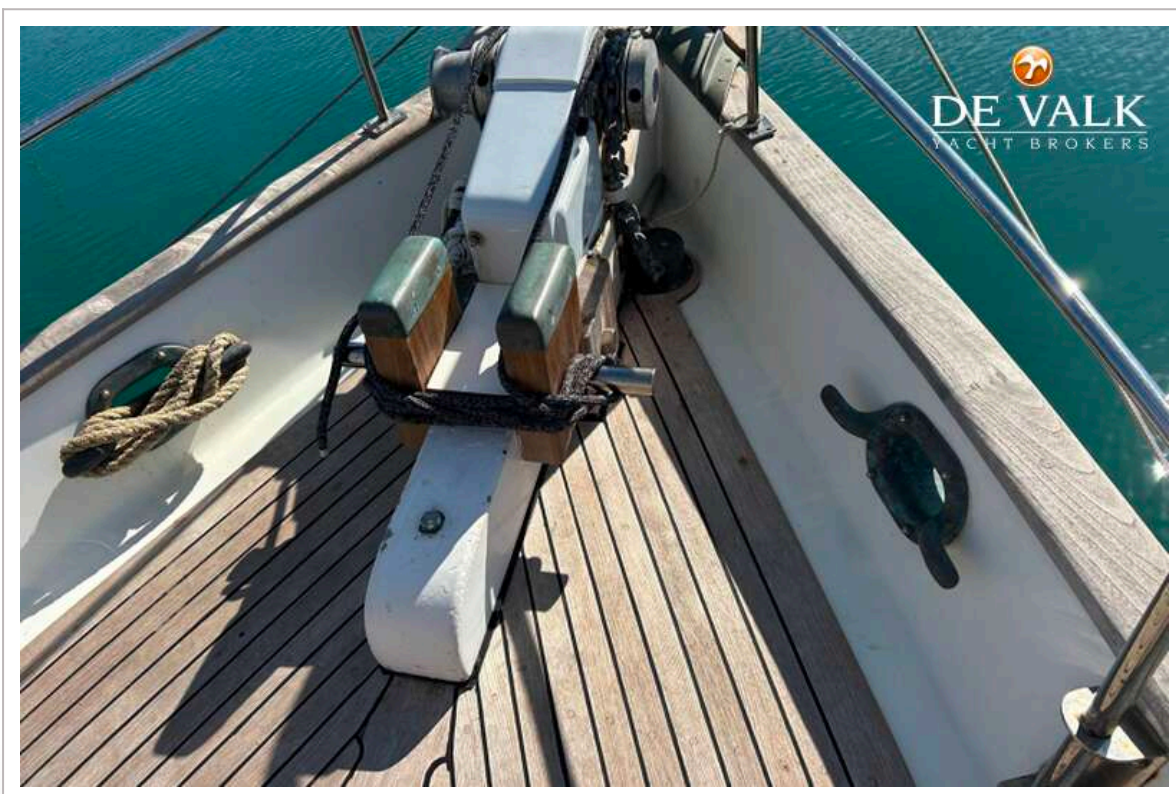
# HANS CHRISTIAN 43



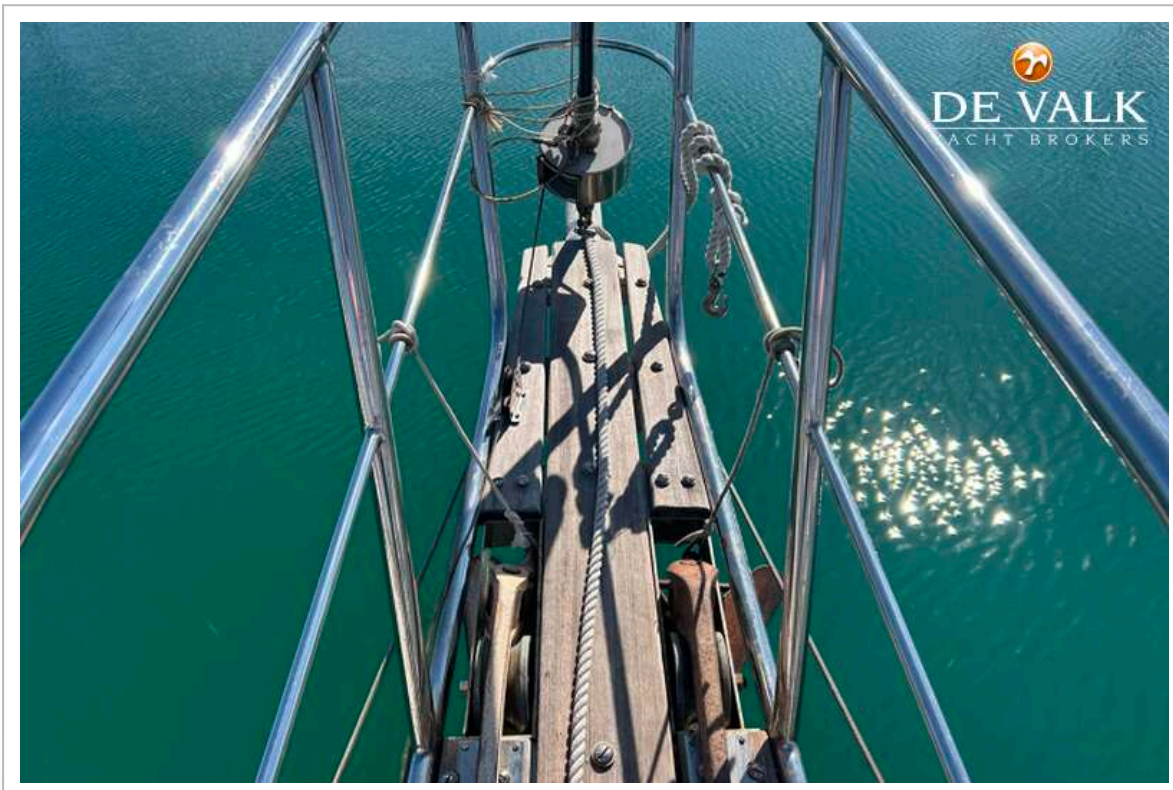
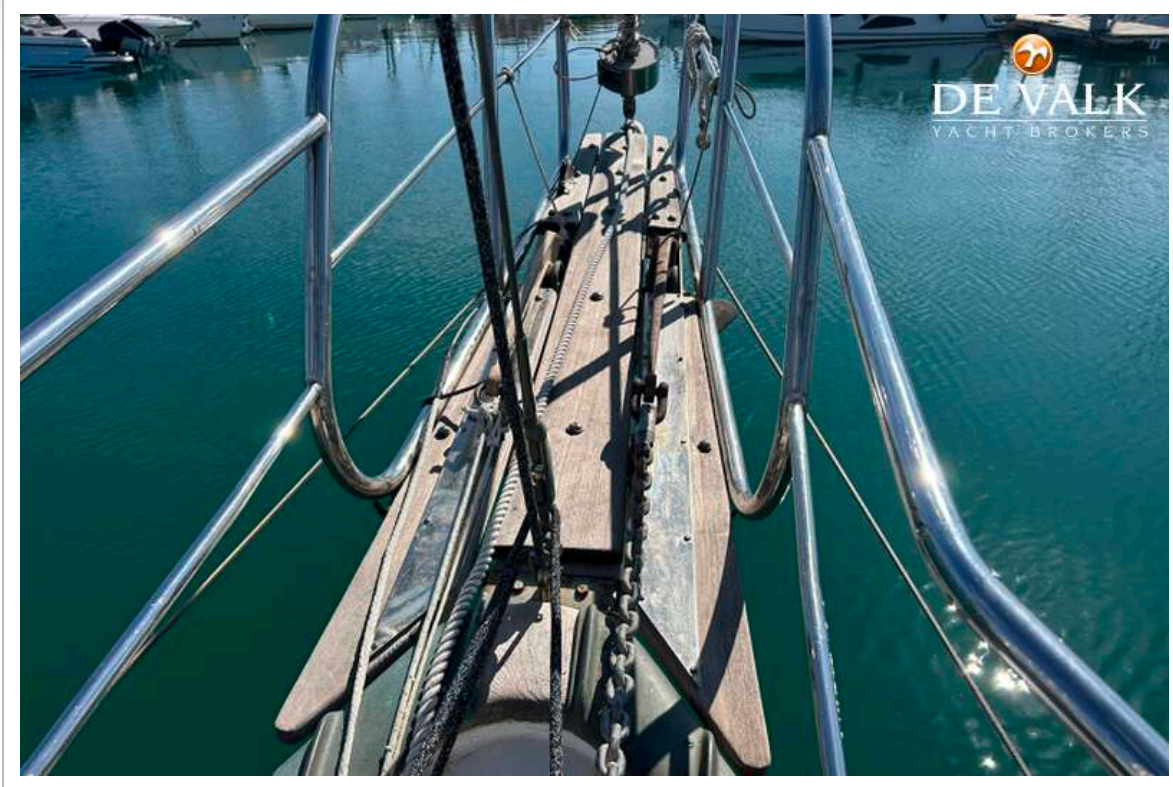
# HANS CHRISTIAN 43



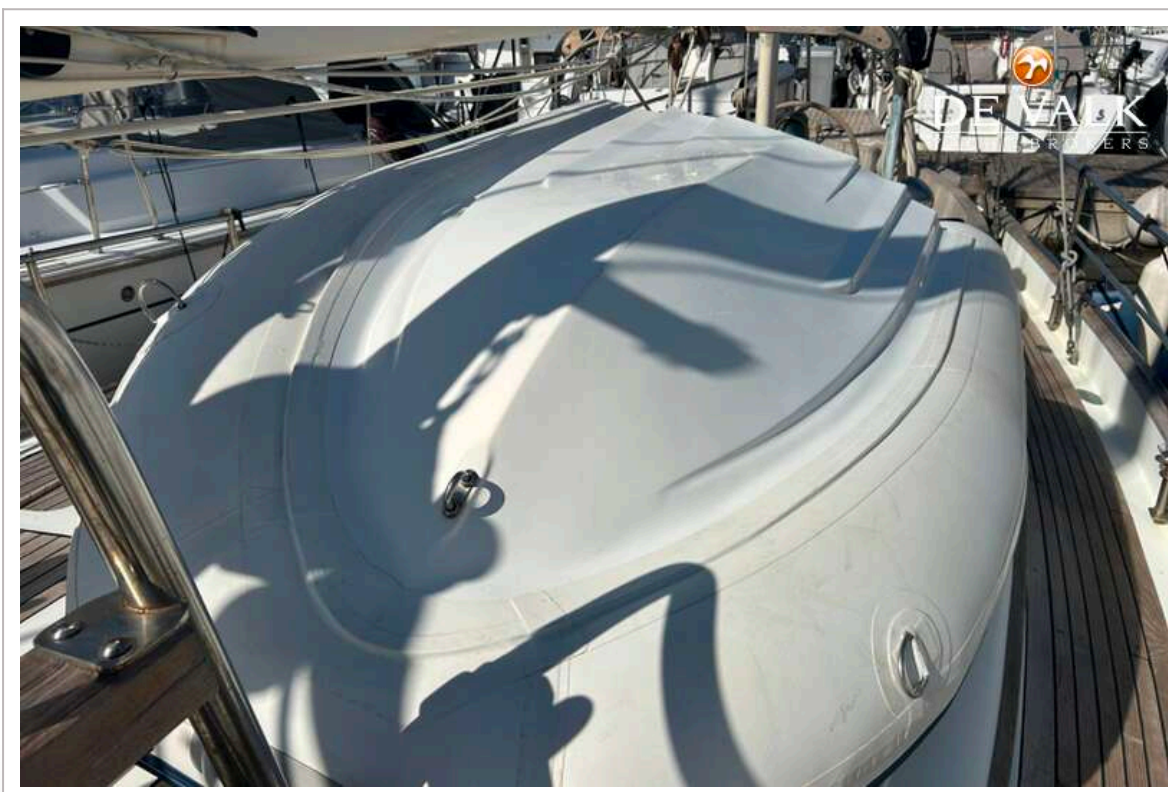
# HANS CHRISTIAN 43



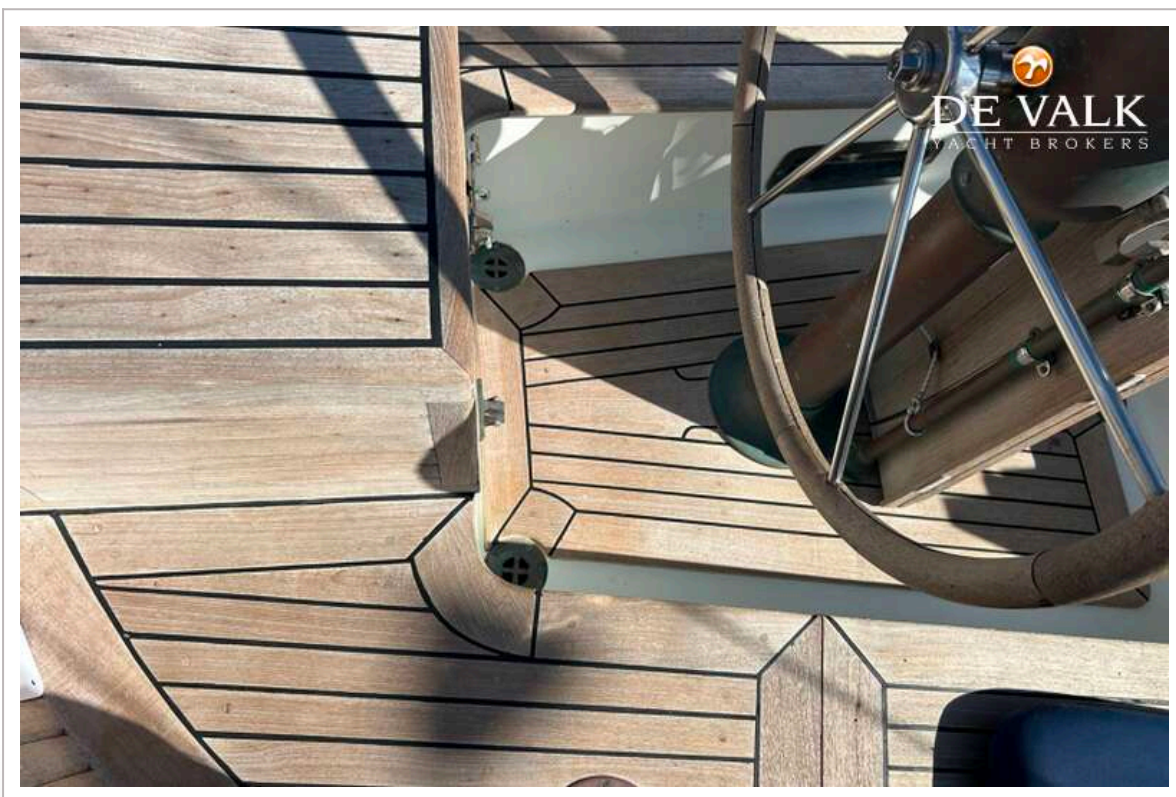
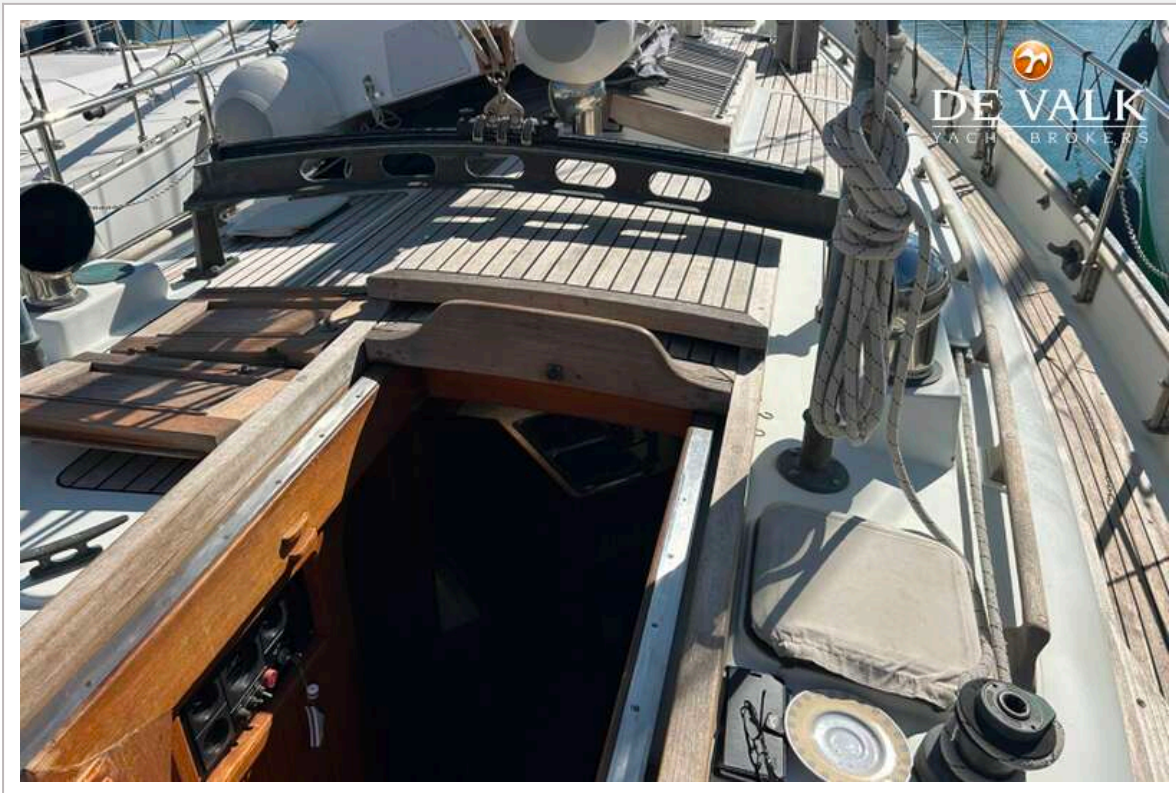
# HANS CHRISTIAN 43



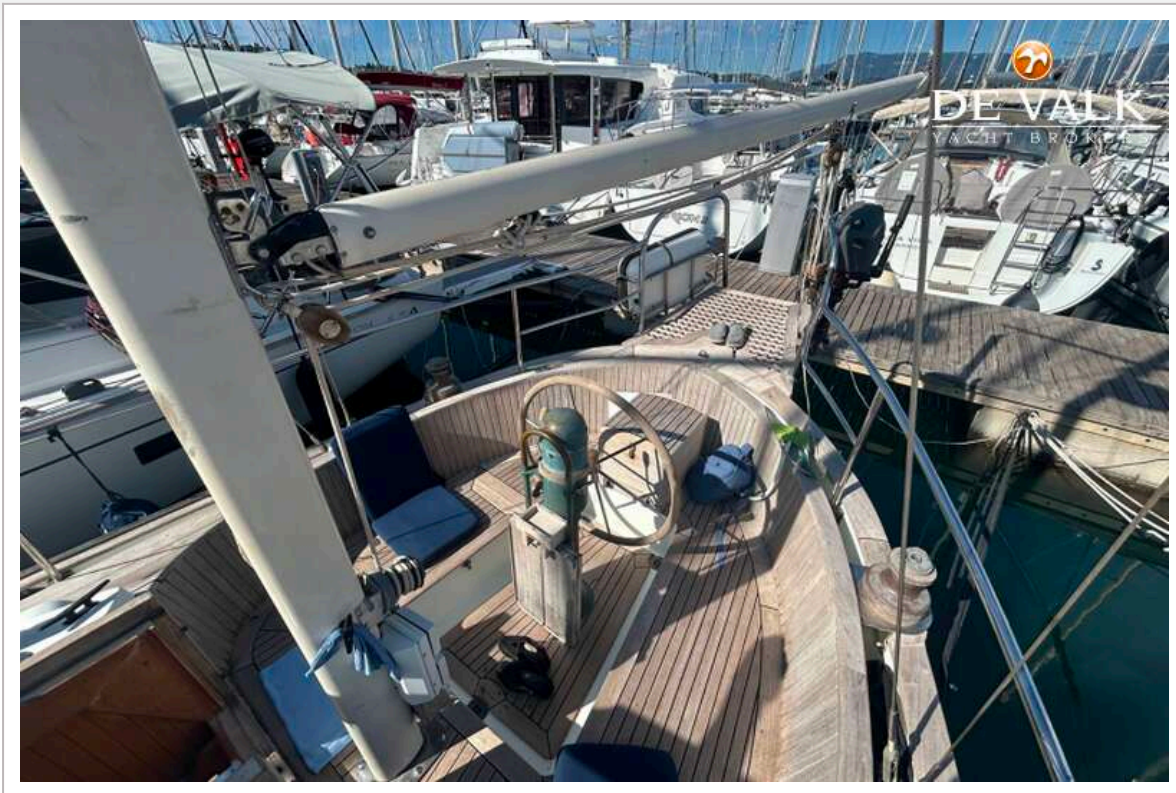
# HANS CHRISTIAN 43



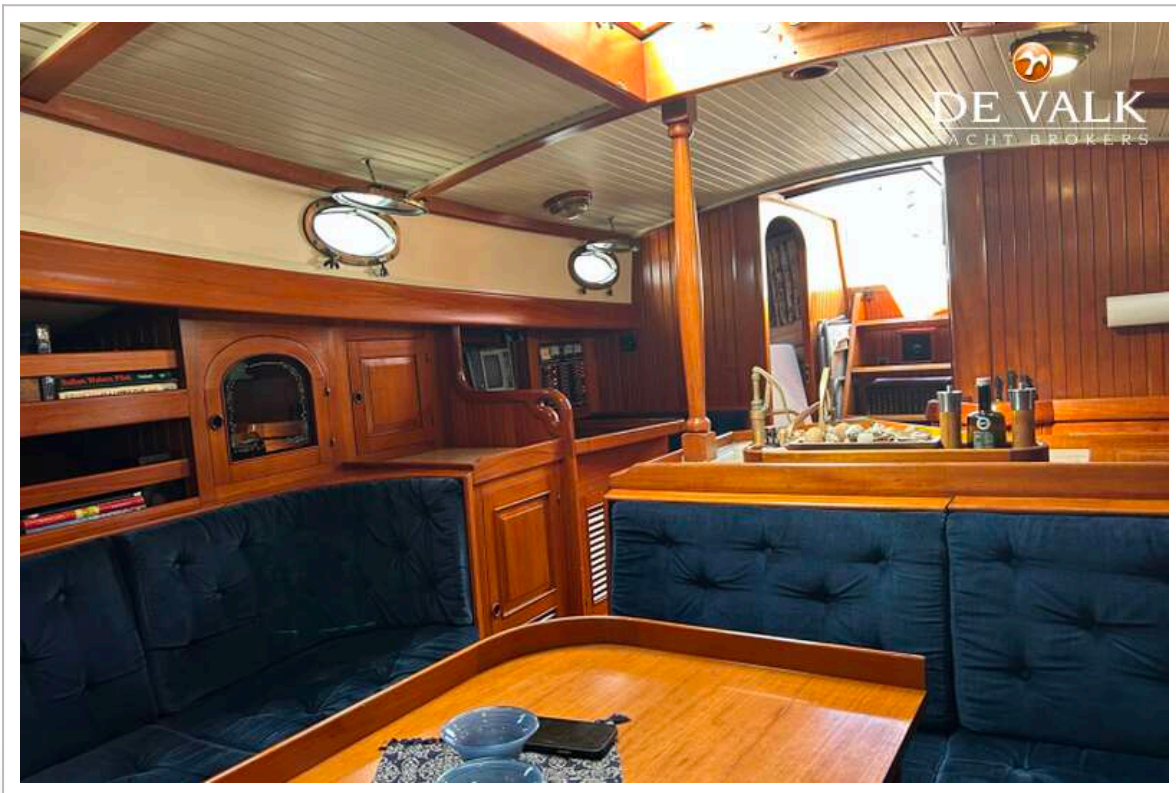
# HANS CHRISTIAN 43



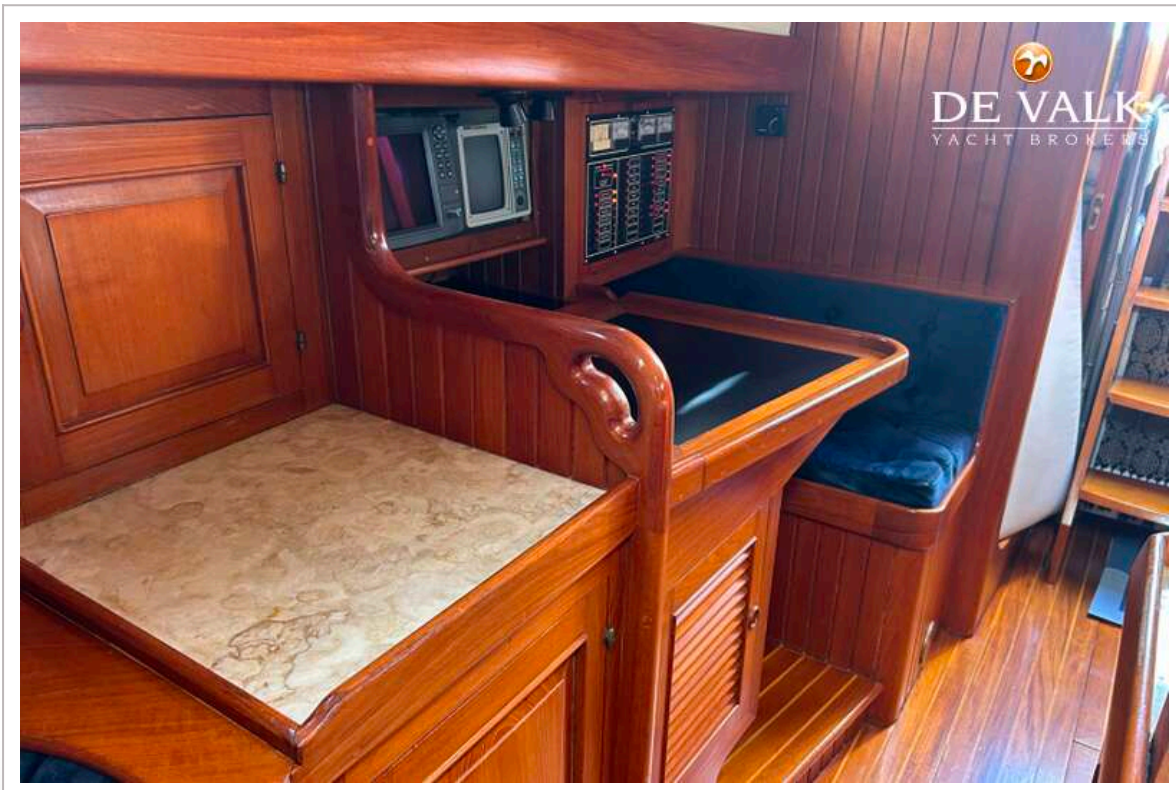
# HANS CHRISTIAN 43



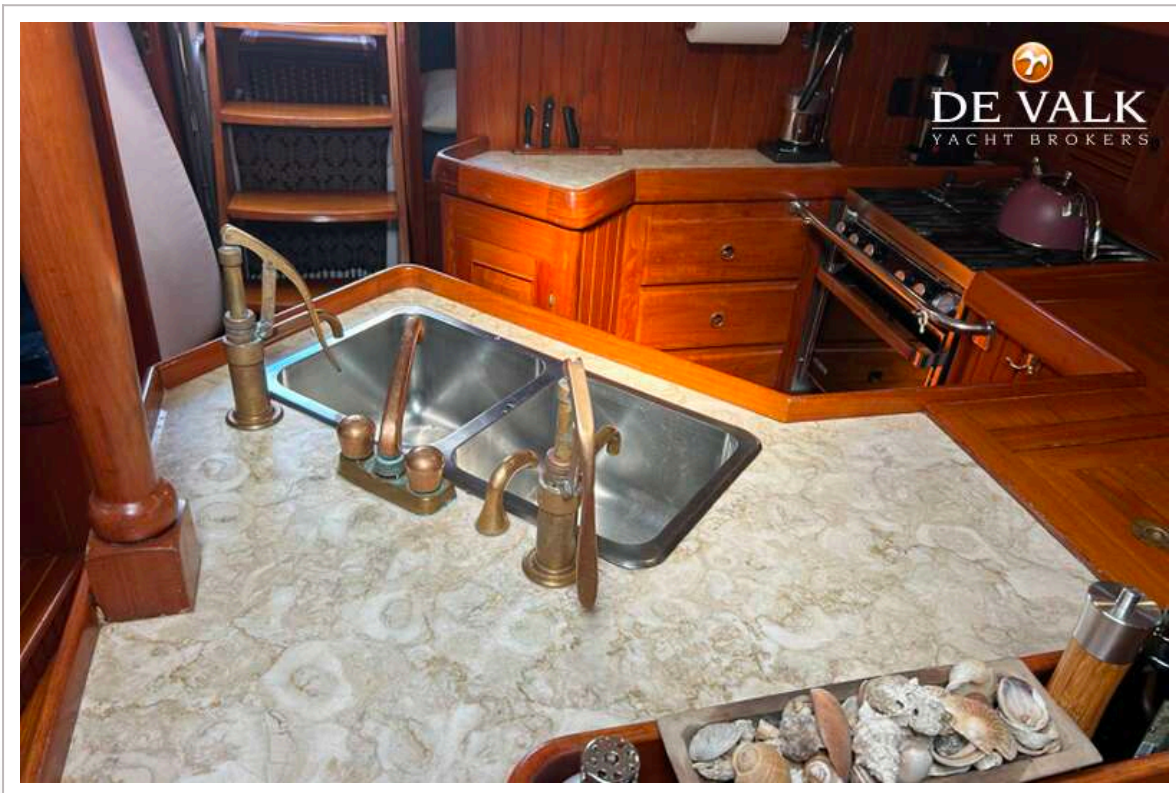
# HANS CHRISTIAN 43



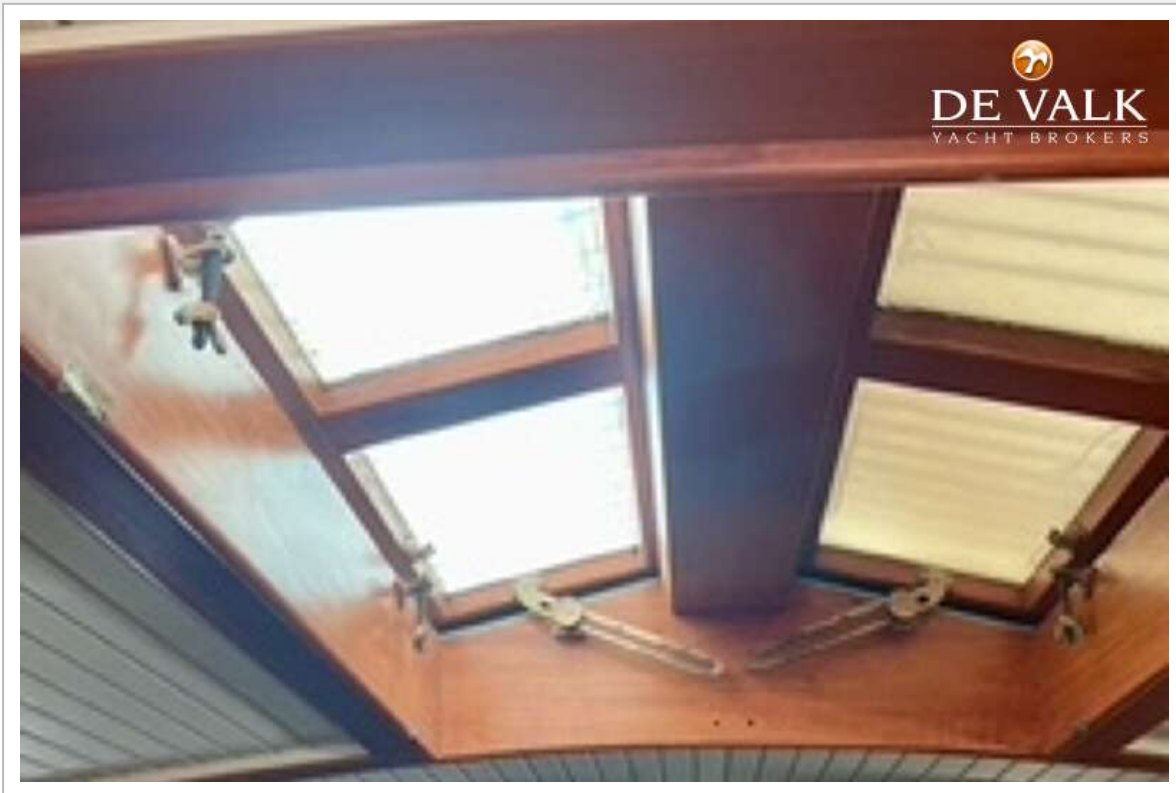
# HANS CHRISTIAN 43



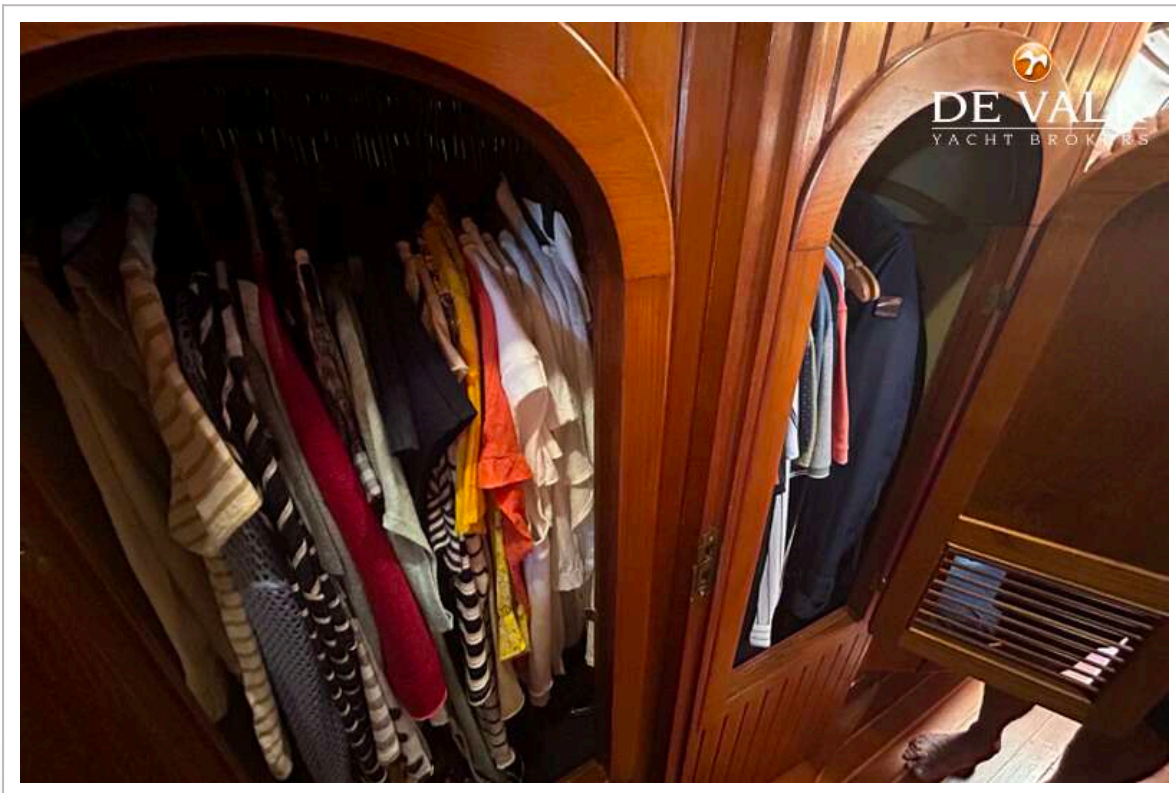
# HANS CHRISTIAN 43



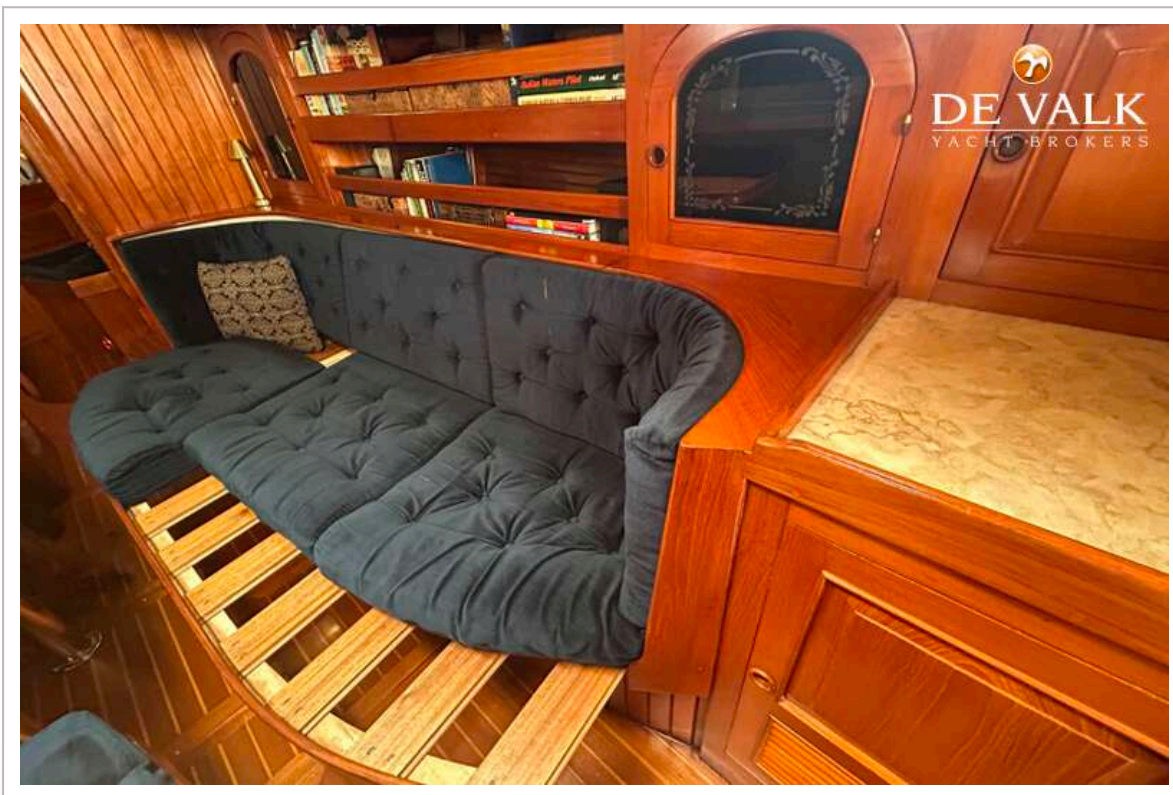
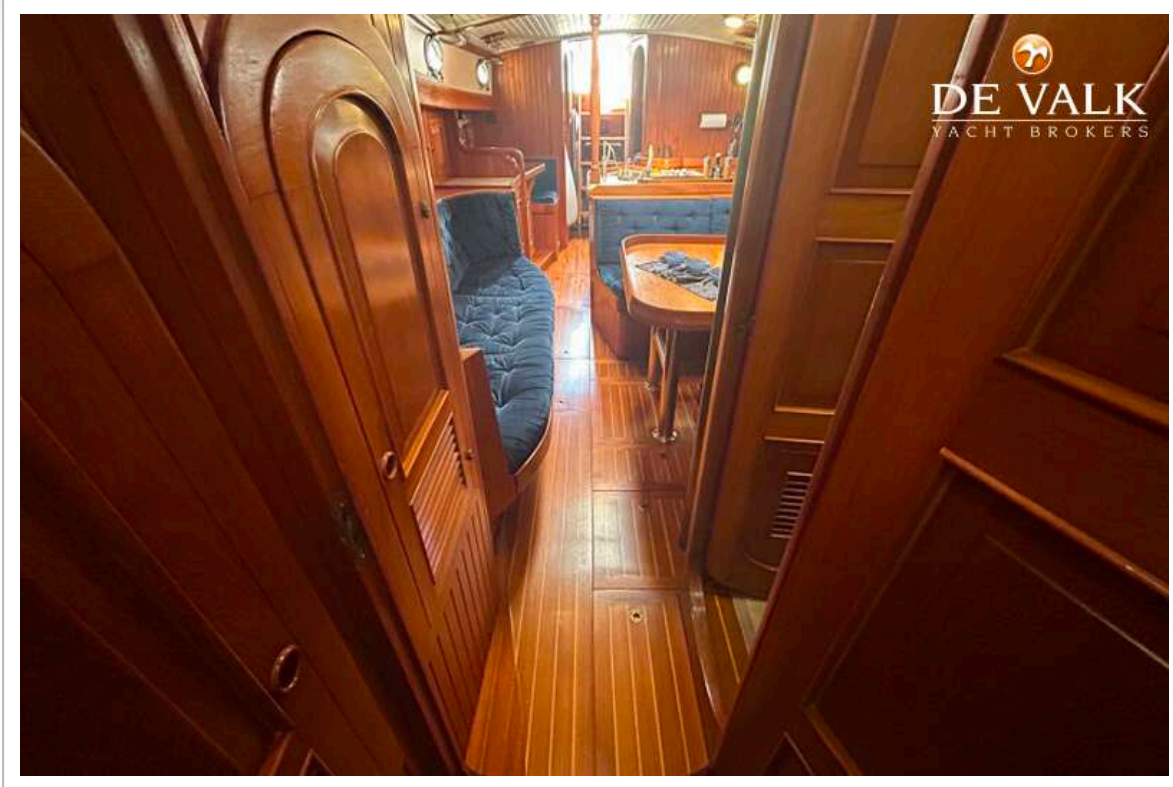
# HANS CHRISTIAN 43



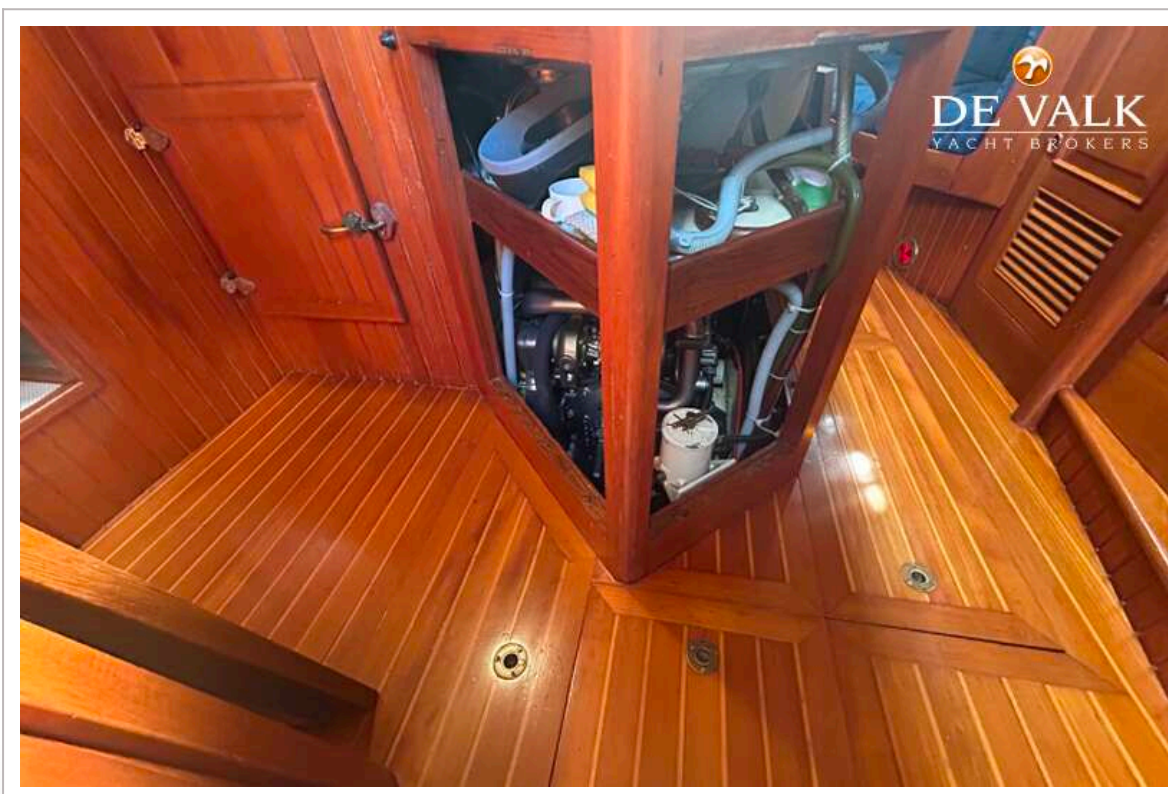
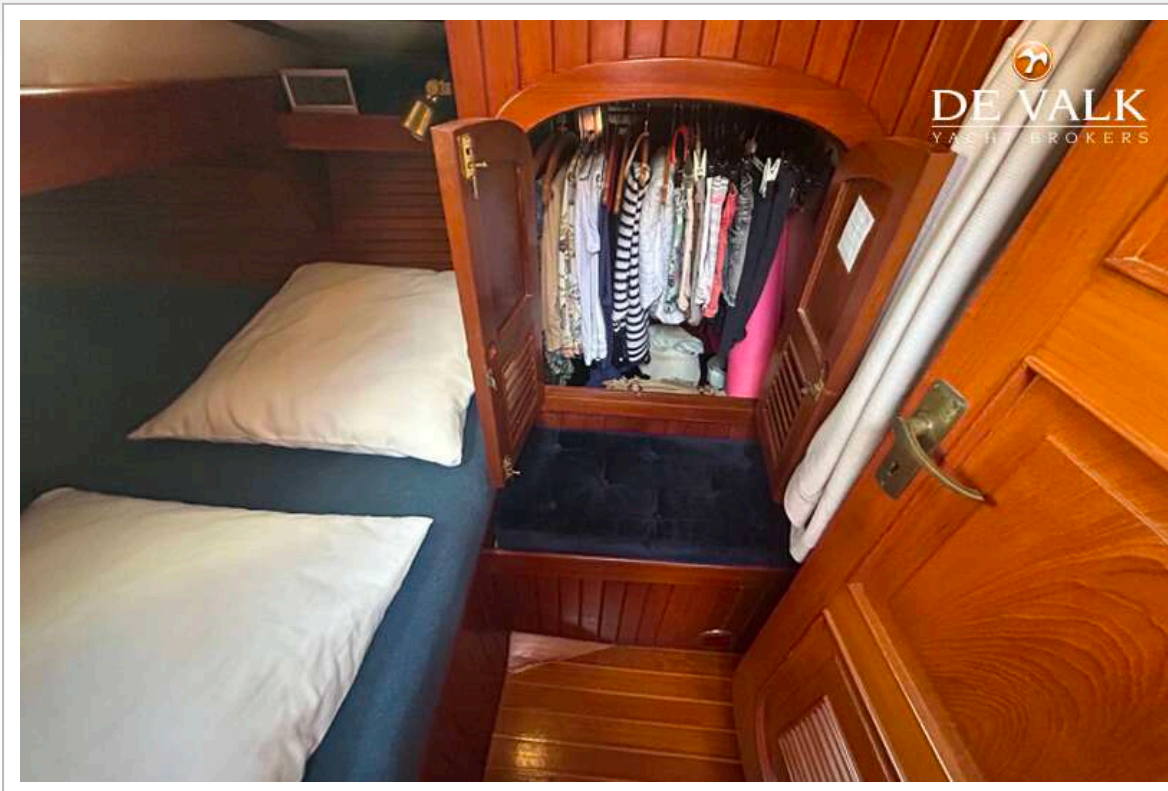
# HANS CHRISTIAN 43



# HANS CHRISTIAN 43



# HANS CHRISTIAN 43



# HANS CHRISTIAN 43



# HANS CHRISTIAN 43

