



DE VALK
YACHT BROKERS



GREENLINE 33



DE VALK
YACHT BROKERS

BROKER'S COMMENTS

This Greenline 33 offers a practical two-cabin layout and is powered by a reliable 170 hp diesel engine. With bow and stern thrusters, new navigation instruments, and heating, she is well-equipped for comfortable cruising economical, safe, and with ample power when needed. The spacious cockpit is easily accessible and features a fold-out bathing platform, seamlessly connected to the saloon. Inside, you'll enjoy a bright interior with plenty of natural light, a smart foldable dinette and versatile helm seat. Up to date maintenance and ready to go. Please contact us for an appointment.

Joris van de Rijt

SPECIFICATIONS

Dimensions	9.99 x 3.49 x 0.70 (m)	Builder	Seaway Group, Bled
Built	2018	Cabins	2
Material	GRP	Berths	5
Engine(s)	1 x Volvo Penta D3-170 diesel	Hp/Kw	170.00 (hp), 125.12 (kw)
Asking price	sold (VAT)	Lying	at sales office

CONTACT

Sales office	De Valk Sint Annaland B.V.	Telephone	+31 (0)166 601 000
Address	Koelhuisweg 4 4697 RM Sint Annaland NL	E-mail	sintannaland@devalk.nl

DISCLAIMER

These particulars are given in good faith as supplied but cannot be guaranteed.



GENERAL

Model	GREENLINE 33
Type	motor yacht
LOA (m)	9,99
Beam (m)	3,49
Draft (m)	0,70
Air draft (m)	3,10
Headroom (m)	2,00
Year built	2018
Builder	Seaway Group, Bled
Country	Slovenia
Designer	J&J Design
Displacement (t)	4,8
CE norm	B
Hull material	GRP
Hull colour	white
Hull shape	deep-V
Superstructure material	GRP
Rubbing strake	stainless steel
Deck material	GRP
Deck finish	non-skid moulded in + synthetic teak on side-decks
Superstructure deck finish	non-skid moulded in
Cockpit deck finish	synthetic teak
Antifouling (year)	+ anodes 2025
Window material	tempered glass With covers
Deckhatch	yes
Portholes	yes
Mast can be lowered	manual
Fuel tank (litre)	polyethylene 2 x 250 (cleaned in 2023)
Level indicator (fuel tank)	yes
Freshwater tank (litre)	polyethylene 2 x 150



Level indicator (freshwater)	yes
Blackwater tank (litre)	polyethylene 1 x 60
Blackwater tank extraction	deck extraction + uw line
Wheel steering	hydraulic
Inside helm position	yes
Emergency tiller	yes
Extra info	After cleaning fuel tanks only GTL diesel is used

ACCOMMODATION

Cabins	2
Berths	5
Interior	cherry
Floor	woodprint
Open cockpit	yes
Aft deck	yes
Pilot house/deck saloon	yes
Headroom saloon (m)	2,00
Heating	diesel ducted hot air Eberspacher
Dinette to convert into berth	In saloon with cushion
Sliding door to cockpit	+ fold open galley-window
Galley	yes
Sink	stainless steel
Cooker	induction Can 2 burner (2024)
Microwave/oven combi	Gorenje
Fridge	AEG with freezer (2021)
Hot water system	220V + engine
Water pressure system	electrical
Owners cabin	double bed Can be converted into 2 separate beds
Bed length (m)	2,10
Wardrobe	hanging and shelves
Bathroom	en suite



Toilet	en suite
Toilet system	electric Jabsco
Wash basin	in the bathroom
Shower	en suite
Guest cabin 1	bunk bed
Extra info	Helm seat can be folded, see pictures

MACHINERY

No of engines	1
Make	Volvo Penta
Type	D3-170
HP	170
kW	125.12
Fuel	diesel
Year installed	2018
Engine hours	714
Engine cooling system	freshwater heat exchanger
Drive	shaft
Engine controls	electrical Volvo Penta with remote control
Gearbox	hydraulic
Bowthruster	electric Side Power
Sternthruster	electric Side Power
Thrust bearing	Aquadrive
Propeller type	fixed
Propeller shaft material	stainless steel
Shaft lubrication	water
Manual bilge pump	yes
Electric bilge pump	yes
Electrical installation	12V/ 220V
Start battery	1 x (2021)
Service battery	2 x 120 Ah (2022)



Bowthruster battery	1 x 100 Ah (2021)
Sternthruster battery	1 x 100 Ah (2021)
Battery monitor	Simrine on helmposition
Battery charger	Victron 12/60
Inverter	Victron 1600 W
Solar panel	On roof
Shorepower	with cable
Trimtabs	Volvo Penta
Extra info	Yacht Controller remote for engine, thrusters and Windlass
Extra info	Engine service 2025

NAVIGATION

Compass	Plastimo
Depth sounder	Raymarine (2021)
Windset	Raymarine (2021)
VHF	Raymarine
Autopilot	Raymarine (2024)
Rudder angle indicator	Raymarine (2024)
Radar	Raymarine (2024)
Radar/GPS/plotter	Raymarine (2024)
Electronic chart(s)	yes
AIS transponder	Raymarine (2021)
Navigation lights	yes

EQUIPMENT

Cockpit cover	yes
Bathing platform	Big folding platform
Boarding ladder	stainless steel
Bow ladder	With small teak platform for easy access
Deck shower	Hot + cold
Anchor	Pool Stainless steel



Anchor chain	yes
Windlass	electrical
Sea railing	stainless steel
Railing side opening gates	Starboard side in cockpit
Wiper	2 x
Horn	yes
Fenders	yes
Mooring lines	yes
TV	Philips
Radio	Fusion MS-AV755
Cockpit speakers	yes
Speakers in salon	yes
Fire extinguisher	yes



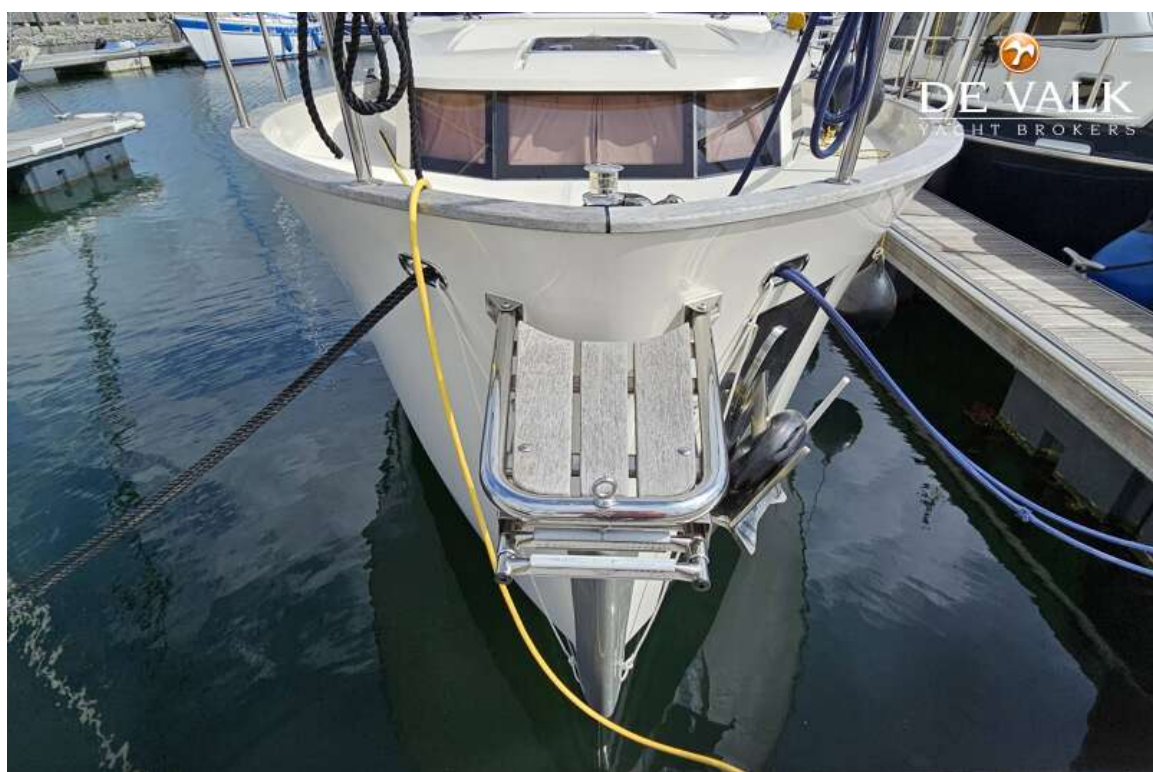
GREENLINE 33



GREENLINE 33



GREENLINE 33



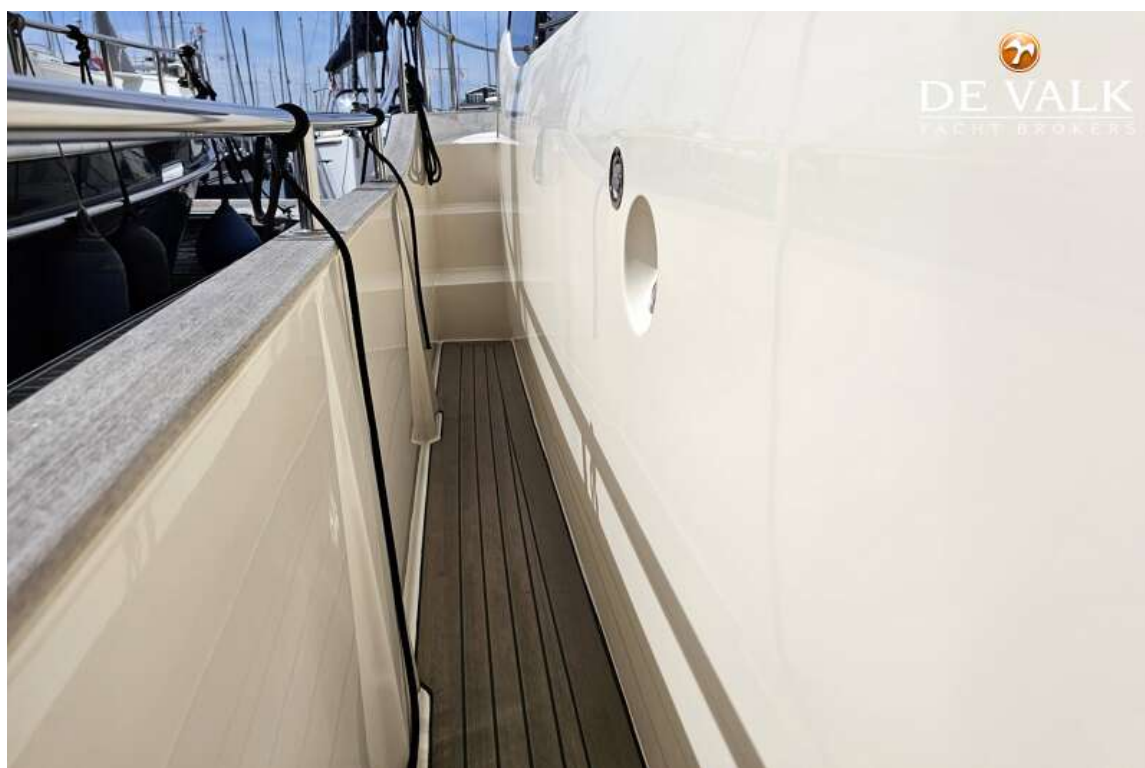


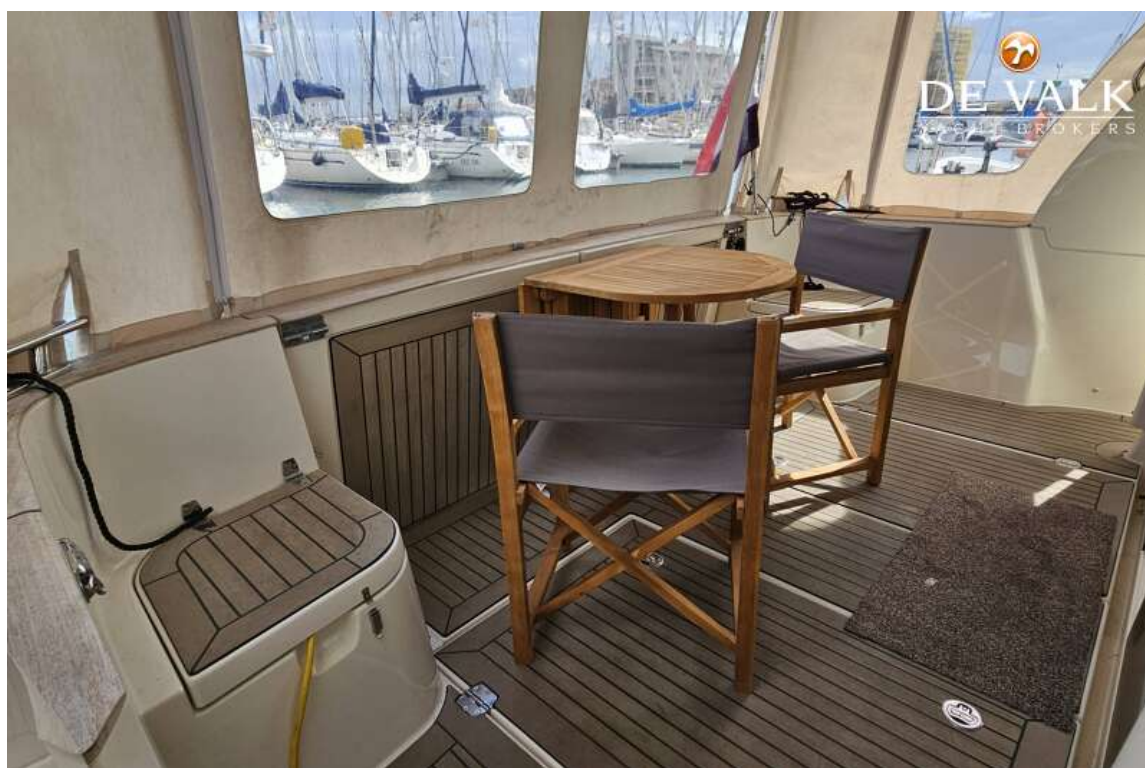


GREENLINE 33



GREENLINE 33

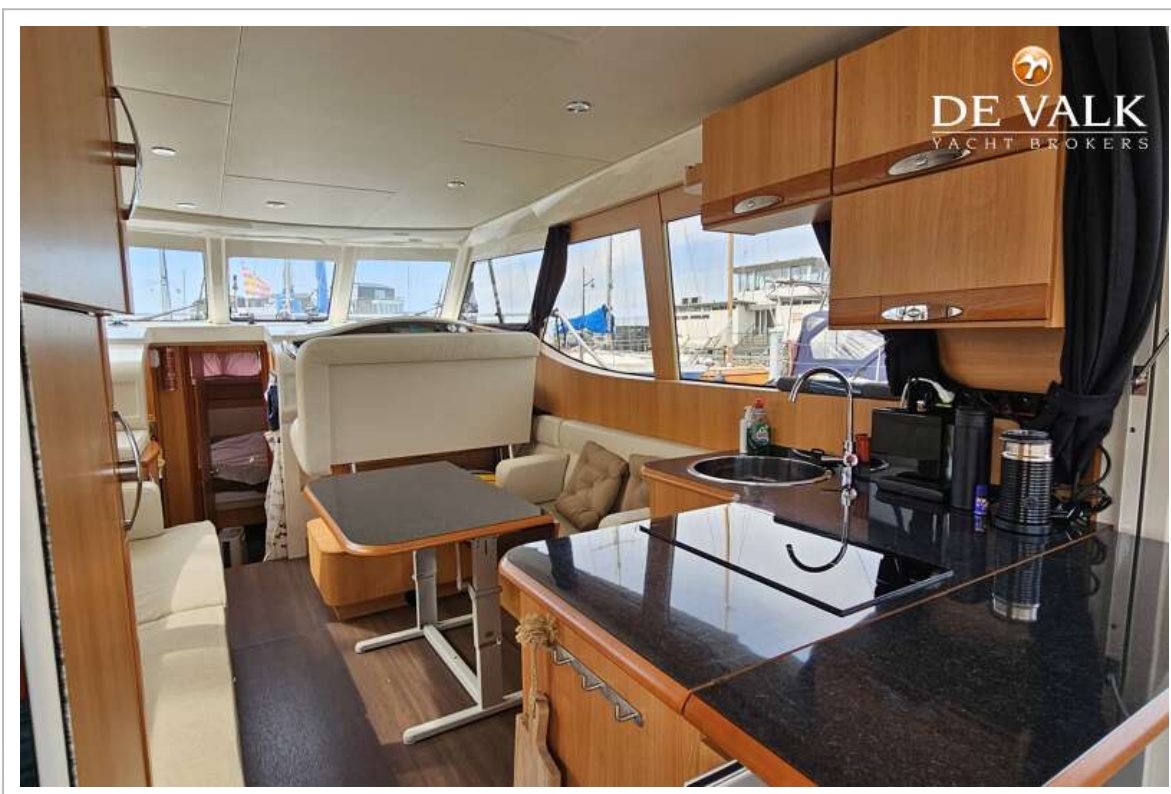
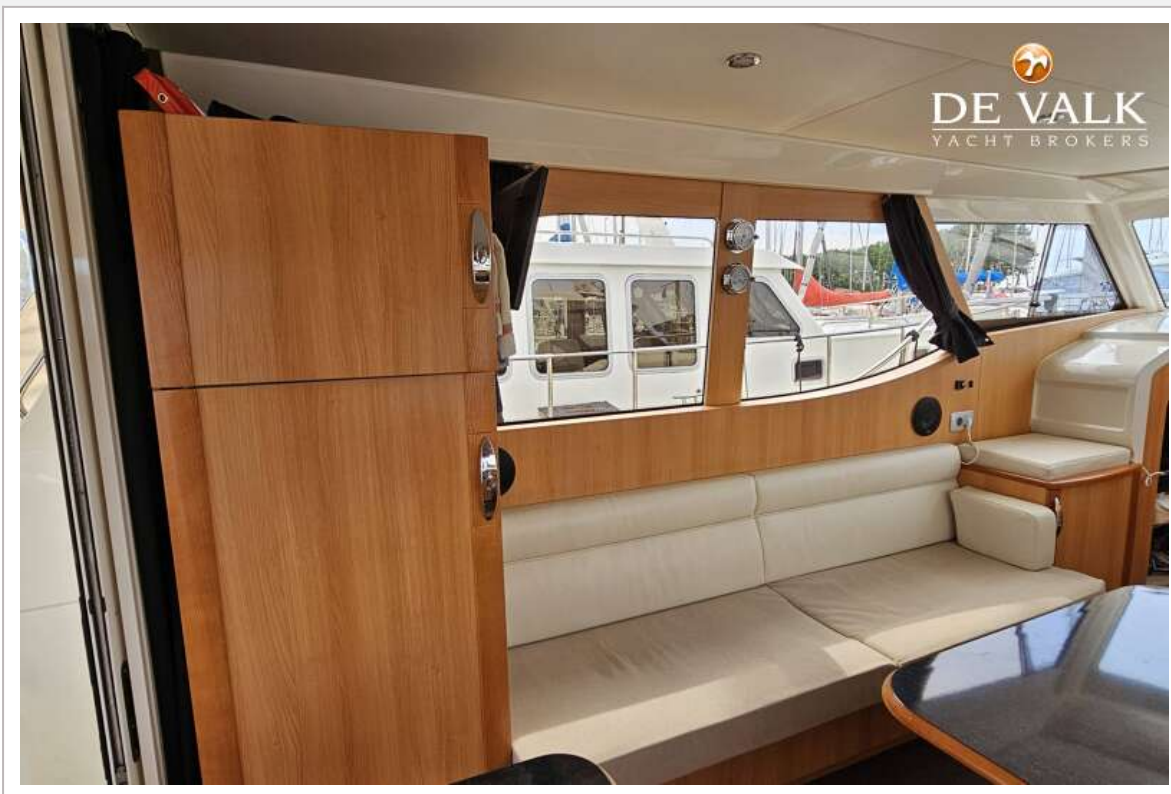




GREENLINE 33



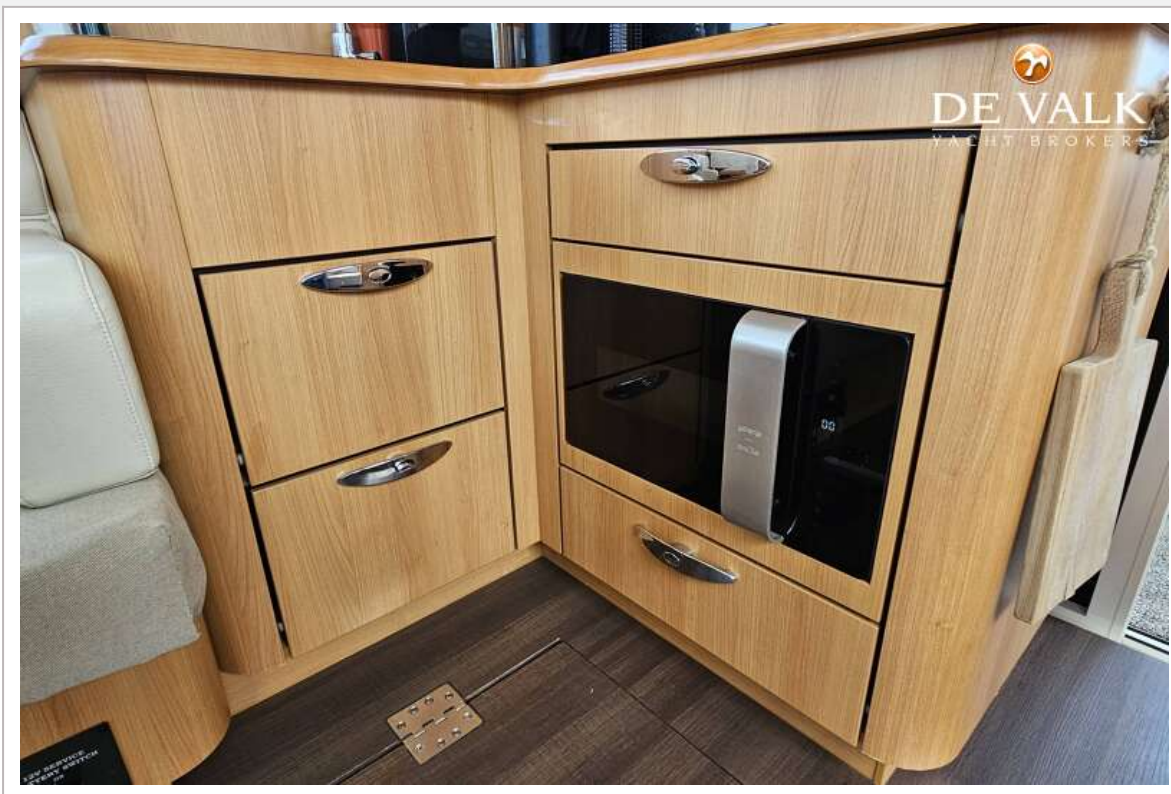




GREENLINE 33



GREENLINE 33



GREENLINE 33



GREENLINE 33



GREENLINE 33

