



RODMAN 38



BROKER'S COMMENTS

Introducing the Rodman 38 IPS Fly, your gateway to luxury on the water. This pristine, CE-B certified boat combines modern design with top-tier performance, powered by twin Volvo-Penta D6 310 HP engines that propel you to 30 knots. With 2 cabins and 4 berths, it's perfect for extended stays. Enjoy both indoor and outdoor living with ample space, plus a 4 KVA generator to ensure comfort no matter where you are. Meticulously maintained and ready for adventure, make the Rodman 38 IPS Fly yours today! Her berth in Medemblik/NL is also for sale! Ask us for more info

Peter Spruyt

SPECIFICATIONS

Dimensions	11.80 x 3.91 x 1,10 / 0.00 (m)	Builder	Rodman Yachts
Built	2005	Cabins	2
Material	GRP	Berths	4
Engine(s)	2 x Volvo-Penta D6-400/IPS diesel	Hp/Kw	2 x 310.00 (hp), 228.16 (kw)
Asking price	sold (VAT)	Lying	at sales office

CONTACT

Sales office	De Valk Sneek	Telephone	+31 (0)515 42 80 30
Address	Zwolsmanweg 7 8606 KC Sneek NL	E-mail	sneek@devalk.nl

DISCLAIMER

These particulars are given in good faith as supplied but cannot be guaranteed.



GENERAL

Model	RODMAN 38
Type	motor yacht
LOA (m)	11,80
Beam (m)	3,91
Draft min (m)	1,10
Air draft (m)	3,85
Air draft min (m)	4,75
Headroom (m)	1,95
Year built	2005
Builder	Rodman Yachts
Country	Spain
Displacement (t)	11
CE norm	B
Hull material	GRP
Hull colour	white
Hull shape	deep-V
Keel type	yes
Superstructure material	GRP
Rubbing strake	stainless steel
Deck material	GRP
Deck finish	GRP/ Teak
Superstructure deck finish	GRP/ Teak
Cockpit deck finish	teak
Antifouling (year)	2025
Window frame	Glued
Window material	glass
Deckhatch	yes
Portholes	Glued Glass
Flybridge	yes
Flybridge cover	yes



Flybridge suncover	yes
Mast can be lowered	yes
Fuel tank (litre)	stainless steel 1000 Ltr
Level indicator (fuel tank)	Wema
Freshwater tank (litre)	aluminium 400 Ltr
Level indicator (freshwater)	Wema
Blackwater tank (litre)	polyethylene 100 Ltr
Level indicator (blackwater)	Wema
Wheel steering	hydraulic
Inside helm position	yes
Flybridge helm position	yes

ACCOMMODATION

Cabins	2
Berths	4
Interior	Alcantara
Floor	teak and holly
Open cockpit	yes
Saloon	yes
Headroom saloon (m)	2,15 Mtr
Heating	diesel ducted hot air Webasto
Sliding door to cockpit	yes
Galley	yes
Countertop	corian
Sink	stainless steel
Cooker	electric 2 Burner
Microwave	Samsung
Fridge	Indesit
Freezer	yes
Hot water system	220V + engine Quick 40 Ltr
Water pressure system	electrical



Crockery	yes
Owners cabin	French bed
Bed length (m)	1,90 Mtr
Wardrobe	hanging and shelves
Toilet	en suite
Toilet system	electric
Wash basin	in the bathroom
Shower	en suite
Guest cabin 1	twin single
Bed length (m)	2 x 1,90 x 0,70 Mtr.
Wardrobe	hanging and shelves
Bathroom	shared
Toilet	shared
Toilet system	electric
Wash basin	in the bathroom
Shower	shared

MACHINERY

No of engines	2
Make	Volvo-Penta
Type	D6-400/IPS
HP	310
kW	228.16
Fuel	diesel
Year installed	2005
Engine hours	998,962
Engine cooling system	freshwater heat exchanger
Drive	IPS
Engine controls	electrical Volvo Penta (replacement 2025)
Gearbox	hydraulic
Bowthruster	electric Max Power



Sternthruster	Max Power
Propeller type	fixed
Propeller blades	yes
Propeller shaft material	stainless steel
Shaft lubrication	water
Electric bilge pump	yes
Electrical installation	12/ 220 Volt
Generator	wet exhaust Paguro 4000
Batteries	yes
Start battery	yes
Service battery	2 x (2025)
Battery monitor	yes
Battery charger	Mastervolt Mass 12/60
Shorepower	with cable
Trimtabs	Lenco
Extra info	2 x Engine service 2024
Extra info	Total overhaul IPS system 2024

NAVIGATION

Compass	Liquid Compass Plastimo
Depth sounder	(Plotter)
Log	(Plotter)
Fish finder	(Plotter)
VHF	Shipmate RS 8400
VHF handheld	Cobra HH 350
Rudder angle indicator	Volvo Penta
Plotter	Raymarine Axion 12
Navigation lights	yes

EQUIPMENT

Cockpit cover	(2022)
----------------------	--------



Cockpit cushions	yes
Cockpit table	yes
Cockpit chairs	yes
Bathing platform	yes
Boarding ladder	stainless steel
Transom door	yes
Deck shower	yes
Anchor	CQR Plough
Anchor chain	yes
Windlass	electrical Lofrance
Sea railing	stainless steel
Grab rail (superstructure)	stainless steel
Life raft	4 Persons
Last life raft survey	Next Inspection 03-2024
Wiper	2 x
Horn	electric
Fenders	yes
Mooring lines	yes
TV	OK
TV receiver	yes
Radio-cd player	Pioneer
Speakers in salon	2 x
Fire extinguisher	yes
Extra info	Mosquito screens
Extra info	Sunbathing Cushions





RODMAN 38



RODMAN 38



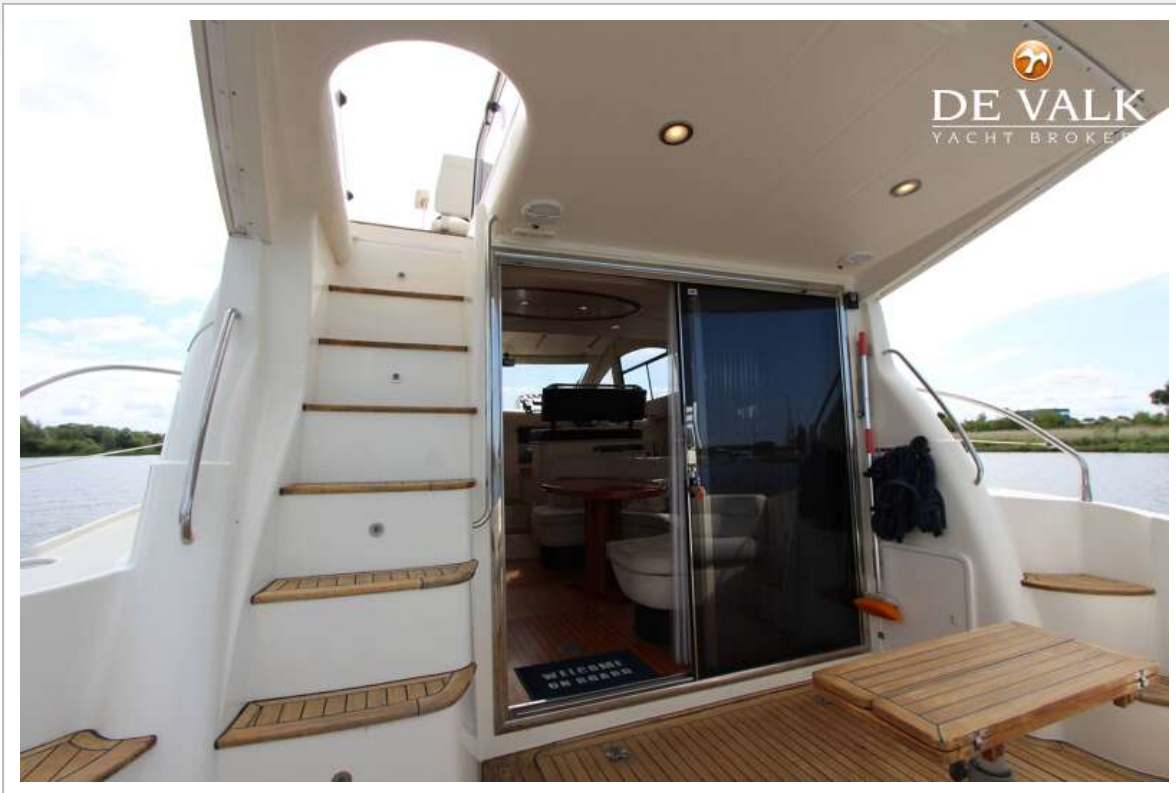
RODMAN 38



RODMAN 38



RODMAN 38



RODMAN 38



RODMAN 38



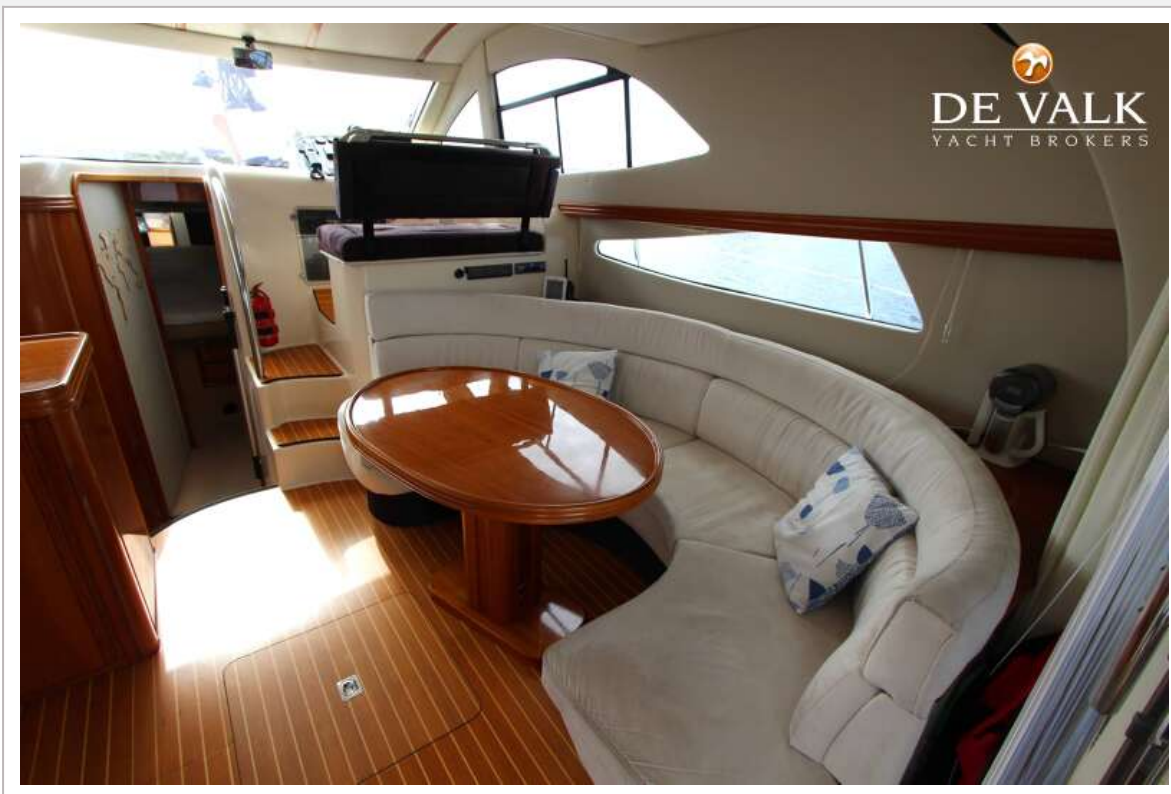
RODMAN 38



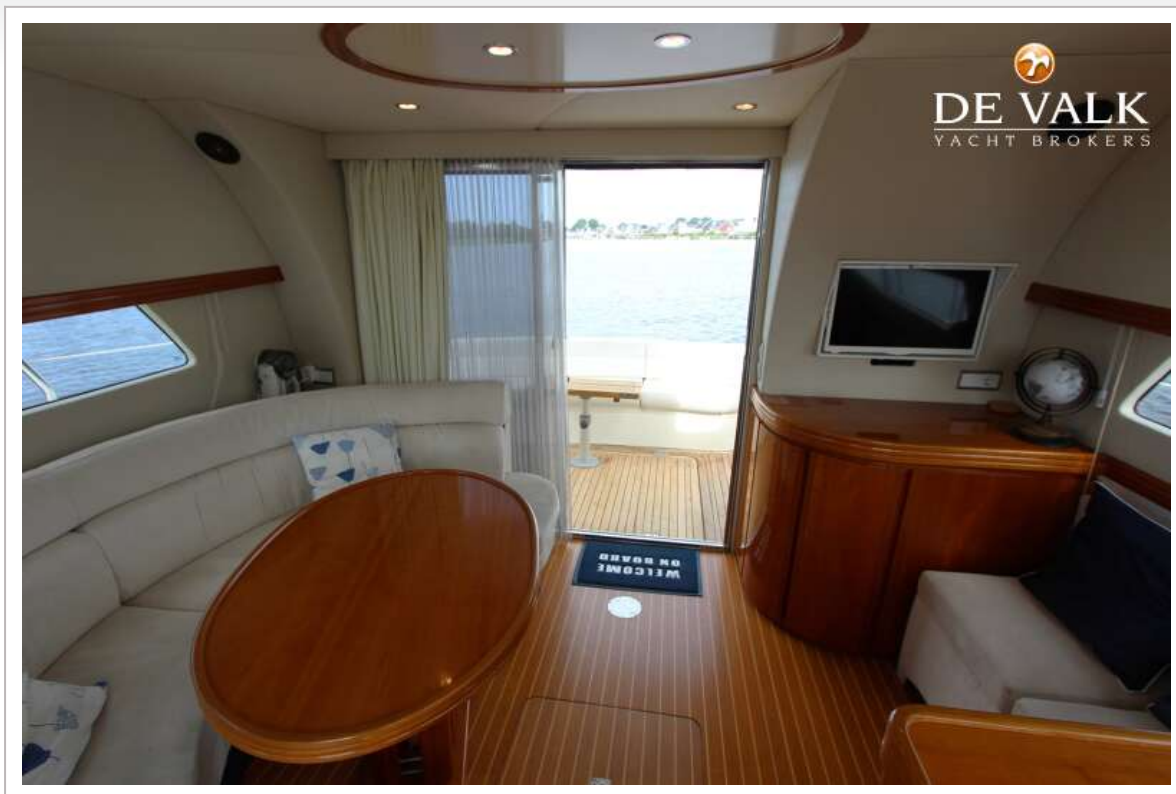
RODMAN 38



RODMAN 38



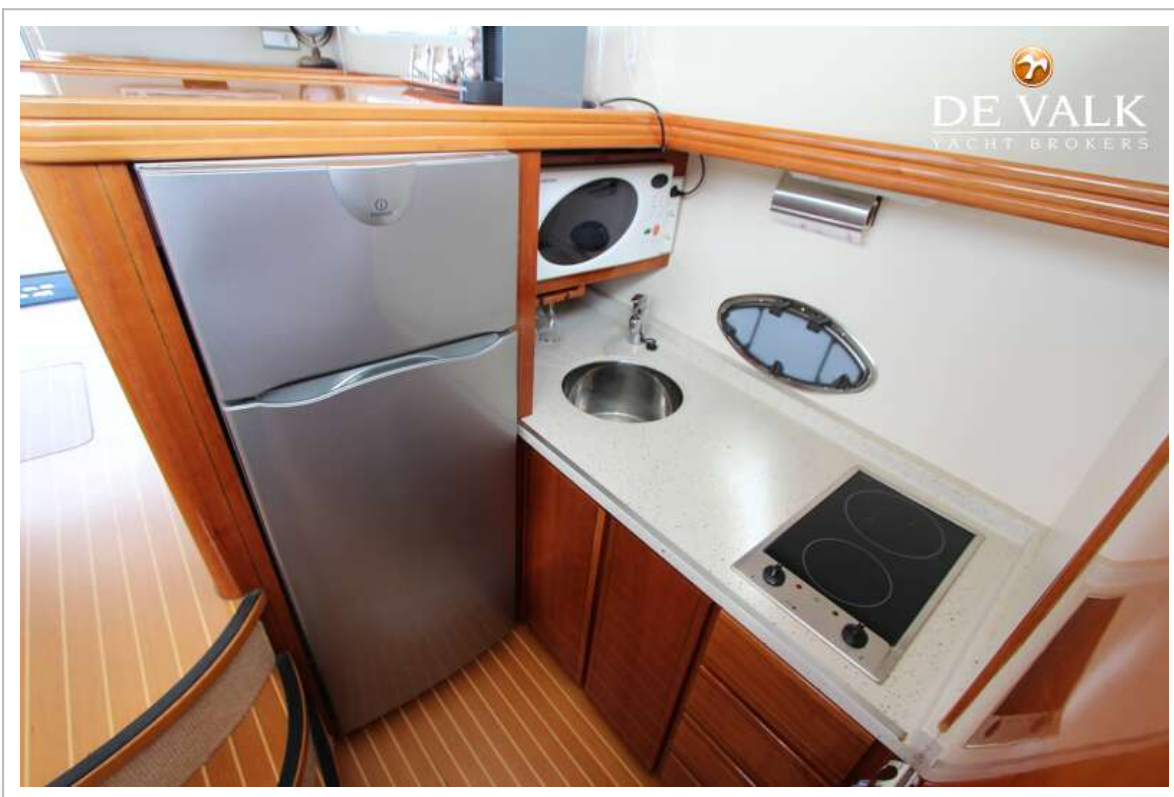
RODMAN 38



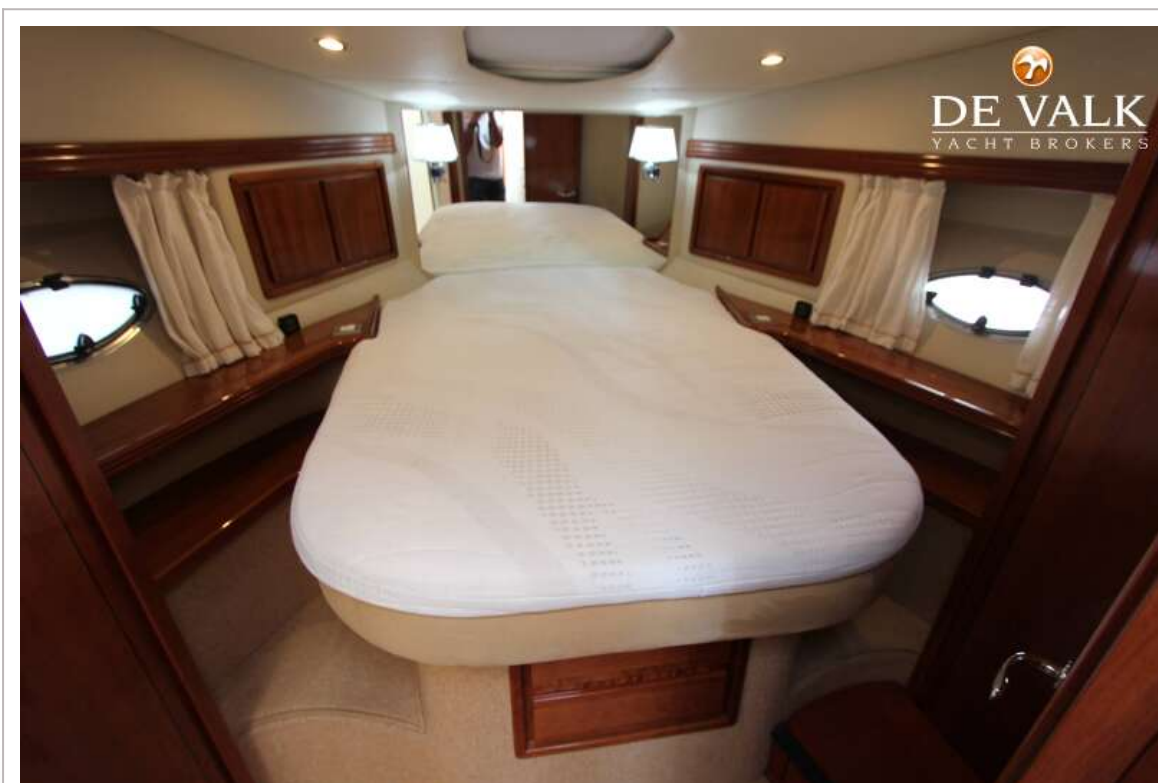
RODMAN 38

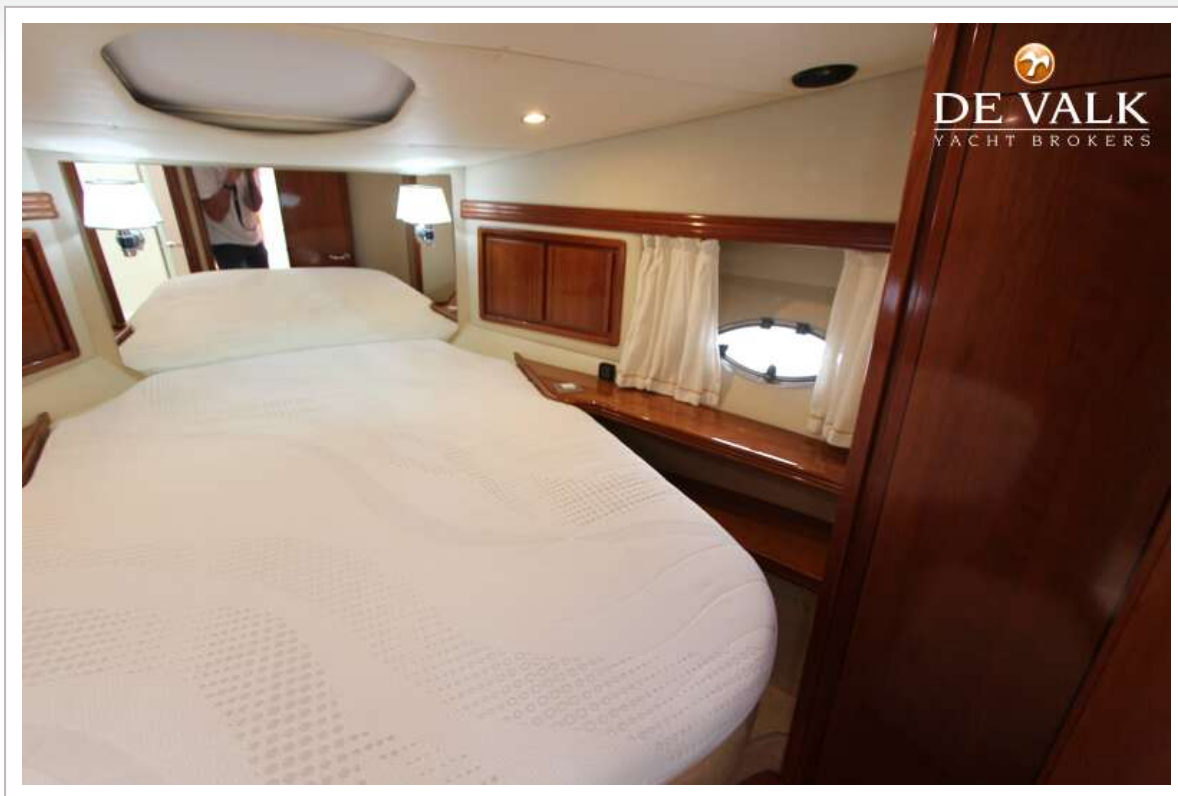


RODMAN 38

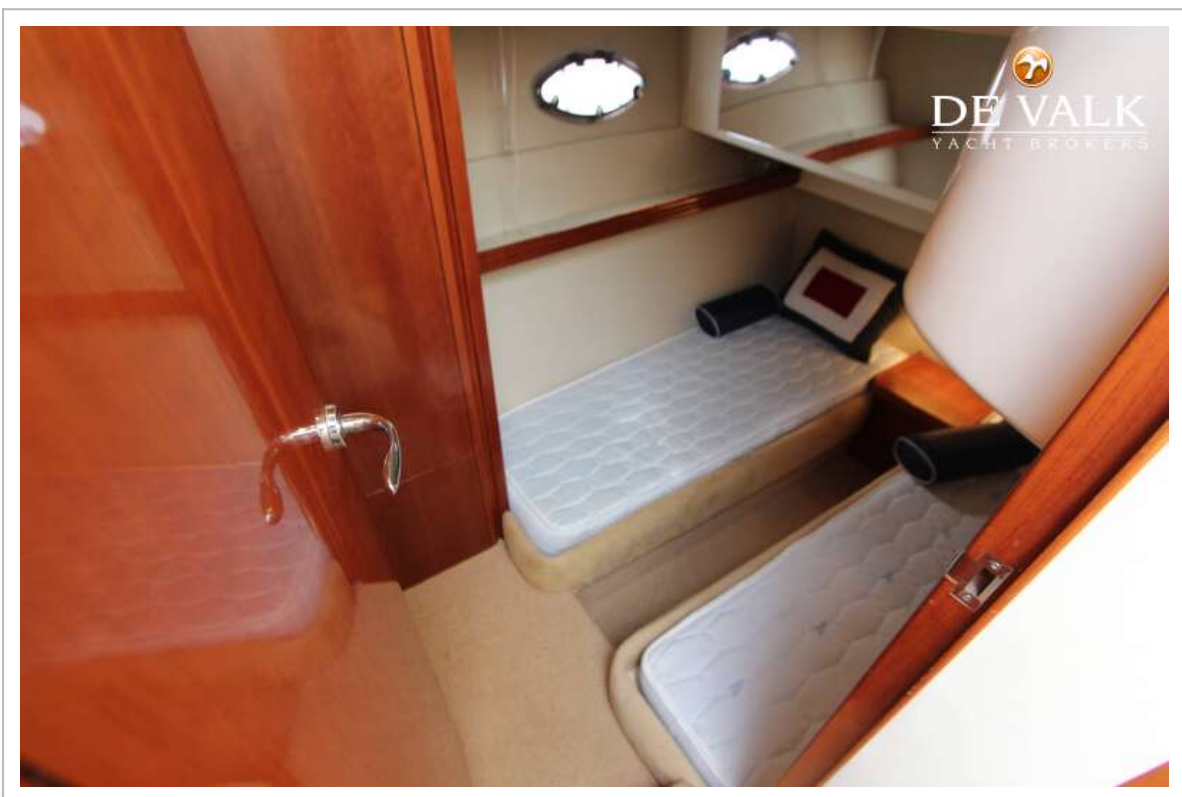


RODMAN 38





RODMAN 38



RODMAN 38

