



DE VALK
YACHT-BROKERS



CONCORD 47.5



DE VALK
YACHT BROKERS

BROKER'S COMMENTS

Concord 47.5 DS "Northern Light" built in 1999 and launched in 2000 by Alumarine B.V. in The Netherlands. Designed by Dick Koopmans and B. Busman. This aluminium deck saloon sailing yacht is bought by her current owner in 2018 and he directly brought her to De Gier Maritiem for a large refit 2018-2019. (new engine, generator, navigation equipment, new paint, sails, rigging etc) After completing the refit the owner did a lot of long range blue water cruising. Now "Northern Light" is for sale, ready to go on new adventures, currently located in Panama.

Reinier van der Wolf

SPECIFICATIONS

Dimensions	14.45 x 4.36 x 2.15 (m)	Builder	Alumarine B.V., Sint Annaland
Built	1999	Cabins	2
Material	Aluminium	Berths	6
Engine(s)	1 x Volvo Penta D3-110I-H diesel	Hp/Kw	110.00 (hp), 80.96 (kw)
Asking price	€ 425.000 (VAT Not paid)	Lying	contact Monnickendam

CONTACT

Sales office	De Valk Monnickendam B.V.	Telephone	+31 (0)299 65 63 50
Address	Hoogedijk 6 1145 PM Katwoude NL	E-mail	monnickendam@devalk.nl

DISCLAIMER

These particulars are given in good faith as supplied but cannot be guaranteed.



GENERAL

Model	CONCORD 47.5
Type	sailing yacht
LOA (m)	14,45
LWL (m)	11,75
Beam (m)	4,36
Draft (m)	2,15
Air draft (m)	19,81
Year built	1999
Launched	2000
Builder	Alumarine B.V., Sint Annaland
Country	The Netherlands
Designer	Dick Koopmans / B. Busman
Displacement (t)	20
Ballast (tonnes)	5,7 tonnes, lead in aluminium
CE norm	A
Hull material	aluminium
Hull colour	blue Dark Blue hull painted in 2019 by De Gier in Enkhuizen/NL
Hull shape	round-bilged
Keel type	fin keel
Superstructure material	aluminium White coloured superstructure, painted in 2019 by De Gier/NL
Rubbing strake	yes
Deck material	aluminium
Deck finish	teak
Cockpit deck finish	teak
Antifouling (year)	11-2024. Underwater ship sandblasted in the winterperiod 2018/2019 and new underwater system build on by De Gier Maritiem in The Netherlands
Dorades	4 x stainless steel dorades
Window frame	aluminium



Window material	tempered glass 10MM
Deckhatch	8 x Goiot deckhatch with aluminium frame
Insulation	foam
Fuel tank (litre)	aluminium Approx. 450 litre
Level indicator (fuel tank)	Digital BEP system
Fuel daytank (litre)	aluminium Approx. 187 litre (new 2018/2019 by De Gier Maritiem)
Freshwater tank (litre)	aluminium Approx 630 litre (2x315L)New 2018/2019, tanks cleaned 11-2023.
Level indicator (freshwater)	Digital BEP system
Blackwater tank (litre)	aluminium Approx. 260 litre
Level indicator (blackwater)	Digital BEP system
Greywater tank (litre)	yes
Level indicator (greywater)	Digital BEP system
Wheel steering	Whitlock
Outside helm position	yes
Emergency tiller	yes
Extra info	Hull built in ABS certified aluminium type ALMG 4.5 MnH 321 in the following measurements: Hull under waterline 8MM. Hull above waterline 8MM. Keelplating 8MM. Deck, superstructure and cockpit 6MM. Superstructure sides 6MM. Tanktops and manhole covers 6MM. Engine mounts 8 and 20MM. Mast foundation 80 and 100MM.

ACCOMMODATION

Cabins	2
Berths	6
Interior	teak Burma teak
Floor	wood
Open cockpit	yes
Deck saloon	yes
Saloon	with comfortable around sit and panorama view
Headroom saloon (m)	Approx. 1.90m



Heating	central heating Kabola
Air-conditioning	reverse cycle airco Westerbeke air-conditioning forepeak/main cabin/aft cabin
Opening door to cockpit	yes
Galley	yes
Countertop	tiles
Sink	stainless steel 2x stainless steel sink
Cooker	induction Kuppersbusch 4 burner induction stove
Extractor	yes
Microwave/oven combi	Kenwood 8 in 1 multifuncion oven/air fryer
Fridge	Isotherm 160 L. stainless steel with 3 separate drawers with 10 cm of insulation
Freezer	Isotherm 120 L. stainless steel with 2 drawers with 20 cm of insulation
Hot water system	on central heating
Water pressure system	electrical
Manual and/or foot pump	At one sink in the galley
Owners cabin	double bed
Wardrobe	yes
Bathroom	separate
Toilet	Jabsco
Toilet system	manual
Wash basin	yes
Shower	yes
Guest cabin 1	v-bed
Wardrobe	yes
Washing machine	Natural instinct. Not a permanent build in installation
Dryer	Spindle. Not a permanent build in installation

MACHINERY

No of engines	1
Make	Volvo Penta



Type	D3-110I-H
HP	110
kW	80.96
Fuel	diesel
Year installed	2019
Engine cooling system	freshwater heat exchanger
Drive	shaft
Engine controls	electrical Volvo Penta
Gearbox	Volvo Penta HS68IV-A
Bowthruster	electric Max Power (2011)
Propeller type	feathering Max prop automatic feathering propeller
Propeller blades	5 bladed
Propeller shaft material	stainless steel
Manual bilge pump	yes
Electric bilge pump	yes
Bilge alarm	yes
Generator	Fisher Panda 8000i (2019)
Running hours generator	803 hrs. (18-06-2025)
Start battery	Optima 12V
Service battery	450 ah Mastervolt batteries
Generator battery	Optima 12V
Bowthruster battery	260 ah Windlass/bow thruster batteries
Wind generator	D400 windgenerator
Solar panel	300W solar panel and 600W solar panel
Shorepower	with cable
Watermaker	Schenker Smart 60 watermaker 60ltr/hr, 157 hrs (18-06-2025), Wycomar UV250 and water filter system
Extra info	Watts & Sea hydro generator 300W
Extra info	Water separator filter between the main fuel tank and day tank
Extra info	Sound prove insulation in the machine room

NAVIGATION



Compass	Liquid compass
Depth sounder	B&G
Forw. looking depth sounder	B&G
Log	B&G
Windset	B&G
VHF	Matrix Standard VHF
VHF handheld	2x Icom VHF handheld
Autopilot	B&G
Wind vane steering install.	Hydrovane with stubby vane
Rudder angle indicator	In the screen of the autopilot
Radar	B&G
GPS	B&G
Plotter	B&G
Radio receiver	Icom SSB radio
Extra info	Iridium go, Iridium 9555 satelite phone, Starlink

EQUIPMENT

Fixed hardtop	yes
Cockpit cover	A sail over the cockpit and front deck
Bimini	Aluminium bimini with rain catchment
Cockpit table	Foldable teak table
Bathing platform	yes
Boarding ladder	stainless steel
Transom door	yes
Deck shower	Warm/cold
Anchor	Bruce 30 KG Stainless steel Bruce anchor
Anchor chain	100m / 10mm stainless steel chain
Anchor 2	Bruce 28KG Stainless steel Bruce anchor
Anchor chain	60m / 10mm stainless steel chain
Chain counter	Quick chain counter, never used by the current owner. (function not known) New remote for the main windlass available, need to be installed.



Windlass	electrical 1 x 3000 Simpson Lawrence and 1 x 1500 Simpson Lawrence
Deck wash	yes
Dinghy	rigid hull Caribe 2.90 m aluminium inflatable rib (2023)
Outboard	15HP Yamaha 2-stroke outboard (2023)
Davits	stainless steel Edson davits
Davits controls	manual
Sea railing	wire Stainless steel pole and wire
Life raft	container HYF 6-person
Life raft (pers)	6
Last life raft survey	Next service 11/2026
Lifebuoy	2 x Plastimo horseshoe life boyes
Danbuoy	1 x Danbuoy, 1 x life ring
Rope cutter	yes
Fenders	yes
Mooring lines	yes
Spare parts	yes
Tools	yes
TV	Salora 22"
Radio-cd player	Pioneer
Fire extinguisher	5x
Extra info	- 2 x 12 litre and 2 x 25 litre cannistors for patrol. - 6 x 25 litre cannistors for diesel
Extra info	Bauer junior dive compressor, 2 x 10 litre steel dive cylinders
Extra info	Droque anchor with bridle and rope Magna gas BBQ with 2 x gas cylinders 2 x Aqua Marine inflatable SUP's 1 x Normal Bosun chair 1 x Bosun/climb gear with self supported safety gear Grab bags with all emergency equipment require for Class A vessel
RIGGING	
Rigging	cutter
Standing rigging	wire More information in the extra informtion



Brand mast	Reckmann (2005)
Material mast	aluminium
Spreaders	2x aluminium spreaders
Mainsail	North Sails (2019), North Sails storm sail (2019)
Mainsail cover	Lazy jack system and mainsail cover
Battcars	Harken
Fully battened mainsail	yes
Cutterstay	Reckmann Hydraulic furling
Main staysail	North Sails (2019)
Jib	North Sails
Jib I	North Sails
Genoa	Reckmann Hydraulic furling, Genoua (2019)
Code Zero	North Sails (2019)
Spinnaker	North Sails (2019)
Stormjib	North Sails (2019)
Backstay adjuster	hydraulic Navtec manual Backstay ajuster
Boomvang	hydraulic Navtec manual boomvang
Winchcovers	yes
Spi-pole	aluminium 2x
Extra info	5x Andersen 2speed ST o.w. 4 electric hydraulic
Extra info	Reckman electric hydraulic furling headsail system. Reckman electric hydraulic furling inner forestay system. Furling inner jib challenge Dacron. Navtec central pump system in the cockpit. Stainless steel granny bars at the mast New rigging placed by De Gier Maritiem in the winter 2018/2019. Last service and official check of the rigging 11-2023



CONCORD 47.5



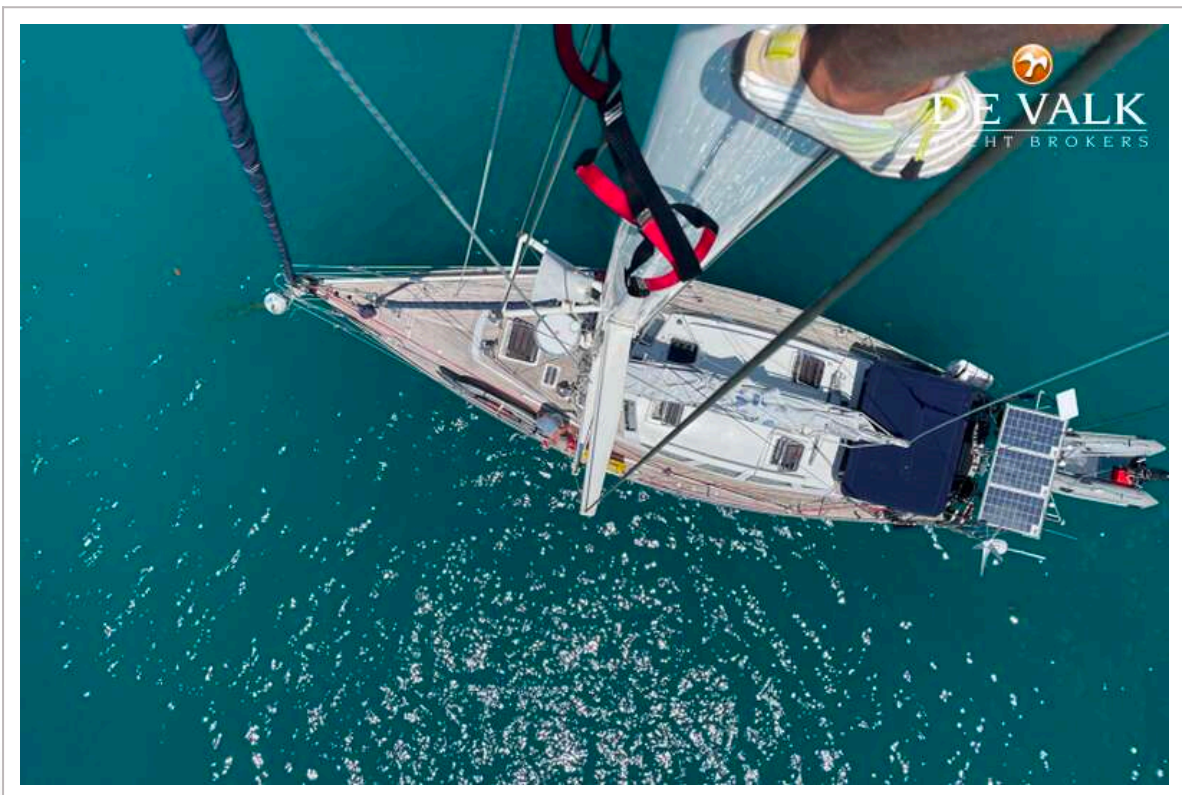
CONCORD 47.5



CONCORD 47.5



CONCORD 47.5



CONCORD 47.5



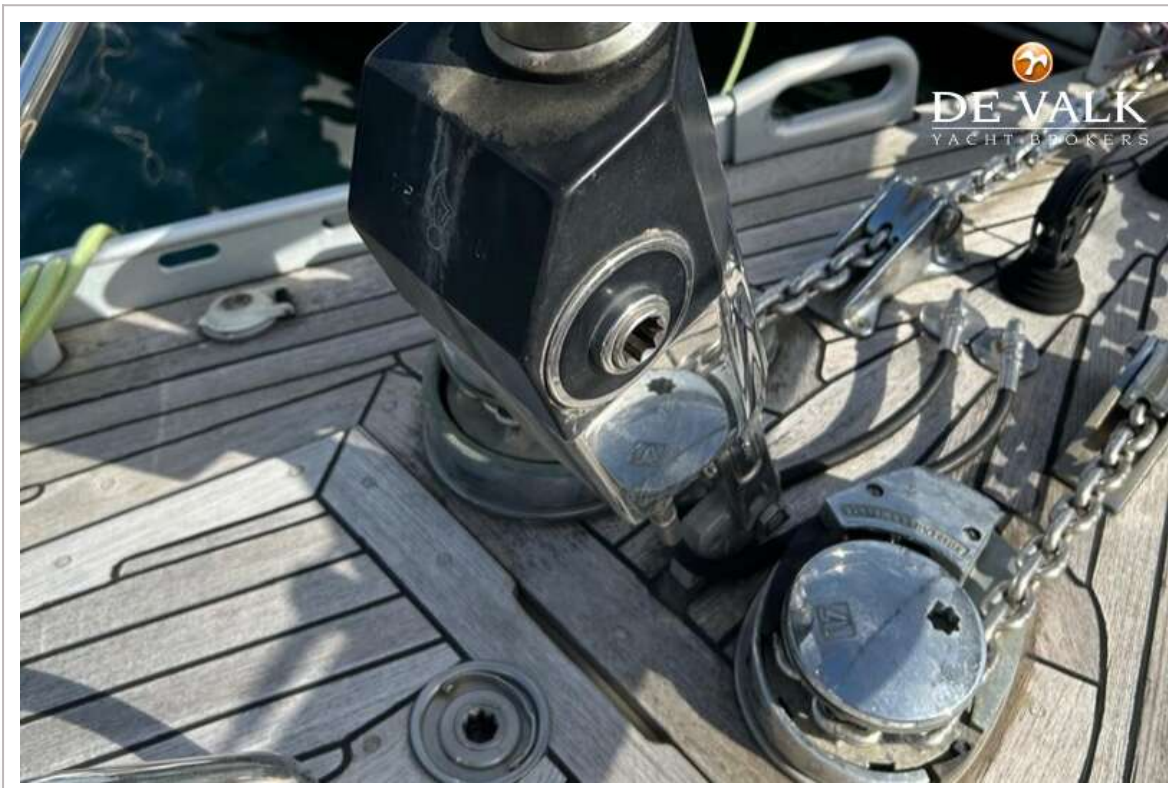
CONCORD 47.5



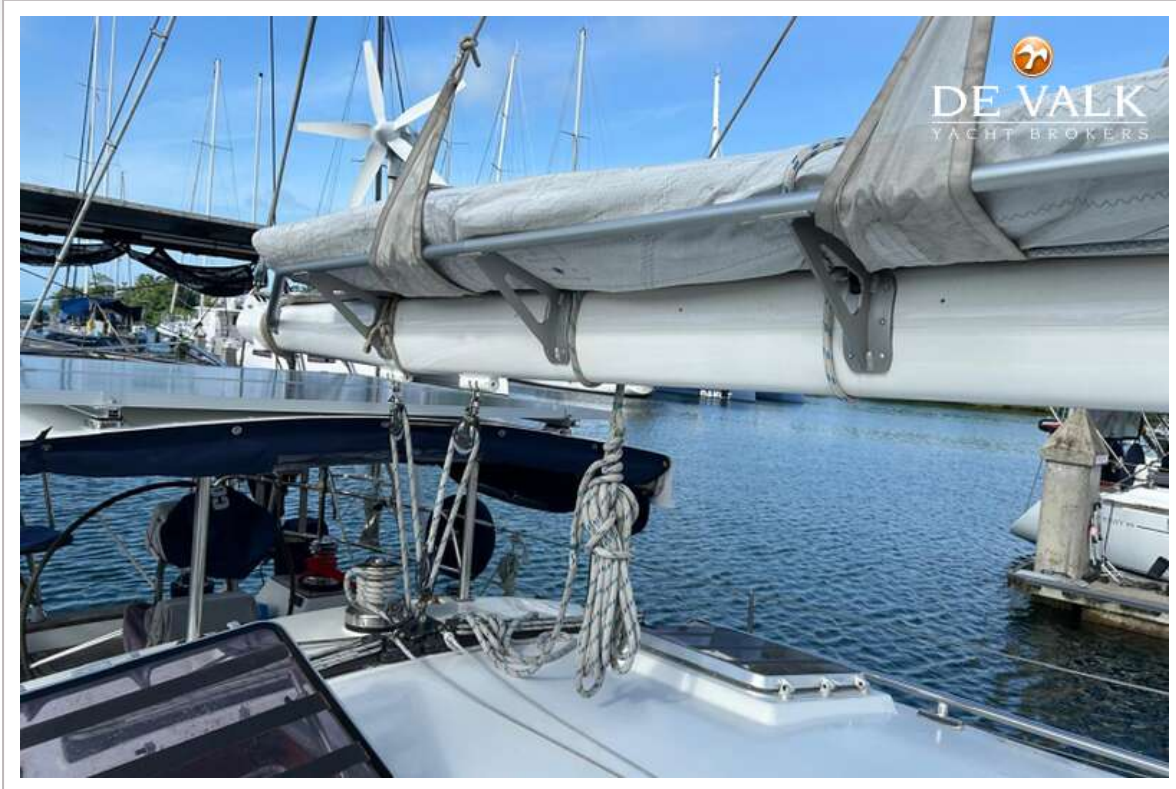
CONCORD 47.5



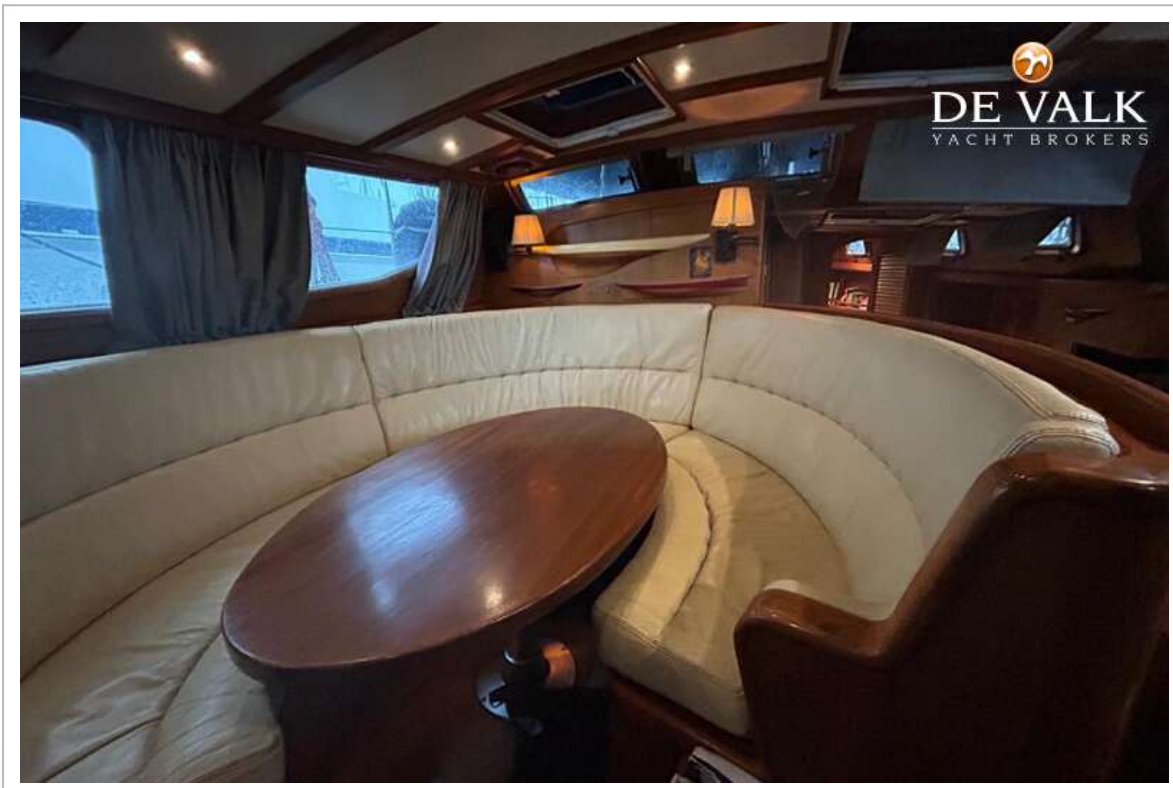
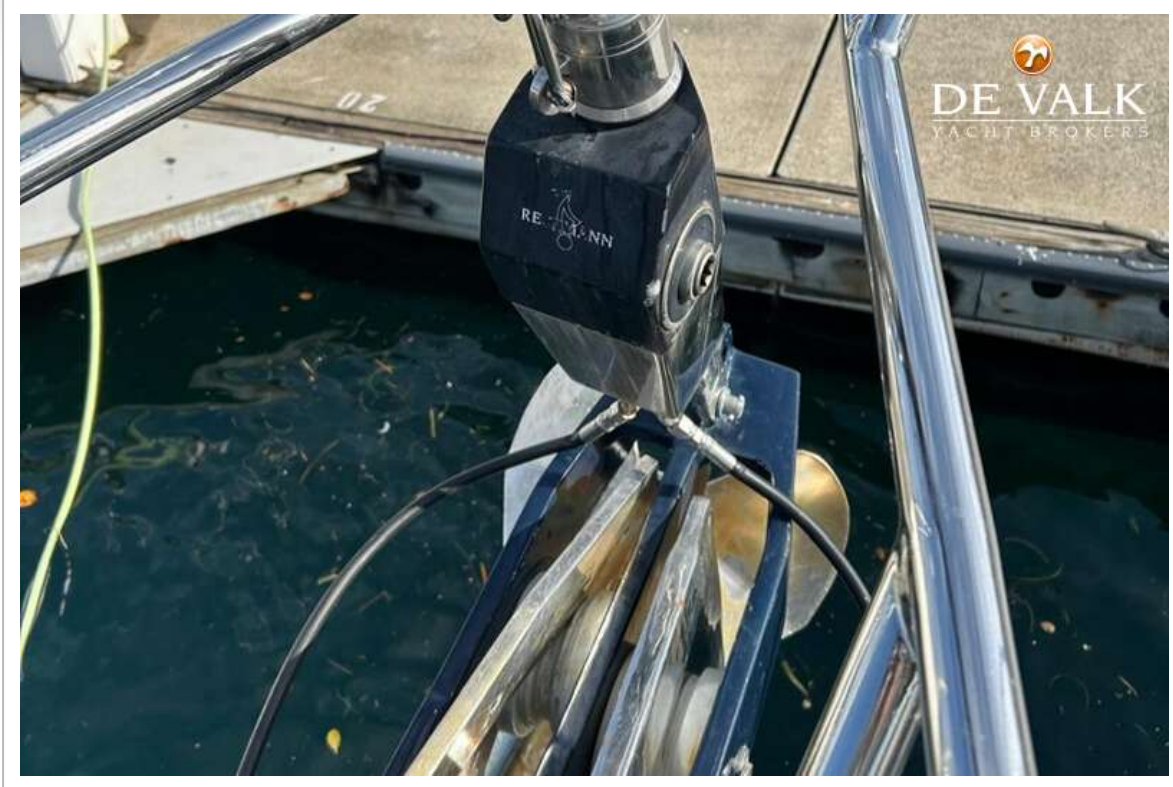
CONCORD 47.5



CONCORD 47.5



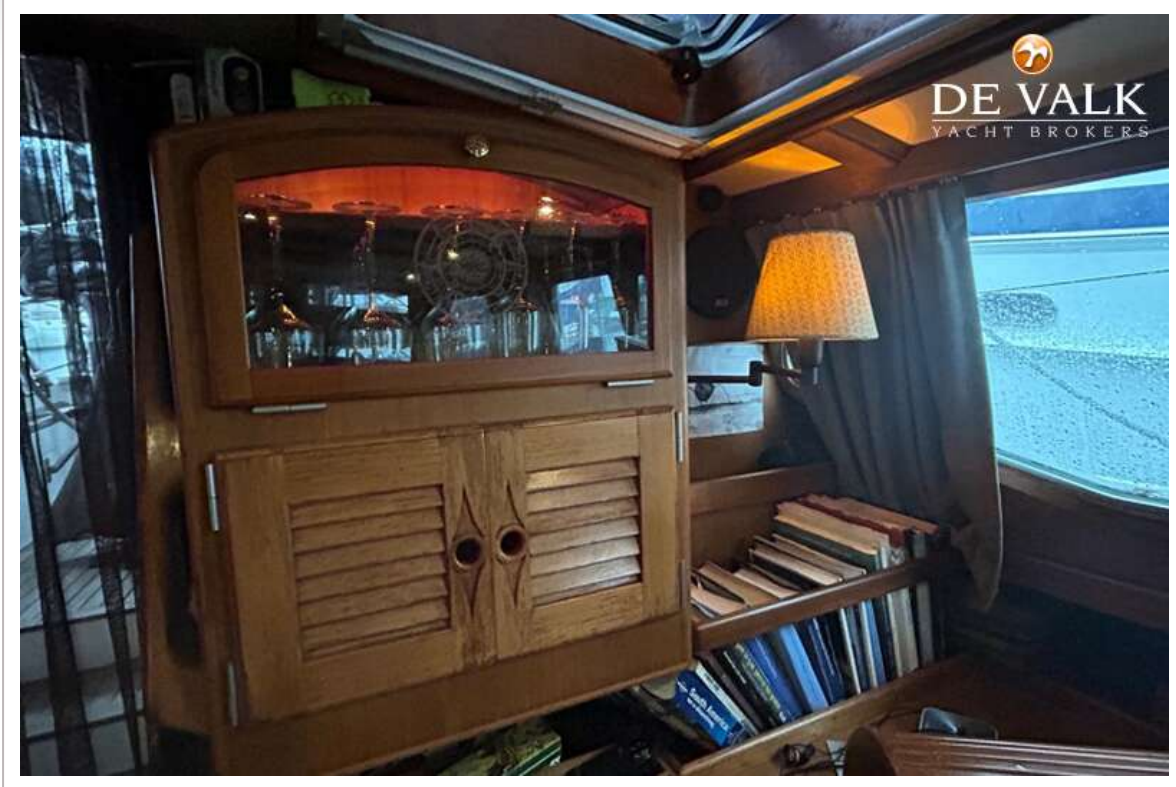
CONCORD 47.5



CONCORD 47.5



CONCORD 47.5



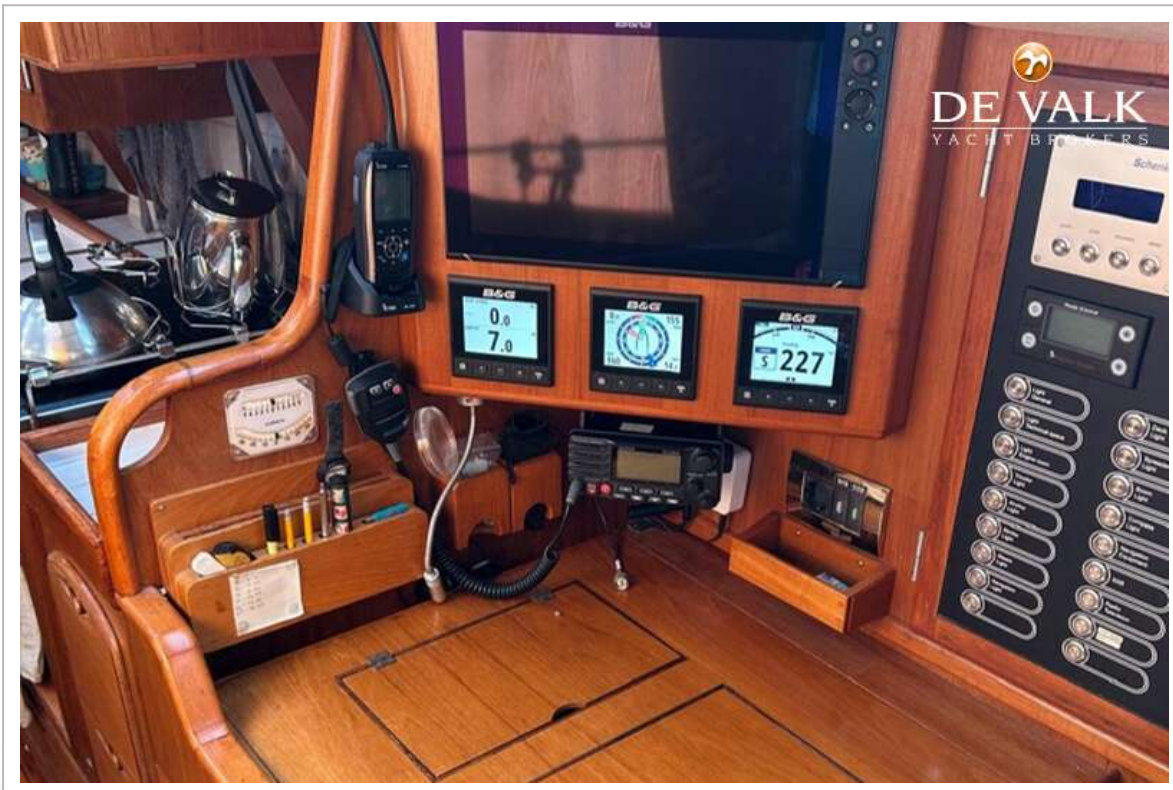
CONCORD 47.5



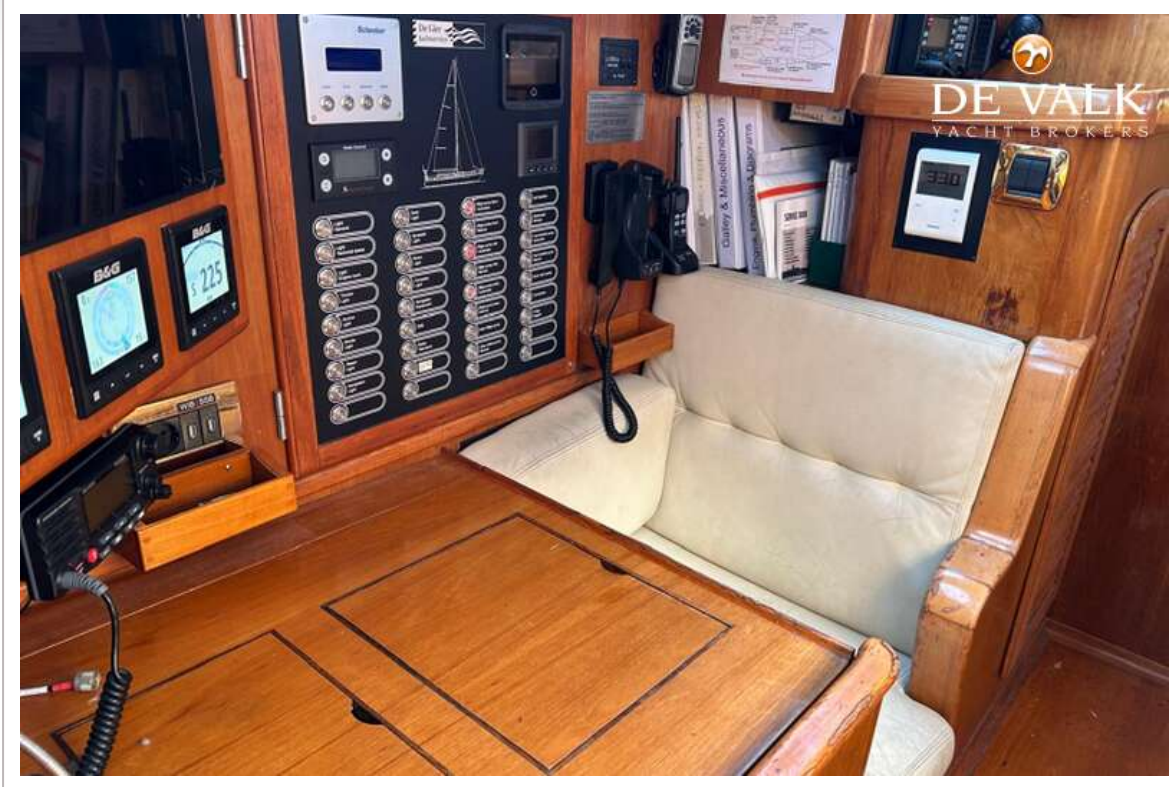
CONCORD 47.5



CONCORD 47.5



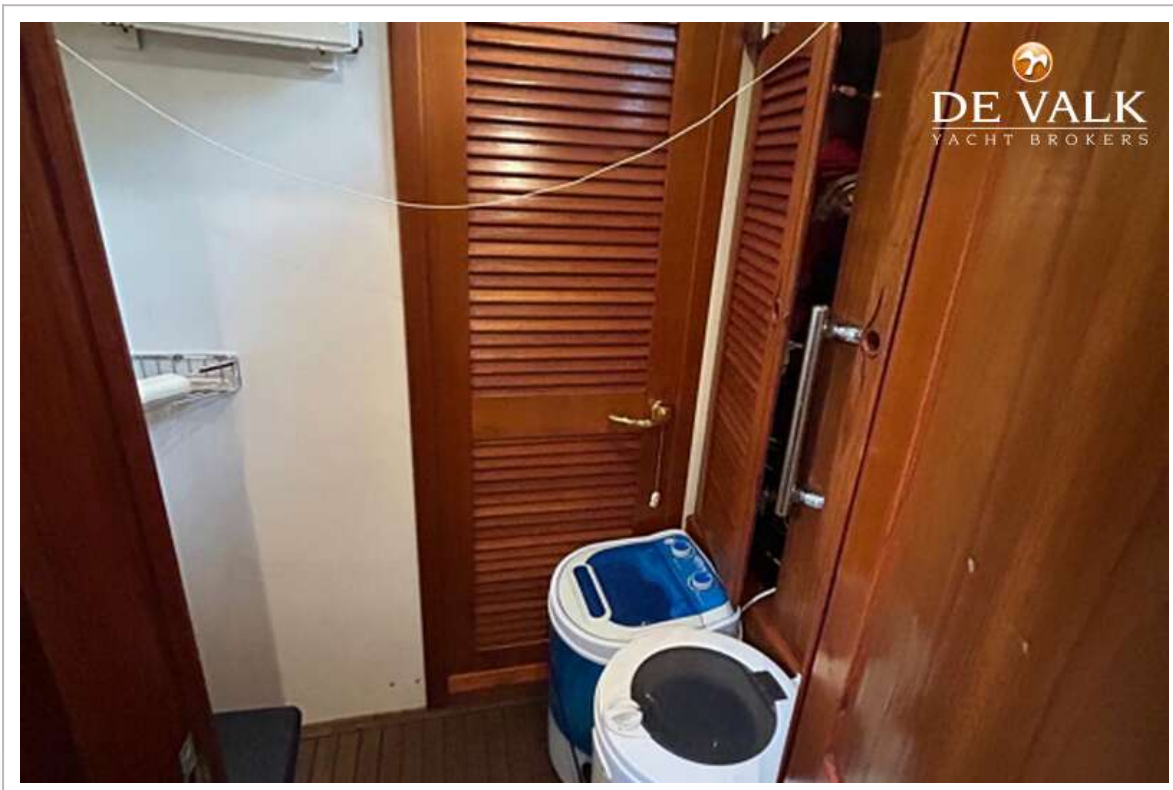
CONCORD 47.5



CONCORD 47.5



CONCORD 47.5



CONCORD 47.5



CONCORD 47.5



CONCORD 47.5



CONCORD 47.5

