



DE VALK
YACHT BROKERS



GRAND BANKS 42 CLASSIC



DE VALK
YACHT BROKERS

GRAND BANKS 42 CLASSIC

BROKER'S COMMENTS

Well built and seaworthy Grand Banks 42 Classic by American Marine in Singapore. A nice motorboat which has facilities to make long journeys. With a good state of overall maintenance she will guarantee you years of pleasure. Minimum airdraft 3,72 m.

Mark Hesselmans

SPECIFICATIONS

Dimensions	12.75 x 4.15 x 1.27 (m)	Builder	American Marine
Built	1977	Cabins	2
Material	GRP	Berths	4
Engine(s)	2 x John Deere 6404DF-01 diesel	Hp/Kw	2 x 135.00 (hp), 99.22 (kw)
Asking price	sold (VAT)	Lying	at sales office

CONTACT

Sales office	De Valk Loosdrecht B.V.	Telephone	+31 (0)35 582 90 30
Address	't Breukeleveense Meentje 6 1231LM Loosdrecht / Wijdmeren NL	E-mail	loosdrecht@devalk.nl

DISCLAIMER

These particulars are given in good faith as supplied but cannot be guaranteed.



GRAND BANKS 42 CLASSIC

GENERAL

Model	GRAND BANKS 42 CLASSIC
Type	motor yacht
LOA (m)	12,75
LWL (m)	12,34
Beam (m)	4,15
Draft (m)	1,27
Air draft (m)	3,72
Headroom (m)	1,95
Year built	1977
Builder	American Marine
Country	Singapore
Displacement (t)	16
Hull material	GRP
Hull colour	white
Hull shape	deep-V
Keel type	long keel
Superstructure material	GRP
Rubbing strake	steel
Deck material	GRP
Deck finish	teak
Superstructure deck finish	teak
Cockpit deck finish	teak
Antifouling (year)	2024
Window frame	Teak
Window material	glass
Flybridge	yes
Flybridge cover	Double Q
Mast can be lowered	manual
Fuel tank (litre)	2460
Level indicator (fuel tank)	yes



GRAND BANKS 42 CLASSIC

Freshwater tank (litre)	929
Level indicator (freshwater)	yes
Blackwater tank (litre)	350
Level indicator (blackwater)	yes
Blackwater tank extraction	deck extraction + pump
Wheel steering	mechanical
Flybridge helm position	mechanical

ACCOMMODATION

Cabins	2
Berths	4
Interior	teak
Layout	yes
Floor	parquet
Saloon	Classic Teak
Headroom saloon (m)	1,95
Heating	diesel ducted hot air Ebderspächer
Air-conditioning	reverse cycle airco Marine Air Systems 16.000 BTU
Aft Cabin	yes
Dinette	L-Shaped
Galley	yes
Countertop	corian
Sink	stainless steel 2x
Cooker	induction 2-burner
Oven	Pelgrim
Microwave	Domo
Fridge	with freezer compartment Whirlpool 2x (2012)
Hot water system	220V + engine Boiler
Water pressure system	electrical
Owners cabin	double bed + single bed
Wardrobe	hanging/drawers/shelves



GRAND BANKS 42 CLASSIC

Bathroom	en suite Re-fitted
Toilet	en suite
Toilet system	electric
Wash basin	in the bathroom
Shower	en suite
Bath tub	en suite
Guest cabin 1	v-bed
Wardrobe	hanging/drawers/shelves
Bathroom	en suite
Toilet	en suite
Toilet system	manual
Wash basin	in the bathroom
Shower	en suite

MACHINERY

No of engines	2
Make	John Deere
Type	6404DF-01
HP	135
kW	99.22
Fuel	diesel
Year installed	1977
Maximum speed (kn)	9
Engine hours	1860
Engine cooling system	freshwater heat exchanger
Drive	shaft
Shaft seal	yes
Engine controls	bowden cable Morse
Gearbox	hydraulic Borg Warner
Bowthruster	electric Vetus
Sternthruster	electric Vetus



GRAND BANKS 42 CLASSIC

Exhaust	watercooled
Propeller type	fixed
Propeller blades	yes
Propeller shaft material	stainless steel
Shaft lubrication	water
Electric bilge pump	yes
Electrical installation	12V/230V
Generator	wet exhaust Mase 7,1 kW
Batteries	yes
Start battery	2x Bosch 95 AH
Service battery	2x 200 Ah
Generator battery	Bosch 75 Ah
Bowthruster battery	yes
Sternthruster battery	yes
Battery monitor	Mastervolt
Battery charger	Mastervolt 12/25-3
Battery charger/inverter	Victron Quattro 12/3000/120 3000 Watt 120 A
Shorepower	with cable

NAVIGATION

Compass	Ritchie liquid 2x
Depth sounder	Humminbird Matrix 17
Windset	yes
VHF	Raytheon RAY45 + icom IC-M120
Autopilot	Benmar
Radar	Raytheon R21X
GPS	Raytheon RC 320
Plotter	Raytheon RC 320
Navtex	Furuno NX300
Navigation lights	yes
Loudhailer	Apelco



GRAND BANKS 42 CLASSIC

Extra info

Rearview camera

EQUIPMENT

Bimini	yes
Window cover	yes
Cockpit table	yes
Bathing platform	yes
Anchor	yes
Anchor chain	yes
Windlass	electrical Simpson-Lawrence
Dinghy	rigid hull
Sea railing	teak
Grab rail (superstructure)	yes
Railing side opening gates	yes
Wiper	2x
Horn	electric
Fenders	yes
Mooring lines	yes
Fire extinguisher	yes
Extra info	Alphatron satellite antenna, Indesit wash/dry combination

RIGGING

Material mast	aluminium
---------------	-----------



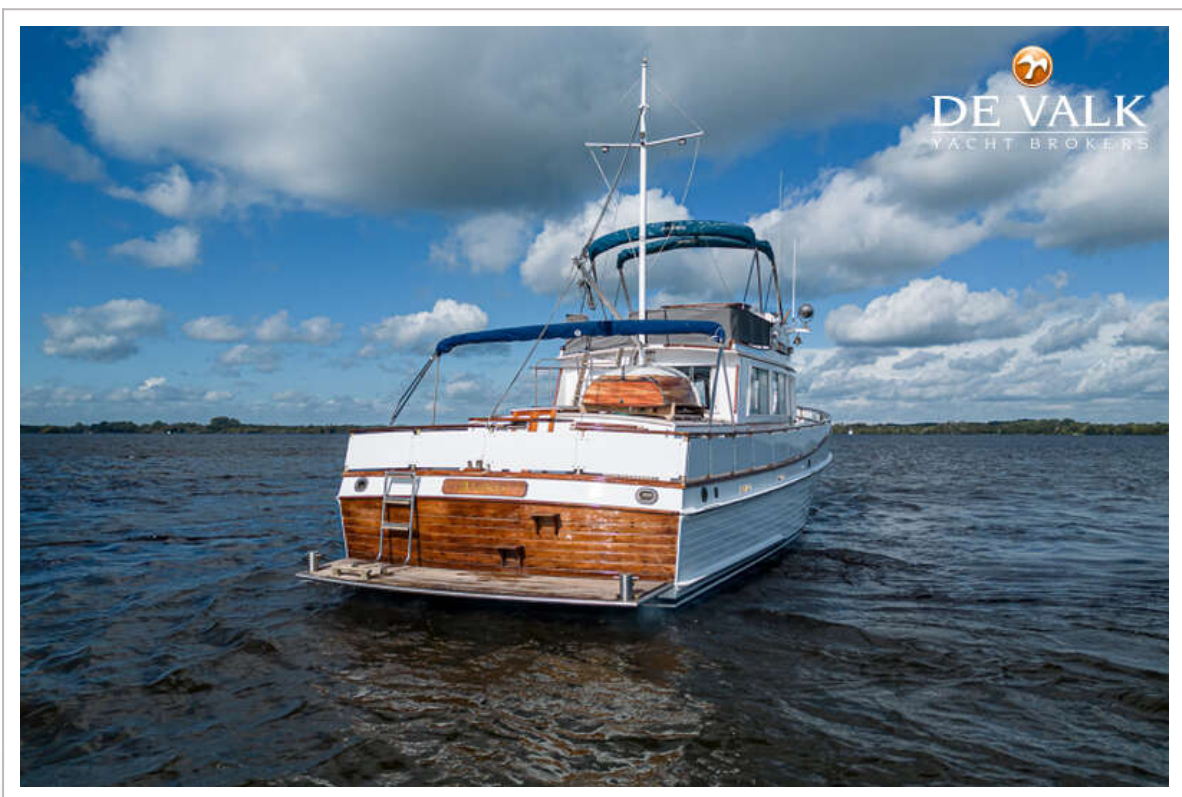
GRAND BANKS 42 CLASSIC



GRAND BANKS 42 CLASSIC



GRAND BANKS 42 CLASSIC



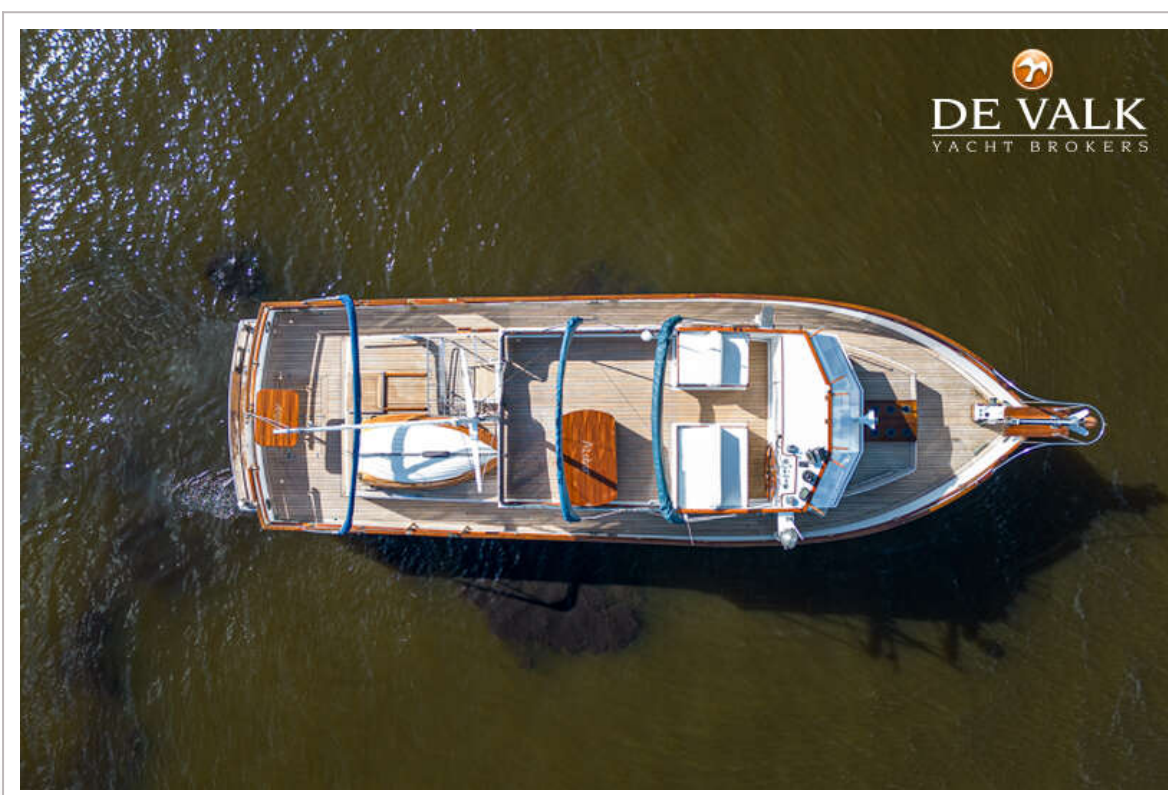
GRAND BANKS 42 CLASSIC



GRAND BANKS 42 CLASSIC



GRAND BANKS 42 CLASSIC



GRAND BANKS 42 CLASSIC



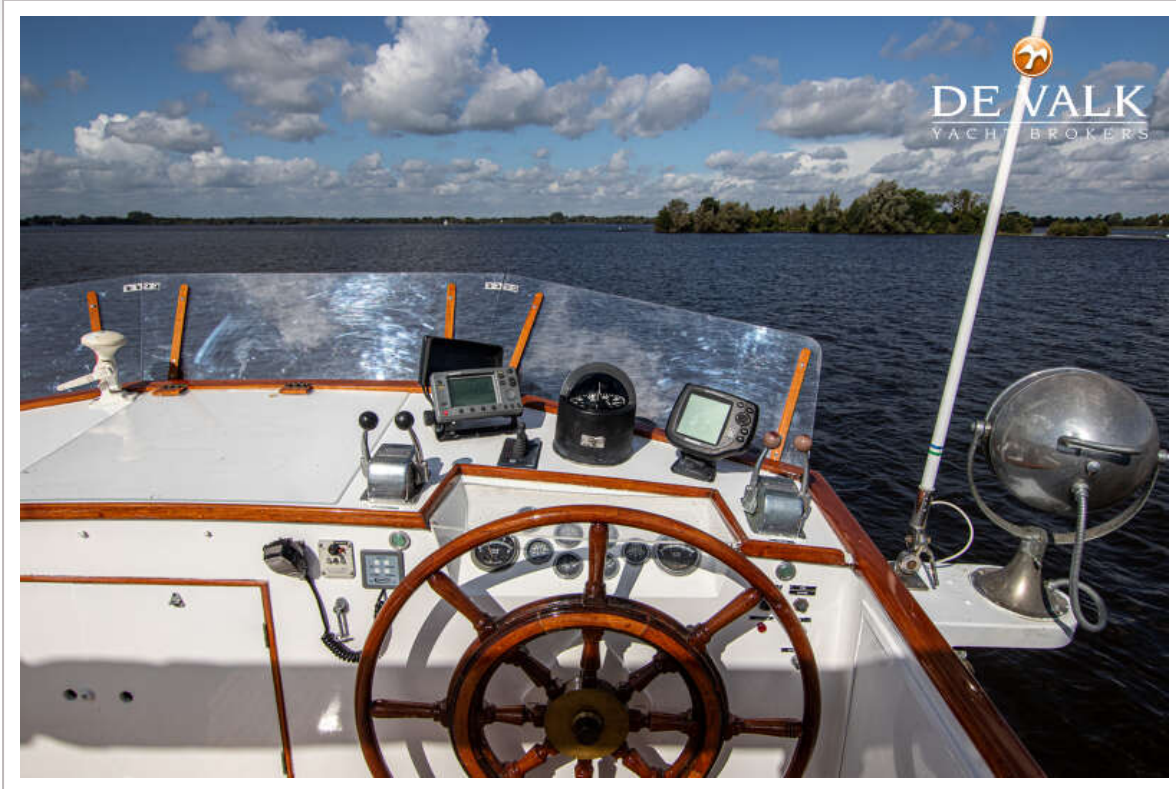
GRAND BANKS 42 CLASSIC



GRAND BANKS 42 CLASSIC



GRAND BANKS 42 CLASSIC



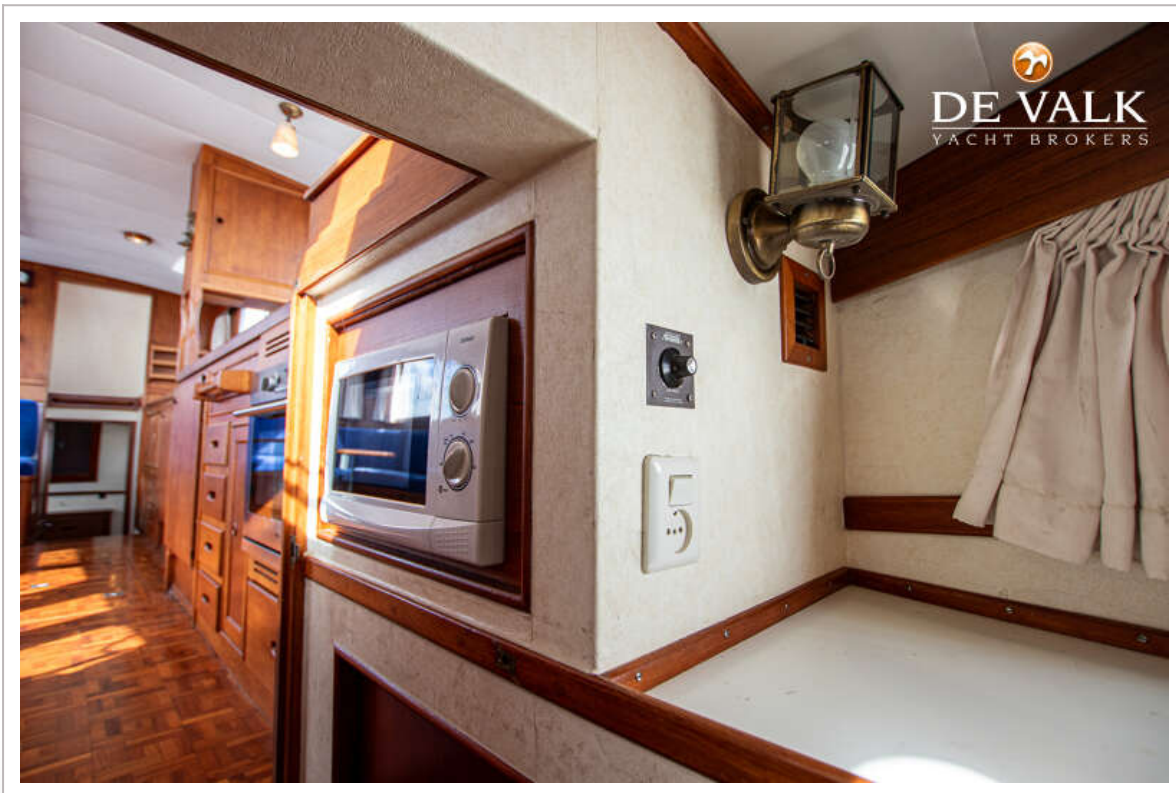
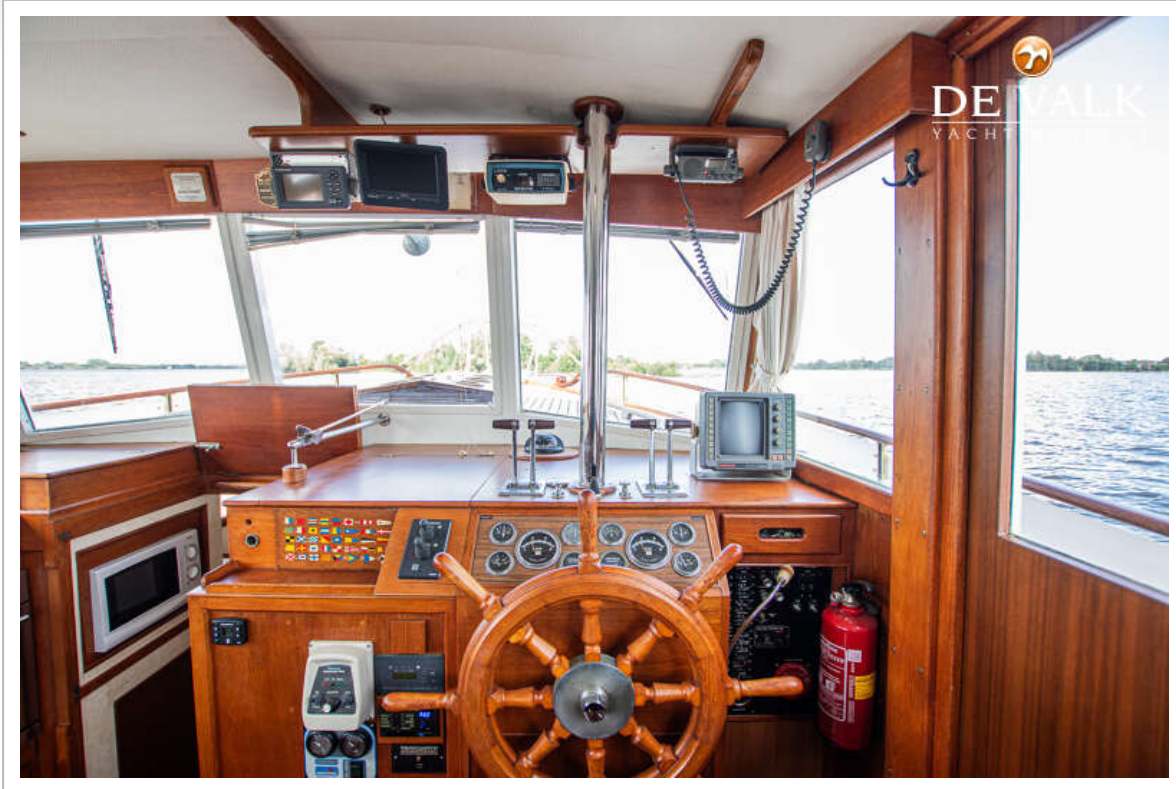
GRAND BANKS 42 CLASSIC



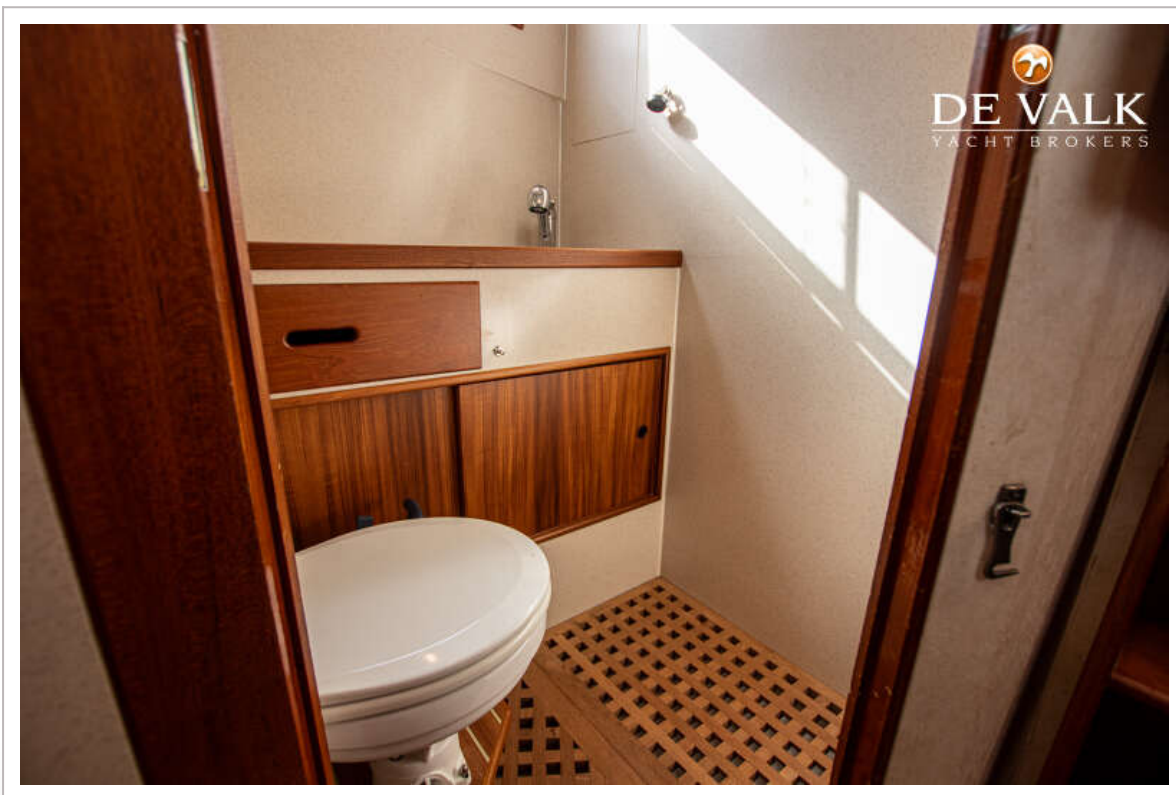
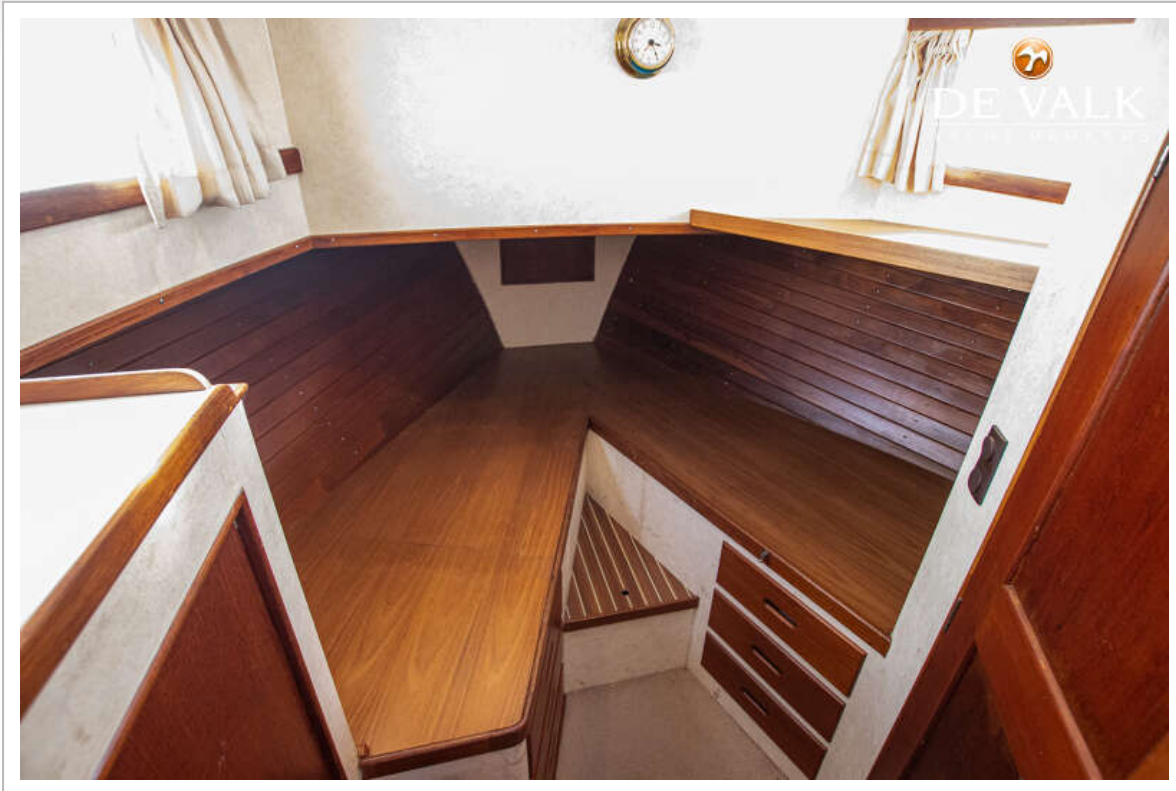
GRAND BANKS 42 CLASSIC



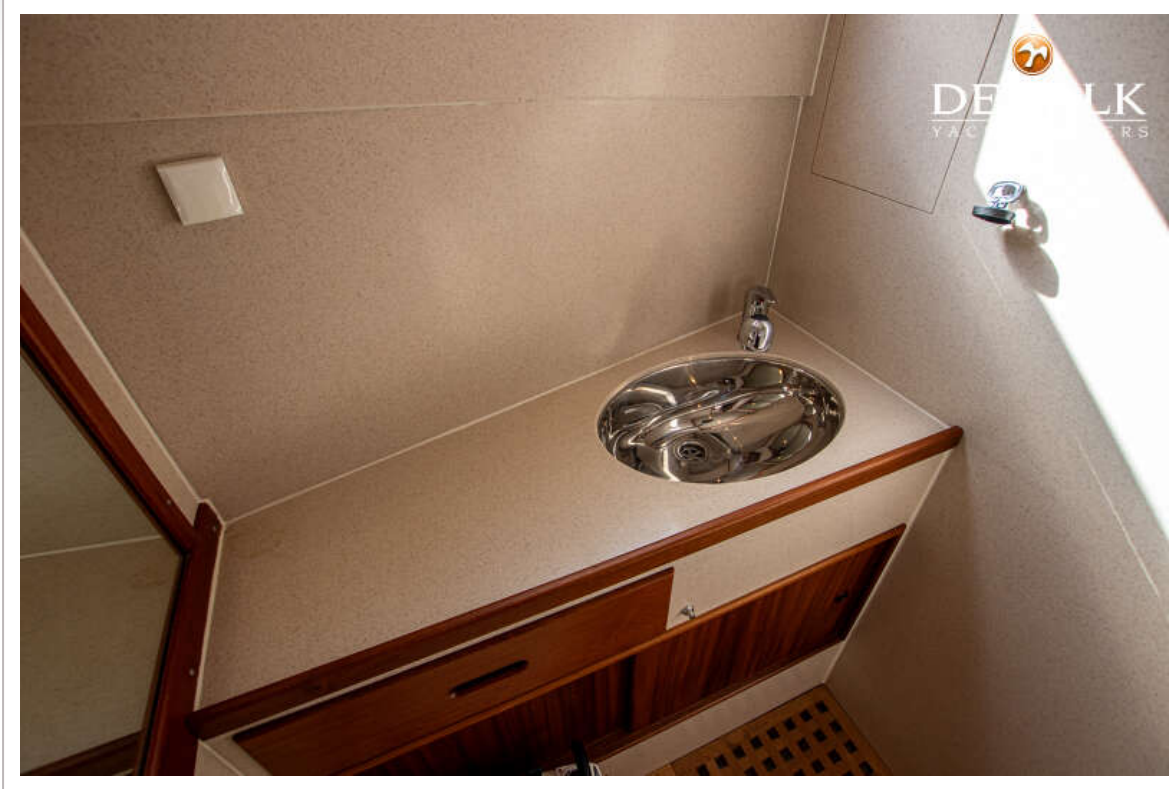
GRAND BANKS 42 CLASSIC



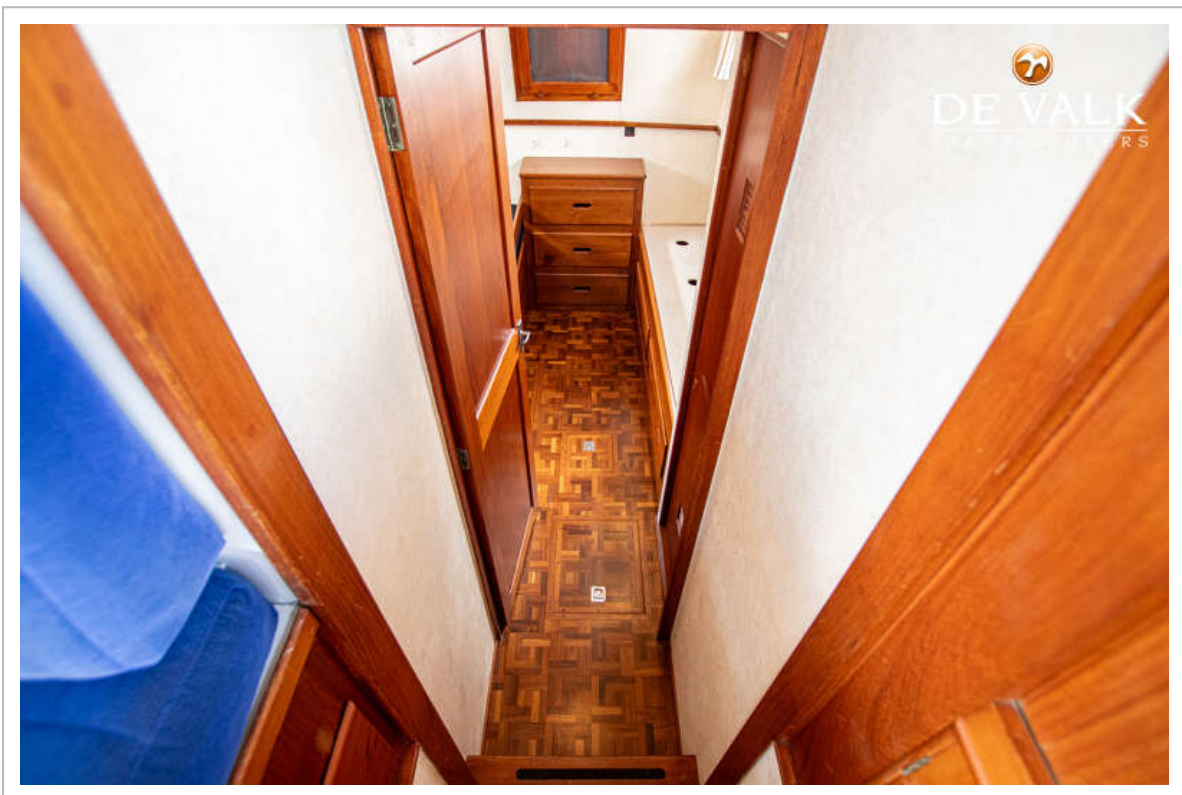
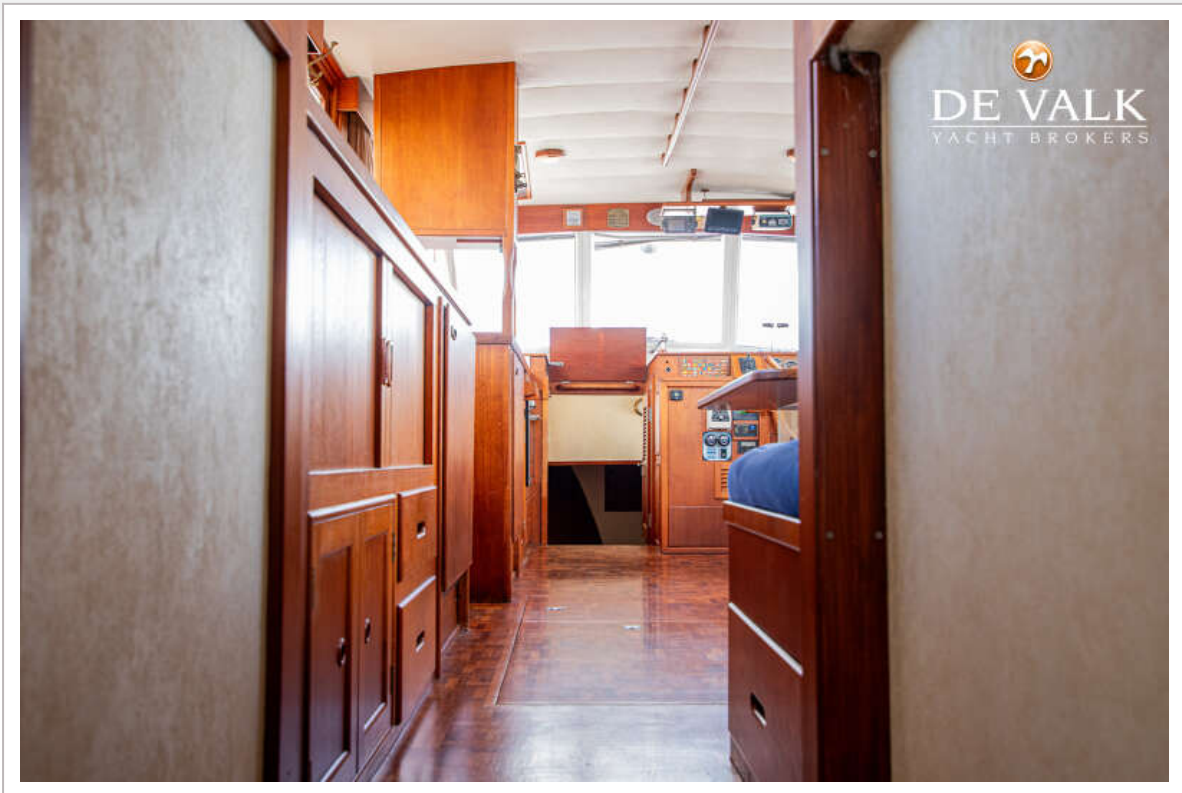
GRAND BANKS 42 CLASSIC



GRAND BANKS 42 CLASSIC



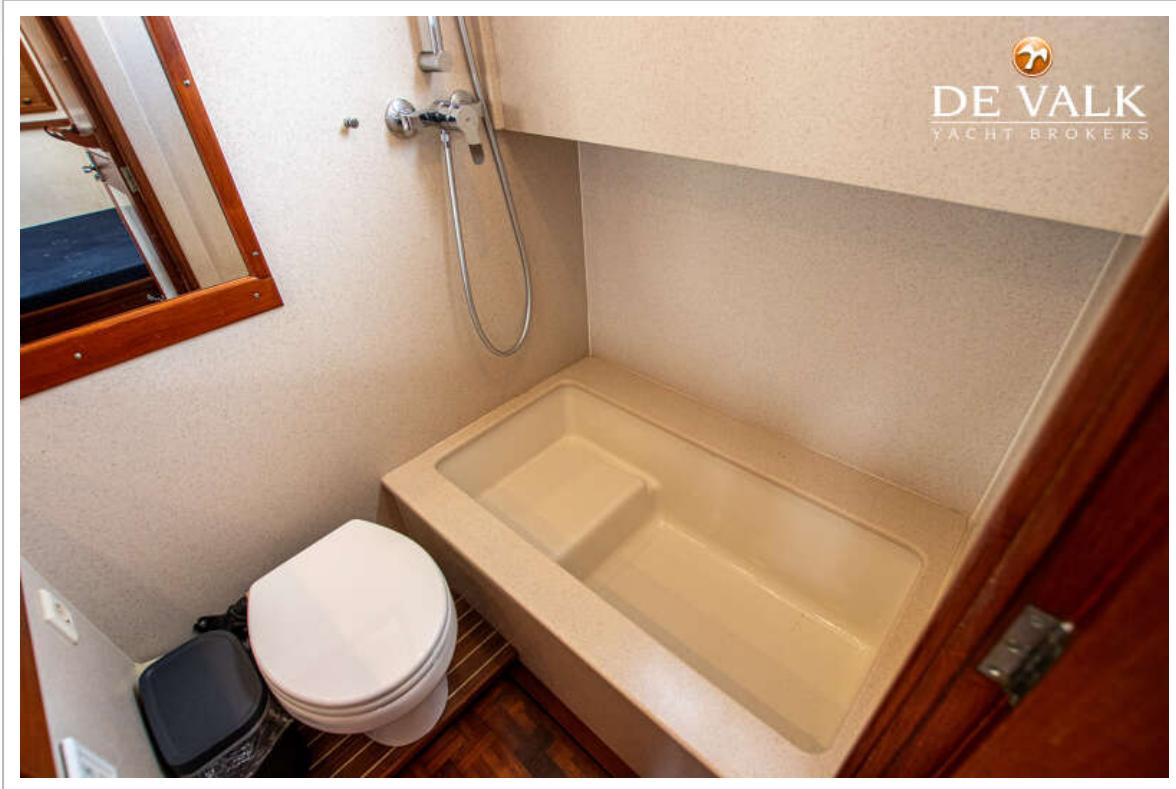
GRAND BANKS 42 CLASSIC



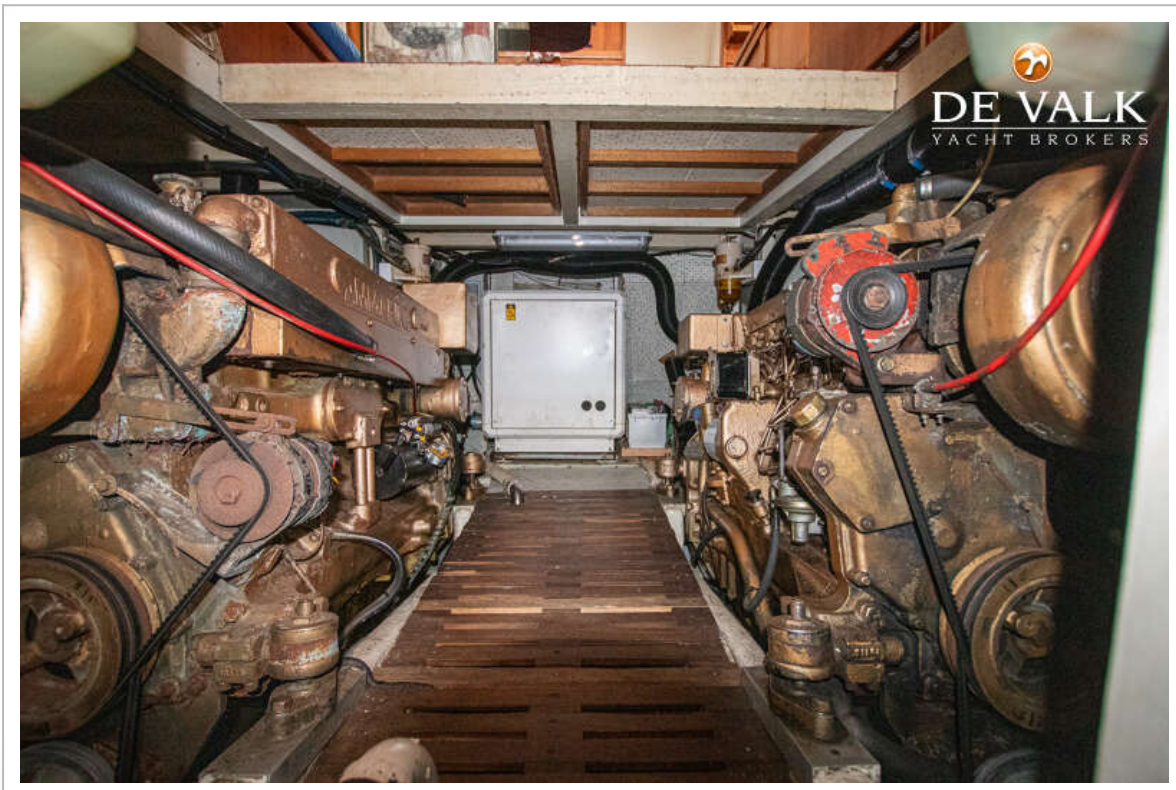
GRAND BANKS 42 CLASSIC



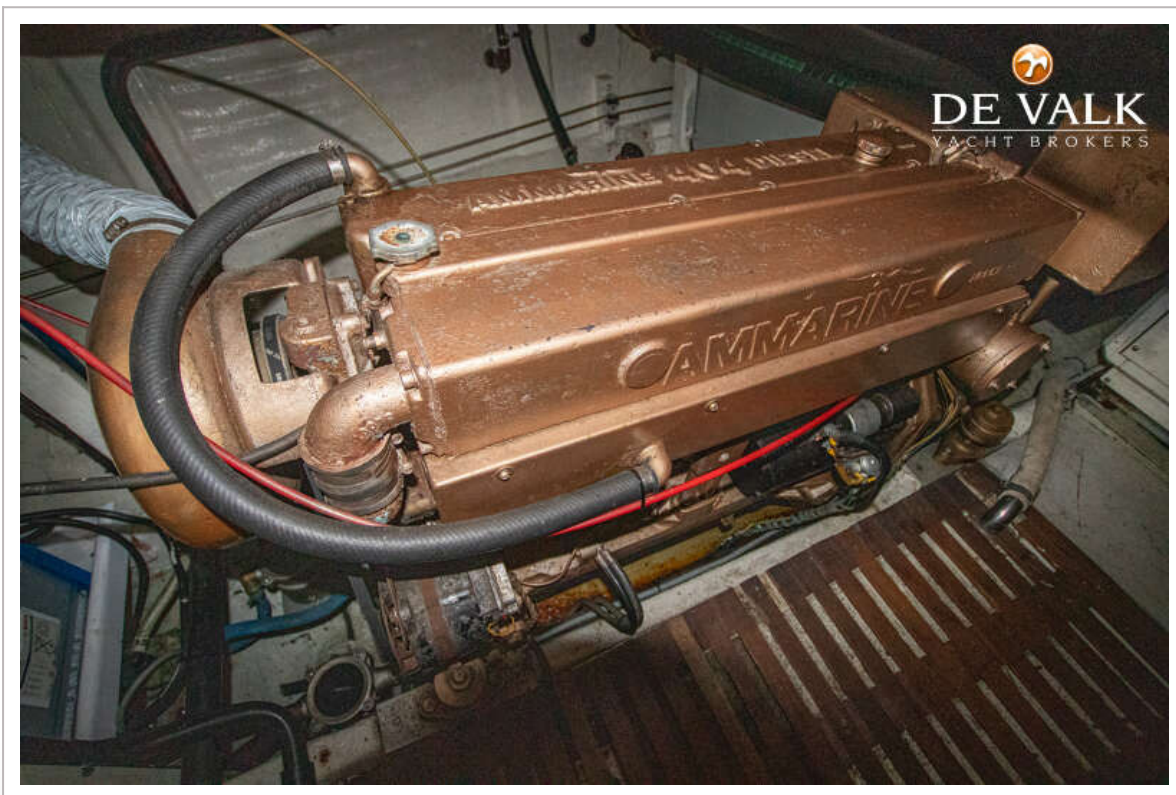
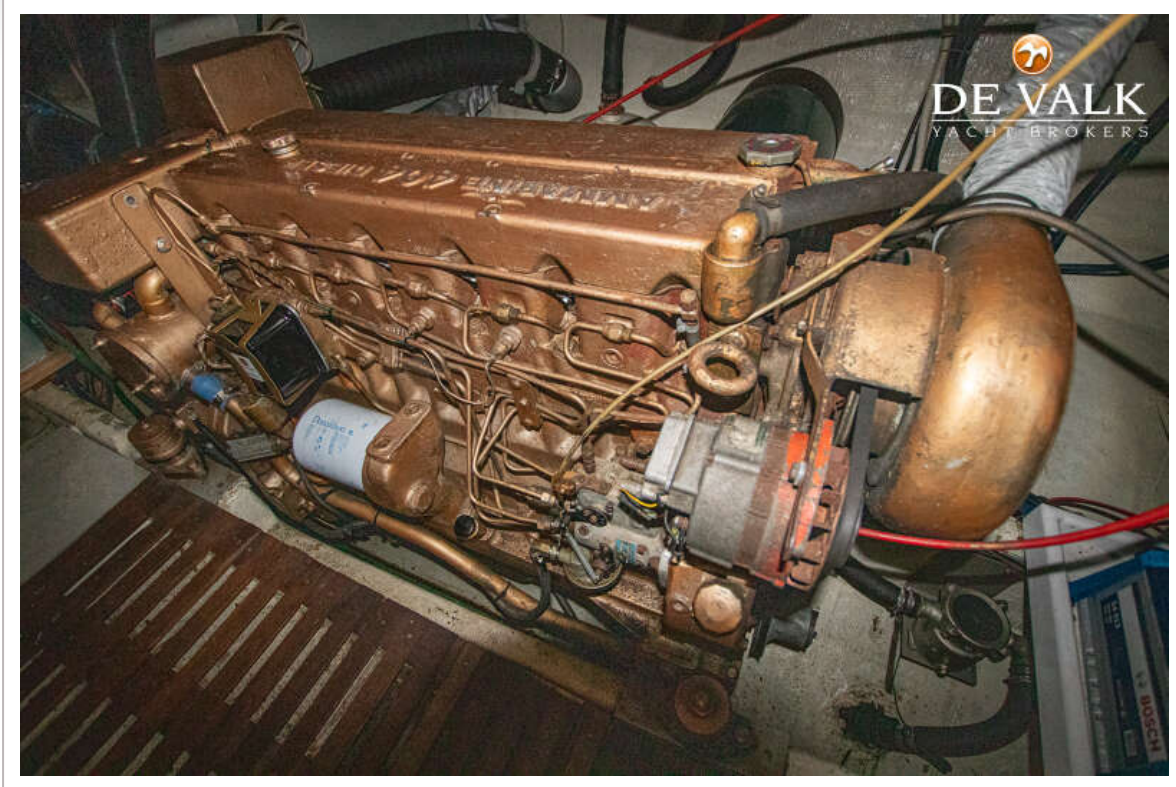
GRAND BANKS 42 CLASSIC



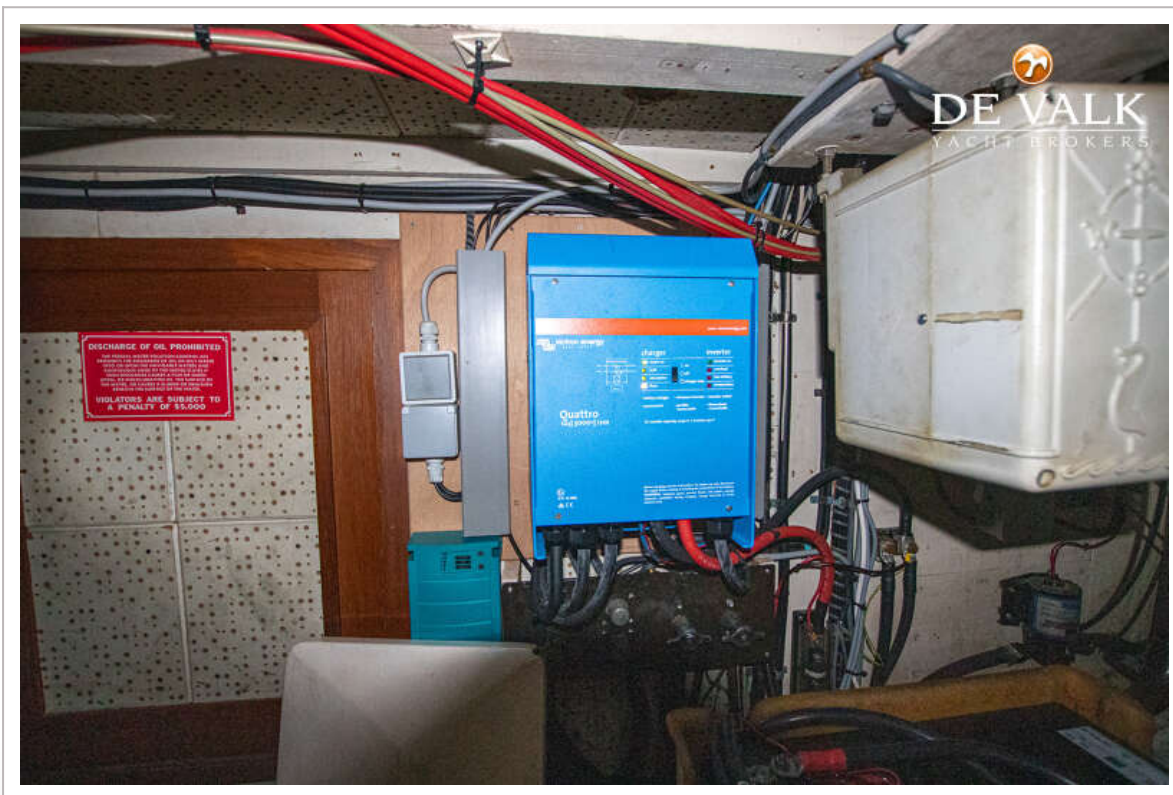
GRAND BANKS 42 CLASSIC



GRAND BANKS 42 CLASSIC



GRAND BANKS 42 CLASSIC



GRAND BANKS 42 CLASSIC

