



DE VALK  
YACHT BROKERS



BAVARIA 31



DE VALK  
YACHT BROKERS

BROKERAGE | CHARTER | BERTHS | FINANCE | INSURANCE | YACHT MANAGEMENT

## BROKER'S COMMENTS

Step aboard the Bavaria 31 Singha, a sailing yacht built in 2001 by German shipyard Bavaria Yachtbau GmbH, this popular cruiser offers the perfect blend of comfort, performance, and practicality, ideal for coastal cruising or weekends away. With two spacious cabins, a comfortable saloon, and bathroom, Singha is perfectly suited for couples, small families, or anyone looking to enjoy time on the water. She is powered by a Volvo Penta engine and features modern navigation equipment for safe and confident sailing, available for viewing in our sales marina in Katwoude – come see her for yourself!

*Reinier van der Wolf*

## SPECIFICATIONS

<b>Dimensions</b>	10.00 x 2.99 x 1.45 (m)	<b>Builder</b>	Bavaria Yachtbau GmbH, Giebelstadt
<b>Built</b>	2001	<b>Cabins</b>	2
<b>Material</b>	GRP	<b>Berths</b>	6
<b>Engine(s)</b>	1 x Volvo Penta MD 2020-DB T diesel	<b>Hp/Kw</b>	20.00 (hp), 14.72 (kw)
<b>Asking price</b>	€ 42.999 (VAT Paid)	<b>Lying</b>	at sales office

## CONTACT

<b>Sales office</b>	De Valk Monnickendam B.V.	<b>Telephone</b>	+31 (0)299 65 63 50
<b>Address</b>	Hoogedijk 6 1145 PM Katwoude NL	<b>E-mail</b>	monnickendam@devalk.nl

## DISCLAIMER

These particulars are given in good faith as supplied but cannot be guaranteed.



## GENERAL

Model	BAVARIA 31
Type	sailing yacht
LOA (m)	10,00
LWL (m)	7,55
Beam (m)	2,99
Draft (m)	1,45
Air draft (m)	14,00
Year built	2001
Builder	Bavaria Yachtbau GmbH, Giebelstadt
Country	Germany
Designer	J&J Design
Displacement (t)	4,4
Ballast (tonnes)	1,1 tonnes
CE norm	A
Hull material	GRP
Hull colour	white
Hull shape	round-bilged
Keel type	fin keel
Superstructure material	GRP
Rubbing strake	aluminum
Deck material	GRP
Deck finish	non-skid moulded in
Superstructure deck finish	non-skid moulded in
Cockpit deck finish	teak
Antifouling (year)	(2025)
Window frame	stainless steel
Window material	tempered glass
Deckhatch	2x
Fuel tank (litre)	polyethylene   90
Level indicator (fuel tank)	Turotest



Freshwater tank (litre)	polyethylene   150
Blackwater tank (litre)	polyethylene   40
Level indicator (blackwater)	Gobius
Blackwater tank extraction	deck extraction + pump
Outside helm position	yes
Emergency tiller	yes

## ACCOMMODATION

Cabins	2
Berths	6
Interior	mahogany
Layout	V-bed in front, saloon, galley, charttable, bathroom, guestcabin, open cockpit.
Floor	teak and holly
Open cockpit	yes
Saloon	yes
Heating	diesel ducted hot air   Webasto
Chart table	yes
Convertible berth	2x in the saloon
Opening door to cockpit	yes
Galley	yes
Countertop	yes
Sink	stainless steel
Cooker	calor gas   Bavaria 2 burner gasstove with oven
Oven	yes
Fridge	Isothemp
Hot water system	220V + engine
Water pressure system	electrical
Owners cabin	v-bed
Wardrobe	hanging and shelves
Bathroom	shared



Toilet	shared   Jabsco
Toilet system	manual
Wash basin	yes
Shower	shared Hand shower
Guest cabin 1	double bed
Wardrobe	shelves
Extra info	The gas system includes a safety shut-off valve
Extra info	The Webasto heater is currently not working, despite having had maintenance done in 2024   The port-side stanchion base (layered) was wobbly where it connects to the hull.

## MACHINERY

No of engines	1
Make	Volvo Penta
Type	MD 2020-DB T
HP	20
kW	14.72
Fuel	diesel
Year installed	2001
Maximum speed (kn)	7
Cruising speed (kn)	5
Engine hours	1322
Engine cooling system	freshwater heat exchanger
Drive	sail-drive
Engine controls	bowden cable
Gearbox	Volvo Penta 120S saildrive
Propeller type	folding
Propeller blades	3
Electric bilge pump	yes
Start battery	1 x Varta 75ah
Service battery	2 x 140 ah
Battery monitor	On the Bavaria swich board



Battery charger	Mobitronic, type: 925-012-D 25a
Inverter	Green cell 12/2000W
Solar panel	3 solar panels with Morningstar RemoteMeter
Shorepower	with cable

## NAVIGATION

Compass	Suunto liquid compass
Depth sounder/log	Raytheon ST60
Windset	yes
VHF	Garmin
Autopilot	Raymarine
Plotter/GPS	Garmin GPSmap 720S
AIS transceiver	Visible on Garmin plotter
EPIRB	McMurdo Smartfind 406

## EQUIPMENT

Sprayhood	yes
Cockpit cover	yes
Bathing platform	yes
Boarding ladder	stainless steel
Transom door	yes
Bow ladder	yes
Deck shower	Warm/cold
Anchor	Galvanized 10 kg
Anchor chain	With chain and rope
Sea railing	wire
Grab rail (superstructure)	stainless steel
Pushpit	yes
Pulpit	yes
Life raft	container   Plastimo Cruiser 6
Life raft (pers)	6



Fenders	yes
Mooring lines	yes
Radio-cd player	LTC
Speakers in salon	yes
Clock - barometer	yes
Extra info	The port-side stanchion base (layered) was wobbly where it connects to the hull.

## RIGGING

Rigging	sloop
Standing rigging	wire   checked-gecontroleerd-Uberpruft (2021)
Brand mast	Seldén
Material mast	aluminium
Spreaders	2 x
Mainsail	(2021)
Stoway mast	In-mast furling
Genoa	Genoa installed at the furler and one spare genoa (need to be cleaned) (2021)
Genoa furler	Seldén Furlex 100 S
Reefing System	main in-mast furling
Boomvang	mechanical and tackle   Seldén Rodkicker
Primary sheet winch	2x Harken 32ST 2 speed power ratio
Secondary sheet winch	2x Harken 16ST 1 speed power ratio







# BAVARIA 31





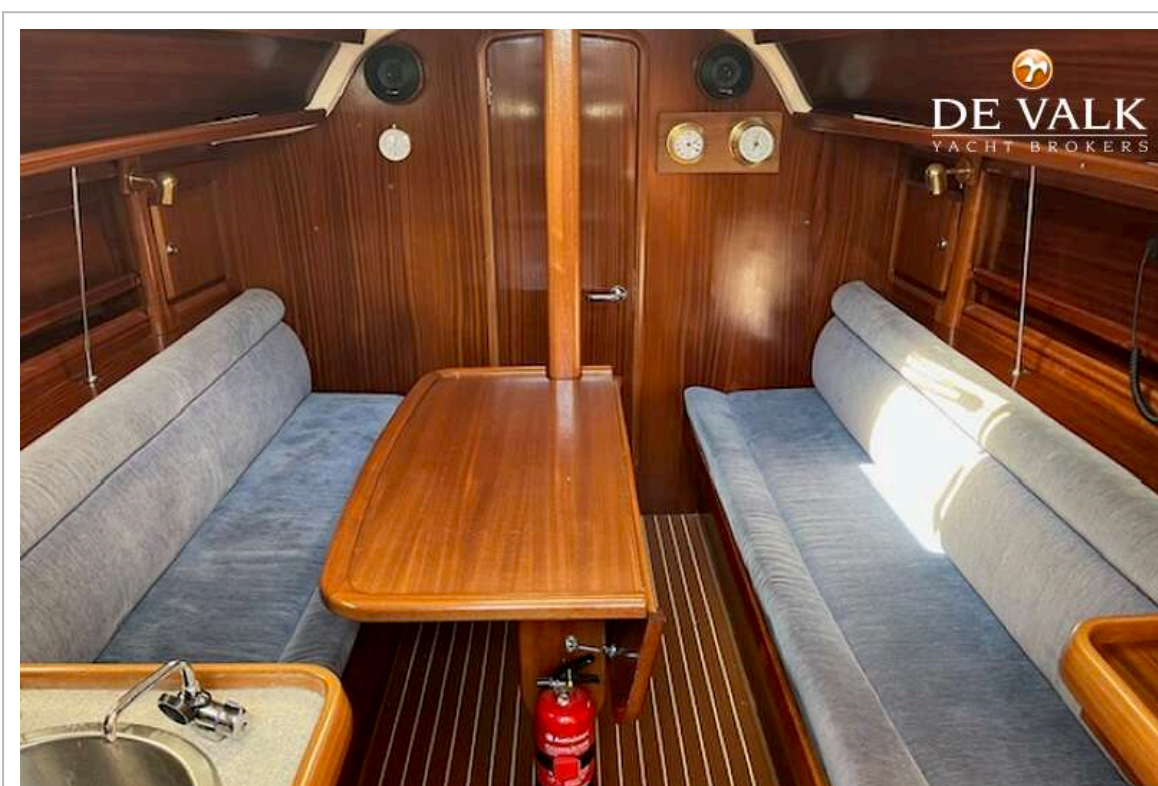


## BAVARIA 31

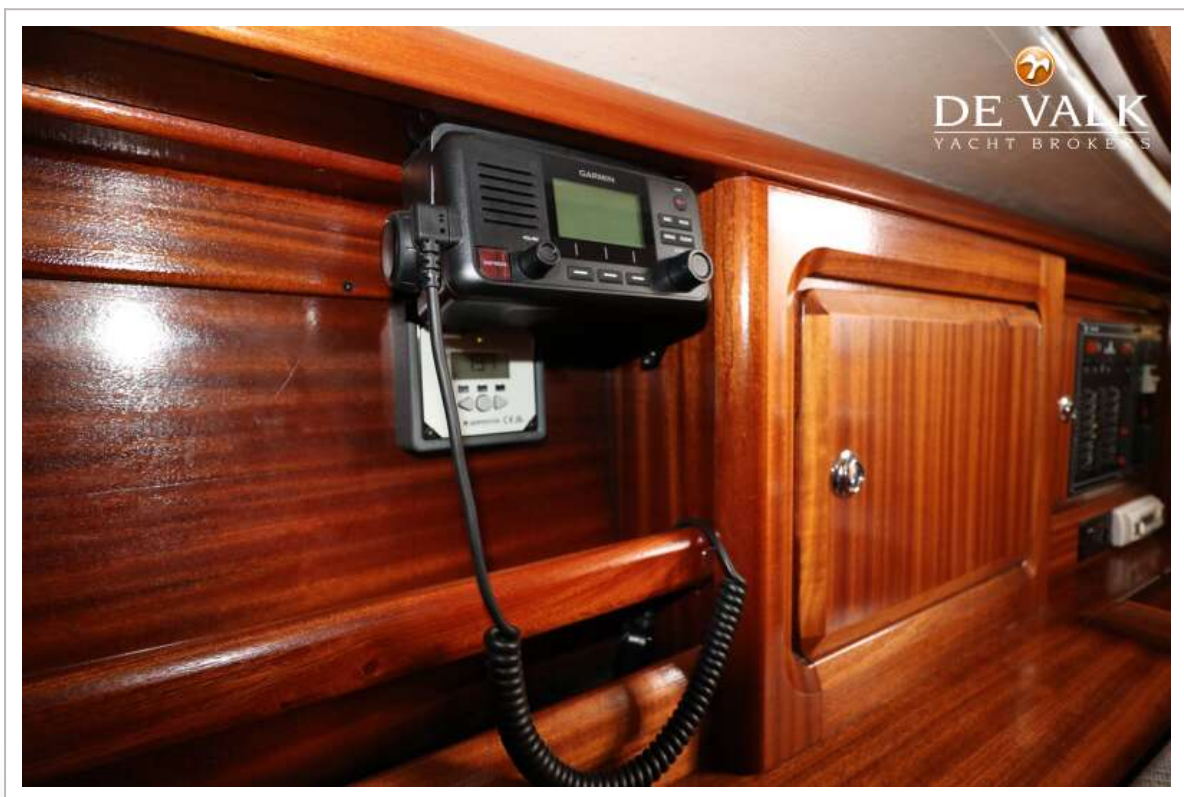
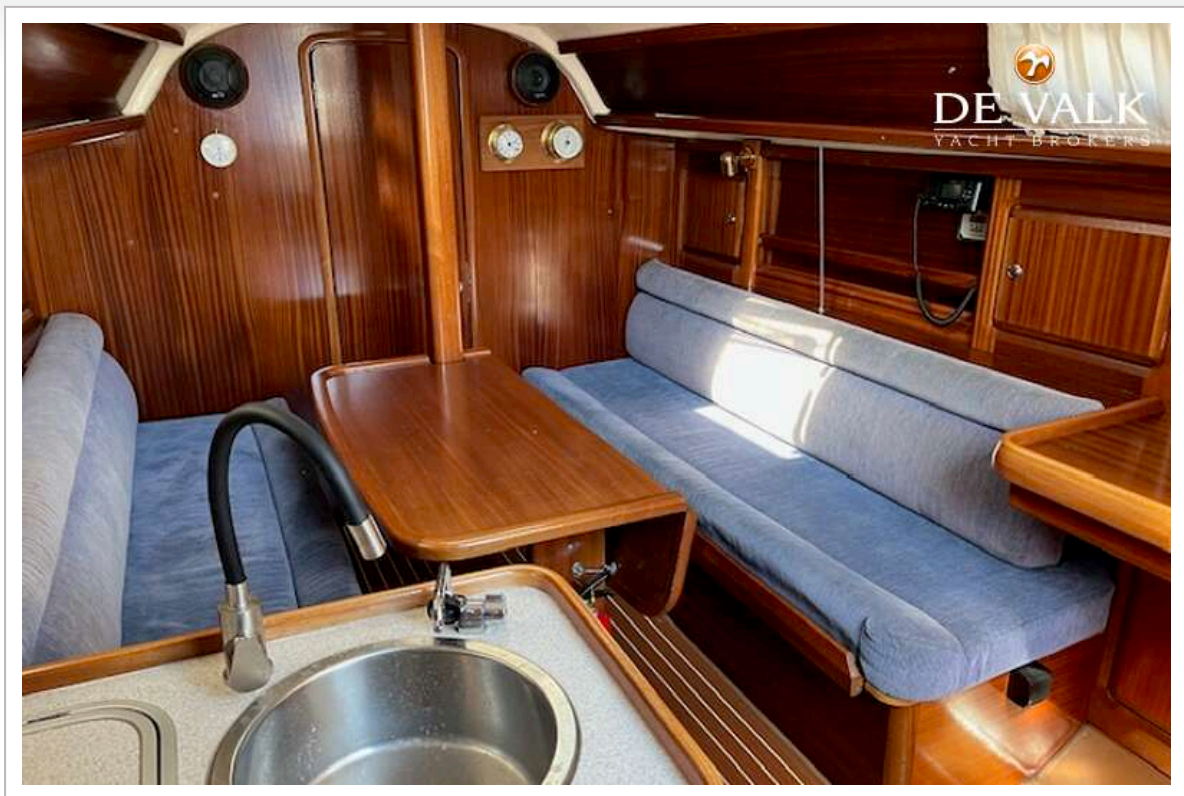




# BAVARIA 31

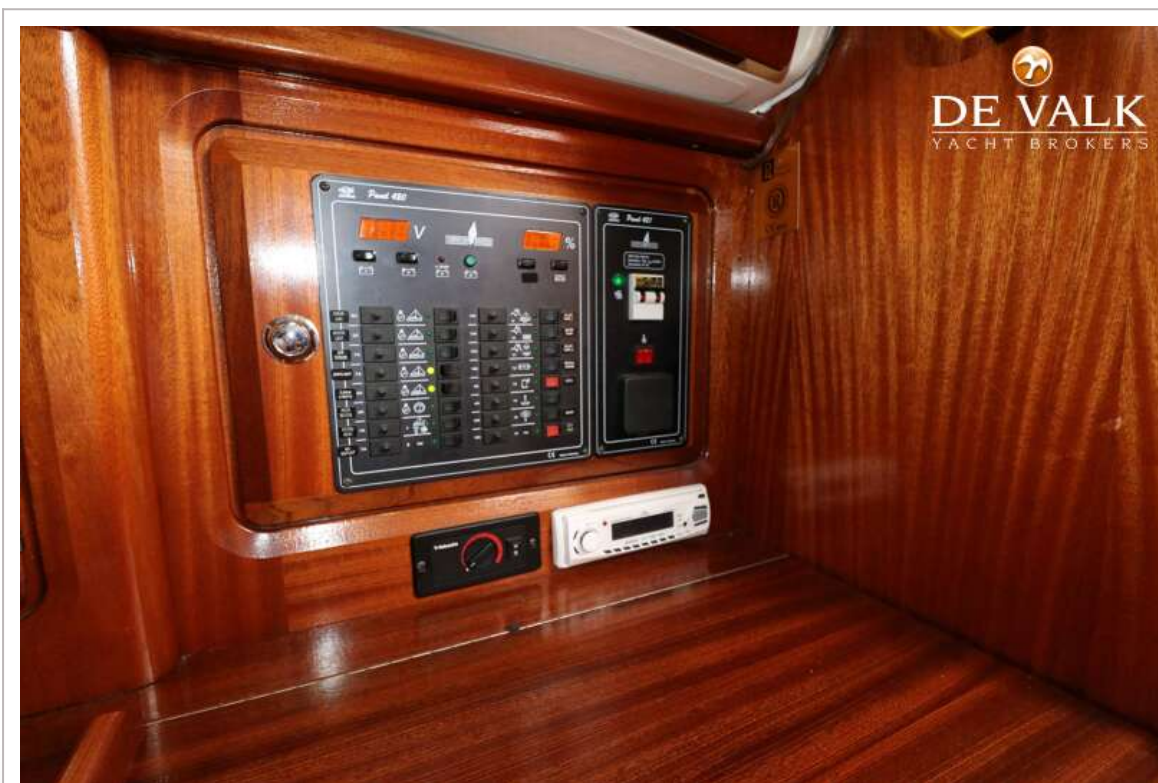


# BAVARIA 31



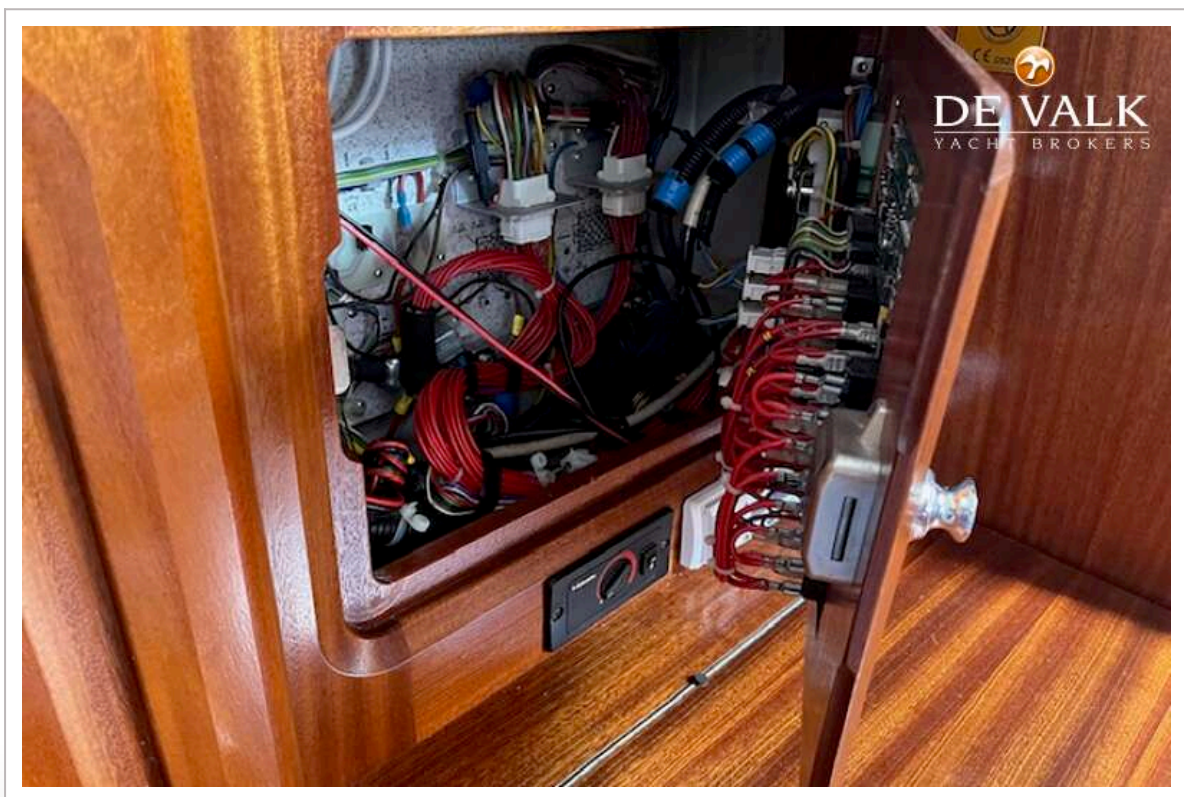
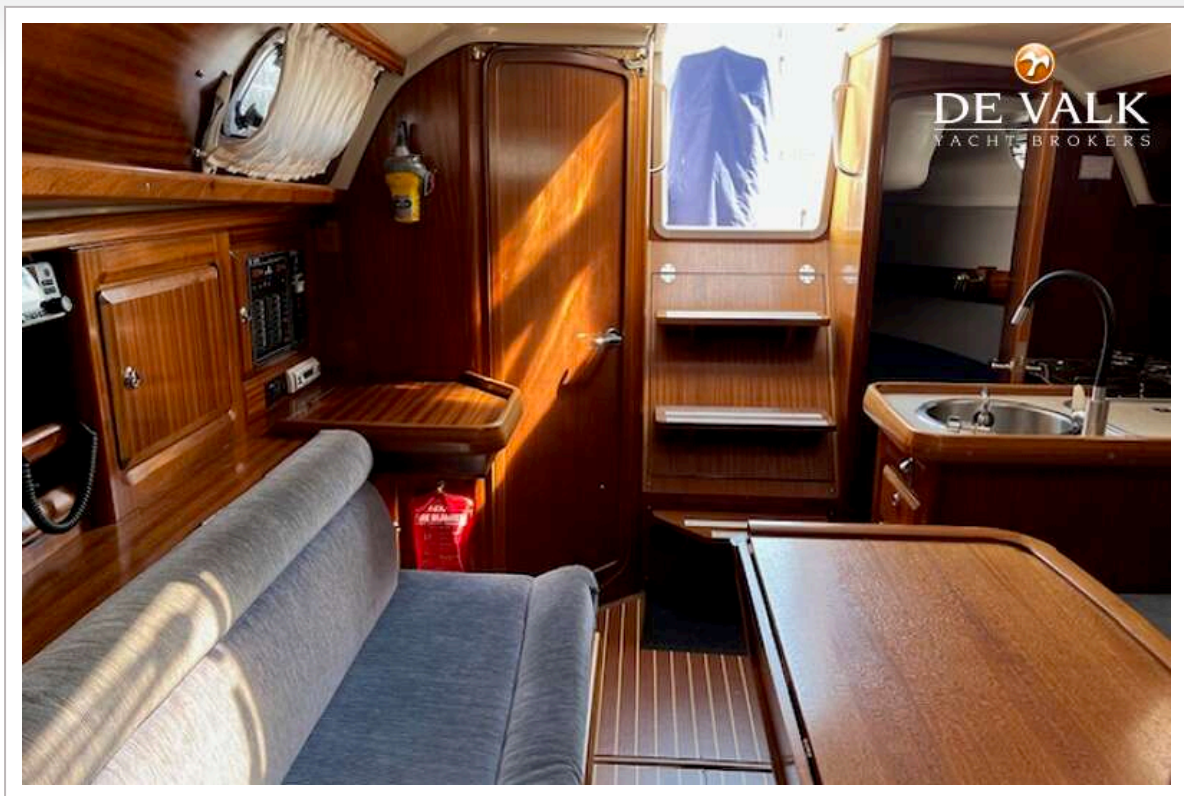


# BAVARIA 31



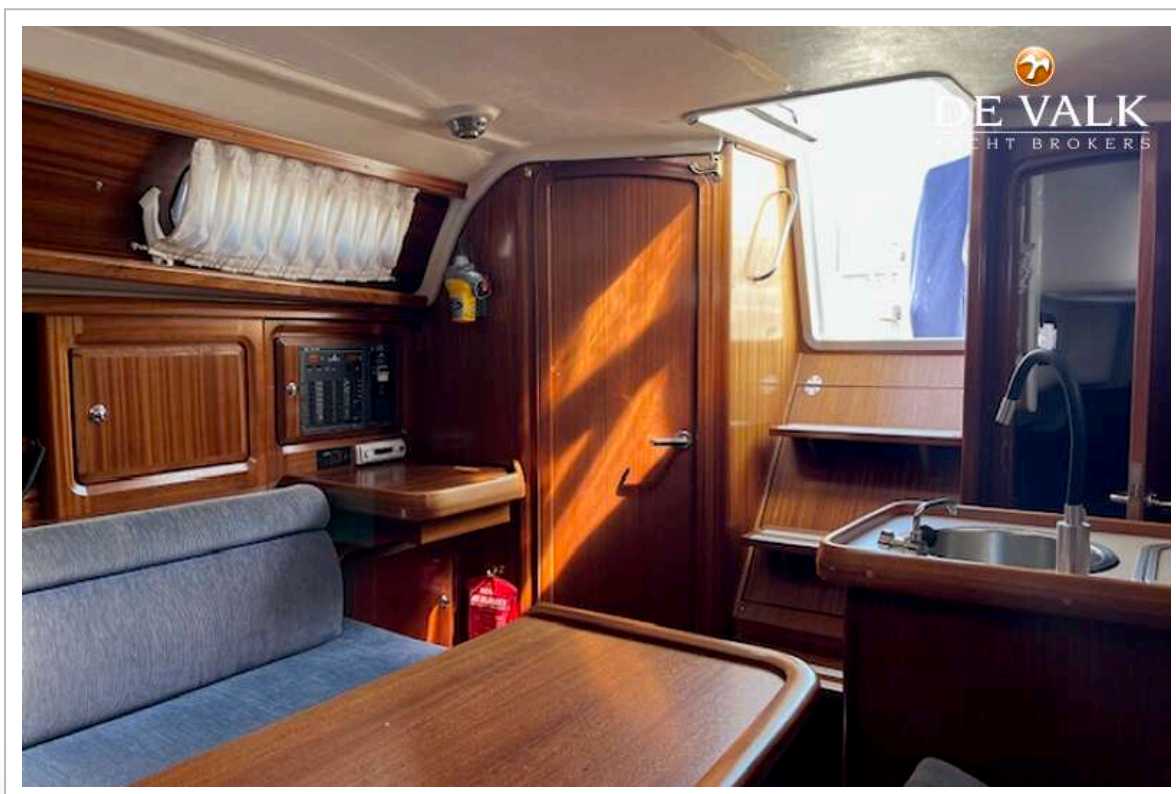
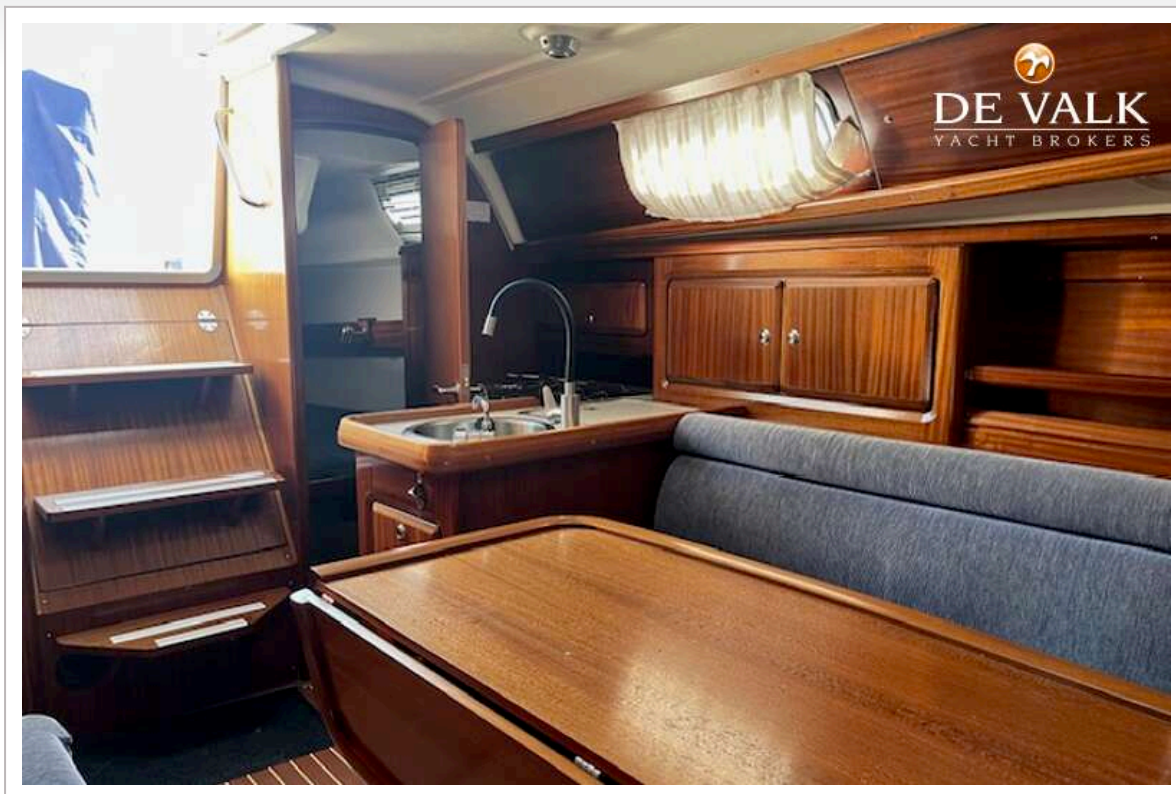


# BAVARIA 31



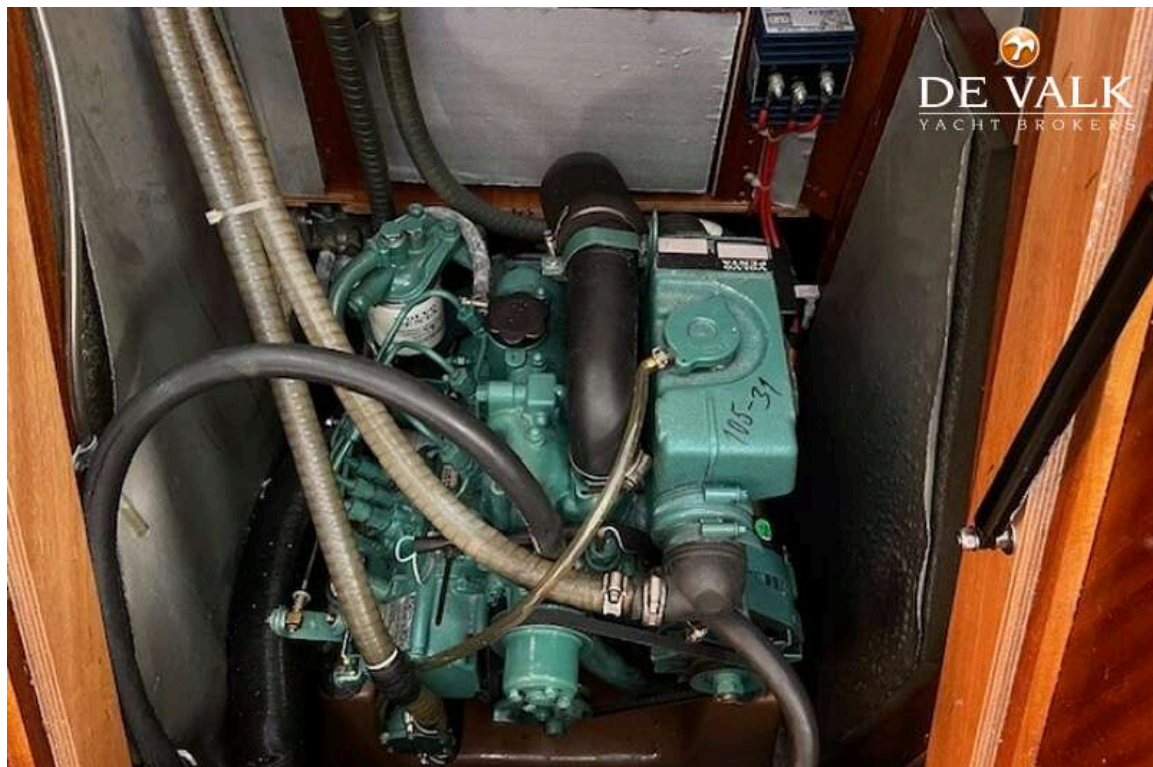


## BAVARIA 31





# BAVARIA 31



# BAVARIA 31







