



DE VALK
YACHT BROKERS



EUROSHIP DEKSALON 1950



DE VALK
YACHT BROKERS

EUROSHIP DEKSALON 1950

BROKER'S COMMENTS

Stylish and robust 19.50-metre motor yacht, built in 2024 by Euroship Services BV. This modern steel yacht offers luxurious comfort with 3 cabins, 6 berths, underfloor heating, air conditioning, and a Webasto sliding roof. Powered by two strong John Deere engines and equipped with solar panels, bow and stern thrusters, advanced navigation systems, and high-quality finishes. Perfect for extended stays and carefree cruising, with a spacious interior and extensive onboard amenities. An ideal blend of elegance, engineering, and ease of use.

Ian Pols

SPECIFICATIONS

Dimensions	19.50 x 4.75 x 1.25 (m)	Builder	Euroship Services BV
Built	2024	Cabins	3
Material	Steel	Berths	6
Engine(s)	2 x John Deere 6068AFM85 diesel	Hp/Kw	2 x 231.00 (hp), 170.02 (kw)
Asking price	€ 1.295.000 (VAT Not paid)	Lying	at sales office

CONTACT

Sales office	De Valk Altena	Telephone	+31 162 727211
Address	Keizersveer 3A 4941 TA Raamsdonksveer NL	E-mail	altena@devalk.nl

DISCLAIMER

These particulars are given in good faith as supplied but cannot be guaranteed.



GENERAL

Model	EUROSHIP DEKSALON 1950
Type	motor yacht
LOA (m)	19,50
LWL (m)	19,20
Beam (m)	4,75
Draft (m)	1,25
Headroom (m)	2,00
Year built	2024
Builder	Euroship Services BV
Country	The Netherlands
CE norm	B
Hull material	steel
Hull colour	grey
Hull shape	multi hard chine
Superstructure material	steel
Rubbing strake	rubber
Deck material	steel
Deck finish	synthetic teak
Superstructure deck finish	non-skid paint
Cockpit deck finish	non-skid paint
Antifouling (year)	2024
Window material	glass
Deckhatch	aluminium 4x Vetus
Portholes	stainless steel
Insulation	foam
Mast can be lowered	electric
Fuel tank (litre)	steel 4100
Level indicator (fuel tank)	Victron
Fuel daytank (litre)	steel 500
Freshwater tank (litre)	polyethylene 3000



Level indicator (freshwater)	Victron
Blackwater tank (litre)	polyethylene 1400
Level indicator (blackwater)	Victron
Blackwater tank extraction	deck extraction + pump
Wheel steering	hydraulic
Inside helm position	yes

ACCOMMODATION

Cabins	3
Berths	6
Floor	woodprint
Open cockpit	yes
Deck saloon	yes
Saloon	yes
Sliding roof	Webasto
Heating	central hot water Kabola KB40 Ecoline
Air-conditioning	reverse cycle airco Webasto BlueCool V-Series 50
Navigation center	yes
Dining room	yes
Sliding door to cockpit	yes
Sliding door to aft deck	yes
Galley	yes
Countertop	corian
Sink	stainless steel
Cooker	electric
Extractor	Siemens
Microwave/oven combi	yes
Fridge	Bosch 2x
Hot water system	on central heating + 50L boiler
Water pressure system	electrical
Dishwasher	Siemens



EUROSHIP DEKSALON 1950

Hot water tap	yes
Owners cabin	yes
Wardrobe	hanging and shelves
Bathroom	en suite
Toilet	en suite
Toilet system	electric
Wash basin	in the bathroom
Shower	en suite
Guest cabin 1	twin single
Wardrobe	hanging and shelves
Bathroom	shared
Toilet	shared
Toilet system	electric
Wash basin	in the bathroom
Shower	shared
Guest cabin 2	twin single
Wardrobe	hanging and shelves
Bathroom	shared
Toilet	shared
Wash basin	in the bathroom
Shower	shared
Washing machine/dryer combi	AEG

MACHINERY

No of engines	2
Make	John Deere
Type	6068AFM85
HP	231
kW	170.02
Fuel	diesel
Year installed	2024



Engine cooling system	hopper cooling Blokland
Drive	shaft
Engine controls	electrical
Gearbox	DMT 90A
Secondary engine	diesel
Engine controls	electrical
Bowthruster	electric Vetus 48V
Sternthruster	electric Vetus 48V
Exhaust	dry
Propeller type	fixed
Propeller shaft material	stainless steel
Shaft lubrication	water
Electric bilge pump	yes
Bilge alarm	yes
Generator	dry exhaust Nanni Si2
Running hours generator	97.6
Start battery	4x Varta 12V 110 Ah
Service battery	8x Victron Lithium 12,8V/200Ah
Generator battery	Varta 12V 63Ah
Bowthruster battery	48-volt battery with charger
Sternthruster battery	48-volt battery with charger
Battery monitor	Victron
Inverter	Phoenix inverter smart 24-3000
Battery charger/inverter	Victron energy quattro 24-8000-200
Solar panel	6x solar, sunpower, 420 wp each
Shorepower	with cable
Insulation transformer	7000w
Stabilizers	Dynamic Marine Systems Magnusmaster 140/1000 4R

NAVIGATION

Compass	Simrad GS25
---------	-------------



Depth sounder/log	DST810
Repeater	Simrad FU80
VHF	2x Simrad RS40
Autopilot	Simrad A2004
Rudder angle indicator	Simrad AC70
GPS	Simrad
Plotter	2x
Wifi antenna	yes
Camera	yes
Navigation lights	yes
Searchlight	1x in de mast 2x in de boeg

EQUIPMENT

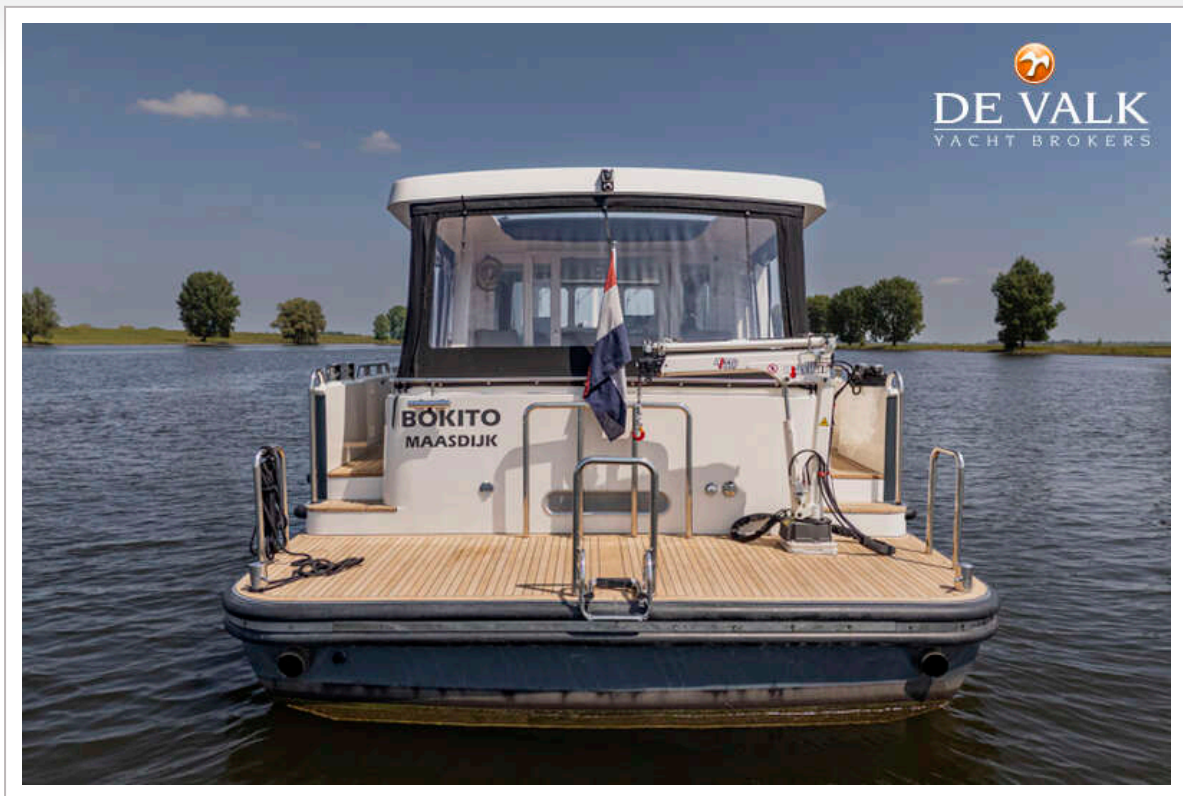
Cockpit cushions	yes
Cockpit table	yes
Bathing platform	yes
Deck crane	hydraulic Maxilift 110
Sea railing	stainless steel
Grab rail (superstructure)	stainless steel
Railing side opening gates	yes
Wiper	yes
Horn	yes
Fenders	yes
Mooring lines	yes
TV	1x salon 1x eigenaarshut
Radio	Fusion MS-RA210
Cockpit speakers	yes
Fire extinguisher	yes
Auto extinguisher system	yes
Extra info	Ankreo spudpalen in voor- en achterschip



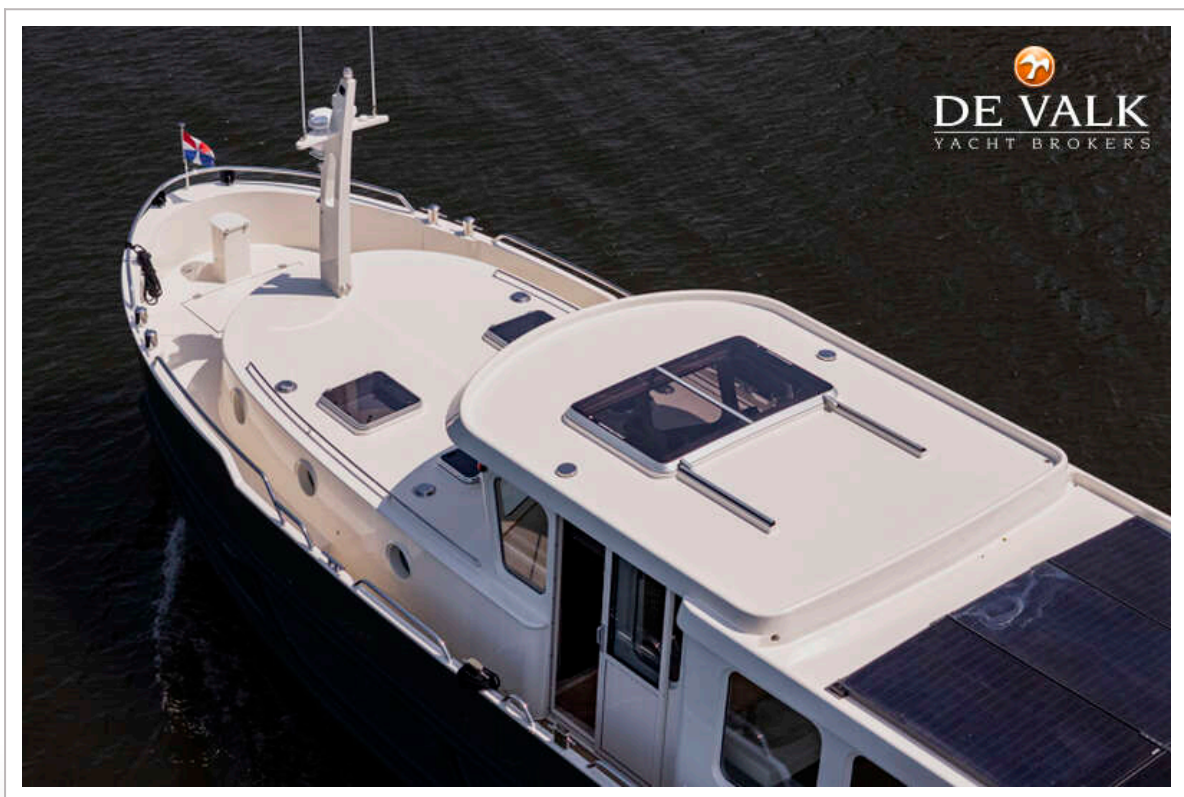
EUROSHIP DEKSALON 1950



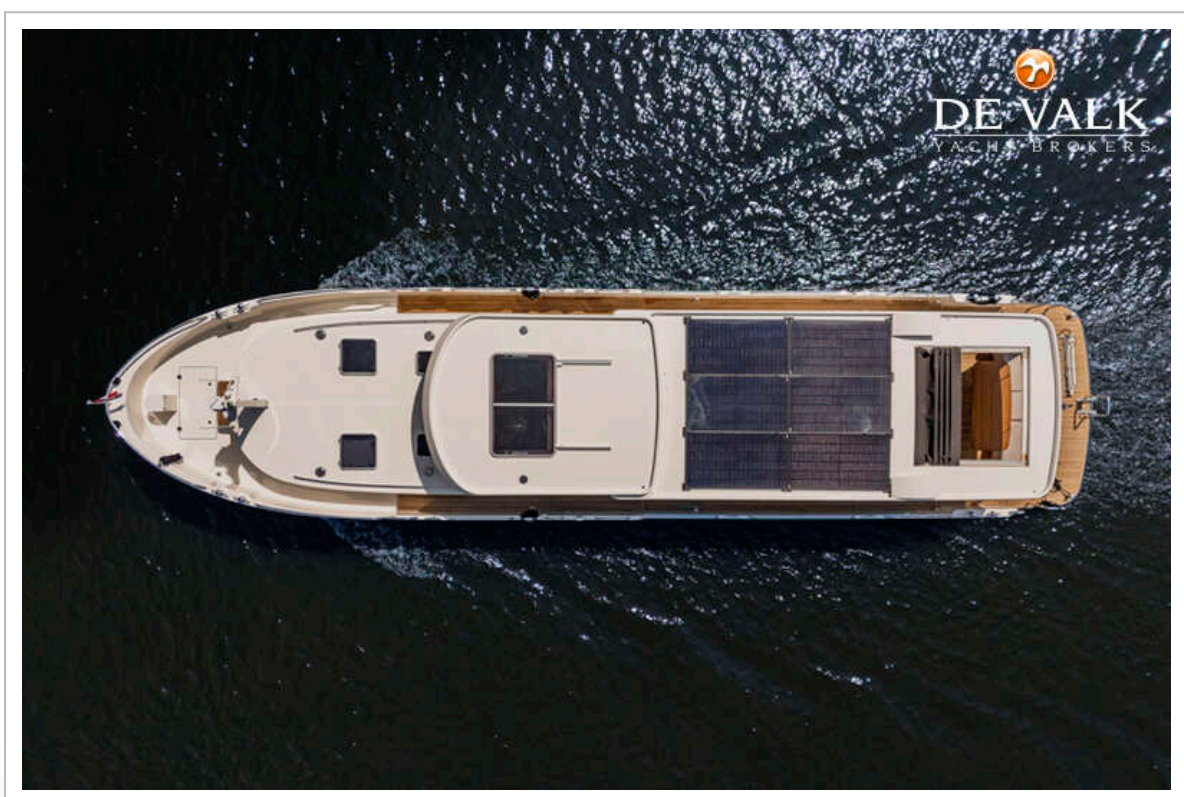
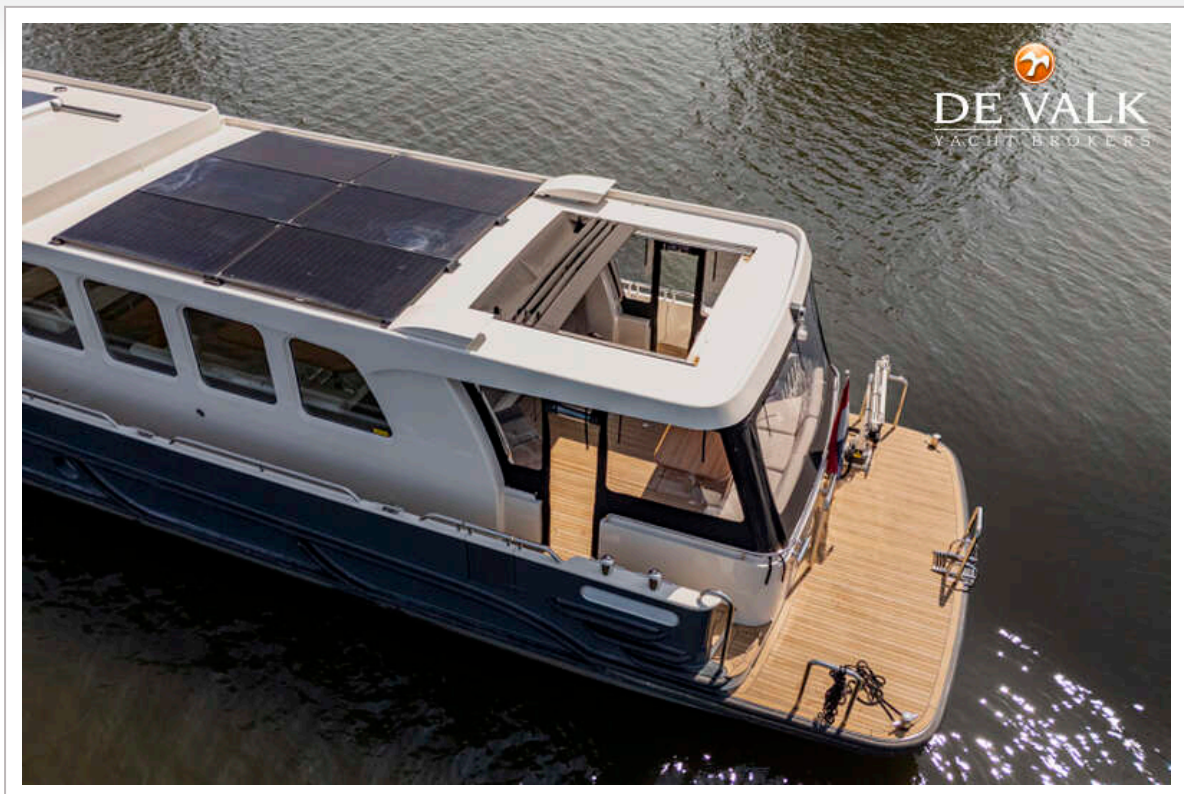
EUROSHIP DEKSALON 1950



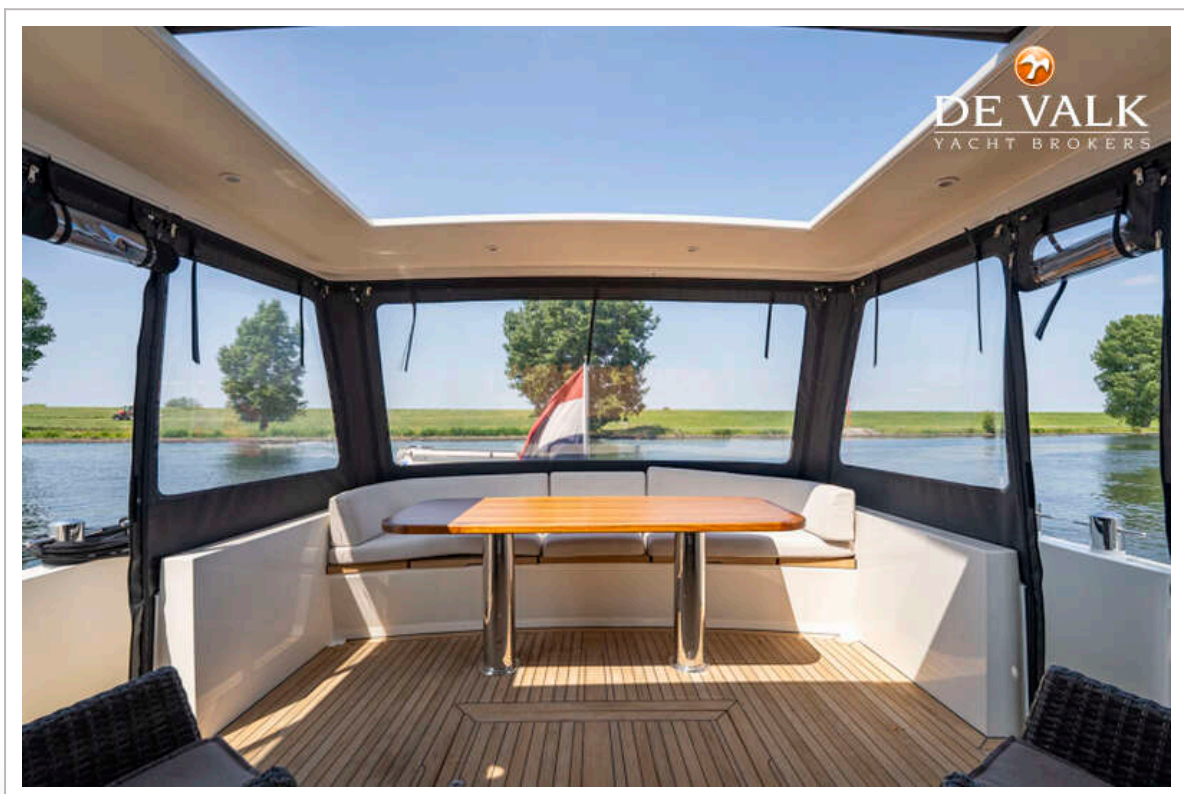
EUROSHIP DEKSALON 1950



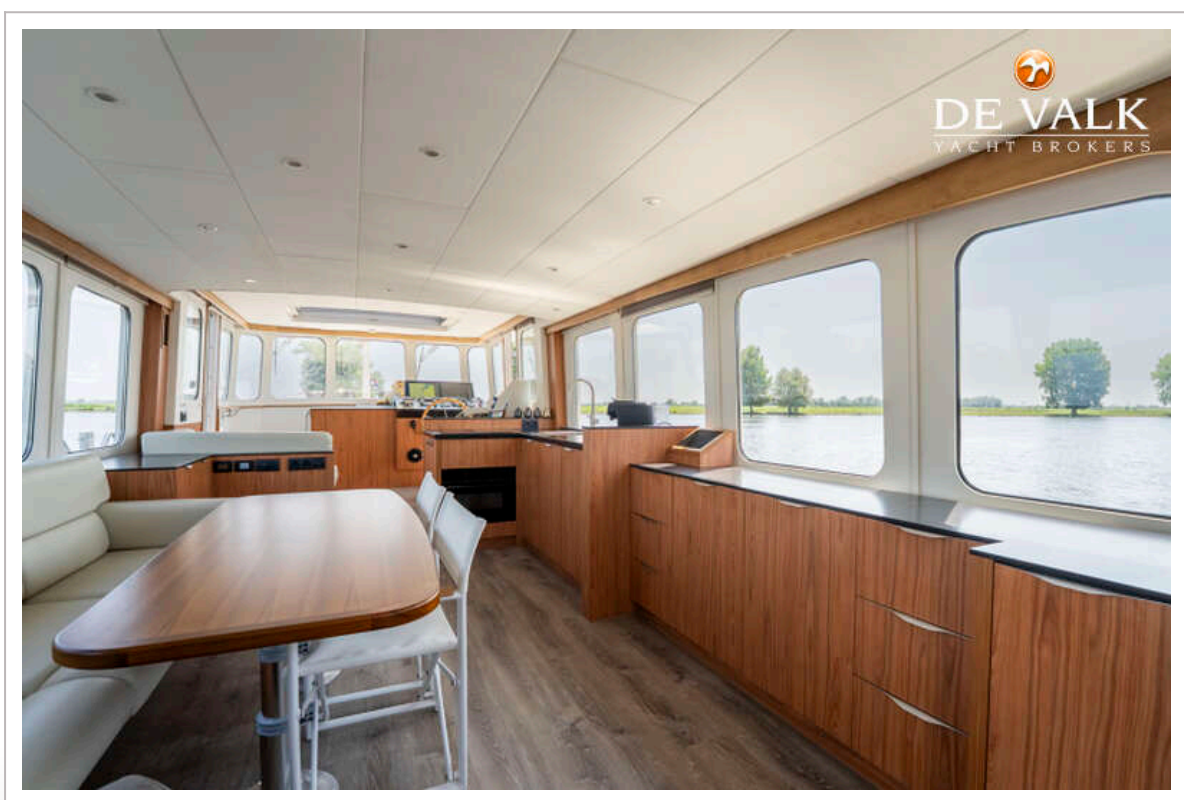
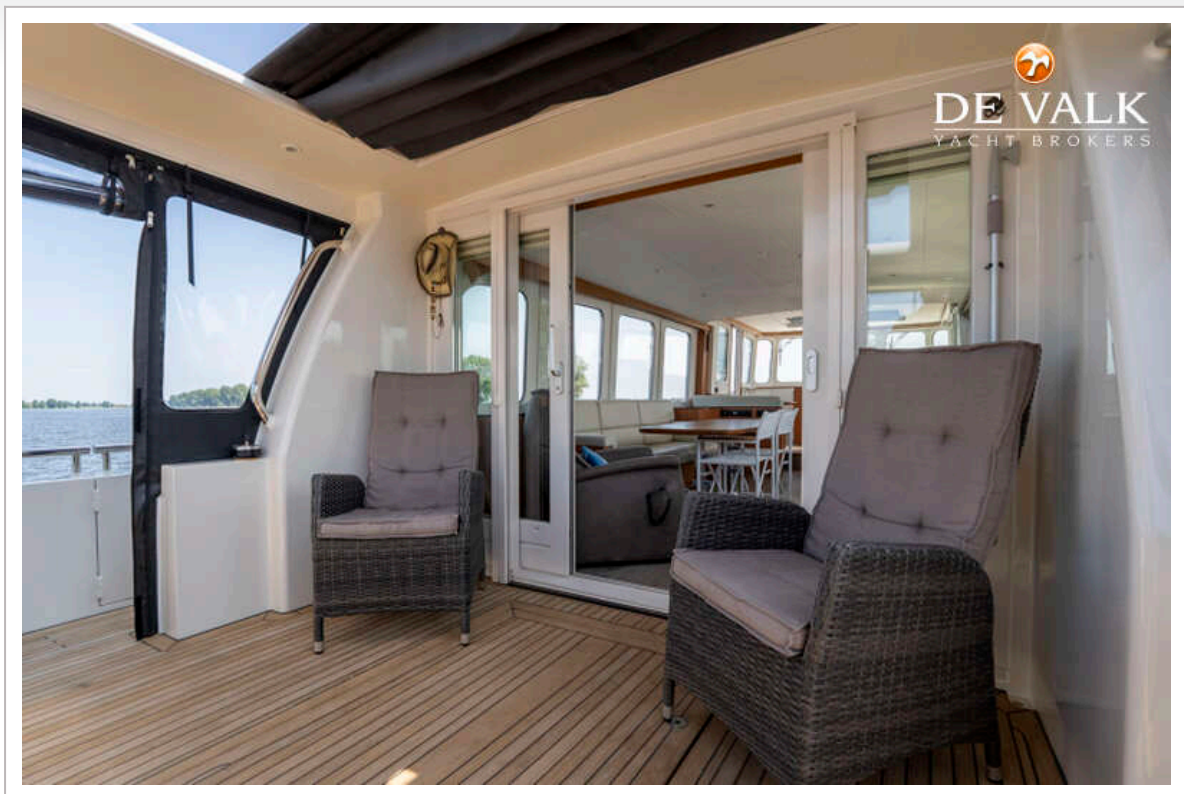
EUROSHIP DEKSALON 1950



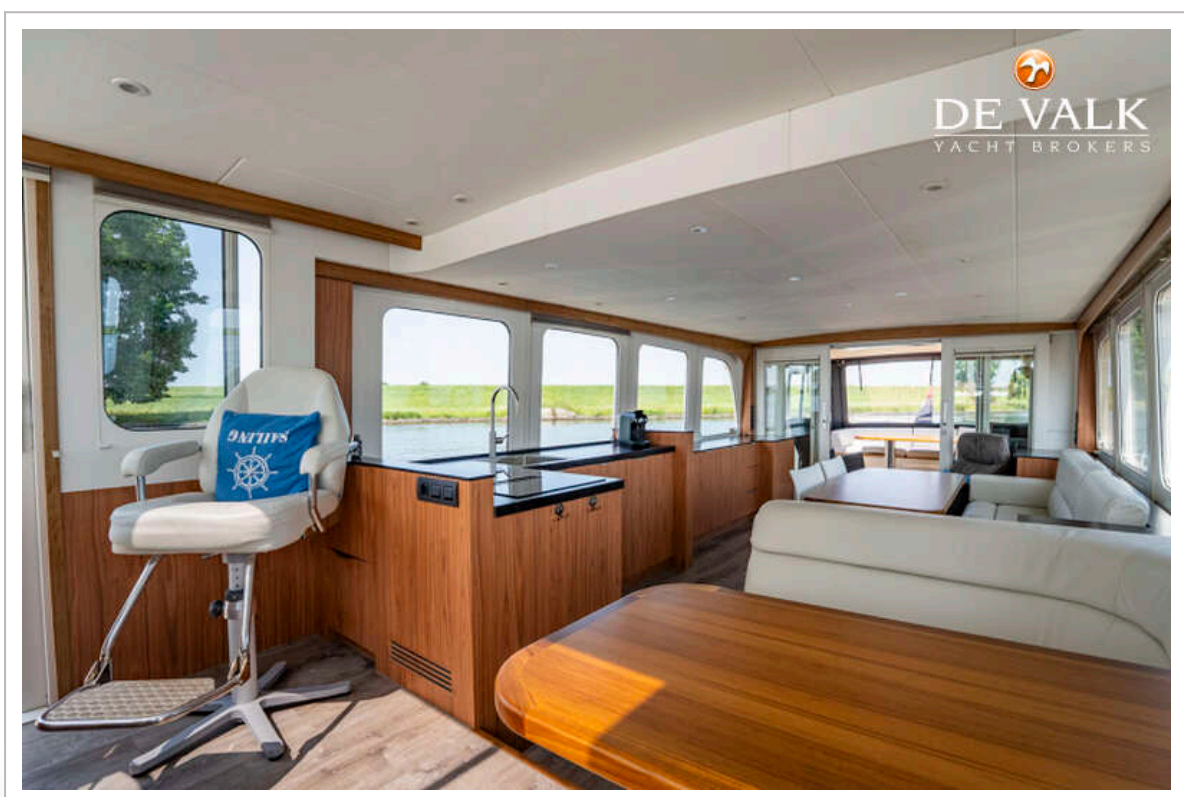
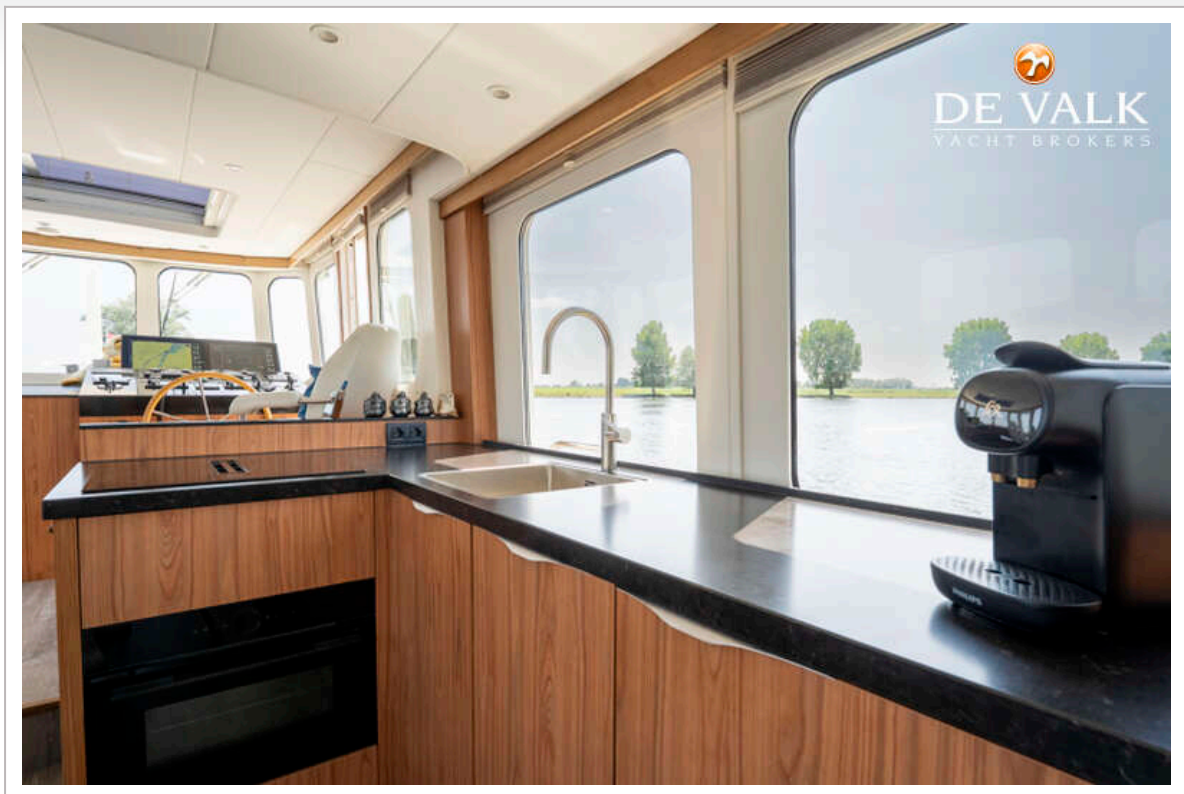
EUROSHIP DEKSALON 1950



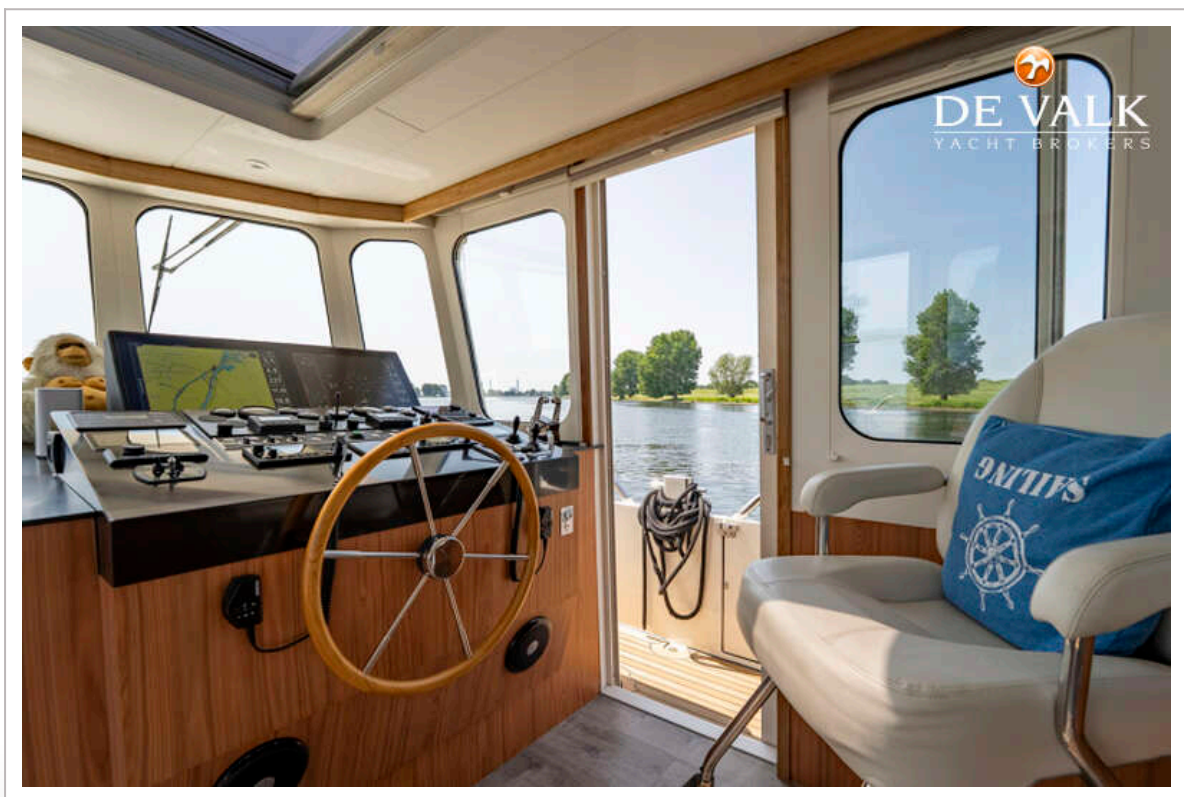
EUROSHIP DEKSALON 1950



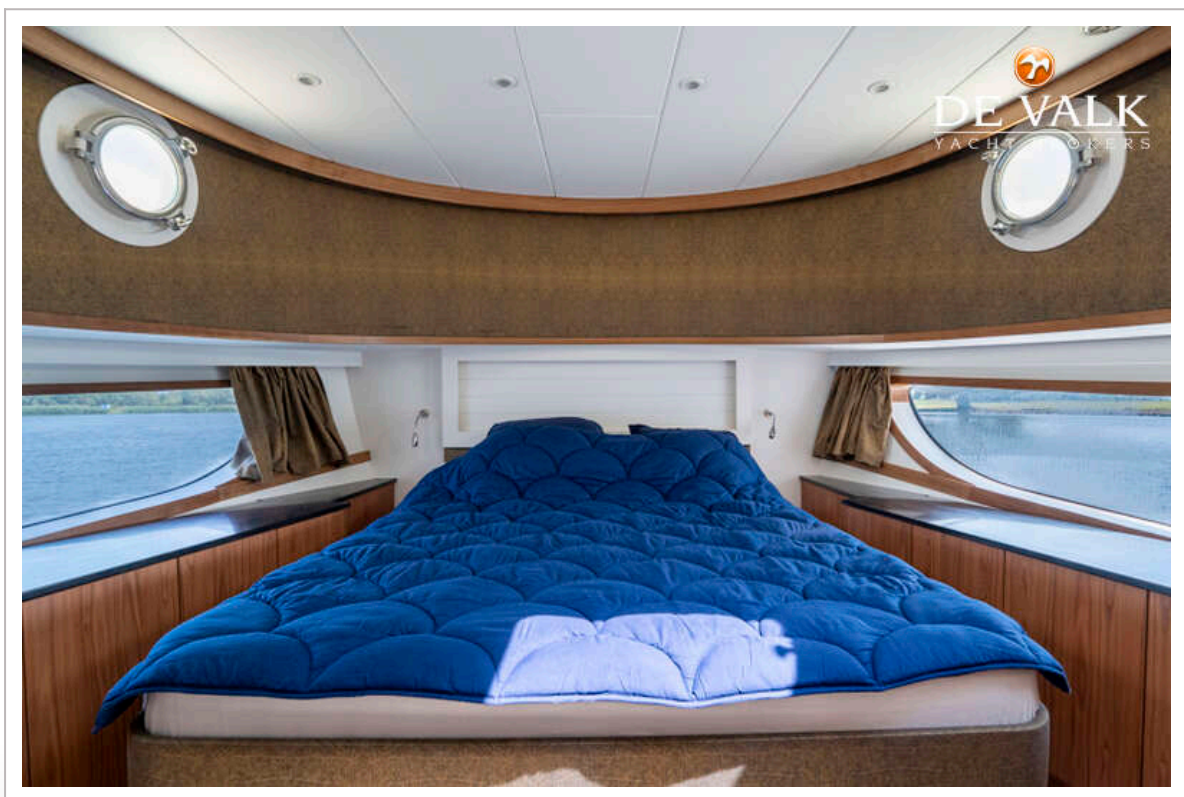
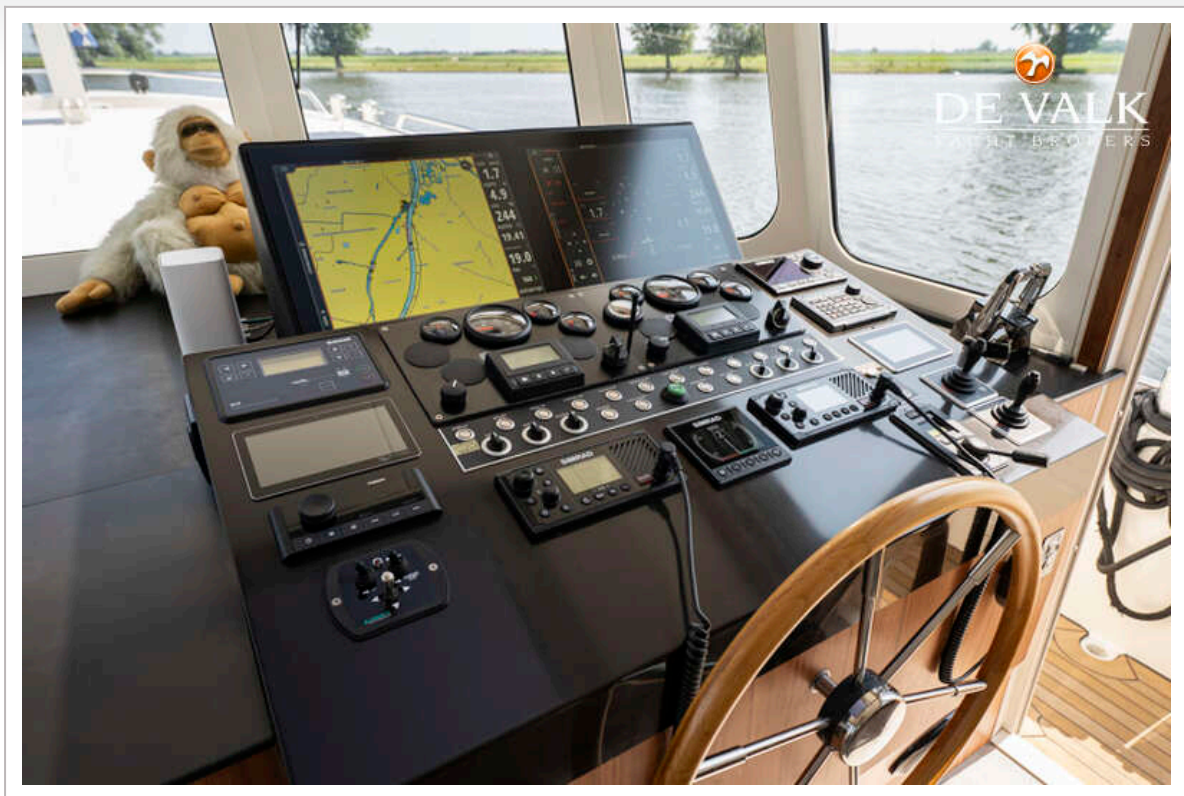
EUROSHIP DEKSALON 1950



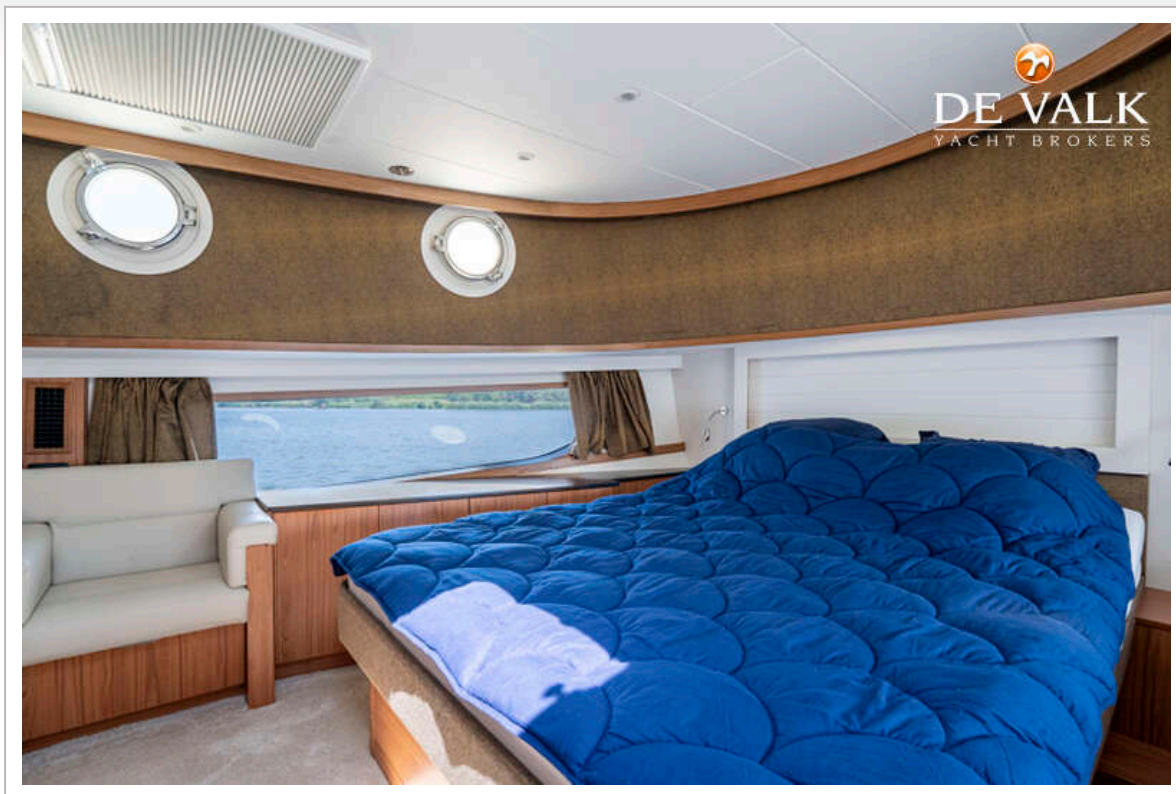
EUROSHIP DEKSALON 1950

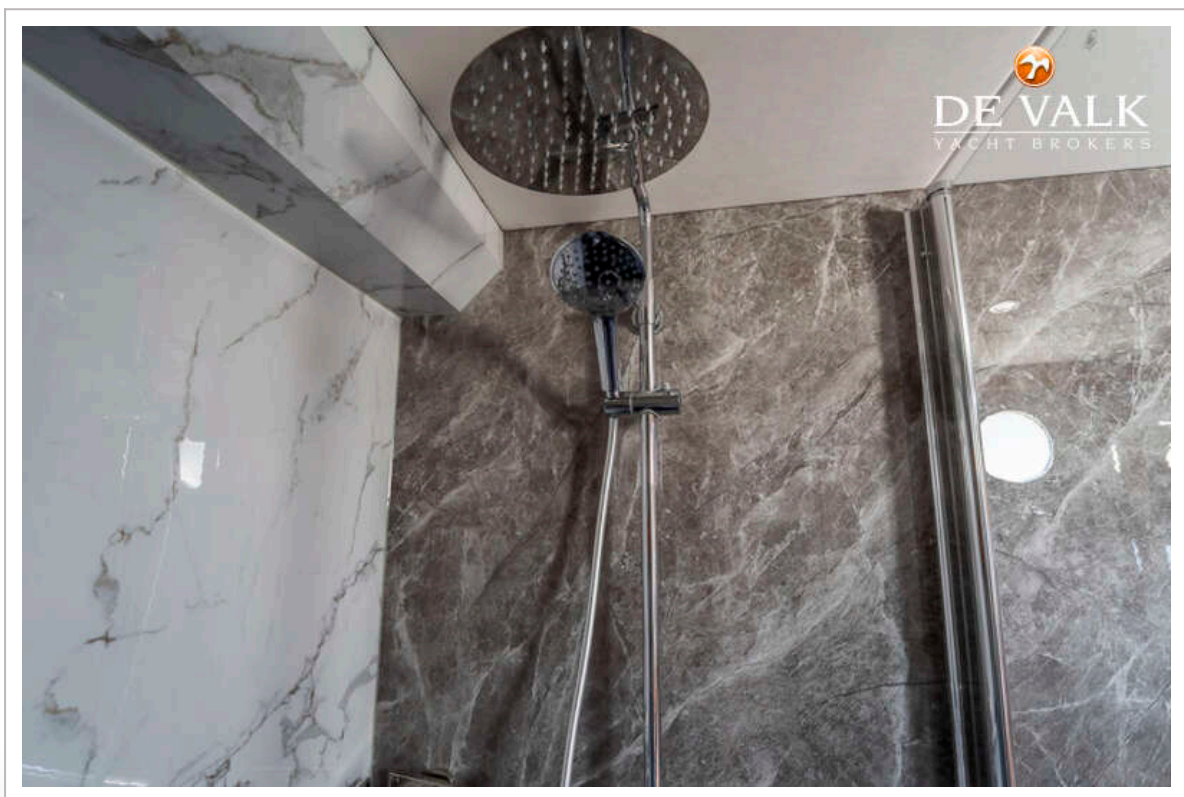
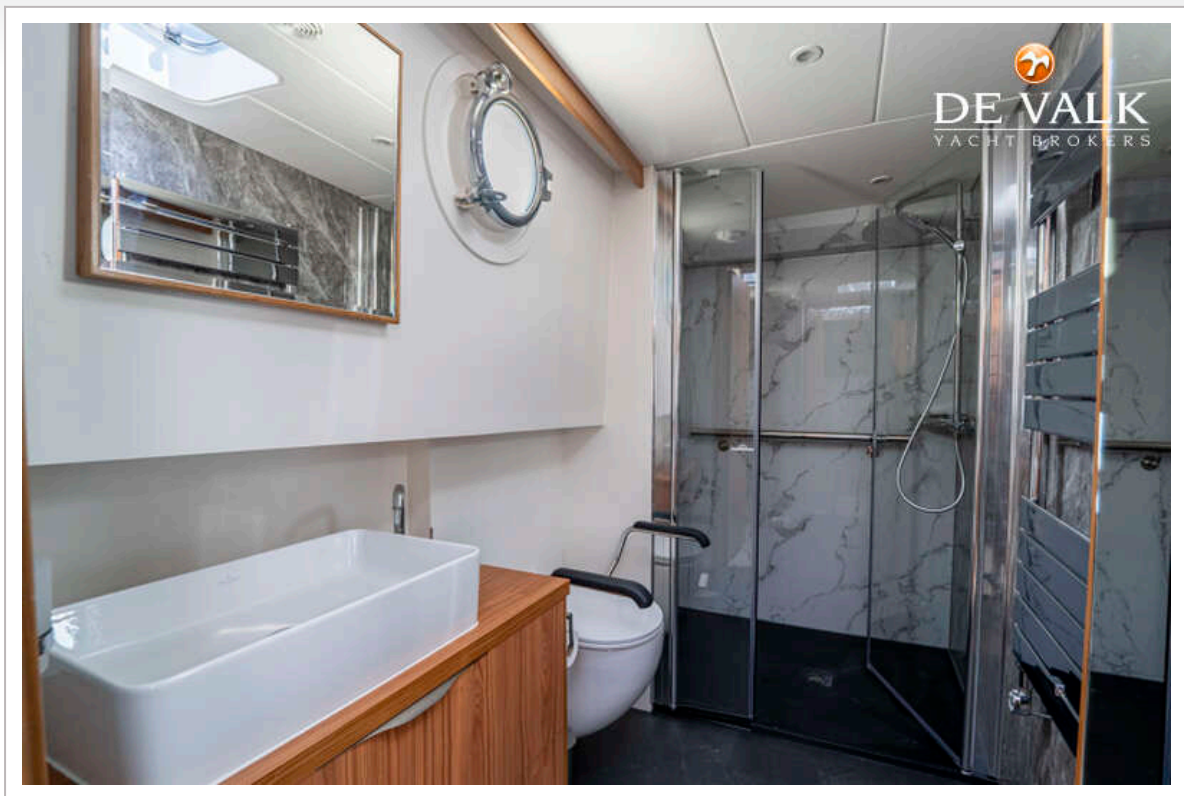


EUROSHIP DEKSALON 1950

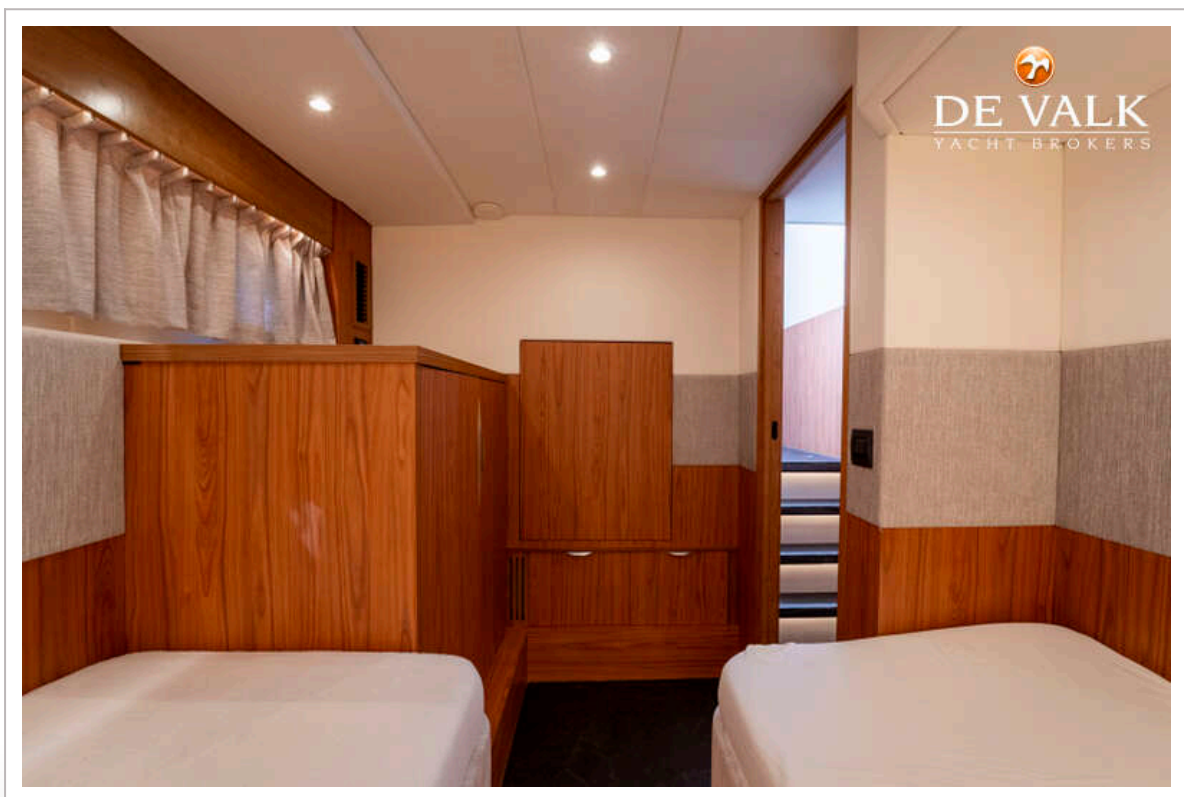
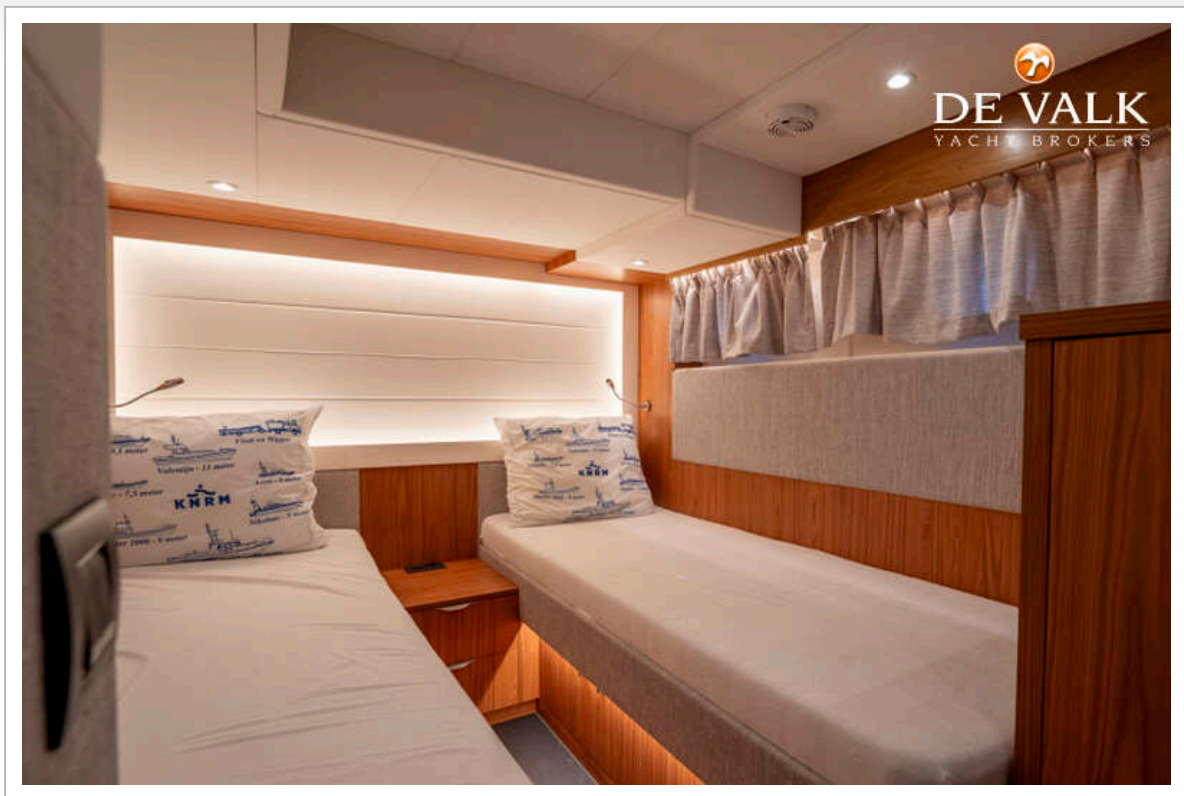


EUROSHIP DEKSALON 1950





EUROSHIP DEKSALON 1950



EUROSHIP DEKSALON 1950

