



BREEHORN 37


DE VALK
YACHT BROKERS

BROKER'S COMMENTS

The Breehorn 37 is known for its robust sailing characteristics and elegant lines. This two owner example is well equipped and neatly maintained. The Breehorn 37 'SVALAN' can be viewed at De Valk Zeeland.

Nick Lanting

SPECIFICATIONS

Dimensions	11.20 x 3.54 x 1.90 (m)	Builder	Piet Keizer (kasko Breehorn)
Built	2009	Cabins	2
Material	GRP	Berths	6
Engine(s)	1 x Yanmar 3JH4E diesel	Hp/Kw	39.00 (hp), 28.70 (kw)
Asking price	€ 149.000 (VAT Paid)	Lying	at sales office

CONTACT

Sales office	De Valk Sint Annaland B.V.	Telephone	+31 (0)166 601 000
Address	Koelhuisweg 4 4697 RM Sint Annaland NL	E-mail	sintannaland@devalk.nl

DISCLAIMER

These particulars are given in good faith as supplied but cannot be guaranteed.



GENERAL

Model	BREEHORN 37
Type	sailing yacht
LOA (m)	11,20
LWL (m)	9,05
Beam (m)	3,54
Draft (m)	1,90
Air draft (m)	16,85
Headroom (m)	1,95
Year built	2009
Builder	Piet Keizer (kasko Breehorn)
Country	The Netherlands
Designer	Dick Koopmans Senior
Displacement (t)	7,8
Ballast (tonnes)	lead in GRP 3,25
CE norm	A
Hull material	GRP
Hull colour	blue
Hull shape	round-bilged
Keel type	fin keel
Superstructure material	GRP
Rubbing strake	wood Teak with stainless steel
Deck material	GRP
Deck finish	teak
Superstructure deck finish	teak
Cockpit deck finish	teak
Antifouling (year)	2025-05
Deckhatch	3 x Lewmar, with blue covers
Portholes	aluminium With flyscreens
Fuel tank (litre)	stainless steel 210
Level indicator (fuel tank)	yes



Fuel daytank (litre)	yes
Freshwater tank (litre)	stainless steel 200 (in two tanks)
Blackwater tank (litre)	stainless steel 50
Blackwater tank extraction	deck extraction + uw line
Tiller	Teak with Spinlock extension
More info on hull	Sandwich constructed above the waterline with PVC foam of 20 mm
More info on paintwork	Hull sanded back to gelcoat, repainted 2024
Extra info	Hull strengthened around bow thruster, skeg, rudder 2024
Extra info	6 x aluminium mooring cleats
Extra info	Hull was supplied by Breehorn and boat was further self built.

ACCOMMODATION

Cabins	2
Berths	6
Interior	teak
Floor	teak and holly
Saloon	U-shaped sofa to port, blue upholstery and curtains
Headroom saloon (m)	1,75 - 1,93
Heating	diesel ducted hot air Webasto Airtop 2000 ST (needs servicing)
Navigation center	To starboard
Chart table	With 12 V socket
Aft Cabin	1 x
Dinette to convert into berth	yes
Galley	U-shaped to port, headroom 1,92m
Countertop	plastic
Sink	stainless steel 2 x
Cooker	calor gas ENO, 3 burner
Oven	ENO, calor gas
Gas alarm	yes
Fridge	Toploader, Isotherm cold plate



Hot water system	220V + engine Isotemp calorifier 25 liter
Water pressure system	electrical Flojet water pump (2025)
Crockery	yes
Owners cabin	v-bed Forward, headroom 1,66m
Bed length (m)	2,05 x 1,60
Wardrobe	hanging/drawers/shelves
Bathroom	separate Headroom 1,84m
Toilet	shared In bathroom
Toilet system	manual Jabsco (2022)
Wash basin	in the bathroom
Shower	In bathroom
Guest cabin 1	double bed Aft, headroom 1,80m
Bed length (m)	2,00 x 1,60
Wardrobe	shelves

MACHINERY

No of engines	1
Make	Yanmar
Type	3JH4E
HP	39
kW	28.70
Fuel	diesel
Year installed	2009
Maximum speed (kn)	7
Cruising speed (kn)	6
Consumption (l/hr)	3,5
Engine hours	1584
Engine cooling system	freshwater heat exchanger
Drive	sail-drive
Saildrive seal	2022
Engine controls	bowden cable



Bowthruster	electric Vetus 55 kgf
Exhaust	watercooled
Propeller type	folding
Manual bilge pump	yes
Electric bilge pump	yes
Electrical installation	12 V + 230 V
Batteries	yes
Start battery	1 x (2023-01)
Service battery	3 x AGM + 1 x Lithium extension battery 2022
Battery monitor	Victron Phoenix MultiControl
Battery charger/inverter	Victron MultiPlus Compact 12/1600/70
Solar panel	1 x fixed, 1 x removable, both from 2024
Diode battery combiners	yes
Shorepower	with cable
Insulation transformer	2023
Extra info	Victron Smart Solar MPPT 75/15 charge controller

NAVIGATION

Compass	Plastomo (2022)
Depth sounder/log	Raymarine ST70
Windset	Raymarine ST60+
VHF	Raymarine Ray 55E
VHF handheld	yes
Autopilot	Raymarine, PC Nautic Tiller Drive
Wind vane steering install.	Pacific Windpilot (2024)
Radar	Raymarine (2022)
Plotter/GPS	Raymarine Axiom+ 9RV (2022)
Electronis chart(s)	2023
AIS transceiver	Raymarine AIS700 Class B (2023)
Navigation lights	yes
Extra info	Raymarine ACU-100 actuator control unit (2023)



Extra info

230 V sockets at chart table, galley, bathroom

EQUIPMENT

Sprayhood	Dark blue
Bimini	White - with zippable side panels with windows
Cockpit table	Teak, hanging in front of the pedestal
Boarding ladder	stainless steel
Bow ladder	Stainless steel
Deck shower	In cockpit
Anchor	Bruce
Anchor chain	45 meter chain + 20 meter rope
Anchor 2	Fortress Aluminium
Anchor chain	Rope
Windlass	electrical Vetus, with Quick remote at bow
Dinghy	inflatable Arimar
Outboard	Minn Kota Endura C2 (electric)
Sea railing	stainless steel Double wired
Grab rail (superstructure)	teak
Pushpit	Stainless steel
Pulpit	Stainless steel
Life raft	valise (or bag) Plastimo
Life raft (pers)	6
Last life raft survey	2022-08
Lifebuoy	yes
Safety lines on deck	yes
Horn	air pressure Hand held
Radar reflector	yes
Fenders	yes
Mooring lines	yes
Spare parts	yes
Radio-cd player	JVC



Speakers in salon	JVC 2 x
Clock - barometer	Cap Horizon
Fire extinguisher	2022-08
Extra info	230 V socket in port stern cockpit locker

RIGGING

Rigging	sloop
Standing rigging	wire Hasselfors tensioner pipes at head stays
Brand mast	Seldén
Material mast	aluminium
Spreaders	2 pairs
Mainsail	Elvstrom 2024
Mainsail cover	Elvstrom 2024 (dark blue), lazy bag + lazy jacks
Battcars	Elvstrom 2024
Fully battened mainsail	yes
Jib	2024
Genoa	2019. Serviced and cleaned, new dark blue UV strip 2025
Genoa furler	Furlex 300S
A-symetric spi	Original but never used, with sock and bag
Staysail	Cutter sail with hooks
Removable innerforestay	yes
Reefing System	quick-one-line-reefing Reefing lines 2024
Backstay adjuster	mechanical Seldén
Boomvang	mechanical Rodkicker
Genoa sheetwinches	2 x Andersen 52ST
Halyard winches	2 x Andersen 40ST & 2x Antal XT40
Winchcovers	4 x (blue)
Spi-pole	carbon With a blue cover



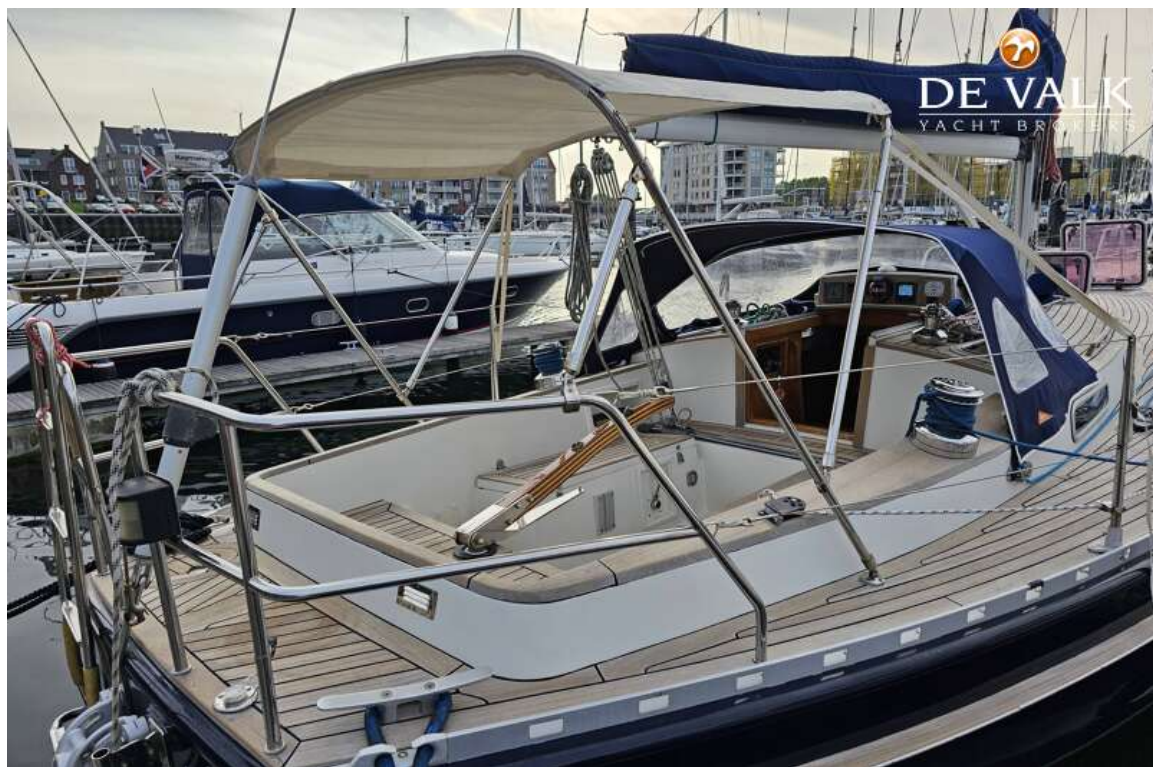
BREEHORN 37







BREEHORN 37



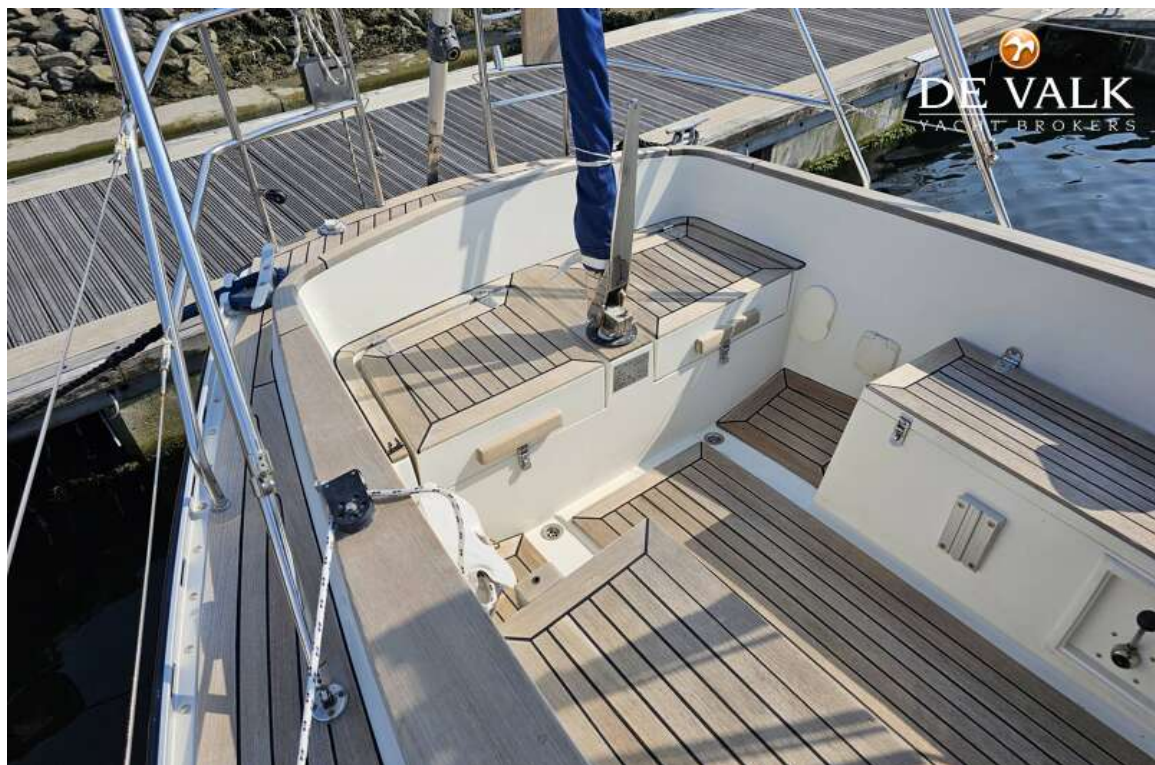
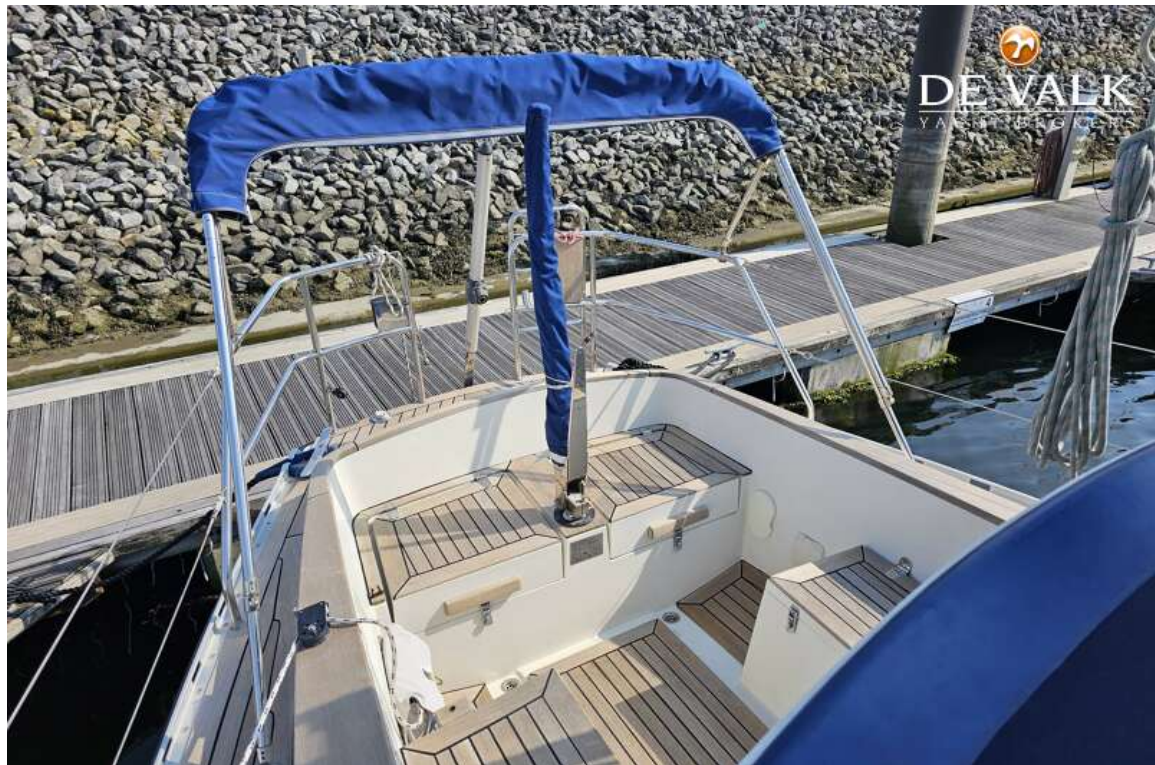
BREEHORN 37



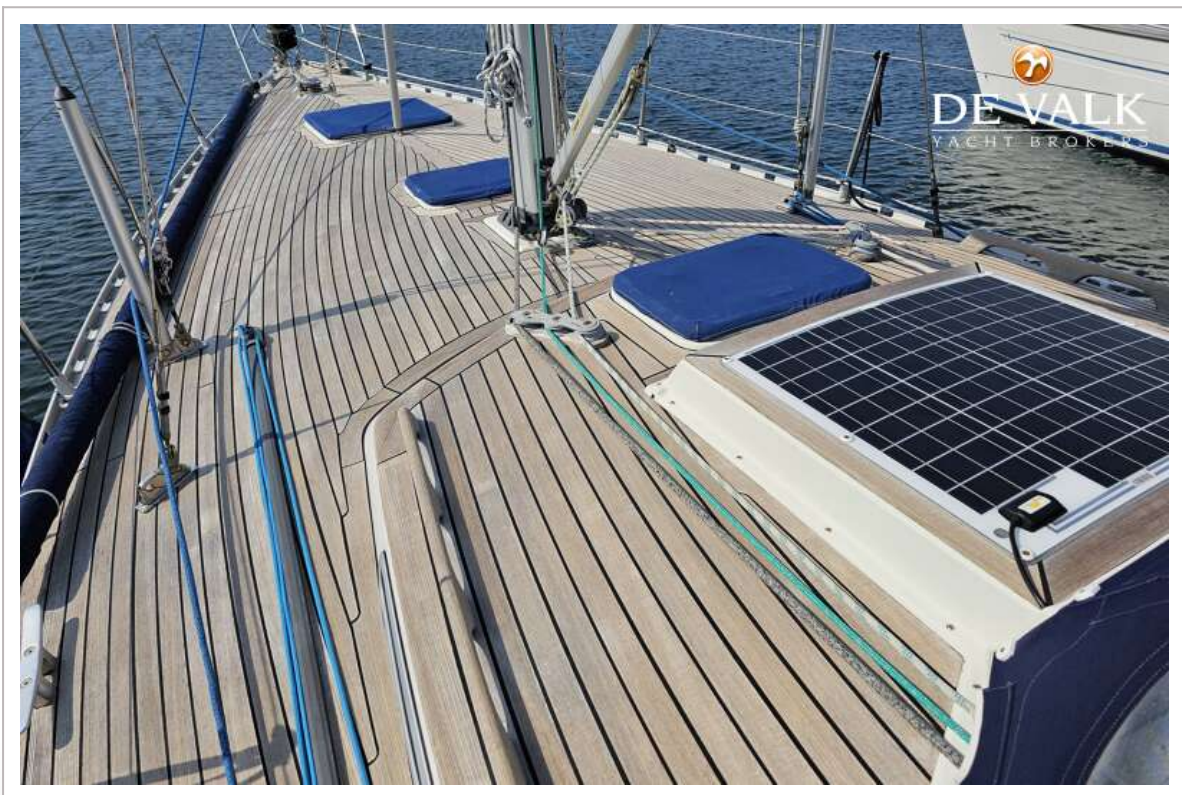
BREEHORN 37



BREEHORN 37



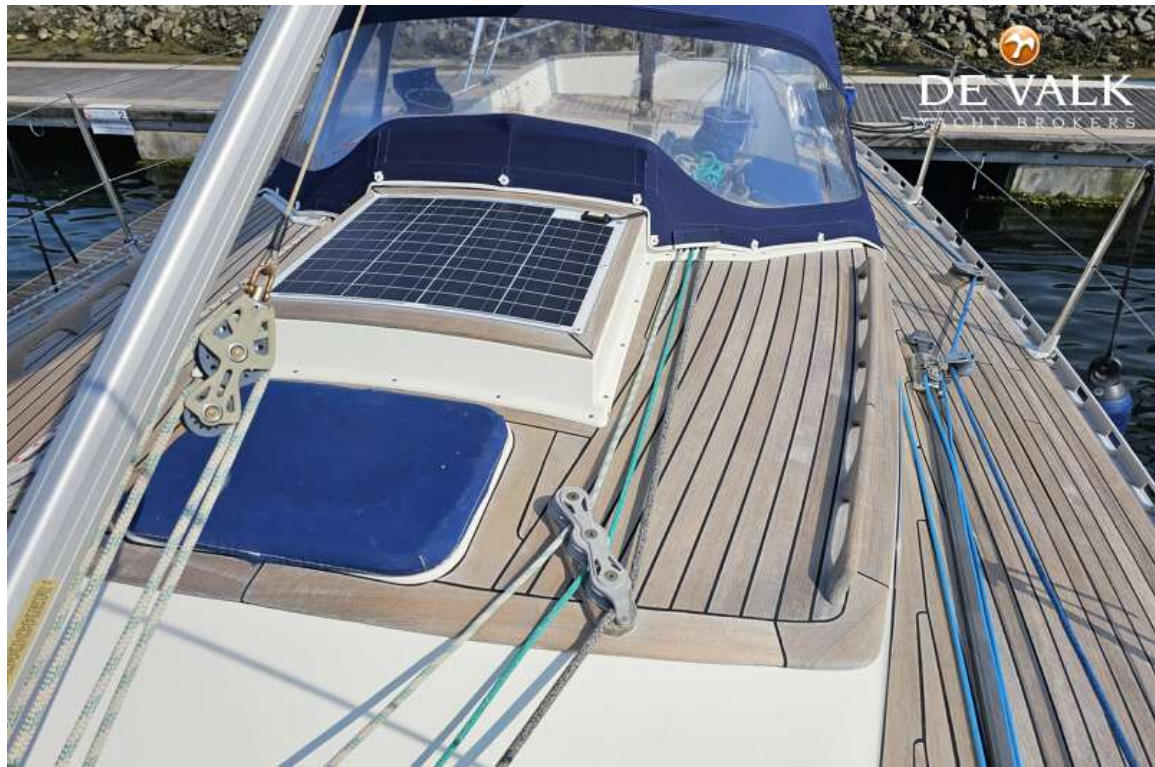
BREEHORN 37



BREEHORN 37



BREEHORN 37



BREEHORN 37



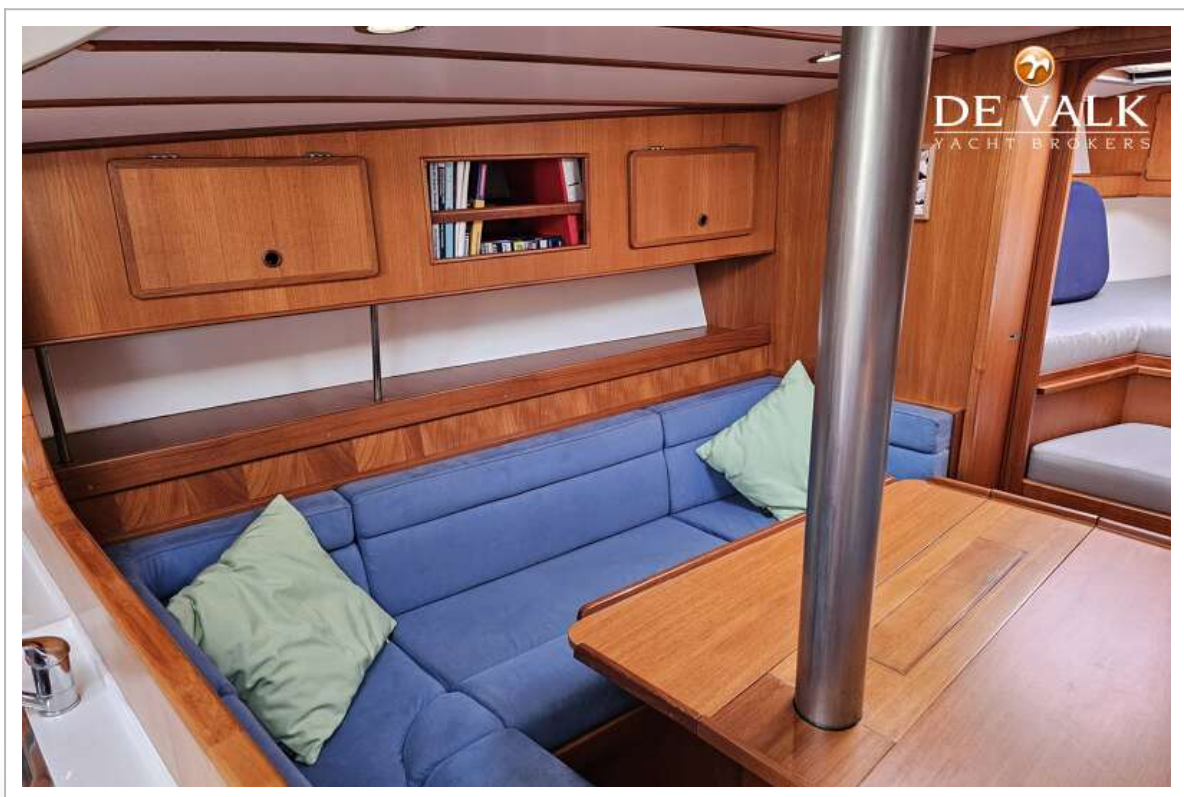
BREEHORN 37



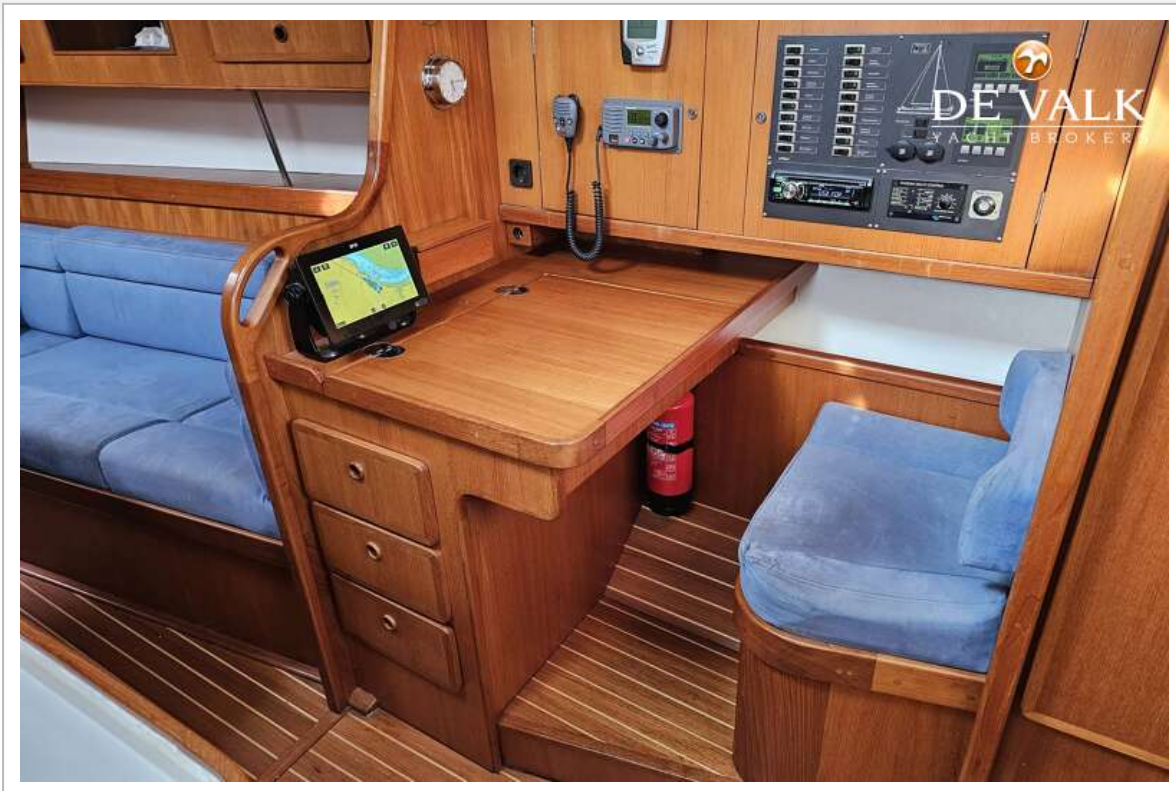
BREEHORN 37



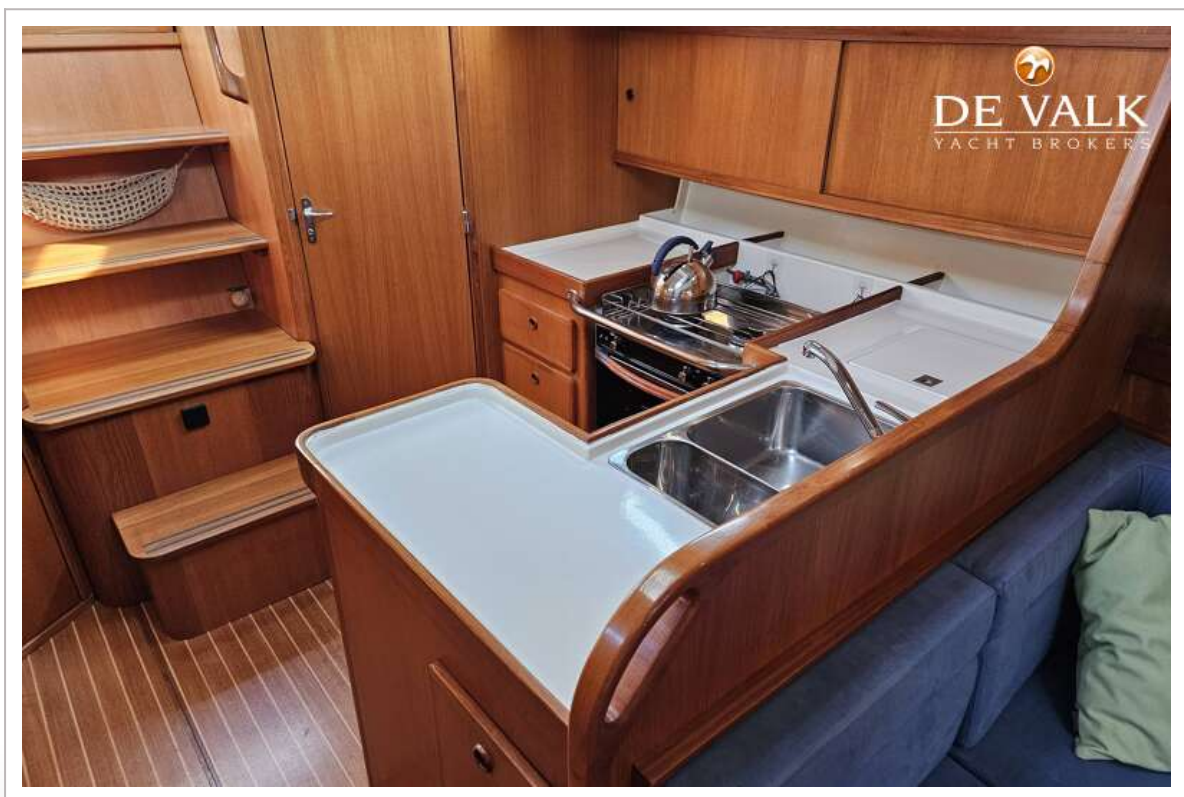
BREEHORN 37



BREEHORN 37



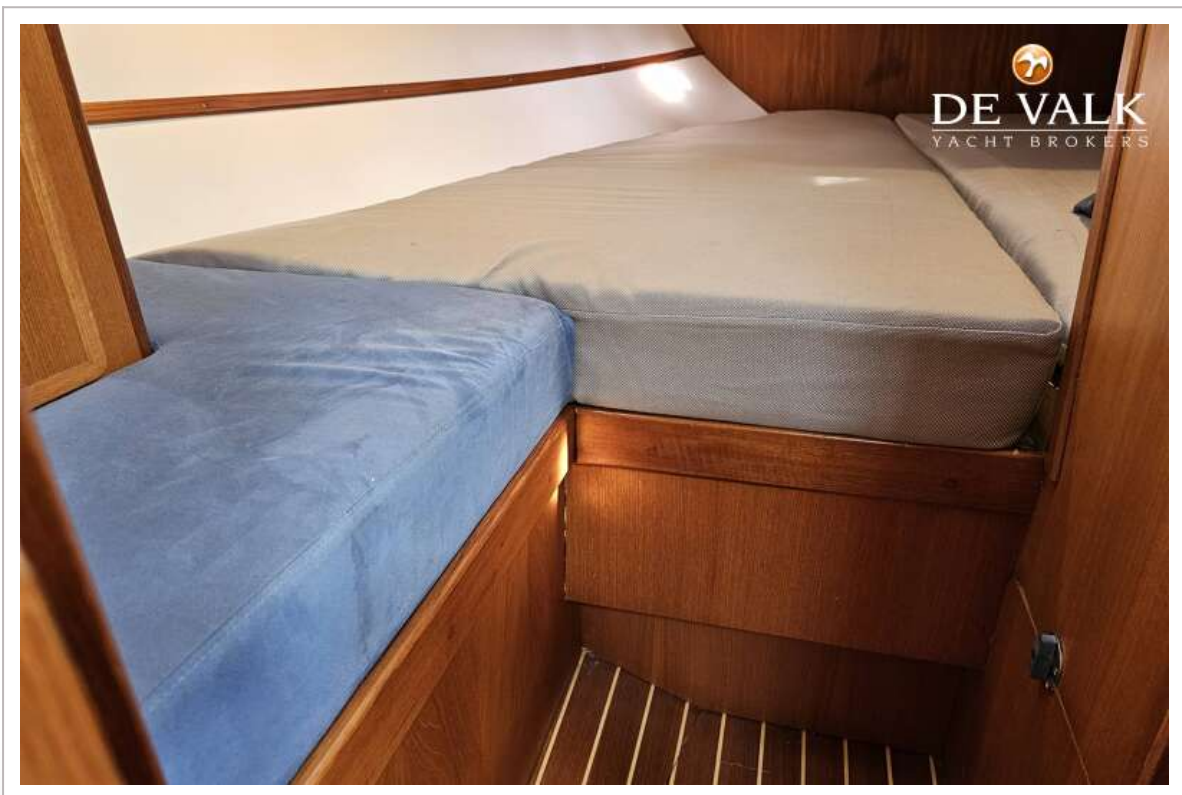
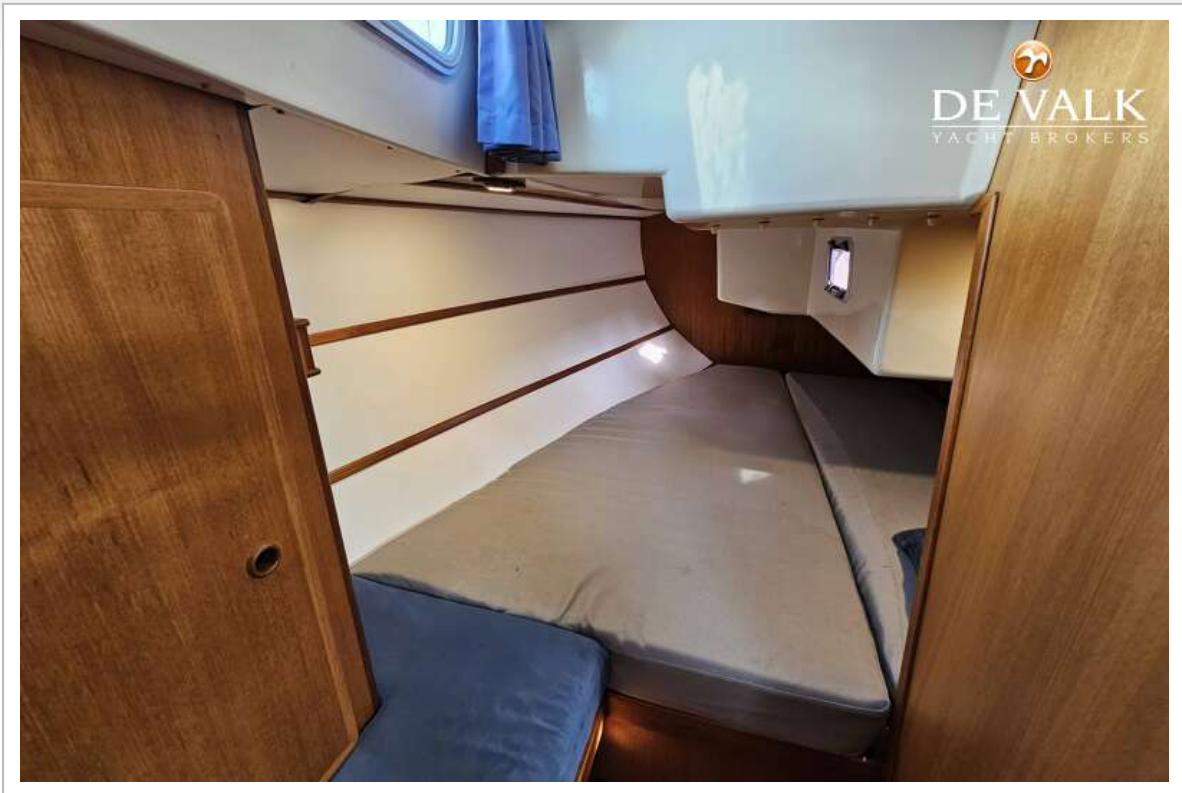
BREEHORN 37



BREEHORN 37



BREEHORN 37



BREEHORN 37



