



DE VALK  
YACHT BROKERS



## LAGOON 55



DE VALK  
YACHT BROKERS

## BROKER'S COMMENTS

Lagoon 55 Princess S is fully customized specced with excellent and carefully selected equipment, offering a true luxury cruising experience. The cabin layout is 4+2 owners version, fully specified from factory equipment and with over €600,000 worth of additionally customized upgraded equipment, including real teak throughout the entire yacht, strong bow thruster hull, underwater lights, and a Highfield 3.8 tender powered by a Honda 60 HP outboard engine. Always sailed with a professional skipper and hostess, and maintained throughout the entire year by a professional crew.

*Filip Mimica*

## SPECIFICATIONS

<b>Dimensions</b>	16.56 x 9.00 x 1.55 (m)	<b>Builder</b>	Beneteau
<b>Built</b>	2023	<b>Cabins</b>	6
<b>Material</b>	GRP	<b>Berths</b>	10
<b>Engine(s)</b>	2 x Nani N4-115 diesel	<b>Hp/Kw</b>	2 x 115.00 (hp), 84.64 (kw)
<b>Asking price</b>	€ 1.800.000 (VAT Not paid)	<b>Lying</b>	Croatia

## CONTACT

<b>Sales office</b>	De Valk Dalmatia	<b>Telephone</b>	0031 653 299 244
<b>Address</b>	Ul. Velimira Skorpika 22000 Sibenik HR	<b>E-mail</b>	dalmatia@devalk.nl

## DISCLAIMER

These particulars are given in good faith as supplied but cannot be guaranteed.



## GENERAL

<b>Model</b>	LAGOON 55
<b>Type</b>	catamaran sailing yacht
<b>LOA (m)</b>	16,56
<b>LWL (m)</b>	16,39
<b>Beam (m)</b>	9,00
<b>Draft (m)</b>	1,55
<b>Year built</b>	2023
<b>Builder</b>	Beneteau
<b>Country</b>	France
<b>Designer</b>	Lagoon
<b>Displacement (t)</b>	27,7
<b>Hull material</b>	GRP
<b>Hull colour</b>	Grey blue
<b>Keel type</b>	Dual keel
<b>Deck material</b>	yes
<b>Deck finish</b>	Teak
<b>Cockpit deck finish</b>	Teak
<b>Antifouling (year)</b>	April 2026
<b>Flybridge</b>	yes
<b>Flybridge cover</b>	Winter and summer awning
<b>Fuel tank (litre)</b>	1100L
<b>Level indicator (fuel tank)</b>	yes
<b>Freshwater tank (litre)</b>	960L
<b>Level indicator (freshwater)</b>	yes
<b>Blackwater tank (litre)</b>	456L
<b>Level indicator (blackwater)</b>	yes
<b>Wheel steering</b>	Single tiller on starboard
<b>Tiller</b>	Carbon
<b>Emergency tiller</b>	yes



## ACCOMMODATION

<b>Cabins</b>	6
<b>Berths</b>	10
<b>Crew cabin</b>	yes
<b>Crew berths</b>	Two bow cabins are for the crew
<b>Layout</b>	4+2 crew cabin and 4+1 crew bathroom
<b>Saloon</b>	yes
<b>Headroom saloon (m)</b>	2,10m
<b>Heating</b>	yes
<b>Air-conditioning</b>	Each cabin has it own AC unit
<b>Navigation center</b>	yes
<b>Galley</b>	yes
<b>Sink</b>	Two steal sinks in the saloon
<b>Cooker</b>	yes
<b>Oven</b>	yes
<b>Gas alarm</b>	yes
<b>Microwave</b>	yes
<b>Fridge</b>	4 fridges. Cockpit , Fly, Saloon, Portside
<b>Freezer</b>	One portside Samsung, 311 L
<b>Hot water system</b>	yes
<b>Manual and/or foot pump</b>	yes
<b>Dishwasher</b>	yes
<b>Kettle</b>	yes
<b>Hot water tap</b>	yes
<b>Ice maker</b>	Cockpit Vitafrigo
<b>Coffee maker</b>	Lavazza
<b>Owners cabin</b>	yes
<b>Wardrobe</b>	yes
<b>Bathroom</b>	yes
<b>Toilet</b>	yes
<b>Toilet system</b>	Electric Tecma



Shower	Automatic pump
Guest cabin 1	yes
Wardrobe	yes
Bathroom	yes
Toilet	yes
Toilet system	Electric Tecma
Shower	Automatic pump
Guest cabin 2	yes
Wardrobe	yes
Bathroom	yes
Toilet	yes
Toilet system	Electric Tecma
Shower	Automatic shower pump
Guest cabin 3	yes
Wardrobe	yes
Bathroom	yes
Toilet	yes
Toilet system	Electric Tecma
Shower	Automatic shower pump
Guest cabin 4	yes
Wardrobe	yes
Bathroom	yes
Toilet	yes
Toilet system	Electric Tecma
Shower	Automatic shower pump
Bathroom (crew)	yes
Toilet (crew)	yes
Shower (crew)	yes

## MACHINERY

No of engines	2
---------------	---



<b>Make</b>	Nani
<b>Type</b>	N4-115
<b>HP</b>	115
<b>kW</b>	84.64
<b>Fuel</b>	diesel
<b>Year installed</b>	2022
<b>Engine hours</b>	1370
<b>Drive</b>	sail-drive
<b>Bowthruster</b>	Sidepower in one hull
<b>Manual bilge pump</b>	yes
<b>Electric bilge pump</b>	yes
<b>Bilge alarm</b>	yes
<b>Electrical installation</b>	yes
<b>Generator</b>	ONAN 17,5 kW
<b>Running hours generator</b>	3100h
<b>Batteries</b>	yes
<b>Start battery</b>	8x pcs Exide, new put in 2024
<b>Service battery</b>	3x pcs New put in 2024
<b>Generator battery</b>	yes
<b>Bowthruster battery</b>	yes
<b>Battery monitor</b>	yes
<b>Battery charger</b>	yes
<b>Inverter</b>	24/220 V 50Hz 1200VA
<b>Shorepower</b>	yes
<b>Watermaker</b>	160 l/h

## NAVIGATION

<b>Compass</b>	yes
<b>Multi control display</b>	B&G
<b>Depth sounder</b>	B&G
<b>Log</b>	B&G



Windset	B&G
VHF	B&G
VHF handheld	B&G
Autopilot	B&G
Radar	B&G
Plotter	B&G on Fly and Saloon
AIS receiver	yes
Radio receiver	yes
Camera	yes
Navigation lights	yes

## EQUIPMENT

Cockpit cover	For summer and winter
Bimini	yes
Sun awning	yes
Winter cover	yes
Cockpit cushions	yes
Cockpit table	Teak
Cockpit chairs	yes
Bathing platform	Hydraulic
Gangway	Carbon
Deck shower	yes
Anchor	55kg
Anchor chain	100m
Chain counter	yes
Windlass	Quick
Dinghy	Highfield 3,8m
Outboard	Honda 60hp
Life raft	yes
TV	Samsung
TV receiver	yes



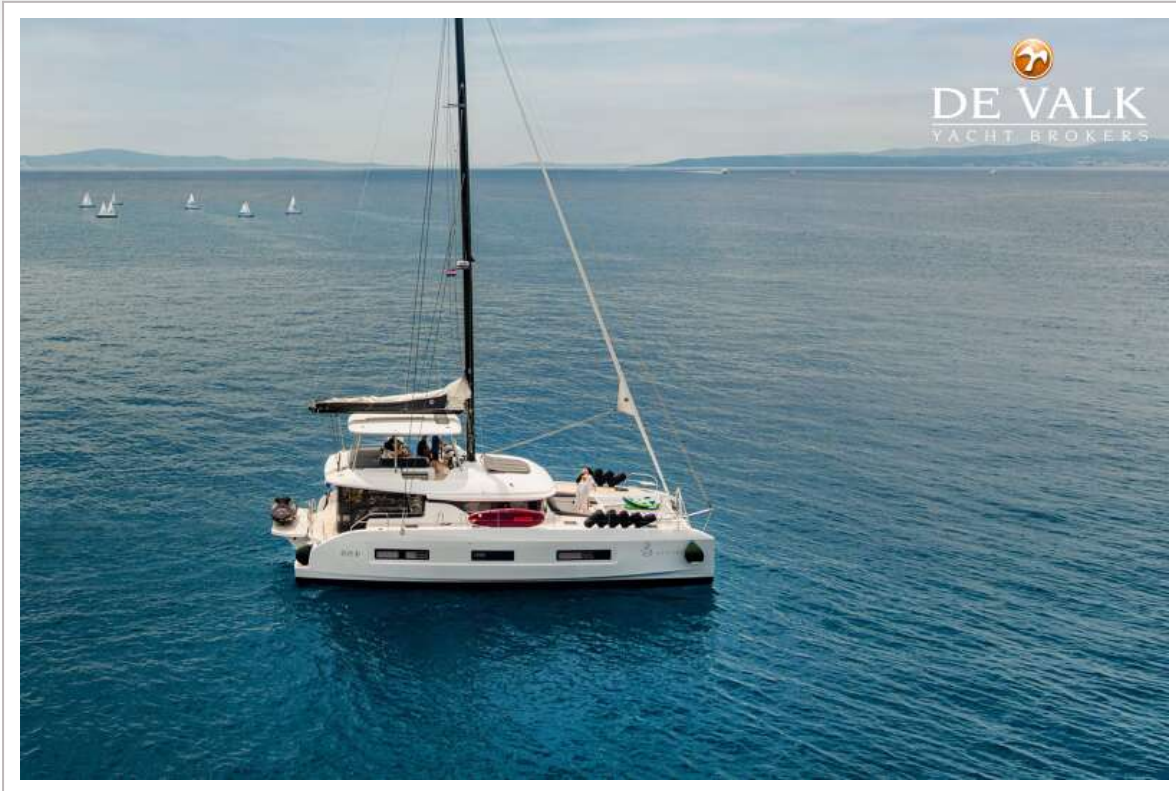
<b>Radio</b>	Fusion radio Apollo, JL audio
<b>Sub-woofer</b>	yes
<b>Cockpit speakers</b>	JBL
<b>Speakers in salon</b>	JBL
<b>Speakers in cabin</b>	JBL
<b>Extra info</b>	2 x JOBE Infinity Sea Scooter Knee board Water tube Fishing g
<b>Extra info</b>	2 x JOBE Stand-up paddleboard Snorkeling gear

## RIGGING

<b>Rigging</b>	yes
<b>Standing rigging</b>	yes
<b>Mainsail</b>	Dacron
<b>Mainsail cover</b>	Lazy bag
<b>Genoa</b>	Incidence
<b>Genoa furler</b>	yes
<b>Code Zero</b>	yes
<b>Reefing System</b>	yes
<b>Primary sheet winch</b>	All electric
<b>Secondary sheet winch</b>	All electric



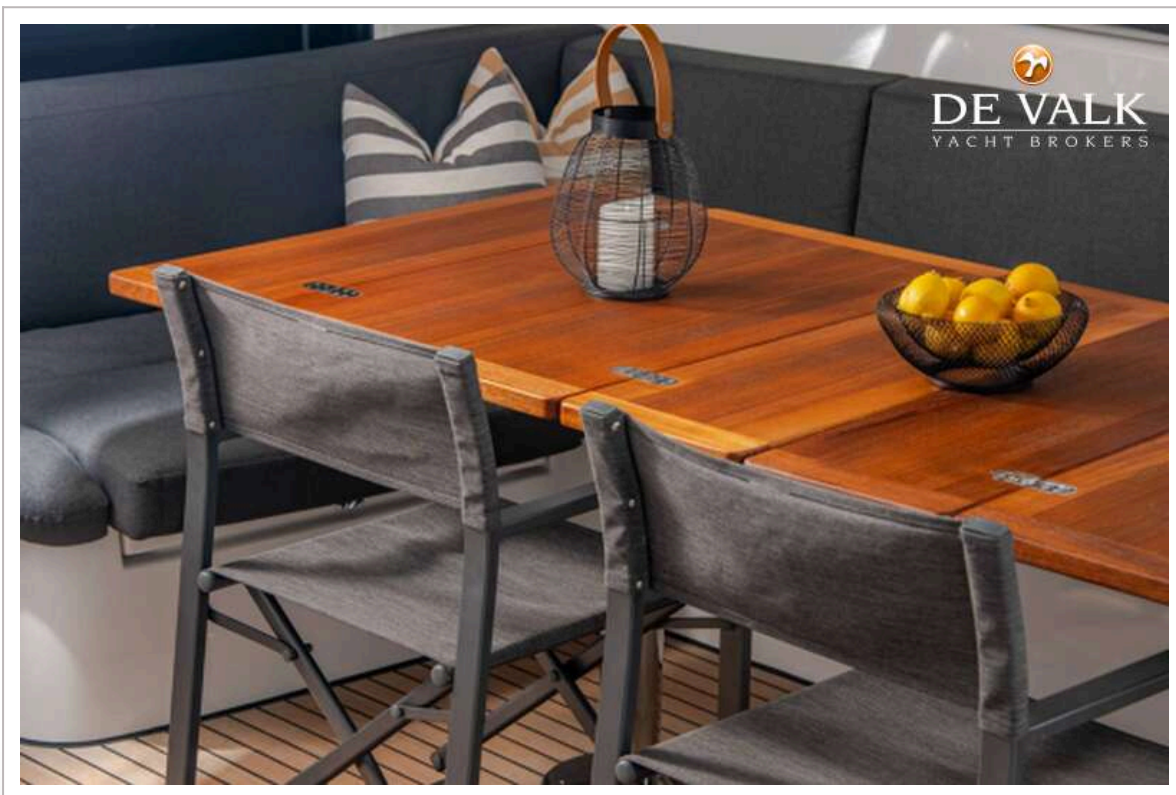
# LAGOON 55



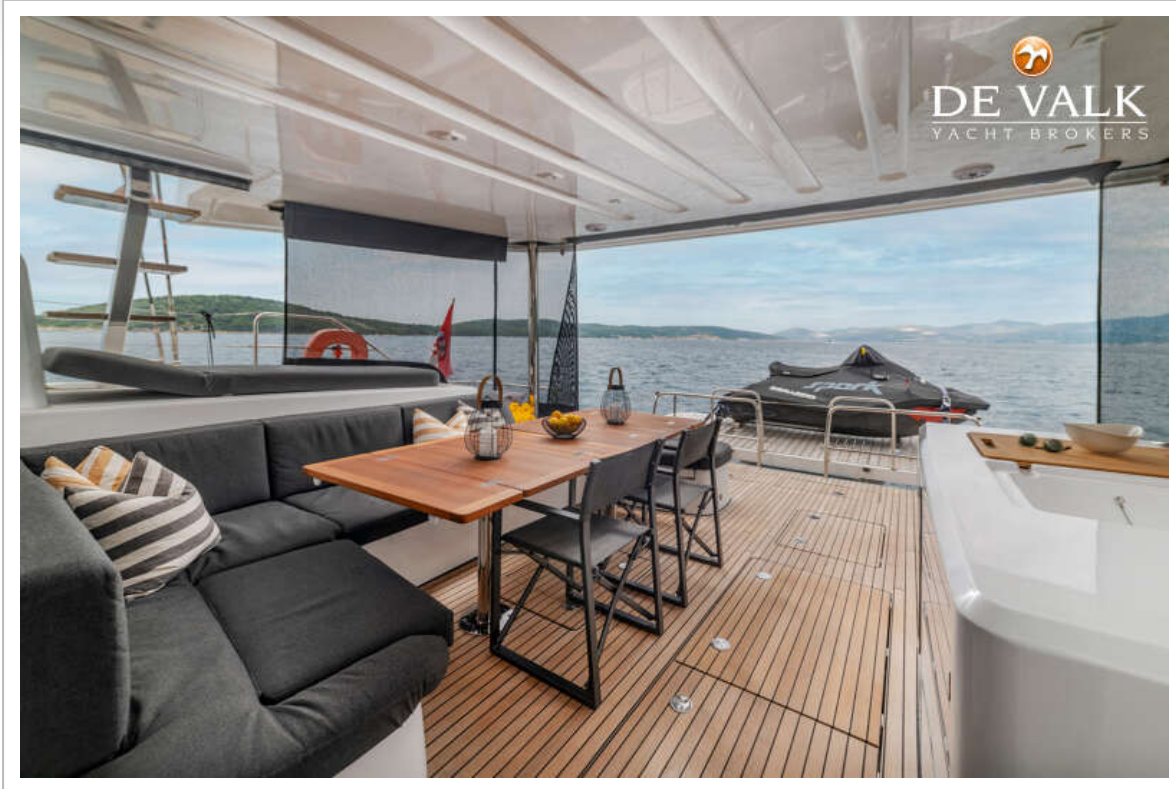
# LAGOON 55



# LAGOON 55



# LAGOON 55



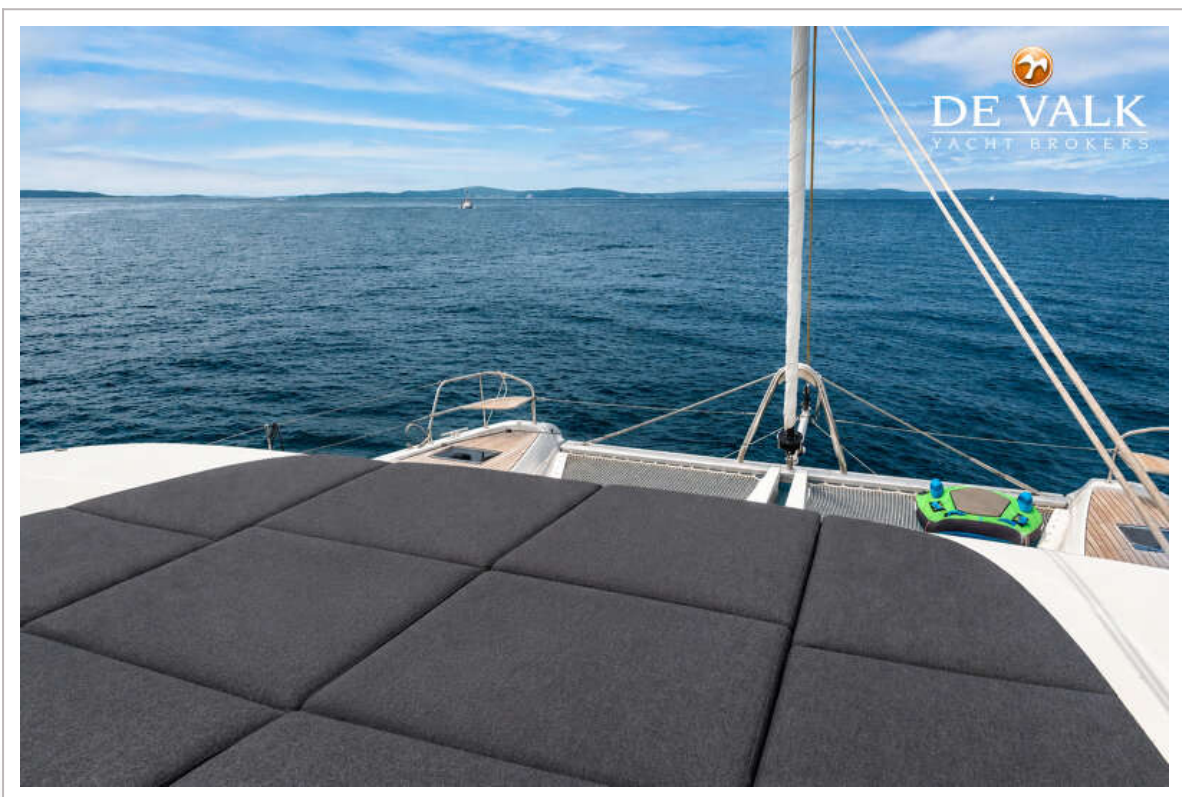
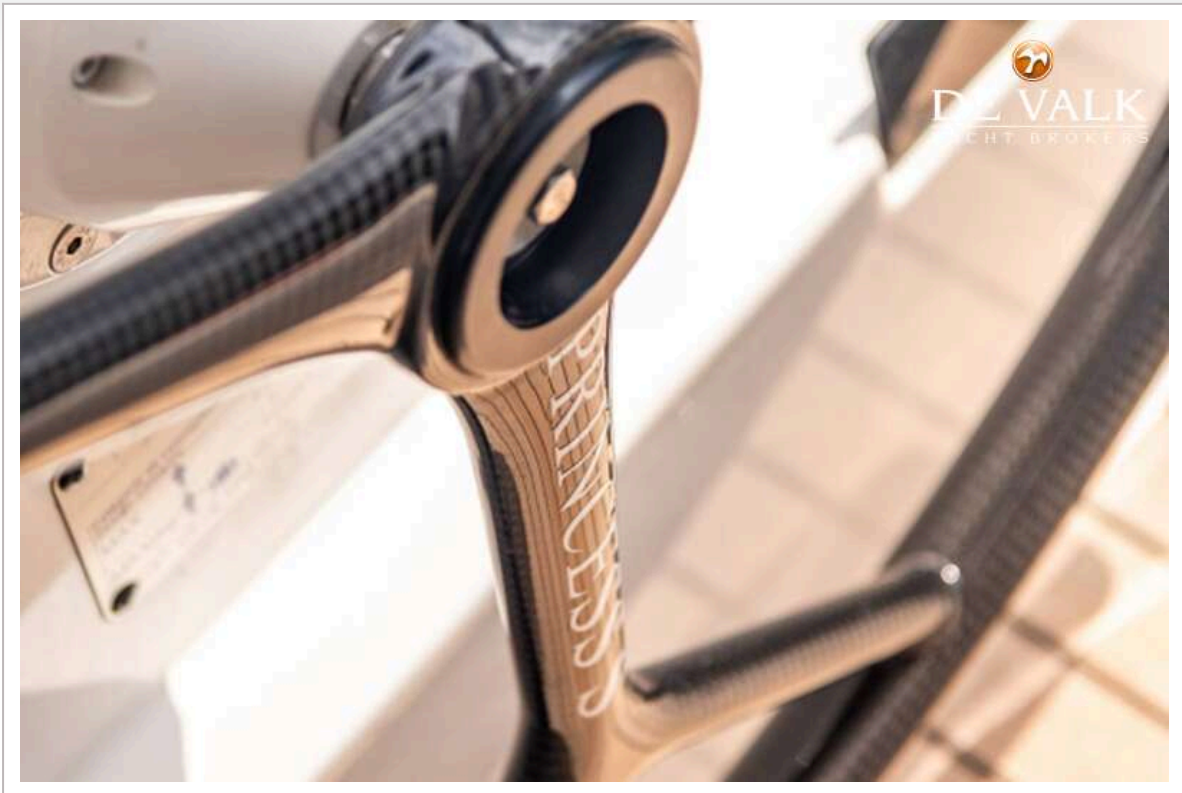
# LAGOON 55



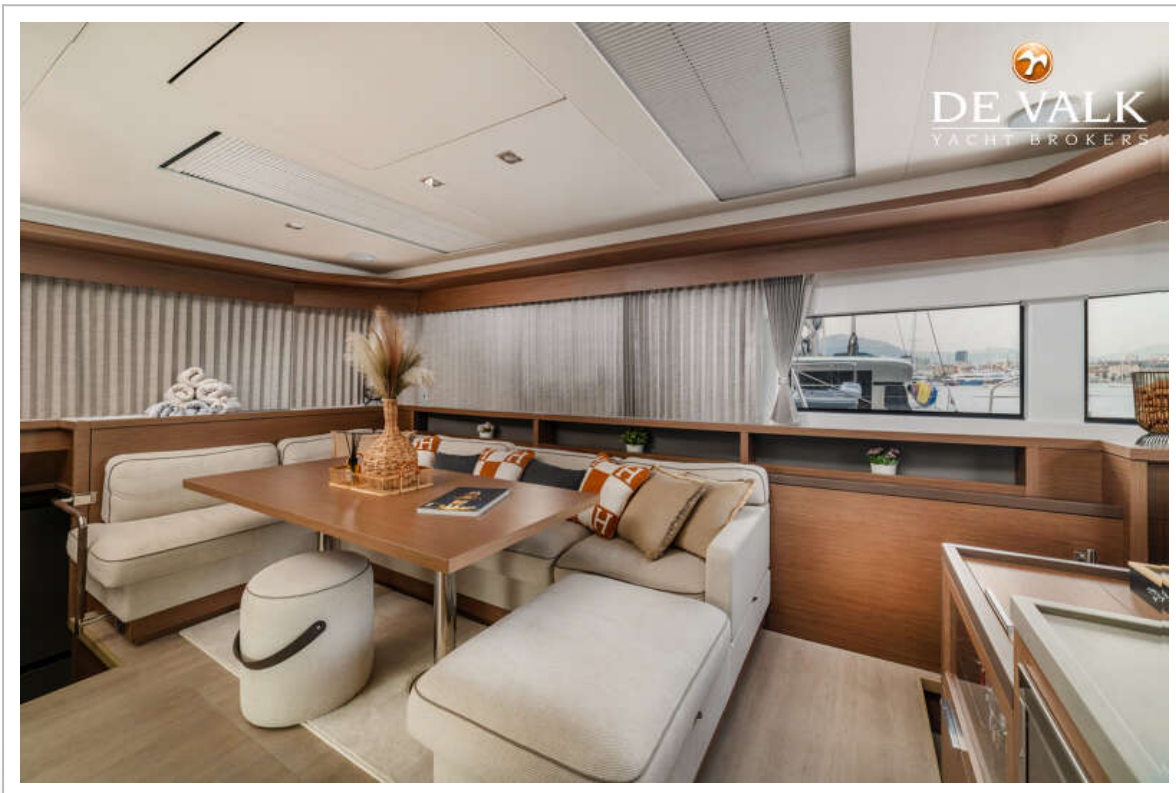
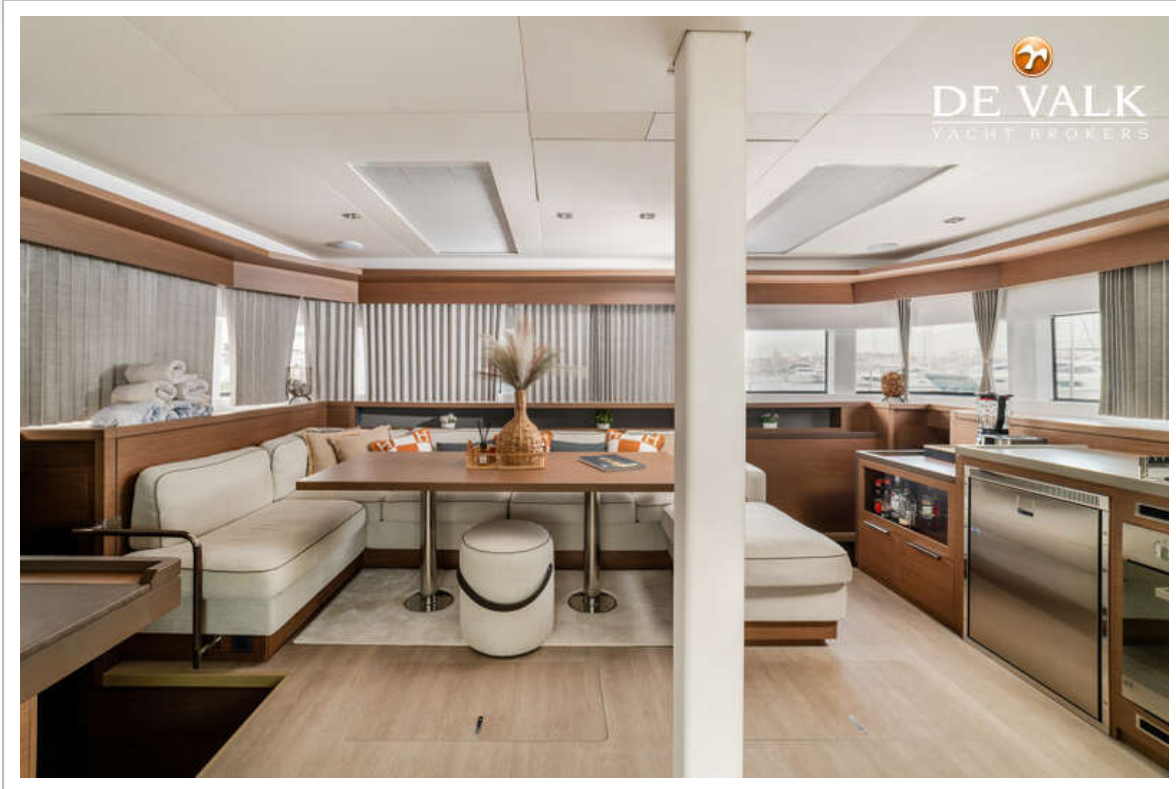
# LAGOON 55



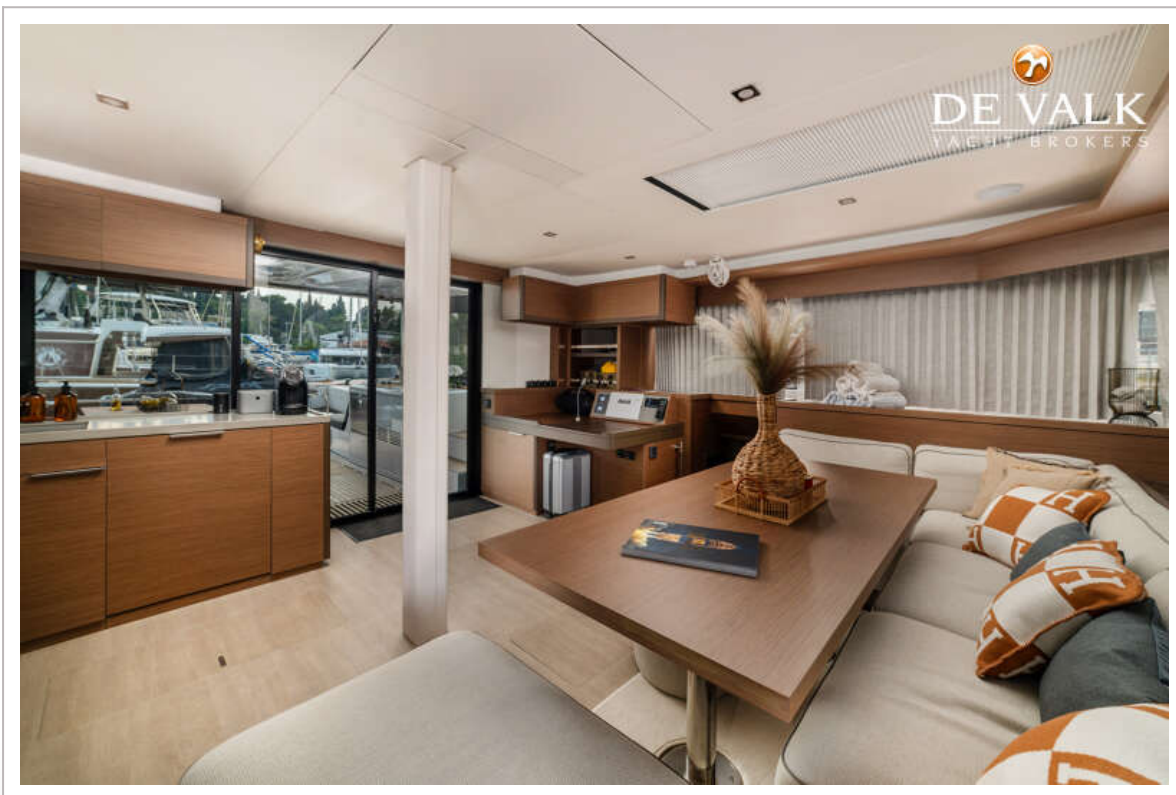
# LAGOON 55



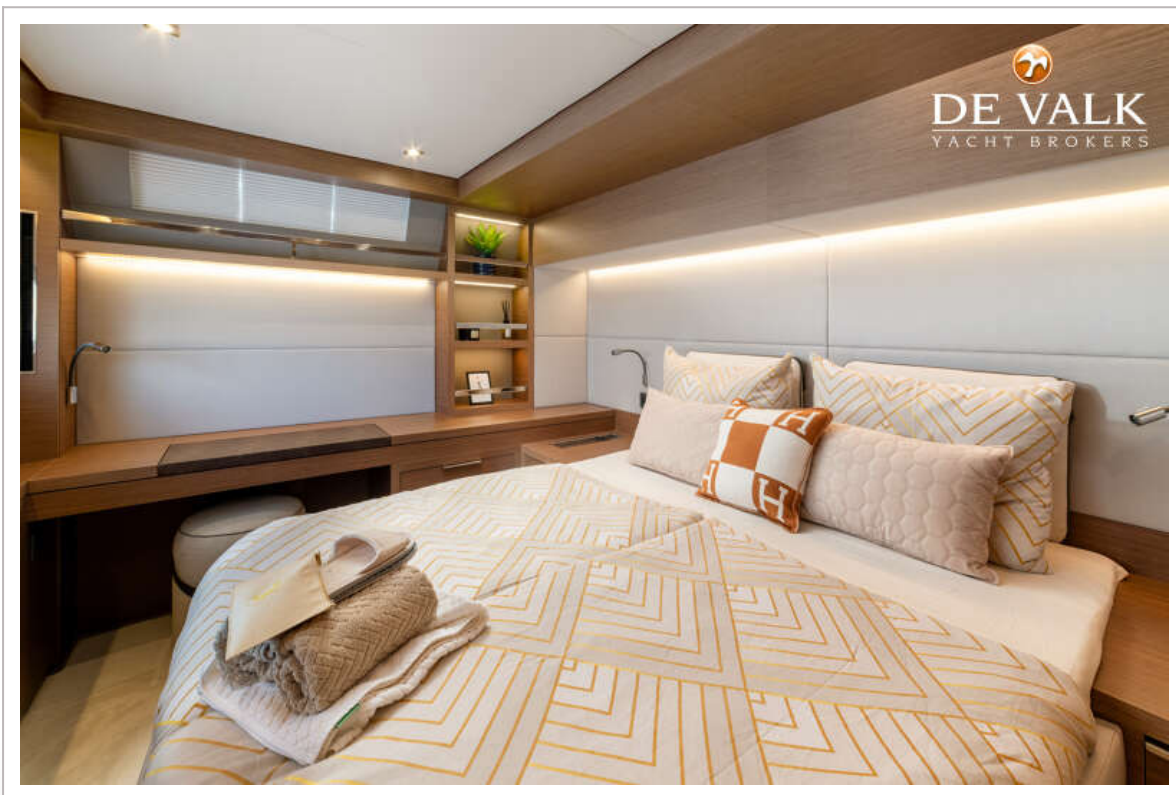
# LAGOON 55

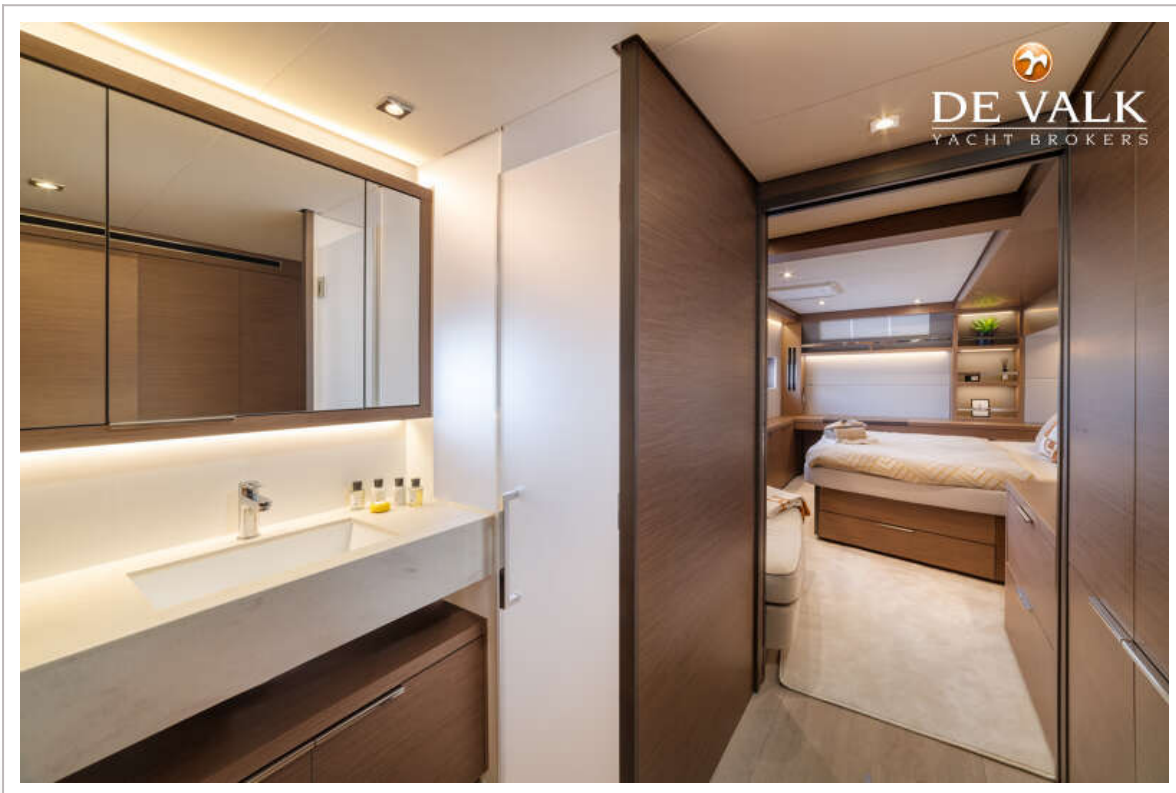
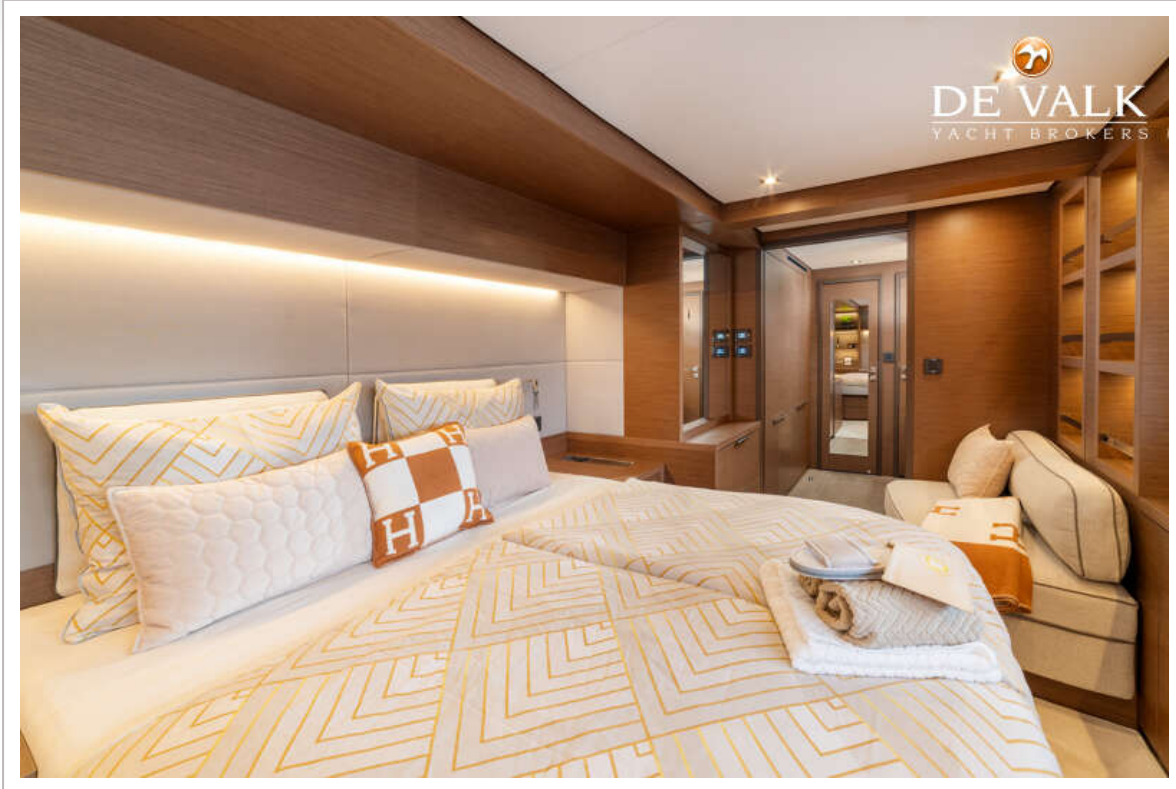


# LAGOON 55

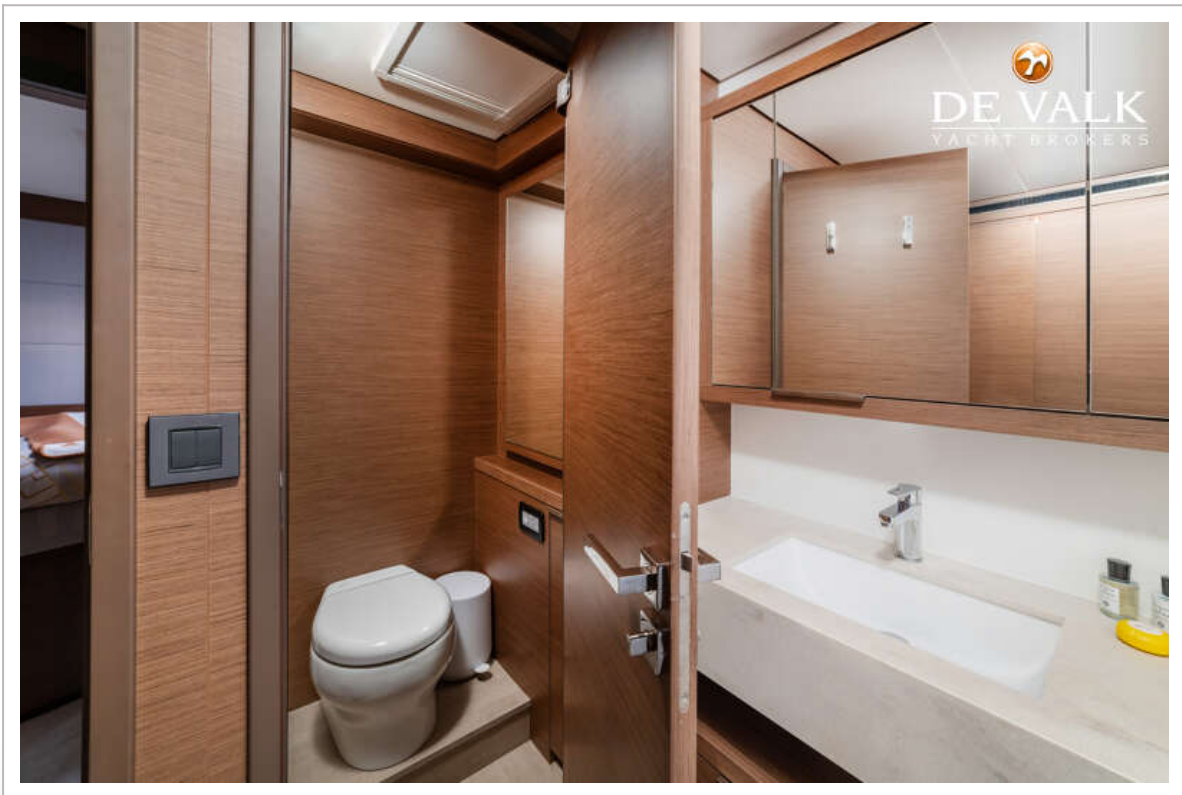
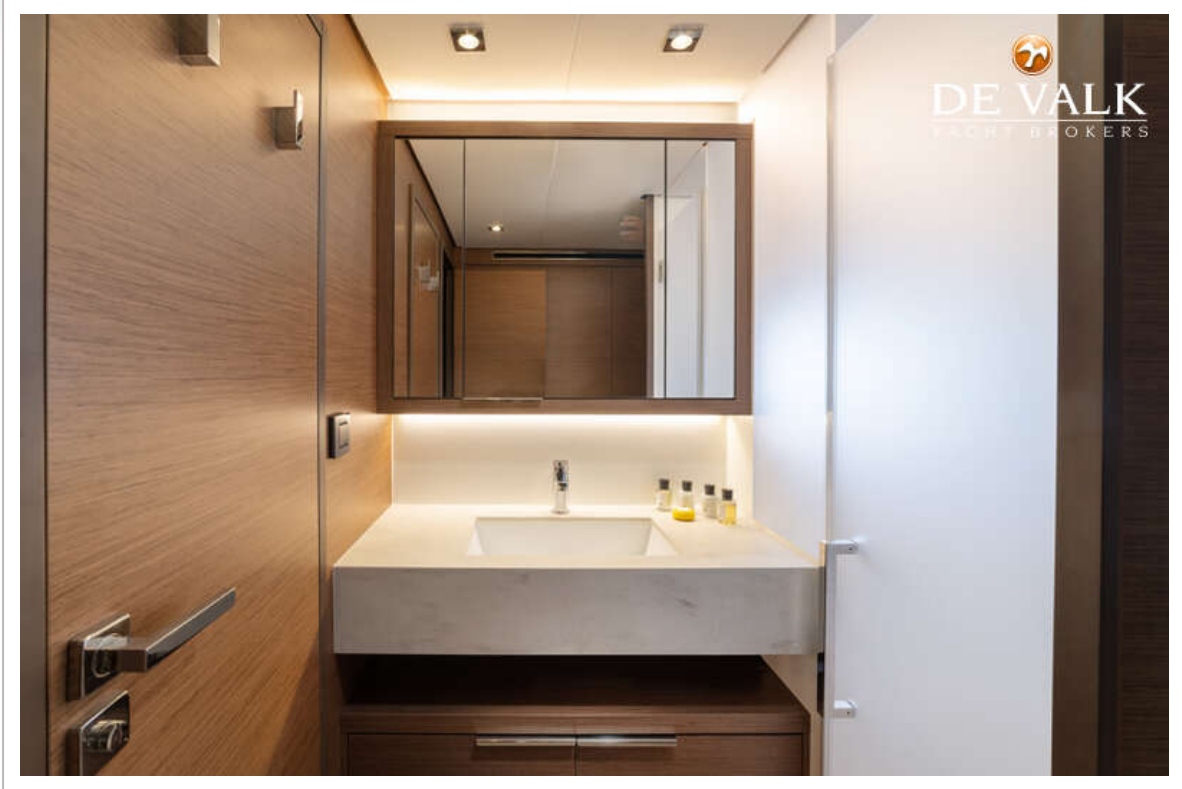


# LAGOON 55

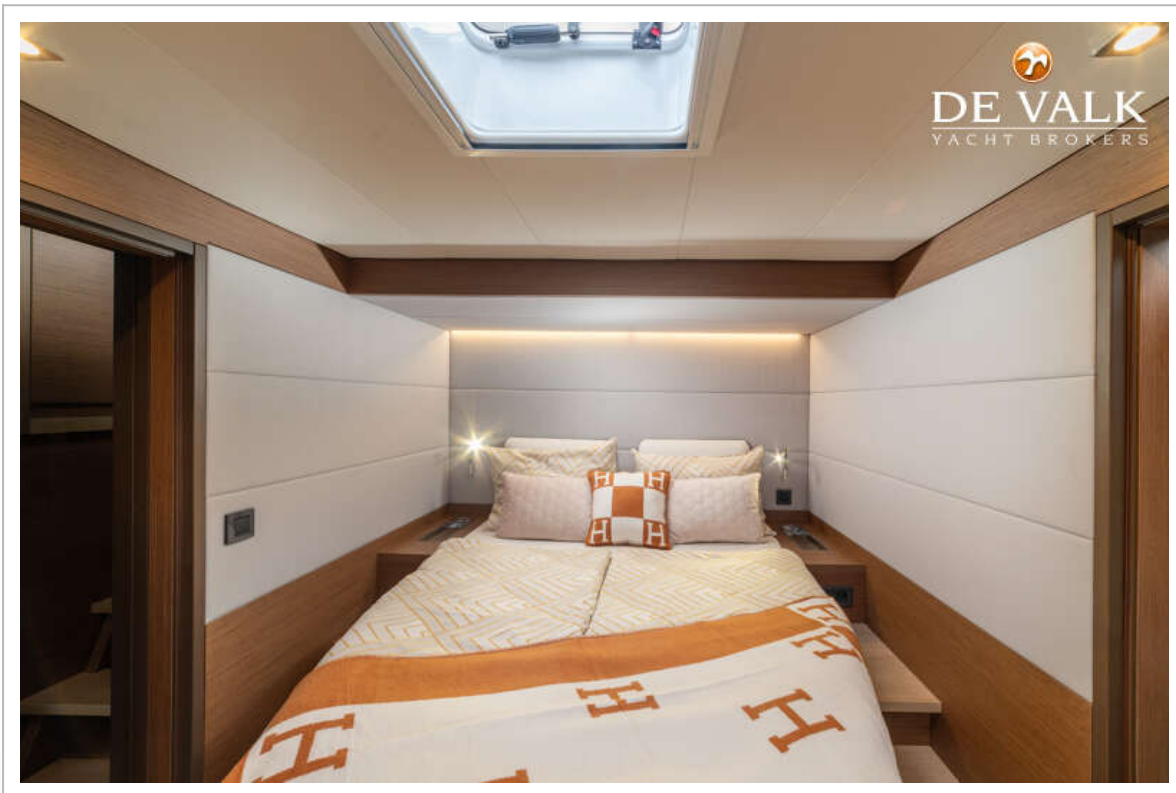
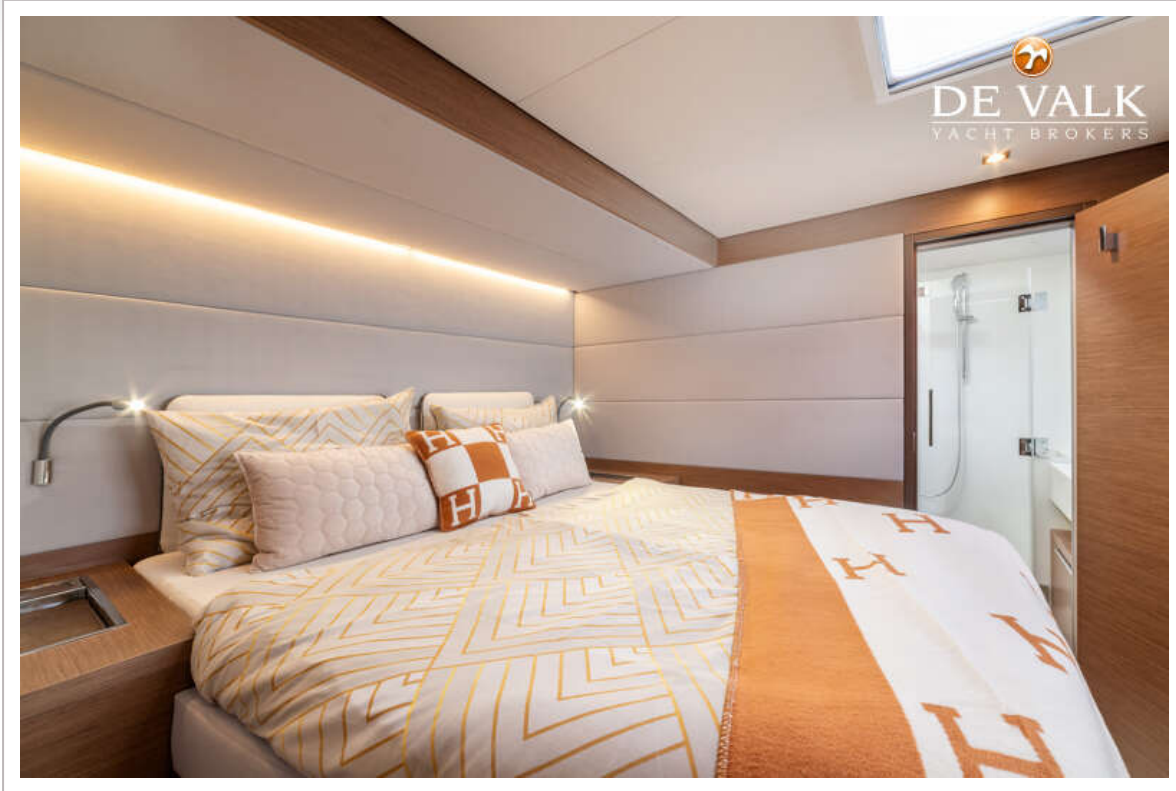


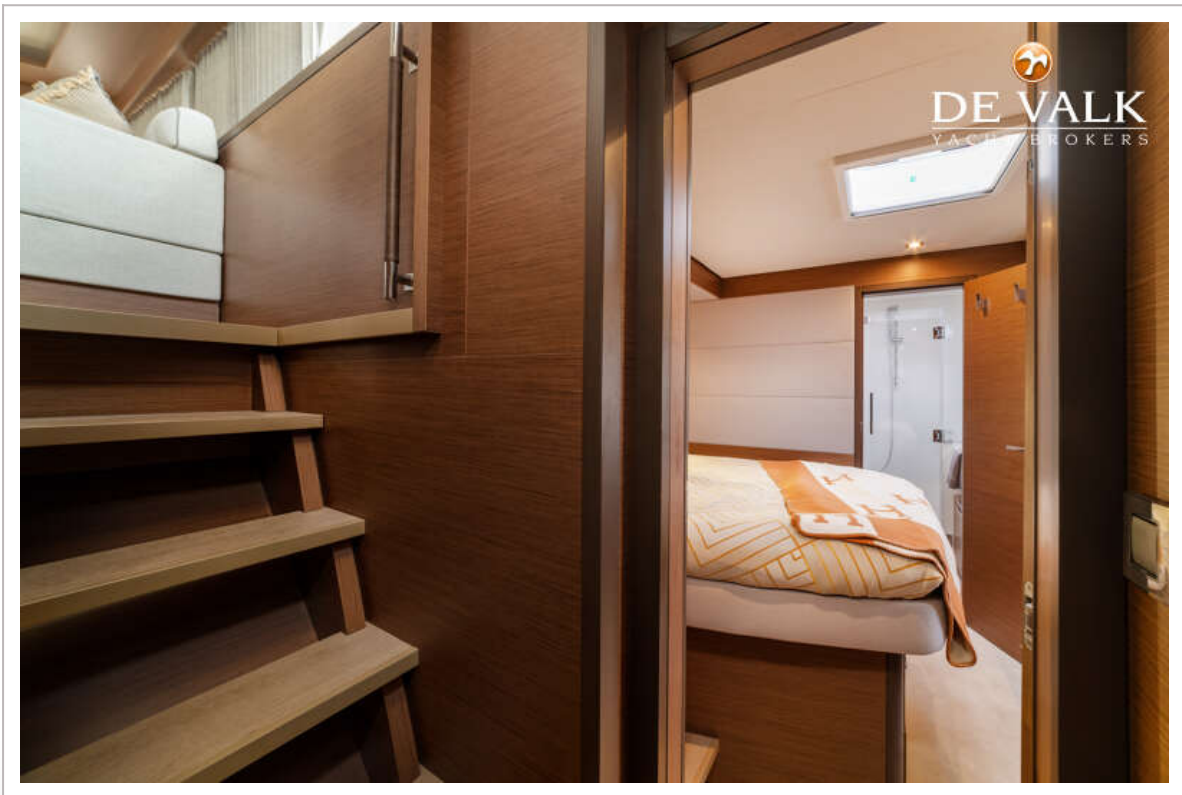
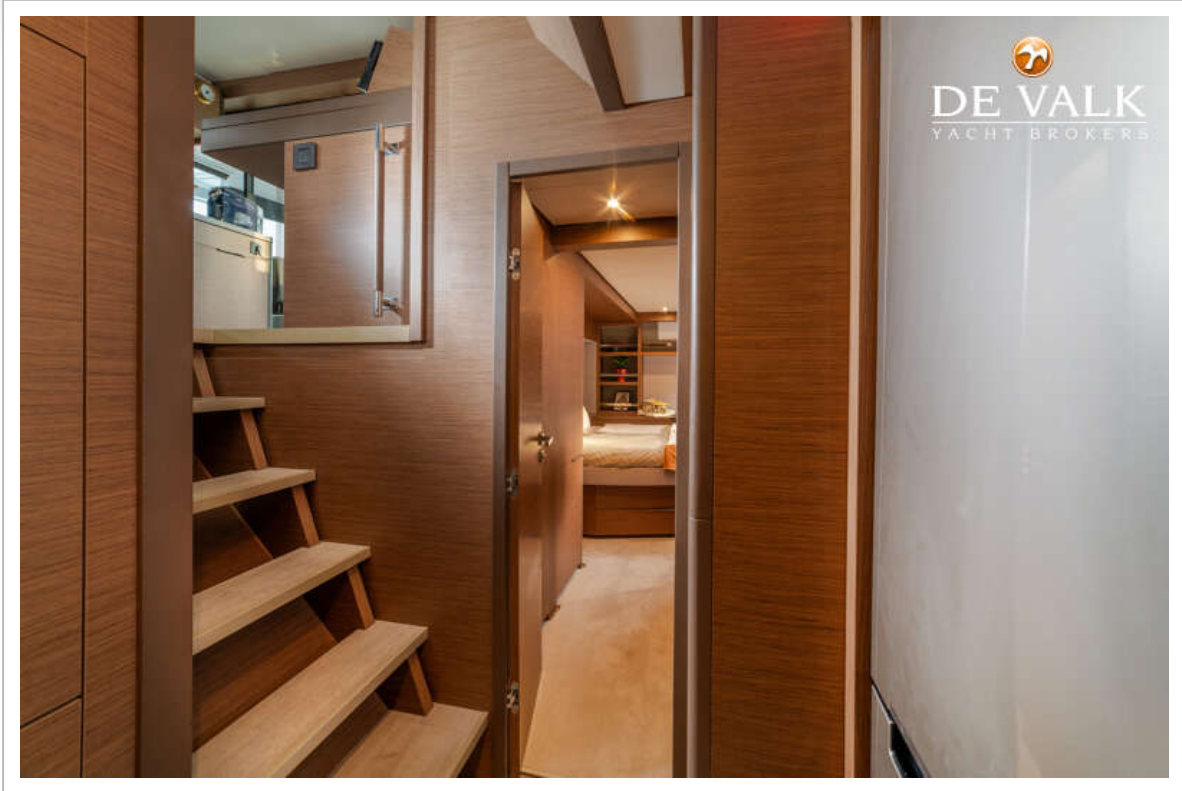


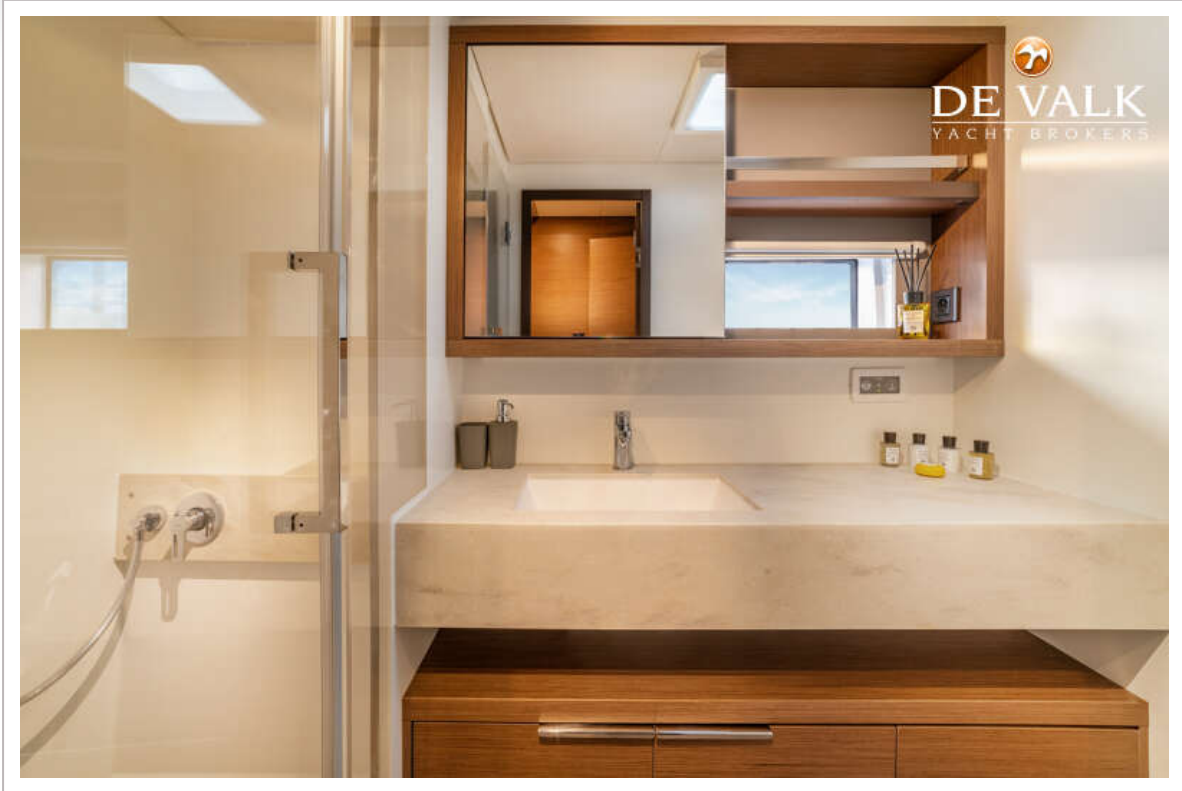
# LAGOON 55



# LAGOON 55







# LAGOON 55

