



DE VALK  
YACHT BROKERS

HALLBERG RASSY 42 F



DE VALK  
YACHT BROKERS

BROKERAGE | CHARTER | BERTHS | FINANCE | INSURANCE | YACHT MANAGEMENT

# HALLBERG RASSY 42 F

## BROKER'S COMMENTS

Hallberg Rassy 42F "Aventyr" built in 1995 by Hallberg Rassy Varv AB in Sweden en designed by Germán Frers. Hallberg Rassy has a phenomenal reputation for building safe, seaworthy and comfortable yachts, and this 42 F is no exception. 2 cabin, 2 bathroom layout. Volvo Penta diesel engine and electric bowthruster for easy manoeuvring in the marina. Webasto heating and Cruisair airconditioning. Viewing possible by appointment in The Netherlands.

*Arne Doodeman*

## SPECIFICATIONS

<b>Dimensions</b>	13.22 x 3.95 x 2.00 (m)	<b>Builder</b>	Hallberg-Rassy Varvs AB
<b>Built</b>	1995	<b>Cabins</b>	2
<b>Material</b>	GRP	<b>Berths</b>	6
<b>Engine(s)</b>	1 x Volvo Penta TMD22A diesel	<b>Hp/Kw</b>	78.00 (hp), 57.41 (kw)
<b>Asking price</b>	€ 135.000 (VAT Not paid)	<b>Lying</b>	contact Monnickendam

## CONTACT

<b>Sales office</b>	De Valk Monnickendam B.V.	<b>Telephone</b>	+31 (0)299 65 63 50
<b>Address</b>	Hoogedijk 6 1145 PM Katwoude NL	<b>E-mail</b>	monnickendam@devalk.nl

## DISCLAIMER

These particulars are given in good faith as supplied but cannot be guaranteed.



# HALLBERG RASSY 42 F

## GENERAL

Model	HALLBERG RASSY 42 F
Type	sailing yacht
LOA (m)	13,22
LWL (m)	10,35
Beam (m)	3,95
Draft (m)	2,00
Year built	1995
Builder	Hallberg-Rassy Varvs AB
Country	Sweden
Designer	Germán Frers
Displacement (t)	12,5
Ballast (tonnes)	4200 kg
Hull material	GRP
Hull colour	white
Hull shape	round-bilged
Keel type	fin keel with bulb
Superstructure material	GRP
Rubbing strake	stainless steel
Deck material	GRP
Deck finish	teak   Needs serious attention/replacement
Superstructure deck finish	teak   Needs serious attention/replacement
Cockpit deck finish	teak
Window frame	aluminium
Window material	tempered glass
Deckhatch	4x
Portholes	yes
Fuel tank (litre)	420 litre
Level indicator (fuel tank)	Marpac
Freshwater tank (litre)	685 litre
Level indicator (freshwater)	VDO



# HALLBERG RASSY 42 F

Wheel steering	cable steering
Outside helm position	yes
Extra info	The Hull is painted a couple of years ago
Extra info	Lloyds certified

## ACCOMMODATION

Cabins	2
Berths	6
Interior	mahogany
Floor	wood
Open cockpit	yes
Saloon	yes
Heating	diesel ducted hot air   Webasto
Air-conditioning	Cruiseair
Chart table	yes
Opening door to cockpit	yes
Galley	yes
Countertop	yes
Sink	stainless steel   Double stainless steel sink
Cooker	calor gas   Force 10, 4 burner
Oven	Force 10
Fridge	yes
Hot water system	220V + engine   boiler
Water pressure system	electrical Jabsco Par-Max
Owners cabin	double bed
Wardrobe	hanging and shelves
Bathroom	en suite
Toilet	Jabsco
Toilet system	manual
Wash basin	yes
Shower	yes



# HALLBERG RASSY 42 F

Guest cabin 1	v-bed
Wardrobe	hanging and shelves
Bathroom	en suite
Toilet	Jabsco
Toilet system	manual
Wash basin	yes
Shower	yes

## MACHINERY

No of engines	1
Make	Volvo Penta
Type	TMD22A
HP	78
kW	57.41
Fuel	diesel
Year of overhaul	Top end rebuild was done in 2019.
Engine cooling system	freshwater heat exchanger
Drive	shaft
Engine controls	bowden cable Volvo Penta
Gearbox	yes
Bowthruster	electric
Exhaust	watercooled
Thrust bearing	yes
Propeller shaft material	stainless steel
Shaft lubrication	water
Manual bilge pump	yes
Electric bilge pump	yes
Generator	Fisher Panda 8000 Compact power
Start battery	1 x (02-2025)
Service battery	6 x Trojan T-105 deep cycle (02-2025)
Battery charger	Victron Energy Centaur 40 ah.



# HALLBERG RASSY 42 F

Solar panel	2 x
Shorepower	with cable
Watermaker	Seafresh SH204A
Extra info	Volvo Penta fuel filter

## NAVIGATION

Compass	Silva type 125 liquid compass
Depth sounder	Autohelm Depht
Log	Autohelm Speed
Windset	Autohelm Wind
Repeater	Autohelm Multi
VHF	Icom IC-M505, Icom Ic-M801E
VHF handheld	Standard Horizon HX380
Autopilot	Raymarine ST6002
Rudder angle indicator	In the screen of the autopilot
Radar	Si-Tex
GPS	Furuno GP31
Personal computer	Compaq Pro 4300
Transmitter	Iridium

## EQUIPMENT

Fixed windscreen	yes
Sprayhood	yes
Cockpit cover	yes
Bimini	yes
Bathing platform	yes
Anchor	30KG stainless steel GYL anchor
Anchor chain	Galvanized chain
Windlass	electrical Lofrance Project
Dinghy	rigid hull Highfield rib with aluminum hull
Outboard	yes



Sea railing	yes
Grab rail (superstructure)	teak
Pushpit	yes
Pulpit	yes
Life raft (pers)	container 6 pers. life raft (need service)
Fenders	yes
Mooring lines	yes
TV	Samsung
Radio-cd player	Alpine
Clock - barometer	Plastimo clock and barometer
Fire extinguisher	yes
Extinguisher in engine room	yes

## RIGGING

Rigging	sloop-cutter
Standing rigging	wire
Brand mast	Seldén
Material mast	aluminium
Spreaders	2 x
Mainsail	Elvstrom (2016)
Battcars	yes
Genoa	Elvstrom (2016) with reinforcement panels
Genoa furler	Harken MKIV 2 furler
Backstay adjuster	mechanical
Boomvang	mechanical and tackle   Selden
Primary sheet winch	Lewmar 40
Genoa sheetwinches	Lewmar 58
Halyard winches	2 x Lewmar 40 on the mast
Spi-pole	aluminium





# HALLBERG RASSY 42 F





# HALLBERG RASSY 42 F



# HALLBERG RASSY 42 F



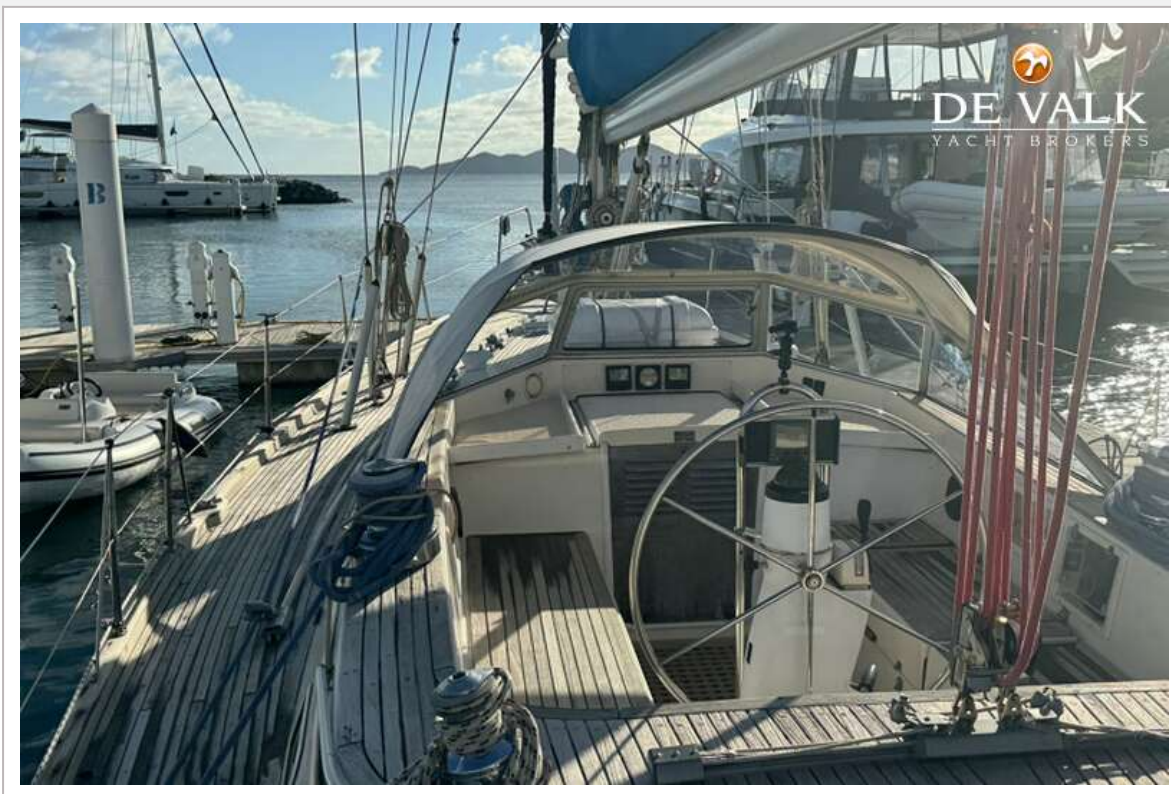


# HALLBERG RASSY 42 F





# HALLBERG RASSY 42 F





# HALLBERG RASSY 42 F





# HALLBERG RASSY 42 F

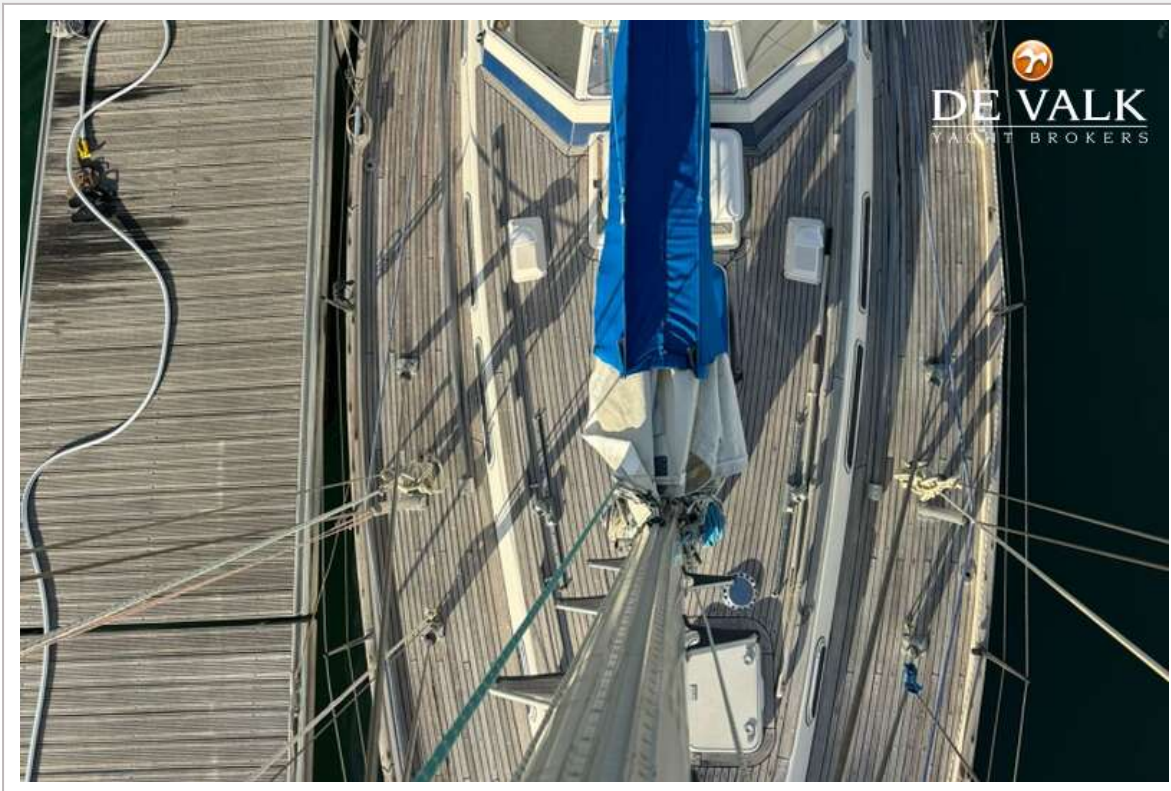




# HALLBERG RASSY 42 F



# HALLBERG RASSY 42 F





# HALLBERG RASSY 42 F

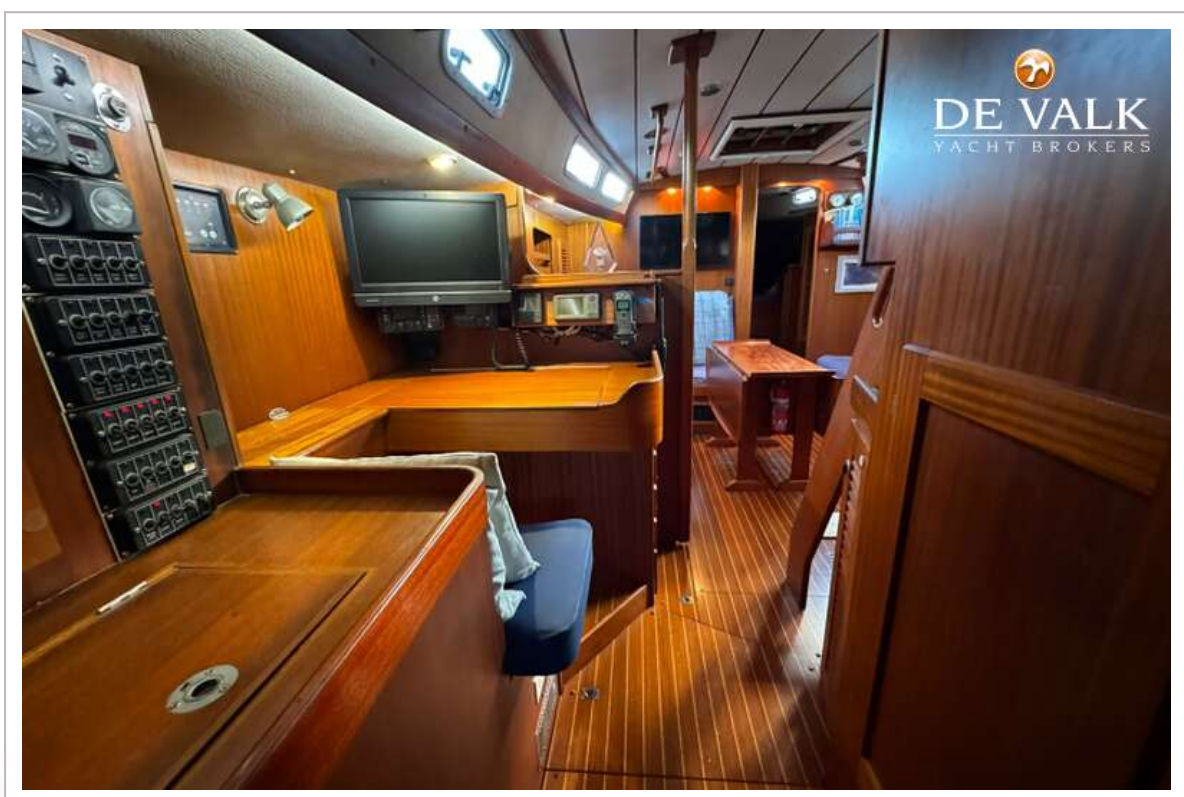


# HALLBERG RASSY 42 F

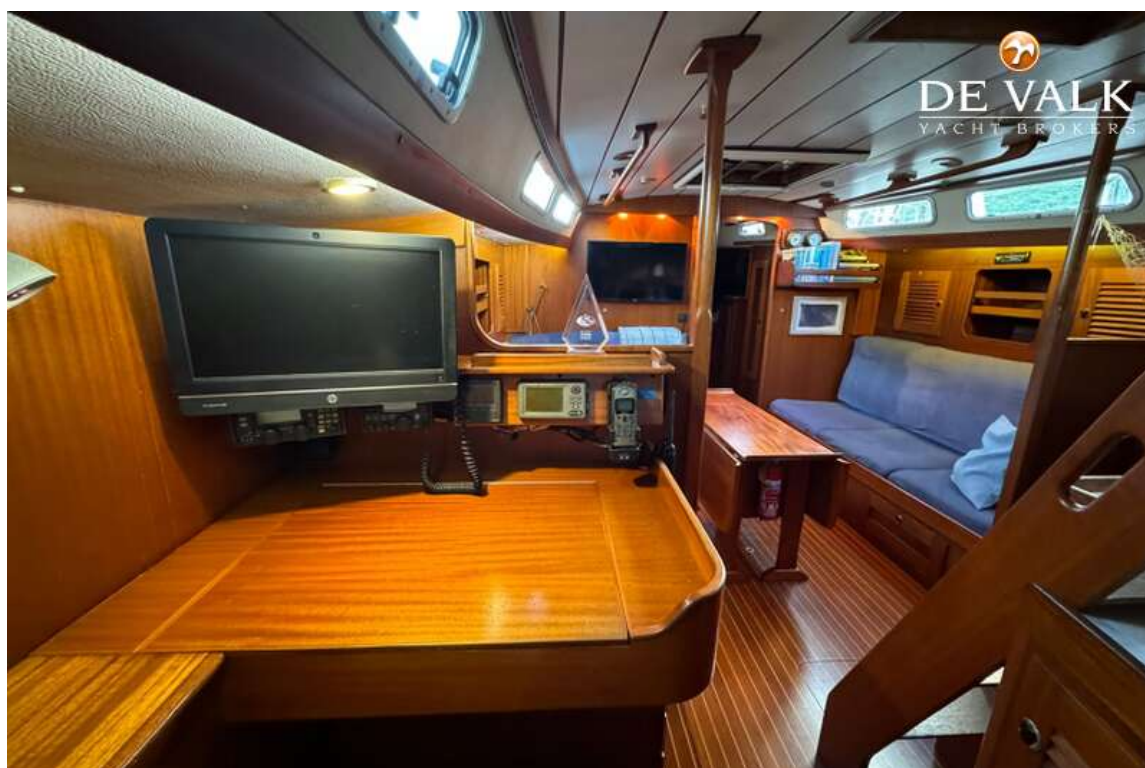
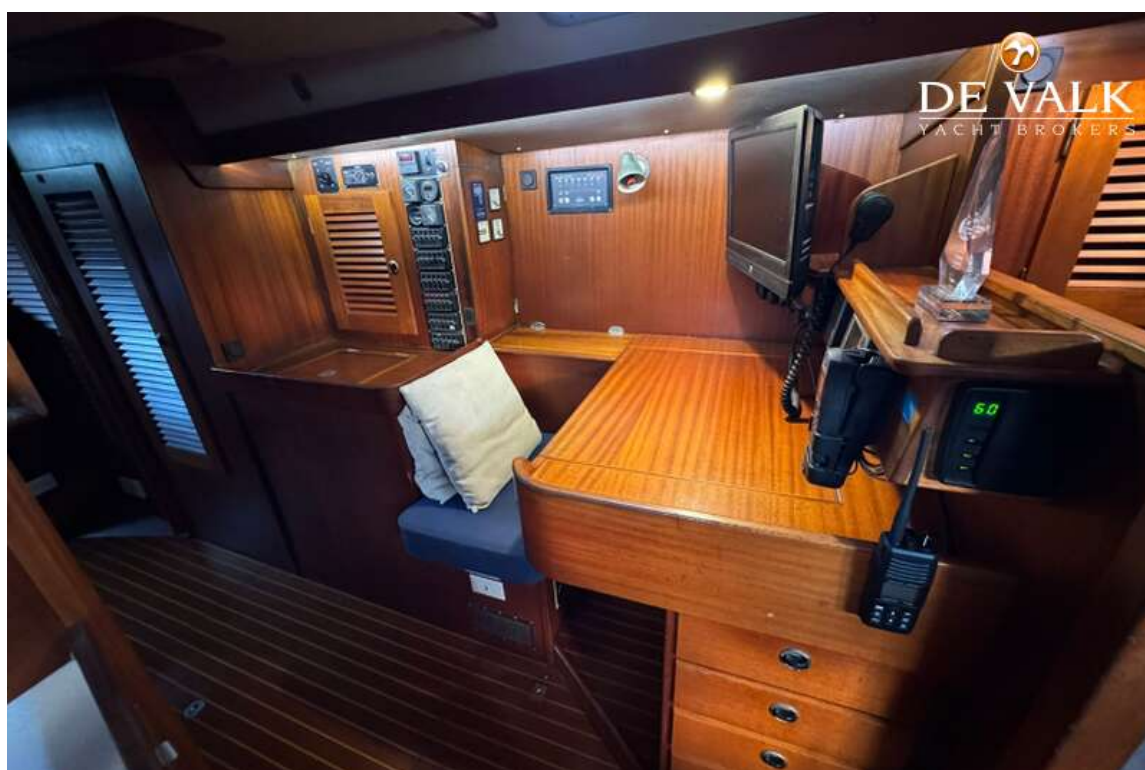




# HALLBERG RASSY 42 F



# HALLBERG RASSY 42 F





# HALLBERG RASSY 42 F

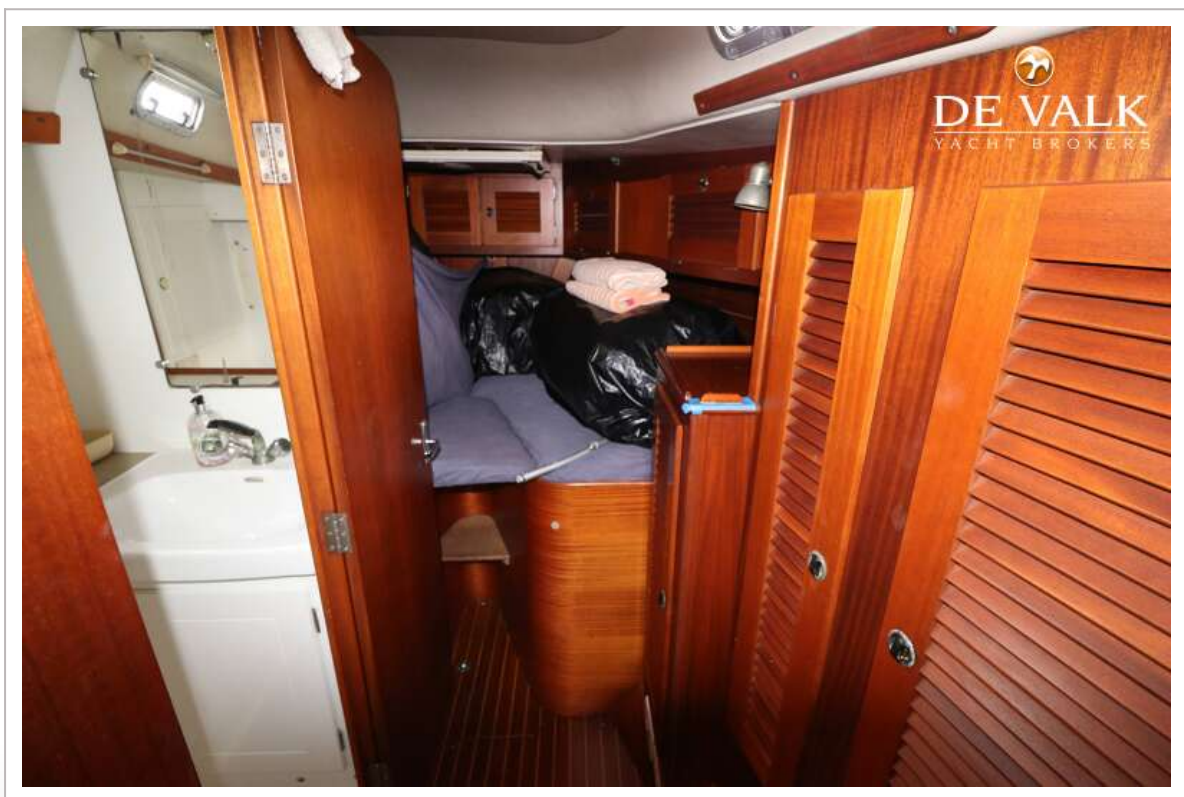
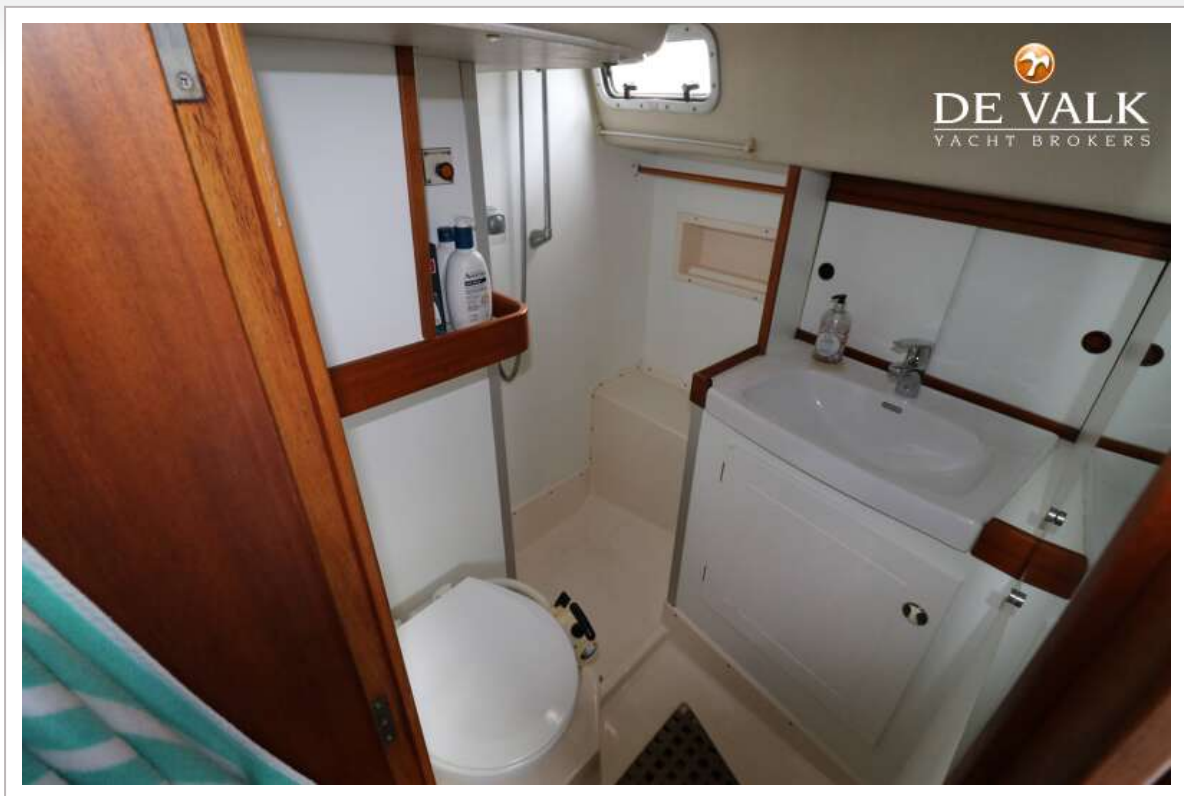


# HALLBERG RASSY 42 F

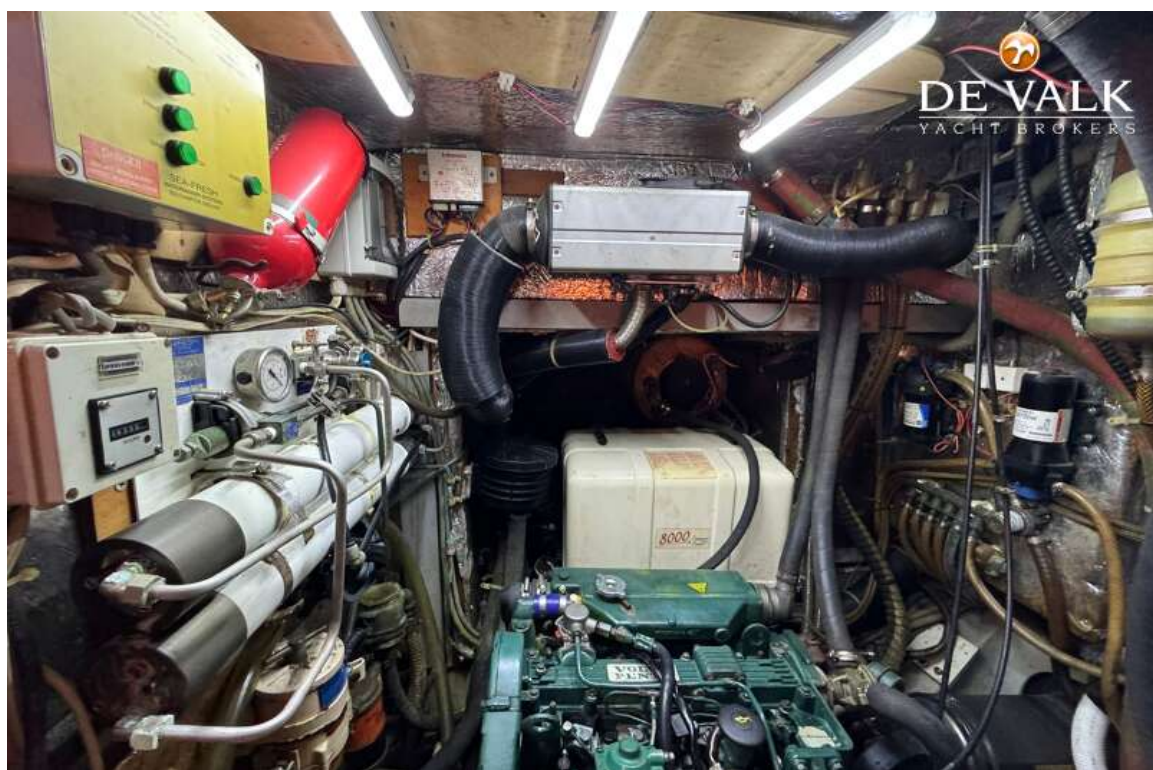
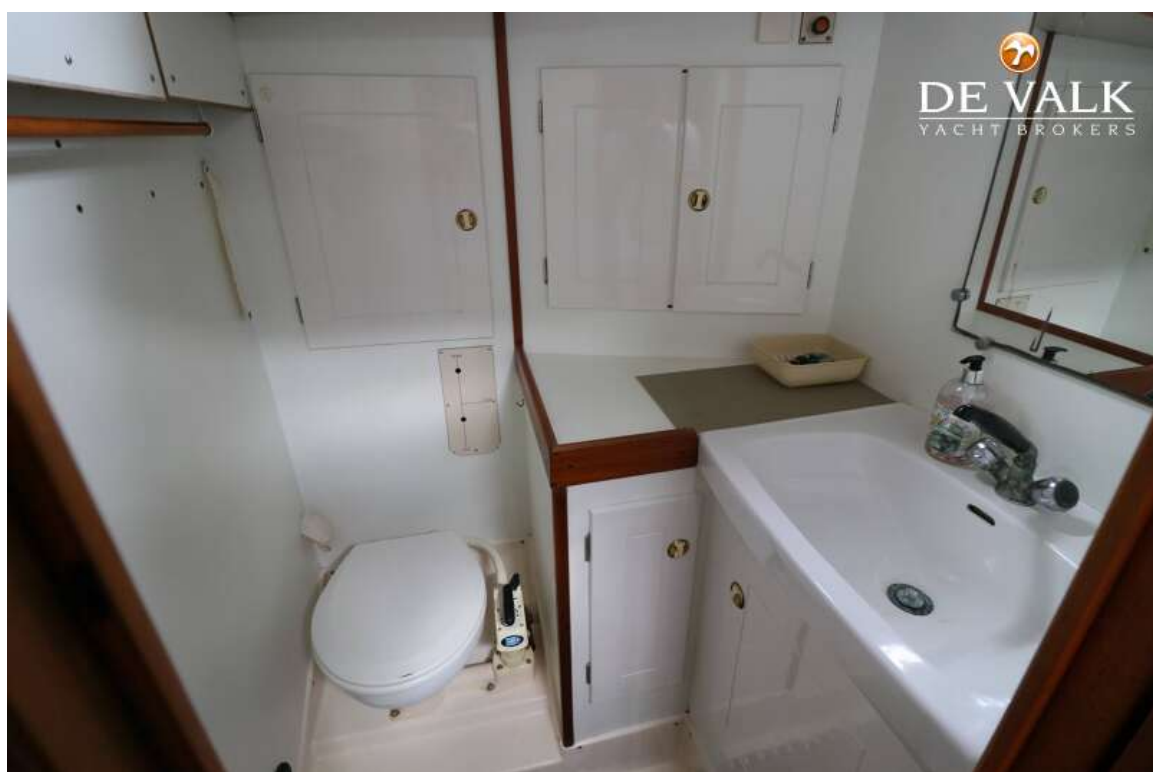




# HALLBERG RASSY 42 F

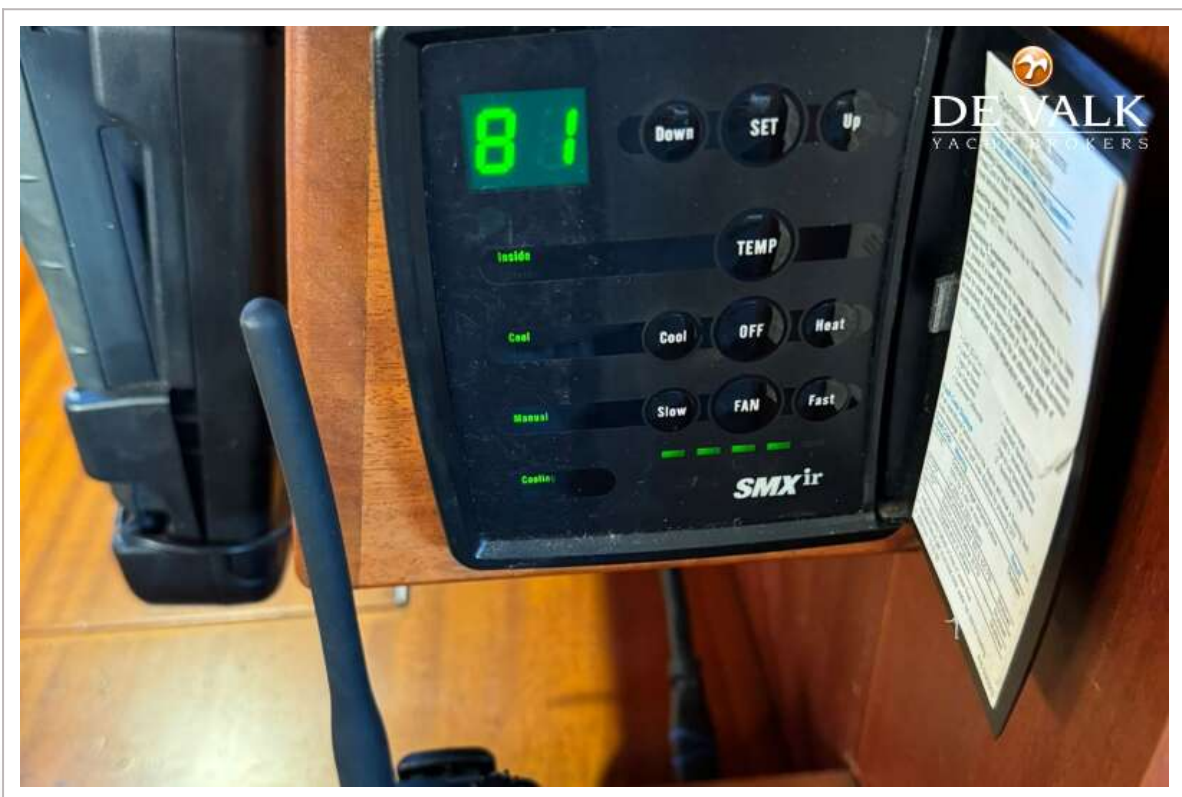


# HALLBERG RASSY 42 F





# HALLBERG RASSY 42 F



# HALLBERG RASSY 42 F

