



## COBRA YACHTS MAESTRO 42



# COBRA YACHTS MAESTRO 42

## BROKER'S COMMENTS

This brand-new Cobra Maestro 42 is well-equipped and comprehensively equipped, making it ready for vacation. With its large, covered cockpit, it offers both sun and shade at all times. This yacht offers ample space for six people to enjoy pleasant hours and days on board. The economical engine also makes longer trips a pleasant option. The berth in western Berlin may be available for transfer.

*Ralph Weil*

## SPECIFICATIONS

<b>Dimensions</b>	12.50 x 3.90 x 0.90 (m)	<b>Builder</b>	Cobra Yacht Sp.z.o.o.
<b>Built</b>	2023	<b>Cabins</b>	3
<b>Material</b>	GRP	<b>Berths</b>	6
<b>Engine(s)</b>	1 x Yanmar 4LV170 diesel	<b>Hp/Kw</b>	170.00 (hp), 125.12 (kw)
<b>Asking price</b>	€ 499.000 (VAT Paid)	<b>Lying</b>	contact Berlin

## CONTACT

<b>Sales office</b>	De Valk Berlin	<b>Telephone</b>	+49 30 325 99 651
<b>Address</b>	Siegfried-Berger Str.13 12557 Berlin DE	<b>E-mail</b>	berlin@devalk.nl

## DISCLAIMER

These particulars are given in good faith as supplied but cannot be guaranteed.



# COBRA YACHTS MAESTRO 42

## GENERAL

Model	COBRA YACHTS MAESTRO 42
Type	motor yacht
LOA (m)	12,50
LWL (m)	11,00
Beam (m)	3,90
Draft (m)	0,90
Air draft min (m)	3,60
Headroom (m)	2,05
Year built	2023
Launched	2023
Builder	Cobra Yacht Sp.z.o.o.
Country	Poland
Displacement (t)	12
CE norm	B
Hull material	GRP
Hull colour	white
Superstructure material	GRP
Rubbing strake	rubber
Deck material	GRP
Deck finish	synthetic teak
Cockpit deck finish	synthetic teak
Antifouling (year)	2023
Window material	tempered glass
Deckhatch	yes
Portholes	yes
Flybridge	yes
Flybridge suncover	yes
Radar arch	non collapsible
Fuel tank (litre)	stainless steel 200
Level indicator (fuel tank)	yes



Freshwater tank (litre)	stainless steel 600
Level indicator (freshwater)	yes
Blackwater tank (litre)	stainless steel 200
Level indicator (blackwater)	yes
Blackwater tank extraction	deck extraction + uw line
Greywater tank (litre)	stainless steel 400
Level indicator (greywater)	yes
Wheel steering	hydraulic
Inside helm position	yes
Flybridge helm position	hydraulic

## ACCOMMODATION

Cabins	3
Berths	6
Floor	wood
Aft deck	yes
Pilot house/deck saloon	with door to starboard sidedeck
Headroom saloon (m)	2,10
Heating	diesel ducted hot air 4 kw in Decksalon
Heating 2	diesel ducted hot air 6 kw for 3 cabins and 2 heads
Air-conditioning	single cycle airco 16.000 BTU for Decksalon
Dinette	yes
Sliding door to cockpit	yes
Galley	yes
Countertop	Quarz Sinter
Sink	stainless steel
Cooker	electric
Microwave/oven combi	yes
Fridge	150 l. incl. freezer compartment second fridge (drawer 30l.)
Hot water system	220V + engine
Water pressure system	electrical



# COBRA YACHTS MAESTRO 42

Dishwasher	yes
Hot water tap	yes
Owners cabin	double bed
Bed length (m)	2,00 x 1,60
Wardrobe	hanging and drawers
Bathroom	en suite
Toilet	en suite
Toilet system	electric
Wash basin	in the bathroom
Shower	en suite
Extra info	32" Smart TV, USB and 230V socket, 2 portholes, deck hatch with mosquito net and blinds
Guest cabin 1	double bed
Bed length (m)	2,00 x 1,40 with comfort mattresses
Wardrobe	hanging and drawers
Toilet	separate
Toilet system	electric
Wash basin	in the bathroom
Shower	Prepared, can be retrofitted
Extra info	shower prepared, can be retrofitted
Guest cabin 2	double bed
Bed length (m)	2,00 x 1,40
Wardrobe	hanging
Bathroom	separate
Toilet	separate
Toilet system	electric
Wash basin	in the bathroom
Extra info	USB and 230V socket, 1 porthole with blind
Flybridge	yes
Wet bar	with fridge and grill

## MACHINERY



# COBRA YACHTS MAESTRO 42

No of engines	1
Make	Yanmar
Type	4LV170
HP	170
kW	125.12
Fuel	diesel
Year installed	2023
Maximum speed (kn)	11
Cruising speed (kn)	9
Engine hours	75
Engine cooling system	freshwater heat exchanger
Drive	shaft
Engine controls	electrical
Bowthruster	electric 125 kgf
Sternthruster	electric 125 kgf
Exhaust	watercooled
Propeller type	fixed
Electric bilge pump	yes
Bilge alarm	yes
Electrical installation	yes
Generator	4 kW Picollo
Start battery	1 x 110 AH
Service battery	3 x 220 AH
Generator battery	1 x 75 AH
Sternthruster battery	220 AH
Battery monitor	yes
Battery charger	50 A
Inverter	3000 W
Shorepower	with cable

## NAVIGATION



# COBRA YACHTS MAESTRO 42

Electric compass	yes
Multi control display	yes
Depth sounder	yes
Depth sounder/log	yes
Log	yes
Rudder angle indicator	Helm & Fly
Plotter/GPS	12,2" Helm 9,9" Flybridge
Electronis chart(s)	yes
Navigation lights	yes

## EQUIPMENT

Cockpit cover	Flybridge and side decks
Winter cover	covers entire yacht
Cockpit cushions	yes
Cockpit table	yes
Cockpit chairs	yes
Bathing platform	yes
Boarding ladder	stainless steel Premium version
Deck shower	W/k
Anchor	20 Kg Delta
Anchor chain	50m. 8mm
Windlass	electrical
Deck wash	10 m. hose
Sea railing	stainless steel
Grab rail (superstructure)	stainless steel
Wiper	2 x
Window ventilator	yes
Horn	electric
Fenders	yes
Mooring lines	yes
TV	42" with lift in salon Glomex Antenna V912EC



# COBRA YACHTS MAESTRO 42

**Radio**

Fusion RA50, Bluetooth

**Cockpit speakers**

2 x Fusion EL602 2 x Fusion EL602 Flybridge

**Speakers in salon**

2 x Fusion EL602





# COBRA YACHTS MAESTRO 42



# COBRA YACHTS MAESTRO 42





# COBRA YACHTS MAESTRO 42



# COBRA YACHTS MAESTRO 42





# COBRA YACHTS MAESTRO 42



# COBRA YACHTS MAESTRO 42

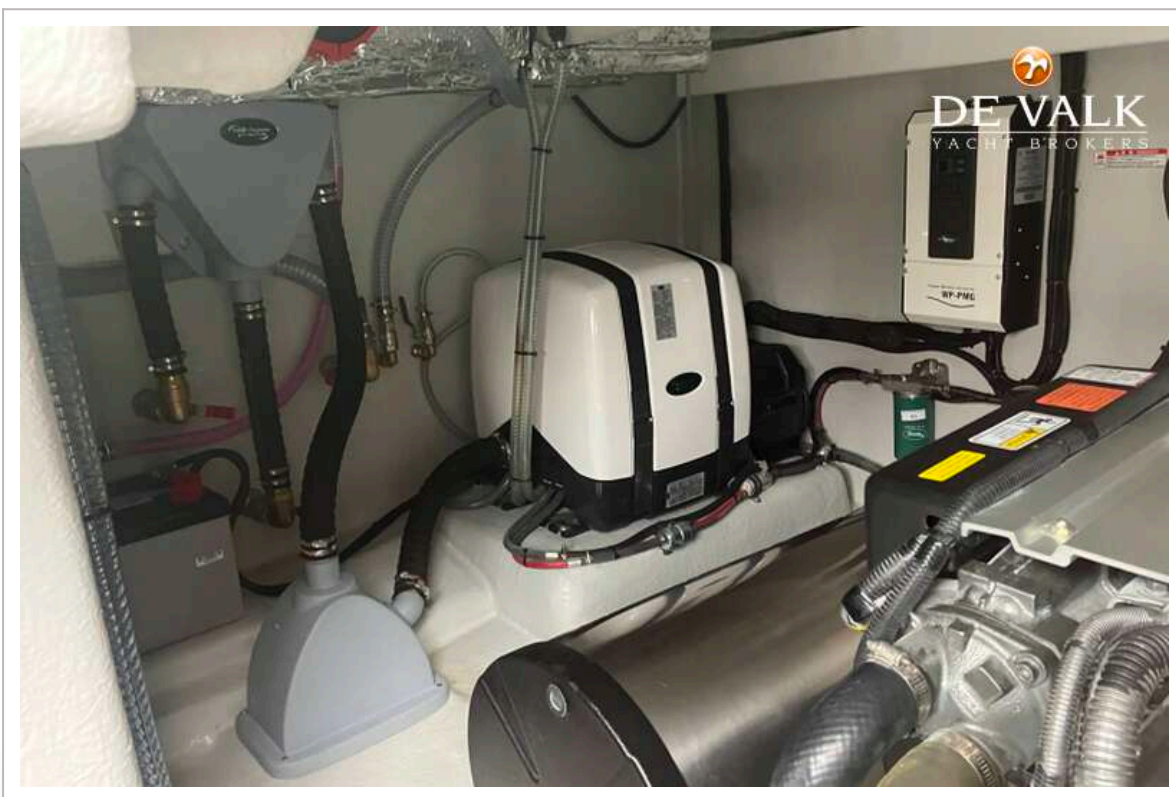




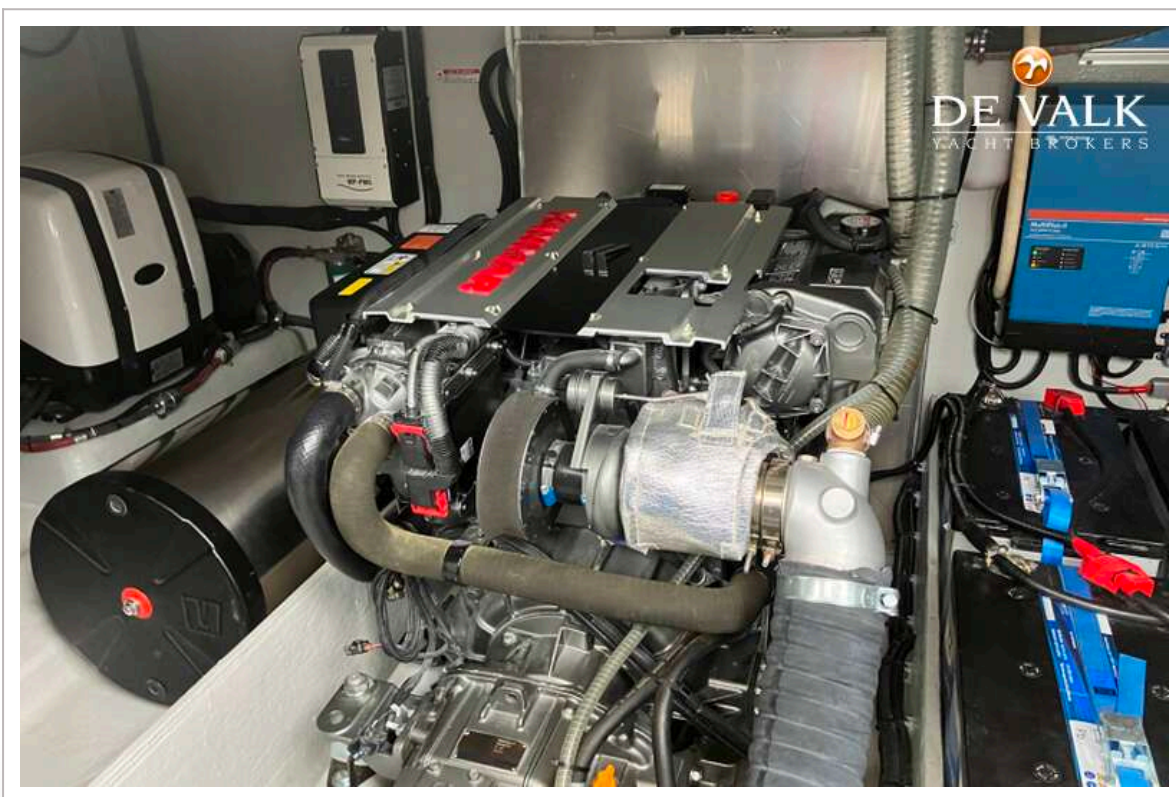
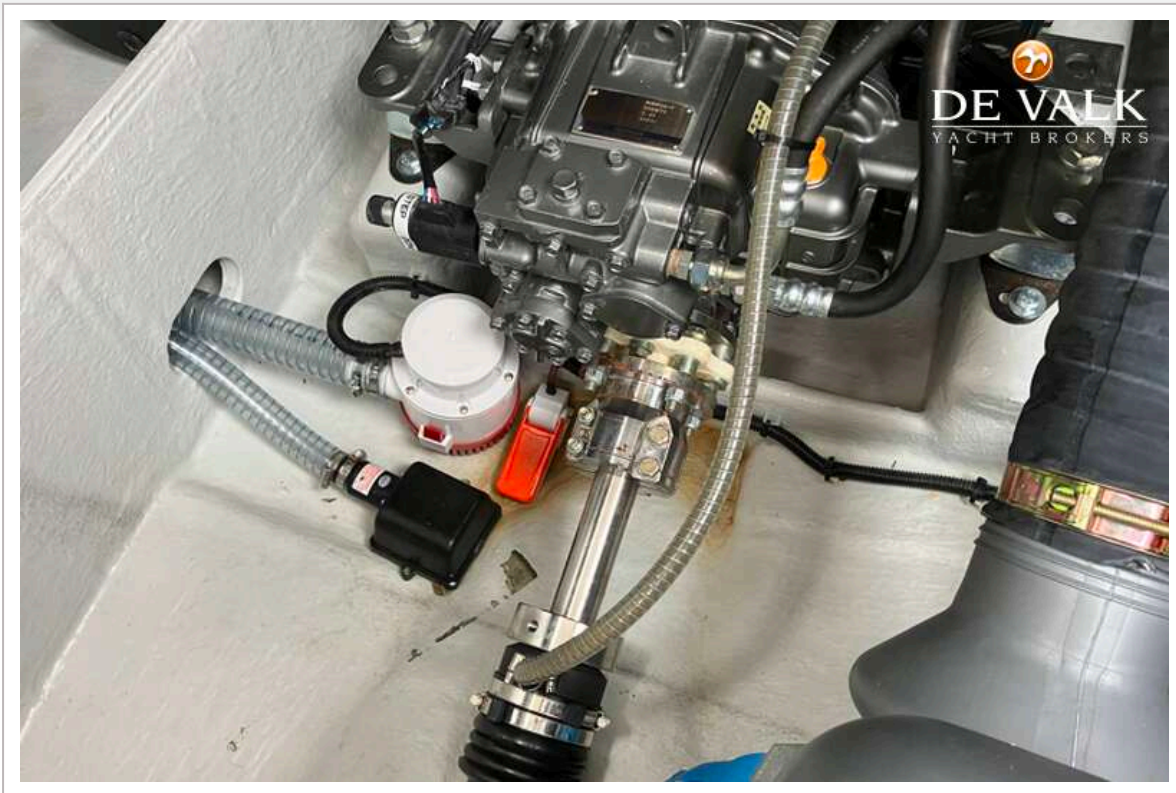
# COBRA YACHTS MAESTRO 42



# COBRA YACHTS MAESTRO 42





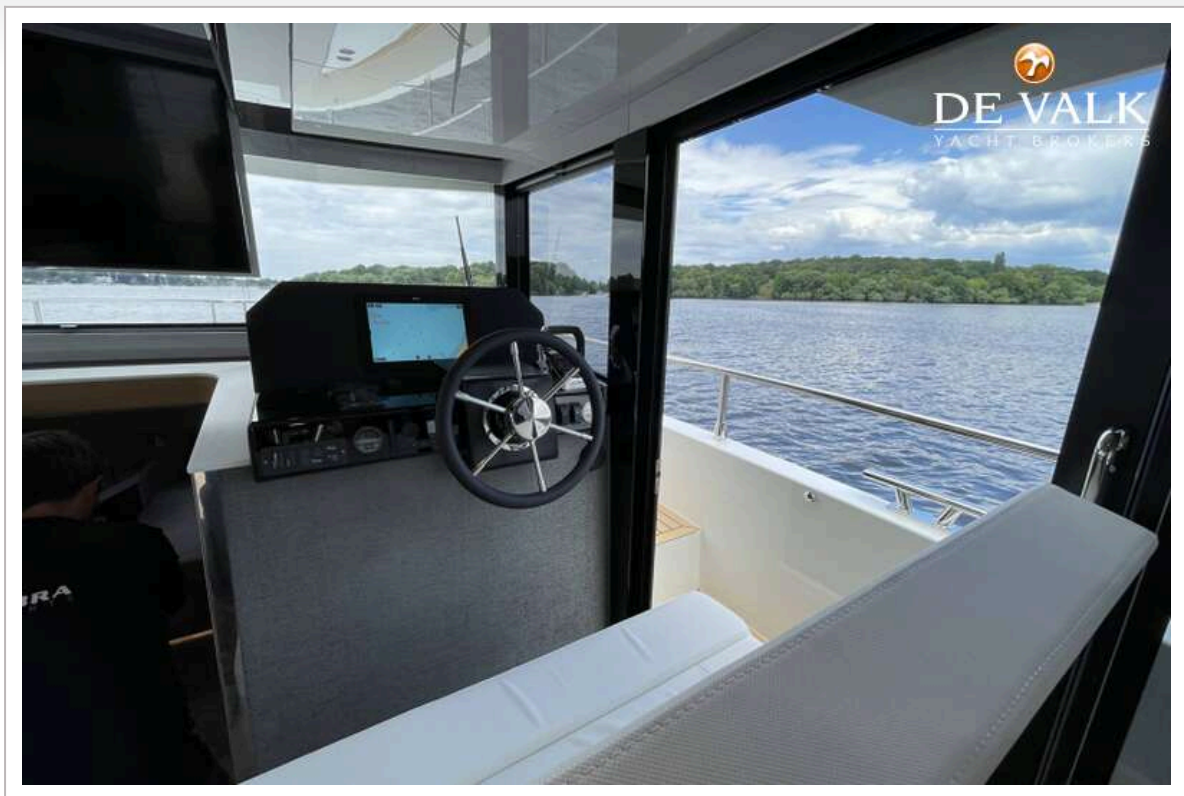




# COBRA YACHTS MAESTRO 42

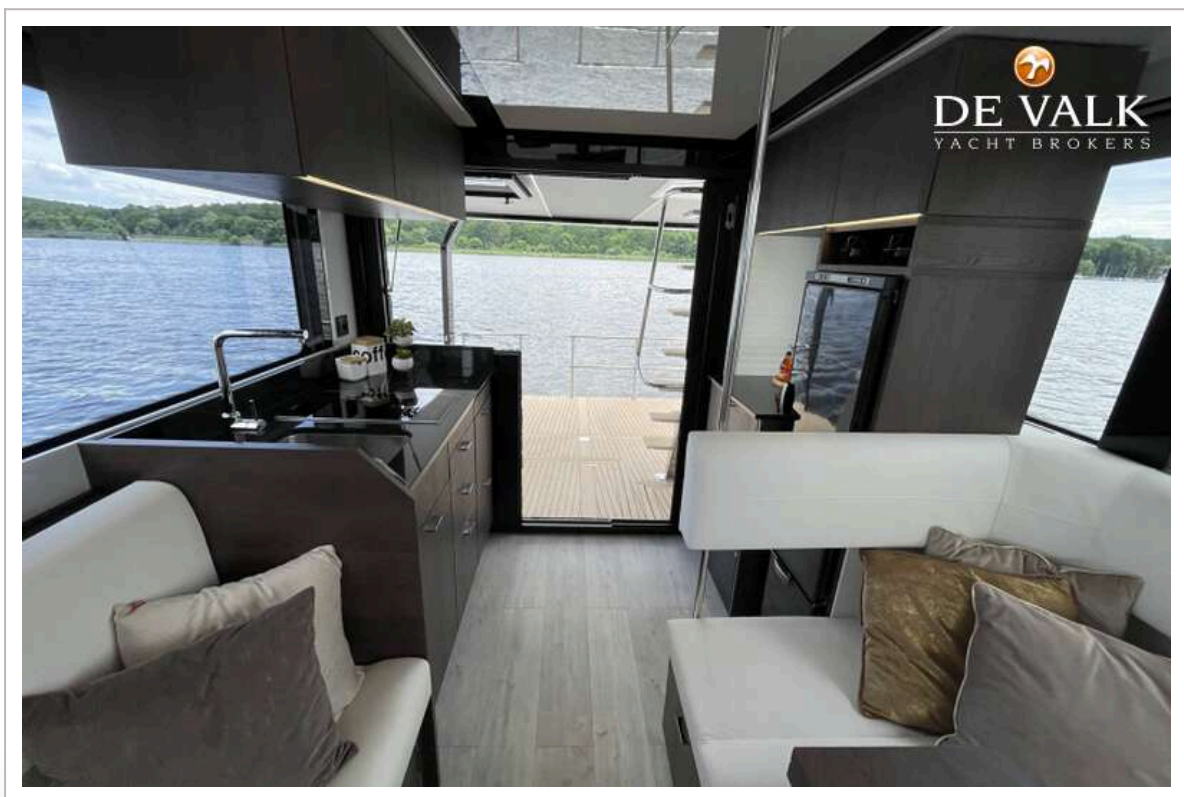


# COBRA YACHTS MAESTRO 42

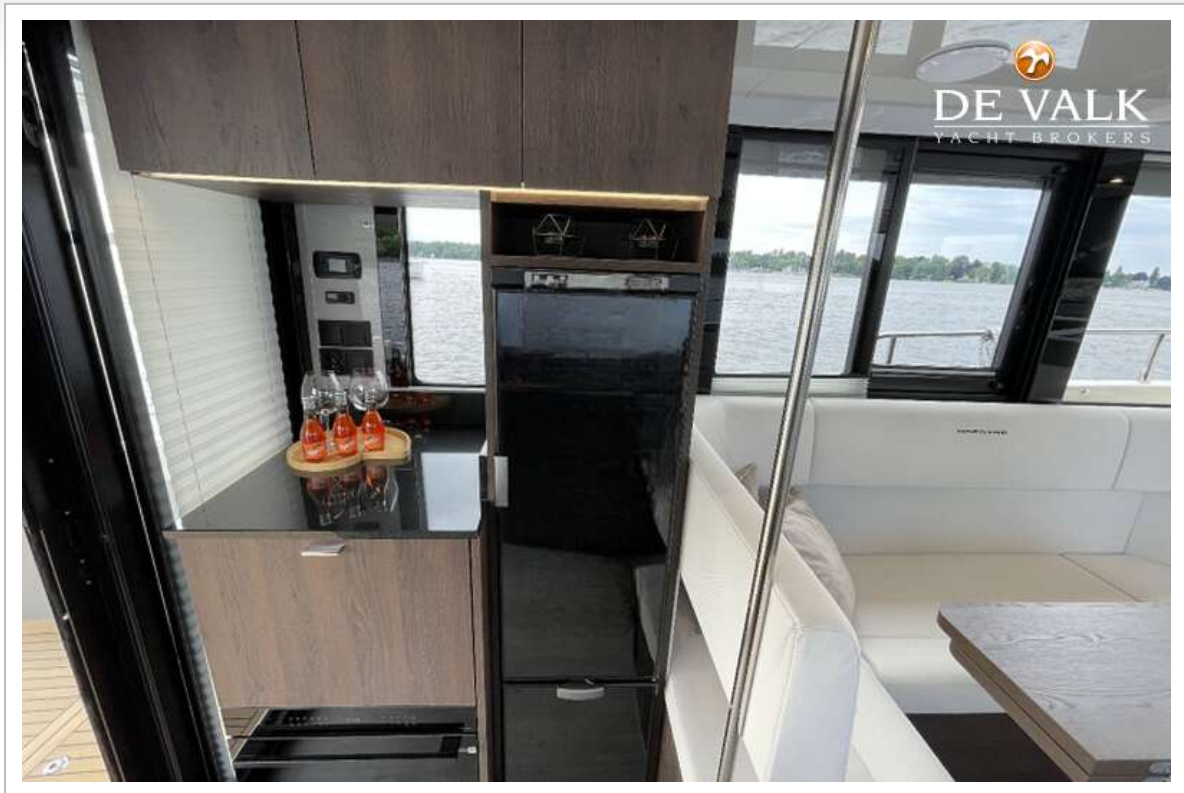




# COBRA YACHTS MAESTRO 42



# COBRA YACHTS MAESTRO 42

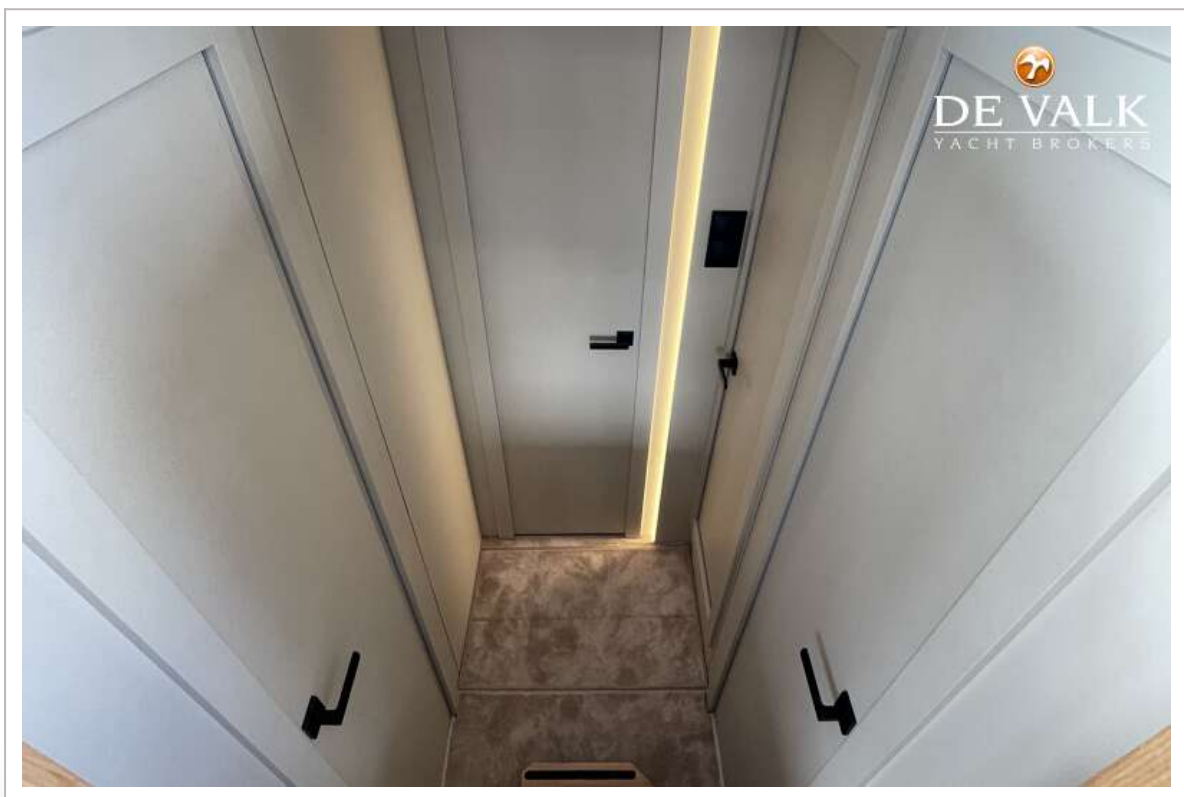




# COBRA YACHTS MAESTRO 42

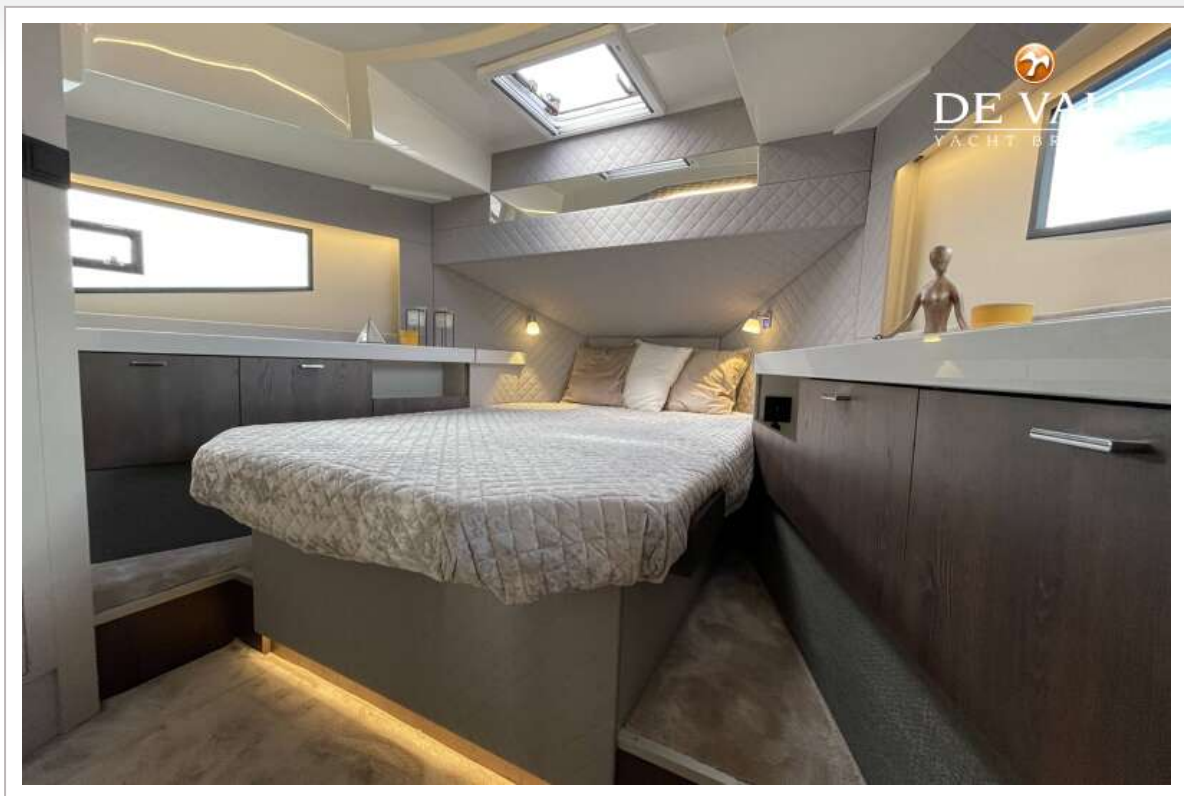


# COBRA YACHTS MAESTRO 42



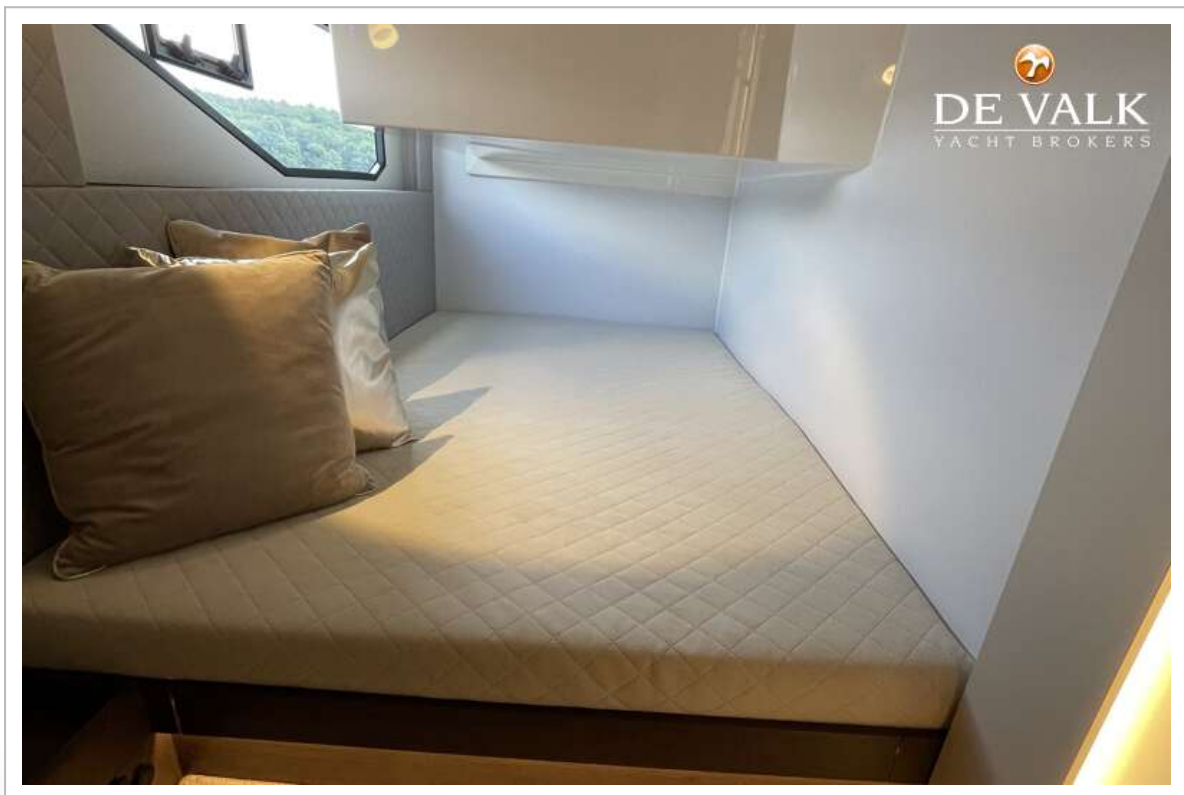
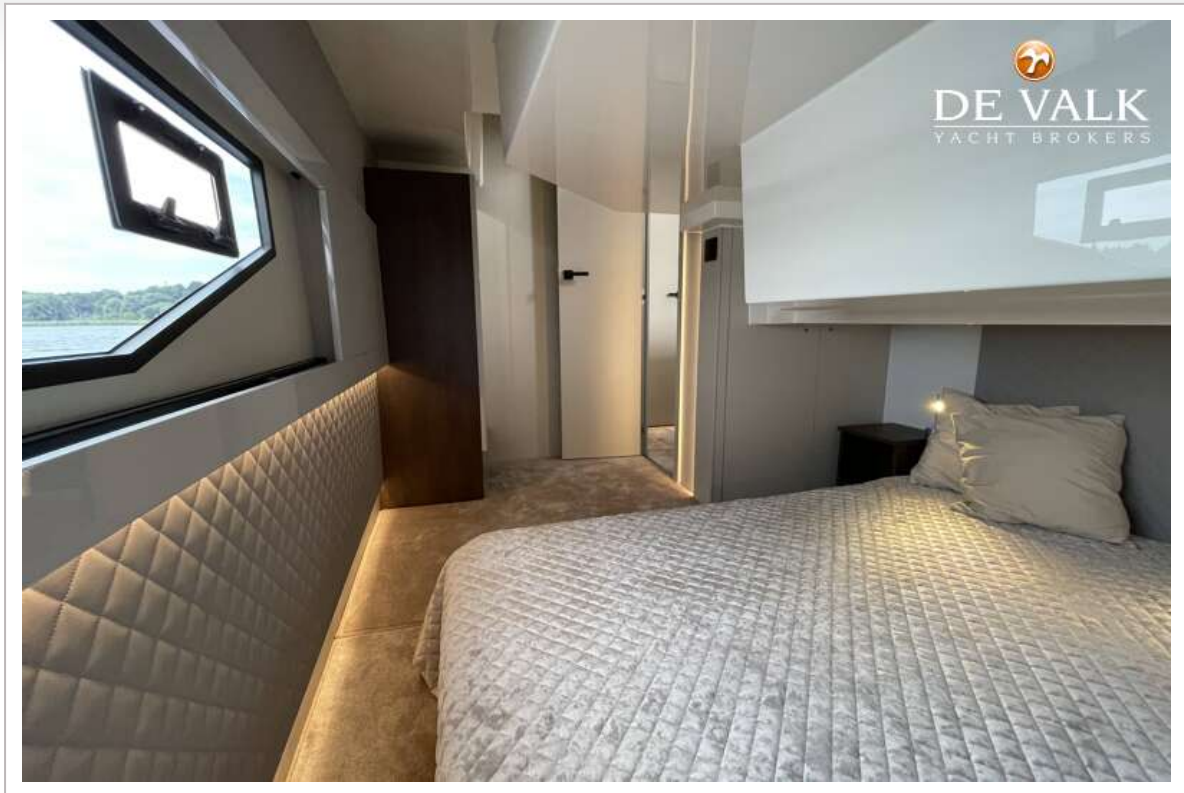


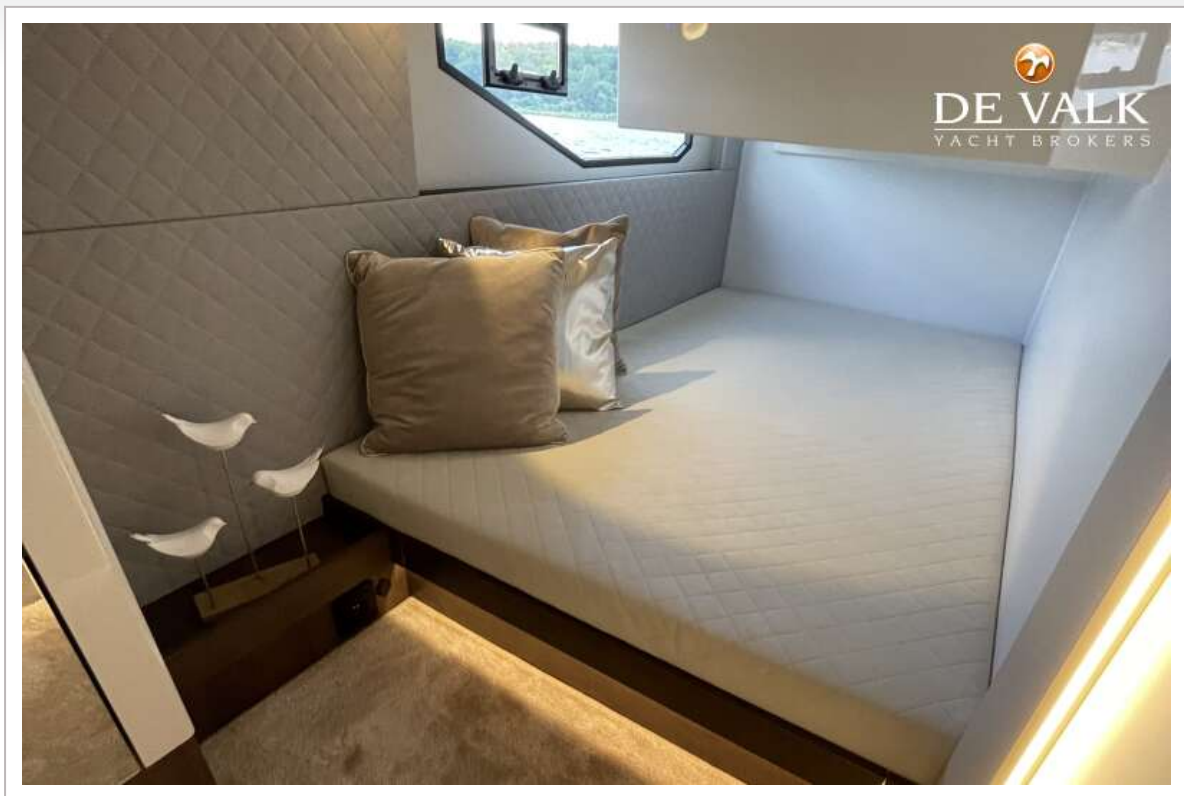
# COBRA YACHTS MAESTRO 42



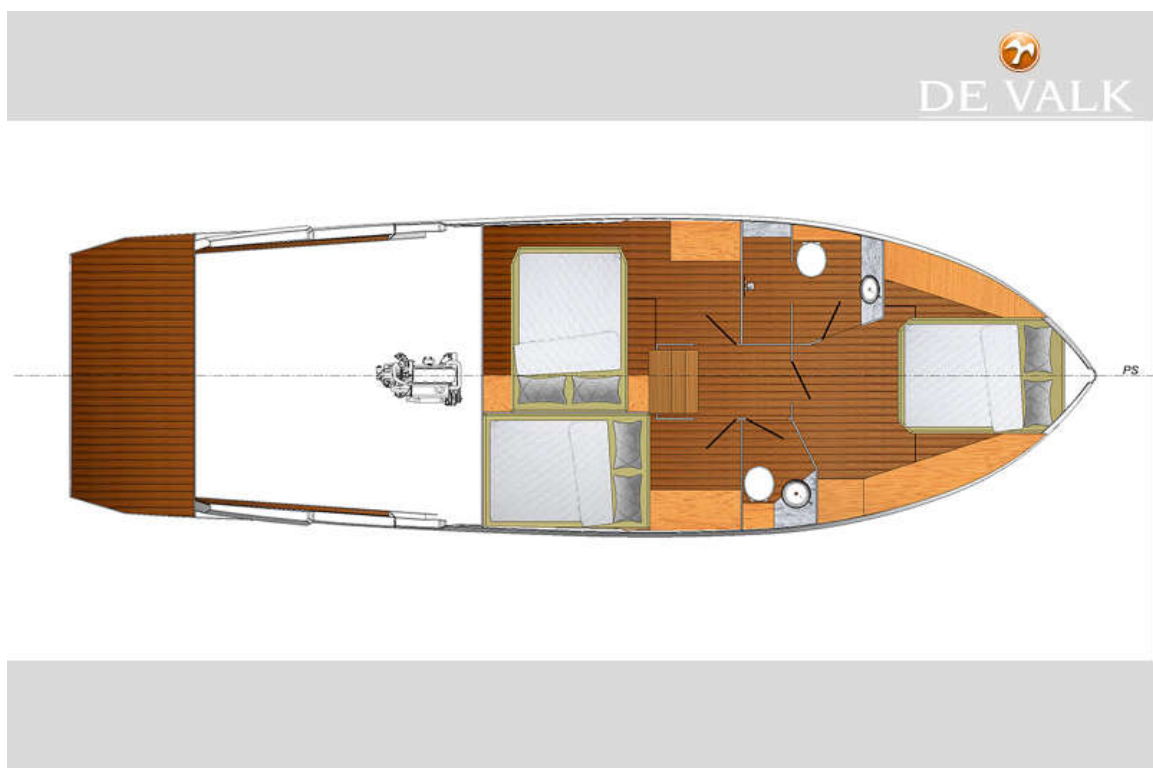


# COBRA YACHTS MAESTRO 42





# COBRA YACHTS MAESTRO 42





# COBRA YACHTS MAESTRO 42

