



DE VALK  
YACHT BROKERS



CONTEST 45CS



DE VALK  
YACHT BROKERS

BROKERAGE | CHARTER | BERTHS | FINANCE | INSURANCE | YACHT MANAGEMENT

# CONTEST 45CS

## BROKER'S COMMENTS

The Contest 45CS is a superb blend of performance and luxury from a renowned Dutch shipyard. She offers excellent sailing abilities, easily handled by a small crew, and delivers comfort and security for long passages or coastal cruising. Her elegant lines, spacious deck layout, and beautifully crafted interior make her a joy both under sail and at anchor. Well maintained and equipped for serious cruising, this Contest 45CS represents a rare chance to own a high-quality yacht that combines style, safety, and enduring value. Early viewing recommended!

*Johan Schootstra*

## SPECIFICATIONS

<b>Dimensions</b>	13.70 x 4.10 x 1.95 (m)	<b>Builder</b>	Conyplex
<b>Built</b>	2011	<b>Cabins</b>	2
<b>Material</b>	GRP	<b>Berths</b>	4
<b>Engine(s)</b>	1 x Yanmar 4JH4 TCE diesel	<b>Hp/Kw</b>	75.00 (hp), 55.20 (kw)
<b>Asking price</b>	€ 469.000 (VAT Paid)	<b>Lying</b>	at sales office

## CONTACT

<b>Sales office</b>	De Valk Hindeloopen B.V.	<b>Telephone</b>	+31 514 52 40 00
<b>Address</b>	Oosterstrand 1 8713 JS Hindeloopen NL	<b>E-mail</b>	hindeloopen@devalk.nl

## DISCLAIMER

These particulars are given in good faith as supplied but cannot be guaranteed.



## GENERAL

Model	CONTEST 45CS
Type	sailing yacht
LOA (m)	13,70
LWL (m)	11,64
Beam (m)	4,10
Draft (m)	1,95
Air draft (m)	22,50
Headroom (m)	2,00
Year built	2011
Builder	Conyplex
Country	The Netherlands
Designer	Georg Nissen - Birgit Schnaase
Displacement (t)	13,5
Ballast (tonnes)	lead 5.1
CE norm	A
Hull material	GRP
Hull colour	off-white
Hull shape	round-bilged
Keel type	Performance keel with bulb in lead
Superstructure material	GRP
Rubbing strake	Stainless steel on teak
Deck material	GRP
Deck finish	teak   Vacuum laid
Superstructure deck finish	teak   Vacuum laid
Cockpit deck finish	teak   Vacuum laid
Antifouling (year)	04-2025
Window material	tempered glass
Deckhatch	6x
Fuel tank (litre)	polyethylene   300 ltr.
Level indicator (fuel tank)	VDO



<b>Freshwater tank (litre)</b>	polyethylene   430 ltr.
<b>Level indicator (freshwater)</b>	yes
<b>Blackwater tank (litre)</b>	polyethylene   2x 45 ltr.
<b>Level indicator (blackwater)</b>	Indicating full or empty.
<b>Blackwater tank extraction</b>	deck extraction + uw line
<b>Wheel steering</b>	rack & pinion JEFA   Fully balanced composite spade rudder.
<b>Outside helm position</b>	yes
<b>Emergency tiller</b>	yes

## ACCOMMODATION

<b>Cabins</b>	2
<b>Berths</b>	4
<b>Interior</b>	teak   Matt varnished with chrome fittings throughout
<b>Layout</b>	The boat features a front cabin, a comfortable saloon, a fully equipped galley, an aft cabin, and two bathrooms.
<b>Floor</b>	Oak floor
<b>Saloon</b>	2 x Pouf in the saloon with quick release fittings for easy stowage while sailing
<b>Headroom saloon (m)</b>	2 mtr.
<b>Heating</b>	Websasto AirTop  Evo M
<b>Navigation center</b>	yes
<b>Chart table</b>	yes
<b>Aft Cabin</b>	Spacious owner's cabin featuring a comfortable French bed and a private ensuite bathroom.
<b>Dinette</b>	Saloon table with diagonal sliding function for effortless access and relaxed lounging or dining.
<b>Galley</b>	Well-designed galley on the port side, offering generous headroom between 1.88 and 2.25 meters – combining comfort with practicality.
<b>Countertop</b>	corian
<b>Sink</b>	stainless steel
<b>Cooker</b>	calor gas   Force10   3 burner
<b>Oven</b>	In cooker



Microwave	Siemens
Fridge	Frigonautica Barco Stainless steel
Freezer	Frigonautica Barco Stainless steel
Hot water system	220V + engine   Isotemp boiler 40 ltr.
Water pressure system	electrical
Owners cabin	French bed   In aft cabin with 1.88 meters of headroom.
Bed length (m)	2 mtr.
Wardrobe	hanging/drawers/shelves
Bathroom	en suite
Toilet	Vetus
Toilet system	electric
Wash basin	Corian
Shower	yes
Guest cabin 1	v-bed   In forward cabin with 1.90 meters of headroom.
Bed length (m)	2 mtr.
Wardrobe	hanging and shelves
Bathroom	en suite
Toilet	Jabsco
Toilet system	manual
Wash basin	Corian
Shower	yes

## MACHINERY

No of engines	1
Make	Yanmar
Type	4JH4 TCE
HP	75
kW	55.20
Fuel	diesel
Year installed	2011
Maximum speed (kn)	8,5



Cruising speed (kn)	7,5
Engine cooling system	freshwater heat exchanger
Drive	sail-drive
Saildrive seal	???
Engine controls	bowden cable
Bowthruster	electric
Exhaust	watercooled   with double water lock
Propeller type	folding
Propeller blades	3
Manual bilge pump	Manual bilge pump in engine room
Electric bilge pump	Electric bilge pump in keel sump, with automatic switch
Bilge alarm	yes
Electrical installation	12 , 24 and 220 Volt
Start battery	50 Ah Optima Red Top
Service battery	24 volt   6x Mastervolt MVG Gel 12/85Ah   new 05-2024
Battery monitor	Mastervolt Mass inverter charger control
Battery charger	Mastervolt Chargemaster 12/10
Inverter	Mastervolt 24VDC / 12VDC Mastervolt 24VDC / 24VDC
Battery charger/inverter	Mastervolt Mass Combi 24/2000-60
Shorepower	with cable

## NAVIGATION

Compass	Suunto on steering pedestal
Multi control display	2x Raymarine ST60+ Graphic
Depth sounder	Raymarine ST60+ Depth
Log	Raymarine ST60+ Speed
Windset	Raymarine ST60+ Wind Raymarine ST60+ CH Wind
VHF	2x Raymarine Ray 240E with a loudspeaker
Autopilot	Raymarine ST6002
Radar	Raymarine
Radar/GPS/plotter	Raymarine E90 W



Navigation lights

yes

## EQUIPMENT

Sprayhood

yes

Cockpit table

yes

Bathing platform

yes

Boarding ladder

stainless steel

Bow ladder

yes

Deck shower

yes

Anchor

CQR Plough

Anchor chain

yes

Windlass

electrical | Lewmar

Capstan

yes

Sea railing

yes

Grab rail (superstructure)

stainless steel

Railing side opening gates

yes

Pushpit

Stainless steel construction with two folding teak seats.

Pulpit

Stainless steel with teak step

Fenders

yes

Mooring lines

yes

TV

Toshiba

Radio-cd player

Alpine

Cockpit speakers

yes

Speakers in salon

yes

## RIGGING

Rigging

Fractional sloop| 9/10 rigged

Standing rigging

wire

Brand mast

Seldén

Material mast

aluminium

Spreaders

2x swept back spreaders



Keel stepped mast	yes
Mainsail	North Sails
Stoway mast	Seldén electric
Genoa	North Sails
Genoa furler	Furlex 400S
Reefing System	main in-mast furling
Backstay adjuster	hydraulic   Manually operated
Boomvang	gasspring   Seldén Rodkicker
Primary sheet winch	2x Lewmar 46
Genoa sheetwinches	2x Lewmar 54 electric
Halyard winches	2x Lewmar 46 on mast
Jockey-pole	stainless steel





# CONTEST 45CS



# CONTEST 45CS

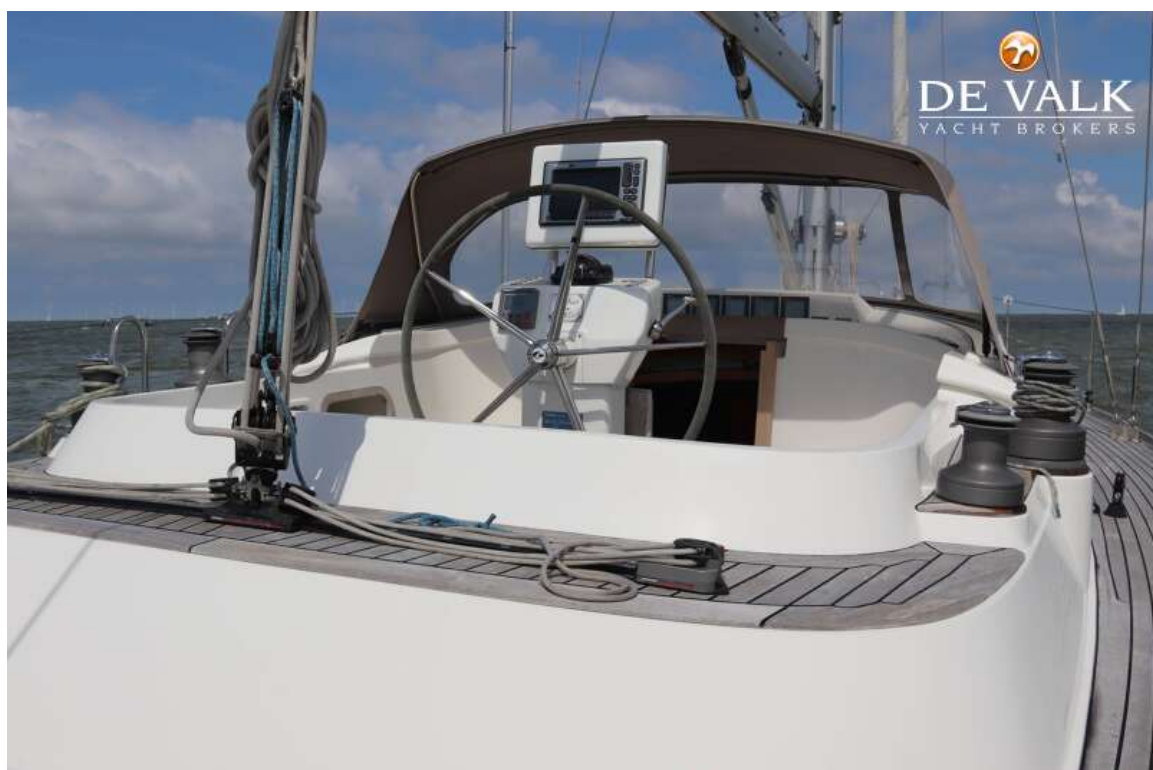




# CONTEST 45CS



# CONTEST 45CS





# CONTEST 45CS



# CONTEST 45CS





# CONTEST 45CS



# CONTEST 45CS



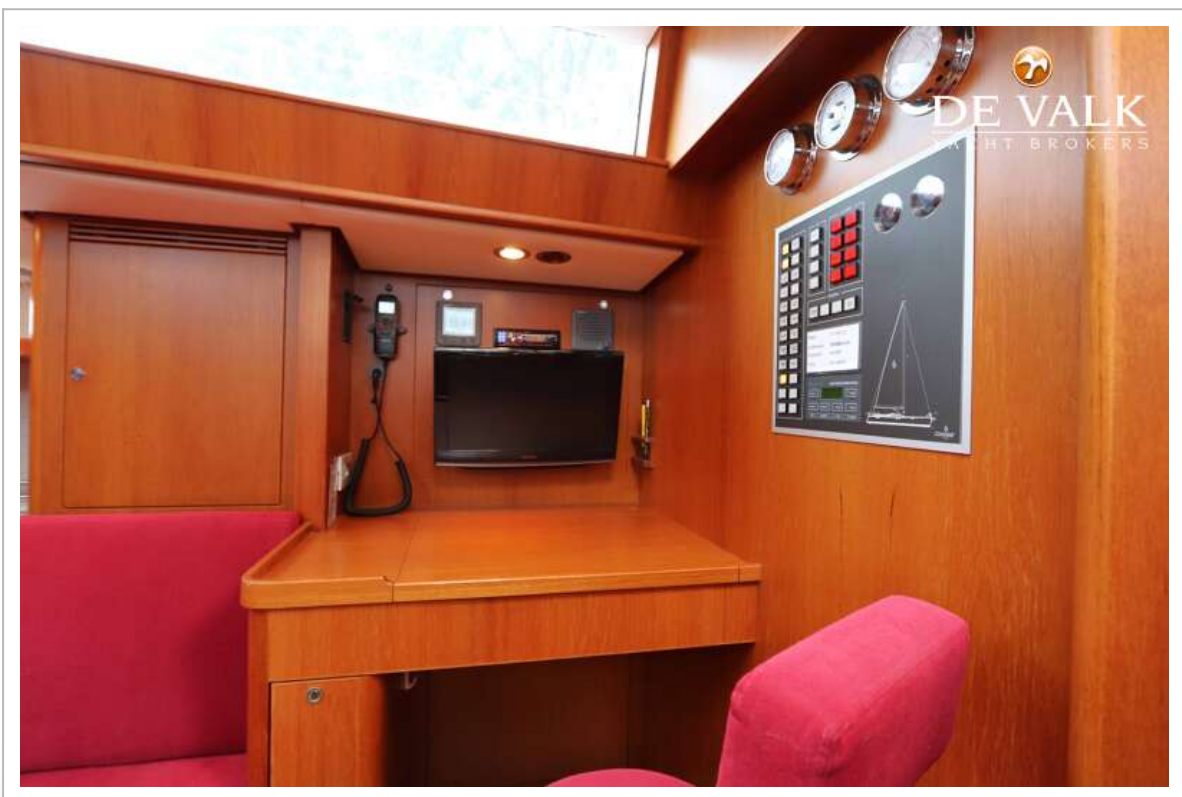
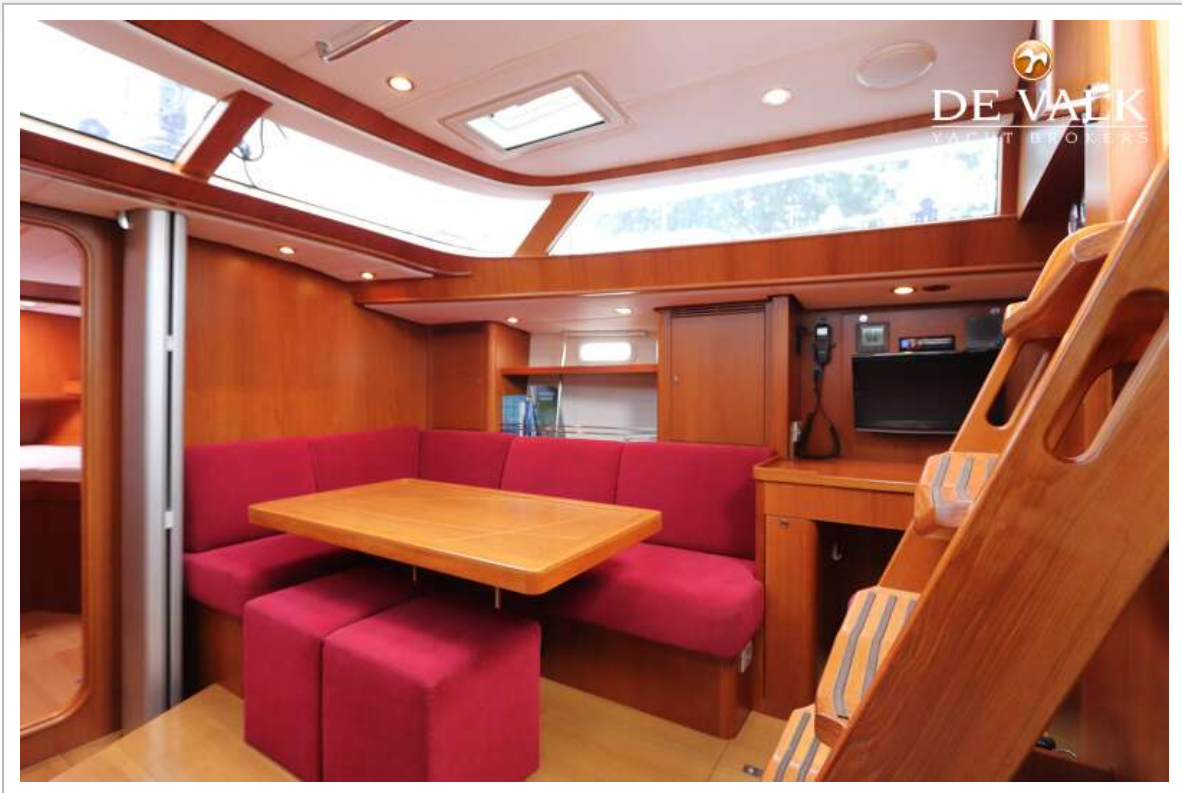




# CONTEST 45CS



# CONTEST 45CS





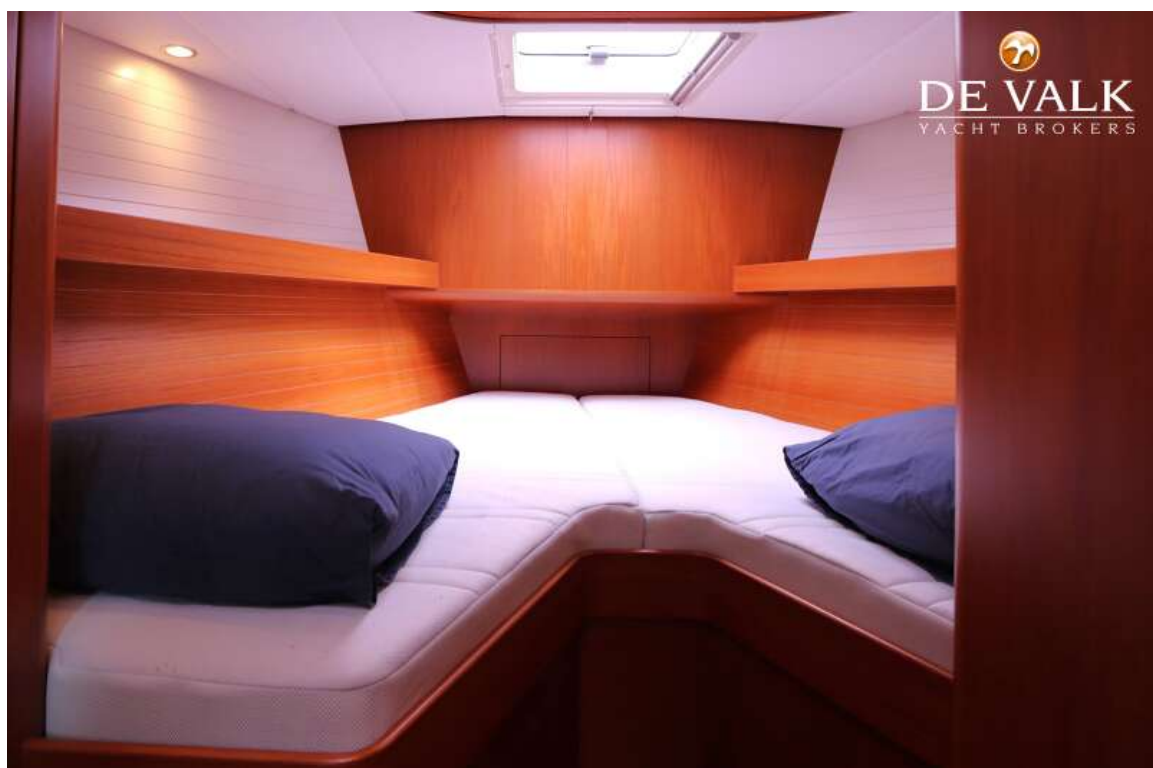
# CONTEST 45CS



# CONTEST 45CS



# CONTEST 45CS





# CONTEST 45CS



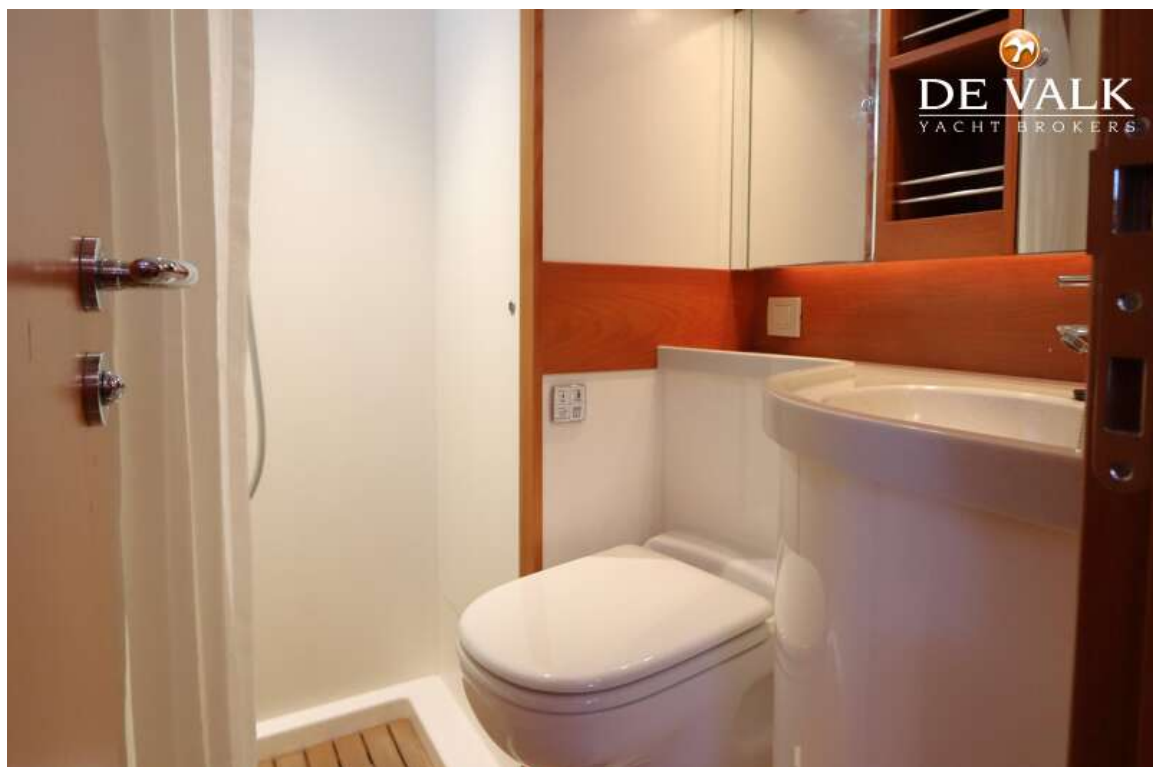
# CONTEST 45CS





# CONTEST 45CS





# CONTEST 45CS

