



DE VALK  
YACHT BROKERS



## GRUNO 35 S COMPACT



DE VALK  
YACHT BROKERS

# GRUNO 35 S COMPACT

## BROKER'S COMMENTS

The Gruno 35s Compact is a classical, solid and well built cruiser for inland and coastal waterways. This yacht offers living space for up to 4 persons. The upper saloon is light and roomy, the dinette and galley provide cosiness and everyday living quality. "Helli" comes from long term ownership and in clean and well maintained state. Visitation recommended. Located in Hamburg.

*Jürgen Jacobs*

## SPECIFICATIONS

<b>Dimensions</b>	11.00 x 3.70 x 0.00 (m)	<b>Builder</b>	Jachtwerf Gruno B.V.
<b>Built</b>	1999	<b>Cabins</b>	4
<b>Material</b>	Steel	<b>Berths</b>	2
<b>Engine(s)</b>	1 x Perkins M135 diesel	<b>Hp/Kw</b>	135.00 (hp), 99.36 (kw)
<b>Asking price</b>	€ 99.000 (VAT Paid)	<b>Lying</b>	contact Hamburg

## CONTACT

<b>Sales office</b>	De Valk Hamburg	<b>Telephone</b>	+49 40 46 000 999
<b>Address</b>	Domstraße 11 20095 Hamburg DE	<b>E-mail</b>	hamburg@devalk.nl

## DISCLAIMER

These particulars are given in good faith as supplied but cannot be guaranteed.



# GRUNO 35 S COMPACT

## GENERAL

Model	GRUNO 35 S COMPACT
Type	motor yacht
LOA (m)	11,00
Beam (m)	3,70
Air draft (m)	1,85
Year built	1999
Builder	Jachtwerf Gruno B.V.
Country	The Netherlands
Displacement (t)	8,5
CE norm	B
Hull material	steel
Hull colour	white
Rubbing strake	stainless steel
Deck material	steel
Deck finish	paint
Antifouling (year)	2025
Fuel tank (litre)	500L
Level indicator (fuel tank)	yes
Freshwater tank (litre)	500L
Level indicator (freshwater)	yes
Blackwater tank (litre)	180L
Level indicator (blackwater)	yes
Wheel steering	yes
Inside helm position	yes
Outside helm position	yes

## ACCOMMODATION

Cabins	4
Berths	2
Interior	oak



# GRUNO 35 S COMPACT

Floor	teak and holly
Aft deck	yes
Deck saloon	yes
Heating	diesel ducted hot air Webasto Diesel
Aft Cabin	yes
Dinette	yes
Dinette to convert into berth	yes
Opening door to aft deck	yes
Galley	yes
Countertop	plastic
Sink	yes
Cooker	calor gas
Gas alarm	Truma Gas remote switch
Fridge	yes
Hot water system	by engine
Water pressure system	yes
Owners cabin	double bed
Bathroom	separate
Toilet	separate
Toilet system	manual Jabsco, large seat
Shower	separate

## MACHINERY

No of engines	1
Make	Perkins
Type	M135
HP	135
kW	99.36
Fuel	diesel
Engine hours	1890
Engine cooling system	freshwater heat exchanger



# GRUNO 35 S COMPACT

Drive	shaft
Engine controls	bowden cable
Bowthruster	electric Vetus 6PS
Propeller type	fixed
Propeller blades	4
Propeller shaft material	stainless steel
Manual bilge pump	yes
Electric bilge pump	yes
Electrical installation	12V
Start battery	New in 2024
Service battery	yes
Bowthruster battery	yes
Windlass battery	yes
Battery charger	yes
Shorepower	with cable

## NAVIGATION

Compass	yes
Multi control display	Vetus Combi 3
Depth sounder/log	Vetus Combi 3
VHF	yes
Rudder angle indicator	yes
Navigation lights	yes

## EQUIPMENT

Cockpit cover	Needs service
Cockpit table	yes
Cockpit chairs	yes
Bathing platform	yes
Boarding ladder	yes
Transom door	yes



# GRUNO 35 S COMPACT

Deck shower	yes
Anchor	yes
Anchor chain	yes
Windlass	Needs repair or exchange
Sea railing	yes
Railing side opening gates	yes
Pulpit	yes
Wiper	yes
Horn	yes
Fenders	yes
Mooring lines	yes
Radio-cd player	Car Radio
Speakers in salon	yes
Clock - barometer	yes
Fire extinguisher	yes





# GRUNO 35 S COMPACT



# GRUNO 35 S COMPACT





# GRUNO 35 S COMPACT



# GRUNO 35 S COMPACT

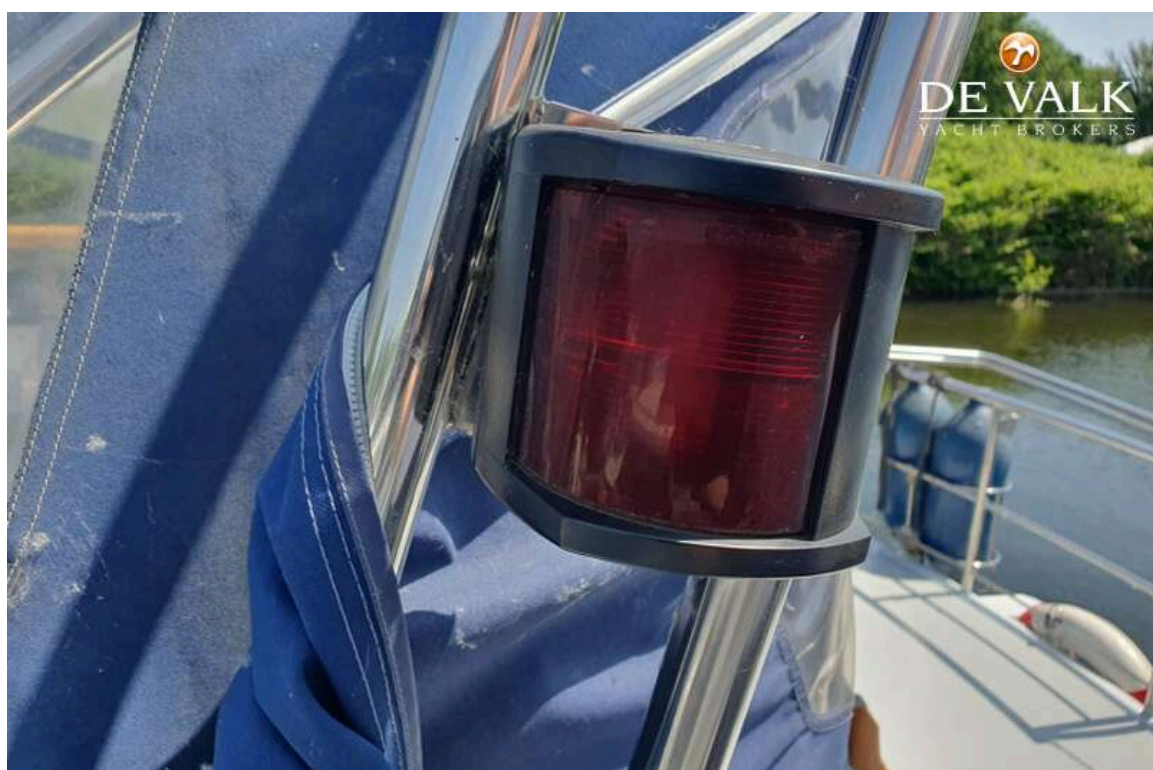




# GRUNO 35 S COMPACT



# GRUNO 35 S COMPACT





# GRUNO 35 S COMPACT

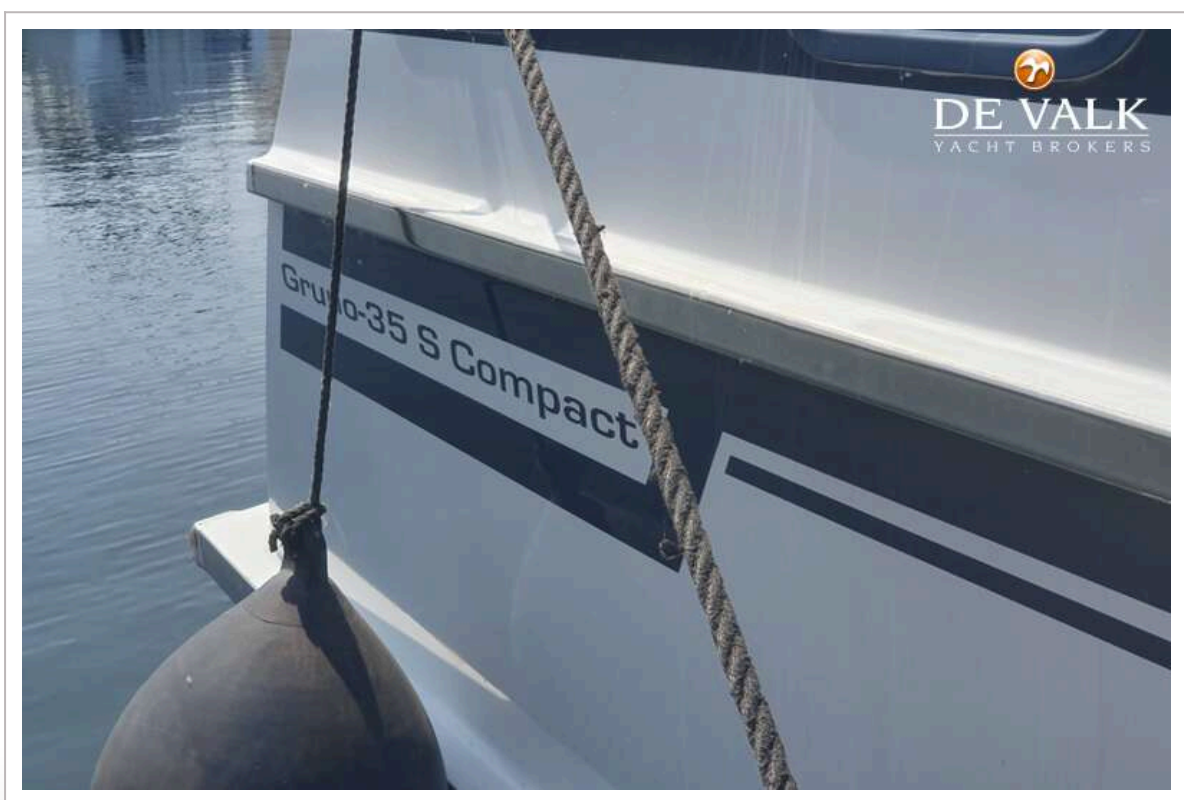


## GRUNO 35 S COMPACT





# GRUNO 35 S COMPACT



# GRUNO 35 S COMPACT



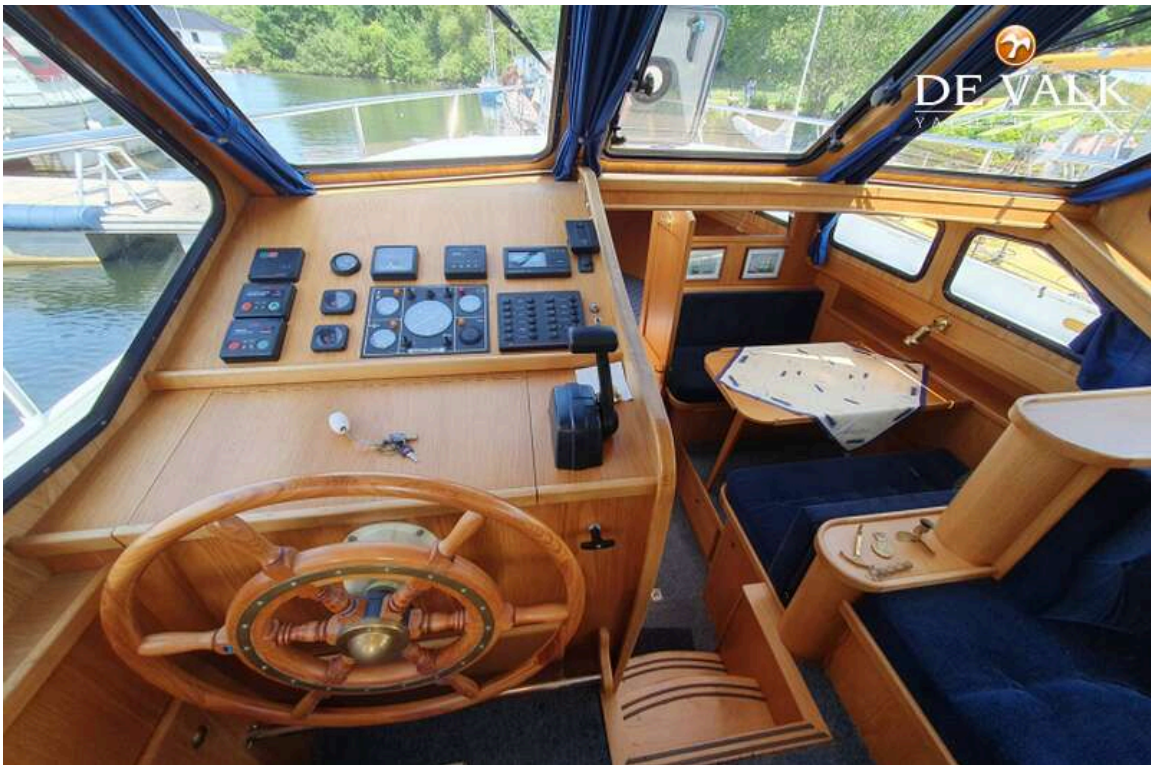


# GRUNO 35 S COMPACT



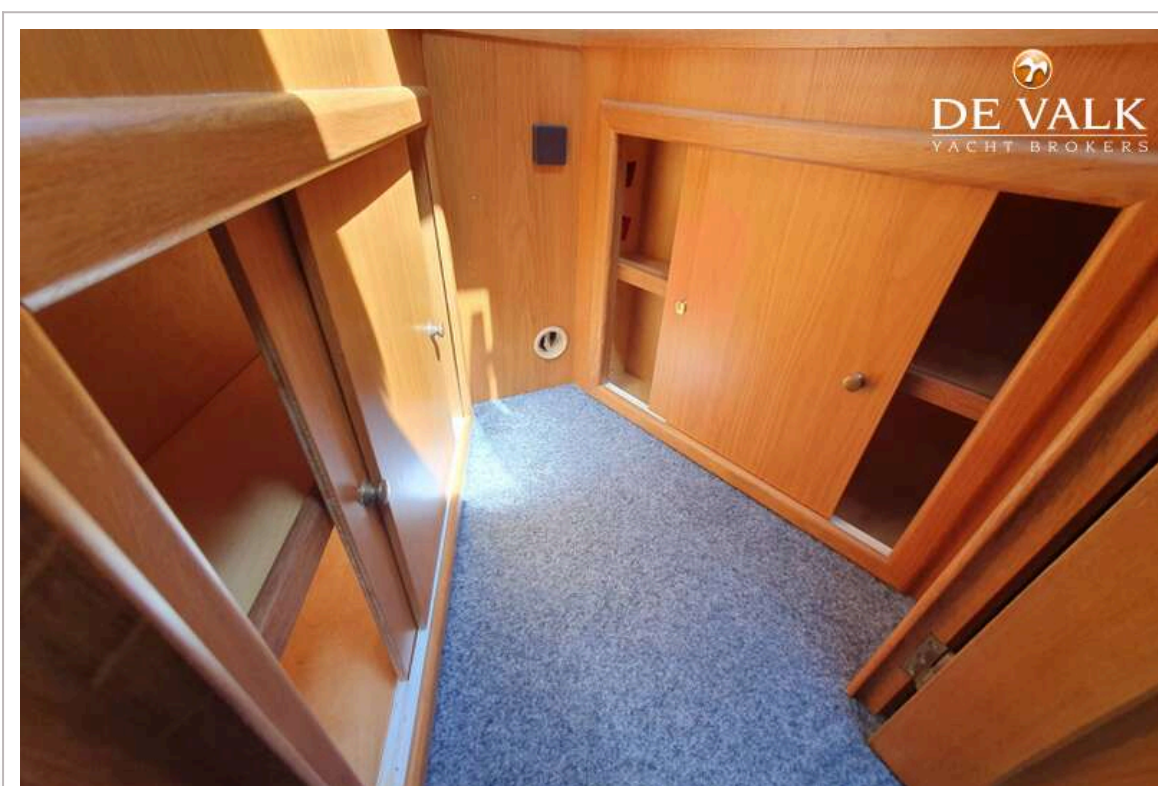


# GRUNO 35 S COMPACT

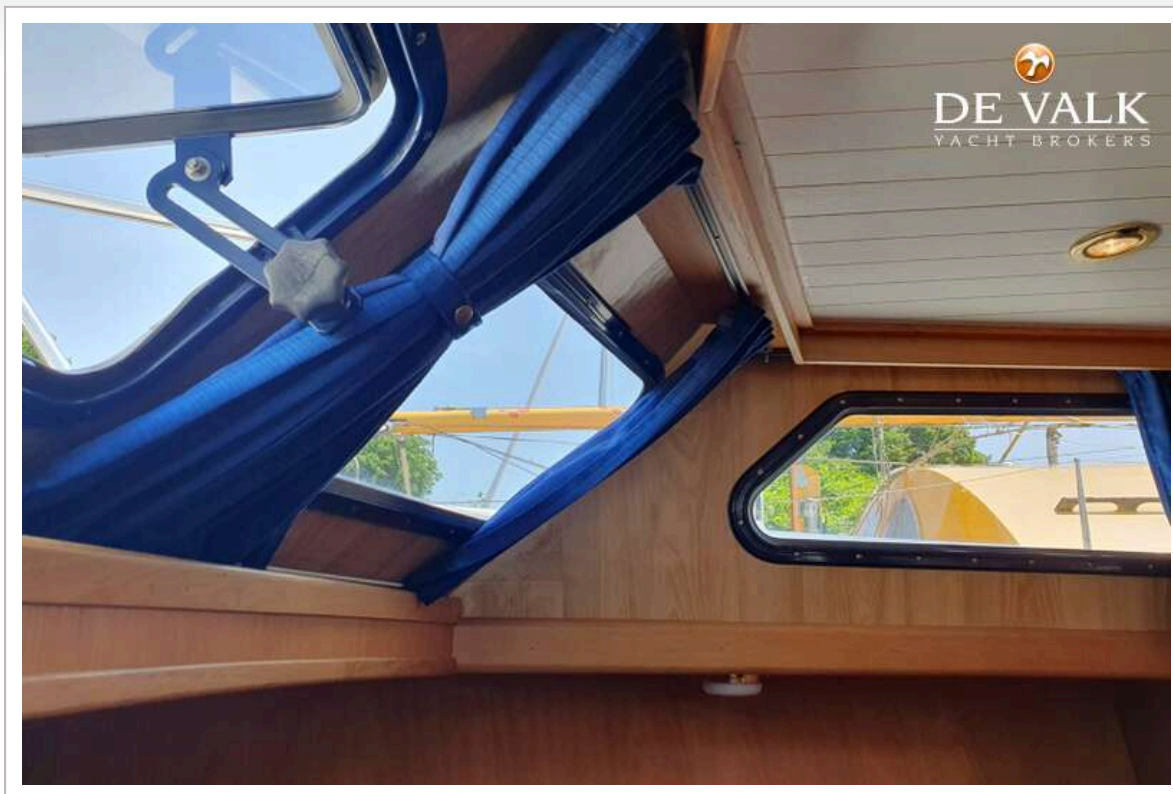




# GRUNO 35 S COMPACT



# GRUNO 35 S COMPACT

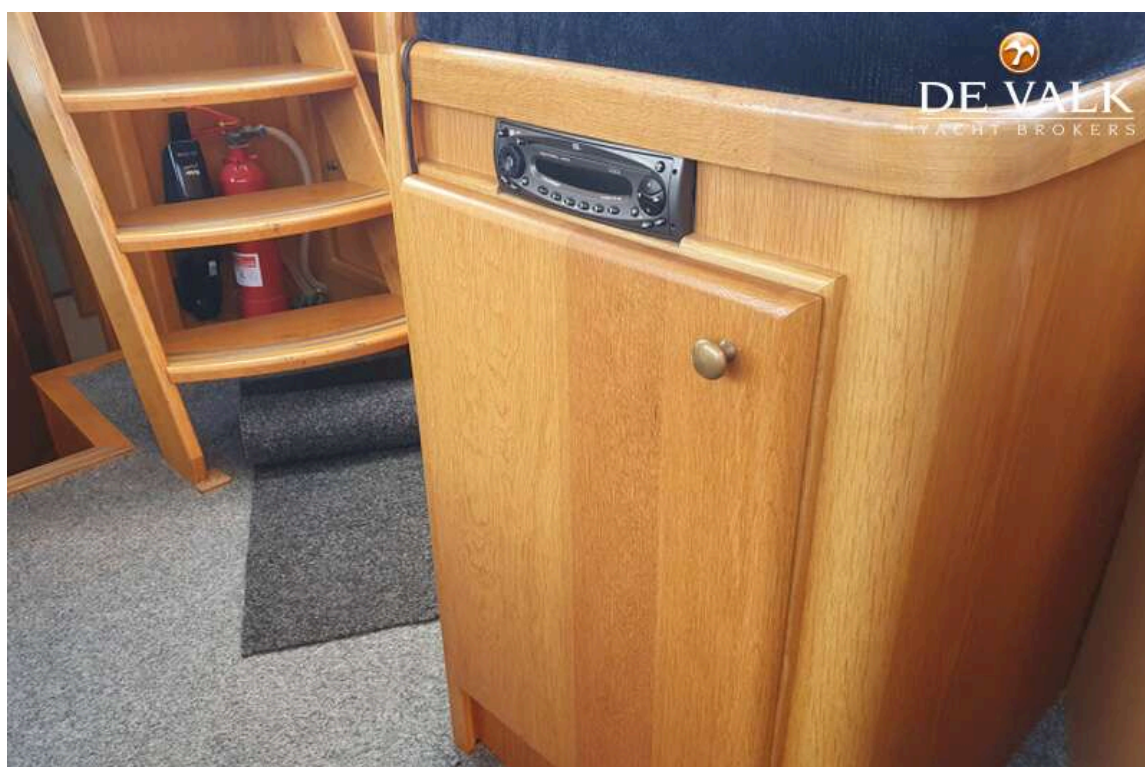




# GRUNO 35 S COMPACT



# GRUNO 35 S COMPACT

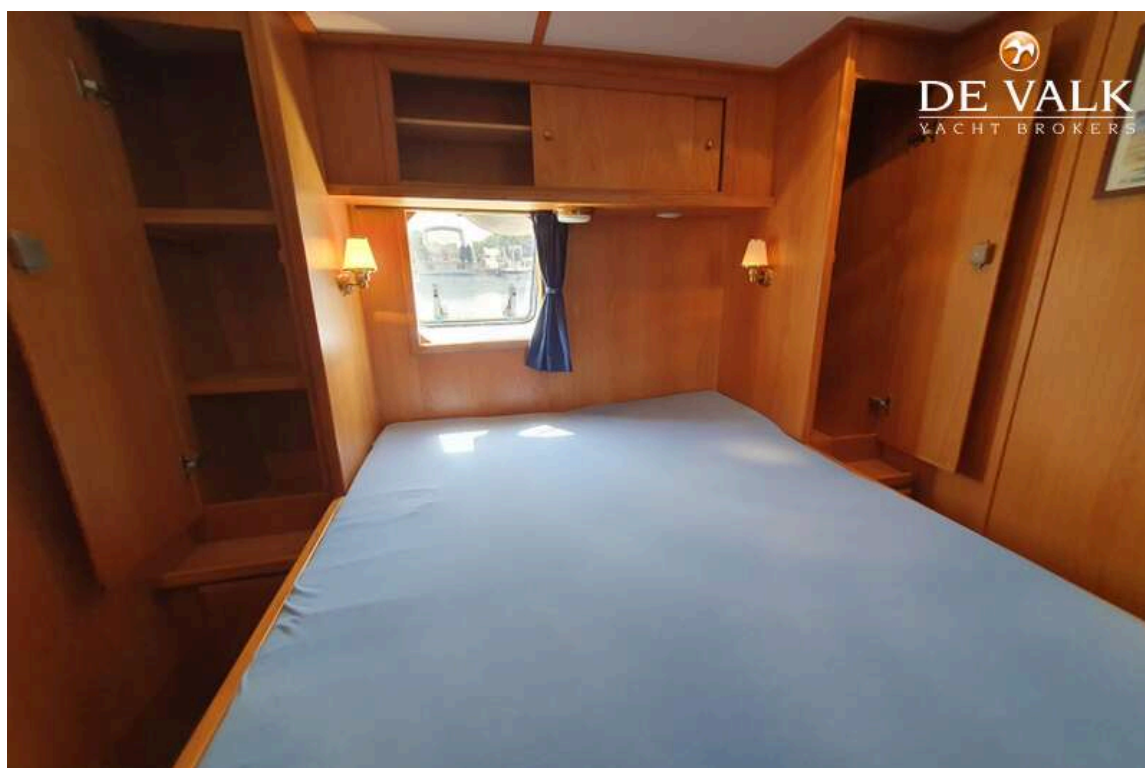




# GRUNO 35 S COMPACT



## GRUNO 35 S COMPACT





# GRUNO 35 S COMPACT

