



DE VALK
YACHT BROKERS



ALM LUXE MOTOR



DE VALK
YACHT BROKERS

BROKER'S COMMENTS

Imagine yourself aboard this luxurious Alm Schippersjacht, also known as a luxe motor. With a clearance of just 3.45m, it's perfect for cruising Europe's inland waterways. And thanks to rotorswing stabilizers, it's also sea-ready. Travel in comfort from the Baltic to the Med. But don't just imagine it. Come see for yourself in Sneek. *Easy Rider* is ready for easy cruising.

Mark Hesselmans

SPECIFICATIONS

Dimensions	21.50 x 4.95 x 1.40 (m)	Builder	De Alm Jachtbouw
Built	2018	Cabins	3
Material	Steel	Berths	6
Engine(s)	1 x John Deere 6068 - SFM diesel	Hp/Kw	400.00 (hp), 294.40 (kw)
Asking price	€ 950.000 (VAT Paid)	Lying	at sales office

CONTACT

Sales office	De Valk Sneek	Telephone	+31 (0)515 42 80 30
Address	Zwolsmanweg 7 8606 KC Sneek NL	E-mail	sneek@devalk.nl

DISCLAIMER

These particulars are given in good faith as supplied but cannot be guaranteed.



GENERAL

Model	ALM LUXE MOTOR
Type	motor yacht
LOA (m)	21,50
Beam (m)	4,95
Draft (m)	1,40
Air draft (m)	10,50
Air draft min (m)	3,45
Year built	2018
Builder	De Alm Jachtbouw
Country	The Netherlands
Displacement (t)	75
CE norm	B
Hull material	steel
Hull colour	Dark blue
Hull shape	round-bilged
Superstructure material	steel
Deck material	steel
Deck finish	non-skid paint
Cockpit deck finish	teak
Dorades	yes
Window material	double glazing
Deckhatch	yes
Portholes	yes
Mast can be lowered	electric
Fuel tank (litre)	5.000 l. in 3 tanks
Level indicator (fuel tank)	yes
Freshwater tank (litre)	3.200 l.
Level indicator (freshwater)	yes
Blackwater tank (litre)	1.300 l.
Level indicator (blackwater)	yes



Blackwater tank extraction	deck extraction + uw line
Wheel steering	hydraulic
Inside helm position	yes
Emergency tiller	yes
Extra info	Wheelhouse is constructed of steel and painted with a wood print

ACCOMMODATION

Cabins	3
Berths	6
Interior	mahogany Classic wood paneling
Floor	carpet
Pilot house/deck saloon	yes
Saloon	yes
Heating	central heating Post Caminus
Air-conditioning	reverse cycle airco Webasto
Chart table	yes
Opening door to cockpit	yes
Opening door to aft deck	As well as port and starboard side doors
Galley	yes
Countertop	granite
Sink	stainless steel
Cooker	calor gas Boretti 5 burner
Oven	AEG
Extractor	yes
Gas alarm	yes
Microwave/oven combi	AEG
Fridge	In galley and wheelhouse
Hot water system	on central heating
Water pressure system	electrical
Dishwasher	AEG
Owners cabin	double bed



Wardrobe	walk-in closet
Bathroom	en suite
Toilet	en suite
Toilet system	electric
Wash basin	in the bathroom
Shower	en suite
Bath tub	en suite
Guest cabin 1	twin single
Wardrobe	hanging and shelves
Bathroom	shared
Toilet	shared
Toilet system	electric
Wash basin	in the bathroom
Shower	shared
Guest cabin 2	twin single
Wardrobe	hanging and shelves
Bathroom	en suite
Toilet	en suite
Toilet system	electric
Wash basin	in the bathroom
Shower	en suite
Washing machine/dryer combi	Bosch (situated in engine room)
Central vacuum cleaner	yes
Extra info	Airconditioning (Webasto) in all rooms / Lazarette on aft ship
Extra info	Bar on aft deck

MACHINERY

No of engines	1
Make	John Deere
Type	6068 - SFM
HP	400



kW	294.40
Fuel	diesel
Drive	shaft
Engine controls	electrical
Gearbox	hydraulic ZF with trolling function
Bowthruster	electric Proportional and with remote control Sidepower
Sternthruster	electric Proportional and with remote control Sidepower
Bilge alarm	yes
Electrical installation	12/24 V. DC and 230 Volt AC
Generator	Whisper Power M-SQ6
Batteries	Approx. 8x 12V / 260 Amp
Battery charger	Whisper Power
Inverter	2x Whisper Power WPC 5000W / 24V
Shorepower	with cable
Insulation transformer	Victron
Stabilizers	Rotor Swing
Extra info	Spud pole front and aft for easy anchoring at shallow waters

NAVIGATION

Multi control display	Simrad
Depth sounder	yes
Depth sounder/log	yes
Log	yes
Windset	yes
VHF	2x Sailor 6215 VHF DSC
VHF handheld	yes
Autopilot	Simrad
Rudder angle indicator	yes
Radar	Simrad
GPS	yes
Plotter	Simrad



Wifi antenna	yes
AIS transceiver	yes
Camera	In mast
Navigation lights	yes
Loudhailer	yes

EQUIPMENT

Cockpit cover	yes
Cockpit table	yes
Cockpit chairs	yes
Bathing platform	yes
Boarding ladder	yes
Transom door	yes
Anchor	yes
Windlass	electrical
Sea railing	steel
Grab rail (superstructure)	steel
Railing side opening gates	yes
Lifebuoy	yes
Wiper	yes
Horn	yes
Fenders	yes
Mooring lines	yes
Spare parts	yes
Tools	yes
TV	2x
Fire extinguisher	yes
Extinguisher in engine room	yes

RIGGING

Material mast	wood
---------------	------



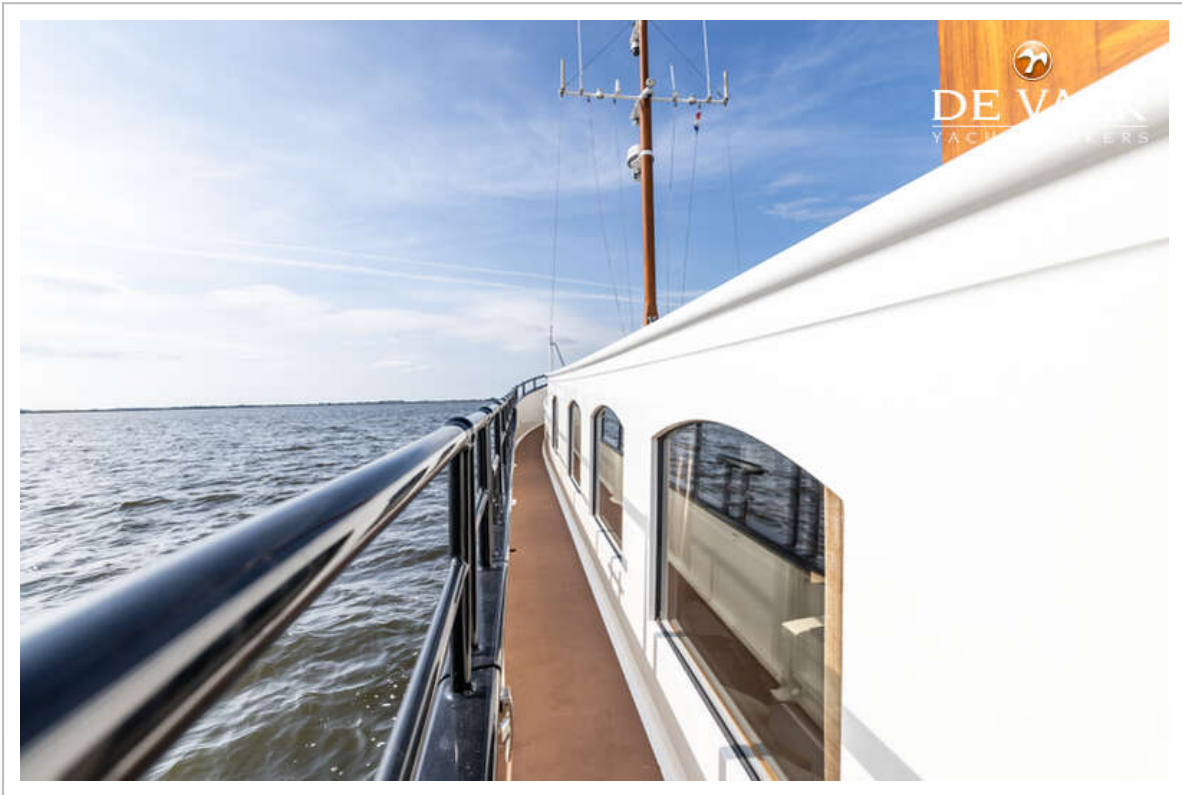
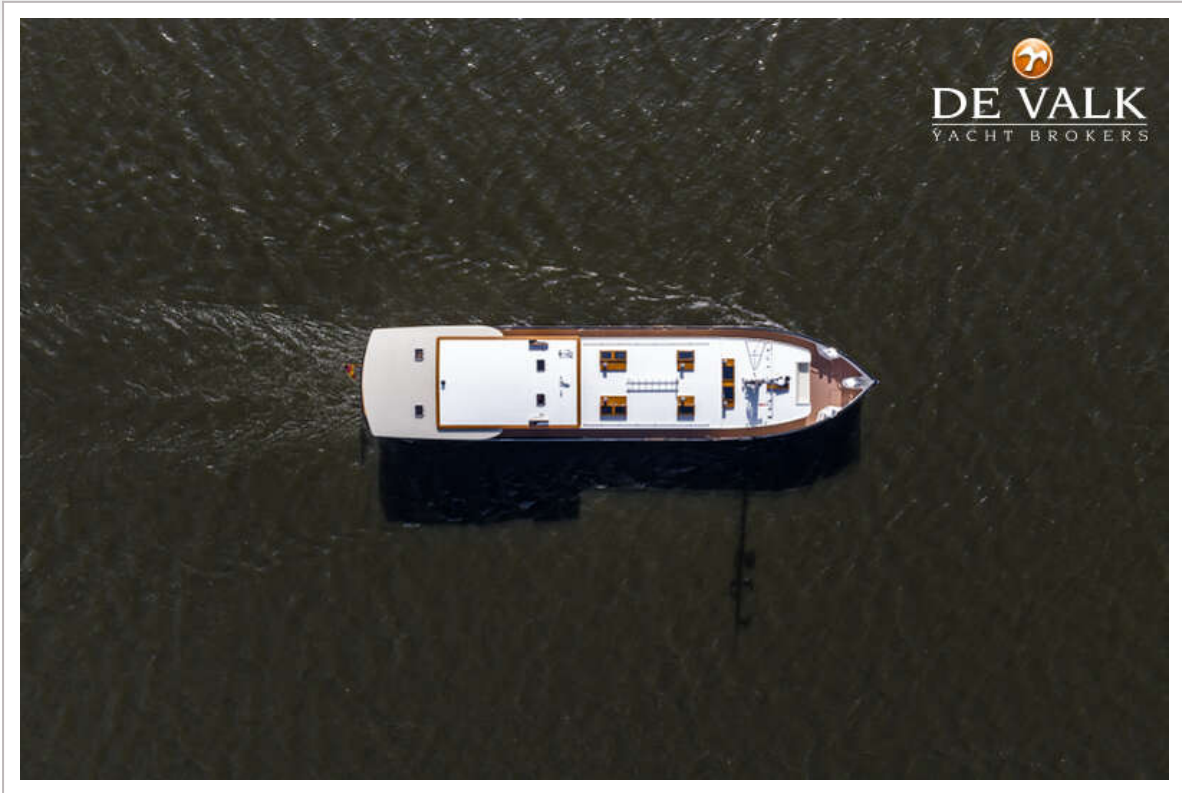
Mast lowering system

yes





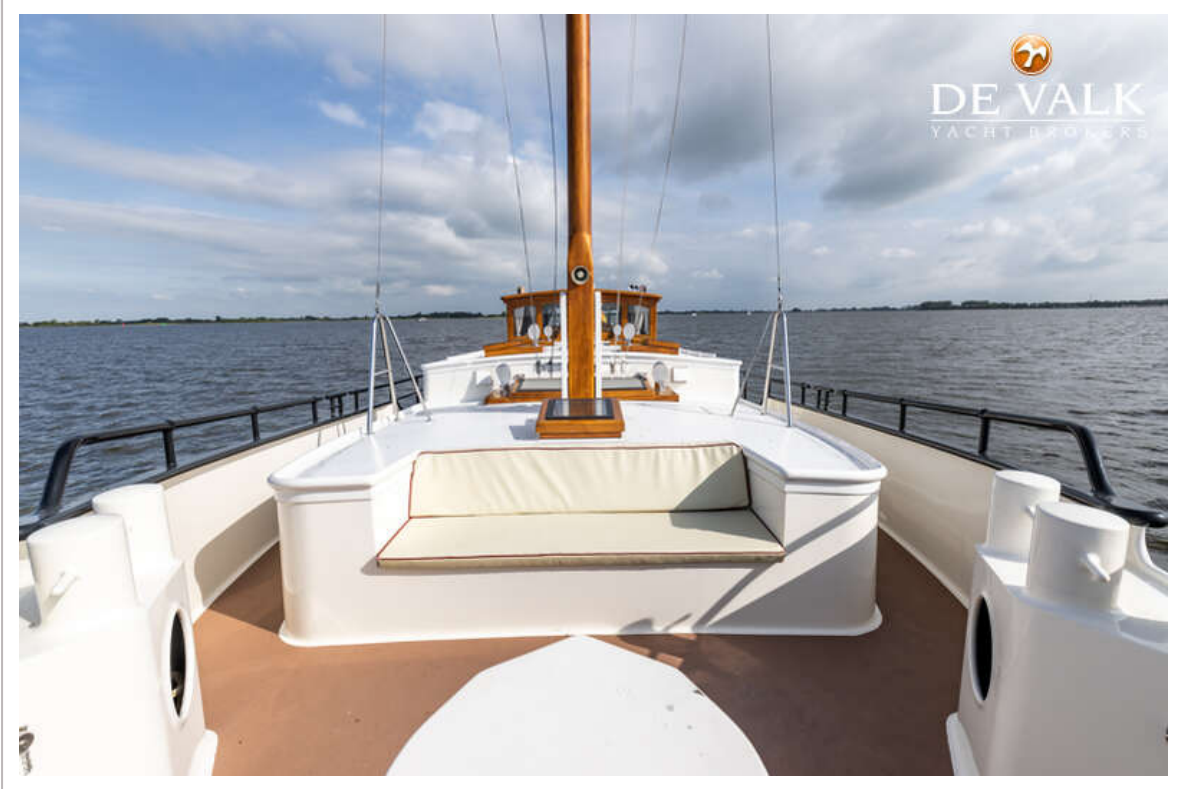




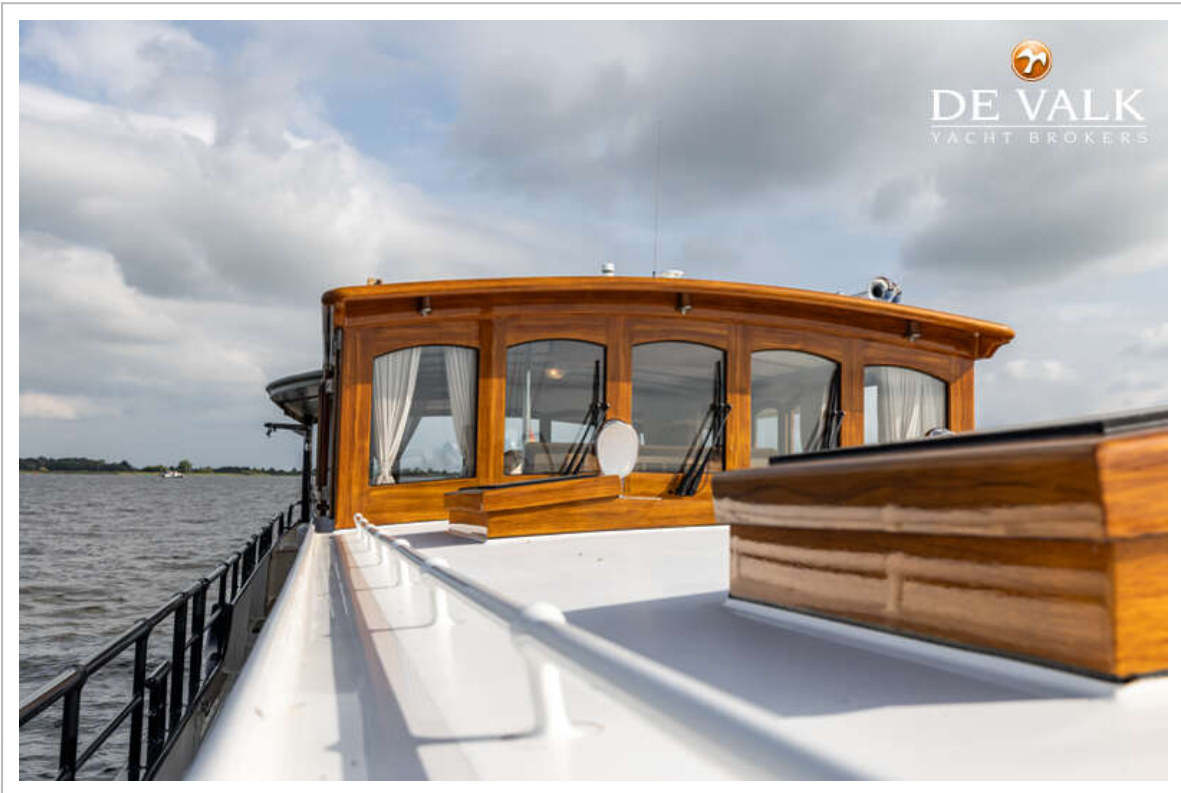
ALM LUXE MOTOR



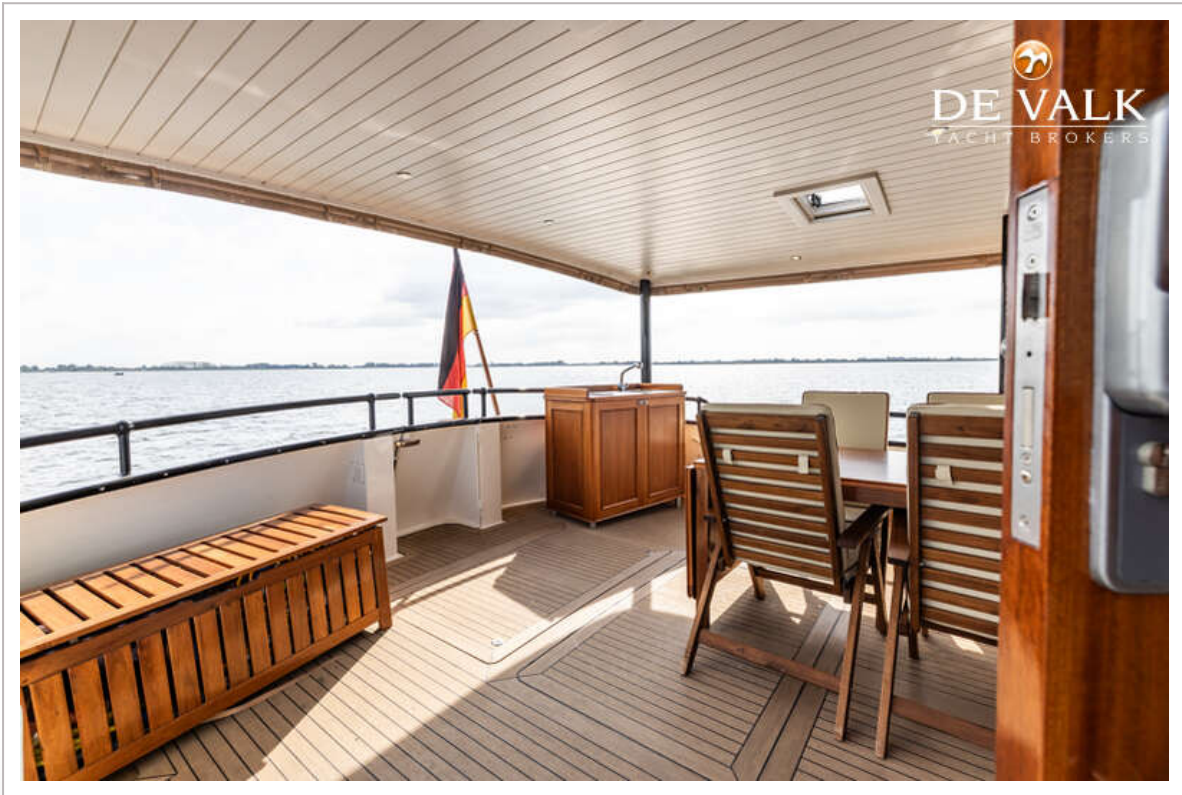
ALM LUXE MOTOR



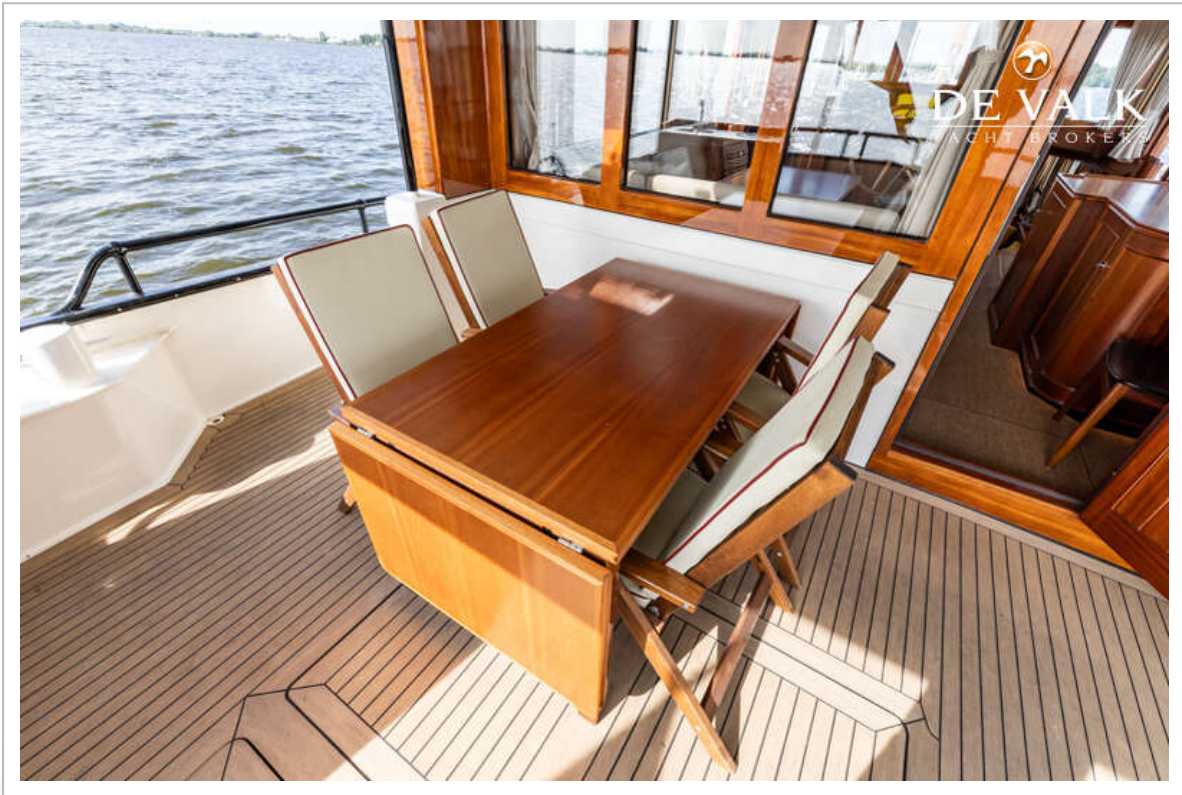
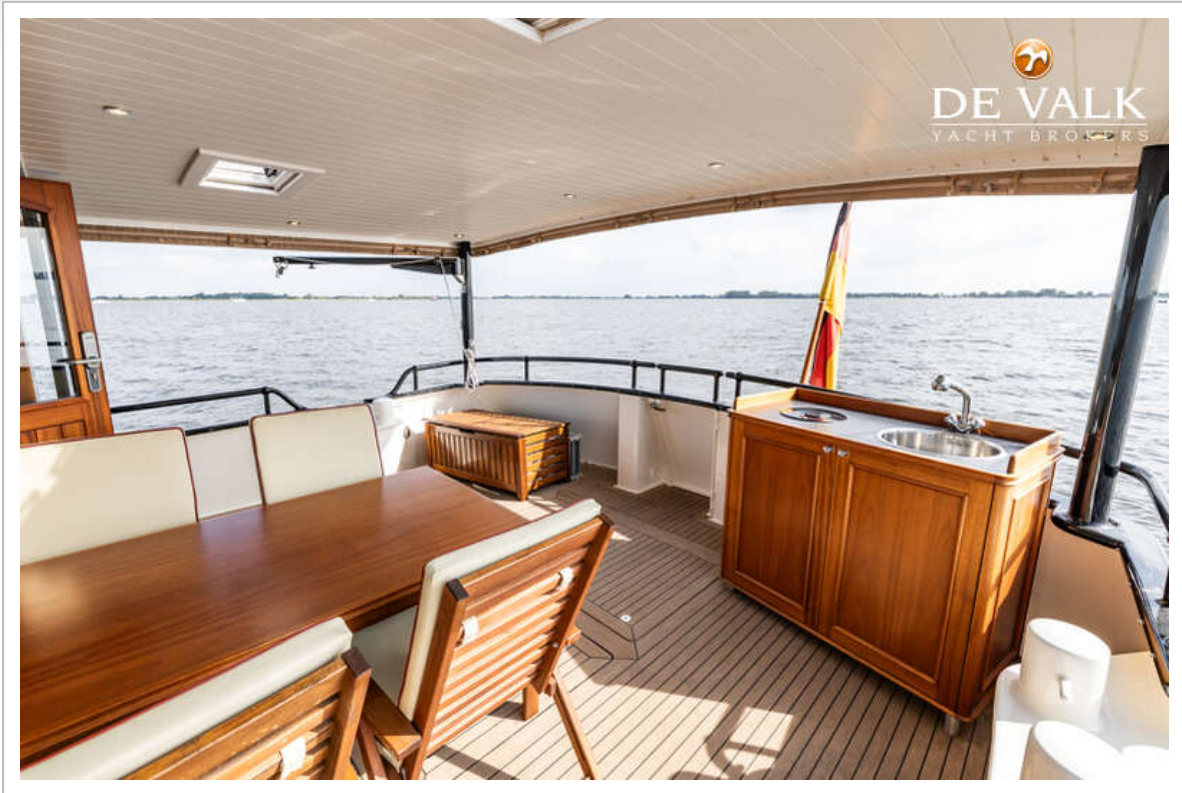
ALM LUXE MOTOR



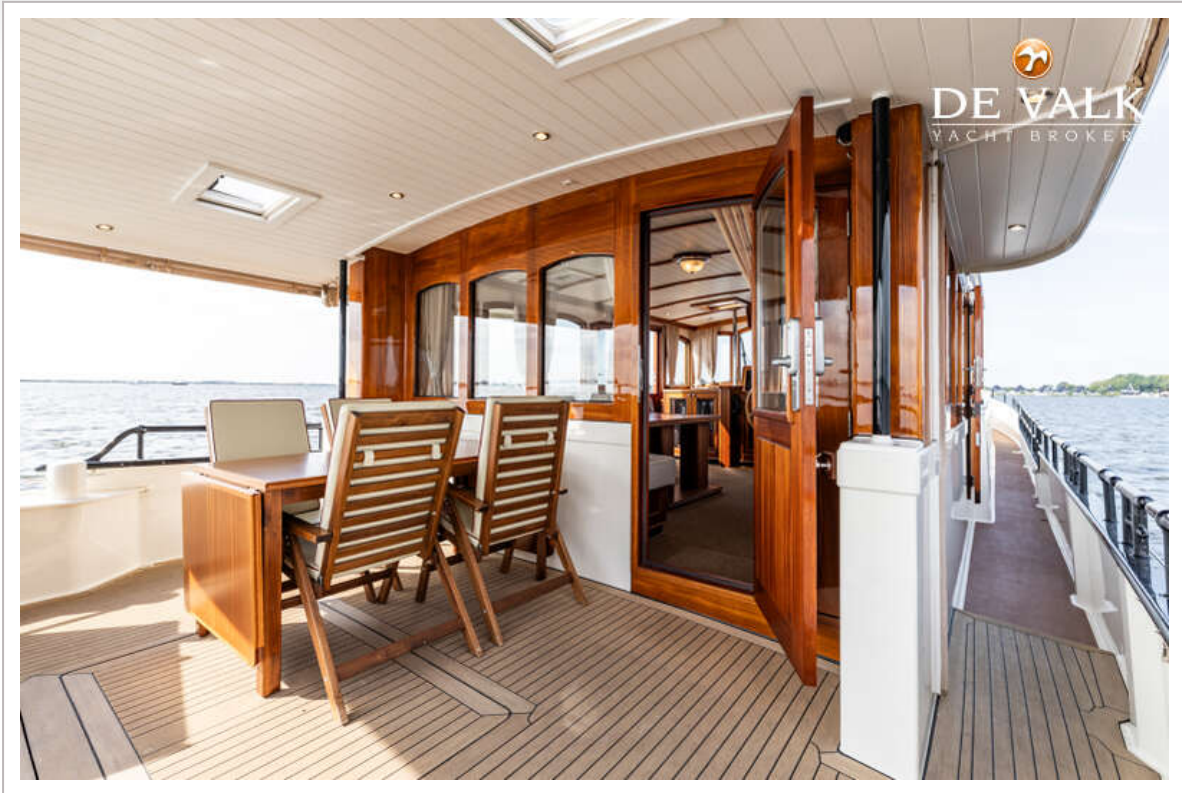
ALM LUXE MOTOR



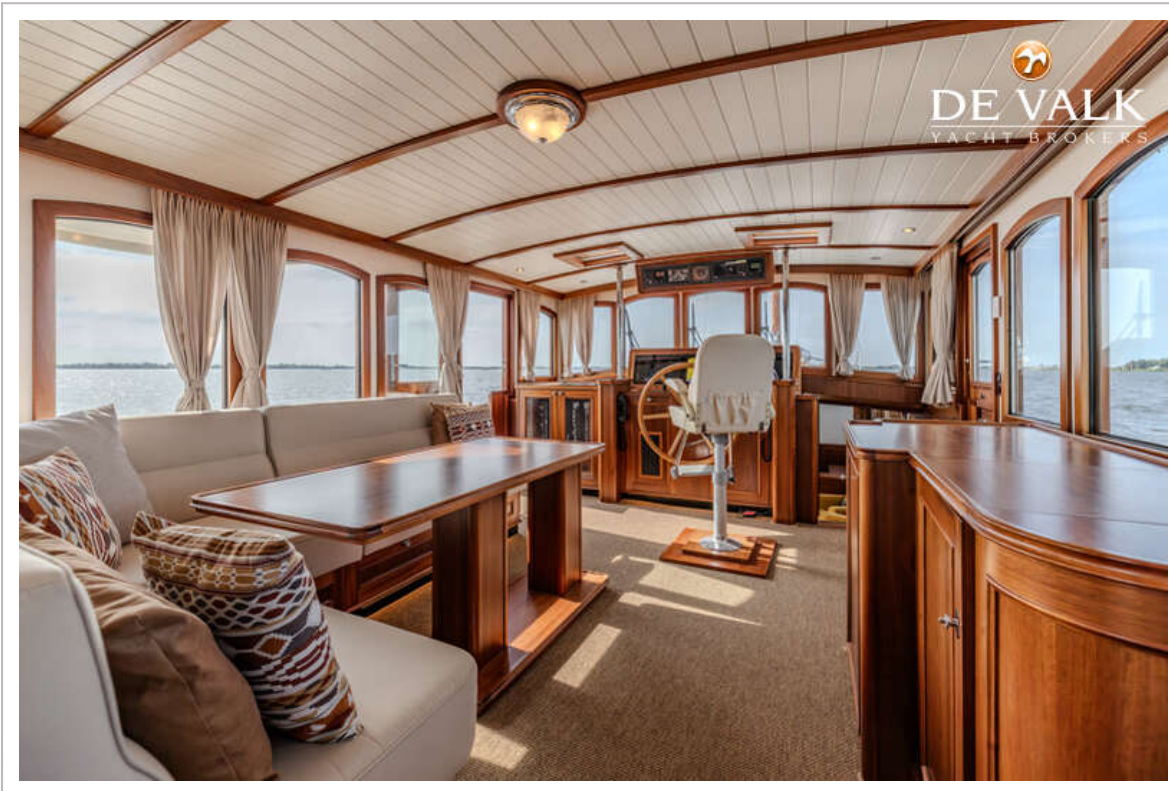
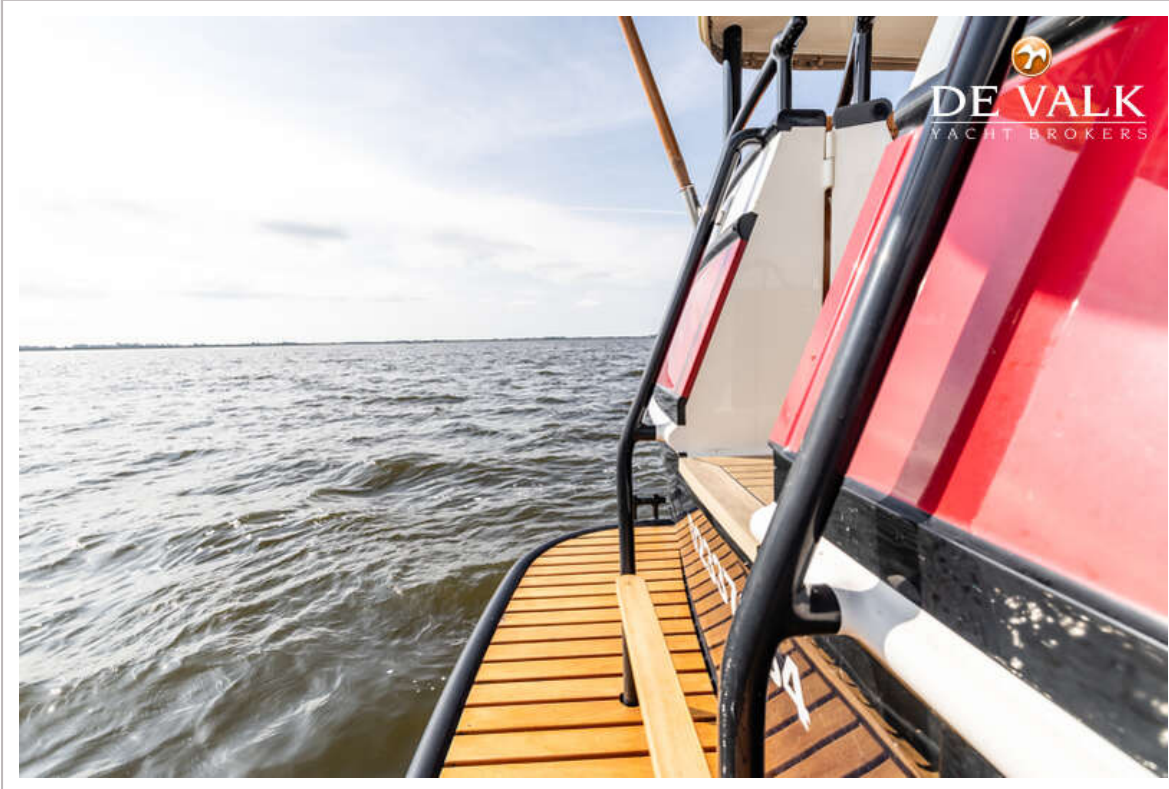
ALM LUXE MOTOR



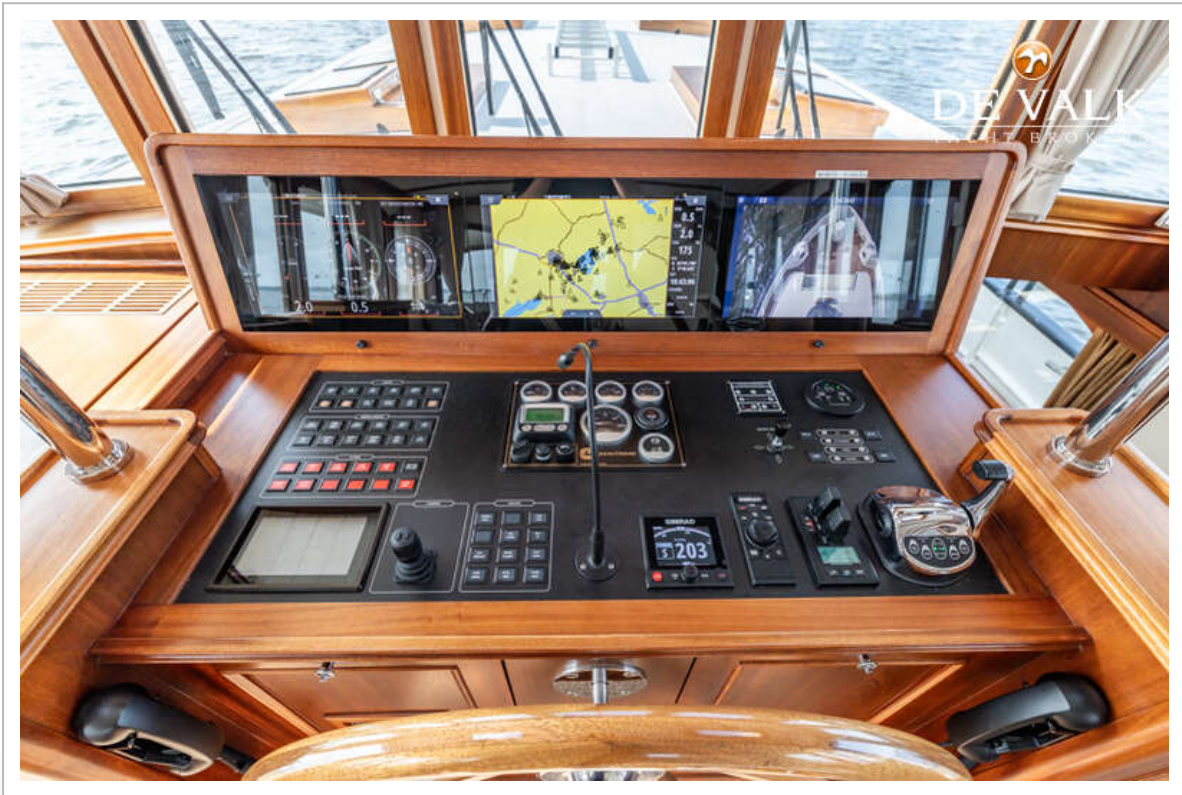
ALM LUXE MOTOR



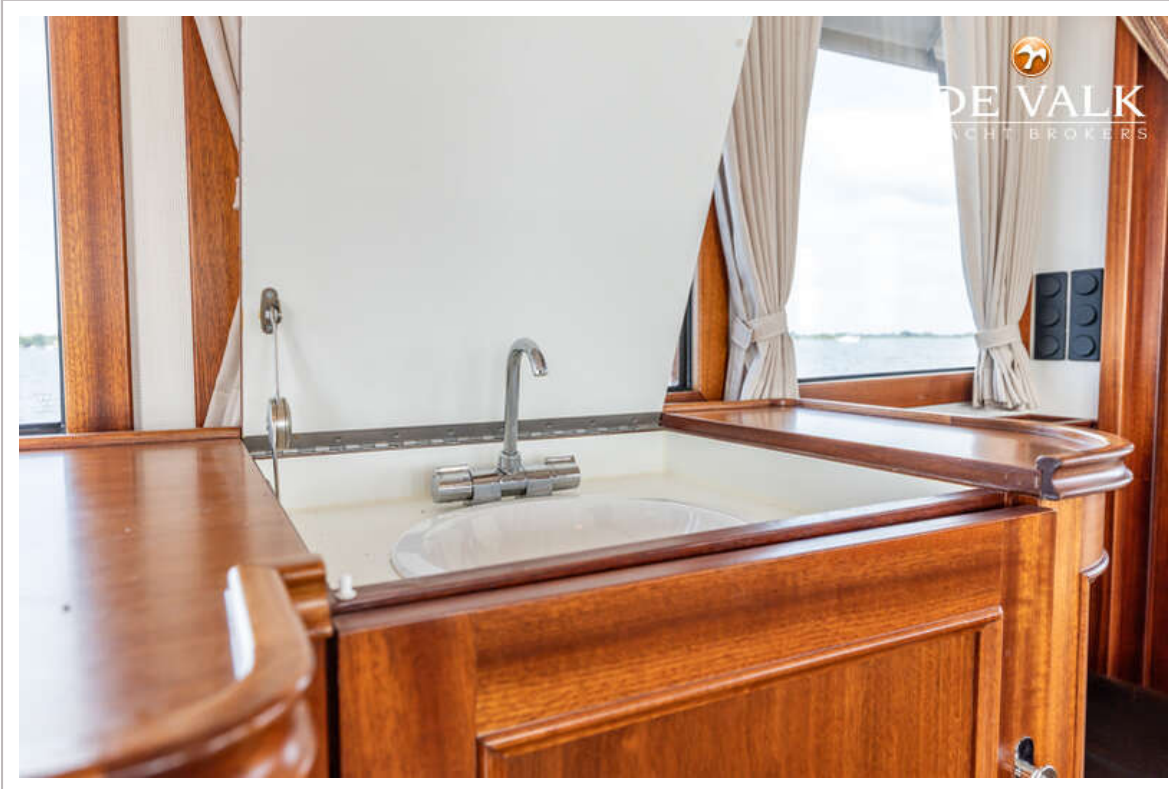
ALM LUXE MOTOR



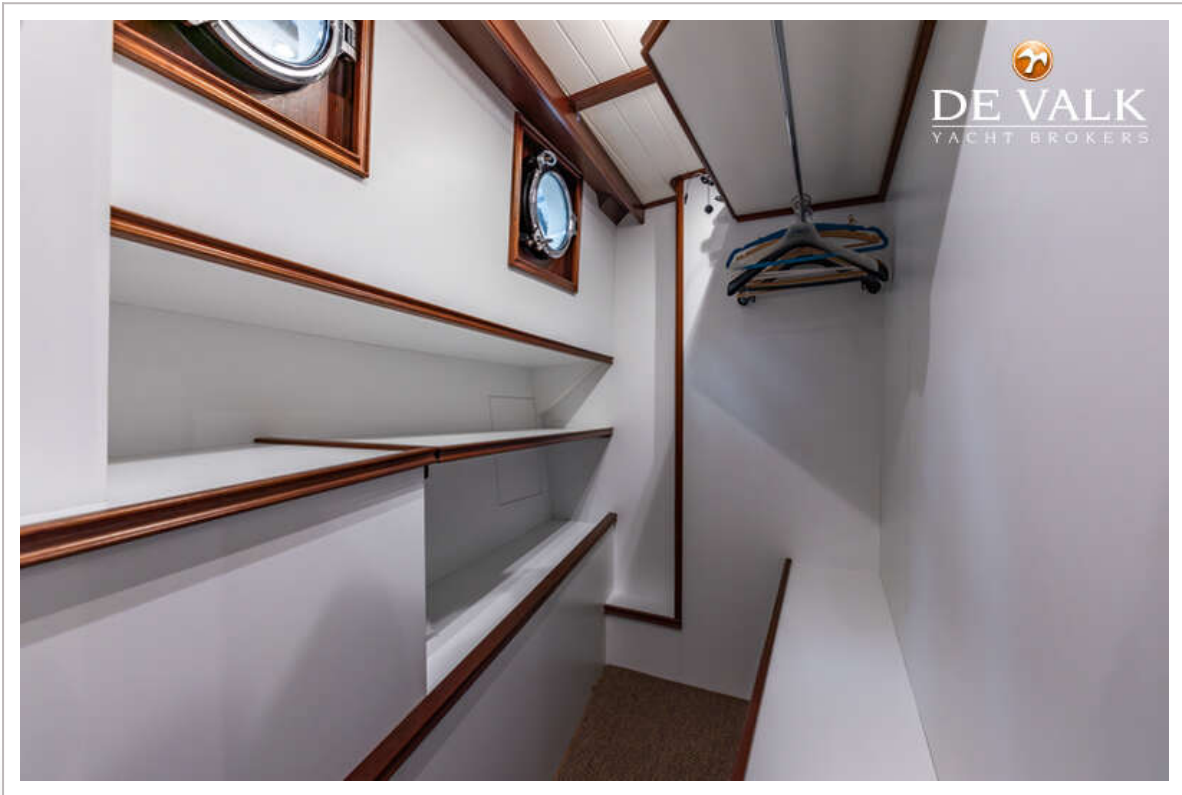
ALM LUXE MOTOR



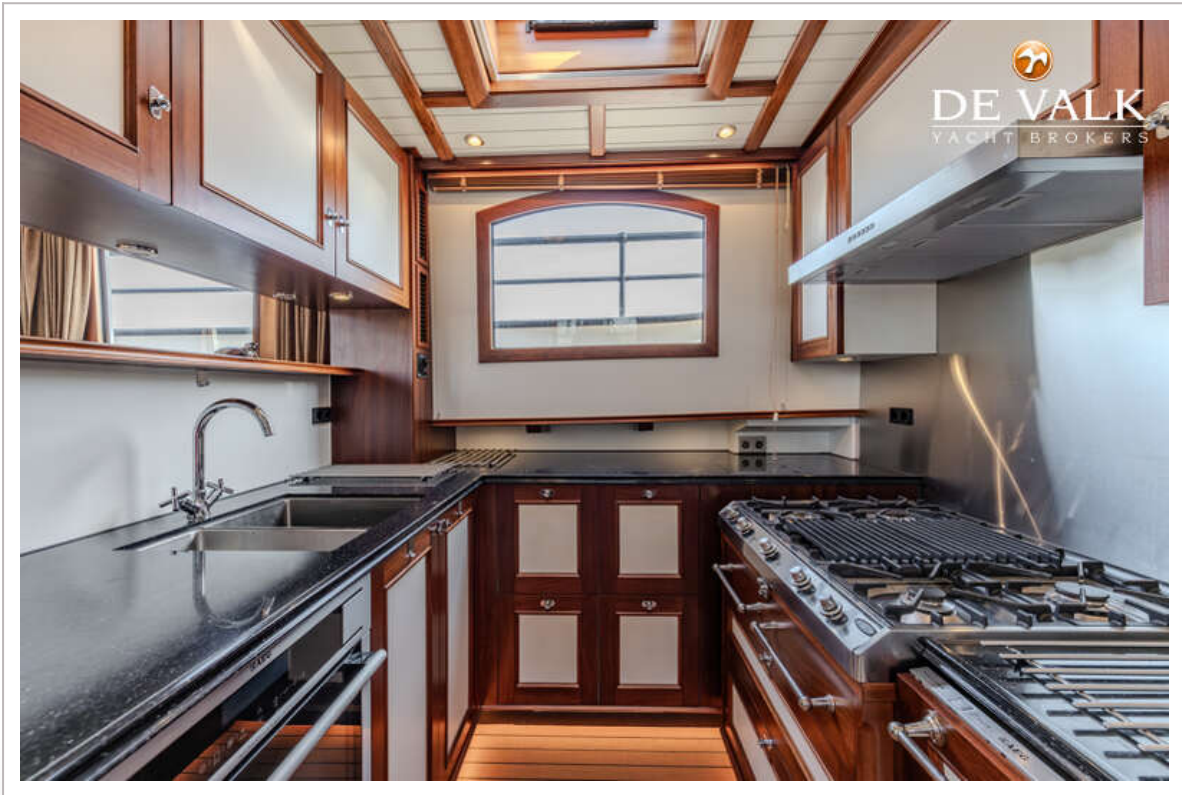
ALM LUXE MOTOR



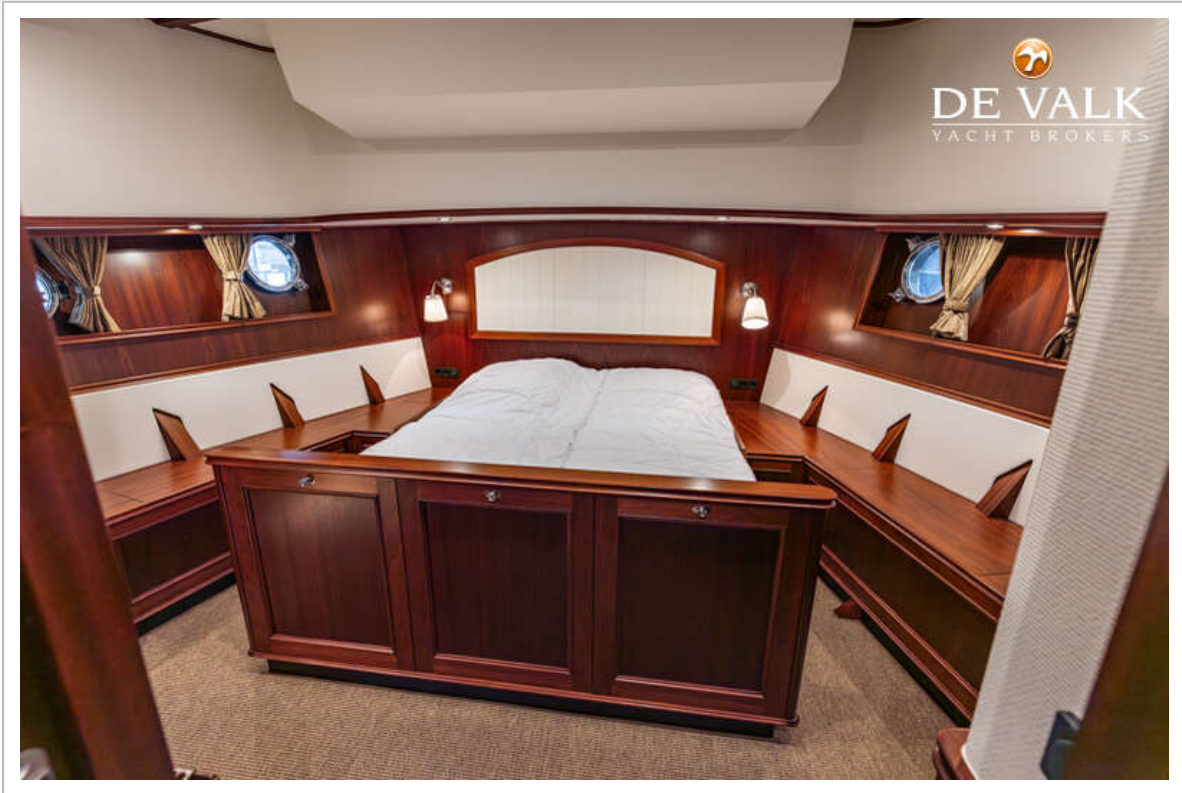
ALM LUXE MOTOR



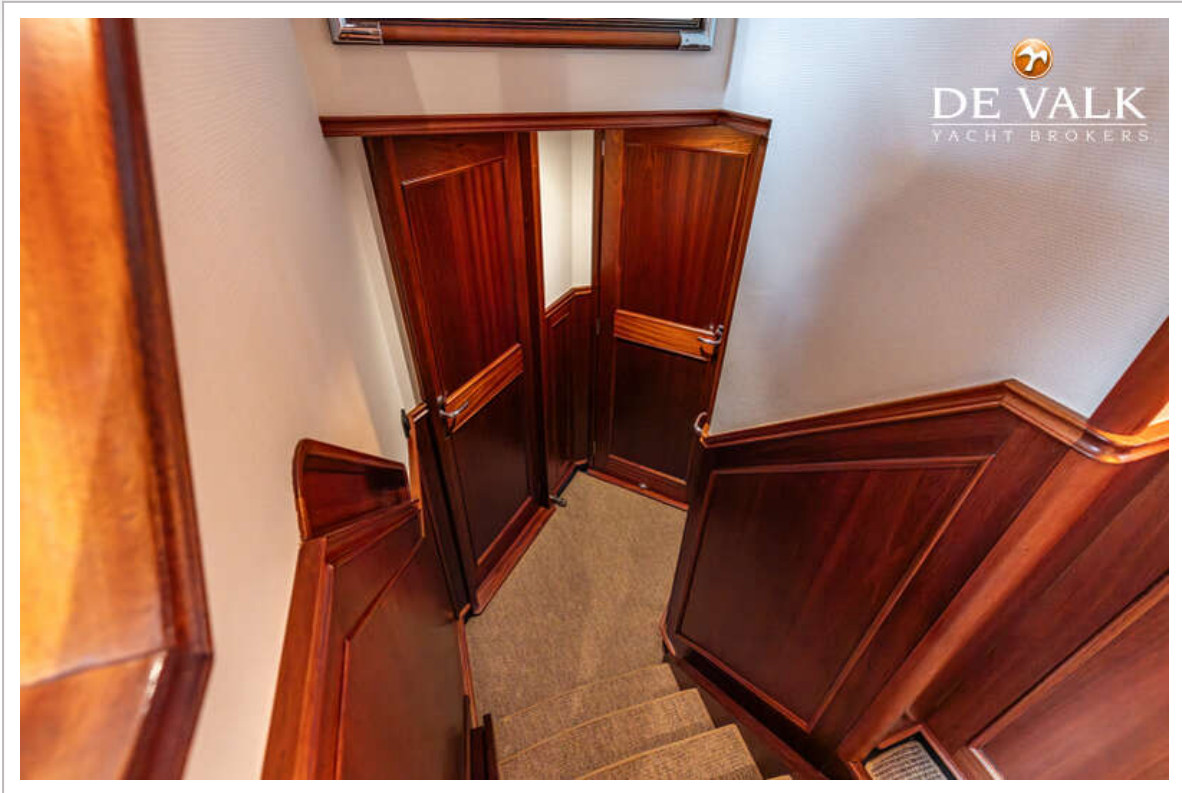
ALM LUXE MOTOR



ALM LUXE MOTOR



ALM LUXE MOTOR



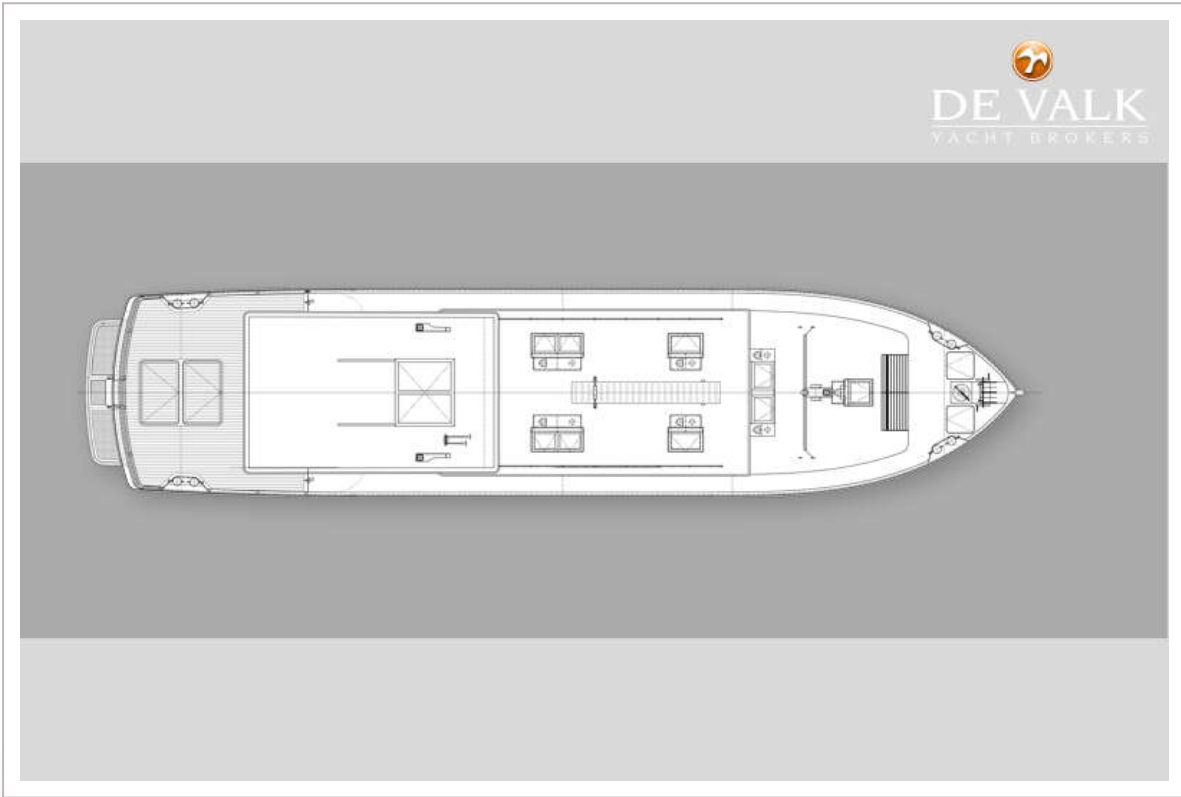
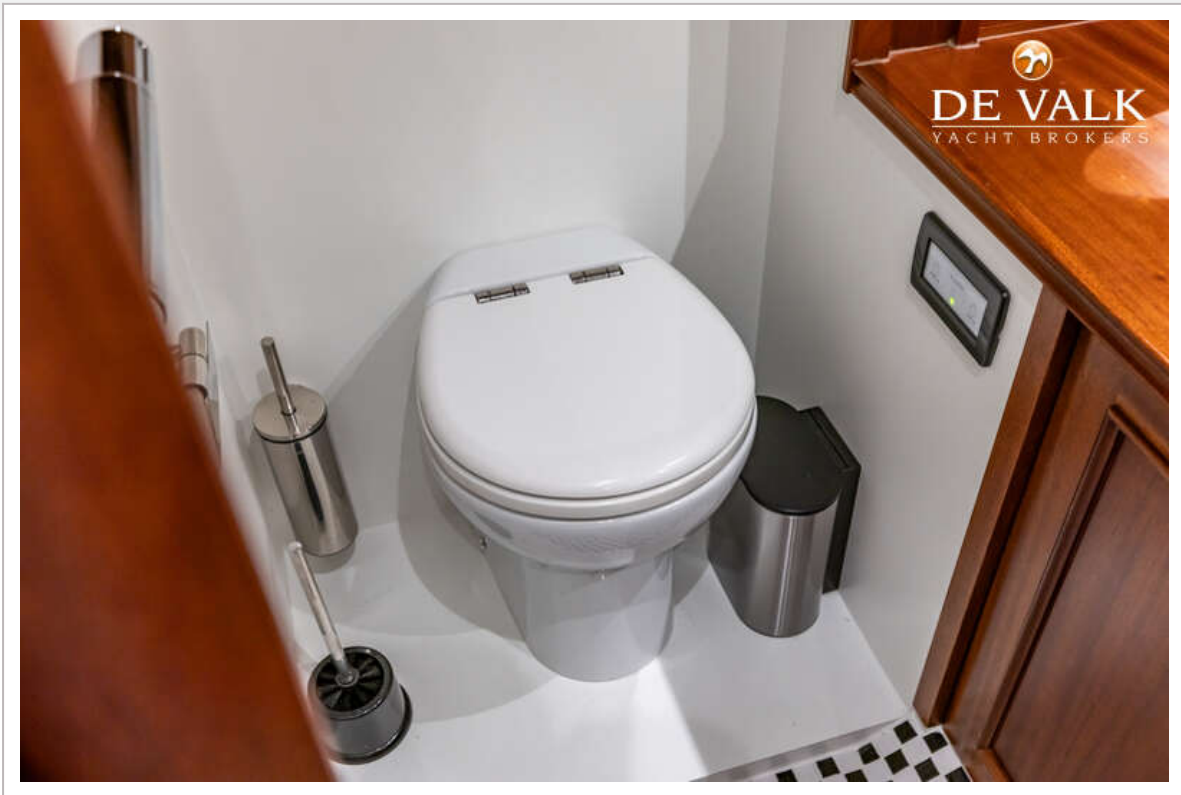
ALM LUXE MOTOR



ALM LUXE MOTOR



ALM LUXE MOTOR



ALM LUXE MOTOR

